

Focus on Faculty

Don't forget the fall general faculty meeting is today, Oct. 25, from 3:30 to 5 p.m. in Memorial Union's Wrench Auditorium.

Mizzou Budget 101

MU works to plug a hole in its general operating budget.

Page 2

Oct. 25, 2007

University of Missouri-Columbia

Home for Homecoming



Rob Hill photo

PREGAME PHILANTHROPY MU students Julie Miller, Jessica Alexander, Abigail Scheer and Trevor Turner team up to install fire stops last week in the wall of the MU Homecoming Habitat for Humanity house constructed in front of the St. Thomas More Newman Center.

STUDENT SERVICE

Philanthropy projects are a Homecoming tradition

Responding to human needs is at the heart of Homecoming at Ol' Mizzou. Although students

have a long-standing tradition of community service year round, the annual event brings old and new students together to boost campus spirit, and build friendships and community.

For example, hundreds of students, along with some faculty

and staff members, suffered cuts, bruises and stings working with the MU chapter of Habitat for Humanity to construct a house for a local family. The build took place Oct. 8 through 19 in the heart of campus on the front lawn of the Newman

Center. Other organizations involved were University 'Y' and the Show-Me Chapter of Habitat for Humanity.

The volunteers finished the house in time for display Friday night during Campus Decorations. The frame soon will be moved to its permanent location in the community.

"I like seeing all the people getting excited and coming out to better the community," says chapter president Allie Thebeau, of Lone Tree, Colo., a junior majoring in animal sciences. "Last year we had mostly Greek organizations involved, but this year we had many more organizations and students wanting to help."

To increase participation from campus departments, schools, colleges and divisions, Thebeau says the chapter started a new tradition this year called the Golden Hammer Award, given to the campus unit or student organization that brings the most volunteers to build. The winner keeps the hammer — and bragging rights — until both are up for grabs the next year.

At another Homecoming-sponsored event, students, faculty and staff rolled up their sleeves and gave from their hearts. MU holds the world's largest blood drive on any campus worldwide. During the three-day drive this year, the campus community

donated nearly 4,200 units. Each unit potentially saves three lives.

On Sept. 30, students campuswide hit the streets dropping off grocery bags at Columbia homes for the Tigers Taming Hunger campaign. A week later, they returned to collect filled bags.

Julie McLiney Crowe, a member of the Homecoming service committee, says the campaign is still receiving monetary donations and to date, they have received 8,343 pounds of food and \$1,819 in donations to support the Central Missouri Food Bank. With each dollar, the bank can purchase 20 pounds of food. "If everything continues as planned, we should exceed 50,000 pounds of food that will be used to provide more than 33,000 meals for Columbia families," says Crowe of Kansas City, a sophomore in health professions.

"While, Mizzou Homecoming is about tradition as our theme 'Paws for Tradition' suggests, service is one of its greatest aspects," Crowe says. "We give back to the community through our service events, the people throughout Missouri with our blood drive and our alumni by providing entertainment at Campus Decorations and the parade."

University's benefit enrollment change period deadline is Nov. 9

FOR YOUR BENEFIT

Plan administrator will change; medical premiums will stay the same

It has almost become a part of the cycle of seasons at the University of Missouri: When fall arrives, the annual benefit enrollment change period is not far behind. Faculty and staff will receive information packets in their office mailboxes this week.

In a first step toward an electronic environment, the enrollment change information will be sent to faculty and staff in an electronic, CD format instead of a printed booklet. The electronic version will provide significant cost savings over the

printed booklet, says Suzanne Hart, manager of Faculty and Staff Benefits. "But it's also a fact that our medical plan administrators have also moved to the online environment for provider search and other medical information. Ultimately, the University is going to move to online enrollment."

The enrollment change period is also a time when faculty and staff can review and make changes to the University's life and disability insurance programs they participate in. It's also the time for employees to re-enroll in the tax-saving flexible spending accounts that cover dependent care and unreimbursed medical expenses.

Faculty and staff have until Nov. 9 to make those changes or to enroll in flexible spending accounts for next year. The changes will take effect Jan. 1, 2008. Faculty and Staff Benefits has scheduled a series of employee meetings to explain the benefits plan and to answer any questions. (Please see meetings schedule on Page 4.)

There will be another change in the medical insurance plan for 2008. The University will be changing plan administrators from United Health Care to Coventry Health Care based in Bethesda, Md. University officials say the change was made because services provided by longtime plan administrator

United Health Care had deteriorated significantly over the past few years.

In the competitive bidding process, the University set high performance standards for Coventry and will monitor the company's performance, in part through periodic surveys with faculty and staff.

The change in administrators will mean little change for employees enrolled in the plan, Hart says. She explains that the University has a self-insured medical plan, which means that the plan administrator does not determine plan design. The administrator provides customer service and claims payment

based on what the University of Missouri has determined may be covered under the plan.

Other than a few minor, administrative differences, "what is covered and what is paid for under the plan is not changing," Hart says.

The list of medical providers participating in the University's plan is almost identical, as well. "We will have a 98.2 percent match of providers," Hart says. There will be no changes to the plan design of the dental and prescription drug plans.

Employees should be pleased with another aspect of the medical plan that is not changing. There will be no

SEE Benefits on Page 4

Walk to Wellness

Workplace wellness programs pay off for both employers and employees. The University will introduce its new wellness program for faculty and staff — Healthy for Life: The T.E. Atkins University of Missouri Wellness Program — at a health fair next week on the Mizzou campus.

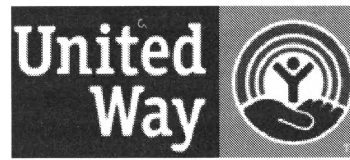
“Providing a wellness program lowers health care costs, reduces absenteeism, improves morale and is just the right thing to do for our faculty and staff,” says Laura Schopp, the wellness program’s director and an associate professor of health psychology.

The “Walk to Wellness”

event takes place from 8 a.m. to 3 p.m., Monday, Oct. 29 in the ballroom at the Reynolds Alumni Center and is open to MU faculty and staff and University of Missouri System personnel who work in Columbia. Curator Emeritus Tom Atkins and Gordon Lamb, interim UM president, will welcome participants at 8:30 a.m.

The event includes free health screenings for benefit-eligible employees. These screenings include: blood pressure, fasting glucose, cholesterol, and skin cancer. Height and weight of participants also

will be recorded. Employees will have the opportunity to enroll in tobacco cessation programs, stress reduction workshops, weight management classes and low-cost exercise programs.



United Way is halfway

The University’s 2007 United Way campaign came roaring out of the gate this month. During the campaign’s third week faculty, staff and retirees

donated a total of \$284,519, which is just shy of the halfway mark. The University’s 2007 goal is \$575,000.

But the campaign is still lagging behind on another United Way goal: the rate of participation by University employees. So far, slightly more than 10 percent — one in 10 — employees and retirees have donated to the campaign. One goal for 2007 is to increase the number of University donors to the campaign, and there’s still plenty of time to do that.

Wealth of workshops

For the third year, MU Human Resource Services is making it easy for employees to take part in free workshops on such topics as supervision, management, leadership, conflict management, office skills, career advancement and personal development. The 2007 Training Conference will be held Nov. 6 and 7 in Memorial Union. Registration information and a complete schedule of workshops is available online at iatsbase.missouri.edu/hrtraining.

Faculty forums tackle Mizzou’s ‘daunting’ budget challenges

OPERATING OPTIONS

MU works to plug a hole in its budget

At the first of two forums to discuss budget challenges facing MU, Provost Brian Foster told the dozens of faculty attending the Oct. 22 meeting that any question from them would be fair game. He also added a word of caution. “I’ll give you a little forewarning,” Foster said, “This isn’t going to be all good news.”

Using current planning assumptions, budget analysts are projecting a deficit of \$7 million for fiscal year 2009. And that could be a best-case scenario, Foster warned. If current assumptions prove too optimistic, the deficit could rise to \$11 million next year.

As MU looks ahead to the 2008-2009 fiscal year, which begins next July 1, budget planners face the same challenge they face every year: balancing the budget. “We have to balance our budget,” Foster said. “That’s not an option.”

To do that, planners must look at a number of factors, many of

which are only estimates at this point. Those elements include anticipated state appropriations; the rate of inflation, which caps the amount of tuition increases Missouri allows state colleges to charge; student enrollments; salary increases; and utility and benefit costs, to name just a few.

Planning assumptions for the 2009 fiscal year include a 4 percent increase in state appropriations, a 3.2 percent inflation rate which will allow tuition increases at the same rate, a 4 percent pool for employee salary increases and an additional \$2 million for the first year in a three-year initiative to raise faculty salaries.

“There really are two problems,” Foster said. “The first is that the level of the state appropriation for all of higher education is very, very low compared with other states.” The second problem, he said, is that the state doesn’t give appropriate weight to MU’s educational mission in the state. For example, as Missouri’s flagship university, Mizzou provides a significantly larger proportion of graduate and professional education

than other public universities in the state. Those programs are much more expensive to deliver than most undergraduate programs. “So, we’re getting hit both ways,” Foster said.

In a presentation that MU’s budget office has dubbed “Mizzou Budget 101,” Pat Morton, a longtime campus budget analyst, demonstrated that more than half of Mizzou’s total revenues of \$1.1 billion for the current fiscal year already are committed to ongoing programs or are generated by self-supporting auxiliary units, such as University Physicians, University Bookstore, KOMU-TV and others.

The remainder — \$445 million — makes up MU’s general operating budget, called the “GO budget,” which funds academic programs, libraries, employee salaries and benefits, utilities and building maintenance costs, and other expenses. The GO budget comes primarily from three sources, Morton said: \$234 million, or 52.5 percent of this year’s GO budget comes from student tuition; \$181.7

million, or 40.8 percent, comes from state appropriations; and \$29.8 million, or 6.7 percent, comes from “facilities and administration” funds, which are overhead costs paid to MU by federal granting agencies.

“The big question, then, is what are we going to do to plug this hole in the budget?” Foster asked. One solution, although an extremely unwelcome one, would be to leave faculty positions unfilled, he said.

Wouldn’t that mean fewer faculty to teach the additional students MU hopes to attract, one faculty member asked. “Business as usual is clearly not going to be an option,” Foster said. “We’re going to have to be creative and see that this situation doesn’t negatively impact the education we provide.” For instance, departments could look at increasing the size of certain class sections, cross-listing courses with other departments or offering small classes less frequently.

Another professor asked why MU doesn’t take some of the money that auxiliary enterprises

generate and use it for other priorities. In the past, the central campus administration has tapped the reserves of some auxiliaries for one-time expenditures, Morton said, but cautioned that raiding those units’ resources could weaken them so much they no longer would be self-supporting.

One faculty member asked if another early retirement program would be a way to raise GO budget dollars. Foster said that option has been looked at, but reminded everyone that the University has tried that approach at least twice in the past decade. The pool of eligible faculty is small, and they already have turned down that option several times.

In fact, MU already has tried most available cost-cutting options. “There are no simple answers to any of this. We’ve cut not just to the bone, but into the bone. There’s not a lot left to cut,” Foster said. “No decisions are going to be made here that don’t have excruciating tradeoffs.”

One faculty member asked what MU is doing to get its message out around Missouri

SEE Budget on Page 4

Have a SPOOKTACULAR Halloween!

Staff Council’s fall newsletter coming your way!



Staff Advisory Council
University of Missouri-Columbia
27 Jesse Hall - 882-4269

Mark your calendars!
Staff Recognition Week 2008
May 19-23

Congratulations to our
September Service Champion!

Tammy Limbach, University Registrar

MizzouWeekly

Volume 29 No. 10

A publication for the faculty and staff of the University of Missouri-Columbia, published every Thursday during the academic year and twice a month during the summer by Publications and Alumni Communication, a department of University Affairs, 407 Reynolds Alumni Center, 882-7357. News deadline is noon Thursday the week before publication. Annual subscriptions are available for \$30.

Editor John Beahler

Advertising Lauren Gosling,
Scott Reeter

Photographers Benjamin Reed,
Nicholas Benner, Rob Hill

Writer/designer Sue Richardson

calendar



Concerts & Plays

Sunday, October 28

UNIVERSITY CONCERT SERIES: "Video Games Live," an orchestral performance that uses video, special effects and light sequences to showcase 50 different video games, will be presented at 7 p.m. in Jesse Auditorium. For ticket information, call 882-3781.

Monday, October 29

FACULTY RECITAL: Janice Wenger and Friends will perform chamber works on MU's recently acquired fortepiano at 8 p.m. in Whitmore Recital Hall. A \$5 donation is suggested; free for students.

Thursday, November 1

UNIVERSITY CONCERT SERIES: The classic Broadway musical *Gypsy*, with lyrics by Stephen Sondheim, will be presented at 7 p.m. in Jesse Auditorium. For ticket information, call 882-3781.

Courses & Workshops

Wednesday, October 31

UNIVERSITY RETIREMENT SEMINARS:

- Jennifer Quade, retirement analyst in Faculty and Staff Benefits, will explain and discuss the University of Missouri Retirement, Disability and Death Benefit Plan from 8:30-9:30 a.m.
 - Larae Kostal, coordinator of the University's tax-deferred annuity program, will explain that program and its features at a seminar for faculty and staff from 9:30-10:30 a.m.
- Both seminars will be held in Suite 210, Building 7 of the Woodrail Center, 1000 W. Nifong Blvd. Registration is required online at www.umsystem.edu/ums/departments/hr/benefits/seminars.

Exhibits

MUSEUM OF ART & ARCHAEOLOGY:

"Fifty Golden Years: Highlights from the Permanent Collection" celebrates the museum's 50th anniversary with an exhibit that represents a cross-

section of the museum's major collections through Dec. 23. The museum, located in Pickard Hall, is open from 9 a.m.-4 p.m. Tuesday-Friday and noon-4 p.m. Saturday and Sunday.

BINGHAM GALLERY:

"Represent," a group exhibit by current master of fine arts candidates, will be on display through Nov. 15. An opening reception will be held from 4-8 p.m. Oct. 26.

STATE HISTORICAL SOCIETY:

"Picturing Native Americans in the 19th Century: Lithographs from McKenney and Hall's *History of the Indian Tribes of North America*" features hand-colored lithographs of 19th century Native-American leaders in the society's main gallery through March 15.

Lectures & Seminars

Friday, October 26

BIOCHEMISTRY SEMINAR: John Turchi from the Indiana University School of Medicine, will present "Repair of Chemotherapy-Induced DNA Damage: Opportunities For Modulating Drug Resistance and Sensitivity" at 1 p.m. in the Life Sciences Center's Monsanto Auditorium.

Saturday, October 27

SATURDAY MORNING SCIENCE: Dave Schulz, assistant professor of biological sciences, will present "Reverse

Engineering the Brain with Computers" from 10:30-11:30 a.m. in the Life Sciences Center's Monsanto Auditorium.

Sunday, October 28

INDIA WEEK LECTURE:

Science writer and MIT faculty member Robert Kanigel, author of *Ramanujan: The Man Who Knew Infinity*, will discuss his work at 1 p.m. in Memorial Union's Wrench Auditorium.

Monday, October 29

EUROPEAN UNION SEMINAR:

Vladislav Glinkii, assistant professor of pathology and European Union Center fellow, will present "Cooperative Cancer Research" at 4 p.m. in 305 Middlebush Hall.

Tuesday, October 30

HUMAN ENVIRONMENTAL SCIENCES LECTURES:

Liz Sweney, executive vice president of JCPenney, will present "How to Create Private and Exclusive Brands" at 9:30 a.m. and "Things You Always Wanted to Know About the Corporate World" at 11 a.m. in the Reynolds Alumni Center's Great Room.

BIOSENSING SEMINAR:

Mark Haidekker from the University of Georgia will present "Progress in laser-Optical Imaging of Sheet-Based Tissue-Engineered Products" at 4 p.m. in 105 Agricultural Engineering Building.

Wednesday, October 31

BIOLOGICAL SCIENCES SEMINAR:

Graduate student Tracy Rittenhouse will present "Costs of Migration for Wood Frogs in Missouri" at 4 p.m. in 106 Lefevre Hall.

Thursday, November 1

DIVERSITY INITIATIVE

SEMINAR: David Brunnsma, associate professor of sociology and black studies, will present "Teaching Race in Historically White Universities: Cracking the White Walls of Privilege" at 1 p.m. in N222/223 Memorial Union. This brown-bag seminar series is sponsored by the Chancellor's Diversity Initiative.

ARTS & HUMANITIES

SALON: Robert Baum, associate professor of religious studies, will present "African Woman Prophets: Diola Religion and Resistance in Colonial Senegal" at 5:30 p.m. at the Conley House.

WILDLIFE BIOLOGY

LECTURE: Rocky Gutierrez, professor of wildlife at the University of Minnesota, will present "Spotted Owls and Students of Conservation: The Underappreciated Cog in the Process of Understanding an Endangered Species" at 7 p.m. in the Life Sciences Center's Monsanto Auditorium.

Friday, November 2

ENGLISH LECTURE:

David Anthony, associate professor of English at Southern Illinois University-Carbondale, will present "Shylock on Wall Street; or, the Jessica Complex in Antebellum Sensationalism" at 4 p.m. in 104 Tate Hall.

BIOCHEMISTRY LECTURE:

Sandra Lemmon from the University of Miami School of Medicine will present "Dynamics of Clathrin-Mediated Endocytosis" at 1 p.m. in Monsanto Auditorium (Life Sciences Center).

Join us for an open house!



The University Center for Innovation and Entrepreneurship is a program of MU Extension Business Development and the MU College of Engineering.

Our efforts include:

- The Missouri Small Business and Technology Development Centers
- The Missouri Procurement Technical Assistance Centers, and
- SBIR/STTR and Technology Commercialization Assistance.

We work with faculty and student entrepreneurs, as well as other entrepreneurs in central Missouri to address management, marketing, research, finance and technology commercialization issues.

Come meet our staff and learn more about how we can help you achieve your entrepreneurship dreams.


9 a.m. to noon, Tuesday, Oct. 30

W1026 Lafferre Hall

MU College of Engineering

University Center for Innovation and Entrepreneurship partners:





Parking & Transportation Services

Turner Avenue Garage
Level 2
882-4568

Departments may purchase temporary permits for special events or to keep on hand for the use of their guests. The permits are \$2.50 per day or \$6 per week and are available for various lots/garages throughout campus. All permit orders should be made two weeks prior to event. Permits may be ordered through our office by phone at 882-4568 or through our Internet address at parking.missouri.edu.

parking.missouri.edu

Meetings

Friday, October 25

GENERAL FACULTY

MEETING: The fall general faculty meeting, with presentations by Chancellor Brady Deaton and Frank Schmidt, chair of MU's Faculty Council, will be held from 3:30-5 p.m. in Memorial Union's Wrench Auditorium.

Special Events

Thursday, October 25

INDIA WEEK EVENT:

"Dancing with Diversity Open-Air Snack'n Dance Jamboree" will be held at 11 p.m. on Lowry Mall (Rain Site: Rec Center).

Saturday, October 27

HAUNTED MUSEUM TOUR:

This pre-Halloween event for families will be held from 6-8:30 p.m. in Pickard Hall.

INDIA NIGHT: An evening of music, dance and costumes highlighting Indian culture will be held at 7 p.m. in Jesse Auditorium.

Monday, October 29

TIGERS 4 TIGERS

FUNDRAISER: Eat at Noodles And Company, 406 S. Ninth St., through Oct. 30 and 25 percent of sales will go to Tigers for Tigers. More information is at tigers.missouri.edu.

classifieds

FOR RENT

Completely renovated 3 bedroom, 2 bath duplex, garage, w/d hookups, lake privileges, area south. \$695. After 5 p.m. call 573-445-5420.

FOR RENT

Ashley Ridge Condos at MU campus. Luxury 1 & 2 bedroom apartments for faculty, staff, graduate, professional students. Quiet, spacious, energy efficient, cable TV, w/d hookups, carpools. \$515-\$635. 573-445-1892 or www.denice.com <<http://www.denice.com>> .

The classified advertising section is open to faculty and staff members and retirees.

Home phone number required.

No campus numbers will be printed.

Rates: 30-word maximum \$9

Deadline: Noon Thursday of week before publication.

No refunds for cancelled ads.

Mizzou Weekly Classifieds: Make check payable to University of Missouri and send to Classifieds, Mizzou Weekly, 407 Reynolds Alumni Center, Columbia, Mo. 65211

HARRY S TRUMAN SCHOOL OF PUBLIC AFFAIRS

YOU ARE CORDIALLY INVITED TO ATTEND THE

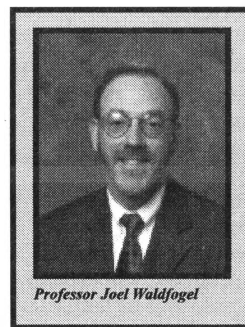
2007 MONROE-PAINE DISTINGUISHED LECTURE IN PUBLIC AFFAIRS

"THE TYRANNY OF THE MARKET: WHY YOU CAN'T ALWAYS GET WHAT YOU WANT"

PRESENTED BY

PROFESSOR JOEL WALDFOGEL

CHAIR & EHRENKRANTZ FAMILY PROFESSOR OF BUSINESS AND PUBLIC POLICY - THE WHARTON SCHOOL - UNIVERSITY OF PENNSYLVANIA



Professor Joel Waldfogel

MONDAY, OCTOBER 29, 2007

3:30-5:00 P.M.

JOPLIN/BOONE ROOM, N222/223 MEMORIAL UNION



2007/2008 "We Always Swing" Jazz Series

Presents:

The Yellowjackets



Thursday, November 8, 2007

The Blue Note
Doors 7:00 p.m.
Jazz In DISTRICT
Russell Ferante, *Keyboards*
Jimmy Haslip, *Bass*
Bob Mintzer, *Saxophones*
Marcus Baylor, *Drums*

Sponsored by:
GREGORY H. CROLL, M.D.
PLASTIC & RECONSTRUCTIVE SURGERY



Bill Charlap Trio



Sunday, November 18

Murry's
Shows at 3:30 and 7 p.m.
Sponsored by:



Waverly Seven/Anat Cohen Quartet



Sunday, December 2

The Blue Note
Doors 6:00 p.m.
Jazz In DISTRICT
Sponsored by:



INTERNATIONAL PROGRAMS AND STRATEGIC INITIATIVES

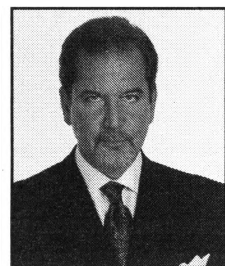
ticketmaster

Charge Line: 866/646-8849
Online: www.ticketmaster.com

Jazz Series Box Office
573/449-3001
218 N. Eighth Street
Columbia, MO 65201

info@wealwaysswing.org
www.wealwaysswing.org

The MU College of Business presents the Distinguished Alumni Lecture



Scott Rosenblum

Attorney • Rosenblum, Schwartz, Rogers & Glass

Rosenblum is considered to be one of the top St. Louis criminal defense attorneys. He graduated from MU with a BS BA degree in 1979 and earned his law degree from California Western School in 1983. His practice focuses on major felony offenses in the federal and state courts, at trial and on appeal, and he has tried over 150 jury cases. He is one of the founding members of Rosenblum, Schwartz, Rogers & Glass, P.C. In 2004, the Missouri Association of Criminal Defense Lawyers awarded Rosenblum the annual Charles Shaw Trial Advocacy Award, given to trial attorneys who exhibit excellence in the courtroom.

Thursday, October 25, 2007 • 3:45 pm
Bush Auditorium • Cornell Hall

This lecture is free and open to the public

College of Business
University of Missouri-Columbia

Parking is available on the upper level of Turner Avenue Garage. • 882.6768 • business.missouri.edu

BENEFITS from Page 1

changes to the premiums paid by employees for 2008, Hart says. "They will stay the same as they are right now."

Benefit information meetings scheduled

Representatives from Faculty and Staff Benefits and Coventry Health Care, the University's medical plan administrator, will conduct information sessions about the benefit enrollment change period and answer questions at the following times and locations:

MU campus

- Oct. 25 from 10:30-11:30 a.m. and 2-3 p.m. for active employees in 572 Life Sciences Center.
- Oct. 26 from 10:30-11:30 a.m. and 2-3 p.m. for active employees in 572 Life Sciences Center.
- Oct. 31 from 10-11:30 a.m. and 3-4:30 p.m. for active employees and 1-2:30 p.m. for retirees in S203 Memorial Union.
- Nov. 5 from 9:30-11 a.m. and 3-4:30 p.m. for active employees and 1-2:30 p.m. for retirees at the Old Alumni Center West Room.
- Nov. 9 from 9:30-11 a.m. and 2-3:30 p.m. for retirees at the Old Alumni Center West Room.

Hospital employees

- Oct. 29 from 9:30-11 a.m. and 2:30-4 p.m. for active employees in University Hospital's Acuff Auditorium.
- Oct. 30 from 9:30-11 a.m. and 2:30-4 p.m. for active employees in University Hospital's Acuff Auditorium.
- Nov. 1 from 7:30-9 a.m. and 9:30-11 a.m. and from 3-4:30 p.m. for active employees in Columbia Regional Hospital's Conference Room 5.
- Nov. 6 from 9:30-11 a.m. and 2:30-4 p.m. for active employees in University Hospital's Acuff Auditorium.

BUDGET from Page 2

and to state legislators. "The message we send to anybody is heard by everybody," Foster said. "Our message is not, 'the sky is falling,' because that affects everything. Would you want to send your kid to a university that is going down the tubes? Would you want to give grants to an institution that is falling apart?"

"We are in a precarious position, but the sky is not falling. The message we want to get out is that we have some very daunting financial issues we have to deal with," he said. "We have to be a compelling resource for the whole state of Missouri, which we are."

University Libraries
University of Missouri

Digitization Information Page

Local identifier MizzouWeekly(print)

Source information

Format Newspaper
Content type Text with images
Source ID Duplicate copies University Archives weeded out
Notes

Capture information

Date captured July-December, 2022
Scanner manufacturer Plustek OpticBook
Scanner model A300 Plus
Scanning system software Book Pavilion
Optical resolution 600 dpi
Color settings 8 bit grayscale for majority of pages;
 24 bit color for color illustrations/portraits/photographs
File types tiff
Notes

Derivatives - Access copy

Compression Tiff: LZW compression
Editing software Adobe Photoshop 2022
Resolution 600 dpi
Color same as captured
File types pdf created from tiffs
Notes Images cropped, straightened, and brightened.