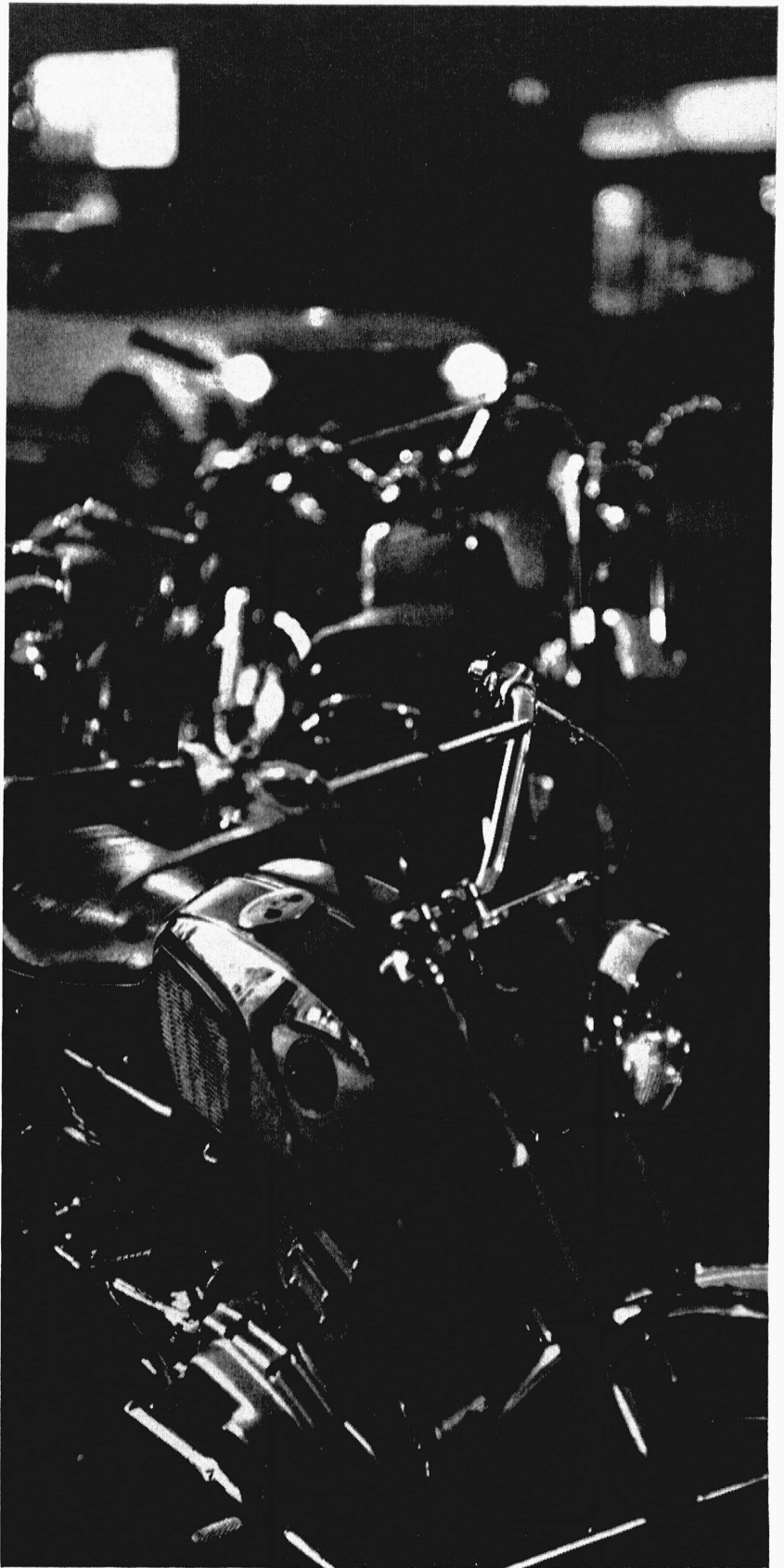
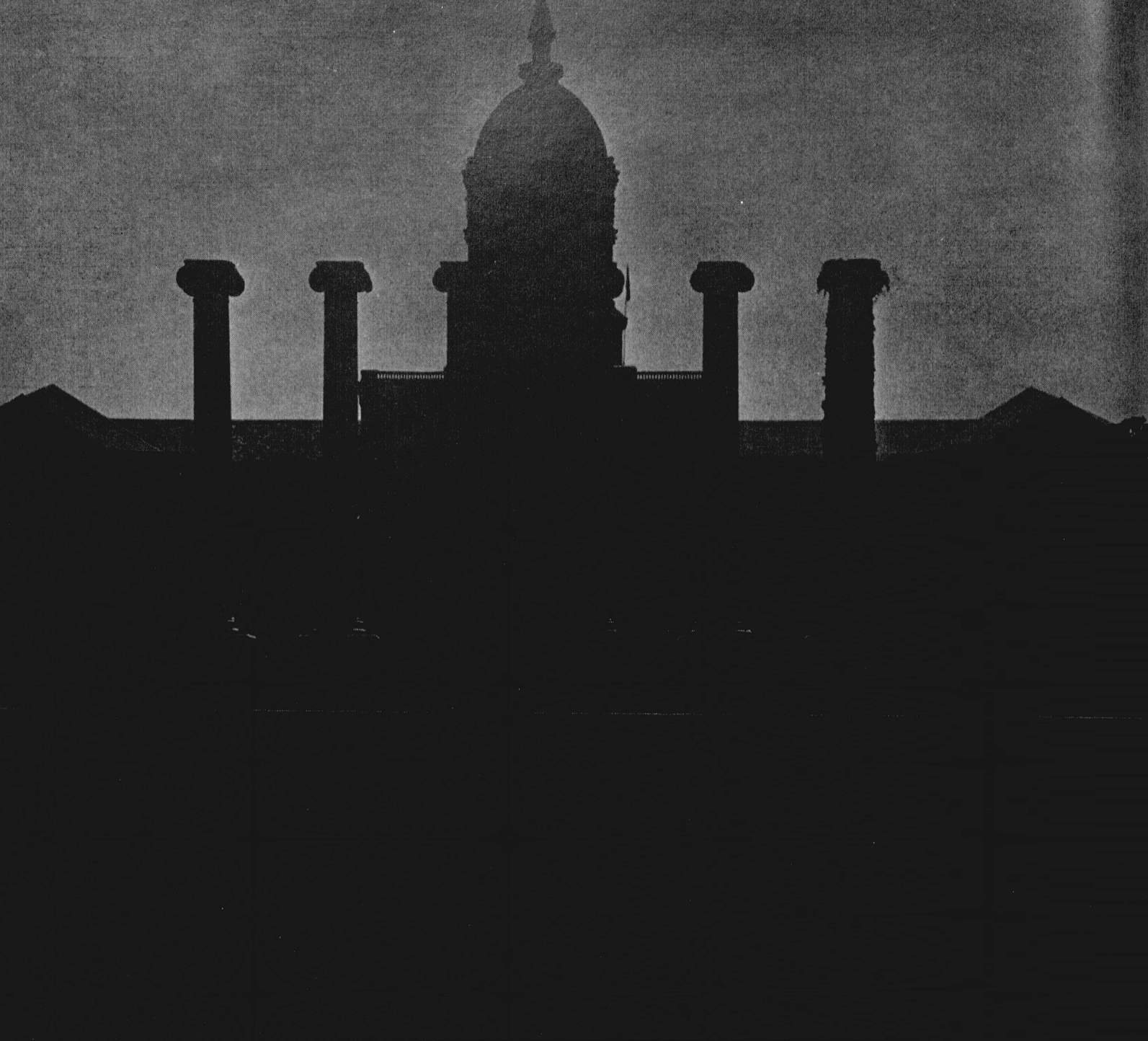


GARDNER AT RANDOM

Until his graduation two years ago, George W. Gardner was this magazine's regular photographer. Returning to the campus recently—after Africa, a military stint, and much successful free-lancing—he was asked to photograph whatever interested him. He visited one of his former professors, Carl H. Chapman (below). An old cyclist himself, he liked the row of motorcycles parked near classrooms.







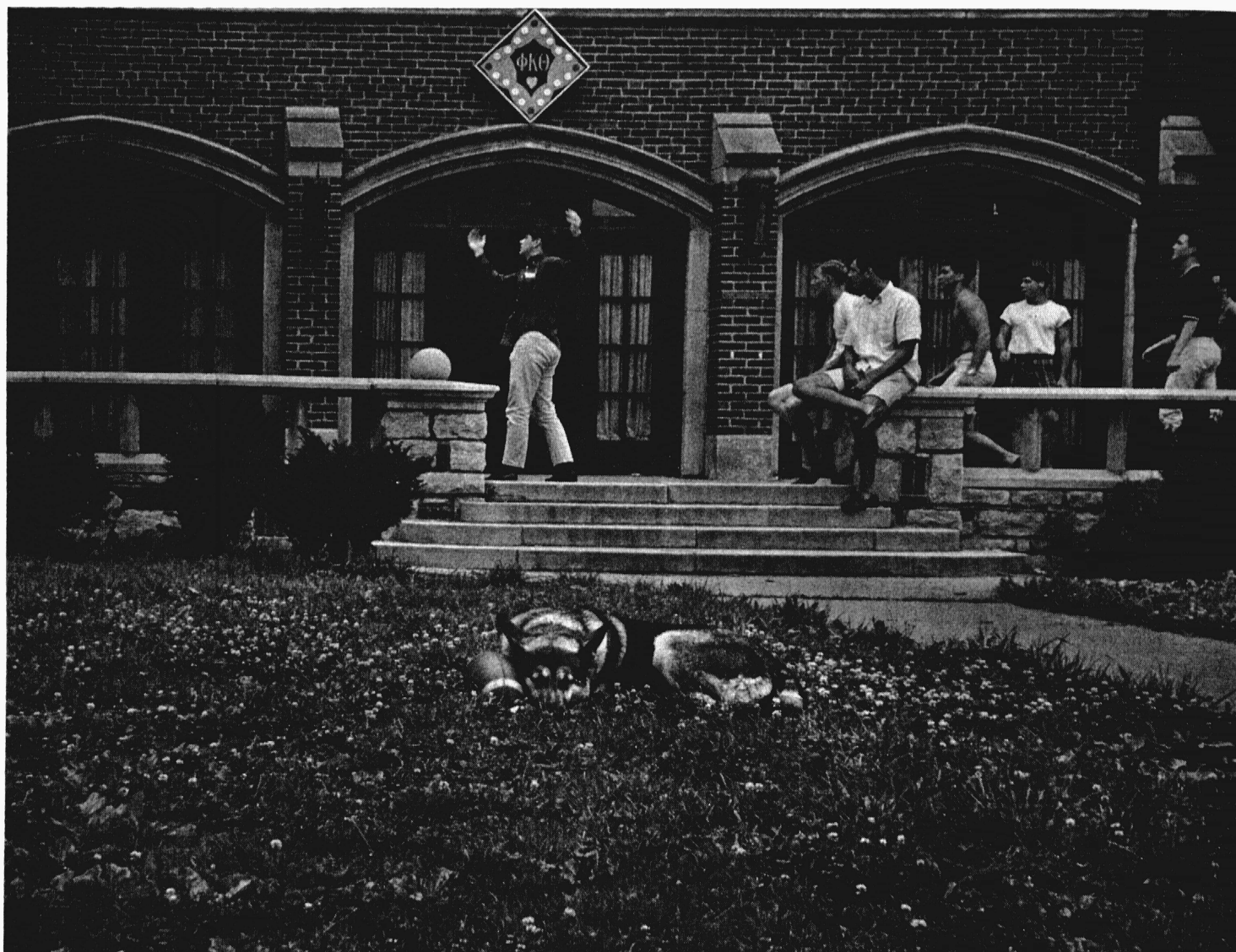
THE COLUMNS

The University of Missouri, first university established west of the Mississippi River, is the oldest of our nation which upon the basis of Assembly Hall has attained national prominence in the sciences. Assembly Hall was built 1820-1828. Plans made by A. Mitchell, Chief Engineer of the 1820 Missouri State Capitol. The building consisted of a central hall and two wings. The additional wings were added in 1832. The central portion, seventy feet wide and one-half inch high and twenty-three feet wide, was supported by the original four columns, each four feet high. Work for the building was begun in 1820. The design for the columns was obtained from the Pinkney Creek Valley and located by the architect, George Catlin, on January 9, 1822. Assembly Hall was completed in 1828. The columns were designed by the artist, The Board of Regents, and the artist, George Catlin, through the efforts of which they were allowed to stand. Many beautiful specimens of the columns were furnished to various governments and institutions. They bear the names of the states of Missouri and Faculty who have passed under their shadow.

*Finding something new, the
marker for the Columns,
Gardner promptly recorded
the striking view at left.
A teacher in deep thought
provides another subject
for the photographer
on his campus rounds.*



Some things are timeless . . .



*The horseplay . . . the contented mascot dog . . . the boy and girl
beneath a tree. However long one is away from the campus,
he finds on his return many familiar scenes unchanged.*

