

DEPARTMENT OF FAMILY & COMMUNITY MEDICINE

UNIVERSITY OF MISSOURI | SCHOOL OF MEDICINE

2017-2018 HOUSE STAFF

Chief Residents



Krystal Foster, MD
Family Health Center



Sarah Kirchhoff, MD
Fulton



Andy Peterson, MD
Fulton

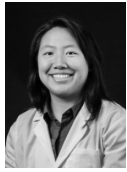


Tim Ratliff, DO
SP-Blue

Third-Year Residents



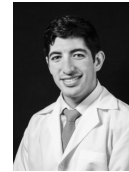
Chase Beliles, MD
Fulton



Shari Chang, MD
SP-Blue



Patrick Granneman, DO
Fayette



Andrew Hinojosa, MD
SP-Green



Becca Hogg, MD
Family Health Center



Katie Martinez, MD
SP-Green



Drew Satterfield, DO
Fulton



James Tucker, DO
Fayette

Second-Year Residents



Nick Bratten, MD
SP-Blue



Ben Crary, DO
Fulton



Geoffrey Dankle, MD
Fulton



Brady Fleshman, MD
SP-Gold



John Jayroe, MD
SP-Green



Kristen Killen, MD
Family Health Center



Parker Kohlfeld, MD
Fulton



Kaci Larsen, MD
Fayette



Stephanie Lersch, MD
Family Health Center



Kaitlin Saucier, MD
Fayette



Calvin Tai, MD
SP-Blue



Aaron Wood, MD
Family Health Center

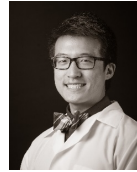
First-Year Residents



Joshua Bacon, MD
Fulton



Lisa Camilleri, MD
SP-Gold



Justin Chang, MD
SP-Gold



Gabriel Eljdid, DO
SP-Gold



Stephanie Espinoza, MD
Family Health Center



Tyler Gouge, MD
Fayette



Jonathan Hoskins, MD
Fayette



Eric Kadlec, MD
Fulton



Mary Murphy, MD
SP-Green



Misty Todd, MD
Fulton



Carl Tunink, MD
Fulton



Lisa Wadowski, MD
SP-Blue

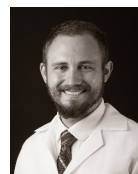
Integrated Residents



Alex Finck
Fayette



Colin McDonald
Family Health Center



Zach Treat
Fulton