

# MISSOURI FOOTBALL



*"More things are wrought by prayer  
than this world dreams of--"*

**DISTRIBUTED**

**TO**

**ACTIVE  
MEMBERS**

**BY**

**UNIVERSITY  
OF MISSOURI  
ALUMNI  
ASSOCIATION**

**1953**

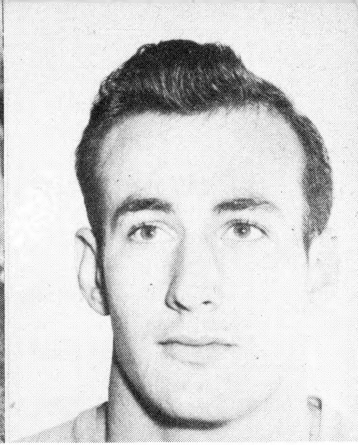
## 1953 SCHEDULE

Sept. 19--Maryland at Columbia . . . . .	2:00 p.m.*
Sept. 26--Purdue at Columbia . . . . .	2:00
Oct. 3--Colorado at Boulder . . . . .	2:00 (MST)
Oct. 9--Southern Methodist at Dallas . . . . .	8:00
Oct. 17--Iowa State at Ames . . . . .	2:00
Oct. 24--Nebraska at Columbia (Homecoming) . . . . .	2:00
Oct. 31--Indiana at Bloomington . . . . .	1:30 (EST)
Nov. 7--Oklahoma at Columbia . . . . .	2:00
Nov. 14 --Kansas State at Columbia. . . . .	2:00
Nov. 21--Kansas at Lawrence . . . . .	2:00

\*All times are Central Standard, unless otherwise special.

## 1952 SCORES AND ATTENDANCE

Missouri 10,	Maryland . . . . .	13 . . . . .	(23,167)
Missouri 14,	California . . . . .	28 . . . . .	(46,000)
Missouri 26,	Kansas State . . . . .	0 . . . . .	(15,191)
Missouri 7,	S. M. U. . . . .	25 . . . . .	(26,183)
Missouri 7,	Oklahoma A & M . . . . .	14 . . . . .	(22,000)
Missouri 19,	Iowa State . . . . .	0 . . . . .	(16,160)
Missouri 10,	Nebraska . . . . .	6 . . . . .	(38,171)
Missouri 27,	Colorado . . . . .	7 . . . . .	(17,271)
Missouri 7,	Oklahoma . . . . .	47 . . . . .	(43,393)
Missouri 20,	Kansas . . . . .	19 . . . . .	(28,315)
	<u>147</u>	<u>159</u>	<u>275,851</u>



Cover picture of Missouri bench was taken during last three minutes of 1952 Missouri-Kansas game, as Jayhawks moved goalward in bid for a winning score. Player kneeling, head bowed in prayer, is Maurice Udell (left), senior offensive right end from Excelsior Springs.

This dramatic picture was snapped by Udell's sister, Mrs. Mary Howard of Wichita, Kansas.

## TABLE OF CONTENTS

Ol' Mizzou Briefs . . . . .	2
The Athletic Department staff. . . . .	2
Missouri's Athletic Committee . . . . .	2
Don Faurot . . . . .	3
Don Faurot's All-time Record . . . . .	5
The Coaching Staff. . . . .	6
Mizzou Football-1953 . . . . .	10
Missouri Probable Three-deep Lineup . . . . .	12
About the Players . . . . .	13
Pronunciation Guide . . . . .	25
Tigers' 1952 All-Opponent Team . . . . .	25
University of Missouri . . . . .	26
Officials for Mizzou's 1953 Games . . . . .	27
1953 Football Roster . . . . .	28
Facts, Figures on 1953 Opponents . . . . .	30
All-time Scores Against '53 Opponents . . . . .	32
Conference Football Champions. . . . .	35
Tiger's 1952 Game-by-game Story . . . . .	36
Individual Statistics 1952 . . . . .	36
Home of the Missouri Tigers . . . . .	37
1952 Team Standing . . . . .	37
Missouri's All-conference Selections . . . . .	38
Missouri's All-time Football records . . . . .	39
Missouri Team Records. . . . .	41
Miscellaneous . . . . .	42
Former Tiger Players in Professional Football . . . . .	43
Leading Tiger Scorers . . . . .	44
East-West Shrine Game Participants. . . . .	44
A Brief History of Football at Missouri . . . . .	45
Year-by-year Football Record . . . . .	48

## OL' MIZZOU BRIEFS

LOCATION -- Columbia, Mo.                      POPULATION -- 31,500  
ENROLLMENT -- 8,000 (co-ed)                      FOUNDED -- 1839  
STADIUM -- Memorial                              CAPACITY -- 40,000  
NICKNAME -- Tigers                              COLORS -- Old Gold and Black  
BAND -- 80 pieces (directed by George Wilson)  
CONFERENCE -- Big Seven  
CONFERENCE REPRESENTATIVE -- Dean Sam B. Shirky  
TICKET PRICES --

Season tickets -- \$12.50

Single Game Admission -- \$3.60

## THE ATHLETIC DEPARTMENT STAFF

Director of Athletics . . . . . Don Faurot  
Executive Secretary. . . . . V. L. Spurling  
Asst. Executive Secretary . . . . . John Moore  
Head Football Coach . . . . . Don Faurot  
Asst. Football Coach . . . . . John Simmons  
Asst. Football Coach . . . . . Chauncey Simpson  
Asst. Football Coach . . . . . Huston Betty  
Asst. Football Coach . . . . . Clay Cooper  
Asst. Football Coach . . . . . Harry Smith  
Freshman Line Coach . . . . . John Kadlec  
Head Basketball Coach . . . . . Wilbur Stalcup  
Asst. Basketball Coach. . . . . Gerald Hedgepeth  
Head Baseball Coach . . . . . John Simmons  
Head Track Coach . . . . . Tom Botts  
Trainer . . . . . Oliver J. DeVictor  
Equipment Manager. . . . . Charles Rhodes  
Program Manager. . . . . Harry Ice  
Publicity Director . . . . . Bill Callahan

## MISSOURI'S ATHLETIC COMMITTEE

Dean Sam B. Shirky, Chairman                      Mr. Dutton Brookfield,  
Dean Loran G. Townsend                              Kansas City, Mo.  
Dr. D. A. Hindman                              Mr. Elmer Weber, St. Louis, Mo.

## DON FAUROT

*Director of Athletics  
and  
Head Football Coach*



One of football's top honors fell to Don Faurot last January when the veteran mentor took over the gavel as incoming president of the American Football Coaches Association.

Recognized as a top-flight grid tactician, as well as an outstanding leader of young men, Faurot's success in the coaching world is reflected in his long tenure at Missouri. As an administrator, his directorship of the University's athletic program has been firm, progressive and visionary.

The slender, jut-jawed Faurot starts his 16th season of head coaching at Missouri in 1953. During the last decade, at least a dozen major colleges have tempted him with more attractive coaching offers--but Faurot has always elected to stay put at Missouri.

This summer Don was honored by his native state, when Missouri sportswriters elected him and Bill Corum, sports columnist and president of Churchill Downs, to Missouri's Sports Hall of Fame. They joined such other home-bred notables as Carl Hubbell, Casey Stengel and Dr. F. C. "Phog" Allen. Fittingly, Faurot was selected as he enters his 25th season as a collegiate head coach.

Faurot and Missouri have climbed hand-in-hand into football's big-time. It's been a happy, healthy and prosperous relationship. He believes staunchly in the University of Missouri's athletic policy, its recruiting philosophy and its scholarship plan. Athletically, the University has pursued a policy of scheduling opponents of accredited major institutions. In recruiting high school athletes, it has been Faurot's aim to staff his teams with home-grown talent. He feels that--so long as topflight athletes in the state continue to enroll at the University--Tiger teams will always give all opponents ample competition.

Now a trim, "youthful-looking" 51-year-old, Faurot can look back on 24 collegiate coaching seasons--and two others as skipper of service teams during World War II. He was hired as the Tigers' grid mentor in

1935 after a nine-year coaching tour at Kirksville (Mo.) State College. He became athletic director at Mizzou in 1946.

Missouri football has prospered under Faurot. His record shows 86 wins against 56 defeats and 8 ties. In the overall picture, his teams have won 149 games, lost 69 and tied 11 over a 24-year span. At Kirksville, his clubs had won seven M.I.A.A. conference championships, and had piled up a winning streak of 26 straight when Mizzou beckoned.

Faurot lifted Missouri into national prominence by winning his first Big Six title in 1939, and repeating as the league's kingpin in 1941 and 1942. These were the years that produced three Tiger All-Americans--quarterback Paul Christman, center Darold Jenkins and halfback Bob Steuber. The '39 squad bagged Missouri's first bowl (Orange) invitation--and three other Faurot-coached teams have since figured in post-season affairs. These were the 1941 (Sugar), 1948 (Gator) and 1949 (Gator) squads. The 1945 Tigers under Coach Chauncey Simpson went to the Cotton Bowl.

Faurot's offensive creation--the Split T Formation--is now in widespread use by major colleges over the nation. He innovated the system at Missouri in 1941, and started popularizing it during his three-year Navy hitch (1943-45). His Iowa Pre-Flight Sea-Hawks lost only to Notre Dame, and the next year Faurot moved to Jacksonville, Fla., where he coached the Naval Air Station team.

As an undergraduate at Missouri, Faurot lettered in football, basketball and baseball. He was a fullback on Gwinn Henry's '23 and '24 teams--playing weight 150 pounds--and also captained the basketball team. Graduated in 1925, he coached the Tiger freshmen one year, and also completed his requirements for an M.A. degree.

Faurot married the former Mary Davidson of Hannibal in 1927. They have three daughters--Jane 20, Aileen 17, Julie 13.

The twenty-third head coach in Missouri's football history, Faurot was born at Mountain Grove, Mo., on June 23, 1902.



Kansas game....Officer directly behind Faurot and halfback Jim Hook is Phil Klein, former quarterback of the Tigers.

*DON FAUROT'S ALL-TIME RECORD*

SCHOOL	YEAR	WIN	LOSE	TIE	SCHOOL	YEAR	WIN	LOSE	TIE
Kirksville Teachers	1926	7	1	0	Missouri	1935	3	3	3
Kirksville Teachers	1927	8	1	0	Missouri	1936	6	2	1
Kirksville Teachers	1928	7	2	1	Missouri	1937	3	6	1
Kirksville Teachers	1929	5	3	1	Missouri	1938	6	3	0
Kirksville Teachers	1930	5	5	0	Missouri	1939	8	2	0
Kirksville Teachers	1931	6	1	1	Missouri	1940	6	3	0
Kirksville Teachers	1932	8	0	0	Missouri	1941	8	2	0
Kirksville Teachers	1933	9	0	0	Missouri	1942	8	3	1
Kirksville Teachers	1934	8	0	0	Missouri	1946	5	4	1
<b>TOTALS</b>		<b>63</b>	<b>13</b>	<b>3</b>	Missouri	1947	6	4	0
					Missouri	1948	8	3	0
					Missouri	1949	7	4	0
					Missouri	1950	4	5	1
					Missouri	1951	3	7	0
					Missouri	1952	5	5	0
					<b>TOTALS</b>		<b>86</b>	<b>56</b>	<b>8</b>
					<b>GRAND TOTALS</b>		<b>149</b>	<b>69</b>	<b>11</b>

## THE COACHING STAFF

**CHAUNCEY SIMPSON** (Kirksville Teachers 1928) -- Simpson took over guardianship of the freshman football squad in 1952, a season that marked his 18th year of continuous coaching service at Mizzou. He came to Columbia with the Faurot regime in 1935.



Last year Chauncey turned out a yearling grid squad that was regarded as the best post-war freshman group at Missouri. His freshmen defeated Iowa State, 41-14, and Kansas, 25-7 and several of the better prospects off that squad may be ready for varsity duty this season.

Simpson relinquished the job of varsity backfield coach to handle the freshmen. During Faurot's Navy tour (1943-45), "Chaunce" was head coach of the Tigers. His 1945 team won the Big Six title, and went on to the Cotton Bowl.

Until 1944, Simpson was also head man in track, and he still is Mizzou's golf coach. One of Columbia's better golfers, the 51-year-old linksman successfully defended his Country Club city title again last summer. It was his fifth city championship.

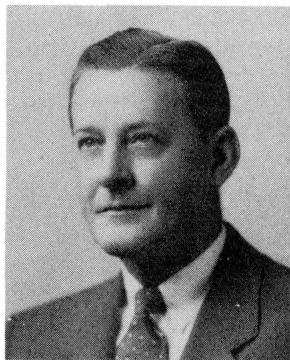
As an undergraduate, Chauncey lettered in football and track at the University, before transferring to Kirksville. There, he played under Faurot in football, basketball and track, and stayed on at Kirksville to coach the backfield.

Married, Simpson has two sons--George 19, a sophomore in the University, and Charlie 11. A fine high school hurdler, young George will be a candidate for the M. U. track team this winter.

**JOHN "HI" SIMMONS** (Kirksville Teachers 1928) -- Dually occupied as a varsity assistant and chief scout last season, Simmons worked chiefly with the ends and the defensive platoon as a unit.

A long-time scout for Mizzou, "Hi" will combine this chore with handling the ends again this year. There is generally good talent returning at end, but no size among the top-rated candidates.

Simmons was a member of the incoming Faurot regime in 1935, having played three sports for the new Tiger mentor as an undergraduate at Kirksville. After graduation from high school, Simmons first coached at Milan high school for one year, and then moved to Mountain Grove high where he spent the next six seasons.

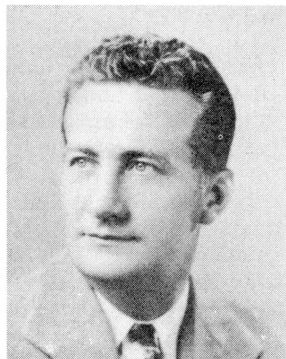


Named baseball coach in 1937, "Hi" has since turned out five conference championship teams. In 1951, his M. U. baseballers compiled the best record in the school's history--20 won, 7 lost--en route to a runnerup finish for the National Collegiate title.

Simmons spent three years in the Navy during World War II. A native of Lancaster, Mo., he is married and has three sons--John Jr. 11, Don 6 1/2, and Robert 3 1/2.

**HUSTON "HOOT" BETTY** (Missouri 1938) -- A center on Faurot's first Missouri team, Betty shares line-coaching responsibility with Harry Smith. Training the centers and linebackers is Betty's primary task.

The 36-year-old former all Big Six center returned to his alma mater as coach in 1940. He was called to active duty in 1941, however, and spent the next five years in service. He rejoined the staff late in 1945.



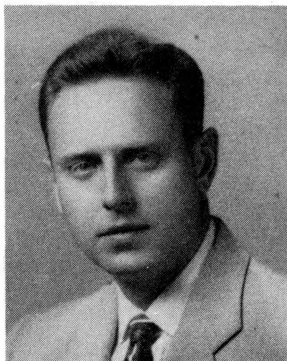
Last year, "Hoot" and Simmons were delegated to work entirely with the defensive platoon, a partnership that produced one of the more spirited defensive units seen in Tigerland in recent years.

Aside from his coaching duties, Betty helps with administrative details in the director's office.

A major with the Fourth Infantry division in World War II, "Hoot" made the D-day invasion and fought with his division through the Battle of the Bulge. He was awarded the silver and Bronze stars and five battle stars.

Betty is married and has a son, Keith, age 11. He is a native of Kirkwood, Mo.

**CLAY COOPER** (Missouri 1940) -- Backfield coach of the Tigers was Cooper's new title, and responsibility, last season. The one-time three-sport athlete at Missouri also helped direct the "B" team.



As backfield tutor, Clay had the satisfaction of seeing M. U.'s 1952 unit out-rush its foes. This was the first time in three years that Tiger backs evidenced punch on the ground.

A halfback on the '37, '38 and '39 Missouri teams, Clay earned a total of nine letters while competing in basketball and track as well. He has been on the Tiger coaching staff since 1947, and has been freshman basketball boss since 1949.

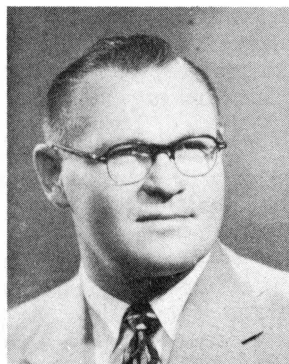
Cooper's first coaching job was at Joplin high in 1941. He left to enter the Navy in 1942, eventually serving aboard a P-T boat. After his discharge, he was hired as a graduate assistant at Missouri, and joined the staff on a full-time basis the next year.

The 35-year-old former Columbia athlete is married, and the father of four girls. His children are: Georgiann 11, Sally 9, Julie 6 and Christy 1.

**HARRY SMITH** (Southern California 1940) -- One of the Trojans' all-time grid immortals, "Smitty" rejoined the Missouri staff last year to instruct the guards and tackles. The former two-time All-American guard at USC was first hired by Faurot in 1941.

He inherits a sizeable coaching load this year, what with Mizzou's guard and tackle slots worn thin by graduation. There are few experienced hands on the roster, especially at the guards.

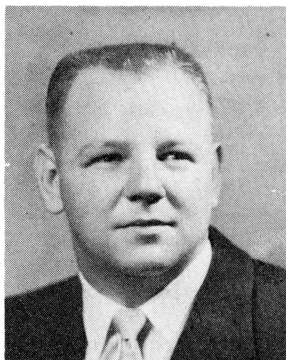
Smith left the Tiger coaching staff in 1943 to take a defense job, but signed a new Missouri contract in 1946. He then accepted the freshman coaching post at USC--his alma mater--in 1949. From there, he moved to the Canadian professional football league in 1951, and bossed the Saskatchewan Rough Riders. When a line-coaching vacancy occurred here in 1952, Smitty came back to the M. U. coaching fold for the third time.



Two years ago, big Harry was honored by being chosen to the Associated Press all-time second All-American team. Upon completing his collegiate career, Smitty captained the College All Stars in their annual game with the pro champions. He then played the 1940 season with the Detroit Lions.

Now 34, Smith is married and has two children--July 7 and Harry Jr. 4.

**JOHN KADLEC** (Missouri 1951) -- Most recent addition to the Mizzou board of strategy is this rugged guard, who won all-conference laurels on the Tigers' 1950 squad.



Kadlec was a mainstay on both the '48 and '49 M. U. teams which played in the Gator Bowl. At the close of his senior campaign, John was selected to participate in the East-West and Senior Bowl Games.

Drafted by the Washington Redskins, Kadlec tried out for professional ball last summer--but decided to follow a coaching career. As a graduate assistant, he aided Chauncey Simpson as freshman line coach of the '52 squad, and was recently added to the staff on a full-time basis.

The 24-year-old native of St. Louis is married, and has one daughter, Judy, age 1 1/2.

**OLIVER J. "OLLIE" DeVICTOR** (Penn State) -- "Doc Ollie" has been at the trainer's trade for 40 years, one of the real deans in his profession.

In 1923, Ollie put the wraps on Penn State's Rose Bowl team. His subsequent tours of duty took him to Pittsburg, under Glenn Warner and Jock Sutherland, and Washington University in St. Louis, prior to being hired at Missouri

At Washington U., DeVictor was the trainer on Jimmy Conzelman's staff. He left there to join the Tigers in 1935.

Ollie probably is the "bowlingest" trainer in the business. He has taped athletes for nine different bowl games. These excursions have taken him to the Rose Bowl three times, to the Gator Bowl twice, and to the Orange, Sugar, Cotton and North-South Senior Bowls once.



## MIZZOU FOOTBALL--1953

A fair-to-middlin' football team is the 1953 forecast at Missouri.

That analysis of Coach Don Faurot's 16th Tiger squad isn't designed to whet the imagination of Mizzou's grid fandom, but it stands as a pretty valid "early line" on the Gold and Black this season.

The chore confronting Faurot and his veteran staff is two-fold: They must put together a remodeled backfield, which will be minus three of 1952's top offensive guns--Jim Hook, Bill Rowekamp and Nick Carras. In the line, they must plug under-staffed tackle and guard positions with new talent.

This patchwork needs be accomplished early, too, what with Maryland and Purdue coming on as the opening 1-2 wedge in a tough ten-game schedule. Yet, in spite of the schedule, key losses and some threadbare positions, Faurot thinks his 1953 outfit can improve on last year's overall mark of 5 won and 5 lost.

Predicting that his Tigers will "adapt quite well to the one-platoon system", revived by off-season rules makers, Split T Boss Faurot is mostly concerned about the backfield picture.

"We're not so worried about the ability of our top players to go both ways, as we are about the problem of rebuilding our backfield. Rowekamp, Hook and Carras are gone, and these boys provided most of our punch last season."

The Faurot mouthful is more vividly illustrated by final 1952 statistics. For the first time in three years, Ol' Mizzou out-rushed its foes last season, with a slim 1866 to 1852 edge in yards gained from scrimmage. Of this 1866-yard total, the Hook-Rowekamp-Carras trio accounted for 1707 yards. Hook finished as the loop's No. 3 ball-carrier behind OU's Billy Vessels and Buck McPhail, while Rowekamp was No. 5 in Big Seven rushing yardage.

Muddling the September picture is the fact that the top backfield candidates didn't get a chance to work together last spring. Four key performers missed the workouts for one reason or another. Vic Eaton, No. 2 quarterback, was out with a back injury. Ray Detring, outstanding as a freshman fullback, was hospitalized with a lengthy siege of yellow jaundice. A hernia operation kept halfback Ed "Skimp" Merrifield sidelined, while Bob Schoonmaker, another halfback, was on the baseball squad.

Even with all hands on deck Sept. 1, Faurot and Backfield Coach Clay Cooper won't find a breakaway threat--a Rowekamp or a Hook, that

is--among the top-rated backs. This could mean that Missouri may put more emphasis this year on the passing arm of quarterback Tony Scardino, the only returning backfield regular. Better equipped at end than any other position, Mizzou would have good receivers handling Scardino's pegs. The little junior ranked second among the league's passers in 1952.

In the early speculation at least, the leading candidates by positions in M. U.'s backfield will be: QB--Scardino and Eaton; LH--Schoonmaker and Guy Rose; RH--Merrifield and Jack Fox; and FB--Bob Bauman and Detring. All are lettermen except Fox--a 1952 squadman--and Detring, sophomore newcomer.

If the offense develops pleasingly, Faurot should not be overburdened with defensive problems in the secondary. His entire secondary returns intact, and it includes such tested performers as Terry Roberts, second-team all-conference linebacker; Schoonmaker, who called defensive signals in '52; and Merrifield, an all-Big Seven first team choice at safety.

In the line, graduation heavily depleted the guard and tackle ranks--and then the loss of guard Jim Martin to the Army further slimmed the team's resources. Altogether, Missouri lost four lettered tackles--Paul Fuchs, Don Borgschulte, Don Rutter and Herb Gellman--and three veteran guards--Martin, Jack Lardo and co-captain Bob Castle.

Return of Julian Boyd, 1950 letterman, from service should prop the tackles, but untried players for the most part will make up the guard and tackle reserves.

Most spirited scrap for starting jobs should be evident at end, with seven holdovers sparring for the first-string call. Here, as at all other positions, the yardstick will be: "Who is the best two-way performer on offense and defense?"

Veteran ends will include: John Willson, Jim Jennings, John Hurley, Pete Corpeny, Mark Stein, Don Hanners and John Piskulich. Of this group, Hanners' fitness is questionable after a late-spring knee operation. Neither Stein nor Piskulich lettered last season.

Aside from Boyd, the tackle corps lists only Charlie Phillips and Charlie Bull as seasoned combatants. Just as hard-hit are the guards, where Roberts, Ted Follin and Ray McMichael are the expected mainstays. Follin was inactive this spring with a stomach ailment.

At center, Loyd Brown and Norden Stefanides, who divided the offensive-defensive load last year, are back--assuring some depth in

the pivot spot; however, Stefanides also was on the disabled list last spring with a brothersome knee.

Biggest hope in the Tiger camp is that several sophomores will make their mark early enough to reinforce the varsity at critical positions. Last year's yearling squad, which won from Iowa State, 41-14, and from Kansas, 25-7, was regarded as the best post-war freshman group at Mizzou.

Here are the best-looking recruits of that team who're touted are most likely to succeed with the 1953 varsity: End--Harold Burnine; Tackles--Alvin Portney, Mel Thomas and Glenn Hachman; Center--Tony Karakas; Halfbacks--Bill Curley, Tom Morrell, John Powell and Bob Musgrave; and Fullback--Ray Detring.

Missouri goes into the '53 campaign with 22 lettermen, 19 of whom won their "M" last season.

## MISSOURI PROBABLE THREE-DEEP LINEUP

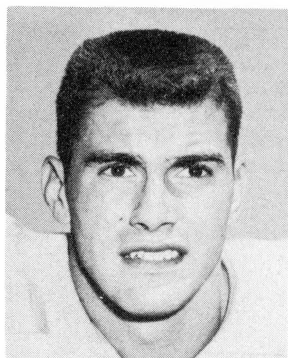
(As of Sept. 1)

(Lettermen are underlined -- "O" or "D" indicates each man's specialty last season).

- LE -- Jim Jennings (O), John Willson (D) and Pete Ekern (O), squadmen in 1952.
- LT -- Charles Phillips (D), Mel Thomas (O), Freshman regular, and Glenn Hachman (D), freshman regular.
- LG -- Terry Roberts (D), Wayne Swetnam (D), squadman in 1952, and Jake Shiveley (D), squadman in 1952.
- C -- Loyd Brown (O), Norden Stefanides (D), and Tony Karakas (D), regular freshman linebacker.
- RG -- Ted Follin (D), Ray McMichael (D), and George Asastas (O), freshman regular.
- RT -- Charles Bull (O), Al Portney (D), freshman regular, and Julian Boyd (O), 1950 letterman returning from service.
- RE -- Pete Corpeny (O-D), Harold Burnine (O), freshman regular, and Jack Hurley (D).
- QB -- Tony Scardino (O), Vic Eaton (O), and Dudley Childress (D), freshman regular.
- LH -- Bob Schoonmaker (D), Guy Rose (D), Harold Thomeczek (D), or Tom Morrell (D), freshman regular.
- RH -- Ed Merrifield (D), Jack Fox (O), squadman in 1952, and Bill Curley (O), freshman regular, or Bob Musgrave (O), freshman Quarterback.
- FB -- Bob Bauman (O-D), Ray Detring (O), freshman regular, and Jim Milne (O), squadman in 1952.

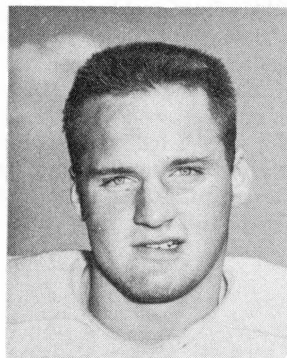
## ABOUT THE PLAYERS

### ENDS



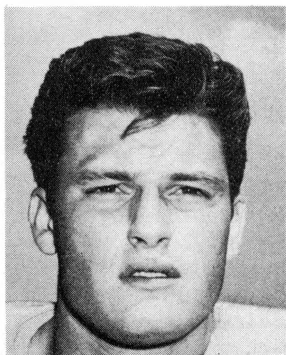
**BURNINE, HAROLD HENRY** -- 6-2  
. . .182. . .21. . .sophomore -- pegged as  
varsity timber this year. . .top receiver  
with yearlings. . .fast and agile, often makes  
the "circus-catch". . .is high-spirited,  
with an intense desire to win. . .must  
sharpen his defense. . .ex-serviceman. . .  
married. . .from Richmond.

**CORPENY, ELMER JAMES** -- 6-1  
. . .181. . .20. . .junior -- best end on the  
springtime roster. . .played both ways last  
season as a sophomore. . .well-schooled in  
all the fundamentals of end play. . .may be  
regular starter. . .from Southeast high in  
Kansas City.



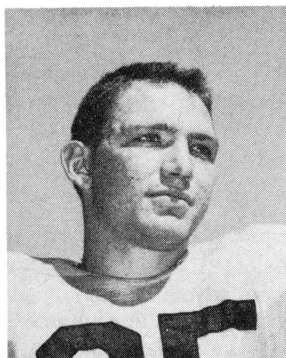
**EKERN, HERMAN PETER** -- 6-3. . .194. . .20. . .Junior -- has  
been "B" team end for two seasons. . .well-built and coordinated for a  
wingman, Pete could use more sustained fire and "meanness" to bolster  
his bid for a varsity job. . .good student. . .is strongest on offense  
. . .fifth of a family to play football at Mizzou. . .from Mexico.

**HANNERS, DONALD RAY** -- 6-1. . .188. . .23. . .senior --  
doubtful player in '53, because of a slow-mending knee. . .had cartilage  
operation last spring. . .lettered on offense last year, after returning  
from two-year hitch in Army. . .tossed key block in Bill Rowekamp's  
82-yard scoring run against Kansas. . .married. . .from Normandy.



**HURLEY, JOHN DAVID** -- 6-2. .196  
. .19. .junior -- a strapping regular  
with the defensive platoon last year as a  
sophomore. .was offensive end as fresh-  
man, and should be ready for two-way call  
. .blocks, tackles well. .tough, likes  
contact. .and is capable receiver. .in-  
tercepted a deflected pass in the Kansas  
game to set up Tigers' winning score. . .  
from Jefferson City.

**JENNINGS, JAMES BENTON** -- 6-3  
. .195. .19. .junior -- rangy and quick,  
"Ike" was offensive starter all last year. . .  
led pass-catchers with 14 grabs for 219  
yards. .excellent blocker and a dependable  
down-field tackler on punts. .reacts well,  
should qualify on defense easily. .with more  
consistency, he could be one of the loop's  
finest wingmen. .three-sporter in high  
school. .won all-state basketball honors,  
Class "A" indoor and outdoor 440 title, and  
placed second in shot put. .his home,  
Crystal City, is largest producer of Plate  
Glass in the nation.



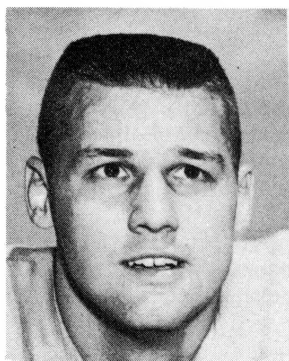
**PISKULICH, JOHN JOSEPH** -- 6-1. .187. .20. .junior --  
was "B"-teamer last season after lettering as a defensive end in his  
freshman year. .chunky junior must show improved footwork and  
agility to regain varsity rating in '53. .from Beaumont high school in  
St. Louis.

**RUDD, EUGENE LEE** -- 5-11. .196. .21. .sophomore --  
converted from guard this spring. .no previous experience as an end  
. .a transfer from Tulsa. .won all-state honors as prep. .from  
Sikeston.

**SAWYERS, JAMES LEWIS** -- 6-3. .195. .19. .sophomore  
-- defensive specialist for the yearlings. .had bone chips removed  
from ankle this summer, will miss early workouts. .from Maryville.

STEIN, MARK HARRIS -- 6 1/2 . . .175. . .20. . .junior -- gritty scrapper should climb back into the picture this year after undergoing knee operation last winter. . .appears sound of limb. . .good receiver, tough on defense. . .won letter as a freshman, but became a knee casualty early in '52. . .attended Southwest high in Kansas City.

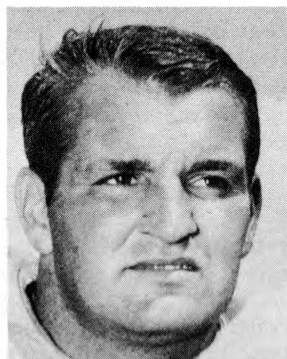
TANNER, NED WARNER -- 6-2. . .182. . .21. . .senior -- a two-year squadman who had a brief fling with the varsity early in 1951 . . .has seen mostly "B"-team action since. . .good place-kicker. . . from Sikeston.

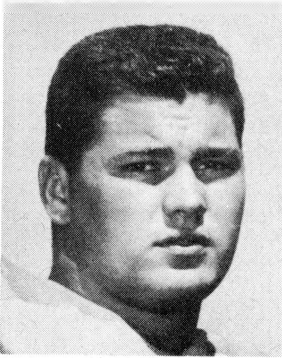


WILLSON, JOHN WILLIAM -- 6-1 . . .183. . .22. . .senior -- frail-looking veteran should have no trouble absorbing two-way routine. . .was offensive end in '51, snaring 18 passes for 239 yards. . .played entirely on defense last season. . .light but agile, and a fine competitor. . .graduate of East high in Kansas City.

### TACKLES

BOYD, JULIAN CLYDE -- 6-0. . . 206. . .24. . .senior -- returnee from service after lettering as offensive tackle in 1950. . .played service ball in Germany. . . solid and tough to uproot, especially stout on goal-line defense. . .could use more speed . . .diligent worker. . .from Caruthersville.





**BULL, CHARLES LUTHER** -- 6-1 . . 198. . .20. . .has unique distinction of having been a regular ever since opening game of freshman campaign. . .a two-year letterman. . .aggressive blocker. . .speed is big asset. . .was regarded as sound fundamentalist on arrival at Mizzou. . . has never played defensive football in college . . .from Maplewood-Richmond Heights.

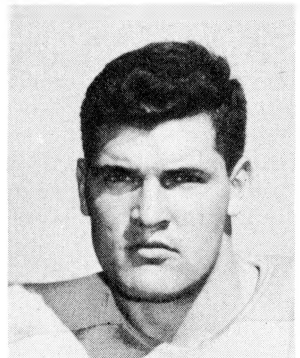
**FUCHS, WAYNE RICHARD** -- 6-2 . . 208. . .18. . .sophomore -- this marks the eighth, straight year that the name "Fuchs" has appeared on M. U.'s varsity roster. . .a cousin of Bob and Bill, both of whom were all-conference centers. . .improved steadily during the freshman season. . .from Christian Brothers College in St. Louis.

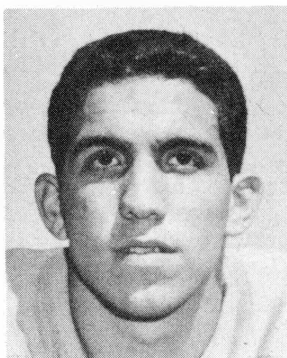
**GENTRY, CHARLES WILLIAM** -- 6-2. . .210. . .21. . .junior -- used mostly in defensive role for the "B"-team last season. . .has played center position. . .a shot-putter in track. . .from Paseo high in Kansas City.

**HACHMAN, GLENN** -- 6-0. . .218. . .19. . .sophomore -- big, active lineman who played regular offensive tackle for the freshmen . . .probably destined for "B"-team seasoning at the outset. . .from Roxana, Ill., where he played halfback as a prep gridder.

**PENDLETON, CHARLES** -- 6-1. . .198. . .20. . .sophomore -- regular defensive performer for the yearlings. . .steady, but not flashy. . .will work hard. . .highly coachable. . .from Central high in St. Louis.

**PHILLIPS, CHARLES WILLIAM** -- 6-4. . .207. . .20. . .senior -- two-year veteran and one of the squad's most aggressive front-liners. . .qualified to play either way well. . .big, rough, fast and capable-- could be the team's standout lineman. . .a bear on defense last year. . .against Kansas, he blocked one of Jayhawks' conversion tries (Roberts knocked down another) in 20-19 win . . .married. . .from Smith-Cotton high in Sedalia.





**PORTNEY, ALVIN** -- 6-1 1/2. . . 196. . .19. . .sophomore -- standout defensive tackle with the freshmen. . .broad-shouldered rookie owns exceptionally quick reflexes. . .adept at rushing the passer, and a dependable down-field blocker. . .must master offensive blocking technique. . . blocked punt against Iowa State, which led to a Tiger score. . .bothered by asthma, necessitating use of an atomizer during game. . .from University City.

**ROBERTSON, HOWARD** -- 6-2. . .207. . .19. . .sophomore -- an offensive specialist with freshman squad. . .needs to improve speed, and probably will be on "B"-team this year. . .from Granite City, Ill.

**RURY, WILLIAM EDWARD** -- 6-1. . .208. . .18. . .sophomore -- another recruit who probably will see "B"-team service this fall. . . defense his long suit. . .from Carbondale, Ill.

**SALMONS, RONALD LEE** -- 6-3. . .203. . .20. . .junior -- squadman last year. . .one of squad's fastest linemen. . .may move up into varsity contention this year. . .equally capable on offense and defense. . .Mizzou's top shot-putter, second in the K.U. Relays. . . from Central High in St. Joseph.

**THOMAS, MELVIN HENRY** -- 6-4. . .226. . .19. . .sophomore -- bulky newcomer was regular on freshman offensive unit, but was also used defensively in goal-line situations. . .biggest lineman on the squad. . .strong and comparatively mobile for his heft. . .diets extensively to stay in shape. . .offensive blocking his forte. . .could make it this year. . .from East St. Louis, Ill.

## GUARDS

**ANASTAS, GEORGE** -- 5-11. . .190. . .20. . .sophomore -- regular defensive guard with the freshmen. . .also handled offensive duties, and should be ready under the new rules. . .best as middle guard in five-man alignment. . .from Soldan-Blewett high in St. Louis.



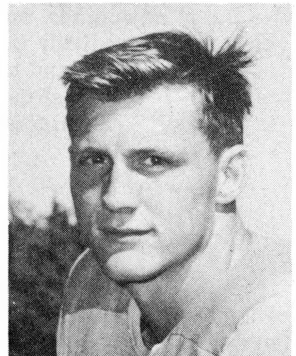
FOLLIN, TED -- 6-3. . .202. . .21  
. . .senior -- a two-year veteran with good  
all-around ability at both tackle and guard  
. . .especially effective on defense. . .is  
maneuverable, but not too fast. . .may be  
top entry for middle guard position. . .missed  
spring ball with stomach disorder. . .from  
Central high in St. Louis.

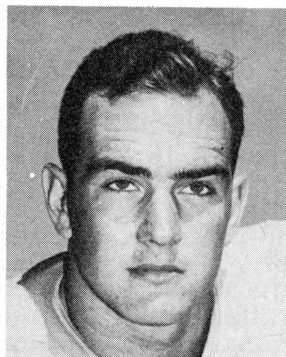
GILLHAM, RICHARD DAVISON -- 5-11. . .178. . .21. . .senior  
-- rugged two-year squadman. . .has seen most service on defense. . .  
fast afoot and a creditable linebacker. . .watch-charm type player,  
somewhat light for blocking. . .good student. . .from Springfield.

GOOCH, ROBERT RAY -- 6-0. . .191. . .18. . .sophomore --  
an offensive starter with the freshman team. . .good speed. . .may  
need another year of grooming. . .hard, conscientious worker. . .from  
Marceline.

HALL, CHARLES CLARK -- 6-1. . .190. . .19. . .sophomore --  
switched to guard this spring after numerialing as a freshman tackle. . .  
is fast and may develop into top-notch linebacker. . .has shown great  
improvement. . .from Mexico.

McMICHAEL, RAYMOND GEORGE --  
6-1. . .193. . .20. . .junior -- lettered as  
reserve guard in '52. . .shows flashes of  
ruggedness on defense, and has played some  
offense. . .must improve speed and re-  
actions to be solid contender for starting  
job. . .from Gower.





**ROBERTS, TERRY DAYLE** -- 6-2 . . .195. . .20. . .junior -- team's most surprising "find" last year as linebacker. . . made Omaha World-Herald's first all-conference team, and Associated Press second team. . .a sure-handed tackler with tremendous speed. . .has all the tools to develop into a capable offensive performer at guard. . .intercepted two passes during first half of California game last year. . .blocked one of K.U.'s extra-point kicks in final game . . .was high school end. . .from Carthage.

**SHIVELEY, J. W. II** -- 5-10. . .192. . .20. . .junior -- fastest on straightaway of all inner linemen. . .a strong, tough competitor who tackles well. . .offensive speed should entitle him to a good shot at varsity duty this year. . .from Odessa.

**SMITH, MAX DUANE** -- 5-11. . .218. . .19. . .sophomore -- converted from high school center to guard as freshman. . .barrel-chested and extremely active for his build. . .owns good shoulder block. . .apt student. . .from Boonville.

**SWETNAM, WAYNE ALLEN** -- 6-0. . .192. . .21. . .senior -- squadman for two years looked like varsity material in spring session . . .has steadily improved his speed and stability. . .saw two-way service on the "B"-team. . .plagued with minor injuries for last two years. . .from North Kansas City.

## CENTERS

**BROWN, LOYD RAY** -- 6-1. . .201 . . .21. . .senior -- hefty ball-snapper was team's regular offensive pivot last season . . .fast for his bulk and a solid blocker. . . will need to develop as a linebacker. . . should be top candidate for No. 1 job. . . from North Kansas City.



DOUGLASS, JAMES -- 5-11. . .182. . .20. . .junior -- "B"-teamer last year. . .best on defense. . .handicapped by lack of size . . .plenty of determination. . .good golfer. . .from Normandy high in St. Louis.



KARAKAS, TONY -- 6-0. . .180. . .21. . .sophomore -- a grim, all-business newcomer who tackles fiercely. . .regular linebacker for the yearlings. . .fast, pursues play well. . .though a lightweight for blocking purposes, he should bolster the center brigade this year. . .played service ball with the Marines. . .from Soldan high in St. Louis.

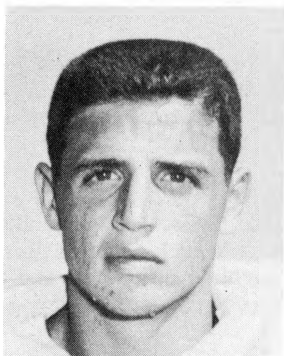
STEFANIDES, V. NORDEN -- 6-1 . . .192. . .22. . .junior -- a "rookie" in '52, "Steff" took over a first-team backup assignment--and proved a competent hand . . .missed spring practice with a bad leg. . . a transfer from Purdue. . .plans veterinary career. . .now lives in Cabool.



## QUARTERBACKS

BRASE, JOHN EDWIN -- 5-10. . .178. . .20. . .junior -- has labored as "B"team boss for two years. . .average runner and passer, but lack of speed has been greatest shortcoming. . .capable safety on defense. . .from Festus..

CHILDRESS, DUDLEY STEPHEN -- 5-11. . .158. . .18. . . sophomore -- slightly-built youth played an alert safety for yearlings, seeing little service on the offense. . .draw favorable comment this spring. . .needs to bring along his passing, and "get bigger" to complete on varsity level. . .brilliant student, and a good future-book bet in the M.U. backfield. . .from Harrisonville.



EATON, VICTOR ROE -- 6-0. . . 190. . .20. . .junior -- biggest of the quarterback crop. . .a "hard-lucker"--had glandular fever late in freshman campaign, and missed spring practice with a back injury. . .has triple-threat talent. . .is strong long passer, and swift afoot. . .good punter. . .was tried briefly at halfback last year. . .owns size and speed to handle defensive load in the secondary. . .will be No. 2 quarterback as of Sept. 1. . .from Lafayette high in St. Joseph.

SCARDINO, ANTHONY EDWARD -- 5-9 1/2. . .169. . .20. . .junior -- already a two-stripe veteran, Tony will go into September as the Tigers' top-rated quarterback. . .should be more poised, effective in '53, after getting a favorable check-out on defense last spring. . .finished as the Big Seven's No. 2 passer last year with 52 completions in 129 tries for 781 yards. . .good ball-handler, but still needs to master the "quarterback keeper". . .is adept at on-the-run or off-balance passes. . .scored his first collegiate touchdown in final 1952 game against Kansas, and it was decisive tally in 20-19 Missouri victory. . .zoomed into headlines as a freshman with great passing effort against Oklahoma. . . off the spread formation, Tony hit 23 of 42 passes for 365 yards, surpassing Christman's single game completion and yardage records. . . a three-sport athlete at Northeast high in Kansas City.



SCHOONMAKER, JERALD LEE -- 6-1. . .189. . .19. . .junior -- dogged by injuries during first two years on squad. . .fractured ankle in "B"-team game last season. . .big and capable, has powerful throwing arm. . .inexperience is main drawback. . .lettered as outfielder with M. U. baseball team last spring. . .brother of Bob. . .from Lebanon.

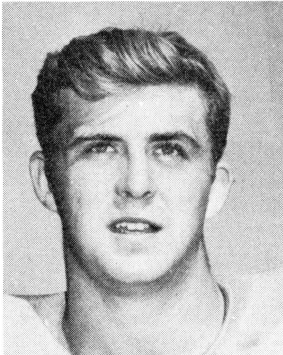
SMITH, GERRY DEAN -- 5-8. . .160. . .20. . .junior -- "B"-team quarterback last year. . .sidelined early with fractured vertebrae in Kirksville game. . .small but spunky, and a good tackler. . .from Gower.

## LEFT HALFBACKS

FISCHER, CHARLES ADAM -- 6-1. . .174. . .20. . .junior -- a "B"-teamer in '52. . .lots of natural speed, but stillgreen... .has missed spring drills each year due to track participation. . .Tigers' top sprinter for the past two years. . .from Springfield.

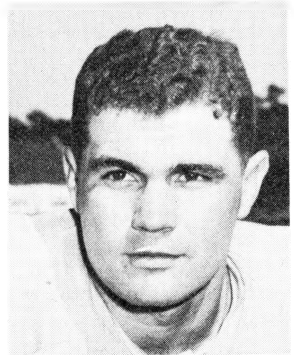
MAKIN, TOM TORTT (Buddy) -- 5-11. . .175. . .21. . .senior -- started the Kansas State game last year, fractured his collar bone, and was out for the rest of the schedule. . .fine tackler. . .his father, "Shorty" Makin, was contemporary of Coach Faurot at Missouri, and a track man. . .married. . .from Tiptonville, Tenn.

MORRELL, THOMAS EUGENE -- 6-1. . .183. . .19. . .sophomore -- used wholly as a defensive halfback with the freshmen... .keen pass defender--scored on an intercepted pass against Iowa State. . .rangy and fast. . .made good spring showing, but missed final game as result of knee injury. . .from Center high in Kansas City.



ROSE, GUY THOMAS -- 6-1 1/2. . .190. . .20. . .junior -- played defense almost exclusively last year as linebacker, except to appear in kickoff lineup whenever Missouri received. Led teammates in kickoff returns, averaging 21.3 yards on six runbacks. . .husky, tough and hard-running, Rose already has earned two varsity letters for defensive skill. . .needs only to acquire offensive finesse to rate high in the picture this year. . .from Webster Groves high.

SCHOONMAKER, ROBERT NEAL -- 5-11. . .188. . .21. . .senior -- kinky-haired co-captain of '52 Tigers as a defensive halfback. . ."Schoony" should be first-in-line for left half post, when workouts begin. . .may also be given a trial at fullback, which would complete the backfield cycle, since he quarterbacked as a sophomore. . .a hustling, all-out player who won three letters (football, basketball and baseball) last year, and yet maintained a superior academic standing. . .a senior in the school of Business and Public Administration, Bob has compiled a 3.26 scholastic average--out of a possible 4.0--through his junior year. . .treasurer of senior class. . .comes from Lebanon.





**THOMECZEK, HAROLD JOSEPH** -- 5-10 1/2 . .178. . .20. . .junior -- turned in one of the more unheralded defensive jobs in '52 secondary, though handicapped by a knee brace. . .a highly-determined competitor, and a jarring tackler. . .most outstanding feat last year was his rundown of Nebraska's Bill Thayer on opening kickoff of second half, which prevented a Husker score. . .must prove offensive ability this fall. . .from Marquette high in Alton, Ill.

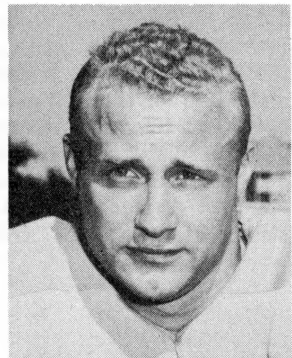
### *RIGHT HALFBACKS*

**BURSON, GERYE** -- 5-11. . .174. . .19. . .junior -- a "B"-team mainstay for two years. . .good ball-carrier and running pass threat. . .is a southpaw thrower, one of four in contention for the right half berth. . .from Mt. Vernon.

**CURLEY, H. WILLIAM** -- 6-0. . .172. . .19. . .sophomore -- slender newcomer shows promise of future stardom. . .fast, shifty runner who did well this spring. . .a fair southpaw passer. . .dependable worker. . .exceptional student. . .played end and linebacker in high school. . .from Nevada.

**FOX, JACK LEE** -- 6-0. . .176. . .21. . .junior -- a compact, hard-hitting youth who has not yet reached the heights expected of him. . .a prep standout. . .more aggressive, determined last spring. . .may be ready to find his niche on the varsity. . .best on handoffs, but a good run-or-pass threat as well. . .throws lefty. . .married. . .from Monett.

**MERRIFIELD, EDWIN JOYCE (Skimp)** -- 5-7 1/2. . .178. . .21. . .senior -- Chunky blond came out of nowhere last year to spark defensive secondary from his safety spot. . .a crisp tackler with keen knack for playing ball in the air. . .intercepted four enemy tosses in '52. . .fielded 22 punts without a miss for an average runback of 10 1/2 yards. . .intercepted deflected lateral against Nebraska, and raced 30 yards for a touchdown to break 0-0 third quarter stalemate. . .collaborated with Bill Fessler on end-zone break-up of Robertson-to-Bogue aerial in waning minutes of K. U. game to preserve Tiger's 20-19 win. . .named to all-Big Seven first team at

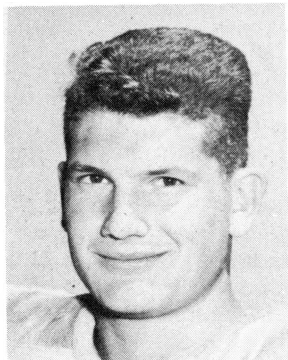


safety. . . a heady, fiery sparkplug who will be hard to displace as the No. 1 right half. . . probably will do M. U.'s conversion kicking this year. . . from Hardin.

MUSGRAVE, ROBERT IRVING -- 5-11. . . 165. . . 18. . . sophomore -- worked at quarterback for yearlings, but moved to right half this spring. . . another left-hander who owns good speed and break-away ability. . . needs to improve throwing and defense. . . rated a top-notch baseball prospect, plays the outfield. . . from Hickman high in Columbia.

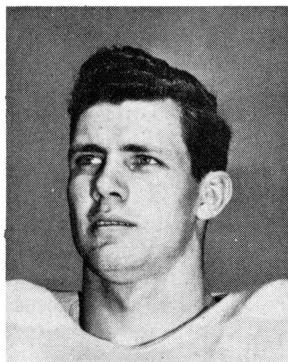
POWELL, JOHN BERT -- 5-9 1/2. . . 170. . . 19. . . sophomore -- fractured arm kept this bantam-back out of freshman competition, but he won his numeral off his performance this spring. . . one of team's fastest ball-carriers. . . fine attitude, spirit. . . could he heard from this year. . . from Southwest high in Kansas City.

### FULLBACKS



BAUMAN, ROBERT LEO -- 6-0. . . 190. . . 20. . . junior -- most impressive, back in spring football togs. . . saw varsity service as a freshman, but did not letter until last year. . . linebacked almost all the way in '52, but average 4 1/2 yards-per-whack on six ball-carrying thrusts. . . really pulled out the throttle in spring ball. . . showed excellent all-around stuff, and will be No. 1 entry in September. . . from Ste. Genevieve.

DETRING, RAYMOND STEWART -- 6-3. . . 192. . . 21. . . sophomore -- rawboned recruit is labeled a "can't miss" prospect for the varsity this year. . . exhibited great power and speed for the freshmen. . . a standout in both wins over Iowa State and Kansas last year. . . may be slow starter after missing spring practice. . . was hospitalized by a six-weeks' siege of yellow jaundice. . . has a strong kickoff toe. . . from Farmington.



MILNE, JAMES LAVERNE -- 6-0. . .182. . .21. . .senior -- shuttling between "B"-team and varsity squad last season, this well-knit back never showed enough consistency to win the coaches' confidence . . .good runner who throws the running pass easily. . .is strong defensively. . .starred in spring Varsity-Alumni game, scoring twice. . . from Grandview.

## TIGERS' 1952 ALL-OPPONENT TEAM

<u>Offense</u>	<u>Pos.</u>	<u>Defense</u>
Lloyd Colteryahn, Maryland	E	Dennis Emanuel, Nebraska
Oliver Spencer, Kansas	T	Bill Forester, S. M. U.
Don Boll, Nebraska	G	Bill Maletzky, Maryland
Tom Catlin, Oklahoma	C	Tom Catlin, Oklahoma
J. D. Roberts, Oklahoma	G	Bob Hantla, Kansas
Dick Modzelewski, Maryland	T	Jerry Minnick, Nebraska
Paul Leoni, Kansas	E	John Alderton, Maryland
Jack Scarbath, Maryland	QB	Veryl Switzer, Kansas State
Don Johnson, California	HB	Val Joe Walker, S. M. U.
Billy Vessels, Oklahoma	HB	Larry Grigg, Oklahoma
John Olszewski, California	FB	Elmer Stout, Okla. A & M

## PRONUNCIATION GUIDE

Anastas--- (uh-NASS-tiss)	Karakas----- (kuh-RACK-as)
Bauman--- (au same as ow in owl)	Kroenke----- (KRENK-ee)
Brase ---- (BRAH-zee)	Milne----- (MILL-nee)
Burnine--- (BURR-NINE)	Morrell----- (more-RELL)
Corpeny -- (CORE-penny)	Piskulich----- (pis-KOO-litch)
Detring --- (DEE-tring)	Salmons----- (SAL-munnz)
Ekern ---- (Eck-urn)	Schoonmaker --- (SKOON-MAKER)
Follin ---- (FAL-inn)	Shiveley ----- (SHIVE-lee)
Fuchs ---- (FEW-sh-h)	Stefanides----- (steh-FAN-id-deez)
Gillham -- (GILL-um)	Thomeczek----- (TOM-eh-check)

# UNIVERSITY OF MISSOURI

## LOCATION

The University of Missouri is located in Columbia which is near the geographic center of the state and 31 miles north of Jefferson City, the state capitol.

## THE PRESIDENT

Dr. Frederick A. Middlebush, president of the University of Missouri, is widely known as an educator, administrator, and authority on political science and law. He joined the faculty in 1922, and became president in 1935. During his tenure here, Dr. Middlebush has seen the enrollment grow from less than 3,500 to more than 15,000 students-- and new campus buildings have kept pace of that expansion.

## WHEN FOUNDED

In 1839, the Geyer Act created the University of Missouri. Construction of University buildings began with the laying of the cornerstone for Academic Hall on July 4, 1840, and formal instruction in the University dates from April 14, 1841. The University of Missouri is the oldest state university west of the Mississippi.

## EARLY HISTORY

After fighting a constant struggle for survival, the University suffered utter disruption during the Civil War. During this period, the Federal Militia seized Academic Hall for their headquarters, and it wasn't until 1865 that the University was officially re-opened. Women students were cautiously introduced into the student body in 1868 under rigid rules, and were officially admitted to the student body in 1870.

## NUMBER OF SCHOOLS OR BRANCHES

The University of Missouri numbers eleven schools and colleges which are governed by a Board of Curators, a nine-member group appointed by the Governor and approved by the Legislature. The University includes the College of Arts and Science, the School of Business Administration, the College of Engineering, the Graduate School, the College of Education, the School of Law, the School of Medicine, the School of Journalism, the College of Agriculture, the School of Veterinary Medicine, and the School of Mines and Metallurgy at Rolla, Mo. The School of Journalism, founded in 1908, was at that time the first of its kind in the world. Its graduates are said to be Missouri's second greatest export.

## NUMBER OF STUDENTS IN ATTENDANCE

Enrollment figures for the Fall semester of 1953 should show between 7,500 and 8,500 students in attendance. The peak enrollment of 14,071 students was reached during the Fall semester of 1947. The first commencement at the University of Missouri was formalized on November 28, 1843, with two graduates. Since that time more than 130,000 students have enrolled, and more than 56,000 have received degrees.

# OFFICIALS FOR MIZZOU'S 1953 GAMES

	<u>Referee</u>	<u>Umpire</u>	<u>Linesman</u>	<u>Judge</u>
Maryland	George Watson (North Carolina)	Grady Skillern (Oklahoma)	Bee Harper (So. Carolina)	Louis House (Wm. Jewell)
Purdue	Louis House (Wm. Jewell)	M. G. Volz (Nebraska)	George Bourrette (Mo. Wesleyan)	Bat Shunatona (Oklahoma)
Colorado	Cliff Ogden (Wichita)	M. G. Volz (Nebraska)	Hugh Leonard (Phillips)	Don Des Combes (Warrensburg)
S. M. U.	Ronald Gibbs (St. Thomas)	Bailey McElreath	Bo McAlister (Okla. A & M)	Lee Rogers
Iowa State	Ronald Gibbs (St. Thomas)	Hugh Leonard (Phillips)	J. E. Schlupp (Colorado)	Jim Willcoxon (Colorado)
Nebraska	Louis House (Wm. Jewell)	Bud Knox (Des Moines)	Carl Kopelk (Emporia)	Ed Dubie (Tulsa)
Indiana	A. T. Skover (Detroit)	DeWitt Gibson, Jr. (Northwestern)	Archie Morrow (River Falls Tchrs)	Norman Dawson & Ralph Martin
Oklahoma	Ronald Gibbs (St. Thomas)	Bud Knox (Des Moines)	Clay VanReen (Bradley)	W. P. Astle (Emporia State)
Kansas State	Cliff Ogden (Wichita)	Grady Skillern (Oklahoma)	Clay VanReen (Bradley)	Herm Rohrig (Nebraska)
Kansas	Cliff Ogden (Wichita)	M. G. Volz (Nebraska)	Roy Brown (Warrensburg)	Ed Dubie (Tulsa)

# UNIVERSITY OF MISSOURI

1953 FOOTBALL ROSTER

JER. NO.	NAME	POS.	HT.	WT.	AGE	CLASS	HOME TOWN (H.S.)	HIGH SCHOOL COACH
69	Anastas, George	G	5-11	190	20	Soph.	St. Louis (Soldan)	Woodrow Hatfield
35	*Bauman, Robert	FB	6-0	190	20	Jun.	Ste. Genevieve	Clifford Cromer
75	(x)Boyd, Julian	T	6-0	206	22	Sen.	Caruthersville	E. J. Beopple
11	Brase, Jack	QB	5-10	178	20	Jun.	Festus	Murrell Godwin
54	*Brown, Loyd	C	6-1	201	21	Sen.	North Kansas City	Clyde Cooper
72	*Bull, Charles	T	6-1	198	20	Jun.	Maplewood-Rch. Hgts.	Norville Wallach
80	Burnine, Harold	E	6-2	182	21	Soph.	Richmond	Charles Hamann
31	Burson, Gerye	HB	5-11	174	19	Jun.	Mt. Vernon	John Grist
17	Childress, Dudley	QB	5-11	158	18	Soph.	Harrisonville	Jay Anderson
84	*Corpeny, Elmer (Pete)	E	6-1	181	20	Jun.	Kansas City (SE)	Cecil Patterson
43	Curley, William	HB	6-0	172	19	Soph.	Nevada	Gene Rimmer
34	Detring, Ray	FB	6-3	192	21	Soph.	Farmington	Troy Lingle
53	Douglass, James	C	5-11	182	20	Jun.	St. Louis (Norm'dy)	Art Shipherd
12	*Eaton, Vic	QB	6-0	190	20	Jun.	St. Joseph	Dean George
83	Ekern, Herman (Pete)	E	6-3	194	20	Jun.	Mexico	Payne Muir
33	Finder, John	FB	6-0	181	19	Soph	Kirkwood	William Lenich
47	Fischer, Charles (Adam)	HB	6-1	174	20	Jun.	Springfield	Bill Thomas
64	*Follin, Ted	G	6-3	202	21	Sen.	St. Louis (Central)	Bill Webber
45	Fox, Jack	HB	6-0	176	21	Jun.	Monett	K. J. Richardson
71	Gentry, Charles	T	6-2	210	21	Jun.	Kansas City (Paseo)	Nelson Dwight
50	Gillham, Richard	G	5-11	178	21	Sen.	Springfield	Roy Robertson
68	Gooch, Robert	G	6-0	191	18	Soph.	Marceline	Jack Wells
77	Hachman, Glenn	T	6-0	218	19	Soph.	Roxana, Ill.	Earl McLane
55	Hall, Charles	G	6-1	190	19	Soph.	Mexico	Loyd Brinkman
86	*Hanners, Donald	E	6-1	188	23	Sen.	St. Louis (Norm'dy)	Art Shipherd
87	*Hurley, John	E	6-2	196	19	Jun.	Jefferson City	Arthur Allen
85	*Jennings, James (Ike)	E	6-3	195	19	Jun.	Crystal City	Arvel Popp

51	Karakas, Tony	C	6-0	180	21	Soph.	St. Louis (Soldan)	Woodrow Hatfield
41	Makin, Tom (Buddy)	HB	5-11	175	21	Sen.	Tiptonville, Tenn.	Ellis Truett
60	*McMichael, Raymond	G	6-1	193	20	Jun.	Gower	Bob Johnson
22	*Merrifield, Edwin	HB	5-7½	178	21	Sen.	Hardin	Bob Taylor
32	Milne, James	HB	6-0	182	21	Sen.	Grandview	Marvin Blaine
20	Morrell, Thomas	HB	6-1	183	19	Soph.	Kansas City (Center)	Jim Kuechler
40	Musgrave, Robert	HB	5-11	165	18	Soph.	Columbia	Bob Roark
74	Pendleton, Charles	T	6-1	198	20	Soph.	St. Louis (Central)	Bill Webber
66	*Phillips, Charles	T	6-4	207	21	Sen.	Sedalia	Ralph Dow
88	(y)Piskulich, John	E	6-1	187	20	Jun.	St. Louis (Beau'nt)	Tad Close
70	Portney, Alvin	T	6-1½	196	19	Soph.	University City	Clarence Muhl
46	Powell, John	HB	5-9½	170	19	Soph.	Kansas City (SW)	Louis House
61	*Roberts, Terry	G	6-2	195	20	Jun.	Carthage	K. E. Baker, Jr.
78	Robertson, Howard	T	6-2	207	19	Soph.	Granite City, Ill.	Byron Bozarth
30	*Rose, Guy	HB	6-1½	190	20	Jun.	Webster Groves	Ray Moss
63	Rudd, Eugene	G	5-11	196	21	Soph.	Sikeston	Kenny Knox
79	Rury, William	T	6-1	208	18	Soph.	Carbondale, Ill.	Myron O'Hara
73	Salmons, Ronald	T	6-3	203	20	Jun.	St. Joseph	John Gibson
89	Sawyers, James	E	6-3	195	19	Soph.	Maryville	Pete Younger
10	*Scardino, Anthony	QB	5-9½	169	20	Jun.	Kansas City (NE)	E. A. Markey
15	Schoonmaker, Jerald	QB	6-1	189	19	Jun.	Lebanon	Bob Coulter
16	*Schoonmaker, Robert	HB	5-11	188	21	Sen.	Lebanon	Bob Coulter
62	Shiveley, J. W. II	G	5-10	192	20	Jun.	Odessa	Ernie Piper
21	Smith, Gerry	QB	5-8	160	20	Jun.	Gower	Bob Johnson
67	Smith, Max	G	5-11	218	19	Soph.	Boonville	Ralph King
52	*Stefanides, V. Norden	C	6-1	192	22	Jun.	Cabool	George Ring
82	(y)Stein, Mark	E	6-½	175	20	Jun.	Kansas City (SW)	Louis House
65	Swetnam, Wayne	G	6-0	192	21	Sen.	North Kansas City	Clyde Cooper
90	Tanner, Ned	E	6-2	182	21	Sen.	Sikeston	Kenny Knox
76	Thomas, Melvin	T	6-4	226	19	Soph.	East St. Louis, Ill.	Wirt Downing
23	*Thomeczek, Harold	HB	5-10½	178	20	Jun.	Alton, Ill.	Joseph Stephan
81	*Willson, John	E	6-1	183	22	Sen.	Kansas City (East)	Roy Brown

xDenotes 1950 letterman

yDenotes 1951 letterman

\*Denotes 1952 letterman

## FACTS, FIGURES ON 1953 OPPONENTS

**MARYLAND** -- LOCATION, College Park, Md.; ENROLLMENT, 7,000; FOUNDED, 1807; HEAD COACH, James M. Tatum; STADIUM, Byrd; CAPACITY, 35,000; OFFENSE, Split T; NICKNAME, Terrapins or Old Liners; COLORS, Old Gold, Black, Red and White; CONFERENCE, Atlantic Coast; SERIES RECORD, Maryland won 3, Missouri won 0; 1952 RECORD, 7 - 2; 1952 SCORES, Won from--Missouri 13-10, Auburn 13-7, Clemson 28-0, Georgia 37-0, Navy 38-7, L. S. U. 34-6 and Boston U. 34-7; Lost to--Mississippi 14-21 and Alabama 7-27.

**PURDUE** -- LOCATION, Lafayette, Ind.; ENROLLMENT, 8700; FOUNDED, 1869; HEAD COACH, Stu Holcomb; STADIUM, Ross-Ade; CAPACITY, 52,000; OFFENSE, T-formation; NICKNAME, Boiler-makers; COLORS, Old Gold and Black; CONFERENCE, Big Ten; SERIES RECORD, Purdue won 3, Missouri won 1; 1952 RECORD, 4 - 3 - 2; 1952 SCORES, Won from--Ohio State 21-14, Iowa 41-14, Illinois 40-12 and Indiana 21-16; Lost to--Notre Dame 14-26, Michigan State 7-14 and Michigan 10-21; Tied--Penn State 20-20 and Minnesota 14-14.

**COLORADO** -- LOCATION, Boulder, Colo.; ENROLLMENT, 7,000; FOUNDED, 1876; HEAD COACH, Dallas (Dal) Ward; STADIUM, Folsom Field; CAPACITY, 30,000; OFFENSE, Single Wing; NICKNAME, Golden Buffaloes or Buffs; COLORS, Silver and Gold; CONFERENCE, Big Seven; SERIES RECORD, Colorado won 4, Missouri won 12, Tied 1; 1952 RECORD, 6 - 2 - 2; 1952 SCORES, Won from--San Jose State 20-14, Arizona 34-19, Iowa State 21-12, Utah 20-14, Kansas State 34-14 and Colorado A & M 61-0; Lost to--Kansas 12-21 and Missouri 7-27; Tied--Oklahoma 21-21 and Nebraska 16-16.

**SOUTHERN METHODIST** -- LOCATION, Dallas, Tex.; ENROLLMENT, 4500; FOUNDED, 1911; HEAD COACH, Chalmer Woodard; STADIUM, Cotton Bowl; CAPACITY, 75,347; OFFENSE, T-formation; NICKNAME, Mustangs or Ponies; COLORS, Cardinal Red and Royal Blue; CONFERENCE, Southwest; SERIES RECORD, S. M. U. won 7, Missouri won 2, Tied 1; 1952 RECORD, 4 - 5 - 1; 1952 SCORES, Won from--Missouri 25-7, Rice 21-14, Texas A & M 21-13 and Arkansas 27-17; Lost to Duke 7-14, George Tech 7-20, Kansas 0-26, Texas 14-31 and T. C. U. 7-14; Tied Baylor 7-7.

**IOWA STATE** -- LOCATION, Ames, Ia.; ENROLLMENT, 7900; FOUNDED, 1858; HEAD COACH, Emmett R. (Abe) Stuber; STADIUM, Clyde Williams Field; CAPACITY, 20,000; OFFENSE, T-formation; NICKNAME, Cyclones; COLORS, Cardinal and Gold; CONFERENCE, Big Seven; SERIES RECORD, Iowa State won 14, Missouri won 25, Tied 6; 1952 RECORD, 3 - 6; 1952 SCORES, Won from--South Dakota State 57-19, Drake 55-7 and Kansas State 27-0; Lost to--Illinois 7-33, Nebraska 0-16, Kansas 0-43, Colorado 12-21, Missouri 0-19, and Oklahoma 0-41.

**NEBRASKA** -- LOCATION, Lincoln, Neb.; ENROLLMENT, 6500; FOUNDED, 1869; HEAD COACH, J. W. (Bill) Glassford; STADIUM, Memorial; CAPACITY, 38,000; OFFENSE, Single Wing; NICKNAME, Cornhuskers; COLORS, Scarlet and Cream; CONFERENCE, Big Seven; SERIES RECORD, Nebraska won 25, Missouri won 18, Tied 3; 1952 RECORD, 5 - 4 - 1; 1952 SCORES, Won from South Dakota U. 47-0, Oregon 28-13, Iowa State 16-0, Kansas State 27-14 and Kansas 14-13; Lost to--Penn State 0-10, Missouri 6-10, Minnesota 7-13 and Oklahoma 13-34; Tied--Colorado 16-16.

**INDIANA** -- LOCATION, Bloomington, Ind.; ENROLLMENT, 11,700; FOUNDED, 1820; HEAD COACH, Bernard A. Crimmins; STADIUM, Memorial; CAPACITY, 33,785; OFFENSE, T-formation; NICKNAME, Fightin' Hoosiers; COLORS, Cream and Crimson; CONFERENCE, Big Ten; SERIES RECORD, First gridiron meeting; 1952 RECORD, 2 - 7; 1952 SCORES, Won from--Iowa 20-12 and Temple 33-0; Lost to--Ohio State 13-33, Michigan 13-28, Northwestern 13-23, Pittsburgh 7-28, Michigan State 14-41, Wisconsin 14-37 and Purdue 16-21.

**OKLAHOMA** -- LOCATION, Norman, Okla.; ENROLLMENT, 7500; FOUNDED 1892; HEAD COACH, Charles (Bud) Wilkinson; STADIUM, Owen Field; CAPACITY, 55,000; OFFENSE, Split T-formation; NICKNAME, Sooners; COLORS, Red and White; CONFERENCE, Big Seven; SERIES RECORD, Oklahoma won 23, Missouri won 16, Tied 4; 1952 RECORD, 8 - 1 - 1; 1952 SCORES, Won from--Pittsburg 49-20, Texas 49-20, Kansas 42-20, Kansas State 49-6, Iowa State 41-0, Missouri 47-7, Nebraska 34-13 and Oklahoma A & M 54-7; Lost to--Notre Dame 21-27; Tied--Colorado 21-21.

**KANSAS STATE** -- LOCATION, Manhattan, Kan.; ENROLLMENT, 5000; FOUNDED, 1863; HEAD COACH, Bill Meek, STADIUM, Memorial; CAPACITY, 20,000; OFFENSE, Split T; NICKNAME, Wildcats; COLORS, Royal Purple and White; CONFERENCE, Big Seven; SERIES RECORD, Kansas State won 11, Missouri won 23, Tied 4; 1952 RECORD, 1 - 9; 1952 SCORES, Won from--Bradley 21-7; Lost to--Cincinnati 6-13, Missouri 0-26, Nebraska 14-27, Tulsa 7-26, Oklahoma 6-49, Kansas 6-26, Wyoming 7-20, Colorado 14-34 and Iowa State 0-27.

**KANSAS** -- LOCATION, Lawrence, Kan.; ENROLLMENT, 9500; FOUNDED 1866; HEAD COACH, Jules V. (Siki) Sikes; STADIUM, Memorial; CAPACITY, 38,000; OFFENSE, T-formation; NICKNAME, Jayhawks; COLORS, Crimson and Blue; CONFERENCE, Big Seven; SERIES RECORD, Kansas won 28, Missouri won 26; Tied 7; 1952 RECORD, 7 - 3; 1952 SCORES, Won from--T. C. U. 13-0, Santa Clara 21-9, Colorado 21-12, Iowa State 43-0, S. M. U. 26-0, Kansas State 26-6 and Oklahoma A & M 12-7; Lost to--Oklahoma 20-42, Nebraska 13-14 and Missouri 19-20.

# ALL-TIME SCORES AGAINST '53 OPPONENTS

YEAR	M.U.	MARY- LAND
1950*	7	20
1951	0	35
1952	10	13
Totals	17	68

Missouri won 0,  
Maryland won 3.

YEAR	M.U.	PURDUE
1895	16	6
1897	12	30
1904	0	11
1905	0	24
Totals	28	71

Missouri won 1,  
Purdue won 3.

YEAR	M.U.	COLO.
1930	0	9
1931	7	9
1934	0	0
1935	20	6
1937	6	14
1938	14	7
1939	30	0
1940	21	6
1941	21	6
1942	26	13
1946	21	0
1947	21	0
1948	27	13
1949	20	13
1950	21	19
1951	13	34
1952	27	7
Total	295	156

Missouri won 12,  
Colorado won 4,  
Tied 1.

YEAR	M.U.	S.M.U.
1926	7	7
1927	9	32
1945	10	7

(Cont. next col.)

1946	0	17
1947	19	35
1948	20	14
1949	27	28
1950	0	21
1951	0	34
1952	7	25
Total	99	220

Missouri won 2,  
S. M. U. won 7,  
Tied 1.

YEAR	M.U.	I-STATE
1896	0	12
1908	0	16
1909	6	6
1910	5	6
1911	3	6
1912	0	29
1913	21	13
1914	0	6
1915	6	14
1916	0	0
1917	0	15
1919	10	0
1920	14	2
1921	17	14
1922	6	3
1923	0	2
1924	7	0
1925	23	8
1926	7	3
1927	13	6
1928	28	19
1929	19	0
1930	14	0
1931	0	20
1932	0	0
1933	7	14
1934	0	13
1935	6	6
1936	10	0
1937	12	0
1938	13	16
1939	21	6

(Cont. next col.)

1940	30	14
1941	39	13
1942	45	6
1943	25	7
1944	21	21
1945	13	7
1946	33	13
1947	26	7
1948	49	7
1949	32	0
1950	20	20
1951	14	21
1952	19	0
Totals	<u>634</u>	<u>391</u>

Missouri won 25,  
I-State won 14,  
Tied 6.

<u>YEAR</u>	<u>M.U.</u>	<u>NEB.</u>
1892	0	6
1893	18	12
1894	18	14
1895	10	12
1896	4	8
1897	0	42
1898	6	47
1899	11	0
1900	0	12
1901	0	51
1902	0	12
1911	0	34
1912	0	7
1917	0	52
1919	5	12
1922	0	48
1923	7	7
1924	6	14
1925	9	6
1926	14	7
1927	7	6
1928	0	24
1929	7	7
1930	0	0
1931	7	10
1932	6	21
1933	0	26
1934	6	13
1935	6	19

(Cont. next col.)

1936	0	20
1937	0	7
1938	13	10
1939	27	13
1940	7	20
1941	6	0
1942	26	6
1943	54	20
1944	20	24
1945	19	0
1946	21	20
1947	47	6
1948	33	6
1949	21	20
1950	34	40
1951	35	19
1952	10	6
Totals	<u>520</u>	<u>766</u>

Missouri won 18,  
Nebraska won 25,  
Tied 3.

YEAR    M.U.    IND.  
(No previous meetings)

<u>YEAR</u>	<u>M.U.</u>	<u>OKLA.</u>
1902	22	5
1910	26	0
1911	6	14
1912	14	0
1913	20	17
1914	0	13
1915	0	24
1916	23	14
1917	7	14
1919	6	6
1920	7	28
1921	24	14
1922	14	18
1923	0	13
1924	10	0
1925	16	14
1926	7	10
1927	20	7
1928	0	14
1929	13	0
1930	0	0
1931	7	0

(Cont. next col.)

1932	14	6
1933	0	21
1934	0	31
1935	6	20
1936	21	14
1937	0	7
1938	0	21
1939	7	6
1940	0	7
1941	28	0
1942	6	6
1943	13	20
1944	21	21
1945	14	6
1946	6	27
1947	12	21
1948	7	41
1949	7	27
1950	7	41
1951	20	34
1952	7	47
Totals	438	649

Missouri won 16,  
Oklahoma won 23,  
Tied 4.

YEAR	M.U.	KANSAS STATE
1909	3	0
1914	13	3
1915	0	0
1916	6	7
1917	6	7
1919	6	6
1920	10	7
1921	5	7
1922	10	14
1923	4	2
1924	14	7
1925	3	0
1927	13	6
1928	19	6
1929	6	7
1930	13	20
1931	7	20
1932	0	25
1933	0	33

(Cont. next col.)

1934	0	29
1935	7	7
1936	7	7
1937	14	7
1938	13	21
1939	9	7
1940	24	13
1941	35	0
1942	46	2
1943	47	14
1944	33	0
1945	41	7
1946	26	0
1947	46	7
1948	49	7
1949	34	27
1950	28	7
1951	2	0
1952	26	0
Totals	624	329

Missouri won 23,  
K-State won 11,  
Tied 4.

YEAR	M.U.	K.U.
1891	8	22
1892	4	12
1893	12	4
1894	12	18
1895	10	6
1896	0	30
1897	0	16
1898	0	12
1899	6	34
1900	6	6
1901	18	12
1902	5	17
1903	0	5
1904	0	29
1905	0	24
1906	0	0
1907	0	4
1908	4	10
1909	12	6
1910	5	5
1911	3	3
1912	3	12

(Cont. next col.)

1913	3	0
1914	10	7
1915	6	8
1916	13	0
1917	3	27
1919	13	6
1920	16	7
1921	9	15
1922	9	7
1923	3	3
1924	14	0
1925	7	10
1926	15	0
1927	7	14
1928	25	6
1929	7	0
1930	0	32
1931	0	14
1932	0	7
1933	0	27
1934	0	20
1935	0	0
1936	19	3
1937	0	0
1938	13	7
1939	20	0
1940	45	20
1941	45	6
1942	42	13
1943	6	7
1944	28	0
1945	33	12
1946	19	20
1947	14	20
1948	21	7
1949	34	28
1950	20	6
1951	28	41
1952	20	19
Totals	675	706

Missouri won 26,  
Kansas won 28,  
Tied 7.

# CONFERENCE FOOTBALL CHAMPIONS

## BIG SIX

<u>Year</u>	<u>Team</u>	<u>W</u>	<u>L</u>	<u>T</u>	<u>Pct.</u>	<u>Coach</u>
1928	Nebraska	5	0	0	1.000	Ernest Bearg
1929	Nebraska	3	0	2	1.000	Dana Bible
1930	Kansas	4	1	0	.800	Bill Hargiss
1931	Nebraska	5	0	0	1.000	Dana Bible
1932	Nebraska	5	0	0	1.000	Dana Bible
1933	Nebraska	5	0	0	1.000	Dana Bible
1934	Kans. State	5	0	0	1.000	Lynn Waldorf
1935	Nebraska	4	0	1	.900*	Dana Bible
1936	Nebraska	5	0	0	1.000	Dana Bible
1937	Nebraska	3	0	2	.800	L.M. "Biff" Jones
1938	Oklahoma	5	0	0	1.000	Tom Stidham
1939	Missouri	5	0	0	1.000	Don Faurot
1940	Nebraska	5	0	0	1.000	L.M. "Biff" Jones
1941	Missouri	5	0	0	1.000	Don Faurot
1942	Missouri	4	0	1	.900	Don Faurot
1943	Oklahoma	5	0	0	1.000	Dewey Luster
1944	Oklahoma	4	0	1	.900	Dewey Luster
1945	Missouri	5	0	0	1.000	Chauncey Simpson
1946	Oklahoma	4	1	0	.800	Jim Tatum
1946	Kansas	4	1	0	.800	George Sauer
1947	Oklahoma	4	0	1	.900	Bud Wilkinson
1947	Kansas	4	0	1	.900	George Sauer

## BIG SEVEN

1948	Oklahoma	5	0	0	1.000	Bud Wilkinson
1949	Oklahoma	5	0	0	1.000	Bud Wilkinson
1950	Oklahoma	6	0	0	1.000	Bud Wilkinson
1951	Oklahoma	6	0	0	1.000	Bud Wilkinson
1952	Oklahoma	5	0	1	.916	Bud Wilkinson

\*Tie games went into the record as 1/2 game won and 1/2 game lost.

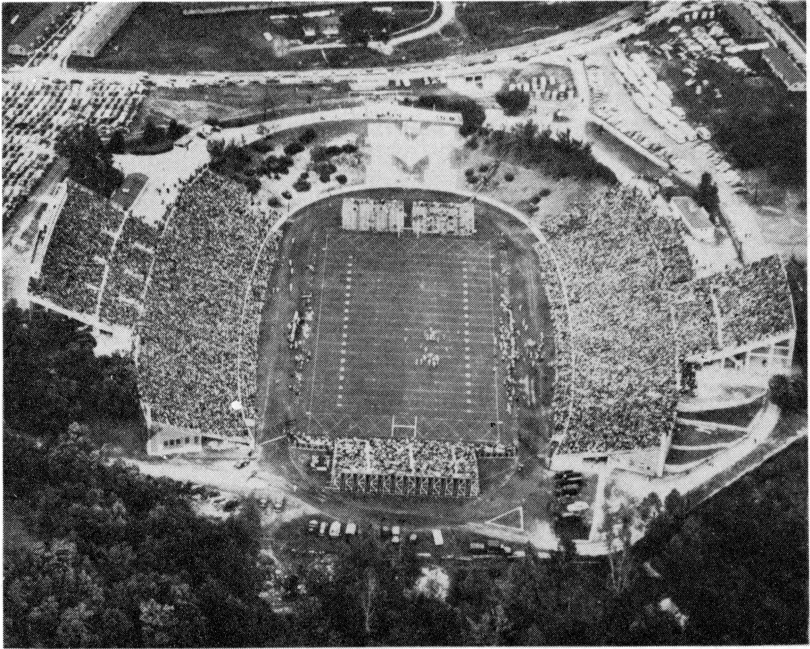
## TIGER'S 1952 GAME-BY-GAME STORY

	Rushing		Tiger Passing				Opponents' Passing			
	Tiger	Opp.	Att.	Comp.	Int.	Yds. Gain	Att.	Comp.	Int.	Yds. Gain
	Net	Net								
Maryland	62	211	24	10	2	143	12	4	2	112
California	82	411	37	10	1	128	10	3	3	48
Kansas State	335	63	14	4	1	55	18	9	1	87
S. M. U.	67	241	35	12	4	209	12	5	2	101
Okla. A & M	156	185	32	8	7	182	10	4	1	56
Iowa State	276	43	24	14	1	184	17	8	2	69
Nebraska	184	117	13	5	2	53	25	10	3	193
Colorado	368	148	7	1	1	8	12	5	1	46
Oklahoma	76	261	32	13	7	180	13	7	0	116
Kansas	260	182	11	66	1	79	24	11	2	168
<b>Totals</b>	<b>1866</b>	<b>1862</b>	<b>229</b>	<b>83</b>	<b>27</b>	<b>1221</b>	<b>153</b>	<b>66</b>	<b>17</b>	<b>996</b>

## INDIVIDUAL STATISTICS 1952

PUNTING				PUNT RETURNS				
	No.	Yds.	Aver.		No.	Yds.	Aver.	
Rowekamp, hb	1	52	52.0	Eaton, qb	2	22	11.0	
Fessler, hb	46	1765	38.4	Merrifield, qb	22	230	10.5	
Eaton, qb	2	50	25.0	Hook, hb	9	84	9.3	
<b>Totals</b>	<b>49</b>	<b>1867</b>	<b>38.1</b>	Makin, hb	1	8	8.0	
				Rose, hb	3	15	5.0	
				Thomeczek	5	16	3.2	
PASS RECEIVING				RUSHING				
	Caught	Yards			Tries	Net		
Jennings, e	14	219		Hook, hb	141	741		
Rowekamp, hb (3TD)	11	189		Rowekamp, hb	113	607		
Fessler, hb (1TD)	11	146		Carras, fb	87	359		
Carras, fb	7	106		Scardino, qb	70	41		
Hanners, e	9	100		Eaton, qb	14	32		
Stein, e	2	100		Bauman, fb	6	27		
Udell, e	7	67		Rose, hb	6	22		
Willson, e (1TD)	5	62		Fox, hb	6	220		
Hook, hb	5	49		Makin, hb	7	20		
Makin, hb (1TD)	3	46		Fessler, hb	4	7		
Rose, hb	1	34		Thomeczek, hb	1	5		
Corpeny, e	1	29		Schoonmaker, hb	2	-15		
Bauman, fb	2	16		<b>Totals</b>	<b>547</b>	<b>1866</b>		
Fox, hb	4	16						
Hurley, e	1	12						
<b>Totals</b>	<b>83</b>	<b>1221</b>						
PASSING				INTERCEPTION RETURNS				
	Att.	Comp.	Int.	Yds.		No.	Yds.	Aver.
Scardino, qb (3TD)	129	52	11	781	Roberts, g	2	43	21.3
Hook, hb (2TD)	85	27	12	410	Schoonmaker, hb	3	42	14.0
Carras, fb (1TD)	5	3	1	19	Merrifield, qb	4	35	8.8
Eaton, qb	8	1	2	11	Hurley, e	2	14	7.0
Fessler, hb	1	0	0	0	Androlewicz, fb	1	7	7.0
Fox, hb	1	0	1	0	Rose, hb	1	3	3.0
<b>Totals</b>	<b>229</b>	<b>83</b>	<b>27</b>	<b>1221</b>	Thomeczek, hb	3	7	2.3
					Bauman, fb	1	0	.0
					<b>Totals</b>	<b>15</b>	<b>151</b>	<b>10.1</b>
SCORING				KICKOFF RETURNS				
	TD's	PATs	FG	TP		No.	Yds.	Aver.
Rowekamp, hb	7			42	Rose, hb	6	128	21.3
Hook, hb	5			30	Hook, hb	2	42	21.0
Fuchs, t		15-19	2-4	21	Rowekamp, hb	7	143	20.4
Fessler, hb	1			6	Carras, fb	3	62	20.7
Makin, hb	1			6	Eaton, qb	9	168	18.7
Willson, e	1			6	Bauman, fb	1	9	9.0
Schoonmaker, hb	1			6	Lordo, g	1	0	.0
Eaton, qb	1			6				
Merrifield, qb	1	0-1		6				
Carras, fb	1			6				
Scardino, qb	1			6				
<b>Totals</b>	<b>21</b>	<b>15-20</b>	<b>2-4</b>	<b>147</b>				

# HOME OF THE MISSOURI TIGERS



## 1952 TEAM STANDING

<u>Conference Games</u>	<u>Won</u>	<u>Lost</u>	<u>Tied</u>	<u>Pct.</u>	<u>All Games</u>	<u>Won</u>	<u>Lost</u>	<u>Tied</u>	<u>Pct.</u>
Oklahoma	5	0	1	.916	Oklahoma	8	1	1	.888
MISSOURI	5	1	0	.833	Colorado	6	2	2	.750
Nebraska	3	2	1	.583	Kansas	7	3	0	.700
Kansas	3	3	0	.500	Nebraska	5	4	1	.555
Colorado	2	2	2	.500	MISSOURI	5	5	0	.500
Iowa State	1	5	0	.166	Iowa State	3	6	0	.333
Kansas State	0	6	0	.000	Kansas State	1	9	0	.100

# MISSOURI'S ALL-CONFERENCE SELECTIONS

## BIG SIX & BIG SEVEN

1928-1952

- 1928--Miller Brown, end; Bob Mehrle, halfback.  
1929--Keith Hursley, tackle; John Waldorf, halfback; Raymond Smith, center; Paul Brayton, guard.  
1931--Charles Schiele, end.  
1932--Charles Schiele, end.  
1935--Clair Houston, fullback.  
1936--Huston Betty, center.  
1937--Maurice Kirk, guard.  
1938--Paul Christman, halfback; Kenneth Haas, tackle.  
1939--Paul Christman,\* halfback; Kenneth Haas, tackle; Roland Orf, end; Charles Moser, center; Robert Waldorf, guard.  
1940--Paul Christman,\* halfback; Darold Jenkins, center.  
1941--Harry Ice, halfback; Darold Jenkins,\* center; Bob Jeffries, guard; Robert Steuber, halfback; Norville Wallach, tackle; Don Reece, fullback.  
1942--Robert Steuber,\* halfback.  
1943--Alfred Anderson, tackle; Jack Morton, end; Don Reece, fullback.  
1944--Paul Collins, quarterback; Bill Dellastatious, halfback; Jim Kekeris, tackle.  
1945--Jim Kekeris, tackle; Bob Hopkins, halfback; Leonard Brown, quarterback; Roland Oakes, end; Ralph Stewart, center; Bob Eigelberger, guard.  
1946--Jim Kekeris, tackle; Loyd Brinkman, halfback; Ralph Stewart, center; Roland Oakes, end.  
\*\*1947--Harold Entsminger, quarterback; Chester Fritz, tackle; Mel Sheehan, end.  
1948--Harold Entsminger, quarterback; Chester Fritz, tackle; Mel Sheehan, end; Bob Fuchs, center.  
1949--Dick Braznell, halfback.  
1951--Junior Wren, halfback; William Fuchs, center.  
1952--Jack Lordo, guard; Ed Merrifield, halfback.

\* All-American

\*\*Big Six conference became Big Seven

# MISSOURI'S ALL-TIME FOOTBALL RECORDS

## INDIVIDUAL RECORDS

**MOST POINTS COLLEGE CAREER--Bob Steuber--222 points (1940-42)**

1940 5 TD's 4 PAT's 34 Points

1941 9 TD's 13 PAT's 67 Points

1942 18 TD's 13 PAT's 121 Points

**MOST POINTS ONE SEASON--Bob Steuber--121 (1942)**

**MOST POINTS ONE GAME--Bob Steuber--20 (Iowa State, 1942)**

3 TD-s 2 PAT's

**MOST TOUCHDOWNS COLLEGE CAREER--Bob Steuber--32 (1940-42)**

**MOST TOUCHDOWNS ONE SEASON--Bob Steuber--18 (1942)**

**MOST TOUCHDOWNS ONE GAME--**

3--Paul Christman (Colorado 1939)

3--Harry Ice (Iowa State 1940)

3--Maurice Wade (Oklahoma 1941)

3--Bob Steuber (St. Louis 1942)

3--Bob Steuber (Iowa State 1942)

3--Bill Dellastatious (Iowa State 1943)

3--Bill Dellastatious (Minnesota 1944)

3--Paul Collins (Oklahoma 1944)

3--Phil Klein (Ohio State, 1949)

**MOST CONVERSIONS COLLEGE CAREER--Bob Dawson--59 (1947-49)**

3 made in 'Gator Bowl, Jan. 1, 1949.

22 consecutive conversions--from '47 Colorado game through '48 Colorado game.

**MOST CONVERSIONS ONE SEASON--Bob Dawson--41 (1948)**

**MOST CONVERSIONS ONE GAME--Bob Dawson**

7 for 7--(Iowa State 1948)

7 for 7--(Kansas State 1948)

(Made on consecutive Saturdays)

**MOST RUSHING YARDS COLLEGE CAREER --**

Bob Steuber--2004 yards (1940-42)

1940 10 carries for 51

1941 113 carries for 855

1942 149 carries for 1098

(6.9 yards average--college career)

**MOST RUSHING YARDS ONE SEASON--Bob Steuber--1098 yards (1942)**

**MOST RUSHING YARDS ONE GAME--Harry Ice--218 (Kansas 1941)**

11 tries

**MOST PASSES COMPLETED COLLEGE CAREER--Paul Christman--**

195 for 426 and 3056 (1938-40)

1938 61 for 142 and 1087 yards

1939 64 for 134 and 774 yards

1940 70 for 150 and 1195 yards

**MOST PASSES COMPLETED ONE SEASON--**Paul Christman--70 for  
 150 and 1195 yards (1940)  
**MOST PASSES COMPLETED ONE GAME--**Tony Scardino--23 for 42  
 and 365 yards (Oklahoma 1951)  
**MOST TOUCHDOWN PASSES THROWN COLLEGE CAREER--**  
 25--Paul Christman (1938-40)  
**MOST TOUCHDOWN PASSES THROWN ONE SEASON--**  
 13--Paul Christman (1940)  
**MOST TOUCHDOWN PASSES THROWN ONE GAME--**  
 3--Paul Christman (Nebraska 1939)  
 3--Paul Christman (St. Louis 1940)  
 3--Paul Christman (Kansas State 1940)  
**MOST PASSES CAUGHT COLLEGE CAREER--**74--Gene Ackermann  
 (1948-50)  
**MOST PASSES CAUGHT ONE SEASON--**42--Gene Ackermann (1949)  
**MOST PASSES CAUGHT ONE GAME--**9--Gene Ackermann (Colorado  
 1949) --9--Junior Wren (Oklahoma 1951)  
**MOST PASSING YARDAGE BY A RECEIVER COLLEGE CAREER--**  
 1028--Gene Ackermann (1948-50)  
 1948 -- 1 for 7 yards  
 1949 -- 42 for 621 yards  
 1950 -- 31 for 400 yards  
**MOST PASSING YARDAGE BY A RECEIVER ONE SEASON--**  
 621--Gene Ackermann (1949)  
**MOST PASSING YARDAGE BY A RECEIVER ONE GAME--**  
 160--Junior Wren (Oklahoma 1951)  
**MOST TOTAL YARDS (RUSH AND PASS) COLLEGE CAREER--**  
 4133--Paul Christman (1938-40)  
**MOST TOTAL YARDS (RUSH AND PASS) ONE SEASON--**  
 1487--Paul Christman (1938)  
**MOST TOTAL YARDS (RUSH AND PASS) ONE GAME--**Tony Scardino  
 359--(51 plays)(Oklahoma 1951)  
**LONGEST RUSH FROM SCRIMMAGE--**90 yards for TD--Harry Ice  
 (Iowa State 1941)  
**LONGEST PASS COMPLETION--**77 yards (catch and run) Steuber to  
 Bert Ekern (Iowa State 1942)  
**LONGEST PUNT RUNBACK--**82 yards--Dick Braznell (Ohio State 1948)  
**LONGEST RUNBACK OF FORWARD INTERCEPTION--**  
 95 yards for TD--Loyd Brinkman (St. Louis 1946)  
**LONGEST RUNBACK OF LATERAL INTERCEPTION--**  
 77 yards for TD--Don Greenwood (Iowa State 1940)  
**LONGEST KICKOFF RETURN--**100 yards--Russell Dills (Kansas 1928)  
**LONGEST PUNT--**72 yards--(Bob Faurot Oklahoma 1937)  
**LONGEST FIELD GOAL FROM SCRIMMAGE--**49 yards--Al Lincoln  
 (Kansas 1922)  
**BEST PUNTING AVERAGE ONE GAME--**48.3 yards--Harry Ice--  
 (Fordham 1942)

## MISSOURI TEAM RECORDS

(Since 1928)

- MOST POINTS ONE GAME--60 (St. Louis 1948) 60 (Centre 1928)  
MOST POINTS ONE SEASON--331 for 11 games in 1948  
MOST OPPONENT'S POINTS ONE GAME--65 (Texas 1932)  
54 (Ohio State 1944)  
LEAST POINTS ONE SEASON--25 (1934 for 9 games)  
LEAST OPPONENT'S POINTS ONE SEASON--28 (1929 for 8 games)  
GREATEST WINNING MARGIN--60-0 (Centre 1928)  
GREATEST LOSING MARGIN--65-0 (Texas 1932)  
MOST FIRST DOWNS ONE SEASON--194 (1949 for 11 games)  
MOST FIRST DOWNS ONE GAME--31 (1949 Kansas game)  
MOST OPPONENT'S FIRST DOWNS--25 (1950 S.M.U. game)  
LEAST MISSOURI FIRST DOWNS--4 (Ohio State 1943)  
4 (Minnesota 1945)  
LEAST OPPONENT'S FIRST DOWNS--1 (Colorado 1946)  
MOST RUSHING YARDS ONE SEASON--3230 (1942 for 12 games)  
MOST RUSHING YARDS ONE GAME--466 (1947 K-State game)  
MOST OPPONENT'S RUSHING YARDS ONE GAME--457 (Iowa Sea-  
hawks 1944)  
LEAST OPPONENT'S RUSHING YARDS ONE GAME--10 (K-State  
1942)  
LEAST MISSOURI RUSHING YARDS ONE GAME--12 (Iowa Seahawks  
1944 and Oklahoma 1951)  
MOST PASSING YARDS ONE SEASON--1762 (1951)  
MOST PASSES COMPLETED ONE GAME--26 (of 50 passes thrown  
for 406 yards)(Oklahoma 1951)  
MOST TOTAL YARDS (RUSH AND PASS) ONE SEASON--  
4272 (1942, 12 games)  
(3230R and 1042P)  
MOST TOTAL YARDS (RUSH AND PASS) ONE GAME--  
665 (Kansas 1949)  
(465R and 200P)  
MOST PASSES THROWN ONE SEASON--284 (1951)  
MOST PASSES THROWN ONE GAME--50 (Oklahoma 1951)  
MOST CONSECUTIVE GAMES WON (all-time)--9 (1909-10)  
MOST CONSECUTIVE GAMES WON (Faurot era)--8 (1941)  
MOST CONSECUTIVE GAMES LOST--  
9--(From 1931 St. Louis game thru 1932 Northwestern game)  
9--(From 1932 St. Louis game thru 1933 St. Louis game)  
9--(From 1933 K-State game thru 1934 Chicago game)  
MOST OFFENSIVE PLAYS ONE GAME--105 (Kansas 1949)  
MOST FUMBLES ONE GAME--10 (1941 Colorado game)--Recovered 6  
MOST FUMBLES LOST ONE GAME--7 out of 7 (Kansas 1949)

## MISCELLANEOUS

(Since 1928)

- GREATEST WINNING MARGIN NON-CONFERENCE--  
60-0 (Centre 1928)
- GREATEST WINNING MARGIN CONFERENCE--46-2 (K-State 1942)
- WORST DEFEAT NON-CONFERENCE--65-0 (Texas 1932)
- WORST DEFEAT CONFERENCE--47-7 (Oklahoma 1952)
- LONGEST TOUCHDOWN RUN--90 yards--Harry Ice (Iowa State 1941)
- MOST GAMES MISSOURI HELD SCORELESS ONE SEASON--  
6 (1930 and 1934)
- MOST GAMES OPPONENT HELD SCORELESS ONE SEASON  
5 (1929 and 1941)
- MOST PASS INTERCEPTIONS ONE SEASON--28 (1941)
- MOST PASS INTERCEPTIONS BY OPPONENT ONE GAME--  
7 (Kansas State 1951) (Okla. A & M 1952) (Oklahoma 1952)
- MOST PASS INTERCEPTIONS BY OPPONENTS ONE SEASON--  
30 (1951)
- MOST PASS INTERCEPTIONS BY MISSOURI ONE GAME--  
8 (Iowa State 1946)
- MOST YARDS LOST BY PENALTIES ONE GAME--155 (K-State 1947)
- LEAST YARDS LOST BY PENALTIES ONE GAME-0 (Oklahoma 1943)
- LARGEST HOME CROWD--37,152 (Oklahoma 1949)
- LARGEST AWAY CROWDS--73,000 (Fordham--Sugar Bowl, 1942)  
66,510 (Ohio State 1949)

**FORMER TIGER PLAYERS  
IN PROFESSIONAL FOOTBALL**

*(Since 1920)*

Bacchus, Carl..... End - 1927 Cleveland; 1928 Detroit  
Blumer, Herbert..... Tackle - 1925-33 Chicago Cardinals  
Carpenter, John..... Tackle - 1947-49 Buffalo Bills; 1949 San Francisco 49ers  
Carras, Nick..... Halfback - 1953 Washington Redskins  
Christman, Paul..... Back - 1945-49 Chicago Cardinals; 1950 Green Bay Packers  
Collins, Paul..... Back - 1945 Chicago Cardinals  
Gladden, J. Mack.... End - 1934 Chicago Gunners  
Greenwood, Don..... Back - 1945 Cleveland Rams; 1946-47 Cleveland Browns  
Jean, Walter..... Guard - 1922-23 Akron; 1924 Milwaukee; 1925-26 Green Bay Packers; 1927 Pottsville  
Kekeris, James..... Tackle— 1947 Philadelphia Eagles; 1948 Green Bay Packers  
McGill, Leonard.... Guard - 1931-32 Philadelphia; 1933 Chicago Cardinals; 1934 St Louis  
Morton, James..... End - 1945 Chicago Bears; 1946 Los Angeles Dons; 1947 Buffalo  
Pepper, Eugene..... Guard - 1950-52 Washington Redskins  
Quirk, Edward..... Back - 1948-51 Washington Redskins  
Rouse, Stillman..... End - 1940 Detroit Lions  
Rowekamp, Bill..... End - 1953 Edmonton Eskimos  
Shurnas, Marshall... End - 1947 Cleveland Browns  
Smith, Ray..... Center - 1933 Philadelphia  
Steuber, Robert..... Back - 1943 Chicago Bears; 1946 Cleveland Browns; 1947 Los Angeles Dons; 1948 Buffalo  
Stewart, Ralph..... Center - 1947-48 New York Yankees; 1948 Baltimore Bullets  
Travis, J. Edward... Tackle - 1921 Rock Island; 1923 St. Louis  
Van Dyne, Charles... Tackle - 1925 Buffalo  
Volz, Wilbur..... Back - 1949 Buffalo

# LEADING TIGER SCORERS

(Since 1928)

		TD'S	PATs	Total Points
1928	Robert Mehrle	5		30
1929	Russell Dills	4	2	26
1930	John Van Dyne	2	2	14
1931	George Stuber	3	0	18
1932	Charles Schiele	2	0	12
1933	Sidney Johnson	3	0	18
1934	Harold Bourne	2	1	13
1935	Al Londe & Henry Mahley	3 3	0 0	18 18
1936	Jack Frye	4	9	36*
1937	Henry Mahley	1	2	8
1938	Paul Christman	8	0	48
1939	Paul Christman	7	0	42
1940	Harry Ice	7	0	42
1941	Robert Steuber	9	13	67
1942	Robert Steuber	18	13	121
1943	Bill Dellastatious & Don Reece	6 6	0 0	36 36
1944	Paul Collins	10	0	60
1945	Loyd Brinkman & Robert Hopkins	5 5	0 0	30 30
1946	Howard Bonnet & Loyd Brinkman	5 5	0 0	30 30
1947	Nick Carras	5	0	30
1948	Harold Entsminger	9	0	54
1949	John Glorioso	8	29	77
1950	Ed Stephens	9	0	54
1951	James Hook	6	0	36
1952	Bill Rowekamp	7	0	42

\* One field goal included in scoring total

## EAST-WEST SHRINE GAME PARTICIPANTS

Christman, Paul	QB	1941
Fitzgerald, Mike	G	1943
Frye, Jack	QB	1937
Kadlec, John	G	1951
Kekeris, Jim	T	1945-47
Kirk, Maurice	G	1938
Reece, Don	FB	1943
Rowekamp, Bill	E	1953
Stephens, Ed	HB	1951
Steuber, Bob	HB	1943
Waldorf, John	HB	1930

## A BRIEF HISTORY OF FOOTBALL AT MISSOURI

Football at the University of Missouri traces its origin to the year 1890, when a volunteer squad played a total of three games.

Coach of this pioneer team was Dr. Austin L. McRae, an assistant physics professor who thus became first in a chain of twenty-three head football coaches at Mizzou. The following season, Missouri and Kansas staged their first gridiron meeting in a continuous series that is the oldest collegiate rivalry west of the Mississippi.

The sport had become pretty well established at Missouri in 1896 when an enterprising group of Gold and Black gridders put it temporarily in ill repute. This was the famed "lost team", which took an extended trip into Texas and Mexico, playing a series of exhibition games without the University's knowledge or consent. Returning to the campus, the players were suspended from school, a punishment later revoked, and the coach was fired.

The year 1909 brought Missouri its first--and only--unbeaten football season. Coach Bill Roper's stalwarts won seven games, being tied only by Ames, 6-6. This Mizzou squad, captained by Carl L. "Curly" Ristine, listed such stars as Ted Hackney, place-kicking wizard, and guard Frank Thacher.

Two years later, another "first" was the construction of concrete bleachers on Rollins Field--site of the Tiger's home football games. The new structure was a distinct innovation, a departure from the usual wooden seats, and is still in limited use today.

Grid squads during the next decade were under the highly capable tutelage of C. L. "Chet" Brewer, later to become athletic director, and Henry F. Schulte. This era spawned such hardy individual performers as Anton Stankowski, gritty quarterback, "Chuck" Lewis, possibly the greatest Tiger back of all-time, and Paul Hamilton.

Standout players were numerous at the turn of the "twenties", too. Foremost perhaps were tackles Herb Blumer, Herb Bunker and Charles Van Dyne--backs like Al Lincoln and Art Bond, just to name a few. Aside from their high-caliber performance on the field, Blumer, Bunker and Bond--all captains in these years--gave the Tigers leadership that was unique. All three were Phi Beta Kappa students, with Bond a Rhodes scholar.

Lincoln still has a place in Missouri's record books, for he kicked a tremendous 49-yard field goal to beat Kansas, 9-7, in 1922.

Coach Gwinn Henry arrived on the scene in 1923, starting an eight-year reign. His '24 team promptly pinned a 3-0 defeat on Chicago, Western Conference champions, went on to win the Missouri Valley championship, and was chosen to play Southern California in a late-season game at Los Angeles, won by the Trojans, 21-7. That M. U. team, incidentally, listed a couple of familiar names on its roster--fullback Don Faurot and halfback Chauncey Simpson.

Henry's teams were most formidable from 1924 through 1929, wining 34 games against 12 defeats and four ties. During this stretch, Missouri boasted top-flight backs in which worthies as Emmet "Abe" Stuber, present coach at Iowa State, Sam Whiteman, George Flamank and John Waldorf. Topping the lineman were Ed Lindenmeyer, All-American tackle, and Carl Bacchus, an end.

About this time, the Tigers moved their football activities to more spacious premises, Memorial Stadium, present site of Mizzou's home games. The stadium was completed in 1926 and was designed to take care of about 30,000 fans in permanent and end-zone bleachers. Post-war expansion has lifted that capacity to about 40,000.

Henry resigned in 1931, and his successor was Frank Carideo of Notre Dame fame. Carideo's three-year tenure was ill-starred. The Tigers under his guidance won only two games during that span. When he stepped down in 1934, Missouri grid fortunes were at their lowest ebb.

Came along then Don Faurot, fresh from a sparkling career at Kirksville State College. When the new regime took over in 1935, the then 33-year-old Faurot--returning to his alma mater--was accompanied by three of his present aides--Chauncey Simpson and John Simmons, and Trainer Oliver J. "Ollie" DeVictor.

Canvassing the state in a vigorous rebuilding program, Faurot brought Missouri out of its losing doldrums in his first season with a record of three wins, three losses and three ties. The next year, the Tigers won six against two loses and a tie including the first triumph over Kansas in six scoreless years.

The 1938 campaign marked Missouri's ascendancy into football's "big time", with a young sophomore--Paul Christman--showing the way. Pitchin' Paul passed the Tigers into Faurot's first Big Six title in 1939, winning All-America honors en route. Ol' Mizzou then accepted its first post-season invitation from the Orange Bowl.

Christman repeated as an All-American in 1940, while the Tigers carried away the conference crown both in 1941 and 1942. The '41 team, regarded by many as Faurot's greatest ever, went to the Sugar Bowl.

It was lead by another All-American, captain Darold Jenkins at center, while the '42 team had halfback Bob Steuber as its All-American performer.

Both these squads pioneered with Faurot's Split T-formation, the brainchild of Missouri's coach which is now in widespread use over the nation.

When Faurot enlisted in the Navy in 1943, Backfield Coach Simpson assumed the top job. Simpson directed his 1945 team to a Big Six title, and a Cotton Bowl invitation at Dallas.

Returning in 1946, Faurot turned out teams which qualified for the Gator Bowl in 1949 and 1950. Last season, Missouri was acclaimed the "surprise" team of the Big Seven by virtue of its second-place finish--a superb coaching job by Faurot and his staff with a team that was tabbed to finish no better than fifth in the race.



"Well-done, Bob" is Coach Faurot's commendation to Bob Castle (right), co-captain of the 1952 Missouri football team, who became the first grid letterman in more than a quarter of a century to graduate with Phi Beta Kappa honors last June. A three-year veteran at guard, Castle makes his home in St. Joseph. George Ekern, reserve center from Mexico, also was elected to Phi Beta Kappa last year.

## YEAR-BY-YEAR FOOTBALL RECORD--1890-1952-

Year	Coach	Won	Lost	Tied	Points Scored	Points Against	Captain
1890	A. L. McRae	2	1		112	28	William R. Littell
1891	Hal Reid	3	1		106	28	Curtis Hill
1892	E. H. Jones	1	2		28	18	D. L. Shawhan
1893	H. L. Robinson	4	3		142	130	Charles E. Young
1894	H. L. Robinson	4	3		134	98	Charles E. Young
1895	C. D. "Pop" Bliss	7	1		156	42	Charles E. Young
1896	Frank Patterson	8	5		273	78	Thomas R. Shawhan
1897	Charles Young	4	6	1	102	143	Adam Hill
1898	David L. Fultz	2	3	1	73	98	Thomas P. Howard
1899	David L. Fultz	9	2		242	58	John Kramer
1900	Fred Murphy	4	4	1	71	80	Carl Kruse
1901	Fred Murphy	2	6	1	31	154	Charles Washer
1902	Pat O'Dea	5	3		99	80	Thomas M. Ellis
1903	John F. McLean	1	7	1	46	83	Abner Birney
1904	John F. McLean	3	6		61	131	Homer H. Haggard
1905	John F. McLean	5	4		94	79	Harvey W. Anderson
1906	W. J. Monilaw	5	2	1	116	44	B. W. Tillman
1907	W. J. Monilaw	7	2		278	41	Edwin L. Miller
1908	W. J. Monilaw	6	2		196	47	Edwin L. Miller
1909	William W. Roper	7	0	1	86	36	Carl L. Ristine
1910	W. Hollenbeck	4	2	2	77	17	Franklin Thacher
1911	C. L. Brewer	2	4	2	61	67	Glen B. Shuck
1912	C. L. Brewer	5	3		135	69	Clarence P. LeMire
1913	C. L. Brewer	7	1		193	67	Charles R. Wilson
1914	H. F. Schulte	5	3		124	47	James A. Clay
1915	H. F. Schulte	2	5	1	72	102	Jacob Speelman
1916	H. F. Schulte	6	1	1	112	21	Harry S. Lansing
1917	H. F. Schulte	3	5		98	124	Paul Hamilton
1918	H. F. Schulte	No Varsity					
1919	John F. Miller	5	1	2	91	42	Anton Stankowski
1920	John F. Miller & James Phelan	7	1		156	61	Charles L. Lewis
1921	James Phelan	6	2		136	50	Herbert Blumer
1922	Thomas Kelly	5	3		98	90	Herbert Bunker
1923	Gwinn Henry	2	3	3	31	40	Clyde Smith
1924	Gwinn Henry	7	2		110	41	Arthur D. Bond
1925	Gwinn Henry	6	1	1	110	44	Samuel Whiteman
1926	Gwinn Henry	5	1	2	122	33	Carl Bacchus
1927	Gwinn Henry	7	2		129	90	George Flamank
1928	Gwinn Henry	4	4		138	102	Miller Brown
1929	Gwinn Henry	5	2	1	78	28	John Waldorf
1930	Gwinn Henry	2	5	2	41	132	Leonard McGirl
1931	Gwinn Henry	2	8		72	183	Frank Bittner
1932	Frank Carideo	1	7	1	32	184	Kenneth Kerby
1933	Frank Carideo	0	8		58	193	Charles Schiele
1934	Frank Carideo	0	8		25	172	Dan Caldwell
1935	Don Fautot	3	3	3	97	77	Clair Houston
1936	Don Fautot	6	2	1	107	74	Al Londe
1937	Don Fautot	3	6	1	42	64	Maurice Kirk
1938	Don Fautot	6	3		111	82	Frank Dickenson
1939	Don Fautot	8	2		155	79	Kenneth Haas
1940	Don Fautot	6	3		213	125	Jack Crocker
1941	Don Fautot	8	2		226	39	Darold Jenkins
1942	Don Fautot	8	3		288	107	Don Reece
1943	Chauncey Simpson	3	5		170	142	Game Captain
1944	Chauncey Simpson	3	5	2	176	224	Paul Collins
1945	Chauncey Simpson	6	4		170	174	Game Captain
1946	Don Fautot	5	4	1	158	166	Ralph Stewart
1947	Don Fautot	6	4		238	116	Verlie Abrams & Roland Oakes
1948	Don Fautot	8	3		331	161	Chester Fritz
1949	Don Fautot	7	4		264	225	Bob Fuchs
1950	Don Fautot	4	5	1	166	215	Bob Ebinger & Bronko Marusic
1951	Don Fautot	3	7		158	278	Bill Fuchs & Lowe Wren Jr.
1952	Don Fautot	5	5		147	159	Bob Castle & Bob Schoonmaker



# 1953 SCHEDULES OF MISSOURI'S OPPONENTS

	SEPT. 19	SEPT. 26.	OCT. 3	OCT. 10	OCT. 17	OCT. 24	OCT. 31	NOV. 7	NOV. 14	NOV. 21	NOV. 28
MARYLAND	MISSOURI AT COLUMBIA	WASHINGTON & LEE COLLEGE PARK	CLEMSON AT CLEMSON	GEORGIA AT COLLEGE PARK	NORTH CAROLINA AT CHAPEL HILL	OCT. 23 MIAMI AT MIAMI*	SOUTH CAROLINA AT COLLEGE PARK	GEORGE WASHINGTON AT WASHINGTON	MISSISSIPPI AT COLLEGE PARK	ALABAMA AT COLLEGE PARK	
PURDUE	OPEN	MISSOURI AT COLUMBIA	NOTRE DAME AT LAFAYETTE	DUKE AT DURHAM	WISCONSIN AT LAFAYETTE	MICHIGAN STATE AT LAFAYETTE	ILLINOIS AT CHAMPAIGN	IOWA AT LAFAYETTE	OHIO STATE AT COLUMBUS	INDIANA AT BLOOMINGTON	COLORADO A & M AT FT. COLLINS
COLORADO	WASHINGTON AT SEATTLE	ARIZONA AT BOULDER	MISSOURI AT BOULDER	KANSAS AT BOULDER	KANSAS STATE AT MANHATTAN	OKLAHOMA AT NORMAN	IOWA STATE AT BOULDER	UTAH AT BOULDER	NEBRASKA AT LINCOLN	OPEN	
SOUTHERN METHODIST	OPEN	OPEN	GEORGIA TECH AT ATLANTA	OCT. 9 MISSOURI AT DALLAS*	RICE AT DALLAS*	KANSAS AT LAWRENCE	TEXAS AT DALLAS	TEXAS A & M COLLEGE STATION	ARKANSAS AT DALLAS	BAYLOR AT WACO	T. C. U. AT FT. WORTH ----- DEC. 5 NOTRE DAME AT SOUTH BEND
IOWA STATE	SOUTH DAKOTA AT AMES	NORTHWESTERN AT EVANSTON	KANSAS AT LAWRENCE	KANSAS STATE AT AMES	MISSOURI AT AMES	DRAKE AT DES MOINES	COLORADO AT BOULDER	NEBRASKA AT AMES	OKLAHOMA AT NORMAN		
NEBRASKA	OREGON AT LINCOLN	ILLINOIS AT CHAMPAIGN	KANSAS STATE AT MANHATTAN	PITTSBURGH AT PITTSBURGH	MIAMI AT LINCOLN	MISSOURI AT COLUMBIA	KANSAS AT LINCOLN	IOWA STATE AT AMES	COLORADO AT LINCOLN	OKLAHOMA AT LINCOLN	
INDIANA	OPEN	OHIO STATE AT COLUMBUS	SOUTHERN CALIFORNIA AT LOS ANGELES	MARQUETTE AT BLOOMINGTON	MICH. STATE AT EAST LANSING	IOWA AT IOWA CITY	MISSOURI AT BLOOMINGTON	MINNESOTA AT MINNEAPOLIS	NORTHWESTERN AT BLOOMINGTON	PURDUE AT BLOOMINGTON	
OKLAHOMA	OPEN	NOTRE DAME AT NORMAN	PITTSBURGH AT PITTSBURGH	TEXAS AT DALLAS	KANSAS AT NORMAN	COLORADO AT NORMAN	KANSAS STATE AT MANHATTAN	MISSOURI AT COLUMBIA	IOWA STATE AT NORMAN	NEBRASKA AT LINCOLN	OKLAHOMA A & M AT NORMAN
KANSAS STATE	DRAKE AT MANHATTAN*	COLORADO A & M AT FT. COLLINS*	NEBRASKA AT MANHATTAN	IOWA STATE AT AMES	COLORADO AT MANHATTAN	WICHTA AT MANHATTAN	OKLAHOMA AT MANHATTAN	KANSAS AT LAWRENCE	MISSOURI AT COLUMBIA	ARIZONA AT TUCSON*	
KANSAS	T. C. U. AT FT. WORTH*	SEPT. 25 U. C. L. A. AT LOS ANGELES*	IOWA STATE AT LAWRENCE	COLORADO AT BOULDER	OKLAHOMA AT NORMAN	SOUTHERN METHODIST AT LAWRENCE	NEBRASKA AT LINCOLN	KANSAS STATE AT LAWRENCE	OKLAHOMA A & M AT LAWRENCE	MISSOURI AT LAWRENCE	

\* NIGHT GAME

University Libraries  
University of Missouri

## Digitization Information Page

Local identifier MizFootballGuide1953

### Source information

Format	Book
Content type	Text with images
Source ID	University Archives C:31/00/8
Notes	

### Capture information

Date captured	Jan 2024
Scanner manufacturer	Plustek OpticBook
Scanner model	A300 Plus
Scanning system software	Book Pavilion
Optical resolution	600 dpi
Color settings	24 bit color covers; 8 bit grayscale for the rest
File types	tiff
Notes	

### Derivatives - Access copy

Compression	Tiff: LZW compression
Editing software	Adobe Photoshop 2023
Resolution	600 dpi
Color	color covers; grayscale for the rest
File types	tiff
Notes	Images cropped, straightened, brightened