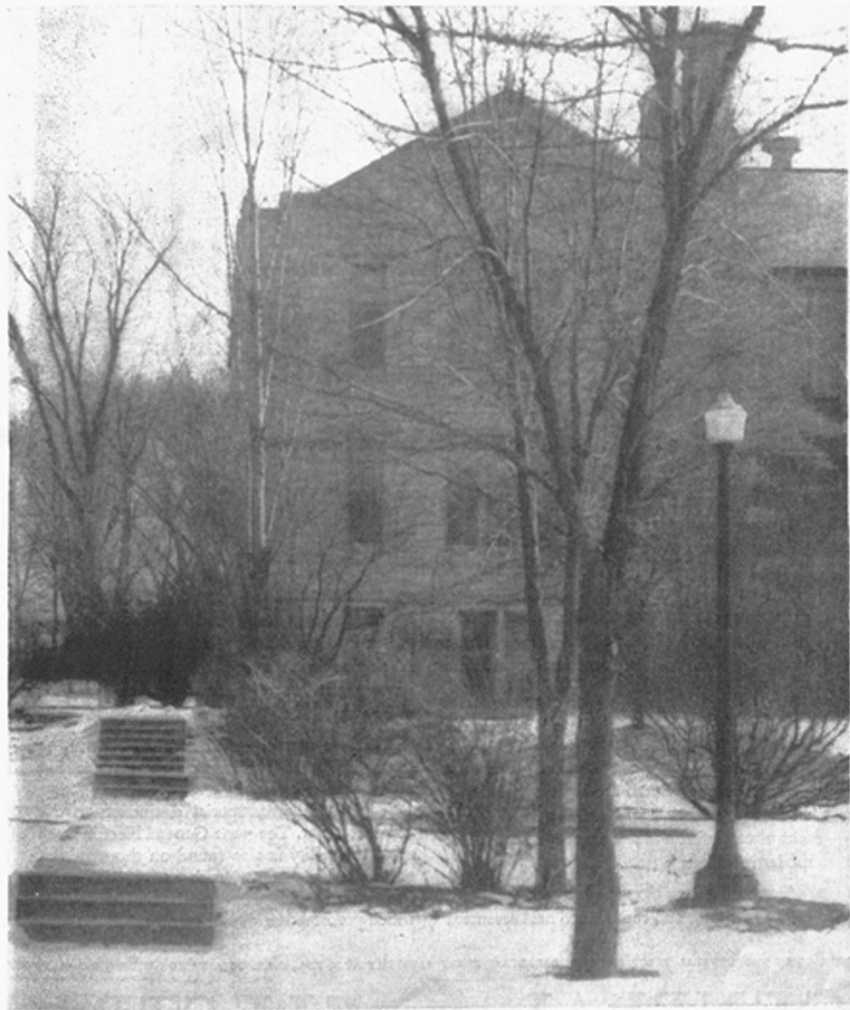


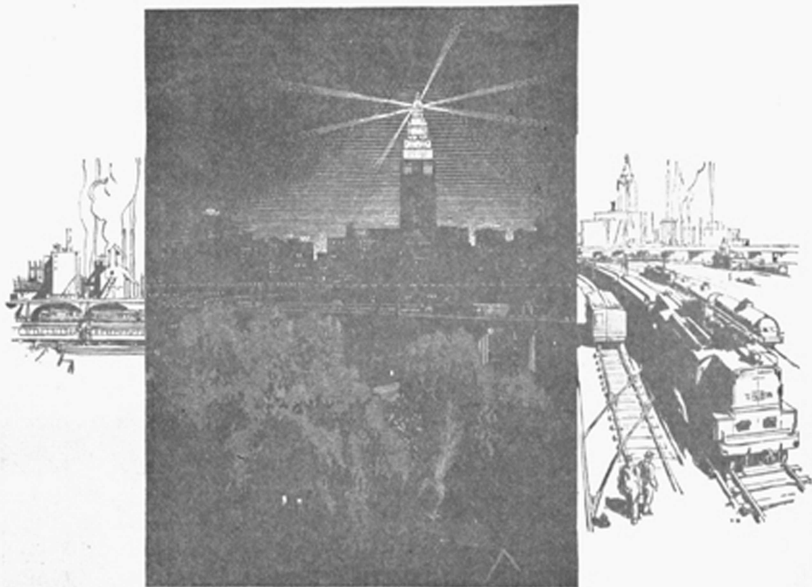
The Missouri Alumnus



Vol. XXXIII

December 1929

No. 4



Cleveland's New Railway Terminal Is G-E Equipped

THIS great \$60,000,000 station marks the latest advance in the electrification of union passenger terminals in America. It will be opened early in 1930.

Seven railway lines, all heavy passenger carriers, converge at Cleveland. Only an electrified terminal could carry the daily thousands of travelers to and from the heart of the city—with the necessary speed and convenience and with the comfort and smoothness demanded of modern railways.

Twenty giant electric locomotives, each eighty feet long and each able to haul seventeen

75-ton Pullman cars, will be supplied with power by five 4000-hp. motor-generator sets. A single operator in the passenger station automatically controls the two power substations miles away.

All these new electric locomotives carry the General Electric monogram. So do the big motor-generator sets. So does the floodlighting system, which gives special distinction to the terminal tower. The same General Electric mark of dependability is also found on thousands of other electric products, such as MAZDA lamps and electric refrigerators,—home necessities which promote health and comfort.

JOIN US IN THE GENERAL ELECTRIC HOUR, BROADCAST EVERY SATURDAY AT 9 P.M., E.S.T. ON A NATION-WIDE N.B.C. NETWORK

GENERAL  ELECTRIC

THE MISSOURI ALUMNUS—Published ten months each year by the sons and daughters of the University of Missouri. Entered as second-class matter October 3, 1912, at the postoffice at Columbia, Mo., under the Act of March 3, 1879.

Doan Suggests Alumni Concentrate Efforts to Obtain Gifts for the University

D. N. Doane, B.S. in Ag. '08, M.S. '19, of the Doane Agricultural Service, Management, Appraisal and Consulting Engineers, 3662 Olive St., St. Louis, is the author of the very concrete suggestions outlined in the accompanying article.

Is not this the opportune time for every alumnus of the University to think just a little more seriously of financial matters, as they affect our Alma Mater?

Our present Governor has taken the most progressive and forward looking step in this direction that has been taken by this Executive in many, many years. He has laid the ground work for some real accomplishments, regardless of whether his whole program is realized or not. His sound business approach to the problem is receiving a great deal of publicity, and hence consideration by all the people of the state. Thus, it seems to me that the time is here for some aggressive action on the part of those of us who are really concerned in our financial problems to translate our "wishes" into realities. Here is one suggestion:

We are all aware of the great volume of special gifts and endowments made by persons of means to private and semi-private (non-state) educational institutions. Those of us living in some of the cities where these institutions are located are familiar with the records of gifts running into the millions. These gifts build buildings, create endowments, permanently providing for research and instruction and all other phases of work or activities of our educational institutions.

Why is it that we have received so small a share of these funds? In my opinion it is largely because we have not been properly organized for receiving them. Here are some things we can do.

First, the proper ground work must be laid by the officials of the University. Just what and how this should be done will not be discussed at this time, for it is not the main point I wish to make. I feel sure that if we will do our part we need have no fear but what this phase of the matter will be amply covered.

The next step is for every alumnus who has friends of means to show them that at the University lies the greatest opportunity for a full expression of their generosity. The makers of these gifts do not as a rule like to throw their money into a common

pot for general or miscellaneous expenditures. Our plans and proposals must make it possible for definite and permanent types of work to be undertaken, and buildings erected that will stand as monuments to those giving them. Of course, the wishes and plans of the donors must fit into the basic plans of the University, but this would in no way obscure the gift or limit its usefulness.

The obtaining of these gifts is not the job of a press agent, or a high pressure salesman. It is the personal task of first an individual, then perhaps others who are invited to help work out plans and details. Our efforts must be made as opportunity arises and as we make contacts with those who have the resources. Further, our plans must be broad enough to include all sizes of gifts.

It would appear that these gifts will come from those who make them outright for a specific purpose, from those who create the fund as a memorial to some loved one, and as bequests in wills. Doubtless, a standing committee could be created who would work out plans and details, and furnish facts and personal assistance to those who felt they could make proper contacts, but lacked experience in knowing just how to go about it.

It scarcely need be said that the foregoing is little more than an outline of a thought. A very intangible thing, I hear you say. Quite true, but here are three inescapable facts:

1. Tremendous sums are now being given to many educational institutions.
2. The University of Missouri has not received her share.
3. With the right kind of a plan and a determined effort on the part of every alumnus, we can obtain more than we have in the past.

Let's go!

EXTRA IMPORTANT ANNOUNCEMENT

The report on the University made to the Missouri Survey Commission by Allen McReynolds of Carthage, Mo., member of the Commission in charge of investigating the needs of the University was made on November 30 and the full report will be published in the January Alumnus. The report includes an exhaustive study of the University and will be of tremendous interest to every alumnus, former student, faculty member and friend of the University. The report includes recommendations for a ten year program.

MR. AND MRS. PORTER MAKE GIFT TO UNIVERSITY

Mr. and Mrs. J. F. Porter of Kansas City have presented the College of Engineering of the University with a gift of special electrical equipment valued from \$12,000 to \$15,000. The gift was in memory of their son, Ralph E. Porter, of the class of 1926.

The curators of the University have accepted the gift and designated it the Ralph E. Porter Laboratory Equipment. This equipment will be used in instructional and research work, so as to help other young men who are preparing themselves for the same profession as was Ralph E. Porter.

Ralph Everett Porter was graduated from the College of Engineering in 1926. While a student here he was business manager of the Savitar in 1924. He was a member of the Alpha Tau Omega fraternity. He married Doris Martyn, a former student in the University. They had one child.

After getting his degree he went to Schenectady, N. Y., where he was employed by the General Electric Company. He was accidentally electrocuted after working only three days.

The gift of electrical equipment, given by Porter's parents, will be set up in a special room in the Engineering Building designated as the Ralph E. Porter Memorial Laboratory.

UNIVERSITY HAS RECORD ENROLLMENT

Co-eds are outnumbered almost two to one by men students in the University, according to S. Woodson Canada, who announced the total fall enrollment as 4035, the largest in history.

There are 2665 men students and 1370 women. The college of arts and science has the greatest registration of any division, with 1746. The college of engineering is second with 433, and the school of education has 423. Other divisions as follows: agriculture, 386; graduate school, 319; journalism, 301; business and public administration, 194; law, 147; fine arts, 127; and medicine, 72.

Thirty-nine states other than Missouri sent 619 students to the oldest university west of the Mississippi river. Illinois is first with 92; Oklahoma second with 81; Kansas sent 62, Texas 59 and Arkansas, 64.

Foreign countries represented and

Football Season Closes in a Most Glorious Fashion

By J. P. HAMEL

Completing their 1929 conference schedule with two of the most spectacular displays of brilliant football ever revealed by any eleven in successive games, the University of Missouri Tigers went into second place in the Big Six Conference race on Thanksgiving afternoon when they defeated Oklahoma, 13 to 0, in Memorial Stadium at Columbia. On the preceding Saturday afternoon, playing before more than 28,000 persons at Lawrence, they downed the University of Kansas, 7 to 0. Other November games brought victory over Washington at St. Louis, 6 to 0, and defeat at the hands of New York University at New York, 14 to 0.

It was the diminutive Russell Dills, sprinting quarterback, given a starting berth for the only time this season against Kansas, who scored 19 of the 20 points amassed by Missouri in those last two games, and turned a tottering Tiger season into bright success. He took a pass from Waldorf for the touchdown against Kansas and circled the Jayhawk left end on a fake place kick formation for the extra point. He used that same fake place kick formation against Oklahoma for one touchdown, and raced 97 yards to return a Sooner kickoff for the other. Bernie Schaff's point after touchdown from placement gave the other point against Oklahoma.

But this is no tale of Russell Dills. The little sprinter deserves the encomiums which have been heaped high upon him for his spectacular performances in those two games. His speed, his shiftiness, and his clever field generalship deserve all that has been said about him. He is a great football player, but it took more than a great football player to win from Kansas and Oklahoma. It took a great football team.

Let's go a little into the background of those spectacular plays. There was the nicely timed and perfectly placed pass from Captain John Waldorf, to send Dills across the Jayhawk goal line for a touchdown. There was the perfect faking of a place kick by Bernie Schaff to launch him on his sprint for the extra point, and the deadly blocking of Schaff to take out the one Kansas player in a position to spoil the trick.

There was the flying wedge formation to receive the kickoff against Oklahoma, in which every man did his part in giving Dills a place to run as he swept up the field, touchdown bound, and there was the spectacular sprint of Scott Kennedy as he raced up from behind his little team mate, ran over one Oklahoman and took out another to clear the path to the

goal, just as it seemed that the long sprint was to end on the 15-yard line.

There was again the perfect fake of the place kick by Schaff against the Sooners, and once more he took off the opposing safety man as Dills skirted end for his second touchdown. Those feats of blocking, often going little noticed by frenzied spectators, are no less the essentials of football than the more spectacular sprints of the ball carriers.

But we might go further back than these touchdown plays. Against Kansas, for instance, it was a 37-yard run by Lee Derry that carried the ball to the Jayhawk 20-yard line, from whence came the Waldorf-Dills pass for a touchdown. Against Oklahoma, again it was a series of passes, Waldorf to Dills, Derry to Dills and Waldorf to Hursley, that had carried the ball into scoring position for the second Missouri touchdown. Every one of these plays required 11 men, each doing his part, to make it succeed. Yes, it was a great football team that won those two great football games.

It is not amiss to go even farther back in the diagnosis of these two victories to recall brilliant line play in which the work of Bob Armstrong and Paul Brayton stood out so remarkably, to remember the punting and defensive work at end of Hubert Campbell, like Dills in the starting lineup for the first time against Kansas and playing the last quarter of that game with a leg he could hardly move, to bring back to memory the unparalleled work of Ray Smith and Waldorf on defense back of the Missouri line, and to think again of the way Art Lawrence, brilliant Kansas forward passer, was chased all over the field by a fast rushing Missouri forward wall, and his tosses covered by a defensive backfield which stopped the most dangerous aerial attack that any Kansas team in any year ever was able to unleash against Missouri.

Those are the things that make football. With that kind of individual and team performance football games are won. Plays work when they are executed as Missouri executed them against Kansas and Oklahoma, and they go woefully astray for the other fellow when they meet the defense which Missouri offered on the twenty-third of November and the subsequent Saturday.

Nor does all of this mean that things were easy for Missouri on either of those two days. It was no bedraggled Jayhawk that played host to Missouri, but rather a preened and fighting bird, imbued with confidence and carried forward by the momentum

of late season brilliance following earlier mediocrity. Nor was it a worn out Sooner eleven that came to Columbia, but rather an Oklahoma team in fine fettle, and one which remembered that there was an outside chance of a championship in the game in Memorial Stadium, and a certainty of second place in the conference race in victory there. The championship hope faded when Nebraska defeated Iowa State. Missouri took the second place stakes when Dills galloped away with the two touchdowns.

The team which Kansas placed in the field against Missouri this year appeared to veteran followers of the Tiger-Jayhawk relations to be the best that has come forth from the Kaw Valley in a dozen years. It was a big, hard hitting, hard fighting aggregation, well coached, and with the best passing attack that Missouri has faced in a number of seasons. The fact that the Kansans had an edge on Missouri in yardage gained, particularly in passes, may be explained in part, at least, by the fact that Missouri played a safe conservative game after acquiring the one-touchdown lead, while the Jayhawkers were in search of a touchdown from the first whistle to the final gun. But the big gains which the Kansans piled up grew from a real offensive strength, and the fact that every one of these advances, some of which were carried far into Tiger territory, was stopped short of the Missouri goal, is an eloquent tribute to the Missouri defense.

The Kansas game, despite the fact that the thermometer hovered below the freezing point, and a bitter cold wind carried a threat of snow, was surrounded with all the color which goes to make a Missouri-Kansas football game what it is. Missouri and Kansas old grads were there in force, along with thousands of impartial but highly interested spectators, looking for a good football game—which was what they found.

Weather conditions for the Tiger-Oklahoma clash were about as bad for the spectators, but playing conditions were better. The temperature was not so low, but the fans sat in seats from which several inches of snow had been recently swept, and players on the sidelines buried in snow to keep warm as they awaited their calls to service. The stadium gridiron, however, had been kept well protected by the canvas cover, and was in top shape, despite the fact that every out of bounds play sent players into a snowbath at the sidelines.

The Sooners were unable to gain with any consistency through the line (Now page 111 column 1)

WITH THE ALUMNI ASSOCIATIONS

PROGRESS MADE BY LAW SCHOOL FOUNDATION

By J. Coy Bour, Secretary

The Trustees of the University of Missouri Law School Foundation report that considerable progress has been made in securing subscriptions for an endowment for the School of Law. The Foundation, of which Hon. Edward J. White of St. Louis is President, was organized for the purpose of promoting the interests and welfare of the School of Law. Among the more important things the Foundation hopes to do are the following:

(1) Establishment of prizes or scholarships in honor of past members of the Law Faculty. Several members of the Class of 1905 have agreed to make annual contributions to the Foundation to enable the Law Faculty to establish scholarships in honor of Deans Martin and Lawson. Another annual prize in honor of Professor Tiedeman has been offered by Hon. Edward J. White. As the annual income increases, it is the hope of the Foundation that these prizes may be expanded into memorial scholarships which will stimulate scholarship and research among the law students.

(2) Assist the University in publishing and keeping to date an adequate Directory of the Alumni of the School of Law, especially of those alumni who are engaged in active practice. The Foundation is now engaged in this work and it is hoped that the Directory will be finished in the course of two or three months.

(3) Assist in promoting legal research by members of the Faculty—research in phases of unsettled Missouri law or critical examination of Missouri doctrines that are not counter to the rules established by weight of authority elsewhere. Provision must also be made for carrying the result of this research to the bench and bar of Missouri and making it available as a practical aid to the day by day practice of law.

(4) Provision to enable members of the Faculty to relate the various parts of the Restatement of the American Law Institute to the law of Missouri—in other words to extend their research into the fields of the Restatement in order to ascertain how the Missouri law squares with the Restatement, so that the Restatement may be of the most service to the Bar of Missouri. The undertaking of this work and making it available for publication (both of which might be done in cooperation with the State Bar Association) will add more to the prestige and usefulness of the Law School than any one thing it can do. At the present time two members of the Law Faculty are engaged in relating the Restatement of the Conflict of Laws to the law of Missouri. This work is being done in cooperation with the State Bar Association.

Some very thoughtful alumni believe that when the work and purpose of

the Law School Foundation become known to the alumni and former students of the Law School, they will make generous contributions both to its endowment fund and its annual working fund. The Trustees have provided that those who desire to contribute to the Foundation be permitted (1) to contribute a specific sum, said sum to be invested and the income used for furthering the objects of the Foundation, or (2) to promise to pay a certain amount each year, said annual donations to be used for such purposes as the Trustees may deem expedient. Either endowment or annual pledges or contributions should be sent to Professor J. C. Bour, Columbia, Missouri, Secretary of the Foundation.

The following have made contributions or pledges to the endowment fund: Virginia Booth; N. D. Brown; R. A. Brown; Robert Burnett; Chas. T. Butler; R. B. Caldwell; Henry Depping; Forrest C. Donnell; George R. Ellison; Lynn M. Ewing; Edwin E. Hoffman; Russell L. Keyes; D. E. Kilham; Samuel A. Liberman; Frank C. Mann; J. W. McAfee; Wm. T. Nardin; Earl F. Nelson; James E. Nugent; R. B. Oliver, Jr.; Roland F. O'Brien; J. L. Parks; R. B. Price; James A. Potter; Mary Louise Ramsey; Louis V. Stigall; Ike Skelton; Edgar Shook; Kenneth Teasdale; Lynn Webb; Edward J. White.

The following have made annual pledges to enable the Foundation to carry on its work, until income from the endowment fund will be sufficient for that purpose: H. H. Blair; Barney Baxter; D. C. Chastain; Chas. B. Davis; Ernest A. Green; Charles L. Henson; Lawrence Holman, Roy W. Harper; John C. Landis; H. L. Lincoln; Elza Johnson; Orestes Mitchell; Allen McReynolds; Edward S. North; James E. Nugent; Earl F. Nelson; Ned Nugent; John T. Sandison; Eugene Silverman; Chas. J. Strop, Jr.; R. D. Walker; George F. Wise; Edward J. White; Roscoe C. Anderson, arrangements.

LAW

R. B. Oliver, Jr., President of the Law Alumni Association, presided at the first annual meeting of our Law Alumni to be held in connection with the meeting of the American Bar Association, at Memphis on October 24. It is the plan of the Law Alumni to make this gathering of Missouri folk an outstanding feature of the American Bar Association meeting. J. L. Parks, Dean of the School of Law, and Frank Chambers of the Law School faculty were the guests of honor. Lawrence W. DeMuth, A.B. '20, A.M. '21, LL.B. '24, of Boulder, Colo., Secretary-Treasurer of the Delta Phi, acted as Secretary of the meeting. A. B. Knipmeyer, LL.B. '02, Attorney, Bank of Commerce Bldg., Memphis, is in charge of the dinner arrangements. Others present were: Harry C. Steinberg, Eldorado,

Ark.; Allen L. Oliver, Cape Girardeau, Mo.; E. W. Clausen, St. Louis; R. B. Oliver, Jr., Cape Girardeau, and C. C. McCollum, Pawnee, Okla.

NEW YORK CITY

G. E. Huggins, President of the New York Alumni Association, presided at the alumni dinner there on the evening of November 15, prior to the New York University-Missouri football game. The banquet room was filled to capacity and it was a most enthusiastic and interesting meeting. Alumni and former students were present from all up and down the Atlantic coast, all eager to renew acquaintances and to hear about the University. The speakers included Floyd F. Hanly, President of the Washington, D. C., Alumni Association; James C. Lawrence, President of the Philadelphia Alumni Association; Frank B. Thacher, representing the Chicago Alumni Association; W. B. (Bottles) Burruss, Washington, D. C.; Prof. Frank L. Martin of the School of Journalism; C. L. Brewer, Director of Athletics; Frank B. Rollins, President of the Alumni Association and Chairman of the Memorial Committee of Nine; Glenn J. Degner, Student President, Edwin Franden Dakan, representing Washington University, St. Louis, author of "Mrs. Eddy"; Karl Goetz, the University cheer leader, lead the singing and cheering with the assistance of Frank Birch and Oscar E. Riley, Secretary of the New York Alumni Association. Mr. Birch was in charge of the entertainment program. The Rodgers sisters, Jane and Ginger, furnished plenty of entertainment.

Visitors introduced included Webster N. Jones, general superintendent, processing division, The B. F. Goodrich Co., Akron, O., who has seventeen of our alumni in his employ; James A. Jackson, Vice-President of the National City Bank of New York City; Mrs. Thacher, Mrs. Lawrence, Mr. and Mrs. Lawrence are the youngest alumni who have a son in the University. They were graduated in 1910; Perry Munday, student in the University, son of Dr. and Mrs. Bert Munday of New York City. "The Mundays gave a mighty fine dinner party at their home the evening of the game, honoring the Columbia visitors"; Edwin A. Hough, editor of last year's Savitar and Chairman of this year's Memorial Campaign, a student in the University from Carthage, Mo., who with H. R. Long, editor of the Missouri Student, J. L. Reading, Vice-President of the Student Body, Louisiana, Mo., and "Buzz" Bauer, student Homecoming Chairman, drove through to New York from Columbia; Jack Powell, President, Arts and Science Student Body; J. Harrison Brown, A. P. Green Fire Brick Co., Mexico, Mo.; H. W. (Easy) Anderson of New York City, former football star and his daughter, Ruth, the

(Page 104, column 2 please)

University Loses Valued Faculty Member in the Death of Prof. Manly

Professor William Gwathmey Manly born in Greenville, S. C., on April 13, 1862, Chairman of the Greek Department and professor of Greek language and literature, and pioneer in the faculty government of Intercollegiate athletics in the Middle West, died at the University Hospital here on November 28, 1929, of an attack of angina pectoris. He had been ill only one day, having been seized with a heart attack while playing golf the day before.

Only two members of the University faculty antedate Prof. Manly in point of service. They are Prof. B. F. Hoffman, Pe.P. '83, B.L. and Pe.B. '84, M.L. '88 of the German Department, and Dr. J. W. Connaway, M.D. '91, of the Department of Veterinary Science. Professor Manly acted as Dean of the College of Arts and Science from April 12, 1912 to September 1 of that year.

The fifty-four Greek students will continue their regular class work at the same time and place. Prof. William Gwathmey will instruct the seven students in the elementary class, while those in advanced courses will be under the tutelage of Dean Miller.

Prof. Manly was graduated from the University of Virginia in 1884. He took his M. A. at Harvard in 1890 and immediately thereupon joined the faculty of the University of Missouri. He had been associated with Intercollegiate Athletics in the University almost since their inception and had been active in their administration by the faculty since 1891. He was one of the organizers of the Old Missouri Valley Conference and was Secretary of that organization for more than twenty years. At the time of his death he was Secretary of the newly organized Big Six Conference and was Secretary of the University Committee on Intercollegiate Athletics.

Not the least of Professor Manly's large services to the cause of his loved classics was his founding of the Classical Association of the Middle West and South, which now numbers in its memberships about 2500 teachers of Greek and Latin. As its first organizer and first president, he is affectionately referred to as the "Father of the Classical Association."

Gay V. Head, representing the College of Arts and Science on the Board of Directors of the General Alumni Association prepared the following resolution of appreciation for the Alumni Association:

"WHEREAS W. G. Manly has rendered to the University of Missouri a lifetime of service, and has endeared himself to all with whom he came in contact, and,

WHEREAS, the students, former students and alumni of the University recognize in his death an irreparable loss, and desire to evidence their appreciation of his services as teacher, counselor and friend,

BE IT THEREFORE RESOLVED

by the Board of Directors of the University of Missouri, on behalf of said Association and all former students and alumni, that it is the sense of the Board, and of the Association, that said W. G. Manly has accomplished much for the University; that he exerted a marked and lasting influence on the students who came under his supervision; that he labored unceasingly for the cause of the wholesomeness in Intercollegiate Athletics; and that all who knew him mourn his loss.

BE IT FURTHER RESOLVED that this resolution be called to the attention of the public press, and that a signed copy thereof be presented to Mrs. W. G. Manly."

Professor Manly married Miss Blanche Jordan of Columbia on August 30, 1911. Besides Mrs. Manly he is survived by the following brothers and sisters: Col. C. J. Manly of the U. S. Army, Fort Benning, Ga.; C. F. Manly, Greenville, S. C.; George Manly, Columbia, S. C.; Mrs. Lizzie M. Parks, Miss Louise F. Manly, and Mrs. Thomas Goldsmith, all of Greenville, S. C.; a cousin, Dr. John Manly of the University of Chicago also survives him. Prof. Manly was a member of Phi Beta Kappa, of the Masonic Lodge, and of Beta Theta Pi.

Brief funeral services were held at the home after which the body was taken to Warrensburg, Mo., for burial.

J. L. (Olie) Olson and his son, Lyman



John L. (Olie) Olson, B.S. in Ag. '23, Manager 1922 Barawarming, Pi K. A., Alpha Zeta, Q E B H, Citrus Plantation Manager, Dundee, Fla., wife and son, visited the Alumni Recorder

recently, on their way from Florida to Mr. Olson's home in St. Joseph.

The Loomis Hopes



Ralph Andrew Loomis, six, and Mildred Eleanor Loomis, three, with their mother, Mrs. Ralph Loomis, formerly Nellie Grace Brown of Triplett, Mo., B.S. in Ed. '21, Rev. Loomis, B.S. in Ag. '13, M.A. '21, is a Minister of the Dublin, O., Community church.

"Unto the Third Generation"



William Leyda Jesse, son of Richard H. Jesse, Jr., A.B. '02, Dean of Faculty and Professor of Chemistry, University of Montana, Missouri. We certainly want William Leyda to enroll in the University of Missouri.

His grandfather was the late Richard H. Jesse, President of the University. His aunts and uncles received degrees from the University as follows: Adeline C. Jesse, A.B. '13, B.S. in Ed. '14, Visiting Teacher, Denver, Colo.; Mrs. John C. Blankensigel (Caroline Jesse), A.B. '07, B.S. in Ed. '08, A.M. '09, Delaware, O.; Mary Polk Jesse, B.S. in Ed. '12, A.B. '10, A.M. '06, Columbia; Bredelle Jesse, A.B. '16, A.M. '17, University of Chicago; William Polk Jesse, A.M. M.E. '13, Columbia.

Another Keller Athlete



Chas. W. Keller, born June 30, 1929, son of Chas. C. Keller, B.S. in Ag. '21, baseball catcher '21, county agricultural agent, Greene County, Mo., Springfield, and Mrs. Keller, formerly Lillie Warren of Richland, Mo.

Hope O' Tomorrow Prospects



Robert C. Nardin, 12, and Donald Conway Nardin, ten, members of the Hope O' Tomorrow Club, sons of W. T. Nardin, A.B. '03, A.M. '04, L.L.B. '07, Vice-President, Pet Milk Co., 836 Arcade Bldg., St. Louis, and Mrs. Nardin, formerly Mary E. Conway, A.B. '04, of 6253 Westminster Place.

the Alumni Association, Mrs. Crangle, Prof. and Mrs. Frank I. Martin, I. A. Barth of the Barth Clothing Co., Columbia, W. C. Bowling, Karl Goetz, cheer leader, J. P. Hannel of the Columbia Tribune, E. J. Powell and J. Mitchell Gray, who returned to Columbia from New York with the party to visit his parents here.

The party spent four hours at Niagara Falls on the return trip.

Ben F. Rice, Traveling Passenger Agent, Wabash Railway Co., Moberly, was in charge of the party and certainly did his work well. A. J. Hezel, Pullman conductor, was Mr. Rice's right-hand man in making the trip an outstanding pleasure to be remembered by everyone.

ARTS AND SCIENCE



C. B. Rollins, Sr., Columbia, A.B. '74, L.L.B. '76, A.M. '81, formerly member of the Board of Curators was elected the first President of the Alumni Association of the College of Arts and Science at their first annual meeting during Arts and Science Week banquet at the Tiger Hotel on December 7. E. H. Criswell, of Wentworth Military Academy, Lexington, was elected Vice-President, and Miss Frances Backer, A.B. '28, Fulton, Secretary-Treasurer. Guy V. Head, Professor of Law, was elected to represent the Arts and Science Alumni on the Board of Directors of the General Alumni Association, the position which he has filled for the last five years upon appointments by Dean F. M. Tisdell of the College of Arts and Science. Mr. Head will prepare a constitution for the alumni association for the College of Arts and Science providing for the annual meeting and election of officers during the College week which Dean Tisdell advises is to be an annual affair. It has

(Next page please)

The Fulton Hope O' Tomorrow



Jennie Gertrude Fulton, born August 4, 1928, daughter of Clarence F. Fulton, L.L.B. '04, Land Law Clerk in General Land Office, 5305 Interior Bldg., Washington, D. C., and Mrs. Fulton, formerly Margaret E. Sanders of Washington, D. C. We have made arrangements for Jennie Gertrude to enroll here in 1946. Her father was collector of Wayne county, Mo., 1905-06, and has been in his present position since 1921.

Another Hope O' Tomorrow



Rosemary Elizabeth, nine, daughter of Arthur Haseman, B. S. in Ag. '17, Gamma Sigma Delta, in the dairy business, Switz City, Ind., and Mrs. Haseman, formerly Elizabeth Schlot.

ALUMNI ASSOCIATION

(Continued from 102)

originators of the Hope O' Tomorrow Club idea; George H. Combs, former Congressman from Jackson County, Mo., now Attorney in New York City, and Mrs. Combs; Joe Elliff, representing the Chicago alumni; H. L. Shrader, Poultry Specialist, Washington, D. C.

The Missouri football party included Captain John Waldorf and thirty-three members of the football squad. Coaches Gwinn Henry and Jack Crangle, Trainer Sam Gorman, C. L. Brewer, Director of Athletics, Dr. D. S. Conley, physician in charge, Mr. and Mrs. Harry Tidd, Hutchinson, Kan., Frank B. Rollins, President of

Ross M. Bickley, '00-02, Mechanical Engineer of Pittsburgh, 22 Water St., and Mrs. Bickley, formerly Julia M. Cauthorn former student, visited Mrs. Bickley's mother in Columbia recently. Their son, John Ross, is a Junior in the University, and their other son, Wm. B., we hope will enroll here soon. Mr. Bickley visited his parents in Mexico before returning to Pittsburgh.

also been suggested that the Arts and Science alumni will meet in Columbia on Homecoming Day as the other alumni groups are doing.

Dr. H. G. James, President of the University of South Dakota was the principal speaker at the banquet.

Marguerite Atteberry of Kansas City, a sophomore in the College of Arts and Science was crowned queen at the dance.

Mrs. Maxine Allen Bickley, wife of John Ross Bickley, son of Ross M. Bickley, '96-'01, and Mrs. Bickley, formerly Julia Cauthorn, '04-'05, Pittsburgh, Penn., wrote the song "Owed to Arts and Science," which was sung at the banquet and read by Karl Goetz.

Dean Tisdell and Frank B. Rollins, President of the Alumni Association were speakers at the alumni organization.

Other officers elected were: Vice-President, Fred Irion, Westport High School, Kansas City; Secretary/Treasurer, Julia Mae Ward, Teachers' College, Kansas City; Song Leader, Chas. Walker, Bureau of Research, Kansas City.

Mr. Buckles will appoint an alumnus of the School of Education to represent the alumni of that division on the Board of Directors of the General Alumni Association. C. E. Stephens, Past President of the Association, Marguerite Moyser, McKinley Intermediate School, H. H. Mecker, Prin. Blewett Intermediate School, Dr. C. H. Philpott, Harris Teachers College, composed the committee in charge of the dinner. Mr. Mecker presided. The speakers were Dean M. G. Neale of the School of Education, W. D. Beck, University of North Dakota, W. W. Charters, University of Ohio, Henry Gerling, Supt. of Schools, St. Louis, Ernest Horn, University of Iowa.

at Lawrence. It was one of the biggest and best alumni meetings ever held in Kansas City, presided over by President Cliff Langsdale, A.B. '04, Attorney, last year's President of the Organization, Shannon C. Douglass, L.L.B. '10, Attorney, one of Missouri's track stars, was in charge of the entertainment program and he did his job to a Queen's taste. James A. Potter, A.B. '02, L.L.B. '05, Jefferson City, was the principal speaker at the banquet. He spoke on the subject THEN AND NOW, talking about the University in the days when he enrolled and comparing them with the present. Other speakers were Gwynn Henry, head football coach, who brought down the house when he told the crowd that he knew the boys would do their best and that he was for the team, win or lose; Frank B. Rollins, President of the Alumni Association; C. L. Brewer, Director of Athletics; Oak Hunter, Moberly; Dr. H. H. Smiley, Texarkana, Ark.; Glenn J. Degner, Student President, Dr. Edwin Lee Miller, the only man who was twice Captain of Missouri's football team; Col. Carl L. Ristine, Lexington, Captain '09; Frank J. McCaslin, Harry B. Walker, formerly President of the Kansas City Alumni Association; James E. Gibson, Dinwiddie Groves and Mr. D. G. Saunders. Chester L. (Doc) Miller, former cheer leader, led the cheering and singing with the assistance of Hurlie Kaylor.

Dupuy G. Warrick, Attorney, Kan-

(Page 105, please)

EDUCATION

P. G. Buckles, A.M. '22, Principal, Woodland School, Kansas City, was elected President of the Alumni Association of the School of Education at their annual meeting in St. Louis on November 14 at the American and Annex Hotel, during the week of the State Teachers' Association meeting.

KANSAS CITY

William R. Hornbuckle, L.L.B. '09, Secretary-Treasurer, Missouri Abstract and Guaranty Co., was elected President of the Kansas City Alumni Association, at their annual meeting at the Baltimore Hotel on Friday evening, November 22, the night preceding the Kansas-Missouri football game

To All Our Friends:

Students!
Townpeople!
Faculty Members!
Alumni!

We extend thanks and appreciation for your patronage in the past and for the future.

Visitors:

No trip to Columbia is complete without at least one meal at Harris'

Call us when you want a table reserved, a specially prepared meal, party or bridge reservations.

EAT { Where the Food is Best
Where the Service is Prompt
And the Prices are Right

AT

HARRIS'

(where the atmosphere of the college town prevails)

So. 9th St., — Columbia

STANLEY SISSON, Proprietor

sas City, and Lowell R. Johnson, LL.B. '26, were in charge of the trip of the Missouri band under the leadership of George Venable and the student leader, Johnny Harrison, to the Kansas City High Schools. This was a fine trip and well managed under the leadership of Messrs. Warrick and Johnson.

The other officers elected: First Vice-President, Byron Spencer; second Vice-President, James A. Taylor; Secretary, William S. Mann; Treasurer, Chas. T. Daniels; Governor one year to fill Mr. Hornback's unex-

pired term; Ted O'Sullivan, Governors for two year terms, Cliff Langsdale, Lynn Webb, Carl Bacchus, Shannon C. Douglas, John Lucas, E. Kemper Carter, Trustees, R. C. Kemper, H. H. Crittenden, Fletcher Cowherd. Representative on the Committee on Intercollegiate Athletics, Frank J. McCaslin, re-elected. Julian Wornall was chairman of the nominating committee.

Dr. Jas. R. McVay showed motion pictures which he took of the Kansas-Missouri game in Columbia last year.

(Turn to page 108)

STEPHENS COLLEGE

A Junior College for Women
Columbia, Missouri

Member: The North Central Association of Colleges and
Secondary Schools

For Publications, Address:

President James M. Wood,
Stephens College,
Columbia, Missouri

Christian College

A Junior College for Women

Columbia

1851-1929

EDGAR D. LEE, *President*



**BUSY BEE
CANDIES**

FOR YOUR BEST GIRL

Come to the Busy Bee and your gift problem is solved. No matter where she lives — Busy-Bee has the answer. Send her

Busy Bee Candies.

We Parcel Post from Coast to Coast

417 N. 7th St.

6th & Olive

912 Olive

The TIGER HOTEL

Columbia's New Hotel

Modern — Fireproof

150 ROOMS

THOS. R. BOWEN,

Resident Manager

One of the Best Ball
Rooms in State

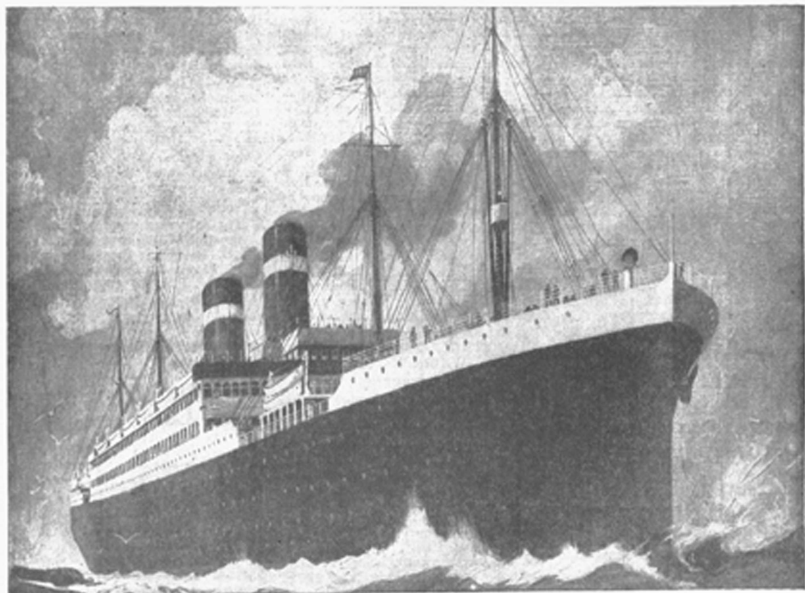
*Operated Under
The Sweet Hotels*

JOHN S. SWEET,

President

THREE MAGIC DATES!

. . . June 4, July 2, July 30



On these days the great cabin liner AMERICA will sail from New York to Europe as the official flagship of the college man and college woman.

Plan to sail on one of these dates . . . there's no better place than Europe for a vacation anyway! Many from your own class undoubtedly will be aboard . . . their wives and children, too . . . many undergraduates also, so you can get "the latest" from the '31s and '32s . . . and pleasant alumni from scores of universities. For the United States Lines and American Merchant Lines have been chosen by 103 college and

university alumni organizations as the Alumni transatlantic lane to Europe.

Make 1930 your EUROPE year! Graduate from land cares to ocean bliss. Take a postgraduate course in history—but see it, don't read it. If the AMERICA'S sailing dates are inconvenient . . . plenty of happy ones provided by others of your official fleet:

Leviathan, *World's Largest Liner* • George Washington
America • Republic • President Harding • President Roosevelt

And direct New York-London service weekly on
American Banker • American Shipper • American Farmer
American Trader • American Merchant

For rates, sailings, etc. . . . see or write your local steamship agent or alumni secretary

UNITED STATES LINES

45 BROADWAY, NEW YORK, N. Y.

AG ALUMNI—KANSAS CITY

The annual meeting of the Ag alumni during the week of the American Royal Livestock Show in Kansas City, was held on the evening of November 18 at the Hoof and Horn Club, attended by 47 alumni and former students and presided over by Ira Drymon, Manager of Longview Farms, Lees Summit, Mo., President of the Ag Alumni Association. Dean F. B. Mumford was the principal speaker, and told of the 65 per cent increase in the freshman Ag enrollment and of sixty applications of Ag students for advanced standing. He outlined the needs of the College of Agriculture and told in some detail of the work of the State Survey Commission and its importance, and urged the alumni to support the efforts of the Commission. Other speakers were E. A. Trowbridge, Professor of Animal Husbandry, Prof. L. A. Weaver of the Dept. of Animal Husbandry, Wm. J. (Bill) Loeffel of the Ag faculty, University of Nebraska, who delivered greetings from "Horsepower" Davis, Props. E. G. Maxwell, Wainwright, Coach Schulte and Jess Wright; Paul Schowengerdt, Agricultural Commissioner for the Wabash, J. H. Bray-

ton, Paris, Mo., who pointed out the necessity of cooperating with the Agricultural College in making progress in the farming industry; Howard Smith, senior in the College of Agriculture, and member of the livestock judging team, who spoke for the team; O. E. (Dick) Allen, Agricultural Commissioner, St. Louis Chamber of Commerce; and Frank (Poley) Richards, Chicago.

Those in charge of the meeting were W. T. Angle, Robert Clough, and E. A. Ikenberry. Those present were: Ashleigh Boles, A. F. Stephens, St. Louis; R. D. Jones, Joe Powell, Raymond R. Vadrnais, H. K. Hannah, Lawrence Braun, R. C. Maupin, J. V. Davis, Kansas City; F. H. Leiker, Manhattan, Kan.; Thos. A. Blacklock, King City; Jack Martin, Weatherford, Tex.; John R. Wilson, Maysville; O. R. Tripp, Cassville; F. E. Rogers, Harrisonville; J. U. Morris, Trenton; Ed Mayes, Warrensburg; A. J. Dinsdale, Maryville; Freeman Scott, Rea; E. M. (Smoky) Woods, Hamilton; E. S. Matteson, Paris; H. R. Nelson, Independence; M. J. Regan, Sam B. Shirky, Kenneth L. Turk, D. W. Chittenden, M. T. Foster, T. A. Ewing, and S. T. Simpson, Columbia.

S. Hornback, Mr. James Van Waggenen, Mr. John Gordon and Mr. Wm. B. "Bottles" Burruss.

Dr. Halley then introduced the speaker of the evening, Mr. Pixley, who told us about the old football days at Missouri, and what he hoped to accomplish at George Washington U.

We were very glad to have with us Major Lloyd E. Jones, son of Dr. J. C. Jones. Major Jones is now stationed at the Army War College in Washington, and we hope to see more of him while he is here.

It was announced that a luncheon would be held every Wednesday at the University Club, 15th and I Streets, N. W., between the hours of twelve and one, and it is hoped that anyone passing through Washington will try to attend these luncheons. There will always be someone to welcome you.

The following were present: Preston C. Alexander, A.B. '09, L.L.B. '11; Mrs. Preston C. Alexander; Floyd B. Brinkley, B.J.; Milo Brinkley, B.S. '03, C.C. '06; Mr. and Mrs. Wm. B. Burruss; Douglas B.

(Next page please)

PROFESSIONAL DIRECTORY

Cherry 1978 Res. Fairmount 6363
GROVER C. HOSFORD
Attorney and Counselor at Law
1630 Engineers Bldg.
Cleveland, Ohio

Res. Phone, Central 2900
Equitable of New York
ERNEST STAUDE
Contracts Indemnifying for
Loss
to Persons and Property
1806 Ambassador Bldg.
St. Louis, Mo.

E. KEMPER CARTER, C. E. '12
ALBERT WATERS, C. E. '12
Materials of Construction
The Carter-Waters Corporation
Building and Paving Materials
2049 Main St. Kansas City, Mo.

Save Systematically and
Safely

BOONE NATIONAL SAVINGS & LOAN ASSOCIATION

204-206 Guitard Building,
Columbia, Missouri
W. S. St. Clair, Secretary

DISTRICT OF COLUMBIA WASHINGTON

The University of Missouri Alumni Association of Washington, D. C., held a banquet and reception on October 23, 1929, in the Ball Room of the National Press Club, with Mr. James E. Pixley, Director of Athletics at George Washington University, as guest of honor. You will all remember Jim Pixley in connection with football at Missouri U.

Mr. Floyd Hanly, President, opened the meeting, introducing the Master of Ceremonies, Dr. Chas. H. L. Halley, who called on the following to give talks about their experiences in New York last year while attending the Missouri-New York football game, and about the coming game to be played on November 16; Mr. John

The Bowling Lumber Co.

18-22 S. 8th St.

Columbia

Phone 2

JOHN L. PLATT Electrical Supplies

17 S. Ninth St.
Columbia, Mo.

Electrical supplies for all
alumni — for alumni patron-
ize Alumnus advertisers

John Platt is an alumnus of the
College of Engineering

GLUE-LOCKED
WIDER GUMMING
CLOSE TO THE
CORNER SEALS
EASILY AND
STAYS SEALED
WIDER FLAP
INCREASES
CAPACITY

Compare
GLUE-LOCKED
YOUR OWN
ENVELOPES

THE OLD WAY

Wider
Gumming
Close to the
corner seals
easily and
stays sealed
Wider Flap
increases
capacity

BERKOWITZ ENVELOPE CO
KANSAS CITY, MO.

The Drug Shop

815 Broadway

W. C. KNIGHT, Prop'r.

Let us overhaul your kodak so
you can win some of the \$30,000
Eastman cash prizes.

Alumni Patronize Alumnus Advertisers

Cornell, B.J. '28; Mr. and Mrs. Lloyd H. Dopp; Elsie Greenlee Farley, B.S. '19; Belmont Farley, B.S. in Ed. '18; John B. Gordon, B.S. in Agr. '09; Mrs. J. B. Gordon; Dr. Chas. H. L. Halley, A.B. '18; Mr. and Mrs. Floyd Hanly, '09; John S. Hornback, A.B. '16; Mrs. John S. Hornback; F. M. Hill; Major Lloyd E. Jones; Elizabeth Northcutt, B.S. in Ed. '24; Mr. and Mrs. James E. Pixley; Madge J. Reese, B.S. '14; Frank B. Scheetz, '85-'87; Mrs. Frank B. Scheetz; G. B. T. Thorne, B.S. in Agr., M.A.; James H. Van Wageningen, B.S. in C.E. '08; Edwin A. Riley; Jena De Imhoff Young.

Floyd F. Hanly, President of the Washington, D. C., Alumni Association, who presides over their weekly luncheons, reports the following interesting incident at one of their luncheons recently: "Notices of our weekly luncheon, November 6, caught the eyes of two staunch friends of the class of 1886, Dr. Wm. Jasper Spillman and William Gerig. They had not seen each other during the 43 years since graduation. The luncheon afforded a convenient meeting place and a dozen or more sons of Missouri, who trailed many years behind them, witnessed their friendly gleam and cordial greeting. Dr. Spillman resides at 1705 Lanier Place, N. W., Washington, D. C., and is at present Principal Agricultural Economist of the Agriculture Dept. at Washington, and Mr. William Gerig, Munitions Bldg., Washington, D. C., is in charge of the Dredging of Rivers, Harbors and Lakes for the U. S. Engineers."

ST. LOUIS

Clyde H. Snider, President of the St. Louis Alumni Association, presided over the big party there on November 8, the night before the Washington-Missouri game which Missouri won, 6-0. Three hundred alumni and former students and the members of George Venable's great Missouri Band, under the leadership of Norman Falkenhainer, of St. Louis, attended the dinner. Karl Goetz, the cheer leader, was there.

The speakers included Frank B. Rollins, Columbia, President of the Alumni Association, C. L. Brewer, Director of Athletics, Gwinn Henry, head football coach, Harry Lansing, assistant football coach, Harry J. Huff, head track coach, Mrs. W. T. Nardin, permanent Secretary of the class of 1904, George C. Wilson, member of the Board of Curators, and Henry Depping, assistant attorney general, who delivered an oration with the assistance of Pat O'Bryan and Sam Liberman.

Honor guests at the dinner were Mr. and Mrs. Frank R. Tate, donors of Lee H. Tate Hall, and honorary alumni of the University, and Mr. John Rush Powell of the St. Louis Schools. Mr. Powell was largely responsible for the successful tour made by the Missouri Band to the five St.

(Now page 110 please)



The best way to begin a

California winter Santa Fe "all the way"

The Santa Fe offers you the only extra fast, extra fine, extra fare service to Southern California—

It has no rival

Six daily California trains to choose from—

The Chief—Extra fare because extra fast and extra fine. Lv. Kansas City 10:30 p. m.

The California Limited—exclusively first class—no extra fare. Lv. Kansas City 8:15 a. m.

The Grand Canyon Limited—exclusively first class. No extra fare. Runs direct to Los Angeles carrying Pullmans for Phoenix and Grand Canyon as well as Los Angeles. Lv. Kansas City 10:00 a. m.

The Navajo—Lv. Kansas City 1:35 a. m.

The Seacoast—Lv. Kansas City 10:00 p. m.

The Missionary—Lv. Kansas City 10:50 a. m.—no extra fare.

Fred Harvey dining service is another distinctive feature of this distinctive railway.

Midwinter Escorted All-Expense Tours on certain days in January, February and March.

Make Pullman reservations early

G. W. HAGENBUCH
D. P. A. 719 Walnut St.
Phone Main 7340



the Indian-detour-Grand Canyon Line

Louis High Schools on the day of the dinner.

Mrs. Louise Dickson Stark, B.S. in Ed. '19, Secretary of the St. Louis Alumni Association, and Bert Clark, A.B. '28, had charge of the dinner.

AG ALUMNI IN CHICAGO

J. M. Bewick, B.S. in Ag. '20, of the Fertilizer Dept., Swift & Co., Chicago, was in charge of the second annual Missouri Ag Alumni banquet at the Saddle and Sirlin Club in Chicago on December 2, during the week of the International Livestock Show. W. W. (Farmer) Rusk, director of farm programs, Great Lakes Broadcasting Co., Straus Bldg., 310 S. Michigan Ave., Chicago, reports that the meeting was an outstanding success with the following present: H. B. Huntington, 6621 Normal Ave., Chicago—Swift & Co., Fertilizer Dept.; Arthur E. Indermark, Mississippi Glass Co., 360 N. Michigan Blvd.; Hugh D. Triplett, 1230 Washington, Chicago Prairie Farmer; Lyman G. Neel, Hales & Hunter Co., 327 S. LaSalle, Chicago; C. A. Helm, Columbia; George S. Templeton, Educational Service Cottonseed Products Ass'n, 915 Santa Fe Bldg., Dallas, Tex.; D. J. Griswold, N. D. Agricultural College, Fargo; C. R. Moulton, 506 S. Wabash Ave., Chicago; J. W. Burch, Columbia; Howard Hackedorn, Pullman, Wash.; E. M. Harmon, Associate Editor, Successful Farming, Des Moines, Ia.; Ray E. Miller, Director Livestock Marketing, Ill. Agricultural Ass'n, 698 S. Dearborn St., Chicago; J. F. (Poley) Richard, Drivers Journal, 136 Exchange Ave., Chicago; M. N. (Skinny) Witt, Swift & Co., Hide Dept., Chicago; J. M. Jones, Texas Experiment Station, College Station, Tex.; W. L. Stangel, Texas Technological College, Lubbock, Tex.; F. E. Lacey, Swift & Co., Chicago; D. W. Chittenden, Columbia; Robert E. Funk, 6621 Normal Ave., Chicago; Garland Russell, Swift & Co., Beef Dept., Chicago; E. A. Trowbridge, Columbia, and F. M. Willhite, University of Illinois, Urbana.

Those present at the banquet wired Dean Mumford as follows: "If at any time we can do anything to serve our College we are at your command."

Prof. E. A. Trowbridge of the Department of Animal Husbandry was the principal speaker. E. W. (Farmer) Rusk was toastmaster.

LITTLE ROCK

Jack T. Lynn, Manager of the Missouri State Life Insurance Co., Little Rock, reports a meeting of their Alumni Association on the day of the Kansas-Missouri game when these heard the game play by play by special wire: Mr. and Mrs. M. Moss Davis, T. J. Bransford, Mr. and Mrs. Jack D. Crandall, N. B. (Gunboat) Smith, R. F. Lofland, Stanley Andrews, D. D. Ricketts, George Garaffo, S. P. O'Bannon, Mr. and Mrs. H. K. Thacher, Mr. and Mrs. M. W. Muldrow, J.

P. Riley, Geo. M. Craig, G. O. McFarlane, R. B. Bentley, Mr. and Mrs. R. P. Miller, E. J. McNeely, R. B. Smith, and Jerry Wilson.

DETROIT

P. T. Graves, '09-'12, Territorial Manager, General Motors Acceptance Corp., General Motors Bldg., Detroit, O. B. Price, B.S. in Ag. '20, Agricultural Agent, N. Y. Central Lines, W. W. Burden, B.S. in C.E. '12, 8835 Linwood Ave., and E. C. Robinson, B.S. in E.E. '12, District Manager, Century Electric Co., 934 Dime Bank Bldg., President of the Detroit Alumni Association, greeted the football party upon their arrival in Detroit on the way to New York City and rode to Windsor with us.

GEOLOGY

In May of this year four of the alumni of the University who had specialized in geology were told that the department of geology had a larger number of students than ever before desiring to do graduate work in the department, and that only \$360 had

been awarded such graduate students for fellowships and scholarships. Soon after this, Mr. W. B. Wilson called a meeting of alumni of the department of geology residents in Tulsa, Okla., and at that meeting a plan was formulated for raising money for fellowships and scholarships. The men whose names appear below have pledged nearly \$1200 a year for three years for such fellowships and scholarships. S. P. Borden, H. S. Cave, J. M. Clark, Virgil Cole, F. W. Floyd, J. L. Gartner, R. H. Hall, C. W. Hones, Alex McCoy, R. S. McFarlane, G. C. Maddox, Eddie Markam, Ed Minnis, L. Murray Neuman, George Pinkley, A. S. Price, Robert Riggs, H. M. Scott, P. N. Higgins, and W. B. Wilson.

The money pledged will have a much more far reaching result than its material aid to the department of geology in its present straitened circumstances. It represents a realization by some of the alumni of the serious needs of the University—needs that hinge around the advancement of the scholarly attainments of the University—and that such scholarly attainments are the main business of an educational institution.

You'll Be Astonished

at the high type of equipment and service
to be found
at each



Pierce Pennant Terminal

The features of these terminals include:—

A beautifully appointed dining room in which a delicious table d'hôte dinner is served for one dollar, a la carte dishes at popular price—a soda fountain offering a complete line of drinks and sandwiches—curb service with ample space for parking—luxurious lounge for ladies—men's rest room—free emergency hospital and ambulance service for

motorists—and complete service for your car. The terminals are open 24 hours every day in the year.

PIERCE PENNANT TERMINALS

are located near Columbia, Mo., on U. S. Highway 40, and near Rolla, Mo., and Miami and Tulsa, Okla., all on Route 66.

Visit Our Magnificent Hotels at the Columbia, Mo., and the Rolla, Mo., Terminals.

PIERCE PETROLEUM CORP., St. Louis, Mo.

Refiners and Marketers—Pierce Pennant Products

FOOTBALL SEASON

(Continued from page 101)

against Missouri, but the Tigers, taking no chances of a runaway by the Oklahomans after a midfield forward pass, played safe, preferring to exert their defensive abilities in stopping the pass receiver rather than breaking up the tosses. This style of play, together with the excellence of the Mills-to-Churchill passing combination, gave the Oklahomans a tremendous mid-field yardage, with the Tigers only breaking up the passes when the invaders actually became menacing, deep in Missouri territory.

Oklahoma presented a slightly less talented team than Kansas, but just as hard a fighting aggregation—and as to which game packed the most thrills, superlatives cannot be described with comparatives.

The Missouri invasion of the camp of Washington University at St. Louis revived that old and honored football relationship—the oldest by the way in the Missouri traditions—and added another Missouri victory, 6 to 0, to the preponderant list of Tiger triumphs over the Bears.

Washington presented a well coached and talented team, and a team which seemed to have but one end in view—to stop Missouri. The Bears found the Missouri defense impregnable, and their own offense came to light but rarely, but they did set up so stern a defense that the Missouri team had difficulty in getting its own attack to click.

Derry led a line plunging advance which left the spectators breathless, and set the stage for a perfect forward pass, Waldorf to Hursley, to send the veteran Missouri end scurrying across the goal line for the only score of the afternoon. Washington failed to make a single first down during the game, while Missouri counted 15.

While they were faced with opposition at New York which did not measure up to the strength which the Violets mustered a year ago, the Missourians themselves never seemed to hit their stride on the Yankee Stadium gridiron, and they stood helplessly while the New Yorkers counted two touchdowns and victory. The first resulted from a run by Beryl Pollet, ace of the New York backfield—a sprint of more than half the length of the field on the third play of the game, and the second was scored by Captain Grant when he intercepted a pass from Waldorf as the Tigers were fighting desperately to overcome the early New York lead.

The 1929 season has thus passed into history with Missouri holding second place in the Big Six race, with a record that includes victories over Kansas, Oklahoma and Iowa State, a tie with Nebraska and defeat at the hands of Kansas State in the conference, and victories over Washington and Drake and defeat by New York outside.

And with the fading season go nine veteran grid men, the esteem of whom was testified by the resounding cheers

which went up for them as one by one they came off the snow-bordered gridiron of Memorial Stadium in the closing minutes of the Oklahoma game Thanksgiving afternoon. Captain Waldorf is through, after three full years of varsity competition, for Missouri. So are Scott Kennedy, Bernie Schaff, Clyde Hudgens and Keith Hursley. Dick Morgan and Ray Smith have given two years to Missouri after a year of competition in other schools.

WEDDINGS

(Continued from page 100)

Lovely-Murray

Robert B. Murray, B.S. in B.A. '24, Acacia, and Miss Irene Lovely of Corning, Ia, a graduate of the University of Nebraska, were married at the home of the bride's parents, November 5, 1929. They are at home in Marceline, Mo.

Burton-Cons

Miss Nelle T. Burton, A.B. '27, formerly instructor in mathematics in the University City, Mo., High School, and Clarence F. Cons, of Houston, Tex., were married at the home of the bride's parents in Moberly on November 2, 1929.

Copeland-Conrades

Otto S. Conrades, B.S. in Ag. '17, and Miss Gertrude Copeland, both of St. Louis, were married there on November 5, 1929. They are at home in Glen Forest, St. Louis County. (Now page 112)

Christmas Giving:

Wherein we transform it from "Shopping Problem" to "Shopping Pleasure"

It seems to us that this harried age is beset with altogether too many redoubtable "problems," real or fancied. Hence we dedicate the facilities of our six-story institution to the task of laying the ghost of one of the most annoying of them—that half-mythical "problem" of finding suitable gifts for men. Really, now, it is no problem at all. Here are wearables and personal accessories from the four corners of the globe, each one by a prominent European or American maker. Each item is styled in accordance with the current preferences of the leaders in the fashion world. Here is a great assortment of gift suggestions that embraces the range of a Myriad varied tastes—all good. We trust that women shoppers will find here an end to an old shopping problem and a beginning of a new shopping pleasure.

BOYD-RICHARDSON · ST. LOUIS

WEDDINGS—Continued

Emmert-Singleton

Dr. J. Milton Singleton, '12-13, Phi Gamma Delta, and Miss Margaret Emmert, both of Kansas City, were married there on December 14.

Smith-Griffiths

Dr. Harry C. Griffiths, A.B. '26, M. D. St. Louis University, Physician of Moberly, and Miss Lavinia Smith, of New Franklin, Mo., were married on November 3, at the home of the bride's parents. They are at home in Moberly where Dr. Griffiths is practicing.

Smith-Crabbe

Maurice Brownell Crabbe, '27, Sigma Nu, Sigma Delta Chi, Mason City, Ia., and Miss Carolyn E. Smith, Newton, Ia., were married on Thanksgiving Day at the home of the bride.

Jacobs-Brown

Mary Elizabeth Jacobs, Alpha Chi Omega, Muskogee, Okla., and Chas. C. Brown, Jr., Sigma Phi Sigma, now on the editorial staff of the Evening Appeal, Memphis, Tenn., both former students, were married on November 21 at the home of the bride. They are at home at 1749 E. Glenwood Place, Memphis.

Frances-Head

Morris L. Head, '21-24, Alpha Kappa Psi, Delta Kappa, Secretary of our Alumni Association in Oklahoma City, and a Security Salesman there, and Miss Vivian Francis, Chi Omega, graduate of the Oklahoma A. & M. College, were married on November 27, 1929, in Oklahoma City and came to Columbia on the Oklahoma University football special to attend the Thanksgiving game here and then went on to New Orleans and Cuba. They are at home in Oklahoma City, 302 W. 14th St.

Kahn-Barth

Judge Irvin V. Barth, A.B. '07, A.M. and I.L.B. '09, Rollins Scholarship, Phi Beta Kappa, Q. E. B. H., Phi Delta Phi, Theta Nu Epsilon, and Mrs. Barth, formerly Miss Cassie Kahn, '06, St. Louis, announce the marriage of their daughter, Miss Jane, to Richard Sloss, son of Judge and Mrs. M. C. Sloss of San Francisco.

BIRTHS

Christine Diehl Hogan, born December 21, 1928, the daughter of William Cole Hogan, Law '28, K. A., Phi Delta Phi, Homecoming Committee, of the First National Bank, Kansas City, and Mrs. Hogan, formerly Christine Diehl, A.B. '28, Chi Omega. They live at 6038 Brookside Blvd., Kansas City, where they recently moved from Dallas.

Frank Vesser, '21-23, insurance man of St. Louis, and Mrs. Vesser, form-

erly Miss Evelyn Sutton of Columbia, announce the birth of a son, William Edward, on November 9, 1929, at their home in St. Louis.

James P. McConney, '15-18, of the Prairie Oil & Gas Co., Pawhuska, Okla., and Mrs. McConney, formerly Beatrice E. Heibel, B.S. in Ed. '19, announce the birth of a daughter on November 3, 1929, at St. John's Hospital in Tulsa.

Dr. William H. Norton, A.B. '19, A.M. '21, Surgeon, 634 N. Grand, St. Louis, and Mrs. Norton, formerly Flavia M. James, A.B. '21, announce the birth of a daughter on Homecoming Day, October 26.

Mrs. J. E. Marquette, formerly Louise Bohn, B.S. in Ed. '27, Delta Phi Delta, and Mr. Marquette, announce the birth of a daughter, Marie Louise, on October 30, 1929, at their home in Columbia, 1611 Bass Ave.

Richard Henry Jesse, Jr., A.B. '02, Dean of the Faculty and Professor of Chemistry in the University of Montana, Missoula, and Mrs. Jesse, announce the birth of a daughter, Mary Margaret, on November 8, 1929.

Dr. Harry C. Lapp, A.B. '21, Acacia, and Mrs. Lapp, formerly Carolyn Twyman, A.B. '23, of Kansas City, announce the birth of a daughter, Julia Ann, on November 6, 1929.

R. J. Silkett, '24-27, agricultural promotion dept., Wabash Railway, formerly with the College of Agriculture here, and Mrs. Silkett, announce the birth of a son, on November 12, at the University Hospital in Columbia.

Mrs. Cecil R. Prettyman, formerly Betty Gunn, Arts '26, Gamma Phi Beta, and Mr. Prettyman, graduate of the University of Kansas, member of Delta Upsilon, announce the birth of a daughter, Diane Barclay, at their home in Kansas City on November 12.

Victor Hugo Drumm, B.S. in Ag. '15, Manager of the Standard Egg Farms, Cape Girardeau, and Mrs. Drumm, announce the birth of a son, Manuel, on November 11, 1929. This is their second son.

Chas. M. Van Dyne, A.B. '25, football '22, '23 and '24, and Mrs. Van Dyne, formerly Myrtle J. Stewart of St. Louis, announce the birth of a daughter, Charlotte Stewart, on October 28, 1929, at their home in Sedalia.

James W. Case, B.S. in Eng. '23, General Electric Co., Schenectady, N. Y., and Mrs. Case, announce the birth of a son, James Willbur, Jr., on October 31, 1929, at their home, 138 S. Country Club Drive, Schenectady.

DEATHS

Robert Enloe, B.S. in Ag. '20, born and reared in Jefferson City, died in Tulsa, Okla., on November 8, 1929, from a bullet wound accidentally inflicted ten days before as he was in the act of returning a borrowed revolver to its owner.

Enloe is survived by his wife, two children, two brothers, Dr. David L. Enloe of Jefferson City, and Justin Enloe of Tulsa, and two sisters, Mrs. David Leitch, A.B. '23, 5330 Delmar, St. Louis, and Mrs. Roy T. Davis, wife of the U. S. Minister to Panama. (See page 114 please)

John Hancock Series

BUILDING
an ESTATEWhat Can Be
Done With
Life Insurance

TO plan and build an estate of substantial size is a serious and often a life-long problem.

Is the estate you will have sufficient to do for your family all you would like to have done? If not, do you know how you can increase it immediately? How you can make sure of leaving adequate financial means for them?

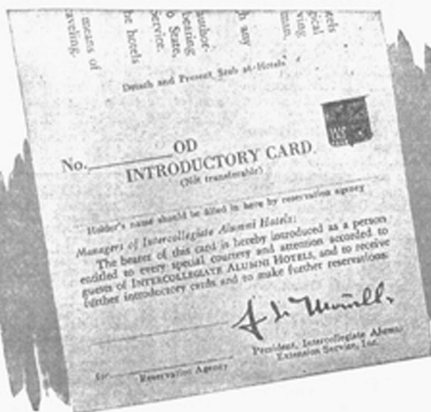
Through Life Insurance, with a comparatively small annual premium, you can build an estate of substantial size and effectiveness,—the proceeds payable at whatever time and in whatever manner you designate.

If interested, cut this out, write your name and address across it, mail to Inquiry Bureau, 197 Clarendon Street, Boston, Mass., and receive our booklet, "This Matter of Success."

John Hancock
LIFE INSURANCE COMPANY
INCORPORATED IN MASSACHUSETTS

A.C.

Our Sixty-four Years in Business



This
will
introduce!

INTERCOLLEGIATE ALUMNI HOTELS

- | | |
|----------------------------------|---------------------------------|
| Albany, N. Y., Hampton | New Brunswick, N. J. |
| Amherst, Mass., Lord Jeffery | Woodrow Wilson |
| Atlantic City, N. J., President | New Haven, Conn., Taft |
| Baltimore, Md., Southern | New Orleans, La., Monticello |
| Berkeley, Cal., Claremont | New York, N. Y. |
| Bethlehem, Pa., Bethlehem | Executive Club Bldg. |
| Boothbay Harbor, Maine | Willow Barre, Pa. |
| Sprucewood Lodge (summer only) | Mallow-Sterling |
| Boston, Mass., Bellevue | New York, N. Y., Warwick |
| Chicago, Ill., Allerton House | New York, N. Y., Westbury |
| Chicago, Ill., Blackstone | Oakland, Cal., Oakland |
| Chicago, Ill., Windermere | Philadelphia, Pa. |
| Cleveland, O., Allerton House | Benjamin Franklin |
| Columbus, O., Neil House | Pittsburgh, Pa., Schenley |
| Detroit, Mich., Book-Cadillac | Providence, R. I. |
| Elizabeth, N. J., Winfield-Scott | Providence-Biltmore |
| Fresno, Cal., Californian | Rochester, N. Y., Powers |
| Greenfield, Mass., Weldon | St. Louis, Mo. |
| Jacksonville, Fla. | New Hotel Jefferson |
| George Washington | San Francisco, Cal., Palace |
| Lexington, Ky., Phoenix | Scranton, Pa., Jernyn |
| Lincoln, Neb., Lincoln | Spokane, Wash., Desert |
| Miami, Fla., Ta-Miami | Springfield, Ill., St. Nicholas |
| Minneapolis, Minn., Nicolet | Syracuse, N. Y., Syracuse |
| | Urbana, Ill., Urbana-Lincoln |
| | Washington, D. C., Willard |

If you travel to any extent you should have in your possession at all times an introduction card to the managers of Intercollegiate Alumni Hotels...It is yours for the asking...It assures courteous attention to your wants and an extra bit of consideration that frequently means much.

Your alumni association is participating in the Intercollegiate Alumni Hotel Plan and has a voice in its efforts and policies. At each alumni hotel is an index of resident alumni for your convenience in looking up friends when traveling. Other desirable features are included.

If you wish an introduction card to the managers of Intercollegiate Alumni Hotels, write to your Alumni Secretary or use the coupon.

INTERCOLLEGIATE ALUMNI EXTENSION SERVICE, INC.

INTERCOLLEGIATE ALUMNI EXTENSION SERVICE, Inc., 369 Lexington Ave., N. Y. C.

Kindly send me an Introduction Card to the managers of Intercollegiate Alumni Hotels.

Name _____ College _____ Year _____
 Address _____
 City _____ State _____

Funeral arrangements were in charge of the Roscoe Enloe Post of the American Legion in Jefferson City, the post named for the twin brother of the deceased, who was killed in France during the Argonne Drive. Robert was a second lieutenant in the 130th Machine Gun Battalion, 35th Division. His twin brother, Roscoe, was killed at his side in the Argonne.

Enloe was with the Prudential Life Insurance Co. of Tulsa.

B. Denny Davis, born February 17, 1884, at Woodruff, Mo., L.L.B. '08, an attorney of Kansas City for 21 years, Phi Delta Phi, Theta Kappa Nu, now order of CofD, died on November 30, 1929, at Albuquerque, N. M. He was associated in the practice of law with Wm. F. Woodruff. He leaves his widow, formerly Mary Louise Nagel, A.B. '08, and a son, Carl Denny Davis, 13 years old, both of the home, 216 S. Main St., Independence; his parents, Mr. and Mrs. Thomas J. Davis, two sisters, Miss Martha and Miss Lora L., a brother, Thomas J., Jr., of Kansas City, and two other brothers, A. D. and Walter M., of Weston, Mo.

Dr. V. C. Vaughan, 78, eminent scientist and educator, formerly Dean of the School of Medicine, University of Michigan, who received the honorary degree of L.L.D. from the University in 1923, died in Richmond, Va., on November 21, 1929.

Edwin A. Garrett, age 20, freshman of Paragonia, Arkansas, and enrolled in the College of Engineering, died at his rooming house, 711 Hitt St., on November 21, 1929. He was the son of James Edwin Garrett, C.E. '86, Civil Engineer with the State Highway Commission of Arkansas with offices in Little Rock.

Miss Arlene Herr, freshman in the University last year, Delta Gamma, daughter of H. E. Herr of Hollywood, Calif., died there on December 3, 1929, following injury in an automobile accident on November 30, in Los Angeles.

Thomas Holdsworth, L.L.B. '14, of Independence, Mo., died there on June 3, 1927, and his father died there on April 6, 1928, according to word just received from Mrs. H. H. Page of Independence.

Andrew J. Smith, L.L.B. '81, Attorney of Kansas City, died at his home in August, 1929.

William B. Rogers, 23, Trenton, Mo., a student in the University and student assistant to the late Dr. Henry D. Hooker, shot and killed himself on November 2, 1929.

Dr. O. Dwight Clark, age 33, A.B. '21, later a graduate of Jefferson Medical College, Philadelphia, died on August 31, 1929, at the home of his parents near Unionville, Mo. Dr. Clark spent a year as an interne in Panama and there met and married Miss Mayna Rae Getchel. They spent a year in South America later returning and buying an interest in a hospital in Fayette. He again went to Ecuador and for more than three years had been in the interior doing the surgical work for a Gold Mining Company. On the road home to visit his parents he became ill from sarcoma.

Dr. J. T. Craig, born in Ghent, Ky., in June, 1850, who was graduated early in medicine and surgery from the Missouri Medical College, associated with the State University, died in his chemical manufacturing plant at Liallall, Chile, on October 12, 1929. He was Division Surgeon of the Wabash Railroad from 1874 to 1879. He held the chairs of the Practice of Medicine and Clinical Surgery in the College of Physicians and Surgeons in the medical department of the University of Kansas. Besides the widow, who was Miss Marie Richards of Kansas City, and Kentucky, there is a son, a dentist in Kansas City, and another son, who is in the Bank of Boston, Buenos Aires.

Dr. E. W. Allen of the Department of Agriculture, Washington, D. C., who received the degree of Doctor of Laws from the University last June, died of heart disease on November 11, 1929, in Chicago.

PHI BETA KAPPA SELECTS JUNIOR FIVE

William Benjamin Miller, St. Joseph; Willis Moore, Butler; Frances Vivian Noel, Paris; William H. Goodson, Liberty; and James A. Finch, Cape Girardeau, were designated as the Junior five members of Phi Beta Kappa at a recent meeting. Final election will be held in June.

The Liberty, Missouri High School was awarded the Phi Beta Kappa High School trophy on the basis of the grades made the past year by graduates of the school who were at the time freshmen in the University. The students were Eleanor H. Goodson, Ivan C. Clay, Margaret Withers, and Martha E. Lightburne.

William and Eleanor Goodson are children of Dr. William H. Goodson, A.B. '03, A.M. '05, M.D. '06, and Mrs. Goodson, A.B. '04, Liberty; Margaret Withers is the daughter of Mrs. Ethel Massey Withers, A.B. '03, Liberty; and James A. Finch is the son of Jas. A. Finch, former student of

Cape Girardeau. These students are all members of the Hope O' Tomorrow Club.

H. B. Altmstedt, professor of Germanic Languages, was elected president of Phi Beta Kappa for the year. Harold W. Rickett, Vice-President, and Mrs. Louise Trenholme, Secretary-Treasurer.

CLASSNOTES

Dr. Albert J. McCulloch, B.S. '81, M.L. '90, Professor of History and Political Science, Albion College, Mich., has written a book which is just off the press "UPPER MICHIGAN AND ITS PROBLEMS." Dr. McCulloch married Miss Isabelle Winslow, A.B. '03, in 1908. They have a son, Robert, nineteen, and a daughter, Margaret, seventeen.

Isidor Loeb, B.S. '87, M.S. & L.L.B. '90, Dean of the School of Commerce and Finance, Washington University, St. Louis, visited here recently and was a speaker at the Round Table Club.

J. T. Keller, '88, Sigma Nu, is a member of the staff of the St. Louis Post-Dispatch, and lives at Creve Coeur, Mo.

Louis Thellman, S. B. '85, M.S. '89, Cameron, Mo., has been appointed Superintendent of the Missouri Reformatory for Boys at Beaufort, Thellman was superintendent of the public schools of Breckinridge for twelve years, and served as state food and drug inspector in the administration of Governor Baker.

Burton Thompson, B.S. '92, one of the organizers of the Missouri football team, and member of the first team in with the West Jersey Corporation, 208 Broad St., Elizabeth, N. J. He writes that he was overjoyed at the victory over Kansas and in commenting on the Columbia Tribune clipping in reference to Sam Anderson. Mr. Thompson stated that he believes Sam would have made an All-Star team had he played these days.

Geo. W. Brace, Law '92, Stephens Medal, Tulon Literary, Phi Delta Phi, Circuit Judge, Montrose, Colo.

Wm. D. Lockwood, M.D. '80, Athenaeum Junior Model in Medicine, graduate of the Rockport, Mo., High School, is a Physicist, 4504 65th St., S. E., Portland, Oregon. He married Miss Lucy A. McDonald of St. Joseph, Mo., in '99. They have a son and daughter.

Henry J. Gerling, M.L., L.L.B., Phi B.K. '94, M.L. '96, Sigma Alpha Epsilon, Phi Beta Kappa, acting superintendent of Public Schools, St. Louis, was elected President of the Missouri State Teachers' Association, at their 67th annual Convention in St. Louis recently. He succeeds Dean M. G. Neale of the School of Education.

Other officers elected were Miss Amelia Knoder, Monticomey City, first vice president; G. E. Dills, Chillicothe, second vice president; J. P. Hodges, St. James, third vice president.

J. F. Taylor, Kennett; Miss Jessie Vils, Rolla, and Byron Coatsy, Kirksville, were new members elected to the executive board. Next year's convention will be held in Kansas City, Nov. 12, 13 and 14.

Among the resolutions adopted was one urging that Gov. Henry S. Caulfield call a special session of the legislature to meet here forthwith to effect re-commodations of the State Survey Commission which would benefit education institutions in the state.

John S. Borer, B.L. '95, Attorney and former Prosecuting Attorney of Hinchey county, St. Joseph, Mo., has been appointed commissioner of the Kansas City Court of Appeals.

Walter H. Ficklin, B.S. '86, with the Houghton Mills Co., Chicago, and Mrs. Ficklin, visited here recently. He is the son of Joseph Ficklin, formerly professor of mathematics and astronomy in the University.

Joseph S. McIntyre, B.S. & B.P. '87, Attorney, St. Louis, has been elected Breckinridge Grand Inspector General of the Red-
(Turn to page 116)

Hear SOUND PICTURES

at their best



*Sound equipment
will make or mar
the finest pictures.*

*You are sure to enjoy them
in theatres using the Western
Electric Sound System.*

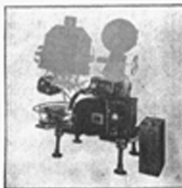
"Do they have good Sound reproduction in that theatre?" people now ask in addition to the familiar "What picture is playing tonight?" and "Who is the star?"

Western Electric, with fifty years' experience in making telephones and other Sound reproducing equipment, was the pioneer and is the natural leader in the development of Sound Picture apparatus.

The country's leading picture producers record their talking pictures with the Western Electric Sound System exclusively. Four thousand theatres all over the world have, by installing it, shown their faith in its superior reproduction.

Your enjoyment of the show depends upon the sound equipment the theatre uses. If it's Western Electric you will hear sound pictures at their best.

*Sound mechanism
(dark portion)
which assures
clear, natural
tone. Made by the
masters of your
telephone.*



*In small neighborhood theatre and big city palace
Western Electric Sound equipment is drawing the crowd.*

Western Electric
SOUND  **SYSTEM**

THOMAS J. TALBERT
Columbia, Missouri
Governor of the Missouri-Kansas-
Arkansas District 1929



Thomas J. Talbert, Chairman of the Department of Horticulture, of the College of Agriculture, of the University of Missouri, was elected District Governor of the Kiwanis Clubs in a convention of the clubs, of Missouri, Kansas, and Arkansas District held in Hot Springs, Arkansas, October 26, 1929.

Professor Talbert has been prominently connected with the work of the Kiwanis Clubs since 1922. During 1927 and 1928, he was lieutenant-governor of the District for Division I. He has attended the District conventions regularly for the last seven years, as a delegate or a trustee.

For the last three years Professor Talbert has been delegate from the local club at the International conventions, held in Milwaukee, Seattle, and Memphis. At Milwaukee and Seattle conventions he was one of the leaders of the discussions-conference programs. For the year 1928-1929 he was a member of the International Committee on Agriculture.

Professor Talbert received his degree of B.S. in Agriculture from the College of Agriculture, of the University of Missouri in 1912. While a student, he served the University as student assistant in Horticulture for two years, 1912-13. In his last year of college work, 1913, he was made deputy state survey inspector, a newly-created office. He received the degree of A.M. from the University in 1927.

He served as extension horticulturist for the College of Agriculture, of the University, and pursued graduate study at the University of California in 1919-20. From 1920 to September 1922 he was superintendent of Farmers' Institute and Extension Schools, Kansas State Agricultural College, Manhattan, Kansas. Mr. Talbert was appointed Professor of Horticulture and Chairman of the Department of Horticulture, of the University of Missouri, in the fall of 1922 and has since held this position.

His recent activities have been: Secretary of the Missouri State Horticultural Society, 1922-23; national secretary Gamma Sigma Delta, 1925-26; member of the legislative committee of the Missouri State Teachers' Association, 1924-26.

He is our good friend! He is an asset to the University and to the State.



GEORGE HELM FRANK BIRR
Alumni Patronize Alumni Advertisers

this Rite in Missouri, covering the south-west of the Mississippi River and south of Mason and Dixon's Line, with the exception of the State of Delaware. James W. Skelly, B.S. in C.E., B.S. in E.E., is Secretary of the Missouri Rite in St. Louis.

Walter C. Goodson, LL.B., '30, Attorney of Mason, Mo., was recently elected President of the Board of Control of the Lincoln-Lawrence College at Hannibal.

P. Lloyd Lewis, B.S. in E.E., '30, whose home when a student was in Oregon, Mo. District Manager since 1918 of the Warner Electric Co., Kansas City, is now Manager of one of the recently organized divisions of that Company, with factory headquarters in St. Louis.

John C. Hall, LL.B., '31, Sigma Nu, President of the St. Louis Building & Loan Ass'n., was recently elected President of the Missouri State League of Building and Loan Associations.

C. H. Willoughby, B.S. in Ag., '31, is Professor of Animal Husbandry, College of Agriculture, University of Florida, Gainesville.

Charles P. Palmer, LL.B., '32, is raising deer on his farm near Sturgeon, Mo., and recently sold three to Forest Park in St. Louis.

E. N. Mosler, '32-35, Cassville, Mo., member of the Missouri Tax Commission '23-24, has been appointed assistant to the Secretary of Agriculture, Washington, D. C., by secretary A. M. Hyde.

Bamber Croy, '33-35, has written another novel, CONEY ISLAND.

J. A. Hamrick, B.S. in C.E., '34, is with the State Road Dept. of Florida, with headquarters at Leesburg, and asks that all Missouri alumni coming his way call on him.

Dr. A. Isadore Anderson, A.B., '34, 1205 Biltmore Bldg., Kansas City, is the subject of C. E. McFried's story under the cap-

WHEN YOU MOTOR TO COLUMBIA

Be sure to come to alumni motorists headquarters, leave your car here for attention, enjoy our service, and let your mind rest easy with the assurance that your car is safe and ready for your trip home.

The Missouri Motor Co.

Jack Taylor's Place
"Heavy" Thomas, Assistant

ALUMNI MOTORIST HEADQUARTERS

NEWS OF YOUR FRIENDS AND OURS

C. E. Kane, B.J., '15, is editor of the Illinois Central System magazine, Chicago, 517 Central Station. He married Miss Stella E. Moore of St. Joseph, Mo., in 1920. They have three dandy boys, Chas. E. Jr., six Richard Stephen, four, and James Hubert, two. They are all coming to Missouri. Charlie gets out a dandy magazine. He's a fine chap, too.

Felix E. Lacey, B.S. in Ag., '26, Alton Gamma Ebeo, prominent in all student activities, and Mrs. Lacey, formerly Willie Crews, of Columbia, R. S. in Ed., '26, Phi Mu, are living in Chicago, 6122 Kimbark Ave. Mrs. Lacey is with Swift and Co. We're always glad to see the Lacey's in Columbia.

E. H. Logan, B.S. in C.E., '25, Delta Tau Delta, Chi Chi Chi, Engineering Club, is with the Missouri State Highway Commission, Kansas City, address 3529 Gillham Road. He is a son of Mr. and Mrs. E. A. Logan, 567 Collins, Columbia. The Logan family has an outstanding University record.

Lae C. Lorier, A.B., '15, LL.B., '17, Beta, Phi Alpha Delta, QEBH, Student President '36, is an Attorney in Carrollton, Mo., and a frequent visitor on the campus. We enjoy seeing him. He made an outstanding record as attorney for the Highway Commission. We like him. Ernest S. Lyman, B.S. in E.E., '30, B.E., '33, Kappa Sig, Tau Beta Pi, QEBH, is Valuation Engineer, Western Union Telegraph Co., 195 Broadway, New York. He attended the game at Lawrence, and the New York alumni party. He's a real alum.

Francis G. Chance, A.B. and B.S. in Eng., '29, is associated with his father, A. Fisher Chance, in the Chance Manufacturing Co., Centralia, Mo. That's a great factory at Centralia. Look it over when you stop over in the Prairie Queen.

J. Wesley McAfee, LL.B., '26, Attorney of St. Louis, visited with us recently. He's a fine fellow and a staunch supporter of the University. We're always glad to see "Wes" here.

Jackson Scholz, B.J., '20, K. A., Tri Chi, Mystical Seven, Quo Vadis, famous Missouri track star, three times a member of the American Olympic Track Team, visited in Columbia for several weeks to do special writing. He motored to Columbia from New York and later on motored to California and from there to Hawaii for the winter. The Co-op will be selling Jack's book, so write us for what you want. Have you ever read his "Split Second"? It's good. Order a copy today. You would have this book in your library.

Ted J. O'Sullivan, A.B., '27, Phi Gamma Delta, prominent in athletics, 433 Lathrop Bldg., Kansas City, is the author of one of the leading articles in the September issue of the INSURANCE Magazine. Ted's a real football coach at Kansas City and making a good record. He tells his boys who come to the University to trade at The Co-op.

Harry Viner, Ag., '20, Quo Vadis, Mystical Seven, Football, '18, '17, '19, Basketball '17 and '18, Investment Banker, National Biscuit & Mortgage Corp., Humboldt Bldg., Houston, Tex. He married Miss Alleen Danise Ross of Beaumont, Tex., in 1925. Mr. Viner's niece, Dorothy and Lillian Viner of Tulsa, are enrolled in the University. Fine girls!

The Co-Op

CHARLES E. BARKSHIER, Mgr.
Alumni Patronize Alumni Advertisers

Coach Edwards' Basketball Squad Ready for Big Season in New Field House

George Edwards, No. 23, basketball coach, and his excellent squad, are ready for the big season ahead. In addition to the ten conference games the University of Missouri basketball team will play at least six non-championship contests during the coming season. There is a possibility that at least two more non-conference games will be scheduled.

The season will open with the Tigers entertaining Central College of Fayette, December 13, in Rothwell Gymnasium, the last intercollegiate contest to be played on the Rothwell floor. When the team plays its next home game, January 13, the new field house will be ready.

Other non-conference opponents will include Kansas in an exhibition game at Convention Hall in Kansas City, December 21, Washington University and Creighton University. A trip into Iowa early in January is planned.

The schedule as arranged to date is as follows:

December 13—Central College at Columbia

December 21—Kansas at Kansas City

January 6—Washington at St. Louis

January 10—Iowa State at Ames

January 13—Kansas State at Columbia

January 18—Nebraska at Columbia

February 1—Oklahoma at Norman

February 4—Creighton at Omaha

February 8—Iowa State at Columbia

February 11—Creighton at Columbia

February 14—Kansas State at Manhattan

February 15—Nebraska at Lincoln

February 21—Kansas at Columbia

February 24—Washington at Columbia

March 1—Oklahoma at Columbia

March 5—Kansas at Lawrence

With the completion of the field house the University will be able to take care of those who wish to see the basketball Tigers in action for the first time in fifteen years. During past seasons in which prospects for a good team were bright it was necessary to divide the season tickets so that only one half of the holders could attend each game. Persons not living in Columbia dared not make the trip since there was only a slim chance of getting into the gymnasium. Among the general public there has been a gradual decrease in interest in the success of the basketball Tigers because of the lack of space.

Plenty of seats will be available in the future. A concrete balcony in the field house will seat 2,500. Stands are to be erected for 3,000 more persons if interest warrants it.

Another thrilling conference race is in prospect. Pre-season dope shows that all of the weaker teams have been considerably strengthened. It is doubtful if Oklahoma or any other team can escape with a clean slate.

Parker
FURNITURE CO.

Barton Robnett Tom McHarg

Alumni Patronize Alumni Advertisers

tion, GREAT MOMENTS IN MISSOURI VALLEY FOOTBALL as follows:

I've always thought, and still think, that Dr. Isadore Anderson is plenty husky enough to take care of himself in almost any situation, but occasionally there comes to mind that time after a hard ball game in Omaha when two giant Indians stepped up to Anderson, one on each side, and walked quietly with this widely known official to the dressing quarters.

The game was between the colorful Haskell Indians and Creighton.

Haskell won 16 to 7. There had been a close play along the side lines. Dr. Anderson, the umpire, had been near the spot and was firm in his declaration that the Indian runner had not stepped on or outside the line. Some of the more rabid partisans of Creighton believed the umpire's ruling wrong. They were a trifle ill-tolerant as the game ended.

Place Your Order Today for

Our Guaranteed Home

Grown Flowers

For Flowers for Parties, Dances, Birthdays, etc., call

H. R. Mueller
MEMBER, F.T.O.
FLOWER SHOP

THE BEST

DAIRY PRODUCTS

We find it pays to advertise in the Alumnus.

The alumni and former students of the University in Columbia appreciate the support given their magazine, The Alumnus, by the Columbia business men.

The Central Dairy appreciates this business and we do everything we possibly can to cater to our friends among the alumni and former students.

CENTRAL DAIRY

"Dot" Sappington and Clyde L. (Brick) Shepard Proprietors

"Mother May We Have More"

Quickly a mighty Indian, six feet six and 25 pounds of him, stepped to the side of Dr. Anderson.

"I'll take care of 'em, Doc," said "Tiny" Roebuck, the powerful Indian tackle, who afterwards became a fighter in the ranks of heavies. Tom Stillman, Roebuck's running mate in the tackles play, kept step with Roebuck on the other side, and no partisan footballer saw fit to cross the

American and Annex Hotels

(Absolutely Fireproof)

7th & Market, 6th & Market
ST. LOUIS, MISSOURI

On direct car line with the Union Station and surrounded by all the leading places of amusement.

500 rooms with all the conveniences of a home. Bath (tub or shower) in every room. Running ice water. Telephone. In fact, everything to make you comfortable and fee lat home.

Our "nation-famed" cooking at reasonable prices will attract you to our cafe.

E. Berkley Martin, Manager

Memorial Tower

Home Economics Building and the addition to same now under construction, the new University Hospital, Methodist Girls' Dormitory, Boone County National Bank Building and many others are "Simon Built."

SIMON
Construction
Company

314-18 Guitar Building
Columbia, Missouri

Field House Nearing Completion Dedication in February

C. L. Brewer, Director of Athletics, who has worked so vigorously for our field house advises that it is nearing completion and there is every indication that it will be finished and ready for the regular winter season. The stone work is completed. The steel and roof have been erected and there remains to be done only the finishing of the walls and the roof and inside equipment. The concrete balcony is completed except for the seat board. The two entrances to Rothwell Gymnasium are in, one leading to the main floor of the gymnasium and one from the lower level to the basement as a service entrance from the lockers, dressing rooms, and showers of the gymnasium.

The entrance foyer with the main entrance on the east and a smaller entrance on the west to Rothwell Gymnasium is completed except for the floor and paneling of the two sides. This entrance foyer will not only serve as an entrance way both to the balcony and the main floor, but will be equipped with ticket offices and entrances for handling crowds while the two sides will be lined with panels and trophy cases where all of the team pictures, trophies, etc., will be kept on permanent display.

Two tiers for the basketball court are just being placed while the playing floor itself is being built in St. Louis and will be shipped here and installed in time for the basketball season. The main floor will be of a combination of clay and loam and calcium chloride giving a delightful surface for any and all games equivalent to the best of conditions outdoors. Baseball, football, tennis and any of the sports can be played on this floor. Track will probably appreciate the Field House more than any other of the intercollegiate sports as there will be a splendid track, two laps to the quarter and a seventy-five yard straight-away for sprints and hurdles.

It is expected that track will receive a great impetus both in numbers trying out for the team and in quality. The Big Six Conference has already awarded the Annual Conference indoor meet to Mansuri and this will be held in the Field House, March 7-8. It is also planned to start an annual indoor meet for high schools and also an open indoor meet or relay carnival for colleges, giving three big features in track. The opening basketball game is January 15 with the Kansas Aggies. It is quite likely that this will be the first contest in the new build, ing.

It is planned to have a big dedication night sometime during the winter, but this probably will not be arranged until sometime in February after everything is completed. The arrangement in the building will accommodate between 6,000 and 7,000 for basketball games and an equal number can be accommodated for track events and other activities.

No building on the campus has aroused so much interest as this Field House and it is felt that it is going to be one of the most useful buildings that we have and one that will be appreciated by all of the students as well as by alumni and friends who come to Columbia

Dorn-Cloney Laundry Co.

Managed by the Milburn Boys

Alumni Patronize Alumni Advertisers

both of this triangle as they walked silently but watchfully on their way to the showers.

Farrest C. Donnell, A.B. '94, LL.B. '07, St. Louis, was elected President at a recent meeting of the 64th annual convention of the Missouri Sunday School council of Religious Education.

Ira G. Walburn, A.B. '04, B.S. in E.E. '06, A.T.O., and Mrs. Walburn, formerly Miss F. Carey Montjoy, Columbia, and their son, fifteen and daughter, seventeen, are living in Ozarksburg, Pa., where Mr. Walburn is Secretary of the Farmers' Mutual Fire Insurance Co.

John N. Edy, B.S. in C.E. '05, C.E. '06, city manager, Berkeley, Calif., and his office is indebted to him for a copy of his sixth annual report which is a most interesting one. He is certainly to be commended for his wonderful work in Berkeley. Those interested in the city management forum of University should certainly write for a copy of this report.

Mrs. Herbert G. Hesse, formerly Inez Gordon, Arts '03 '05, Kappa Alpha Theta, graduate of the Chalmers, Mr., High School, and Lindenwood College, and Mr. Hesse, and their daughter, Mary Jean, six, are living in San Antonio, Tex., 2855 Main Ave. Mrs. Hesse's father, Dr. David Gordon, attended the University.

Edward A. Sotlar, A.B. & Life Certificate '05, Sigma Chi, is an Attorney, 339 Commerce Bldg., Kansas City.

Wm. E. Snodgrass, LL.B. '05, A.B. '07, S. A.L., Attorney, Warrensburg, Mo., and a brother of Mrs. Frank W. Dearing of Columbia, has two mighty fine sons, James W., eighteen, and Wm. E. Snodgrass, II, twelve. James W., the oldest boy, was voted the most popular student of the Warrensburg High School, due to his fine sportsmanship, citizenship and interest in school affairs. His father is on the Board of Education. His brother, Wm. E., II, is in school in Warrensburg.

D. H. McFarland, A.B. '05, is with the American City Bureau, Tribune Tower, Chicago.

Chas. N. Martin, B.S. in E.E. '05, Tau Beta Pi, Sigma Xi, is an automobile dealer and proprietor of the Martin Motor Co., 178 St. Louis St., Springfield, Mo. He married Miss Aya D. Withers, '04 of Columbia in 1907. They have two sons, Chas. K. Jr., 20, and Edwin L., eighteen and two daughters, Lois, sixteen and Mary Ann, ten.

THE PLA-HOUSE

in Columbia

Headquarters for Bowling

No trip to Columbia is complete without a visit and a game at

THE PLA-HOUSE

Locust St., west of Missouri Theatre

Exchange National Bank

Established 1865

Built on Service and Safety

The Tiger and The Campus Tiger Barber Shops

for
STUDENTS

and for
ALUMNI

THE TIGER on So. 9th St.
THE CAMPUS TIGER
south of Jesse Hall

Always Alumni Headquarters.

Alumni are coming to Columbia this fall and winter in greater numbers than ever before, not only on week-ends but on every day of the school year. Alumni wanting reservations should notify us immediately. Our service is at your command.

The Daniel Boone Tavern

A distinctive Hotel

Our dining room facilities in the main dining room and in the Coffee Room are second to none.

We have an adequate Banquet Room in the basement.

We employ in every department many students who are working their way through the University. They are instructed to cater to the Alumni and former students.

Write, wire, or phone me when you want accommodations at the Tavern.



DANIEL BOONE TAVERN

Alumni Headquarters

F. W. (Ramrod) Leonard
Proprietor

31 MISSOURI GIRLS IN BEAUTY CONTEST

Six to Be Selected by Artist for Savitar, University Yearbook

Thirty-one University of Missouri women students are listed as candidates for beauty queens of the 1930 Savitar, student yearbook. Five from Kansas City and seven from St. Louis are included. Photographs of all of the candidates will be made and six will be selected by an artist of national repute for the beauty section of the yearbook. The candidate list:

Alpha Chi Omega—Miss Ann Kahl, 3500 Dodder, St. Louis.

Alpha Delta Phi—Miss Maxine Elliott, 3274 Marshall, St. Louis; Miss Helen Heurtl, Barkburnett, Tex.; Miss Mary Louise McCurry, Sallisburg; Miss Ester Will, 626 Kings Highway Parkway, St. Louis.

Alpha Gamma Delta—Miss Adella Sherd, Columbia.

Alpha Phi—Miss Esther Morris, Warrensburg; Miss Lorene Korner, Caruthersville; Miss Ellen Cairns, Caulterville, Ill.

Alpha Epsilon Phi—Miss Dorothy Viner, Tulsa, Ok.

Chi Beta Epsilon—Miss Elizabeth Hood, 3205 Monroe, Kansas City.

Chi Omega—Miss Frances Parker, Danville, Va.; Miss Jewell Wheeler, Ibsartsville.

Delta Delta Delta—Miss Estelene Reed, 1699 East Sixty-fifth, Kansas City; Miss Gladys Salter, Wichita, Kan.

Delta Gamma—Miss Mary Jo Arpe, 2048 Connecticut, St. Louis; Miss Viola Miller, 6348 McPherson, St. Louis.

Gamma Phi Beta—Miss Betty Mary Beckler, 26 East Fifty-third, Kansas City; Miss Charlotte Holloway, 4106 Searcy, Kansas City.

Kappa Alpha Theta—Miss Marjorie Leaman, Oklahoma City; Miss Margaret Moore, 739 East Thirty-fifth, Kansas City.

Kappa Kappa Gamma—Miss Elizabeth Jeffrey, 2043 Utah place, St. Louis.

Phi Mu—Miss Dorothy Andri, 2004 Chippewa, St. Louis; Miss Laura Mae Brown, Centralia.

Pi Beta Phi—Miss Margaret Waters, Vandallia; Miss Catherine Sharp, Macon; Miss Virginia Gault, Columbia.

Zeta Tau Alpha—Miss Hazel Smith, Houston, Ark.; Miss Ruth Brandau, New Orleans.

A fine group of beautiful girls. Dorothy Belle Flanagan, R. 2, Kansas City, is making a real name in the Journalism world. She has a news in the current number of the NEW YORKER and a story "INTERVIEW" in a recent issue of LIBERTY. Miss Flanagan is spending the winter in Santa Fe, N. M., 530 El Camino del Monte Sol, with her sister and brother-in-law, and also that she sees the Glenn Hills, also Mr. and Mrs. I. B. Parsons and Mrs. Billie Ware Nelson. Miss Flanagan will write a story about The Co-op school in those days.

Homer Gray, '07, author of many famous novels, has just written another entitled CONEY ISLAND. He and Bob Hill, editor of THE ALUMNUS, a complimentary copy with this inscription, "I don't expect you to read it. Just put it on the center table so that others will know you are cultured." Write us for a copy of Homer's new book; every alumnus should have in his home a complete set of all of Homer's books. Write us for these books.

Fredericall's

H. A. 1907Y

R. J. POERST

Maud Potter, A.B. '05, is living in Niland, Imperial Valley, Calif., according to word received from Dr. Peter Potter.

Lindley G. Coleman, B.S. in K.E. '06, is in the Oil Sales Dept., H. L. Doherty, 99 Wall St., New York, N. Y.

Miss Hazel H. Walter, B.S. in Ed. '06, formerly of Northome, Mo., is living in Glendale, Calif., 311 N. Jackson.

Ray Hood, L.L.B. '02, Attorney, 712 Joplin National Bank Bldg., Joplin, Mo., received the 23rd degree by the Supreme Council of the Scottish Rites for the Southern Jurisdiction of the U. S., at Washington, D. C., on October 25, 1929. Dean Walter Williams of the School of Journalism received the degree at the same time.

Dr. Thomas G. Orr, A.B. '07, M.D. '10, Surgeon, Medical Arts Bldg., Kansas City, had an exceptionally fine hunting trip in Arizona last month, bringing in one of the biggest bears ever killed in that section. He visited with Dr. Pickard in Taos, N. M., while on his hunting trip.

William W. Barton, '08, is associated with Gen. H. Burr & Co., First National Bank Bldg., Kansas City.

Fred H. Switzer, L.L.B. '08, graduate of Shelbyville, Mo., High School, is an attorney, Nels Esperson Bldg., Houston, Texas.

Miss Anne Douglas, '08-12, formerly visiting nurse in Columbia, and a recent graduate of Columbia University, visited her mother, Mrs. Mattie Douglas in Columbia, recently, and is now in Houston, Tex., where she is supervisor of Red Cross nursing, residence, 2806 Smith St.

Dr. Edwin Lee Miller, A.B. '08, medical certificate, Beta, QEBH, football '05, '06, '07 and '08, Captain the latter two years, baseball '07, is a surgeon, 800 Hialeah Bldg., Kansas City. He married Miss Faith Foster, B.S. in Ag. '09 in 1910. They have three fine sons, Bill, nineteen, who is a freshman in the University and member of the freshman football squad, John, fifteen, and Dick, fourteen.

H. P. Rusk, B.S. in Ag. '08, M.S. '11, Alpha Zeta, Farm House, is Chairman of the Department of Animal Husbandry, University.

Alumni in Columbia and everywhere, who enjoy quality printing and binding and who enjoy having their printing work done by those who enjoy doing good work, should by all means remember.

E. W. STEPHENS PUBLISHING CO.

Where Hitt Hits Broadway
Columbia, Mo.

E. W. Stephens, A.B. '67, A.M.
'70 L.L.B. '05, President

E. Sydney Stephens, A.B. '03,
Vice-President

Frank W. Dearing, '09, Sec-
retary-Treasurer

President Stratton D. Brooks was elected Vice-President of the National Association of State Universities at their meeting in Chicago recently. He was the honor guest at a dinner given by the Chicago Alumni Association at that time.

Dean F. R. Mumford was re-elected a member of the executive committee of the Local Grant College Association in Chicago at its recent meeting.

Governor Henry S. Caulfield and the members of his family were here for the Oklahoma game on Thanksgiving Day. William Hinchbold, Attorney of Kansas City, and President of the Parents' Association, was seated with the Governor. It is always a pleasure to see Governor Caulfield here, also Mr. Hinchbold whose son is on the football squad.

Donald C. Cox, Maryville, was first place in the State Interscholastic Peace Oratorical Contest held in Jefferson City, recently. His subject was "The Indictment of War" which received the unanimous decision of the judges. The second place was awarded to Henry C. Loukin of Westminster College, son of U. W. Loukin, President of the State Teachers' College at Maryville.

W. J. BabMans, instructor in the University, is traveling extensively in Europe, according to word received from him by Dean Walter Miller of the Graduate School.

Chi Alpha Chi here was affiliated on November 23 with Alpha Sigma Phi, national social fraternity, organized in 1845 at Yale. The active members of Chi Alpha Chi are: Leven T. Palmer, Parsons, Kan.; Alvin Isomer, St. Louis; Robert Hardy, Pittsburgh; Walter Freerk, St. Louis; Norman Falkenhauer, St. Louis; James Walling, Webster; Wallace Stewart, Pittsburgh; Charles Nathan, Merrittown, N. J.; Robert Clays, 305 West Thirty-seventh street, Kansas City; Howard Moss, Hillsboro, Ill.; Robert Lawry, Columbus, Kan.; James Shepard, La Plata; Roy Taylor, St. Louis; Vernon Myers, St. Louis; Herman Walker, Areadia, Kan.; John Eberhart, Windsor, and Bradford Pyle, Columbia.

Bredelle Jessa, A.B. '16, A.M. '17, is assistant professor of French and Italian in the University, 285 Jesse Hall, residence, 530 Hillcrest Ave.

Earl W. Henderson, B.S. in Ag. '22, Anselma, Gamma Alpha, Football, Basketball and Baseball, Glee Club, Poultry Judging team '20, assistant professor of poultry husbandry in College of Agriculture, will leave February 1 for Ames, Ia., where he will have charge of the poultry department, Iowa State College. Mr. Henderson married Miss Esther L. Logan of Des Moines, Tex. in 1918.

L. A. Weaver, B.S. in Ag. '10, Prof. of Animal Husbandry, had charge of the University Buroc Jersey barrows, which won practicing every award in their class at the American Royal Livestock Show recently.

Dr. J. W. Conway, M.D. '01, Professor of Veterinary and Comparative Medicine in the University, was the honor guest at a dinner given on his birthday anniversary by members of his Department and was presented with a watch.

Victor Barth Clothing Co.
In the Center

I. A. BARTH

Ninth and Broadway

Alumni Patronize Alumnus Advertisers

city of Illinois, Urbana. He married Miss Edith E. Hartley, B.S. in Ed. '06, L.S.V., in 1911. They have two daughters.

John Snow, B.S. in Ag. '08, with the Mid-west Savings & Loan Ass'n., 715 So. Charles St., St. Louis, visited the alumni office recently.

C. H. McClure, B.S. in Ed. '09, A.M. '11, is member of the faculty of the State Teachers' College at Warrensburg, Mo. He married Miss Mary Laidlaw of Parry, Mo., in 1927. They have a son and four daughters.

Hamilton L. Brown, B.S. in Ag. '09, is extension dairyman, College of Agriculture, University of Florida, Gainesville.

Mrs. Margaret J. Hulse, formerly Margaret Jardine, Medicine '09, formerly acting Superintendent of Nurses, Parker Memorial Hospital, is living in New Britain, Conn., 56 Garden St. Mrs. Hulse's home was formerly in Calverville, Mo.

Stella E. Steele, B.S. '09, A.B. '10, who taught last year in Winthrop College, Rockhill, S. C., is associate professor of household science at Georgia St. College for Women, Milledgeville, Ga., this year.

H. J. Trowbridge, A.B. '09, Beta Theta Pi, is a retail lumber dealer, The Knapsha Lumber Co., 251 A. Kings St., Keosauha, Wis. He married Miss Elizabeth Whitaker, in 1917. They have a daughter, Jean Elizabeth, five, and a son, Harold J., Jr., three. W. H. Cox, Law '06, is an Attorney, 1113-18 Corby Bldg., St. Joseph, Mo. He married Miss Alice A. Henry of St. Joseph in 1902. They have one son and two daughters.

Sam Bridges, '10, Ed., coffee manufacturer, Pine Bluff, Ark., visited the alumni office recently on his way to visit in Kansas City and to attend the alumni dinner and the game in Lawrence.

C. C. Ryan, Jr., A.B. '10, LL.B. '12, Attorney at Kansas City, was a speaker at the Presbyterian Church here recently.

Pleasant T. Cole, B.S. in Ag. '10, Sigma Xi, Delta Theta Sigma, is Agricultural Commissioner with the St. Louis R. W. Railway Co., Tyler, Tex.

John C. Atterbury, A.B. '11, L.L.B. '13, banker, Madison, Mo., and Mrs. Atterbury, visited here recently with Mr. Atterbury's brother.

Dr. J. A. Cooper, A.B. '11, former President of the Knox Falls, R. D., College, has moved to Kansas City, Mo., 525 E. Armorel.

The Rev. E. H. Eckel, Jr., formerly Arts '11, Rhodes Scholar from Missouri, 1910-1913, has resigned the rectory of St. Paul's-on-the-Hill, St. Paul, Minn., which he has held since February, 1928, and accepted the rectory of Trinity Episcopal Church, Tulsa, Okla. He will enter upon his new duties Jan. 1st. Mr. Eckel married Emily H. Pope of St. Paul in 1927. During this past summer they attended the reunion of old Rhodes Scholars at Oxford and toured in England, France, and Scotland, beginning Dec. 28th, the address of the Rev. E. H. Eckel, Jr. will be 12 East 24th St., Tulsa, Oklahoma.

Oscar E. Riley, B.S. '11, A.B. '12, Secretary of the New York Alumni Association, is advertising manager of the Wideman & Co., Inc., Investment Bankers, 26 Broadway, New York. He married Miss Catherine A. Palmer. They have four children: Robert, Amory, Dexter, Marion Lee and Rosemary.

Virgil W. Surber, B.S. in E.E. '11, Tau Beta Pi, Eta Kappa Nu, Stebbins Club, announces a new office as Ohio Manager for the Indiana Engineering and Construction Co., of Ft. Wayne, handling all work in Ohio out of the Akron office. Mr. Surber has been in business in Akron since the war and has handled the following large jobs: Scoville Army Supply School, N. Hill Masonic Temple, Baseball Grand Stand, Firestone Tire & Rubber Co., Akron State Normal Training School and Wilds Creamery, Kent; High School and Church of Christ, Medina; Masonic Temple, Robertson. His office is in the Federal Oil & Gas Bldg. He was one of the leaders on our Memorial Stadium.

Lloyd Thayer, A.B. '11, Anselm, Gloucest., is Chairman of the Department of Biology, University of Mississippi, University P. O., Miss.

Sumner N. Blossom, '12, formerly of the Kansas City Star, is now on the staff of the American Magazine, 250 Park Ave., New York City.

Dr. C. W. Bressler, A.B. '12, is with the

Synodical Trading Co., 240 Madison Ave., New York, N. Y. It was good to see him again.

Dr. Arthur Knudson, A.B. '12, professor of biochemistry, Albany Medical College, Albany, N. Y., attended the alumni meeting and the game in New York City recently. "Sunday Vahlbansky," '12, A.T.O., T.N.E., is an Attorney, 6228 Linsell Bldg., St. Louis, Mo. He married Miss Grace Miller in 1921. They have a daughter, Kathryn, and a son, Jack.

Wesley C. Whitehouse, A.B. '12, and Mrs. Whitehouse, formerly Bertha E. Libby, and their two sons, Alfred O., fourteen, and Wesley Clay Jr., twelve, are living in King City, Mo., where Mr. Whitehouse is pastor of the First Christian Church.

H. H. Kinyon, A.B. and B.J. '12, of Albert Frank & Co., Advertising, 165 Broadway, New York City, represented the University of Missouri on the occasion of the 175th anniversary of Columbia University in New York City on October 25-31.

H. M. McPheters, '12, Insurance specialist, St. Louis, visited the alumni office recently.

Arthur C. Papp, Ag. '12, is commercial editor of the Prairie Farmer, W. Washington Bldg., Chicago. He attended the Ag. alumni party during the National Dairy Show in St. Louis.

Harry P. Seward, B.S. in Ag. '12, Hardin, Mo., visited here recently. His daughter, Marjorie, is enrolled in the College of Arts and Science.

E. L. Brockner, A.B. & B.S. in Ed. '13, Track, '12, Phi Alpha Delta, Mystical Service, President student body '12-13, is superintendent of the Olympia, Wash., City schools. He married Miss Sadie E. Vaughn of Pullman, Wash., in 1916. They have one son.

Sam J. Dalton, B.S. in C.E. '13, A.T.O., Y.N.E., is Maintenance Engineer, Miss. State Highway Dept., Jackson.

H. A. Fountain, B.S. in E.E. '13, formerly of Cleveland, is now President of the Tulsa, Okla., Terminal Storage and Transfer Co., residence, Royal Route 2, 2111 E. 26th St.

Geo. J. Klein, B.S. in M.E. '13, is chief operating engineer, A.E. Stealy Mfg. Co., Inventor, Ill. He married Miss Mary Whitney, former student '09-12, in 1914. They have two sons, George, Jr., thirteen, and Donald, ten.

Richard A. Smith, L.L.B. '10, cum laude, O. E. B. Phi Delta Phi, Order of Conf. Theta Kappa Nu, is an Attorney for Maryland Casualty Co., 322 Walnut St., Philadelphia, Pa.

Bernard H. Meeker, B.S. in Ed. '11, A.B. '12, A.M. '13, Phi Delta Kappa, Phi Club, graduate of the Perryville, Mo., High School, now Principal of the Blount Intermediate School, 2351 Enright, St. Louis, was a member of the Summer Session faculty here. He represents the alumni of the School of Education on the Board of Directors of the General Alumni Association. Mrs. Meeker, formerly Martha Morris, attended the Summer Sessions here in '18, '20 and '21. They have one son, Robert, seven, and a daughter, Mildred, four. Mr. Meeker presided at the big meeting of

Jackson-Finley Grocery Co.

The safe place to trade

Phone 207 8th & Cherry Sts

VISITING ALUMNI

When you motor to Columbia you'll find our station conveniently located. Just tell the student who waits on you that you're an alumnus and you'll get some real service and attention.

Our comfort station is approved by the State Board of Health.

Our Bureau of Information is 100 per cent. reliable

Alumni Motorist Headquarters

Alumni Management, Student Labor

PROCTOR SERVICE STATIONS

No. 1—Price and Broadway

No. 2—U. S. 40 and Range Line

A. M. Cowan, B.S. Ag. '20, Mgr.

Lindenwood, the beautiful college for women, founded in 1827, St. Charles, Missouri. You will be interested in knowing something about this historic woman's college. Courses of interest to every student. For catalog apply to Dr. John L. Roemer, Box M. A. 29, St. Charles, Missouri.

In St. Louis



Hotel Lennox

9th and Washington

St. Louis' newest and smartest hotel. In the heart of business district. 400 rooms, every one with bath and shower. Dining room. Coffee Shop. Garage service.

400 ROOMS — \$3 to \$6
BATHS



Hotel Mayfair

8th and St. Charles

In the center of theatre and shopping districts. Floor lamps, fans, circulating ice water in every room. The quiet, refined atmosphere of an exclusive club—an hotel of distinction. Dining room. Coffee shop. Garage service.

400 ROOMS — \$3 to \$6
BATHS



Hotel Kings-Way

West Pine at Kingshighway

Opposite beautiful Forest Park. Near bus, street car and motor highways. 20 minutes from downtown. Club breakfasts, table d'hôte dinners. Room rate \$4 for two. Special rates for permanent guests.

 **Heiss Hotel System** 
Owners and Operators

the alumni and former students of the University in St. Louis on Nov. 14, during the week of the Missouri State Teachers' Association meeting, the annual meeting of the alumni of the School of Education and election of officers.

Major Richard Tindall, A.B. & B.S. '11, and Mrs. Tindall, formerly Frances Clayton Mitchell, A.B. '16, and their daughter, Helen, are in Houston, Tex., where Major Tindall is with the National Guards, Marine Corps Band.

Max, N. Beeler, B.S. '14, B.S. in Ag. '15, of the Capper Farm Press, Topeka, Kan., visited the University the other day and we had a good visit with him. We are always glad to see Max.

Dan Griswold, B.S. in Ag. '14, A.M. '15, Alpha Zeta Sigma Xi, is in the Agricultural Investigation Dept., Agricultural College, N. D. He married Miss Ben Duncan, A.B. '15, in 1916. They have two sons.

Warren W. Fuqua, B.S. in Ag. '14, extension course, Missouri City, Mo., was the guest of honor and principal speaker at a recent banquet given by the Block & Briddle Club of the College of Agriculture, N. D. He married Miss Margaret Dorner of Columbia.

Laurence M. Hyde, A.B. '14, LL.B. '16, is a C. E. Attorney, Princeton, Mo.

C. E. Mangrove, B.S. in Ag. '14, A.M. '16, Gamma Sigma Delta, was his Ph.D. chemist for the N. Dakota Agricultural College, Fargo, in an sabbatical leave and is with the Division of Agricultural Biochemistry, University Farm, St. Paul, Minn., where he expects to be until next year.

James Hand, Jr., B.S. in Ag. '15, Phi Kappa Psi, Chi Chi Chi, Gamma Sigma Delta, is a mechanical engineer in St. Louis. He married Miss Theresa Moore of Edwards, Miss., in 1921. They have one son, James, III.

Mrs. John C. Mills, '15-16, Kirksville, Mo. State President of the American Association of University Women and delivered a talk to the Columbia group recently.

John R. Cannon, LL.B. '12, Attorney, Kansas City, O., Venator, Captain '11-12, is the subject of the following article by the Kansas City Star sports editor:

"All in the day's run: Fame is a fleeting thing.... Years today and gone tomorrow... It is the man who has had his to oblation and all that sort of thing.... Jack Cannon used to be a power in Kansas City and the Missouri Valley's particular sections of the tennis world.... He was one of the great.... But now.... is just Jack Cannon, attorney and member of a golf club.... That is, as far as the local tennis world is concerned.... It is a custom almost universal at the moment that a Missouri tennis man of some celebrity and find few and welcome entry into the inner circles and events of their particular sport.... Just as Coen was playing at Rockhill.... James Cole, B.S. '12, Wheatland, Wyo., enjoyed a visit recently from his father, Dr. J. R. Cole, '17, of Columbia, and his sister, Miss Virginia Cole, '25, A.M. '26, who teaches in Park College.... Parkville, Mo.

T. H. Douglas, LL.B. '12, Attorney, Bolivar, Mo., visited the University recently and made arrangements for his son, Elvin E. Douglas, to attend school here. Elvin will enter the University next year, and he has two other sons, one a senior and one a sophomore in High School. A daughter in the 7th grade, and one son who is attending in a state school are also planning to send all of them to the University. How is that for keeping up the tradition in the Hope 'O' Tomorrow Club?

Charles King Snelling, B.S. in Ag. '12, is District Agent for the Sinclair Oil Co., Leawards, Fla.

Miss Minnie Snelling, B.S. in Ed. '11,

A.B. '12, A.M. '18, is head of the Biology Dept., Winthrop State College for Women, Rockhill, S. C., home address 818 College Ave.

Mrs. Melvin Moss, formerly Opal See Snelling, '06-16, and her children are living in Rockhill, S. C.

Merwin A. Wilder, A.B. '12, has moved from Cambridge, Iowa, to Hudson Bldg., Tulsa, Okla., where he is in the oil business.

Harry Todd, C.E. '11, contractor, Hutchins-Kay, is editing the ALUMNUS after a copy of TOMAHAWK RIGHTS, the most recent book of Hal G. Everts, Mr. Everts went on a duck hunting trip with Harry Todd and the editor in Hutchinson a few years ago. He is a dandy fine writer.

William A. (Billy) Brees, Ag. '14, Kappa Sigma, quarterback on the football team of 1911, is a big, busy business man these days in Detroit, Mich., who was recently made president of Motor Accounting Company, subsidiary of General Motors Corporation. He has three fine children, Billy, twelve, Dorothy, ten, and Hazel, eight, to mention of who he is still "little Billy Brees." The reference to his six calls to our memory the story written about him by C. E. McBride of the Kansas City Star relative to a game of 1911. The story follows: "The splendid physique and the fast spirit of the Kansas captain (Ammons) was a potent factor in the game. One of the first plays in the game was dashed for the Tiger goal. He passed every secondary defense man of the Missouri eleven and only the two Billy Brees, a mere minute of a football player, stood between him and the goal. Fast down the field went Ammons, gaining at every stride. Across several lines of time he raved, tearing down on Missouri's defense in a quantity of minutes. Gulliver running into a Brownie. Would Brees get him? Missouri said YES; Kansas answered NO, Missouri was right. Brees threw himself into the powerful Kansas center, and after a struggle of a run of 36 yards Ammons arose and ran back to his position, but Brees failed to get up. He had defended the Missouri goal with valor, but was badly bruised. Time was taken out and a substitute was called up and down the side lines, ready to go in if needed. But Brees went back to his post after two minutes rest. The Tiger rovers were all close in shouting their praise to the little chap."

J. Harrison Brown, B.S. '14, A. P. Green Fire Brick Co., is back in his office in Mexico, following a tour of Europe.

Russell L. Deacon, J. D., former Phi Delta Theta, Phi Delta Phi, Mystical Seven, Attorney, Cape Girardeau, Mo., State Senator from that District, was the guest of honor at a banquet by the business and professional men of Cape Girardeau recently.

F. L. Daley, B.S. in Ag. '14, A.M. '15, of the Department of Agronomy, Kansas State Agricultural College, Manhattan, and Mrs. Daley and their son, Philip, visited Prof. and Mrs. H. A. Krawacki recently.

R. Crosby Kemper, A.B. '14, Phi Delta Theta, Chi Chi Chi, football, track, president of the City Bank, Kansas City has won a \$25,000 bond issue of the Closed Mortgage Bond issue, covering the new University of Missouri Field House, payable serially from 1920 to 1929 out of the athletic revenue of the University. This bond issue will be issued and approved by the Board of Curators of the University of Missouri, and for the past three years the net surplus of the Athletic Department has been in excess of \$50,000 a year. It has been estimated that the new field house will add \$10,000 or \$15,000 a year in receipts to the present revenue. The field house will be located immediately east and adjoining Rothwell Gymnasium.

The building will be planned and all interior activities and general recreation at the University. The building will be built of native stone with an arch steel roof and will be entirely fireproof. Because of the splendid record of payment of the University of Missouri obligations there is an excellent demand for these bonds among University of Missouri Alumni and students. They can be obtained through the Bond Department of the City Bank of Kansas City, Kansas City, Missouri, to yield the investor 6%. Carl Fuchsa, A.B. '12, powerful Missouri athlete, is in the bond department of the City Bank and has been in Columbia selling field bonds recently.

Walter R. Roberts, A.B. '14, formerly of Central, Mo., director of music at Win-

throp College, Rock Hill, S. C., and Mrs. Roberts and their daughter, Mary Gene, visited recently.

C. P. Talbot, B.S. in M. E. '11, engineer for the National Supply Co., Shreveport, La., and Mrs. Talbot, formerly Mabel R. Prather, B.S. in Ed. '16, and their daughter, Zella Lynn, visited Mrs. Talbot's mother and sister recently.

George D'Ellefrance, Jr., '15, Delta Tau Delta, OREHO, Quo Vadis, Basketball '13, '14 and '15, (Captain '15) Baseball, '13, '14 and '15, President of the Chicago Alumni Association, '24-25, is with the U. S. Forest Service, Chicago. His brother, Joe, is a sophomore in the University and on the football squad.

Alexander F. Stephens, '15, recently accepted an appointment as Agricultural Agent for the Wabash in St. Louis, succeeding to an announcement by P. F. Schwenker, director of Agricultural Development for the Wabash.

Dr. Sarah R. Kelmam, A.B. & Medical certificate '13, is practicing in New York, 12 W. 72nd St., and attended the alumni dinner there recently.

Leslie C. Good, '18, district agent for the Equitable Life Insurance Co., Evansville, Ind., and Mrs. Cook, formerly Sybil Whitte, '13-18, have been visiting Mrs. Cook's parents, Mr. and Mrs. T. W. White, the Columbias.

Miss Eudora V. Adams, B.S. in Ed. & A.B. '16, who has been on a year's leave of absence, studying in the University of California, Northridge, was awarded a master's degree in May, is back in Santa Ana, Calif., teaching mathematics.

Mrs. Wm. S. Armstrong, formerly Ethel Lull, B.S. in Ed. '16, is teaching in Shamrock, Okla.

Harriet Moulton, B.S. in Ag. '16, Sigma Nu, Mystical Seven, is with Marsh and McLennan, Insurance, 164 W. Jackson Bldg., Chicago.

F. H. Shelleby, B.S. in Ag. '17, is in the agricultural division of the U. S. Tariff Commission, Washington, D. C.

Chas. Howell, B.S. in Ag. '17, Vocational Ag. teacher, North Mo., was at the University of Nebraska there, visited the alumni office recently.

Mrs. Edwin P. Babbs, formerly Geraldine M. Thompson, B.S. in Ed. '17, Kappa Kappa Gamma, and Dr. Robert E. Babbs, '15, Physician, and their two sons, Edwin F. Jr., eight and Selden Thompson, three, are living in Minneapolis, 4817 Moran St.

Belmont Farley, B.S. in Ed. '18, Phi Delta Kappa, formerly director of publicity, State Teachers' College, Kalamazoo, Mich., has been appointed assistant director of the Division of Publications, National Education Association, 1209 Street, N. E., Washington, D. C. He will specialize as member to departments of the Association, affiliated state and local associations, allied groups, and magazines. It is the purpose of the Association to have closer contact between educational workers and the magazine field. Mr. Farley married Miss Elsie Greenlee, B.S. in Ed. '17, in February, 1924.

Harry E. Olmstead, B.S. in Ed. '18, Phi Delta Kappa, formerly of Marlinton, W. Va., and her husband, and Albert E. Pierce, B.S. in M.E. '13, and Mrs. Pierce, formerly Frances Jarvis, '13, of Okmulgee, Okla., where Mr. Olmstead is District Superintendent, Charles Oil & Gas Co. visited the alumni office recently. Mrs. Pierce and Mrs. Olmstead are Columbia girls.

J. K. Roach, '18, formerly of Linn, Mo., now practicing law in St. Louis, was recently appointed assistant Attorney-General by Attorney General Shartel. Roach will work in connection with administration inheritance tax.

Twilight Aultman, Jr., '18, and Mrs. Aultman, formerly Dorothy Loran, B.S. in Ed. '23, and their little daughter, Dorothy Ann, who has been visiting Mrs. Aultman's parents, Mr. and Mrs. C. L. Loran, Columbia, have come to Oklahoma City where they will make their future home, residence 102 W. 17th St. Mr. Aultman is an Engineer with the Oklahoma City Water & Light Co.

James I. Hyrd, A.B. '18, is a retail iron business, 206 E. Missouri St., Charleston, Mo.

L. A. Dalton, B.S. '18, A.M. '22, Agricultural, 303 Press Bldg., Hutchinson, Kan., and Mrs. Dalton, formerly Olive Dalton, B.S. & B. in Ed. attended the New York alumni activities recently.

Archibald B. Klein, Arts '18, Theta Psi.

(Continued on page 125)



Burger-Baird engravings are the kind that arouse favorable attention - particularly if they are made from Burger-Baird drawings - that is to be expected from the finest and largest plant west of Chicago.

Burger-Baird
Engraving Co.

10th and WYANDOTTE
KANSAS CITY, MO.



College Headquarters

Centrally located in the heart of the business and theatrical districts, the Hotel Baltimore is indeed "the convenient hub of the city's activities." The largest hotel in Kansas City, the Baltimore is equipped to answer every need—500 comfortable, fire-proof rooms priced from \$2.00 to \$7.00, a Coffee Shop, a Grill, a Cafe all serving the famous Baltimore quality foods, Independent of any other local hotel, the Baltimore stands ready to offer you every convenience and every comfort.

*Meet your friends at the Baltimore.
Make it your headquarters while you
are in Kansas City.*

Hotel Baltimore



Artists, Designers
Photo-Engravers

*For All Printing
and Advertising Purposes*

914 Pine St.

St. Louis, Mo.



Pleasing the Public

*On the Stage—It's Talent
On the Wabash—It's Service*
(Apologies to Chesterfield)

As extraordinary talent on the stage is rewarded by the applause of an appreciative audience, so the excellent service on the Wabash Railway is acknowledged by the continuous patronage of experienced travelers.

FAST WABASH SERVICE

between

ST. LOUIS

and

KANSAS CITY

SPLENDID SERVICE

between

ST. LOUIS

and

CHICAGO

FAST WABASH TRAINS FROM ST. LOUIS

8:47 A. M.	12:29 P. M.
Ar. Chicago 3:45 pm	Ar. Chicago 6:30 pm
9:52 P. M.	11:50 P. M.
Ar. Chicago 7:05am	Ar. Chicago 7:35 am

FAST WABASH TRAINS FROM CHICAGO

11:30 am	9:55 pm
Ar. St. Louis 6:00 pm	Ar. St. Louis 7:05 am
3:00 pm	12:05 Midnight
Ar. St. Louis 10:30 pm	Ar. St. Louis 7:41 am

Four Trains Leave St. Louis Daily

9:03 am	10:02 pm
Lv. Delmar Boul. 9:17 am	Lv. Delmar Boul. 10:20 pm
Ar. Kansas City..4:35 pm	Ar. Kansas City..7:30 am
2:00 pm	11:55 pm
Lv. Delmar Boul. 2:15 pm	Lv. Delmar Boul. 12:10 am
Ar. Kansas City..9:30 pm	Ar. Kansas City..7:30 am

Four Trains Leave Kansas City Daily

9:00 am	9:30 pm
Arrive St. Louis	Arrive St. Louis
Delmar Boul. ...3:50 pm	Delmar Boul. ...7:05 am
Union Station ..4:30 pm	Union Station ..7:30 am
1:30 pm	11:55 pm
Arrive St. Louis	Arrive St. Louis
Delmar Boul. ..8:38 pm	Delmar Boul. ...7:05 am
Union Station ..9:00 pm	Union Station ..7:30 am

H. E. WATTS, Passenger Traffic Manager, St. Louis

WABASH

—SERVING SINCE 1858—

OFFICIAL MISSOURI HOTELS

Where Tigers Meet

The hotels listed on this page have been designated as the official headquarters for Missouri men and women.

Members of the faculty, alumni, and of the student body are invited to avail themselves of the hotel facilities while traveling throughout the state. These hotels are not selected at random, but with the purpose of selecting those which can best serve the college graduate.



Hotel Connor at Joplin,
H. S. SIMON, Manager



The New Leeper at Chillicothe
Berr T. Clark, Sr., Manager



Hotel Marquette, Cape Girardeau,
H. F. TUPPER, Manager



The Mark Twain at Hannibal,
Louis J. Huegel, Manager



Missouri Hotel, Jefferson City, Mo., Walter B. Simpson,
Managing Director

Hotel Frederick

Boonville, Mo.

Guy Million, Manager

For further information communicate with the Alumni Office, 217 Jesse Hall, Columbia.