

Mizzou

The Newspaper Issue of the *Missouri Alumnus* Magazine
September-October 1979

COLUMBIA SUMMER 9

Collegetown USA 2

The Quad 4

Your Voice 6

Campus Map 12

Econ Wiz 14

Searching 16

Big Mo 18

'We Can Win' 20



College Town USA

MIZZOU is for you. Each year the Alumni Association of the University of Missouri-Columbia publishes *Mizzou*, this 24-page newspaper for all former students of the Columbia Campus.

There are more than 100,000 of us. And we're a diverse lot. Most live in Missouri, but nearly half of all *Mizzou* alumni live outside the state. Most are men, but an ever increasing number of graduates are women. In fact, women now are enrolling at a faster rate than men. *Mizzou* alumni come in all sizes and in all age groups, but younger alumni are comprising a larger and larger share of the total group. A third of *Mizzou*'s alumni have graduated since 1969, half since 1962.

More diversity occurs in the professional interests of the alumni body. With 14 academic divisions and nearly 100 departments, the Columbia Campus is one of the most comprehensive universities in the world. *Mizzou* turns out engineers, agribusinessmen, teachers, journalists, lawyers, doctors, nurses, community workers, home economists, foresters, accountants, historians, scientists, veterinarians, and many other kinds of professionals, all who retain strong feelings for their schools and colleges.

But there is one thing that all alumni have in common: They are former students of the University of Missouri-Columbia. Most alumni

made friends across divisional lines. Most took courses in more than one school or college; many were involved in interdisciplinary courses. And the value of the degrees of all alumni prospers as the reputation of the total Campus prospers.

The one organization in which such diversity can be encouraged and the commonality channeled is the Alumni Association of the University of Missouri-Columbia. The Association is an independent, not-for-profit corporation, with headquarters in the Alumni Center on Stadium Boulevard. This building, constructed with alumni gifts, truly has become a home for alumni and a living room for the Campus.

The Association publishes the *Missouri Alumnus*, a quarterly magazine, for members only (see page 6). Tourin' Tiger vacations are reserved for members, as are charter football trips, merchandise discounts, and library privileges.

And, most important of all, membership is a tangible, visible, and effective means of supporting your alma mater.

If you are not already a member of the Alumni Association, join today. *Mizzou* is for you. □

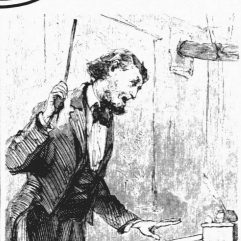
Mizzou is the newspaper issue of the Missouri Alumnus magazine. The Missouri Alumnus is published four times a year — November-December, January-February, March-April, and May-June — by the Alumni Association of the University of Missouri-Columbia, 129 Alumni Center, Columbia, Missouri 65211. Steve Shin, editor; Caro Baskin and Larry Boehm, associate editors; Karen Farnir, class notes editor; Designer: Paul Fisher, professor of journalism. Copyright © 1979 by the Alumni Association of the University of Missouri-Columbia.

MARCHING MEMORIES

Are you the Marching *Mizzou* tuba player who tripped over something other than the Light Fantastic during the halftime of *Mizzou*'s clash with Nebraska in 1952? If so, we've got you on film.

The band office has gathered more than 30 years' worth of films from dusty shelves and dark lockers. Now that they're organized, the films are available to any alumnus who wants a peek at past glories of Marching *Mizzou*. The oldest is from 1948.

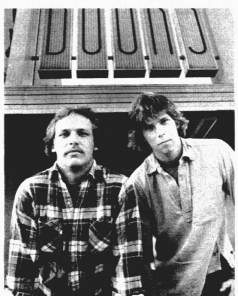
The band, by the way, has been around since about 1908, though in those days it was an ROTC group. Women weren't allowed until the '50s.



GENUINE "PROFESSIONAL GENIUS"

If you've got a spare \$56, you can get a mail order degree from Columbia's newest "educational" institution. The Ebert Professional Institute consists of a Columbia post office box and brochures of the "degree mill" will send you.

President and founder Leland Ebert offers an assortment of degrees, from "professional certified" all the way up to "professional genius," based on the number of hours a "student" has worked in a given field. Advertisements have appeared in national magazines, including *Harper's*, *Atlantic Monthly* and *Automotive Age*.



A.J. Sundstrom/Columbia Missourian

ROBBER / JOGGER FOILED, or HEROES FOR A DAY

A daring robber clad in a blue jogging suit and white running shoes wasn't fleet-footed enough to knock off the Missouri Book Store, thanks to forestry senior Scott Groene, pictured at right.

The luckless bandit chose the first day of final tests last semester for his attempt, right after the 10:30 bell. The masked man pulled a gun on cashiers, who screamed. Groene jumped the jogger and tried to shake the gun from his hand, but eventually resorted to sinking his teeth into the robber's wrist. Another student, Mike Klutho, left, got into the action and the bandit was overcome.

Groene got a citation from the city for his courage and a \$100 check from bookstore executive Bob Pugh. "Not often does a college bookstore have a customer defend it," he said.

FUTURE FOR FLAT BRANCH

Consultants drawing up plans to redevelop Flat Branch say the project should dovetail the atmosphere and lifestyle of the University and the city.

Flat Branch, a 44-acre center-city tract that lies generally northwest of Campus is considered "blighted." It includes *Mizzou*'s power plant and other University property, totaling about 6 1/2 acres.

Plans include a civic center, hotel, general office buildings, a retail area, apartment complex and housing for the elderly — all interspersed with open spaces. Total cost is estimated at \$31.5 million.

University officials generally have applauded the concept of developing the Flat Branch area. However, legislative approval would be required before any University land could be sold to the city.

The area is bounded by Broadway, Sixth Street, Providence and Stewart Roads.

Yes, *Mizzou* is for me.

Name _____ Check Membership Desired: _____

Address _____ Annual \$10* _____

City _____ State _____ Zip _____ Mr. Mrs. \$12* _____

Class Year _____ Division _____ Life \$200* _____

Is spouse an alumnus? _____ Life Installments (consecutive annual payments of \$35) _____

Name _____ *A portion of your dues is allocated to your particular divisional alumni association: Agriculture, B.S.P.A., Engineering, Education, etc. _____

Class Year _____ Division _____

Be sure check is enclosed, payable to *Mizzou* Alumni Association, and mail to: Alumni Activities, 132 Alumni Center, Columbia, Mo. 65211.



IT'S THE ULTIMATE BY GEORGE!

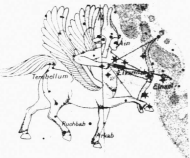
While the rest of the world's gone disco daffy, Columbia has managed to limp along all these years without any true adult discotheques. But all that should change within a couple of weeks.

Separated by only five blocks of Broadway, a former furniture store and a hardware store are metamorphosing into what each of their owners claim will be the finest disco in the Midwest. When Maxi's Ultimate Disco and By George make their simultaneous debuts, dancers will have to decide who wins what to date has been a contest of glorious descriptions.

Maxi's glass dance floor will light up your life with 80,000 watts, which along with fog machines producing waist-high clouds, should create an ethereal atmosphere.

George Terzopoulos, whose G&D Steak House on the Strollway has sold steaks and Texas toast more than a decade, says his new venture will have "an upper class atmosphere. People should dress suitably to come in here." By George will have a stainless steel dance floor surrounded by "infinity" mirrors and \$75,000 worth of flashing lights and sound equipment.

John Revolta—oops, Travolta—would love it.



STAR TREKKERS

The favorite pastime atop the Physics Building is peering at heavenly bodies. That's where the Labs Observatory offers its three telescopes for a closer look at celestial sights each Friday night. Astronomy students operate the scopes and tell visitors what they're seeing magnified 500 times. About 50 students and townspeople turn out each week.

FOR CANDY CONNOISSEURS

Sweet tooths think they've found paradise when they discover The Candy Factory, where owner Georgianna Lundgren offers 95 kinds of chocolates. She makes between 70 and 80 percent of the candies she sells.

Candy Factory chocolates are right up there with the best, such as See's on the West Coast and Cadbury in England, says admitted "chocoholic" Adrienne Marcus in her new book, "The Chocolate Bible."

Lundgren "has a sense of adventure with chocolate," says Marcus. In season, the candy maker covers fresh strawberries in what Marcus lovingly describes as "a pure rain of chocolate."

Frosted pretzels and chocolate-dipped bananas are favorites of Lundgren's customers.



LONELY & LEAFLESS

Is it a sign of early fall? Apollo has lost his fig leaf.

Poor Apollo was already lonely, being the only plaster cast to be left behind when the rest of the collection was moved to Pickard Hall from Jesse four years ago. The University had another casting in better condition, a museum curator explains.

But now injury has been added to insult. Employees found Apollo's fig leaf by his feet one morning. To accommodate his modesty and protect him from leering passersby, they turned him toward the wall. A taped-on real leaf will have to do until the plaster one can be re-affixed.

DORN-CLONEY THROWS IN THE TOWEL

When the last bits of the old Dorn-Cloney Laundry building are hauled away from its home on South Eighth Street, the new owners plan to build a two-level parking garage on the landmark's site.

Two students started a laundry on the main floor in 1891, which was later taken over by Dorn-Cloney. The laundry even had its own well on the site. But until about 1920, life upstairs was a lot more interesting than downstairs.

The second floor hosted boxing matches, lots of dances, and theatre productions. The dance hall business fell off when the Daniel Boone Tavern began competing with its ballroom about 1918.



Tom McGuire, Columbia Musician

FANTASY FRIENDS

Harold Carstairs is an English professor who uses poor grammar. Robert B. Goode's a hypochondriac and Verna Wormgier is a sweet lady but a backstabber underneath. They're all pretend people in the mind and through the voice of local disc jockey Larry Caringer, on his 4 to 6 p.m. daily show.

Caringer, BJ '69, has developed a following since he returned from the West Coast two years ago.

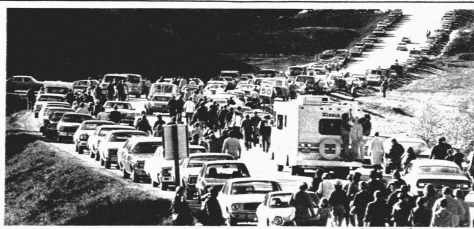
Verna fumbled her news assignment not long ago when she was sent to cover the return of the swallows to Capistrano. Goode owns a restaurant called "Something Fishy" (there's a real one named Fish 'n Friends) and has imagined himself Ayatollah Bob. Harold knows 971 languages and over 10,000 dialects.

"People call me at the station (KFRL) to talk to one of my friends, and the fantasy continues," says Caringer.

Belly Button Beer, brewed with fresh Missouri River water, is a sponsor of the program. One of Caringer's many voices, of course, does the commercials.

NO WALDEN POND

Walden Pond it isn't, but "the quarry" south of Campus is still the closest getaway. Students splash there whenever the weather's warm enough, and keep all those nooks and crannies well-explored.



Nick Kasper, Columbia Tribune

UNTANGLING TRAFFIC

Good news for football commuters! State highway department projects should help Columbia's busiest traffic circuit on homegame days and keep a few drivers' fuses from blowing. The Providence-Stadium Road intersection just northwest of Faurot Field is getting "free" right-turn lanes and a new signal system.

Work should be finished about the time of the first home game, Sept. 8.

Stadium Boulevard, which funnels fans off I-70 from points west, is being widened from two to five lanes from Broadway north to the interstate. Columbia residents will relish the change, even on just plain Saturdays. Completion time: late this year.

DISCOUNTS FOR ALUMNI

The University's concert series is expanding this season by adding a new dance series. Alumni are eligible for ticket discounts.

Musical offerings include the Vienna Chamber Orchestra, violinist Itzhak Perlman, flutist Jean-Pierre Rampal, and two of the world's best string quartets. The dance series features the Alvin Ailey Repertory Company. Write to Concert Series Ticket Office, 420 GCB, University of Missouri-Columbia, for more information.

A REAL JEWEL

The Gem Drug Co., whose fountain drew students, businessmen and farmers for more than 50 years, has blended its last matted disk and filled its final prescription. The call of the auctioneer sold the last items from the downtown landmark this summer, right down to the riding tack and veterinary supplies the store carried.

In recent years "Gem," anchor of the Guitar Building kittycorner from the courthouse, had purchased prescription files of several pharmacies that foresawed the Gem's own fate—a location where doctors no longer had their offices and parking was hard to come by. Like Hunts, Crown Drug, and Knight's Drug, to name a few.

The "Gem" opened a second location four years ago in Eastgate Plaza at the bottom of the Broadway hill. But the present owners, Harold and Deanne Earnest, say they miss the downtown bustle.

FRANCIS QUADRANGLE

Richard H. Jesse was at home when the huge, ornate electric chandelier next door in Academic Hall crashed to the floor, signaling the start of the blaze that would make the Columns the traditional symbol of the Columbia Campus.

An onlooker on that Saturday night in 1892 later wrote the University's president, "I can see you again with your tall form striding up and down in the snow and with a will and bearing that inspired confidence and hope out of despair, and hear you giving directions like Stonewall Jackson, with a spirit rising superior in the hour of battle and disaster."

And a disaster it was. The valuable collections of books and portraits in the library were lost. Only Switzer Hall and the President's home (now the Chancellor's Residence) remained, and the house survived only because brave students climbed to its roof and time after time put out fires. But out of the ashes, a greater University emerged. The quadrangle was created, its buildings today being called a fine example of late 19th Century academic architecture. Francis Quadrangle became a National Historic District in 1974.

Morris Frederick Bell was a self-trained architect from Fulton, who, in a 40-year span, did all the design work for State of Missouri buildings except the Capitol itself. As the unofficial state architect, he was a shrewd businessman and, perhaps, an even shrewder politician. Less than three weeks after the fire he submitted a plan that the Board of Curators adopted.

Missouri and Bell chose a quadrangle design, popular in the United States ever since Jefferson first used it at the University of Virginia. And, of course, the University of Missouri was the first state University in the Louisiana Purchase territory acquired by Jefferson.

In Bell's plan the Columns from the burned building were centered in the quadrangle. (A year later, the Board of Curators voted to remove the Columns, but an outcry by alumni saved them). Utilizing the President's house on the east and Switzer on the west, Bell added five new buildings. A replacement for Academic Hall was not included — lack of money prevented that — but space was allotted for it on the south.

The five buildings — Law (now Sociology), Chemical (now Pickard Hall), Biological and Geological (now Swallow), and Mechanic Arts, Physics and Engineering (now making up the engineering complex) were built for less than \$175,000.

Bell's problem was to design five separate buildings (one fire was not going to destroy most of the University again) that were related in appearance and also different from one another. Each building has about the same general mass as its neighbor and each is two stories. He further achieved harmony by aligning the buildings and using the same building materials throughout, a top-quality red brick, limestone, and slate roofs. The elaborate cornices and decorative window designs also help integrate the buildings. Diversity was obtained by varying the skylines and perimeters and using square, octagonal, and asymmetrical towers.

It is difficult to label the buildings after any special style; 1892 was a period of Latitudinarianism, a fancy word for doing your own thing. But it might be said that the buildings are designed in a very freely interpreted Queen Anne style of early 18th Century England that was enjoying somewhat of a revival in this country. Bell wasn't adverse to copying. Swallow Hall, for example, is almost an exact replica of a design found in a book, *Architectural Perspectives for Beginners*.

Bell also received a lot of help he probably wished he didn't have. Living on the construction site, Jesse had the opportunity to observe all the work. He was such an active observer that one wonders when he had time to govern the academic side of the University.

"Mr. Bell's attention should be called to the fact . . . the rooms in the Law Building resound with echo," Jesse wrote the Curators.

On Engineering: "It would certainly improve the light in the basement if these east windows had been deepened a foot."

On Swallow: "You should examine without failure the Museum and decide how on earth the elephant [Emperor, the prized, stuffed circus elephant saved from the fire] is to be gotten therein."

Only with Chemistry did Jesse seem pleased: "There is nothing in the west that will exceed it in useful arrangements and appointments."

Jesse also had general concerns about the quality of interior brick ("soft and indifferent"), landscaping, and the "water-closet" paper dispensers.

With or without Jesse's help, all the buildings, including Academic Hall (later named for Jesse) were completed by 1895. The legislature had appropriated \$250,000 for it in the spring of '92. David R. Francis was governor at the time, and the quadrangle later was named for him.

Bell submitted five plans for the quadrangle's main building. One, with an ornate square dome and wings connected by archways, was actually published. But then Jesse and the Curators attended the 1893 Columbian Exposition in Chicago. They became excited with a new fashion associated with Beaux-Arts

Classicism — domes, porticos, columns, balustrades, and statuary — and determined that Missouri should not miss this opportunity to be up to date. They sent Bell back to the drawing board.

The result was a prominent dome rising high above the base and a portico with Corinthian columns of cast iron. Originally, the building also included a balustrade and statuary: a pair of lions and two goddesses, Liberty and Justice.

When the entry was made to the National Register of Historic Places, the Quadrangle and the six buildings were called Bell's "supreme accomplishment."

Over the years, new buildings and alterations have been made to what came to be called the Red Campus, until there are now 18 buildings included in the Historic District. The new Journalism addition will make 19. Some of the additions have met with more enthusiasm from Quadrangle purists than others.

The last remodeling of a Bell structure was done in 1976 when the Chemistry Building was converted into the Museum of Art and Archaeology, a job that everyone agrees maintained the integrity of the old structure. Four of the other five buildings are in good shape. The exception is Swallow, which has been tuckpointed but needs extensive interior work.

The towers originally on Swallow were blown away in a severe wind storm in the early thirties. That may have been the same night the statues of Liberty and Justice vanished from atop Jesse Hall. One must assume, however, that the spirits of the two goddesses remain alive and well in the administrative offices below. □

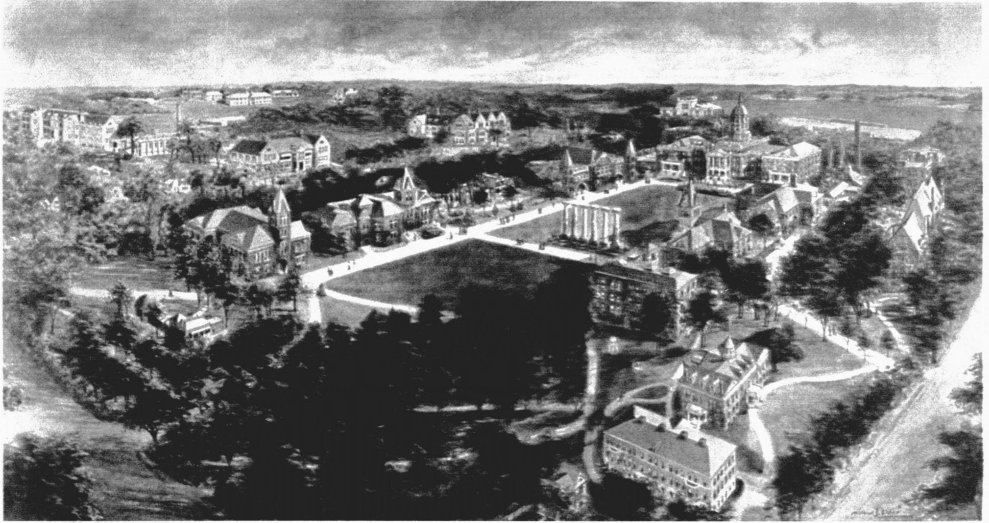
The primary source materials for this story were two works by Marian Ohman, the Campus's coordinator for the humanities. One was her master's thesis, Initial Study of Architect M.F. Bell, 1849-1929; His Contributions to the State of Missouri; the other, her doctor's dissertation, Latitudinarianism: An Architectural Theory and its Application in England and America From 1840 to 1895.



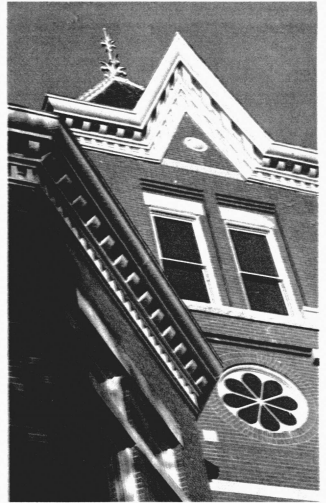
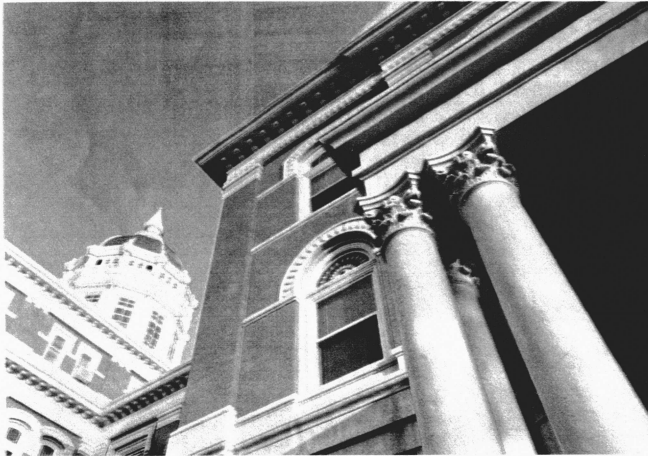
A detail from the Engineering building.

A LEGEND IN ITS TIME

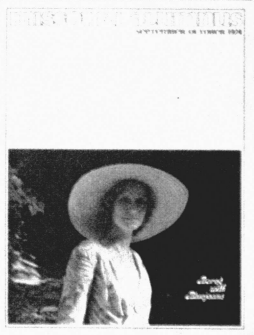
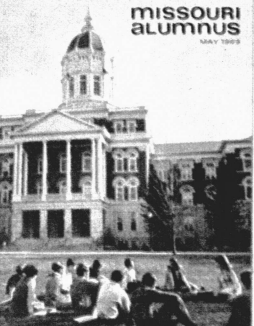
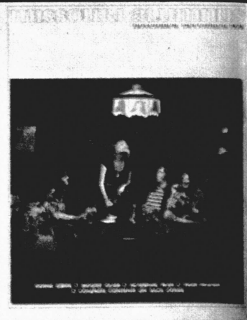
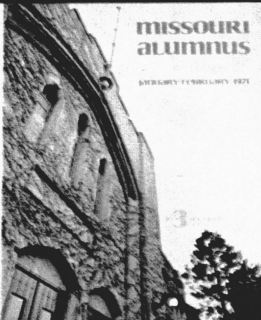
The quadrangle began in the early 1890s after fire destroyed the University's main building. Today, it is the Francis Quadrangle Historic District and called an outstanding example of academic architecture of the period.



The lithograph by Arthur J. Elder shows the quadrangle as it appeared in 1910. The new buildings on the bottom left were Parker Hall (1900) and McAlester Hall (1903). At right is a portion of the Chemistry Building (now Pickard Hall), and below the picture shows some details of Jesse Hall.



YOUR VOICE FRO

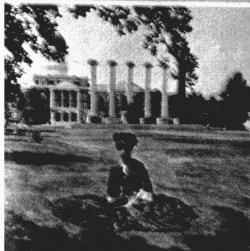


M THE CAMPUS

By Steve Shinn

MISSOURI ALUMNUS
SEPTEMBER 1912

MISSOURI ALUMNUS
SEPTEMBER 1912



MISSOURI ALUMNUS
A DIFFERENT STUDENT PRESIDENT



Missouri Alumnus magazine first came off the press in October 1912. There's nothing special about that date except that it marks the Mizzou periodical as one of the oldest alumni publications in the nation. And it provides another excuse to quote the French axiom, "The more things change, the more they stay the same."

Sixty-seven years ago editor Harry Ridings told *Alumnus* readers, "The mission is to tell men and women the things of interest about their alma mater and about their fellow alumni. This we shall strive always to do."

All editors apparently need — and receive — lots of advice. Ridings was no exception. "The short stories and squibs are the life of an alumni magazine," wrote one subscriber. "Long, drawn-out pieces stand trimming exceedingly well, without showing the effect in the least." A member of the Board of Curators, about as pontifical a University source as exists, advised a "sprightly" magazine.

Well, the *Missouri Alumnus* is still trying to follow both the purpose and the reader advice contained in that first issue. And we still are receiving counsel on how best to meet our goals. Only now, part of the advice has been organized into a working Alumni Association Communications Committee whose members provide written critiques of each magazine and determine its policies annually at a meeting on Campus. The committee is made up of 24 successful graduates of the School of Journalism who volunteer their time.

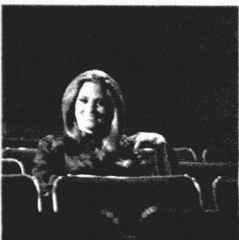
Such volunteerism is the essence of the strength of the Alumni Association. The Association has been around for a long time in one form or another. But it wasn't until 1936 that it was formally chartered by the state of Missouri as an independent, not-for-profit corporation and not until 1952 that a membership-dues structure was instituted.

Earlier, the *Alumnus* was sold by subscription. Dues were instituted at about the same time the University administrators decided that alumni might be something more than a pain in the alma mater. This realization, plus financial support from the University, enabled the Alumni Association to become the catalyst for Mizzou alumni to maintain a dynamic, two-way

BY L. SPILLER



MISSOURI ALUMNUS
ISSUED 11 APRIL 1971



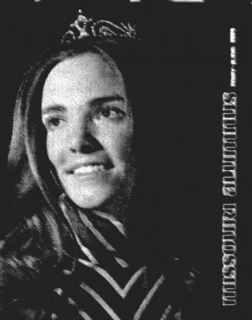
MISSOURI ALUMNUS



MISSOURI ALUMNUS
ON A DATE IN A HURRY
BY THOMAS AND MARY
CLARA WILSON
AND OTHERS



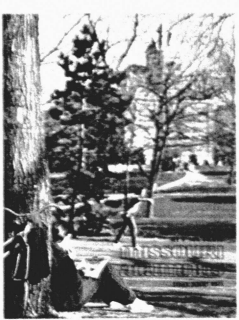
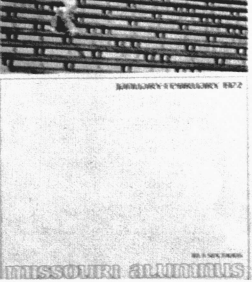
MISSOURI ALUMNUS
MARCH 1957



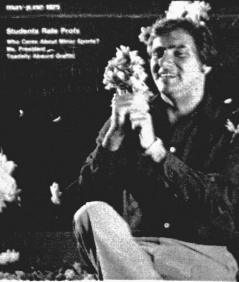
MISSOURI ALUMNUS
MAY 1957



MISSOURI ALUMNUS
MAY 1957



MISSOURI ALUMNUS
MAY 1957





Sharon Baysinger, a Missouri alumna and formerly an assistant director, was named the director of Alumni Activities in May.

relationship with the University and to greatly expand Association programs.

A board of directors of more than 50 alumni serves as a sounding board for both University-to-alumni and alumni-to-University. The Board oversees a wide variety of programs that emanate from the Association's headquarters in the Alumni Center, a two-year-old achievement constructed entirely with \$1 million in gift money. The Center is located next to the University Golf Course on Stadium Boulevard. Many alumni are active in the five standing committees: Communications, Awards, Athletic, Tours, and Membership. Others are involved in divisional organizations and the county and metropolitan chapters. The Association has ongoing programs for attracting students to Mizzou, including a National Merit Scholar project that has made the University a leader in that field.

As the official voice of the Association, the *Missouri Alumnus* magazine continues as the primary informational medium for interested alumni.

Every successful magazine has a formula that its editors believe will appeal to a specific market, and so does the *Alumnus*. The magazine is divided into four parts. A Campus-wide section of features opens the book. Then comes Around the Columns, devoted to news from the 14 academic divisions; News About Alumni, which includes an extensive Class Notes department; and News From the Association, a four-page picture section of Alumni Association activities. Students and college life are emphasized in the Campus-wide mix, which also includes features about teaching, research, athletics, tradition, and the institution itself.

Throughout, the *Alumnus* strives to be interesting and objective. The magazine doesn't lead crusades, but neither does it dodge the issues. University administrators never have seen censorship as part of their roles. The *Alumnus* covered student-administration problems in the '60s, the flap in the legislature over extension in the '70s, how Mizzou fits into a four-campus situation, and the firing of Onofrio.

Over the years, the *Alumnus* has won its share of awards, but its staff is more concerned with the reaction of the reader, because the *Missouri Alumnus* belongs to the alumni. If you are not now an Association member, send in the coupon on page 2. After all, the *Missouri Alumnus* is the world's only magazine whose primary concern is Mizzou. □

OFFICERS

President: Barbara Moore
Economic Farms
Malta Bend, MO 65339
President Elect: Tom Schultz
3 Blackhawk Estates
Lake Ozark, MO 65649
Vice President: Gene Leonard
30 Portland Place
St. Louis, MO 63108
Vice President: Bill Phillips
103 N. Market
Miami, MO 63356
Treasurer: Jack McCausland
3633 N. College
Kansas City, MO 64117
Secretary: Sharon Baysinger
132 Alumni Center
Columbia, MO 65211
Past President: Jerry Tennant
1210 West 67th Terrace
Kansas City, MO 64113
Past President: Doris England
415 Trailgrove Ct.
Baltimore, MO 63011

DISTRICT DIRECTORS

District 1: Hank Copeland
612 W. Calhoun
Rock Port, MO 64482
District 2: Bill Robbins
515 De Bot
Trenton, MO 64683
District 3: Don Bailey
3405 Broad Lawn Dr.
Kirksville, MO 63501
District 4: Jim Heltmeyer
RFD 4
Carrollton, MO 64633
District 5: Joe Moseley
1199 Fyler Pike
Columbia, MO 65201
District 6: Bruce Lowenberg
2935 Rockwood Trail
St. Charles, MO 63301
District 7: Vernon Jones
905 West 68th Terrace
Kansas City, MO 64113
District 7: Roger Phillips
2300 City Center Square
Kansas City, MO 64105
District 8: Jim Thompson
105 N. Price
Harrisonville, MO 64701
District 9: Olla Tretter
P.R. 1 Box 213-38
Osage Beach, MO 65666
District 10: Tom Neher
1 Marquette
Union, MO 63084
District 11: Myke Landers
12605 Casselton Ct.
St. Louis, MO 63141
District 11: Bill Lenox
1970 Tricom Ln.
St. Louis, MO 63131
District 12: Jo Anne Ellis
Audrain: Emer Auselker
Mexico, MO 65265
District 13: Ed Powell
Harrison Lumber Co
Box 745
Springfield, MO 65801
District 14: Richard D. Kinder
113 N. Frederick
Cape Girardeau, MO 63701

REGIONAL DIRECTORS

Eastern: Mike Lattman
212 East Broadway, Apt. 1705
New York, NY 10002
Eastern: Walton Smith
7616 Hackmore Dr.
Potomac, MD 20854
Southeast: David Hitzhusen
P.O. Box 171801
Miami, FL 33183
Southeast: Art Smith
3612 Royal Court North
Wilmington, FL 33803
Midwestern: Bob Drason
3736 Aspen
Flinnshor, IL 60422
Midwestern: Clay Davis
1408 North Main
P.O. Box 573
Bloomington, IL 61701
Western: H Bailey Gallison
7940 Avenida Alamar
La Jolla, CA 92037
Western: Irving Cohen
509 N. Hillcrest Rd.
Beverly Hills, CA 90210
Southwestern: Betty Gathel
2628 Elmhurst
Oxnard, CA 93120
Southwestern: Richard Pecora
9601 N. 35th Place
Phoenix, AZ 85028

MEMBERS AT-LARGE

Out State: John Skelton
Wellington Bank P.O. Box A
Wellington, MO 64097
Out-of-State: Bruce A. "Red" Graham
5 River Lane
Westport, CT 06880

COMMITTEE CHAIRMEN

Athletics: Don Rutter
408 East Mission
Marshall, MO 65340
Awards: Nick Monaco
211 East Central
Jefferson City, MO 65101
Communications: Tom Eblen
445 Westbower St.
Kansas City, MO 64113
Membership: Ron Osborne
674 Hawtrock
Glendale, MO 63122
Tours: John Acuff
RFD 3
Lee's Summit, MO 64063

DIVISIONAL DIRECTORS

Agriculture: Ruben Turner
1617 Webster
Chillicothe, MO 64601
B & PA: C.L. William Paw
4121 Brookridge Drive
Shawnee Mission, KS 66205
Education: John Ross
P.O. Box 12
Barling, MO 63301
Engineering: Edward Dabler
114 Gayer Forest Drive
St. Louis, MO 63122
Forestry: J. William Martin
110 Ft. Wyman Road
Rolla, MO 65401
Home Economics: Charnette Norton
10026 North Locust
Kansas City, MO 64185
Law: Ken Suelthaus
Suelthaus, Krueger, Cunningham & Yates
7711 Carondelet Ave., Suite 500
St. Louis, MO 63105
Library Science: Kay Klistock
3312 Black Hills Rd. N.E.
Albuquerque, NM 87111
Nursing: Shirley Farnam
2309 W. Broadway, Apt. A401
Columbia, MO 65201
Public & Comm. Ser: Jane Gross
1225 Army Road
Jefferson City, MO 65101
Veterinary Medicine: Kenneth M. Vroman
Ellen Eden Dr.
Glasgow, MO 65254

STUDENT REPRESENTATIVE

AASB President: Scott D'oubler
909 Richmond
Columbia, MO 65201

CHARTER COUNTIES

Adair: Don Bailey
Kirkville, MO 63501
Andrew: Wayne Miller
Savannah, MO 64485
Audrain: Emer Auselker
Mexico, MO 65265
Barry: James LaCompte
Cassville, MO 65629
Bates: James Bradley
Rich Hill, MO 64779
Boone: Ron Shy
Columbia, MO 65201
Buchanan: Ron Warr
St. Joseph, MO 64506

Butler: Bob Cope
Poplar Bluff, MO 63901
Caldwell: Larry Snyder
Hamilton, MO 64814
Camden: Dick Ganahl
Cameron, MO 65020
Cape Girardeau: Michael Bennett
Cape Girardeau, MO 63701

Carroll: Paul West
Carrollton, MO 64633
Cass: Larry Rutsch
Harrisonville, MO 64701
Cedar: John Cassell
Stockton, MO 65786
Chariton: W.F. Krueger
Keytesville, MO 65281
Clay: Charles Taylor
Liberty, MO 64088
Clinton: Theda Egel
Cameron, MO 64429

Cole: Bob Wilson
Jefferson City, MO 65101
Crawford: Michael Ryle
Cuba, MO 65253
Dunklin: Harold Treasure
Kennett, MO 63857
Franklin: Thomas Neher
Union, MO 63084

Cole: Bob Wilson
Jefferson City, MO 65101
Crawford: Michael Ryle
Cuba, MO 65253
Dunklin: Harold Treasure
Kennett, MO 63857
Franklin: Thomas Neher
Union, MO 63084

Geney: Jim Fall
Albany, MO 64402
Greene: Bruce McCurdy
Springfield, MO 65801
Grundy: Allan Seidel
Trenton, MO 64683
Howell: D. Bruce Smith
West Plains, MO 65775
Jasper: McDonald and Newton: Suzie Duncan
Joplin, MO 64801

Johnson: Tom Hill
Warrensburg, MO 64093
Kansas City: Vernon Jones
Kansas City, MO 64113
Kansas City: Roger M. Phillips
Kansas City, MO 64105
Laclede: Dalton Wright
Lebanon, MO 65256
Lafayette: John Skelton
Wellington, MO 64097
Livingston: Jim Alford
Chillicothe, MO 64601
Macon: Ronald Dale
Macon, MO 63652
Marion: Kent Brown
Hannibal, MO 63401

Mercer: J. Morgan Donelson
Princeton, MO 64673
Miller: John Caine
Eldon, MO 65026
Morgan: Jim T. Hughes
Versailles, MO 65084
Phelps: Robert Thompson
Rolla, MO 65401
Pettis: Mary Famer
Sedalia, MO 63301

Pike: William C. Melroy
Bowling Green, MO 63334
Platte: Lowell R. Griffin
Platteville, MO 64152
Putnam: Tom Fowler
Leonville, MO 63665
Ray: David Busch
Richmond, MO 64085

St. Charles: Floyd Eberhardt
St. Charles, MO 63301
St. Louis: Bill Lennox
St. Louis, MO 63131
St. Louis: Mike Landers
St. Louis, MO 63141
Scott: David Bowman
Sikeston, MO 63801
Sullivan: Robert Wilson
Milan, MO 63556

Vernon: James R. Bickel
Nevala, MO 64772
Webster: Elva Jackson
Marshfield, MO 65706

OUT-OF-STATE CHAPTERS

Bloomington: Norman Lary Woodson
705 Broadway
Normal, IL 61761
Chicago: Jack Resnick
1911 S. 12th Street
St. Charles, IL 60174
Dallas: Ford Norm, Stan Falwick
9870 Dale Crest, Apt. 1109
Dallas, TX 75229
Denver: Don Stuck
130 Pearl Street, #101
Denver, CO 80203
Houston: David Rizzo
974 Lamar Road, #104
Houston, TX 77024
Los Angeles: In Cohen
208 N. Hillcrest Road
Beverly Hills, CA 90218
Memphis: Michael G. Jones
203 Madison Ave.
Memphis, TN 38103
Miami: Fort Lauderdale: David Goodman
4810 Monroe Street
Hollywood, FL 33021
New Jersey: Fred Schwab
95 Birchwood Drive
Millington, NJ 07946
New York City: Mike Lattman
212 East Broadway
New York, NY 10002
New York, NY 10002

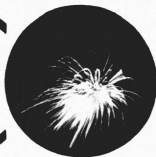
Oklahoma City: John Shoush
10309 Basewood Cirney
Oklahoma City, OK 73132
Philadelphia: Jim Yell
309 Woodside
Bellevue, WA 98009
Phoenix: Art Smith
2302 McArthur Drive
Starkville, MS 39759

Tampa: St. Petersburg: Art Smith
P.O. Box 5400
5605 S. Florida Ave
Lakeland, FL 33803
Tulsa: Thomas M. Hagemann
1723 S. Massion
Tulsa, OK 74120
Washington, DC: Jim Messersmith
3624 N. Nelson Street
Arlington, VA 22207

INTERNATIONAL CHAPTER

Korog: Dr. Wan Cho
President
Hankuk University of Foreign Studies

COLUMBIA'S SUMMER AWAKENING



Snapping shut the bluebook, the student hands it to the professor. The last exam is finished, the winter semester is over.

Ecstasy!
Freedom!
Que sera, sera!

Text and photos by Larry Boehm

The bags are packed and the motor is running. Good-bye, Mizzou, see you in the fall. The last glance of the city fades from a rear-view mirror. School's out, summer jobs, summer vacations and summer romances are in.

But although the academic year's nine-month home-away-from-home fast becomes a memory for the fleeing student, Columbia is alive and well in mid-Missouri. June, July and

August are humid and hot, but not quiet, as these months were when the city largely marked time until students returned. Spending the summer in Columbia was once dreaded by some, looked forward to by those who enjoyed the quiet of almost empty streets. It's not that way any more for 50,000 year-round college-townners.

Stores no longer close, transferring personnel to the big cities for the duration. Trains don't take students away and bring them back three months later. Beer, wine and liquor by the drink is not illegal. Most summer school students aren't

teachers, superintendents or principals. Popular local orchestras aren't booked aboard cruise ships. Kiddie movies at the Hall or Missouri Theater aren't the only show in town. And "On Vacation" signs don't hang in downtown windows during the month of August.

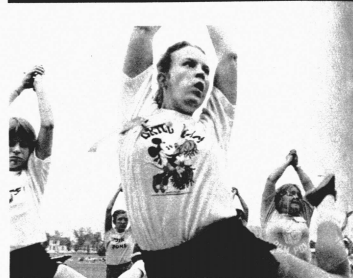
The good old summertime also has become a busy old summertime in Collegetown USA. □

Skip Walther is the 1979 Columbia Open Tennis champion.



Harpo's deck is as popular with Columbia residents during dog days, as it is with students the rest of the year.

More than 75 local artists participated in the 21st annual fair sponsored by the Columbia Art League.



Anything and everything is sold at the consignment auctions every Tuesday and Friday at the Boone County Fairgrounds.





Put 540 cheerleaders in a four-day camp, that spells S-P-I-R-I-T!



Summer is the time when juggler Marty Pliske can take his talent to the street.

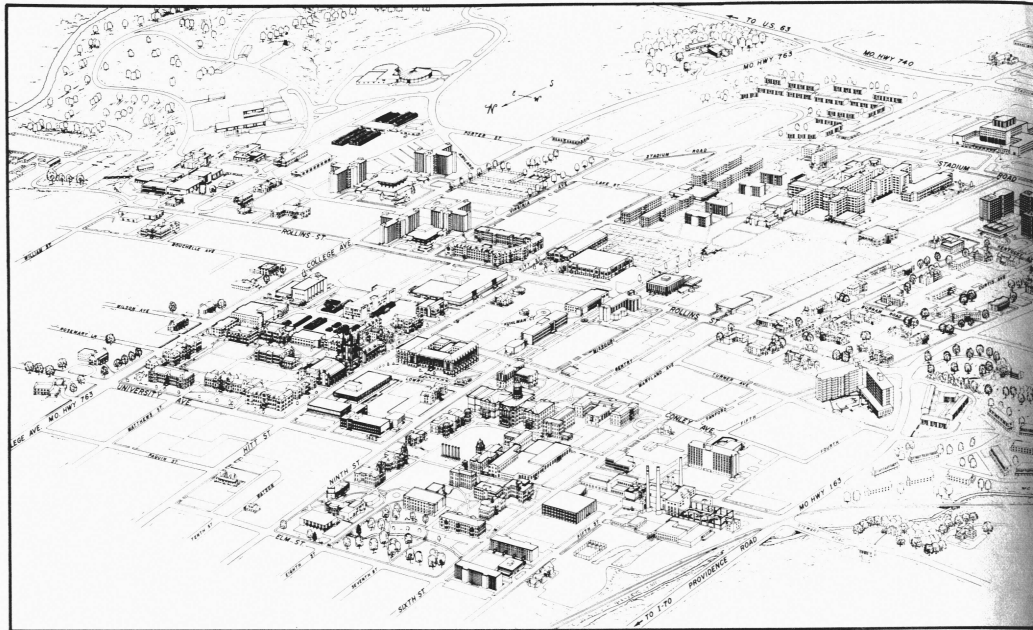


Bluegrass music and popsicles in Peace Park can brighten any rainy Saturday.



Lively entertainment under warm starlit skies can be found at the Maplewood Barn.

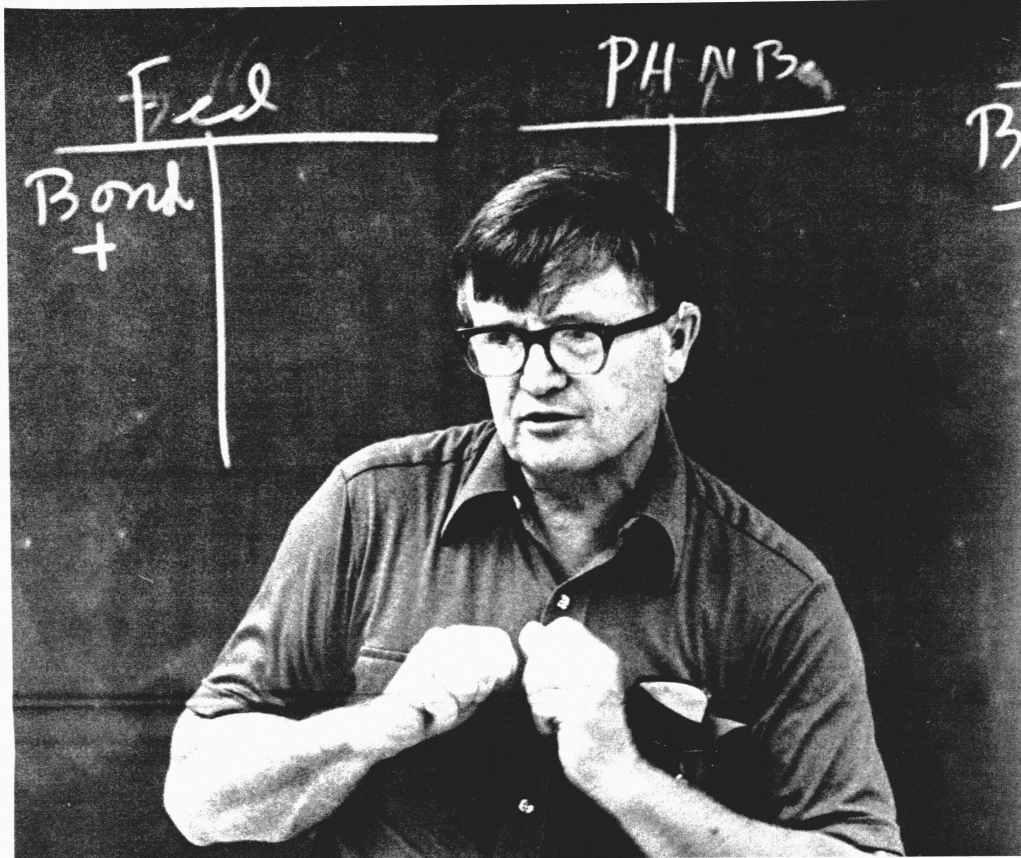
There's nothing like a sale to fill downtown sidewalks with crowds of bargain hunters.



H

ere's a chance to take a digital tour of old Mizzou that's bound to be more enjoyable than letting your fingers walk through the yellow pages.

□ □ □ The perspective map of this Campus was first commissioned by University President Frederick Middlebush in 1952. Engineering Dean Huber Croft handed the project over to his assistant, Walter Miller, who assigned the task to freshman Ralph Arnhold, BS EE '58. □ □ □ Of course, the University was a lot smaller then. □ □ □ "We had the Red Campus, the White Campus and the Library in between. There was a tiny stadium and a lot of temporary buildings," says Arnhold, who has been updating his handiwork ever since. □ □ □ In 27 years and 17 map revisions, the Campus has almost tripled in size. Major construction of the last five years includes: the Veterinary Medicine Building (Number 147 on the map at right), the Veterinary Diagnosis Laboratory (128), the Alumni Center (145), the stadium's new seating section (112), the athletic department's expanded training facilities (7), Journalism School's Gannett Hall (150), and the School of Nursing (149). Private funds were used to construct the Alumni Center, and the Gannett Foundation made a major gift for the journalism building. The athletic department has a fund drive under way for its new facility.



THE WIZARD OF ECON

By Carol Baskin

"You won't get answers or recipes in this class," plain-talker John Kuhlman announces the first day his basic economics course meets. "Unless you infuriate or exasperate me beyond endurance, I won't ask you to memorize anything. But I will ask you to understand. Understanding — that's the important thing." The professor who looks like somebody Norman Rockwell might have painted opens his book of Montaigne's essays and quotes, "to know by heart is not to know."

Kuhlman makes the exploration of economics a grand pilgrimage. He has more in mind for his students than mastering his own academic discipline. Economics is the means. The end is the ability to think, reason and better cope with life. His lectures are delivered with animation and bluster. No low-key classroom approach here. Kuhlman's vast contact with students — 1,000 each semester between 1964 and 1975 — and their assessment of him leave few teaching awards he hasn't received sometime during his 18 years on Mizou's faculty.

Not that the thousands flocked to his five-

hour course, Econ 51. Rather they were herded by requirements. Handed this largely captive and mostly freshman audience, Kuhlman seized the opportunity to teach and influence with almost paternal zeal.

Although the responsibility for Econ 51 now belongs to another professor, Kuhlman's commitment to teaching is unchanged. More than anything he wants his students, like his three children, to believe in the value of a university education and its leverage potential. He uses his own history as a case in point, describing how he hoisted himself out of a "purely peasant community."

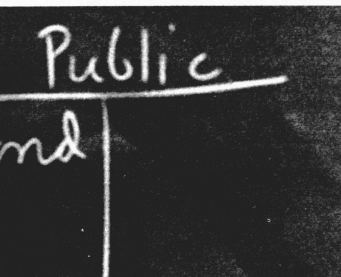
KUHLMAN SPENT ENOUGH of his youthful years downwind from a combine to know he didn't want to be, like his father, a wheat farmer in Washington state. No matter that the Depression was ending. When he was about to graduate from high school (in a class of five), a young teacher said she thought he ought to be in business. Armed with that paltry bit of career advice ("counselors came as part of modern bureau-

cracy"), he set out for Washington State University.

The professor who nearly flunked out tells his students they should "try to take the first year or two on faith." But World War II interrupted college, and by the time Kuhlman got out in '46, the still-wet-behind-the-ears farm boy had grown up enough to see some purpose in learning. As he began to discover his own intelligence, Kuhlman noticed that his professors seemed to lead lives far preferable to his father's. "I never remember my father as being anything but old," he says. "Professors wore two-toned shoes and seemed to really enjoy life." And so, he explains quite simply, he decided to be one, too.

"The American university has to be classed as one of the greatest social institutions in the world. It's the major vehicle for providing upward mobility. It's how a kid from the farm can become a college professor. You don't have to be what your parents are. You can pick out your own drummer to march to."

Kuhlman is a great believer in dialogue, particularly between students and teach-



to help Mizou TA's. "John is one of our most active faculty members," says economics chairman Whitney Hicks.

Kuhlman is candid with his students about his hearing disability. "You have to help me by speaking just one at a time and by looking at me when you are talking," he tells them. He heads for his office immediately after class, inviting students to talk to him there. He can comprehend little in an after-class chorus of voices.

Kuhlman still insists on discussion. In his waffle-bottomed shoes, he bounds off the stage dozens of times in the class period so he can get close enough to see what's being said. Rather than complain, he adapts. His humor remains.

STUDENTS THIS SUMMER rate Kuhlman an excellent teacher, but say his deafness is a barrier. One long-time faculty colleague finds Kuhlman "less ebullient, more quiet. He misses a good bit in social situations, but not much in the classroom." Kuhlman "refuses to be licked. I have never seen him discouraged," says close friend William (Mac) Jones, English professor. "John Kuhlman is first, last and always a teacher," says Walter Johnson, the professor who inherited the Econ 51 "milkid" classes from Kuhlman. "He believes that students should have the same thrill of learning that we pedagogs do."

Kuhlman says his formula for teaching success is simple. First, give students all the personal attention they need and treat them humanely. Next, be knowledgeable about the subject. And third, demonstrate enthusiasm, "even on the days you don't feel like being enthusiastic."

The professor knows many of his Econ 51 students don't remember much economics. "I didn't ever expect they would. But I would like to think that a number of them remember the experience of Econ 51 to their dying day, that they remember John Kuhlman. That's about what it comes down to. I think it's important that you get involved in some type of college experience that sticks with you. If you go through college and nothing happens worth remembering, hell, you might as well be out digging ditches."

Determined to reach Econ 51 students, Kuhlman concocted scores of schemes. He and his dozen or more TA's sent letters of congratulation to every student who made an A. They devised a series of weekly quizzes. Each student had four chances a week to pass the night-time tests. "We did that to get them to start studying at the beginning of the semester, before it was too late." There were contests between lab sections, winners treated to lasagne and brownies for Sunday night supper, compliments of the Kuhlman's.

HE STILL USES excerpts from a special lecture built around a pricing scheme for Mizou football tickets to teach market mechanisms. "Roughly, it's what they [the athletic department] did last year — charge people more who would pay more for better seats." Kuhlman always delivered that lecture wearing a T-shirt that said "Econ 51" on the front and "#1" on the back. "Hog heaven" is his handle for the point where demand equals supply. He describes consumption in terms of peanut butter and jelly and pickles and rye bread. Students can relate.

Kuhlman has kept letters from students for the nearly two decades he's taught at

Mizou. Many are written on lined paper torn from spiral notebooks. Others are carefully folded stationery; another on a scrap says "for the eyes of John Kuhlman only." Sharing a bit of political camaraderie, one writer signs his message "perfectly clear." Jumbled among two manila folders, the letters reveal a profound admiration for someone who reached them. Some are impetuous and gushy, others shy and carefully worded. Others are reminiscent of those reflective epistles daughters and sons sometimes write home to their parents, especially during those first serious attempts at being "adult."

Some samples:

"I thank you for not just teaching me econ but for helping to educate me on my worth to myself and society." (1969)

"As long as the wisdom of Sophocles and Santa Claus is spewed from the stage of B & PA, there is hope for all of us. Keep up the good work." (1971)

"You have rattled my cage, all right!" (1973)

"I only hope you never feel your concern for students has been in vain. I felt it, and I will remember it, long after I have forgotten how to figure the tax multiplier." (1974)

"Thank you for exposing us to your own brand of free-thinking skepticism — skeptical of ideas but not necessarily of the people advancing them." (1979)

"Keep trying to reach us. There are some who are inspired and taught by your talks on education. Even a diamond does not sparkle until it is cut." Thank you, sir." (undated)

KUHLMAN HAS DEVOTED his teaching life primarily to undergraduates, but he also has a well-established reputation as a consultant in his specialty area, anti-trust and unfair trade practices. "His theories of determining damages have been very useful," said one attorney. "One frontier he has broken is proof of liability by statistical and economic evidence."

Kuhlman takes great satisfaction in the work. "I do a lot of it, and I've made a difference," he says with quiet pride. "I've helped people who have been hurt." For Kuhlman, consulting and his research are all wrapped up together. "Nearly all of my publications have come out of my consulting work. That's how you develop your reputation, your expertise."

In recent years Kuhlman has developed another vocation, farming. He says it's too consuming to possibly be called an avocation. He and his wife, Mary Ann, bought 240 acres of river hills and pasture several years ago and this spring, moved to their new hillside home built of rough-sawn cedar. It's 25 miles south of Columbia, and is as much a wilderness as Boone County has to offer. The road leading from the highway loops down to a "crick" where the Kuhlman's scavenged the rock for their fireplace, and then to the Missouri River bottoms. There are still fences to build and firewood to cut; his dismantled darkroom will have to wait.

The whole picture fits with his self-described "staunchly independent" political stance and the wheat farm from whence he came.

"If you can march to your own drummer, don't let somebody else play the tune, that's an ideal existence. You are the only person you have to live with a whole lifetime. I think I am about as close to that as I can get. I've got it sewed up." □

ers. He has nurtured this interchange through his allegiance to discussion in the classroom, willingness to speak to dozens of student groups, and his office-based "counseling service."

Now, however, discussion has become a supreme effort. Kuhlman is almost totally deaf. In a matter of two or three days in 1967, he lost the hearing in one ear. Teaching assistants used to tell their lab sections to "talk into his good ear," but a few years ago, its hearing went too. He had anticipated this loss, so Kuhlman already had learned to read lips at the University's speech and hearing clinic. Today he perceives what is said largely by riveting his blue eyes to whoever's speaking.

The 56-year-old professor now teaches an honors section of Econ 51 each semester and directs the undergraduate honors program. Kuhlman also teaches an anti-trust course to undergraduates and a graduate seminar in monopoly and competition. Occasionally, as this year, he teaches Econ 51 in summer school. He's also the energy behind a videotape on teaching effectiveness, now being produced



ENERGY SAVER

A man's home was once considered his castle, but higher energy costs can turn most princes into paupers.

What this country really needs is an energy efficient home at an affordable price, and that's exactly what the University is building at its Swine Research Complex south of Columbia.

At a cost comparable to average residential housing, a "New Technology House" provides maximum energy-saving technology for farm overseer Lyndle Vanskike and his family.

A separate instrument room monitors the collection and storage of solar heat, expected to provide 75 percent of the family's needs. A duct and fan system carries solar heat from roof collectors and stores it in 30 tons of gravel beneath the house.

The foundation of all-weather treated wood, protected against water seepage by plastic barriers, has a 100-year life expectancy.

A specially designed system of windows and doors makes the highly insulated home energy efficient. Incorporating a system of air-locked double doors, the home also contains a reduced number of windows, covered by draperies that seal tight against the walls. The bedroom windows have venetian blinds between the panes.



BEEF EATERS

Cardiovascular disease is the leading cause of death in the

United States. And although apparent risk factors are multiple and unrelated, the press, nutritionists, food faddists and manufacturers have made us all aware of cholesterol.

The American Heart Association warns that persons eating beef more than three times a week risk blood cholesterol buildup.

So Dr. Margaret Flynn, professor of nutrition, is determining the effects of beef-eating on 240 men and women with normal cholesterol levels.

The participants, average Americans in good health, ate at least five ounces of beef a day for one three-month period and a minimum of five ounces of chicken, turkey or fish daily for a second three months.

During the project, they also ate an egg a day, did not lose or gain more than two pounds and continued their usual lifestyle. Blood was analyzed at the begin-

ning of the experiment and at the end of each three-month period.

Flynn already has completed one study on eggs. She concluded, "The daily ingestion by normal healthy males of whole egg cholesterol at levels of one or two fresh eggs for three months does not increase serum cholesterol significantly."



WILIGHT ZONE

Just beyond the violet end of the visible light spectrum lies the "near-ultraviolet."

In recent years there has been a major increase in exposure to this higher energy invisible light, which causes sunburn, skin cancer, and may be mutagenic.

Fluorescents, mercury vapor lights and special UV lamps used industrially and medically are all significant sources of potentially harmful exposure, but the greatest danger is the depletion of the

RESEARCH ROUNDUP
ENERGY HOUSE
BEEF EATING & CHOLESTEROL
THE ZONE NEAR ULTRAVIOLET
MISSOUR-EE OR MISSOUR-AH
WATCHING THE GRASSHOPPERS

upper atmosphere's ozone layer which filters "near-UV" light.

"That is the ultimate worry. We can change our lighting, industrial uses and medical treatments, but we can't change natural forces," says Dr. John P. McCormick, associate professor of chemistry.

Supported by the Bureau of Radiological Health, McCormick is studying the chemistry and the biological effects of this light wave length with a specific focus on the components of DNA and RNA molecules.

In the lab, the five major nucleosides of the RNA and DNA are degraded by exposure to "near-UV" light. McCormick hopes to define the chemistry of this reaction and determine the probability of its occurrence in living systems.



MISSOUR-EE/ MISSOUR-AH

While 51 percent of the people in this state say "Missour-ee," and the rest "Missour-ah," Ralph Rowlett, professor of anthropology, says neither is the original pronunciation.

"First written down by French explorers, it's derived from a Niu-tachi Indian word. Their name for the river, not their tribe, was the real basis for the name of the state."

The Jesuit explorer, Father Jacques Marquette, transcribed the river's name as "Oue Mes-souret" — phonetically, "Way May-sue-ray."

Why then are there two different pronunciations today?

Some believe that settlers from Kentucky brought its final "ee" to their new home, while the final "ah" came with Virginians.

Rowlett has another theory. "This is a sticky point. I'm guaranteed to disagree with about half the citizens of the state, but Missouri-ah just comes off a little bit easier than Missouri-ay. Apparently, when the English settled here, Missouri-ay was a little hard for them to say . . . though not impossible."

Rowlett thinks the "ee" ending may have been borrowed from the Latin by educated Missourians. "The Romans used the 'ee' sound as a suffix on tribal names in Europe." However, Rowlett, a native of Kentucky, prefers the Missouri-ah pronunciation. "I find it more euphonious. Missouri-ee sounds a little like misery to me."



FIGHTING INSECTS

One thing that really bugs farmers is a swarm of crop-destroying insects.

That's why Gene Munson, a survey entomologist for the College of Agriculture, is busily keeping tabs on grasshoppers, cutworms, army worms and other pests.

The biggest menace to farmers and gardeners is the grasshopper. Eight of these little rascals

per square acre can eat as much grass as a full-grown cow.

"Grasshoppers will feed on anything. They prefer weeds and such in the roadside when they first hatch, but these things mature, and a farmer comes along, plants nice tender soybeans out there. This grasshopper's not stupid. He doesn't want to eat a tough weed when there're tender little soybean plants."

Rather than pumping fields full of strong pesticide to wipe out adult grasshoppers, Munson's observations provide an alternative.

"Grasshoppers hatch in restricted areas, because they congregate when they lay their eggs."

Young grasshoppers are extremely vulnerable and can be eliminated with weaker chemicals before they begin to destroy crops.

"The less chemical control the better," Munson says.



Camp stoves, sleeping bags, tents, water jugs, and coolers leave just enough space for a pair of paddles and two paddlers.

"A river is more than an amenity, it is a treasure. It offers a necessity of life that must be rationed among those who have power over it."

— Justice Oliver Wendell Holmes

In 1804 Thomas Jefferson sent Meriwether Lewis and William Clark on a grand assignment. Just what was in this Louisiana Purchase, anyway? Was there a water route to the Pacific and thus to the Orient beyond? Or had Jefferson bought a pig in a poke? Lewis and Clark set their keel boats and dugout canoes against the current of the mighty Missouri River and pushed off just west of St. Louis. They were seasoned explorers

downstream to Hermann, but bristled with some of the same adventurous spirit those earlier travelers must have felt.

These 14 individuals came from classrooms throughout the state where they are teachers and from the classrooms of Mizzou. Dr. Gail Ludwig, an assistant professor of geography and extension specialist, and Jim Cooper, an environmental education specialist with the state's department of natural resources, organized the five-day course. Some took it for graduate credit, others signed up just for the learning experience and the fun.

In a state teeming with floatable rivers, "the Missouri is largely overlooked as an educational and recreational resource," says Ludwig. Surely none of the tanned travelers disputed the Missouri's value as an accessible playground by the trip's end. But most were surprised at how much they learned.

Ludwig calls herself an environmental geographer. She wants her discipline to "come alive," to mean more than studying maps. She and Cooper gave extemporaneous lectures during breakfast, on sandbars, when two or more canoes were within earshot — in short, wherever something was in

view to be learned about. The tandem trip leaders rounded up a cadre of people who had something to teach, though none were actually teachers by profession. Some, like soils and water conservationist Sam Orr, went along for the ride. He was at hand to point out the significance of changes in vegetation, land formations and soils, or to talk about such subjects with his succession of canoe partners. But most "teachers" met the group on cue, speaking their piece about historic preservation in Arrow Rock or folk architecture in river towns or primitive camping skills of Indians and frontiersmen. Ludwig brought along water study kits, which students used to test turbidity, temperature, pH, and dissolved oxygen content.

In Lewis and Clark fashion, each participant was expected to keep a journal, recording results of any testing they did, as well as observations of the river, weather conditions, land

GEOGRAPHY 301

Exploring the Wide Missouri

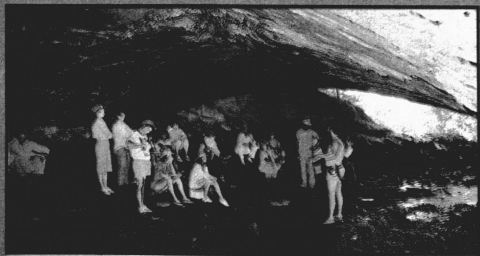
By Carol Baskin

by the time they returned almost 2½ years later.

One hundred seventy-five years after Lewis and Clark, another band of explorers put in at the Lamine River just above its confluence with the Missouri near Arrow Rock. They were headed 110 miles



Just like the earlier explorers, Peppy Combs is a teacher from St. Louis, records data and impressions of the river trip in her journal. One of the assignments of the course.



The mouth of a cave on the river's edge offers handy classroom space for Jim Cooper to explain how the cave was formed, before the flashlight group ventures into the darkness.

formations, wildlife, and impressions of the voyage.

The group beached at Boonville, toured the historic districts of that river town and later poked around the remains of defunct Haas Brewery. Near Rocheport they used a rope to climb hand over hand up a steep bank to the mouth of a cave. Searching eyes located pictographs on a cliff above the cave, put there by Indians centuries ago. One was a crescent on its back with a circle above. "Could that have meant a canoe and sunset?" an inquisitive journal keeper asked.

The three-street town of Lupus put forth an evening that reminded the travelers what television and air conditioning have done to America. An

open-fire cauldron of ham hocks and beans plus a quaint warming oven full of piping hot cornbread awaited the hungry. All of Lupus (just a few dozen natives and, within the last 18 months, an even smaller nucleus of young people looking for a simpler lifestyle) turned out. A film told the story of the late Mizzou professor John Neihardt, a poet and author who loved the Missouri River and the spiritual lore of the Indians. Alumnus John Hall (AB '64, MA '68), one of the poet's proteges, read from *Missouri Faces & Places*, his portrait of the state. Later

everyone sampled fresh raspberry ice cream and listened to area musicians jam a while with guitar, fiddle and harmonica. For young and old, native and traveler, country and city, there was time to talk, and nobody was a stranger.

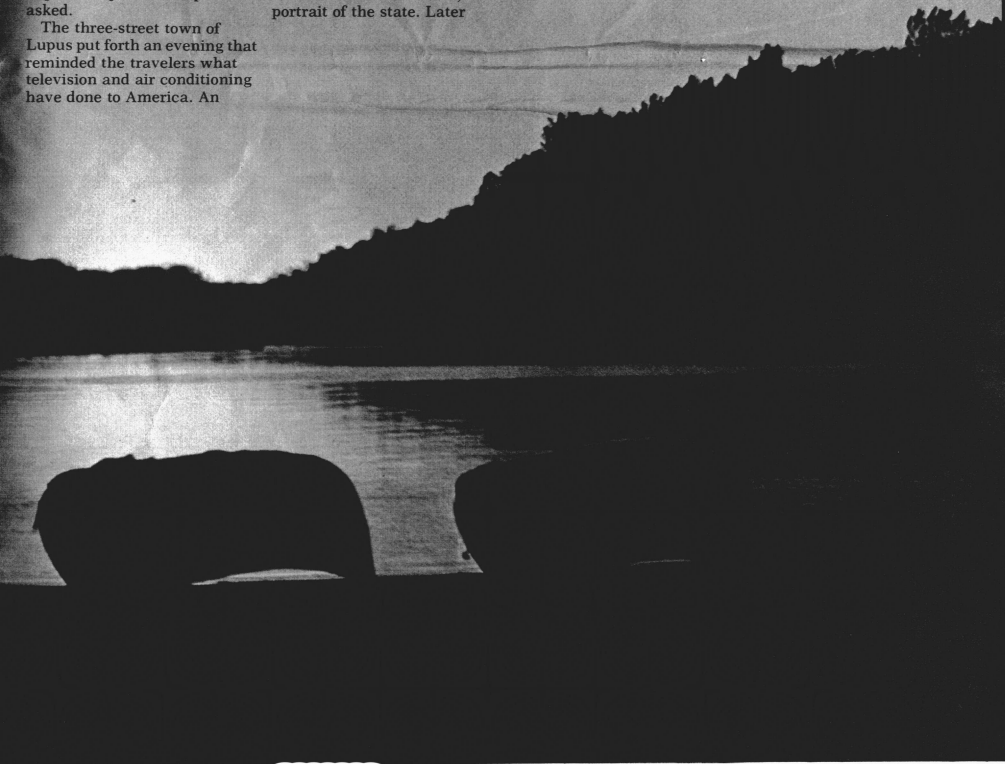
At Wilton the group studied a 147-year-old cemetery. By recording epitaphs, family names, birth and death dates and ages of deceased, they saw how a graveyard by itself can reveal much of a community's past, like the smallpox epidemic that ravaged the little town in the 1880s.

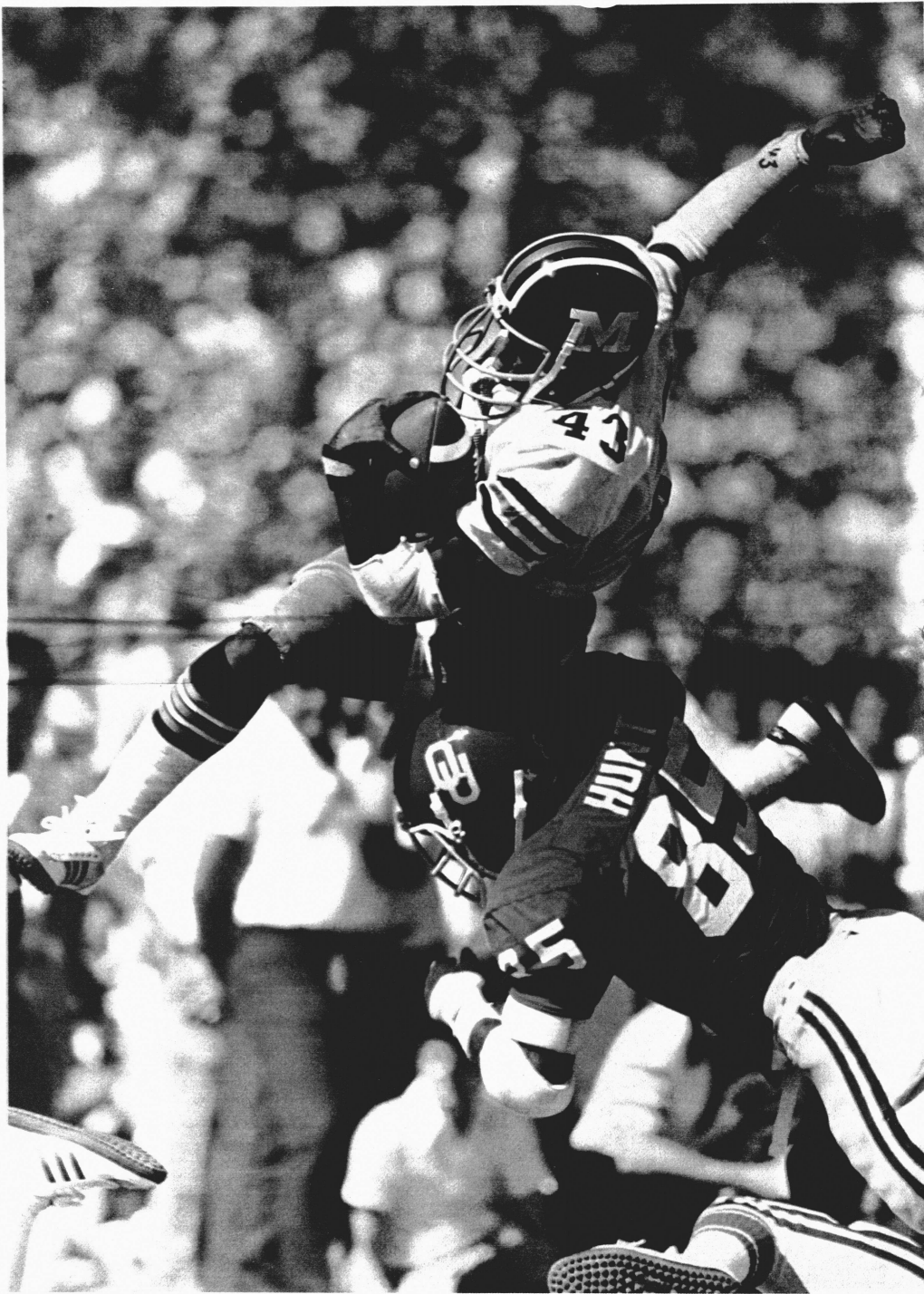
On the fifth day, tennis shoes by now thoroughly full of Missouri mud, the group traipsed through the state capitol in Jefferson City. Later they saw the electric power generating plant at Chamois from the inside out. At Gasconade, Homer Howard led the group through the 377-foot paddle wheel steam dredge he captains for the Army Corps of Engineers.

If the Missouri River is dangerous for canoes, its perils

are different from the state's oft-floated streams, where submerged logs and boulders lurk. Before the Corps of Engineers started girdling the Missouri, the river was wider, there were more backwaters and thousands of islands, and the channel meandered more. Now it is free-flowing and swift enough that the channel carried along its passengers at about five miles an hour. All they had to do was steer. No one tipped over, although there were a few wind squalls that had to be fought just to stay with the current. Just in case, though, Russ Conn of the Missouri Water Patrol accompanied the group in his motorized john boat.

Ludwig and Cooper plan to run at least two similar trips next year, when they and other environmentalists hope to have organized a full-fledged 1990 "Year of the River" celebration. □





'WE CAN WIN the BIG 8'

By Randy Covitz

Warren Powers doesn't believe in playing it coy. In assessing the 1979 Missouri Tigers, the second-year coach lays it right on the line.

"We can win the Big Eight," says Powers. "It won't be a fluke. We won't be a dark-horse contender. We're a bonafide contender.

"Our people think we should be contenders, and, after talking to people in the conference and around the country, they think the University of Missouri could be one of the strong teams in the conference and in the country based on whom we have coming back," added Powers, whose team returns 36 lettermen, 11 of whom were starters.

Powers' optimism is shared by Tiger fans who are buying season's tickets at a rate surpassing last year's record 45,114. And unless the gasoline shortage dictates otherwise, walk-ins will assure Mizzou of another record season in total attendance. Last year's per-game average was 65,745. Reserved seats for home games against Texas, Oklahoma and Nebraska (where else this year can there possibly be a better home schedule than at Missouri?) are sold out, and only a smattering of tickets remains for the September 8 opener against San Diego State and October dates with Oklahoma State and Kansas State.

After the season? Most fans are expecting a bowl game. Some already have booked New Year's reservations in Miami.

And with the new ticket policy requiring donations for prime seats now in force, the timing couldn't be better for a banner season.

Missouri's football program carries a heavy financial burden. Anticipated football revenue of \$3.2 million comprises nearly half of the \$6.6 million budget for men's and women's athletics, and no doubt the fan-contributors will expect a reward for their generosity.

Such factors have increased the pressure on Mizzou's football team tremendously, but Powers thinks his Tigers can deliver. So do the pollsters.

Nearly every preseason forecast lists Missouri in the Top 20, with one poll picking the Tigers seventh in the nation. However, that same poll lists Mizzou third in the Big Eight — behind Oklahoma and Ne-

braska. The Tigers finished second in the poll conducted by the Big Eight office.

"Our talent is as good as anybody's," says Powers, who was named national coach of the year by the prestigious Walter Camp Foundation after directing the Tigers to an 8-4 record and Liberty Bowl win over LSU last year. "We've been picked high, and this is good. I'd rather be picked to win them all instead of to lose them all.

"The kids tasted a little bit of the thrill of victory last year, and they realized how hard it was to attain it."

That taste of victory — the 20-16 Liberty Bowl triumph — parallels the experience of the last Missouri team to win the Big Eight and play in the Orange Bowl, the 1969 Tigers. Ten years ago, Missouri came off an 8-3 season — capped by a rousing 35-10 Gator Bowl victory over Alabama — and proceeded to share the league title with Nebraska and earn the Orange Bowl berth opposite Penn State. Not coincidentally, that was the last year Missouri has beaten Oklahoma.

Just as Terry McMillan was the key that turned the tumblers for the '69 team, junior quarterback Phil Bradley is the source for

Roundball

Football isn't the only sport for which big things are expected at Mizzou. The Tiger basketball team probably will be the favorites to win the Big Eight and could be ranked nationally in the pre-season polls. This enthusiasm largely is due to Coach Norm Stewart's recruiting coup in landing superstars Steve Stipanovich, a 6-11 center from St. Louis, and Jon Sundvold, a 6-2 guard from Blue Springs. Also eligible will be Ricky Frazier, who transferred from St. Louis U., where he was the Metro Conference freshman of the year in 1977-78. And Mizzou returns all but two players from the 1978-79 squad that finished second in the league. Stipanovich underwent knee surgery earlier this summer, but is reportedly making an excellent recovery.

not only Orange Bowl talk in '79 but Heisman Trophy honors by next season.

As a sophomore, Bradley led the Big Eight in total offense and passing while directing Mizzou to its second most productive scoring and total offense output of all-time. His passing percentage of 60.2 was the nation's third-best mark. However, Bradley bypassed spring football in favor of baseball, where he hit .314 as Missouri's rightfielder, and there is some concern about what effect this will have, particularly since his three top receivers of a year ago are gone.

"Bradley's missing spring football hurt at times, but he can compensate in the fall," said Powers. "He is a hard-working, dedicated young man who works at his skills. He's a proven quarterback who has been in heated battles. He has won; he has lost. He has faced it all, and he's just a junior."

With Bradley unavailable and last year's understudy, Jay Jeffrey, transferring to Baylor, Powers hoped to use the spring to develop an adequate backup quarterback. But senior Paul Miller suffered a knee injury that required surgery. Sophomore Mike Hyde received most of the spring work, and he, along with Miller and a pair

Coverage

Mizzou Review, a 96-page, leather-bound book covering the 1978-79 seasons for all 16 Tiger sports, men's and women's, is being offered by the athletic department. The book, available for \$10 plus \$5.00 postage, includes full-color action shots, statistics, and team records. To order, send check or money order for full payment to *Mizzou Review*, P.O. Box 675, Columbia, Mo., 65211.

Missouri Network Inc. will handle both the taped TV delay and the live radio broadcasts of all Missouri football games this fall. KSD St. Louis will be the flagship station for the telecasts with Ron Jacober handling the play-by-play and Jim Bakken, the color. KMOX St. Louis will originate the broadcasts with the team of Dan Kelley and Bill Wilkerson again behind the mikes.

A good possibility exists that the Tigers' game with Mississippi on Sept. 22 at Jackson will be telecast by ABC as an NCAA regional contest. If so, the game at Jackson will be moved from nighttime to afternoon.

Gerry Ellis dives for gain against Oklahoma. Photo by Rich Clarkson.

of transfers, Keith Pappas and Dan McDaniel, will battle it out for the role of understudy to Bradley.

The situation is a little reminiscent of the 1977 pre-season when much of the key to a banner season hinged on whether or not Pete Woods stayed healthy. He didn't, going down in the opening game. Inexperienced freshman Bradley was called upon to fill the breach, but the Tigers could never really get it together again. The hope in 1979, of course, is that Bradley will stay as durable as he has been his first two seasons.

If Bradley indeed becomes a legitimate Heisman candidate this year or next, some of his chief competition could come from within his own backfield in the form of 6-2, 215-pound junior James Wilder, who rushed for 873 yards and 12 touchdowns last year and earned the MVP award in the Liberty Bowl.

Wilder will start alongside senior Gerry Ellis with sophomores Bob Meyer and Terry Hill behind them. Because of the wealth

in the Big Eight." The important noseguard post is also being bolstered by switching Jeff Gaylord from linebacker and Jerome Saly from defensive end.

Although linebackers Chris Garlich and Billy Bess have graduated, Eric Berg — the outstanding defensive player in the Liberty Bowl — returns. Lester Dickey is the leading contender for the other spot.

In the secondary, Powers calls left cornerback Jonnie Poe and free safety Eric Wright "as good as I've coached," and they're only juniors. Another junior, Bill Whitaker, will play right cornerback if he is sufficiently recovered from back surgery. Kevin Potter, a red-shirted freshman, will start at strong safety.

Again, Jeff Brockhaus will handle the Tigers' kicking and punting duties although Powers would prefer to find another punter so Brockhaus can concentrate exclusively on place kicking. Last year, the junior from St. Louis hit 41 of 44 extra points, five of 10 field goals and averaged 36.8 yards per punt.

Powers also promised that "all freshmen will get an opportunity" this fall. Among the top newcomers are tackles Randy Jostes, Chuck Crumbacher and Tom Hornof; tight ends Greg Krahl, Andy Giber and James Lockett; defensive backs Steve Crapo, Demetrious Johnson and Jeff Smith; running back Dave Macoubrie; and wide receivers Reco Hawkins and Steve Brown.

Additional help from freshmen may be necessary when tackling the schedule Missouri annually faces. Aside from the obvious biggies of Texas, Oklahoma and Nebraska, there are a couple of minefields Missouri will have to treat carefully.

A much-improved Ole Miss team will be dangerous in Jackson as it tries to avenge last year's 45-14 humiliation at the hands of

whenever Missouri goes to Colorado.

"I don't look at the schedule as a whole," says Powers. "You only play one game on Saturday, and you better work on that one. My job is to make sure we're ready to play every week."

This mid-August, the second-year Tiger coach began getting his charges ready for their first Saturday. Awaiting the 90-plus scholarship players and hopeful walk-ons was a new \$1.2 million renovation of and addition to the old dressing room. The improvement is being financed through a private fund-raising campaign.

"It's as nice as any football facility on the college or pro level," says John Daggett, supervisor of athletic equipment and fields.

Located next to the practice fields, the building is divided into two sections. In the north part (the renovated portion) are locker rooms for football and baseball, training and equipment rooms and a spacious shower area. The south section houses the weight room, women's softball locker room and shower, the coaches' locker rooms, and a large multipurpose room that can be partitioned. □

Women

The American Association of University Women has recognized the University for special efforts in the development of its athletic program for women.

Mizzou is one of five institutions that received certificates for outstanding programs and policies to achieve equity for women on their campuses. It was the only school to be cited in the athletics category.

In the past three years, funding of women's athletics has increased from \$80,000 to \$500,000 annually, and athletic scholarships offered to women have increased from \$7,000 in 1975, the first year they were offered, to \$100,000 a year.

of running backs and dearth of experience at wide receiver, David Newman has been moved to flanker. Junior Ken Blair could become Mizzou's big-play threat at wide receiver, and 9.3 speedster Stevie Sly will back up the wide-outs and return kickoffs.

The gaping hole in the Missouri offense is at tight end.

The graduation of All-America tight end Kellen Winslow — a first-round draft choice of San Diego — cannot be minimized. "As a coach, if you have one like him in a career, you feel fortunate," said Powers. Sophomore Tom Anderson, Winslow's backup last year, goes into August drills as the starter. But the coaches hope converted linebacker Tim Hornof adjusts quickly. And you can be sure that the freshman will be evaluated quickly.

The center position, vacated by all-Big Eight performer Pete Allard, will be filled by two-year letterman Jeff Stokowski and converted tackle Brad Edelman. To Powers' delight, the rest of the offensive line, from tackle to tackle, remains intact as tackles Howard Richards and Dave Guender and guards Stan Lechner and Mark Jones were starters last year.

In an effort to bolster a defense which ranked sixth in the conference in 1978, Powers moved senior end Kurt Petersen and sophomore noseguard Bennie Smith to the tackle spots. Those moves will give the Tigers more speed along the line. Norman Goodman will hold down the middle guard position, and the ends will be manned by Tony Green and Wendell (Sting) Ray, whom Powers says "is as good as there is

Analysis

At a luncheon for St. Louis media this summer, quarterback Phil Bradley was asked whether he thought the Tigers would continue their third-quarter conservatism. "I hope not," he replied. "You know, after all those games, coach said the same thing, 'We failed to execute.' He never said, 'I called the wrong plays.'"

Missouri in Columbia. It could be easy for the Tigers to be looking past the Rebs and ahead to the Texas game the following week. And then there's the always-dangerous November 10 trip to Iowa State, tucked between the visits by Nebraska and Oklahoma. And it's never been a picnic

Buffet

Pre-game buffets will be sponsored by the Alumni Association in the Alumni Center on Stadium Boulevard for every home game except Homecoming Oct. 27, when the luncheon will be at Hearnes. The buffets, \$5 for adults and \$2.50 for children under 12, will be served at 11 a.m. A cash bar will be available starting at 10 a.m. Advance reservations must be made by the week of the game, 132 Alumni Center, Columbia 65211, phone 882-6611.

Schedule

Sept. 8 San Diego State at Columbia
Sept. 15 Illinois at Champaign
Sept. 22 Mississippi at Jackson
Sept. 29 Texas at Columbia
Oct. 13* Oklahoma State at Columbia
Oct. 20 Colorado at Boulder
Oct. 27* Kansas State at Columbia
Nov. 3 Nebraska at Columbia
Nov. 10 Iowa State at Ames
Nov. 17 Oklahoma at Columbia
Nov. 24 Kansas at Lawrence

*Homecoming **Family Day
Home Kick Off Time 1:30 p.m.

DEFENSE

DEFENSIVE LINE

Left End			
**Anthony Green	6-2	218 Jr.	E. St. Louis, Ill.
*Ray Stephens	6-2	220 Jr.	Glen Carbon, Ill.
Chris Barton	6-4	205 Fr.	Springfield
Left Tackle			
**Kurt Petersen	6-4	240 Sr.	St. Louis
*Scott Harrell	6-3	220 Sr.	Poplar Bluff
Morton Taylor	6-4	250 Fr.	St. Louis
Randy Jostes	6-5	250 Fr.	Omaha, Neb.
Noseguard			
*Norman Goodman	6-3	225 Sr.	Metropolis, Ill.
Tony Bekemeier	6-1	227 Sr.	Arnold
*Jeff Gaylord	6-3	215 Jr.	O'land Pk., Kan.
Jerome Sally	6-3	225 So.	Maywood, Ill.
Rod Skillman	6-3	240 So.	Keytesville
Craig Evans	6-4	230 Fr.	Lebanon
Right Tackle			
*Bennie Smith	6-2½	220 So.	E. St. Louis, Ill.
Dennis Boone	6-5	242 So.	Rolla
**Jim Matthews	6-3	250 Sr.	O'land Pk., Kan.
Todd Miltenberger	6-5	260 Sr.	Monroe, Ohio
Chuck Crumbacher	6-6	225 Fr.	Alton, Ill.
Right End			
**Wendell Ray	6-3½	218 Jr.	St. Louis
David McNeel	6-3	210 So.	Greenfield
Kendall Ponder	6-3	200 So.	Iberia
Rudy Stecich	6-3	215 So.	St. Louis

LINEBACKERS

Strong-side Linebacker

Lester Dickey	6-2½	215 Jr.	Kansas City
*Ken Harlan	6-3	185 So.	Colo. Springs
Elijah Blackwell	6-1½	208 Fr.	St. Louis

Bill Busch	6-1½	210 So.	St. Louis
Jay Wilson	6-3	190 Fr.	Decatur, Ill.
Rex Weiss	6-3½	208 Fr.	St. James

Weak-side Linebacker

**Eric Berg	6-2	212 Sr.	Rolla
Ken Judd	6-2	205 So.	St. Louis
Van Darkow	6-1	195 So.	Columbia
Tom Suntrup	6-3	220 Jr.	St. Louis
Steve Hirlinger	6-3	215 Fr.	Moberly

SECONDARY

Left Corner

*Johnnie Poe	6-1	170 Jr.	E. St. Louis, Ill.
Steve Crapo	6-0	185 Jr.	Lag. Nig., Calif.
Mark Mottaz	6-1½	190 Sr.	Alton, Ill.
Dwight Bouck	5-10	180 So.	St. Louis
(J)Ron Fellows	6-0	170 Jr.	Kan. City, Kan.

Free Safety

*Eric Wright	6-2	170 Jr.	E. St. Louis, Ill.
Raymond Hairston	6-3	175 Fr.	Springfield
Jeff Rigg	5-11	175 So.	Liberty

Strong Safety

Kevin Potter	5-11	180 Fr.	St. Louis
Allan Schelp	6-1	190 Jr.	Lexington
Leo Pelek	6-0	185 So.	Roseton, City, Ill.
Jeff Smith	6-0	185 Fr.	Kan. City, Kan.

Right Corner

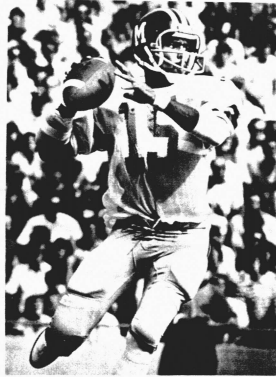
*Chip Powell	5-10	180 Jr.	St. Louis
**Bill Whitaker	6-0	175 Jr.	Kansas City
Demetrius Johnson	6-1	185 Fr.	St. Louis

PUNTER

**Jeff Brockhaus	6-3	195 Jr.	Brentwood
Ron Verrilli	5-8	170 Jr.	Ray, N.Y.



Running Back James Wilder



Quarterback Phil Bradley



Defensive End Wendell Ray



Noseguard Norman Goodman

OFFENSE

OFFENSIVE LINE

Left Tackle

*Dave Guender	6-3	265 Sr.	Berwyn, Pa.
**Wayne Washington	6-5	250 Jr.	Kansas City
Rich Wherie	6-3	230 Jr.	St. Louis
Denis Downey	6-6	260 Fr.	Stewartsville
Jim Pree	6-5	240 Fr.	St. Louis

Left Guard

**Mark Jones	6-2	235 Sr.	Arenzville, Ill.
*Kevin Sadler	6-4	220 Jr.	Joplin
Tom Hornof	6-5	225 Sr.	Creve Coeur

Center

**Jeff Stokowski	6-4	230 Jr.	Peoria, Ill.
*Brad Edelman	6-5½	240 So.	Creve Coeur
*Paul Gadt	6-1	205 Jr.	Higginsville
Tony Bruns	6-3	220 Fr.	Danville, Ill.

Right Guard

*Sian Lechner	6-3	230 Jr.	Aurora
*Chris Keller	6-3	235 Sr.	Jacksonville, Ill.
Bernard Lester	6-2	236 Fr.	Marshall
Michael Presberry	6-3	240 Fr.	St. Louis

Right Tackle

*Howard Richards	6-5	252 Jr.	St. Louis
*Don Carter	6-4	245 Sr.	Fulton
Scott Shockley	6-5	245 Fr.	O'Fallon
Jim Kulich	6-5	260 Fr.	Berwyn, Ill.

Tight Ends

*Tom Anderson	6-4	228 So.	St. Louis
Reid Stephens	6-3	210 So.	Chillicothe
*Tim Hornof	6-3	220 Jr.	Creve Coeur
*Willie Rogers	6-5	205 So.	E. St. Louis, Ill.
James Lokkette	6-5	225 Fr.	St. Louis
Greg Krahl	6-4	220 Fr.	St. Louis
Andy Glibler	6-4	215 Fr.	Grandview

WIDE RECEIVER

Split Ends

*Ken Blair	6-2	190 Jr.	Oklahoma City
Lee Wagner	6-4	195 Jr.	Colo. Springs
Tom Miller	6-2	175 So.	Omaha, Neb.
Curt Gentile	5-11½	165 Jr.	Ballwin
Steve Brown	6-3	175 Fr.	E. St. Louis, Ill.

Flanker

**David Newman	6-0	175 Sr.	Columbia
Steve Sly	6-0	180 So.	Kansas City
Jeff Chatten	6-0	190 Sr.	Jefferson City
(J)Jeff Lewis	6-2	205 Jr.	Tucson, Ariz.
Pat Duff	6-3	185 Jr.	Washington
Reco Hawkins	6-3	175 Fr.	Kirkwood

RUNNING BACK

**Gerry Ellis	6-2	220 Sr.	Columbia
*Terry Hill	5-9	172 So.	E. St. Louis, Ill.
James Scott	6-1	194 So.	Chicago
Pete Carter	5-11	175 So.	Kansas City

RUNNING BACK

*James Wilder	6-2	215 Jr.	Sikeston
*Bob Meyer	5-10	185 So.	St. Louis
Mike Richards	6-0	178 So.	Jacksonville, Ill.
Gary Forrest	6-1	205 Sr.	Webster Groves
Ron Vaughn	6-1	208 So.	Fulton
Marvin Johnson	6-0	195 Fr.	Potosi
Dave Macoubrie	6-3	200 Fr.	Chillicothe

QUARTERBACK

**Phil Bradley	6-0	170 Jr.	Macomb, Ill.
Paul Miller	6-3	203 Sr.	Farley
Mike Hyde	6-2½	200 So.	St. Louis
Keith Pappas	6-3½	213 Jr.	Chicago
(J)Dan McDaniel	6-1	194 Sr.	Jefferson City
Forrest Harrell	6-0	185 Fr.	Wichita, Kan.

KICKER

**Jeff Brockhaus	6-3	195 Jr.	Brentwood
------------------	-----	---------	-----------

*Indicates number of years lettered
(J) Indicates junior college transfer
Italics indicate freshmen

You'll Want to Hear Our Story

"The University of Missouri-Columbia is an even better place than I thought it was, and I thought very highly of it before I arrived here a year ago. I want the quality that is on our campus - and in some areas the quality is truly tremendous - to be widely recognized and understood. We're doing exciting and worthwhile things for the people of Missouri." - Chancellor Barbara S. Uehling

THE UMC EMISSARIES TELL THE MIZZOU STORY

The UMC Emissaries are a new group of 25 outstanding faculty members and speakers who enjoy presenting good programs to alumni chapters, civic clubs, Chambers of Commerce, educational groups and other appropriate organizations throughout the state of Missouri. Find out more about this interesting program. Send in the coupon below.



D.C. Blendin
veterinary medicine



Dick Boettcher
social work



Bert Boyce
informational science



Larry Brockelsby
public safety



C. Edward Carroll
library science



Gregory Casey
political science



Wayne Decker
atmospheric science



Roger A. Gafke
broadcasting



Jack Edwards
law



Rick Elam
accountancy



Cyrus Harbourt
engineering



Joseph Headley
ag econ



William Jones
English



Christopher J. Lucas
education



L.G. Morehouse
veterinary medicine



Jack Morgan
engineering



Elizabeth O'Connell
nursing



Kenneth Roering
marketing



Jerry Royer
medicine



Wendy Schiff
home economics



Bob Stewart
agriculture



Susan Taylor
nursing



Richard Tyler
law



James M.A. Weiss
psychiatry



Anna Yost
home economics

UNIVERSITY OF MISSOURI-COLUMBIA
ALUMNI ASSOCIATION

125 Alumni Center Columbia, Missouri 65211

NON PROFIT ORG.
U.S. POSTAGE
PAID
COLUMBIA, MO.
PERMIT NO. 31

Yes, my group is interested in the UMC Emissaries. Send me more information about their program.

(Name of organization)

(Name of person making request)

(Office held in organization)

(Address where information should be sent)

Mail coupon to the Office of Public Information, 329 Jesse Hall, Columbia, Mo. 65211.