

# MIZZOU

WEEKLY

University of Missouri-Columbia May 9, 1996

Mizzou Weekly will sign off for the semester and resume publication June 20.

## INSIDE the WEEKLY

Page 2: Chancellor Keisler writes about undergraduate education

Page 12: Commencement schedule

## Researcher elected to National Academy of Sciences

**M**ichael Roberts, a scientist at MU, has been elected to the highly prestigious National Academy of Sciences. Only about 60 scientists across the country are admitted into the approximately 1,800-member academy each year following a stringent nomination and election process.

"It is very gratifying to have been selected by one's peers and recognized among the top scientists in the country," said Roberts, chairman of pathobiology at the College of Veterinary Medicine and J. Fred McKenzie Distinguished Professor of Reproductive Biology at the College of Agriculture, Food and Natural Resources.

"It's a compliment, not only to myself, but to the many excellent people who have worked with me in the lab over the years and to the University administrators and colleagues who have supported and encouraged my work."

The academy is a private, non-profit society of distinguished scholars engaged in scientific and engineering research. Members, who join the academy for life, are elected in recognition of their distinguished and continuing achievements in original research, and election is considered one of the scientific community's highest honors.

Roberts' work at MU has been ground-

breaking. In 1985 he joined the faculty and helped found the nationally known Food for the 21st Century Program, which is a cooperative effort of the College of Agriculture, Food and Natural Resources; College of Human Environmental Sciences; and College of Veterinary Medicine. The program attempts to look into the future to determine what problems and constraints will face food and agriculture in the next century.

"Dr. Roberts has done path-breaking work in understanding the molecular basis for maternal recognition and acceptance of the embryo by the sheep, cow and pig," explained Roger Mitchell, dean of agriculture. "This can have a major economic significance for the economy of Missouri with large numbers of animals where high percentage birth rates can enhance profitability."

Roberts' work in leading the College of Veterinary Medicine's pathobiology department, which was created in 1995 from the merger of the veterinary microbiology and veterinary pathology departments, is laying the groundwork for future breakthroughs in identifying and potentially preventing animal disease processes, added H. Richard Adams, dean

of veterinary medicine. "We are proud to have a faculty member of such stature in a leadership role at the college," Adams said. "It benefits the entire institution when high-caliber faculty are recognized for their contributions in advancing knowledge among the scientific community."

Current grant funding for Roberts' research totals more than \$1 million from organizations including the National Institutes of Health, Procter & Gamble Pharmaceuticals and the U.S. Department of Agriculture. Past research support has been provided by the American Cancer Society, the National Cystic Fibrosis Foundation, the National Science Foundation and the American Heart Association, among others. He was named the 1992 U.S. Department of Agriculture Distinguished Scientist.

A native of England, Roberts earned a 1962 bachelor's degree in botany and a 1965 doctorate in plant physiology and biochemistry from Oxford University. He has served as a faculty member and researcher at the University of Florida and the State University of New York, and as a senior research fellow at the United Kingdom Atomic Energy Authority.

## Investing in success

### Laurie family's \$10 million gift fuels new arena

**T**he largest, single private gift ever made to MU will play a major role in the construction of a new sports arena, ushering in a new era of basketball at Mizzou.

Bill and Nancy Walton Laurie have pledged an historic \$10 million toward the construction of the new arena. The Donald W. Reynolds Alumni and Visitor Center was built as a result of a \$9 million gift from Donald Reynolds in 1990; it was the largest, single private gift previously received by MU.

In making the pledge, the Laurie family has demonstrated its long-standing support of MU through a program that impacts thousands of students, alumni and fans of the University.

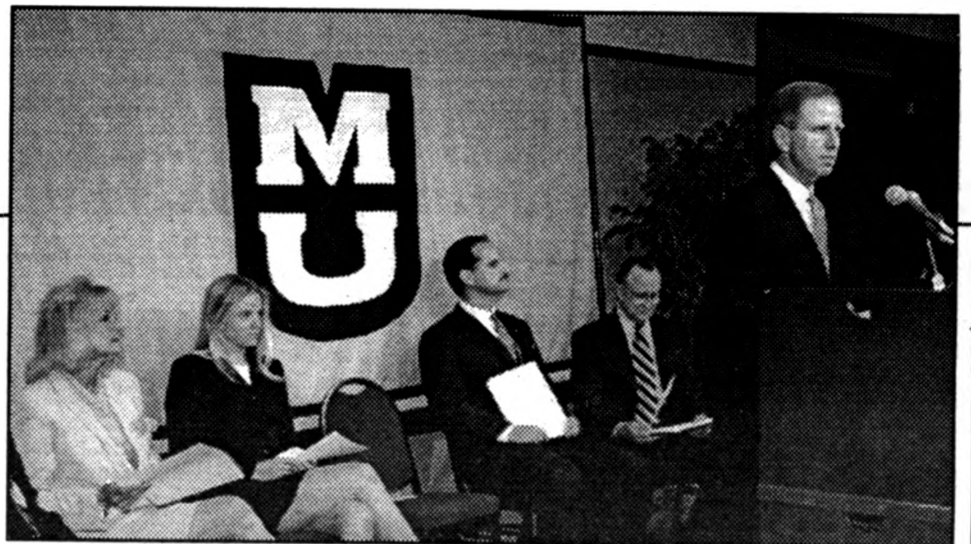
"We wanted to be among the first to lead the initiative that will provide a new venue for the Tiger basketball team, affirming its stature as one of the nation's top programs and preparing the

University for its needs of the next century," said Bill Laurie.

The Laurie gift will serve as the base for funding the arena project; additional support will come from ticket sales, other private contributions and possible revenue bonds or other sources.

"This is an exciting year for MU on many fronts," said Chancellor Charles Kiesler. "Every school, college and department at MU is striving for success and building for the future."

"Their gift will enable us to continue working toward our goal of providing a quality environment in which our student athletes can succeed," said Joe Castiglione, director of Intercollegiate Athletics. "As we begin to design this facility, our priorities will be to accommodate our loyal season ticket holders, provide new seating opportunities for students and open the door for new fans who have been unable to participate in the excitement and



Rob Hill photo

Bill Laurie announces MU's largest gift May 6 in the Reynolds Center. Seated, from left, are Nancy Laurie, Paige Laurie, Athletic Director Joe Castiglione and Fred Hall, president of the Board of Curators.

tradition of Tiger basketball."

The new arena will replace the Hearnes Center, where the Tigers have played before 96 consecutive regular-season sellout crowds, as a primary competition venue. Hearnes, still a viable event facility, will continue to play an important role in serving mid-Missouri by scheduling major special events.

"When the Hearnes Building was opened in November 1972, it gave us a chance to showcase the talent of the players in Missouri and other areas where we were recruiting," said Coach Norm Stewart. "This new building will give us an opportunity to continue to be the trendsetter in the state of Missouri

and to make sure that each individual has the best facility in which to showcase his talents."

It is anticipated the goodwill generated by a new arena will spark additional financial support for MU. "A successful sports program can result in the type of excitement that can lead to future gifts. Some of our scholarship money, for example, comes from contributions made by alumni and friends who have maintained their links to MU primarily through the intercollegiate athletics program," said Hall Jeffcoat, vice chancellor for Development and Alumni Relations.

# Chill out

**W**ith warnings on their record labels, V-chips to block them out and parents' groups discussing how to protect children from hearing and seeing them, heavy metal bands like Megadeth, Metallica and Iron Maiden may seem like cultural villains.

Yet parents shouldn't blame the bands for adolescent alienation, says Jeff Arnett, associate professor of human development and family studies. Arnett recently concluded a six-year study of heavy metal music fans, known as "metalheads." In his new book that chronicles the study, *Metalheads: Heavy Metal Music and Adolescent Alienation*, Arnett examines the basis of heavy metal's appeal to its fans and uncovers some surprising results.

Perhaps the most striking finding involves the fact that a large percentage of metalheads report listening to the music primarily when they feel angry. However, instead of inflaming their anger, the pounding rhythms of heavy metal actually have a calming effect.

Heavy metal appeals to young people who have aggressive tendencies, in part because they are able to use it as a method of releasing their aggression in a harmless way, Arnett says. The cathartic effect of the music is most evident at heavy metal concerts, which Arnett calls "the sensory equivalent of war, where headbanging and slamdancing compound the effects of the music in

providing an aggressive release."

In spite of the apparent calming effect of the music, there is reason to be concerned about what metalheads'

enthusiasm for the music reflects about their perceptions of their lives and the world they live in. In general, heavy metal music is attractive to metalheads because it articulates their beliefs that the world is a corrupt, lonely place with few consolations, Arnett found.

"I was struck again and again by the depth and pervasiveness of these kids' alienation," Arnett said of the study, which involved one-on-one interviews with more than 100 metalheads. "Many of

them were seriously alienated from their families and from school, and they were deeply cynical about the adult world they are preparing to enter."

In his book, Arnett asks, "Is there a remedy for this overwhelming sense of alienation? The answers may be for parents to involve their children more in common family life, cultivating a sense of mutual obligation and responsibility early on. This, he says, means parents must treat their adolescents as near-equal household members with not only the same rights, but also the same responsibilities shared by all.

He concludes, "The challenge for those who are disturbed by the message of heavy metal is to provide other voices — voices that will prove as compelling an argument for mutual obligation, social responsibility and interdependence as heavy metal has shown itself to be for alienated individualism."

*MU researcher finds heavy metal music calms 'metalheads'*

# FORUM

## Strengthening undergraduate education in an innovative curriculum

By Chancellor Charles Kiesler

A recent study by the National Association of Scholars found little to praise about the state of higher education in the United States. Association president Stephen Balch and research director Rita Zurcher shared their views in an opinion piece distributed to newspapers across the country, including Missouri.

It is Balch and Zurcher's opinion that U.S. colleges keep charging more while teaching less. To make their case, they cite their study's examination of changes in bachelor degree requirements during an 80-year period at 50 American colleges and universities. Their conclusion: "For most of this century, America's leading colleges and universities were strongly committed to providing undergraduates with a broad and rigorous education. During the last 30 years, this commitment has largely vanished."

Strengthening undergraduate education is the cornerstone of our commitment to students. Keeping the needs of students in mind, MU is revamping its general education requirements — the courses all students must take. The new approach fosters those skills which employers say are crucial to success: critical thinking;

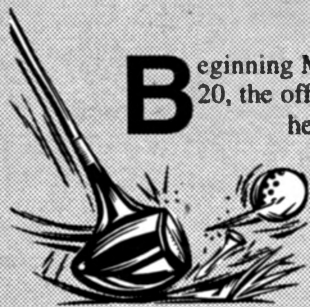
broad understanding of one's field; and strong communications skills, particularly writing ability. In revamping our general education architecture, as it is called, our faculty are asking the important question, "should all students, regardless of major, be required to take the same introductory courses?" The answer is no, and the general education architecture provides MU students a sound educational foundation in the liberal arts and sciences while encouraging an enhancement of traditional degree plan offerings.

In contrast to the intellectually bleak picture painted by Balch and Zurcher, MU's new curriculum for undergraduates contains much of what has been traditionally valued in education with a thoughtfully evolving concept of basic university education in the late 20th century. Currently, MU undergraduates are required to take English 20, which stresses writing as a process involving critical reading and thinking skills; two writing-intensive courses, one of which is an upper-division course in the student's degree program; Math 10, college algebra; a math reasoning proficiency course which requires the student to use mathematical skills or reasoning in particular areas of disciplinary interest; and a course in American history or government.

Additionally, students are required to complete nine hours of course work in each of two areas outside the general area of their major. The three areas are the social and behavioral sciences, the physical and biological sciences, and humanistic studies and fine arts. These 18 hours must include an approved "cluster," a specifically designed sequence of three courses that provides students with coherence, breadth and depth in one area. Students who are not majoring in the physical and biological sciences must also complete a laboratory science course.

See education, Page 8

# Offices adopt summer hours



**B**eginning Monday, May 20, the offices listed here will move to summer hours. Regular hours will resume on Monday, Aug. 12.

### 7:30 a.m.-4 p.m.

Academic Support Center  
Accounting Services  
Aerospace Studies  
Agricultural Economics  
Anthropology  
Art  
Art History and Archaeology  
Arts and Science Advisement Center  
Arts and Science Dean's Office  
Assessment Resource Center  
Business and Public Administration:  
Associate Dean for Undergraduate Programs  
Career Services  
Copy Center  
Finance  
Management  
Marketing  
Public Administration  
Fiscal Office

Graduate Studies  
Missouri Institute for Executive Development  
Missouri Training Center  
Research Center  
School of Accountancy  
Small Business Development Center  
Undergraduate Programs  
Business Services  
Center for Independent Study  
Community Development  
Conference Office  
Extension and Ag Information  
Vice Provost for Extension  
Extension Teaching  
Geological Sciences  
General Education Program  
German, Russian and Asian Studies  
Health Related Professions:  
Director's Office  
Student Affairs  
Radiologic Sciences  
Respiratory Therapy  
Honors College  
Human Environmental Sciences:  
Dean's Office  
Human Development and Family Studies  
Consumer and Family Economics  
Environmental Design  
Human Environmental Sciences  
Extension:

Consumer and Family Economics Extension  
Environmental Design Extension  
Food Science and Human Nutrition Extension  
Human Development and Family Studies Extension  
Textile and Apparel Management Extension  
Human Resource Services  
International Center  
Journalism:  
Editorial Department  
Graduate Studies Center  
Laboratory Animal Medicine  
Labor Education  
Learning Center  
Mathematics  
School of Natural Resources:  
Director's Office  
Forestry  
Soil and Atmospheric Sciences  
Sinclair School of Nursing  
Parking and Transportation Services  
Physics and Astronomy  
Plant Sciences Unit  
Procurement/Materials Management  
Psychology  
Program for Excellence in Teaching  
Religious Studies  
Sociology  
Statistics

Telecommunications  
Veterinary Biomedical Sciences  
7:30 a.m.-4:30 p.m.

History  
School of Nursing, Office of Research  
School of Nursing, Word Processing  
Social Work

### 7:30 a.m.-5 p.m.

Vice Chancellor for Administrative Services  
Admissions and Registration:  
Admissions  
Director of Admissions and Registrar  
International Admissions/Residency  
High School and Transfer Relations  
Registration  
Transcripts and Records

Campus Computing  
Campus Writing Program  
Chemical Engineering  
Office of the Provost  
Student Financial Aid

### 8 a.m.-4:30 p.m.

English  
Geography  
School of Nursing, Student Affairs  
Occupational Therapy  
Physical Therapy  
Rural Sociology

**ADAPT PROGRAM IS A WINNER**

MU's alcohol awareness program for students has been named one of the top four programs in the country. The U.S. Department of Education selected the ADAPT program --an acronym for Alcohol and Drug Abuse Prevention Team -- after reviewing programs at hundreds of other schools.

ADAPT works to increase the awareness of problems associated with substance abuse and to decrease student drinking and drug use by offering peer education, workshops, research and other

activities. For nine out of the past 10 years it has been recognized as one of the top 10 programs in the country. Kim Dude, ADAPT coordinator attributes that success to student participation. "This program is completely student driven, and we're always evaluating ourselves and determining ways to improve," Dude says.

**GENCARE OFFERS INSURANCE CHECKUP**

Have a question about your health insurance? Representatives from GenCare, the company that administers the University's medical insurance plans, will be on

campus May 16 to meet individually with employees and answer questions about HMO or POS medical plan options. The representatives will be at two locations on campus: From 10 a.m. to 1 p.m. they will be in S206 Memorial Union. From 2 to 4 p.m. they will be at University Hospital personnel office.

**C. BRICE RATCHFORD HONORED FOR EXTENSION WEEK**

Gov. Mel Carnahan recently designated the third week in May as Extension Week around the state of Missouri to recognize the

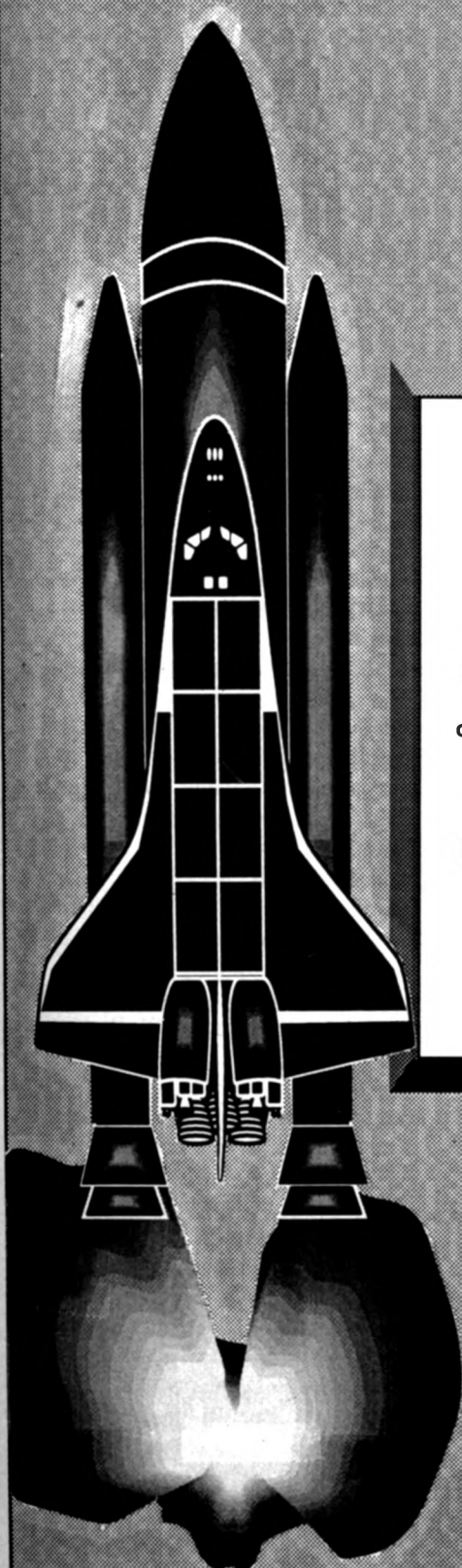
contribution University Outreach and Extension makes to citizens statewide. County extension councils across the state are planning local events to mark the week.

On the Mizzou campus, the University community is invited to participate in a ceremony and reception to honor C. Brice Ratchford, who was president of the University of Missouri from 1971 to 1976, and director, dean and vice president for extension from 1959 to 1970. The event will be held from 3-5 p.m. May 21 in the Great Room of the Reynolds Alumni and Visitor Center. A brief ceremony will begin at 3:30 p.m.

**HAVE AN ITEM FOR THE SUMMER SEMESTER CALENDAR?**

You still have a few weeks, but it's not too early to start rounding up those calendar items and sending them in to Mizzou Weekly. The summer semester calendar will be published in the first issue of the summer, June 20. Calendar items should be sent to *Mizzou Weekly* calendar, 407 Reynolds Center by June 10.

# MCCU savings rates are soaring!



**Savings rates**

**4.59%** APY  
on balance of \$40,000 or more

**4.07%** APY  
on balances of \$20,000 to \$39,000

Rates effective 5/1/96

**Prime Share Savings**

**Special Savings**

**Kirby Kangaroo Club**

**New Attitudes Savings**

When your balance is	you'll earn
\$40,000 or more	4.59% APY
\$20,000 to \$39,999.99	4.07% APY
\$ 5,000 to \$19,999.99	3.14% APY
\$ 0 to \$ 4,999.99	2.63% APY

on every penny!

APY represents the annual percentage yield



**MIZZOU CREDIT UNION®**

*...meeting our members' needs*

First & Broadway  
P.O. Box 1795  
Columbia, MO 65205-1795  
874-1477  
1-800-451-1477  
Fax 874-1300

Faculty, Staff, Students and their Families are eligible to join.  
Call For Membership Eligibility Requirements Today

## Q&A

**Q** An article in the May 2 edition of *Mizzou Weekly* about campus parking issues talked about the proposed student parking garage on Hitt Street. It said faculty and staff parking fees will be raised by \$1 a month next fall while students will only pay \$7 a semester. That doesn't seem fair to me.

**A** Students pay the same amount for parking as faculty and staff -- \$12 a month for surface lots and \$15 a month for parking garages.

Those fees will go up by a dollar a month next fall. Students pay \$26 a semester to park in commuter lots near the Hearnes Center and the Trowbridge Center.

The \$7 per semester fee mentioned in the article is a special activity fee that all students will pay.

The money generated by the fee will be dedicated to the construction of a campus parking garage.

## MIZZOU WEEKLY

Volume 17 Number 29

A publication for University of Missouri - Columbia faculty and staff, published every Thursday during the academic year and twice a month during the summer by Publications and Alumni Communication, a department of University Affairs, 407 Reynolds Alumni and Visitor Center, 882-7357. News deadline is noon Thursday the week before publication. Annual subscriptions are available for \$20.

Interim editor: . . . . . John Beahler  
Interim graphic editor . . . . . Sue Richardson  
Director of advertising . . . . . Tanya Stitt  
Staff writers: . . . . . Sara Grier, Sue Richardson  
Student assistants . . . . . Christie Studdard  
. . . . . and Tamorro Wilkins



Printed with soy ink on recycled newsprint containing 90 percent to 100 percent post-consumer waste.



# Books by faculty

This is a list of books by MU faculty published between Sept. 1, 1994 and Aug. 31, 1995.

## ■ Agriculture, Food & Natural Resources

### Agronomy

Nelson, C. Jerry, Curators' Professor; Barnes, Robert F. and Miller, Darrell A.: Editors. (1995). *Forages: An Introduction to Grassland Agriculture*. (5th ed.). Ames, Iowa: Iowa State University Press

Nelson, C. Jerry, Curators' Professor; Barnes, Robert F. and Miller, Darrell A.: Editors. (1995). *Forages: The Science of Grassland Agriculture*. (5th ed.). Ames, Iowa: Iowa State University Press.

Sleper, David A., professor of agronomy; Poehlman, J.M., professor emeritus, deceased. (1995). *Breeding Field Crops*. (4th ed.). Ames, Iowa: Iowa State University Press.

### Food Science and Human Nutrition

Cotterill, O.J., professor emeritus; Stadelman, W.J., senior editor. (1995). *Egg Science and Technology*. (4th ed.). Binghamton, N.Y.: Haworth Press.

Hedrick, H.B., professor emeritus; Aberle, E.D.; Forrest, J.C.; Judge, M.D., and Merkel, R.A. (1994). *The Principles of Meat Science*. (3rd ed.). Dubuque, Iowa: Kendall/Hunt Publishing.

### Parks, Recreation and Tourism

Crawford, Michael E., associate professor, and Austin, David: editor. (1996). *Therapeutic Recreation: An Introduction*. (2nd ed.). Boston, Mass: Allyn and Bacon.

### Rural Sociology

Bonanno, Alessandro, associate professor, and Constance, Douglas (1995). *Caught in the Net: The Global Tuna Industry, Environmentalism and the State*. Lawrence, Kan: University Press of Kansas.

Bonanno, Alessandro, associate professor: editor. (1994). *La Globalización Del Sector Agroalimentario*. Madrid Spain: Ministerio De Agricultura Pesca Y Alimentación.

Rikoon, Sandy, research associate professor, editor. (1995). *Rachel Calof's Story: Jewish Homesteader on the Northern Plains*. Bloomington, Ind: Indiana University Press.

## ■ Arts and Science

### Anthropology

Wood, W.R., professor of anthropology; research professor of American archaeology; O'Brien, Michael J., associate dean of arts and science, director of American archaeology and professor; Murray, Katherine K. and Rose, Jerome C. (1995). *Holocene Human Adaptations in the Missouri Prairie-Timberlands*. Fayetteville, Ark:

Arkansas Archaeological Survey Research Series (No. 45).

### Art History and Archaeology

Land, Norman E., professor, editor. (1994). *The Viewer As Poet: The Renaissance Response to Art*. University Park, Pa: The Pennsylvania State University Press.

Marshall, Howard Wight, professor and chairman, (1995). *Paradise Valley, Nevada: The People and Buildings of an American Place*. Tucson, Ariz: University of Arizona Press.

### Biological Sciences

vom Saal, Frederick, professor; Parmigiani, S. and Svare, B. (1994). *Protection and Abuse of Infants*. London: Harwood Academic Press.

vom Saal, Frederick, professor; Parmigiani, S. (1994). *Infanticide & Parental Care in Animals and Humans*. London: Harwood Academic Press.

### English

Bernard-Donals, Michael, assistant professor, (1994). *Mikhail Bakhtin: Between Phenomenology and Marxism*. Cambridge, UK: Cambridge University Press.

Camargo, Martin, professor, (1995).

*Medieval Rhetorics of Prose*. Binghamton, N.Y.: Medieval & Renaissance Texts and Studies.

Foley, John Miles, Byler Professor of English and classical studies, (1995). *The Singer of Tales in Performance*. Bloomington & London: Indiana University Press.

Horner, Winifred Bryan, professor emeritus; Leff, Michael, editors (1995). *Rhetoric & Pedagogys: Its History, Philosophy and Practice*. Mahwah, N.J. and Hove, UK: Lawrence Erlbaum Associates.

Hunt, Douglas, associate professor, (1994). *The Riverside Guide to Writing*. (2nd ed.) Boston, Mass: Houghton.

Lago, Mary, professor emeritus, (1995). *E. M. Forster: A Literary Life*. Macmillan (England) / and St. Martins Press, (New York City).

Okker, Patricia, assistant professor, (1995). *Our Sister Editors: Sarah J. Hale and the Tradition of Nineteenth-Century American Women Editors*. Athens, Ga: University of Georgia Press.

Quirk, Tom, professor; Scharnhorst, Gary, editors. (1995). *American Realism and The Canon*. Newark, Delaware: University of Delaware Press.

Ragland, Ellie, professor, (1995). *Essays on the Pleasures of Death: From Freud to Lacan*. New York, N.Y.: Routledge.

### Geography

Hobbs, Joseph J., associate professor, (1995). *Mount Sinai*. Austin, Texas: University of Texas Press.

### History

Flader, Susan L., professor, (new edition 1994). *Thinking Like a Mountain: Aldo Leopold and the Evolution of an Ecological Attitude Toward Deer, Wolves and Forests*. (2nd ed. with new preface). Madison Wis: University of Wisconsin Press.

Neth, Mary C., assistant professor, (1995). *Preserving the Family Farm: Women, Community and the Foundations of Agribusiness in the Midwest 1900-*

1940. Baltimore, Md: John's Hopkins University Press.

Timberlake, Charles E., professor, (1995). *The Fate of Russian Orthodox Monasteries and Convents Since 1917*. Seattle, Wash: University of Washington Press.

Whites, Leann, associate professor, (1995). *The Civil War as a Crisis in Gender*. Athens, Ga: University of Georgia Press.

### Romance Languages

Sullivan, Henry W., professor, (1995). *The Beatles With Lacan: Rock 'n' Roll as Requiem for the Modern Age*. New York, N.Y.: Peter Lang.

### Sociology

Gallihier, John F., professor; Gallihier, James M. (1995). *Marginality & Dissent in 20th Century American Sociology*. Albany, N.Y.: SUNY Press.

Lo, Clarence, associate professor, (1995). *Small Property vs. Big Government*. Berkeley & Los Angeles, Calif: University of California Press.

Neitz, Mary Jo, professor, (1995). *Sex, Lies, Sanctity: Religion & Deviance in Contemporary America*. Greenwich, Conn: JAI Press.

### Statistics

Basu, Asit, professor; Balakrishnan, N., editors. (1995). *The Exponential Distribution: Theory, Methods & Applications*. Newark, N.J.: Gordon & Breach.

### Theatre

Clark, Larry, professor and dean; McGraw, Charles (1995). *Acting is Believing*. (7th ed.). Fort Worth, Texas: Harcourt, Brace and Company.

## ■ Business and Public Administration

### Accountancy

Nikolai, Loren A., Ernst & Young Distinguished Professor of Accountancy; Bazley, John D., and Grove, Hugh D. (1995). *Financial Accounting: Concepts and Uses*. (3rd ed.). South Western Publishing Company.

Wilson, Earl R., KPMG Peat Marwick/Joseph Silvano Distinguished Professor of Accountancy; Hay, Leon E. (1995). *Accounting for Governmental and Nonprofit Entities*. (10th ed.). Burr Ridge, Ill: Richard D. Irwin Inc.

### Finance

Jordan, Bradford, associate professor; Ross, S.A., and Westerfield, R.W. (1995). *Fundamentals of Corporate Finance*. (3rd ed.). Burr Ridge, Ill: Richard D. Irwin Inc.

Jordan, Bradford, associate professor; Christensen, M.J., Ross, S.A., Thompson, S.C. and Westerfield, R.W. (1995). *Fundamentals of Corporate Finance*. (1st ed. Australian). Burr Ridge, Ill: Richard D. Irwin Inc.

## ■ Education

### Curriculum and Instruction

Reys, Robert, professor; Nohda, N., editors. (1994). *Computational Alternatives for the 21st Century: Perspectives from Japan and the United States*. Reston, Va: National Council of Teachers of Mathematics.

Reys, Robert, professor; Lindquist, M.

# Cups, Cups and More Cups!



Stk #1001 \$8.90/cs • Stk #1002 \$10.67/cs • Stk #1002A \$15.59/cs

White • Styrofoam • Sold by the Case of 1,000

9-ounce and 12-ounce

**Coca-Cola** cups



Paper Cups; Sold by the Tube of 100  
Sold as a Special

available through General Stores: 882-6906

and Sydam, M. (1995). *Helping Children Learn Mathematics*. (4th ed.). Needham Heights, Mass: Allyn & Bacon.

Wright, Michael, assistant professor, (1995). *Resources for Energy-Related Technology Education*. Washington, D.C: United States Department of Energy.

**Educational Leadership and Policy Analysis**

Valentine, Jerry, professor; Clark, Donald, Irvin, Judith, and Keefe, James (1994). *Leadership in Middle Level Education Volume II. Leadership in Successful Restructuring Middle Level Schools*. Reston, Va: National Association of Secondary School Principals.

**Engineering**  
**Civil Engineering**

Misra, Anil, assistant professor; Chang, Ching S., editors. (1995). *Mechanics of Materials with Discontinuities and Heterogeneities*. (AMD-Vol 201). New York, N.Y: American Society of Mechanical Engineers.

**Electrical and Computer Engineering**

Engel, Thomas Greg, assistant professor; Cohen, Herbert, and Lehr, F. Mark, editors. (1995). *Spear II-High Power Space Insulation*. Lubbock, Texas: Texas Tech University Press.

**Nuclear Engineering**

Erkens, Jeff W., research professor, editor. (1995). *Laser Isotope Separation*. (Milestone Series MS113). Bellingham, Wash: SPIE Optical Engineering Press.

**Human Environmental Sciences**

**Environmental Design**

Brent, Ruth S., professor; Schwarz, Benjamin, assistant professor, editors. (1995). *Popular American Housing*. Westport, Conn: Greenwood Press.

**Food Science and Human Nutrition, Dietetics Education**

Hoover, Loretta W., professor, editor. (1994). *Nutrient Data Bases: Responding to Trends and Technologies*. Washington, D.C: ILSI Press.

**Human Development and Family Studies**

Demo, David H., associate professor; Acock, Alan C. (1994). *Family Diversity and Well-Being*. Thousand Oaks, Calif: Sage.

Demo, David H., associate professor; Ambert, Anne-Marie (1995). *Parents and Adolescents in Changing Families*. Minneapolis, Minn: National Council on Family Relations.

Ispa, Jean, associate professor, (1994). *Child Care in Russia: In Transition*. Westport, Conn: Bergin & Garvey.

**Textile and Apparel Management**

Dickerson, Kitty, professor, (1995). *Textiles & Apparel in the Global Economy*. Prentice-Hall.

**Medicine**

**Health Services Management**

Boles, Keith E., associate professor; Neumann, Bruce R. and Suver, James D. (1995). *Management Accounting for Healthcare Organizations*. (4th ed.). Chicago, Ill: Pluribus Pres, Inc.

**Internal Medicine**

Khanna, Ramesh, professor; Nolph, Karl D., director of nephrology; Broaddus Distinguished & Curators' Professor of Medicine; Prowant, Barbara, resident associate, and Twardowski, Zbylut, editors. (1995). *Advances in Peritoneal*

*Dialysis/1995*. (Vol. 11). Toronto, Canada: Multimed Publications Inc.  
Weber, Karl T., professor and chairman of internal medicine; director of cardiology, editor. (1995). *Wound Healing in Cardiovascular Disease*. Armonk, N.Y: Futura Publishing Co. Inc.

**Missouri Institute of Mental Health**

Wedding, Danny, professor, director; Corsini, R.J., editors. (1995). *Current Psychotherapies*. (5th ed.). Itasca, Ill: Peacock.

Wedding, Danny, professor and director, editor. (1995). *Behavior and Medicine*. (2nd ed.). St. Louis, Mo: Mosby.

Wedding, Danny, professor and director; Corsini, R.J., editors. (1995). *Case Studies in Psychotherapy*. (2nd ed.). Peacock, Ill: Peacock.

**Molecular Microbiology and Immunology**

Barrett, James T., professor emeritus, (1995). *Microbiology and Immunology Casebook*: Little, Brown & Co.

**Pathology**

Dix, Jay, associate professor, (1994). *Attorney's Handbook of Forensic Pathology and Death Investigation*. Columbia, Mo: MU School of Law.

Dix, Jay, associate professor, (1995). *Case Studies in Forensic Pathology*. Columbia, Mo: MU Department of Pathology.

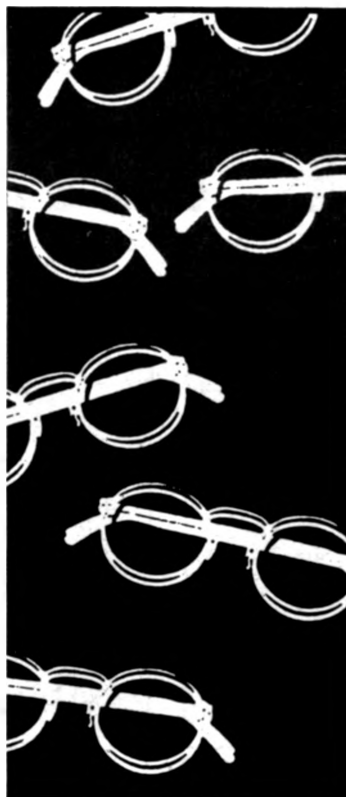
**Veterinary Medicine**

**Veterinary Biomedical Sciences**  
Adams, H. Richard, dean and professor, editor. (1995). *Veterinary Pharmacology and Therapeutics*. (7th ed.). Ames, Iowa: Iowa State Press.

**Veterinary Medicine and Surgery**  
Coward, Ross P., associate professor, (1995). *An Outline of Swine Diseases: A Handbook*. (1st ed.). Ames, Iowa: Iowa State University Press.

**Veterinary Pathology**

Wagner, Joseph E., professor; Harkness, John E., editors. (1995). *The Biology and Medicine of Rabbits and Rodents*. (4th ed.). A Lea & Febiger Book, published by Williams & Wilkins, a Waverly Company.



**University Optical**

For all your eye-wear needs.

- Fashion frames for glasses and sunglasses including Polo, Vogue, Giorgio Armani and Brooks Brothers
- Frames for babies and children
- Expertise in frame repairs
- Eye exams available through the Mason Eye Institute
- Discounts for University of Missouri employees, retirees and students, and Veterans' Administration employees

Open 9 a.m. to 5 p.m.,  
Monday through Friday  
(573) 884-7710

For eye exams, please call (573) 882-1506

University Optical is located in Mason Eye Institute in the lobby of University Hospital and Clinics. J.C. Baker, optician.

Stay up late. ★

Hitt Street Market is open 24 hours a day through finals week.

Summer Hours

Open 7 days a week 11 a.m. - 11 p.m.

HITT STREET Market

SUBWAY

Pershing Commons

Looking for a bargain?

**IT'S BACK!**

**May 13, 14 & 15**  
**9 a.m. - 4 p.m.**  
**All sales final**

**Sale on the sidewalk outside the north entrance to Brady Commons**  
In case of rain sale will be moved to the walkway inside Brady.

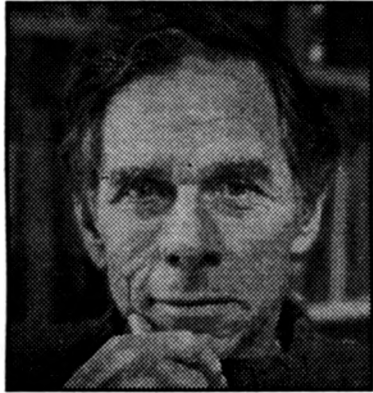
**UNIVERSITY BOOKSTORE** University owned and operated since 1899.

**Save UP TO 90% SAVINGS SPECTACULAR**

Main Level Brady Commons  
882-7611 TDD: 882-3985  
M-Thurs: 8-7, F: 8-5, Sat: 10-5

MU Faculty/Staff/Retirees 10% discount not available on sale items.

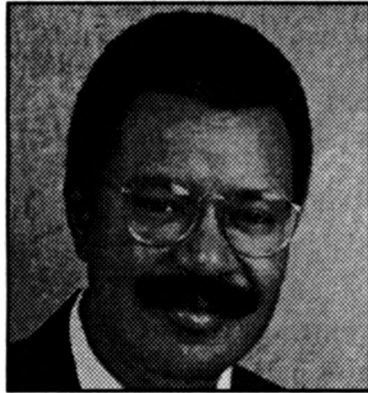
# HEAD OF THE CLASS



**James Atwater**

*Former Professor and Dean of Journalism*

**Byler Distinguished Professor Award**



**Nathaniel Brickens**

*Associate Professor of Music*

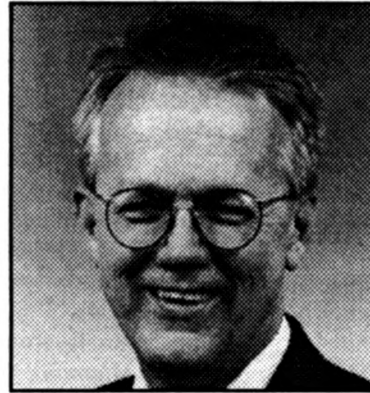
**Provost Outstanding Junior Faculty Teaching Award**



**Patricia Crown**

*Professor of Art History and Archaeology*

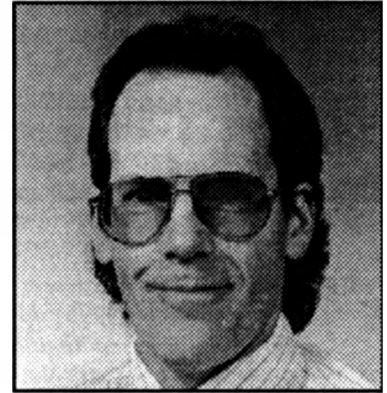
**Alumnae Anniversary Faculty Award**



**Roy Fox**

*Associate Professor of Education*

**Maxine Christopher Shutz Award and Lecture for Distinguished Teaching**



**David Geary**

*Associate Professor of Psychology*

**Chancellor's Award for Outstanding Research and Creative Activity in the Behavioral and Social Sciences**

**W**hen thinking of the late James Atwater, former dean and professor of journalism for 12 years, it's difficult to decide which was most impressive — his outstanding professional accomplishments or his outstanding personality. His list of accomplishments are staggering: writer and senior editor for *Time* magazine and *The Saturday Evening Post*, writer for *Reader's Digest*, special assistant to President Richard Nixon, dean of the School of Journalism where he founded the science journalism center and established the Multicultural Management Program

On top of all this, he was an outstanding teacher in the eyes of students and faculty alike. Student evaluations reflect his success as a teacher. His scores were consistently high and often a full point higher than the department average, especially in the areas of satisfaction with course and instructor. "I have made more progress this semester as a writer than during my entire previous life," says one student. Don Ranly, professor of journalism, says that Atwater's personality made him a great teacher. "His enormous sense of humor, his wonderful self-deprecating demeanor, his incredible appreciation of life and all of its dimensions — from the humblest sports to the most eloquent literature and artistic works — all of this is what his students and colleagues see and appreciate."

**N**athaniel Brickens' excellence in the classroom shows up in two areas: studio teaching and ensemble teaching. Brickens came to MU in 1992 to teach applied music lessons in trombone, euphonium and tuba; to set up and conduct the trombone choir; and to teach a low brass techniques course to students in music education.

Since his arrival, the trombone enrollment has increased so much, and the choir has become such a first-class performing group that Brickens has had to relinquish some of his teaching duties. "We had hoped that this development would occur," says a colleague, "but few of us thought that it would happen so quickly."

Brickens not only teaches trombone — he does it, too, performing as a soloist or with orchestras across the country. His students consistently win top honors in national competitions, including those held by the International Trombone Association. They credit their accomplishments to Brickens being an ideal role model and a world-class musician and teacher.

Before Brickens, there was no trombone choir. Now 30 members strong, the ensemble has brought national attention to MU. "The choir has developed from rather modest beginnings to a first-rate performing ensemble," says an associate.

**E**ven though Patricia Crown has spent nearly two decades teaching at MU, it wasn't until 1993 that she was able to convince her colleagues that the art history curriculum needed a course on women.

As a result, she designed and is teaching Women, Art and Society 1700-1950. The course focuses on how women are represented in the arts in the 18th and 19th centuries, as well as introduces women artists who have traditionally been overlooked by art historians. So far, this is the only course in the department that is devoted to making women visible as artists and as representations. Crown also teaches a seminar on the 18th-century English artist William Hogarth and his images of women. Most recently she served as guest curator of an exhibition at the Huntington Library in San Marino, Calif., of Hogarth's and his contemporaries' depictions of women. "Crown's having been invited to organize the exhibit from holdings of such an important collection and research library as the Huntington, testifies to the high esteem in which her scholarship is held," says a colleague.

The greatest reward of Crown's career is her students, she says. "I've had some really good students. They've done well and are successful. Some have become art historians, and others have written about and studied women in art and society. All of them, undergraduates and graduates, have been terrific."

**O**ne reason that Roy Fox is a popular and successful teacher at MU is his ability to personalize his teaching. The door of his office is covered with messages for his students: Notes that papers have been graded and are ready to pick up; reminders about appointments or conferences.

His students say that Fox, professor of education, focuses on each of them as an individual.

"He offers a variety of ideas for his students to consume or reject, according to their own tastes and abilities," says a current student. "Above all, what he offers is truly in the spirit of giving — without ego he imparts his experience, his creativity and his advice, one teacher to another."

Fox is responsible for training future English teachers to teach language, literature and composition. As director of the Missouri Writing Project, he works with experienced teachers to help them become superior teachers of the English language. Language and thinking, Fox says, primarily develop from actively using language in purposeful, specific contexts.

"Roy works at creating a positive climate in his classes," a colleague says. "The structure of his classes encourages students to take academic risks, discuss and get involved. There is a sense of purpose and warmth."

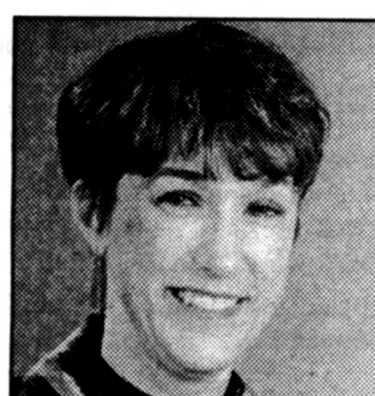
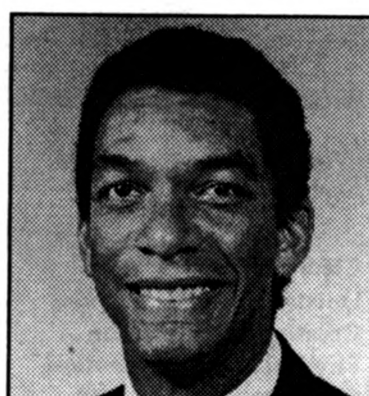
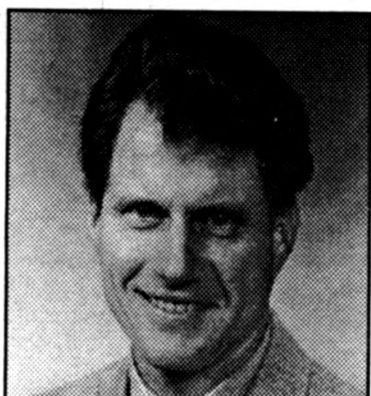
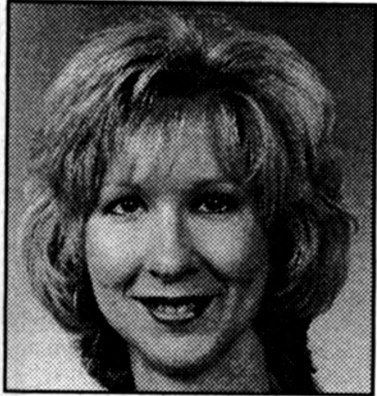
**A**ll minds are not created equal when it comes to understanding math, and David Geary is trying to figure out why. For his research on the development of numerical and mathematical cognitive abilities throughout life, Geary received the Chancellor's Award for Outstanding Research and Creative Activity.

A pioneer in the field, he was the first to apply theoretical models of normal cognitive development to study learning disabilities in math, as well as cross-national achievement in math and the issue of cognitive aging. Geary discovered that the methods for learning math are the same for people across cultures. Through his research of math disabilities, he found a distinct and hereditary memory disorder that conflicts with a person's ability to learn math.

In addition, Geary's cross-cultural research uncovered the fact that teaching philosophies affect the way children learn. He found that while Chinese and American students use the same types of problem-solving skills, Chinese children are developmentally advanced. This advantage is due to the schooling philosophies in China.

The National Institute of Child Health and Human Development funds Geary's research. His work is exemplified in his widely acclaimed book published in 1994 by the American Psychological Association, *Children's Mathematical Development: Research and Practical Applications*.

**Recipients of the 1996 faculty awards may be from different disciplines on different parts of campus. However, they share one quality: They're all numbered among the best in their fields.**



**Susan Henson**

*Instructor in Textile and Apparel Management*

**Provost Award for Creative Extension Programming by New Faculty**

**Doris Littrell**

*Director of Extension Teaching*

**Provost Award for Outstanding Achievement in Extension and Continuing Education**

**Mark Newcomb**

*Assistant Professor of Animal Sciences*

**Provost Award for Creative Extension Programming by New Faculty**

**Aaron Thompson**

*Assistant Professor of Human Development and Family Studies*

**Provost Outstanding Junior Faculty Teaching Award**

**Kathy Thornburg**

*Professor of Human Development and Family Studies*

**Alumnae Anniversary Faculty Award**

**W**hen Susan Henson came to MU in 1992 and began coordinating the textile and apparel management extension program, she had her work cut out for her. The department decided to restructure the program and focus more on the textile industry in Missouri after discovering that apparel manufacturing is Missouri's eighth largest manufacturing employer. The department decided to hire someone with the combination of a business background and a strong education. Henson met these qualifications, and she was hired to bridge the gap between the academics and the industry of textile and apparel management.

To accomplish this, Henson made contacts with representatives from the Missouri legislature, industry and education. She formed associations such as the Missouri Association of Sewn Products Manufacturers and the Missouri Home-Based Business Association. She participates in industry expositions and international trade shows, and plans educational programs.

To draw in potential contracts, she writes and publishes a directory for the Missouri Textile and Apparel Center every 18 months. The directory creates a system of networking among firms. She also travels around the world to places such as Japan on trade missions. Henson's colleagues describe her as "innovative," and a "trailblazer," for her work in the department.

**T**he old adage that it takes one to know one may be true for Doris Littrell, director of extension teaching. Because she earned both her undergraduate and graduate degrees as a non-traditional student, she is well-equipped to encourage other adult students to get involved in continuing education because she has been in their shoes. "Doris has not only provided excellent professional support, but she has been a source of strength," says Beverly Coberly, human development specialist.

In the eight years since Littrell began working at MU, she has increased the program's budget and its reach. Under her guidance, the extension teaching income increased more than \$900,000 since 1988, and less than 20 percent of the income supports teaching operations.

Her biggest impact on extension teaching is her commitment to expanding the number of courses offered. She has so far increased the number from 118 to 220, and has included graduate degree programs in nursing, library sciences and food sciences. Extension Teaching now offers evening and weekend courses, and is enrolling more than 500 students each semester. Through the use of satellites and fiber optics, extension teaching offers courses to students on each of the four University of Missouri campuses.

**T**o Mark Newcomb, assistant professor of animal sciences, eating like a pig is no laughing matter. He has his PhD in swine nutrition and is a state swine specialist. His overriding objective is to improve the profitability of Missouri's hog industry by improving feeding programs and production technology. To accomplish this, he works with area livestock agents on research trials and demonstrations. He also implemented a statewide computer program that helps hog producers make decisions about feeding programs.

Newcomb was one of four consultants from MU who met with the Environmental Protection Agency to update and revise the guidelines regulating the materials used in animal diets.

He also works one-on-one with hog producers to troubleshoot problems found on an individual level. He analyzes rations and explores other options to help keep costs down. To reach a wider audience and to keep hog producers up-to-date with new developments, Newcomb writes a newsletter, *Mizzou Pork Pages*. He also contributes to the *Pork Producer*, a quarterly publication of the Missouri Pork Producers Association. With all of this involvement, it's easy to see why Bruce Lane, extension livestock specialist says: "I can honestly say that our producers would not trade Dr. Newcomb for anyone, and I feel the same."

**E**ducation is an important weapon against discrimination, and in Aaron Thompson's classes students learn the importance of discussing and examining their own prejudices, attitudes, beliefs and biases. His courses on *The Black Family* and *The Multicultural Study of Children and Families*, which are included in the general education cluster *The Changing American Family*, focus on various American ethnicities and family forms, including African American, Hispanic, Asian American, American Indian, gay and lesbian, and dual working families. *The Black Family* is Thompson's favorite. It's a challenge to teach, he says, because the majority of the students are middle-class Caucasians. "Many of the beliefs that have been formed about the black and other minority families come through fiction, not fact," he says. "Encouraging students to challenge their socialization and to become critical thinkers can be quite an undertaking by a black faculty member."

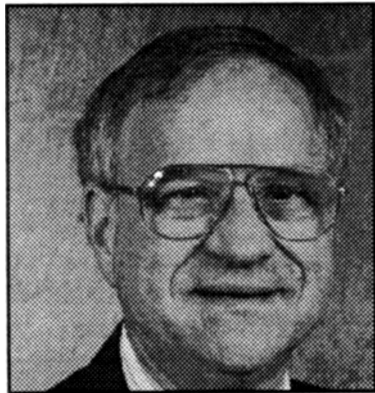
Students say Thompson has a knack for teaching how to learn rather than what to learn, as well as for making sure students are recognized for their contributions and welcomed into an environment conducive for learning. Echoes a colleague: "Dr. Thompson truly has an important mission in his life — the teaching of respect for individuals and families of diverse backgrounds. Because he is a model of that attitude, he has been very effective in that regard."

**K**athy Thornburg has had a big impact on the MU campus. As director of the Child Development Lab, Thornburg, professor of human development and family studies, has touched the lives of hundreds of area families. The preschool and child care center has been ranked in the top 10 nationally by *Child* magazine. Students say that she has such an enthusiasm for her subject that her classes are always filled.

But Thornburg has made an impact in a larger arena as well. She pioneered the country's first course in child advocacy. Her expertise is sought after by legislators and state and federal government officials.

As an advocate for welfare reform, many of Thornburg's courses focus attention on women and families in poverty. She encourages her students to join in her efforts. As a respected researcher in her field, she exposes her students to state-of-the-art information on how to care for children and how to train child care providers.

A former student writes, "Kathy, through her passionate beliefs and respect for students, has had a significant impact on my life. Her dream of improving the quality of life for children and families has touched me with a spirit of learning and excellence. In turn, I hope to inspire and stimulate others the way Kathy has for me."



**Charles Timberlake**

*Professor of Human Development and Family Studies*

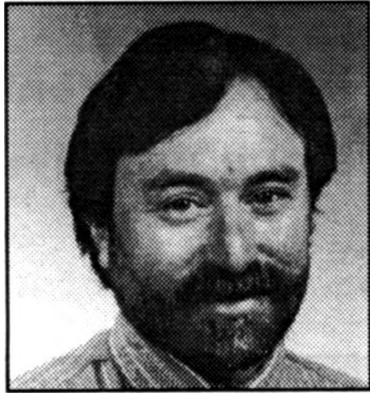
**Byler Distinguished Professor Award**

**C**harles Timberlake has maintained a record of excellence as a teacher of modern Russian history for nearly 30 years. During that time he's seen the Cold War come and go, and watched the monolithic Communist government in the Soviet Union dissolve. Through it all, his research has focused on the role of religion and peasant agriculture in Russian history.

His scholarly reputation is so respected that colleagues in Moscow recently asked him to help edit and contribute to a new encyclopedia of Russian history. He is one of just a handful of foreigners involved in the project. Timberlake's reputation as a teacher at Mizzou is rock solid, too, with students consistently giving him top ratings. He is known as a tireless advocate for the MU Libraries.

Timberlake tries to keep a mix of large lectures and small seminars in his teaching portfolio. "If you teach just large lectures, the students become a blur," he says. "Both the students and the teacher feel the distance." The personal contact helps him better tailor his courses assignments to fit the needs of individual students.

His colleagues are astounded by the number of students who ask Timberlake to write letters of reference for them; he writes nearly 60 letters a year. However, Timberlake sees the letters as an indication of his success in the classroom. "It's a sign that I got out of them their best work," he says.



**Michael Underwood**

*Professor of Geological Sciences*

**Chancellor's Award for Outstanding Research and Creative Activity in the Physical and Mathematical Sciences**

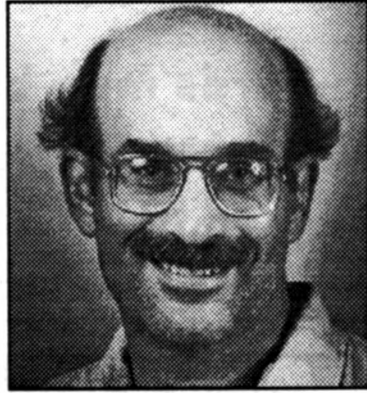
**M**ichael Underwood has made many contributions to the advancement of the geological sciences. Underwood, professor of geological sciences, has published 55 scholarly reports in leading journals and has made many presentations at national and international conferences. He has received research funding from an impressive array of sources, including the National Science Foundation, the U.S. Geological Survey, the Petroleum Research Foundation and the Joint Oceanographic Institutes.

One indicator of Underwood's recognition and respect in the international science community is his invited participation in the Ocean Drilling Program, a global geoscience venture that involves the United States, through the National Science Foundation, and 19 other nations. He has served as a shipboard scientist on two cruises and has had the distinction of two deep ocean dives in a submersible.

Because of that participation, he brings back to campus the insights of international scientists about important problems and future directions of geological sciences.

One of the things that sets Underwood apart is his multidisciplinary approach. "He doesn't think about problems in a local sense, he takes a global approach," says one colleague.

That approach makes perfect sense to Underwood. "In addressing complex geological processes, many parameters are involved. It's not feasible for one person to understand all of them," he says. "It's like playing football with just one person."



**David Wakefield**

*Assistant Professor of History*

**Provost Outstanding Junior Faculty Teaching Award**

**T**eaching from personal experiences is the key to David Wakefield's success. Assistant professor of history since 1993, Wakefield's ability to explain unfamiliar cultures and people to his students stems from his own familiarity with those cultures. Having lived in both Japan and China and traveled throughout Asia, he is equipped with the background knowledge to truly illuminate Asian humanities for his students. In addition, his research of Chinese family life in the 20th century and prize-winning translating skills give him even more of an edge.

Yet knowledge alone does not make an exceptional teacher, and Wakefield is aware of this. He engages students in conversations and urges them to explore topics on their own. He uses writing exercises and peer reviews to help students learn by doing. He also teaches his students tai chi, a form of Chinese exercise, as a way to re-energize students during a long lecture. "I have rarely seen the kind of loyalty that David inspires in his students," says Joel Brereton, associate professor of religious studies. According to class lists, Wakefield's students frequently take every course he offers.

Wakefield also advises undergraduate and graduate students. Serving as a mentor and adviser to many doctoral candidates, he helps with applications, grant proposals, visas and preparing for job interviews. "He always makes time for students, often putting up with our sudden appearance at his office for no other reason than to talk," says Benjamin Calder, one of Wakefield's former students.

## education

From Page 2

Students are also required to demonstrate computer and their education includes a capstone experience which requires using skills, methods and knowledge learned throughout the undergraduate curricula. Examples of the capstone experience include a senior-level seminar requiring a major project; an undergraduate thesis; an internship in a workplace setting with a paper that evaluates the experience; or a performance, show or recital.

With these requirements, about 70 percent of a typical MU student's course work is either mandatory or part of his or her required clustered choices, with the other 30 percent comprised of non-clustered choices. In such diverse fields as engineering, education and allied health, among others, the fact is that students have almost no options and must follow sequential course work in prerequisite fashion. All in all, the curriculum at MU is rigorous and innovative, while possessing elasticity within choices for students to obtain a much more comprehensive education than the rigidity of the past which

Balch and Zurcher cite as preferable.

A key component is instructional quality, and at MU, the Program for Excellence in Teaching helps make our instructional faculty some of the best in the nation. The annual Kemper Awards for Excellence in Teaching are a visible and tangible example of MU's commitment to having the finest scholar-teachers at the helm of its classes. Moreover, our innovative research-mentoring program linking undergraduates to research faculty allows our students to reap the benefits of attending a major research university such as MU. The program offers students the opportunity to see firsthand how research and teaching are natural parts of the same continuum and contribute to the overall excellence of an MU education.

What students (and their parents) need to examine is what they hope to achieve with a university education from institutions such as MU. Only an intellectually rigorous and educationally stimulating environment will enable students to develop the skills they need for life after college. At MU, that environment is being created with innovative requirements in a total living and learning community.

## A quest for faculty involvement

**A**s associate curator of MU's Anthropology Museum, Molly O'Donnell spends much of her time in Swallow Hall working with Mizzou's vast collection of artifacts. But over spring break she could be found standing waist-deep in sagebrush and yucca plants exploring the remains of an ancient Anasazi pueblo settlement in New Mexico.

O'Donnell was taking part in a trip to pilot faculty involvement in the Quest program, which provides outdoor experiences to incoming students. Quest trips are offered by the Department of Recreational Services through its Wilderness Adventures program in conjunction with Summer Welcome. Last summer, about 30 new Mizzou students participated in the Quest program.

This summer faculty will have a chance to help incoming students by sharing their time and knowledge during a Quest trip—in return they can participate in the trip free of charge.

"This is a good opportunity for students to have informal interactions with professors," says Tom Koperski, student service adviser for recreational services. "When they get to MU

they have that connection with upper-class students and with professors."

Talking with professors in an informal setting may spark interests in new fields of study or make some classes seem less intimidating for incoming students, says Koperski.

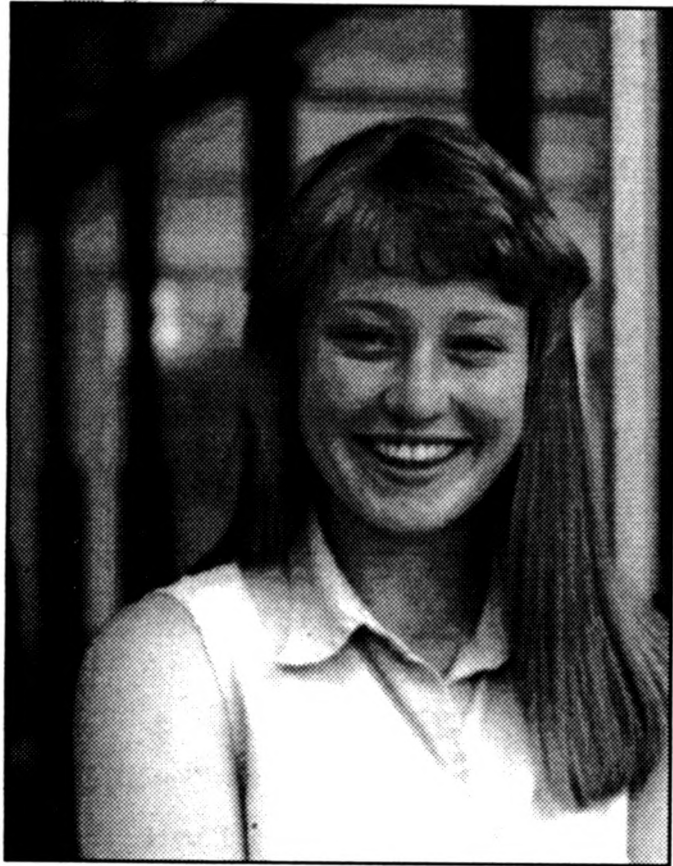
In addition to sharing her knowledge of Anasazi culture, O'Donnell learned about hiking, backpacking and nature during the week long trip to Bandelier National Monument in New Mexico. "Everybody learned from each other," she says.

The group set up base camp on plateaus and took day hikes to a variety of archaeological sites in the canyons.

Four Quest trips will be offered this summer. Faculty spots already have been filled for backpacking trips to Colorado and Wyoming, however faculty participation still is being sought for two summer trips in Missouri. An Ozark Trail backpacking trip will be offered June 9 to 15. A canoeing trip to southeast Missouri will be offered June 23-29.

More trips with educational themes, like the Bandelier trip, will be offered during the academic year. For information, call Tom Koperski at 882-2817. —Christie Studdard

# Congratulations to this Ellis Library Copy Center Scholar-Athlete of the Week



## *Heather Stock*

**Academic All-Big Eight, Phillips 66 Classroom Champion**

*Sport* ..... *Women's Golf*

*Major* ..... *Elementary Education*

*GPA* ..... *3.87*

Heather plans to teach and do mission work abroad after graduation. "I enjoy working for the less fortunate. I've been to Mexico twice to build homes for families."

*Heather balances her time between athletics and academics with discipline, good scheduling and by pre-planning.*

Ellis Library Copy Center  
115 Ellis Library  
Columbia, MO 65201-5149  
Phone: (573) 882-7262  
Fax: [573] 884-5004

Ask us about our fax service, full-color copy capabilities and any other copying needs you might have for this semester.

# CALENDAR

Send calendar items by Campus Mail to  
Mizzou Weekly Calendar, 407 Reynolds Center,  
by noon Thursday the week before publication.  
Events are free and open to the public unless otherwise noted.

## Courses

### Monday, May 13

**ISO 2000 PROGRAM SEMINAR:**  
"Columbia Free Seminars" will be offered  
from 8:30-10:00 a.m. in Room W1000  
Engineering Building East. To register or for  
information, call 1-800-776-1044.

### Wednesday, May 15

**NEW EMPLOYEE ORIENTATION:** Course  
will be offered from 1:30-5 p.m. in Columns 3  
of the Reynolds Alumni Center. The course  
is open to all new benefit-eligible  
employees.

## Exhibits

**BINGHAM GALLERY:**  
The Bingham Gallery located in the Fine Arts  
Building is open from 10 a.m.-4 p.m.  
weekdays.

**BRADY COMMONS GALLERY:**  
"Explorations in Architectural Space" is on  
display through May 14. The gallery, located  
in 203 Brady Commons, is open from 10  
a.m.-5 p.m. weekdays.

**MUSEUM OF ANTHROPOLOGY:** The  
museum, located in Swallow Hall, is open  
from 9 a.m.-4 p.m. weekdays.

**MUSEUM OF ART AND  
ARCHAEOLOGY:**

Ongoing exhibits:  
•"Aspects of Antiquity"

- "Expressions of Africa: Selections from the  
Permanent Collection"
- "Isms and Others in the Twentieth Century  
III"
- "The Education of a Beaux-Arts Architect:  
Student Drawings of E.J. Eckel" is on  
display through May 19.
- "Songs of My People: A Selection" is on  
display through May 19.
- "Echoes of Ancient America: Art from Lost  
Civilizations of the New World" is on  
display through Sept. 15.  
The museum, located in Pickard Hall, is open  
from 9 a.m.-5 p.m. Tuesday through Friday,  
6-9 p.m. Thursday, and noon-5 p.m.  
Saturday and Sunday.
- STATE HISTORICAL SOCIETY:**  
•"Decades: 1886 to 1966" editorial cartoons  
are on display in the east-west corridor.
- "Kurz and Allison Civil War Battle Scenes" is  
on display in the gallery through May 15.
- "Songs of My People" selections is on display  
in the north-south corridor through May 31.  
The gallery is open 8:30 a.m.-4 p.m.  
weekdays. The corridors are open 8 a.m.-  
4:30 p.m. weekdays and 9 a.m.-4:30 p.m.  
Saturday.
- UNIVERSITY HOSPITAL AND CLINICS:**  
Art for Life will exhibit work by Daniel  
Marks, Heather Foote and Diane Huneke  
through June 30 in the main lobby  
concourse of the University Hospital and  
Clinics and Ellis Fischel Cancer Center.

## Lectures & Seminars

### Thursday, May 9

**BIOLOGICAL SCIENCES SEMINAR:**  
Mike Freeling from the University of  
California-Berkeley will present "Initiation  
of Regional Identities During Segmentation  
and Leaf Organogenesis in Maize" at 3:40  
p.m. in 18 Tucker Hall.

### Friday, May 10

**ENTOMOLOGY SEMINAR:** Alison Powers  
from Cornell University will present  
"Ecological Interactions Between Plants,  
Viruses and Insect Vectors" at 2:40 p.m. in  
Room 2-7 Agriculture Building.

## Meetings

### Thursday, May 9

**STAFF ADVISORY COUNCIL:** Will meet at  
1:15 p.m. in N243 Memorial Union.

### Thursday, May 16

**TOASTMASTERS:** Will meet from 4 to 5  
p.m. in Room 1W19 at University Hospital.  
For information, call Vickie Stokes at 882-  
2239.

### Tuesday, May 14

**PHARMACOLOGY SEMINAR:** Jerry  
Atwood, professor and chairman of  
chemistry, will speak on "Application of  
Supramolecular Chemistry to Problems of  
Drug Delivery" at 11:40 a.m. in M558  
Medical Sciences Building.

## Summer Hours - Recreational Services

### Student Recreation Center

Monday-Friday 5:45 am - 8:00 pm  
Saturday-Sunday 10:00 am - 8:00 pm

### Recreational Services Office, 320 SRC

Monday-Friday 8:00 am - 5:00 pm

### Natatorium

#### Outdoor pool (weather permitting)

Days	Hours	Type
Daily	Noon - 2:00 pm	Lap swimming
Daily	2:00 - 4:00 pm	Non-lap swimming
Monday-Friday	6:30 - 8:00 pm	Open recreation

#### Indoor pool

Monday-Friday	Noon - 4:00 pm	Lap swimming
Saturday-Sunday	1:00 - 4:00 pm	Lap swimming

For more information, call (573) 882-2066 or  
Visit Rec. Services' website, <http://www.missouri.edu/~recwww>

MU Recreational Services 320 SRC (573) 882-2066 Student Affairs  
<http://www.missouri.edu/~recwww>



Wilderness Adventures  
Announces:

## ADVENTURE CAMP

Youth ages 13-16 are invited to attend this new program offered by  
Recreational Services. This camp will teach a variety of skills which may  
include:

Rock Climbing	Canoeing
Mountain Biking	Orienteering
Caving	Hiking

(activities selected depend on instructor availability, group dynamics, and the weather)

Day Camps	Price: \$90.00
Session I	June 16 - 20
Session II	July 8 - 12
Session III	July 22 - 26

Boy's & Girl's Adventures Price: \$165.00

Boys will paddle the scenic upper St. Croix River in western Wisconsin  
while the girls backpack in Colorado. Price includes food, transporta-  
tion, and most gear.

To register, come to 320 Student Recreation Center or Wilderness  
Adventures. For more information call 882-2817.

## Summer Wellness Programs from

### Fitwell & Recreational Services

#### Fitwell Classes

(June 17-August 9, 1996)  
6:15 - 7:15 am MWF  
Noon - 1:00 pm MWF  
5:15 - 6:15 pm MWF  
Cost: only \$30 + SRC user fees  
(Register with a partner & pay 2 for \$45)

#### Personal Training

\$10 per hour, by appointment  
\* Beginning-Advanced  
\* Exercise Consultation/Programming  
\* Bodyfat Testing  
\* Certified Trainers



For more information, call 882-2066 or 882-0705

MU Recreational Services 320 SRC (573) 882-2066 Student Affairs  
<http://www.missouri.edu/~recwww>

# Parking & Transportation Services

Turner Avenue Garage  
Level 2  
882-4568

Families and friends of graduating students will be arriving for the various commencement ceremonies. These folks will be touring campus and may need assistance finding a building or parking space. Please welcome these guests to campus by offering assistance or directing them to our office.

There will be a tremendous amount of construction projects on campus this summer, please use caution around these sites.

# CLASSIFIEDS

## SERVICES

**COUNSELING/PSYCHOTHERAPY**  
Marital, relationship, personal, educational, vocational; 25 years' experience with faculty, staff, students. Sliding fee scale. Don Eggeman, psychologist, 1205 University Ave. (next to parking garage), Suite 400. 449-6190.

Single professionals, meet other positive professionals; engage in weekly discussion group and social activities, call 446-1325 evenings.

Wee Pals is a loving Christian home day care. We learn, laugh and play. Located northeast Columbia. Experienced care provider with references. 474-2355.

## FOR SALE

House with rental units: two bedrooms, large living/dining, fireplace, apartment downstairs plus two rental units on three acres, stocked lake, walking distance Rock Bridge schools and State Farm Insurance. Phone 696-3022.

Lovely Tudor-style house in Grasslands, 10-minute walk to campus. Three bedrooms, three-and-a-half bathrooms, family room, study, formal dining and living rooms, fireplace, breakfast room, attached garage, screened-in porch, patio, large attic. New roof, furnace and extensive remodeling and landscaping. Call 449-8133.

## FOR RENT

**HOUSE FOR RENT:** Three bedrooms, two full baths, jetted tub, fireplace, family room, formal dining, living room, two-car garage. Walk to Fairview School. Available June 1, 1996. 449-7523.

Deluxe 4BR-2B duplex. Quiet, cul-de-sac, backs up to woods, gas fireplace, garage, all applications. Beautiful landscaped & deck. Consider long term lease. Must see. Available July \$750. 445-4105.

**HOUSE FOR RENT:** 3510 Woodside Drive. Lovely neighborhood. Four-plus bedrooms, two baths, carport. Pets OK. \$650. 445-0574.

**TRAILER FOR RENT:** Two-bedroom rural area, heat, water, and trash

pickup furnished, small garden spot, no pets, prefer couples only. \$350 plus deposit. Call 445-4031.

## WANTED

Aerobics/dance instructors: Why work for low wages? Start your own classes in furnished studio; low rent by hour or month; 446-1325 evenings.

1985 or newer pickup and camper (over-the-cab type). Call Craig or Tammy at 442-5028.

The Classified Advertising Section is open only to faculty and staff members and retirees. A home phone number is required in all classified ads. No refunds will be given for cancelled ads.

Ads must be typed.  
Rates: 30-word maximum \$5.

Publication deadlines:  
June 14 for June 20 issue  
July 5 for July 11 issue  
July 19 for July 25 issue

Mizzou Weekly Classifieds: Make your check payable to University of Missouri and send to: Mizzou Weekly, 407 Reynolds Center, Attention: Tanya Stitt.

FINALS

# WEEK

## You won't know we're around.

Giving exams, taking one or cramming for one. Silence is golden during this week.

We've taken steps to make sure our work is quiet this week by --

- using mowers and trimmers that operate with minimal noise;
- avoiding open windows while working, if possible. If you see our grounds staff, please close your window. They'll only be there for a couple of minutes.
- reorganized our work to avoid interrupting exams in the early hours. We've started working four ten-hour days, which allows us to be on the job longer, and to avoid disrupting campus activities for one day of the week.



# THIS IS A TEST

## Multiple Choice

- 1.) April showers bring May \_\_\_\_\_
- a. flowers
  - b. finals
  - c. 99¢ WHOPPER™s
  - d) All of the above

**99¢**

Special pricing for a limited time only.



**BRADY** in Brady Commons  
FOOD COURT

## SUMMER HOURS

MON. - FRI. 7 A.M. - 5 P.M.

ALSO FEATURING...



# CONGRATULATIONS TO DR. C. BRICE RATCHFORD



MU Extension and Continuing Education faculty and staff congratulate Dr. Ratchford for his years of outstanding service and leadership to Extension and its mission to the people of Missouri.

All Missourians benefit from his contributions in building an integrated program of Extension and Continuing Education.

# 154th annual commencement weekend set

All members of the University community are invited to attend the 154th annual commencement weekend activities May 17 through 19. More than 3,200 students will receive degrees. Also the University will present honorary degrees to former U.S. Sen. John Danforth; Gus Ridgel, the first black graduate student at MU; and Dumitru Ciocoi-Pop, director of the University of Sibiu in Romania.

The Honors Convocation, in recognition of baccalaureate graduates achieving Latin or divisional honors, starts

at 9:30 a.m., Saturday May 18 on Francis Quadrangle. In case of rain, the ceremony will be held at the Hearnes Center.

In the individual commencement ceremonies taking place at several locations across

campus, 2,192 undergraduates will receive bachelor's degrees, 770 students will be awarded graduate degrees and 297 students will receive professional degrees.

The schedule for divisional commencement ceremonies is:

- COLLEGE OF AGRICULTURE, FOOD AND NATURAL RESOURCES, 4 p.m., Saturday, May 18, Hearnes Fieldhouse
- COLLEGE OF ARTS AND SCIENCE, 2:30 p.m., Saturday, May 18, Hearnes Center

- COLLEGE OF BUSINESS AND PUBLIC ADMINISTRATION, noon, Saturday, May 18, Hearnes Center
- COLLEGE OF EDUCATION, 7:30 p.m., Saturday, May 18, Hearnes Center
- COLLEGE OF ENGINEERING, 5 p.m., Saturday, May 18, Jesse Auditorium
- GRADUATE SCHOOL: Special recognition of master's and educational specialist candidates. Hooding of doctoral candidates, 7:30 p.m., Friday, May 17, Hearnes Center
- SCHOOL OF HEALTH RELATED PROFESSIONS, 2 p.m., Saturday, May 18, Francis Quadrangle. In case of rain, Hearnes Fieldhouse.
- COLLEGE OF HUMAN ENVIRONMENTAL SCIENCES, 7:30 p.m., Saturday, May 18, Jesse Auditorium
- SCHOOL OF JOURNALISM, 5 p.m., Saturday, May 18, Peace Park, west of Gannett Hall. In case of rain, Hearnes Center.

- SCHOOL OF LAW, hooding ceremony, 2:30 p.m., Saturday, May 18, Jesse Auditorium
- SCHOOL OF MEDICINE, Noon, Saturday, May 18, Jesse Auditorium
- SCHOOL OF NATURAL RESOURCES, noon, Saturday, May 18, Middlebush Auditorium
- SCHOOL OF NURSING, 5 p.m., Friday, May 17, Jesse Auditorium
- ROTC ALL-SERVICE COMMISSIONING CEREMONY, 10 a.m., Saturday, May 18, Nursing Auditorium, S255 School of Nursing
- COLLEGE OF VETERINARY MEDICINE, 2 p.m., Friday, May 17, Jesse Auditorium.
- The MU Alumni Association will host an open house for all new graduates from 1 to 6 p.m., Saturday May 18 at the Reynolds Alumni Center. Refreshments will be served.

# The New Home Page

People asked us to include more information, to make it easier to find, and of course, to make it more useful.

*(you should be careful what you wish for)*

The web page now features a new logo, a clickable signpost that takes you to the most-used information, and a cool campus map.

Check it out: <http://www.missouri.edu/cc/>

brought to you by

# CAMPUS COMPUTING



# MIZZOU

WEEKLY

Publications and Alumni Communication  
407 Reynolds Alumni and Visitor Center  
Columbia, MO 65211

University Libraries  
University of Missouri

### Digitization Information Page

Local identifier                      MizzouWeekly(print)

### Source information

Format                                      Newspaper  
Content type                                Text with images  
Source ID                                   Duplicate copies University Archives weeded out  
Notes

### Capture information

Date captured                              July-December, 2022  
Scanner manufacturer                      Plustek OpticBook  
Scanner model                                A300 Plus  
Scanning system software                    Book Pavilion  
Optical resolution                            600 dpi  
Color settings                                8 bit grayscale for majority of pages;  
    24 bit color for color illustrations/portraits/photographs  
File types                                      tiff  
Notes

### Derivatives - Access copy

Compression                                Tiff: LZW compression  
Editing software                              Adobe Photoshop 2022  
Resolution                                    600 dpi  
Color    same as captured  
File types                                      pdf created from tiffs  
Notes    Images cropped, straightened, and brightened.