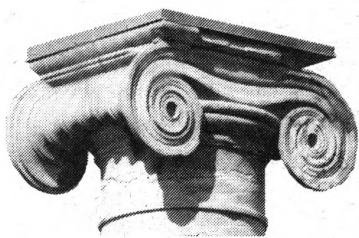


Mizzou Weekly

Paying Respects
Services Saturday for first MU African-American professor
Page 5



Bug on campus
New insect species discovered in MU bushes
Page 3

Nurturing creativity
Workshops help faculty unleash creativity in students
Page 2

May 2, 2013
University of Missouri
mizzouweekly.missouri.edu

Kemper Fellows talk about their winning teaching methods on Pages 6 and 7

Interactive Theatre Troupe helps improve communication between doctor and patient

DIALOGUES ON BREAST CANCER
Troupe received Mizzou Advantage grant in early 2013

In fall 2005, Heather Carver was preparing to leave her MU office for a meeting when she got a phone call that changed her life. Her doctor told her she had breast cancer.

"I like my drama on the stage," said Carver, associate professor and director of graduate studies in the theater department. "I don't like it in my life."

As Carver worked through her own diagnosis, treatment and survivorship (today she is cancer-free), she began to notice patterns in the stories told by breast cancer patients about how they were treated by the medical community.

She developed one-woman shows about her experiences and is now the scriptwriter for the MU Interactive Theatre Troupe's *Dialogues About Breast Cancer*, a set of three sketches that deal with doctor-patient communication about breast cancer.

Each interactive performance includes three five-minute plays with actors performing various roles, including doctor and patient. There is also an opportunity for the audience, usually health care professionals, to ask questions of the actors,

who remain in character. Finally, there is an interactive portion where audience members come on stage to act out how they might handle the situation.

"The doctors in these stories manage to offend pretty much everybody because they seem to not be aware of the patient's sensitivities or vulnerabilities," said Suzannie Burgoyne, troupe director. "[The doctors] each have their own reasons for behaving the way they do. The Q-and-A session is where you find out why people do and say what they do and say."

Carver wrote the scripts based on interviews with doctors, nurses, caregivers and breast cancer survivors. Her goal is to encourage health professionals to show more compassion and empathy toward patients.

"Charlie Brown shows used to crack me up. The kids talked, but the grown-ups sounded like, 'Wa Wa Wa, Wa, Wa Wa Wa, Wa,'" Carver said. "I wanted to get that in the scripts. Once you tell someone they have cancer, whatever you say after that is a blur. But the way in which you say it can make an impact for a long time."

Dr. James Campbell, a professor in the family and community medicine department, said the School of Medicine is



Photo by Rachel Coward

always looking for ways of helping students understand the doctor-patient relationship.

"It's a form of transformational learning," Campbell said. "You see something that's a puzzle or a problem, then the audience works to try to solve it. For example, the doctor seems harsh and uncaring. How can we make this a better situation?"

Campbell, Burgoyne and Carver secured a Komen Foundation grant in 2011 to research and pilot the three scripts. The troupe gave 12 performances, starting with medical school students and expanding to nursing and social work students, breast cancer

OPENING A DIALOGUE Actors in the Interactive Theatre Troupe performed a sketch from *Dialogues About Breast Cancer* at Mizzou Advantage Day April 30. From left, Mel George, professor emeritus in mathematics, plays the doctor telling Donna, played by Sally Foster, retired learning resource specialist at the MU Learning Center, that she has cancer. Kelsey Kennedy, BA, BJ '12, plays Becky, Donna's niece.

survivors and family members in the community.

"Our network is expanding," Burgoyne said. The network now includes Jane Armer, director of nursing research at Ellis Fischel, and her doctoral advisee, Pamela Ostby, as well as Lee Ann Woolery, who directs MU Extension's new Community Arts Program.

The growing impact of the conversations prompted the group to apply for a Mizzou

Advantage grant, which they received in early 2013. The grant will allow them to continue performances on and off campus as they seek funding to develop more scripts. The troupe performed April 30 at Mizzou Advantage Day and is currently planning a performance for Sedalia, Mo., and several other communities for Breast Cancer Awareness Month next October.

— Kelsey Allen

Council passes resolution to audit MU nuclear engineering programs

FACULTY COUNCIL
NSEI faculty member contends that admissions were never reopened.

Faculty Council approved April 25 a resolution asking Chancellor Brady J. Deaton to conduct an audit of Mizzou's Nuclear Engineering Program (NEP) and Nuclear Science and Engineering Institute, which administrators say is within NEP.

The resolution, passed 14-8, asks that the Nuclear Science and

Engineering Institute (NSEI) be returned to its status prior to its announced closing March 12, 2012.

The idea of restructuring NSEI began in 2010 when a study by external reviewers suggested the need. George Justice, dean of the Graduate School, said last February that NSEI needed to be closed because of the restructuring. Restructuring NSEI meant removing it from the Graduate School and placing it within the newly created NEP in the College of Engineering. NSEI's closure

came with the proviso that it would remain intact until currently enrolled students graduated.

But some MU engineers balked at the move, and Faculty Council on Jan. 24, 2013, asked Deaton to open admissions to NSEI and keep its academic and research functions intact. Deaton agreed to both in a Jan. 30, 2013, letter. A month later, Jim Thompson, dean of the College of Engineering, told council that graduate student applications were being accepted

into the program.

Deputy Provost Ken Dean said last week that the Faculty Council resolution "misses the point of what has happened" and reiterated that Deaton had re-opened nuclear engineering admissions.

But Faculty Council member Sudarshan Loyalka, one of four NSEI faculty members, said Monday that NSEI faculty were prevented from recruiting for the fall 2013 semester and from setting its curriculum. "NSEI admissions were not reopened,"

said Loyalka, Curators Professor of Nuclear Engineering. Deaton "granted admissions only to NEP."

Loyalka contends that NSEI and NEP are separate entities.

A second resolution presented to Faculty Council April 25 asked for an "analysis" of the MU administration's decision process to closing NSEI. The analysis committee would be similar to the Ad Hoc Root Causes Analysis Committee that examined the announced closing of the University of Missouri Press in March 2012, said Stephen Montgomery-Smith, a

See COUNCIL on Page 5

Researcher creates method to remove bad sperm from artificial insemination process



Courtesy of MU News Bureau

SKIMMING OFF THE TOP Peter Sutovsky, an MU associate professor of reproductive physiology, uses a magnet, metal particles and a sperm-filled test tube to separate good bull sperm from bad bull sperm. The method means better fertility through artificial insemination.

INCREASING CATTLE FERTILITY

Process can potentially save cattle ranchers time, money

Bull semen is not created equal. But Peter Sutovsky has found a way to better the odds.

Sutovsky, an MU associate professor of reproductive physiology, has identified a way to remove a portion of faulty bull sperm from the artificial insemination of cattle.

While many farmers buy bulls and approach breeding the old-fashioned way, a host of factors can make bulls infertile at certain times. That's why more farmers are turning to artificial insemination. Any advancement in reducing bad sperm in the artificial insemination process saves cattle ranchers time and money.

Sutovsky's surprising method to better the odds of cattle insemination involves use of a magnet, metal particles and a sperm-filled test tube. The technique essentially separates the wheat from the chaff.

Researchers use "biomarkers" to identify sperm that will not bring about conception. One biomarker is ubiquitin,

a protein found in most tissues that migrates to the surface of bad sperm.

Sutovsky coats small metal particles with an antibody that bind to ubiquitin on the defective sperm. He uses a magnet to literally pull those metal-sprinkled cells downward in the test tube. Next, he skims off the good sperm from the top.

"In the lab we use a very simple, regular magnet," Sutovsky said. "It's a little stick with three magnets on it. You put three test tubes on it and within a few minutes it pulls down all the metallic nanoparticles and the bad sperm with it."

For the cattle industry, these advancements mean better fertility through artificial insemination. Costs are reduced because smaller semen doses are used to get equal or better pregnancy rates in a cowherd. The standard artificial insemination dose is about 20 million sperm; Sutovsky's process makes pregnancy possible with 10 to 15 million sperm.

The process also works with other animals.

Faculty learn in workshops how to encourage student creativity

FACULTY CREATIVITY WORKSHOPS

Next workshop, part of Celebration of Teaching, is May 21

Students are afraid of being wrong, said Suzanne Burgoyne, an MU professor of theater. This leads to students being less likely to take risks and restricting creativity, she said.

"We all have that critic inside of us that tells us to not take risks," Burgoyne said. "There is that voice that says, 'Don't do that. You'll look like an idiot.'"

In today's world, full of developing technologies and an ever-changing economy, flexibility and innovation are a necessity. In order to be innovative, one must think creatively. In order to think creatively, one has to take risks. In her classes, Burgoyne promotes creativity by encouraging students to feel safe to take risks, trust their intuition and explore their own creativity. "It's more facilitating than teaching," she said. "There are things you can do that can encourage creativity in students."

Burgoyne became interested in faculty and student creativity after taking a faculty development leave during the 2010-11 academic year. She returned to campus to organize a workshop in May 2011 as part

of the Celebration of Teaching, which this year is May 21-22. The workshop, which was led by creativity experts from Wake Forest and the University of Illinois, filled up quickly and had a waiting list of 60 people.

"We knew we had something," Burgoyne said. "We knew we needed more events like that."

With the support of Jim Spain, vice provost for undergraduate studies, Burgoyne put together a committee to plan future Faculty Creativity Workshops at Mizzou. The goal of the workshops is to

share with faculty ideas for increasing student creativity.

"When we formed the committee, we felt that fostering creativity in students may be the most challenging aspect of teaching," said Bob O'Connell, an MU engineering professor who co-chairs the committee with Burgoyne. "We decided that holding a symposium every year at which faculty and their students could showcase their success at fostering creativity would both encourage them to continue and inspire others who want to be more successful at it."

Joining Burgoyne and O'Connell on the committee are Kathleen Boggs of the College of Education, Jana Hawley of the Department of Textile and Apparel Management, and Doug Moesel of the Trulaske College of Business.

The Faculty Creativity Workshops hosted a pair of events during the 2011-12 academic year and held another conference last fall. The next workshop is May 21, the first day of the Celebration of Teaching event.

The main speaker for

the workshop is Jane Piirto, a Trustees' Distinguished Professor at Ashland University in Ohio whose books include *Understanding Creativity*, *Creativity for 21st Century Skills*, and *Talented Children and Adults*. She is an award-winning poet and novelist, as well as a scholar in the psychology of creativity.

For more information and to register for the Faculty Creativity Workshops, visit the MU Celebration of Teaching website at celebration.missouri.edu.

— Josh Murray

**PROFESSIONAL DEVELOPMENT FUNDS
NOW AVAILABLE
FOR MU FACULTY!**



Mizzou Advantage offers awards of up to \$2,000 for faculty interdisciplinary development. Grants available for regular and non-regular faculty to better position themselves within Mizzou Advantage's interdisciplinary areas.

For more information visit goo.gl/bDx18

 **Mizzou Advantage**
University of Missouri

BBC



food + drink

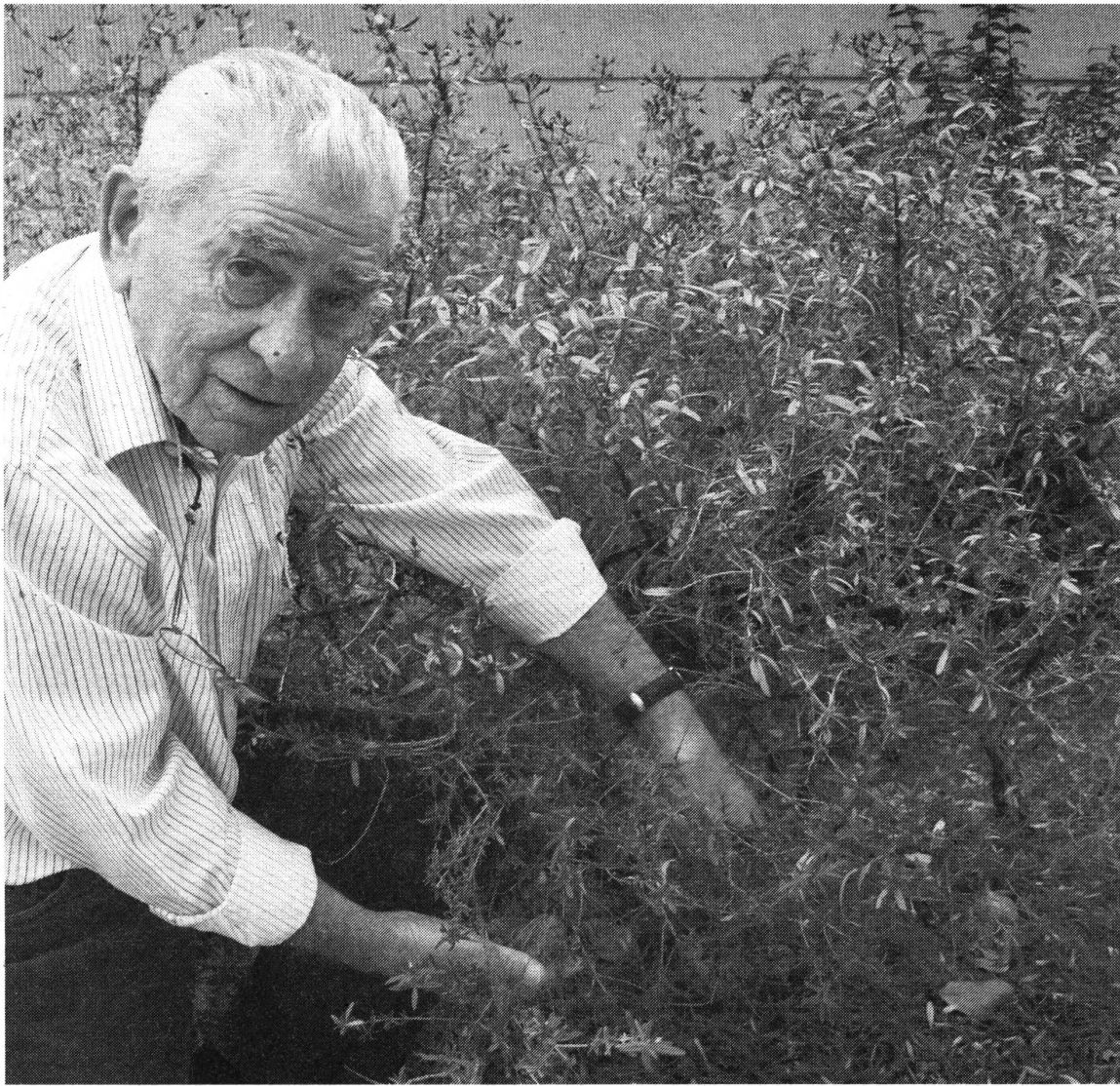
**Breadbasket Cafe is now open
downtown across from campus!**



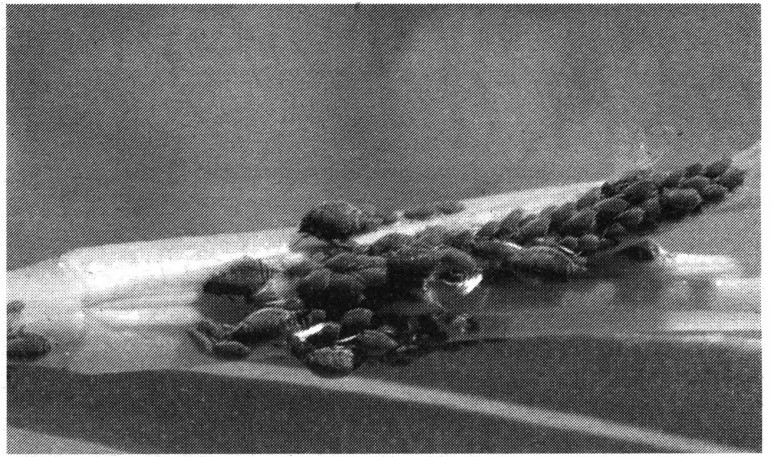
Enjoy original BBC soups, sandwiches and cookies plus patio seating and full bar with daily drink specials.

Open weekdays at 10 a.m. and weekends at 11 a.m. Call 445-1965 for catering.

Located at the corner of 8th and Elm.



THE DISCOVERER Ben Puttler, assistant professor emeritus of plant sciences, kneels on the MU campus by St. John's wort plants, where he first noticed the insect in 2005. *Aphis mizzou* is the seventh bug Puttler has discovered.



Photos by Randy Mertens

MIZZOU'S SPECIAL BUG The insect is considered a new aphid because of its five-segmented antenna, shape of abdomen and black head, thorax and abdomen.

New insect species identified on campus

APHIS MIZZOU

Scientist has identified seven new plant species during his career

The University of Missouri has Jesse Hall and Truman the Tiger. It now has its own insect.

Aphis mizzou, a member of the aphid family, has been officially described last fall in *Zootaxa*, a peer-reviewed scientific journal that describes newly identified organisms.

Aphis mizzou has been found only on the Mizzou campus so far, specifically around the recreation center. It lives on St. John's wort plants, said the bug's discoverer, Ben Puttler, assistant professor emeritus of plant sciences in the College of Agriculture, Food and Natural Resources. This is the seventh bug Puttler has discovered.

Puttler first noticed the insect in 2005 when he was investigating how parasitic wasps feed on another aphid, the *Aphis hyperici*. When he noticed the dark-colored insects again, he cataloged their differences. He worked with a colleague, Doris Lagos in the Department of Entomology at the University of Illinois, to confirm that the insect was unknown.

As the discoverer of the bug, Puttler got naming rights. He said that since the insects are known only to live on the

MU campus, it was natural to name them after Mizzou.

Aphids are insects that feed on the sap of plants. Nearly all plants including shrubs and trees are potential hosts for aphids, which can be found from a plant's tips to its roots. Aphid feeding can distort plant tissues, crumpling leaves and stunting and bending stems. Aphids excrete honeydew, a sugar source when digested by other insects, including ants.

While there are approximately 5,000 described species of aphids in the world, only 150 of them live in North America. Approximately 10 percent of aphids can damage cultivated crops or spread plant viruses.

Puttler's research details the biological control of pests — how naturally occurring insects and other biotic agents can fight crop pests and weeds.

Aphis mizzou is considered a new aphid because of its five-segmented antenna, shape of the abdomen and color. Its head, thorax and abdomen are black, and seem to be dusted with a white wax. An individual *Aphis mizzou* is smaller than a grain of pepper.

Aphis mizzou doesn't seem to be hurting other plants by its presence, Puttler said. Its existence is simple: feeding on leaves of the St. John's wort.

— Randy Mertens

MU Staff Advisory Council Update

Staff Recognition Week will be May 20-24.

Monday, May 20: Awards Ceremony at Jesse Hall Auditorium, 1:30 p.m.

Tuesday, May 21: "ToursDay" with tours of Mizzou Arena and other locations

Wednesday, May 22: NEW EVENT - Activity Day at Lowry Mall - including live music, free food, games and door prizes

- **Annual Arts & Crafts Show** at Ellis Library Tuesday-Thursday
- **Human Resources Courses** for any staff member to attend, including "Yoga at Your Desk" and "Five Dysfunctions of a Team"
- **Online Auction** to benefit the SAC Education Fund (starts May 20)

Pick up an SAC Bookmark at the Awards Ceremony or other events to learn about the Staff Advisory Council, and to also take advantage of special Staff Recognition Week discounts around campus, including Tiger Garden, University Bookstore, and zouLIFE spa at MizzouRec.

Go to staffcouncil.missouri.edu for more information.

Nominate an MU staff member for their exemplary performance for special recognition!

Nominate a deserving staff member for the MU Service Champion Award! Go to staffcouncil.missouri.edu for more information and a nomination form. Any MU faculty, staff or student can submit a nomination.

2013 Council Elections

Nominations are being accepted now through May 24. Go to the Council's website or 27 Jesse Hall for a nomination form and complete details.



Staff Advisory Council
"Working For You"
staffcouncil.missouri.edu

MIZZOU WEEKLY Summer Advertising Special

Mizzou Weekly will publish:

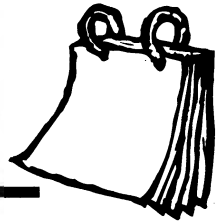
June 13 July 11

June 27 July 25

Contact:
884-1278
mizzouweekly@missouri.edu



calendar



Concerts & Plays

Thursday, May 2

UNIVERSITY THEATRE
SERIES: *Angels in America*, by Tony Kushner, at 7:30 p.m. today through May 4 at the Rhynsburger Theatre. For ticket information call 882-7529.

Sunday, May 5

UNIVERSITY THEATRE
SERIES: *Angels in America*, by Tony Kushner, at 2 p.m. at the Rhynsburger Theatre. For ticket information call 882-7529.

Saturday, May 11

UNIVERSITY CONCERT
SERIES: The Missoula Children's Theatre and more than 50 local students present an original musical adaptation of Hansel and Gretel. There will be two performances, at 3 and 6 p.m., both in Jesse Auditorium. For ticket information call 882-3781.

Courses & Workshops

Tuesday, May 7

COMPUTER TRAINING:

- "Excel 2010: Charts & Graphics" will be offered at 8:30 a.m. in 19 Arts & Science.
- "Access 2010: Relationships & Queries" will be offered at 8:30 a.m. in 18 Arts & Science.
- "Photoshop CS5: Advanced Projects" will be offered at 1 p.m. in 19 Arts & Science.

Registration is required online at training.missouri.edu or call 882-5000.

Wednesday, May 8

COMPUTER TRAINING:

- "PowerPoint Design and Presentation" will be offered at 8:30 a.m. in 19 Arts & Science.
- "Excel 2010: Data Management & Importing" will be offered at 1 p.m. in 18 Arts & Science.
- "InDesign CS5 4: Tables, Long Documents & Books" will be offered at 1 p.m. in 19 Arts & Science.

Registration is required online at training.missouri.edu or call 882-5000.

Thursday, May 9

COMPUTER TRAINING:

- "Dreamweaver CS5 3: Tables, Templates & Movies" will be offered at 8:30 a.m. in 18 Arts & Science.
- "Outlook 2010: Taking Control of Your Calendar" will be offered at 8:30 a.m. in 19 Arts & Science.

Registration is required online at training.missouri.edu or call 882-5000.

Monday, May 13

COMPUTER TRAINING:

- "10747 — Administering System Center 2012 Configuration Manager" will be offered 10a.m.-5 p.m. in 205B Locust Street Building. This course continues through May 17.

Registration is required online at training.missouri.edu or call 882-5000.

Tuesday, May 21

COMPUTER TRAINING:

- "Access 2010: Forms & Reports" will be offered at 8:30 a.m. in 25 Arts & Science.
- "SAS Certification Part I" will be offered at 8:30 a.m. in 003 Cornell. This course will continue through May 24.
- "Webinar — What's New in Office 2013" will be offered at noon at doit.missouri.edu/training/webinar.
- "Photoshop CS5: Advanced Techniques" will be offered at 1 p.m. in 18 Arts & Science.

Registration is required online at training.missouri.edu or call 882-5000.

Wednesday, May 22

COMPUTER TRAINING:

- "Dreamweaver CS5 1: Getting Started, Images & Links" will be offered at 8:30 a.m. in 25 Arts & Science.
- "InDesign CS5 1: Introduction & Basic Documents" will be offered at 1 p.m. in 18 Arts & Science.
- "Excel 2010: Functions, Scenarios & Solver" will be offered at 1 p.m. in 25 Arts & Science.

Registration is required online at training.missouri.edu or call 882-5000.

Thursday, May 23

COMPUTER TRAINING:

- "Photoshop CS5: Selections & Layers" will be offered at 8:30 a.m. in 18 Arts & Science.
- "Dreamweaver CS5 4: CSS Projects & Publishing" will be offered at 1 p.m. in 18 Arts & Science.
- "Intro to HTML5 & CSS" will be offered at 1 p.m. in 25 Arts & Science.

Registration is required online at training.missouri.edu or call 882-5000.

Tuesday, May 28

COMPUTER TRAINING:

- "Excel 2010 for Starters" will be offered at 8:30 a.m.

in 18 Arts & Science.

- "SAS Certification Part 2" will be offered at 8:30 a.m. in 003 Cornell. This course will continue through Friday, May 31.
- "Webinar - Navigating Office 2013" will be offered at noon at doit.missouri.edu/training/webinar.
- "Web Design" will be offered at 1 p.m. in 18 Arts & Science.
- "Access 2010: Advanced Forms, Reports & Queries" will be offered at 1 p.m. in 25 Arts & Science.

Registration is required online at training.missouri.edu or call 882-5000.

Wednesday, May 29

COMPUTER TRAINING:

- "Outlook 2010: Divide & Conquer Your Inbox" will be offered at 8:30 a.m. in 18 Arts & Science.
- "Dreamweaver CS5 2: Intro to CSS" will be offered at 8:30 a.m. in 25 Arts & Science.
- "InDesign CS5 2: Modifying & Finalizing Documents" will be offered at 1 p.m. in 18 Arts & Science.

Registration is required online at training.missouri.edu or call 882-5000.

Thursday, May 30

COMPUTER TRAINING:

- "Photoshop CS5: Colors & Image Size" will be offered at 8:30 a.m. in 18 Arts & Science.
- "HTML5 & CSS: Links, Graphics & Structure" will be offered at 8:30 a.m. in 25 Arts & Science.
- "iPad for the University" will be offered at 1 p.m. in 18 Arts & Science.

Registration is required online at training.missouri.edu or call 882-5000.

Exhibits

MUSEUM OF ART AND ARCHAEOLOGY:

- "Sites of Experience: Keith Crown and the Landscape of New Mexico" will be on display through May 19.
- "14 Rural Absurdities by Tom Huck" will be on display June 4 through August 11.

The museum, located in Pickard Hall, is open 9 a.m.-4 p.m. Tuesday-Friday, 9 a.m.-8 p.m. Thursday, and noon-4 p.m. Saturday and Sunday.

STATE HISTORICAL SOCIETY:

- "Nelly Don: Self-Made, Ready Made," a collaboration with the Missouri Historic Costume & Textile Collection, will be on display through May 18.
- "Money, Mail and Memoria: Ephemera of the Civil War Era" will be on display through Aug. 31.

Gallery hours are 8 a.m.-4:45 p.m. Monday-Friday, and 8 a.m.-3:30 p.m. Saturday.

Lectures & Seminars

Saturday, May 4

SATURDAY MORNING SCIENCE: Robert Sharp and Mel Oliver, professors of plant science, will present "A Dry Topic: How Plants Adapt to Drought" at 10:30 a.m. in Monsanto Auditorium.

Friday, May 10

ELEARNING BROWN BAG SERIES: Find out from instructors what teaching tools they couldn't live without in "My Digital Teaching Toolbox." Arrive at 11:30 a.m. to enjoy your lunch. The presentation begins at noon in 2205 A&B Student Center.

Films

Friday, May 3

MUSEUM OF ART & ARCHAEOLOGY: *The Milagro Beanfield War* (1988), directed by Robert Redford, will be shown at 7 p.m. in 106 Pickard Hall. This showing is free and open to the public.

Thursday, May 16

MUSEUM OF ART & ARCHAEOLOGY: *La Grande Illusion* (1937), directed by Jean Renoir, will be shown at 7 p.m. in 106 Pickard Hall. This showing is free and open to the public.

Friday, June 7

MUSEUM OF ART AND ARCHAEOLOGY: *Ride With The Devil* (1999), directed by Ang Lee and starring Tobey Macguire and Skeet Ulrich, will be presented at 7 p.m. in 106 Pickard Hall. The film is free and open to the public.

Thursday, June 20

MUSEUM OF ART AND ARCHAEOLOGY: *Black Orpheus*

(1959), directed by Marcel Camus and starring Breno Mello and Marpessa Dawn, will be presented at 7 p.m. in 106 Pickard Hall. The film is free and open to the public.

Special Events

Thursday, May 2

YAYA CONNECTION PRESENTATION: The youth and young adult (YAYA) market can be fickle, yet loyal in its dining-out decisions. YAYA Connection (part of the School of Journalism) presents "Save, Splurge, Share: Dining Out With Youth and Young Adults," where a discussion will explore factors that influence restaurant choices of YAYAs at 3 p.m. in Fred Smith Forum. To RSVP, visit yayaconnection.eventbrite.com.

Wednesday, May 8

IMSD EXPRESS RECOGNITION CEREMONY: Come celebrate the academic and professional accomplishments of the undergrad minority science community with MU's Initiative for Maximizing Student Diversity. A dessert reception will begin at 4 p.m. in the McQuinn Atrium in the Bond Life Sciences Center. RSVP to Pam Monroe at 882-5979.

Friday, May 10

NATIONAL PUBLIC GARDENS DAY: Mizzou Botanic Garden will participate in this day of awareness inviting communities across North America to visit and learn about the important role that public gardens play in our lives. For more information on the event, visit bhg.com/gardening/arboretums/celebrate-national-public-gardens-day/.

Tuesday, May 21

CELEBRATION OF TEACHING: This two-day professional development opportunity allows instructors, staff and graduate students to share research, best practices, model programs and lessons-learned. Mark Milliron, chancellor of non-profit university WGU Texas, will give the keynote address at 1:30 p.m. in Jesse Hall. The event continues May 22 in Cornell Hall. For more details and to register, visit celebration.missouri.edu.



Celebration of
TEACHING

University of Missouri

May 21-22, 2013

Open to ALL instructors, advisers and staff

#CelebrateMizzou

Schedule and registration info:
celebration.missouri.edu

Featuring:
Mark Milliron
 Chancellor,
 Western Governors University
 of Texas

Keynote Address: May 21, 1:30 p.m.

MizzouWeekly

Volume 34 No 29
mizzouweekly.missouri.edu

A publication for the faculty and staff of the University of Missouri, published every Thursday during the academic year and twice a month during the summer by Publications and Alumni Communication, a department of University Affairs, 407 Reynolds Alumni Center, 882-7357. News deadline is noon Thursdays.

Editor Mark Barna
Advertising Tony Billmeyer, Scott Reeter
Designer Rebecca Fels
Photographers Nicholas Benner, Rachel Coward, Rob Hill
Writer Ashley Carman

Services Saturday for first MU African-American professor

Arvarh Strickland, who became the first black professor at MU in 1969, died Tuesday.

Strickland retired as professor emeritus of history in January 1996. The university renamed a

campus building the Arvarh E. Strickland Hall in October 2007. This was the first building named after an MU African-American faculty member.

Visitation begins at 9:30 a.m. Saturday at Missouri United Methodist Church, 204 S. Ninth St., followed by services at 11 a.m.

"We celebrate Dr. Strickland

not because he is African-American, but because he is a great historian, scholar, teacher, colleague and citizen," Deputy Chancellor Michael A. Middleton said Wednesday.

Craft Sale

Shop the annual craft sale 10 a.m.–2p.m. today at the Craft Studio at N12 Memorial Union. There will be discounted pottery, jewelry, stuffed animals and other handmade crafts. For more information, email craftstudio@missouri.edu.

Summer plants are here

Summer is coming, so now is the time to stock up on warm-season plants. They include tomatoes, peppers, herbs and geraniums.

The sale is 9 a.m.–4:30 p.m. today and Friday at Tiger Garden, 2-34 Agriculture Building.

From COUNCIL on Page 1

mathematics professor and council member.

Having a committee decide the NSEI matter would enable MU to "go forward in an informed and clear way," Loyalka said. This resolution was tabled.

Council also discussed a motion presented at the April 9 General Faculty Meeting by Galen Suppes, a professor of chemical engineering. The motion states that the Collected Rules and Regulations governing faculty appointments to programs such as NEP need to be followed.

Suppes, Loyalka and others contend that Thompson and John Gahl, director of NEP, chose the NEP faculty. The proper procedure should have been creation of a committee to identify and hire faculty with input from Deaton, according to a document circulated by Montgomery-Smith at the meeting.

Suppes, who is not on Faculty Council, told council members that the collected rules show that faculty have a role in hiring other faculty at MU programs offering degrees. "That is where faculty authority kicks in," Suppes said. "Faculty are in charge of curriculum."

In an April 26 email interview, Suppes said that the "faculty group who appointed themselves to NEP received no external (to the group) faculty verification of their credentials and appointment... The only verification was self-verification by the group."

MU Libraries

In other business, Noah Heringman, chair of the MU Library Committee and associate chair of the Department of English, presented findings of a faculty library survey to which 357 faculty responded in April 2012.

The survey indicated that faculty view MU Libraries as important to teaching and research. Ninety-seven percent of respondents agreed with the statement that the libraries "should keep faculty informed and solicit their input on decisions concerning changes to journal subscriptions." Nearly 87 percent agreed with the survey statement that "MU Libraries are central to my research mission."

The survey was concluded weeks prior to nearly \$500,000 in cuts to MU Libraries to help balance the university's fiscal 2013 budget. As a result, more than 450 journal subscriptions

were canceled, as were library projects and other proposed book purchases, Heringman said.

Last year's six-figure cuts brought urgency to Heringman's questions to council:

- How can shared governance be implemented among librarians, faculty and administrators before reductions occur?

- How can faculty improve communication with library staff?

In a March 7, 2013, letter to Deaton and Provost Brian Foster, Heringman urged administrators to spare the library from cuts for the fiscal 2014 budget.

"The voices of student and staff representatives on [the MU Campus Library Committee] — or simply a walk through the library on any given day — provide further evidence that the Libraries serve the campus in the most democratic fashion. They can't do it without adequate materials budgets."

Heringman also wrote that a robust libraries system would help improve MU's status in the Association of American Universities.

Council members briefly discussed Heringman's questions, but no decisions were made.

Offices adopt summer hours

Mizzou administrators have approved summer hours from 7:30 a.m. to 4:30 p.m., with a 30-minute lunch break, from May 20 to Aug. 5

Many offices have also adopted a casual dress code during summer due to hot weather. It is at the discretion of office leaders to adopt the hours, the dress code or both. Administrators realize that traditional business attire and 8 a.m.–5 p.m. hours are necessary in some departments.

The following have adopted summer hours:

Academic Support Center
Accounting Services
College of Agriculture, Food and Natural Resources:

- Animal Sciences
- Division of Food Systems and Bioengineering
- School of Natural Resources

College of Business:

- Professional Development Office
- Undergraduate Dean's Office

College of Education:

- Adventure Club
- Dean's Office
- Office of External Relations
- Office of Operations
- Academic Programs—Advising and Certification Services
- Office of Career & Program Support
- Mizzou K-12 Online
- MU High School
- Department of Educational Leadership & Policy Analysis
- Department of Educational, School and Counseling Psychology
- Department Learning, Teaching and Curriculum
- Department of School of Information Science and Learning Technologies
- Department of Special Education
- Educational Leadership and Policy Analysis

- Assessment Resource Center
- Dean's Fiscal Office
- Learning and Performance Support
- MU Partnership of Educational Renewal

- Office of Research Support
- Heart of Missouri Regional Professional Development Center

College of Arts and Science:

- Art
- Art History and Archaeology
- Biological Sciences
- Chemical Engineering
- Chemistry
- Communication
- Computer Science
- Economics
- English
- Geography
- Geological Sciences
- History
- Physics and Astronomy
- Psychological Sciences
- Romance Language & Literatures
- School of Music
- Sociology

College of Engineering:

- Student Services Office
- Civil and Environmental Engineering
- Electrical and Computer Engineering

Conference Office

Division of Information Technology

Division of Enrollment Management:

- Enrollment Management Administrative Office
- Admissions
- Student Financial Aid
- Student Information Systems
- University Registrar
- Missouri College Advising Corps
- Veterans Center

Environmental Health and Safety

HES Student Services Offices

Human Resource Services

Missouri Training Institute

Mizzou Advantage

Mizzou Online

Museum of Art and Archaeology

Parking and Transportation

Residential Life:

- University Student Apartments

School of Health Professions:

- Department of Occupational Therapy

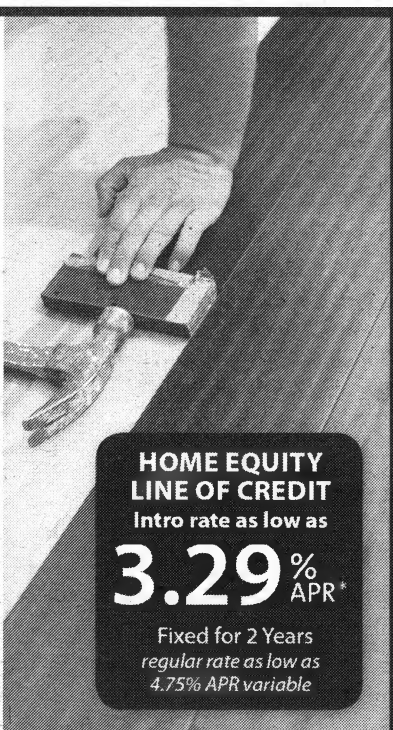
Use Your Home's Equity to Improve It.

Our Home Equity Lines of Credit are a smart way to finance all your home improvements and repairs.

- Great low rates
- Potential tax benefits*
- Refinance from other institutions
- We'll even pay part of your closing costs!*

Apply today!

Call, visit our website or stop by our branch!



N17 Memorial Student Union, Lower Level
Columbia, MO 65211 • tigerscu.org
573.443.8462 or 888.673.2844

*APR—Annual Percentage Rate. Rates subject to change. Rates, terms and conditions may vary based on creditworthiness, qualifications or collateral conditions. After introductory period, APR may adjust monthly between Prime Rate and Prime Rate plus a margin of 2.00% depending upon your loan-to-value and credit history at time of application, all though it will not be lower than 4.75% APR and will not exceed 18.00% APR. The Prime Rate used is 3.25% as of 3/1/13 as published in *The Wall Street Journal*. All loans subject to approval. Properties securing home equity loans and lines of credit must be located in Missouri and select counties in Illinois and Kansas. Property insurance will be required and flood insurance where necessary. Closing cost offer applies to lines of \$15,000+. See tax advisor for tax deductibility. Refinancing available from other institutions only.

Federally insured by NCUA. Additional coverage up to \$250,000 provided by Excess Share Insurance Corporation, a licensed insurance company.



My Digital Teaching Toolbox

Find out from instructors what teaching tools they couldn't live without—and can't wait to share with others.

Friday, May 10, 2013 from 12:00 PM - 1:00 PM
2205 A&B Student Center



University of Missouri

Kemper Fellowship winners put students first

WILLIAM T. KEMPER
Five faculty earn
\$10,000 fellowships

Five MU faculty received Kemper Fellowships in April for their teaching service. Deputy Chancellor Michael A. Middleton and other administrators made surprise visits to their classrooms. Cheryl Black, an associate professor in the theater department, was teaching April 2 in the Fine Arts Annex when she was notified. "My students keep me on my toes," Black said after the announcement. "They keep me inspired."

The William T. Kemper Fellowships for Teaching Excellence was established by the William T. Kemper Foundation in 1991 with a \$500,000 gift to honor outstanding teachers at the University of Missouri.

Every spring, top MU administrators and executives from Commerce Bank, the trustee for the Kemper Foundation, interrupt the classes of new Kemper Fellows and surprise each of them with a \$10,000 gift.

Over the years, Kemper Fellows have commented on how the awards enhance faculty morale and reward teaching in higher education.

Kemper, a 1926 MU graduate, was a well-known civic leader in Kansas City. His 52-year career in banking included top positions in Missouri, Kansas and Oklahoma. The William T. Kemper Foundation, established in 1989 after his death, is dedicated to continuing Kemper's lifelong interest in improving the human condition and quality of life through education, health and human services, civic improvements and the arts.

Reporter Kelsey Allen profiles this year's winners.

ELIZABETH BAKER



Professor of Literacy Studies in the Department of English

Betsy Baker teaches the way she wants her students to teach. She is a teacher of teachers.

Baker started as a second-grade teacher, spelling out the ABCs for students learning to read and write. Now Baker focuses on the next wave of literacy — in a digital world.

"She is so committed to helping teachers understand the critical need to shift their literacy instruction from traditional reading and writing skills to the reading and writing skills required in our technological culture," wrote John Lannin, associate professor and chair of Learning, Teaching and Curriculum in the College of Education.

Whether on campus or online, Baker fosters a sense of community, encourages discussion, employs the newest technology available and provides students with examples of how to transfer what they're learning to the classroom.

"I am [now] much more interested in researching and using online collaboration than I ever thought I would be," a student wrote of Baker's suggestion to use social networking sites, YouTube, podcasts and blogs in the classroom. "After introducing [my high school history students] to Google Docs, they were extremely excited to try it out. I do not think I have ever had a class as engaged as they were that day."

Baker created a multimedia platform called Children as Literacy Kases, or ChALK, in which her students explore cases of literacy development and propose how to best teach the students in the classroom. ChALK users cite the case-based instruction as more significant to their growth as literacy teachers than student teaching, course readings or discussions. Baker is also a driving force

behind better preparing doctoral students for qualitative research. In a two-semester sequence, she helps students formulate and propose research, collect and analyze data, and write final papers. Mentoring more than 75 doctoral students in this course, Baker reaches outside the College of Education to those in nursing, theater and social work.

"Her instruction has caused a snowball effect that can be observed locally on the MU campus, regionally with teachers in Missouri, and nationally/internationally with teachers, program executives and researchers in our respective disciplines," former students of Baker — now professionals in science education, social work, and educational leadership and policy analysis — wrote in a joint letter of support.

Her revolutionary teaching and research has won Baker numerous honors, including the 2012 President's Award for Innovative Teaching and the 2011 Ernest L. Boyer International Award of Excellence in Teaching, Learning, and Technology.

C H E R Y L BLACK



Associate Professor of Acting, Theater History, Dramaturgy and Dramatic Literature, Department of Theater

To describe Cheryl Black as a teacher doesn't quite encompass all that she is. She is also an actor, a director, a playwright, an editor, an adviser, a historian and, as colleague Suzanne Burgonye put it, a force of nature.

For eight years she served as the theater department's director of graduate studies, attracting top-tier students, securing grants and fellowships, participating in conferences and serving on the committees of dissertations.

But students know her as teacher. "Whether it be through class discussion on students' interpretations of dramatic

literature, presentations of 'reader's choice' plays in her graduate seminar on women's dramatic traditions, or in the selection of final research topics as part of her undergraduate theater history course, the diverse teaching strategies Dr. Black employs in her classroom increase student engagement and investment in the course and course material," wrote doctoral candidate Emily Rollie.

For example, Black's undergraduate theater history students are assigned to research a well-known figure in theater history and eventually asked to embody that person in dress and character at the end-of-the-semester party she hosts.

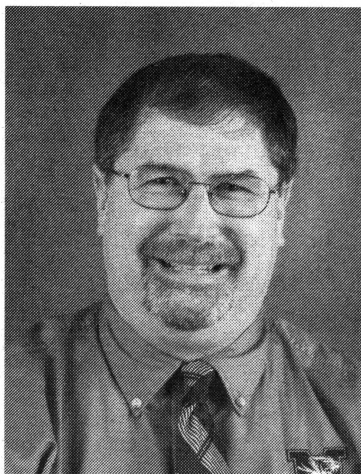
"I provide opportunities for students to do theater as well as to study it," Black wrote in her philosophy of teaching statement.

Black's major contributions to the department include creating a dramaturgy program, which has led to numerous national awards for her students; developing a theater criticism program in conjunction with the School of Journalism; and directing full productions at Mizzou.

"An important aspect of Dr. Black's productions is the combination of research, scholarship and creative activity — and she is masterful in finding teaching moments in every one of the productions she has directed," wrote David Crespy, associate professor in the theater department.

In summer 2012, Black won the Outstanding Teacher of Theatre in Higher Education Award, the highest teaching award from the Association for Theatre in Higher Education.

T I M EVANS



Toxicology Section Leader, Veterinary Medical Diagnostic Laboratory and Associate Professor, Department of Veterinary Pathobiology

If a dog ingests something that's toxic, it's The Antidote to the

rescue, treating the patient, not just the poison. Dressed in mask and cape, The Antidote is Tim Evans' alter ego, saving one "stale" (his words) veterinary toxicology lecture at a time. Evans, also known for his Hawaiian shirts that occasionally depict toxic plants, has been spicing up the field of toxicology at MU for 12 years.

Understanding toxicology is important to veterinary professionals; however, the expectation of memorizing every poison is unrealistic. Evans favors experiential learning in the classroom, using a data collection exercise he calls Pick Your Poison. Students choose a common household product from the Box of Tox and determine if a 10-pound dog would risk intoxication if it consumed the product. Putting students in real-life situations they will face after graduation, while requiring them to explain the basis for the clinical symptoms, creates a captivating learning environment.

Many former students wrote about Evans' availability for one-on-one mentoring and after-hour consultations. For Evans, it's a calculated formula.

"I like to divide student mentorship into 'nurturing' (they are glad I am there), 'benign neglect' (they don't know I am there), and 'tormentorship' (they know I am there, and they wish I was not)," he wrote in his teaching philosophy statement.

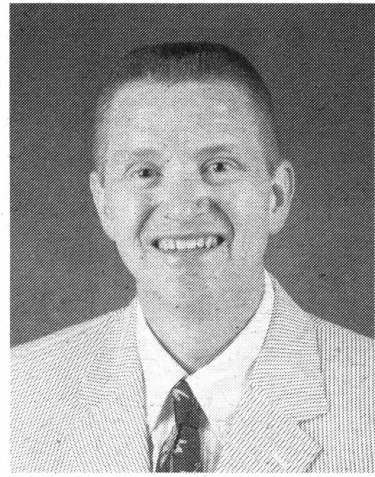
Recent graduate Colleen Risinger wrote it was Evans' benign neglect that forced her to solve problems on her own.

Often commented on is Evans' sense of humor, a tool he uses in concert with this enthusiasm and expertise. When asked to teach summer veterinary scholars how to succinctly present their research to the general public, Evans donned his superhero costume and led the students to the nearest elevator for a lesson in elevator pitches.

"He has been known to make no less than 20 trips up and down the elevator in the Bond Life Sciences Center dressed as The Antidote just to teach students how to summarize their work in concise elevator statements," wrote student Daniel Tappmeyer.

Evans has won each of the most prestigious teaching awards within the College of Veterinary Medicine, including the 2012 Carl F. Norden-Pfizer Veterinary Teacher Award and the honor of hooding the fourth-year veterinary students during commencement. He was also Mizzou Wire's 2010 Nerd of the Year.

WILLIAM HORNER



Associate Teaching Professor and Director of Undergraduate Studies, Department of Political Science

Party politics and ideology come up in William Horner's American Government course, but some of his most notable lessons are taught outside of the classroom. As the adviser of three student groups — Model United Nations, Mizzou Relay for Life and Phi Sigma Alpha — Horner is training students how to be American citizens.

"This allows me another venue to encourage students to be involved in the world they live in and to learn how to change what they think needs changing," Horner wrote of his involvement in extracurricular activities. "It lets students see that I care about what they care about and, most important, that I care enough to give my time and energy to it."

Students notice. Marc Canellas, a 2012 engineering graduate, had a seed of an idea for a conference that discusses the connections among the fields of engineering, politics and science. A peer urged Canellas to reach out to Horner for help. The student chapters of the political science honor society, Pi Sigma Alpha, and the American Society of Mechanical Engineers partnered to present the conference, which featured speakers Horner secured, including former Sen. Kit Bond and former U.S. Rep. Kenny Hulshof.

"There are many inspirational teachers who support their students and tell them, 'You can do it,' but I am a living testament to Professor Horner's ability to go beyond supporting students in their pursuit of their dreams," Canellas wrote. "He took ownership of my dream and said, 'We can do it.' Professor Horner showed me for the first time that I really can make a positive and lasting impact on my community."

Horner's goal — whether in the classroom, where his students could be political science majors or

journalism students fulfilling a requirement, or on the track at Relay for Life — is to engage students and instill in them curiosity and a passion for leadership.

"Bill's commitment to the philanthropic service aspect of the mission to the University of Missouri cannot be spoken [of] highly enough," wrote former student Craig Stevenson, now University of Missouri System director of the Office of Government Relations. "Whether raising tens of thousands of dollars for the Mizzou Relay for Life while serving as its faculty adviser or working with the political science honorary society after regular business hours, Bill is seeking ways to give back to Mizzou and to the broader Columbia community."

ANGELA SPECK



Professor of Astrophysics, Department of Physics and Astronomy

When people describe Angela Speck as "stellar" or a "shining star in her field," they aren't choosing words lightly. As one of only two astronomers at MU, Speck is spearheading efforts to take the department to the next level.

In her role as department director, Speck revamped the curriculum geared toward nonscience majors, established upper-level courses in astronomy and implemented new teaching methods.

Along with postdoctoral fellow Lanika Ruzitskaya and College of Education Professor Jim Laffey, Speck received a National Science Foundation grant to develop a 3-D model of Jupiter to help nonscience majors better understand the science, which Ruzitskaya wrote is cementing MU as a "pioneer in the field of technology-enhanced education in astronomy."

"She teaches students not only about physical phenomena in astronomy and physics but also

how to understand the nature of science," Ruzitskaya wrote. "She believes that understanding the scientific process is much more valuable than recollection of formulas and facts."

Whether her classroom is full of science fiction fanatics or astrophysicists, Speck cultivates an interest in astronomy.

"She weaves the course into a novel, in which every class lecture is part of a chapter of that novel," wrote student David Arrant. "Just as one gets captivated into a great novel, one gets captivated into her class."

Speck also serves as the MU representative to the Centers for the Integration of Research, Teaching and Learning, a network of 25 universities committed to preparing graduate students for teaching STEM disciplines.

"Education is the thread that binds my research, teaching and service together," Speck wrote of her teaching philosophy.

She combines her passions through her multiple community outreach efforts, including a monthly *Cosmic Conversations* lecture series, guided tours of the Laws Observatory and classroom visits for K-12 students.

"[She is an] outstanding educator — not one who merely imparts information but who opens doors and possibilities to others through her teachings," wrote Deborah Hanuscin, associate professor of science education.

Deaton receives award for his contribution to economic development in foreign countries

The Wharton Award is given by Cornell University's Emerging Markets Program

Chancellor Brady J. Deaton was honored April 18 at Cornell University with the Dr. Clifton R. Wharton, Jr., Award for his accomplishments in higher education and foreign economic development. Cornell's Emerging Markets Program, formed to open a dialogue on emerging international market economies, confers the award annually.

During his career, Deaton has given administrative assistance to Thailand and other Southeast Asian countries. He offered expertise on the 1997 Asian economic crash and after the 2004 tsunami that struck Indonesia, Sri Lanka, India and Thailand.

On Feb. 23, 2012, Deaton received an honorary doctorate in public administration from Khon Kaen University in Thailand. At the ceremony in Reynolds Alumni Center, Peerasiit Kamnuansilpa, adviser

to the dean for research and international affairs at Khon Kaen, told Deaton that the degree is only "a small fraction of your many contributions to Thailand."

In 2011, Deaton was appointed by President Barack Obama to chair the Board for International Food and Agriculture Development, which explores ways through science and public policy to feed the world's impoverished people.

The Wharton Award is given to someone who's shown outstanding service, leadership and contribution to economic progress in emerging markets. The award's namesake, Clifton R. Wharton, was a philanthropist and economist who aided Southeast Asian economies.

Last year's Wharton recipient was Per Pinstrup-Anderson, a Danish economist and policymaker who has worked to reform food subsidy programs on a global scale. In 2011, Willene A. Johnson, economic consultant specializing in finance and development, received the award.

MU creates exit counseling program to help students with debt management

FINANCIAL AID
Mizzou's median student borrowing is 30 percent lower than national average

In order to help students manage debt after graduation, the University of Missouri's Student Financial Aid office and the Office for Financial Success (OFS) are launching a new counseling program that provides one-on-one counseling sessions for students. In the program's first two weeks of operation, approximately 500 students have scheduled appointments.

"As spring commencement approaches, we often get a lot of questions from graduating students about their loans and how they will repay them," said Nicholas Prewett, MU director of financial aid. "Exit counseling is a federal requirement and, usually, is completed online. However, our students told us that they wanted more detailed information. So we created this counseling service, so that students could get one-on-one advice from financial professionals."

Students can use the counseling service to seek advice on loan

history, choices of repayment plans, options available through the federal government, deferment and forbearance options, loan forgiveness and cancellation provisions, and the pros and cons of loan consolidation.

MU's median student borrowing is 30 percent lower than the national average. The average MU student borrower will pay about \$222 per month after graduation.

"We believe that it is increasingly important for students to understand their finances after they graduate and how any amount of debt will impact their budgets," said Ryan Law, director of OFS. "Not only do staff members from the Office for Financial Success have educational backgrounds in financial planning, they also are trained peer counselors. They can help students

in almost any type of situation."

While the counseling service is new on campus, Prewett has seen an immediate interest from the student body.

"We're very pleased with the initial response to this program," he said. "This demonstrates to us that our students understand the responsibility of financial debt and are working to make sure they handle their future finances responsibly."

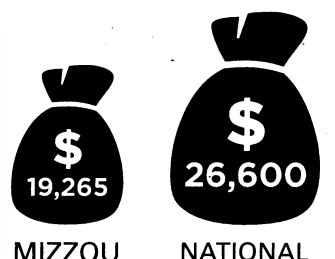
The one-on-one counseling services for students are available 9 a.m.-3 p.m. Monday through Friday in the OFS or by appointment. OFS is a part of the College of Human Environmental Sciences at MU.

— Jerrett Rion

Median Total Borrowing
Typical amount of federal loans for undergraduate study:

Loan Default Rate
Percentage of borrowers entering repayment and defaulting on their loan:

3.9% MIZZOU **13.4%** NATIONAL



Spring on Francis Quadrangle



The University of Missouri enjoyed a respite from weeks of above-average rain and below average temperatures earlier this week. Tuesday's temperature reached the mid-80s.

Photos by Rob Hill



CAL COLUMBIA ART LEAGUE PRESENTS

JUNES 2013

1st & 2nd

STEPHENS LAKE PARK
artintheparkcolumbia.org



Achieve Balance Chiropractic
 Cable Installers of America
 Fast Signs
 Ingredient Restaurant
 KBIA
 Karis Church
 KOMU/Mid-Missouri's CW
 Missouri Cotton Exchange
 Parkade Center
 Ragtag Cinema
 Shelter Insurance
 Socket
 Treats Unleashed

University Libraries
University of Missouri

Digitization Information Page

Local identifier MizzouWeekly(print)

Source information

Format Newspaper
Content type Text with images
Source ID Duplicate copies University Archives weeded out
Notes

Capture information

Date captured July-December, 2022
Scanner manufacturer Plustek OpticBook
Scanner model A300 Plus
Scanning system software Book Pavilion
Optical resolution 600 dpi
Color settings 8 bit grayscale for majority of pages;
 24 bit color for color illustrations/portraits/photographs
File types tiff
Notes

Derivatives - Access copy

Compression Tiff: LZW compression
Editing software Adobe Photoshop 2022
Resolution 600 dpi
Color same as captured
File types pdf created from tiffs
Notes Images cropped, straightened, and brightened.