

# MIZZOU

W E E K L Y

University of Missouri - Columbia / Jan. 26, 1995

## ON THE INSIDE

Page 3 Area legislators predicted budget focus.

Page 4 Anesthesiologist develops new way to measure pain in infants.

## WINTER '95 SEMESTER CALENDAR

## Prison funding top priority

*Governor recommends 2.4 percent increase in UM funding*

A priority on building new prisons in Missouri will squeeze the state budget and result in an appropriation for the UM System that will be slightly lower than University planners had hoped.

In his Jan. 18 State of the State speech to a joint session of the Legislature, Gov. Mel Carnahan outlined his budget recommendations for the 1995-96 fiscal year. While the state corrections department is in line for an increase of more than 27 percent in state funding, many other departments received much smaller increases.

For the University of Missouri System, the governor recommended \$319.6 million in state appropriations for ongoing programs. That's a 2.4 percent — or nearly \$7.6 million — increase in core funding.

Carnahan also recommended a one-time appropriation of \$8.26 million for the University for information technol-

ogy, academic equipment and matching funds for endowed professorships.

Including the one-time funds, the governor's budget calls for a total allocation of \$327.86 million for the University's operating budget, an overall increase of 5.1 percent.

"Although we are disappointed that the governor's recommendation is less than the Higher Education Price Index, we are realistic and appreciate that the state has other needs," MU Chancellor Charles Kiesler said. "Mizzou will continue to be a national model of how a university can prosper in higher education's most challenging times."

The UM System had requested an increase of nearly 10 percent, while the state Coordinating Board for Higher Education recommended 8.9 percent.

At MU, strategic planning assumes that base funding

from the state will keep pace with the HEPI. For the next fiscal year, there will be an estimated rise in the HEPI of 3.2 percent, says Pat Morton, director of MU's Institutional Research, Budget and Planning.

Therefore, the governor's recommended increase of 2.4 percent in the University's ongoing state allocation translates into a \$1.7 million shortfall for the MU campus, Morton says.

One bright spot in the governor's budget is an additional \$10.7 million allocation for the two highest-priority rehabilitation projects at MU. Carnahan recommended spending more than \$6 million to rehab the old Veterinary Medicine Building and \$4.66 million to rehab Townsend Hall.

The governor also asked for an inflationary increase of 2 percent for University-related programs, such as University Hospital and Clinics, Ellis Fischel Cancer Center, the State Historical Society and the Missouri Institute for Mental Health.

In recent years, the MU campus has received slightly less than half of the state appropriation for the UM System. State lawmakers still could modify the governor's budget during the legislative session and appropriate more for the University.

Last week's record snowfall virtually paralyzed mid-Missouri. At MU, classes were suspended for one day and most "nonessential" employees stayed home.

Rob Hill photo



## Snow cancels classes for first time in 17 years

*Missed work should be reported as vacation or personal time.*

Last week's record-breaking snowstorm caused the cancellation of classes at MU for the first time since 1978 and forced employees to take an unscheduled vacation.

"We canceled classes, but we did not shut

down the University," said Kee Groshong, vice chancellor for administrative services. "We have so many critical operations here — 4,000 to 4,500 students who live on campus and expect to be fed, 24-hour opera-

tions at University Hospitals, ongoing research and research animals that have to be taken care of — we really can't shut it down."

In extraordinary situations such as last week's, employees with four-wheel drive vehicles are asked to help transport essential personnel, he said. If the University were to close all offices, as it did during the '78 snowstorm, essential employees would have to be paid overtime, Groshong noted.

Chancellor Charles Kiesler and other campus officials decided to cancel classes Thursday morning at about 9:30. Road conditions were a factor, Groshong said, but the information that finally tipped the scales

was the National Weather Service prediction that the snow was likely to continue throughout the day. Those predictions were on target — within 24 hours, Columbia had received 19.7 inches of snow, the most on record.

Groshong said officials considered canceling classes again on Friday, but decided campus thoroughfares were in adequate shape.

In addition to vacation and personal time, work missed also may be taken as an excused absence without pay.

Maj. Jack Watring, associate director of the University Police Department, said many minor accidents occurred on campus but no serious injuries were reported.

### EDUCATIONAL ASSISTANCE MAY BECOME TAXABLE

UM employees who take classes as part of the University's educational assistance program are advised that the 75 percent of their educational fees that are waived may become taxable subject to withholding and other payroll taxes.

Such benefits have been tax-free under Section 127 of the Internal Revenue Code. Although Section 127 expired Dec. 31, University officials are hopeful that Congress soon will extend it retroactively. But if this doesn't happen, the value of the benefit received may need to be included in 1995 reports of gross income, with appropriate payroll taxes withheld.

Undergraduate education and certain job-related courses may meet other Internal Revenue Code provisions that allow such benefits to be excluded from taxable income.



### ADULT LEARNING CENTER SEEKS VOLUNTEERS

The Adult Learning Center, sponsored by the Columbia Public Schools, needs volunteer tutors to help adults (age 16 or older) acquire basic skills. Tutor-training workshops begin Thursday, Feb. 2. These sessions will present information on the literacy needs of Boone County, characteristics of adult learners and strategies for working with an adult in reading, writing and math. Other volunteer activities include publicity, recruitment and clerical opportunities. To sign up, or for more information, call 886-2271.

### ANNUAL ART AUCTION TO BENEFIT MIRACLE NETWORK

University Hospital and Clinics' Staff Council will sponsor its annual art auction for the Children's Miracle Network on Saturday, Jan. 28.

The art will be on display at 6 p.m. in the Columns Room of Donald W. Reynolds Alumni Center. Original oils, watercolors, acrylics and a diverse selection of signed and numbered works by famous artists and artists of potential will be exhibited. The auction will begin at 7 p.m.



All works are custom framed and will be accompanied by a certificate of authenticity. The works range in value from \$35 to \$3,000. Tickets to win a signed lithograph will be available at the door or in advance from members of the hospital's staff council.

All proceeds benefit the Children's Miracle Network, a year-round program of fund raising for the support of equipment, programs and services at Children's Hospital.

## Disabilities expert asks universities to act with "good faith" in complying with ADA

Jane Jarrow, a national expert on disability issues in higher education, had a simple message for the University community during her Jan. 18 visit to Mizzou:

"We should always provide constant reminders that students with disabilities are alive and well and are functioning members of the University," Jarrow said.

She is executive director of the Association on Higher Education and Disability. Headquartered at The Ohio State University in Columbus, AHEAD is an international, multicultural organization committed to full participation in higher education for persons with disabilities.

Her professional experience brings a rich perspective on higher education and disability. Jarrow has directed a U.S. Department of Justice program to develop discrimination-free testing and certification policies for people with disabilities. She also has provided training on disabilities for dozens of professional organizations and has consulted with more than 80 colleges and universities.

Jarrow's visit to MU was part of a continuing University initiative to bring the most up-to-date expertise to campus to address national issues facing the higher education community. Jarrow spent the day

meeting with groups of faculty, administrators and student services staff. She also met with campuswide disability groups and fielded questions at an open forum.

Jarrow spoke extensively on the Americans With Disabilities Act and the impact that federal law is having on colleges and universities around the country. She responded to questions from a number of faculty asking how they can maintain an appropriate balance between academic standards and responsible accommodation for students with disabilities.

"There are two and only two rules that institutions and individuals have to remem-

ber when making decisions about accommodations for people with disabilities," Jarrow said.

"Use good sense and make a good-faith effort to comply with the law as you understand it. You don't get in trouble for making the wrong decision; you get in trouble for refusing to try."

She urged faculty and staff to use the resources available on campus, such as the Access Office for Students With Disabilities.

Jarrow also spoke about MU's long tradition as a national leader in providing access for students, faculty and staff who have disabilities. "In this day and age, many of the students that we're dealing with have invisible disabilities," she said. "Our new job is to make sure that as this population shifts, there also is a shift in our planning so that students today will be as well-served as students were in the past."

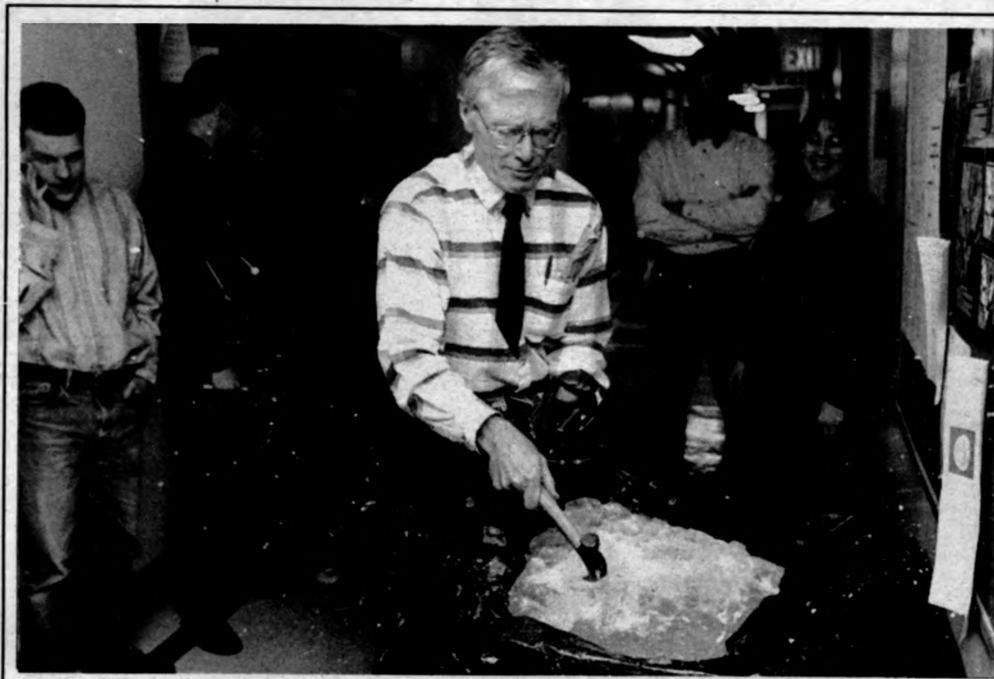
FOR THE

## RECORD

The 'For the Record' column gives MU departments and units the opportunity to advertise used or unneeded equipment for sale. There is no charge for this service. Send your notice to John Beahler at 407 Reynolds Center, or call 882-5918.

### UNIVERSITY HOSPITAL OFFERS

**WATERWORKS**, a water aerobics program, from 5:30 to 6:30 p.m. on Tuesdays and Thursdays at Wilson's Total Fitness. The exercise offers the health benefits of land aerobics, while letting you control the level of workout intensity, stay cool and spare your joints. Three-, six and 12-month cards are available at reasonable rates. Call Education and Training (882-4162) for more information.



The holidays often bring unusual gifts, but it would be hard to top the Christmas present delivered to Walter Schroeder, assistant professor of geography, — a chunk of glacier ice former student Scott Christy collected off the Alaska coast.

Christy and Lisa Cogar, one of Schroeder's current graduate students, packed the mini-glacier in dry ice and shipped it to Schroeder by Federal Express.

The ice, probably thousands of years old, ended its days chilling out in a punch bowl at the Geography department's Christmas party.

Rob Hill photo

## CLASSIFIEDS

### FOR SALE

4MB, 72-PIN SIM for Macintosh. Brand new; removed to make room for memory upgrade. 443-8130.

80,000 BOOKS. Have fun browsing. Open 1-5:30 p.m. daily except Sunday. 214 N. Eighth, below the courthouse. Call Ike at 443-5350 or 442-7989.

### FOR RENT

THREE-BEDROOM, 2.5-bath, two-story executive home with two-car attached garage, large kitchen, fireplace, separate dining room. Located in great neighborhood. \$800 a month. Available Feb. 10. 875-0234.

### SERVICES

PHD IN ENGLISH with 20-years college teaching and experienced in editing will edit books, monographs, dissertations, papers for publication or presentation, proposals, newsletters. Office near campus. Telephone 445-6690.

### TAX RETURN PREPARATION.

Federal, state, multi-state. Clients in 26 states and overseas. 26-years experience with higher education returns. Call 445-6530 for confidential appointment. New clients — first hour free with this ad.

COMPUTERIZED TAX RETURNS. Will prepare your taxes professionally at

reasonable rates, using the latest in laser tax software. References available upon request. Confidentiality assured. Over 10-years experience. Please call Kellogg Business Services at 445-7557.

The Classified Advertising Section is open only to faculty and staff members and retirees. A home phone number is required in all classified ads. No refunds will be given for cancelled ads.

### Ads must be typed.

Rates: 30-word maximum \$3.

### Publication deadlines:

Jan. 31 deadline for Feb. 9 issue

Feb. 6 deadline for Feb. 16 issue

**Mizzou Weekly Classifieds:** Make your

check payable to University of Missouri and send to: *Mizzou Weekly*, 407 Reynolds Center, Attention: Tanya Stitt.

# MIZZOU WEEKLY

Vol. 16

No. 17

A publication of the University of Missouri-Columbia faculty and staff, published every Thursday during the academic year and twice a month during the summer by Publications and Alumni Communication, a department of University Affairs, 407 Reynolds Alumni and Visitor Center, 882-7357. News deadline is noon Thursday the week before publication. Annual subscriptions are available for \$20.

Editor: Susan France Salzer

Assistant editor: John Beahler

Staff writers: Sue Richardson, Jim Kely

Student Assistant: Christie Studd

Director of Advertising: Tanya Stitt

Graphic editor: Nancy Daniel



Printed with soy ink on recycled newspaper containing 90 to 100 percent post-consumer waste.

# BLACK HISTORY MONTH

## 1995 BLACK HISTORY MONTH DEDICATED TO PROFESSOR EMERITUS WALTER DANIEL

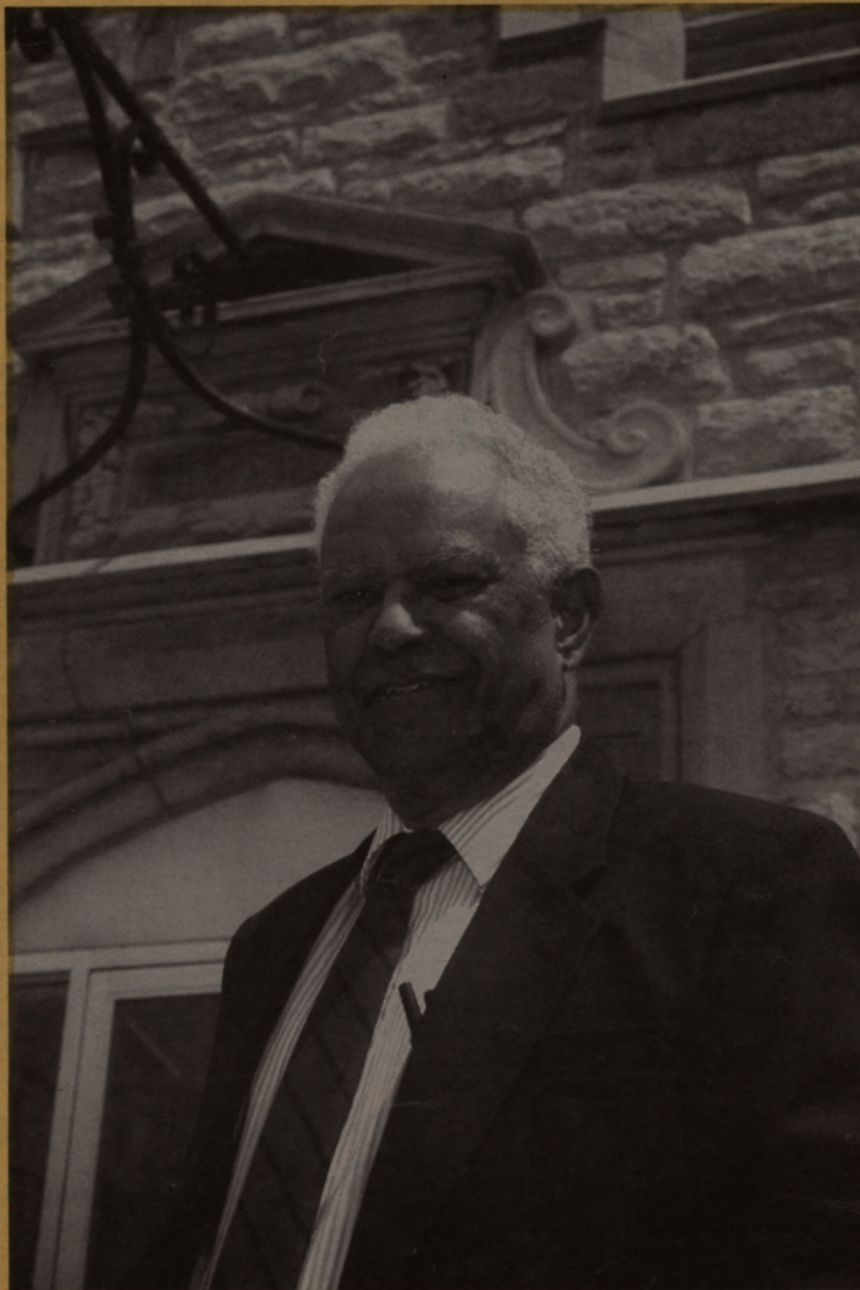
In recognition of Walter Daniel's contributions to higher education, MU is dedicating this year's Black History Month program to him.

"Dr. Daniel's contributions to education are outstanding," says Arvarh Strickland, professor of history and interim director of black studies.

Daniel came to MU in 1972 as a professor of English and the campus's first vice-chancellor. Prior to this, Daniel was president of Lincoln University in Jefferson City where he was "instrumental in getting the worth of that university recognized throughout the state," Strickland says.

As MU's vice chancellor, Daniel advanced the cause of affirmative action and began actively to recruit African Americans to campus, while simultaneously developing a campus academic plan and coordinating the University's budget. A teacher in the Honors College, Daniel taught the Harlem Renaissance, the Writing of Martin Luther King Jr., and Depression-era Playwrights. His published works on Langston Hughes and Richard Wright chronicle the contributions of black writers to American literature.

Daniel constructed and taught all the English Department's advanced courses in African-American literature. Before he retired as professor emeritus of English in 1989, he served as director of the College of General Studies (now Special Degree Programs) and as interim director of black studies. Daniel, who lives in Columbia, earned a PhD at Bowling Green (Ohio) University.



## WINTER SEMESTER CALENDAR

UNIVERSITY OF MISSOURI-COLUMBIA

JAN. 26, 1995

ALL EVENTS ARE FREE AND OPEN TO THE PUBLIC UNLESS OTHERWISE INDICATED.

# CONCERTS & PLAYS

## JANUARY

**Saturday, Jan. 28**

**CONCERT SERIES:** What'Ya Know? Comedy Quiz Show, 10 a.m., in Jesse Auditorium. With questions, call 882-3781.

## FEBRUARY

**Sunday, Feb. 5**

**CONCERT SERIES:** American Family Theater will present *Cinderella* at 3 p.m. in Jesse Auditorium. For ticket information, call 882-3781.

**Thursday, Feb. 9**

**FINE ARTS SERIES:** The Department of Theater will present *Red Noses*, directed by Elisabeth Hostetter and Sharon Kilarski, at 8 p.m. in the Corner Playhouse. Cost: \$5 all seats. For ticket information call 882-PLAY.

**Friday, Feb. 10**

**FINE ARTS SERIES:** The Department of Theater will present *Red Noses*, directed by Elisabeth Hostetter and Sharon Kilarski, at 8 p.m. in the Corner Playhouse. Cost: \$5 all seats. For ticket information, call 882-PLAY.

**Saturday, Feb. 11**

**FINE ARTS SERIES:** The Department of Theater will present *Red Noses*, directed by Elisabeth Hostetter and Sharon Kilarski, at 8 p.m. in the Corner Playhouse. Cost: \$5 all seats. For ticket information, call 882-PLAY.

**Sunday, Feb. 12**

**CONCERT SERIES:** Boys Choir of Harlem and Blind Boone Highsteppers will perform at 7 p.m. in Jesse Auditorium. For ticket information, call 882-3781.

**Thursday, Feb. 16**

**FINE ARTS SERIES:** The Department of Theater will present *Red Noses*, directed by Elisabeth Hostetter and Sharon Kilarski, at 8 p.m. in the Corner Playhouse. Cost: \$5 all seats. For ticket information, call 882-PLAY.

**CONCERT SERIES:** Kansas City Symphony will perform at 8 p.m. in Jesse Auditorium. For ticket information, call 882-3781.

**Friday, Feb. 17**

**CONCERT SERIES:** Wynton Marsalis Septet will perform at 8 p.m. in Jesse Auditorium. For ticket information, call 882-3781.

**FINE ARTS SERIES:** The Department of Theater will present *Red Noses*, directed by Elisabeth Hostetter and Sharon Kilarski, at 8 p.m. in the Corner Playhouse. Cost: \$5 all seats. For ticket information, call 882-PLAY.

**Saturday, Feb. 18**

**FINE ARTS SERIES:** The Department of Theater will present *Red Noses*, directed by Elisabeth Hostetter and Sharon Kilarski, at 8 p.m. in the Corner Playhouse. Cost: \$5 all seats. For ticket information, call 882-PLAY.

**Sunday, Feb. 19**

**FINE ARTS SERIES:** The Department of Theater will present *Red Noses*, directed by Elisabeth Hostetter and Sharon Kilarski, at 2 p.m. in the Corner Playhouse. Cost: \$5 all seats. For ticket information, call 882-PLAY.

**Thursday, Feb. 23**

**FINE ARTS SERIES:** The Department of Theater will present *P.S. Your Cat is Dead*, directed by Richard Klepac, at 8 p.m. in Rhynsburger Theatre. Cost: \$7 general, \$6 faculty/staff/senior citizens, \$5 students. For ticket information, call 882-PLAY.

**Friday, Feb. 24**

**FINE ARTS SERIES:** The Department of Theater will present *P.S. Your Cat is Dead*, directed by Richard Klepac, at 8 p.m. in Rhynsburger Theatre. Cost: \$7 general, \$6 faculty/staff/senior citizens, \$5 students. For ticket information, call 882-PLAY.

**Saturday, Feb. 25**

**BLACK HISTORY MONTH PRODUCTION:** The Department of Theater will present *Free Within Ourselves: The Adapted Works of Langston Hughes* at 8 p.m. in the Corner Playhouse. Cost: \$5. Call 882-7529.

**FINE ARTS SERIES:** The Department of Theater will present *P.S. Your Cat is Dead*, directed by Richard Klepac, at 8 p.m. in Rhynsburger Theatre. Cost: \$7 general, \$6 faculty/staff/senior citizens, \$5 students. For ticket information, call 882-PLAY.

**Sunday, Feb. 26**

**CONCERT:** Tim McGraw, Little Texas and Blackhawk will play at the Hearnes Center at 7:30 p.m. Feb. 26. Cost: \$22.50 and \$15.50. Call 1-800-CAT-PAWS.

## MARCH

**Thursday, March 2**

**FINE ARTS SERIES:** The Department of Theater will present *P.S. Your Cat is Dead*, directed by Richard Klepac, at 8 p.m. in Rhynsburger Theatre. Cost: \$7 general, \$6 faculty/staff/senior citizens, \$5 students. For ticket information, call 882-PLAY.

**Friday, March 3**

**FINE ARTS SERIES:** The Department of Theater will present *P.S. Your Cat is Dead*, directed by Richard Klepac, at 8 p.m. in Rhynsburger Theatre. Cost: \$7 general, \$6 faculty/staff/senior citizens, \$5 students. For ticket information, call 882-PLAY.

**Saturday, March 4**

**FINE ARTS SERIES:** The Department of Theater will present *P.S. Your Cat is Dead*, directed by Richard Klepac, at 8 p.m. in Rhynsburger Theatre. Cost: \$7 general, \$6 faculty/staff/senior citizens, \$5 students. For ticket information, call 882-PLAY.

**Sunday, March 5**

**FINE ARTS SERIES:** The Department of Theater will present *P.S. Your Cat is Dead*, directed by Richard Klepac, at 2 p.m. in Rhynsburger Theatre. Cost: \$7 general, \$6 faculty/staff/senior citizens, \$5 students. For ticket information, call 882-PLAY.

**Saturday, March 11**

**CONCERT SERIES:** New York City Opera National Company will present Rossini's *Barber of Seville* at 8 p.m. in Jesse Auditorium. For ticket information, call 882-3781.

**Thursday, March 30**

**FINE ARTS SERIES:** The Department of Theater will present *Nobody Doesn't Like Harvey Schwartz*, directed by Rodger Smith, at 8 p.m. in the Corner Playhouse. Cost: \$5 all seats. For ticket information, call 882-PLAY.

**CONCERT SERIES:** BBC Philharmonic Orchestra will perform at 8 p.m. in Jesse Auditorium. For ticket information, call 882-3781.

**Friday, March 31**

**FINE ARTS SERIES:** The Department of Theater will present *Nobody Doesn't Like Harvey Schwartz*, directed by Rodger Smith, at 8 p.m. in the Corner Playhouse. Cost: \$5 all seats. For ticket information, call 882-PLAY.

## APRIL

**Saturday, April 1**

**FINE ARTS SERIES:** The Department of Theater will present *Nobody Doesn't Like Harvey Schwartz*, directed by Rodger Smith, at 8 p.m. in the Corner Playhouse. Cost: \$5 all seats. For ticket information, call 882-PLAY.

**Monday, April 3**

**CONCERT SERIES:** Itzhak Perlman will perform on violin at 8 p.m. in Jesse Auditorium. For ticket information, call 882-3781.

**Thursday, April 6**

**FINE ARTS SERIES:** The Department of Theater will present *Nobody Doesn't Like Harvey Schwartz*, directed by Rodger Smith, at 8 p.m. in the Corner Playhouse. Cost: \$5 all seats. For ticket information, call 882-PLAY.

**Friday, April 7**

**FINE ARTS SERIES:** The Department of Theater will present *Nobody Doesn't Like Harvey Schwartz*, directed by Rodger Smith, at 8 p.m. in the Corner Playhouse. Cost: \$5 all seats. For ticket information, call 882-PLAY.

**Saturday, April 8**

**FINE ARTS SERIES:** The Department of Theater will present *Nobody Doesn't Like Harvey Schwartz*, directed by Rodger Smith, at 8 p.m. in the Corner Playhouse. Cost: \$5 all seats. For ticket information, call 882-PLAY.

**CONCERT SERIES:** University Choral Union and University Philharmonic will present the Spring Concert at 8 p.m. in Jesse Auditorium. For ticket information, call 882-3781.

**Sunday, April 9**

**FINE ARTS SERIES:** The Department of Theater will present *Nobody Doesn't Like Harvey Schwartz*, directed by Rodger Smith, at 2 p.m. in the Corner Playhouse. Cost: \$5 all seats. For ticket information, call 882-PLAY.

**Thursday, April 20**

**FINE ARTS SERIES:** The Department of Theater will present *The Rover*, directed by Weldon B. Durham, at 8 p.m. in Rhynsburger Theatre. Cost: \$7 general, \$6 faculty/staff/senior citizens, \$5 students. For ticket information, call 882-PLAY.

**Friday, April 21**

**FINE ARTS SERIES:** The Department of Theater will present *The Rover*, directed by Weldon B. Durham, at 8 p.m. in Rhynsburger Theatre. Cost: \$7 general, \$6 faculty/staff/senior citizens, \$5 students. For ticket information, call 882-PLAY.

**Thursday, April 27**

**FINE ARTS SERIES:** The Department of Theater will present *The Rover*, directed by Weldon B. Durham, at 8 p.m. in Rhynsburger Theatre. Cost: \$7 general, \$6 faculty/staff/senior citizens, \$5 students. For ticket information, call 882-PLAY.

**Friday, April 28**

**FINE ARTS SERIES:** The Department of Theater will present *The Rover*, directed by Weldon B. Durham, at 8 p.m. in Rhynsburger Theatre. Cost: \$7 general, \$6 faculty/staff/senior citizens, \$5 students. For ticket information, call 882-PLAY.

**CONCERT SERIES:** Juilliard String Quartet will perform at 8 p.m. in Jesse Auditorium. For ticket information, call 882-3781.

**Saturday, April 29**

**FINE ARTS SERIES:** The Department of Theater will present *The Rover*, directed by Weldon B. Durham, at 8 p.m. in Rhynsburger Theatre. Cost: \$7 general, \$6 faculty/staff/senior citizens, \$5 students. For ticket information, call 882-PLAY.

**Sunday, April 30**

**FINE ARTS SERIES:** The Department of Theater will present *The Rover*, directed by Weldon B. Durham, at 2 p.m. in Rhynsburger Theatre. Cost: \$7 general, \$6 faculty/staff/senior citizens, \$5 students. For ticket information, call 882-PLAY.

**It's not too late  
to get grrreat  
seats for:**

**RED NOSES**  
Feb 9-11/16-19

**P.S. YOUR CAT  
IS DEAD**  
Feb 23-25/Mar 2-5

**NOBODY DOESN'T LIKE  
HARVEY SCHWARTZ**  
Mar 30-Apr 1/6-9

**THE ROVER**  
Apr 20-22/27-30

For Tickets Call the  
**Rhynsburger Theatre**  
Box Office at  
**882-PLAY**  
MU Department of Theatre

## UNIVERSITY CONCERT SERIES SEASON OF EXCELLENCE



Clockwise, from right,  
■ Rossini's Barber of Seville, New York City Opera National Company, 8 p.m., March 11  
■ Whad'ya Know? Comedy Quiz Show, 10 a.m., Jan. 28  
■ Boys Choir of Harlem, 7 p.m., Feb. 12  
■ Kansas City Symphony, Joseph Silverstein, conductor/violin, 8 p.m., Feb. 16  
■ Wynton Marsalis Septet, 8 p.m., Feb. 17  
■ BBC Philharmonic Orchestra, Yan Pascal Torteller, conductor, 8 p.m., March 30  
All performances at Jesse Auditorium. For ticket information, call the University Concert Series at 882-3781.



# COURSES

## JANUARY

**Friday, Jan. 27**

**RECREATION COURSES:** "Rec-Aerobics" will be offered weekly through May 5. All classes meet in Exercise Room B-301 Student Recreation Center. Free admission through Jan. 28. Punch cards, for sale in 320 SRC, are required for admission after Jan. 28. Cost: \$1 per session. All participants must sign a liability waiver prior to participation in any aerobic class. For more information, call 882-2066.

**FITWELL:** Fitwell offers exercise classes with varying fees; exercise consultation, cost: \$10; body composition analysis, cost: \$5; nutritional analysis, cost: \$10; and free, blood pressure screening, wellness analysis and health/fitness and wellness information. For more information about Fitwell call 882-0705 or stop by 335 Student Recreation Center.

### Textbooks on CD-ROM?

Let us give you a demonstration at our Textbook Information Desk.



Main Level Brady Commons  
882-7611 TDD: 882-3985  
M-Thurs: 8-7 Fri: 8-5 Sat: 9-4

*Your hands can bring your ideas into three-dimensional reality!*

The MSA/GPC Craft Studio will be offering the following arts and crafts classes starting the week of January 30th.



- Handbuilding With Clay
- Beginning and Intermediate Pot Throwing
- Four-Harness Weaving
- Basic Black & White Photography
- Introduction to Camera Techniques (color film)
- Jewelry Fabrication
- Black and White Photography
- Stained Glass
- Batik
- Woodworking



Call 882-2889 for more information.  
The Craft Studio is located at 203 Brady Commons on the University campus.

**Saturday, Jan. 28**

**WILDERNESS ADVENTURES:** "HaHa Tonka Hike" will be offered Jan. 28-29. Cost: \$35; includes transportation, food, equipment and instruction. For more information, call Wilderness Adventures at 882-3066 or 882-2817.

**RECREATION COURSES:** "Non-Credit Jazz Class" will be offered from 1-2:30 p.m. Saturdays Jan. 28-April 22 in Exercise Room B-301 Student Recreation Center. Free admission Jan. 28. After Jan. 28, cost: \$25. Limit 20 participants. Sign up in 320 SRC. For more information, call 882-2066.

**RECREATION COURSES:** "Ballroom Dance" will be offered from 4:30-6 p.m. Saturdays Jan. 28-April 22 in Exercise Room B-301 Student Recreation Center. Free admission Jan. 28. After Jan. 28, cost: \$25. Limit 24 participants. Sign up in 320 SRC. For more information, call 882-2066.

**Monday, Jan. 30**

**ENGINEERING EXTENSION:** "Professional Engineers Exam Preparation Course" will be offered Jan. 30-March 30 in Kansas City, Mo. Cost: \$585. For information, call Virginia Nettleton at 882-2087.

**UNIVERSITY EXTENSION:** "Beginning Piano Class" will be offered on Mondays from 7:15-9:15 p.m. Jan. 30-Apr. 24 in 1 Stewart Hall. For cost and registration information, call 882-3598.

**UNIVERSITY EXTENSION:** "Intermediate Piano Class" will be offered on Mondays from 5:15-7:15 p.m. Jan. 30-Apr. 24 in 1 Stewart Hall. For cost and registration information, call 882-3598.

**CHILDBIRTH CLASS:** "Beginning Childbirth" will be offered from 7-9 p.m. Mondays through Feb. 27 in the seventh-floor classroom at Ellis Fischel Cancer Center. Cost: \$45. To register, call 882-6973.

**Tuesday, Jan. 31**

**RECREATION COURSES:** "Water Exercise" will be offered from 5:10-6 p.m. Tuesdays and Thursdays Jan. 31-March 7. Cost: \$15. Must be an MU student, faculty or staff member to participate. Limit 16 participants for each session. Sign up in 320 Student Recreation Center. For more information, call Brad at 882-2066.

**RECREATION COURSES:** "Circuit Weight Training" will be offered on Tuesdays and Thursdays from 5:30-6:45 p.m. Jan. 31-March 9. Cost: \$25. Limit 18 participants. Sign up in 329 Student Recreation Center. For more information, call 882-2066.

## FEBRUARY

**Friday, Feb. 3**

**WILDERNESS ADVENTURES:** "Beginning Caving" will be offered. Cost: \$30. For more information, call Wilderness Adventures at 882-3066 or 882-2817.

**Saturday, Feb. 4**

**RECREATION COURSES:** "Tai Chi" will be offered on Saturday from 2:45-4:15 p.m. or Sundays from 2:50-4:20 p.m. Feb. 4-April 23 in Exercise Room B-301 Student Recreation Center. Cost: \$25. Limit 20 participants. Sign up in 320 SRC. For more information, call 882-2066.

**Monday, Feb. 6**

**NURSING EXTENSION:** "Advanced Physical Assessment" will be offered Feb. 6-7 in Springfield, Mo. For cost and registration information call 882-0215.

**NURSING EXTENSION:** "Through the Patient's Eyes" the Fourth Annual Patient Education Conference will be held Feb. 6-7 at the Holiday Inn Executive Center. For cost and registration information call 882-0215.

**Tuesday, Feb. 7**

**PEACEWORKS COURSE:** "Sustainable Living: Learning to Live in Harmony" will be offered on Tuesdays from 7-8:30 p.m. Feb. 7-March 21 at Calvary Episcopal Church. Advance registration is requested. Cost: \$20 regular and \$10 students. For more information, contact Elizabeth Jones at the Center of Sustainable Living, 875-0539.

**Thursday, Feb. 9**

**ENGINEERING EXTENSION:** "Annual Hazardous Materials Update" will be offered from 7 a.m.-5 p.m. in St. Louis. Cost: \$195. For information, call Virginia Nettleton at 882-2087.

**Friday, Feb. 10**

**WILDERNESS ADVENTURES:** "Mingo National Wildlife Refuge Trip" will be offered Feb. 10-12. Cost: \$75 includes transportation, food, equipment and instruction. For more information, call Wilderness Adventures at 882-3066 or 882-2817.

**ENGINEERING EXTENSION:** "Hazardous Materials 181-126F Training, Testing and Certification" will be offered at 7 a.m. in St. Louis. Cost: \$190. For information, call Virginia Nettleton at 882-2087.

**UNIVERSITY EXTENSION:** "Adobe Photoshop Workshop" will be offered Feb. 10 from 7-9 p.m., Feb. 11 from 8 a.m.-5 p.m. and Feb. 12 from noon-4 p.m. in 147 Stanley Hall. For cost and registration information call 882-3598.

**Tuesday, Feb. 14**

**EXPERIENTIAL EDUCATION CLASS:** "Wilderness Stewardship" will be offered Feb. 14-March 30. Cost: \$80 includes all equipment, food and transportation. Register at 320 Student Recreation Center. For more information, call 882-1067.

**Friday, Feb. 17**

**WILDERNESS ADVENTURES:** "Beginning Caving" will be offered. Cost: \$30. For more information, call Wilderness Adventures at 882-3066 or 882-2817.

**Monday, Feb. 20**

**EXPERIENTIAL EDUCATION CLASS:** "Outdoor Sketching and Photography" will be offered from 5:30-8:00 p.m. Feb. 20-April 17. Cost: \$50, film and sketching supplies included; half-session available: \$30. Deadline for registration is Feb. 20. Sign up at 320 Student Recreation Center or call 882-1067.

**Wednesday, Feb. 22**

**ENGINEERING EXTENSION:** "Air Quality Management: Update 1995" will be offered in Kansas City. Cost: \$225. To register, call 882-3266.

**Friday, Feb. 24**

**WILDERNESS ADVENTURES:** "Beginning Caving" will be offered. Cost: \$30. For more information, call Wilderness Adventures at 882-3066 or 882-2817.

**WILDERNESS ADVENTURES:** "Big Oak Tree State Park Excursion" will be offered Feb. 24-26. Cost: \$95 includes transportation, food, equipment and instruction. For more information, call Wilderness Adventures at 882-3066 or 882-2817.

**Saturday, Feb. 25**

**UNIVERSITY EXTENSION:** "African-American History: A Synopsis" will be offered from 11 a.m.-5 p.m. Feb. 25-26 at the Black Culture Center. To register, call 882-3598.

**Friday, March 3**

**WILDERNESS ADVENTURES:** "Advanced Caving" will be offered. Cost: \$30. Previous cave tour required. For more information, call Wilderness Adventures at 882-3066 or 882-2817.

**Saturday, March 4**

**UNIVERSITY EXTENSION:** "Effective Small Business Advertising" will be offered from 9 a.m.-5 p.m. March 4-5 in 220 Walter Williams Hall. For cost and registration information call 882-3598.

**Wednesday, March 8**

**ENGINEERING EXTENSION:** "Air Quality Management: Update 1995" will be offered in St. Louis. Cost: \$225. To register, call 882-3266.

**Friday, March 10**

**UNIVERSITY EXTENSION:** "Adobe Illustrator Workshop" will be offered March 10 from 7-9 p.m., March 11 from 8 a.m.-5 p.m. and March 12 from noon-4 p.m. in 147 Stanley Hall. For cost and registration information, call 882-3598.

**Thursday, March 16**

**ENGINEERING EXTENSION:** "Introduction to Hazardous Waste Management" will be offered March 16-18 in St. Louis. Cost \$650 before March 2, \$745 after. To register, call Virginia Nettleton at 882-2087.

**Monday, March 20**

**RECREATION COURSES:** "Sunshine Walkers" will be offered on Mondays and Thursdays from 12:10-1 p.m. March 20-April 27. Cost: \$4. Sign up in 320 Student Recreation Center. Limit 25 participants. For more information, call Brad at 882-2066.

**Tuesday, March 21**

**RECREATION COURSES:** "Water Exercise" will be offered on Tuesdays and Thursdays from 5:10-6 p.m. at McKee Pool. Cost: \$15. Must be an MU student, faculty or staff member to participate. Limit 16 participants for each session. Sign up in 320 Student Recreation Center. For more information, call Brad at 882-2066.

## Campus Computing

# Short Courses

The following non-credit short courses are offered at no charge to MU faculty, staff and graduate students unless otherwise noted. *Registration is required and is done on a first-come, first-served basis.* Participants may be enrolled in **no more than two courses** at one time. To enroll, please call 882-2000. *Note:* This is only a partial list; additional courses will be advertised in future issues of the *Mizzou Weekly*.

### FOUNDATION OF COMPUTERS

**3: JAN. 31 AND FEB. 2 (TUESDAY/THURSDAY), 1:30 - 4:30 PM**  
**4: FEB. 13 AND 15 (MONDAY/WEDNESDAY), 9:00 AM - NOON**

Through lecture and hands-on exercises, the student will learn the fundamentals in both IBM and Macintosh platforms of computer hardware, what they do and how they function; different categories of software applications; terminology and basic computer manipulation; and disk and drive preparation for file management. The student will learn to interpret computer advertising and jargon to make educated decisions about purchasing and upgrading. The course will also include a discussion of how computers are linked together in networks through which they can share resources and information. The course concludes with a complete presentation of the University's computing facilities, training and where to get help.

### INTRODUCTION TO WORDPERFECT 5.1 FOR DOS

**1: FEBRUARY 1 (WEDNESDAY), 9:00 AM - NOON**  
**2: FEBRUARY 16 (THURSDAY), 9:00 AM - NOON**

This hands-on class provides participants with a quick review of DOS for WordPerfect users: command line basics such as changing drives, using switches, formatting floppy disks, making directories, the delete, copy, diskcopy and rename commands, wildcards and extensions. Participants will create, name, save, and retrieve a document file. Basic formatting (margins, page numbering, headers and footers, indentations, center, bold, etc.) and editing techniques (moving, copying and removing blocks) will be studied. Participants will also learn how to use the spell-check, help, and printing facilities.

Prerequisite(s): Foundation of Computers course or basic hands-on experience with personal computers.

### INTRODUCTION TO WORDPERFECT 3.0A FOR THE MACINTOSH FEBRUARY 1 (WEDNESDAY), 1:30 - 4:30 PM

This is an introductory, hands-on course for those who are already have experience with Macintosh basics. Topics include step-by-step instructions on how to enter, edit, style and format text, how to print a document, and brief coverage of more advanced features such as working with columns and graphics. Prerequisite(s): Foundation of Computers course or basic experience using a Macintosh.

### INTRODUCTION TO MACSLIP

**FEBRUARY 2 (THURSDAY), 1:30 - 4:30 PM**

This lecture/discussion will overview how to install/configure MacSLIP and MacTCP to allow your Macintosh to communicate with campus resources, and Internet resources world-wide. Prerequisite(s): Foundation of Computers course or basic hands-on experience with a Macintosh computer.

### FOCUS ON FACULTY

Computers are playing an increasingly-important role in academics. In response to the growth in the use of computing resources at MU, Campus Computing has added the following seminars for faculty members to our regular short course series.



### FODCUS ON FACULTY COURSES

**INTRODUCTION TO SHOWME/PINEMAIL  
FEBRUARY 3 (FRIDAY), 1:30 - 4:30 PM**

This hands-on class will introduce you to "logging on," manipulating electronic mail (email) and email etiquette on the academic Unix computer system, SHOWME. Prerequisites: A SHOWME ID is required prior to attending the class.

**INTRODUCTION TO RICEMAIL  
FEBRUARY 10 (FRIDAY), 1:30 - 4:30 PM  
266 HEINKEL BUILDING**

This hands-on class covers the basics of email use on the campus mainframe, MIZZOU1. Topics include email etiquette and how to send, receive, and manage email in notebooks. Uploading and downloading files will not be discussed. Prerequisite: Beginning CMS or basic CMS knowledge.

### Saturday, March 25

**WILDERNESS ADVENTURES:** "Birding the Thomas S. Baskett Wildlife Area" will be offered. Cost: \$17. For more information, call 882-3066 or 882-2817.

**UNIVERSITY EXTENSION:** "Portraits: Presented as Art" will be offered March 25 from 10 a.m.-5 p.m. and March 26 from noon-6 p.m. at Patterson Studio. Deadline to register is March 10. For cost and registration information, call 882-3598.

### Monday, March 27

**NURSING EXTENSION:** "Advanced Physical Assessment" will be offered March 27-28 in Cape Girardeau. For cost and registration information, call 882-0215.

### Friday, March 31

**WILDERNESS ADVENTURES:** "Fool's Head Backpack Weekend" will be offered March 31- April 2. Cost: \$65 includes transportation, food, equipment and instruction. For more information, call 882-3066 or 882-2817.

## APRIL

### Saturday, April 1

**WILDERNESS ADVENTURES:** "Beginning Rockclimbing" will be offered April 1-2. Cost: \$35. "Tucker Prairie Birding" will be offered April 1. Cost: \$15. For more information, call 882-3066 or 882-2817.

### Friday, April 7

**WILDERNESS ADVENTURE:** "Prairie State Park Adventure" will be offered April 7-9. Cost: \$60. For more information, call 882-3066 or 882-2817.

**UNIVERSITY EXTENSION:** "Aldus Freehand Workshop" will be offered April 7 from 7-9 p.m., April 8 from 8 a.m.-5 p.m. and April 9 from noon-4 p.m. in 147 Stanley Hall. For cost and registration information, call 882-3598.

### Saturday, April 8

**WILDERNESS ADVENTURES:** "Beginning Rockclimbing for Women" will be offered April 8-9. Cost: \$35. For more information, call Wilderness Adventures at 882-3066 or 882-2817.

### Friday, April 14

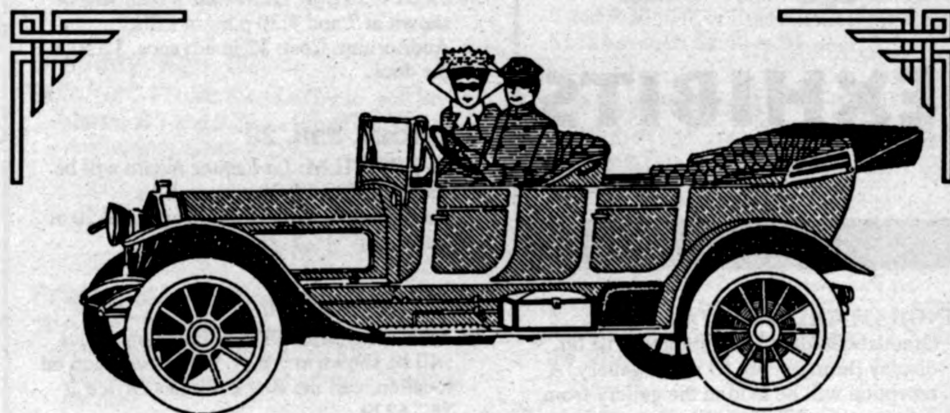
**WILDERNESS ADVENTURES:** "Cheyenne Bottoms Shorebird Festival" will be offered April 14-16. Cost: \$78 includes transportation, food, equipment and instruction. For more information, call 882-3066 or 882-2817.

### Saturday, April 15

**WILDERNESS ADVENTURES:** "Beginning Rockclimbing" will be offered April 15-16. Cost: \$35. "Fourth Annual Women's Hootenanny" will be offered April 15-16. Cost: \$35. For more information, call 882-3066 or 882-2817.

### Friday, April 21

**WILDERNESS ADVENTURES:** "Beginning Kayaking" will be offered April 21-23. Cost: \$55 includes an evening Eskimo roll clinic. This class is required in order to rent kayaks from Wilderness Adventures. For more information, call 882-3066 or 882-2817.



*All cars and trucks  
look new to us!*  
**New or Used, Same Low Rate**

*(with approved credit)*

**1/2 off for Payroll Deposits  
Pre-Approved Vehicle Loans  
No Prepayment Penalties  
Same Day Decision**

*(apps in by 2:00—current members only)*

Limited time offer — see your loan officer today!

**Call (314) 874-1477 or 1-800-451-1477**

for full details (some restrictions apply)



Mon. - Thurs. 7:30 am to 5:30 pm  
Friday 7:30 am to 6 pm  
Saturday 9 am to 12:30 pm

**NCUA**

1st & Broadway ♦ P.O. Box 1795 ♦ Columbia, Mo. ♦ 65205-1795  
Phone: 874-1477 or 1-800-451-1477 Fax: 874-1300

MU Faculty, Staff and families are eligible to join. Call for membership info today!





## MAY

### Friday, May 5

MSA/GPC FILM: *Dirty Harry* will be shown at 7 and 9:30 p.m. in Ellis Auditorium. Cost: \$2 in advance, \$2.50 at the door.

### Saturday, May 6

MSA/GPC FILM: *Dirty Harry* will be shown at 7 and 9:30 p.m. in Ellis Auditorium. Cost: \$2 in advance, \$2.50 at the door.



## JANUARY

### Friday, Jan. 27

CLASSICAL STUDIES LECTURE: Kenneth Kitchell from Louisiana State University, will present "To Rid Deucalion's Ark: New Windows on Antiquity" at 4:30 p.m. in 106 Pickard Hall.

## FEBRUARY

### Wednesday, Feb. 1

BLACK HISTORY MONTH LECTURE: Malaika Home, a member of the University Board of Curators, will present "Substance Abuse and the African American Family" from 1-2 p.m. in Memorial Union Studies Office at 882-6229.

PHYSIOLOGY SEMINAR: Jeff Henegar, graduate student of physiology, will present "The Effects of Long-Term Unilateral Naris Closure on the Olfactory Bulbs of Adult Mice" at 2:40 p.m. in M437 Medical Sciences Building. Refreshments will be served at 2:20 p.m. in M436A.

### Tuesday, Feb. 7

BLACK HISTORY MONTH SYMPOSIUM: The Roy Wilkins Symposium will be held from 10:15 a.m.-4:45 p.m. in Memorial Union N 214-215. "Roy Wilkins as a Journalist: The *Kansas City Call* Years, *Crisis* Years and the *Minnesota* Years" will be presented at

10:15 a.m.; "The Traditional Black Leader: Roy Wilkins as Executive Director of the NAACP" will be presented at 1:30 p.m.; "NAACP in the Post-Wilkins Era" will be presented at 3:30 p.m. Roger Wilkins, professor at George Mason University and nephew of Roy Wilkins, will present the keynote address at 7:30 p.m. in Jesse Auditorium. For more information, call the Black Studies Office at 882-6229.

### Wednesday, Feb. 8

PHYSIOLOGY SEMINAR: Ingrid Sarelus, professor of biophysics at the University of Rochester, will present "Regulations of Capillary Blood Flow and its Coupling to Metabolism in Striated Muscle" at 2:40 p.m. in M437 Medical Sciences Building. Refreshments will be served at 2:20 p.m. in M436A.

WORK STUDY STUDENT WORKSHOP: "Building Marketable Skills Through Your Work-Study Job" will be offered from 3:40-4:30 p.m. in 220 Noyes Hall. To register, call 884-6217.

### Thursday, Feb. 9

LUNCHTIME CONVERSATIONS ABOUT WRITING: Bob Bender, professor of English, will present "Lurching Toward the Paperless Classroom: Computers and WI Teaching" from 11:45 a.m.-12:45 p.m. in 325 GCB.

WORK STUDY STUDENT WORKSHOP: "Building Marketable Skills Through Your Work-Study Job" will be offered from 3:40-4:30 p.m. in 220 Noyes Hall. To register, call 884-6217.

### Tuesday, Feb. 14

TELECOMMUNICATIONS: "Using Telephone Features Effectively" will be offered from 1:30-3:30 p.m. in the basement conference room of the Telecom Building. To register, call 882-2177.

### Wednesday, Feb. 15

ARCHAEOLOGICAL LECTURE: Tasos Tanoulas, Archaeological Institute of America Kress Lecturer, will present "The Propylaea of the Athenian Acropolis From Antiquity to Our Day."

TELECOMMUNICATIONS: "Telephone Etiquette and the Effective Use of Phone/Voice Mail Features" will be offered from 1:30-3:30 p.m. in the basement conference room of the Telecom building. To register, call 882-2177.

### Monday, Feb. 20

CARDIOVASCULAR DAY: Tadashi Inagami, Stanford Moore Professor of Biochemistry at Vanderbilt University, will speak at Cardiovascular Day at 2:30 p.m. in the Columns Room at the Reynolds Alumni Center. Inagami is the first James O. Davis Distinguished Lecturer for Cardiovascular Day. Other presentations for the event begin at 8:30 a.m. and continue throughout the day. For more information contact 882-7586.

### Tuesday, Feb. 21

TELECOMMUNICATIONS: "Using the VoiceMemo System Effectively" will be offered from 1:30-3:30 p.m. in the basement conference room of the Telecom Building. To register, call 882-2177.

### Wednesday, Feb. 22

PHYSIOLOGY SEMINARS: John D. Strauss, Department of Molecular Physiology and Biological Physics at the University of Virginia, will present "Reversible Extraction of Toponin I in Skinned Muscle Fibers" at 2:40 p.m. in M437 Medical Sciences Building. Refreshments will be served at 2:20 p.m. in M436A.

WORK STUDY STUDENT WORKSHOP: "Deciding on a Major" will be offered from 3:40-4:30 p.m. in 220 Noyes Hall. To register, call 884-6217.

### Thursday, Feb. 23

WORK STUDY STUDENT WORKSHOP: "Deciding on a Major" will be offered from 3:40-4:30 p.m. in 220 Noyes Hall. To register, call 884-6217.

BLACK HISTORY MONTH LECTURE: Lois Jones, will present "Africa Through the Eyes of Women Artists: The Art Perspective of Lois Jones" at 7:30 p.m. at the Museum of Art and Archaeology in Pickard Hall.

### Friday, Feb. 24

BLACK HISTORY MONTH COLLOQUIUM: James F. Williams, director of libraries at University of Colorado-Boulder, will present "Library Dean/ Directorships in an Academic Context" at 3 p.m. in Parker Auditorium, Stewart Hall.

## MARCH

### Wednesday, March 1

PHYSIOLOGY SEMINAR: Jeff Jasperse, graduate student of physiology, will speak at 2:40 p.m. in M437 Medical Sciences Building. Refreshments will be served at 2:20 p.m. in M436A.

WORK STUDY STUDENT WORKSHOP: "Writing a Winning Resume" will be offered from 3:40-4:30 p.m. in 220 Noyes Hall. To register, call 884-6217.

### Thursday, March 2

WORK STUDY STUDENT WORKSHOP: "Writing a Winning Resume" will be offered from 3:40-4:30 p.m. in 220 Noyes Hall. To register, call 884-6217.

BLACK HISTORY MONTH LECTURE: Carolyn E. Dorsey, associate professor of educational leadership and policy analysis, will present "How I Found Olivia: the Olivia America Davidson Story" at 7:30 p.m. in S204 Memorial Union.

### Monday, March 6

ARCHAEOLOGICAL LECTURE: Elizabeth Stone, professor of anthropology at SUNY-Stony Brook, will speak on "Anatomy of a Mesopotamian City: The Mashkan-Shapir Project."

### Wednesday, March 8

PHYSIOLOGY SEMINAR: Greg Dick, graduate student of physiology, will present "Coronary Artery Reactivity in Pigs with Alloxan-Induced Diabetes Mellitus" at 2:40 p.m. in M437 Medical Sciences Building. Refreshments will be served at 2:20 p.m. in M436A.

BLACK HISTORY MONTH LECTURE: Lani Guinier will speak at 7:30 p.m. in Jesse Auditorium.

### Tuesday, March 14

TELECOMMUNICATIONS: "Using Telephone Features Effectively" will be offered from 1:30-3:30 in the basement conference room of the Telecom Building. To register, call 882-2177.

### Wednesday, March 15

TELECOMMUNICATIONS: "Telephone Etiquette and the Effective Use of Phone/Voice Mail Features" will be offered from 1:30-3:30 p.m. in the basement conference room of the Telecom building. To register, call 882-2177.

### Tuesday, March 21

TELECOMMUNICATIONS: "Using the VoiceMemo System Effectively" will be offered from 1:30-3:30 p.m. in the basement conference room of the Telecom Building. To register, call 882-2177.

### Wednesday, March 22

PHYSIOLOGY SEMINAR: Larry Magliola, research assistant professor of physiology, will present "Alterations of Calcium Metabolism in Hypertensive Rats" at 2:40 p.m. in M437 Medical Sciences Building. Refreshments will be served at 2:20 p.m. in M436A.

### Wednesday, March 29

PHYSIOLOGY SEMINAR: Kathy Supernant from the University of Kansas will present "Polyribosome Targeting to Microtubules" at 2:40 p.m. in M437 Medical Sciences Building. Refreshments will be served at 2:20 p.m. in M436A.

WORK-STUDY STUDENT WORKSHOP: "To Do or Not To Do: Effective Interviewing Skills" will be offered from 3:40-4:30 p.m. in 220 Noyes Hall. To register, call 884-6217.

### Thursday, March 30

WORK-STUDY STUDENT WORKSHOP: "To Do or Not To Do: Effective Interviewing Skills" will be offered from 3:40-4:30 p.m. in 220 Noyes Hall. To register, call 884-6217.

## APRIL

### Wednesday, April 5

PHYSIOLOGY SEMINAR: Thomas Quinn, assistant professor of biochemistry/molecular biology, will present "Development and Characterization of Radiolabeled Tumor Imaging and Therapeutic Agents" at 2:40 p.m. in M437 Medical Sciences Building. Refreshments will be served at 2:20 p.m. in M436A.

WORK STUDY STUDENT WORKSHOP: "Multiculturalism and the Workplace" will be offered from 3:40-4:30 p.m. in 220 Noyes Hall. To register, call 884-6217.

### Thursday, April 6

WORK-STUDY STUDENT WORKSHOP: "Multiculturalism and the Workplace" will be offered from 3:40-4:30 p.m. in 220 Noyes Hall. To register, call 884-6217.

### Tuesday, April 11

TELECOMMUNICATIONS: "Using Telephone Features Effectively" will be offered from 1:30-3:30 p.m. in the basement conference room of the Telecom Building. To register, call 882-2177.

### Monday, April 17

PHYSIOLOGY SEMINAR: Maggie Brown of the University of Birmingham-United Kingdom, will present "The Effects of Long-term Bradycardia Pacing on Capillary Growth and Perfusion in Normal and Infarcted Pig Hearts" at 2:40 p.m. in S255 Medical Sciences Building.

### PANIC ATTACK TREATMENT

The University of Missouri - School of Medicine, Division of Psychiatry is conducting a study of a new investigational medication for the treatment of panic attack. Qualifying participants need to meet the following criteria:

- \*Age 18-65 years
- \*At least 2-3 panic attacks within the 2 weeks immediately preceding screening
- \*Recurrent unexpected panic attacks in which 4 or more of the following symptoms develop suddenly and reach a peak within 10 minutes

- |   |  |
|---|--|
| -Racing and/or pounding heartbeat or chest pressure   | - Sweating, hot flashes, or chills             |
| -Shortness of breath or a sensation of smothering     | -Nausea or abdominal discomfort                |
| -Feeling dizzy, unsteady, light-headed or faint       | -Fear of dying or doing something uncontrolled |
| -Trembling, shaking, numbness, or tingling sensations |  |

If you or someone you know is interested in this study or would like more information, please call (314) 882-0408.

# Witness Excellence in Women's Athletics

*Best Wishes to these scholar-athletes  
at the Cat Classic, 7 p.m. Feb. 3 and 4*

*Arizona, Auburn, Kentucky, Penn State, Missouri, Pittsburgh*



**Call 1-800-CAT-PAWS for tickets**

*Members of the 1995 Gymnastics team.  
Top row, from left: Melisa Clark, Leah Hicks, Becky  
Neal, Lisa Akers, Chrissy Harkey, Beth Remillong and  
Amy Bowles. Second row, from left: Andrea Conner,  
Chanda Johnson, Rachel Byron, Kellie Copeland,  
Katie Sutter, Sarah Cooper, Jen Hillman (sitting) and  
Sara Alexander. Kneeling, from left: Amy Johnson  
and Charise Schrupp.*

# 50

# %OFF

Limit 10. Good 'til Feb. 28, 1995

## Full-color copies & Color Transparencies

Enhance your reports, budget presentations, lectures and graphs  
with full-color copies or transparencies.

Ask us about colorizing your black & white documents.

CALL OR WRITE

Ellis Library Copy Center  
115 Ellis Library  
Columbia, Mo. 65201-5149  
Phone: (314) 882-7262  
Fax: [314] 884-5004

Hours: Monday thru Thursday 7:30 a.m. to midnight • Friday 7:30 a.m. to 11 p.m. • Saturday 9 a.m. to 9 p.m. • Sunday Noon to midnight

**Tuesday, April 18**

**TELECOMMUNICATIONS:** "Using the VoiceMemo System Effectively" will be offered from 1:30-3:30 p.m. in the basement conference room of the Telecom Building. To register, call 882-2177.

**Wednesday, April 19**

**PHYSIOLOGY SEMINAR:** Olga Hudlicka of the University of Birmingham-United Kingdom, will present "Mechanisms of Angiogenesis Under Physiologic Conditions" at 2:40 p.m. in S261 Medical Sciences Building.

**TELECOMMUNICATIONS:** "Telephone Etiquette and the Effective Use of Phone/Voice Mail Features" will be offered from 1:30-3:30 p.m. in the basement conference room of the Telecom Building. To register, call 882-2177.

**WORK-STUDY STUDENT WORKSHOP:**

"Summer Jobs/Job Search Strategies" will be offered from 3:40-4:30 p.m. in 220 Noyes Hall. To register, call 884-6217.

**19TH ANNUAL PLANT BIOCHEMISTRY, PHYSIOLOGY AND MOLECULAR BIOLOGY SYMPOSIUM:**

"Will Plants Have a Role in Bioremediation?" will be presented April 19-22. For registration information, call Doug Randall at 882-7796.

**Thursday, April 20**

**WORK-STUDY STUDENT WORKSHOP:**

"Summer Jobs/Job Search Strategies" will be offered from 3:40-4:30 p.m. in 220 Noyes Hall. To register, call 884-6217.

**COMMUNICATIVE DISORDERS LECTURE:**

Elizabeth Bates of the University of California, San Diego, will present "The Nature of Language" at 3:40 p.m. in Room 7 Hulston Hall.

**Wednesday, April 26**

**PHYSIOLOGY SEMINAR:** Julie Rapps, graduate physiology student, will speak at 2:40 p.m. in M437 Medical Sciences Building. Refreshments will be served at 2:20 p.m. in M436A.

**MAY**

**Wednesday, May 3**

**PHYSIOLOGY SEMINAR:** Rolando Rumbaut, graduate physiology student, will speak at 2:40 p.m. in M437 Medical Sciences Building. Refreshments will be served at 2:20 p.m. in M436A.

**Tuesday, May 9**

**TELECOMMUNICATIONS:** "Using Telephone Features Effectively" will be offered from 1:30-3:30 p.m. in the basement conference room of the Telecom Building. To register, call 882-2177.

**Wednesday, May 10**

**PHYSIOLOGY SEMINAR:** Christopher Hardin, assistant professor of physiology, will present "13C-NMR Analysis of Carbohydrate Metabolism in Vascular Smooth Muscle" at 2:40 p.m. in M437 Medical Sciences Building. Refreshments will be served at 2:20 p.m. in M436A.

**Tuesday, May 16**

**TELECOMMUNICATIONS:** "Using the VoiceMemo System Effectively" will be offered from 1:30-3:30 p.m. in the basement conference room of the Telecom Building. To register, call 882-2177.

**Wednesday, May 17**

**TELECOMMUNICATIONS:** "Telephone Etiquette and the Effective Use of Phone/Voice Mail Features" will be offered from 1:30-3:30 p.m. in the basement conference room of the Telecom Building. To register, call 882-2177.

**Saturday, Feb. 4**

**HOPE (Help Others Sharing Personal Experience):** Group will meet from 9:30-11 a.m. on the first Saturday of each month in the ground floor dining room of Ellis Fischel Cancer Center. For more information, call 882-7373.

**Thursday, Feb. 9**

**STAFF COUNCIL:** Group will meet at 1:15 p.m. in S203 Memorial Union.  
**FACULTY COUNCIL:** Group will meet at 3:40 p.m. in S110 Memorial Union.

**Sunday, Feb. 12**

**NUVOICE:** Group will meet at 1 p.m. in the seventh-floor classroom of Ellis Fischel Cancer Center. For more information, call 882-7373.

**Thursday, Feb. 16**

**SHARE (Support Has A Reinforcing Effect):** Group will meet from 7-8:30 p.m. on the third Thursday of each month in the ground-floor dining room of Ellis Fischel Cancer Center. For more information, call 882-7373.

**Wednesday, Feb. 22**

**MISSOURI ARCHAEOLOGICAL SOCIETY:** Group will meet at 7:30 p.m. at the Museum Support Center on Rock Quarry Road. Carol Diaz-Granados will present "Missouri's Prehistoric Rock Art." For more information, call 882-3764.

**Thursday, Feb. 23**

**STAFF COUNCIL:** Group will meet at 1:15 p.m. in S203 Memorial Union.  
**FACULTY COUNCIL:** Group will meet at 3:40 p.m. in S110 Memorial Union.

**MARCH**

**Saturday, March 4**

**HOPE (Help Others Sharing Personal Experience):** Group will meet from 9:30-11 a.m. in the ground-floor dining room of Ellis Fischel Cancer Center. For more information, call 882-7373.

**Thursday, March 9**

**STAFF COUNCIL:** Group will meet at 1:15 p.m. in S203 Memorial Union.  
**FACULTY COUNCIL:** Group will meet at 3:40 p.m. in S110 Memorial Union.

**Sunday, March 12**

**NUVOICE:** Group will meet at 1 p.m. in the seventh-floor classroom of Ellis Fischel Cancer Center. For more information, call 882-7373.

**Thursday, March 16**

**SHARE (Support Has A Reinforcing Effect):** Group will meet from 7-8:30 p.m. in the ground-floor dining room of Ellis Fischel Cancer Center. For more information, call 882-7373.

**Thursday, March 23**

**STAFF COUNCIL:** Group will meet at 1:15 p.m. in S203 Memorial Union.

**Wednesday, March 29**

**MISSOURI ARCHAEOLOGICAL SOCIETY:** Group will meet at 7:30 p.m. at the Museum Support Center on Rock Quarry Road. Jim Duncan will present "The Majesty of the Osage." For more information, call 882-3764.

**Thursday, March 30**


**FACULTY COUNCIL:** Group will meet at 3:40 p.m. in S110 Memorial Union.

**Parking & Transportation Services**  
Turner Ave. Garage, Level 2  
882-4568

Dual parking permits are no longer honored in CG15. Persons going to Crowder Hall are asked to use WG3 and display their Dual permit. Persons going to University Hospital may use SG7 or SG4.

**SMART-BUILDING AUTOMATION SAVES MU ENERGY DOLLARS**

People are headed for classroom 5. I better start all systems.



"Smart Building Automation" is one of the cutting-edge energy technologies Campus Facilities-Energy Management is implementing at MU to improve comfort and save energy dollars. Thousands of computer control sensors, which adjust temperature and lighting controls to minimize energy use, are centrally monitored in MU's buildings. If anything goes wrong, operators are advised automatically and respond before you know. Energy savings more than pay for the investment in the systems. So far 30 percent of MU's buildings have the system, but we're working on making all of MU's buildings - "Smart Buildings."

**Campus Facilities**

**MEETINGS**

**JANUARY**

**Thursday, Jan. 26**  
**STAFF COUNCIL:** Group will meet at 1:15 p.m. in S203 Memorial Union.

**Tuesday, Jan. 31**  
**PEPL SUPPORT GROUP:** The support group for Parents Experiencing Perinatal Loss will meet from 7-9 p.m. in Room 1W19 University Hospital and Clinics. For more information, call 882-2221.

**FEBRUARY**

**Wednesday, Feb. 1**  
**PATIENT AND FAMILY SUPPORT GROUP:** Group will meet each Wednesday from 1-2 p.m. in the fourth floor lounge of Ellis Fischel Cancer Center. For more information, call 882-7373.

## APRIL

### Saturday, April 1

**HOPE** (Help Others Sharing Personal Experience): Group will meet from 9:30-11 a.m. in the ground-floor dining room of Ellis Fischel Cancer Center. For more information, call 882-7373.

### Sunday, April 9

**NUVOICE**: Group will meet at 1 p.m. in the seventh-floor classroom of Ellis Fischel Cancer Center. For more information, call 882-7373.

### Thursday, April 13

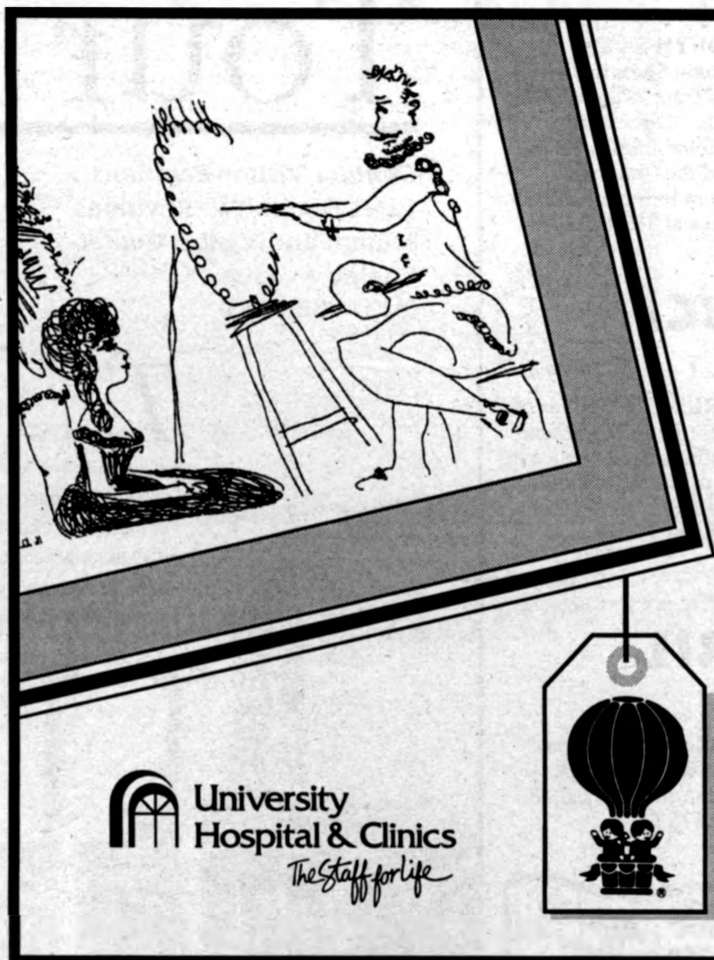
**STAFF COUNCIL**: Group will meet at 1:15 p.m. in S203 Memorial Union.  
**FACULTY COUNCIL**: Group will meet at 3:40 p.m. in S110 Memorial Union.

### Thursday, April 20

**SHARE** (Support Has A Reinforcing Effect): Group will meet from 7-8:30 p.m. in the ground-floor dining room of Ellis Fischel Cancer Center. For more information, call 882-7373.

### Thursday, April 27

**STAFF COUNCIL**: Group will meet at 1:15 p.m. in S203 Memorial Union.  
**FACULTY COUNCIL**: Group will meet at 3:40 p.m. in S110 Memorial Union.



# Art Auction

Exhibition — 6 p.m.

Auction — 7 p.m.

Saturday, Jan. 28

Columns Room

Donald W. Reynolds Alumni Center

University of Missouri-Columbia

9th Annual Art Exhibition and Auction is presented by Staff Council at University Hospital and Clinics.

\$1 donation per person to benefit Children's Miracle Network.

For more information, call 882-1008.

## MAY

### Saturday, May 6

**HOPE** (Help Others Sharing Personal Experience): Group will meet from 9:30-11 a.m. in the ground-floor dining room of Ellis Fischel Cancer Center. For more information, call 882-7373.

### Thursday, May 11

**STAFF COUNCIL**: Group will meet at 1:15 p.m. in S203 Memorial Union.

### Sunday, May 14

**NUVOICE**: Group will meet at 1 p.m. in the seventh-floor classroom of Ellis Fischel Cancer Center. For more information, call 882-7373.

### Thursday, May 18

**SHARE** (Support Has A Reinforcing Effect): Group will meet from 7-8:30 p.m. in the ground-floor dining room of Ellis Fischel Cancer Center. For more information, call 882-7373.

### Thursday, May 25

**STAFF COUNCIL**: Group will meet at 1:15 p.m. in S203 Memorial Union.

Public Library at 443-3161 or the Earth Day Coalition at 875-0539.  
**ART AUCTION**: The annual art auction for the Children's Miracle Network will be held at 7 p.m. in the Columns Room of the Reynolds Alumni and Visitor Center. For more information, call 882-1008.

### Monday, Jan. 30

**EARTH DAY PROGRAM SERIES**: "Energy: the Future is Now" will be presented by the Columbia Water and Light Department at 7 p.m. at the Columbia Public Library following a 6 p.m. exhibit hour. For more information, call the Columbia Public Library at 443-3161 or the Earth Day Coalition at 875-0539.  
**NUTRITION TALK**: University Hospital and Clinics will offer "Nutrition Talk" at 12:30 p.m. at the Health Information Center in Columbia Mall.

## FEBRUARY

### Wednesday, Feb. 1

**BLACK HISTORY MONTH COMMEMORATION**: "ShantyTown Revisited" will be held at 7 p.m. in Jesse Auditorium. For more information, call 882-2664.

### Thursday, Feb. 2

**BLACK HISTORY MONTH EVENT**: "Jazz Blues Night" will be held at 7 p.m. at Douglass School. For more information, call Bill Thompson or Wanna Elbert at 874-7460.

### Friday, Feb. 3

**BLACK HISTORY MONTH EVENT**: "Food Mart" will be held from 11 a.m.-2 p.m. in Brady Commons/Lowry Mall.

### Saturday, Feb. 4

**BLACK HISTORY MONTH EVENT**: African Music, Fashion Extravaganza will be held from 7-11 p.m. in Mark Twain Ballroom, Memorial Union. For more information, call Tabitha Madzula 882-0329.

## SPECIAL EVENTS

## JANUARY

### Saturday, Jan. 28

**EARTH DAY EVENT**: Earth Day Expo will be held from 10 a.m.-9 p.m. at Columbia Mall. For more information, call Columbia

**NEW** **Post-it™**  
Brand  
**NEON**  
**POP-UP NOTES**

Stk #0635N  
\$.58/Pad

Also available in YELLOW; Stk #0635A.

**Post-it™**  
Brand  
**POP-UP NOTE DISPENSER**

Stk #0635  
\$4.32 Each

**General Stores:**  
We've Got What You Need.

**882-6906**

**Friday, Feb. 10**

**BLACK HISTORY MONTH PANEL DISCUSSION:** "The Impact of Managed Care on Minority Physicians and the Underserved" will be held at 7 p.m. in Acuff Auditorium, MA 217 Medical Science Building.

**Saturday, Feb. 11**

**BLACK HISTORY MONTH EVENT:** Storytelling by Evester Roper will be held at 2:30 p.m. in the Friends Room of the Columbia Public Library.

**Wednesday, Feb. 15**

**BLACK HISTORY MONTH EVENT:** Blood pressure and cholesterol screenings will be offered from 2-4 p.m. at the Black Culture Center, 823 Virginia Avenue. Blood pressure screening is free, cholesterol screenings: \$7.

**Friday, Feb. 17**

**VIRTUAL REALITY GOLF:** "Can't Wait 'Fore' Spring" Indoor Golf Classic will be held Feb. 17-19. Cost: \$25 per person. For more information and to register, call 446-2847.

**Saturday, Feb. 18**

**BLACK HISTORY MONTH EVENT:** "Unveiling of the portrait of Lloyd Gaines" will be held at 11 a.m. in the Courtroom, Room 112 Hulston Hall School of Law.

**Sunday, Feb. 19**

**BLACK HISTORY MONTH EVENT:** "African-American Spirituality" will be held at 3 p.m. at Missouri United Methodist Church 204 S. Ninth Street. This event will feature the music of Harris Stowe College Choir of St. Louis, Legion of Black Collegians Choir (MU), the Unity Ministries Choir of Columbia, and a lecture by Theophus Smith, associate professor of religion at Emory University. For more information, call the Black Studies Office at 882-6229.

**Sunday, Feb. 26**

**ENGINEERS WEEK:** Will be held Feb. 26-March 4 in and around the College of Engineering. This annual observance, a tradition at Mizzou since 1903, will feature a road rally, professor-for-a-day, visits by business leaders, king and queen skits, a barbecue and a knighting ceremony. Most events are free. For more information, call Terry Jordan at 882-3221.

**BLACK HISTORY MONTH EVENT:** Soul Food Pot Luck Dinner and Gospel Explosion will be held at 3 p.m. at Douglass School. For more information, call the Black Studies Office at 882-6229.

**Tuesday, Feb. 28**

**BLACK HISTORY MONTH EVENT:** Wambi's African Fashion Show and Reception will be held from 3-5 p.m. in the Ellis Library colonnade. "Discovering Great Jazz" will be offered from 7-9 p.m. in the Friends Room of the Columbia Public Library. For more information, call the Black Studies Office at 882-6229.

**MARCH**

**Friday, March 3**

**ENGINEERING AWARDS:** The College of Engineering will present its 1995 Missouri Honor Awards for Distinguished Service in Engineering at 6:30 p.m. at the Reynolds Alumni and Visitor Center. Cost: \$18.50. For reservations, call Sally Schwartz at 882-4378.

**APRIL**

**Saturday, April 22**

**EARTH DAY FESTIVAL:** The Earth Day Festival and Street Fair will be held in Peace Park. For more information, call the Earth Day Coalition at 875-0539.



**JANUARY**

**Friday, Jan. 27**

**WOMEN'S GYMNASTICS:** Tigers meet Nebraska at 7 p.m. at the Hearnes Center.

**Sunday, Jan. 29**

**WRESTLING:** Tigers will grapple with Northern Iowa at 2:30 p.m. at the Hearnes Center.

**FEBRUARY**

**Friday, Feb. 3 and Saturday, Feb. 4**

**WOMEN'S GYMNASTICS:** Fifteenth Annual Cat Classic, 7 p.m. at the Hearnes Center.

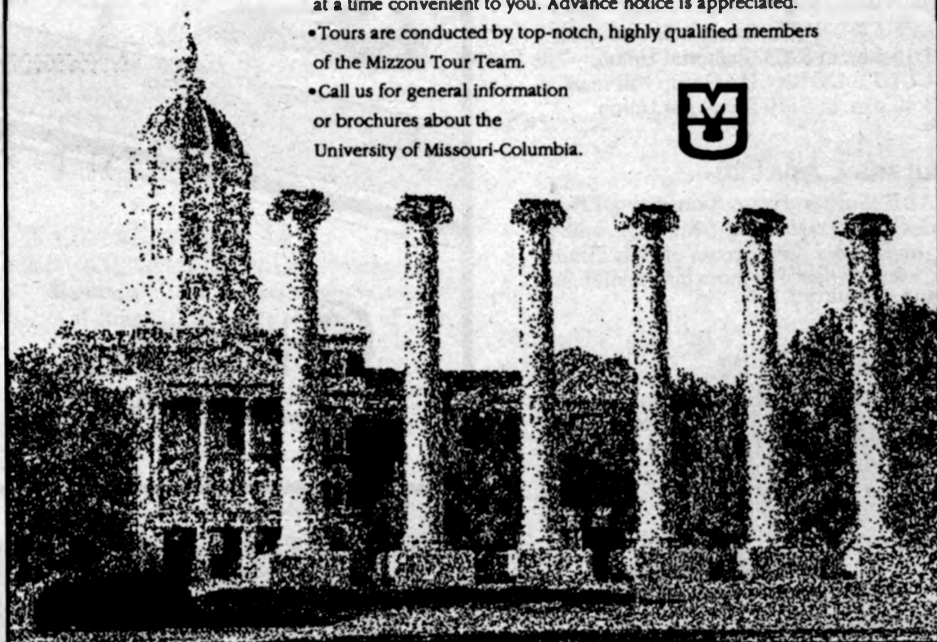
**Tour MU**

Contact Visitor Relations  
123H Donald W. Reynolds  
Alumni and Visitor Center  
Conley Avenue  
(314) 882-6333

Tours of the campus can be arranged Monday through Friday at a time convenient to you. Advance notice is appreciated.

•Tours are conducted by top-notch, highly qualified members of the Mizzou Tour Team.

•Call us for general information or brochures about the University of Missouri-Columbia.



**Saturday, Feb. 4**

**SWIMMING:** Tigers will meet Northeast Missouri at 1 p.m. at home.

**Wednesday, Feb. 8**

**MEN'S BASKETBALL:** Tigers meet Iowa State at home.

**Saturday, Feb. 11**

**SWIMMING:** Tigers will meet Iowa State at 1:30 p.m. at home.

**MEN'S BASKETBALL:** Tigers meet Oklahoma State at home.

**Wednesday, Feb. 15**

**WRESTLING:** Tigers will grapple with Nebraska at 7:30 p.m. at the Hearnes Center.

**Monday, Feb. 20**

**WOMEN'S GYMNASTICS:** Tigers meet Iowa State at 7 p.m., Hearnes Center.

**Wednesday, Feb. 22**

**MEN'S BASKETBALL:** Tigers meet Nebraska at home.

**Saturday, Feb. 25**

**SOFTBALL:** Tigers will play in the Mizzou Round-Robin Tournament Feb. 25-26.

**MARCH**

**Saturday, March 4**

**MEN'S BASKETBALL:** Tigers meet Oklahoma at home.

**Friday, March 10**

**MEN'S BASKETBALL:** Phillips 66 Big Eight Tournament begins in Kansas City.

**Sunday, March 12**

**WOMEN'S GYMNASTICS:** First Annual Corvette Cup begins at 2 p.m. at the Hearnes Center.

**Saturday, March 25**

**SOFTBALL:** Tigers will play in the Mizzou Invitational March 24-26.

**WOMEN'S GYMNASTICS:** Big Eight Championships, 7 p.m. at the Hearnes Center.

**Tuesday, March 28**

**SOFTBALL:** Tigers will play St. Louis University at 2 p.m. at home.

**APRIL**

**Tuesday, April 4**

**SOFTBALL:** Tigers will play UMKC at 3 p.m. at home.

**Saturday, April 8**

**SOFTBALL:** Tigers will play Iowa State at 1 p.m. at home.

**Sunday, April 9**

**SOFTBALL:** Tigers will play Iowa State at 11 a.m. at home.

**Tuesday, April 11**

**SOFTBALL:** Tigers will play Southwest Missouri State at 3 p.m. at home.

**Saturday, April 22**

**SOFTBALL:** Tigers will play Oklahoma at 1 p.m. at home.

**Sunday, April 23**

**SOFTBALL:** Tigers will play Oklahoma at 11 a.m. at home.

**BLAIR**  
**Oasis**  
**SUBWAY**

**10% OFF**

any item in Blair Oasis through the month of February when you show your

**Mizzou Staff I.D.**

Upper Level Blair Hall,  
Near Greektown

Open 7 days a week, NOON - MIDNIGHT

## KENNEDY PREPARES FOR WHAD'YA KNOW? GIG

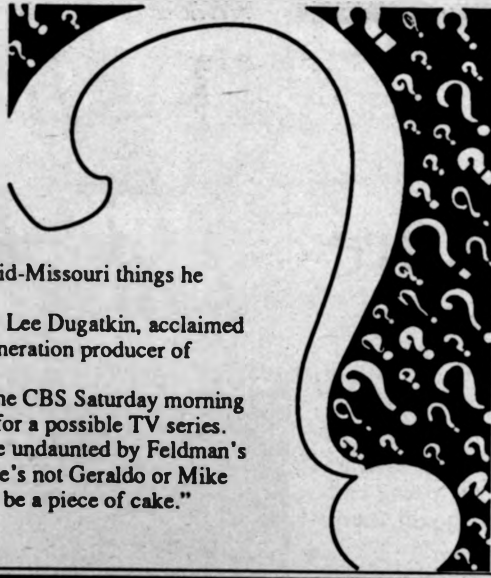
George Kennedy, associate professor of journalism and managing editor of the *Columbia Missourian*, will be one of Michael Feldman's guests Saturday morning when the live, nationwide radio show, *Whad'Ya Know?*, comes to Jesse Hall. The two-hour, comedy quiz show begins at 10 a.m. Tickets are sold out, but you can catch it on KBIA.

Kennedy says he's preparing "the way I usually do — trying to get someone else to do the work for me." In Tuesday's *Missourian*, he invited readers to phone in their suggestions for mid-Missouri things he might talk about.

Appearing with Kennedy will be assistant professor of biology Lee Dugatkin, acclaimed for his study of guppy mating habits, and Vince Gardner, third-generation producer of country hams.

The event will be filmed by Universal Belo, the producers of the CBS Saturday morning children's show *Beakman's World*, who will be shooting footage for a possible TV series.

Kennedy, not a habitual *Whad'Ya Know?* listener, claims to be undaunted by Feldman's penchant for acerbic humor, sometimes at his guest's expense. "He's not Geraldo or Mike Wallace. His producer has given me to understand this is going to be a piece of cake."



## THE BIG PICTURE FEATURED IN NATIONAL PUBLICATION

Chancellor Charles Kiesler's state-of-the-University report, *The Big Picture*, was highlighted in the December issue of the *Association of American Universities' Public Affairs Report*. Editor Peter Smith particularly noted the section dealing with MU's efforts to enhance undergraduate education and attached a copy of that portion of the report in his mailing to readers.

## CURATOR HORNE TO SPEAK DURING BLACK HISTORY MONTH

Malaika Horne, managing director of the Narcotics Service Council of St. Louis and member of the University of Missouri Board of Curators, will present "Drug Abuse and African-American Families" at 1 p.m., Wednesday, Feb. 1, in Memorial Union Auditorium. Her lecture is sponsored by the School of Social Work and the Department of Human Development and Family Studies in honor of Black History Month.

# Legislators predicted priority on prison funding

As a preface to the coming months of debate, committee meetings and floor votes, area legislators gathered with Chancellor Charles Kiesler on Jan. 14 for a panel discussion on the higher education issues that face the Missouri General Assembly.

Local lawmakers generally were upbeat about funding for Missouri's universities and colleges, but warned that a priority on building new state prisons could upstage higher education funding. That prediction held true, when Gov. Mel Carnahan last week recommended sharply higher spending for prisons and lower-than-expected increases for some other state agencies (see story on Page 1.)

Several legislators in the panel discussion noted that state revenue collections are up. Added to the financial equation are increased receipts from the state lottery and new revenues from a riverboat gambling industry that has surged in recent months after voters approved slot machines.

The panel was sponsored by the MU Alumni Association's legislative information network committee.

"My impression is it's going to be a pretty good year for higher education," said Sen. Joe Moseley, D-Columbia. But Moseley cautioned that there will be a "big pull" on the budget to provide more money for corrections priorities around the state.

"We're growing at a rate of five inmates a day in the corrections system and there's no place to put them," he said. "But for corrections, this would be an excellent year for higher education."

Rep. Gracia Backer, D-New Bloomfield, agreed that funding for prisons will be a hot topic in this session. "We're in a feeding frenzy on crime, but it's important that citizens understand that feeding frenzies cost money," Backer said. The high cost of building and maintaining prisons could mean "we have to remove some general revenue money from other programs, including higher education."

The first order of business in the Senate, Moseley said, is to authorize the \$250-million state bond issue that voters approved in August, including \$17.5 million for construction projects at MU.

Moseley, who chairs the Senate Education Committee, said that so far only a few higher education bills have been under discussion in the Capitol. One bill would allow student curators to sit in on closed sessions of the UM System Board of Curators and would provide for faculty representation to the board.

Rep. Ted Farnen, a freshman Democrat from Mexico, said he's concerned by recent discussions at the Coordinating Board for Higher Education to expand the statewide missions for Missouri's regional universities. That expansion could cost the higher education budget millions of dollars. The



Chancellor Charles Kiesler, left, State Rep. Tim Harlan and State Rep. Ken Jacob participated in a recent panel discussion on higher education issues facing the Missouri Legislature.

L.G. Patterson photo

Legislature may take up the discussion this session, Farnen said.

"I'm just concerned we don't slice up the higher education pie too much. This could turn into an opportunity to send more money to these other schools," he said. "We normally have a limited number of dollars, and I'd like to see MU and the UM System get its fair share." Farnen also said he would work to ensure funding to maintain University buildings. "It's not a sexy issue, but it is an important issue," he said.

Rep. Ken Jacob, D-Columbia, predicted an "interesting" legislative session. "It's difficult to predict how we will work together as a group," Jacob said. "Clearly, the Legislature is more conservative than it has been in the past."

After six years as chairman of the House Higher Education Committee, Jacob said he relishes his new assignment as chairman of the House Ways and Means Committee. "This is the committee that deals with new sources of revenue. I hope whatever new money does come along we can direct it to higher education," Jacob said.

"There just isn't a lot of money up there

for higher education," he said. "I don't see any big pots of gold. And I don't think it's possible to pass any more big tax bills for a long time to come."

"I think higher education will do well in Jefferson City in terms of the budget, but we have to show that we're good stewards of that money," said Jim Snider, lobbyist for the UM System. The University recently refinanced much of its long-term debt at lower interest rates. During the process, the UM System received the highest bond rating of any higher education institution in the country, Snider said. "That is the type of thing that will translate in Jefferson City."

Area lawmakers also discussed MU's image in the state Capitol. Several members of the local delegation said recent positive news, such as increased minority enrollment and a record number of applications, makes their jobs easier.

MU has proven itself as a resource for the Legislature and state government, Moseley said. As a freshman senator, "I was given credibility just because of who I represented. The University has positioned itself well as a resource to the state."

However, Moseley also said that he's heard questions from some legislators about whether the crush of new applications to the state's flagship university may keep some Missouri students from attending MU.

Rep. Tim Harlan, a Democrat from Columbia who was elected last November, added a word of caution about the image of higher education in the Legislature. "You need to understand, from the House side there are 163 people down there with totally different ideas," Harlan said. Not everyone understands why a university like MU spends money on research, he said. The message many legislators receive from their constituents is that government spends too much money. "They already know you spend too much money because their taxes are too high," Harlan said.

Jacob stressed that legislators are paying attention to the good news coming out of MU. For instance, members of the black caucus have made positive comments about the big increases in minority enrollment at Mizzou, he said. "That has really brought a group of people over who haven't always been there."

# Anesthesiologist develops way to measure pain in infants

Because they can't tell anyone how much they hurt, newborn infants who undergo surgery often suffer more postoperative pain than older children and adults. Doctors and nurses may make only an educated guess about how much pain-relief medication is needed, and research has shown that they frequently administer these drugs too conservatively.

Health professionals now have a simple new tool at their disposal to assess pain in infants: the CRIES scale. Susan Krechel, associate professor of anesthesiology, developed the scale to help caregivers keep postoperative pain to a minimum while not overmedicating. An article introducing CRIES and detailing Krechel's research appeared in the January issue of the journal *Paediatric Anaesthesia*.

"The main advantage of CRIES is it's so easy to use and so easy to remember," Krechel says.

Each letter in the scale represents a behavioral or physiological indicator of pain. The letters stand for:

- Crying - newborns in pain have a high-pitched, characteristic cry and may be inconsolable.
- Requires oxygen - a baby in pain has less oxygen saturation in its blood.
- Increased vital signs - pain elevates the heart rate and blood pressure.
- Expression - a grimace and furrowed brow, for example, indicate pain.
- Sleep - infants in pain wake at frequent intervals or may be unable to sleep.

The baby's pain is measured on a cumulative scale of 0 to 10, with each indicator rated at 0, 1 or 2. A score of 4 indicates the need for medication. The scale takes only 20 seconds to administer.

As recently as the early 1980s, few infants received general anesthesia before undergoing surgery. The common wisdom was the babies' nervous systems weren't developed enough to feel pain. In the eyes of many physicians, putting their young patients under general anesthesia didn't justify its risks.

Research has since shown that neonates have the same number of pain nerve endings per square inch of skin as adults. In fact, a fetus at 20 weeks already has developed most of the pain perception ability it will ever have. In the mid-1980s several medical

organizations issued policy statements acknowledging that infants and young children can experience pain and should receive appropriate relief.

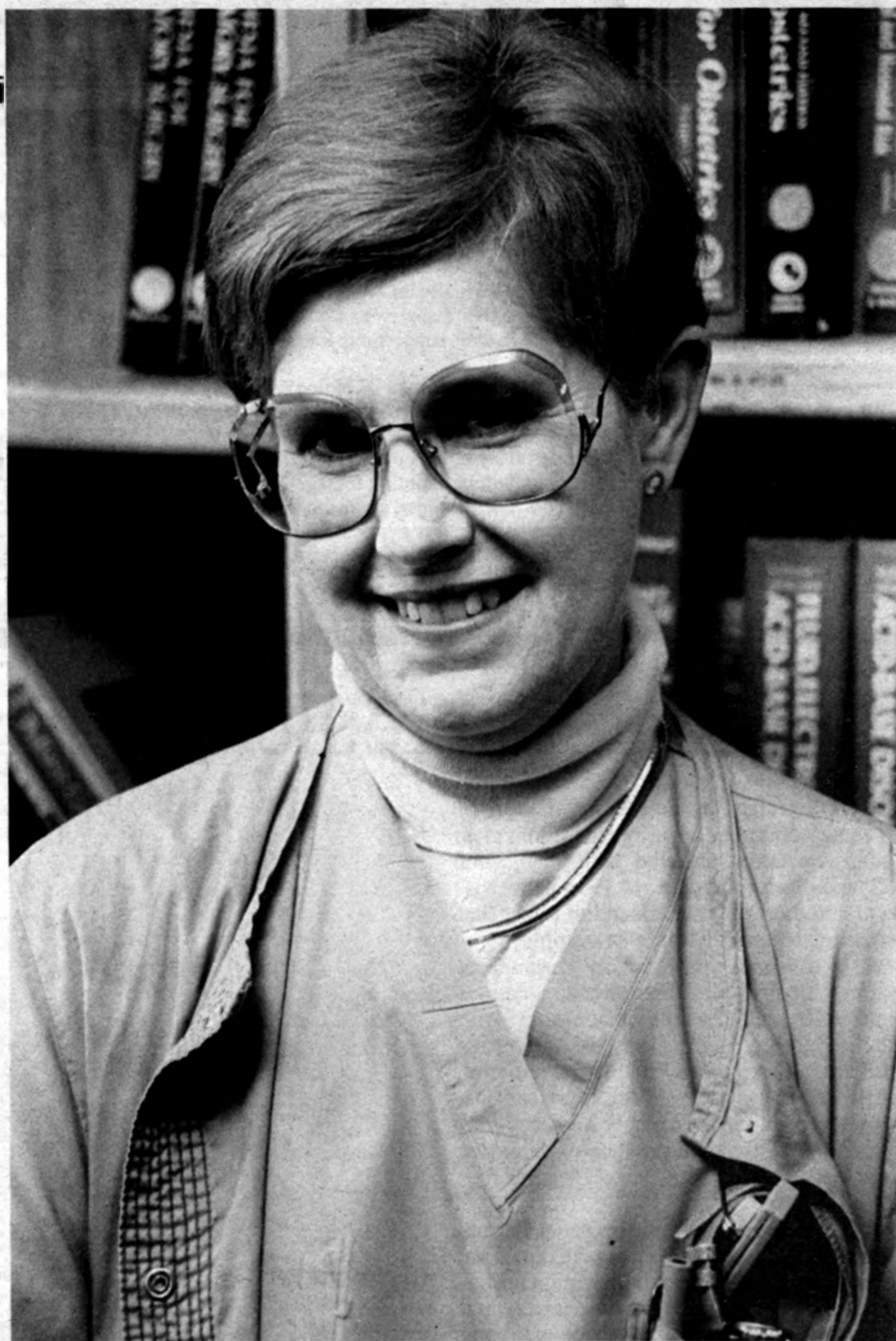
Several other scales have been developed to assess postoperative infant pain, but Krechel said that they don't provide the right combination of measures for neonates. In some scales, categories of measurement are not distinct enough, she said. For example, the Objective Pain Scale, or OPS, measures crying, blood pressure and three aspects that are only subtly different: moving, agitation and body language. Other scores are either too complex or are based totally on observations, not taking into account physiological factors such as heart rate.

CRIES goes beyond those to include an additional but easy-to-measure factor — oxygenation. The "R - requires oxygen" component attempts to distinguish level of pain on the basis of how much oxygen is required to maintain oxygen saturation in the blood at 95 percent. The levels of oxygen are measured with a pulse oximeter, a small, noninvasive device taped to the baby's finger that bounces wavelengths of light off hemoglobin in the blood.

Krechel and co-author Judy Bildner, a clinical nurse specialist at the MU Health Sciences Center, tested the scale on 24 postoperative patients. The babies ranged from infants born prematurely at 32 weeks' gestation to full-term neonates who were 20 weeks of age. Using nurses' evaluations as a control, the researchers compared CRIES with the OPS, an easy-to-use scale that was designed for use in older children who can't yet talk. The nurses administered the three measures when the babies first awakened in the recovery room and then at least hourly thereafter for up to three days. They gave pain medication when either scale indicated an infant was hurting.

The team judged its success on the level at which scores decreased following the administration of analgesia. CRIES was found to be as good or better than OPS in assessing pain. In addition, the nurses participating in the study preferred CRIES 3-to-1 over OPS.

No scale may ever provide a perfect means of measuring infant pain, Krechel says, but CRIES comes the closest of those that have



Associate Professor of anesthesiology Susan Krechel has drawn national attention for developing a scale that measures pain in newborns.

University Hospitals and Clinics photo

been developed. While all pain is stressful, she says, not all stress — such as the distress caused by hunger or fatigue — is painful. While CRIES is most effective in assessing post-surgical pain, different techniques are used to measure other kinds of pain, including the pain associated with acute procedures.

Krechel also is pioneering the use of intrathecal morphine to relieve post-operative pain in children. Although ITM is an accepted means of pain relief in adults, few hospitals use the technique extensively with children. ITM involves injecting a small amount of morphine into the spinal fluid. The morphine bathes the pain receptors located on the spinal cord so pain relief lasts longer and has a more profound effect. One

injection usually lasts 18 to 24 hours in children and 24 to 30 hours in neonates. Many of these patients require no further pain control, Krechel says.

And ITM, like CRIES, is easy to use. "It's very simple," she says. "You don't need catheters and machines to inject drugs for a long period of time."

Word is getting out about Krechel's innovations. "I've had calls from people all across the country who are anxious to use CRIES in their neonate units," she says. "I think the ITM will be accepted. Inasmuch as I've trained resident physicians, it's going out into the country now. They're taking it out and using it."

# MIZZOU

WEEKLY

Publications and Alumni Communication  
407 Reynolds Alumni and Visitor Center  
Columbia, MO 65211

University Libraries  
University of Missouri

### Digitization Information Page

Local identifier                      MizzouWeekly(print)

### Source information

Format                                      Newspaper  
Content type                              Text with images  
Source ID                                 Duplicate copies University Archives weeded out  
Notes

### Capture information

Date captured                            July-December, 2022  
Scanner manufacturer                 Plustek OpticBook  
Scanner model                            A300 Plus  
Scanning system software            Book Pavilion  
Optical resolution                      600 dpi  
Color settings                            8 bit grayscale for majority of pages;  
    24 bit color for color illustrations/portraits/photographs  
File types                                 tiff  
Notes

### Derivatives - Access copy

Compression                            Tiff: LZW compression  
Editing software                        Adobe Photoshop 2022  
Resolution                                600 dpi  
Color                                        same as captured  
File types                                 pdf created from tiffs  
Notes                                        Images cropped, straightened, and brightened.