

## Plans for Poultry Buildings

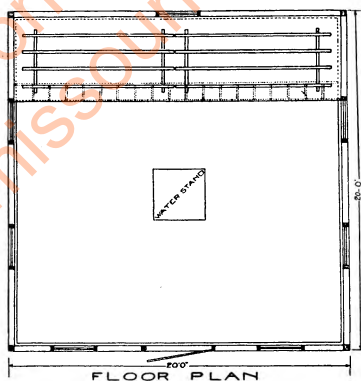
J. C. WOOLEY AND R. L. RICKETTS

Plan No. 7-727-C1 20'x20' Missouri (100 to 125 hens) - 25¢

(See Extension Circular 334 for description)



(Perspective)

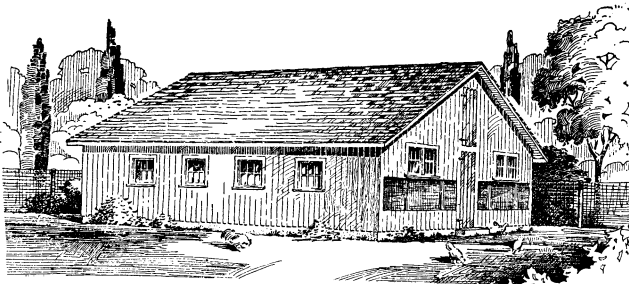


(Floor Plan)

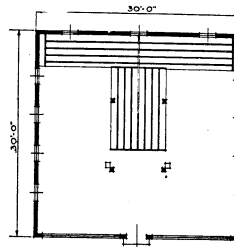
The Missouri type house provides a straw loft for insulation and to aid in the control of humidity. The open front provides for ventilation and permits the entrance of direct sunshine on the floor. Windows are placed on all four sides to provide distribution of light on the floor. Summer ventilation is improved by opening all windows.

Plan No. 3-727-C1 26'x26' Missouri (190 to 215 hens) - 25¢  
(Not illustrated)

Plan No. 6-727-C1 30'x30' Missouri (250 to 275 hens) - 25¢  
 (See Extension Circular 232 for description)

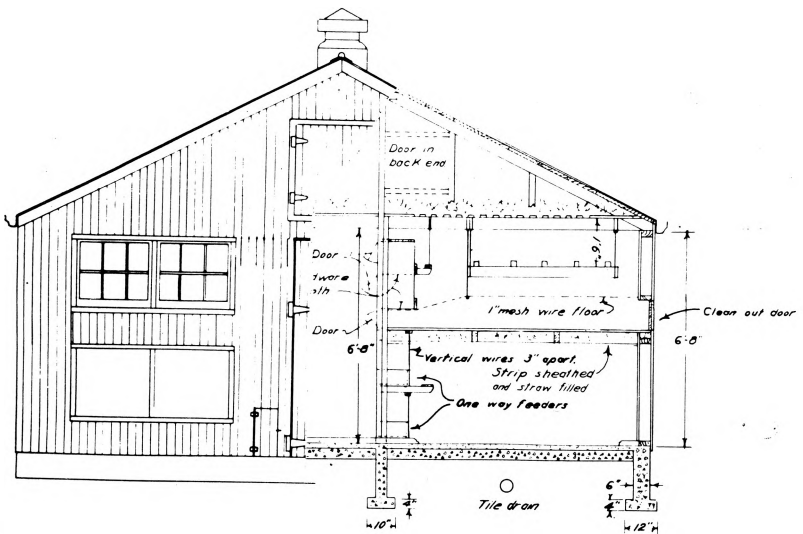


(Perspective)



(Floor Plan)

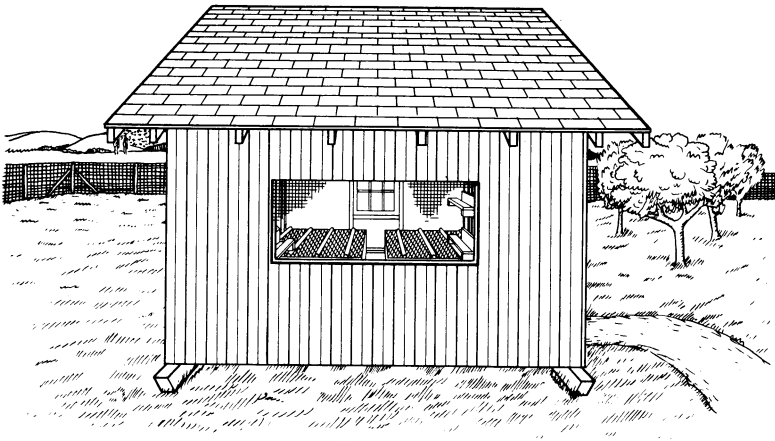
Plan No. 12-727-C2 20'x20' Double Deck Poultry House - 40¢  
 (End sectional view)



This house is similar to the 20'x20' Missouri type except for the two floors, two sets of windows and the ventilation system. The second floor is 3'6" above the first floor. The nests and roosts are placed upstairs with the feed and water down. The feeders and waterers can be served from the central hall. Cleaning is done through doors for the purpose—the work being done from the outside.

The lower deck has open front ventilation and the upper deck is ventilated through the straw loft and ventilated attic. This house accommodates 150 to 200 hens.

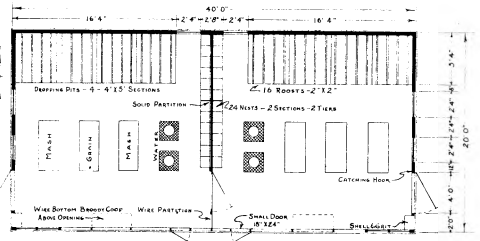
Plan No. 15-727-C1 30 Hen Laying House



(Perspective)

The house is for the farmer who keeps a small flock to produce eggs for home use only.

Plan No. 13-727-C2 East and West Type of Straw Loft Poultry House - 40¢

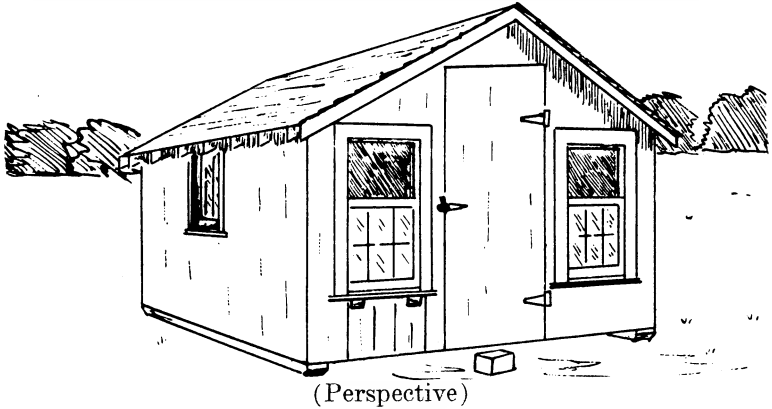


In this plan the ridge of the gable roof extends from east to west enabling the length to be varied to suit the size of flock. The open front and the straw loft is the same as for the regular Missouri type house. Extension Circular 429 describes this house.

Plan No. 8-727-C1 Missouri Brooder House—Sectional Type - 25¢

This is the regular Missouri brooder house constructed so that it can be dismantled for moving from one farm to another.

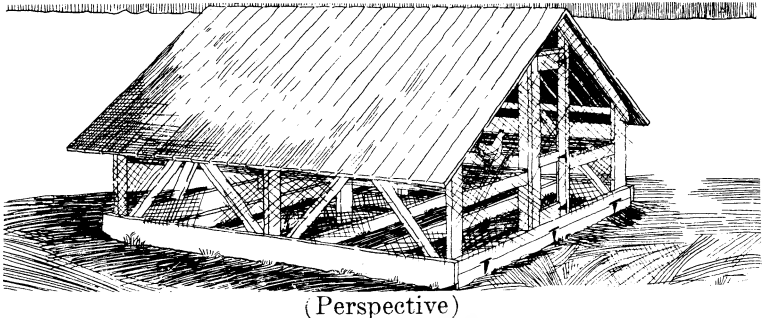
## Plan No. 9-727-C1 Missouri Type Brooder House - 25¢



Size 10'x12'. Provides space for 350 to 400 chicks. Skids and sills should be treated with a preservative to secure best service. Extension Circular 239 gives further description. By installing roosts and nests it can be used as a laying house for 30 hens.

## Plan No. 10-727-A1 Sun Porch for Brooder House - 10¢

By adding this sun porch to the regular brooder house, chicks are given more room and are also given access to sunshine and fresh air.

Plan No. 14-727-C1 Summer Range Shelter - 25¢  
(Midwest Plan 77771)

The range shelter permits moving the chicks from the brooder house to clean ground and green feed. It protects them from predatory animals and weather.

For homemade equipment see Missouri Extension Circular 419.

## Digitization Information Page

Local identifier EC473-1942

### Source information

Format Book  
Content type Text with images  
Source ID  
Notes Page numbering starts from 42

### Capture information

Date captured 2/27/2024  
Scanner manufacturer Fujitsu  
Scanner model fi-7460  
Scanning system software ScandAll Pro v. 2.1.5 Premium  
Optical resolution 600 dpi  
Color settings 8 bit grayscale  
File types tiff  
Notes Page numbers on physical material don't match file name numbering.

### Derivatives - Access copy

Compression Tiff: LZW compression  
Editing software Adobe Photoshop  
Resolution 600 dpi  
Color grayscale  
File types tiff  
Notes Images cropped, straightened, brightened.