



Published by the University of Missouri-Columbia
Extension Division
College of Home Economics

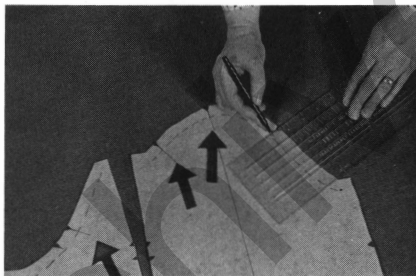
Sleeve Cap Alteration

Velda Rankin, State Clothing & Textiles Specialist
Janet Delcour, Area Clothing & Textiles Specialist
Doris Koelling, Consultant

1

Sleeves with excess fullness in the sleeve cap wrinkle and are difficult to set in when more than $\frac{1}{2}$ inch ease occurs between notches. Alterations for this problem should be made following fitting of the muslin.

2



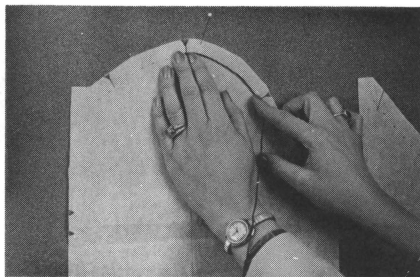
Draw a line through each notch from the cutting line to the seam line on sleeve.

3



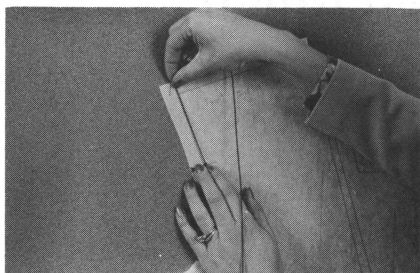
Draw a line through each notch from the cutting line to seam line on the back and front waist pattern pieces.

4



Measure the seam line from back sleeve notch to shoulder notch and from the shoulder notch to front notch on the sleeve. Record measurements.

5



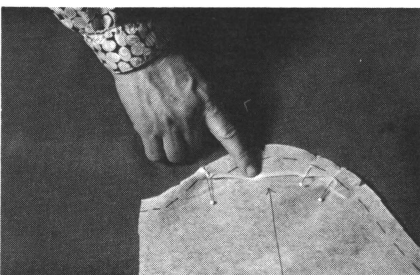
Measure the seam line from front notch on armhole to shoulder and from shoulder to the back notch on front and back waists. Record measurements.

6



Compare the sleeve back measurement to bodice back armhole measurement. Repeat on front pattern pieces. Remove fullness in excess of $\frac{1}{4}$ inch in the sleeve cap on each side of sleeve in notch area by taking small darts in the pattern.

7



Flatten pattern by smoothing excess fullness in center sleeve into a small fold connecting with the side folds.

This guide is part of a series on clothing construction. For others in the series see Home Economics guides 410-422.

■ Issued in furtherance of Cooperative Extension Work Acts of May 8 and June 30, 1914 in cooperation with the United States Department of Agriculture. Leonard C. Douglas, Director, Cooperative Extension Service, University of Missouri and Lincoln University, Columbia, Missouri 65211. ■ An equal opportunity institution.

File: Clothing and Textiles