

MIZZOU WEEKLY

The University of Missouri - Columbia

December 11, 1981

Happy Holidays!

Inside -

Credit Union offers retirement plan
Page 4

Staff Council election results
Page 5

Next Mizzou Weekly:
Jan. 22

University again surpasses its United Way campaign goal

Tuesday was a time for celebration. According to the Final Campaign Report submitted Tuesday, the University once again surpassed its United Way campaign goal this year, collecting a record \$126,595 to top its goal of \$125,564 by 101 percent.

"This shows how committed the University faculty and staff are to the well being of others in the community," Chancellor Uehling said at the Campaign Awards Ceremony. "It says to our friends and neighbors that despite our own budget situation, we care."

Associate Chairwoman Sharon Yoder said that special thanks should go to the regional chairpersons who worked to ensure that goals were met in their areas.

According to the Final Campaign Report, those regional chairpersons and their totals are:

Academic Region I under William Bradshaw, \$36,980.22 toward a goal of \$35,543, or 104 percent of goal;

Academic Region II under Ken

Larson, \$36,762.08 toward a goal of \$37,523 or 98 percent of goal;

Administrative Region under Ria Frijters, \$18,119.12 toward goal of \$18,965, or 95 percent of goal;

University Hospital and Clinics under Dan Mueller, \$11,285.48 toward a goal of \$9,867, or 114 percent of goal;

Central Administration under James Buchholz, \$13,580.92 toward a goal of \$14,378 or 94 percent of goal; and

Retirees Region under Herbert Schooling, \$9,487 toward a goal of \$9,277, or 102 percent of goal.

At the ceremony, regional, district, unit and special awards were presented to those areas achieving outstanding contributions or participation.

Two regions were honored: the University Hospital and Clinics, for achieving the highest percentage increase in dollars over the 1980 campaign, 114 percent; and the Administrative Region, for achieving the highest percentage participation, with 38 percent of the staff making contributions. This year, a plaque will

be hung in Jesse Hall lobby to honor the regional award winners.

Five district awards were presented: to the School of Journalism for being the largest district with the highest percentage participation, 60 percent; to the College of Home Economics for

achieving the highest percentage increase in dollars over the 1980 campaign, 161 percent; and to the offices of Physical Facilities Management, UMca Academic Affairs, and University Relations Division, for
(continued on page 5)

Committee proposes zone parking trial

Zone parking in UMC's 82 faculty and staff parking lots may be given a trial run sometime next semester as a result of a tentative proposal formed last Thursday by the Campus Parking Committee.

Under the proposal, all 18 of the WC (white campus) faculty and staff lots will be designated as one zone. Any person with a WC sticker will be allowed to park in any lot in the zone. The WC lots are located north of Rollins St., east of Missouri Ave. and Ninth St. and west of College Ave.

The trial period will enable the Parking Operations Office to determine

if zone parking will alleviate over-assignment problems occurring in many lots. Persons unable to park in their assigned lot because it is full will be able to park in another WC lot without receiving a parking ticket.

"The larger the zone area," says Jim Joy, director of parking operations, "the greater chance there is to resolve the over-assignment problem, because as we increase the number of spaces involved, we also increase the flexibility of parking in the area."

"We are looking at the white campus parking for the trial run because it is
(continued on page 7)

Modern astronomers continue pursuit of biblical wise men's vision

"There came three wise men from the East to Jerusalem, saying, 'Where is he that is born King of the Jews? For we have seen his star in the East and are come to worship him.'"

The Gospel According to St. Matthew

This passage from St. Matthew is well known, but what exactly was the Star of Bethlehem? Modern astronomers can only theorize about what the biblical wise men saw.

Charles Peterson, UMC professor of astronomy, says either the nova theory or the planetary conjunction theory are most often cited as possible explanations. Both involve some guesswork, says Peterson.

"It's hard to be specific," Peterson says. "We don't know the precise date of Christ's birth and it's not clear from biblical references what the true astronomical observation was."

In 4 B.C. there was an exceptionally bright nova in the constellation of Aquila. This is known from ancient Chinese records and the existence today of nova remnants in the direction of Aquila. A star during its nova stage may flare up to 10 million times its normal brightness, and for a few months or years be the brightest

star in the sky.

Another possibility, says Peterson, is that the biblical star was a major alignment of planets. These are fairly common, as astronomical events go, happening every several hundred years. The major alignment of Jupiter, Saturn and Venus, in 7 B.C. would have had special significance for the wise men of the east, says Peterson. The alignment occurred between the constellations of Virgo, the virgin, and Leo, the king. Judaic prophecy specifically speaks of the virgin birth of the King of the Jews.

"A third theory," says Peterson, "is much more sophisticated." It is accounted for by the fact that "wise men" was nearly synonymous with astronomer in biblical times.

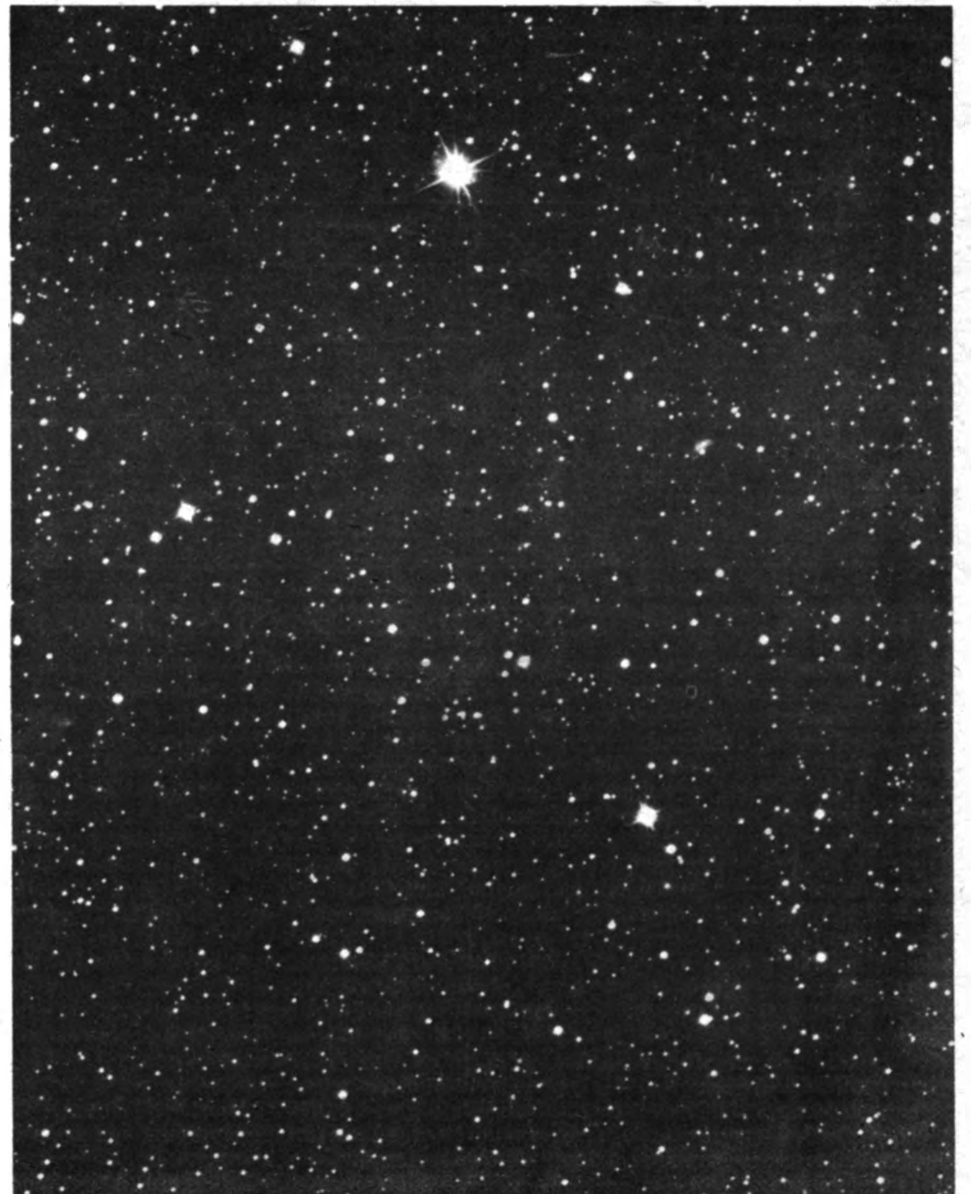
The theory suggests that the star marking the time of the winter equinox (when days and nights are equal) would have been Spica, in Virgo. A thousand years earlier, when the Babylonians first worked out the houses of the zodiac, the equinox would have been in Libra. But because of the Earth's wobbling about its axis, the position of the equinox had shifted.

By the time of Christ, the ancient astronomer would have marked the beginning of the winter equinox with Spica, the brightest star in Virgo.

Which was it? A nova, or a conjunction of planets, or a shift in the houses of the zodiac which would have only had meaning for an ancient astronomer?

"We just don't know for sure," says Peterson. "What one believes is a matter of individual choice."

—Robert Burns
News Services



What was the Star of Bethlehem? A nova, planetary conjunction, or shift in the houses of the zodiac?

Holiday Book Sale

The University of Missouri Press is holding a Holiday Book Sale for faculty, staff and students from 9:30 a.m. to 4:30 p.m. Tuesday, Dec. 15 in the north Memorial Union Ballroom.

All books published by the University Press will be sold at a 30 percent discount; poetry and fiction will be sold for \$1 per book. Free hot cider will be available; individuals can bring their own bags and finish their holiday shopping in one step.

Around the campus

WHEN THINKING OF HOLIDAY GIVING, GIVE BLOOD—The American Red Cross is issuing an urgent appeal to University faculty and staff to donate blood during the holiday season, particularly between Dec. 15 and Jan. 15, when the need for blood runs the highest, and donors, busy with holiday preparations, are least likely to think of giving blood.

Donors with type "O" and type "B" blood are especially needed, according to Medical Director Frank Ellis.

The Mid-Missouri Red Cross Blood Center is located at 1511 South Providence Road; hours are Monday, noon to 6 p.m.; Tuesday through Thursday, noon to 5 p.m.; and Friday, 10 a.m. to 4 p.m.

MEDICAL, DENTAL OPEN ENROLLMENT PERIOD TO END—The open enrollment period for medical insurance and the new dental insurance closes Dec. 31. UMC employees who work at least three-quarter time may join the programs without having to furnish evidence of good health during this period. For more information, contact Leroy Sharp, supervisor of UMC Staff Benefits, at 882-3683, or Michael Reese, director of UMca Employee Benefits, at 882-6267.

ADDRESS CHANGES DUE NOW; REVISED W-4s IN

JANUARY—Employees should now have turned in the address to which their W-2 forms will be mailed by the Payroll Office. Individuals who changed their addresses during the past year and have not already notified the office should complete a Form 282 and send it to the Payroll Office.

Individuals who had a spouse, child or other dependent die during 1981, or no longer support a dependent for whom a tax allowance was reported for in 1981, or believe a dependent claimed as an allowance in 1981 will have an income of at least \$1,000 during 1982, or have had any other change in the number of withholding allowances for estimated itemized deductions are required to file a revised W-4 form with the Payroll Office by Jan. 1.

HOLIDAY BLUES? The Christmas season at UMC is a time when spirits are high with anticipation of the holidays, but for many it involves depression and anxiety, according to James Irvin, director of UMC Counseling Services.

Irvin says that in addition this holiday season, the recent issue of the budget cuts have left some faculty and staff anxious.

"University Counseling Services would like the University faculty and staff to be aware of the hidden side of

the holidays," Irvin says. "Coping with personal conflict can be lonely and difficult, but Counseling Services has help to offer."

Counseling services hours are 8 a.m. to 5 p.m.; they can be reached at 882-6601.

WINTER SEMESTER CALENDAR COMING—Mizzou Weekly will not be published again until Friday, Jan. 22, 1982. However, the staff will be compiling the Winter Semester calendar. Anyone who would like events listed should call Mizzou Weekly at 882-6004 or write us at 606 Maryland Ave.

ALUMNI ASSOCIATION OFFERS TANGERINE BOWL TRAVEL PACKAGES—The UMC Alumni Association will provide a Tangerine Bowl special travel plan for UMC alumni, fans and friends interested in following the Missouri Tigers to the Tangerine Bowl in Orlando, Florida on Dec. 18-20. The travel plan consists of two packages ranging in price from \$60 to \$380, and includes activities such as a welcome reception/pep rally, reserved seat tickets, transportation to and from the stadium, two nights' lodging and a game souvenir.

For further information contact the UMC Alumni Association at 882-6611. The deadline for all reservations and full payment of either package is Wednesday, Dec. 9.

CAR POOL NEEDED FROM CENTRALIA—Carol Gebhardt in the cashier's office would like to join a car pool from Centralia to the University, arriving each day about 7:45 a.m. and leaving about 4:45 p.m. Interested persons can call her at 882-6645.

FLOATING HOLIDAYS—Dec. 24, the Thursday before Christmas, and Dec. 31, the Thursday before New Year's Day, have been designated as the "floating" holidays for this year.

The Thursday holidays allow faculty and staff to enjoy two four-day weekends.

THE UNIVERSITY CHAPTER OF THE PROFESSIONAL SECRETARIES ASSOCIATION will hold its monthly meeting Tuesday, Dec. 15 in N-208 Memorial Union. This will be a Christmas party with no business meeting. There will be a charge of \$3.75 per person. Contact Rosemary Crane at 882-3625 for more information and reservations.

DEADLINE APPROACHES FOR DEVELOPMENT PROGRAM PROPOSALS

Faculty members still have until 5 p.m. Monday, Dec. 14, to submit proposals for development

projects that will begin prior to May 1, 1982.

The Faculty Development Program, which began last summer, has received \$120,000 to continue this school year. All instructors through professors appointed to full-time positions during 1982-83 are eligible to apply.

A faculty committee, appointed by the provost, will advise him in the evaluation and selection of the applicants. Results of the selection process should be known by Dec. 30.

Faculty may obtain program information and a proposed budget form from their department chairman or dean, or by contacting Larry Clark, associate provost, at 882-7865.

PROVOST BUNN ANNOUNCED LAST WEEK A LIBERALIZATION OF THE PAYBACK SCHEDULE for schools and colleges borrowing money from the provost's office in order to ease the budget reductions necessary to fund mid-year raises.

Schools and colleges may borrow from a \$250,000 Special Equipment Fund to reduce their reallocations this year to fund raises for faculty and staff. Originally, Bunn had said that the funds had to be paid back to his office by the fall of 1982.

Last week, he extended that time limit to three years.

In addition to the \$250,000 Special Equipment Fund, the provost is also making an additional \$250,000 fund available to schools and colleges to supplement merit increases for faculty.

CHRISTMAS TREES ON SALE NOW—The UMC Forestry Club Annual Christmas Tree Sale will be held from 9 a.m. to 8 p.m. daily, or until sold out, through Sunday, Dec. 13, under the east side stands of the Memorial Stadium. Please enter the area between Hearnese and Memorial Stadium from Stadium Boulevard.

Locally grown Scotch pine trees, plain and decorated wreaths, boughs, holly, cones and mistletoe will be available for holiday decorating. Trees are priced by size and quality. For more information call 882-7045.

JOURNALISM OFFICES MOVED AFTER RENOVATION—The oldest building in the School of Journalism complex is getting a facelift. Neff Hall, which houses the administrative offices, Neff Auditorium and the student lounge, is being renovated with gifts to the school earmarked for the remodeling. This is the first major renovation effort since the building was given to the University in 1920.

The first phase of the remodeling has been completed and several administrative offices have been moved. The main office of the Dean's Office has been moved to 108-109 Neff. Dean Fisher, Dean Gross and Bettie Koelling are in 109 Neff; Mary Frances

Potter, journalism fiscal officer in 106 Neff; faculty mail boxes in 108 Neff and the Placement Office in 100 Neff.

THE REGISTRAR'S OFFICE has sent information on a new registration option to students pre-registering for Winter semester.

A new add/drop day—Thursday, Jan. 14 from 8 a.m. until 11:30 a.m.—will now allow students to change their schedules before the semester begins.

The period allows pre-enrolled students preferential treatment in changing their schedules before the first day of classes.

New student orientation and registration will be Thursday, Jan. 14, beginning at 1 p.m.

Registration will be 1 to 5 p.m., Thursday Jan. 14, and 8 a.m. to 5 p.m., Friday, Jan. 15.

Easy Access Enrollment, which allows University staff to take courses for credit without being enrolled in a degree program, will be 8 a.m. to 5 p.m., Saturday, Jan. 16.

The Educational Assistance Program allows full-time, permanent employees to register for up to six credit hours each semester at only 25 percent of the normal incidental fee.

All employees planning to take classes under this program during the winter semester should return UM Form UW 84 to the personnel office as soon as possible in order to avoid the rush during January.

Winter semester classwork begins at 7:40 a.m., Monday, Jan. 18.

THE DEPARTMENT OF PHARMACOLOGY HAS CHANGED TELEPHONE SYSTEMS, resulting in an addition of private lines for each individual faculty member and his or her laboratory. If someone needs to reach faculty and cannot reach them in their offices or laboratories, the caller may call the Pharmacology Office main number, 882-7186. The new numbers are as follows:

Byington, Keith H. 882-1563; Bylund, David B. 882-1560; Bylund's Laboratory 882-1547; Csaky, T.Z. 882-1596; Forte, Leonard R. 882-1565;

Forte's Laboratory 882-1538; Harris, R. Adron 882-1522; Harris' Laboratory 882-1523; Hewitt, William 882-7653; Morgan, Douglas 882-1539; Russell, Robert 882-1521;

Schroeder, Friedhelm 882-1546; Schroeder's Laboratory 882-1554; St. Omer, Vincent 882-8255; Thomas, Mary L. 882-1537; Walkenbach, Ronald J. 443-1471; Wosilait, Walter D. 882-1564; Wosilait's Laboratory 882-1555.

SEVERAL CASES OF MISUSE OF UMC'S WIDE AREA TELEPHONE SERVICE (WATS BOX) are being prosecuted by the Boone County Prosecutor's Office.

Six cases have been referred to the prosecutor. The University has received restitution in four cases with defendants paying restitution, court

(continued on page 4)

WORK-STUDY STUDENTS REMINDED TO COMPLETE FORMS; ALSO 3% RAISES DUE JAN. 1—Faculty and staff who employ work-study students might remind them that in order to receive work-study funds next year, students must fill out the Family Financial Aids Statement of the ACT Needs Analysis Service between Jan. 1 and March 15, 1982.

Also, minimum raises of 3 percent, with a target of 5 percent, were approved for work-study students Jan. 1, according to the Columbia campus raise guidelines.

Roger Jett, senior personnel associate, says that the Student Wage Schedules were revised Oct. 9 to reflect the minimum 3 percent increase, and at that time the number of levels were reduced from six to five and descriptions of the levels were rewritten.

The following is the new Student Wage Schedule as approved by the Board of Curators Oct. 9 for the 1981-82 school year which reflects the 3 percent minimum increase due Jan. 1:

1981-82 STUDENT WAGE SCHEDULE

	LEVELS	STEPS			
		1	2	3	4
LEVEL I	Work which requires limited degree of training or skills.	\$3.45	\$3.57	\$3.72	\$3.86
LEVEL II	Work which requires considerable proficiency in a specialized skill or specialized experience.	\$3.78	\$3.93	\$4.09	\$4.26
LEVEL III	Work which requires a high degree of skill proficiency or training.	\$4.17	\$4.34	\$4.51	\$4.70

GRADUATE OR PROFESSIONAL STUDENT ASSISTANT

LEVEL IV	Entry level work in professional areas where a bachelor's degree is required.	\$4.60	\$4.79	\$4.99	\$5.18
LEVEL V	Advanced level work in professional areas requiring advanced capabilities or experience beyond the baccalaureate degree.	\$5.09	\$5.28	\$5.50	\$5.72

MIZZOU WEEKLY

Vol. 3, No. 14

A publication of the University of Missouri-Columbia faculty and staff, published every Friday during the academic year and once a month during the summer by the Office of Internal Communication, University Relations Division, 606 Maryland Ave. News deadline is noon Friday of the week before.

Advisory Board: Keith Sanders, Delmar Hatesohl, Roy Utz, Luverne Walton, Sandy Clark, Bill Blackwell, Jimmie Brechbuhler, Bob Derryberry, Leroy Harrison.

Editor: Catherine Kernen
 Asst. Editor: Barbara Smith Mellott
 Editorial Staff: Susan Thornsberry
 Patti Muck
 Jacqueline Gibson
 Francine Parker

Telephone: 882-6004

MIZZOU PEOPLE

Reusing Christmas trees after holidays is for the birds

Christmas trees discarded soon after the holidays may have another use.

The trees can take on new life as artificial bushes when placed to the advantage of bird watchers, says Erik Fritzell, UMC professor of forestry, fisheries and wildlife.

When a bird feeder is exposed and lacks nearby cover, Fritzell suggests laying the tree on the ground next to the feeder and securing it to the feeder as a barrier to drifting snow. "In that position the tree provides cover so birds can sit below the feeder out of the wind to feed," Fritzell says.

The tree may be most helpful to birds when there is little natural cover,

sometimes the case in newly developed subdivisions. "It would be better if people had natural vegetation in their yards, but when they don't, it does add to a bird feeding program," he says.

While the combination of a well-stocked feeder and cover at its base will bring more birds to your yard, it probably doesn't help birds survive except in the severest winters.

As a family project, attracting more birds to your corner of the world has several benefits. Children and adults working on a bird feeding project are sure to develop interest in what lives around them. Fritzell says identifying birds is a natural outlet for the

curiosity most people have.

Combine curiosity with the help of a good bird book and each new bird at the feeder expands the observations a person can make.

"The different species have different habits which are noticeable to bird feeder watchers," says Fritzell. "If you feed all winter, in the spring you can see them change their plumage," he adds. "In some ways it's better than watching TV."

One quick and easy family bird feeding project might be preparing a peanut butter feeder. Fritzell recommends drilling a series of one-inch holes in a five- to six-inch

diameter log. The holes can be filled with peanut butter and the log hung from a tree to create a handy perch for feeding birds.

Beyond peanut butter, Fritzell suggests these foods for wild birds' diets:

- Small black sunflower seeds, available in small quantities at grocery stores or in larger quantities from feed stores.

- True suet, a crumbly animal fat deposit found around internal organs rather than fat from the outer edge of a cut of meat.

- Old dried apples and other fruits.

- Nigerian thistle seeds, although expensive, will attract goldfinches, pine siskins and other species less interested in sunflower seeds.

Except in the severest summertime drought, a bird feeding program doesn't require additional water, says Fritzell. In the winter birds will eat any ice, snow or frost that is around, as well as wild berries which still contain moisture.

If the bird watching - bird feeding fever has you in its grip there are more elaborate ways to pursue your interest.

One species, the bluebird, could benefit from a birdhouse or box in the winter. Properly constructed, insulated and located bluebird houses are a reason for a recent upturn in bluebird numbers.

A main source for information on bluebird numbers is the Audubon Society's National Christmas bird count, held each year the week after Christmas in many areas across the country. Interested individuals are welcome to join these counts which help indicate if bird populations are increasing, decreasing or if a new species is invading the area.

Approximately 20 bird counts are held in Missouri each Christmas season.

—Sharon Curry
News Services



Erik Fritzell, UMC professor of forestry, fisheries and wildlife.

People

MILTON E. GROSS, associate dean of UMC's School of Journalism, will retire Feb. 15 after 40 years on the school's faculty.

Gross joined the UMC faculty in 1942 after teaching a year at the Texas College of Mines. He was appointed assistant dean of the journalism school in 1963 and associate dean in 1971. He served as acting dean in 1970-71. In 1973 he received the UMC faculty-alumni award.

Gross was elected a member of the accrediting committee of the American Council on Education for Journalism in 1959 and served as its chairman from 1965-67. He has been secretary-treasurer of the Accrediting Council since 1968 and will continue in that position. He has served on evaluation teams at more than three dozen schools and departments of journalism.

In 1953, before the University received its FCC grant for television channel 8, Gross began work as a promotion consultant for the University's television operation and

continued with KOMU-TV until 1958. During that period he established the school's first courses in television advertising.

FRED MCKINNEY, psychology professor at UMC for 47 years, died Nov. 18 at Boone Hospital Center. The 73-year-old professor emeritus died of heart failure.

McKinney, who taught psychology to more than 50,000 students, was instrumental in the development of the University's psychology department. His own work on learning and memory earned him an international reputation.

After his retirement in 1978, McKinney volunteered at Columbia's Woodhaven Learning Center and at the Missouri State Penitentiary in Jefferson City. He also spent six months teaching psychology to sailors aboard the USS Eisenhower during the Iranian hostage crisis.

McKinney's wife, Margery, died in February, 1981.

E. LEE FORKER, director of the UMC division of gastroenterology and liver disease, was recently elected vice president of the American Association

for the Study of Liver Diseases at the association's annual meeting in Chicago.

Forker will assume the presidency in 1982. The association includes 900 physicians from North America and abroad who are specialists in liver disease.

ARTHUR BERNDTSON, professor of philosophy, recently had a book published by Bucknell University Press entitled *Power, Form, and Mind*. Its thesis is that power is the one substance in all changes, and matter and mind are forms of this power; it is a new account of nature, man and God.

Philosophers may take an interest in Berndtson's book for its theory of power and creativity, scientists in its account of matter and life, phenomenologists in its doctrines of being and mind, and existentialists in its approach to freedom and diety.

Berndtson, who received the Byler Distinguished Professor Award in 1978, developed the theory of art as the distanced expression of emotion in his 1969 *Art, Expression and Beauty*. He also wrote the chapter on recent Latin American philosophy in the *Handbook*

of World Philosophy: Contemporary Developments Since 1945.

L. RUTH BENSON, former assistant professor of nursing, was awarded an honorary membership in the Alumni Association of the University by the Nursing Alumni Organization recently in recognition for her outstanding service and singular devotion to an educational ideal.

Benson taught at UMC for 18 years. During most of that time she taught "Fundamentals of Patient Care," the first course in which students worked with patients in the hospital.

CHARLES MITCHELL, a local social service activist and well-known educator, died Oct. 10, of a heart attack at Boone Hospital Center. He was 68.

Mitchell came to UMC in 1967 as the first director of the social work extension program. He served as co-chairman for two years of the Boone County Community Services Advisory Commission and as a volunteer in service programs. Mitchell was named Missouri Social Worker of 1980 by the National Association of Social Work. He retired from UMC three years ago.

UMC employees may save \$2,000 yearly in tax-free income

A new plan which allows University employees to save \$2,000 each year in tax-free income for their retirement will soon be available from the Mizzou Employees Credit Union.

Individual Retirement Accounts or IRAs will be available Jan. 1, 1982, to all full- and part-time University employees. The plan allows individuals to contribute 100 percent of their earned income, up to a maximum amount of \$2,000 each year, to an IRA. These accounts give individuals both tax-deferred interest and immediate tax savings. They are also transferable between institutions if an individual changes jobs.

Credit Union Manager Hal James says that contributions to an Individual Retirement Account can be deducted from an employee's reported income on federal tax forms each year. "This reduces your taxable income for that year and creates immediate tax savings," says James. "The interest earned by an IRA is not taxed until it is

withdrawn, along with the principle from the account, creating additional tax savings. Withdrawals can start when a person is age 59½, when presumably, the IRA holder will be in a lower tax bracket, creating still another tax benefit for the individual." Funds can be withdrawn prematurely, James says, but are subject to severe IRS penalties.

The tax savings to individuals under the new plan can be significant, James says; for example, in the 22 percent tax bracket (that of a married couple with a taxable income of from \$16,000 to \$20,000), the taxes saved by a \$2,000 contribution to an IRA would be \$440 each year. So in effect, James says, the \$2,000 deposit would only cost the individual \$1,560. Tax savings increase as the tax bracket rises, according to the following chart:

Taxable income married couple (1982)	Tax bracket	Tax saved by \$2,000 deduction	Out-of-pocket cost of IRA
\$20,200-24,600	25%	\$500	\$1,500

24,600-29,900	29%	580	1,420
29,900-35,200	33%	660	1,340
35,200-45,800	39%	780	1,220
45,800-60,000	44%	880	1,120

James says that the tax deduction, combined with tax-free compounding, allows employees to build very significant retirement funds for themselves. "It would be possible for a University employee to save one-half million for his or her retirement by depositing \$2,000 each year for 30 years," James says. "The accumulation will depend upon how much a person deposits, how long you have your IRA, and the market interest rates."

The following chart shows the total accumulation of funds for different annual deposits and periods, based on a 12 percent interest rate, although that rate is likely to vary over a long period. James says the Credit Union will be announcing its rate shortly:

Annual deposit amount	Number of Years			
	10	15	20	30
\$ 500	\$ 9,827	\$20,877	\$ 40,349	\$135,146
1,000	19,655	41,753	80,699	270,293
1,500	29,482	62,630	121,048	405,439
2,000	39,309	83,507	161,397	540,585

The plan is available to University employees as a result of the 1981 Economic Recovery Act, which extended IRAs to individuals already covered by retirement plans through their employers. "The IRAs are probably the best vehicle ever passed by Congress for an individual to create his or her own financial security," James says.

Through the Credit Union, employees can use payroll deductions to build their IRAs. The Credit Union will be mailing information to all employees shortly.

To sign up for the plan, employees can return the mail form from the brochures or contact the Credit Union, 909 University Avenue, at 882-4073.

Around the campus

from page 2

costs and fines up to \$150. Additional cases are being investigated by University Police.

"We want people to realize that misusing the WATS BOX is a federal offense," says Beverly Windsor, administrative associate for the Business Operations Office. "It's not something you can do and get by with it."

The WATS BOX, a system in which each user is assigned a six-digit authorization code, was installed in February. The first cases of misuse were reported this fall and include both employees and students.

The misuse is in a variety of forms, according to Windsor. Some of the

numbers have been stolen or are being shared with unauthorized people. The individual departments are responsible for the security and confidentiality of authorization numbers. Windsor suggests that department administrators request new numbers if misuse is suspected.

For more information, contact Windsor, 401 E. Stewart Road, 882-2345.

THE COLLEGE OF EDUCATION held its annual recognition banquet for fall semester graduates last Friday in the Memorial Union Ballroom. Each graduate received individual recognition and mention of honors earned while at the University.

In addition, Arni Dunathan, professor of education, received a Teacher of the Year Award from Kathi Boothby,

president of the college's Student Council.

Provost Ronald Bunn was guest speaker. Other special guests from outside the University were State Senator Roger Wilson; Arthur Mallory, Missouri commissioner of education; Russell Thompson, superintendent of Columbia Public Schools; and State Rep. Bill Marklund of the 47th district.

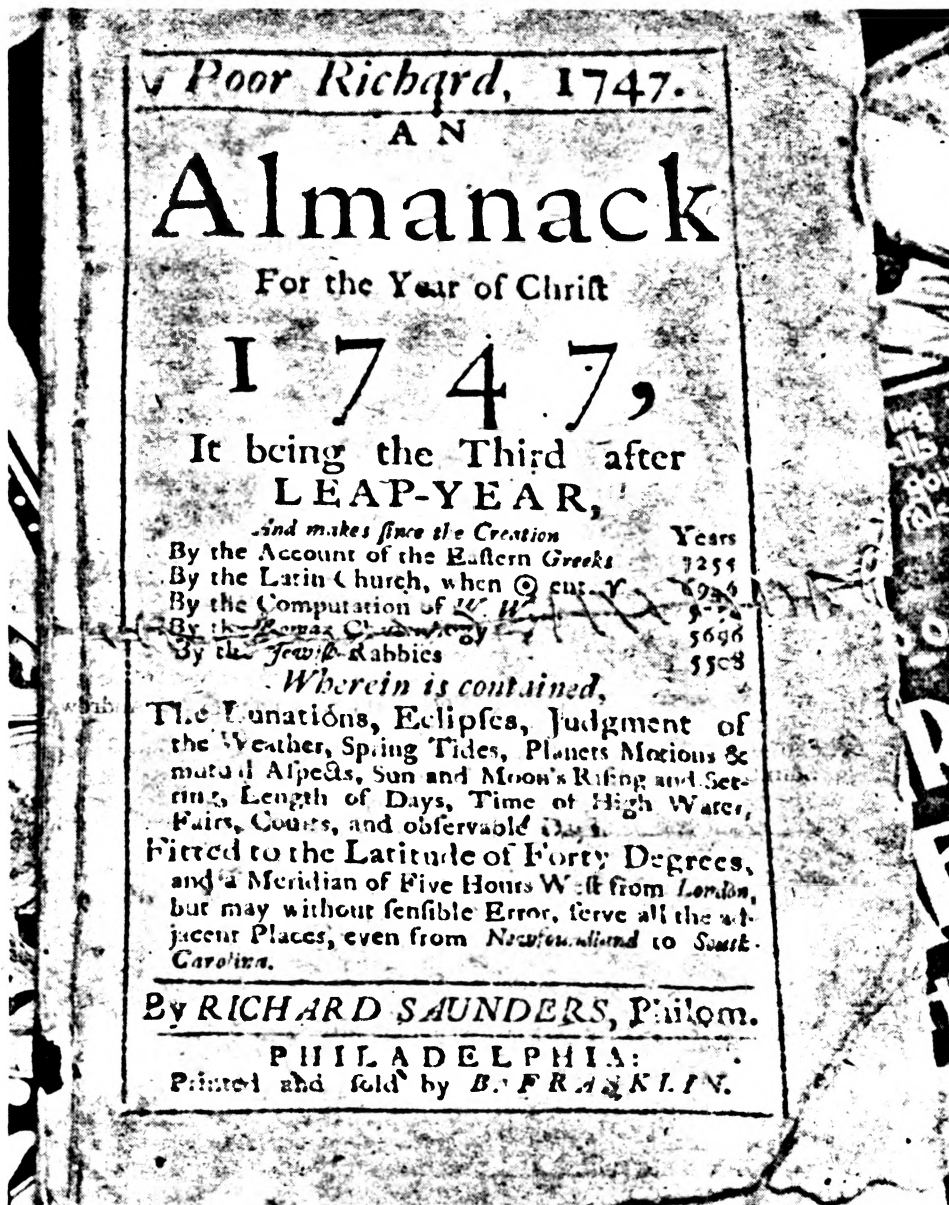
UNIVERSITY NOW HAS BACK-UP POWER SOURCE—Mehrdad Fotoohigiam, UMC Energy Conservation Coordinator, announced that the University now has a closed power loop to campus. This will provide high voltage electricity for back-up power during power failures. This is especially important for science departments, allowing experiments to

continue, instead of being shut down as they were in the past during power failures.

THE MSA CRAFT STUDIO ART FAIR-81 is being held today and tomorrow in the lounge of the Memorial Union. Artists will be exhibiting and selling work in a variety of media including fiber, clay, metal, stained glass, photography, and graphics.

The fair will be highlighted by the following spots of live entertainment: Friday: Signing Singers, 10:30; Don Choates, 1:30; Tuba Ensemble, 3:00; Saturday: Lee Ruth, 10:00; Paul Fotsch/Winn Horner, 12:00; The LBC Choir, 1:30.

UMC's collection of collections: from gavels to spiders



An almanac from the University's collection in Ellis Library.

Few people realize it when they are students here, and even fewer find out when they return to Mizzou for sporting events, but UMC is a virtual treasure trove of the unique, unusual and interesting.

Like poking through grandmother's attic, exploring the campus reveals dozens of collections ranging from antiquities to zoological specimens, plus almost everything in between.

Few other places offer the variety of experiences the University has in so small an area. Where else can you tour a full room of slithering snakes, as in 217 Stewart Hall, and then walk just a few hundred yards to the State Historical Society Museum in Ellis Library and examine a George Caleb Bingham painting or one of Mark Twain's favorite pipes?

Nearly all UMC collections are open to the public, and visiting can be fun as well as educational.

For instance, if you find yourself in a fowl mood while you're on campus, you can duck into Lefevre Hall and take a gander at the Glen Smart Waterfowl and Upland Game Bird Collection. There you can see beautifully preserved ducks, geese, swans, scoters, pheasants, grouse, quail, ptarmigan, turkeys and pigeons.

But if you are in the mood to see something on a lower order (biologically speaking, of course) you can creep into the Wilbur Enns Entomology Museum, 3-38 Agriculture Building, and enjoy a million specimens of insects, spiders and other arthropods.

Of course, if you would prefer to examine a bit of America's past, a short walk away in the Special Collection section of Ellis Library you can sample the University's collections of old almanacs, Confederate money, World War I and World War II posters or copies of old-time Fourth of July orations.

If that doesn't satisfy your taste for the unusual, head over to the journalism school in Walter Williams Hall and look at its collection of gavels. There is a gavel made from the propeller of an airplane flown by Lindbergh, one turned from a log of an American Revolutionary War fort and one formed from a World War II Japanese hand grenade. (Journalists like to start their meetings off with a bang.)

If you are more interested in the out-of-doors, or have a growing interest in gardening, visit the Woodland and Floral Gardens east of the Agriculture Building on Hitt and Rollins streets. There you can see mini-botanical gardens consisting of Rhododendrons, a native woodland and a rock garden.

If the rocks in the garden should harden your interest in the subject, you probably would want to go over to the Geology Building on red campus and see the hundreds of mineral and fossil specimens on display there.

Visits to all these collections would be a full day. However, you would have missed the Art and Archaeology Museum with its large collection of ancient and modern art; artifacts from world cultures in the Anthropology Museum; student and faculty work in the Fine Arts Gallery; old sporting equipment and trophies at the Hearnes Multipurpose Building; the Scruggs-Vandervoort-Barney Art Collection of Missouri scenes in Jesse Hall and the Botany Greenhouses and Herbarium, just to name a few.

The uses of these collections vary from department to department, but they contribute greatly to the learning process on campus. Among others, the UMC collections provide hands-on experience for students, specimens for research and assurance that the past will be preserved.

—Terrell Dempsey
News Services

Uehling addresses Staff Council concerning campus budget future

"Some people think the University's budget problems are temporary," Chancellor Uehling told Staff Council at their Nov. 17 meeting. "But the governor has said the reductions are permanent...and the revenue picture is not good in Missouri."

Uehling has been speaking to campus groups recently on the necessity of establishing a campus reduction plan to meet the long-range problems facing the University. "As a person responsible to the institution, I wanted to look at the fiscal situation and be prepared," she said. "We need to plan for the future in a responsible way. We have been so busy responding to the primary problem (of mid-year raises) that to get beyond the immediate battle becomes difficult."

Uehling said that in addition to the state's fiscal problems, a national decline in enrollment has been projected for the mid-eighties. "By 1994 there will be a 29 percent decline in 18-year-olds," she said, and coupled with this year's bleak financial aid picture, decline of enrollment could occur even more rapidly.

UMC divisions have been asked to reduce their salary and wage budgets this year by \$1.8 million to fund January pay raises. But for the long term, UMC must undergo a \$20 million reduction over three years to keep faculty salaries at the median of the Big Eight schools and to bring staff salaries closer to market value.

With UMC's general operating budget at \$115 million, the \$20 million long-term reductions will have a significant effect on UMC's future.

"The amount we are discussing for the long-term reductions is one-sixth of our present budget," the chancellor said. She characterized the reduction program as one "to reduce what we are doing and put money into people."

Last month the campus Criteria Selection Committee developed

standards by which UMC programs could be evaluated for possible elimination. Those criteria have now been rephrased to apply to UMC support programs, the chancellor said, and the next step of the process will be to collect information which will determine which programs should be looked at by committees.

Although the committees to evaluate the programs have not yet been named, Uehling said the provost will be responsible for appointing a committee to review academic programs, and a similar review process will be used for UMC's support services.

And the chancellor said that although some unions in the private sector have agreed to lower salaries in times of financial distress, that unions have made greater gains throughout the inflation, while people working for non-profit institutions have been giving up buying power.

"We are already losing people (at UMC) and the grapevine says some really good individuals have asked persons to write them recommendations for jobs," the chancellor said. "There are some very good people committed to this institution, but we stand to lose more and more people if we don't meet salary demands."

The chancellor also attributed the 38 percent yearly non-instructional staff turnover on the four campuses as partly due to the salary structure.

Council member Harold Sims described to the chancellor the uncertainty staff are feeling during the time of program reductions. Uehling responded that it was a difficult time for all, and that the reduction process has to be done "rationally, fairly and as quickly as we can."

Recorder Pat Ives told the chancellor that some departments have given their staff the option of changing their full-time jobs to part-time. But Ives

Staff Council announces election results

Winners of the recent staff council election are HAROLD SCHULTE, biomedical equipment technician, Hospital and Clinics, and PAT IVES, library assistant II, Ellis Library, technical/paraprofessional classification; MYRNA BRUNING, senior assistant director of nursing, University Hospital and Clinics, administrative/professional classification; HARRI PALMER, administrative assistant, Art Department, secretarial/clerk classification; and JOHN BULLARD, plasterer III, Carpenter Shop, Crafts/service/maintenance.

Over 2,400 ballots were cast by the

Dec. 4 deadline, which is over 600 more than last year. The elected council members will replace Joy Ingersoll, senior secretary, Medical Records; Jerry Nichols, steamfitter, Steam Shop; Libby Miederhoff, manager, Accounting Services; and Steve Cox, senior electronics technician, Biological Sciences.

The new council members began their three-year terms at their first meeting yesterday.

The Staff Advisory Council is a 16-member body representing UMC's administrative, service and support staff which acts as an advisory group to the chancellor.

questioned whether this was a wise move for staff to make. "Will they then be cut first?" she asked.

Uehling responded that departments wise enough to offer part-time positions now would already be planning for the reductions, and would not then say, "You have accepted part-time work, and now you will have to go."

In other business at the meeting:

- The council discussed the dental plan. Sims said that many employees were disappointed with the coverage offered by the University, since the cost paid by the employee really only covers preventive dentistry. If an average dental visit is \$30 per year, Sims said, an employee would just about come out even after paying the premiums. There is an additional \$100 deductible required on fillings and extractions.

Vice Chancellor Ria Frijters replied that the University has just begun the coverage, but once it is used and evaluated, perhaps rates or coverage would change in the future. Also, she said, a plan which provides more coverage also costs more.

- Citing the University's policy on sick leave as one of his "pet peeves," Sims said the University needed some incentive to encourage employees to accumulate it. President Olson has established a Task Force of

representatives from each campus to look into staff benefits, Frijters said; that committee will be looking into the sick leave policy.

- The council discussed its proposals for additional benefits for employees, such as adding personal holidays or closing the University over Christmas. Frijters said those benefits had been discussed at system meetings of business and financial managers and would also be discussed by the new UM Staff Benefits Task Force.

- Frijters explained that the mid-year raises were an unusual occurrence this year and that the University will revert back to either a fall or summer raise schedule for 1982.

- Ron Haffey, chairman of the Election Committee, reported his committee had received 127 nominations, over twice as many as last year. Staff Council has grown dramatically in the last three years, he said, and may need to consider a better mechanism to screen the applicants down to 15 candidates. Also, Haffey recommended that persons be nominated for council positions earlier next year.

- Also at the meeting, the council approved a letter to be forwarded to the chancellor advocating that educational assistance benefits be offered to part-time staff.

Department chairpersons announced for 1981-82 school year

The following persons are UMC department chairpersons or directors for the 1981-82 academic year:

- School of Accountancy: Rick Elam (Dir.)
- Advertising: Linda A. Shipley
- Aerospace Studies: Johnnie R. Reeder
- Agriculture Economics: Charles L. Cramer (Interim)
- Agricultural Engineering: C. LeRoy Day
- Agronomy: Roger L. Mitchell
- Anatomy: David E. Scott
- Anesthesiology: G. William Eggers
- Animal Science: Bobby D. Moser
- Anthropology: H. Clyde Wilson
- Art: Brooke B. Cameron
- Art History & Archaeology: David Soren
- Atmospheric Science: Wayne L. Decker
- Biochemistry: Milton S. Feather
- Division of Biological Sciences: Warren R. Fleming (Dir.)
- Broadcasting: Roger A. Gafke
- School of Business: To be named at a later date.
- Chemical Engineering: George Preckshot
- Chemistry: Pierre O. Crabbe
- Child & Family Development: Marilyn Coleman
- Child Health: Giulio J. Barbero
- Civil Engineering: John O'Connor
- Classical Studies: Eugene N. Lane
- Clothing & Textiles: Kitty Dickerson
- Community Development: Alvin S. Lackey
- Computer Science: Donald R. Shurtleff
- Curriculum & Instruction: W. Wayne Dumas
- Dairy Science: Frederic A. Martz
- Economics: Carmen F. Menezes
- Educational Administration: Richard V. Hatley
- Educational & Counseling Psychology:

- Warren R. Seymour
- Electrical Engineering: Charles Slivinsky (Interim)
- English: J. Robert Barth
- Entomology: Thomas R. Yonke
- Extension Education: John G. Gross
- Family & Community Medicine: Jack M. Colwill
- Family Economics & Management: Edward Metzen
- Finance: David West (Interim)
- Food Science & Nutrition: H. Donald Naumann
- School of Forestry, Fisheries & Wildlife: Donald P. Duncan (Dir.)
- College of General Studies: Walter C. Daniel (Dir.)
- Geography: Walter A. Schroeder
- Geology: John M. Sharp, Jr.
- Germanic & Slavic Studies: Ruth H. Firestone
- Health & Physical Education: Ralph E. Stewart
- School of Health Related Professions: Herbert S. Goldberg
- Higher & Adult Education & Foundations: Herbert W. Schooling (Interim)
- History: Arvarh E. Strickland
- Honors College: Theodore A. Tarkow (Dir.)
- Horticulture: Donald A. Hegwood
- Housing & Interior Design: Kate Rogers
- Human Nutrition, Foods & Food Systems Management: Richard Dowdy
- Industrial Engineering: Jay Goldman
- Information Science: Bert R. Boyce
- Intercollegiate Athletics: David R. Hart (Dir.)
- Library Science: Francis J. Flood
- Management: Earl Lundgren
- Marketing: Donald Shawver
- Mathematics: Keith W. Schrader

- Mechanical & Aerospace Engineering: Paul Braisted
- Medicine: Patrick H. Henry (Interim)
- Microbiology: Richard Finkelstein
- Military Science: Richard C. Rice
- Music: Donald E. McGlothlin
- Naval Science: Simon J. Kittler
- Neurology: J. Donald Easton
- News-Editorial: George Kennedy
- Nuclear Engineering: Walter Meyer
- Obstetrics & Gynecology: David G. Hall
- Ophthalmology: Robert P. Burns
- Pathology: John F. Townsend
- Pharmacology: Leonard R. Forte
- Philosophy: Joseph J. Bien
- Physical Medicine & Rehabilitation: Luis Viscot (Interim)
- Physics: Samuel A. Werner
- Physiology: James O. Davis
- Plant Pathology: Victor H. Dropkin
- Political Science: David A. Leuthold
- Poultry Science: James E. Savage
- Practical Arts & Vocational-Technical Education: Richard C. Erickson
- Psychiatry: James M.A. Weiss
- Psychology: Sam C. Brown

- Public Administration: Robert Denhardt
- Institute of Public Safety: Larry L. Brockelsby (Dir.)
- Radiology: Gwilym Lodwick
- Recreation & Park Administration: David Compton.
- Religious Studies: Jill Raitt
- Romance Languages: Edward J. Mullen
- Rural Sociology: Michael F. Nolan
- School of Social Work: Richard E. Boettcher (Dir.)
- Sociology: Barbara J. Bank
- Special Education: Richard C. Schofer
- Speech & Dramatic Art: Stephen M. Archer
- Statistics: Asit P. Basu
- Surgery: Donald Silver
- Veterinary Anatomy-Physiology: Robert C. McClure (Interim)
- Veterinary Medicine & Surgery: Louis A. Corwin (Interim)
- Veterinary Microbiology: C. Andrew Carson
- Veterinary Pathology: Arthur A. Bickford

United Way

from page 1

achieving over 60 percent participation in districts with more than 20 persons.

In addition, ten units with more than 10 persons were honored for achieving 60 percent or more participation: Higher and Adult Education; Housing and Interior Design; Atmospheric Science; Statistics Department; Security Office/Watchmen; Building Operations/Building Services; Museum of Art and Archaeology; Hospital

Admissions Office; University Hospital Social Services; and UMca Budget Services.

Also honored was the Student Financial Aids Office, which received a major unit award for the highest percentage participation in a unit with over 10 persons. Their participation was 132 percent; that office received a decorated cake and a traveling plaque.

A special award was also presented to Beta Sigma Psi Fraternity for contributing \$381 to the United Way Drive through contributions to the Trivia Bowl.

Footnotes

COLLEGE OF AGRICULTURE

CHARLES W. GEHRKE, professor of biochemistry and manager of the Experiment Station Chemical Laboratories, and **KENNETH C. KUO, SR.**, research chemist, recently attended the *Life Science '81* meetings in New York City, New York, from Nov. 3-6, 1981. They presented a session entitled "Quantitative Chromatography of the Nucleoside Composition of Nucleic Acids." In addition, Gehrke was a speaker at a session entitled "Techniques and Significance of Nucleic Acid Research."

COLLEGE OF BUSINESS AND PUBLIC ADMINISTRATION

STANLEY J. HILLE, Dean of the college, has been appointed to the administrative committee of the Missouri Chamber of Commerce.

DEPARTMENT OF CHEMISTRY

TUCK C. WONG, professor, has been awarded \$84,000 from the National Science Foundation for his work on "NMR Investigation of Water Dynamics." The award is for the period Aug. 1, 1981 through Jan. 31, 1985.

STANLEY E. MANAHAN, professor, has been granted \$17,105 from the U.S. Department of the Interior, Office of Water Research and Technology, for his work on "Sorption of Chlorinated Hydrocarbons, Acid, Heavy Metals and Excess Nutrients in Water Using Coal-Derived Solids." The award extends from July 1, 1981 through June 30, 1982.

Manahan has also received an award of \$5,597 from the U.S. Department of Energy for research on "Characterization of In Situ Synthetic Fuels Conversion By-Products for Indicator Species, Contamination Potential, Interaction with Mineral Strata and Amenability to Treatment." The award extends from July 1, 1981 through June 30, 1982.

ELMER O. SCHLEMPER, professor, has been awarded \$70,000 from the National Science Foundation for his work on "Short Hydrogen Bonds: Neutron, Gamma, and X-ray Diffraction; Other Experimental Studies and Theoretical Correlations." The award covers the period Aug. 15, 1981 through Jan. 31, 1984.

COLLEGE OF EDUCATION

FLOYD G. DELON, professor, chaired the general session of the National Organization on Legal Problems in Education held in Houston, Texas, November 12-14. Delon is president of the NOLPE and will also serve on the Board of Directors for the coming year.

JERRY VALENTINE, associate professor, was the principal speaker for a preconvention seminar at the NOLPE meeting.

RICHARD V. HATLEY, chairperson and professor, and **ROBERT C. SHAW**, associate professor of education in the department of educational administration, conducted a session on "The Cost of Decline" at the annual convention of Missouri State Teachers Association in St. Louis on Nov. 5-6.

MARY ANN DEVORE, research associate in the department of practical arts and vocational-technical education, was the author of an article entitled "Dealing With Sexism in Education" appearing in the fall issue of *Canadian Home Economics Journal*.

JAMES R. KOLLER, associate professor of educational and counseling psychology, has published an article entitled "A Comparison of Obtained and Adjusted Mental Age Scores on the Stanford-Binet" in the October issues of *Psychology in the Schools*.

Koller has also been named by the Missouri State Board of Education to the Board of Advisors of the Missouri School for the Deaf.

The Rehabilitation Counselor Education program has received continued accreditation by the Council on Rehabilitation Education, which is recognized by the Council on Postsecondary Accreditation as the accrediting body for master's degree programs in rehabilitation counselor education.

RICHARD W. THORESON, professor of counseling and personnel services and director of the Employee Assistance Program, directs the UMC program which prepares master's degree graduates for careers in hospitals, rehabilitation centers, sheltered workshops, alcoholism treatment centers and state offices of vocational rehabilitation.

The College of Education has received a \$26,656 grant from the Department of Education, Office of Special Education.

The funded project is designed to improve graduate programs in educational administration and counseling through assisting public and private schools that serve handicapped youth in regular settings.

BOB G. WOODS, dean, serves as project director and **RICHARD HATLEY**, chairman of educational administration, serves as project coordinator.

JAMES L. CRAIGMILE, professor of educational administration, and **NORMAN C. GYSBERS**, professor of counseling and personnel services, will act as department liaisons.

ROBERT CALLIS, professor of counseling and personnel services, has been recognized by the Missouri College Personnel Association (MCPA) for outstanding contributions to college personnel work.

Callis was a founding member of MCPA approximately 10 years ago. He was president of the American College Personnel Association (ACPA) in 1959-60 and served as editor of the *Journal of College Student Personnel*, the official ACPA journal, from 1963-69.

Phi Delta Kappa, the professional fraternity in education, celebrated its 75th anniversary at its 38th Biennial Council Oct. 22-25 in Chicago. Participants from Gamma Chapter, UMC, included **GENE HUFF**, principal of Oakland Junior High School and Gamma Chapter Delegate, **JO BEHYMER**, assistant dean, associate professor and Gamma Chapter president and **CAREY SOUTHALL**, professor of curriculum and instruction and Phi Delta Kappa area coordinator.

HELEN K. HARRISON, assistant professor of curriculum and instruction, had an article, "Full Service Music Education for Handicapped Children," published in the current issue of the *Missouri School Music Magazine*.

DEPARTMENT OF ENGLISH

JOHN MILES FOLEY, associate professor, edited *Oral Tradition*, a special issue of *Canadian-American Slavic Studies (Revue Canadienne-Américaine d'Études Slaves)*, 15, no. 1 (Spring 1981). His article, "Oral Texts, Traditional Texts: Poetics and Critical Methods," appears in the special issue, pp. 122-45.

A manuscript of poetry entitled *The Unchanged Dark*, written by **JOE DITTA**, postdoctoral candidate and teaching assistant, was a finalist for the 1981 Walt Whitman Award, sponsored by the American Academy of Poets.

Ditta has published poetry recently in *Sou'wester* and *Chariton Review*; a long poem, "Poem of Exceptions," is due out soon in *Modern Poetry Studies*. He also has several articles forthcoming: a book review in the winter issue of *Wind/Literary Journal*; an article review, "Poetry from the Small Presses," in the Spring 1982 issue of *Tar River Poetry* and "The Jewel and the Amethyst" in June issue.

JO SAPP, master's candidate in creative writing and teaching assistant, has published a short story, "Nadine at 35—a Synopsis," in the September 1981 issues of the *North American Review*. Another story, "Mama's Way," will appear in the November issue of *Thornleigh Review*.

ROBIN BEHN, master's candidate in creative writing and teaching assistant, was selected to be a scholar at the Breadloaf Writers' Conference in Middlebury, Va., during August. She has published poetry in the most recent issues of *The Seattle Review* and *Dark Horse*.

DEBORAH DIGGES, postdoctoral candidate and teaching assistant, will have her poems entitled "Leap Years" and "The Bomb Shelter" appear in the 1981 AWP publication of *Intro 12*, featuring work by some of the best new writers in the country. "Painting by Number," will appear in the fall issue of the *Seattle Review*.

GLENDA WINDERS, postdoctoral candidate and teaching assistant, recently published an essay entitled "Collectors Should Be Put in Their Places" in the Oct. 11 issue of the *Kansas City Star Magazine* and will have a short story, "Glimpses," appear in the February issue of *Thornleigh Review*.

Tidally-Influenced Deltaic Sedimentation in the Arkoma Basin: Desmoinesian Hartshorne Sandstone." The paper was co-authored by **ANTHONY IANNACCIONE** of the U.S. Bureau of mines and four of Houseknecht's graduate students.

W.D. KELLER, professor emeritus, recently published a paper entitled "Scanning Electron Micrography of Hydrothermally Synthesized Kaolin and Parent Materials During Synthesis Reactions." The paper appeared in *Tschermaks Mineralogische und Petrographische Mitteilungen*. It was co-authored with **Lahodny-Sarc** and **Dosen-Sver**, professors of the University of Zagreb, Yugoslavia.

JOHN M. SHARP, JR., associate professor and chairman of the department, recently presented two talks at the University of Texas at Austin. The talks were entitled "Hydrogeologic Characteristics of Major Flood Plain Aquifers" and "Application of Hydrogeologic Models to Problems of Antimony and Mercury Mineralization in Tuscany, Italy."

RAY ETHINGTON, professor, has accepted a position as Special Publications Editor of the *Society of Economic Paleontologists and Mineralogists*. Ethington will also serve as a member of the SEPM Council.

Ethington was editor of many technical publications and the *Journal of Paleontology*.

GERMANIC & SLAVIC STUDIES

RUTH FIRESTONE, associate professor of German and chairman of the department of Germanic and Slavic Studies, attended the meeting of the South Central Modern Language Association in Austin, Texas, in October. She presented a paper, "The Literacy Classification of Dietrich and Wenzelau: A Re-evaluation," which will appear in a longer version in the February, 1982, issue of *German Studies Review*.

INGEBORG HENDERSON, assistant professor of German, organized and chaired the Fall Conference of the Missouri Chapter of the American Association of Teachers of German, which met at Westminster College in Fulton, in September. She presented a paper on "Teaching Business German" at the meeting.

Henderson was the featured speaker for the annual Fall Semester Lecture in the Humanities at Purdue University in October. In November,

Music. The three productions planned will focus on Loman Cansler, a Kansas City song collector and singer, R.P. Christeson of Auxvasse, an authority on Missouri fiddle music and Max Hunter, a Springfield folklore collector and performer.

The videotapes will be distributed by the Extension Division to public and other television stations in Missouri and will be available for loan to groups and schools. Copies will be deposited in the Western Historical Manuscript Collection for the use of researchers.

DEPARTMENT OF HISTORY

GERALD BARRIER, professor, currently serves as Press Advisor and Chairman of the Publications Committee, American Institute of Indian Studies. In that capacity, he chaired an advisory meeting in Washington, D.C., on October 30.

Barrier also participated in panels and discussion groups on Indian publishing at the Wisconsin South Asia Conference, Nov. 5-7 in Madison, Wis.

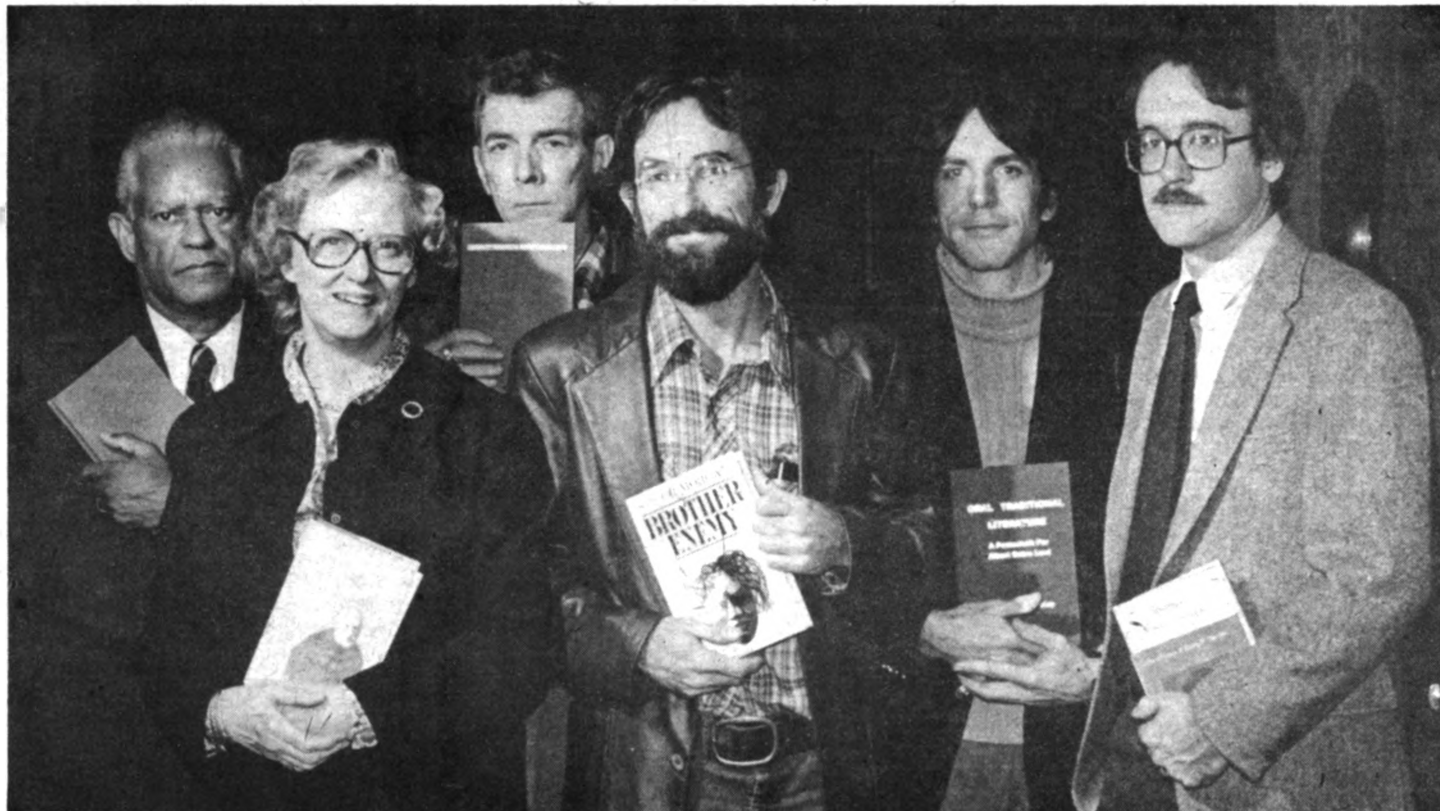
NOBLE E. CUNNINGHAM, JR., professor, is the author of *The Image of Thomas Jefferson in the Public Eye: Portraits for the People, 1800-1809*, published by the University Press of Virginia, Charlottesville, 1981.

ROBERT J. ROWLAND, JR., professor, will read two papers at the annual combined meeting of the American Philological Association and the Archaeological Institute of America. "Surface Surveys at Serramanna and Ozieri, Sardinia," will be read at the AIA meeting and "Books of Lists: Observations on Aeneid 6-8" will be read at the Vergilian Society sessions of the APA meeting in San Francisco in December.

CHARLES E. TIMBERLAKE, professor, served as Coordinator of the Seminar on Tsarist Russia at the University of Illinois-Urbana's Summer Russian Research Laboratory for scholars and has been invited for a repeat performance for summer 1982.

From Sept. 20-23, Timberlake participated in the annual convention of the American Association for the Advancement of Slavic Studies (AAASS) in Monterey, Calif. He participated as chairman of several committees, member of AAASS Board of Directors and a member of the Program

Larry Boehm



Department of English faculty members who published books this semester were honored at a reception last week. From the left are: Walter C. Daniel, author, *Images of the Preacher in Afro-American Literature*; Mary M. Lago, editor, *Burne-Jones Talking*; Thomas McAfee, author, *Flight*; Speer Morgan, author, *Brother Enemy*; John Miles Foley, editor, *Our Traditional Literature - A Festschrift for Albert Bates Lord*; and Robert Sattelmeyer, contributing editor, *Journal Vol. 1, 1837-1844: The Writings of Henry D. Thoreau*.

SCHOOL OF FORESTRY, FISHERIES AND WILDLIFE

DONALD P. DUNCAN, director of the school, participated in a Comprehensive Review of the forestry program at the Michigan Technological University at Houghton, Michigan, Nov. 15-19 at the request of USDA, Cooperative Research and the Bureau of Education Administration.

BRUCE E. CUTTER, assistant professor of forestry, is co-author of a paper entitled, "Temperature Estimates of the 1980 Directed Blast of Mt. St. Helens, Washington, USA, from Thermal Effects on Trees and Buried Wood," with Norman G. Banks of the USGS Hawaiian Volcano Observatory. Banks presented the paper in August at the IAVCEI Symposium on Arc Volcanism. The symposium was sponsored by the Volcanological Society of Japan and the International Association of Volcanology and Chemistry of the Earth's Interior.

Cutter has been studying samples of wood and char from Mt. St. Helens and using the appearance of the wood as seen by scanning electron microscopy to determine the temperature of the blast.

E.A. MCGINNIS, JR., professor of forestry, attended the Forest Products Utilization Research Conference annual meeting in Madison, Wis. from Oct. 26-29.

DEPARTMENT OF GEOLOGY

DAVID W. HOUSEKNECHT, assistant professor, recently received the A.I. Levorsen Memorial Award at the Mid-Continent Sectional Meeting. This award is given by the American Association of Petroleum Geologists for the best paper each meeting, with particular emphasis on creative thinking toward new ideas in exploration. The paper was entitled "High-constructive,

Henderson attended the national meeting of the American Association of Teachers of German held in Denver. She presented a paper on "The Undergraduate Internship," and represented the Missouri Chapter of AATG in her role as chapter president.

She was elected president of the section on "German Literature Before 1700" at the South Central Modern Language Conference in Austin, Texas. Henderson was also elected President of the German I section at the 1981 Midwest Modern Language Conference in Wisconsin.

JOHN LALANDE, assistant professor of German, published "Survey of Doctoral Degrees Granted in Foreign Languages in the United States: Autumn, 1979—Calendar Year, 1980" in *Modern Languages Journal*, 65, 1981, pp. 295-315. The study was co-authored by David Bensler of the Ohio State University.

ADOLF E. SCHROEDER, professor of German, served as a panelist for radio call-in programs in Moberly, Mexico and Columbia this fall. The programs were sponsored by the Missouri Committee for the Humanities and Northeast Missouri State University.

Schroeder spoke at annual meetings of historical societies and preservation groups in Warren County, Hermann and St. James in October. His slide-tape series, "Missouri Origins: The Landscape of Home," was shown at the annual conference of the Missouri Library Association. The three programs are made available by the State Library to libraries and groups throughout the State.

ADOLF E. SCHROEDER, professor of German, and **LOIS GANDT**, senior media specialist at the Academic Support Center, have received a grant from the Missouri Arts Council to produce a series of documentary videotapes on Missouri Folk

Committee for the 1983 AAASS convention to be held in Kansas City.

Timberlake also represented UMC at the meeting of International Research and Exchanges Board (IREX) Campus Representatives, which administers the exchange of scholars between the U.S. and Soviet-Bloc countries. UMC has been chosen by three East European scholars as the U.S. university at which they wish to conduct research this year.

RUSSELL ZGUTA, professor, published "Medicine as Reflected in the Laws of Early Russia," in the January issue of *Russian Review*.

COLLEGE OF HOME ECONOMICS

MARGARET FLYNN, professor in human nutrition, foods and food systems management and family and community medicine, has been appointed by Secretary of Agriculture John R. Block to serve on the Swine Health Advisory Committee. The committee will consult with the Secretary of Agriculture in evaluating the adequacy of state laws and regulations and their enforcement in meeting the minimum standards of the Swine Health Protection Act of 1980.

UMC and the Department of Housing and Interior Design received a \$2,000 scholarship grant Nov. 4 from the National Association of Homebuilders. Additional grants from home building associations throughout the state bring to \$4,500 the monies available in 1981-82 to UMC students in majors related to homebuilding.

SCHOOL OF JOURNALISM

KBIA-FM, UMC's radio station, received three first place awards and two honorable mentions in the Missouri Broadcasters Association's 12th annual competition honoring outstanding

(continued on page 7)

Footnotes

from page 6

achievement in broadcasting. The Texas Association of Broadcasters judged the entries which were aired between Jan. 1, 1980 and June 30, 1981.

First place awards went to an investigative series on Missouri's "big truck" legislation, reported by Kent Malinowski, a senior in the journalism school, "Midday Report," produced by Kent Martin, KBIA staff member, and a public service announcement dealing with the Boone County Fire Protection District, produced by Kevin Fitzgerald, a 1980 UMC graduate.

Honorable mentions were given to a sports feature reported by Dean Davison, a senior in the journalism school, and a promotional announcement produced by Stewart Brunner, a 1980 UMC graduate.

SCHOOL OF MEDICINE

GORDON SHARP, professor/director of immunology and rheumatology, presented "Subsets of SLE and Mixed Connective Tissue Disease" at Advances in Systematic Lupus Erythematosus and Lupus Nephropathy meeting at the Barbazan Plaza Hotel in New York City, Oct. 1-3. The meeting was co-sponsored by the National Kidney Foundation, the American Rheumatism Association and the Arthritis Foundation.

Sharp also presented "Association of PSS with other Connective Tissue Diseases (Overlap Syndromes)" in Austin, Texas, at the Scleroderma Symposium meeting held on Oct. 19-23.

BERNHARD SINGSSEN, associate professor of child health, and GORDON SHARP, professor/director of immunology and rheumatology, attended the NIH Multipurpose Arthritis Centers Directors Meeting in Washington, D.C., on Oct. 4-6.

CHARLES R. BODEM, post-doctoral fellow, attended a symposium entitled "Current Concepts of Aminoglycoside Toxicity" in New Orleans, Louisiana, from Oct. 1-3.

LARRY J. STRAUSBAUGH, assistant professor of infectious diseases, presented a paper entitled "Cefoperazone Therapy" in Geneva, Switzerland, on Oct. 1-7.

ALAN FINESILVER, resident physician, presented "Concanavalin A Induced Amplifier T Cell" at the Midwest Autumn Immunology Conference in Minneapolis, Minn., on Oct. 11-13. Also at the immunology conference DEBORAH WILSON, instructor of immunology and rheumatology, presented "In Vitro Plaque Forming Cell Responses to Sheep Erythrocytes in MRL Mice" and served as the moderator for the Aging and Auto-immunity workshop.

BERNHARD SINGSSEN, associate professor of child health, SARA WALKER, associate professor of immunology and rheumatology, HELEN MULLEN, associate professor of medicine microbiology, MARGARET ALSAUGH, associate professor of immunology and rheumatology, and GORDON SHARP, professor/director of immunology and rheumatology, presented papers at the Autumn Rheumatology Symposium, in Columbia, Mo., on Oct. 29-31.

E. DALE EVERETT, professor/director of infectious diseases, attended a symposium entitled

"New Generation of Beta-Lactam Antibiotics" in New Orleans, Louisiana, on Oct. 20-21.

RECREATION AND PARK ADMINISTRATION

GLENN WEAVER, project director of recreation extension, gave two presentations at the State-Wide Extension Youth Specialist In-Service Training Conference. The presentations discussed family camping and the future role of extension in 4-H camping and addressed management techniques. The conference was Sept. 15 and 16 in Potosi, Mo.

DAVID M. COMPTON, chairman, attended Walt Disney World Magic Kingdom College Program Educators Forum Sept. 17-19 at Walt Disney World, Buena Vista, Fla.

Compton was one of 45 educators invited to review the college program. The UMC Department of Recreation and Park Administration is developing an affiliation with the nation's largest commercial recreation facility.

Compton also gave a presentation on "Therapeutic Recreation and Comprehensive Leisure Services: A View from Academia" at the Veterans Administration Central Office Meeting in September in Washington, D.C.

GERALD HITZHUSEN, recreation extension specialist, has received the distinguished service award of the National Therapeutic Recreation Society in recognition of his service to the society.

Hitzhusen also gave a keynote speech on "Therapeutic Recreation During the International Year of Disabled Persons" Sept. 17 at the Indiana Therapeutic Recreation State Workshop at Bradford Woods, Martinsville, Ind.

DEPARTMENT OF SPEECH AND DRAMATIC ART

MICHAEL J. PORTER, assistant professor of radio-TV-film, had his article, "The Grande Syntagmatique: A Methodology for Analysis of the Montage Structure of Television Narratives," accepted for publication in the Southern Speech Communication Journal.

Porter also presented a paper entitled "The Montage Structure of Adventure and Dramatic Primetime Programming" at the national convention of the Speech Communication Association in Anaheim, Calif., on Nov. 14.

EDWARD S. SMALL, associate professor of radio-TV-film, had his essay on "East of Eden" recently published in the book entitled The Novel Into Film, edited by F. Magill (Salem Press: Pasadena, 1980), 126-128.

Small's interview, "Teaching Film in China: an Interview with Zhu Yujan," was published in the Journal of the University Film Association (Vol. 33, Number 4, Fall 1981), pp. 57-60.

COLLEGE OF VETERINARY MEDICINE

SUE SPAULDING, animal health technician, attended the 93rd Annual California Veterinary Medical Association meeting and a scientific seminar for animal health technicians Oct. 28-31 in San Francisco.

M.E. TUMBLESON, professor of anatomical physiology, presented "Alcohol Metabolism: A Holistic Perspective" at a seminar in East Lansing, Mich., Oct. 28-30.

DONALD BLENDEEN, professor of veterinary microbiology, presented "Epidemiologic and Diagnostic Features of Rabies" and "Epidemiology of Zoonoses" at a seminar Oct. 29-30 at Ohio State University.

ANN KIER, assistant professor of veterinary pathology, presented "Sporotrichosis in the Cat: Animal Model" at Southwest Medical School in Dallas, Texas.

GARY OSWEILER, professor of veterinary pathology, and LAWRENCE G. MOREHOUSE, professor/director of veterinary medical diagnostic laboratory, attended the annual meeting of the U.S. Animal Health Association on Oct. 13 in St. Louis.

Osweller presented "Effects of T-2 Toxin in Cattle" and Morehouse presented "Mycotoxins—Their Toxicology and Principal Lesions" at the meeting.

Zone parking

from page 1

the area in which we experience our greatest number of daily problems," said Joy. "If we are going to run a trial, we should run it where there are problems so we can see if the plan helps to solve them."

In the proposed zone area, 17 of the 18 lots are over-assigned. Over-assignment in these lots ranges from 7-percent in WC2, the lot south of Physics, to 43 percent in WC7, west of Tiger Towers. But by combining all 18 lots into one zone, the over-assignment for the entire area is an average of 25 percent.

"A 25 percent over-assignment is an acceptable average for a faculty/staff lot," says Joy, "because the faculty have flexible schedules and will not all need the space at the same time. However, support staff lots frequently run into difficulty if over-assigned by 10 percent because so many of them have 8 to 5 schedules.

"The lot at Tiger Towers is able to handle 43 percent over-assignment only because there are so many extension personnel who are only on campus a few days per week," says Joy.

"Traffic flow problems would adjust within a few months once persons become familiar with where there will probably be a parking space at a given time during the day," says Joy.

Individuals with physical handicaps or other health-related problems will still be given priority parking in the area most convenient to them, says Joy.

MERL RAISBECK, resident veterinarian, and GEORGE ROTTINGHAUS, assistant professor of anatomy physiology and veterinary medical diagnostic laboratory, attended the American Association of Veterinary Laboratory Diagnosticians meeting held Oct. 10-13 in St. Louis.

Raisbeck presented "An Episode of Monensin Intoxication in Pastured Calves" at the meeting.

ROBERT McCLURE, professor and interim chairman of veterinary anatomy-physiology, attended the Midwest Anatomist Association meeting Oct. 30-Nov. 1 in Toledo, Ohio. McClure also served as chairman of one of the sessions.

If the trial period proves successful in handling the parking problems, the Campus Parking Committee will consider expanding the zone system.

"The simplest scheme would be to have only one zone for the entire campus," says Guy Schupp, committee chairman and associate professor of physics.

"The flexibility of this scheme is obvious," says Schupp, "but it is unclear what the magnitude of possible drawbacks would be."

Another possibility would be to divide the campus into four or five major parking zones, based on the number of employees in an area and the parking areas accessible to those persons.

The trial zone proposal will be presented to Vice Chancellor for Administrative Services Ria Frijters for her approval before its is placed into effect.

The Campus Parking Committee is soliciting comments from faculty, staff, students and administrators concerning the zoning proposal, especially from persons who have had experience with zone parking. Please contact Schupp at 418 Physics, 882-2738, or any of the following committee members:

- George Jesse, assistant professor of animal husbandry;
- Alfred Jones, librarian, engineering/math;
- Verna Rhodes, assistant professor of nursing;
- Marjorie Jackson, executive staff assistant, Engineering Dean's Office;
- Henry Tharp, supervisor, stage services;
- Toni Critton, student, and
- Mark Weintrub, student.

Job listings

Faculty openings

The following teaching and research positions are available at the University; however, all of the positions are dependent upon funding and enrollment. For more information, call the Office of the Associate Provost, 116 Jesse, 882-2094.

Associate professor of anatomy in the School of Medicine, to begin July 1, 1982, to teach gross anatomy or histology; interests directed toward molecular neurobiology, neuroendocrinology and/or cell biology; new instrumentation will be available in the form of transmission and scanning electron microscopes, core radioimmunoassay and immunocytochemical laboratories, tissue and organ culture facilities; fully staff histology and chemistry units; deadline March 1, 1982.

Assistant professor of anatomy in the School of Medicine, to begin September 1, 1982, to teach gross anatomy or histology; interests directed toward molecular neurobiology, neuroendocrinology and/or cell biology; new instrumentation will be available in the form of transmission and scanning electron microscopes, core radioimmunoassay and immunocytochemical laboratories, tissue and organ culture facilities; fully staffed histology and chemistry units; deadline July 1, 1982.

Assistant, Associate or full Professor in the College of Engineering, available Aug. 23, 1982, teaching at the undergraduate and graduate levels, student advising, directing and developing undergraduate laboratories, and engaging in research activities. Must have earned doctorate in Electrical Engineering with specialization in computer engineering, circuits, electronics or power engineering; combination of these areas preferred; deadline March 15, 1982.

Associate professor or professor of health services management in the School of Medicine/School of Health Related Professions, to begin March 1, 1982, to teach graduate and undergraduate courses, teach in extended degree executive development adult learning program, maintain strong research program in health services management or health services financing and supervise graduate student research; must have doctoral degree and established record in teaching and research, competencies and recognition in health services management or health services financing, eligible for membership on doctoral faculty; deadline Jan. 31, 1982.

Assistant professor of accountancy in the College of Business and Public Administration, to begin August, 1982, to teach accountancy subjects, research and serve; must have Ph.D. in accountancy with some evidence of teaching and research competence; applications taken until position filled.

Assistant or associate professor of advertising in

the School of Journalism, to begin August, 1982, to teach advertising and public relations courses; professional experience and M.A. degree required, Ph.D. desirable; deadline not specified.

Research associate in the School of Forestry, Fisheries and Wildlife, to begin Jan. 1, 1982, to monitor population of ruffed grouse, woodcock, songbirds and small mammals on a 3,000-acre area in central Missouri, trap and mark a variety of wildlife species, conduct studies on animal movements and habitat use, participate in project planning, analyze data and write reports and technical articles relating to forest management; M.S. in wildlife biology or closely related field required, experience in conducting field studies and manuscript preparation strongly recommended, ability to perform strenuous outdoor work an asset; deadline Jan. 1, 1982.

Staff openings

The following job openings at the University were approved and posted Monday, Dec. 7, and include the department where the vacancy exists.

The openings are listed under the name of the Personnel recruiting staff member handling the positions. For more information or to apply for a job, contact the appropriate recruiter at the Personnel Office, 309 Hitt St., at 882-4221.

GWEN DIXON TECHNICAL/RESEARCH

Pre-school aide, Child & Family Development; Assistant manager, programming & promotion, KOMU-TV; Chief animal technician, Animal Science; Computer programmer/analyst I, UMca Accounting; Library clerk II, Library.

Microbiologist, Veterinary Diagnostic Laboratory; Reactor operator, Research Reactor-UMca; Regist. medical technologist, Veterinary Pathology; Research laboratory technician, Plant Pathology.

Sr. computer programmer/analyst, Information Systems-UMca; Sr. graphic artist, Academic Support Center; Sr. reactor operator, Research Reactor-UMca; Sr. research engineering technician, Research Reactor-UMca; Sr. research/laboratory technician, Child Health; Sr. Research/laboratory technician, Pharmacology; Sr. research/laboratory technician, Agronomy; Sr. research/laboratory technician, Medicine/Immunology; Sr. research/laboratory technician, Physiology; Sr. research/laboratory technician, Physiology.

Sr. systems analyst, Information Systems-UMca; Staff nurse, Student Health Services; Supervisor, soil testing laboratory, UED-Soil Testing; Research specialist, Microbiology; Sr. research laboratory technician, Plant Pathology; Data entry operator, KOMU-TV.

FRAN WARREN

ADMINISTRATIVE/CLERICAL SUPPORT Secretary, Conferences & Short Courses; Secretary, Ext.-Information; Secretary, English;

Secretary-stenographer, Student Financial Aids.

Sr. clerk, KOMU-TV Station; Sr. clerk typist, Engineering, Dean's Office; Sr. receptionist, Counseling Service; Sr. stenographer, Agriculture Economics; Sr. stenographer, Romance Language; Sr. stenographer, School of Nursing; Sr. secretary, Learning Center; Sr. secretary, Health Services Management; Secretary, Medicine/Immunology.

CHARLES HUNTER ADMINISTRATIVE/PROFESSIONAL

Assistant director, Residential Life-Programs/Residential Life; Coordinator development, Development; Coordinator, Interior Design/Facilities Management; Editor, University Relations-UMca.

Food service supervisor I, Residential Life; Food service supervisor II, Memorial Union; Greens superintendent, Business Operations Office; Manager, Accounting Medical School/School of Medicine.

Radio producer, news, Broadcast Media; Dir., affirmative action & staff relations, Pers. Ser./Staff Relations-UMca.

JANE CORREIA CLERICAL

Clerk, Student Health; Clerk typist, Office of Research.

CAROL WAITS PART-TIME

Clerk (10am-12pm, 10 hrs. per wk.) School of Medicine; Clerk typist II (8 a.m.-12 p.m., 20 hrs. per wk.), School of Nursing; Secretary-UMca (Full time-temp. end. 5-82), Food Purchasing; Secretary-UMca (20 hrs. per wk. temp. effec. 1-82) Business Policy & Procedures.

Secretary stenographer (1pm-5pm, 20 hrs. per wk.), Student Dev.; Sr. research/laboratory technician (Full time, temp. end 11-82), Agronomy; Staff nurse (20 hrs. per wk., temp. end 11-82), Child Health; Stenographer (8am-12pm, 20 hrs. per wk.), Student Development.

The following jobs were listed by the Hospital and Clinics' Personnel Office. For more information, call 882-8186.

MARY DAVIS ADMINISTRATIVE/PROFESSIONAL

Assistant Hospital Plant Engineer-Plant Engineering; Dietitian-Nutrition and Dietetics; Manager-Hospital Promotions and Development; Manager-Hospital Security; Manager-Patient Accounts; Pharmacist-Pharmacy; Radiation Physicist-Radiology; Supervisor-Hospital Business Office.

PATTY SCOTT CLERICAL

Administrative Secretary-Nursing Administration (Shorthand); Admissions Clerk-Admissions 11-7; Chief Accounting

Clerk-Patient Accounts; Secretary-Patient Referral Services; Secretary-Radiology; Senior Clerk Typist-Pathology; Senior Receptionist-Personnel.

ANN NADLER CLERICAL

Unit Staff Assistant-Nursing.

GINA KINCAID/JO GROVE NURSING (882-8701)

Assistant Director-Nursing (1); Clinical Specialist-Nursing; Head Nurse-Nursing (7); Nurse Anesthetist-Anesthesiology (4); O.R. Technician (2); Licensed Practical Nurse-Nursing (15); Staff Nurse-Nursing (26).

ANN NADLER SERVICE

Instrument Technician-Operating Room.

STEVE SCOTT TECHNICAL

Certified Respiratory Therapy Technician-Respiratory Therapy; Chief Radiation Therapy Technician-Radiation Therapy; Histologic Technician-Histology; Pharmacy Technician-Pharmacy, Evenings and weekends.

Physical Therapist-Rusk (2); Physical Therapist-Physical Therapy; Radiologic Specialty Technician-Radiology (2); Radiologic Technologist-Radiology.

Registered Medical Technologist-Microbiology Laboratory (2); Registered Medical Technologist-Pathology-Blood Bank (4); Registered Medical Technologist-Pathology.

Registered Respiratory Therapist-Respiratory Therapy (2); Senior Programmer Analyst-Computer Center (3); Senior Registered Respiratory Therapist-Respiratory Therapy; Senior Research Laboratory Technician-Neonatal Laboratory, Nights.

PART-TIME/TEMPORARY

Admissions Clerk-Admissions (3); Assistant Director-Nursing (1); Chief Clerk-Nursing (2); Clerk II-Plant Engineering-Temp.; Clerk Typist II-Nursing.

Health Care Equipment Attendant-Equipment Pool (2); IV Nurse (3); Hospital Unit Clerk-Nursing; Nurse Technician-Nursing Service (4).

OR Technician-Nursing OR; Secretary-Nursing/Personnel; Senior Licensed Practical Nurse-Nursing (22); Senior Programmer Analyst-Computer Center, Temp.; Staff Nurse-Nursing (62); Student Assistant-Nursing (14); Supervisor-Housekeeping (1).

ANN NADLER TECHNICAL

Pharmacy Technician-Pharmacy.

KEN KUSCHEL ADMINISTRATIVE

Supervisor-Housekeeping.

This Week

To list your department or division's events in the next **Mizzou Weekly**, write or call the Office of Internal Communication, 606 Maryland, 882-6004, by Friday two weeks before the event is scheduled.

All events are free and open to the public unless otherwise noted.

11 Friday

Visitor and Guest Relations Holiday Open House: Open to all students, staff, faculty and the community, 3 to 5 p.m., 103 Swallow Hall on Francis Quadrangle.

Women's Basketball: Mid-America Classic: University of Alabama, Memphis State and Idaho State, 6 and 8 p.m., Hearnes Center. Tickets \$3 General Admission, \$1.50 Students.

Wrestling: Mizzou vs. SIU Carbondale, 7:30 p.m., Hearnes Center. Tickets \$2 General Admission, \$1 Students.

MSA Film: "Airplane," 7 and 9:30 p.m., Jesse Aud. Tickets 75 cents in advance, \$1 at door.

University Theatre: "Buck 'n' the System," 8 p.m., Fine Arts Bldg. Tickets \$4 by mail or from Theatre Box Office.

12 Saturday

Stop Day Graduate School Convocation: 10:30 a.m., Jesse Aud.

Public and Community Service Convocation: 10:30 a.m., Memorial Union Aud.

Women's Basketball: Mid-America Classic, 5 and 7 p.m., Hearnes Center. Tickets \$3 General Admission, \$1.50 Students.

Engineering Convocation: 7 p.m., Jesse Aud.

Men's Basketball: Mizzou vs. Baylor, 9 p.m., Hearnes Center. Tickets \$5, \$4.50 and \$3.50. General Admission, \$3 and \$2 Students.

Simultaneous Chess Exhibition: By Missouri State Champion Michael Brooks, 11 a.m. to 4:30 p.m. Daniel Boone Regional Library. Sponsored by UMC Chess Club.

13 Sunday

Gymnastics: Mizzou vs. Denver University, 1:30 p.m., Hearnes Center. Tickets \$2 General Admission, \$1



Folktales from the new book *It's Good to Tell You: French Folktales from Missouri* will be presented by author Rosemary Hyde Thomas at a holiday party at 1:30 p.m., Sunday, Dec. 13 in the Museum of Art and Archaeology. The book's original drawings, including the one above, by Robert W. Thomas will also be on display.

Students.

Holiday Afternoon: "It's Good to Tell You, French Folktales from Missouri," will be shared in part by author Rosemary Hyde Thomas; book's original drawings by Ronald W. Thomas on display, 1:30 p.m. Pickard Hall.

University Choral Ensembles and Brass Choir: Duncan Couch and Betty Scott, conductors, Christmas Prelude: "Christmas Cantata," and "Songs of Joy," 3 p.m., Jesse Aud.

Percussion Ensemble: Frank Krager, director, 8 p.m., Fine Arts Recital Hall.

14 Monday

Final examinations begin.

Microbiology Seminar: "Cloning of the Reovirus Genome," Geoffrey Hudson, Dept. of Microbiology and Immunology, Duke University Medical Center, Durham, N.C., 10:40 a.m., M-640 Medical Sciences Bldg.

Multidisciplinary Seminar in Aging: "The Evaluation of Long Term Care Social Service in Texas: One Researcher's Perspective," Bernice Halbur, fellow, Family and Community

Medicine, 12 noon to 1:15 p.m., bring your lunch, S-16 Memorial Union.

Microbiology/Medical Seminar: "Lymphocyte Differentiation and Susceptibility to Murine Leukemia Virus-Friend," Dale Isaak, Dept. of Microbiology, Kirksville School of Osteopathic Medicine, Kirksville, Mo., 1:40 p.m., M-640 Medical Sciences Bldg.

University Chess Club Meeting: 7 p.m., call 882-4947 for location.

English Lecture: "Having Your Cake; or Second Thoughts on Henry James's 'The Birthplace,'" Leon Dickinson, UMC professor of English, 7:30 p.m., Memorial Union Aud.

15 Tuesday

Wrestling: Mizzou vs. SIU Edwardsville, 7:30 p.m., Hearnes Center. Tickets \$2 General Admission, \$1 Students.

16 Wednesday

Board of Curators Meeting: On UMC campus.

17 Thursday

Board of Curators Meeting: On UMC campus.

Women's Basketball: Mizzou vs. UCLA, 7:30 p.m., Hearnes Center. Tickets \$2 General Admission, \$1 Students.

18 Friday

Mo. Institute of Psychiatry: "Clinical Follow-up and Genetic Findings in the 'Iowa 500,'" George Winokur, Dept. of Psychiatry, University of Iowa, 1 p.m., Kohler Building Aud., 5400 Arsenal St., St. Louis.

Home Economics Convocation: 4 p.m., Ellis Aud.

Forestry, Fisheries and Wildlife Convocation: 7:30 p.m., Memorial Union Aud. Reception following in N214-215.

19 Saturday

Nursing Convocation: 2 p.m., Jesse Aud.

Law Convocation: 2 p.m., Memorial Union Aud.

Journalism Convocation: 3 p.m., Gannett Hall.

Business and Public Administration

Convocation: 5 p.m., Jesse Aud.

Tangerine Bowl: Mizzou vs. Southern Mississippi University, 8 p.m. eastern, 7 p.m. central, Orlando, Fla.; T.V. viewers: KOMU-TV, Columbia; KSHB, Kansas City, Channel 41, formerly KMBK; KPLR, St. Louis; KOLR, Springfield; and KTVJ, Joplin.

Fall semester ends at close of day.

20 Sunday

No events scheduled.

21 Monday

University Chess Club Meeting: 7 p.m., call 882-4947 for location.

Men's Basketball: Mizzou vs. Youngstown State, 8:05 p.m., Hearnes Center. Tickets \$5, \$4.50 and \$3.50 General Admission, \$3 and \$2 Students.

22 Tuesday & 23 Wednesday

No events scheduled.

24 Thursday

Floating holiday, University closed.

25 Friday

Christmas holiday, University closed.

Exhibits

Museum of Art and Archaeology: "Buddhist Treasures from Gandhara," a major exhibit of stone and stucco sculpture, coins and jewelry from ancient Gandhara.

Exhibit continues through Dec. 13. Hours are noon to 5 p.m. daily; Museum closed Mondays and holidays.

Museum of Art and Archaeology: "It's Good to Tell You: French Folktales from Missouri," drawings by Ron Thomas illustrating a collection of Creole folktales. Exhibit continues through Dec. 13, noon to 5 p.m., daily; closed Mondays and holidays.

Fine Arts Gallery: "In Between The Other Side of Both," an exhibition of works by Keith Angsten, master of fine arts candidate, will open at 2 p.m., Sunday, Dec. 13, in the UMC Fine Arts Gallery. The exhibit of sculpture and drawings will run from Dec. 13 through Dec. 18.

Health office issues rules to ensure happy holidays on campus

The arrival of the holiday season means not only that the time has come once again to decorate our office and lab halls with boughs of holly, spruce, fir and pine, but is also time to review the safety procedures from the Environmental Health Office regarding the decorating of University offices, dormitories and apartments.

Be sure to select a tree that is not dried out. Falling needles and dried resin on the bottom of the tree trunk are good indicators that the tree is dried out. There is no objection to decorating with boughs or trees of spruce, fir or pine. However, no cedar trees or boughs will be used due to cedar's fast drying nature.

After purchasing the tree, try to keep it outside and in water until inspection by the University has been made, allowing the tree to begin absorbing water to delay the drying process.

All trees to be set up in University buildings are to be inspected by the

University Physical Plant Department, except artificial trees approved as flame retardant. In order to have a tree inspected, it should be taken to the east side of the General Service Building between 9 a.m. and 3:30 p.m., Monday through Thursday, through Dec. 17. If the tree needs to be sprayed with a fire retardant material, the Physical Plant Department will do this at the time of the inspection without cost.

If trees are brought in early in the day, they can be picked up by 3:30 p.m. the same day. Trees brought in later, but before 3:30 p.m., can be picked up the following day after 9 a.m. Trees left overnight for spraying and inspection will not be the responsibility of the Physical Plant Department. Special requests for inspection and spraying at times other than the designated days and times cannot be granted due to the extra costs involved.

All trees inspected will be tagged at the time of inspection. University janitors and custodians will report to the Physical Plant Department all trees which do not have an inspection tag.

When setting the tree up inside, saw approximately one inch off the bottom of the tree at an angle. Place the tree in a sturdy, broad-based stand which will hold water. Be sure to keep water in the stand at all times.

Never place the tree near a radiator, stairway, exit or in any location where the tree, whether standing or fallen, would block an escape route from the building.

Be sure light wires from the tree and other decorations are not frayed. Do not run wires through doorways because doors can fray the wires. Do not overload electrical circuits by putting too many strings of lights on the tree. Under no circumstances are

real candles to be used on Christmas trees.

Never leave tree lights on unless there is someone in the area where the tree is located or someone can see the entire tree at all times.

Christmas tree lights are not to be used on metallic trees due to the danger of electrocution.

If evergreen boughs are to be used for decorations, they also must be inspected and sprayed.

No particular time is recommended for setting up Christmas decorations. However, keep in mind that even with spraying the tree and keeping the stand full of water, the danger of fire increases each day the tree is up. All trees should be disposed of before the Christmas vacation begins, except in Family Student Housing, if the apartment will be occupied.

For more information, please call 882-7018.

University Libraries
University of Missouri

Digitization Information Page

Local identifier MizzouWeekly(print)

Source information

Format Newspaper
Content type Text with images
Source ID Duplicate copies University Archives weeded out
Notes

Capture information

Date captured July-December, 2022
Scanner manufacturer Plustek OpticBook
Scanner model A300 Plus
Scanning system software Book Pavilion
Optical resolution 600 dpi
Color settings 8 bit grayscale for majority of pages;
 24 bit color for color illustrations/portraits/photographs
File types tiff
Notes

Derivatives - Access copy

Compression Tiff: LZW compression
Editing software Adobe Photoshop 2022
Resolution 600 dpi
Color same as captured
File types pdf created from tiffs
Notes Images cropped, straightened, and brightened.