

# MIZZOU

W E E K L Y

University of Missouri - Columbia / Sept. 23, 1992

## ON THE INSIDE

Page 3 The MU Retirees Association will hold its fall meeting Sept. 26 at the Reynolds Center.

Page 4 Coach Bob Stull says the football Tigers are young and hungry this year.



## Other voices

*Columbus quincentennial is designed to reflect a variety of viewpoints.*

For decades, the U.S. education system cast Christopher Columbus as a hero, the "discoverer" of America and the pioneer of growth, development and expansion on the continent. In recent years, however, other perspectives have come to the forefront: the fact that the American Indian population was decimated to make room for the expansion, and that within a century, African slaves were brought in to do much of the work.

MU's Columbus quincentennial observance, which reaches its peak in the next few weeks, is designed to reflect those diverse viewpoints and to stimulate discussion, says Kit Salter, professor and chairman of geography and chairman of the 18-member Columbus quincentennial committee. "We want to let those other voices be heard," he adds.

Salter points to the Paine Lectures Series in Religion, scheduled Oct. 7 through 9 in Hulston Hall, as a good example. Five scholars of American Indian religious traditions will present viewpoints on the theme "Columbus, Colonialism and the Consequences for Religion." "An event of this type is rare," Salter says.

The next week, 125 scholars will be on campus for the Hispanic Literature Conference, scheduled Oct. 15 through 17 at the Reynolds Center and the Memorial Union. This is an annual meeting that will be at MU for the first time, Salter points out. As part of the conference, Peruvian author Mario Vargas Llosa will present the 1992 Enid Jackson Kemper Lecture at 7:30 p.m. Oct. 16 at the Ramada Inn. Vargas Llosa's *The War of the End of the World* won the Ritz Paris Hemingway Award, and the hardcover edition of *Aunt Julia and the Scriptwriter* went into four printings.

Another highlight is a Latin American film series that will be shown at 2 p.m. at the Museum of Art and Archaeology. Films include *Bye Bye Brazil*, Sept. 27; *Frida*, Oct. 11; *The*

*Official Story*, Oct. 25; and an exhibition, *Short Films from Latin America*, which examines relationships between the sexes and among the races, along with the environment, the church, the military and politics.

In addition, the annual West Lakes Geographers Meetings will be on campus Oct. 9 through 12; the 27th annual Mid-America Linguistics Conference, with the theme "Endangered Native American Languages," will be at the Memorial Union Oct. 16 through 18; and there will be a number of special art exhibits and musical performances. *Mizzou Weekly* will run a complete schedule later.

One of the most intriguing events will not be open to the public. "My wife, Cathy, and I have a pond in back of our house that we have named 'Columbus pond,'" Salter says. "Shortly after midnight on Oct. 12 — 500 years to the exact hour that Columbia set foot on the continent — three of us are going to row across the pond. A number of friends will be on hand, some portraying Native Americans, some portraying European settlers. It should be interesting."

Never mind the fact that tickets won't be sold for the landing re-enactment. There are plenty of other events, Salter notes.

"Christopher Columbus placed in motion one of the most powerful set of changes the world has ever known," he says. "These changes need to be discussed."

## Past perfect

*Anthropology museum is a valuable resource for campus, community.*

When it reopened last fall after a six-year hiatus, the Museum of Anthropology in Swallow Hall had a completely new look. The museum had been rebuilt from top to bottom, with everything from new display cases to a modern climate control system.

With that job completed, a new curator is working to rebuild museum programs that reach out to the campus and the community. Molly O'Donnell took over in August as curator, and one of her first goals is to get out the word that the museum has reopened.

"I want to build a strong outreach program for the community and the public schools," she says. "At the same time, we're definitely interested in working with faculty members on campus who want to include us in what they're doing. We want faculty to know we're here and are a useful resource."

Ruth Brent is one faculty member who took O'Donnell up on her invitation. Brent, professor and chairwoman of environmental design, brought her upper-level housing concepts class to the museum so students could see how visual images are used to represent housing of the past.

"I think the museum has done a remarkable job in the quality of the exhibitions, especially the lighting and the way the viewer is engaged. It's quite professional," Brent says.

For instance, one featured exhibit in the museum is a reconstructed Euro-American cabin, modeled after frame structures that were found in northeast Missouri. The exhibit is complete with the furniture and personal effects a family of that time and place would have owned.

Another featured exhibit is a reconstruction of an archaeological excavation, along with the tools that field workers use to peel back layers of the past. Only a small fraction

of the 150 million items in the collection is on display at any time. The rest is stored in 20,000 cardboard cartons, housed in three buildings at Sinclair Farm.

"We have a strong collection of Missouri archaeology, easily one of the best in the state," O'Donnell says. Another strength of the museum is its collection of American Indian artifacts. In addition, the museum is the only repository for historic artifacts in the state, and works under contract with agencies such as the U.S. Army Corps of Engineers and U.S. Forest Service.

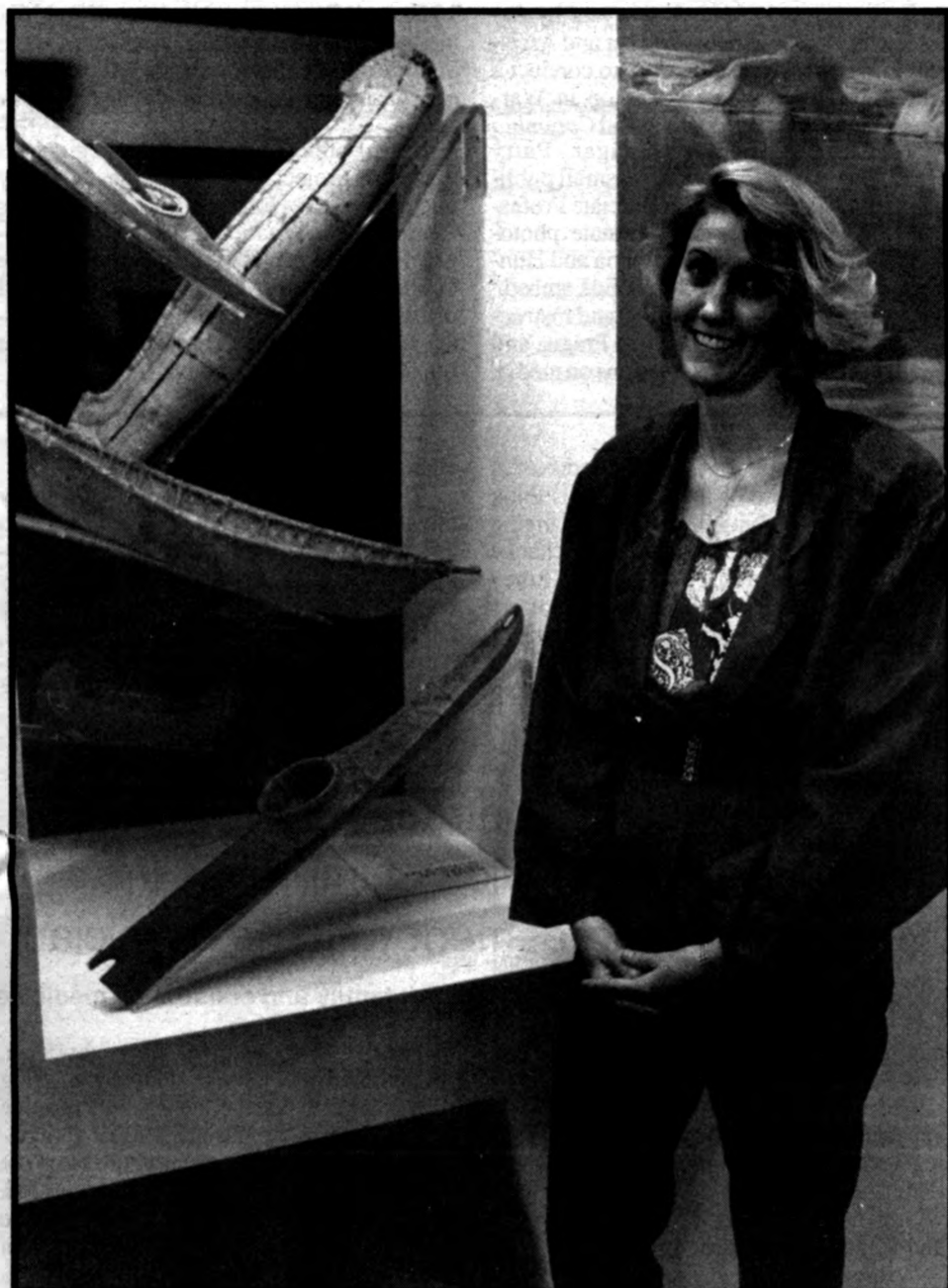
The exhibits trace life in Missouri from prehistoric times. There are flint points and rock tools, pottery from the Mound Builder era and buckskin tunics. Tucked against one wall is a wooden pirogue, trade blankets and a musket used by early fur traders. There's even a wardrobe worn by a latter-day dandy, with beaver felt hat, dueling pistol and a snakeskin-wrapped walking stick.

Not all the items are from Missouri. A collection of kachina dolls from the Southwest fills one corner of the exhibit area. Also on display are selections from the Grayson Collection, a 5,000-piece collection of bows, arrows and quivers from around the world.

Much of the extensive renovations to the museum were a labor of love by former associate curator Tom Holland. As a doctoral student in anthropology, Holland put in long hours at the museum, tackling projects like floor and ceiling repairs and putting together exhibits.

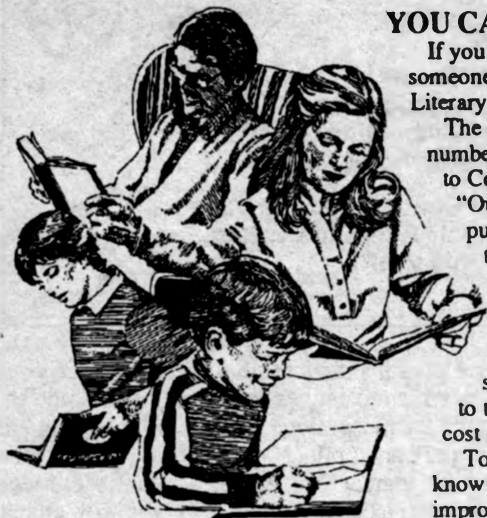
"We want people to know we're here, not just as a resource but for the enjoyment of it all," O'Donnell says. "It's free and it's a great place to bring the kids."

The Museum of Anthropology is open from 9 a.m. to 4 p.m. Monday through Friday. This fall, the museum will be open from 9 a.m. to 1 p.m. on home football Saturdays.



Museum Curator Molly O'Donnell received a bachelor's degree in art history from MU and a master's in art history from Columbia University. Before coming to Mizzou, she worked in art extension at the University of Massachusetts.

Rob Hill photo



### YOU CAN LEND A HAND

If you'd like to teach someone to read, or if you know someone who cannot read and needs assistance, the Literary Action Corps can help.

The corps, a group of volunteers that includes a number of Mizzou faculty and staff, offers free tutoring to Columbia area adults who are functionally illiterate. "Our tutors care about people," says Peggy Hogan, publicity chairwoman and an animal surgical technician at the School of Medicine. "It is teaching in its truest sense — you don't receive any pay, but you feel good afterward."

A training session for tutors will be from 6:30-9:30 p.m. on Sept. 24, 29 and Oct. 1. A separate program will be offered for those wanting to tutor speakers of other languages. There is a \$10 cost for materials.

To register, call 474-8768. Or call that number if you know someone who cannot read or who wants to improve his or her reading skills. Tutors normally meet once or twice a week with their students at a neutral site, such as a public library.

### UNITED WAY KICKOFF SEPT. 29

The University will announce its United Way goal for 1992-93 at the campaign kickoff, at 7:30 a.m. Sept. 29 in N214-215 Memorial Union.

About 70 MU volunteers, including regional, district and unit chairmen and chairwomen, are encouraged to attend. The campaign runs through Nov. 6.

The University effort is a major part of the Columbia Area United Way campaign. Last year, Mizzou surpassed its goal of \$218,291.



## Extension task force completes its work

One University System task force has completed its work and another will continue its duties through October, the Board of Curators was told Sept. 17.

Board President John Lichtenegger, of Jackson, Mo., said the task force appointed to study University Extension has sent its report to George Russell, UM System president. Russell

added that the task force studying medical education in Missouri has begun meeting and will continue to meet through October. The goal of the panel, he added, is to ensure better cooperation between University Hospital and private hospitals in mid-Missouri.

The board held a one-day meeting in Wappapello, Mo. In other news:

■ Russell told the board that he had visited with educators and parents in Sikeston, Mo., and Mountain Grove, Mo., to explain the UM System's new admission requirements. A total of 11 more meetings are planned at schools around the state, he added.

■ Russell reported that private giving to the UM System was up 27 percent in fiscal

year 1992, to a total of \$44.7 million.

■ Lichtenegger proposed that the curators examine programs that have produced an average of one or fewer graduates per year over the past five years. Richard Wallace, vice president for academic affairs, said the UM administration is preparing a review of programs.

■ The board welcomed Charles Kiesler, MU's next chancellor, who attended his first meeting and will take office on Nov. 1.

## Mizzou faculty lend expertise to Eastern European journalists

Four faculty members traveled to Budapest earlier this month to teach Eastern European journalists some of the nuances of Western journalism. It was the latest in a series of teaching visits to newly democratic countries by MU journalism faculty.

"Our expertise, our interest in these areas and our resources allow us to do this type of work as no other university can," says Dean Mills, dean of journalism. "We really are the global center for journalism."

In the most recent visit, Professor Daryl Moen led an advertising-design team that conducted a workshop at Eotvos Lorand University in Budapest. Other members were Associate Professor Birgit Wassmuth, Assistant Professor Jan Colbert and Instructor Fritz Cropp.

"The goal was to bring the participants at least 20 years forward in their professional development," Moen says. "Even for Eastern European newspapers that have fairly

good technology, the journalists need to learn more about how to use that technology effectively."

Earlier visits were made this year by Associate Professor Charles Warner and Assistant Professor Lena Sadiwskyj, to conduct a television broadcasting workshop in Warsaw; by Professor Byron Scott and Columbia Missourian General Manager Patty Hoddinott, to give a seminar on small publications in Krakow; and by Associate Professor Bill Kuykendall, to coordinate photojournalism workshops in Bulgaria and Hungary. Later this month, Professor Ed Lambeth, Assistant Professor Sandy Scott and Instructor Tim Gallimore will travel to Prague and Bratislava to deliver presentations on media,

ethics, law and society.

The visits are being funded by a \$200,000 U.S. Information Agency grant. In addition, 15 Eastern European journalists visited MU last spring for two weeks of workshops at the School of Journalism, and three Mizzou journalism students studied in Russia this summer.

"The political turmoil in the region has made this project both challenging and very interesting," says John Heyl, director of MU's Center for International Studies and Programs, and a project co-director. "We are building strong and lasting ties with several institutions in Eastern Europe. In this importance sense, the project has had a significant impact on everyone involved."

## Correcting bad habits

### Computer program aims to help people alter their lifestyles.

The contract is drawn, and the parties involved prepare to sign the agreement. This scene, typical of everyday business at a law firm, also is becoming common at the offices of a growing number of physicians. In this setting, the parties agreeing to the contracts are patients who seek to stop smoking, lose weight or otherwise improve their health habits and lifestyles.

"Studies have shown that if an individual writes a contract saying, 'I am going to change my behavior,' it improves the effectiveness of the agreement with the physician, especially if there is a witness," says Daniel Vinson, assistant professor of family and community medicine. "Contracts are clearly more effective than a physician's oral warning to change a bad habit or lifestyle."

A new computer program created by Vinson and his colleagues at the School of Medicine is challenging problem drinkers who may be headed for alcoholism to curb or eliminate their alcohol consumption by making a written agreement with themselves and their physicians.

At MU, the targets of change are people classified as hazardous and problem drinkers. This group includes 10 to 20 percent of

the entire population, Vinson says, those who don't drink enough to be diagnosed as alcoholics but do go beyond moderation. "Problem drinkers" may consume a lot of alcoholic beverages and sometimes get into trouble because of their drinking. "Hazardous drinkers" are those heading toward alcohol-related troubles. "There is no clear line except between teetotalers and alcoholics," Vinson says. "It's a huge gray zone that hasn't been addressed enough."

To all adult patients who visited the MU family practice clinic this summer for any reason, Vinson offered a written quiz designed to identify hazardous and problem drinkers. If they agreed to participate in the study, those who scored high enough were assigned either to go through a new software program called PACT (Programmed Alcohol Contracting Tool) or to be a control subject who receives only oral counseling about the problem. Patients will be followed up after one month and six months to see if and how their behavior has changed.

PACT is simple to use and impersonal enough to be non-threatening, Vinson says. Patients are asked to indicate on a sliding scale how much of a problem alcohol is in their lives, what others think of the situation, and how much they are ready to change.

Based on the responses, PACT directs users to do one or more of three things: 1. think about their problem; 2. plan for changing their behavior and/or; 3. take action to change how much they drink. For example, if they are ready to take action, the program offers them options ranging from keeping track of their drinking to stopping drinking for a specified number of weeks and/or attending an Alcoholics Anonymous meeting.

Users agree to reward themselves for com-

change my behavior a little at a time."

The use of contracts also may help family physicians. Because a doctor must try to ascertain a variety of health-threatening behaviors in a short span, some problems may not surface and therefore may not receive attention. An article in the Feb. 5, 1992, edition of the *Journal of the American Medical Association* confirmed that alcohol abusers generally do not receive needed counseling about their problem from physicians.

**'If an individual writes a contract saying, "I am going to change my behavior," it improves the effectiveness of the agreement with the physician'**

— Daniel Vinson, assistant professor of family and community medicine

pleting the conditions. They can choose one of the computer's suggestions such as going out to eat or custom-make a reward that appeals to them. The program ends by printing a contract describing the agreement and listing the names of the parties involved, with signature lines for the patient, physician and perhaps a concerned loved one.

Vinson cites the example of one male patient in his 50s who had never previously addressed his problem. After talking about it with the doctor and with his wife, the patient decided to participate. "For him, it's an empowering thing because he can go through it and make choices," Vinson says. "He can say, 'I don't have to be bound by this. I can

Henry Domke, a Jefferson City physician, collaborated in the MU study by offering participation to patients at his family practice clinic. "Clearly, the advantage is that it's identifying problems in people in whom I was not aware there was a problem," Domke says. "In the past I did contracts where I identified the problem. This program identifies the problem and in a non-threatening way."

If the study's results are encouraging, Vinson plans to conduct a full-scale, two-year trial. He says the technology also could be adapted to assist patients with smoking cessation, weight loss and other healthy changes. It could be used in a variety of settings, including student and community health centers.

## Retiree group to meet Sept. 26

The MU Retirees Association will hear David Leuthold, professor of political science, discuss "The Politics of Retirement Benefits" at the group's fall meeting Sept. 26.

The meeting will begin at 10 a.m. at the Reynolds Alumni and Visitor Center. Registration and a social period begin at 9:15, and a get-acquainted session for new retirees will begin at 9:30.

Bob Marriott, a retired University insur-

ance official, will give an update on long-term health care, and Richard Wallace, UM System vice president for academic affairs, will discuss the future of the University.

George Preckshot, president of the group, especially encourages new faculty and staff retirees to attend. "You can meet other retirees and learn about our organization," he says. "We want to introduce you to our association and to learn how we can help you."

## Building from the ground up

Although small business is the backbone of economic growth, fledgling entrepreneurs have only a small chance for survival. Experts estimate that small business start-ups face an 80 percent failure rate.

One organization in mid-Missouri is trying to turn that statistic around. This fall, the Missouri Innovation Center will open an "incubator" for small businesses at MU's Sinclair Farm. Chip Cooper, innovation center director, says the services an incubator provides — such as business counseling, low-cost office space, secretarial services and office equipment — can mean the difference between success and failure.

The success rate is nearly 80 percent for businesses that start out in an incubator. By November, a 7,400-square-foot building at Sinclair Farm will be remodeled into office and laboratory space for as many as eight tenants.

"The goal of a business incubation program is to help maximize the availability of scarce capital by keeping start-up expenses as low as possible, shorten the learning curve and help new entrepreneurs avoid unnecessary pitfalls," Cooper says.

The Missouri Innovation Center is a pri-

vate, non-profit corporation under contract with the state Department of Economic Development and affiliated with MU. It originally was established as Missouri Ingenuity Inc. Plans for the incubator have been under way for two years. For the past year, four tenants have found a home for their new businesses in a pilot incubator located near the MU Research Reactor.

One goal of the Missouri Innovation Center is to help transfer new technologies out of the laboratories of Mizzou and into the marketplace. "The research base at MU is a very important asset to our community in terms of potential business," Cooper says.

He stresses that a business incubator is more than simply a place. The program offers in-depth business counseling and can help qualified clients with financing and tax credits for their projects.

"Most importantly, incubators create an entrepreneurial community in which business owners have the opportunity to exchange expertise, information and emotional support," Cooper says. "Starting a new company can be a pretty lonely experience at times. It takes a lot of work and tenacity."

Turner Avenue garage, says Jim Joy, director of Parking and Transportation Services. His responsibility primarily is to assist campus visitors. Joy says the attendant will be on duty as needed, and initially his hours will be from 7:30 a.m. to 1:30 p.m. from Monday through Thursday, and until 12:30 p.m. on Friday. As for enforcing traffic regulations: "He will have that authority, but that's not his purpose in being there," Joy says.

## Q&A

**Q.** I see where Rush Limbaugh is scheduled to have a program on KOMU-TV. I think he's an ultra-reactionary hate monger and I'm not alone in my opinion. Why is the University supporting this sort of programming, particularly if any of the funds for this come from many taxpayers who find his message revolting?

**A.** Becky Cooper, marketing and promotion manager for KOMU, takes exception with you on two points. First things first: "Taxpayers do not support this station in any way, shape or form. In fact this station pays taxes," Cooper says. "The Board of Curators holds the broadcast license."

Second point: "There's a whole lot of people out there who don't feel that way about Rush Limbaugh. The man has 10 million people in his radio audience per hour. When we make decisions about programming, we try to air shows that our audience will want to watch and will produce ratings for our advertisers," Cooper says. "It's not our position to take a political stand. We try to present the spectrum of programming from A to Z." The Limbaugh show airs at noon weekdays.

**Q.** I park in the Turner Avenue garage, and recently I noticed that a booth has been set up at the main entrance on the third level, with an attendant on duty. Is he there to crack down on traffic violators and curb speeders?

**A.** For the past several weeks, a part-time attendant has been manning a booth in the

## FOR THE RECORD

**CORRECTION:** A photo caption in the Sept. 9 *Mizzou Weekly* gave an incorrect title for Choolwe Beyani. He is a visiting assistant professor of history.

**STAFF DEVELOPMENT AWARDS:** There is an Oct. 1 deadline for applications to be submitted for this round of the Staff Development Awards. The awards provide funding for staff members to attend courses, classes or workshops that enhance their professional or personal development.

Individual awards may not exceed \$3,500, and group awards are limited to \$7,000. Retroactive funding and certification exams will not be considered for the awards, nor will proposals that are eligible for the University's Educational Assistance or Adult Education programs. Application forms have been mailed to all eligible staff members and also are available from the Staff Advisory Council office at 319 Jesse Hall. With questions call 882-4269.

The 'For the Record' column gives MU departments and units the opportunity to advertise used or unneeded equipment for sale. There is no charge for this service. Send your notice to John Beahler at 407 Reynolds Center, or call 882-5918.

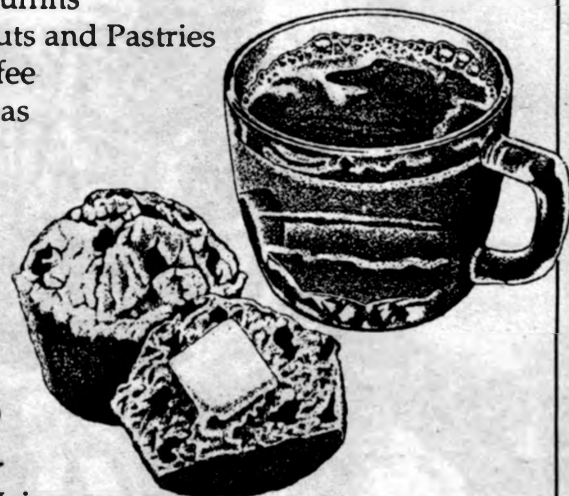
## Start your morning with continental flair at Union Cafe.

- Taste of France Strudel Sticks
- McGlynn's Fresh Croissants
- Sara Lee Jumbo Muffins
- Bakery Fresh Donuts and Pastries
- Hills Brothers Coffee
- Bigelow Spiced Teas

Available 7 to 10 a.m.  
Monday-Friday

# Union Cafe

Lower Level Memorial Union



Before



After

Lights on when you need them, off when you don't. That's how it should be.

The Energy Management Office knows that and has been installing automatic light sensors in classrooms...so lights are on when they are needed...and off when they aren't. There are even sensors that "know" how much natural light is coming into a room and can adjust indoor lighting so no light is wasted.

But most offices, classrooms and meeting rooms don't have light sensors. By working together, we can save a lot of energy (and money) by simply remembering to switch off the lights when we're done using a room...even if it's just for a short time.

By the way...like any electronic device, sometimes automatic light sensors need adjusting. This is a

quick and easy process. If your light sensor needs adjusting, call the Campus Facilities Service Desk at 882-8211.

Campus Facilities  
Energy Management  
Office...

# HUNGRY TIGERS

Football team facing difficult schedule in '92.

The football Tigers' most formidable opponent this year may be its tough schedule, Coach Bob Stull told 60 faculty and staff members at a luncheon Sept. 16.

"Of the 11 teams we face, nine had win-

ning records last year and seven went to bowl games," Stull said. MU's opponent last weekend, Texas A&M, was ranked No. 5 in the country. "They may have the best defense we'll face all year," he added. (Editor's note:

The Tigers took a 10-3 lead into the locker room at halftime against Texas A&M, but fell behind in the third quarter and lost the game 26-13.)

The 1992 Tigers are young and want to win badly, Stull said. In the first game of the season, Mizzou fell 21-0 behind Illinois, but came back and outscored the Illini in the last three quarters. The final score was 24-17. "If we hadn't made so many mistakes in the first quarter, the outcome would have been different," Stull said. "We're happy with the effort, but that's not good enough. We want to beat teams like Illinois."

He noted that the Illinois game was carried by ABC-TV, and upcoming contests against Indiana and Colorado will be nationally televised on ESPN. This marks the first time in six years that MU has played on national TV. "I think the players were a little nervous at first, but they're getting better at it."

He said the defense has been more inspired this year under new coordinator Don Lindsey. On offense, junior Phil Johnson is still starting at quarterback, but sophomore Jeff Handy is playing well, too. "The competition has been healthy for them," Stull said. "They each know that if they make a mistake, the other is waiting in the wings."

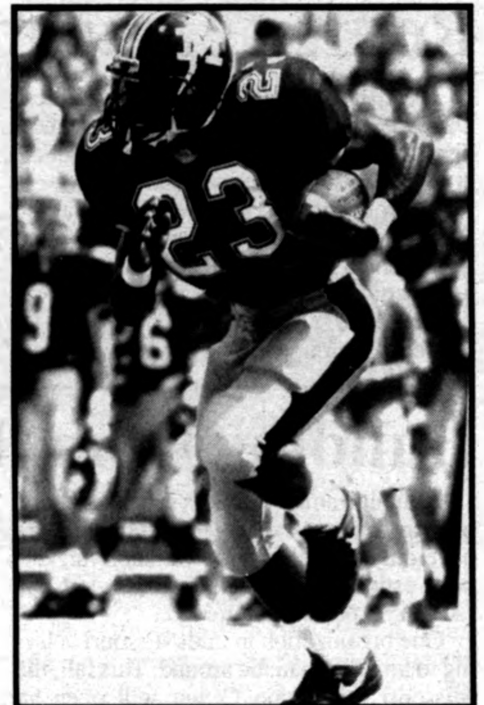
Chris Sinatra, director of the Athletic Department's Total Person Program, introduced Stull. She noted that of the 22 players who were freshmen when Stull came to Missouri, 16 will graduate this year. In addition, the football team recorded a composite 2.52 grade-point average last semester — its highest in several years — and 29 football players posted a GPA of 3.0 or higher. Four players — Mike Bedosky, Matt Burgess, Greg Dumas and Shawn Mennenga — had a 4.0 GPA last semester.

"We always hear about it when one or two good players fail to make their grades, but this is the other side of the story," Stull said. "We're really proud of these figures."

The luncheon, held at Memorial Stadium, was one of three scheduled for faculty and staff this football season. Others will be Oct. 13 and Nov. 11, and the cost is \$5. To reserve your spot, call 882-2076.

**Phil Johnson, a junior from Springfield, Mo., is beginning his second season as quarterback for the Tigers.**

Sports Information photo



Senor Maurice Benson, of Manhattan, Kan., is playing rover, a more important role in coordinator Don Lindsay's 'attack defense.'

Sports Information photo

## REMAINING HOME GAMES

- Oct. 3 Marshall
- Oct. 8 Colorado  
(Thursday night)
- Oct. 24 Nebraska  
(Homecoming)
- Nov. 14 Kansas State
- Nov. 21 Kansas

Single-ticket cost: \$17, except for Nebraska, which is \$20. Faculty-staff discounts are available on season tickets, and a discounted family plan also is available. Call 882-2386, or stop by the athletic ticket office in the Hearnes Center.

Sports Information photo

## CLASSIFIEDS

### FOR SALE

**FOUR-BEDROOM RANCH-STYLE HOUSE:** 1,550 square feet, new carpet, large yard, quiet neighborhood, gas efficiency furnace, central air, stove, refrigerator, dishwasher and more. Columbia schools, five miles to campus, \$43,500. Call Greg at 696-2629 (nights).

**VINTAGE PICTURES and frames,** piano rolls, collector plates, vintage ladies' watches and more at Booth 11, River City Antique Mall, south side, Rochepoint exit, I-70. 445-5719.

**2,900-SQUARE-FOOT** lovely home west of town. Four years old. Four bedrooms, three baths, hand-cut stone, spacious kitchen with skylight, formal dining. Highly energy efficient. \$159,900. Call Dave at 445-1061, or Jim Durand at (804) 385-7250.

### SERVICES

**COUNSELING & PSYCHOTHERAPY** — personal, educational, vocational, marital and relationship — by

appointment. Call Don Eggeman, psychologist, 449-6190, for appointment or additional information. 1205 University Ave., Suite 400.

**HOUSECLEANING WITH A PERSONAL TOUCH!** Reasonable rates, good references. Weekly, monthly, or as-needed to fit your schedule. Free estimates! No job too large; no job too small. Call 442-8224.

**MEDIATION OR LEGAL REPRESENTATION** in family matters: dissolution, post-dissolution, parenting issues, child support, name change, wills, social security disability. Call 874-7989 for more information. Lynn M. Malley, mediator and attorney.

The Classified Advertising Section is open only to faculty and staff members and retirees. A home phone number is required in all classified ads. No refunds will be given for cancelled ads.

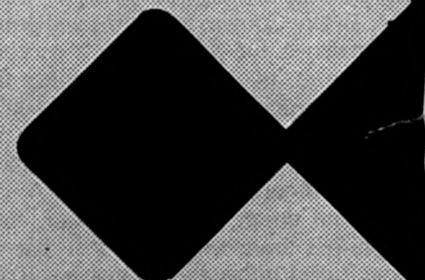
**Ads must be typed.**  
Rates: 30-word maximum \$3.  
Publication deadlines:

Sept. 28 for Oct. 7  
Oct. 5 for Oct. 14

**Mizzou Weekly Classifieds:** Make your check payable to University of Missouri and send to: Mizzou Weekly, 407 Reynolds Center, Attention: David Roloff.

## PARKING AND TRANSPORTATION SERVICES

107 SWALLOW  
882-4568



The Turner Avenue Garage and the Conley Avenue Garage are available for parking on home football game Saturdays and for evening events at Jesse Hall.

**NOW OPEN!**



South Hitt Street

- Convenience Items ■ Hot and Frozen Entrees
- Video Rental ■ Greeting Cards ■ Film Developing ■
- And Much More!

Upper Level Pershing Building  
Northeast of University Hospital, and only a short walk  
from Brady Commons. Stop in today!

## CHEST PAIN?

Have you been diagnosed with coronary artery disease? Do you have attacks of chest pain, heart palpitations, shortness of breath, dizziness, numbness or tingling?

### The University of Missouri-Columbia

is looking for volunteers to participate in a study evaluating the effectiveness of new medications for chest pain and anxiety attacks in persons with a history of coronary artery disease. There is no charge for treatment.

**For more information, call (314) 882-2511.**

Ask for Kristina DeNeve.

*It's time to plan...*

tailgates and football parties, and that means a convenient call to Campus Catering.

Whether you have a group of two or an entire department, Campus Catering can satisfy any number of hungry tiger fans. We can serve picnics or cookout style, box lunches, tailgate parties... whatever you need.



*New this year!*

**Friends of MIZZOU  
Specials.**

Call Julie at 882-2837  
to find out more.

**Campus  
Catering**

# FALL '92 C-BASE TESTING

## Attention Faculty and Undergraduate Advisers

All undergraduate students who have completed **60 or more** hours of course credit **will be required** to take the Undergraduate Assessment Test (C-BASE) **before registering for next semester**. This requirement has been established by the University Board of Curators and must be completed.

### REGISTRATION:

Students must register in person for a specific examination time. Registration is from 8 a.m. to 5 p.m. Sept. 21-Oct. 2 at 208 Brady. Students with disabilities requiring special accommodations must register through the Testing Services office.

### EXAMINATION TIMES:

DAY	DATE	TIME
Saturday	October 3	8 a.m. to noon
Monday	October 5	3 p.m. to 7 p.m. 6 p.m. to 10 p.m.
Wednesday	October 7	3 p.m. to 7 p.m. 6 p.m. to 10 p.m.
Thursday	October 8	3 p.m. to 7 p.m. 6 p.m. to 10 p.m.
Friday	October 9	3 p.m. to 7 p.m.
Saturday	October 10	8 a.m. to noon • 8 a.m. to noon
Monday	October 12	3 p.m. to 7 p.m. 6 p.m. to 10 p.m.
Tuesday	October 13	3 p.m. to 7 p.m. 6 p.m. to 10 p.m.
Wednesday	October 14	3 p.m. to 7 p.m. 6 p.m. to 10 p.m.
Thursday	October 15	3 p.m. to 7 p.m. 6 p.m. to 10 p.m.
Friday	October 16	3 p.m. to 7 p.m.
Saturday	October 17	8 a.m. to noon

• Reserved for College of Education students only.

### UNIVERSITY POLICY:

1. All students (including transfer students) who have earned **60 or more** credit hours are **required** to take the exam.
2. Students who have earned 45 through 59 credit hours are eligible to take the exam.
3. The following students are exempt from taking the exam:
  - a. Students who have taken C-BASE previously to fulfill College of Education requirements or campus-wide assessment (unless taken prior to earning 45 credit hours).
  - b. Students who have already earned one or more bachelor's degrees.
4. Students who are off "campus" due to participation in a Study Abroad program or the National Student Exchange program will be given a temporary waiver, but must take the exam when it is offered during their first semester back on campus.
5. No retakes are permitted during campus-wide testing. Education students needing to **retake** all or part of C-BASE must attend one of the sessions scheduled on a state-wide basis.

### QUESTIONS?

Call or visit: Testing Services 220 Parker Hall 882-4801

# CALENDAR

Send calendar items in Campus Mail to Michelle Holden, 407 Reynolds Center, by noon Wednesday the week before publication. Events are free and open to the public unless otherwise noted.

## Highlights

**COUNTRY MUSIC:** Mary-Chapin Carpenter will perform at 8 p.m. Sept. 24 in Jesse Aud. Cost: \$10 for MU students; \$12 public.

**ATA TAEKWONDO TOURNAMENT:** Event will be from 8:30 a.m.-4 p.m. Sept. 26 at the Hearnes Center.

**WOMEN'S CENTER:** A simulated mugging demonstration will be offered Sept. 27 at the Columbia Athletic Club. Call 882-6621 for times.

## 23 Wednesday

**EMPLOYEE DEVELOPMENT SEMINAR:** Jamie Baker and Darcy Ihrig-Begemann, senior personnel associates in Personnel Services/Affirmative Action, will present "The Employee Interview" from 9 a.m.-4 p.m. in 146 Heinkel Bldg.

**MEDICAL INFORMATICS GROUP:** Eileen Jackson, registered nurse and postdoctoral fellow in the Department of Anthropology, will present "Knowledge Acquisition Methods in Health Care Research" from noon-1 p.m. in 606 Lewis Hall.

**MIDDAY GALLERY EVENT:** "Highlights from DOCUMENTA IX: The Most Important and Controversial International Art Expo" will be presented by Birgit Wassmuth, associate professor of journalism, at 12:15 p.m. at the Museum of Art and Archaeology.

**MOLECULAR MICROBIOLOGY AND IMMUNOLOGY SEMINAR:** Michael Caparon of Washington University will speak on "Environmental Regulation of Surface Protein Expression in Group A Streptococci" at 1:40 p.m. in M640 Medical Sciences Bldg.

**PHYSIOLOGY SEMINAR:** Michael Henzl, assistant professor of biochemistry, will present "Physical and Biochemical Studies on Parvalbumins of Extramuscular Origin" at 2:40 p.m. in M437 Medical Sciences Bldg.

**COMMITTEE ON THE STATUS OF WOMEN:** Group will meet at 3:40 p.m. in 229 Brady Commons.

**WOMEN'S CENTER:** Karolin Solorzano, attorney, will present "Finding a Feminist Lawyer" at 7 p.m. in 229 Brady Commons.

**UNIVERSITY CLUB:** A wine-tasting event, "Missouri State Fair Award Winners," will be from 7-9 p.m. at the Reynolds Center. Cost: \$10. Call 882-2586.

**ECOLOGY AND EVOLUTION SEMINAR:** Alan Rebertus of the School of Natural Resources will present "Gap Formation and Canopy Dieback in a Fuego-Patagonian Nothofagus Forest" from 7:30-8:30 p.m. in 106 Lefevre Hall.

**MSA/GPC FILM:** *Children of the Corn* will be shown at 8 p.m. in Ellis Aud.

## 24 Thursday

**ENGINEERING SEMINAR:** "Underground Storage Tanks" will be presented from 7 a.m.-4:30 p.m. in Ketcham Aud., Engineering Bldg. East. Cost: \$180. Call 1-800-776-1044 to register.

**INTERACTIVE SATELLITE PROGRAM:** The Wisconsin/Kellogg Project's National Extension Leadership Development Program will focus on the theory and practice of "next age leadership" from 11 a.m.-1 p.m. "Missouri Rural Health:

Successfully Meeting the Challenge" will be presented from 7-8:30 p.m. Broadcasts will be shown in 20 Academic Support Center.

**STAFF COUNCIL:** Group will meet at 1:15 p.m. in S110 Memorial Union.

**MISSOURI RURAL INNOVATION INSTITUTE:** "Missouri Rural Health: Successfully Meeting the Challenge" will be presented from 6:30-9:45 p.m. at the Education Satellite Network, 2100 I-70 Drive SW, and on campus cable channel 40.

**WOMEN'S CENTER:** A lesbian roundtable dinner will be at 6:30 p.m. Patty Faber, media committee member, will present "Interacting with the Media" at 7 p.m. in 229 Brady Commons.

**LITERARY ACTION CORPS:** Group will hold a training session for people interested in becoming adult reading tutors from 6:30-9:30 tonight, Sept. 29 and Oct. 1. A separate training program will be offered for those who want to tutor speakers of other languages. Materials fee: \$10. Call 474-8768 or 474-2242 to register.

**COUNTRY MUSIC CONCERT:** See Highlights.

## 25 Friday

**ENGINEERING SEMINAR:** "Sampling and Laboratory Analysis of Hazardous Substances" will be offered from 7 a.m.-4:30 p.m. in Ketcham Aud., Engineering Bldg. East. Topics will include field screening methods, sampling techniques and equipment, and laboratory support and analysis. Cost: \$180. Call 1-800-776-1044 to register.

**HUMAN ENVIRONMENTAL SCIENCES:** The environmental design advisory board will meet from 8 a.m.-4 p.m. at the Reynolds Center.

**EMPLOYEE DEVELOPMENT SEMINAR:** "Desk Manual" will be presented by Joy Overacre, adult education instructor, from 9 a.m.-3 p.m. in the Technology Training Center in the basement of Lewis Hall.

**ENTOMOLOGY SEMINAR:** Jose Cardozo will present "Oviposition and Larval Survival of the Black Cutworm, *Agrotis ipsilon*, on Selected Grasses and Clover" at 2:40 p.m. in 2-7 Agriculture Bldg.

**CHEMISTRY SEMINAR:** Ivan Lantos of SB Pharmaceuticals will present "The Role of Organic Synthesis in the Drug Discovery and Development Process" at 3:40 p.m. in 103 Schlundt Hall.

**MSA/GPC FILM:** *JFK* will be shown at 7 and 9:30 p.m. in Ellis Aud. Cost: \$2.50 at the door or \$2 in advance for MU students.

**ECLECTIC ARTS SERIES:** Pianist and singer Barbara Higbie will perform at 8 p.m. in Jesse Aud.

**WOMEN'S STUDIES CONFERENCE:** "Room for Everyone: Women's Studies in the '90s" will be today and Sept. 26. JoAnn Loulan, author, sex educator and counselor, will present "JoAnn Loulan on Lesbian Sex Education" at 8:15 p.m. in Townsend Aud. She also will offer a day-long workshop, "The Lesbian Erotic Dance: Liberating Our Sexuality" for women only from 9 a.m.-4 p.m. Sept. 26. Call 882-2703.

## 26 Saturday

**ATA TAEKWONDO TOURNAMENT:** See Highlights.

**MISSOURI STATE FIRE INSTRUCTORS CONFERENCE:** "Shaping the Future" will be a two-day conference beginning at 9 a.m. today in Hulston Hall. Cost: \$65. Call 882-4735.

# EXHIBITS

**BINGHAM GALLERY:** The Annual Art Faculty Exhibition, featuring works in painting, drawing, graphic design, sculpture, fibers, ceramics, jewelry, printmaking and mixed media, will be on display through Sept. 25. Hours: 10 a.m.-4 p.m. Monday through Friday and 2-4 p.m. Sunday. Gallery is in the Fine Arts Building.

**BRADY COMMONS GALLERY:** Scott Smith's ceramics and sculpture will be on display through Oct. 1. Hours: 8 a.m.-5 p.m. Monday through Friday. Gallery is located on the second floor of Brady Commons.

**MEMORIAL UNION:** "The Public Journal Is a Public Trust," an exhibit on the School of Journalism, is on display in the south wing exhibit cases through October. The exhibit was prepared by University Archives, with cooperation from the School of Journalism Museum.

**MUSEUM OF ANTHROPOLOGY:** Archaeological collections include millions of artifacts dating from 9000 B.C. to modern times. The focus is on the prehistory of Missouri and the Midwest. Hours: 9 a.m. to 4 p.m. Monday through Friday and 9 a.m. to 1 p.m. on home football Saturdays. The museum is located in Swallow Hall.

**MUSEUM OF ART AND ARCHAEOLOGY:** "Pre-Columbian Textiles from the Permanent Collection" will be on display Sept. 26-Dec. 6. The museum, in Pickard Hall, is open from 9 a.m.-5 p.m. Tuesday through Friday and noon-5 p.m. Saturday and Sunday.

**ROGERS GALLERY:** "Advanced Computer Graphics and Animation for Art and Design," a visual report by Richard Helmick, will be presented through Oct. 31. Hours: 8:30-11:30 a.m. and 1:30-4:30 p.m. Monday through Friday. Gallery is on the first floor of Stanley Hall.

**STATE HISTORICAL SOCIETY:** Works by painter and draftsman Frederick Emanuel Shane, and "Genesis" by sculptor Larry Young, will be on display in the gallery in the east end of Ellis Library; "Original Editorial Cartoon Drawings: Daniel Fitzpatrick, S.J. Ray, Bill Mauldin and Tom Engelhardt" will be on display in the north-south corridor; and "Decades: 1882-1972, Editorial Cartoons" will be on display in the east-west corridor, all from early October to late December. The gallery is open from 8:30 a.m.-4 p.m. Monday through Friday and the corridors are open from 8 a.m.-4:30 p.m. Monday through Friday and 9 a.m.-4:30 p.m. Saturday.

**UNIVERSITY HOSPITAL:** The 7th annual Staff for Life Art Show, featuring drawings, fiber arts, jewelry, paintings, photography and stained glass by hospital staff members, is on display through Sept. 30 in the main lobby concourse.

**WOMEN'S CENTER:** Kevin Leiby, owner-operator of Precision Auto Service, will present "At Home with Your Car" from 9 a.m.-noon at Precision Auto Service, 15 Colorado St.

**MSA/GPC FILM:** *JFK* will be shown at 7 and 9:30 p.m. in Ellis Aud. Cost: \$2.50 at the door or \$2 in advance for MU students with an ID.

**MU RETIREES ASSOCIATION:** David Leuthold, professor of political science, will present "The Politics of Retirement Benefits" at the group's fall meeting, at 10 a.m. at the Reynolds Center.

**MUSEUM ASSOCIATES ACTIVITIES:** A Corporate, Patron and Fellow Gala will be at the Museum of Art and Archaeology. Corporate, fellow or patron membership is required.

**UNIVERSITY SINGLES:** Group will have a potluck dinner at 6:30 p.m. Call 443-1601 or 445-2174.

## 27 Sunday

**FORTNIGHTLY CLUB:** Today is the deadline to register for the group's centennial celebration, at 7 p.m. Oct. 16 at the Reynolds Center. Cost: \$5. Send registration fee to Nan Cassidy, 3216 Westcreek Circle, Columbia, Mo., 65203. With questions, call 443-4475.

**WOMEN'S CENTER:** See Highlights.

# Prostate Cancer Screening

6-8 p.m.  
Sept. 30, Oct. 1 and 5  
Ellis Fischel Cancer Center

Screening includes:  
\*digital rectal exam by urologist  
\*prostate-specific antigen (PSA) blood test

In recognition of Prostate Cancer Awareness Week, Ellis Fischel Cancer Center is offering this free prostate cancer screening for men over age 50. Prostate cancer is the most common type of cancer found in males, affecting one out of every 11 men. It also is highly treatable if detected early. A simple rectal exam and a new blood test called PSA increase your chances for early detection.

Appointments are necessary and spaces are limited.  
Call 882-6565.

 Ellis Fischel  
Cancer Center  
*The Staff for Life*

**SOFTBALL:** Tigers will play Johnson County at 1 p.m. on University Field.  
**LATIN AMERICA IN FILM:** *Bye Bye Brazil* will be shown at 2 p.m. in Pickard Hall Aud.  
**MSA/GPC FILM:** *M* will be shown at 8 p.m. in Ellis Aud. Cost: \$1.

**Survivors Group** from 6:30-8 p.m. Mondays through Dec. 7 at the center. Call 882-6621 to schedule a screening interview. Tonight, Didi Lilla, yoga meditation teacher with Ananda Marga, will present "Holistic Yoga Experience" at 7 p.m. in 229 Brady Commons. Call 882-6621 to register.  
**MSA/GPC FILM:** *Europa, Europa* will be shown at 8 p.m. in Ellis Aud. Cost: \$1.50.

## 28 Monday

**WOMEN'S CENTER:** Marion Pusateri, doctoral candidate in counseling psychology, will present "Assertion Training" from 6:30-8 p.m. Mondays through Oct. 26 in 229 Brady Commons. Also, Marianne Goedinghaus, counseling intern and doctoral candidate in counseling psychology, and Allyson Hawkins, rape education intern and doctoral candidate in counseling psychology, will present "Rape

## 29 Tuesday

**UNITED WAY:** Campaign kickoff will be at 7:30 a.m. in N214-215 Memorial Union.  
**EMPLOYEE DEVELOPMENT SEMINAR:** Dixie Lenau, manager of Training and Office Support Services, will present "Marketing Yourself for a Career" from 8 a.m.-noon in 146 Heinkel Bldg.  
**Please turn to Page 8.**

**Still more from your EAP:**

### Women in Transition Group

**Beginning:** Sept. 29  
**Time:** 5:15 p.m. each Tuesday for six weeks  
**Location:** 103 Parker Hall, Counseling Center

Group is open to all female employees. Enrollment is limited and participants are encouraged to sign up early. Designed to offer support, information and guidance to women experiencing career-related, personal, marital and other major changes in their lives. No charge.

**To enroll, call  
Employee Assistance Program  
882-6701.**

## CAMPUS COMPUTING

# Short Courses

The following non-credit short courses are free of charge and open to MU faculty, staff, graduate and undergraduate (where noted) students. Registration is required. To enroll, please call 882-2000.

**Course:** Introduction to DOS II  
**Dates & Times:** Section 2: September 30, 1:30-4:30 pm  
**Place:** 266 Heinkel Building

**A continuation of DOS I.** Topics include preparing and using the DOS commands DiskCopy, XCopy, Backup and Restore to make backup copies of files and subdirectories on floppy disks or hard disks.

**Prerequisite(s):** Introduction to DOS I or working knowledge of basic DOS commands.

**Course:** Introduction to WordPerfect 5.1  
**Dates & Times:** Section 2: September 29, 1:30-4:30 pm  
**Place:** 266 Heinkel Building

**A hands-on overview** of the basic features of the word processing program WordPerfect 5.1. It is not intended for practiced users of previous versions. The course will introduce WordPerfect concepts and procedures including editing techniques, block commands, page and line formatting, spell checking, search and replace and printing.

**Prerequisite(s):** A working knowledge of the IBM PC.

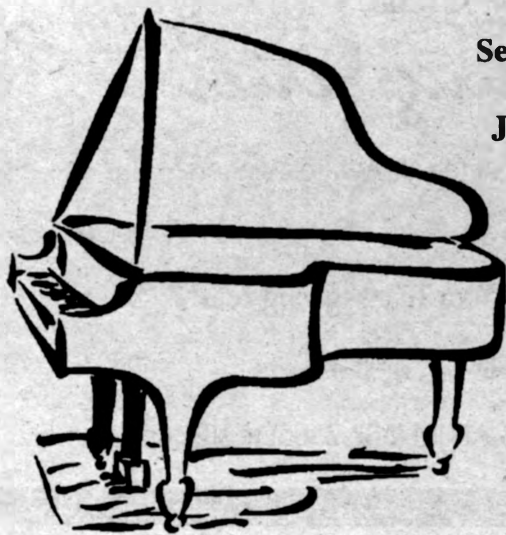
**Course:** INFORMU  
**Dates & Times:** October 8, 1:30-2:30 pm  
**Place:** 226 Heinkel Building

**INFORMU (INformation FOR MU)** is the electronic information access system available on MIZZOU1. While it is a menu driven system, it also has a variety of shortcuts and features which can make it more useful. Learn about its capabilities for information distribution in your area, how to find the information you are seeking, and provide input on what kinds of information you feel should be available there.

**Prerequisite(s):** Beginning CMS or basic CMS knowledge.

### Campus Computing

Windham Hill Recording Artist  
**Barbara Higbie**  
Pianist and Vocalist



September 25, 1992  
8:00 p.m.  
Jesse Auditorium

UMC students \$6.00  
General Public \$8.00  
Individual and season tickets available at the MSA/GPC Box Office 882-4640



**eclectic Arts**  
s e r i e s

## eclectic Arts series

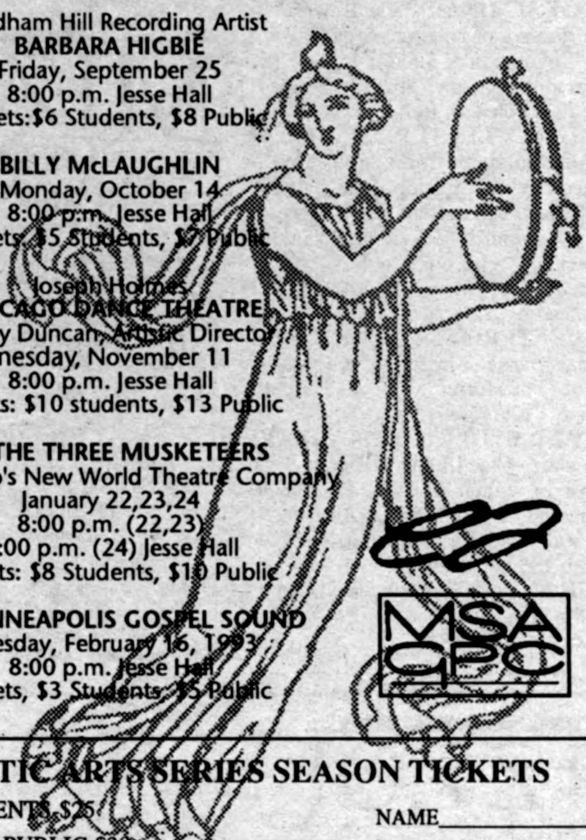
Windham Hill Recording Artist  
**BARBARA HIGBIE**  
Friday, September 25  
8:00 p.m. Jesse Hall  
Tickets: \$6 Students, \$8 Public

**BILLY McLAUGHLIN**  
Monday, October 14  
8:00 p.m. Jesse Hall  
Tickets: \$5 Students, \$7 Public

Joseph Holmes  
**CHICAGO DANCE THEATRE**  
Randy Duncan, Artistic Director  
Wednesday, November 11  
8:00 p.m. Jesse Hall  
Tickets: \$10 students, \$13 Public

'93 **THE THREE MUSKETEERS**  
by Chicago's New World Theatre Company  
January 22, 23, 24  
8:00 p.m. (22, 23)  
2:00 p.m. (24) Jesse Hall  
Tickets: \$8 Students, \$10 Public

**MINNEAPOLIS GOSPEL SOUND**  
Tuesday, February 16, 1993  
8:00 p.m. Jesse Hall  
Tickets, \$3 Students, \$5 Public



### ECLECTIC ARTS SERIES SEASON TICKETS

MU STUDENTS \$25  
GENERAL PUBLIC \$38  
Tickets available at the MSA/GPC Box Office on the main level of Brady Commons.  
HOURS Mon.-Fri. 9:30-5:30 and Sat. 9:00-12:00

NAME \_\_\_\_\_  
ADDRESS \_\_\_\_\_  
CITY \_\_\_\_\_  
STATE \_\_\_\_\_ ZIP \_\_\_\_\_  
PHONE \_\_\_\_\_

## Calendar

Continued from Page 7.

### PHARMACOLOGY RESEARCH

**SEMINAR:** Linda McPhail of Wake Forest University will present "Regulation of the Respiratory Burst Enzyme in Human Neutrophils" at 10:40 a.m. in M328 Medical Sciences Bldg.

### BUSINESS AND PUBLIC

**ADMINISTRATION:** Peter Dyvig, ambassador to the U.S. from Denmark, will give the John Schram Lecture at 3:15 p.m. in Memorial Union Aud.

### BIOLOGICAL SCIENCES SEMINAR:

Steve Alexander, associate professor of molecular biology, will speak on "Gene Expression and Morphogenesis in *Dictyostelium discoideum*" at 3:40 p.m. in 115 Tucker Hall.

### CHEMICAL ENGINEERING SEMINAR:

Hirotsugu Yasuda, professor of chemical engineering, will present "Interface Engineering" at 3:40 p.m. in W0015 Engineering Bldg. East.

### CAREER PLANNING AND PLACEMENT

**WORKSHOP:** "Who Are You? Finding Careers that Fit Your Values" will be presented from 5:30-6:30 p.m. in 110 Noyes. Cost: \$20 for user pass, which includes admission to seven other workshops. Call 882-6801.

**WOMEN'S CENTER:** Didi Lilla, yoga meditation teacher with Ananda Marga, will present "Dancing in the Light" at 7 p.m. in 229 Brady Commons. Call 882-6621 to register.

## 30 Wednesday

### EMPLOYEE DEVELOPMENT SEMINAR:

LeAnn Stewart, training/development coordinator, will present "Goals and Objectives" from 9 a.m.-noon in 146 Heinkel Bldg.

### MEDICAL INFORMATICS GROUP:

Tim Patrick, postdoctoral fellow, will present "OA-Client: An Exercise Advisor Program for People with Osteoarthritis" from noon-1 p.m. in 606 Lewis Hall.

### MIDDAY GALLERY EVENT:

Morteza Sajadian, director, and Teresa Militello, graduate student in museum studies, will present "Pre-Columbian Art from the Permanent Collection" at 12:15 p.m. in the Museum of Art and Archaeology.

### PHYSIOLOGY SEMINAR:

Jesse Bowen, assistant professor of pharmacology, will speak on "Regulation of Sodium Pump Expression in the Kidney" at 2:40 p.m. in M437 Medical Sciences Bldg.

### ANTHROPOLOGY LECTURE SERIES:

Howard Marshall, professor of art history and archaeology and director of the Cultural Heritage Center, will present "Vicissitudes of Kinship, Continued: Celtic Place Names and Vernacular Architecture in the American Midwest" from 3:40-5 p.m. in 2047 Engineering Bldg.

### WOMEN'S CENTER:

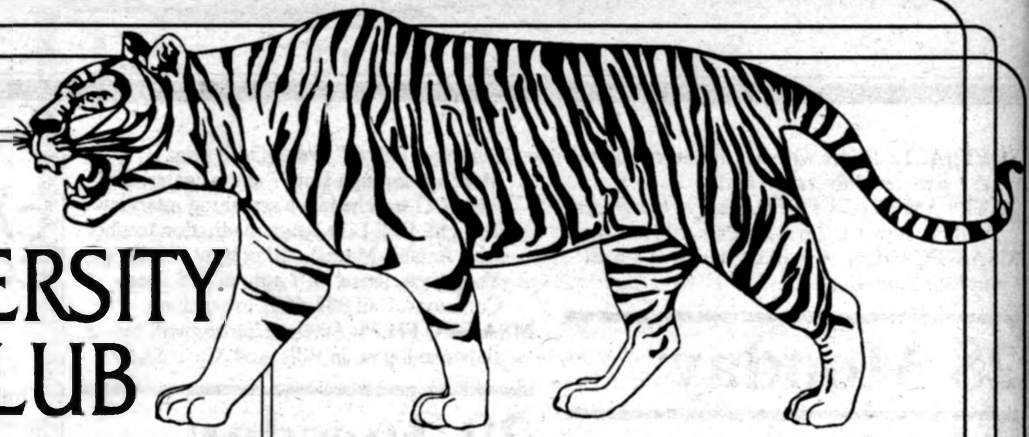
Diane LaMar, licensed professional counselor in private practice, will present "Transforming Anger" at 7 p.m. in 229 Brady Commons.

### ECOLOGY AND EVOLUTION SEMINAR:

Mark Schwartz of the Illinois National History Survey will present "The Decline of the Endangered Florida Torreya: An Ecologist's Conundrum" from 7:30-8:30 p.m. in 106 Lefevre Hall.

**MSA/GPC FILM:** *The Color Purple* will be shown at 8 p.m. in Ellis Aud.

# Preview The UNIVERSITY CLUB



*All are welcome to try us out during September and October!*

### Of course, you can enjoy us right now.

As is usual with the opening of a Club, confusion pops up in a number of places. The question we seem to be asked most frequently is, "Can I use the Club without a membership card?" The answer is irrevocably yes.

Coming in a close second is how do I get the senior rate. To qualify for the senior membership rate of \$5 a month, one must be over 65 years of age in this school year. Your application does not take this into consideration. A phone call to us will give you your senior rate.

Anyone eligible for membership, and all current and retired faculty and staff certainly are, can use the Club now and for the immediate future by paying cash or charging on Visa or MasterCard.

We'll maintain this policy until everyone has had ample time to return applications and receive appropriate membership cards.

### A reminder regarding dinner

Just so you won't forget and knock on our door at the wrong time, we will continue to serve dinner from 5 to 9 p.m. on Friday and Saturday evenings only for the next few weeks. When Chef Rick feels things are humming, we'll extend that meal to six nights a week.

Another reminder: Breakfast is 7-9 a.m., lunch is 11 a.m.-2 p.m. Monday through Friday. The Lounge is open at 11 a.m. Monday through Friday, Saturday at 4 p.m.

Located on the second floor of the Donald W. Reynolds Alumni & Visitor Center.

# MIZZOU WEEKLY

Vol. 14

No. 5

A publication of the University of Missouri-Columbia faculty and staff, published every Wednesday during the academic year and twice a month during the summer by Publications and Alumni Communication, a department of Development, University and Alumni Relations Division, 407 Reynolds Alumni and Visitor Center, 882-7357. News deadline is noon Wednesday the week before publication. Annual subscriptions are available for \$20.

Editor: Terry Jordan  
Assistant editor: John Beahler  
Staff writer: Sue Richardson  
Advertising manager: David Roloff  
Graphic editor: Nancy Daniel



Printed with soy ink on recycled newsprint containing 90 to 100 percent post-consumer waste.

## Announcing The University Club's

## Wine Tasting Series



SOLD OUT	"Missouri State Fair Award Winners"	Sept. 23	7-9 p.m.
	"Light Red Wines"	Oct. 15	7-9 p.m.
	"Wines for Your Thanksgiving Feast"	Nov. 12	7-9 p.m.
	"Sparkling Holiday Wines"	Dec. 3	7-9 p.m.

Call 882-ALUM (882-2586) to sign up.

# MIZZOU WEEKLY

Publications and Alumni Communication  
407 Reynolds Alumni and Visitor Center  
Columbia, MO 65211

University Libraries  
University of Missouri

### Digitization Information Page

Local identifier                      MizzouWeekly(print)

### Source information

Format                                      Newspaper  
Content type                              Text with images  
Source ID                                  Duplicate copies University Archives weeded out  
Notes

### Capture information

Date captured                              July-December, 2022  
Scanner manufacturer                      Plustek OpticBook  
Scanner model                              A300 Plus  
Scanning system software                      Book Pavilion  
Optical resolution                              600 dpi  
Color settings                              8 bit grayscale for majority of pages;  
    24 bit color for color illustrations/portraits/photographs  
File types                                      tiff  
Notes

### Derivatives - Access copy

Compression                              Tiff: LZW compression  
Editing software                              Adobe Photoshop 2022  
Resolution                                      600 dpi  
Color    same as captured  
File types                                      pdf created from tiffs  
Notes    Images cropped, straightened, and brightened.