

2
1
1

Directions For Clothes Closet Ecology II

Velda Rankin
Clothing and Textiles Specialist

Archive version -
check for updates

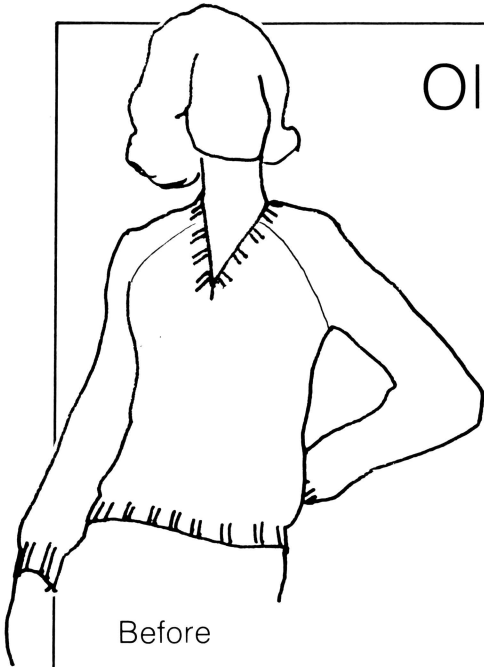
MP499
10/77/5M

Clothes Closet Ecology II

Today's clothing costs and shortages make it important to wisely use our existing wardrobes. Take a careful look at what you have and what you need. Can you recycle some items that are not being used? Making something for nothing can be exciting. Some projects may be as quick and easy as adding a trim or changing a hemline. Others may be more time consuming. Whether reusing a favorite and treasured fabric or creating a useful article for a slight cost, recycling can be fun. Supplies for the following ideas may be hidden in your closet.

Velda Rankin
Clothing and Textiles Specialist

Old Sweaters— New ways



Before



Big Knit Pullover

Supplies:

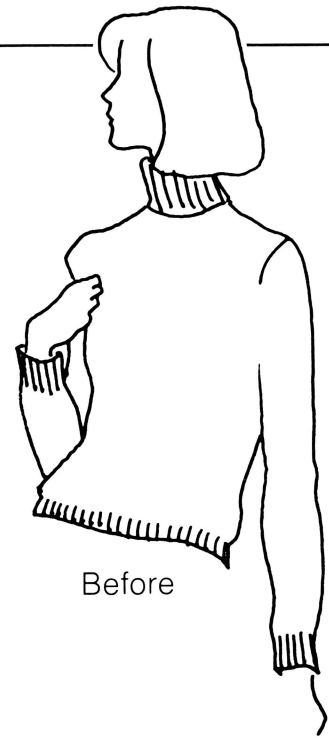
- 1 bulky V-necked sweater
- 1 36" x 8" strip of coarsely-gauged, bulky ribbed knit in a harmonizing color.
- 1 long scarf in contrasting color and pattern.

1. Reduce bulk in the sweater by fitting it through the body and sleeves.
2. Mark with pins before taking the sweater off.
3. Machine stitch along the new seamline at least twice if the sweater is very bulky. Stitch from the armseye to the hem of the sweater and from the armseye to the sleeve hem.

4. Cut away the surplus knit leaving a 1/2" seam allowance.
5. Put the sweater on and place the rib-knit trim around the neckline starting with one end at the center V and ease the knit on to the sweater.
6. Mold the knit into a collar shape without stretching or pulling.

7. Pin the knit strip in place one inch inside the sweater neckline.
8. Mark and cut the collar shape leaving 1/2 inch for turnunder on the unfinished collar edge.
9. Handstitch the unfinished edge in place.
10. Handstitch the trim to the inside of the sweater neckline. Tack at center

11. Measure the width of cuff desired and cut from the remaining trim. Do not stretch the knit when cutting and leave 1/2" seam allowance.
12. Sew the cuff ends together.
13. Pin the knit trim in place on the sweater cuff and stitch.



Before

Sew a Knit plaid onto the front of an old turtleneck for a new look.

Plaid Turtleneck

Supplies:

- 1 yard plaid fabric
- Loosely fitting turtleneck sweater
- Tissue paper

1. Lay the sweater on a flat surface and pin the tissue paper to the sweater.
2. With a soft marking pencil, trace the area where the plaid fabric is to be placed on the sweater. Be sure the fabric does not extend into the neck edge or over the shoulder.
3. Remove the tissue and do the same thing to the back of the sweater.
4. Pin the tissue pattern to the fabric being careful to center the pattern on the plaid.
5. Add a $\frac{5}{8}$ " seam allowance to the paper pattern and cut.
6. Place the right sides of the fabric pieces together and stitch the side seams.
7. Press the seams, turn right side out and slip the fabric over the sweater.
8. Turn under the $\frac{5}{8}$ " seam allowance and pin the fabric to the sweater.
9. Blind stitch the edges to the fabric.
10. Machine top-stitch approximately $\frac{1}{4}$ " from the edge.
11. Cut and remove the sweater fabric from the area covered by the plaid.
12. Gather the bottom of the plaid to get a blouson effect.
13. Use the sweater ribbing to finish the bottom of the plaid.



Before

Renew A Cardigan



Tyrolean Sweater Jacket

Supplies:

- 1 wool, loose cardigan
- Separating zipper the length of the sweater minus 4 inches
- Elastic for waist
- 15 yards each of 5 colors of yarn
- Tapestry needle
- 1 solid colored yarn tassel for zipper pull
- ¼ yd. medium mesh needlepoint canvas
- ⅝" seam binding

1. Remove the buttons and sew the buttonholes together.
2. Lay sweater on a flat surface and put a cardboard between the front and back.
3. Place the zipper under the sweater front and 4" down from the neckline.
4. Pin the zipper in place.
5. Hand stitch the zipper with small stitches and as close

to the zipper edge as possible.

6. Mark the natural waistline.
7. Stitch ⅝" seam binding 1" below the natural waistline.
8. Insert elastic into the casing formed by the seam tape.
9. Stitch down one end of the tape.
10. Fit and attach the opposite end of the tape.
11. Blanket stitch all edges of the sweater in contrasting threads.
12. Make a double row of blanket stitches around the armhole.
13. Embroider flowers in a

scattered pattern down the front of the sweater.

- a. Draw the flower design on the needlepoint canvas.
- b. Baste the canvas on the sweater where you want the design.
- c. Embroider through the canvas with a tapestry needle.
- d. When embroidery is complete, carefully cut away the canvas thread down one side of the design and pull out the canvas threads.

Shawl-collared Cardigan

Supplies:

- Knit scarf in a pattern that goes with the sweater.
- Long cardigan sweater.

1. Put the sweater on and pin the center of one scarf edge to the center back of the cardigan.
2. Ease the scarf onto the sweater around the neck edge and down the front. The scarf should be widest at the center back and curve gracefully around the neckline.
3. The scarf should be entirely on the inside of the sweater from the first button down to the bottom.
4. Cut the scarf even with the bottom of the sweater leaving enough fabric for hemming.
5. Stitch the scarf to the sweater $\frac{1}{4}$ inch from the sweater edge.
6. Run a second row of stitching from the first button to the bottom of the sweater.
7. Slit and finish buttonholes in the scarf to match those in the sweater.

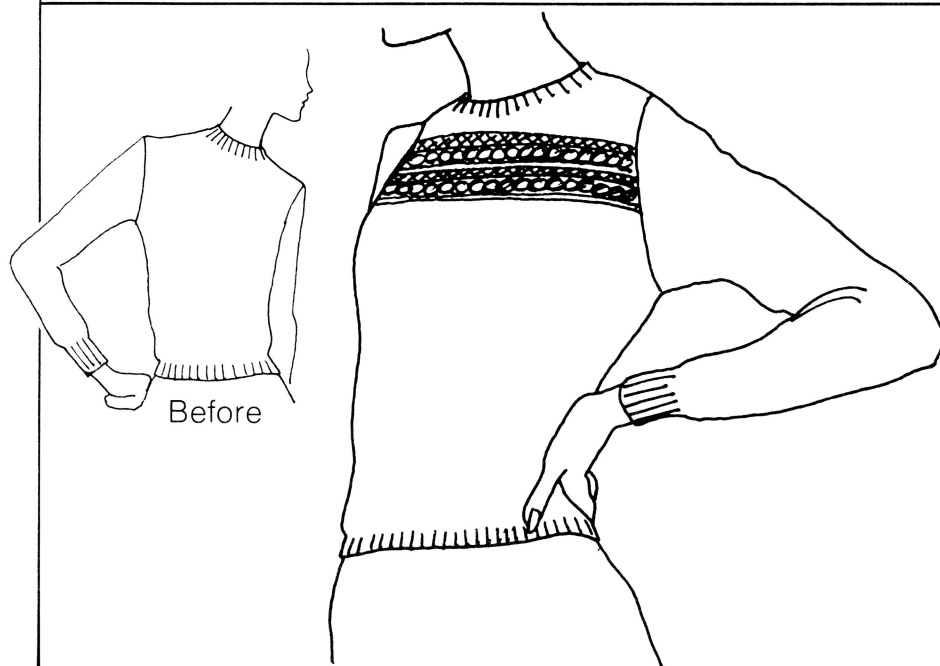


Embroidered Pullover

Supplies:

- Pullover
- Tailor's chalk in contrasting color
- Cotton embroidery thread
- Embroidery needle

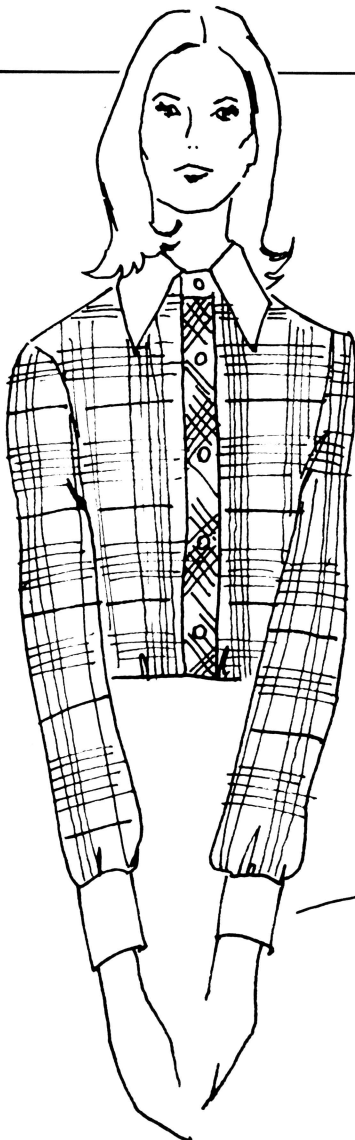
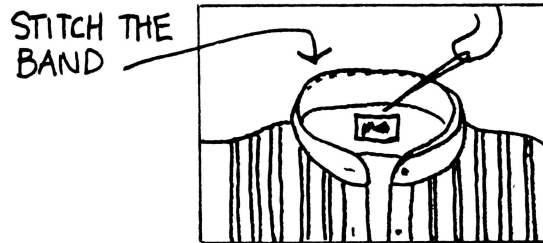
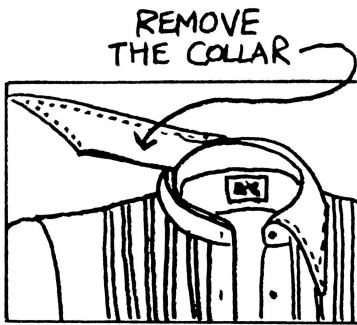
1. Lay sweater flat.
2. With tailor's chalk draw guidelines for each row of embroidery.
3. Embroider over the drawn lines alternating three rows of chain stitch with one row of cross stitch.



Shirt

1. Select a man's full tuxedo shirt with ruffles.
2. Carefully remove the collar from the band.
3. Stitch the collar band together again.

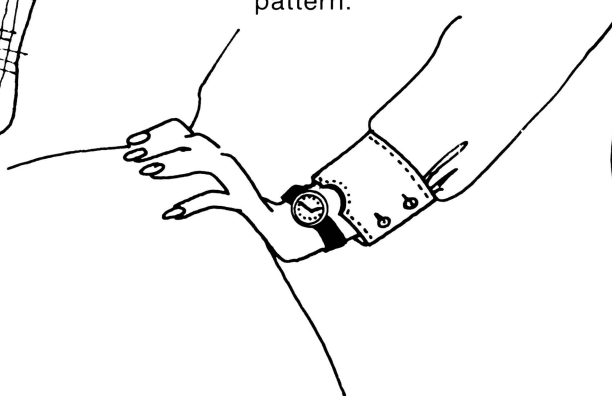
4. Cut off the sleeve at the cuffs and finish with a small hem.
5. Attach small white buttons or use shirt studs.
6. Dye the shirt or leave it snowy white.
7. Wear the shirt over a T-shirt or turtleneck with a harmonizing belt.



Conventional Shirt

Shirts may be rejuvenated by:

1. Carefully removing the collar and cuffs and replacing with white ones.
2. Making a blouson by:
 - a. Measuring the figure for the length of shirt.
 - b. Add two inches plus one inch for casing to the first measure.
 - c. Cut the shirt and finish the bottom edge.
 - d. Make a fabric tie from the leftover shirt tail and thread it through the casing.
3. Watch Cuff
 - a. Use the regular cuff pattern.
 - b. Use the left cuff for the watch detail.
 - c. Divide the cuff into thirds.
 - d. Cut a circle in the cuff beginning at the one third mark nearest the buttonhole end of the cuff.
 - e. Stitch the cuff, turn, press and top stitch.





Remaking A Plaid Shirt

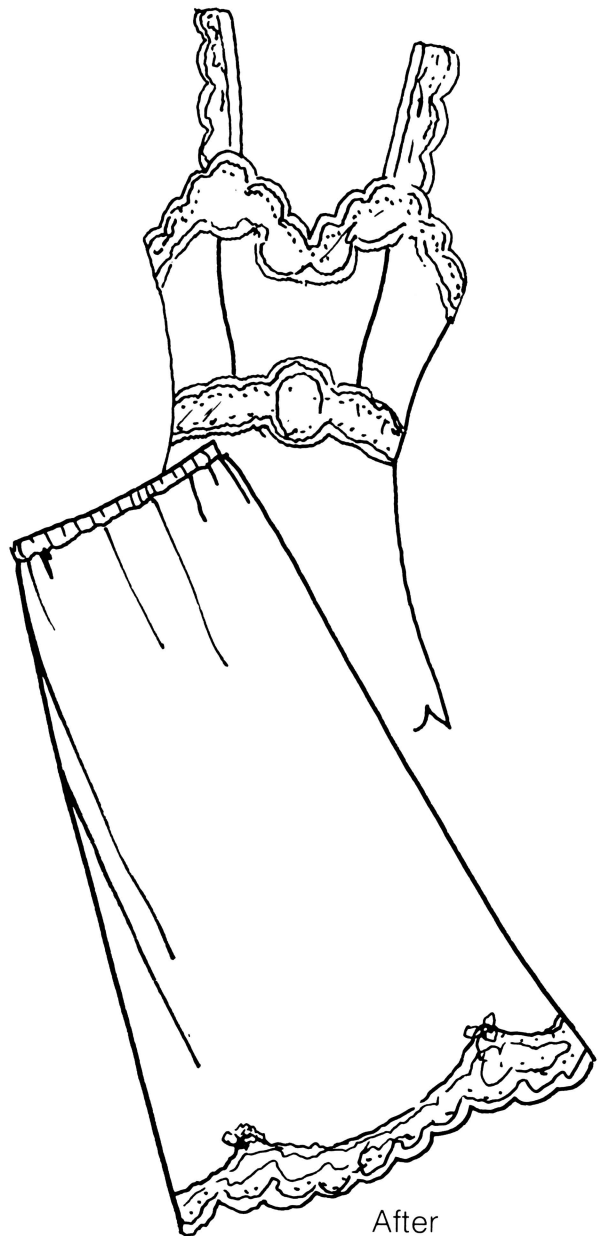
Supplies:

- Man's heavy cotton or wool plaid shirt
- Vest pattern
- Lining

1. Rip apart the shirt and press pieces.
2. Place the fitted pattern on the shirt piece and cut.
3. Cut the pattern a second time from the lining.
4. Stitch the vest and bind with lining fabric.



Before



After

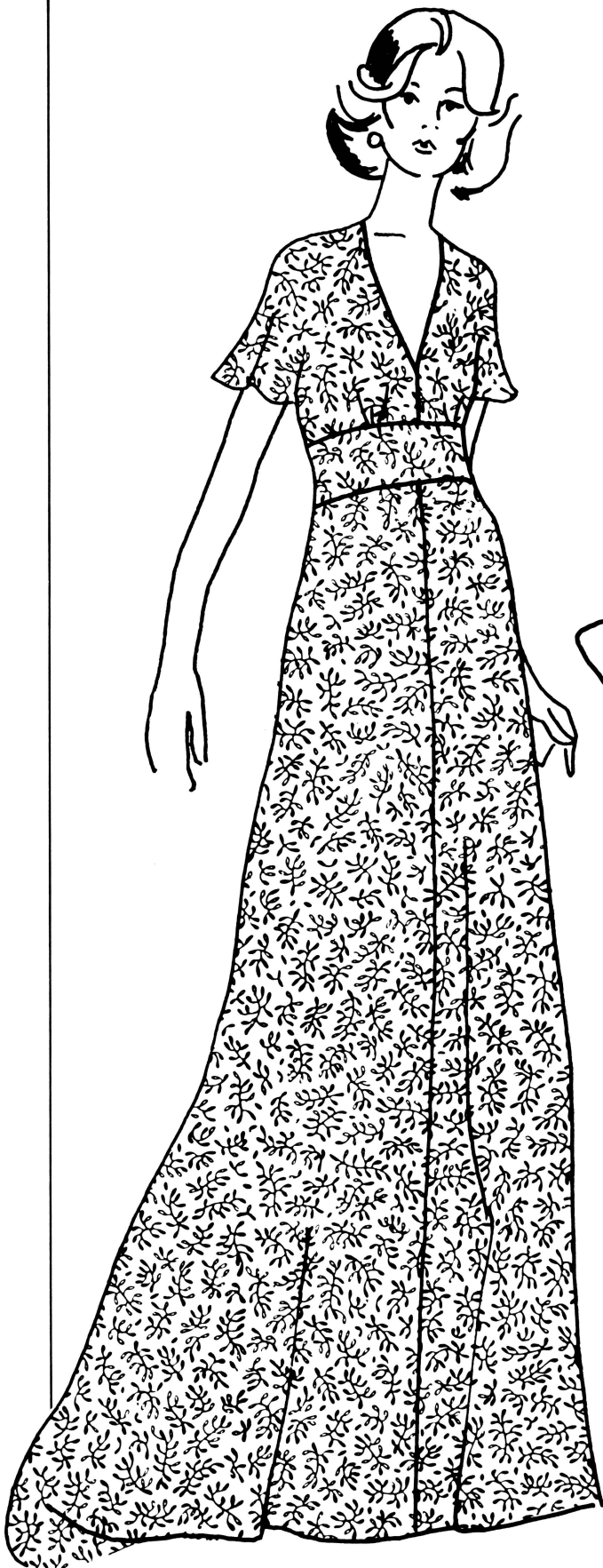
Slip

A short slip may be utilized by making it into a camisole or a half slip.

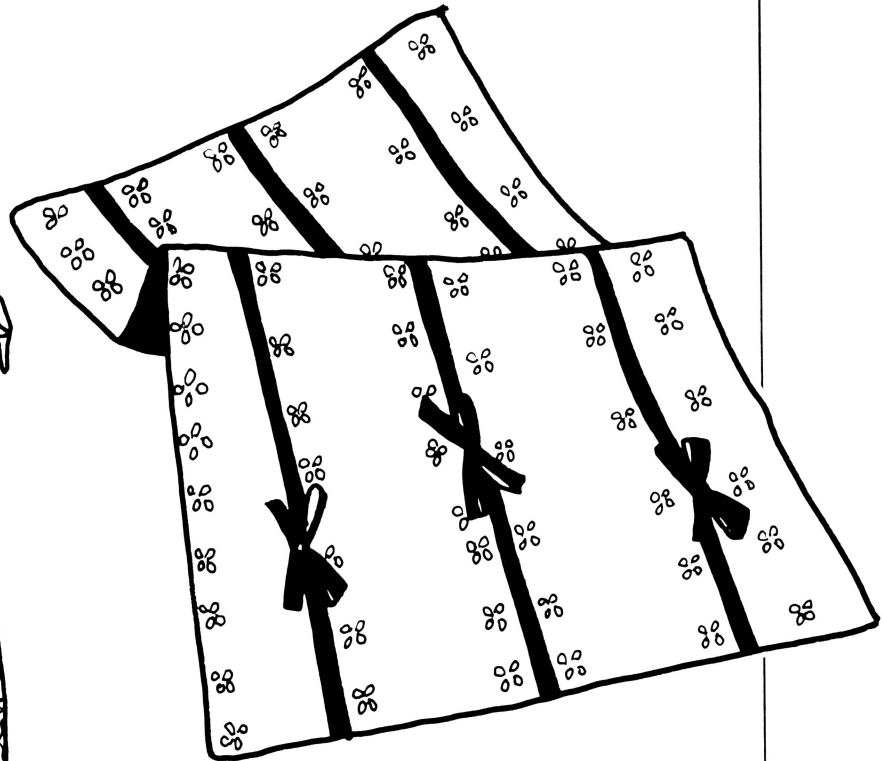
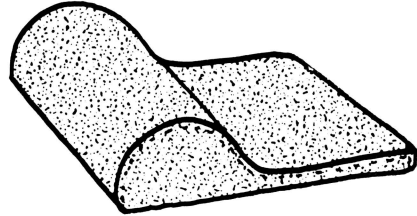
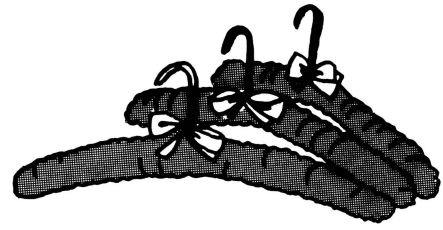
1. Mark the slip at the normal waistline.
2. Measure from waistline to hip.
3. Lay the slip flat and place a row of pins by measuring the camisole length at the front, side front, back and side back.
4. Allow a hem and cut the slip.
5. Finish the hem.

Half Slip

1. Measure the skirt length from waist to hem.
2. Measuring from the hem of the slip up, place a row of pins at the adjusted waistline.
3. Add a hem allowance at the waist.
4. Measure and stitch an elastic band for the waist.
5. Place the elastic on the skirt and stitch the band.



Before

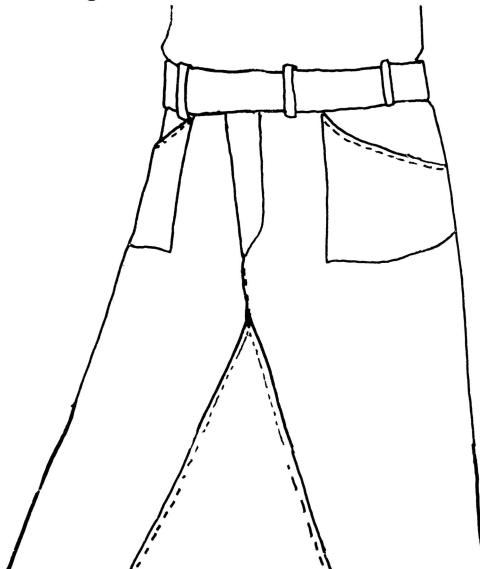


Drawer Liner

1. Measure the drawer to be lined, add seam allowances and make a paper pattern.
2. Cut one layer of face fabric, one layer of flannel and one layer of lining.
3. Rub sachet powder into the flannel.
4. Place pieces right sides together, stitch, turn and press.
5. Trim with ribbon strips.
6. Headrests and padded hangers can also be made.

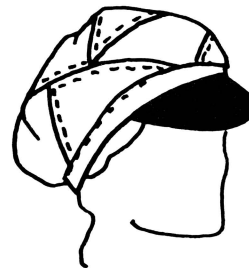
Jeans Skirt

- Measure and cut the jeans to the desired length plus a hem allowance.
- Rip the inside leg seam and the crotch up to the zipper in front and to the yoke in back.
- Lay the skirt flat.
- Pull the seams apart until the opening forms a triangle of desired width.
- Insert paper between the skirt layers and make a pattern for the triangular inset.
- Add seam allowances and cut the triangle from denim.
- Repeat above steps for back.
- Stitch in triangles and hem skirt.



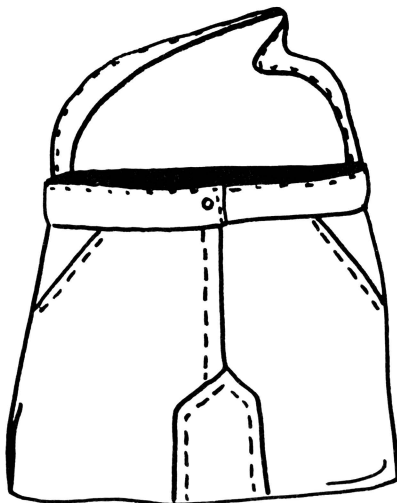
Apron

- Make a paper pattern to fit the individual.
- Rip a pair of blue jeans and sew strips together.
- Cut the pattern.
- Finish apron edges and hem.
- Sew on the pocket.
- Fold the two top corners of the apron in and stitch.
- Make and attach straps.



Cap

Use any commercial pattern to make cap.



Purse

- Cut the jeans approximately 13" down from the waist.
- Rip the inside leg seams and the crotch at the front up to the zipper and in the back up to the yoke.
- Lay the jeans flat and top stitch the point as illustrated. Use coarse thread the same color as the jeans stitching and a 4 stitch length.
- Do the same decorative stitching in the back.
- Turn the jeans inside out and close the bottom.
- Cut the shoulder straps from the jeans legs (two strips $19\frac{1}{2} \times 2\frac{1}{2}$).
- Join the strips together, press, sew the lengthwise edges of the strip together, turn and press.
- Top stitch the finished strap and attach to the jeans.
- Close the top with two neck zipper fasteners that open from the middle of the purse.

Before

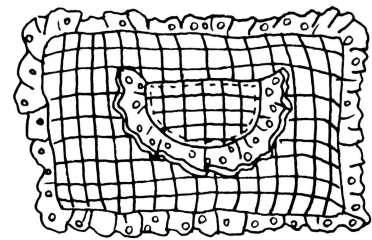


You can create many things from scraps. These are just a few examples.



Fleur Sacs

Make your choice of size and fabric for sacs. Fill with lavender, dried rose petals, favorite pot pourri, or sachet scented stuffing.



Tooth Fairy Pillow

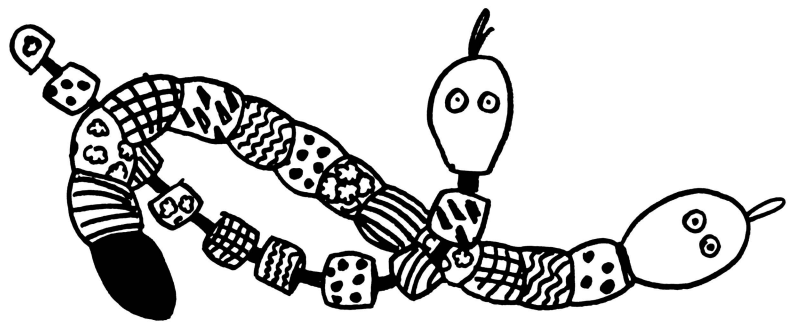
Any size pillow may be made and a variety of fabrics can be used. Attach a small pocket on the back for the tooth fairy's exchange.

Sneaky Snake

1. Cut:

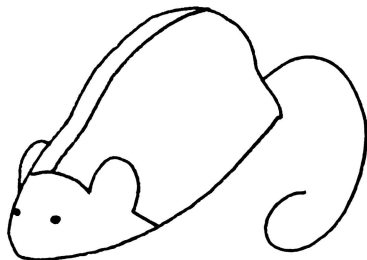
- a. Nine 4 $\frac{3}{4}$ " x 3 $\frac{1}{4}$ " pieces from a variety of colored and patterned scraps.
- b. 2 pieces to form the snakes tail. See illustration.
- c. Two 3 $\frac{3}{4}$ " x 2 $\frac{3}{4}$ " pieces for the head.
- d. Two nickle sized pieces for eyes.
- e. One 4 x 12 inch strip.
- f. One tongue from green felt.

- 2. Fold the 9 triangles with the short ends together and stitch separately using $\frac{3}{8}$ inch seams.
- 3. Shape the head and zig zag the eyes to the head.



- 4. Stitch the strip, turn, press and cut into 1 $\frac{1}{2}$ " lengths.
- 5. Place one strip inside each of the 9 squares, stitch across the end and pull the square right side out by pulling on the 1 $\frac{1}{2}$ " strip.
- 6. Stuff the squares with polyester fiberfill.
- 7. Join the squares together by

- placing the free end of each 1 $\frac{1}{2}$ inch strip into the open end of a stuffed square and stitching the square closed.
- 8. Place the tongue inside the head pieces and stitch, turn and press.
- 9. Stuff the head and join to the squares. Rice can also be used for the stuffing.



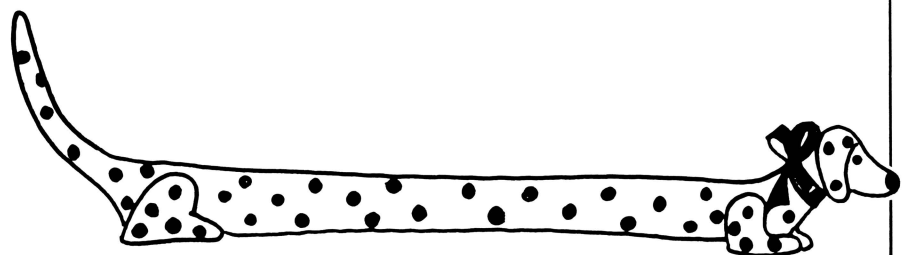
Mouse

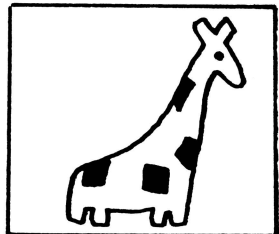
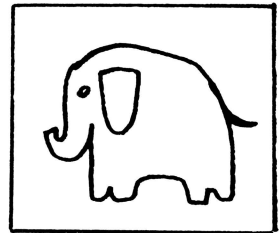
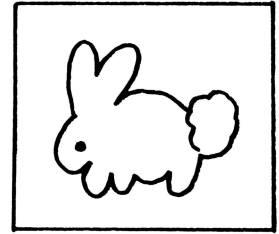
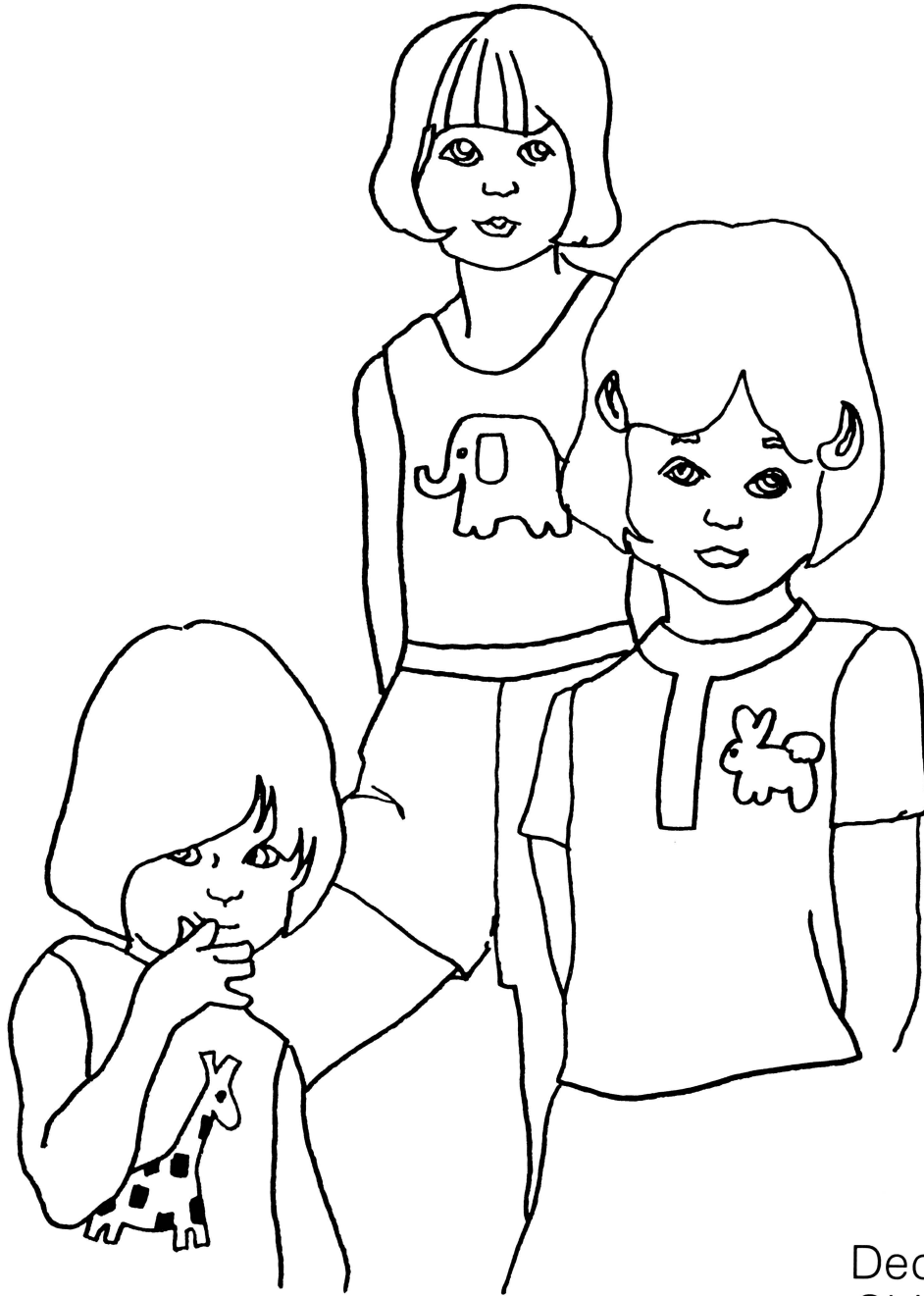
Select a pattern from a counter book or draw your own.

Draft Stopper

Measure the door where drafts come in. Sketch the dogs body making it the length of the door measure plus the tail and head.

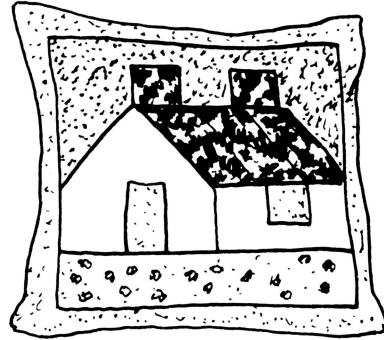
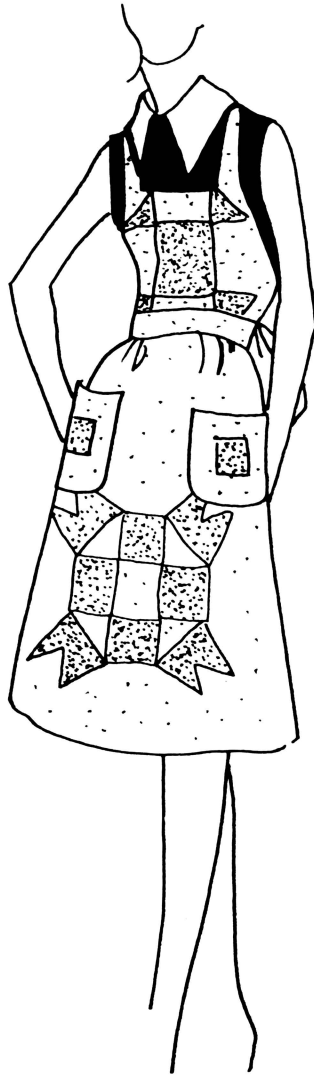
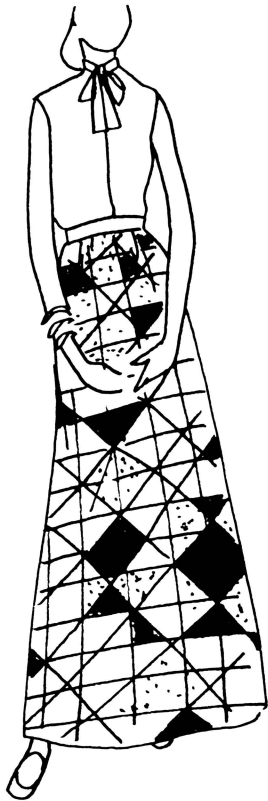
Cut and sew to the body contrasting print to resemble feet, legs and ears. Stitch and turn the dog. Fill with white sand and tie a red ribbon bow at the neck.





Decals for Children's Clothes

Figures can be found for sale in pattern books; you may sketch your own, or trace them from coloring books and similar sources. Either stitch or use press-on materials to apply the decal to the garment.



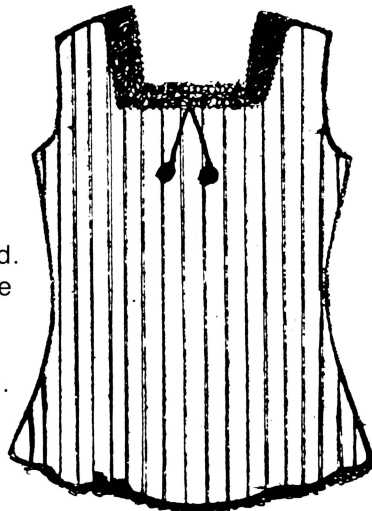
Patchwork

Patchwork patterns may be found in pattern catalogues, magazines and newspapers and perhaps in Grandmother's trunk. The suggestions illustrated are only a beginning of the many ideas you will enjoy.



Stuffed Shirt

1. Select a T-shirt or use one that a child has out grown and doesn't want to discard.
2. Close the armhole or sleeve openings and the neck opening.
3. Stuff with polyester batting.
4. Close the hem opening.



fabricare
MACHINE WASHABLE
DRIP DRY

VOGUE
young fashionables

Labels

Kids like labels, too. Transfer the originals to the recycled garment.

Issued in furtherance of Cooperative Extension Work Acts of May 8 and June 30, 1914 in cooperation with the United States Department of Agriculture. Carl N. Scheneman, Vice President for Extension, Cooperative Extension Service, University of Missouri and Lincoln University, Columbia, Missouri 65201.

The University of Missouri is an equal employment and educational opportunity institution.

University Libraries
University of Missouri

Digitization Information Page

Local identifier MP499-1977

Source information

Format Book
Content type Text with images
Source ID Gift copy not added to collection.
Notes

Capture information

Date captured September 2019
Scanner manufacturer Fujitsu
Scanner model fi-7460
Scanning system software ScandAll Pro v. 2.1.5 Premium
Optical resolution 600 dpi
Color settings 8 bit grayscale
File types tiff

Derivatives - Access copy

Compression Tiff: LZW compression
Editing software Adobe Photoshop CC
Resolution 600 dpi
Color grayscale
File types pdf created from tiffs
Notes Images cropped, straightened, and brightened.