

MISSOURI *Alumnus*



VOL. XXXVI—No. 2

UNIVERSITY of MISSOURI

OCTOBER, 1947



SILICONES HAVE EVEN TEMPERS

The various members of the silicone family all have one remarkable similarity—their sturdy resistance against either very high or very low temperatures.

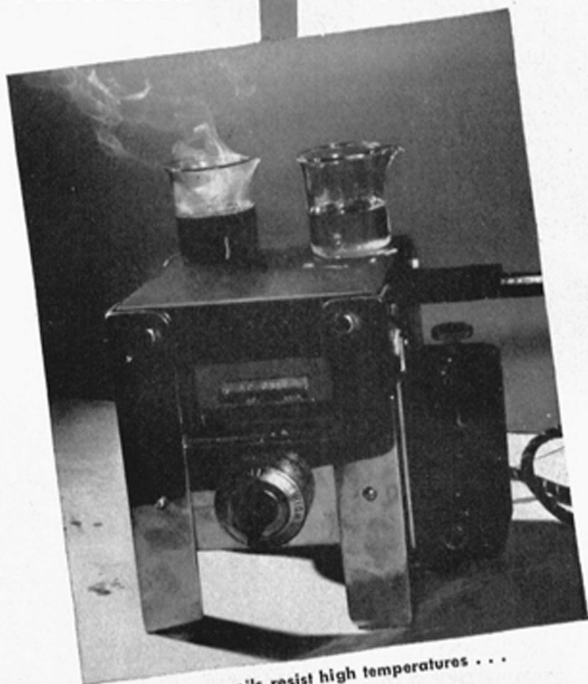
This ability to remain unruffled in tropic heat or antarctic cold has endeared the silicones to all scientists and engineers who are losing sleep over temperature problems.

Flight engineers, for example, have found that the silicone rubber developed through General Electric research is just the thing for gaskets in high-flying gas-turbine engines. Since silicone rubber retains its resiliency over a temperature range from -55 to 520 F, gaskets made of it keep the engine's joints safe and tight against the heat of scalding gases or the cold of outer space.

Plastics engineers have a preference for silicone oils and greases. Applied to hot molds at temperatures up to 575 F (ordinary oils break down long before reaching this temperature), these silicones keep the molded piece from sticking, and thus reduce breakage, save money, and speed production.

In case the names have puzzled you, *silicones* are the compounds made with *silicon*. Silicon is our second-most-common element, and an ingredient of glass and sandy beaches. It's only in the last few years that scientists have begun to realize what silicon can do.

Silicones are one of the many problems occupying the minds of General Electric scientists and engineers. General Electric employs 6,000 engineers and 900 chemists, physicists, and mathematicians—the largest technical staff outside of American colleges and the U.S. Government. This staff is behind every product General Electric makes.



Silicone oils resist high temperatures . . .



... won't clog at low

GENERAL  **ELECTRIC**

The Missouri Alumnus



Published By . . .

The ALUMNI ASSOCIATION OF THE UNIVERSITY OF MISSOURI

In This Issue

New Memorial Union	Page 3
Homecoming	Page 4
On Campus	Page 5
Sports	Page 6
Tiger Tales	Page 8

October, 1947

VOL. XXXVI

NUMBER 2

THE COVER—A drill in formation-marching by the University Band brought the colorfully-attired drum major within the shadow of Jesse Hall's well-remembered dome for this month's cover picture. (Photo by Bill Dye)

Editor

HERBERT BUNKER
Director, Alumni Activities

Managing Editor

W. N. SKOURUP, JR.

Alumni Secretary

THELMA O. WOODS
Business and Advertising

President, Alumni Association
OAK HUNTER

THE MISSOURI ALUMNUS is published monthly except in August by the University of Missouri Alumni Association, 110 Jesse Hall, Columbia, Mo. Entered as second class matter under the Acts of March 3, 1879. Regular subscription price \$3.00 a year; life subscription, \$50.

National representatives—The Graduate Group, Inc., 30 Rockefeller Plaza, New York; Boston, Chicago, Detroit, Los Angeles, and San Francisco.

Members of the Publications Committee—Robert E. Lee (Bob) Hill, chairman; James A. Taylor, Kansas City; Ben F. Seward, Kansas City; Frank Birch, New York City; Harry D. Guy, Dallas, Tex.; Harry Frech, St. Louis.

Chips and Whetstones

County alumni associations of the University of Missouri are now being revived throughout the State. Officers of the general Alumni Association are giving absolute priority to the organization of such groups. We solicit the help of our loyal alumni in getting their job done. The task is urgent. It is important that our country groups be set up and actively working in the interests of the University at once. Every county in Missouri should be organized by the middle of December.

The recent announcement that a Student Union building is at last to be a reality on our campus thrilled students of the University and alumni alike. Our University administrators are to be congratulated upon the realization of this long-cherished dream, and for so adequately meeting one of the deepest needs of our great University. Their vision should be highly commended and their action heartily approved and supported throughout Missouri, not only by alumni and friends of the University but by all right-thinking and serious-minded citizens of the State.

October 17-18 was a great weekend for the Alumni office and its staff. Highlighting events was the reunion of the classes of 1906 and 1907 (report later) and the revival of the annual Presidents Luncheon for alumni officers and district chairmen. A fine luncheon it was—and a pleasant social hour in the home of Dr. and Mrs. Middlebush.

A business conference, prior to the luncheon, was held in the Alumni office, Jesse Hall. Forty alumni officers, together with a number of curators and University officials were present. Mr. Oak Hunter presided. President Middlebush spoke briefly, reporting on the present status of the University and announcing the plans for building our Memorial Student Union. Don McVay explained plans for reviving state-wide active county alumni associations. Brief talks were also made by Senator Allen McReynolds, president of the Board of Curators, Bob Hill, and your director.

Herb Bunker



Mizzou's New Memorial Union

One of the most eagerly awaited projects on the University Campus is about to be a reality. Announcement came at the Kansas State football game from President Frederick A. Middlebush that the erection of a Memorial Union Building, providing recreational, dining, social, and extra-curricular facilities for the 11,439 students now enrolled in the University, will be started during this school year.

The building, which will cost approximately two and one-half million dollars will also provide recreational and social facilities for the University faculty and space for several administrative offices.

President Middlebush made public drawings of the building and floor plans which were prepared by the University architects from ideas and information supplied by a number of University officials who have been making a study of student union buildings on college campuses.

The announcement that the University is prepared to begin actual construction of the building was made by Dr. Middlebush at a meeting of the district officers of the General Alumni Association of the University. Present at that meeting were the Curators of the University who, Dr. Middlebush said, have approved the proposed site and plans for the building.

The structure will be erected on the Memorial Tower site. Dr. Middlebush said, and will be known officially as the Memorial Union Building. He said that the building will have a Memorial Lobby on the walls on which will be placed tablets bearing the names of students and alumni of the University of Missouri who lost their lives in World War II.

According to Dr. Middlebush, there

will be no organized campaign for the purpose of financing the union building. "But," he said, "provision will be made for various types of memorials within the structure to be financed by individual and group gifts donated for such purposes."

Dr. Middlebush said that money for the erection of the building will come from a limited number of gifts available for such use, unrestricted funds received from sources other than state appropriations which have accumulated for this purpose, and funds received from the sale of bonds to be issued to pay part of the construction costs. The revenue bonds will be retired with funds provided by income from the building and by fees collected from students, he explained.

Dr. Middlebush said a letter stressing the critical needs for a union building was sent to the University by Robert E. Byers, President of the Student Government Association. He quoted the letter as saying that a student union building "would provide facilities to serve cultural, social, organizational, and recreational needs of the students to the better advantage of the student body and to the more efficient supervision by the proper University authorities."

This letter was given consideration at the June meeting of the Board of Curators. Dr. Middlebush said.

Dr. Middlebush stressed the fact that the Memorial Union Building will be erected as a part of the whole dormitory, dining and recreational building program on the Columbia campus.

The structure will be comprised of two wings four stories high facing west on Hitt Street. These wings will be connected by the Memorial Tower which was dedicated in November,

1926, honoring the memory of students and alumni of the University of Missouri who lost their lives in World War I.

The main part of the Memorial Union Building will be the north wing. This will extend 130 feet along Hitt Street and will be 200 feet deep. It will contain three ballrooms suitable for use as small auditoriums which will be equipped with serving kitchens so that they may be used for dinners. One of the ballrooms is large enough to accommodate 500 couples for dancing.

It will extend north and south along the entire east side of the wing, and will have a stage in the north end. Another will accommodate 300 couples, and the third is suitable for 100.

There will also be a number of lounges in this wing, one of them 50 by 80 feet, and smaller ones adjoining each of the ballrooms. Card rooms, billiard rooms, music rooms, and meeting rooms will be capable of accommodating as many as twenty different groups at one time.

Ample dining facilities are being provided, including a cafeteria capable of seating 400 persons at one time, a grille, a private dining room, and a sweet shop and fountain with necessary kitchens and serving facilities, all located on the ground floor. Elevators from the main cafeteria kitchen provide service to numerous kitchens and serving rooms on the upper floors making it possible to serve food in various meeting rooms for special occasions. A large serving kitchen adjoining the main ballroom is included in the plans. Numerous coat rooms, waiting rooms, toilets, powder rooms, and small offices are also spaced conveniently on all floors in this wing, and a large book

(Continued on Page 5)

Welcome Alums:

In our efforts to make this year's Homecoming celebration one you will long remember, plans are already being made for your enjoyment and entertainment. As chairman of the committee, I want to extend to all of you a sincere invitation to join us for the 1947 Homecoming.

Our opponents for the Homecoming game will be the Oklahoma Sooners. This crucial game takes place Saturday afternoon, November 15th, so be here to help cheer our Tigers on to Victory. Tentative plans call for festivities beginning on Thursday, November 13th. There will be a parade, mass meeting, and pep rally on Friday afternoon, November 14th. The Homecoming dance, an all school affair, will take place Friday evening. Saturday morning you will have an opportunity to get together with all your old friends at the Coffee Hour program. Registration and information booths will be at the hotels and other central points for your convenience.

Everything possible is being done to provide for your enjoyment, so don't forget, this year's Homecoming, November 13th, 14th, and 15th.

see you then,

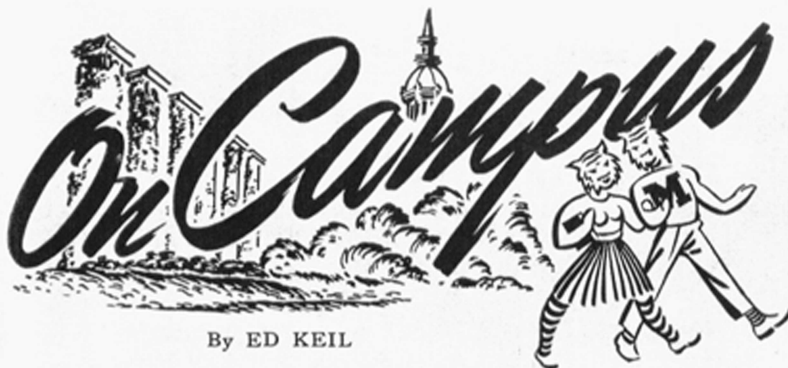
SAM F. LOEB,

Chairman of the
Homecoming Committee



HOMECOMING COMMITTEE—

Left to right: first row: Pat McFarland, Publicity; Harriet Osborn, Coffee Hour; Saurine Lotman, General Secretary; Fredna Parker, Alumni Registration. Second row: Dave Toombs, Pep Rally; Bailey Gallison, Parade; Alfred Einstein, Homecoming Dance; Lyle Wells, Bonfire; Gene Thompson, Decorations; Deacon Parsons, Queen Committee. Back row: Jim Austin, M-men's Reunion; Robert Busse, Finance; Sam Loeb, Chairman.



By ED KEIL

Enter October and the annual mecca to the "Educational Center of the Middle West" has been completed, registration is over, seats have been assigned in all the classes, and a final count of noses made. The result shows another new high in the University's enrollment with the total number of students put at 11,439 by Charles W. McLane, director of admissions. This brings the figure to 1012 above the 10,427 enrolled last year.

Men outnumber women students by four to one with 9,255 men and 2,184 women. The sophomore class is the largest with 3,689 enrolled. Second is the junior class with 3,275 members. The freshman class totals 2,473, and the senior class is the smallest with 1,579 students. Of the total, 7,233 are veterans.

Enrollment is: Agriculture, 2,033; Arts and Science, 4,649; Journalism, 619; Engineering, 1,535; Business, 886; Law, 264; Education, 696; Medicine, 76, and Graduate School, 725.

More than 1,500 students are enrolled in the ROTC cadet corps at the University this year according to Capt. M. T. Wadkins, of the military department. Some new material is expected including a 90 mm. anti-aircraft gun and a Republic P-47 Thunderbolt to be used for training advanced Air ROTC cadets.

Following the Missouri triumph over Kansas State the Student Government Association held their first all-school dance. The music for the dance, called the "Pigskin Promenade," was furnished by Raymond Scott and his orchestra. The event was held in Rothwell Gymnasium amid decorations of black and gold, and was a sellout two days before the dance.

The University of Missouri will be the site of the second annual Intercollegiate United Nations Conference to be held Nov. 7-9. Over 250 student delegates from 41 Missouri universities, colleges and junior colleges are ex-

pected to attend the model conferences and banquet.

Farm and Home Week was held at the University October 28 to 30. Principal speaker for the Farm Week program was former State Senator and president of the Board of Curators, Mr. Allen McReynolds, of Carthage. Mr. McReynolds spoke on "International Affairs and American Agriculture."

Other featured speakers included Frank W. Peck, director of the Farm Foundation of Chicago, and E. G. Cherbonnier. Mr. Peck discussed "Three Measures of Farm Success," and Mr. Cherbonnier's topic was "Are There Lines Across Our Flag."

John W. Vandercook, well-known radio news commentator and writer opened the University lecture series in the University Auditorium when he spoke on "New Hope for Europe." His topic dealt with Europe again on the road to political and economic recovery and with the plight of displaced persons.

"Does Religion Make a Difference?" is to be the theme of the annual Religion in Life Week to be sponsored by the University and Stephens College Nov. 2-6. Sponsored by the Student Religious Council and under the chairmanship of Rev. John Clayton, the program will include convocation at local churches, discussion groups in organized houses at the University and in Stephens organizations, mass meetings, and social events.

(Continued from Page 3)

store and mailing room are shown on the ground floor plan.

Spacious corridors will extend along all floors, and on the first floor a wide promenade will run along the north side of the wing giving entrance to the large lounge and extending back to

HOMECOMING PROGRAM

Friday, November 14

- 12:00 Judging of decorated houses by Gold Key
- 4:30 Parade
- 5:30 Pep Rally and Mass Meeting
- 8:30-12:30 Homecoming Dance featuring Ray McKinley's Band, and Crowning of Homecoming Queen in Rothwell Gym.

Saturday, November 15

- 9:00 Alumni Breakfast at the Teaberry, sponsored by Mortar Board
- 9:30 Alumni Breakfast at Gaebler's Black and Gold Inn for all members of Mystical Seven, QEBH, Bluekey and Druids.
- 11:30 M-Men's banquet in Rothwell Gymnasium with lettermen of 1922 as special guests
- 2:00 M.U.-Oklahoma football game. Queen presentation at the half.
- 8:00-12:00 Free Dance in Rothwell Gym

the main ballroom and its smaller lounge. Numerous stairways and hallways make all rooms easily accessible.

The wing extending south of Memorial Tower will be 60 feet wide and 130 feet long, and will utilize the foundation already constructed there. It will be designed mainly for offices of student organizations, game rooms, hobby rooms, and offices of administrative personnel concerned with student and alumni affairs. It will also contain recreational and social facilities for the faculty, and will contain small dining rooms suitable for private student and faculty organizational dinners. Several small lounges and lobbies, and the usual necessary cloak rooms, toilets, and storage rooms are also included in this section.

A passageway through the Tower connecting the two wings will be provided on the ground floor and the first floor, but the Tower itself prevents this on the second and third floors.

In that area of the campus to the east of the Tower, and lying between the north wing of the Memorial Union and Gwynn Hall, a terrace will be built, with an entrance to the main ballroom opening onto the terrace opposite the north entrance of Gwynn Hall.



By BLAINE CARR
University Sports Publicity Director

Stalcup Opens Cage Drills With Six Lettermen For Squad Foundation

Coach Wilbur "Sparky" Stalcup got his first look at his 1946-47 Missouri basketball squad on October 15 when twenty-two returning members of last season's team began their work-outs. A week later Stalcup issued a call for all candidates without previous experience who might desire to try out for the squad.

Included in the twenty-two veterans are six lettermen from last season, Red Haynes, Thornton Jenkins, Karl Pierpoint, Dan Pippin, Pleasant Smith, and Bob Wachter. These men will probably form the nucleus of the squad which Stalcup hopes will better last year's record of fifteen victories and ten defeats. In addition to his lettermen, Sparky is counting heavily upon Ben Bidewell, a smooth-working guard who was kept out of action all last season by an ankle injury, Don McMillen, Cyril Delay, Jerry Fowler, Tom Hardy, Charles Hartmann, Gus Miller, Ed Nelson, Bob Phillips, Les Perlman, Roy Pilliard, Don Sallee, Don Stroot, Kenneth Shockley, Charles Turner, and Jim Wadleigh.

A newcomer to the coaching staff is Eddie Johnson, a graduate assistant who played under Stalcup at Maryville Teachers' College before the war. Johnson will be Sparky's first assistant and Clay Cooper will again handle the B team.

The Tigers will open the season on December 4, when they meet Westminster College on the Brewer Field House court in Columbia. The schedule also includes a Christmas holiday swing through the East, where the Bengals will tackle New York University, Buffalo University and Northwestern. Preceding this trip will be the Big Six tournament in Kansas City.

The schedule is as follows:

University of Missouri 1947-48 Basketball Schedule

Dec. 4—Missouri vs. Westminster at Columbia

Bengals Win Distance Races

Undeclared in two starts to date the Missouri cross country team, composed of veterans of the last year's conference track and field champions, is aiming its sights on the Big Six conference meet on November 15 at the half of the Kansas State-Iowa State football contest at Ames, Iowa.

The "hill and dalers" met the Iowa State Cyclone squad at Ames, as an added attraction to the Tiger-Cyclone grid tussle, winning. The first victory was over the Kansas team 20-13.

The members of the squad include Gene Madden, St. Louis; Bob Bosworth, St. Louis; Bill Chronister, Charleston; Leonard Morgan, St. Louis; George Quinn, Springfield; and Duane Wolfe, Belleville, Ill.

Dec. 10—Missouri vs. Washington at Columbia

Dec. 13—Missouri vs. Drake at Columbia

Dec. 15—Missouri vs. St. Louis U at Columbia

Dec. 18-19-20—Big Six Tournament at Kansas City

Dec. 27—Missouri vs. N. Y. U. at New York City

Dec. 30—Missouri vs. Buffalo U at Buffalo, N. Y.

Dec. 31—Missouri vs. Northwestern at Evanston

Jan. 5—Missouri vs. Michigan State at Columbia

Jan. 10—Missouri vs. Iowa State at Ames, Iowa

Jan. 12—Missouri vs. Nebraska at Lincoln, Nebr.

Jan. 17—Missouri vs. Kansas at Columbia

Jan. 31—Missouri vs. Oklahoma at Columbia

Feb. 4—Missouri vs. St. Louis U at St. Louis

Feb. 7—Missouri vs. Kansas State at Columbia

Feb. 9—Missouri vs. Kansas at Lawrence

Feb. 14—Missouri vs. Nebraska at Columbia

Feb. 16—Missouri vs. Iowa State at Columbia

Tigers Wallop K-State In Opening Tilt Of 1947 Conference Race

Missouri's Tigers, opening the 1947 Big Six Conference race, completely overwhelmed Kansas State's hapless Wildcats, 47-7. Coach Faurot's men scored in every quarter, and virtually at will.

Forty five men saw action for the Black and Gold, with every conceivable combination of players given a trial. Even such tactics failed to aid the Kansas State cause, and their only score came late in the final quarter with Missouri's last bench-riders in the lineup.

Seven different Tiger backs scored touchdowns, while Bob Dawson, full-back-place kicker, added five conversions out of seven tries.

It took but ten plays after the opening kickoff for MU to score the first time, after only two minutes and seven seconds had elapsed in the opening quarter.

Game Statistics

	K-STATE	MO.			
First downs	6	19			
Net yards gained rushing	16	466			
Forward passes attempted	35	16			
Forward passes completed	12	3			
Yards forward passing	165	68			
Forwards intercepted by	1	3			
Yards gained run-back					
interceptions	14	21			
Punting average	38	36			
Total yards all kicks					
returned	232	84			
Opponent fumbles					
recovered	2	3			
Yards lost by penalties	125	155			
The Score by Quarters					
Kansas State	0	0	0	7	7
Missouri	13	7	20	7	47

Feb. 21—Missouri vs. Kansas State at Manhattan

Feb. 23—Missouri vs. Colorado at Boulder

Mar. 1—Missouri vs. Colorado at Columbia

Mar. 5—Missouri vs. Oklahoma at Norman

Mustangs Drop Tigers In Hard Fought Game On Cotton Bowl Field

A triple-threat halfback and a hot, muggy night proved too much for the Missouri Tigers as they bowed to the Mustangs of Southern Methodist University, 35-19.

Some 27,000 spectators saw the Tigers hold their own in the first three quarters, then wilt before the Texas attack led by Doak Walker. The Bengals, who were a three-touchdown underdog, dominated play in the first period and forced the Mustangs to play the Missouri game.

The hosts scored first but Missouri struck back by recovering a fumble on the S.M.U. 20 and driving Ed Quirk through for the tying score.

Then Walker stuttered 76 yards in a sparkling punt return that gave the Mustangs the lead once again. In the third period Walker again flashed scoring punch as he passed to Parker for the third S.M.U. touchdown.

The Tigers came to life after the third Mustang score and fought back with two quick touchdowns. Dick Braznell passed to Hulse for the second Bengal tally, climaxing a 71-yard drive.

Braznell completed Tiger scoring when he plunged over from the three-yard line after the Bengals had blocked an S.M.U. punt.

For Missouri Bus Entsminger was the standout and Ed Quirk followed a close second. Both men shone on the offense as they continually gained through the S.M.U. forward wall.

On defense Bob Fuchs, Missouri center, came into his own as he took part in almost every tackle from his line backer spot.

The Statistics

	M.U.	S.M.U.
First downs	14	12
Net yards rushing	231	230
Yards gained passing	75	71
F'wd passes attempted	15	11
F'wd passes completed	4	5
Forward passes intercepted by	2	0
Yards returning pass interceptions	42	0
Average yards punts	35	40.5
Yards returning kicks	28	76
Ball lost on fumbles	3	1
Yds. lost on penalties	20	5

1947 Varsity Schedule

Missouri—19	St. Louis U.—0
Missouri—7	Ohio State—13
Missouri—19	S.M.U.—35
Missouri—21	Colorado—0
Missouri—47	Kansas State—7
Missouri—26	Iowa State—7
Missouri—47	Nebraska 6
Nov. 8—Duke at Durham, N. C.	
Nov. 15—Oklahoma Here	
(Homecoming)	
Nov. 22—Kansas There	

Leaders of the Black and Gold



Verlie Abrams, left, veteran guard from Webb City, and Roland Oakes, big end from Winnebago, Illinois, are the Co-Captains of the Tiger football team this year. They are the only holdovers from last year's starting line.

Abrams is a senior in the College of Arts and Science, and is a veteran of three grid campaigns in 1941, 1942, and 1946. He is an Army veteran with three years service.

Verlie adds the spark to the center of the line, and his courageous play gives a thrill to many a Tiger fan. He has been picked twice to Honorable Mention on the All Big Six team. He began his football career as a four letterman at Webb City High School, and at Missouri he received his freshman numeral in 1940. "Abe" holds varsity awards for the years '41, '42, and '46. He is married and has two children.

Oakes, an All Big Six selection in both 1945 and 1946, is a fleetfooted pass receiver and a fine defensive end.

A junior in the College of Arts and Science, he is 21 years old, and played his prep ball at Winnebago, Ill., high school.

Tigers Down Colorado With Potent Defense On Enemy Gridiron

Tiger fullback Bob Dawson had a perfect day against Colorado, kicking three perfect conversions as the Bengals downed the Buffaloes 21-0.

First score for the Black and Gold came on a 48-yard joint by Quarterback Bus Entsminger in the second period, when he went off-tackle through the entire opposition. The hosts held Missouri scoreless then until late in the third quarter, when the visitors drove 75 yards for the counter.

Missouri squeezed in a last touchdown with 20 seconds remaining in the game. Bonnett intercepted a Colorado pass and was downed on the enemy 36-yard line. Entsminger then passed to Carras in the end zone, fifty yards in the air, for the score.

Bill Day's accurate punting again was a great aid to the Tiger cause as he put the Buffs with their backs to the wall repeatedly.

Game Statistics

	M.U.	C.U.
First downs	9	13
Net yards rushing	183	155
Yards passing	82	102
Forward passes attempted	10	25
Forward passes intercepted by	4	0
Yards returning interceptions	49	0
Average yards punts	43	38
Yards returning kicks	102	103
Ball lost on fumbles	2	1
Yards lost on penalties	45	20

SPORTSMEN

TRADE NOW

Motors - Guns - Tackle

**ROBERTS AND GREEN
HARDWARE CO.**

Columbia, Mo.



By PAT LYNG

1885

We enjoyed hearing from RICHARD H. PHILLIPS, T.E. '85, C.E. '90, who is living at 3232 Rumson Rd., Cleveland Heights, Ohio.

1887

GEORGE H. BEASLEY, PeP., B.S., B.P., '87, and Mrs. Beasley, Kansas City residents, were honored at a reunion of 100 graduates of the old Columbia Normal Academy and Business college. The academy was established in 1895 by Mr. Beasley and two fellow graduates that year at the University. Mr. Beasley was owner and president of the institution and Mrs. Beasley was the dean of women when the college's facilities were rented to the University in 1911 and became a fore runner of the present education college.

1888

We were happy to hear from L. N. GRAY, PeP. '88, L.B. '91, A.M. '97, who is living at the Rosslyn Hotel, Los Angeles, Calif.

1892

GEORGE W. BRUCE, LL.B. '92, Judge Seventh Judicial District, Chambers at Montrose, Colo., writes he was interested in an article which appeared in the *Alumnus* about LOUIS N. B. GRAY, PeP. '88, L.B. '91, A.M. '97. Mr. Gray and Mr. Bruce were at the University together in '88, '89, '90. Mr. Bruce has lived in western Colorado more than 40 years and has held his present post for nearly 22 years.

1897

DR. CHARLES F. ADAMS, B.S. in Agr. '97, is with the Division of Health of Missouri, Jefferson City, Mo.

EDGAR EWING BRANDON, A.M. '97, dean emeritus, College of Liberal Arts, professor emeritus of Romantic languages at Miami University, Oxford, Ohio, writes "I thank you most cordially for the photo of the '97 reunion. As I was getting my A.M., I did not know well the A.B. graduates, but I recognize readily the old fine blasted pillars of the columns in the background and they recall many pleasant memories."

The address of TOM B. MOBLEY, LL.B. '97, is P. O. Box 85, Kennett, Mo.

GEORGE R. WILKERSON, B.L. '97, LL.B. '99, Hughesville, Mo., was a visitor at the University last month.

1899

Many thanks to ROY H. PINKLEY, B.S. in E.E. '99, E.E. '03, who has been a continuous subscriber to the *Alumnus* for the past 25 years.

We extend deepest sympathy to the family of WALTER C. GOODSON, LL.B. '90, Macon, Mo., who died Sept. 27.

1900

Our deepest sympathy is extended to the family of RUDOLPH A. KLEINSCHMIDT, B.L., LL.B. '00, who died in Tulsa, Okla., Sept. 3.

1901

OTTO TIETJENS, '01, and Mrs. Tietjens stopped to visit the University recently while traveling from their home in St. Louis, Mo., to Arrow Rock State Park.

1902

W. D. BANNISTER, A.B. '02, is principal of Oxnard Union High School, Oxnard, Calif.

Many thanks to JAMES A. POTTER, A.B. '02, LL.B. '05, of Ragland, Otto, Potter & Embry, attorneys and counselors at Law, Central Trust Bldg., Jefferson City, Mo., for his renewal subscription to the *Alumnus*. Mr. Potter was for many years a member of the Board of Curators.

The address of GEORGE L. MOREHEAD, B.S. in M.E. '02, is 410 Lodge Lane, Elkins Park, Pa.

1903

We were sorry to hear of the death of DR. C. B. RODES, A.B. '03, A.M. '05, who died recently in Butte, Mont. Dr. Rodes was well known as a diagnostician and specialized in the fields of internal medicine and X-ray.

The address of LAWRENCE McDANIEL, '03-'05, is Municipal Courts Bldg., 1320 Market St., St. Louis, Mo.

RICHARD H. SEEVERS, '03-'04, '05-'07, '08-'09, is living at 114 S. 37th St., Omaha, Nebr. Mr. Seevers is a train crew dispatcher with the Union Pacific Railroad Co. in Omaha.

Many thanks to DR. C. A. JOHNSON, A.B. '03, M.D. '04, for his renewal subscription to the *Alumnus*. Dr. Johnson's address is Box 508 Ardmore, Okla.

We have learned from a letter from Prof. Robert Jones, that WILLIAM C. MATTHEWS, '03-'08, is entomological artist at Illinois University, Urbana, Ill.

1904

COL. W. J. CARRINGTON, A.B. '04, former chief of surgical service at Shick General Hospital, Clinton, Mo., died recently. We extend deepest sympathy to his wife, and daughter, Mrs. Leon Marshall, McCorkle, the former MARY CATHERINE CARRINGTON, B.J. '38.

We extend deepest sympathy to the family of WILLIAM F. SCHUERMEYER, LL.B. '04, who died Aug. 13. Mr. Schuermeyer was a lawyer in Tulsa, Okla.

The address of FRED B. KYGER, M.D. '04-'05, gynecology specialist, is 510 Professional Bldg., Kansas City, Mo.

Mrs. Bert Conner, the former CORONNA MOORE, '04, is living near Harrison, Ark.

We extend deepest sympathy to the family of WILLIAM F. SCHUERMEYER, LL.B. '04, who died this summer at Rochester, N. Y.

SCOTT P. STEWART, '04-'05, has moved from Provo, Utah, to 454 3rd Ave., Salt Lake City, Utah.

1905

The address of Mrs. Richard R. Russell, the former MILDRED LEWIS, A.B. '05, B.S. '05, A.M. '07, is 1309 N. Alta Vista, Hollywood, Calif.

We were sorry to learn of the death of Mrs. Thomas D. Jones, mother of Mrs. Earl Nelson, the former EDNA B. JONES, A.B., B.S. '05, St. Louis, Mo., Mrs. James T. Gibbs, formerly ESTHER JONES, A.B. '21, Washington, Mo., and Mrs. A. Davis Elkins, formerly JULIA JONES, A.B. '22, of St. Louis, Mo. We extend deepest sympathy to the family of Mrs. Jones.

JUDGE REDMOND S. COLE, A.B. '05, A.M. '06, and Mrs. Cole, the former MARY T. CROSS, B.S. in Ed. '08, are living near Tulsa, Okla. Judge Cole is a prominent attorney of Tulsa.

W. H. CHANDLER, B.S. in Agr. '05, A.M. '06, Ph.D. '14, is assistant dean and professor of horticulture at the University of California, Los Angeles, Calif.

1906

JOHN V. GOODSON, A.B. '05, LL.B. '08, lawyer, Masonic Bldg., Macon, Mo., writes, "You send me little ditties

For money that I owe,
So please accept the check
For reap of the seed you sow."

FRANK M. NASH, B.S. in E.E. '06, and Mrs. Nash of Mt. Gilead, N. C., visited the *Alumnus* office recently. Mr. Nash is manager and treasurer of the Service Growers Association at Mount Gilead.

JAMES HERMAN CRAIG, A. '06, author of "Kettle Drums and Tom-Toms", is living at 420 Hoyt Ave., El Monte, Calif.

CHESTER STARR, B.S. in Agr. '06, is with the Missouri Farm Bureau Federation, 208-210 E. Capital Ave., Jefferson City, Mo.

Mrs. Arnold Fry, formerly LOUISE ARNOLD A.B. '06, is living in Carmel, Calif.

1907

We thank HARRY I. HIMMELBERGER, '07-'09, of Himmelberger-Harrison Lumber Co., Cape Girardeau, Mo., for his contribution to the Alumni Fund.

The new address of EMILY McGUIRE SMITH, A.B. '07, is 5200 Waterman, St. Louis, Mo.

ROBERT N. DENHAM, LL.B. '07, has been appointed as general counselor to the National Labor Relations Board. Mr. Denham lives in Chevy Chase, Md.

CLARENCE J. PRIMM, A.M. '07, is living at Mesick, Mich.

The address of CHESTER A. MARR, LL.B. '07, is 1460 Northwestern Bank Bldg., Minneapolis, Minn.

The office of RAY ELMER LEE, LL.B. '07, of Lee, Ferrall & Miller, Attorneys at Law, is at 322-326 Hynds Bldg., Cheyenne, Wyo.

There are three **E**s in telephone

One is for **E**verybody

One is for **E**verywhere

One is for **E**fficiency

TELEPHONE SERVICE is for everybody, everywhere. And the thing that makes you like it and want to use it is efficiency — with courtesy.

It's the tone of voice, the warmth and friendship, the helpfulness which you have come to expect of telephone people.

The Operator reflects it when she puts through your call promptly and courteously. The girl in the Business Office shows it when she goes out of her way to take care of your needs. The Installer practices it when he brings willingness and good nature, as well as a telephone, to your home.

It all adds up to pleasing service for you — from many thousands of telephone people, all along the line.



BELL TELEPHONE SYSTEM

All-American Choice for "time out"



*The pause
that refreshes
5¢*

COCA-COLA BOTTLING CO.

B. W. TILLMAN, B.S. in Agr. '07, is with the St. Clair County Farm Bureau, Belleville, Ill.

1908

It was nice to hear from Mrs. R. J. Foster, the former ALICE JOHNSTON, A.B. '08, who is living at 670 42nd Ave., San Francisco, Calif.

We were happy to hear from Mrs. Hammond, the former LOUISA MAIRS, A.B. '08. JUSTIN HAMMOND, B.J. '37, is publisher of the paper of Corona, Calif. Mrs. Hammond writes that they have recently become acquainted with TOM PARKER, B.J. '14, of the Los Angeles, Calif., Times.

ALLEN L. OLIVER, A.B. '08, LL.M. '9, Cape Girardeau, Mo., attorney, has been appointed chairman of the Missouri State Chamber of Commerce Constitution Day Committee in cooperation with the National Constitution Day Committee of Indianapolis, Ind., who suggested State Chamber sponsorship for Missouri.

One of the international oat producing champions of this year was EARL W. TOBIEN, '08-'10, who raised one hundred bushels per acre on his farm near Seneca, Mo.

1909

Mrs. J. C. Parrish, the former MARY ALICE HANNA, A.B. '09, B.S. in Ed. '11, is living at 206 West State St., Vandalla, Mo. MAURICE HICKLIN, A.B. '09, B.J. '13, is professor of English in the Division of Language and Literature, which includes courses in English and foreign languages, at Humboldt State College, Arcata, Calif.

1910

JAMES A. JACKSON, A.B. '10, formerly president of the Continental Bank & Trust Co., N. Y., has been elected to the board of directors of the American Overseas Airlines. Mr. Jackson is also a director of the Guardian Life Insurance Co., N. Y. His address is Guardian Life Insurance Co. of America, 120 Broadway, New York, N. Y.

CHARLES F. CURRY, C.E. '10, Kansas City, Mo., real estate executive, recently was named a member of the sixteenth circuit court judicial commission.

GEORGE C. GUNDLACH, B.S. in C.E., writes, "George C. Gundlach, Mrs. George S. Gundlach, formerly JESSIE SHERMAN, '07-'10, became engaged on the campus Jan. 9, 1907—married in 1910, 40th year of romance—see what co-education does?"

DR. H. H. SHACKELFORD, A.B. '10, A.M. '13, is practicing medicine at 2903 Olive Street, St. Louis 8, Mo.

Mrs. C. C. Wagner, the former KATHERINE E. PREHN, A.B., B.S. '10, A.M. '11, is living at 7337 Pershing Ave., St. Louis, Mo.

Many thanks to ALEX F. SACHS, B.S. in C.E. '10, for his renewal check to the *Alumnus*. Mr. Sachs is engaged in building work with offices at 15 W. 10th St., Kansas City, Mo.

Many thanks to H. B. HILL, A.B. '10, LL.B. '12, for his renewal subscription. Mr. Hill writes, "Say, it's been a long time since you have indicated in the *ALUMNUS* that I am still among the living in Shamrock, Tex. It's almost 35 years since I left the University, but the old school is still very real to me and Mrs. Hill. Mrs. Hill is the former OPAL CLARK, '08-'11."

HERMAN B. HILL, A.B. '10, LL.B. '12, and Mrs. Hill, the former OPAL CLARK, '08-'11, of Shamrock Tex., visited the University Alumni office recently.

ANDREW H. KISKADDON, A.B., LL.B. '10, is General Counsel for the St. Louis Southwestern Railway Lines, Cotton Belt Bldg., St. Louis, Mo.

1911

It is with deep regret that we report the death, on July 15 of Mrs. John L. Gerig, the former VIANTHIA SAVANNAH GRIM, '11. Mrs. Gerig is the author of a volume entitled *Miscellaneous Poems* as well as many other single poems. Her biography may be found in *Principal Women of America*, volume two, London, England, 1936, pp. 122-123. JOHN LAWRENCE GERIG, A.B. '09, A.M. '09, LL.D. '41, is at Columbia University in New York City, in the department of romance languages.

The address of VIRGIL SURBER, B.S. in E.E. '11, is Box 707, Clermont, Fla. Mr. Surber has recently moved from Akron, Ohio.

OSCAR E. RILEY, B.J. '11, A.B. '12, has moved from New York, N. Y., to 244 Wilde Ave., San Francisco, Calif.

1912

SIDNEY M. SKINNER, B.S. in Agr. '12, lives at 420 Algonquin Place, Webster Groves, Mo.

The address of HENRY N. ESS, LL.B. '12, of Watson, Ess, Grover, Barnett, Whitaker & Barnett, is 1500 Dierks Bldg., Kansas City, Mo.

Many thanks to MYRON WITTERS, A.B. '12, LL.B. '14, of 2100 Plymouth Circle, N.W., Washington 12, D. C., who has renewed his *Alumnus* subscription.

Mrs. Charles C. Byers, the former LOUISE STIPP, B.S. in Ed. '12, is living at 112 W. 61st Terrace, Kansas City, Mo.

ELMER C. ROBINSON, B.S. in E.E. '12, is manager Distribution Division, Century Electric Co., St. Louis, Mo.

ALBERT R. WATERS, C.E. '12, is president of The Carter-Waters Corporation, 2440 Pennway, Kansas City, Mo.

ANNA C. McBRIDE, A.B. '12, B.S. in Ed. '12, A.M. '13, has returned to Pittsburgh, Pa. She has been living in Webb City, Mo.

The address of Mrs. H. P. Harner, the former SETIMA SCHEMBER, A.B. '12, is 5643 Meade Ave., San Diego, Calif.

1913

Many thanks to ERWIN E. SCHOWENGERDT, LL.B. '13, who sent in his renewal subscription to the *Alumnus*. Mr. Schowengerdt is an attorney with offices in the Buder Building in St. Louis, Missouri.

The address of L. M. DRUMM, B.S. in Agr. '13, is Richsburg Road, Hattiesburg, Miss.

T. K. KRUSE, A.B. '12, A.M. '13, Ph.D. '18, is with the School of Medicine, University of Pittsburgh, Department of Physiology and Pharmacology, Pittsburgh, Pa.

We were sorry to learn of the death of Mrs. Robert H. McCullagh, the former MARGARET D. WOODWORTH, A.B. '13, who died early this year at her home at 154 E. Montecito, Sierra Madra, Calif.

C. O. HANES, A.B. '13, is living at 722 Cliff Drive, Jefferson City, Mo.

JAMES G. MAY, B.J. '13, is with the Dispatch Printing Co. of Columbus, Ohio. His home address is 123 Olentangy St., Columbus.

ROY ALLEN DRUM, B.S. in E.E. '13, is secretary and manager of the Ward Ice Industries, 10th and Grand Ave., Fort Smith, Ark.

1914

We have received word that Mrs. Thomas R. Pick, the former LUMMIE LYNCH, A.B. '14, B.S. in Ed. '17, died Sept. 23 in Springfield, Ill. We extend deepest sympathy to the family of Mrs. Pick.

H. EMMET SLUSHER, '14, is president of Missouri Farm Bureau Federation, Lexington, Missouri.

F. L. HISAW, A.B. '14, B.S. in Ed. '15, A.M. '16, LL.D. '38, is Assistant Professor of the Biological Laboratories of Harvard

DeSoto

Cadillac Plymouth

Our shop is fully equipped for complete mechanical service on all makes of cars.

Gasoline and Oils
Washing and Lubrication
Tires and Tubes
Storage

MISSOURI
MOTOR CO.

15 N. 7th St. Dial 3163

Since 1921

THE
TIGER BARBER SHOP
IS NOW
AIR-CONDITIONED
114 South 9th Street

THE
DANIEL BOONE

A Fireproof Hotel



Make your Columbia headquarters here. Clean, comfortable rooms and prompt service are our specialty. You will enjoy the delicious food in our air-conditioned coffee shop. Wire, write, or phone for reservation. Rooms, \$2.00 up.

Frank W. Leonard,
Manager

University, 16 Divinity Ave., Cambridge, Mass.

CLAUDE B. CROSS, A.B. '14, of Wither-ton, Cross, Park & McCann, lawyers, has his offices in the Tremont Bldg., Boston, Mass.

1915

The home address of RUFUS S. RAMEY, A.B. '15, and Mrs. Ramey, the former FRANCES M. MERRIWETHER, A.B. '17, is 3501 Belmont Blvd., Nashville, Tenn.

DONALD S. LIBBEY, B.S. in B.A. '15, A.M. '22, is superintendent of Carlsbad Cavern National Park, in New Mexico.

FRANK P. BRIGGS, B.J. '15, of Macon and DRU L. PIPPIN, B.S. in Agr. '23, of Waynesville, Mo., have been appointed as Missouri's two conservation commissioners to succeed men whose terms have expired.

The home address of DR. W. L. BROSIUS, A.B. '15, is 2349 Leslie Ave., Detroit, Mich.

CHESTER R. LONGWELL, A.B. '15, A.M. '16, LL.D. '40, is on the faculty of Yale University, New Haven, Conn.

1916

E. J. BURGER, B.S. in E.E. '16, at one time superintendent of the City Light and Traction Co. in Sedalia, Mo., and now vice-president and manager of Lorain, Ohio, division of the Ohio Public Service Co., returned recently from Japan where he spent four and a half months on a government mission.

BEVERLY PITTS, '16, is with the American National Bank, 624 Felix St., St. Joseph, Mo.

1917

Mrs. John Dos Passos, the former KATHERINE SMITH, B.J. '17, of Provincetown, Mass., died in an auto accident near Wareham, Mass., Sept. 15. With writer Edith Shaw, Mrs. Dos Passos wrote "The Pri-

vate Adventure of Captain Shaw," a Cape Cod romance. She also wrote many articles and a serial, "Fate on Summer Street" which appeared in *Woman's Home Companion*.

Mrs. Edward E. Gray, the former VIRGINIA STEWART, A.B. '17, of 1259 East 22nd St., Eugene, Ore., writes, "I surely do enjoy keeping up with my old friends through the *Alumnus*. Best of luck to Missouri this year! Wish I could attend a few games. Maybe I can when my 12 year old son gets a little closer to college."

MARY SUE HOPKINS, B.S. in Ed. '17, A.M. '30, is living at 202 Broad Street, Warrensburg, Mo.

Many thanks to GEORGE H. KREEGER, B.S. in Agr. '17, for his subscription to the *Alumnus*. Mr. Kreeger's address is 1531 Hardy, Independence, Mo.

The address of WILLIAM C. PRESTON, A.B., B.S. in Ed. '17, and Mrs. Preston, the former ELOIS MAE STEVENSON, A.B. '17, is R.F.D. No. 7, Akron, Ohio.

FRANK W. HAYES, A.B. '17, is newly elected chairman of the State Democratic Committee, Higgenfritz Bldg., Sedalia, Mo.

EULA JAMES, A.B. '17, A.M. '18, writes, "I am still engaged with the problems incidental to personnel work with the staff of National Headquarters for the American Red Cross, Washington, D. C."

T. M. DEAL, B.S. in Ed. '17, has moved from Cedar Rapids, Ia., to Indian River Drive, Ancona, Fla.

W. C. PRESTON, A.B., B.S. in Ed. '17, is general agent of the Mutual Benefit Life Insurance Co., 431 First-Central Tower, 106 S. Main St., Akron, Ohio.

1918

The law offices of SAMUEL H. LIBERMAN, LL.B. '18, are located at 705 Olive St., St. Louis, Mo.

1919

COL. RUSSELL G. BARKALOW, '19-'20, is assigned to Headquarters, Alaskan Department, Office of Chief of Staff, Fort Richardson, Alaska.

E. PAUL SMITH, '19-'20, '21-'22, president of the St. Louis Federal Savings and Loan Association, was elected to the Board of Directors and the Executive Committee of the United Savings and Loan League at their annual convention in San Francisco, Calif., recently.

MARY LANSING, B.S. in Ed. '19, is

manager of the new Peck & Peck Store of Kansas City, Mo. The shop is located at 4752 Broadway in Kansas City.

VON L. BAKER, '19-'21, is claims attorney for St. Joseph Railway, Light, Heat & Power Co., St. Joseph, Mo. Mrs. Baker is the former LAURA M. SIMPSON, '20-'21. Their son, Wayne is enrolled in the University.

The offices of DR. HYMAN RUBINSTEIN, A.B. '19, are located at 8415 4th Ave., Brooklyn, N. Y.

1920

JOHN CALVIN NAYLOR, A.B. '20, is vice-president of the Pet Milk Company in St. Louis, Missouri.

O. B. PRICE, B.S. in Agr. '20, A.M. '22, has been promoted by N. Y. Central R. R. to general agricultural and livestock agent with headquarters at Rochester, N. Y.

1921

HARRY C. BAUER, '21-'23, has been named Director of Libraries, and Professor of Librarianship at the University of Washington in Seattle. He will serve on the faculty of the School of Librarianship, teaching courses in administration. In Seattle, Mr. Bauer is a member of the Mayor's committee on salacious literature, the Seattle Municipal League, and the University Kiwanis Club.

CHARLES E. BROWN, B. S. in Agr. '21, is manager of the Grand Rapids, Mich., branch of the Mutual Life Insurance Co. of New York. Mrs. Brown is the former HENRIETTA STEWART, B.S. in Ed. '21, M.A. '32.

Many thanks to HOWARD T. BROCK, LL.B. '21, for his recent check for the *Alumnus*. Mr. Brock lives at Lee's Summit, Mo.

THORNTON C. CASH, A.B. '21, is with the Humble Oil & Refining Co., Box 2025, Tyler, Tex.

T. P. HALLEY, B.S. in Eng. '21, is district manager of the Southwestern Bell Telephone Co., St. Louis, Mo. Mr. Halley lives at 7479 Kingsbury, St. Louis.

PHIL R. SIMPICH, '21-'23, is living at 405 S. Garth, Columbia, Mo.

WALTER J. HODGE, '21-'24, is vice-president of the Norton-Lasler Company, Inc., 466 W. Superior, Chicago, Ill. Mr. Hodge lives at 2434 Balsam Rd., Highland Park, Ill.

Natural Gas

is your

QUICK,

CLEAN,
ECONOMICAL

SERVANT

WELCOME GRADS!

**MISSOURI
UTILITIES
COMPANY**

706 Broadway Dial 5329



Your First Stop for DELICIOUS FOOD
DINNERS :: :: LUNCHEONS
Fountain Service

The Southern Air

Junction Highway 40 & 61

Wentzville, Missouri

1922

GEORGE L. WILLIAMS, A.B. '22 Kansas City, Mo., was a recent visitor at the Alumni Office. Mr. Williams was a member of the two championship basketball teams of 1920 and 1921. He was also on the track team in '20 and '21.

CRAMER W. LAPIERRE, '22-'24, is with the American Machine and Foundry Company as vice-president in charge of engineering. His responsibilities are company-wide, covering engineering policies of all divisions. He makes his headquarters in the company's New York office, 60 Beaver Street at William.

Many thanks to DR. HERBERT H. SCHMIDT, A.B. '22, of Marthasville, Mo., for his renewal subscription to the *Alumnus*.

FRANCES GRINSTEAD, B.J. '22, A.M. '28, of Parkville, Mo., was named secretary of Missouri Women's Press Club in Jefferson City.

Many thanks for the renewal subscription of DR. L. MILSON, A.B. '22, 311 Northern Bldg., Green Bay, Wis.

CLYDE H. DUNCAN, '22-'26, is advertising manager of the *Alva Review-Courier*, Alva, Okla.

THOMAS P. HEADEN, '22-'24, is deputy director of the office of information control with the U. S. military government in Germany. Mrs. Headen, formerly JOSEPHINE E. MILES, '22-'24, and children have joined Mr. Headen in Germany. Mr. Headen will direct control of Germany's newspapers, magazines, books, radio and other information media.

1923

BENTON M. LEE, A.B. '23, A.M. '24, recently resigned as vice-president of the Valley National Bank, Phoenix, Ariz., to establish the Investment Securities firm of Benton M. Lee & Co., Security Bldg., Phoenix. His father, the late ILUS M. LEE, was also graduated from the University with an LL.B. in '99.

MAJORIE ROBERTS, B.S. in Ed. '23, is teaching in Eugene, Mo.

We were happy to visit with Mrs. George B. Lewis, the former HELEN L. MORROW, A.B. '23, B.S. in Ed. '23, of 210 S. Dickerson, Palmyra, Mo. Mrs. Lewis' son, George, has enrolled in the University.

JOHN L. OLSON, B.S. in Agr. '23, is a grove caretaker in Dundee, Fla. His home address is Box 186, Haines City, Fla.

We enjoyed hearing from WILFRED F. LONG, '23-'28, of S. N. Long Warehouse, Ninth and Gratiot, St. Louis, Mo. Mrs. Long is the former KATHERINE BARNES, B.S. in Ed. '29.

Mrs. C. G. Fairchild, the former VIVIAN MORROW, B.S. in Ed. '23, is living near Austin, Tex. Her address is route 5, Box 97, Austin.

From RALPH ALAN McCANSE, A.B. '23, A.M. '25, University of Wisconsin, English Department, Extension Division, Madison, Wis., comes this poem entitled "Hill Hunger" (The Missouri Ozarks) Any Season.

"When all my waiting's over, I'll go once more

And breast the slopes and hear the Bob-white call.

Will it seem strange if Beauty then restore My soul as though I'd never been gone at all?

"I shall forget this interval of sighs, This fear of lost communion ever and aye Scanning the woods and bluffs with grateful eyes:

Old peace restored! And I so long away! "There dog-wood and faint red-bud border the stream,

I'll ford the shoals, and follow the ridges turning;

And why should Ozarks woods and hills a dream

Remind me then of this exile and this yearning?

"O far away, O long my board of strength: Field, fence, tree, stone, cloud—call me home at length."

Many thanks to GARLAND B. CONLEY, A.B. '23, B.S. in B.A. '25, for his renewal subscription. Mr. Conley lives at 2854 Connecticut Ave., N.W., Washington, D. C.

FRANK L. DAVIS, B.S. in Agr. '23, A.M. '28, Ph.D. '36, has been appointed as soil chemist and professor of soils to the staff of the agricultural experiment station and the School of Agriculture, Alabama Polytechnic Institute, Auburn, Ala.

LUCILLE KOHLER, A.B. '23, B.J. '30, A.M. '42, has been appointed assistant professor of sociology at Park College, Parkville, Mo. As a free-lance writer, Miss Kohler has published numerous magazine and newspaper articles.

PAUL S. MILLER, A.B. '23, is vice-president of Tobey Fine Papers, Inc., 1008 Clark Ave., St. Louis, Mo.

PRINTING

Is the Gateway
To New Business

BOOKS

Books are keys to wisdom's treasure
Books are gates to lands of pleasure

E. W. Stephens Co.

Printing and Book Manufacturing

Columbia, Missouri—Phone 4115

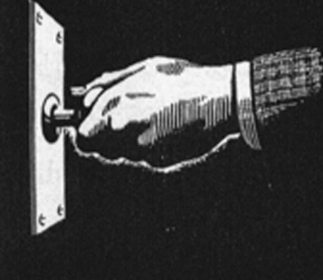


CLYDE (Brick) SHEPARD
ROY SAPPINGTON

A. J. (Andy) WOLF
R. H. (Renny) ROSS

COLUMBIA, MISSOURI

YOUR
OPEN DOOR
TO HOSPITALITY
IN ST. LOUIS



HOTEL

Lennox

1924

DUANE DEWEL, B.J. '24, is living at 221 S. Hall, Algona, Ia.

The address of REV. ALBERT C. BERNTHAL, '24, is 118 North Bowman Ave., Danville, Ill.

DR. ROBERT E. BRUNER, A.B. '24, B.S. in Med. '35, was one of the principal speakers at the speech correction conference held at the University. The conference was designed for Missouri High School and college speech teachers and public health workers. Dr. Bruner lives at 5815 Cherry St., Kansas City, Mo.

Mrs. Robert C. Patterson, the former HAZEL B. BASKETT, A.B. '24, B.S. in Ed. '26, and children left Columbia for Washington, D.C., to join Dr. Patterson, who is teaching in Georgetown University. Dr. Patterson was a member of the anatomy department of the University.

O. K. ARMSTRONG, B.J. '24, A.M. '25, of Springfield, Mo., former Missouri legislator, was named head of a commission to study the functioning of civil agencies of the federal government. The commission will devote special attention to civil service personnel.

MARGARET OWEN, A.B. '24, of Kansas City, Mo., has been appointed librarian of the general library of Stephens College, Columbia. Miss Owen has been studying for a master's degree at Columbia University in New York, N. Y.

MR. and MRS. ALBERT M. HUDSON, B.S. in Eng. '26, are living at 5100 Cedar Lane, La Mesa, Calif. Mrs. Hudson is the former RITA SMITH, '24.

1925

DR. L. A. EUBANK, A.M. '25, Ph.D. '31, former dean of Christian College, Columbia, and dean of Northeast Missouri State College for 20 years, has been appointed associate professor of education and director of placements at the University. Mr. and Mrs. Eubank live at 83 Circle Drive Columbia.

We were sorry to learn of the death of JAMES H. WRIGHT, '25-'26, who died in Kansas City, Mo., in Sept. Mr. Wright was State Department director for American republic affairs in Washington, D. C.

CARL D. MUENCH, B.S. in Eng. '25, is president of York Product Co., Des Moines, Ia.

1926

EDWARD D. DAIL, B.S. in Agr. '26, B.J. '30, M.A. '31, recently was named executive director of the Jefferson National Expansion Memorial Association. The organization plans the construction of a river front memorial in St. Louis. Mrs. Dail is the former MARGARET LOUSEN, B.S. in Home Ec. '27. Their home is at 423 Miriam Avenue in Kirkwood, Mo. Mr. Dail is president of the St. Louis investment firm of Edward D. Dail and Company.

We extend deepest sympathy to the family of Mrs. Stanley Bull, the former MARGARET WILLIAMS, B.S. in Ed. '26, who died in Sept. in Minneapolis, Minn.

SARA ANN ALLEN, B.J. '26, A.M. '30, of Columbia has joined the staff of the *Douglas Daily Dispatch*, Douglas, Ariz. After serving three years as a member of the WAC in New Guinea and the Philippine Islands, Miss Allen was affiliated with the League of Women Veterans in New York City.

RICHARD, DUDLEY, SHEWMAKER, A.B. '26, is an attorney with offices at 705 Olive Street, St. Louis, 1, Missouri. His home is at 6200 Pershing Avenue in that city.

1927

GEORGE T. PECKHAM, JR., B.S. in Agr. '27, and Mrs. Peckham, the former MILDRED SMALLFELDT, A.B. '25, are living at 415 Oakhurst Drive, Clinton, Iowa.

HUGH R. MAC MILLAN, JR., A.B. '27, is with the Colgate Peet Co., 105 Hudson St., Jersey City, N. Y.

TOM MAHONEY, A.J. '27, and Mrs. Mahoney, the former GRACE DOOLEY, A.B. '28, are living at 56 Pondfield Rd. West, Bronxville, N. Y.

JOSEPH M. HOLDAY, A.B. '27, B.S. in Ed. '27, is living at 47 Hurd Rd., Belmont, Mass.

ERNEST M. FUNK, A.M. '27, and Mrs. Funk, the former FLO ELLA DICKEY, B.S. in Ed. '27, entertained at their home with a tea in honor of Mrs. Robert Partridge, the former GEORGIANN DICKEY, B.S. in Home Ec. '40, of Washington, D. C.

ROBERT PARTRIDGE, B.S. in Agr. '38, is an economist with the Rural Electrification Administration, Washington, D. C.

VERNUS N. PYLE, B.S. in Eng. '27, is

living at the Erickson Apartments, Main Street, Miles City, Montana.

1928

We were happy to hear that RONALD S. REED, A.B. '28 LL.B. '31, is making a fine recovery following an accident. He is city counselor of St. Joseph, Mo. Mrs. Reed is the former SALLY VIRGINIA JUDEN, A.B. '29.

STANLEY I. HAYDEN, A. M. '28, director of veterans' guidance center at the University since 1945, resigned this position to take up the new post as director of admissions at Missouri Valley College, Marshall, Mo.

1929

CARL ROBERT SWARTZLOW, A.M. '29, Ph.D. '32, has accepted the position of Regional Naturalist, Region II, National Park Service, with headquarters at 403 Keeline Building, Omaha, 2, Nebraska. He writes, "Our region includes Rocky Mountain National Park, Yellowstone National Park, Grand Teton National Park, Glacier National Park, Isle Royale National Park, Wind Cave National Park and in addition, sixteen national monuments. Although the great percentage of my time is spent in the Omaha office, I do visit these areas in the field from time to time, especially during the summer season." Mr. Swartzlow, and his wife, the former RUBY JOHNSON, A.M. '33, live at 1610 North 38th Street, Omaha, 3, Nebraska.

We extend deepest sympathy to the family of JOHN HASKELL FOARD, B.S. in Agr. '29, M. in Ed. '44, of Jefferson City, Mo. Mr. Foard died while attending the annual conference of vocational agriculture teachers. He was director of vocational agriculture education in the state department of education.

Many thanks to SHIEGO SOGA, B.J., A.B. '29, a member of the staff of *The Hawaii Times, Ltd.*, P.O. Box 1230, Honolulu, 7, Hawaii, for his *Alumnus* subscription renewal.

The business address of T. R. SHIELDS, A.B. '29, is 1425 Oak, %A.T.&T. Co., Kansas City, Mo.

LEO P. HOPPER, B.S. in Agr. '29, is living near Chillicothe, Mo.

MANUFACTURERS AND WHOLESALE ONLY

Moberly

Columbia

Marshall

Hannibal

Louisiana

Marceline

Brookfield

Wentzville

Frozen Gold
CREAM OF CREAMS
U. S. TRADE MARK NO. 393946
ICE CREAM

*Dependable Service
Superior Quality*

flowers

J. R. Mueller
FLORIST

Pioneers in the field of Quality Clothes

NUNN-BUSH SHOES FOR MEN

Since 1868

BARTH CLOTHING COMPANY, INC.

The address of Mrs. Neal Van Sooy, formerly **MARTHA STANDLEY**, B.S. in Ed. '29, is Box 39, Santa Paula, Calif.

The address of **LT. COL. PLATT L. WELKER**, B.S. in B.A. '29, is Castle Field, Merced, Calif.

Mrs. Diller C. Wood, the former **ROMAIN-ROACH**, A.M. '29, B.S. in Ed. '27, died in St. Louis, Mo., after a long illness. We extend deepest sympathy to her family.

1930

Mrs. Batterson, the former **WILMA L. AGEE**, A.M. '30, has been named dean of instruction and dean of women at the Latin American Institute in Chicago, Ill. The two-year-old institute in a career school offering courses to persons interested in foreign countries.

J. DORR EWING, LL.B. '30, and Mrs. Ewing, the former **MARTHA KENNEDY**, A.M. '29, are living at Maryville, Mo.

Thanks to **THOMAS L. CARROLL**, A.B. '30 for his renewal subscription. Mr. Carroll's address is % Wachovia Bank and Trust Co., Winston Salem, N. C.

L. G. "BUCK" BUCHNER, A.B. '30, is with the Employers' Group, Carolina Department, Dixie Bldg., Greensboro, N. C. He writes that he hopes to see the Duke-Missouri game Nov. 8 in Durham, N. C. Mr. Buchner's home address is 1018 Wharton, Greensboro.

1931

The new address of Mrs. J. A. Seitz, the former **WILBERTA HAMPELMAN**, B.S. in Ed. '31, is 135 C Adm. Luce, The Anchorage, Middletown, R. I. Mrs. Seitz formerly lived in Washington, Mo.

The address of **WALTER L. ASLING**, A.M. '31, is 2638 N. Florida, Arlington, Va.

BROOKS ANN COLE, B.J. '31, of the Fulton Sun-Gazette, Fulton, Mo., and **RUTH BRIGGS**, B.J. '45, of the Quill, West Plains, Mo., were named regional vice-presidents of the Missouri Women's Press Club.

HASKELL HOLMAN, A.B. '31, is with the Department of Revenue, Division of Collection, Income Tax Unit, Jefferson City, Mo.

HARRY CARL DAVIS, A.B. '31, M.A. '28, B.S. in Ed. '33, is biologist in government laboratory in Milford, Conn. His home address is 87 Trumbull Ave., Milford.

1932

JOHN E. MARSTON, B.J. '32, A.M. '33, Webster Groves, Mo., promotion manager of the St. Louis Star-Times, is teaching a course in advertising copy writing in the University College division of Washington University.

The business address of **R. V. KING**, B.S. in Med. '33, A.B. '32, is Bellevue Hospital, 400 E. 30th St., New York, N. Y.

1933

JOHN H. DICKERSON, B.S. in Agr. '33, A.M. '37, formerly of Huntsville, Mo., is now at Clifton Hill, Mo. We were pleased

to have him as a recent visitor at the Alumni office.

EARL R. GORDON, B.S. in P.A., A.M. '33, is general secretary of the Young Men's Christian Association, 225 W. 5th Ave., Gary, Ind. Mr. and Mrs. Gordon, the former **MILDRED EVERLY**, B.S. in Ed. '17, make their home at 561 Tyler, Gary, Ind.

CHARLES H. BALDWIN, B.S. in Agr. '33, of Monticello, Mo. has been appointed FHA supervisor for Boone County, Mo. Mr. Baldwin has been the supervisor in Lewis County since 1935.

VIRGIL PROFFITT, B.S. in Agr. '33, is now in charge of on-the-farm training at the Veterans Administration Office in St. Louis, Mo.

The address of **DAVIS K. JACKSON**, B.S. in Eng. '33, is 23 W. 60th St., Kansas City, Mo.

LT. COL. ELMER R. POWELL, B.S. in Ed. '33, A.M. '33, former assistant professor of military science at the University left recently for a two-year assignment with the army of occupation in Germany.

1934

Thanks to **LESLIE E. BATES, JR.**, B.S. in Eng. '34, for his renewal subscription to the *Alumnus*. Mrs. Bates is the former **MARY ESTHER COUSLEY**, B.S. '33. They are living at 1622 East 35th Street, Tulsa, 5, Oklahoma.

The address of **MILTON HERMAN**, B.J. '34, is 307-311 S. Sixth St., St. Joseph, Mo.

WOODROW T. "WOODY" HATFIELD, B.S. in Ed. '34, A.M. '39, former athletic director of Hickman High School, Columbia, did advance graduate work at Columbia University in N. Y. and is teaching in St. Louis, Mo., this year.

FRANK McKINNEY, A.B. '34, is with the Quaker Oats Co., Chicago, Ill. His home address is 744 Asbury, Evanston, Ill.

The address of **RUSSELL L. RILEY**, B.S. B.A. '34, and Mrs. Riley, formerly **HARRIETT SCRANTON**, B.S. in Ed. '33, is Route 2, Fairfax, Va.

1935

ALFRED C. MOON, SR., B.S. in Ed.

'35, A.M. '44, died recently in St. Louis, Mo. Mr. Moon taught in Missouri schools for 40 years and served as superintendent of schools at Hillsboro, Mo., for the past two years. He is survived by his wife and five children, one, **ALFRED C. MOON, JR.**, B.S. in Ed. '44, A.M. '45, graduated from the University.

COOK CLELAND, '35-'40, University City, Mo., won the Thompson Trophy Race in Cleveland, Ohio in September. The race is a 300 mile air race climaxed the National Air Races. Mr. Cleland set a new record speed of 296.1 miles per hour for a closed course mark, and turned one lap at 404 miles an hour, the fastest lap in the history of the race.

The new address of Mrs. Louise Walthour, formerly **RUTH CHAPMAN**, B.S. in Ed. '35, is 3928 Elliot Rd., Erie, Penn.

The address of **COL. GEORGE BLASE**, A.B. '35, A.M. '36 is Sq. S., 42 AAF BU, Maxwell Field, Ala.

1936

Three former University students who were wartime engineers are now staff members of George E. Wells, Inc., St. Louis, Mo., which specializes in application and aviation techniques in machine and product design. **PHILLIP R. WATSON**, B.S. in E.E. '36, **DORRIS GLENN LEONARD**, B.S. in M.E. '43, **FRISTOE MULLINS**, B.S. in B.A. '35, joined the Wells staff and had a part in the development and engineering of the new automatic dry cleaning machine.

FELIPE ABAD SALUDEZ, B.S. in B.A. '36, is now dean of the college of liberal arts and acting president of Corregidor College at Gulmba, Nueva Ecija, Philippine

"When you see me don't think of Life Insurance, but when you think of Life Insurance, see me."

HERLEY S. DAILY, General Agent
THE CONNECTICUT MUTUAL LIFE INSURANCE COMPANY

Kansas City, Mo.

Founded 1846 In Missouri since 1848
601-1016 Baltimore Avenue Bldg.



BLUE STREAK FAST FREIGHT

affords

Overnight deliveries from St. Louis to Southeast Missouri, Memphis, Little Rock, Shreveport and Texarkana.

ST. LOUIS SOUTHWESTERN RAILWAY LINES

ST. LOUIS, MO.

Save Systematically and Safely

BOONE NATIONAL SAVINGS & LOAN ASSOCIATION

14 North Ninth Street
Columbia, Missouri

WM. F. ST. CLAIR, Secretary

Big Boy's

RESTAURANT

We Satisfy
That Hungry Feeling

* * *

Homecooking—

Family Style

* * *

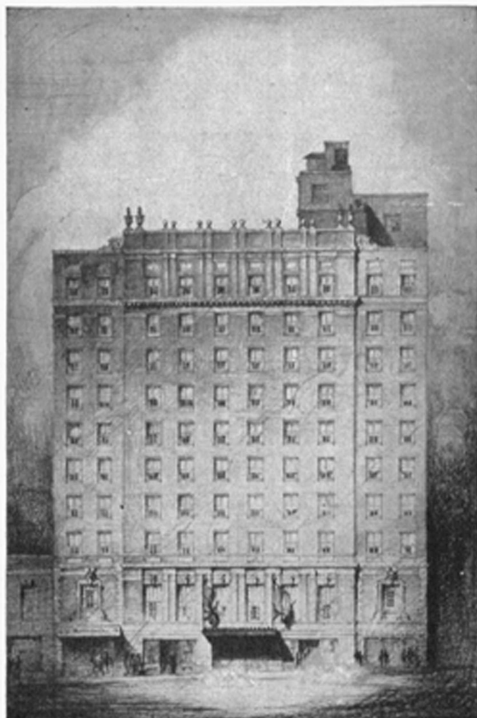
Day and Night Service

* * *

J. W. CHANEY, Prop.

Wright City, Mo.

The TIGER HOTEL



Columbia's
Newest
Hotel

Be in the center of things at the Tiger . . . easily accessible to all University and college functions. Enjoy our air-conditioned coffee shop. 150 Rooms . . . modern . . . fireproof . . . your stay at The Tiger will be comfortable and pleasant.

Write, wire or phone for reservations.

R. L. Dudley
Resident Manager

Make THE TIGER your headquarters in Columbia.

STEPHENS COLLEGE

for Women

OFFERS

A program keyed to the individual needs of the students which prepares them for living in a modern world. Expert faculty guidance.

Aviation, radio, fine and applied fashion, horsemanship, and many other specialized courses.

HOMER PRICE RAINEY
President
Columbia, Mo.

STOP—SHOP—SAVE

COLUMBIA'S
SUPER DRUG
STORE

904 EAST
BROADWAY



HEADQUARTERS FOR SAVING!

Nationally Advertised Merchandise
at Deep-Cut Prices Everyday

Islands.

The address of F. N. WIGHTMAN, B.S. in E.E. '36, is Sales Dept., Application Engineering, Westinghouse E&M Co., 411 N. 7th, St. Louis, Mo.

1937

ERWIN R. BRETSCHER, B.S. in C.E. '37, has been named assistant professor of civil engineering in the College of Engineering at the University of Illinois, Urbana, Ill.

It's a boy for the Zinneckers! RALPH ZINNECKER, '37-'38, '40-'41, and Mrs. Zinnecker, the former WANDA UTTERBACK, B.S. in Ed. '42, announce the arrival of David Austin Zinnecker, born Sept. 2, in South Houston, Tex.

CAPT. LOGAN C. ATTERBURY, '37-'38, is now serving as aide to Lt. Gen. C. H. Lee. He also served as second pilot on the army plane which carried Gen. Lee and five staff member from Italy.

MAJ. RALPH D. BEER, B.S. in Ed. '37, who has been on duty with the military government in Japan, was separated from the army Sept. 1. Maj. Beer was captain of the University basketball and baseball teams in 1937.

PAUL J. CHRISTMAN, '37-'43, and Mrs. Christman, the former INEZ POTTER, '39-'41, have a new daughter christened Victoria Lee and called "Tory." "Tory" has two brothers, Paul II and David. Paul is with the Chicago Cardinals professional football team.

The address of LT. COL. THOMAS R. BRUCE, B.S. in B.A. '37, is 2106 N. Scott No. 41, Arlington, Va.

ROBERT C. NAEGLER, A.M. '37, has been appointed head of the high school in Nevada, Mo.

CLAYTON HILL, B.S. in B.A. '37, visited in Columbia last summer. He is a sales engineer for the International Business Machines Corporation. He lives at 710 Vernon Road, Philadelphia, Pa.

1938

CHARLES SCHWARTZ, A.B. '38, A.M. '40, and Mrs. Schwartz, the former ELIZABETH MORROW REEDER, Ph.D. '38, have returned to Missouri to live. Mr. and Mrs. Schwartz have made their home in Honolulu, Hawaii for the past two years where he has been with the soil conservation service. He is now with the state

conservation commission in Jefferson City, Mo.

The home address of VICTOR F. SWYDEN, A.B. '38, B.S. in B.A. '39, is 319 Alameda Rd., Kansas City, Mo.

We were pleased to hear from DONALD G. TARBET, B.S. in Ed. '38, M.Ed. '46. Mr. Tarbet lives at 4146 Maryland, St. Louis, Mo.

WILLIAM S. WARDEN, LL.B. '38, and Mrs. Warden, the former WHELMINA REUTER, A.B. '39, write, "We are enjoying the news of M.U. so much, we wish it were published more often." Mr. and Mrs. Warden are living in Solana Beach, Calif.

JOHN H. KEMPSTER, B.S. in B.A. '38, is teaching at the Massachusetts Institute of Technology, 77 Massachusetts Ave., Cambridge, Mass.

The home address of ROBERT D. PARTRIDGE, B.S. in Ag. '38, and Mrs. Partridge, the former GEORGIAN DICK-EY, B.S. in Home Ec. '40, is 4878 28th St., Arlington, Va.

JOHN MEYER, B.S. in C.E. '38, is living at 23 Topton Way, Clayton, Mo.

The address of ROY MILTON SCHUTTE, B.S. in B.A. '38, is 909 W. Lawrence, Springfield, Ill.

HAROLD H. SOURS, B.J. '38, became telegraph editor on the Bristol, Va., Herald-Courier recently. He was formerly wire editor and rewrite man for the United Press in New York, N. Y.

1939

JOEL C. CARR, B.S. in B.A. '39, is living at 3838 Park, St. Louis, 10, Missouri.

PAUL O. RIDINGS, A.M. '39, has been elected president of the Chicago Chapter of the National Association of Public Relations Counsel, Inc. Mr. Ridings is president of Ridings & Ferris, Inc., Chicago publicity and public relations firm with offices at 22 E. Huron St., and a branch office in Rochester, N. Y.

EMMETT, B. WINN, '39-'40, writes from 64 Squadron, Davis Montham Field, Tucson, Ariz., "Always glad to hear where every one is and the *Alumnus* sure does help me keep track of every one. I am stationed here in the Army Air Corps and we fly all over the world."

ROBERT WIGGINGTON, B.J. '39, and his wife spent their vacation in Bermuda this summer. Mr. Wigginton is Public Relations representative for the Pan Amer-



Home Comfort

Good beds, appetizing food, soft chairs, and other home-style comforts are waiting for you at the Pickwick-Kansas City's friendly hotel, where nothing is old-fashioned except the helpful service.

500 Rooms and Suites with bath
REASONABLE RATES

Hotel PICKWICK

10th and McGee
KANSAS CITY, MO.

We Sell the Famous and Dependable



● ● **KEEN KUTTER** ● ●
LINE OF TOOLS AND CUTLERY
HAYS HARDWARE CO.
808 Broadway Dial 4710
Columbia, Mo.

SINCE 1857

Boone County National Bank

R. B. PRICE, President



4-WAY
FOOD
PROTECTION

- 1—Constant Cold Temperature (Foods stay natural longer)
- 2—Pure Washed Air (No transference of food odors)
- 3—Proper Amount of Moisture (No rapid drying out of foods)
- 4—Rapid Circulation (Impurities speedily removed)

PROVIDES FRESHER
FOOD AT HALF THE
COST

**COLUMBIA ICE and
STORAGE CO.**

Coolerator

THE ONLY... REFERENCE...

Exchange National Bank

1865 *The Friendly Bank* 1946

Member Federal Deposit Insurance Corporation

- Prompt
- Economical
- Efficient

Give your clothes the best protection possible by letting us take over your laundry and dry-cleaning problems. Your complete satisfaction will result.

DORN-CLONEY LAUNDRY AND DRY CLEANING CO.

107 South Eighth

Columbia

TABLE OF CONTENTS

COMFORT...

COURTESY...

CONVENIENCE...

in ST. LOUIS

HOTEL
Mayfair

"How to save money on your electric bill"



- 1 Toss out your electric fan and adopt a small boy to wave a palm leaf for you. Of course you'll have to feed and clothe him—and he'll be pretty noisy—but you'll save a penny every three hours.
- 2 Thow away your electric clock and buy a sun-dial. Of course it won't wake up for work, but think of the fun you'll have trying to figure out what time it is—and you'll save enough to have the sun-dial almost paid for in 41 years.
- 3 Turn off your radio during the Electric Hour every Sunday afternoon at 2:30 over CBS, CST. In this way you'll miss a grand show, but think—in only two years you will have saved the price of an ice cream soda!

KANSAS CITY POWER & LIGHT CO.

ican Airways System, LaGuardia Field, N. Y.

HARRY P. SEWARD, B.S. in B.A. '39, is with the Bankers Life Insurance Co. of Nebraska, Bankers Life Bldg., Lincoln, Nebr. Mrs. Seward is the former FRANCES ANN ROBBETT, B.S. in Ed. '40.

HOWARD EPSTEIN, A. B. '39, LL.D. '41, 424 Madison Ave., New York, N. Y., "I like it here and after being in New York for a year and a half, I am convinced that I made the right move. Quite a few other Missouri boys must be thinking along the same lines, because every day I am running into more and more ex-Tigers."

FRANK O'BRIEN, B.J. '39, was co-author of the book "The Balkans," one of the latest books to come out on the post-war Balkan problem. Mrs. O'Brien is the former SEVIN SERTEL, B.J. '39. Mr. O'Brien has covered Associated Press assignments in Syria, Lebanon, Egypt, Italy, Rumania, Bulgaria and Istanbul.

MARVIN MOTLEY, A.B. '39, LL.B. '41, is with Hunter, Chamier, & Chamier, Attorneys and Counselors at Law, 201-207 Howard Bldg., Moberly, Mo.

RUDOLPH H. HORVATH, B.S. in B.A. '39, has moved from Brookfield, Ill., to 4040 W. 99th Place, Oak Lawn, Illinois.

We were happy to hear from FRANK C. HEIDEL, B.S. in B.A. '39, of 6606 Elmer Ave., St. Louis, Mo.

KENNETH HUDNALL, B.J. '39, is associate publisher and advertising manager of Profitable Hobbies, 2401 Burlington, North Kansas City, Mo.

1940

The address of JOHN T. KEMPER, B.S. in E.E. '40, is 14 Charlesgate West, Boston, Mass.

FRED H. TODD, '40, immigration patrol inspector in Texas, has returned to El Paso after visiting his parents in Columbia.

RALPH M. SEIBOLD, A.M. '40, has joined the faculty of the Middleton, N. Y., Collegiate Center where he will teach American history and American Government. Mr. Seibold had previously taught history and political science at Cahmplain College, Plattsburg, N. Y., and at Mohawk College, Utica, N. Y.

DOYLE H. JAY, B.J. '40, is living at 205 Nieto Ave., Long Beach, Calif.

P. H. BORGELT, '40-'42, writes "Check enclosed. Wouldn't miss it for the world."

We were sorry to hear of the death of VIRGIL HARMON, '40-'41, who died recently in Brookfield, Mo. Mr. Harmon was an agriculture instructor in that city.

STERLING W. MCHARG, '40-'42, '47, and Mrs. McHarg, formerly MARJORIE KEMPER, '40-'47, are living at 1119 University, Columbia, Mo.

ADA C. CRAIN, M.Ed. '40, is teaching in Big Rapids, Mich. She is living at 419 Finley Ave., Big Rapids.

J. O. "SMOKY" KELLER, B.S. in Agr. '40, A.M. '42, of the University department

of physical education, is living in Columbia at 46 West Boulevard South.

Many thanks to JOHN BLYHOLDER, B.S. in Agr. '40, for his subscription to the *Alumnus*. Mr. Blyholder lives near New Cumberland, Pa.

WILLIAM C. SANFORD, A. B. '38, LL.B. '40, and Mrs. Sanford formerly HELEN P. SMITH, B.S. in Ed. '40, are living at 1126 E. Sunshine, Springfield, Mo.

Mrs. Marvin E. Kay, the former EDNA COATES, B.S. in Ed. '40, is living at 4055 Kenny Road, Columbus, Ohio.

1941

The business address of MAJ. WILLIAM P. OLIVER, JR., USMC, A.B. '41, is Room 2141, JAG, Navy Dept., Washington, D. C. Maj. and Mrs. Oliver the former DOROTHY MEANS, A.B. '41, are living at 1406 S. George Mason Dr., Arlington, Va.

Thanks to Mrs. F. A. Hoyer, the former PIA ASKANI, B.S. in Ed. '41, for her renewal subscription to the *Alumnus*. She and Mr. HOYER, B.S. in Chem. Eng. '39, are living at 4147 Gravois Avenue, St. Louis, 16, Missouri.

RUSSELL ROBERTSON, B. J., A.B. '41, is living at 802 Rutherford, Macon, Missouri.

JOHN J. DUNCAN, B.S. in B.A. '41, is sharing an apartment at 705 West 32nd Street, Kansas City, Mo., with JOHN LATHAW, B.S. in B.A. '42.

IMOGENE BARNES, B.J. '41, flew to Columbia for a visit recently from Hot Springs, Ark., where she is employed as a flight instructor for the Stover Air Service.

DAVID E. PAYNE, B.S. in B.A. '41, is living at 505 North Seventh, Rochelle, Illinois.

DR. JOHN D. TALBERT, A.B. '41, B.S. in Med. '43, is stationed at the U. S. Marine Hospital, San Francisco, California.

JOHN F. LEE, JR., B.S. in Agr. '41, and Mrs. Lee, the former VIVIAN I. MOORE, B.S. in Ed. '41, are living at 117 Columbia, Augusta, Kans.

RUSSELL BRIGHT, B.J. '41, is living at 3847 Burnside Ave., Los Angeles, Calif. . .

Mr. and Mrs. H. R. Poynter, Oregon, Mo., announce the arrival of a daughter born

Sept. 26. Mrs. Poynter is the former VIRGINIA LEE, B.S. in Ed. '41.

1942

WALTER B. NEIDERT, B.S. in Ch. E. '42, and Mrs. Neidert, the former HELEN GALWORTHY, '39-'42, '45-'46 announce the arrival of a daughter, Susan Kay Neidert. Susan was born Aug. 23 in Bartlesville, Okla., where her father is a chemical engineer with the Phillips Petroleum Co.

HAL HOUGH, B.J. '42, has been named program director and assistant manager of KOMA, radio station, in Tulsa, Okla. He was formerly with KMBC of Kansas City, Mo.

The address of NICHOLAS E. CONDURAS, A.B. '42, is 51 Compton St., Boston, Mass.

Miller's
SUPERIOR SHOES

Broadway at Eighth

Columbia, Mo.



THE BOYS' OWN SHOP

The newest shop in Boyd's, Clayton, strictly for boys aged 4 to 14. Here they can be fitted in suits and coats in real masculine surroundings.

Boyd's

St. Louis • Olive at Sixth
Clayton • Central at Forsythe

College Theatre Co.
★ MISSOURI
★ HALL
★ VARSITY
★ ★ ★ ★ ★
AMERICA'S
Greatest Stars
In the World's
Best Pictures

CONSTRUCTION THE MATERIALS
CARTER-WATERS
KANSAS CITY MO. 8, MISSOURI

OUR MISSOURI ALUMNI

Albert R. Waters-Pres. E. Kemper Carter-Chairman
Norton B. Smith-V. P. & Sales Manager H. Ralph Ambruster-Pur. Agt.
Richard S. Largent-Sales Engineer

We claim the record in The Missouri Alumnus
"OLDEST CONTINUOUS ADVERTISER"



**It's downtown
to downtown...
when you
travel by train**

Conveniently located depots save you time before and after trips when you travel by train. And train travel is the *see-more* way to go. It costs less, too, if you are buying a round-trip ticket. Enjoy traveling in roomy comfort via modern Santa Fe trains.

**Relax... be comfortable
...enjoy your trip**

Santa Fe offers a fleet of fine dependable trains between Chicago, California, and the Gulf Coast.

Go Santa Fe



Ross E. Chappell
Passenger Traffic Manager

Topeka, Kansas

VICTOR N. LAMBETH, B.S. in Ag. '42, is living at 201 Jewell Avenue, Columbia, Mo.

Many thanks to ALBERT SCHMUDDE, B.S. in M.E. '42, of 414 North Jefferson, Peoria, Ill., who renewed his *Alumnus* subscription.

JAMES V. DUNLAP, B.S. in Agr. '42, has accepted a position as assistant instructor in the animal husbandry department of the University of Nebraska, Lincoln, Nebr.

Congratulations to WILLIAM O. WINTER, A.B. '42, A.M. '47, who has been awarded a fellowship in Social Science Research in the Flint area at the University of Michigan's Institute for Human Adjustment.

The address of ARTHUR L. FREEMAN, JR., B.J. '42, is Box 212, Farmington, Mo.

The address of DAVID P. INWOOD, B.S. in E.E. '42, M.S. in E.E. '47, is 48 W. Housatonic, Pittsfield, Mass.

HARRY W. SCHERZER, B.S. in Ch. E. '42, writes that he plans to attend the Homecoming game Nov. 15. Mr. Scherzer is a sales engineer for the Columbia Quarry Co., 1612 Syndicate Trust Bldg., St. Louis, Mo.

JACK R. HUDKINS, B.S. in Ch.E. '42, is employed by Phillips Petroleum Co., working as a process engineer in their Kansas City, Kans. plant. Mr. and Mrs.

Hudkins and their two children live at 2408 Lafayette, Kansas City, Kans.

The newest members of the Boone County, Mo., bar are: HARRISON NORTON, A.B. '42, LL.B. '47, Columbia; CARL F. SAPP, A.B. '42, LL.B. '47, 1300 Windsor St., Columbia; and WILLIAM A. MINER, LL.B. '47, B.S. in P.A. '40, 305 Hardin St., Columbia. Mr. Norton will be associated with Edwin C. Orr of Columbia, while Mr. Sapp is associated with Attorney Sears Jayne as a junior partner, and Mr. Miner will practice in his father's office at 808 Walnut St.

THOMAS V. GLENDON, B.J. '42, writes he is with the Advertising Division of the General Electric Co., Greenwich, Conn. His home address is 88 Northfield St., Greenwich.

M. H. "HAL" HELLER, B.J. '42, has moved from Los Angeles, Calif. to 418 S. Indian Ave., Palm Springs, Calif.

LOREN M. MILLS, B.S. in B.A. '42, is living at 407 Grand, Hannibal, Mo.

Thanks to M. ISABEL BELCHER, B.S. in Ed. '42, Carrollton, Mo., for her *Alumnus* subscription renewal.

ROBERT R. McDANIEL, B.S. in C.E. '42, is living at 7011 Field Ave., St. Louis, Mo.

Mrs. Patterson Bain, the former MARJORIE JONES, A.B. '17, tells us LLOYD E. JONES, JR., A.B. '42, and Mrs. Jones announce the arrival of a son, Lloyd Edmondston Jones, III, in San Diego, Calif., in August.

WARREN G. MATTHEWS, '42-'43, '46, has moved from Cardwell, Mo., to 2900 Popular Terrace, Baltimore, Md.

1943

ANNA MAE KELLER, B.S. in Ed. '43, is with the Lammert Furniture Co. of St. Louis, Mo., as an adviser in the Home Planning Bureau. Miss Keller lives at 6024 Kingsbury, Apt. 10, St. Louis.

ROLLA J. GITTINS, B.S. in B.A. '43, is with Dempsey-Tegeler & Co., Investment Securities, 407 N. 8th St., St. Louis, Mo. His home address is 8603 Goodfellow Blvd., St. Louis.

Mrs. Clem Alexander, formerly CYNTHIA ANN JOHNSON, B.S. in B.A. '43, is living at 728 E. 70 Terrace, Kansas City, Mo.

The address of WILLIAM L. BOLLES, M.S. in Ch.E., '43, is General Delivery, La Marque, Tex.

ALFRED B. CRAIG, A.B. '43, has been appointed Group Leader of Plastics Evaluation Groups, at Monsanto Chemical Company's Nicholas Road Laboratories, Dayton, Ohio. Mr. and Mrs. Craig and their two daughters live at 231 Edgewood Court, Dayton.

GEORGE A. KURZ, B.S. in Agr. '43, has moved from Webster Groves, Mo. to Alexandria, La.

IN JEFFERSON CITY •

THE MISSOURI HOTEL

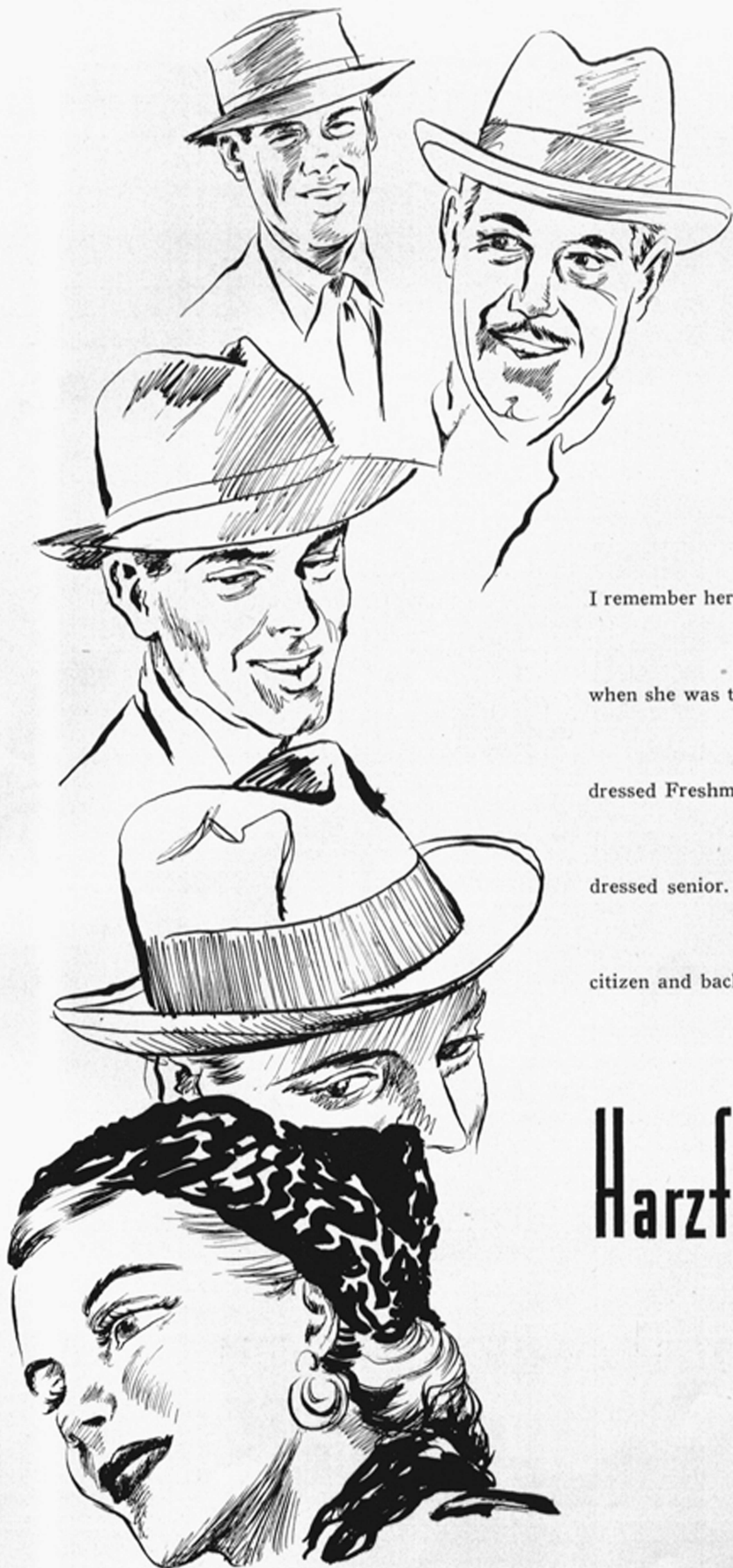
"A Sweet Hotel"

Columbia Savings Bank

9TH AND BROADWAY
COLUMBIA, MO.

ESTABLISHED 1886

Member Federal Deposit Insurance Corp.



I remember her . . . when she was sixteen,

when she was twenty. When she was a Harzfeld-

dressed Freshman and when she was a Harzfeld-

dressed senior. Now she's a Harzfeld-dressed

citizen and back for Homecoming.

Harzfeld's

A Streamlined Timetable??

YES...
*and Missouri Pacific
passengers like it*

LIKE MOTHERS-IN-LAW, timetables have long been favorite targets for gag-writers and cartoonists. These good-humored critics, as well as others who were serious about the subject, have helped to build an impression that timetables had to be drab and uninteresting and that the railroads designed them to confuse and bewilder their passengers.

If that is the way you feel about railroad timetables, take a look at the Missouri Pacific's streamlined model. It has a striking new cover and a double page map in colors. Schedule pages have been restyled to make them more readable and they are enlivened with an assortment of interesting, illustrated information about the Missouri Pacific and the communities it serves.

Modernizing the timetable folder was but one step in the Missouri Pacific's progressive program of service improvement, and it has won the hearty approval of travelers throughout the country.



Ask for your copy of the streamlined timetable folder next
time you call at any Missouri Pacific Ticket Office

I. G. MILLER
Passenger Traffic Manager
Missouri Pacific Lines
St. Louis, Mo.



"A Service Institution"