

# MIZZOU MONTHLY

A publication of the University of Missouri-Columbia faculty & staff

Vol. 1, No. 9 June 6, 1980

## No one safe from tornadoes UMC weather study reveals

Although not located in "tornado alley," which extends from north central Texas through central Oklahoma and Kansas to Nebraska, Missourians should keep a weather eye out nonetheless, according to a recent UMC tornado study.

"We analyzed records from every Missouri county from the past 60 years and concluded that tornadoes can hit anywhere — no place is safe," says Grant L. Darkow, UMC professor of atmospheric science. "So, to risk your life on the false assumption that tornadoes always hit the other guy is foolish."

Since 1916, when the weather bureau began making its first major efforts to keep track of severe storms, tornadoes have been reported in every Missouri

county. Some counties reported many more twisters than adjacent ones, which suggests, at first glance, the existence of tornado alleys.

But closer analysis of the data reveals an interesting pattern. Counties with low population densities report fewer tornadoes than those with more people per square mile.

"This, of course, doesn't mean that people attract tornadoes but that tornadoes are reported by people. In a sparsely populated county there would simply be fewer people to see and report tornadoes," Darkow points out. "Once the population reaches 200 persons per square mile we feel sure that all tornadoes in that county will be reported — at least all that touch down."

Darkow identified 30 factors that might

account for county-to-county differences in reporting of twisters. In addition to average population density he looked at rural population density, the number of newspapers serving the area, distance from the nearest weather office and even at bank deposits, which reflect county property value. Using a computer, sophisticated statistical analysis was performed.

"We found that 75-80 percent of the county-to-county variability could be explained in terms of non-meteorological and non-physical factors. In other words, tornadoes are essentially random," Darkow says.

However, the state's westernmost counties, such as Jasper and Newton, which are near the tornado belt, do ex-  
(Continued on page 3)

### Young journalists at UMC this week

High school students attending the UMC Journalism School's Summer Media Workshop will be on campus June 8-13 to interview faculty and staff on the topic, "Education Looks to the 80s." Already over 160 hopeful reporters and photojournalists have signed up for the workshop, according to Beth Chapman, conference coordinator.

The end product of their efforts will be a tabloid supplement to the Columbia Missourian and a 24-page magazine on UMC.

### ASC establishes 'trouble hotline'

A new program to provide faculty with a quick response to classroom problems will begin operation June 10. Persons can call the Academic Support Center for help with audio-visual equipment, furniture, maintenance, classroom comfort, or any other facility problems they encounter.

The hotline number is 882-7239, maintained by Margot Patterson's office daily from 8 a.m. to 5 p.m.

### UMC personnel office open on Saturdays

The UMC personnel office is now open on Saturdays in June from 8:30 a.m. until noon. "We have about 130 openings," says assistant personnel director Connie Wood, "and we are hoping to attract local residents for clerical and research support jobs."

The office will accept applications and administer tests on Saturdays; Wood asks that persons call in advance for an appointment, if possible.

UMC faculty and staff who know of persons interested in working for the University are asked to let them know about the Saturday hours. For more information, or for an appointment, persons can call or stop by the office at 309 Hitt St., 882-4221. Weekday hours are 8 a.m. to 5 p.m.

### Mizzou published every other week

During the summer, *Mizzou* is published every other week. The next publication is June 20; information deadline is June 17.

Publication dates for the rest of the summer are July 7, July 25, Aug. 1 and Aug. 15.

Glenn S. Hensley



# Announcements

## WATSBOX to speed long distance service

The installation of a WATSBOX, an electronic long distance routing system, was approved at the May 23 Board of Curators meeting. The system is expected to be operational by January, 1981, says Don Hoopes, manager of phone communications.

With the WATSBOX, persons will be able to reach a line after dialing only once. Depending on the class of service assigned, persons could receive either instant "zip" service, a slightly slower service, queue service (calls wait for empty lines) or restricted service for special usage.

Access codes on class of service will be assigned to individuals through department heads, says Hoopes. Those codes will also be used as billing codes.

Although the monthly cost of the system is \$14,800, Hoopes says that costs should fall as the system gives the campus control over long distance service. "For the first time, we can monitor and control the service we are buying," says Hoopes. "Previously, it was impossible to determine how many lines were actually needed, especially since campus usage is seasonal. But with the WATSBOX, an accurate accounting can be made of the usage." As a result, says Hoopes, the campus should require fewer WATS lines.

He says other institutions using a WATSBOX have cut costs as much as 20 percent.

It is also hoped that the system will cut down on the number of expensive credit card calls made yearly. Often, to save time, persons use credit cards instead of redialing the number through the WATS line. "The WATSBOX will make the need for telephone credit cards for calling from campus unnecessary," says Hoopes.

## Faculty receive emeritus titles

Twenty-two faculty members received titles of professor emeritus during the 138th Commencement Exercises.

Those recognized and their titles are Hugh Denny, professor emeritus of regional and community affairs; Douglas Ensminger, professor emeritus of rural sociology; Doil Felts, professor emeritus of extension education; Virginia Fisher, professor emeritus of child and family development; Albert Hagan, professor emeritus of agricultural economics;

Howard Heding, professor emeritus of education; Harlan Jensen, professor emeritus of veterinary medicine and surgery; Robert Karsch, professor emeritus of public administration and political science; Earl Kroth, professor emeritus of agronomy; Edward Lambert, professor emeritus of journalism; Eileen Lineberry, associate professor emeritus of extension education;

Friedel Maasdorf, associate professor emeritus of German and education; Arthur McArthur, associate professor emeritus of child and family development; David Moser, professor emeritus of agricultural economics; J. Milford Nichols, associate professor emeritus of forestry; J. Philip Norman, professor emeritus of journalism;

Wesley Platner, professor emeritus of physiology; J. Milton Poehlman, professor emeritus of agronomy; R. Brooks Polk, associate professor emeritus of forestry; Meyer Reinhold,

professor emeritus of classical studies; Ernest Sears, professor emeritus of agronomy; William Shoemaker, professor emeritus of Spanish.

## Seminar focuses on election process

A new seminar, "Mass Media and the 1980 Presidential Election," will be offered during UMC's second summer session, from July 8 through August 1. The interdisciplinary three-hour course will focus on writings about the mass media and the election process of previous elections and apply the information to this year's election. The course is sponsored by the School of Journalism and the Department of Political Science.

Guest lecturers include Frank Mankiewicz, president of National Public Radio, who was press secretary to George McGovern during his presidential campaign; Maxwell McCombs, John Ben Snow professor of newspaper research, Syracuse University; Elmer Lower, UMC professor of journalism, formerly president of ABC news; and Dan Nimmo, professor of political science and of communications, University of Tennessee.

Registration for the second four-week session is July 7; individuals who plan to enroll at UMC may request a permit to enroll from the admissions office, 130 Jesse Hall. For more information on the course, contact Roger Gafke, professor of journalism, 882-7280.

## Sears to be honored at conversazione

A conversazione honoring Ernest Sears, professor of agronomy and the campus' only member of the National Academy of Sciences, will be held June 14 at 1 p.m. in the Memorial Union Auditorium. A banquet will be held that evening.

Sears, who has worked at UMC since 1936, is internationally known as the scientist who provided the conceptual framework for a clearer insight into the evolution and genetics of wheat. He also has provided plants to scientists worldwide which have become the standards from which wheat scientists work.

Gifts of money will be placed in the Ernest R. Sears Scholarship Fund, which was established by Dr. and Mrs. John Longwell to recognize scholarship and research in genetics.

Further information may be obtained from E.H. Coe, 210 Curtis Hall.

## Lewis & Clark pool has openings

The Lewis and Clark Swimming Association has a limited number of memberships available for faculty and staff for the swimming pool behind Lewis Hall. Individual memberships are \$60; family memberships are \$105. The pool is open daily in the summer from noon until 8 p.m. through Labor Day. For more information, call Jim Cook, assistant professor of regional and community affairs, 882-3072, or Anita Blanchar, 445-2540.

## Counseling receives new accreditation

Counseling Services at UMC has been accredited by the International Association for Counseling Services in addition to a long-standing accreditation

from the American Psychological Association, according to director James Irvin.

In the report recommending accreditation, the IACS site visitors wrote that "an unusually well-qualified senior staff along with a large group of pre-doctoral interns gives evidence of a strong commitment to the service and training missions of the agency. They are especially effective in the areas of individual counseling/psychotherapy, supervised training, career planning and testing services."

According to Irvin, the accreditation provides a validation to the public on the quality and availability of UMC Counseling Services.

## Staff Council meets, discusses supervision

Feelings ran high at the May 8 Staff Council Meeting, as members discussed supervisor intimidation of staff and the general problem of incompetent supervisors on campus. One suggestion was to provide better supervisory training for middle managers.

Also at the meeting:

- Betty Pascoe, assistant director of the Employee Assistance Program spoke on services EAP can provide staff. Two services most used by staff are financial and family counseling, she said. Pascoe discussed the establishment of a services co-op here as one answer to inflation, such as faculty providing professional services in exchange for services by staff members. She stressed the importance of feeling a sense of community here.

- Brenda Procter, head of the communications committee, reported that the committee has met with Steve Shinn, director of publications and alumni, to discuss ways to include all faculty and staff in the 1980-81 directory.

- Chair Alan Jones reported a wrap-up of Staff Recognition Week. The week went well, he said, but some Staff Recognition Week posters were removed from bulletin boards in the physical plant area. And although supervisors received letters requesting they tell their employees about the week, many employees said they learned of the week only through *Mizzou Weekly*.

- The formation of a committee to look into staff development was discussed.

- The wide variety of jobs within the administrative/professional staff category was discussed. Many outstanding people were nominated for the staff award from this category. Jones stressed that persons were evaluated on how they performed within their jobs, not on the type of job itself.

## Nursing program accepting students

Spaces remain in a UMC program to prepare registered nurses to provide primary care services.

The one-year program broadens the skills of professional nurses interested in a joint physician-nurse practice. Tuition is paid by a grant from the Kellogg Foundation.

Applications will be accepted until June 1 for the 1980-81 class beginning in late August.

The first portion of the program is spent at University Hospital in Columbia. From March until the following August, nurses will gain clinical experience by working with physician preceptors in rural Missouri.

Applicants must be licensed Missouri nurses with a commitment to practice in rural Missouri. More information is available by contacting the Family Nurse Practitioner Program, Department of Family and Community Medicine, NW 509 Medical Sciences Building, Columbia, Mo. 65212.

medicine, veterinary medicine) is stable because of enrollment quotas.

## Craft workshops offered this summer

Nine workshops in crafts such as ceramics, wood sculpture photography and stained glass and a special workshop for children will be offered this summer semester by the MSA Craft Studio, 203-207 Brady Commons. The studio also has a dark room for photographers. Craft Studio memberships are open to all members of the University community and their families.

Student craft and darkroom memberships for the summer are \$1 for students, \$2 for student-families, and \$2.75 for faculty-staff family memberships. Memberships and enrollment fees can be paid at the Memorial Union ticket window.

For more information, call the Craft Studio at 882-2889, or the Memorial Union ticket window at 882-4640. Summer classes include:

**Ceramics** — 7-9 p.m., beginning June 24. Learn handbuilding techniques and be introduced to the potter's wheel and glazing. Six sessions, \$14.

**Pot Throwing** — Three private, one-hour lessons on the potter's wheel. Check the Memorial Union ticket window for cost and starting dates.

**Basic Woodworking** — Learn to use power and hand tools safely and receive instruction in design, glueing and finishing techniques. Six sessions beginning June 24, \$14.

**Wood Sculpture** — Learn to make wood move into sculptural forms and toys. Use of hand and power tools taught also; six sessions beginning June 26, \$14.

**Wood IQ Course (I qualify to use power equipment)** — One session, \$5, offered on the following dates: June 17, June 19, July 2 and July 9.

**Four-Harness Weaving** — Learn pattern drafting and warping for four- and eight-harness looms. Six session workshop, 7-9 p.m. Begins June 25, \$18.

**Tapestry Weaving** — For beginning and intermediate weavers. Five sessions, 6:30-9 p.m., beginning June 23, \$14.

**Stained Glass** — Learn to cut glass, apply lead and copper, and solder to form finished pieces. Six sessions, 7-9 p.m., beginning June 26, \$14.

**Children's Workshop** — A workshop for children aged 6 to 11 in clay, candle, printmaking and much more. Six sessions beginning June 15, 2:30-3:30 p.m. Sundays, \$14.

**Black and White Photography** — Designed for beginning photographers. Covers camera operation, developing and printing. Six sessions, beginning June 23 and June 24, 7-9 p.m., \$14.

**Color Photography** — Check with MSA Ticket Window for times of individual instruction. Two two-hour sessions, \$35.

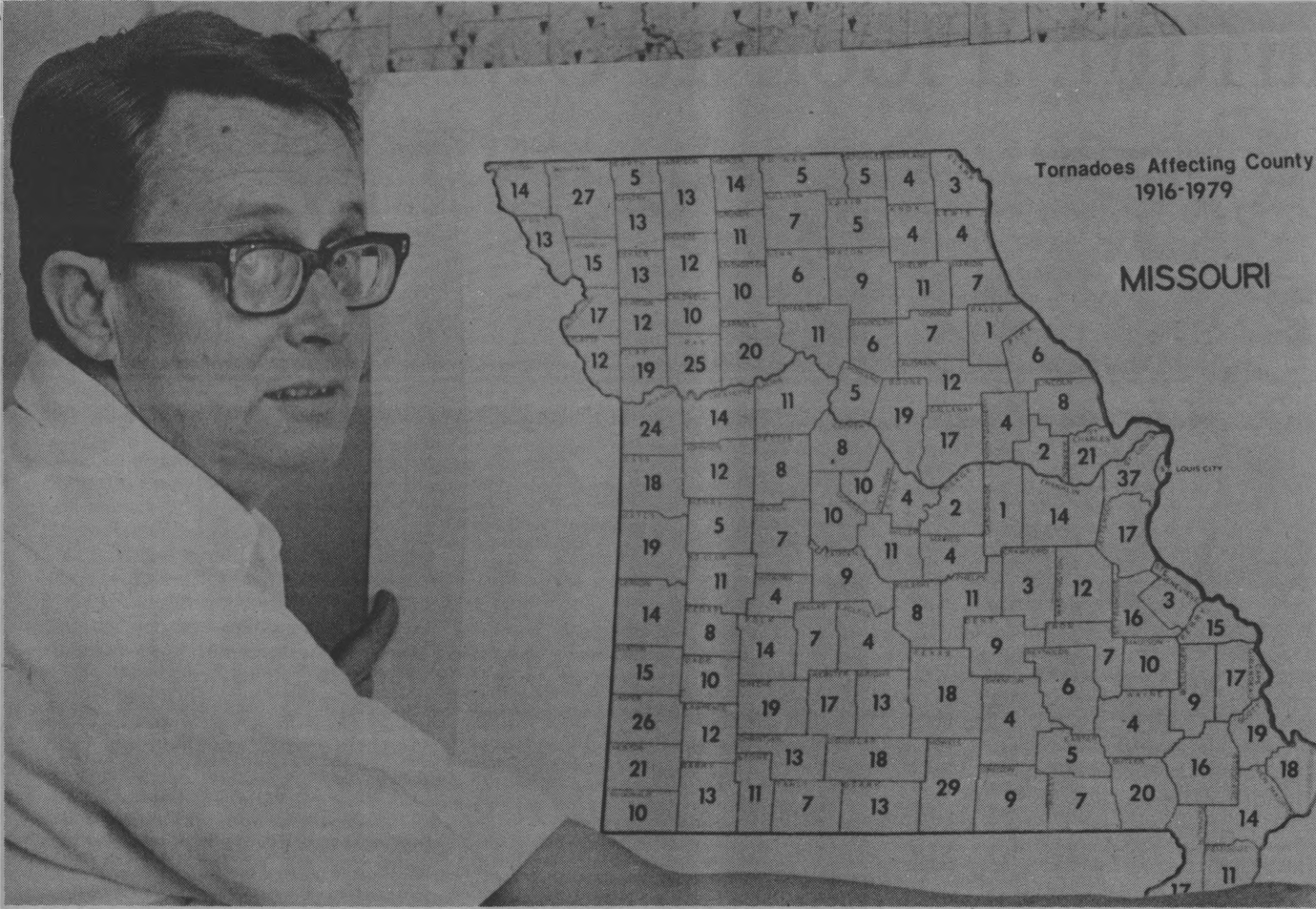
# MIZZOU MONTHLY

Published the first Friday of every month except January and August by the Office of Internal Communication, University Relations Division, 329 Jesse Hall, with the cooperation of faculty and staff councils. News deadline is the last Friday of each month.

Advisory Board: Bob Rowland, David Hentges, Richard Hocks, Delmar Hatesohl, Luverne Walton, Brenda Procter, Mary Miller, Richard Lewis, Sandy Clark, Jimmie Brechbuhler, Ramona Howard.

Editor: Catherine Kernan  
882-6211

Mark Kempf



Professor Grant Darkow holds a map showing that myths to the contrary, there are no counties in the state "safe" from tornadoes. Most of the discrepancies can be attributed to factors such as population density. In counties with only a few people per square mile, the chances of a tornado being reported, or causing property damage, are not as high as in more heavily inhabited areas. Although no area is safe, western Missouri counties are more likely to experience tornadoes because they are close to the national "tornado alley" that extends from north central Texas to Nebraska. Figures indicate the total number of tornadoes reported in each county from 1916 to 1979.

## Tornadoes from page 1

perience more than their fair share of twisters, Darkow says. Over the long run, they would have twice as many tornadoes as counties in the center of the state, he says.

A very slight decrease in tornado incidence from South to North was also revealed by the study.

Like thunderstorms, tornadoes tend to occur during the hottest part of the day. More than 80 percent of the tornadoes in Missouri occur between noon and midnight, the majority during March, April, May and June.

Before reporting accuracy was improved, many tornadoes were reportedly on the ground for miles and miles, Darkow says. In reality, several different funnels spawned by one thunderstorm

were being mistaken for the same twister. The average tornado in Missouri moves along the surface at 30-40 mph and touches down for 3 to 6 miles, Darkow says.

Once a tornado touches down, which can be anywhere, there is no way of telling where it will go, although the storms tend to follow a northeasterly path.

"The idea that geographical features, like rivers or bottomlands, influence tornadoes, is false. In fact, in some parts of the state people think that tornadoes follow rivers, elsewhere people think rivers stop them," Darkow says.

In reality, neither is the case. Twisters have gone up and down hills, showing equal destructive force on the lee and windward sides. Other twisters have crossed river bottoms and valleys.

"Every area has tornado myths which usually give people a false sense of security. Burnett's Mound outside of Topeka, Kansas, was supposed to 'protect' the town. But in 1966 a tornado cut a path across the mound and 13 miles of Topeka," Darkow says, noting that there are many other such examples.

If a tornado does occur, head for the basement, Darkow says. Which corner isn't as important as getting there, he emphasizes.

If you don't have a basement, go to a closet or bathroom at the interior of the building's lowest floor. Darkow says such areas often remain virtually untouched even when the rest of the house is destroyed. They are also far from exterior doors and windows, an additional benefit.

If you find yourself away from shelter,

seek out a ditch or low spot and hug the ground. Don't try to escape a tornado in your car — you'll be in more danger there than inside your home or in a ditch.

Darkow also cautions against losing valuable time, and possibly your life, by trying to open windows to "save the house." Opening windows is fine when there is a tornado watch — which indicates that conditions are ripe for a storm — but not when a tornado is actually in the area.

"If a twister does hit your house, the windows and doors will be destroyed immediately," Darkow says. "If you're near a window or door you could be killed by flying glass or debris, which may be moving as fast as a bullet. So, head for the basement or small rooms in the interior of the building's lowest floor."

—Larry Myers

## Procedures change for reporting leave

Two major changes in reporting vacation and sick leave for administrative, service and support staff are taking effect July 1.

First, persons will be recording time accrued or used in hours rather than days; and second, accrued vacation and sick leave must be recorded by record-keepers each month.

It is hoped that the changes will strengthen control and accuracy in the records and allow for an easier transition to the new payroll/personnel system now being developed, says interim Vice Chancellor for Administrative Services Frank Quattrocchi. The system should also provide consistency in posting time by all divisions and departments, he says.

Other policies stated in the *Business Policy and Procedure Manual* will continue, he says. Specifically, the following should be observed:

- Official vacation and sick leave records are not to be maintained by the employee him or herself. Also, the records should be subject to periodic review by someone other than the individual maintaining the records.

- All absences due to vacation or sick leave must be reported by the employee on UMUW Form 60, "Report of Absence," and submitted to the individual responsible for approving the absence. This policy includes all employees,

exempt as well as non-exempt. The forms must be submitted no later than a week after return from the absence.

- All absences should be posted to UMUW Form 61 "Record of Vacation and Absence due to Illness" by the record-keeper within three working days after receipt of the UMUW Form 60. The form 61s should not reflect accrued vacation in excess of the maximum allowable (a week over the maximum vacation amount that can be earned in a year) or negative balances for either vacation or sick leave.

## New ranges assigned to non-exempt staff

The proposed office/technical titles and new range assignments printed in last week's *Mizzou Weekly* apply only to non-exempt staff assigned to the Office/Technical Matrix, says Assistant Personnel Director Steve Neely. Persons in the secretarial/clerical and technical/paraprofessional classifications are assigned to this range. According to campus guidelines, these staff will receive a minimum raise of at least 8 percent, with some persons receiving more as they are raised to the new minimums in their classifications. A 1 percent merit increase has also been allocated for this category, and supervisors are being urged to apply proportions of the merit increase to those employees affected most by range compressions.

Exempt administrative/professional staff are assigned to a different salary range — the Administrative/Professional

Range. For these staff, the range minimums and maximums have both been increased by 8.5 percent. Persons whose salaries fall below the new minimums must be raised at least to the minimums, but for others, increases will be given only for meritorious service. Proposed campus guidelines for salary increases have established a funding base of an average of 8.27 percent for this category.

For union-eligible service and support staff assigned to the Service/Maintenance (four-step) Wage Matrix, the amount of the yearly increase has not yet been announced, pending discussions with union representatives.

For teaching, research and extension faculty, quality of performance is the criteria for salary adjustments. Proposed guidelines have established a base of an average of 8.27 percent for salary increases in this category.

At this time, all salary raises are still tentative, awaiting the governor's signature on the University's appropriations bill.

Staff members who have questions on their titles and range assignments may call the wage and salary office or Steve Neely at 882-2601.

## Titles, ranges reported incorrectly

Several office/technical titles and range assignments were reported incorrectly for hospital personnel in the

May 23 *Mizzou Weekly*. The correct titles and their old and new ranges are:

Assistant Chief Radiologic Technologist, previously classified as M-26 is now at range 62; Cardiovascular Technician, previously classified as M-21 is now at range 59; Graduate Radiologic Technologist, previously classified as M-19 is now at range 59; Hospital Security Officer II, previously classified as M-16 is now at range 57;

Patient Accounts Representative, previously classified as M-20 is now at range 58; Radiologic Specialty Technologist, previously classified as M-24 is now at range 61; and Senior Registered Respiratory Therapist, previously classified as M-26 is now at range 62.

## All can benefit through EAP program

The Employee Assistance Program does more than help solve University faculty and staff problems through consultation and referral, says director Dick Thoreson. The EAP also makes referrals for experiences and services that can enhance the University employee's skills and renew interests.

Typical referrals might include career planning, assertion training, time management, pre-retirement planning, financial planning, stress management, or development of new spare time interests.

"There is a resource now available to help you make your future more rewarding," says Thoreson.

# The Herbarium: a look at UMC's roots

A herbarium is more than a cemetery for plants. It's a scholar's laboratory and a museum of natural history.

The UMC Herbarium has more than 250,000 plant specimens with the largest single collection of Missouri flora: more than 100,000. Its mycological collection (tiny plants mounted on slides) numbers more than 25,000 and contains one of the best fungi collections available. And its paleobotanical collection, largely composed of plant material from the state's fossil floor, numbers more than 15,000 specimens.

The plants are pieces of the giant jigsaw puzzle of life: grotesque and beautiful, diverse and orderly, changing and constant, unique and prolific.

"In a sense, we work with the foundation of life's entire support system," says David Dunn, herbarium curator and professor of biological sciences. "Plants are the supportive system of the living world — including man. They're extremely important for survival. Green plants capture the sun's energy. Without plant conversion, the animal kingdom couldn't exist."

From Dunn comes the impression that agronomy, horticulture and botany wouldn't exist without taxonomy, the science of classification.

Physicians, law enforcement officers, state health officials, even utility companies have sought out taxonomers — not to mention those agronomists, horticulturists and others involved in basic floral research.

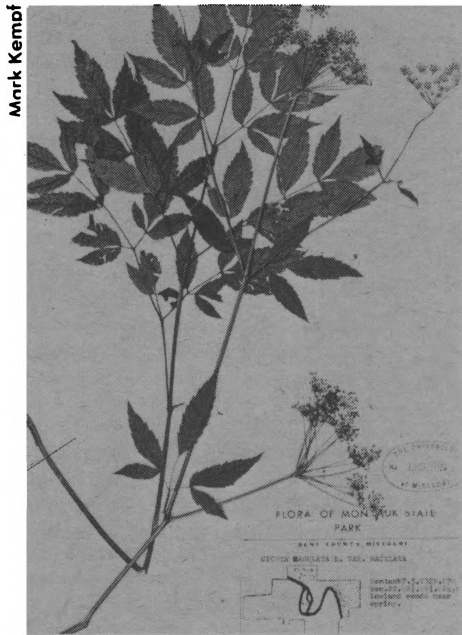
A few years ago, the Missouri Division of Health, alerted to the possible importation of a highly-toxic material in voodoo dolls, contacted Dunn. He found the poisonous Jequirity bean (also known as Indian licorice) was used for the eyes. The dolls were promptly removed from merchants' shelves.

On another occasion, Dunn was consulted after two youths ate "some mysterious" roots they thought to be carrots and became violently ill — with one boy dying.

"All I had were root shavings," said Dunn. "When I bit into one of the chips, the (highway patrol) officer who brought them over nearly had a hemorrhage. The chip had the taste of carrots and I was able to identify it as water hemlock."

Physicians, now knowing what they were treating, were then able to save the boy's life.

In another twist of fate, authorities stopped a vehicle for a traffic violation and found a large cache of cacti.



"Some mysterious roots" — deadly water hemlock

Suspicious, they brought samples to Dunn for analysis.

His finding: The plants were peyote cacti.

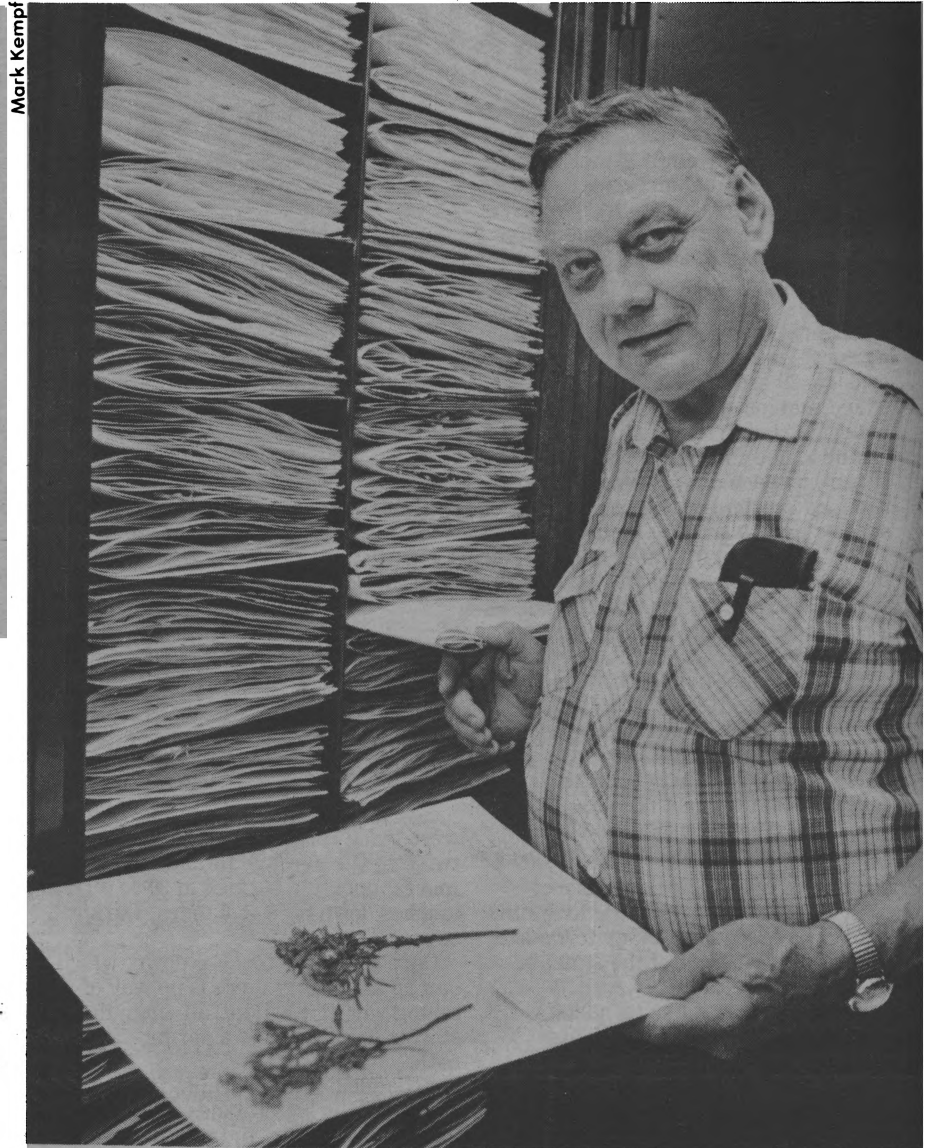
Result: Officers confiscated 80 pounds of the illegal drug.

Though the herbarium contains some specimens more than 200 years old, says Dunn, the collection itself began about the middle of the 19th century.

Over the decades, faculty, student and alumni contributions gradually brought the total number of specimens to more than 100,000. About 15 years ago, the herbarium received a major addition from the bequest of oak authority Earnest Palmer, a British subject who lived near Joplin and worked as a field collector for Harvard University's Arnold Arboretum. His bequest added more than 70,000 specimens.

As the herbarium grows, scholars from around the globe have become aware of the opportunities it provides for research. Within the past five years, 73 institutions have borrowed specimens.

In recent years, the herbarium has actively sought the addition of exotic species by trading duplicate specimens of its Missouri varieties. About a dozen



Herbarium Curator David Dunn

institutions have participated in the exchange program, allowing UMC to gain hundreds of new specimens from such varied geographic regions as Borneo and the Arctic tundra.

Of the earth's flora and fauna, only about five percent has been catalogued. Even experts, such as Dunn, acknowledge the need to rely upon manuals. "There's no way the specialist can even begin to memorize all the plant species in his own state," says Dunn. "It's not even possible to memorize all the genera (a classification for several

related species) because there are more than 50,000.

"We work at the family level (which includes several genera). Yet there are about 450 families. You become keenly aware of the families you work with, but for the rest, you have to be content with knowing where to look."

With the growing resources of UMC's herbarium, future scholars and generations of Missourians will have an excellent place to look.



Jim Bolmer

## Bicycling changes for 'easy riders'

Bicyclists will find riding a bit easier on the UMC campus this year as a result of more than \$4,000 of improvements recently approved. Some of the changes also benefit handicapped students.

Recommendations from the campus planning committee were presented to UMC Chancellor Barbara Uehling last May, then evaluated for costs and benefits, according to Kee Groshong, assistant business operations officer.

The majority of the changes, Groshong says, involve the installation of bicycle posts, modification of curbs and paving.

Improvements include:

- Lowering of the curb at the north-west corner of the Engineering Building and installation of ten bicycle parking devices.

- Installation of eight such posts on the west side of the Agriculture Building and another eight south of McKee Gymnasium.

- Relocation of posts that support the barrier chains on parking lots east (WC-

16) and west (WC-18) of the Arts and Science Building along Conley Ave. to improve bike traffic flow.

- Installation of a ramp at the steps between Curtis and Schlundt halls to aid the handicapped and pedestrians as well as cyclists.

- Modification of the curb and extension of the sidewalk at the southwest corner of Whitten Hall on Hitt Street.

- Installation of bicycle posts at the Hearnes commuter bus shelter.

- Paving of an area at the west end of the present ramp south of Pickard Hall to help bicyclists and the handicapped.

- Installation of ten bicycle posts on the north side of Tate Hall.

- Placing of safety bars on drain grates in the parking lot between Waters and Stewart Halls.

It also has been recommended that the needs of bicyclists be incorporated into any master plan for the UMC campus, Groshong says.

# Columbia campus adopts first policy on assignment and use of space

After a year of study, the campus has adopted a policy on space utilization. The policy was approved by Chancellor Barbara S. Uehling last month.

"Last fall we met with the Council of Deans and the Campus Planning and Advisory Committee, and began discussions on establishing a policy for assigning space," says Duane Stucky, director of the office of institutional research and planning. "At first we considered establishing a central office which assigns space to everyone. No policy existed before, and we wanted to establish one so that we would be consistent in space assignments. We also need a consistent policy on who can lease space and who should pay for it."

The policy is a first step in forwarding the campus' philosophy of regarding space as a resource, just as the budget is a resource, subject to allocation and recall.

Under the new policy, the various deans' offices will be responsible for allocating space within their schools and colleges, and the provost will assign space among various schools and colleges and for classroom use. Each vice chancellor is responsible for assigning space within his or her area of responsibility.

The policy, which applies to both indoor and outdoor space, is the following:

## General Policies

1. All space controlled by the Columbia Campus, both indoors and outdoors, is subject to allocation and reallocation for a specified use by a designated campus unit. The responsibilities for assignment of space and the responsibilities for effective use of space will be the same as apply to the budget resource.

2. Important objectives in the assignment of space are: a) to provide an accurate and comprehensive source of information to support space planning and management; b) to promote the orderly and efficient use of space; and c) to foster a wholesome environment for students, faculty, and staff in all of their activities.

3. No space assignment is permanent. However, reassignments should be well planned to minimize interruptions to programs.

4. In the interest of greater efficiency of use of space, the following policies regarding assignment and use of classrooms prevail:

a. According to needs indicated by

utilization studies, classrooms are assigned to the Classroom Pool of the Office of Admissions and Registrar for scheduling of classes. That office has full and final authority to schedule classes in that pool for the most efficient use of these instructional rooms. This includes the responsibility of rescheduling classes to more effectively utilize classroom space.

b. Some classrooms and highly specialized instructional rooms are assigned to specific colleges or departments. Such rooms which are suitable for use by other classes must be made available for this purpose when not in use by the college or department to which assigned.

5. Multiple offices for a faculty member are provided only when her or his duties clearly require office space in more than one location. The burden of proof of need rests heavily upon the person and department requesting an extra office.

6. At the discretion of the college, office or laboratory space may be provided to faculty emeriti, provided that the space needs of the regular faculty are fully met.

## Institutional Research and Planning Responsibilities

1. Institutional Research and Planning will maintain a centralized space inventory file on all campus space. That includes information on the use of space and the unit to which space is assigned.

2. Institutional Research and Planning is responsible for conducting periodic reviews of the utilization of all space and recommending allocations and reallocations when necessary to the Chancellor and Provost. Typically such review will involve application of space needs modules and comparisons on relative space use by peer programs.

3. Institutional Research and Planning will coordinate moves involving the reassignment of space from one college or office to another. A list of colleges and offices as defined for this document is listed in Appendix I, available from the office of Institutional Research and Planning.

## Colleges and Administrative Office Responsibility

1. It is the intent of space assignment and utilization policies that each college or office have responsibility for the efficient use of all space assigned to it and

its user departments, subject only to the space assignment controls indicated below. This responsibility can best be exercised if each college or office designates one of its officers to handle all space problems within the organization and to provide liaison with Institutional Research and Planning.

2. Approval by Institutional Research and Planning is required in the following cases:

a. Whenever the occupancy of a space is to be shifted from one college or office to another.

b. Whenever space provided by new construction or major remodeling is to be assigned. The assignment of such space will be made in accordance with the intended purposes of the construction project. Information needed by Institutional Research and Planning to complete space inventory records for the new space and to determine disposition of old space will be furnished by the appropriate college or office.

c. Whenever space is occupied in buildings acquired by the campus or any of its agencies through purchase, lease, or gift.

3. Institutional Research and Planning is to be notified in the following cases in order that an accurate inventory of space be maintained:

a. Whenever the use of a space is to be substantially changed; for example, when a library room is to be converted to office use, or when a teaching laboratory is to be converted to a research laboratory, or when a faculty office is to be converted to a graduate office. Reference to room type codes and definitions, which are attached in Appendix II, available from the office of Institutional Research and Planning, may be helpful in determining if the change is substantial enough to require a notification.

b. Whenever the occupancy of a space is to be shifted from one department to another within the same college or office.

c. Whenever the delineation of a building is to be changed by installation or removal of partitions or walls.

4. No assignment of space or notification is required when the occupants of a room are changed provided there is no change in the type of use or space is not transferred from one department to another.

## Procedures

1. Requests for space assignments should be made through the same administrative channels as are budgetary requests.

2. Requests should be made well in advance of need. Normally, even minor reassignments of space require several months to arrange.

3. Notification to Institutional Research and Planning of changes in type of use and shifts between departments within a college or administrative office should normally be handled by letter.

4. All IDO's that request improvement estimates and all requisitions for alterations, equipment installation, or moving will be referred to Institutional Research and Planning by the Office of Facilities Management for review to insure that changes will be reflected in the space inventory and that the proposed action: a) does not conflict with existing or contemplated space assignments; b) does not conflict with planned construction or rehabilitation projects; and c) is in concert with the efficient use of space resources.

5. Annually, each college, department, and other campus agency will be requested to audit a list of spaces assigned to it. The checking of this list and the reporting of any errors or questions to Institutional Research and Planning will help keep the space inventory up-to-date and avoid any misunderstanding about the assignment status of any particular space.

6. Periodically, Institutional Research and Planning may conduct physical audits of space assigned to various campus units. Such audits are arranged with the department through the appropriate college or administrative office and are intended to maintain the accuracy of the space inventory, to survey the functional adequacy of rooms and buildings, and to afford an opportunity for discussion of space problems.

## Outdoor Spaces

1. Drill Areas, athletic fields, gardens, crop lands, and similar spaces used regularly by colleges are subject to assignment and reassignment in the same manner as rooms in a building.

2. The Office of Institutional Research and Planning must be consulted on the location of each new building, building addition, parking lot, street, road or bikeway, dump area, or other outdoor facility or project that might conflict with the interests of any other agency of the University.

# UMC researchers work to halt body's self-destruction

Key discoveries concerning the nature of antigens, substances which cause harmful chemical antibodies to be formed in self-destructive diseases such as arthritis, lupus and mixed connective tissue disease, have been made by researchers at UMC. The work could lead to improved methods of detecting, preventing, treating and understanding diseases that pit the body against itself.

The body's immune system normally responds only to the presence of foreign matter, such as bacteria, by producing chemicals or antibodies that help destroy the invaders.

But, in persons with lupus, mixed connective tissue disease and some forms of arthritis, the body mistakes part of its own naturally-occurring structure as foreign. Consequently, the immune system begins producing antibodies that may cause injury to the body instead of providing protection.

The antibodies not only serve as indicators of these auto-immune diseases,

they may also play a role in creating associated problems . . . for example, kidney damage in the case of lupus, says Gordon Sharp, director of the division of immunology/rheumatology at the UMC Hospital.

Sharp, who first described mixed connective tissue disease (MCTD) eight years ago, Paul Agris, UMC associate professor of biological sciences, and Makoto Takano, a visiting scientist from Keio University, Tokyo, Japan, now have succeeded in isolating and analyzing the nuclear antigen associated with MCTD.

In addition, work is nearing completion on a second antigen associated with lupus, a disease that can strike at any age but which is most common among young women, says Agris, also president of the American Foundation for Aging Research. Both findings are "firsts" in the field.

Identification of the specific antigen

molecules to which antibodies are produced in these diseases has enabled Agris, Sharp and their co-workers to proceed with development of a highly sensitive test to detect them. Such a test could provide clinicians with an accurate, easy-to-use method of identifying victims, and potential victims, of some auto-immune diseases.

"The more sensitive the test, the greater the likelihood of detecting the disease early," Sharp says. "With MCTD there may be no symptoms at first, or only very mild ones. With a good test we should be able to spot the condition earlier and intervene to keep the disease from developing."

Current treatments for auto-immune disease usually involve giving the patient large doses of cortico-steroid drugs that suppress the body's immune response mechanism. While this approach can often control the disease, it leaves the patient without any defenses against microorganisms. Even those which or-

dinarily are not harmful can prove deadly when immune responses are reduced.

It appears that early treatment with present methods, but with lower doses of cortico-steroids, can control MCTD and even result in total remission in some cases, Sharp says. Later in the year UMC plans to coordinate a multi-center study of people in risk of developing MCTD to discover if serious disease can be prevented with early treatment, he notes.

While Sharp cautions that it may require years before definitive answers are found, he hopes that identifying the exact chemical nature of auto-immune disease antigens, as well as developing a more sensitive test for them, will permit studies of the possible biological role of antibodies in some rheumatic diseases. The results of these studies could lead to new, more specific and safer treatments for such problems he feels. In addition, the research may have additional benefits.

# Graduate Faculty Senate

April 17 1980

## Call to Order

The meeting, held in C208-210 Brady Commons, was called to order by Pres. Stewart at 3:40 p.m. Forty-three members were present, also GSA Representatives Seelinger and Hemphill, and Dean Minor.

## Approval of Minutes

Minutes of the March 21 meeting were approved.

## President's Report

a) The Futures Committees' reports have been received by the Executive Committee and are being reviewed in preparation for discussion and recommendations at their next meeting. Those Senators who have suggestions or comments about activities of the Futures Committees are urged to present them to their Sector Chairperson so that they can be considered by the Executive Committee.

b) The next regular meeting of the Senate, scheduled for May 8, will be held in the Student Union Auditorium. A special event will be the honoring of retiring members of the Graduate Faculty. All Senators are urged to attend.

## Secretary's Report

None

## Committee Reports

a) **Academic Affairs:** In the absence of Prof. Creighton, Pres. Stewart reported that the Committee was evaluating master's degree requirements, particularly research activities and theses. They are also beginning to look critically at the doctoral degree requirements. The Committee will welcome suggestions and comments from Senators.

b) **Membership:** In Prof. Nelms' absence, Pres. Stewart reported that of the 170 reapplications for membership in the Graduate Faculty, only 10 were referred to the Membership Committee because of a split vote (department/sector). The approved applications will be referred to the Chancellor through the Graduate Dean's Office for final action. The Committee is continuing its study of departmental procedures for nominating members to the Doctoral Faculty.

c) **Problems and Procedures:** Prof. Zieha reported that the Senate elections had been successfully carried out.

d) **Research Affairs:** Prof. Addinger commented briefly on the organization and functions of this committee. He pointed out that each sector was represented by two persons on that committee, and that it was hoped that advice and recommendations from the Senators would be transmitted to the Committee through their sector representatives.

e) In the absence of Prof. Irvin, Pres. Stewart reported that the **Ad Hoc Committee on Relationships of Areas to the Graduate School** had developed their operating procedures and were planning to meet with each of the area directors and other appropriate representatives as the first step in their evaluation process. The Committee will welcome any suggestions and/or advice from Senators.

## Sector Reports

- a) **Behavioral Sciences:** No report
- b) **Biological Sciences:** No report
- c) **Humanities:** In the absence of Prof. Peden, Prof. Saylor reported that a number of course proposals had been dealt with, and that new officers of the Sector had been elected.
- d) **Mathematical Sciences:** No report
- e) **Physical Sciences:** No report
- f) **Social Sciences:** No report

## GSA Report

Bob Seelinger reported that elections of the GSA have been held and that Hoyet Hemphill was the new President. He was introduced to the Senate and formally welcomed by Pres. Stewart.

## Graduate School Report

None

## Other Business

Pres. Stewart commented that immediately upon adjournment of the regular Graduate Faculty Senate meeting there would be a special meeting for the election of officers.

## Adjournment

At 3:59 p.m.

Howard C. Hopps, Secretary GFS

Bob R. Stewart, President, GFS

## Call to Order

Pres. Stewart called the meeting to order at 4 p.m. and briefly explained the voting procedures.

## Nominations

a) Nominations for the office of the President were called for:  
Prof. Tom Yonke (nominated by Prof. Addinger)

Prof. Ben Nelms (nominated by Prof. Burton)

Prof. Howard Hopps (nominated by Prof. Zieha)

It was moved and seconded that the nominations cease; the motion passed.

Prof. Hopps asked that his name be withdrawn from consideration because he anticipated being out of the country during promotions of the next academic year; Prof. Zieha agreed to withdraw the nomination.

Ballots were cast, and Prof. Yonke received the majority of votes.

b) Nominations for the office of Secretary were called for:

Prof. Charles Saylor (nominated by Prof. Kung)

Prof. Ben Nelms (nominated by Prof. Burton)

Prof. Saylor asked that his name be withdrawn from consideration because the pressure of other work would not allow him adequate time to meet the demands of the position; Prof. Kung agreed to withdraw the nomination.

It was moved, seconded and voted that the nominations cease.

It was moved by Prof. John Gross and seconded by Prof. Richard Warder that a unanimous ballot be cast for Prof. Nelms. The motion carried.

## Sector Elections

The President asked each Sector that had not held its elections to reassemble in Room C208-210 immediately after adjournment of the special meeting and carry out these elections.

## Adjournment

At 4:25 p.m.

Howard C Hopps, Secretary

Graduate Faculty Senate

Bob R. Stewart, President

Graduate Faculty Senate

## 1980-81 Sector Officers

**Biological Sciences:** Chairperson, Bill Cumbie; Academic affairs, M.E. Bailey, A.B. Stephenson; Membership, H.K. Byington, G.S. Henderson; Problems and procedures, J.M. Asplund, L.D. Olson.

**Behavioral Sciences:** Chairperson, John McGowan; Academic affairs, Judy Grosenick, Joseph Thrope; Membership, R.L. Burton, Bob Stewart; Problems and procedures, James Cook, John Mueller.

**Humanities:** Chairperson, Donald Sievert; Academic affairs, Norman Land, Mary Smythe; Membership, Donald Anderson, Mary Lago; Problems and procedures, Bonner Mitchell, Charles Sherman.

**Mathematics Sciences:** Chairperson, Gordon Springer; Academic affairs, Charles Slivinsky, Mike Leonard; Membership, Mark Jacobs, Earl Charlson; Problems and procedures, Dennis Sentille, Mriganka Ghosh.

**Physical Sciences:** Chairperson, Richard Warder; Academic affairs, Roger Duffield, David Troutner; Membership, John Baumann, G. Himmelberg; Problems and procedures, Franklin Harris, David Cowan.

**Social Sciences:** Chairperson, Peter Gardner; Academic affairs, Sandra Helmick, Earl Lundgren; Membership, Loretta Hoover, Donald Osburn; Problems and procedures, Rex Campbell, Eugene Zieha.

May 8, 1980

## Call to Order

The meeting, held in the Memorial Union Auditorium, was called to order by Pres. Stewart at 3:43 p.m. Thirty-eight members were present, also GSA Representative Hemphill, Deans Blount, Minor and Wallace, and guests.

## Approval of Minutes

The minutes of the regular GFS meeting of April 17, also those of the special meeting of the Senate, held the same day, were read by the Secretary and approved.

## Recognition of Retiring Members of the Graduate Faculty

The following retiring members of the Graduate Faculty were introduced and honored. In each instance a statement of tribute was read.

Prof. Virginia Fisher, presented by Prof. Phyllis Pirner

Prof. Albert Hagan, presented by Prof. Donald Osburn

Prof. Howard Heding, presented by Prof. Charles Koelling

Prof. J.M. Pohlman, presented by Prof. Dale Sechler

Prof. E.R. Sears, presented by Prof. Gordon Kimber

Prof. Edward Lambert, presented by Prof. Ernest Morgan

(copies of the statements read are included in the original minutes)

## President's Report

The President reported that:

a) Prof. Yonke had been elected as the Senate's representative to the University-Wide Doctoral Council, replacing Prof. Homer Thomas, who had served very effectively in this position.

b) the Executive Committee, recognizing the need for action by Sectors during the summer, particularly on course requests, had requested each sector to develop mechanisms whereby such action could be assured.

c) chairpersons of the Senate's standing committees had not yet been elected, but this would soon be accomplished. This is an important action because the chairperson of each of these committees will be a member of the Executive Board, thus representing all sectors in the particular area of concern.

d) at the close of this academic year, it was considered appropriate to comment on some of the major accomplishments of the Senate:

1) A continued, positive dialogue with

Chancellor Uehling highlighted by her presentation of Dean Blount and her remarks at the first Graduate Faculty Senate meeting of the year.

2) A positive cooperative working relationship between the Graduate Faculty Senate, the Executive Committee, and the Office of the Graduate Dean and Vice Provost for Research under Dean Blount's leadership.

3) The opportunity to meet with the candidates for the position of Provost and to provide feedback to the Provost selection committee.

4) The appointment of a liaison representative to the Senate from the School of Law, to further communications concerning graduate education and research on the campus.

5) The revision of forms used for the rescreening process for the Doctoral Faculty by the Behavioral Sciences and Social Sciences sectors.

6) The appointment of two ad hoc committees, one to look at research concerns of the faculty, and the second to examine relationships between areas and the Graduate Faculty Senate and the Graduate School. These two committees will continue functioning into the next school year.

7) The efficient and effective manner in which the routine business of the Senate had been handled in terms of course approvals and screening and rescreening of applicants to the Doctoral Faculty and the screening for the Graduate Faculty.

## Secretary's Report

The Secretary made a brief report in which he expressed his appreciation to the Senators for the opportunity to serve as Secretary.

## Committee Reports

a) **Academic Affairs:** Prof. Creighton commented on some recent problems related to topics courses, particularly the procedure currently being practiced by some departments — changing topics courses to problems courses by assigning subtitles to the problems course, an obvious subterfuge to circumvent regulations. He discussed also the Committee's consideration of minimum requirements for the Masters degree, with particular concern for evidence of original work. He read a list of additional holdover items for action by the new Committee, as follows:

- to develop more stringent minimum requirements, particularly with regard to coursework, for Doctoral degrees
- to reevaluate the appropriateness of different levels of coursework for graduate degree credit
- to continue efforts to facilitate the offering of courses on a sustained, predictable basis
- to encourage and facilitate campus-wide coordination of course offerings
- to consider the use of pluses and minuses in the determination and recording of grades
- to reconsider the roles played by fourth and fifth graders on dissertations, and by third readers on theses
- to explore the ways by which teaching assistants are selected, with the intent of supporting the highest quality of teaching assistants and ensuring their effective performance
- to determine ways and means whereby GFS and/or the AAC can play a substantive role in formal departmental reviews
- to consider how directors of graduate studies are appointed or elected, and the appropriate type of relationships between them and the GFS
- to evaluate and make specific recommendations as to the number of votes required to determine whether a student passes or fails a graduate examination

Prof. Creighton urged Senators to transmit their views and suggestions about any of these items to the Committee.

He remarked that his Committee had produced a 13-page document which included a statement of duties and responsibilities of the Committee, recommendations pertaining to these, and specific forms developed by the Committee to facilitate appropriate action on topics courses. (A copy is included in the original minutes.)

It was moved and duly passed that Prof. Creighton's report be approved.

**b) Membership:** Prof. Nelms reported that 174 applications for reappointment to the Doctoral Faculty had been submitted; 168 had been approved, and 6 had not been approved. Of the 10 received by the Membership Committee for evaluation, 5 were approved and 5 were not approved. Seven applications for dissertation co-directors had been approved. Twenty-six applications for membership in the Graduate Faculty had been received, of which 19 were recommended for approval, 1 was not recommended for approval, and 6 were returned to the appropriate department or tabled.

Prof. Nelms stated that letters would soon be sent to departmental chairs reminding them of the qualifications for membership in the Graduate Faculty, and asking that they not present nominations for membership prematurely.

Continuing concerns of the Committee include:

- improvement of forms for Doctoral Faculty Applications
- improvement of procedures for reviewing applications for the Doctoral Faculty at the departmental level.

It was moved and duly passed that Prof. Nelms' report be approved.

**c) Problems and Procedures:** Prof. Zieha reported that the major election activities for membership in the Senate have been completed. Some replacements will be necessary for Senators going on leave, but this can best be handled at the beginning of the fall semester. Attention of the incoming Problems and Procedures Committee has been called to the question: What percentage plurality is required for election to the Senate?

It was moved and duly passed that Prof. Zieha's report be approved.

**d) Research Affairs:** Prof. Adldinger reported that his Committee will be continuing their work through the summer because of various delays in the beginning. The Committee is collecting and evaluating material, and plans to begin drafting its report soon. It is hoped that the report will be completed by the end of this academic year.

It was moved and duly passed that Prof. Adldinger's report be approved.

**e) Area Program Relationships to Graduate School:** Prof. Irvin presented the following report.

"The committee met to review its charge, and to develop a plan to obtain information and points of view regarding the specifics contained in the charge and other issues identified by the committee members. The committee is now proceeding to address the various issues.

"As a part of the committee deliberations, directors/chairmen of areas, graduate students, area affiliated faculty, graduate faculty not affiliated with an area, and graduate school administrators will be invited to meet with the committee or submit comments. In addition, fiscal and other data will be sought.

"The committee expects to issue a report to the Senate no earlier than December, 1980."

It was moved and duly passed that Prof. Irvin's report be approved.

#### Sector Reports

**a) Behavioral Sciences:** Prof. Burton reported that his Sector had six formal meetings this year, primarily to act upon recommendations by the Membership Committee and curricular matters. In addition, the Sector developed new criteria and new screening forms for membership in the Doctoral Faculty.

**b) Biological Sciences:** Prof. Yonke reported that, in addition to routine business, the Sector had addressed the question of selection of directors of graduate studies, a problem that will be carried over into the next academic year.

**c) Humanities:** Prof. Peden reported a year with essentially no problems. Activities of the Sector were concerned almost exclusively with curricular matters, and applications and reap-

plications for membership in the Doctoral Faculty.

**d) Mathematical Sciences:** Prof. Beem also reported a year with essentially no problems, in which major efforts were with curricular matters and applications and reapplications for membership in the Doctoral Faculty.

**e) Physical Sciences:** No report.

**f) Social Sciences:** Prof. Campbell reported that the Sector had three meetings this year and that operations were going smoothly. Major activities related to curricular matters and evaluation of applications and reapplications for membership in the Doctoral Faculty. In addition, the Sector developed new criteria and new screening forms for membership in the Doctoral Faculty.

#### GSA Report

Mr. Hemphill reported that the Graduate Student Association was in the process of preparing a formal report dealing with teaching assistants and research assistants, which included specific recommendations for action.

#### Graduate School Report

Dean Blount remarked that he had enjoyed and profited from the interaction with the Graduate Faculty Senate.

Commenting on activities related to the Weldon Spring Fund, he stated that more than 120 applications had been received, requesting funds in amount of nearly two and a half million dollars. Of these applications 24 had been selected and referred to the Office of the President. Twelve of these dealt with energy and twelve with "new directions."

Pres. Stewart expressed his personal appreciation, also that of the Senate, for the cooperation received from Dean Blount and the members of his staff.

#### Other Business

None

#### Adjournment

At 4:46 p.m.

Howard C. Hopps, Secretary  
Graduate Faculty Senate

Bob R. Stewart, President  
Graduate Faculty Senate

## Power to go to the new 60s elderly

Members of the 60s' "protest generation," many of whom will retire in 30 years, will help create a new role for older Americans, believes one of the nation's foremost experts on the sociology of aging, UMC's Donald O. Cowgill.

"Each generation ages differently. The next generation of old folks won't sit back and take it on the chin like previous one," Cowgill says. "Even if they hadn't been part of the so-called 'protest generation,' the next batch of elderly will be more educated, more active politically and socially and will insist on their rights."

A pioneer in the field of gerontology, the study of aging and the problems of old people, Cowgill predicts that 15-20 percent of the U.S. population will be 65 or over by 2010.

In primitive societies, as well as in America in the not-too-distant past, the elderly were treated with a great deal of respect and often ran the family. But modernization, with its emphasis on learning, technology, urbanization and rapid change, usually leaves the elderly behind and decreases their status, he notes.

Even in more tradition-bound societies, such as Japan and China, elders do not hold the position of prominence that they once did, says Cowgill, who has been involved in a number of cross-cultural gerontology studies. However, Cowgill says that the decline of status seems to have "bottomed out" in America.

"For the foreseeable future there will be a gap of a few years in terms of education, employment background and urban experience between the older generation and the next, but after years of widening, the gap will narrow," Cowgill predicts.

The previous generation of elders had it the worst, he feels. Already their status was declining in a rapidly-changing America while benefits, such as Medicare and inflation-adjusted Social Security, had yet to appear. The elderly, then, complained little about their lot in life. The next generation of retirees, however, will not be so complacent and will demand their rights, Cowgill believes.

Social Security is one of those rights. Support of the system will place a growing burden on the working population. But, Cowgill points out, in the broader view the increased cost of the partial support of the aged via Social Security will be more than offset by the decline in the number of children — who are totally dependent on working adults for their support.

As the number of elderly citizens rises, there will be a disproportionate increase in the percentage of women, according to Cowgill. He notes that in 1900 women lived two to three years longer than men, but the difference is now seven to eight years.

"In non-industrial societies, such as Thailand, normally three generations live together in an extended family, so the older women, as well as the older men, are assured of a place in society," Cowgill says.

That is not the case in the U.S., so new methods of dealing with the elderly and their special needs and demands will have to be found, Cowgill says. Multi-purpose activity centers, retirement communities, adult education classes, neighborhood health care facilities and special transportation services for the elderly are some of the approaches being tried.

"Old age in the future will be better than in the past," Cowgill believes, "because people now expect to do more than eke out a bare existence."



Mark Kempf

Retiring members of the graduate faculty were honored at the May 8 Graduate Faculty Senate Meeting. From left: (standing) Howard Heding, professor emeritus of education; Virginia Fisher, professor emeritus of child and family development; J. Milton Poehlman, professor emeritus of agronomy; Ernest Sears, professor emeritus of agronomy; (seated) Albert Hagen, professor emeritus of agricultural economics; and Edward Lambert, professor emeritus of journalism.

# 'Electronic historians' offer much broader view of the past

History . . . you remember it. In grade school you learned about notables like John Hancock, Ben Franklin and FDR. Such men did shape America. But what of the ordinary "little people" of the times? How did they influence the course of history?

"Until about 15 years ago historians found it virtually impossible to take a really broad, deep look at the factors that influenced certain events. For example, in analyzing presidential elections, historians usually concentrated on politicians' public statements and the like because there was no way to study the huge amounts of data contained in voting records," says Thomas B. Alexander. A history professor at UMC, and a pioneer in computer-assisted research, Alexander teaches a course on quantitative history.

Then, in the mid-60s, a new generation of computers that could handle the millions of bits of data involved came along and, in a sense, "electrified" the history field. For the first time it became possible to analyze voluminous data, such

as census rolls, rather than concentrating on the influence of a few powerful individuals.

"In 1965, at the University of Alabama, I was trying to analyze roll call votes from the Confederate Congress by hand," Alexander says. "I had the basic information on big sheets of paper and would pore over it, counting votes, making tick marks and so on. It occurred to me that I'd have to live to the age of Methuselah to get everything done."

Fortunately for Alexander the National Science Foundation sponsored a seminar that summer to introduce historians to computers. The rest, as they say, is history.

"I returned to campus and talked to people in the computer center. By year's end I had data that would have required months to put together by hand," recalls Alexander, who was among the first historians to utilize computers for research. His books, "The Anatomy of the Confederate Congress" and "Sectional Stress and Party Strength," were

pioneer works in computer assisted history, the latter winning several awards.

"Fleshing out" computer-generated data must be done by someone who has clearly conceptualized the problem, knows the subject thoroughly and who recognizes the realities of human interchange and experience, Alexander says.

For example, one of Alexander's students, Walter Kamphoefner, traced immigrants in Missouri to their hometowns in Germany. Without a special computer program that compared the pronunciation and spelling of names on German emigrant lists with Americanized versions of the names on Missouri census rolls and printed out the possible matches, the study would have been impossible.

Like much of the work that has been done with computers, Kamphoefner's study didn't change historical views of wealthy German immigrants, but did make it possible to trace the fortunes of

large numbers of lower and middle-class Germans, Alexander notes.

"It's a rare thing when computer investigations prove history wrong in any significant way," Alexander says. Rather, such work makes possible a broader, deeper understanding of historical forces and events.

"Historians have, until recently, produced 'elite' history that concentrated on the powerful, visible figures because there were no convenient tools to study larger groups. In a sense, such history looked only at the tip of the iceberg, ignoring the much larger, but more difficult to see portion, the masses," Alexander says.

In a sense then, the use of computers has "democratized" the study of history by broadening its focus. Rather than detracting from the significance of figures like Jefferson and Lincoln, "electronic historians" such as Alexander are better able to explain their actions in the context of the whole society. —Larry Myers



Members of the Fertilizer/Limestone Control Service Group recognized recently for service include (from left) George Skidmore, inspector, 10 years' service; Wehrmann, W. L. Baker, manager, 30 years' service; Homer Parmon, inspector, 5 years' service; and Mary Ann Summers, secretary (seated), 5 years' service. Missing are John Pipes, inspector, 15 years' service and Charles Libbee, supervisor, Agriculture Director's Office, 15 years' service.



The following physical plant employees received service pins this year: (from left) Ruth Schumate, administrative assistant, purchasing, 10 years; Jerry Bowser, supervisor, general stores, purchasing, 20 years; Doris Crane, receptionist II, purchasing, 15 years; Karen Turner, senior secretary, purchasing, 10 years; Guy Maddox, manager, stores, purchasing, 20 years.



The Fertilizer/Limestone Control Service Group recently gathered for a service award luncheon at the Memorial Union.

From left: George Gouker, security investigator, Agriculture Experiment Station, 20 years' service; Oscar Klippel, heavy agricultural equipment operator mechanic III, 25 years' service; Marion Ballard, assistant manager, agricultural research operations, 25 years' service; W. L. Baker, manager (seated), 30 years' service; and Robert Wehrmann, manager of registration, 25 years' service.

# People

**Eric Rinehart**, assistant professor of geology, has won the Langmuir Award for Excellence in Research for 1980 from the New Mexico Institute of Mining and Technology.

The award is made annually at New Mexico Tech's commencement ceremonies to the student or graduate who submits the best technical paper for publication in a recognized journal during the preceding year. The award carries a \$100 prize.

Rinehart is co-author of "The Geographic Extent and Shape of an Extensive Magma Body at Mid-Crustal Depths in the Rio Grande Rift Near Socorro, New Mexico," published by the American Geophysical Union in a book entitled, *The Rio Grande Rift — Tectonics and Magmatism*. Co-authors are Ilan Sanford and Roger Ward.

**John Love, Jr.**, professor of mechanical and aerospace engineering, is the recipient of the American Society of Testing and Materials Award of Merit for outstanding contributions to Committee E38 on Resource Recovery. The award, presented April 16 in Minneapolis, Minn., recognized Love's leadership in developing standards of resource recovery.

Love worked with industry representatives to develop specifications, testing materials, and a terminology thesaurus which would govern trash's development

as a fuel source for municipalities and industries.

The letter nominating Love cited his work as a founding member of the resource recovery committee and his guiding leadership which expanded membership and increased task groups and ad hoc committees.

**Gwilym S. Lodwick**, UMC research professor of radiology, has been named chairman of the National Institutes of Health's committee on diagnostic radiology and nuclear medicine for a two-year term beginning July 1.

The committee is responsible for scientific peer review of radiological research proposals submitted to NIH for funding.

Chairman of the School of Medicine's department of radiology from 1956 to 1978, Lodwick is internationally known for his contributions to the science of radiology. Much of his work has involved the application of computers in studying the diagnostic process and in automating the diagnosis of disease.

Often cited by scientific groups for his innovative research, Lodwick was most recently honored by the Finnish Radiological Society when he was presented a medal for his contributions to the science of radiology. He is one of two physicians outside Finland given honorary membership in the society.

Five College of Education faculty have been recognized as "Advisors of the Year" in a vote sponsored by the 42-member Education Student Council.

The criteria for selection emphasized that the advisors have a willingness to get involved with students, according to Ray Alonzo, council president.

Selected were **Irvin Cockriel**, associate professor; **Charles Schmitz**, assistant to the dean; **Robert Reifschneider**, director of educational placement; **Virginia Wheeler**, assistant professor; and **Renata Maiorino**, instructor.

**Ronald J. Ebert** becomes interim dean of the UMC College of Business and Public Administration July 1.

Announcement of Ebert's appointment to replace S. Watson Dunn was made May 22 by Chancellor Barbara Uehling, who revealed that the search process had failed to identify a person for regular appointment as dean. A process for a new dean's search will be announced shortly.

Ebert, 42, has been a member of the UMC management faculty since 1974 and has served as department chairperson since 1976. He holds the rank of full professor.

Prior to coming to UMC Ebert taught at the University of Washington from 1969-73 and spent four years with the Frigidaire division of General Motors. For three years he was supervisor of quality control for Frigidaire.

**Arvarh E. Strickland**, professor of history, and **Carolyn Dorsey**, coordinator of black studies and assistant professor of education, have been elected chairperson and vice-chairperson respectively of the Missouri Council for Black Studies.

The council was formed to promote the study of Black Studies throughout the state and is affiliated with the National Council for Black Studies.

**Mary Lee**, secretary in the office of the undergraduate dean in the College of Education, was recognized recently for her work with the Education Student Council. Lee was presented with a plaque thanking her for her efforts by Ray Alonzo, council president.

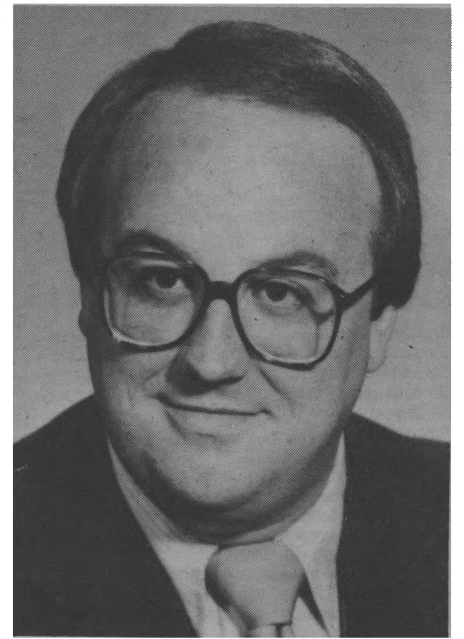
Alonzo described her as a "special lady" who knows most College of Education students. Assistant Professor Virginia Wheeler concurred, saying Lee has a "fantastic knack for knowing all the students who go through the office."

Lee is known for attending education students' events; in the community, she's also known as a volunteer at The Wardrobe, a non-profit agency providing clothing at minimal prices.

**Helmut Lehmann-Haupt**, professor emeritus of library science, has received the 1980 Gutenberg Prize awarded by the City of Mainz, Germany and the Gutenberg Society.

The prize, given once every three years, recognizes Lehmann-Haupt's contributions to understanding the Gutenberg invention, movable type.

During the fall semester, Lehmann-Haupt lectured at the University of Mainz on a Fulbright-Hays Award.



Thomas ShROUT:  
director of news services

**Thomas R. ShROUT**, assistant director of communications services at the Ohio State University, will become director of news services at UMC July 21. ShROUT is a 1972 graduate of the UMC School of Journalism.

The position was created as a result of a reorganization March 1 by University Relations director Sharon Yoder. News Services was previously called the Office of Public Information.

In his present position, ShROUT is responsible for state, local and national media relations, including the OSU TV news service. He also promotes the university's public affairs activities and has administrative responsibilities for that office.

For six years prior to joining OSU, ShROUT was a reporter/anchorman, writer and producer for WCMH-TV, Columbus, covering state, county and local news.

**Chancellor Barbara S. Uehling** was elected a member of Meredith Corporation's board of directors May 12.

Uehling replaces Richard S. Oldberg, who is retiring from the 10-member Meredith board.

Currently, Uehling is a member of the National Council on Education Research, a director of the American Council of Education and a trustee of the Carnegie Foundation for the Advancement of Teaching, all of Washington, D.C. She also is a director of the Mercantile Bancorporation, St. Louis.

Meredith Corporation, headquartered in Des Moines, is engaged in magazine, book and newspaper publishing, contract printing and broadcasting. The company also operates a national real estate marketing service and is involved in direct sales of selected consumer products and services.



Ernest Sears: distinguished service award

**Ernest Sears**, world-famous wheat geneticist who has worked at the University of Missouri for the past 44 years, was honored May 22 with the U.S. Department of Agriculture's highest recognition, the Distinguished Service Award.

Sears was cited for pioneering studies in plant breeding and basic contributions to genetic theory, wheat improvement and alleviation of hunger in the world.

He worked out techniques in plant genetics that have opened new

possibilities for economic improvement of wheat and for increasing its productivity and reliability as a food crop throughout the world. Many other agronomic and horticultural crops may be improved through application of genetic theory that he has developed from his career in the fields of cytology and genetics of wheat and its relatives.

Sears developed techniques for recognizing and transferring chromosome segments with desirable genes from nonwheats, such as wild grass, and inserting them into wheat chromosomes.

# Footnotes

A compilation of the activities of UMC faculty and staff



**Virginia Hancock**, senior academic advisor, arts and science dean's office, has spent the last 25 years with the University.



**Betty Whitmarsh**, senior secretary, atmospheric science, has 15 years' experience with UMC.



**Linda Sapp**, administrative associate I, chemistry, has spent the last 10 years with the University.



**Wanda Davis**, chief accounting clerk, payroll, has worked 20 years for UMC.

## Department of Agronomy

**Terry W. Barney**, research associate and **Chris Johannsen**, professor, received certificates of recognition for creative development of technology by George Smith, interim dean of the UMC College of Agriculture. The awards were made by the National Aeronautics and Space Administration for their work on "Mapping Land Cover from Satellite Images."

## Art History and Archaeology

**William R. Biers**, associate professor, has published a major new book *The Archaeology of Greece*, Cornell University Press, 1980. The book, the first comprehensive treatment of Greek archaeology since early in this century, is illustrated with 106 line drawings, 334 black and white photos and eight pages of color plates.

**David Soren**, associate professor, has been appointed director of the Cyprus American Research Institute in Nicosia, Cyprus. Soren continues for the third summer as co-director of the American Excavations at Kourion, Cyprus. He also recently published *Unreal Reality: The Cinema of Harry Kumel*, Lucas Brothers Publishers, Columbia, Missouri, 1979. In addition, Soren attended a UNESCO International Conservation Exposition in Rome this spring.

**Albert Leonard**, assistant professor, will spend June and July excavating at Naukratis in the Egyptian Nile Delta. Leonard will also conduct a survey of other sites within 25 kilometers of Naukratis. In August, Leonard will conduct an archeological survey of the Kouris River Valley, located behind the Kourion site where other UMC faculty and students will be working.

## Museum of Art and Archaeology

**John Huffstot**, assistant curator, will be making architectural drawings and surveying at the Apollo site with the American Excavations in Kourion, Cyprus.

## Center for Student Life

**Vicki M. Curby**, student service coordinator, attended a recent Washington Policy Seminar. Curby was among 75 education leaders invited by the Institute for Educational Leadership.

## Department of Classical Studies

**Meyer Reinhold**, professor emeritus, has published "Augustus' Conception of Himself" in *Thought*, March 1980; and "Robert Lowell's Uses of Classical Myths" in *Helios*, Spring 1980.

## Department of Community Development

**Jerry L. Wade**, assistant professor, presented "Energy, Community Development and the Future: Potentials and Pitfalls" to a conference sponsored by the Illinois Community Development Society. At the same conference, Wade conducted a workshop on the issues addressed in the paper.

Wade also presented "Energy and the Community: A Conceptual Rationale" at the 3rd Annual Conference on the Small City and Regional Community at the University of Wisconsin-Stevens Point. At the same conference, Wade moderated a related panel discussion and conducted a roundtable workshop.

**James Cook**, assistant professor, made a presentation on different perspectives of volunteer relationships to the 1980 Boy's Clubs of America national conference in Bal Harbour, Florida on May 29.

## College of Education

**Mark D. Reckase**, associate professor, and **Robert L. McKinley**, graduate research assistant, both with the Tailored Testing Research Laboratory of the Department of Educational Psychology, received a \$500 award for the best paper presented at the Association for Educational Data Systems convention in St. Louis. The title of the paper is "Computer Applications to Ability Testing."

Reckase and members of the Tailored Testing Research Laboratory staff presented a series of four papers to the American Educational Research Association and the National Council on Measurement in Education in Boston. The papers were: Reckase, "An application of tailored testing and sequential analysis to classification problems;" Wayne M. Patience, graduate research assistant, and Reckase, "Effects of program parameters and item pool

characteristics on the bias of a three-parameter tailored testing procedure." Patience, Reckase, and Richard A. English, professor, "An application of mastery testing procedures with college level students." Robert L. McKinley, graduate research assistant, "A successful application of latent trait theory to tailored achievement testing."

**Clifton L. Smith**, assistant professor, has been selected to a three-year term as national chairperson of the Professional Division of the Distributive Education Clubs of America.

Smith was recently awarded the 1979-80 research award by Epsilon Delta Epsilon, national honor fraternity in marketing and distributive education. The award is in recognition of his research study "A Competency Pattern Approach to the Management of Marketing and Distributive Education Departments in the Secondary Schools of Virginia."

Smith also published "The Tasks of a Department Head of a Secondary Marketing and Distributive Education Program" in the *Marketing and Distributive Educators' Digest*.

**John E. Elias**, associate professor, has been elected to a three-year term as secretary/treasurer of the National Council of Distributive Teacher Educators.

Elias conducted a two-day workshop for 150 vocational educators and members of citizen advisory councils in Indianapolis in March. The workshop was sponsored by the Indiana Advisory Council for Vocational Education.

Elias and **Jo Behymer**, assistant professor, have published "Training Institutes for Local and State Advisory Council Members" in the *Journal of Studies in Technical Careers*, Spring 1980. Elias and Behymer also completed a handbook for use by vocational education advisory council members.

**Edmund Ford**, associate professor, has accepted a Fulbright scholarship to rural Thailand for the 1980-81 school year.

## Ellis Library

**Nancy Z. Lankford**, assistant director, Western Historical Manuscript Collection-Columbia, has been appointed editor of the *Midwest Archives Conference Newsletter*. The Midwest Archives Conference is the largest regional archival conference in the United States.

## School of Library and Informational Science

**Thomas Kochtanek**, assistant professor, published "Impact Analysis of a Bibliographic Instruction Program in an Academic Environment" in *Proceedings of the Mid-Year Conference of the American Society for Information Science* in May.

## College of Engineering

**William R. Kimel**, dean, served as a pre-accreditation site visitor for the new Oklahoma University B.S. program in nuclear engineering April 14-15 in Norman, Okla.

**Neal B.H. Benjamin**, professor of civil engineering, participated in meetings of the American Society of Civil Engineers Construction Division Executive Committee and the Construction Research Council and

chaired a technical session at the ASCE national meeting April 11-19 in Portland, Ore.

**Paul W. Braisted**, chairman of mechanical and aerospace engineering, participated in the Minnesota section of the ASME as vice president of Region VII April 25-26 in Minneapolis, Minn.

**Robert G. Combs**, professor of electrical engineering, participated in a National Science Foundation review panel for instructional scientific equipment program proposals April 9-12 in Phoenix, Ariz.

**Marc deChazal**, professor of chemical engineering, presented a paper titled "Coal Conversion Technology Applicable to Missouri" at the American Institute of Chemical Engineers symposium April 15 in St. Louis.

**Richard T. Douty**, professor of civil engineering, chaired a session on "Use of Computers in Engineering Education" at the American Society of Civil Engineers conference April 16-17 in Portland, Ore.

**Jay Goldman**, chairman and professor of industrial engineering, participated in a Council of Industrial Engineers meeting April 15-18 in Chicago.

**Jimmie Hinze**, assistant professor of civil engineering, presented a paper titled "Human Aspects of Construction Safety" at the American Society of Civil Engineers convention April 18 in Portland, Ore.

**Aaron Krawitz**, associate professor of mechanical and aerospace engineering, served on the Steering Committee for the International Conference on Science for Hard Materials which met April 6 in Providence, R.I.

**John Love**, professor of mechanical and aerospace engineering, participated in a committee meeting of the American Society of Testing and Materials April 17-15 in Milwaukee.

**Richard H. Luecke**, professor of chemical engineering, chaired a session and presented a paper titled "Computer Models for Prediction of Drug Interaction" at the American Institute of Chemical Engineers meeting April 15 in St. Louis.

**William McFarland**, assistant professor of electrical engineering, was a participant in the Digital Image Analysis and Pattern Recognition Program Definition Workshop March 25-28 at Texas A & M University in College Station, Tx.

**John T. O'Connor**, chairman of civil engineering, presented a paper titled "History and Chemistry of Trihalomethane Formation" at a meeting of the American Water Works Association Polination Seminar March 26 in the UMC Memorial Union.

O'Connor presented a paper titled "Alternate Methods for Disinfection" at the Missouri Section of the American Water Works Association April 10 at Lodge of the Four Seasons. He spoke on "Neutron Activation Analysis for Organo-Halides" at the International Conference on Nuclear Methods in Environmental and Energy Research April 14 at the Columbia Ramada Inn.

**John R. Salmons**, professor of civil engineering, chaired the Industry Research Committee and served on the Bearing Wall Committee of the Prestressed Concrete Institute at meetings April 14-16 in Chicago.

**James R. Tudor**, professor of electrical engineering, co-chaired a session of the American Power Conference April 20-23 in Chicago.

**Rex A. Waid**, professor of electrical engineering, participated in meetings of the University/College Minority Engineering Program Directors and the National Society of Black Engineers March 26-31 in San Francisco.

**Charles E. Dunlap, Jr.**, associate professor of chemical engineering, presented a paper titled "Evaluation of Cellulose Sources of Substrates in Bio-Chemical Processes" at the American Institute of Chemical Engineers symposium April 15 in St. Louis.

**Walter Meyer**, chairman of nuclear waste engineering, co-chaired a session titled "Nuclear Waste Management" of the American Power Conference April 21-23 in Chicago.

**John T. Novak**, professor of civil engineering, presented a seminar titled "Chemical Sludge Dewatering and the Effect of Polymers" at the University of Texas April 17-19 in Austin, Tex.

**Victor Stefanovic**, professor of electrical engineering, chaired a session on "Motor Control" at the Institute of

Electrical and Electronic Engineers/Industry Electronics and Control Instrumentation Society Conference March 17-21 in Philadelphia.

**Stefanovic** was co-author of a paper titled "Microprocessor Controller for a Thyristor Converter with an Improved Power Factor" presented at the conference.

**Richard G. Hoft**, professor of electrical engineering, has accepted a \$4,930 grant from the Otis Elevator Co. to develop a 400 HZ auxiliary inverter.

**William McFarland**, associate professor of electrical engineering and the bioengineering/advanced automation program, has received a \$170,000 grant from NASA to study the development of remote sensing expertise.

McFarland is the recipient of a \$10,000 grant from the USDA Soil Conservation Service to study watersheds in north central Missouri.

**Owen Miller**, professor of industrial engineering, has received a \$10,625 grant from the United States Dept. of Commerce for Missouri business and industry development.

## Department of English

**John W. McRoberts**, assistant professor, is the recipient of a Southern Foundation Study-Research Fellowship. During the 1980-81 academic year, Roberts will conduct research at Indiana University on American Black Ballads.

**Larry Lewis**, associate professor, has been granted a year's leave-of-absence to accept a visiting professorship at the University of Iowa's internationally-known Writers Workshop.

## Department of Geology

**W.D. Keller**, professor emeritus, presented an invited paper on "The Sedimentology of Flint Clay." at the industrial minerals section of the regional meeting of the Geological Society of America, Bloomington, Ind. He also took part in a field trip to survey the problem of terra rossa soils.

**Raymond Ethington**, professor, **John Sharp Jr.**, associate professor, and **George Viele**, professor, will staff the UM Branson Field Laboratory this summer. Sharp will serve as director.

## Department of Germanic and Slavic Studies

**Dennis Mueller**, associate professor, read a paper on "Diversity in the Humor of Contemporary German Literature," at the Eighth Annual Conference on Twentieth Century Literature at the University of Louisville in February.

**Naomi Ritter**, assistant professor, read a paper on "Apollinaire and Rilke: The Saltimbanque as Saviour" at an Apollinaire Colloquium at the University of California in Santa Barbara in March. Ritter served as discussant on the panel, "Autobiographische Prosa" at the Washington University Symposium on Contemporary West German Literature later in the month.

## Department of History

**Russell Zguta**, professor, has published "Early Russian Medicine: Potential Sources and Directions of Research" in the April, 1980 issue of the *Journal of the History of Medicine and Allied Sciences*.

**Robert J. Rowland Jr.**, professor, has been appointed executive secretary of the Vergilian Society of America.

## College of Home Economics

**Anna Cathryn Yost**, associate professor, published "The Rehabilitation Home Economist" in the Spring 1980 *Journal of Home Economics*.

**Pat Lurance**, associate professor, chaired a session on "Sharing Program Approaches" at the Extension Committee on Organization and Policy workshop held recently in Nashville, Tennessee.

**Mary McDonald**, assistant professor, served as program chairperson for the Missouri Dietetic Association annual meeting in St. Louis.

**Donna Jeffery**, assistant professor, spoke on "Nutrition Needs of Athletes: New Concerns" at the Missouri Dietetic Association meeting.

**Loretta Hoover**, associate professor, spoke on "Cost Containment in Dietary Departments" at the St. Louis



**Rochelle Howen**, head resident, Wolpers Hall, received her master's in Counseling and Personnel Services in May.



**Harriet Johnson**, clinic manager, Student Health Service, has 15 years' experience with UMC.



**Lorraine Duffen**, cashier, Jesse Hall, has 10 years experience with UMC.



**Jane Dennis**, travel advance cashier, Jesse Hall, marks 10 years with the University.



**Laverne Shelley**, administrative associate, home economics, has spent the last 10 years with the University.



**Betty Baysinger**, administrative associate II, College of Public and Community service, has worked the last 10 years for UMC.



**Paul Leutzenhiser**, police officer, marks 20 years with the University.



**Tony Lampe**, officer, grants and contracts, marks 15 years with the University.



**Reginald 'Pat' Patrick**, police officer, has worked 20 years for UMC.



**Mariann Coleman**, secretary, grants and contracts, has worked 10 years for UMC.

meeting. Hoover also has been appointed to the Technical Advisory Panel for a Dietetic Manpower Demand Study of the American Dietetic Association, in addition, she presented a paper on Data Base Comparisons at the 5th National Nutrient Data Bank Conference, held at Michigan State University recently.

**Richard Dowdy**, associate professor, and graduate student Jill Burt, presented a paper "Effect of Long-term Intensive Training and Copper and Iron Nutrition in Man" at the American Institute of Nutrition in April.

**Joe Logan**, instructor, has written three books recently released by Milliken Communications Corporation. The books are: "Architectural Drawing I," "Architectural Drawing II," and "Solar Energy: Passive Systems." Logan has also been appointed to the Commercial, Industrial and Institutional Builder Operations Committee of the National Association of Home Building.

**Phyllis Pirner**, assistant professor, presented a workshop "Public Policies — Impact on Families" for the Midwest Association for the Education of Young Children in Milwaukee, Wisconsin.

**Dean Bea Litherland** has been appointed to the Joint Committee on Education for the government service of USDA and the National Association of State Universities and Land Grant Colleges. Litherland also participated in the American Council on Education/American Association on Universities National forum held in Washington, D.C. on May 21-22.

**School of Medicine**

**Karl D. Nolph**, professor of medicine and director of the division of nephrology and **Barbara Prowant**, head nurse of the Missouri Continuous Ambulatory Peritoneal Dialysis Program, were invited to visit medical centers in Japan which are starting dialysis programs. Nolph also delivered a lecture in Tokyo at a meeting of Japanese nephrologists.

On his return from Japan, Nolph was the invited lecturer at the 20th Anniversary Celebration of the University of Washington Chronic Hemodialysis Program at Seattle, the first such program in the world.

**Department of Political Science**

**Paul Wallace**, associate professor, briefed government officials on developments in India during an April 7 conference in Washington, D.C. organized by the State Department. In January Wallace went to India to observe the presidential election at the request of the State Department.

**Department of Psychiatry**

**G. Derwood Carnes**, associate professor, has received an award of \$7,026 from the World

Rehabilitation Fund, New York, to conduct a project in Europe this summer.

Carnes will travel to Sweden and England to study the evolution of rehabilitation consumer organizations and their representation in governmental agencies and societal institutions which impact on the lives of handicapped individuals.

**Department of Recreation and Park Administration**

**Hardeep Bhullar**, chairman, will receive \$12,000 from the Alumni Development Fund Board for his proposal of an Outdoor-Environmental Educator Demonstration Center for the Physically Handicapped.

**School of Nursing**

**Gladys Courtney**, dean, will receive \$8,000 from the Alumni Development Fund Board for her proposal for support of the Planning Phase of an Educational Nursing Model.

**Department of Statistics**

**John Hewitt**, professor, chaired a session on applied probability at a meeting of the Institute of Mathematical Statistics in Charleston, South Carolina, March 12-14, 1980.

**Richard Dykstra**, associate professor, also chaired a session at the same IMS meeting.

**Ashis Sen Gupta**, visiting assistant professor of statistics, presented a paper entitled "Generalized Correlations in the Singular Case" at the Midwest Regional meeting of the Institute of Mathematical Statistics held in Iowa City April 28-30, 1980.

**John Klein**, graduate student, presented an invited talk titled "Accelerated Life Testing and 'Safe Dose' Estimation Under Competing Cause of Failure" at the same meeting.

**Mel Moeschberger**, associate professor, presented an invited paper titled "Some Recent Developments in Competing Risk Theory" at the same meeting.

Also, **A.P. Basu**, chairman, presented an invited paper titled "Identifiability Problems in the Theory of Competing & Complementary Risks" at the same meeting.

**College of Veterinary Medicine**

**M.J. Bojrab**, professor, presented "Soft Tissue Surgery" for the University of Pennsylvania's Continuing Education Program in Philadelphia, April 29-May 1.

**M.E. Tumbleson**, associate professor, presented "Ethanol Consumption of Gilts Farrowed by Alcoholic and Control Miniature Swine," co-authored with J. Dexter, at the 11th Annual NCA/AMSA/RSA Medical-Scientific Conference of the National Alcoholism

Forum in Seattle May 1-7.

**W.F. Braun**, resident, published "A Perspective for Veterinarians," in the *Dairy Goat Journal*, (May, 1980); 3, 66-68, 85.

**A.W. Confer**, research associate, **H.K. Addinger**, professor and **G.M. Buening**, associate professor, published "Cell-Mediated Immunity in Marek's Disease: Correlation of Disease-Related Variables with Immune Responses in Age-Resistant Chickens," *Am J Vet Res*, 41, 3:313-318.

**A.W. Confer**, research associate, and **H.K. Addinger**, professor published "Cell-Mediated Immunity in Marek's Disease: Cytotoxic Responses in Resistant and Susceptible Chickens and Relation to Disease," *Am J Vet Res*, 41, 3:307-312.

**D.C. Blenden**, professor and **D.H. Mueller**, resident, published "The Status of Rabies and Rabies Research Today," *Purebred Dogs*, 97, 4:72-74.

**Kenneth Weide**, dean, will receive a \$4,024 grant from the Alumni Development Fund Board to fund his proposal for instructional improvement in parasitology.

**G.M. Buening**, associate professor, presented "Immune Responses of Cattle to Chemically Modified Anaplasma Antigen," at a meeting of the Anaplasmosis Research Workers at Morrilton, Ark., April 10.

**W.H. Fales**, assistant professor, **R.H. Lentsch**, staff, and **B.K. Kirchner**, staff, attended a meeting of the Missouri branch of the American Society of Microbiology in Kansas City, April 10-12. Fales presented "Antibiotic Therapy with Drug-Resistant Strains of *Bovine Pasteurella* spp." Lentsch presented "*Actinobacillus lignieresii* and *equuli* Pathogenesis in Laboratory Rodents," and Kirchner presented "Occurrence and Pathogenesis of Three Serotypes of Salmonella in Laboratory Mice."

**P. Roubesh**, assistant professor, presented "Small Animal Laboratory Medicine," to the Ozark Veterinary Academy in Springfield April 12.

**J.M. MacDonald**, assistant professor, presented "Feline Dermatology" and Feline Dermatoses" to the Salt Lake City VMA, Salt Lake City Utah, April 15.

**A.B. Kier**, assistant professor, **G.D. Osweiler**, professor and **J.D. Rhoades**, associate professor, attended a meeting of the Southeast Missouri VMA in Poplar Bluff, April 15-16. Kier presented "Feline Vaccination Review" and "Feline Cytauxzoonosis Update." Osweiler presented "Mycotoxins Update and Review" and Rhoades presented "Highlights of the 1980 Heartworm Symposium."

**B.A. Gilroy**, assistant professor, published "Balanced Anesthesia Using Methoxyflurane and Gallamine," in *JAAHA*, 16, 2:215-218.

**W.R. Renegar**, **S.T. Simpson**, associate professor, and **S.G. Stoll**, associate professor, published "The Use of Methylmethacrylate Bone Cement in Cervical Spinal

Stabilization: A Case Report and Discussion," in *JAAHA*, 16, 2:219-224.

**W.R. Renegar** and **S.G. Stoll**, associate professor, published "Gunshot Wounds Involving the Canine Carpus: Surgical Management," *JAAHA*, 16, 2:233-240.

**M.E. Tumbleson**, associate professor, presented "Protein Malnutrition and Plasma Ethanol Clearance Rates in Adult Sinclair (S-1) Miniature Swine," and chaired a session at the 1980 Federation of American Societies of Experimental Biology meeting in Anaheim, Calif. April 13-18.

**A.A. Case**, professor, presented "Toxicosis and Off-Flavor in Milk," and "Pregnancy Toxemia," at the Sheep and Goat Symposium April 19, Ames, Iowa.

**B. Buntain**, resident, presented "Bovine Respiratory Diseases" at the Veterinary Technicians Conference April 19 in St. Louis.

**L.D. Kinter**, professor, presented "Defense Mechanism of the Gut" at the 1980 Convention of the American Association of Swine Practitioners, April 20-22 in Minneapolis, Minn.

**C.J. Bierschwal**, professor, presented "How to Handle Difficult Deliveries of Calves" at the Super Cow Clinic, April 21 at Green Forest, Ark. and "First Aid for Calving Difficulties" at a meeting of the Camdenton Cattle Association, April 23, Lebanon.

**B.D. Jones**, assistant professor, presented four papers at the annual meeting of the American Animal Hospital Association in Los Angeles, Calif. April 19-27.

The papers were: "Chronic Active Hepatitis — A New Disease," "The Use of Gastrointestinal Endoscopy in Veterinary Medicine," "The Use of Laparoscopy in Veterinary Medicine and Gastroenterology I and II — A Course in Gastroenterology." At the concurrent meeting of the Comparative Gastroenterology Society, Jones presented: "The Interpretation of Clinical X-Ray and Laboratory Findings in Dogs with Chronic Diarrhea," "Treatment of Chronic Diarrhea in Dogs," "Meeting the Practitioner's Needs: The Case Workup in a Referral Setting," and "Colonoscopy Versus Open Biopsy in the Referral Setting."

**A.A. Bickford**, professor, presented "Gangrenous Dermatitis and Other Skin Problems in Chickens," at the combined meetings of the Western Poultry Disease Conference and the Asociacion Nacional do Especialistas en Ciencias Avicolas in Acapulco, Mexico.

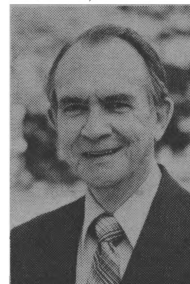
**William Hewitt**, assistant professor and **Esther Brown**, professor, will study the interaction of two commonly used industrial chemicals under a \$238,168 grant from the U.S. Department of Health, Education and Welfare. They will study the interaction of the haloalkane and ketone chemical families to determine if the combination could cause organ damage to individual simultaneously exposed to the chemicals.



**Bob Coats**, research technician, biological science, has 20 years' experience with UMC.



**George Brooks**, director, student financial aids, has spent the last 15 years with the University.



**Lester Powell**, assistant manager of payroll and student aid accounts, has worked 10 years for UMC.



**Carol Bruce**, administrative associate II, education fiscal office, marks 15 years with the University.

# UMC, UMca staff receive promotions

The following persons have received promotions recently: From UMC: Patricia Becker, from personnel interviewer to personnel associate; Elaine Bretscher, from graduate nurse to staff nurse; Jeanette Brehman, from nursing technician to staff nurse; Anita Buss, from graduate nurse to staff nurse; Linda Christianson, from clerk typist to clerk typist II;

Billy Denison, from nursing technician trainee to nursing technician; Kelli Embrey, from nursing technician to staff nurse; Rebecca Flanagan, from graduate nurse to staff nurse; Joan Friedericks, from graduate nurse to staff nurse; Donna Gerfen, from graduate nurse to staff nurse;

Lori Gill, from nursing technician trainee to nursing technician; Alan Gooding, from accounting clerk to senior accounting clerk; Mark Jackson, from registered respiratory therapy technician to supervisor respiratory therapy; J. Lynn Kable, from nursing technician trainee to nursing technician; Brigid Kimutes, from graduate nurse to staff nurse;

Kenneth Kerschel, from senior clerk typist to personnel interviewer; Laurence Logan, from nursing technician trainee to nursing technician; Caroline Mahoney,

from nursing technician trainee to nursing technician; Marjorie Mitchell, from graduate nurse to staff nurse;

Priscilla Ross, from graduate nurse to staff nurse; Luann Sitton, from graduate nurse to staff nurse; Harold Stearley, from nursing technician trainee to nursing technician;

Nora Strom, from graduate practical nurse to licensed practical nurse; Melinda Thill, from graduate nurse to staff nurse; Diane Thomas, from food service worker I to food service worker II; Kathleen Youse, from graduate nurse to staff nurse;

From UMca: Nellie Buckner, from food service worker II to bindery operator; David Card, from drafting technician to senior drafting technician; Diana Cox, from chief clerk to personnel associate; Sandra Crowson, from senior research laboratory technician to research specialist; Lily Ferrell, from administrative assistant to accountant;

Darrell Hale, from animal technician to animal technician II; Michael Hall, from animal technician to animal technician II; Bobby Jenkins, from assistant director grants and contracts to associate director sponsored programs services; Rudy Koch, from manager research restricted accounting to director sponsored programs;

David McQuire, from supervisor research restricted accounting to

associate director sponsored programs finance; Vicki Spate, from senior research laboratory technician to research specialist; Nancy White, from

fiscal assistant to accountant; Deborah Wright, from senior clerk typist to data entry operator II.

## Learning vacation at UMC during July

The Alumni College at UMC offers an appealing vacation destination for Missourians trying to beat the rising cost of gasoline. Set for the week of July 13-19, the Alumni College provides a learning vacation including non-credit courses, tours of campus facilities, physical activities and fun for UMC alumni and friends.

"The goal of Missouri's Alumni College is to have each program varied enough to be mind stretching, organized enough to avoid boredom and relaxed enough to be enjoyable," says Charlene Nickolaus, program chairman and an instructor of Extension Education at UMC.

Fees cover costs of the courses, planned programs, housing in an air-conditioned dormitory and most meals.

Total costs range between \$180 and \$210 depending on room accommodations and alumni association membership. Registration deadline is July 1.

For further information, persons should contact: Charlene Nickolaus, Program Chairman, 344 Hearnese.

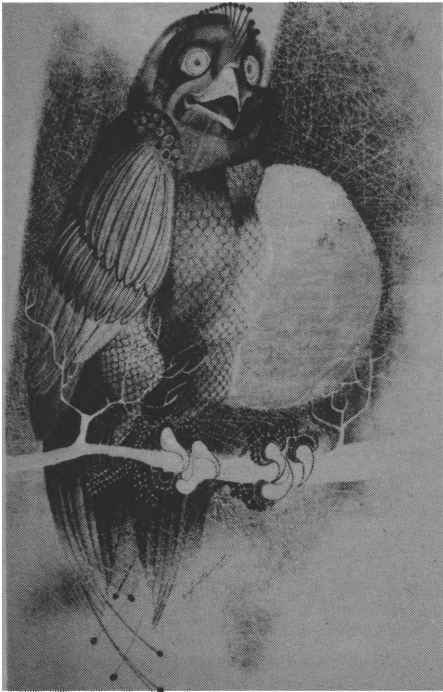
## Table Tennis Club boasts four winners

The UMC Table Tennis Club came back from the state tournament in St. Louis with four trophies last week.

Winners were: Daniel Dunay, former student, first place in Class "B" Singles; Judy Todd, secretary, Medical Center and Dan Todd, electronics technician, Academic Support Center, second place in Mixed Doubles; and Jim Simon, graduate student, second place in Class A Doubles.

# This week

Mark Kempf



Watercolor owl by Siegfried Reinhardt, on permanent exhibit at the UMC Museum of Art and Archaeology.

All events are free unless otherwise noted.

## 6 June

**MOSSPAC Chamber Orchestra:** Guitarist Manuel Barrueco, soloist, 8:15 p.m., Fine Arts Recital Hall. \$4.50 for general admission, \$3 for students and senior citizens. Tickets will be sold at the door.

## 7 June

No events scheduled.

## 8 June

**Fine Arts Recital:** Chamber Ensemble, 4 p.m., Fine Arts Recital Hall.

## Women's Center groups forming for summer

The UMC Women's Center will sponsor a variety of seminars, discussion groups and skills development groups during summer school. Programs will be held in 1 Gentry Hall unless otherwise specified; they are filled on a first come, first served basis. Most groups require intake interviews which are scheduled the week before programs begin.

Registration for workshops and groups may be made at the Women's Center or by calling 882-6621.

The schedule:

**Assertion Training for Women:** Wednesdays, 4-5:30 p.m., begins June 18 (6

## 9 June

No events scheduled.

## 10 June

**University Film:** "The Last Wave," 8 p.m., Ellis Aud.

**Women's Center Seminar:** Women's Music on the Lawn, Sara Wollery, local feminist artist, noon, in front of the Women's Center.

## 11 June

No events scheduled.

## 12 June

**University Film:** "Cria," 8 p.m., Ellis Aud.

**MOSSPAC Chamber Orchestra:** Violinist Joseph Swensen, soloist, 8:15 p.m., Fine Arts Recital Hall. \$4.50 for general admission, \$3 for students and senior citizens. Tickets will be sold at the door.

## 13 June

**MOSSPAC Chamber Orchestra:** Violinist Joseph Swensen, soloist, 8:15 p.m., Fine Arts Recital Hall. \$4.50 for general admission, \$3 for students and senior citizens. Tickets will be sold at the door.

## 14-15 June

No events scheduled.

## 16 June

**Women's Studies Lecture:** "The Incompatibility of Sexism and Racism in

Education," Wilma Scott Heide, founder of NOW, 12:30 p.m., 119 General Classroom Building.

## 17 June

**Women's Studies Lecture:** "Anthropology: The Study of Woman (which includes Man)," Wilma Scott Heide, founder of NOW, 12:30 p.m., 119 General Classroom Building.

**Health Care Lecture:** "The Rise and Fall of American Medicine," Barbara Ehrenreich, critic of the American health care system, 7:30 p.m., Art and Archaeology Auditorium.

**Horticultural Therapy Workshop:** "Show-Me How To," the Annual Conference of the Great Plains Chapter of the National Council for Therapy and Rehabilitation Through Horticulture. For more information, call Judy Wells, department of horticulture, 882-2745.

**University Film:** "Woman of Paris" and "Sunnyside," 8 p.m., Ellis Aud.

## 18 June

**Women's Studies Lecture:** "The Ungodliness of Religion," Wilma Scott Heide, founder of NOW, 12:30 p.m., 119 General Classroom Building.

**Women's Center Seminar:** "For Her Own Good: A Book Review on Women's Health Care by Barbara Ehrenreich, author of "For Her Own Good" and "Witches, Midwives and Nurses," 7 p.m., 1 Gentry Hall.

**Horticultural Therapy Workshop:** "Show-Me How To," the Annual Conference of the Great Plains Chapter of the National Council for Therapy and Rehabilitation Through Horticulture. For more information, call Judy Wells, department of horticulture, 882-2745.

## 19 June

**MOSSPAC Chamber Orchestra:** Hugo Vianello, conductor, 8:15 p.m., Fine Arts

Recital Hall. \$4.50 for general admission, \$3 for students and senior citizens. Tickets will be sold at the door.

**Women's Studies Lecture:** "The Seemlessness of Scholarship and Action — More Future Search and Less Research," Wilma Scott Heide, founder of NOW, 12:30 p.m., 119 General Classroom Building.

**University Film:** "A Woman's Decision," 8 p.m., Ellis Aud.

## 20 June

**Women's Studies Seminar:** "Feminism as Futurism and Prophecy," Wilma Scott Heide, founder of NOW, 12:30 p.m., 119 General Classroom Building.

**MOSSPAC Chamber Orchestra:** Hugo Vianello, conductor, 8:15 p.m., Fine Arts Recital Hall. \$4.50 for general admission, \$3 for students and senior citizens. Tickets will be sold at the door.

## 21 June

**MOSSPAC Chamber orchestra:** Frank Bellino, conductor, 8:15 p.m., Fine Arts Recital Hall. \$4.50 for general admission, \$3 for students and senior citizens. Tickets will be sold at the door.

## Exhibits

**Stanley Hall:** Housing Conservation Show, May 3-June 27. Gallery hours 8 a.m.-noon and 1-5 p.m., Mon.-Fri.

**Museum of Art and Archaeology:** "Light Abstractions . . . A Photographic Exhibition," May 18-June 22. Gallery hours are noon to 5 p.m., closed Monday.

**Laws Observatory:** "Public telescope observing on Friday nights," weather permitting. Located on the roof of the Physics Building, public may view the stars on clear Friday nights from June 13-August 1, between 9-11 p.m.

**Ellis Library:** Publications from the faculty of the department of entomology are on display through May in the main lobby. The library is open from 7:30 a.m. to 11 p.m. Monday through Friday, 8 a.m. to 11 p.m. Saturday and 2 to 11 p.m. Sunday.

Mizzou Monthly  
Office of Internal Communication  
University Relations Division  
329 Jesse Hall  
University of Missouri-Columbia  
Columbia, Mo. 65211

NON PROFIT ORG.  
U.S. POSTAGE  
PAID  
COLUMBIA, MO.  
PERMIT NO. 31

University Libraries  
University of Missouri

## Digitization Information Page

Local identifier                      MizzouMonthly-Vol01

### Source information

Format                                      Book  
Content type                                Text with images  
Source ID                                    gift copy not added to collection.  
Notes                                         Pages 12 of issue no.9 was trimmed on top margin, causing page number and running title "Mizzou weekly" partially missing.

### Capture information

Date captured                                February 2023  
Scanner manufacturer                      Plustek OpticBook  
Scanner model                                A300 Plus  
Scanning system software                 Book Pavilion  
Optical resolution                            600 dpi  
Color settings                                8 bit grayscale  
File types                                      tiff  
Notes

### Derivatives - Access copy

Compression                                Tiff: LZW compression  
Editing software                             Adobe Photoshop 2022  
Resolution                                    600 dpi  
Color    grayscale  
File types                                      tiff  
Notes    Images cropped, straightened, brightened.