

MIZZOU

W E E K L Y

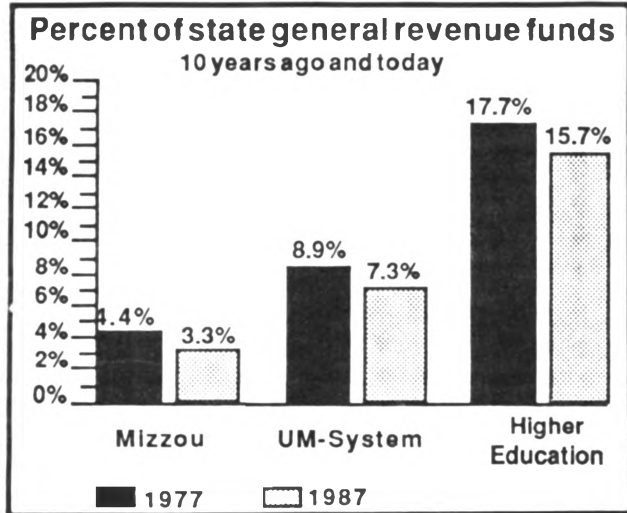
University of Missouri / Columbia / November 3, 1987

ON THE INSIDE:

Page 2 The three R's are changing to 'riting, rethinking and revising in Mizzou's writing intensive courses.

Page 3 What's this PPO thing all about? Experts answered employees' questions at information sessions.

Page 7 Put down your paintbrush and add your entry to the Black Culture Center's student/faculty art show, to be held Nov. 11 through 13.



Reviewing the total budget

Nov. 5 budget hearing offers chance to hear latest on state funding request.

The University's state funding request for 1988-89 soon will cross the desks of Missouri legislators. Faculty and staff are invited to a budget hearing at 10 a.m. Nov. 5 in N201-202

Memorial Union to hear the status of the request and to add their input.

Campus budget officers and Chancellor Haskell Monroe met with six state legislators Oct. 8 at the Alumni Center to discuss the budget request. Similar meetings were held at the other campuses.

The Nov. 5 budget meeting will provide an overview of the total budget. Among the items in the budget request are inflationary requests, including an 8 percent salary hike for faculty and staff, a 20 percent increase for library acquisitions and a 3.6 percent increase for expense and equipment.

The Coordinating Board for Higher Education reviews the University's request and sends its budget recommendation to the governor. In the past four years, the governor has withheld \$14.4 million from the budget appropriated by the Legislature. The percent of state general revenue funds appropriated to Mizzou declined in the past 10 years from 4.4 percent to 3.3 percent. In that same period, the state's contribution to the University system dropped from 8.9 percent to 7.3 percent of the state's general revenue funds. The state's contribution to higher education in the past 10 years fell from 17.7 percent to 15.7 percent of its general revenue funds.

For 1988-89, the coordinating board has recommended a 13.9 percent increase in state funding for recurring appropriations in the University system's general operating budget, including cooperative extension. In addition, the board recommended one-time funding for engineering equipment, basic life sciences equipment, endowment funds and the operation of other programs. The board recommended funding 40 percent of the system's \$2 million capital appropriations request. On the Columbia campus, the board's recommendation includes funds for engineering lab and classroom phase II, Ellis Library phase II planning funds, veterinary medicine addition, engineering complex renovation and planning funds for the agriculture research addition.

Of 1986-87 Mizzou current fund revenues, 33.6 percent came from the state, 11.9 percent from tuition and fees, 22.7 percent from the University Hospital and Clinics, 10.8 percent from other sources such as endowment and investment income, 8.1 percent from federal support, 9 percent from auxiliary enterprises and 3.9 percent in private support.

More than half of Mizzou's general operating funds, \$81.1 million, support undergraduate education. Master's and professional programs — law, medicine and veterinary medicine — receive about 20 percent each. Some 8.2 percent is spent on doctoral education.

A substantial portion of the budget, 45.1 percent, is associated with health sciences, which encompasses the schools of Nursing, Medicine and Health Related Professions; University Physicians; and University Hospital and Clinics. The College of Arts and Science receives 13.9 percent of the budget. The College of Agriculture receives 11 percent.



Larry Boehm photo

Through the Educational Assistance Program, Brigitte Anthony is completing a master's degree.

Taking advantage of reduced fees

Educational program helps employees get back to the books for pleasure or to realize goals.

Brigitte Anthony worked her way through the ranks. Starting in 1983 as a clerk typist in Continuing Medical Education, today she is senior secretary in the department. But her career advances are far from over.

Only 15 credit hours and a stint of student teaching stand between Anthony and a master's in business education. That's a goal she'll be able to reach thanks to the

University's Educational Assistance Program. Anthony, who has a bachelor's degree in business administration from Northeast Missouri State University in Kirksville, says without the financial help she wouldn't be in school. She hopes her master's degree will enable her to find a job teaching high-school practical arts and business courses.

Here's how the Educational Assistance Program works. After an employee com-

pletes a six-month probationary period, the University will pay 75 percent of an employee's fees for up to six hours of University classes during fall and winter semesters and three hours during summer sessions. Employees must meet regular admission standards to enroll in classes. If an employee has to take time away from work to attend class, he or she can arrange ways to make up the time, including using vacation time.

Anthony doesn't take lunches and works late to meet her job responsibilities. "Everyone has been very encouraging in this office," she says. "I guess they saw some potential."

Not everyone who uses the benefit is working toward a degree, says Blake Danuser, manager of Human Resource and Development. "The program is an opportunity to learn and to do it at a reduced cost," he says. "For some it's a matter of learning for learning's sake." In 1985-86, 840 Mizzou employees enrolled in classes through the program.

To take advantage of the fee-reduction program, remember to complete all paperwork first: Fill out an application to enroll in the Director of Admissions Office, 130 Jesse Hall. Pick up and complete a program form at Human Resource Development, 114 Heinkel Building. Employees who are enrolled in classes this semester may go through preregistration Nov. 5 through 20. Regular registration is Jan. 11 and 12.

Another option for employees is the easy access program. The one-day option on the first day of classes allows registration for undergraduate classes on a space-available basis. This year easy access is Jan. 13. You will not have to fill out an application to enroll at the Admissions Office. Easy access forms are available at registration and in some departments.

REVIEWING EXCHANGE PROGRAM

President Emeritus C. Brice Ratchford, chairman of the UM South African educational program committee, will review the University's exchange agreement with the University of the Western Cape in Capetown, South Africa, from 1:40 to 3:30 p.m. Nov. 3 in S203 Memorial Union. He will explain procedures for submitting proposals to participate in the exchange program.

A delegation from UWC and Mizzou faculty who have visited there will be present to answer questions about the program.

HOSPITAL X-RAYS GHOULISH TREATS

Ghosts and goblins gathered at Columbia Mall Oct. 30, where the University Hospital and Clinics set up an X-ray machine to view the loot collected by the tiny ghouls. The X-ray found special tokens that entitled the bearer to a prize.

This is the second year the hospital has joined in the Halloween festivities. Other activities included costume contests, games and a haunted house. "We want to promote a safe alternative to trick-or-treating," says Joann Wait, senior information specialist at the hospital.

MAKE SOME PUMPKIN TREATS

Jack-o'-lanterns are lots of fun, but not too tasty. Now that Halloween is over, try using pumpkin in recipes. University Extension specialists give some ideas in the October "Harvest to Health" brochure.

PUMPKIN PANCAKES:

- 1/2 cup regular, uncooked oats
- 1 cup buttermilk
- 2 eggs
- 1 tablespoon vegetable oil
- 1/2 cup pureed pumpkin
- 1/3 cup low-fat or skim milk
- 1 teaspoon baking powder
- 1/2 teaspoon baking soda
- 1/4 teaspoon cinnamon
- 1/4 cup whole wheat flour

- 1/3 cup all-purpose flour
- 2 tablespoons wheat germ
- 1 tablespoon sugar

Combine oats and buttermilk and let stand for 15 minutes to soften. Mix eggs, oil, pumpkin and milk and blend well. Combine all dry ingredients and mix with the egg mixture. Add oats and buttermilk and blend until batter is fairly smooth. Add extra milk if batter is too thick. Bake on lightly greased griddle. Makes four servings.



FORUM

Enhancing writing and reasoning skills

By Doug Hunt

University faculty members in departments ranging from agronomy to sociology will begin in winter semester 1988 to offer a set of specially designated courses designed to improve the reasoning and writing skills of students. The Campus Writing Board, a

cross-disciplinary faculty committee, has designated these courses "writing intensive" after examining their syllabi and assignments. Writing intensive classes typically place less emphasis than others on lectures and objective tests. Instead, students demonstrate their mastery of the subject matter by writing essays, memos, case studies, or research papers.

The crucial distinction between writing intensive and non-writing intensive courses is the role of revision. The model writing intensive course is one in which students write a series of relatively short papers, with each paper critiqued at the draft stage before

final submission. The most important learning in the course may occur while students rethink and rewrite their drafts.

Students enrolled in writing intensive courses benefit from a smaller student/teacher ratio that makes it possible for professors and teaching assistants to comment on drafts and confer with students about their papers. Their transcripts will show a "W" beside the course name in the same way that honors courses show a "GH." The University's transcript guide will contain an explanation of the abbreviation. The Campus Writing Board believes that employers and graduate programs will be favorably

impressed by transcripts that show strong performances in "W" classes.

Students who matriculated after June 1987 are required to complete English 20, the new freshman English course, plus at least one writing intensive course. Many of the courses listed as writing intensive for winter semester 1988 are for upperclassmen and are being listed with the special "W" designation largely to "break the system in." Most freshmen who complete English 20 in 1987-88 will take a writing intensive course in 1988-89 or 1989-90.

Hunt is director of the Campus Writing Program.

Dig a little deeper

There's still time to make donations as Mizzou's 1987 United Way campaign draws to a close.

Time is running out for you to make your United Way pledge. The campaign officially closed Oct. 30, but the campaign office will still take your pledge if you get it in

immediately. By Oct. 28, Mizzou had raised \$109,000 toward its \$174,161 goal. "We're a little ahead in terms of where we were this time last year," says Kee Groshong, director of Business Services and chairman of this year's campaign. "We have every indication that we will meet, and possibly exceed, our goal."

Groshong is counting on regions that got a late start to have a strong finish. "We encourage everyone to continue the excellent start we've made to bring the campaign to a close. We're an integral part of the Columbia campaign," Groshong says.

Mizzou traditionally has raised 20 percent of the funds pledged to the Columbia area United Way and has always reached its goal. "It's a good cause," Groshong says. "There are so many worthy organizations that need help. The United Way supports

many of them, so your dollars can benefit a wide spectrum of community service organizations. For me, it's the best choice."

The 27 local agencies supported by the United Way provide human and social services to the community, many of which may benefit some Mizzou employees. "Many times we think these services are only for the transient or the unemployed. But as a group, there are a variety of services offered by the United Way that Mizzou employees may need to use at some point," Groshong says.

Groshong encourages people who haven't returned their pledge cards to do so, whether entering a pledge or not. "We want to make sure everyone has been contacted and has had the opportunity to pledge if they want to. By keeping track of the cards, we are able to determine if any areas have been overlooked."

COUPON GOOD FOR

NO POINTS

ON 1st MORTGAGES

- * 2-Year Adjustable Rate
- * Up To 95% Financing
- * Payments By Payroll Deduction

**WHERE?
AT YOUR CREDIT UNION**



874-1477

First & Broadway
(Enter on Walnut)

7:30-5:30 M-F Closed 9-10 a.m. Tuesday

COUPON EXPIRES NOV. 30, 1987



Five Holiday Workshops

Make your holidays more fun, inexpensive and personal

Stained Glass Ornaments/Sun Catchers
(2 evening sessions)

Wooden Cutting Boards
(2 afternoon or evening sessions)

Ceramic Serving Plates/Platters
(2 afternoon or evening sessions)

Tie Dye Fabric/T-Shirts
(2 evening sessions)

Holiday Bow Making
(1 evening session)

Classes begin the week of Nov. 9
Call 882-2889 for more information.



Sponsored by the MSA Craft Studio and the University "Y"

JAZZ LEGENDS TO SHARE STAGE

Trumpeter Freddie Hubbard and vibraphonist Bobby Hutcherson will perform at 8 p.m. Nov. 22 in Jesse Auditorium. The two starred in "Round Midnight," which was nominated for an Academy Award. Michael Cuscuna, who collaborated on the music for the film with Herbie Hancock, will host the performance. Cuscuna is label manager for Blue Note Records.

Appearing with the duo will be pianist Larry Willis, tenor saxophonist Ralph Moore, bassist Mike Frominac and drummer Carl Allen.

The performance is sponsored by the Music Department and the Concert Series, among others.

Tickets are on sale now, with reserved seating available only through the mail. Tickets are \$12 each or \$10 for parties of 10 or more. Send checks, made payable to the University of Missouri, to "Legends of Jazz," 140 Fine Arts Building, to the attention of Marjorie Reid.

Faculty and staff may receive tickets through Campus Mail. Others should enclose a stamped, self-addressed envelope. Requests will be processed as they are received. Tickets also are available at Murry's, 3107 Green Meadows Way, and Streetside Records, 222 E. Broadway.

POULTRY CLUB HAS GOBBLERS TO SELL

The Poultry Science Club can help you with plans to gobble down fresh turkey this Thanksgiving. The club sells fresh dressed turkeys annually. This year's sale, which will run through Nov. 6, features turkeys at 75 cents a pound. The club hopes to beat last year's record of 400 gobblers sold. To order call 884-1022, 442-6049 or 884-1015. Turkeys may be picked up from 2 to 7 p.m. Nov. 24 at the Livestock Center.

FRESH DRESSED TURKEYS FOR SALE



PROGRAM HONORS RETIRING GEHRKE

To honor Charles W. Gehrke upon his retirement from the University, a program is planned for Nov. 20 in Memorial Union. Gehrke, professor of biochemistry, also managed the experiment station and chemical labs and directed the chromatography spectrometry facility.

The program will include a scientific poster session and a symposium on "Frontiers in Analytical Chemistry." A reception will begin at 5:30 p.m., followed by a dinner.

Cost of the reception and dinner is \$13. For reservations call 882-8795 by Nov. 11.

Explaining PPO program

Employees pose range of questions at recent meetings.

Questions and concerns about the University's new preferred provider organization were voiced at 11 campus information meetings last week. The PPO option became available Nov. 1.

At Mizzou, the preferred provider is the University Hospital and Clinics and the University Physicians. But as a member of the Healthlink network, employees can see 2,000 doctors in 30 hospitals throughout the state who are affiliated with the network. A listing of affiliated doctors and hospitals is included in the PPO information booklet mailed last week to employees.

Some 200 employees attended an afternoon session Oct. 27 in Memorial Union Auditorium. Questions and answers at that session included:

Q. Do I have to enroll in the PPO?

A. No. All employees enrolled in the University's medical plan automatically will be eligible for PPO benefits. You don't have to use a PPO physician or hospital, but you can take advantage of discounted rates by using the PPO network.

Q. What PPO benefits do people in the \$100 deductible get that those in the \$500 deductible do not?

A. Because employees enrolled in the \$100 deductible pay higher monthly premiums than those in the \$500 deductible, they are offered incentives to use the PPO, such as waiver of the deductible and first day room and board. (See Sept. 22 Mizzou Weekly for a complete list of incentives.) Those in the \$500 deductible will only receive the discounted rates offered through the PPO. Of employees enrolled in the University's medical plan, 88 percent are in the \$100 deductible.

Employees who want to move from the \$500 deductible to the \$100 deductible to take advantage of the PPO incentives may do so without evidence of good health during the Nov. 2 through 13 enrollment change period. This is a one-time-only offer.

Q. Is there a limit on services provided in the routine physical examinations?

A. Routine outpatient physical exams will be included for all employees in the \$100 deductible and dependents who are 4 years old and older. Each examination will cost the employee \$25, with a cap of \$150 on services to be paid from the medical plan. If the examination exceeds \$175, the employee will pay any amount over. For example, if an exam comes to \$178, the employee will pay \$28. There is a limit of one exam per year.

Routine outpatient physical examinations will be included for eligible depend-

ents under the age of 4. Each examination will cost the employee \$10. There is a limit of three per year per child.

Q. Is a second opinion required?

A. A second opinion is suggested for procedures listed on Page 16 of the PPO information booklet. It will be covered 100 percent if the doctor performing the service is in the health-care network. If an unaffiliated doctor offers the second opinion, the cost will be covered under the basic medical plan.

Q. How will I file claims?

A. The PPO physician and hospital will file all claims for PPO services. Sometimes, you may be asked to sign a claim or to provide additional information. New claim forms will be available Nov. 1 at UM Employee Benefits, 114 Heinkel Building. The revised forms will include a new mailing address. They will be mailed to Provident Life & Accident Co. in care of Healthlink. Healthlink will certify the claim and then deliver it to Provident. Processing of claims will take a little longer, but long delays are not anticipated.

Q. Will the discounted rates offered through the PPO be within the "reasonable and customary limits" set by the University's insurance company?

A. If you use a preferred provider, the negotiated fee will be within the reasonable and customary limit.

Q. How were the preferred providers selected? And why wasn't Boone Hospital Center or Columbia Regional Hospital invited to join the network?

A. The PPO doesn't preclude offering another alternative at some point and time if it becomes advisable for the University to do so. But, the University Hospital and Clinics was selected partly because Healthlink already was working on affiliating the hospital with the network.

"Of course, we want to increase the utilization of our own facilities," said Mary Ann Tipton, manager of UM Employee Benefits. "It's important for you to remember that you do not have to use the preferred provider. You can still go to any hospital or doctor and use your existing University medical benefits."

Q. Can I make an appointment to see a specific doctor at the University Hospital or do I just have to take whomever is available?

A. You can make an appointment. If, however, your doctor is in a subspecialty, such as neurosurgery, he or she is always on call for emergencies. If an emergency arises, you may have to see another doctor or reschedule your appointment.

Q. If the PPO increases use of the University Hospital, will the hospital be able to provide efficient service? I've waited at least 45 minutes for an appointment each time I go there.

A. "Having people wait for appointments is not one of our goals. We are very aggressive in trying to manage that and constantly monitor waiting times in an effort to reduce them," said Pat Hart, assistant divisional director of Financial Services at the hospital. Hart said the hospital's new clinics at Green

Meadows and Crossroads West shopping centers offer alternatives for employees.

"We have plenty of capacity at our new clinics," she said. "We have tripled the number of examination rooms there."

Frank Mitchell, professor of surgery at University Hospital and chairman of University Physicians, says the physicians are not anticipating any problems meeting an increase in business due to the PPO and are excited about the health-care option. "We think we give outstanding medical care. But a teaching hospital can look formidable to a patient," he says.

Mitchell says the hospital's new parking garage and expanded services at Green Meadows and Crossroads West are designed to ease access to the clinics. "We expanded the clinics in anticipation of the PPO and to increase our emphasis on ambulatory care."

Pensions honored

The stock market doldrums of recent weeks squeezed the University's retirement fund, but the crash did not affect the University's ability to honor pension payments or its ability to accrue retirement benefits for current employees.

As of Aug. 31, stocks make up 69 percent or \$388 million of the \$563 million retirement fund. The fund more than tripled in the past five years, enabling it to absorb losses sustained during the Oct. 19 stock market crash.

"Even with the loss, the trust is strong enough to enable us to continue to meet our commitments," says Jim McGill, UM vice president for Administrative Affairs. "The University does not base pension payments on market performance." Monthly retirement benefits are figured on a retiree's length of employment and salary average from the last five years of service.

==> Let's Compute!_

Have you been wondering how to use a mainframe application you've never tried before?

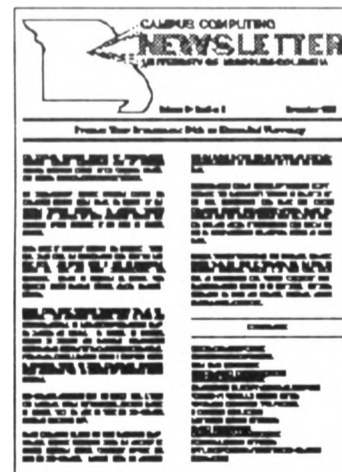
Would you like to use a familiar microcomputer program in a different way?

Try looking in the **Campus Computing Newsletter** for the answers and instructions you need.

The **Campus Computing Newsletter** provides essential and timely information about mainframe and microcomputer applications and usage on the Columbia campus.

If you would like to receive the Newsletter, contact Computing Services in 100 Lefevre Hall, 882-2112, and leave your name and address.

Whether you're a new microcomputer user or a veteran mainframe user, the Newsletter has information that can help you make your computing easier.



Winterize Yourself!



The Staff for Life will be providing free flu immunizations to all Faculty and Staff

Thursday, November 12
10 AM - 2 PM
Jesse Hall

Business Office Conference Room, 303

The immunization is especially recommended for persons over 65, or with chronic heart and lung or kidney problems. Individuals allergic to eggs should not receive the immunization.

UNIVERSITY OF MISSOURI-COLUMBIA HOSPITAL & CLINICS

The Staff for Life

For more information, call
882-4161



Meeting Mizzou

Chancellor Haskell Monroe adds his welcome during the Oct. 23 filming of Mizzou's new employee orientation video. The video will be featured in employee orientation sessions beginning sometime this winter. It includes testimonials from current employees on why they came to Mizzou and what they like about the campus, emphasizing the student aspect of working on a university campus. "We have a unique and diverse workforce and that comes through in the video," says Blake Danuser, manager of Human Resource Development. "Every person is important, and we all come together to get our work done."

EMPLOYMENT

Recorded listings of new campus and UM job openings are available 24 hours a day. For professional vacancies call 882-2345; for secretarial/clerical positions call 882-2041; and for technical/service/maintenance openings call 882-2916.

Recorded listings of University Hospital and Clinics vacancies also are available 24 hours a day. For administrative/professional/technical openings call 882-1856; for nursing vacancies call 882-1857; and for secretarial/clerical/service/maintenance positions call 882-9088.

Anyone with UMCVMB CMS computer access may view campus and UM vacancies by logging on and entering command jobs. IBM 5520 users may view vacancies by asking their system administrator for the name of the current vacancy list document.

For more information or to apply for a job, contact Personnel Services, 201 S. Seventh St., west entrance, at 882-7976. For information on job openings at University Hospital and Clinics, contact the hospital Personnel Department, 1W42 UMCHC, telephone 882-8186.

Q&A

Q. We are all watching with anticipation as the old parking lot east of the Arts and Science Building becomes a park. Could you publish a plan for this space? Surely the University will include ample walkways to dissect this space so we don't repeat the Francis Quadrangle problem, and could we hope for benches and trees?

A. There is a preliminary plan for the space, including landscaping, benches, and, yes, even walkways. The area has been seeded. "However, more detailed plans and funding need to be developed before anything is done in that area," says Phil Shocklee, assistant director of communications in Campus Facilities.

Q. How often during the day and night are the parking garages patrolled by University Police? What means of security do the garages have? Are there telephones linked up to police headquarters such as the emergency phones on campus? If not, will there be in the future? And, what is going on with the Paquin Street exit from the University garage? I thought it was to be paved and ready to be used in early October.

A. Jim Joy, director of Parking and Transportation Services, says eight emergency phones currently are being installed in both of the parking structures. The phones will be directly linked to the University Police Department. "As far as other means of security, there is the lighting and chain barriers. The fact that Campus Facilities has a maintenance office in the structures also offers security." Joy says student cadets patrol the garages during the day and uniformed police officers check the structures during every shift.

Phil Shocklee, assistant director of communications in Campus Facilities, says the Paquin Street exit will be paved. "Scheduling problems and weather delays have postponed this work, which now should be completed in a couple of weeks."

Send your questions about campus matters to Mizzou Weekly, 1100 University Place. You must include your name and phone number so we can reach you, if necessary. All questions remain anonymous. Mizzou Weekly will not answer unsigned questions.

UNIVERSITY BOOKSTORE

AVERY FF3 SELF-ADHESIVE File Folder Labels for \$3.70/pack



Multi-purpose, removable labels Mounted on 4" x 6" sheets.

The University Bookstore has a large selection of Avery self-adhesive labels in a variety of colors.

PARKING AND TRANSPORTATION SERVICES

107 SWALLOW
882-4568

We are proud to welcome Maria Studley and Wanaca Johnson to our staff. Maria was previously employed part time in this office and Wanaca comes to us from Student Financial Aid where she has been employed for nine years.

Staff Recognition Week 1988 Staff Advisory Council Requests Your Ideas and Help

What activities/programs would you like to have?

What times are best for your attendance?

Yes, I would like to help.

Name _____ Campus telephone _____

Return this form to: Larry Windmoeller, 1E05 UMCHC

FRIENDS MAKE THE DIFFERENCE!

THANK YOU!

KBIA SURPASSED ITS GOAL DURING FRIENDSHIP FESTIVAL '87.

In five days, KBIA met the \$61,000 fundraiser goal and ended the on-air appeal 24 hours earlier than planned.

Friends of KBIA continued to call-in and mail-in their pledges of support ... exceeding \$70,000 during the final day of the fund drive ... and making this KBIA's most successful Friendship Festival ever.

As pledges continue to arrive in the mail, it appears that KBIA may have earned the largest amount of pledges for its market size in the nation.

The success of Friendship Festival '87 lies primarily with the financial support contributed for National Public Radio and local news programming, classical music, "A Prairie Home Companion," and "Hearts of Space"/new age music.

YOU MADE IT HAPPEN. THANK YOU FOR YOUR SUPPORT OF KBIA AND PUBLIC RADIO.



CLASSIFIEDS

FOR SALE

5-ACRE WOODS/MEADOW TRACTS: Gentle southern slope, underground utilities, private lane off state road 8 mi. west of campus. \$13,000-18,000, 10% down. No trailers. 449-5620 12-5 p.m. Mon.-Sat.

IBM 'GENERIC' COMPUTER and Sony color monitor, less than 60 hours' use, 2 floppy drives, 640K RAM, plus word processing and games software. Lists for \$1,450, sell for \$990. 449-8777.

FOR RENT

HOUSE IN THE SOUTHWEST AREA: Close to the Country Club. 3 bedrooms, attached garage, full basement, fenced back yard. \$475/mo. Contact Alex Waigandt at 874-4130.

WANTED TO BUY

USED DRESS FORM, size 8 preferred. Call Susan Burns, (816) 882-6182 after 5 p.m.

SERVICES

GOING AWAY? Weekend? Vacation? Family emergency? Experienced animal owner will provide loving care for your pets in your home. Excellent references. 657-9633.

The Classified Advertising Section is open only to faculty and staff members.

A home phone number is required in all classified ads.

Ads must be typed.

Rates: 30-word maximum \$3.

Publication deadlines:

Nov. 6 for Nov. 17

Nov. 13 for Nov. 24

Mizzou Weekly Classifieds: Make your check payable to University of Missouri and send to: Mizzou Weekly, 1100 University Place, Attention: Sherrill.

EXHIBITS

WESTERN HISTORICAL MANUSCRIPT COLLECTION: "Clothing and Dress" will be on display through Dec. 7 in 23 Ellis Library. Hours are 8 a.m.-4:45 p.m. weekdays.

STATE HISTORICAL SOCIETY: A variety of works from its major collections will be displayed through December. Hours are 8:30 a.m.-4 p.m. weekdays. Photographs by Andrew Tau, Edward Clifton Collings and Dan Hoagland will be displayed through December in the society's corridor. Hours are 8 a.m.-4:30 p.m. weekdays and 9 a.m.-4:30 p.m. Saturdays.

MUSEUM OF ART AND ARCHAEOLOGY: "Egyptian Art under the Greeks and Romans: 382 B.C.-A.D. 330" will be on display through Nov. 15. The centerpiece of the show is a 2,300-year-old mummy in an elaborate coffin on loan from Washington University in St. Louis. "Buddist Art from the Permanent Collection" is on display as well. Hours are 8 a.m.-5 p.m. Tuesday through Friday and noon-5 p.m. weekends.

BRADY COMMONS GALLERY: Ceramics and sculpture by Rob Larson will be on display through Nov. 5. Hours are 10 a.m.-5 p.m. weekdays and 3-5 p.m. Sundays.

FINE ARTS GALLERY: The graduate student exhibition will be on display through Nov. 13. Hours are 9 a.m.-3 p.m. weekdays and 2-4 p.m. Sundays.

MISSOURI CULTURAL HERITAGE CENTER: "Making Do, Ozark Ingenuity in Tool Making" will be on display through Nov. 13 in the gallery, located on the second floor of the Conley House, Sanford Street and Conley Avenue. Hours are 8 a.m.-5 p.m. weekdays.



Need Multiple Copies at Night or on Weekends?

Grants, manuscripts and proposals are not always written between 9 and 5. If you are working on projects in the evening or on weekends and "quick copy" is closed come to

Ellis Library Copy Service

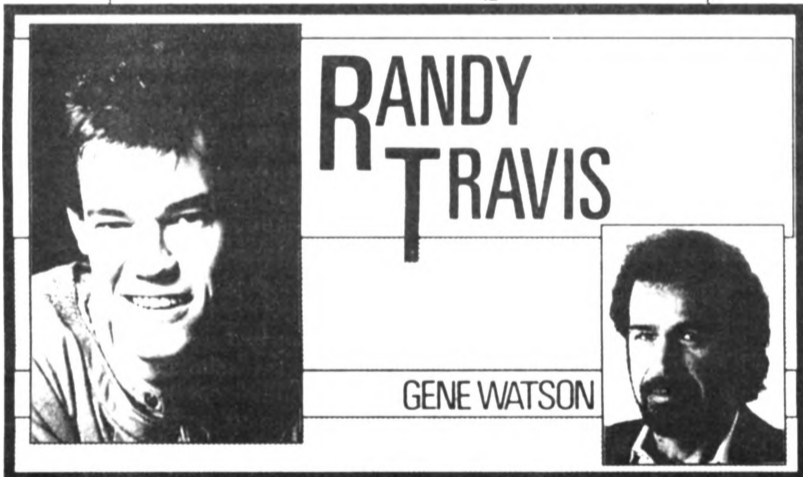
On the second floor of the main library

We can run multiple copies, collate, and staple for you, all for only 5¢ a copy.

And, of course, we can also reduce, enlarge, make 11x17 copies and colored paper copies.

Hours: M-FRI 8-11 PM We accept department IDOs, checks or cash.
SAT 9-9 PM
SUN Noon-Midnight

Appearing at the Hearnese Center
Saturday, November 14th at 8 p.m.



Ticket Prices
\$14 Public ☆ \$13.50 Faculty & Staff
\$13 UMC Students
Ticket Outlets:
Hearnese Ticket Office-eastside
Shopper's Aid-Sears Wing-Columbia Mall
Streetside Records-222 E. Broadway, Columbia
Sears-Capital Mall, Jefferson City
Hickman's Foods, Mexico, Mo.
Hearnese Ticket Office Hours:
Mon. 8 a.m.-6:30 p.m. ☆ Tues.-Fri. 8 a.m.-5 p.m.
Saturday 9 a.m. - 2 p.m. ☆ Closed Sunday
To Order By Phone:
(314) 882-2056
MasterCard or VISA

University of Missouri-Columbia
Hearnese Center



Jeff Adams photo

A Halloween theme to jinx the Nebraska Cornhuskers won first place for the Payroll Office in Intercollegiate Athletics' office decoration contest. From left, front row, are Janice Koch, Mary Lou Cason, Shirley Penn and Connie Colley. Back row: Debble Krienke, Juanita Bishop and Eva Moore. Student Financial Aid and Institutional Research and Planning tied for second place.

Committee denies reserved parking

The daily hike through parking lots SG7A and SG7B became too much for a group of Mid-Missouri Mental Health Center employees. The group's petition for reserved parking spaces was among the agenda items at the parking and transportation committee's Oct. 26 meeting.

In the petition, the employees asked that a section of parking lots SG7A and SG7B surrounding Faurot Field be reserved for staff parking. Staff assigned to that lot share it with students who also have parking permits for the area.

Group members said that since the return of students to campus, they have been unable to find parking spots close to the tunnel under Stadium Boulevard, which they use to walk to work.

Committee members empathized with the staff members' dilemma, but denied the

request in consideration of students who park in the lot late at night and must walk to residence halls.

Ex-officio committee member Tommy Carter, assistant director of Operations and Planning at University Hospital and chairman of the Health Science Center parking committee, told the group that staff who work evening shifts at the hospital are allowed to park in the hospital parking garage.

A request to waive the monthly \$10.50 parking fee for an official vehicle also was denied. This summer J.R. Brown, professor of agronomy, wrote the committee asking for an explanation of the charge. All official vehicles must have a parking permit to park on campus. Brown objected to the limited areas designated for official vehicle parking and having to pay parking fees out of his research operating funds.

"Costs for operating a vehicle can be included in grant requests," said Mary Kaye Doyle, the Graduate Professional Council representative to the committee. Doyle moved to deny the request "based on setting a precedent for others."

LETTERS

Figure exaggerates cost of educational benefit

Editor:

RE: your report that Staff Advisory Council has recommended the extending of the reduced fees for instruction to the families of employees. (See Oct. 20 Mizzou Weekly.)

The proposal has considerable merit but must be compared to the cost. Mizzou Weekly notes that "in 1985-86, 1,816 employees used the educational assistance program at a cost to the University of \$307,142." That number grossly overestimates the "cost" to the University. The assumption made in the estimate is that the employee would have attended and would have paid full fees if the program were not in existence. Such is almost assuredly not the case.

I think I could defend the opposite view: that every nickel of tuition paid by the employees was pure profit to the University, since the additional cost of their attending the University is very close to zero. (In my own case, the cost is probably less than a dollar for five hours credit, since each student must get handouts.)

So, at worst, the "cost" figures are much less than is shown. The effect on the University is understated in the case of employees who take courses which are even indirectly related to their assignment. In this case, the University receives the services of a better-qualified employee.

To the extent that the University can increase enrollment by offering discounts to employees and their dependents, the University is increasing its bottom line. Stating that the amount of the discount is "cost" is misleading. If my enrollment goes up from 1,000 to 1,010 as a result of the program, I promise that I will not complain about being overworked as a result of the educational benefits given to dependents of employees.

Walter L. Johnson
Associate professor of economics

**HAPPY
NEW
YEAR**



**BE PREPARED
FOR 1988**

**ORDER YOUR
CALENDARS
AND REFILLS**

NOW

Success

\$2.22

16-month
**CALENDAR
PAD** No. 481A

Limited Supply

REFILLS

- No. 479 3" x 3" .60
- No. 480 3 5/8" x 6" .58
- No. 481 3" x 4" .77

For all your
office, janitorial
and maintenance
supplies ...
Call Us First!

**General
Stores
882-6906**

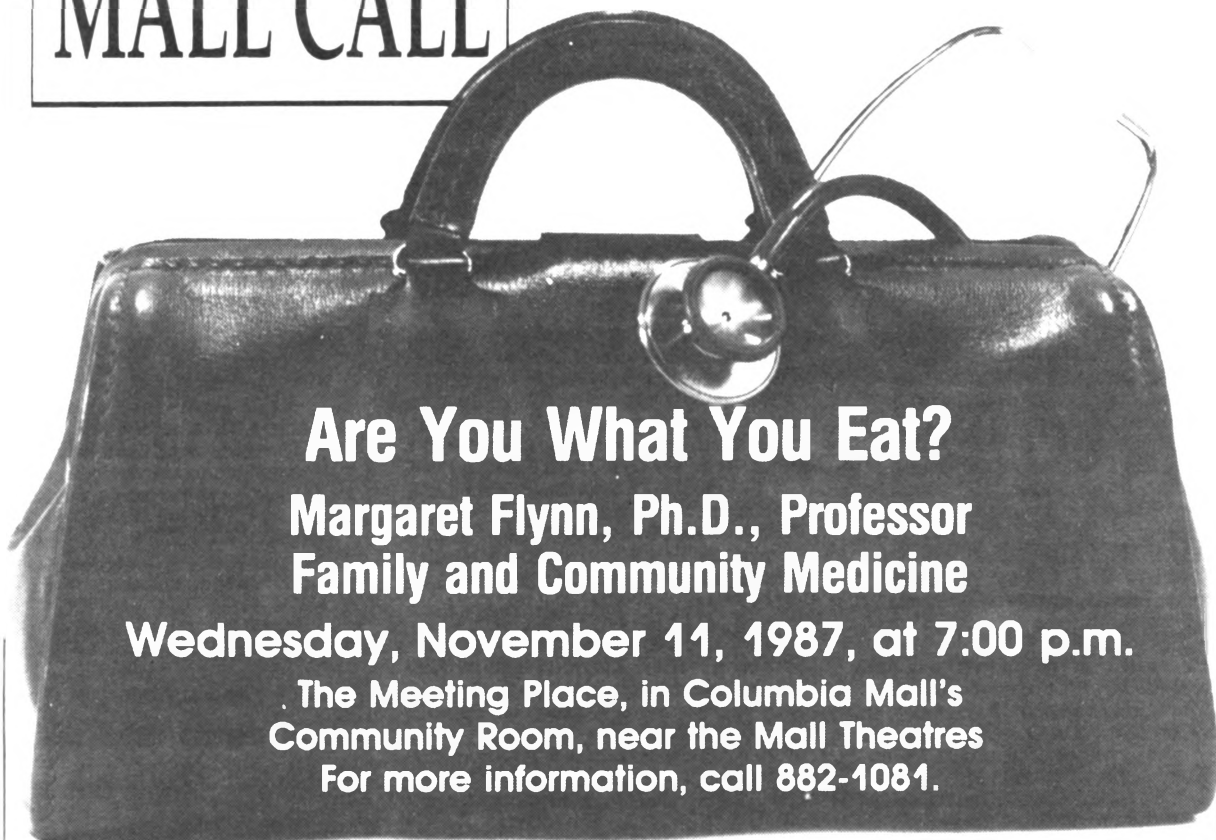
Can-Do-Crew



William "Gene" Robertson, professor of community development, displays his painting that illustrates the black man's loss of dignity and the regaining of that dignity through black power and pride. "Art is part of my life," says Robertson, who will enter this painting, along with photography and other art, in the student/faculty art show to be held from Nov. 11 through 13 at the Black Culture Center, 823 Virginia Ave. To enter artwork, contact Willie Robinson, director of the Black Culture Center, at 882-2664.

Larry Boehm photo

MALL CALL



Are You What You Eat?

**Margaret Flynn, Ph.D., Professor
Family and Community Medicine**

Wednesday, November 11, 1987, at 7:00 p.m.

**The Meeting Place, in Columbia Mall's
Community Room, near the Mall Theatres
For more information, call 882-1081.**

MIZZOU
WEEKLY

Vol. 9

No. 10

A publication of the University of Missouri-Columbia faculty and staff, published every Tuesday during the academic year and twice a month during the summer by Publications and Alumni Communication, a department of Development, University and Alumni Relations Division, 1100 University Place, 882-7357. News deadline is noon Tuesday the week before publication. Annual subscriptions are available to retirees for \$10. Faculty Council and Staff Council communication committee members: Donald Anderson, Gerald Browning, Roger Casadei, Jim Flood, Joye Patterson, Barbara Olson Smith, John Van Hook, Larry Windmoeller and Thomas Wyllie.

Editor: Carol Hunter

Staff Writers: Sue Richardson, Mildred Robertson and Mary Vermillion

Advertising coordinator: Sherrill Harsh

Graphic editor: Larry Boehm

UNIVERSITY OF
MISSOURI-COLUMBIA
HOSPITAL & CLINICS



**Columbia
Mall**
170 & Stadium Blvd
Columbia, MO

The Staff for Life

CALENDAR

Send calendar items in Campus Mail to Scott Wyman, Mizzou Weekly, 1100 University Place, by noon Tuesday the week before publication. Events are free and open to the public unless otherwise noted.

Highlights

LECTURE: Jonathan Kwitny, Pulitzer Prize-winning reporter for the Wall Street Journal, will speak on "Crimes of Patriots" at 8 p.m. Nov. 5 in Gannett Aud.

MICHAEL HAYDN INTERNATIONAL CONFERENCE: The Missouri Sinfonia will give America's first performance of Michael Haydn's "Orchestra Works" at 8 p.m. Nov. 7 at First Baptist Church, 1112 E. Broadway. Cost: \$5.

LECTURE: Shaila R. Aery, state commissioner of higher education, will discuss "The University of Missouri: Where We Stand, Our Problems, Our Successes" at 7:30 p.m. Nov. 9 at the Holiday Inn Executive Center, 2200 I-70 Drive S.W. Cost: \$2.50 for coffee and dessert. For reservations call Kay Roberts at 874-8585 in advance. Sponsored by University Fortnightly Club.

3 Tuesday

TURKEY SALE: The Poultry Science Club will be selling fresh dressed turkeys through Nov. 6. To order call 884-1022, 442-6049 or 884-1015. Cost: 75 cents a pound. Turkeys may be picked up from 2-7 p.m. Nov. 24 at the Livestock Center.

INTRAMURALS: Entries will close today for women's bowling. Play begins Nov. 10. Cost: \$30 per team. To register stop by 106 Rothwell Gymnasium or call 882-2066.

EMPLOYEE DEVELOPMENT SEMINAR: Gary Fox, associate professor of higher and adult education and foundations, will conduct a seminar on "Teambuilding" from 10 a.m.-3 p.m. in the Education and Development Center, 146 Heinkel Bldg. To register call 882-2552.

BLACK CULTURE CENTER: "The Fly," rated R, will be shown at 6 p.m. at the center, 823 Virginia Ave.

4 Wednesday

MISSOURI INSTITUTE FOR EXECUTIVE DEVELOPMENT SEMINAR: James Wall, professor of management, will present "Strategic Planning" from 9 a.m.-4 p.m. at the Alumni Center. Cost: \$98. Call 882-4803.

EMPLOYEE ORIENTATION: Event will be held from 9-11:30 a.m. in the Education and Development Center, 146 Heinkel Bldg.

FACULTY WOMEN'S NETWORK: Kitty Dickerson, chairwoman of the status of women committee, and Provost Lois DeFleur will speak on "Update on University of Missouri-Columbia Women's Salaries and Other Activities of the Status of Women Committee" from noon-1 p.m. in the Gwynn Hall Lounge.

MIDDAY GALLERY TALK: Susan Langdon, visiting professor of art history from the University of Texas-Arlington, will discuss "Earlier Egyptian Material" from 12:25-1 p.m. in I Pickard Hall.

PROVOST: Provost Lois DeFleur will hold open office hours for faculty, staff and students from 3-5 p.m. in 114 Jesse Hall.

WOMEN'S CENTER: "On Our Own," a panel of single parents, will be presented at 7 p.m. at the center, 229 Brady Commons.

BIOLOGICAL SCIENCES SEMINAR: George Archibald of the International Crane Foundation will speak on "Making Room for Cranes in China" at 7:30 p.m. in 106 Lefevre Hall.

MSA FILM: "Butterfield 8," no rating available, will be shown at 8 p.m. in Ellis Aud. Cost: \$1.

5 Thursday

CONFERENCE: The Missouri Institute of Psychiatry will sponsor a conference on "The Mental Health of Victims" from 7 a.m.-4:30 p.m. at the Marriott Pavilion Hotel, 1 Broadway, St. Louis. Cost: \$65. To register call (314) 644-8804.

CERAMIC WORKSHOP: Paul Dresang, art

professor at Southern Illinois University, will hold a ceramics demonstration from 8:40-11:30 a.m. and from 1-3:30 p.m. in A118 Fine Arts Bldg.

EMPLOYEE DEVELOPMENT SEMINAR: Mark Shilstone, instructor in theater, will conduct a seminar on "Communication" from 9 a.m.-4 p.m. in the Education and Development Center, 146 Heinkel Bldg. To register call 882-2552.

WOMEN'S CENTER: "Practical Assertiveness" will be presented at noon at the center, 229 Brady Commons.

MICHAEL HAYDN INTERNATIONAL CONFERENCE: Michael Haydn's "Missa Sancti Leopoldi" will be performed at 1:15 p.m. in Stephens College Chapel. Charles H. Sherman, professor of music; Robert A. Muranyi of the music division, National Szechenyi Library, Budapest; and T. Donley Thomas of Southeast Missouri State University will participate in a session led by Andrew C. Minor from 2:30-4:45 p.m. in the Fine Arts Recital Hall.

ENTOMOLOGY SEMINAR: Walter Mullins of Mobay Co. in Kansas City will discuss "Pesticide Research and Development" at 2:40 p.m. in 2-7 Agriculture Bldg. Call 882-8346.

FACULTY COUNCIL: Group will meet at 3:40 p.m. in S110 Memorial Union.

ART DEPARTMENT: Paul Dresang, art professor and ceramist at Southern Illinois University, will lecture on his work at 7:30 p.m. in A131 Fine Arts Bldg.

MICHAEL HAYDN INTERNATIONAL CONFERENCE: The Esterhazy Quartet will perform Michael Haydn's "Works for String Quartet" at 8 p.m. at First Presbyterian Church, 16 Hitt St. Cost: \$5.

LECTURE: See Highlights.

6 Friday

WORKSHOP: The Science Journalism Center will hold a workshop on developments in physical and biomedical science and editing techniques for science and medicine pages. The seminar will continue through Nov. 7. Call 882-4714.

NURSING: LuAnn Green, a specialist, and Elaine Enger, a consultant with Edwards Critical Care, will present "Advanced Clinical Applications and Controversies of Hemodynamic Monitoring" from 7:30 a.m.-4:30 p.m. at Days Inn University Center, 1900 I-70 Drive S.W. Cost: \$55 in advance, \$65 on-site. Call 882-0216.

NURSING: A panel of gerontological specialists will discuss "Practice of Gerontological Nursing within a Self-Care Framework" from 8:30 a.m.-3:45 p.m. at the University Center at Southeast Missouri State University in Cape Girardeau. Cost: \$95. Call 882-0216.

MISSOURI INSTITUTE FOR EXECUTIVE DEVELOPMENT SEMINAR: Earl Cecil, professor of management, will present "Performance Evaluation" from 9 a.m.-4 p.m. at the Park Place Hotel at Executive Park in Kansas City. Cost: \$98. Call 882-4803.

MICHAEL HAYDN INTERNATIONAL CONFERENCE: Bruce C. MacIntyre of Brooklyn College, City University of New York; Robert N. Freeman of the University of California-Santa Barbara; and Friedrich W. Riedel of Johannes Gutenberg University, Mainz, will participate in a session led by Charles H. Sherman, professor of music, from 9:30-11:45 a.m. in Memorial Union Aud.

MISSOURI INSTITUTE OF PSYCHIATRY: Clarence Sundram, chairman of the New York State Commission on Quality of Care for the Mentally Disabled, will speak on "Strategies to Prevent Patient Abuse in Public Institutions" from 1-3 p.m. in the Kohler Bldg. Aud., St. Louis State Hospital Complex, 5400 Arsenal St., St. Louis.

MICHAEL HAYDN INTERNATIONAL CONFERENCE: The Missouri Arts Quintet will perform Michael Haydn's "Chamber Music for Wind and Mixed Ensembles" at 1:15 p.m. at Missouri United Methodist Church, 204 S. Ninth St.

CERAMIC WORKSHOP: Paul Dresang, art professor at Southern Illinois University, will give a ceramic demonstration from 1:30-3:30 p.m. in A118 Fine Arts Bldg.

INTERNATIONAL COFFEE HOUR: Event will be held from 2-3:30 p.m. in Brady Commons basement. Call Robert J. Burke, 882-8148.

MICHAEL HAYDN INTERNATIONAL CONFERENCE: Cliff Eisen of Talbot College, University of Western Ontario, London; Stephen C. Fisher of the University of Pennsylvania; and Frank E. Kirby of Lake Forest College will participate in a session led by Jan LaRue of New York University from 2:30-4:45 p.m. in Memorial Union Aud.

MSA FILM: "Children of a Lesser God," rated R, will be shown at 7 and 9:30 p.m. in Jesse Aud. Cost: \$2.

MICHAEL HAYDN INTERNATIONAL CONFERENCE: The Jefferson City Symphony Orchestra and Symphony Chorus will perform Michael Haydn's "Divertimento in D Major" and "Missa pro defunctis" at 8 p.m. in the Capitol Rotunda, Jefferson City.

SEE THE STARS: Weather permitting, the Laws Observatory on the roof of the Physics Bldg. will be open from 8-10 p.m.

7 Saturday

MICHAEL HAYDN INTERNATIONAL CONFERENCE: Jens Peter Larsen of Copenhagen University; Laszlo Somfai of Bartok Archives, Budapest; and Sterling E. Murray of West Chester University will participate in a session led by Barry S. Brook of the Graduate Center, City University of New York, from 9:30-11:45 a.m. in Memorial Union Aud.

CONLEY HOUSE: The house will be open for tours from 10 a.m.-2 p.m.

MICHAEL HAYDN INTERNATIONAL CONFERENCE: Michael Haydn's "Works for String Trio" will be performed by Soni Cordarum at 1:15 p.m. in the Fine Arts Recital Hall.

MSA FILM: "Children of a Lesser God," rated R, will be shown at 7 and 9:30 p.m. in Ellis Aud. Cost: \$2.

MICHAEL HAYDN INTERNATIONAL CONFERENCE: See Highlights.

8 Sunday

MUSEUM OF ART AND ARCHAEOLOGY: "The Mummy," starring Boris Karloff, will be shown at 3 p.m. in I Pickard Hall.

MSA FILM: "Jezebel," not rated, will be shown at 8 p.m. in Memorial Union Aud. Cost: 50 cents.

9 Monday

INTRAMURALS: Play begins today for men's table tennis.

ENGINEERING SHORT COURSE: "Pre-Treatment of Industrial Wastewater" will be held through Nov. 10 at the Ramada Inn Southeast, 1-435 and 87th Street, Kansas City. To register call 882-3088.

HEALTH SEMINAR: "Learn to Take Care of Your Family's Health" sessions will be presented today and Nov. 16 and 23 at the Boone County Extension Center located one-fourth mile south of I-70 off the Fayette exit on Route UU. Sessions are available from 9:30-11:30 a.m. or from 7-9 p.m. Cost: \$20. To register send check payable to University Extension to University Extension Center, Courthouse Basement, Fayette, Mo. 65248. Registration deadline is Nov. 4.

WOMEN'S CENTER: A discussion of pornography will begin at noon at the center, 229 Brady Commons.

EMPLOYEE DEVELOPMENT SEMINAR: Nan Erickson, instructor in education, will conduct a seminar on "Time Management" from 1-3 p.m. in the Education and Development Center, 146 Heinkel Bldg. To register call 882-2552.

BIOCHEMISTRY SEMINAR: Karen Bennett, assistant professor of microbiology, will discuss "Studies of Germ-Cell Determination in *Ascaris*" at 3:40 p.m. in 322 Chemistry Bldg.

LECTURE: See Highlights.

STUDENT ENSEMBLE SERIES: The University Singers, conducted by Duncan Couch, will perform at 8 p.m. in Jesse Aud.

MSA FILM: "Gate of Hell," rated R, will be shown at 8 p.m. in Ellis Aud. Cost: \$1.

10 Tuesday

INTRAMURALS: Play begins today for women's bowling.

EMPLOYEE DEVELOPMENT SEMINAR: Richard Hatley, professor of educational administration, will conduct a seminar on "Motivation: Yours, Mine, Ours" from 9 a.m.-4 p.m. in the Education and

Development Center, 146 Heinkel Bldg. To register call 882-2552.

BIOLOGICAL SCIENCES SEMINAR: "Filamentous Phage Assembly: Basic Biology and Exploitation for Biotechnical Goals" will be presented by George Smith, associate professor of biological sciences, at 3:40 p.m. in 115 Tucker Hall.

BLACK CULTURE CENTER: "White Nights" will be shown at 6 p.m. at the center, 823 Virginia Ave.

STAFF FOR LIFE WELLNESS PROGRAM: "Heartsaver," cardiopulmonary resuscitation for adults, will be taught from 6-9 p.m. in 315 Dockery Hall. Cost: \$5. To register call 882-4161.

11 Wednesday

NURSING: Consultants Dorothea Orem of Savannah, Ga., and Sylvia Kappeli of Aaura, Switzerland, will be featured speakers at the sixth annual "Self-Care Deficit Theory of Nursing Conference" through Nov. 13 at the Marriott Pavilion Hotel, 1 Broadway, St. Louis. Call 882-0216.

MISSOURI INSTITUTE FOR EXECUTIVE DEVELOPMENT SEMINAR: Bob Meyer, training coordinator for the St. Louis Juvenile Courts, will present "Managing Change" from 9 a.m.-4 p.m. at the Alumni Center. Cost: \$98. Call 882-4803.

MIDDAY GALLERY TALK: Marcus Rautman, assistant professor of art history and archaeology, will discuss "The Coptic Collection" from 12:25-1 p.m. in I Pickard Hall.

PSYCHIATRY COLLOQUIUM: Philip Gold of the National Institute of Mental Health in Bethesda, Md., will discuss "Cortico-releasing Hormone Panic Disorder and Chest Pain" at 1 p.m. in Truman Veterans Hospital Aud. Call 882-3176.

EMPLOYEE DEVELOPMENT SEMINAR: Nan Erickson, instructor in education, will conduct a seminar on "Time Management" from 1-3 p.m. in the Education and Development Center, 146 Heinkel Bldg. To register call 882-2552.

PROVOST: Provost Lois DeFleur will hold open office hours for faculty, staff and students from 3-5 p.m. in 114 Jesse Hall.

WOMEN'S CENTER: "Inner Wholeness and Balance" will be presented at 7 p.m. at the center, 229 Brady Commons.

BIOLOGICAL SCIENCES SEMINAR: Felix Breden, assistant professor of biological sciences, will speak on "Effect of Predation on Female Choice and Anti-predator Behavior in the Trinidad Guppy" at 7:30 p.m. in 106 Lefevre Hall.

MSA FILM: "Oliver!" rated G, will be shown at 8 p.m. in Ellis Aud. Cost: \$1.

FOR THE RECORD

FOR SALE: The Medical School dean's office has for sale a Model 306 Automatic Tri-carb Sample Oxidizer for oxidizing all biological samples containing tritium and/or carbon-14, including automatic sample loading and combustion. Contact Jeff Morgan, M413 Medical Sciences Bldg., 882-2246.

MEMORIAL FUND: The College of Arts and Science has established the Martha Magill Advising Fund in memory of Martha Magill Flegal, who died in an automobile accident in Orlando, Fla., in October. She was an academic adviser in the college from 1972 to 1986. Contributions may be sent to the A&S Dean's Office, 210 Jesse Hall.

HEALTH-CARE CARDS: Employees who are enrolled in the University's medical plan will receive new medical plan cards this week. The new cards will reflect that the bearer is entitled to preferred provider organization benefits. If you do not receive your card by Nov. 6, call Employee Benefits at 882-2146 on campus or 882-1536 in the University Hospital.

CORRECTION: An Oct. 27 Mizzou Weekly caption stated that students who failed to comply with University regulations requiring students to show proof of measles immunization or a signed waiver by the Oct. 22 deadline would not be allowed to preregister for winter 1988 classes. Ginny Booker, assistant to the vice chancellor for Student, Personnel and Auxiliary Services, says students who turned in immunization records or have signed the waiver since the cutoff will be allowed to preregister, but may encounter delays because they may not be able to register during their scheduled times.

University Libraries
University of Missouri

Digitization Information Page

Local identifier MizzouWeekly(print)

Source information

Format Newspaper
Content type Text with images
Source ID Duplicate copies University Archives weeded out
Notes

Capture information

Date captured July-December, 2022
Scanner manufacturer Plustek OpticBook
Scanner model A300 Plus
Scanning system software Book Pavilion
Optical resolution 600 dpi
Color settings 8 bit grayscale for majority of pages;
 24 bit color for color illustrations/portraits/photographs
File types tiff
Notes

Derivatives - Access copy

Compression Tiff: LZW compression
Editing software Adobe Photoshop 2022
Resolution 600 dpi
Color same as captured
File types pdf created from tiffs
Notes Images cropped, straightened, and brightened.