

MIZZOU

W E E K L Y

University of Missouri / Columbia / April 5, 1988

ON THE INSIDE:

Page 2 Finalists in vice provost for minority affairs search visit campus.

Page 3 Wellness doesn't end at push-ups and jumping jacks. The School of Health Related Professions sponsors its annual wellness seminar.

Page 4 Performers bring song and dance to University Hospital's lobby.

Special week boosts disabled

Access Office plans events to focus on students' skills, not physical disabilities.

Breaking down barriers between disabled and non-disabled people is one goal of Access Awakening Week, April 11 through 16. The event, sponsored by the Access Office for Students with Disabilities, will highlight disabled students' abilities and accessibility accomplishments on campus.

"The rest of the year we may focus on a problem or a need," says Carma Messerli, coordinator of the Access Office. "You can't respond favorably to that without seeing where those improvements would lead." One in 10 people

in the United States has some type of disability. That number may be higher in Columbia, known for its superior services for the disabled. With a statistic like that, "Everyone has had some contact with a disabled person," Messerli says. But work still must be done to promote understanding. "This week will be a means to ask questions and seek information about disabilities," she says.

The week, planned in conjunction with Equal Opportunity Awareness Week, begins with a discussion on attitudes toward people with disabilities at noon April 11 in the Women's Center, 229 Brady Commons, and a 2 to 4 p.m. session in 234 Brady Commons on independent living. A wheelchair workshop will be held from 1 to 4 p.m. April 12 in S3 Memorial Union. The Office of Equal Opportunity and the Access Office will sponsor a faculty workshop on students with disabilities in the classroom from 2 to 4 p.m. April 13 in 234-235 Brady Commons.

Representatives from the Missouri School for the Deaf, the Bureau of the Blind, Campus Computing and other groups will demonstrate equipment adaptations during the April 14 Access Awakening Day, to be held from 9 a.m. to 4 p.m. in the Brady Commons mall area.

Also on April 14, Alan Toy, actor and president of the

Media Access office in Los Angeles, will speak from 7 to 8:30 p.m. in Memorial Union Auditorium. Media Access provides casting services for disabled actors and script consultations. The Equal Opportunity Recognition Awards ceremony will be held at 3 p.m. April 15 in N201-202 Memorial Union. Max Cleland, Georgia secretary of state and a former head of the Veterans Administration, will speak on "The Quality of Life for Persons with Disabilities."

Celebration, a St. Louis performance group that couples sign language with mime and dance, will perform at 7 p.m. April 15 in Memorial Union Auditorium.

The second annual Wheel-A-Thon will be held from 9 a.m. to 5 p.m. April 16 at Stankowski Field. Money raised will fund the Vaughn Calvin Memorial Scholarship Fund, named in memory of a disabled Mizzou graduate student who died March 3. Contact the Access Office at 882-4696 to enter a team or to make a pledge. Non-disabled people may enter. The Access Office will provide wheelchairs.

"We hope the week's events will appeal to a non-disabled population, as well as the disabled people on campus," Messerli says. "We want it to be educational and entertaining for people who may not ordinarily think of these issues."

PTO scuttled; current plans will not change

The University's vacation, sick leave and personal days policies will not be revised at this time. In a March 23 letter, Ken Hutchinson, UM associate vice president for Human Resource Services, recommended that the paid time off (PTO) and supplemental illness plan (SIP) proposals be dropped. The

letter was sent to Jim McGill, UM vice president for Administrative Affairs.

McGill is chairman of the administrative management council, which had been discussing the proposals to combine vacation, sick leave and personal days. The plans had not gone beyond that council, but were shared with various staff groups with invitations to respond. (See March 8 and March 22 Mizzou Weeklies.)

At Mizzou, Staff Advisory Council staged a March 10 discussion. Employees at that meeting overwhelmingly opposed the measures.

Among employees' concerns was the 15-

day waiting period to qualify for the supplemental illness plan, which would have provided protection for long-term illnesses. In his letter, Hutchinson agreed that the qualifying period was an area that could have been changed.

"The purpose of getting the proposals out was to invite comment," Hutchinson says.

In his letter to McGill, Hutchinson wrote, "While some have indicated their support, an overwhelming majority believe that our current programs are more advantageous. With the level of concern expressed, I cannot recommend the programs be advanced for further consideration."

Just one stop for health care

New clinic offers mid-Missouri women comprehensive care in a convenient, off-campus setting.

University Hospital and Clinics plans to open a one-stop clinic for women this fall. The Women's Health Care Center will be built next to the hospital's family-practice clinic at Green Meadows.

"Women today make 70 percent of the health-care decisions in a family and are far more discerning about health-care choices," says Patsy Dalton, marketing director. She says the comprehensive center will offer much more than the traditional Pap smear and obstetrical care. "Emphasis will be on ways to maintain good health."

Nursing director Karna Kruckenberg agrees. "There are a high number of diseases that have preventable aspects like cardiovascular or lung disease. We intend to focus on preventative measures."

Services at the center will include diagnostic tests for ailments such as breast cancer and osteoporosis, and counseling on fitness, nutrition and stress management. Extended evening hours will be available.

The approximately 4,000-square-foot center will be staffed by a physician and nurse practitioners. Dalton says nurse practitioners can be more accessible than physicians when complaints are minor, but have the expertise to determine when problems are serious enough to see a specialist. "For people who are pretty healthy and just want routine care, the nurse practitioner can be a less-expensive alternative," Dalton says.

The center is another example of Executive Director Bob Smith's plan to expand the hospital's community-based patient care. Dalton says University Hospital and Clinics always has offered primary patient care. The new clinics simply make that care more accessible to patients, she says.

Hospital discounts compared

There are some significant differences in University employee discounts offered by University Hospital and Clinics, and by Boone Hospital Center, says Mike Paden, director of UM Employee Benefits.

Boone Hospital and certain Preferred Care physicians recently ran ads in the Columbia Tribune regarding discounted rates for University-insured employees. In the chart at right, Paden compares the Boone plan to incentives offered through University Healthcare Choice, the University's preferred provider.

Comparison of incentive packages

Incentive	University Healthcare Choice	Boone Hospital/ Preferred Care
Physicians		
Outpatient services discount	10%	10%
General physical exams	One a year for age 4 and over, subject to a \$25 co-pay limited to \$150 in plan expense each year	No coverage
Exams/well checks	Three a year for under age 4, subject to a \$10 co-pay for each visit	No coverage
Second surgical opinions	100% coverage	80% coverage under UM basic plan
Initial \$100 deductible	Waived	Deductible applies
Outpatient co-payment	90%	80%
Hospital		
Initial \$100 deductible	Waived	Waived
First day room-and-board deductible	Waived	Waived
Outpatient discount	10%	10%
Inpatient discount	Yes ★	No
Inpatient co-payment	80%	80%

★ Room and board and services are provided at discounted rates which vary based on type of service.

CONLEY HOUSE OPEN FOR TOURS

Tour historic Conley House from 1 to 4 p.m. April 10, from 10 a.m. to 3 p.m. April 23, and from 1 to 4 p.m. April 24. The Columbia landmark is at Conley Avenue and Sanford Street.

Missouri Cultural Heritage Center docents will tell visitors about the history of the area and explain the home's unique architecture, heritage and restoration.

The tour is free. Call 882-6296 for more information.



NAME TAGS SPORT TIGER COLORS

Departments can order self-adhesive black-and-gold Mizzou name tags through University Relations, and Visitor and Guest Relations. The names tags can be purchased using an IDO and cost 5 cents each.

Call 882-6333 for more information.

CAREER COURSE GIVES DIRECTION

A course designed to help re-entering students develop life and career planning strategies will begin in the fall 1988 semester.

The course will examine issues unique to adults in career planning and should be helpful to staff who take courses through educational assistance and have not decided on a degree program.

The course is offered through the Department of Educational and Counseling Psychology. Call 882-2351 for more information.

Vice provost hunt narrows

Finalists for the position of vice provost for minority affairs and faculty development are interviewing on campus this week. Mitchell Rice, a political science professor from Louisiana State University, and John Ruffin, the dean of arts and science at North Carolina State, were chosen from a field of more than 70 applicants.

The two will meet with deans and directors, along with other administrators, during their visit.

Provost Lois DeFleur says the vice pro-

vost will help develop new minority programs and coordinate those that already exist. "The new vice provost will work both internally and externally to promote minority affairs on campus, working with deans on affirmative action and serving as a liaison with external groups such as high schools and specialized groups such as Inroads."

The provost says faculty development also will be an important part of the newly created position. "The new vice provost also will be responsible for the administration of the faculty leave program, faculty activities and personnel considerations."

DeFleur says the vice provost will probably be selected by late summer and should be able to take office by the fall semester.

LETTERS

Don't obscure facts to quell public's fear

Editor:

It is a pleasure to see this University implement an AIDS education program. However, regarding your March 22 article "Nurse seeks to dispel myths about fatal ailment," I am concerned that University employees and students might not be getting the most objective information concerning transmission of the AIDS virus (HIV).

AIDS educator June Ann Humphrey passes along the same information the Centers for Disease Control has been releasing for the past four years. If one examined the history of the CDC's dealings with AIDS, he or she would find most of its initial hypotheses have been less than accurate. In early 1981 the CDC would not accept that AIDS was even an infectious disease, labeling it Gay Related Immune Deficiency (GRID). When AIDS appeared in several babies in New York, the CDC refused to believe these babies had AIDS ("And the Band Played On," Randy Shilts).

The problem now is not simply AIDS. It is the Human Immunodeficiency Virus (HIV) which causes the syndrome that is the problem. While the CDC has no substantial evidence showing that HIV can be transmitted by casual contact, it also has no evidence

showing it definitely cannot be transmitted this way. Hence, it is a possibility.

It seems to be of great concern to the CDC, and to Humphrey, to dispel panic. While I agree with dispelling panic, I also believe the facts should not get buried in the process. One of Masters and Johnson's points in their recent book is casual contact infection is a possibility — not a certainty. And they are correct in saying so at this time.

Again, I am pleased to see the University respond to this epidemic with an AIDS education program. I hope it is truly an educational experience and not just a "token program" regurgitating the CDC's inaccuracies.

Brian K. Carter
Word processing operator II
Veterinary pathology

Editor's note: Diane Brukart, director of Student Health Service and chairwoman of the campus AIDS task force, responds: "Over the past two years, the AIDS task force, with the present help of AIDS Education Coordinator June Ann Humphrey, has been meeting to discuss the most recent medical information available from all sources to try to provide relevant information on AIDS to the campus community."

"Knowing the controversial information in the press, we have a program this spring to alert people to information by a self-assessment test and by mailing a booklet, "AIDS — A Guide for Survival," to all individuals on campus. We hope people will be able to learn to protect themselves from this serious problem. We anticipate this will be an ongoing educational process as more information becomes available."





\$ SAVE A BUNDLE

on your new car
with
PC CARBOOK

Computerized car pricing

- know suggested retail and dealer invoice
- know the option prices
- nominal fee returned when you finance at

Mizzou Credit Union
First & Broadway (Enter on Walnut)
7:30-5:30 M-F Closed 9-10 a.m. Tueaday




(314) 874-1477
1-800-451-1477

PARKING AND TRANSPORTATION SERVICES

107 SWALLOW
882-4568



The next **parking policy committee** meeting has been scheduled for 8:45 a.m., Thursday, April 7, in S16 Memorial Union. Everyone is welcome.

Input needed as Mizzou's campus plan progresses

Practical parking garages or beautiful grassy malls? Which do you want for Mizzou in the future?

Jack Robinson, independent consultant for the University's capital improvement projects, believes you must have both. And he adds that the process works smoother if students, administrators, faculty and staff have a voice in the decisions.

That's why four public meetings were held March 28 and 29 on the Sesquicentennial plan, Mizzou's blueprint for improvements. Robinson and Osmond Overby, chairman of the campus planning committee and professor of art history and archaeology, fielded questions on such topics as street lighting, new buildings, multi-level garages and pedestrian malls.

"We must provide a balance between the aesthetic and the practical to have a campus

that is truly functional," Robinson told those at the meetings. "Most of the questions we deal with concern parking — and it is a major concern — but there also must be areas that are pleasing to the eye."

The goal is to have both concepts working in harmony, he adds. One example is the plan for a new mall directly south of Jesse Hall. Partially framing that green area will be the new School of Law, the new Reynolds Alumni Center and an accompanying parking garage.

A similar idea is planned for the east campus, which includes veterinary medicine and animal sciences. A green courtyard with walkways and attractive landscaping will lead directly into the area containing those buildings and a new parking structure. There will be another parking structure west of College Avenue.

Robinson gave a slide presentation showing the distinctive, contrasting styles of the campus, and discussed how some improvements have taken years to complete. An example is the Memorial Union, where the tower was completed in 1926 and the south wing was not added until 1962.

"That's why it's difficult to put a timetable on some of these projects," he says. "We've been making improvements to this campus for 60 years."

MONROE ADDRESSES GENERAL FACULTY

Chancellor Haskell Monroe will share his goals and agenda for Mizzou and will update faculty on legislative activities and admission data at the next general faculty meeting at 3:40 p.m. April 18 in N201-202 Memorial Union. That is a change from the previously scheduled time of 4 p.m.

Refreshments will be served prior to the meeting.

VIDEOCONFERENCE TECHNIQUES DEMONSTRATED

Mizzou's Academic Support Center and the National University Teleconference Network will co-sponsor a presentation of "The Production Team Approach to Successful Videoconferencing." The live presentation will be held from 12:30 to 3:30 p.m. April 8 at the Academic Support Center, 505 E. Stewart Road.

Faculty, staff and students interested in videoconference production are invited to attend. Call Joanne Heisler at 882-2854 or Terry Kloepfel at 882-6703 for information.

GOLFERS TEE OFF

Tee off as a member of the faculty-staff golf league. Approximately 22 golf teams play a nine-hole match at the A.L. Gustin Golf Course on Tuesday and Thursday evenings. The season opening tournament will be April 16. Regular play is tentatively scheduled to begin April 28.

All play is handicapped with a maximum handicap of 16 for nine holes. Players at all skill levels are welcome.

Call Carl Leistner at 882-8149 for more information.



GUIDE HELPS MANAGERS

The Employee Assistance Program has developed a new brochure designed to help those who supervise academic employees.

Because faculty have to be free to carry out their teaching and research roles, an academic manager may find it difficult to decide if, when and how to intervene when a faculty member's performance seems inadequate.

To receive a brochure, call Elizabeth Hosokawa, program director of the Employee Assistance Program, at 882-6701.

Hille, dean since 1981, steps down

Stanley J. Hille, dean of business and public administration, has accepted the position of dean of the College of Business and Public Administration at Florida Atlantic University in Boca Raton.

"My years here at the University have been a rewarding experience for myself and my family," says Hille, who has been dean

since 1981. "I believe the faculty and I have made great strides for the college in several important areas."

"Dean Hille has hired excellent faculty and the college has accomplished a great deal under his direction," says Provost Lois DeFleur. "Not only will he receive a sizable salary increase, he will have the opportunity

to develop a brand new college of business."

During Hille's tenure, the college established a \$1.1 million Missouri Banker's Chair to support the study of banking institutions and to prepare students for a changing financial marketplace. Under his direction, fund raising increased from \$40,000 in 1981 to almost \$800,000 in 1988.

Q&A

Q. There are two cars and a van with red official license plates parked in lot RC18. The lot is filled up daily without these vehicles, so why are they allowed on the lot without parking tags?

Also, I was told that people taking computer classes can park in RC18 free of

charge. I and other employees in the Heinkel Building don't believe this is right.

A. Departments that park official cars in lots not 80 percent assigned are not required to buy parking permits for those vehicles. Until Campus Computing moved to the Heinkel Building, RC18 was not 80 percent assigned, says Jim Joy, director of Parking and Transportation Services. With the additional employees assigned to the lot, the departments now will pay to park those official cars in RC18 and will receive parking permits to display on the cars.

Regarding people taking computer

classes in the building, Joy says faculty or staff members taking any staff development class in the Heinkel Building are issued a parking tag good for lot RC20, near the Islamic Center.

Q. Since there are no plans to develop a loading zone in front of Lewis Hall, when are the University police going to start giving tickets to all the University trucks that use the street instead of the loading dock? Unfortunately, the loading dock is adjacent to Clark Hall and there are flights of stairs to Lewis Hall no matter which floor you try to get to in Clark or Lewis.

The real problem comes from people parking to wait to pick up office personnel, and they sure aren't going to go to the loading dock to wait for their riders. It can be a real safety hazard both to pedestrians and auto traffic. As I write this, there are four empty cars parked on the street and a fire training truck parked on the sidewalk.

A. Fifth Street, the roadway in question, is a city street. However, University police have issued tickets to cars parked illegally on that street. Call the University Police Department at 882-7201 with specific complaints.

There's more to wellness than exercise

"The wellness wheel includes physical, spiritual and intellectual spokes. And if one of those is broken, the wheel won't function as well."

That's Rich Oliver's description of the wellness lifestyle. Continuing that healthy philosophy throughout life is the focus of the April 7 and 8 third annual wellness seminar, "Wellness Through the Ages," sponsored by the School of Health Related Professions. Oliver, director of the school, says the event brings outstanding speakers to campus.

This year they include Jim Bakken, a former place kicker in the National Football League who had a stint with the St. Louis Cardinals. The athletic director at St. Louis University will speak at 8 p.m. April 7 in N214-215 Memorial Union. His lecture, "Wellness Throughout the Life Cycle," is sponsored by the Fellowship of Christian Athletes.

Also featured during the two-day event will be George A. Sheehan, a nationally known speaker on exercise and fitness. The 69-year-old has completed 21 Boston Marathons and set several age group records at other distances. Sheehan, a cardiologist, has written five books and has monthly columns in two health publications.

He will present "Lifestyle, Longevity and Peak Performance" at 9 a.m. April 8 in N201-202 Memorial Union. The session will address how nutrition, exercise and attitude are essential to maintain an active, athletic lifestyle as a person ages.

University experts also will present informational sessions. Participants can put all the health talk to practice April 7 during a 4:15 p.m. fun walk/run at the MKT trail, or they can jump into aerobics at Rothwell Gymnasium. For a complete list of events, see the Calendar on Page 12 or call the School of Health Related Professions at 882-8011. On-site registration begins at noon April 7 on the second floor of Memorial Union North. Faculty and staff registration is \$10, compared with \$60 for the public.

The two-day event is part of the campuswide April 4 through 9 Wellness Week, sponsored by Residential Life.

clerical/service/maintenance positions call 882-9088.

Anyone with UMCVMB CMS computer access may view campus and UM vacancies by logging on and entering command jobs. IBM 5520 users may view vacancies by asking their system administrator for the name of the current vacancy list document.

For more information or to apply for a job, contact Personnel Services, 201 S. Seventh St., west entrance, at 882-7976. For information on job openings at University Hospital and Clinics, contact the hospital Personnel Department, 1W42 UMCHC, telephone 882-8186.

The Smoking Clinic

at the University of Missouri offers programs to help people quit smoking. The next clinics will begin on Tuesday, April 19 in Columbia. A clinic will also be held in Jefferson City. Contact the Smoking Clinic and start quitting today - (314) 882-6485.

Sponsored by the Psychology Department—University of Missouri in cooperation with The Missouri Department of Health and The American Lung Association of Eastern Missouri.

University Pharmacies

Providing significant savings for University faculty and staff

University Hospital and Clinics (main lobby) 882-8600

University Physicians at Green Meadows 882-3151

Two locations to better serve you



• THIS WEEK'S SPECIAL •

April 4-April 10

ITEMS ON SALE:

Dimetapp 4 oz. - \$1.50

Vitamin C #14 - \$.30

Advil #60 tablets - \$2.49

UNIVERSITY OF
MISSOURI-COLUMBIA
HOSPITAL & CLINICS

The Staff for Life

University Pharmacy Hours: Mon.-Fri. 8:30 a.m. - 7:30 p.m. Sat.-Sun. 9:00 a.m. - 3:00 p.m.
Green Meadows Pharmacy Hours: Mon.-Fri. 9:00 a.m. - 5:30 p.m. Closed on weekends

EMPLOYMENT

Recorded listings of new campus and UM job openings are available 24 hours a day. For professional vacancies call 882-2345; for secretarial/clerical positions call 882-2041; and for technical/service/maintenance openings call 882-2916.

Recorded listings of University Hospital and Clinics vacancies also are available 24 hours a day. For administrative/professional/technical openings call 882-1856; for nursing vacancies call 882-1857; and for secretarial/



David Hurst will perform scenes from "Pippin" as part of University Hospital and Clinics' Performance Showcase April 6. Hurst will star in the Columbia Entertainment Company production of the musical April 14 through 17 and 21 through 24.

Jeff Adams photo

Performers lobbying for hospital audience

University Hospital and Clinics provides local artists with a showcase for their diverse talents.

David Hurst likes his job as a senior research laboratory technician at the School

of Medicine. But it is not his first love. "I'm an actor by profession and by nature," he says. Hurst gets to lay down his test tube and pick up a thespian mask as researcher becomes performer in the University Hospital's Performance Showcase.

The showcase, part of the hospital's Art for Life program, is a 30-minute musical, dramatic or educational presentation that occurs from noon to 12:30 p.m. every Wednesday in the main hospital lobby.

As many as 50 performers have appeared

in the showcase since it began in September 1986. Hurst has appeared several times, and is scheduled to perform scenes from the musical "Pippin" April 6. "David is very professional and has appeared as actor as well as producer of productions in the showcase," says Pat White, Art for Life program coordinator.

White likens the showcase to a streetside bistro. "It's a fluid, continuously changing audience. People passing through the lobby stop to watch the performances; employees

come and go as lunch shifts change." But, so far, none of the performers has become flustered with the mobile audience, she says.

Hurst says working in the showcase is good for him. "It's a great outlet for people who work in different fields of the performing arts. It lets us get our feet wet."

He is about to close the final curtain on his acting career in Columbia and go to New York to see if he can make it as an actor there. "If it happens, great! If not, I'll know that I tried. I owe it to myself to see how I do."



MOMIX, a dance company of athletes, sculptors and mimes, will perform April 19.

Season finales strike a chord

String trio, famous composer and daring dance troupe plan performances in Jesse Auditorium.

Performances to suit all tastes will wrap up the University Concert Series season this month. Chamber music lovers will welcome cellist Peter Wiley to Columbia when the Beaux Arts Trio performs at 8 p.m. April 16 in Jesse Auditorium. Wiley, the trio's new member, joins pianist Menahem Pressler and violinist Isidore Cohen.

Tickets, at \$10 public and \$9 students, are available at Jesse Box Office from 10 a.m. to 4 p.m. April 12 through 15 and one hour before the performance.

Composer and educator Norman Dello Joio will join the University Singers, Choral Union and University Wind Ensembles in presenting "Music for Voices and Winds" at 8 p.m. April 18 in Jesse Auditorium. Con-

ducting the University Singers will be Duncan Couch, professor of music. Paul Drummond, associate professor of music at Central Methodist College, will conduct the Choral Union.

While on campus, the composer will participate in a free convocation, "A Conversation with Norman Dello Joio," at 9:40 a.m. April 18 in the Fine Arts Recital Hall.

Tickets to the concert are \$4 public and \$3 students. They are available at Jesse Box Office from 10 a.m. to 4 p.m. April 12, 13, 14, 15 and 18, and one hour before the performance.

MOMIX, a modern dance troupe, will perform at 8 p.m. April 19 in Jesse Auditorium. Musicologist Michael Budds will present a free Concert Preview at 7 p.m. in the Fine Arts Recital Hall.

Tickets to the concert, at \$11 public and \$10 students, are available at Jesse Box Office from 10 a.m. to 4 p.m. April 12, 13, 14, 15, 18 and 19, and one hour before the performance.

Following the MOMIX performance, the audience is invited to a free reception and exhibition opening of "Public Figures — Private Moments" by photographer Carole Patterson in the Fine Arts Gallery. Patterson, the official photographer for the Concert Series, will display portraits of visiting and residential creative artists at Mizzou.

FOR THE
RECORD

AWARDS BANQUET: The College of Education Alumni Awards banquet will begin at 6:30 p.m. April 9 in N201-202 Memorial Union. At the event, Citation of Merit Awards and the Young Professional Educator Awards will be presented, and officers and directors will be elected. Afterward, a reception honoring the winners will be held in the Faculty-Alumni Lounge. For reservations, call Linda Spinar at 882-5118.

DISPLAY CASES: Two display cases in

the lobby of Jesse Auditorium will be available in June, August and December 1988, and March through December 1989 for offices and departments that want to exhibit highlights of campus history. For scheduling, contact Shirley Delbert in the Visitor and Guest Relations Office, 882-6333.

ELLIS LIBRARY: The Friends of the University of Missouri-Columbia Libraries and the State Historical Society of Missouri Library Book Sale received a \$2,000 grant from Xerox Corp.

PERSONNEL MANAGEMENT ASSOCIATION SCHOLARSHIP: Applications for the \$500 Redmon-Wilson Scholarship are being accepted by the association.

The scholarship is available to full-time upper-class undergraduates enrolled at either Mizzou or Stephens or Columbia colleges who intend to pursue careers in personnel

management or a related field and who have a cumulative grade-point average of at least 2.5.

Applications, available in 28 Heinkel Bldg., are due April 8. For additional information, call Dixie Lenau at 882-7701.

RECOGNITION CEREMONY: Bob G. Woods, dean emeritus of education, will be recognized from 2 to 4 p.m. April 9 in 111 Hill Hall for his contributions to the college. Plans to honor Woods, who was dean for 20 years, include the renovation, naming and dedication of the conference room in 111 Hill Hall and dedication of his portrait.

Current and former faculty are asked to donate an autographed copy of any book they have written for the bookcase in Room 111, which will be designated the Bob G. Woods Library. Send books to Jo Behymer, 101 Hill Hall.

Contributions to the Bob G. Woods Recognition Fund should be sent to Ann Tofle,

114 Hill Hall.

STUDY ABROAD OPPORTUNITIES: Applications for the May 26 through June 9 study seminar in Rome, Italy, for faculty, alumni and students are due April 15 in the English Department, 231 Arts and Science Building.

WOMEN IN ENERGY SCHOLARSHIP: Full-time juniors or seniors majoring in business, education, engineering, home economics, journalism, science or other energy-related fields, are eligible to compete for the \$500 Missouri Women in Energy Scholarship. Applicants must have a minimum overall grade-point average of 3.0. Applications are due April 15. The recipient will be announced May 12.

To apply, contact Wanda Eubank, chairwoman, Missouri Women in Energy Scholarship Committee, 162 Stanley Hall, or call 882-3239.

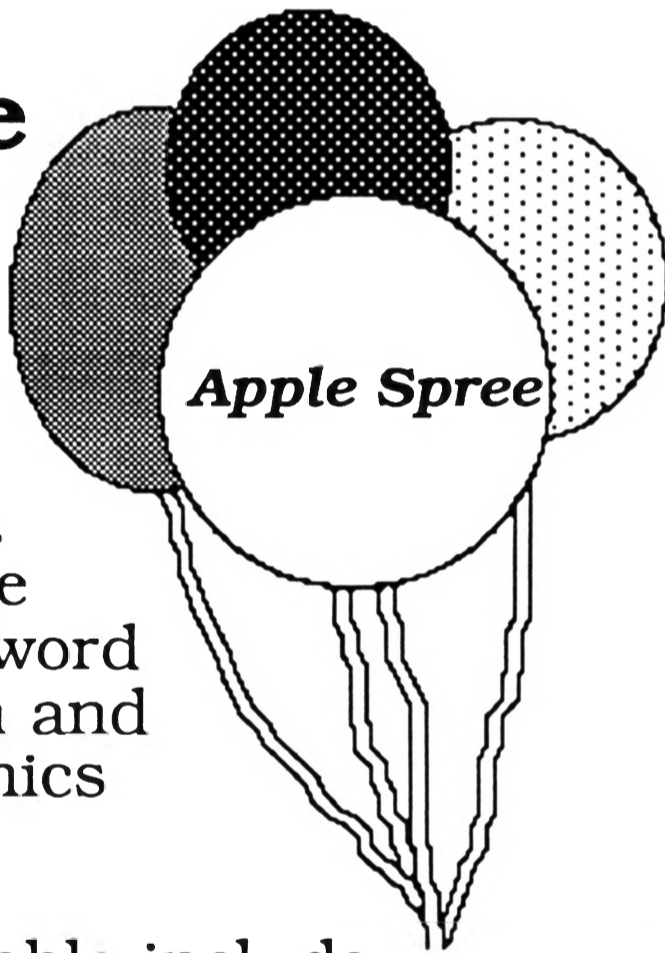
==> **Let's Compute!_**

It's An Apple Spree

What is an Apple Spree? It's a special opportunity to purchase Macintosh bundles. These systems come with the WriteNow word processing program and SuperPaint, a graphics program.

Other options available include ImageWriter II printers and supplies.

All machines will be picked up April 14 & 15 at the Hearnes Fieldhouse. If you haven't ordered your Macintosh yet, contact the Computing Services Demo Room, 22 Heinkel Building, 882-9400 or Computer Spectrum, Brady Commons, 882-2131 for information on how you can take part in the Apple Spree.



a member of the can do crew

CLASSIFIEDS

FOR RENT

3 BR, 2 BATH FULLY FURNISHED HOUSE on quiet street close to campus. Central air, terrace, good yard. Rent negotiable. May 10 to Aug. 20, negotiable. 449-5886.

Pleasant 1-bedroom apartment in sixplex. Close (long walk) to campus—on Old 63 east of Vet Clinic. Private, quiet, low utilities, off-street parking. No undergraduates. \$220-240/month. 445-1892 after 5 p.m.

NICE 2-BEDROOM Rothwell Heights duplex, very private, large kitchen, stove, refrigerator, full basement, garage, w/d hookups, big yard, excellent condition. \$350/month. Available June 1. 445-1892 after 5 p.m.

ATTRACTIVE 2-BEDROOM, 2-bath duplex. Summit Drive near Fairview School. Huge master bedroom, country kitchen, separate family room, w/d hookups. Exceptional value. \$370/month. Available July 1. 445-1892 after 5 p.m.

MODERN, NEW 2 BEDROOM, 2 BATH CONDO in Park DeVille Place. Vaulted ceiling, fireplace, screened in deck, Casablanca ceiling fan, microwave, breakfast bar, w/d hook up, AVAILABLE IMMEDIATELY. 875-8843.

SERVICES

GOING AWAY? Weekend? Vacation? Family emergency? Experienced animal owner will provide loving care for your pets in your home. Licensed, bonded. Excellent references. Call PETCARE. 657-9633.

WANTED

HOUSEPARENT(S) needed for sorority annex. Rent-free one-bedroom apt. with garage close to campus in exchange for lawn work and some security/supervisory responsibilities. 474-4406 or 445-6487.

FOR SALE

FIVE-ACRE woods/meadow tracts, 8 miles SW. \$13,000-18,000 w/10% down; no trailers. Daily to 6:30 p.m., 449-5620.

BUILDING LOT overlooking Niangua Arm of Lake of the Ozarks. Located in Camelot Estates, Camdenton, Mo. Great buy at \$3,500. Call 449-6180 evenings and weekends, for details.

The Classified Advertising Section is open only to faculty and staff members.

A home phone number is required in all classified ads.

Ads must be typed.

Rates: 30-word maximum \$3.

Publication deadlines:

April 15 for April 26

Mizzou Weekly Classifieds: Make your check payable to University of Missouri and send to: Mizzou Weekly, 1100 University Place, Attention: Sherrill.

EXECUTIVE COMMITTEE

Roger Mitchell, chairman, dean of agriculture, 882-3846; Lois DeFleur, provost; Dennis A. Holter, senior development director, Alumni Relations; Barbara Korner, executive staff assistant to the chancellor; Chris Koukola, assistant vice chancellor for University Relations; Jean Madden, vice president/communications, Shelter Insurance Cos.; Don McGlothlin, director of fine arts; and Haskell Monroe, chancellor.

STEERING COMMITTEE

Roger Mitchell, chairman, dean of agriculture, 882-3846; Bill Bondeson, professor of philosophy; Penny Bonnett, student; Ginny Booker, assistant to the vice chancellor for Student, Personnel and Auxiliary Services; Jane Clark, associate professor of journalism; Ken Dean, associate dean of law; Lois DeFleur, provost; Kathleen Edwards, library assistant II; Elmer Ellis, president emeritus; Alex Fink; student; Ernie Funk, professor emeritus of poultry science; Sandra Gautt, associate professor of special education; Gail Imig, assistant vice president for academic affairs, Extension; Barbara Korner, special assistant to the chancellor; Chris Koukola, assistant vice chancellor for University Relations; Jack Lengyel, director of Intercollegiate Athletics; Jean Madden, vice president/communications, Shelter Insurance Cos.; Jim Maher, student; Michael Mardikes, director of public affairs, UM-Kansas City; Forrest McGill, director of the Museum of Art and Archaeology; Don McGlothlin, director of fine arts; Richard McKinzie, professor of history, UM-Kansas City; Edith Mitchell, assistant professor of medicine; Haskell Monroe, chancellor; Bob Mussman, director of University Relations; James Olson, president emeritus; Osmund Overby, professor of art history and archaeology; Mike Patterson, president-elect of the Graduate-Professional Council; John Pelham, program director, statewide extension; James Neal Primm, professor of history, UM-St. Louis; C. Brice Ratchford, president emeritus and professor of agricultural economics; David Rogers, attorney; Lynn Waggoner, director of public information, UM-Rolla; and Mark A. Wilkins, student.

COMMUNICATIONS SUBCOMMITTEE

Jean Madden, chairman, vice president/communications, Shelter Insurance Cos., 445-8441; Patsy Ponder Dalton, assistant division director, Administrative Services, Marketing; Henry Hager, assistant professor of advertising; Chris Koukola, assistant vice chancellor for University Relations; Bob Mussman, director of University Relations; Steve Shinn, director of Publications and



Sesquicentennial leaders

Members of Sesquicentennial committees and subcommittees reflect the influences of the community and the state in the celebration of the University's 150th anniversary, says Don Haskell, director of University Events.

"Just as the Sesquicentennial is meant to involve the University, the city of Columbia

and Missouri in general, we are appointing committees whose members represent all those elements," Haskell says.

"We think this is a prime example of the University and the community working together. And we really appreciate all the time and effort the committee members are devoting to their jobs."

Alumni Communication; and Mary Still, director of Mizzou News Bureau.

CONFERENCE COMMITTEE

Ken Dean, chairman, associate dean of law, 882-6488; Don Fancher, associate vice provost, Extension Administration; Bonnie Heidy, administrative associate in Extension Publications; C. Brice Ratchford, president emeritus and professor of agricultural economics; and Lorah Steiner, director of the

Columbia Convention and Visitors Bureau.

GRANT REVIEW SUBCOMMITTEE

Roger Gafke, chairman, vice chancellor for Alumni, Development and University Relations, 882-7703; John McCormick, professor of chemistry; Edith Mitchell, assistant professor of medicine; and Osmund Overby, professor of art history and archaeology.

LECTURES AND SYMPOSIA

SUBCOMMITTEE

Bill Bondeson, chairman, professor of philosophy, 882-3875; William Biers, professor of art history and archaeology; Jane Clark, associate professor of journalism; Richard Finkelstein, professor of microbiology; John Foley, professor of English; Ed King, director of University Press; Mike Mardikes, director of public affairs, UM-Kansas City; Freda McKee, administrative assistant in Student, Personnel and Auxiliary Services; Dick McKinzie, professor of history, UM-Kansas City; Mike Patterson, student; Don Riddle, professor of biological sciences; Donald Swoboda, vice provost, Extension Administration; Lynn Waggoner, director of public information, UM-Rolla; and Sam Werner, professor of physics.

PERFORMANCES AND EXHIBITIONS SUBCOMMITTEE

Forrest McGill, chairman, director of the Museum of Art and Archaeology, 882-3591; Stephen Archer, professor of theater; Bill Bondeson, professor of philosophy; Brooke Cameron, associate professor of art; Duncan Couch, professor of music; Linda Cupp, director of the Arts Resource Council; Pat Fitzgerald, director of the Heames Center; James Froese, assistant professor in extension; James Miller, associate professor of theater; Osmund Overby, professor of art history and archaeology; Pat Overton, director of community and cultural studies, Columbia College; Debbie Prost, administrative assistant in education; and Janice Wenger, associate professor of music.

SPECIAL EVENTS AND CEREMONIES SUBCOMMITTEE

Don Haskell, chairman, director of University Events, 882-1989; Bud Bender, director of Development and Annual Giving; Penny Bonnett, student; Ginny Booker, assistant to the vice chancellor for Student, Personnel and Auxiliary Services; Joe Castiglione, assistant director of Intercollegiate Athletics; Carolyn Chaney, assistant director of Admissions; Bill Crawford of the Boone County Historical Society; Sherrill Harsh, advertising coordinator in Publications and Alumni Communication; Chris Hawf, manager of Developmental Research and associate director of Administrative Services; Jim Maher, student; Howard Marshall, director of the Missouri Cultural Heritage Center; David Rogers, attorney; Cynthia Sumner-Davis, assistant director of development in agriculture; Donna Turner, administrative assistant in University Relations; and Greg Wright, Missouri Students Association president.

SPECIAL PROJECTS SUBCOMMITTEE

Reach 10,800 Mizzou Faculty and Staff

with your message, product, service or offer—place your classified ad in *Mizzou Weekly*. Vacation home to rent? Specialty products or services to offer? Needing to car pool? *Mizzou Weekly* can help you reach your audience.

Rates: 30 word maximum \$3.
The Classified Advertising Section is open only to faculty and staff members. A home phone number is required in all classified ads.
Publication deadlines:
April 15 for April 26 issue
April 22 for May 3 issue

Mizzou Classifieds: A great way to get results. To get your classified ad in *Mizzou Weekly*, simply fill out the form at right and return it through campus mail with your check, payable to University of Missouri, to:
Mizzou Weekly
1100 University Place
Attn: Sherrill

Name _____

Department _____

Daytime Phone _____

Run my ad in the following issue of *Mizzou Weekly*: _____

Use this space to type your classified message!

Category _____

BUY/SELL/TRADE
RENTALS
PERSONALS
CAR POOL
SERVICES

Q. What should I do if I can't find a place to sit in Brady?

A. Pull up a chair & fill out a survey.



- ★ Free 16 oz. soft drink for filling out survey on expanding Brady Commons. (Compliments of Campus Dining Service)
- ★ Survey distributed April 4-8 during the first week of pre-registration. Turn in at Memorial Union or Brady Commons dining services to receive your free soft drink.
- ★ We want your input to see what student needs could be filled in the new Brady Commons 2nd floor addition.

Sponsored by Memorial Union/Brady Commons Advisory Committee.

Sandra Gautt, chairwoman, associate professor of special education, 882-2819; Mary K. Dains, assistant director of Western Historical Manuscripts, State Historical Society; Gloria Deckard, assistant professor of health services management; Carol Sue DeLaite, coordinator of Development; Kathleen Edwards, library assistant II; James Goodrich, director of the State Historical Society; Tom Guy of B & F Publishing; Betty Cook Rottmann, retired coordinator of Visitor and Guest Relations; and Suzanne Schoonover, administrative assistant in agricultural engineering.

SCHOOL AND COLLEGE PROGRAM COMMITTEES

Lois DeFleur, chairwoman, provost, 882-6596.

AGRICULTURE

Roger Mitchell, chairman, dean of agriculture, 882-3846; Milton Bailey, professor of food science and nutrition; Linda Benedict, instructor in extension education; Bruce Bullock, professor of agricultural economics; Charles Campbell, associate professor of agricultural extension; LeRoy Day, professor emeritus of agricultural engineering; Robert Goodman, professor of plant pathology; Robert Hall, associate professor of entomology; Edward Hassinger, professor of rural sociology; Diana Helsel, associate dean; George Jesse, associate professor of animal science; Ernest Kung, professor of atmospheric science; Richard Linhardt, associate professor of agricultural education; Tina McLaury, chief clerk in animal sciences; Allan Purdy, retired director of Financial Aid; Rex Ricketts, professor of dairy science; Marlin Rogers, professor emeritus of horticulture; Ralph Rogers, retired assistant to the dean; Rhonda Scheulen, director of student affairs and public relations in agriculture; Ken Schneeberger, assistant dean and assistant director of agricultural experiment stations; Suzanne Schoonover, administrative assistant in agricultural engineering; Dale Sechler, professor of agronomy; Sam Shirky, associate dean emeritus; Randall Smoot, supervisor of the Greenley Center; Jim Spencer, student; Al Vogt, director of forestry, fisheries and wildlife; and Warren Zahler, associate professor of biochemistry.

ARTS AND SCIENCE

Jim Miller, chairman, associate professor of theater, 882-0534; Noble Cunningham, professor of history; Tom Freeman, professor of geology; Don McGlothlin, director of fine arts; Clint Petty, professor of math; and Richard Watson, professor of political science.

BUSINESS AND PUBLIC ADMINISTRATION

To be appointed.

EDUCATION

Jo Behymer, co-chairwoman, assistant dean and associate professor of practical arts and vocational-technical education, 882-5118; Veralee Hardin, co-chairwoman, professor emeritus; Sterl Artley, professor emeritus; Bob Birkenholz, assistant professor of practical arts and vocational-technical education; Ruby Cline, retired faculty member; Irv Cockriel, associate professor of higher and adult education; Becky Danner, student; Marlynn Finley, reading specialist for Claymont Elementary School; Marilee Howell, associate professor of health and physical education; Clara Hudson, retired teacher; Lloyd Jorgenson, professor emeritus; Jack Kinder, executive secretary of the Missouri State Teachers Association; Lois Knowles, retired faculty member; Dixie Kohn, president of the Mineral Area College; Mary Jane Lang, professor emeritus; Tom Lawson, retired superintendent of the Hazelwood school district; Laura Loesing, executive staff assistant in education academic affairs; Jack Matthews, retired faculty member; Marge Nathe, senior secretary in curriculum and instruction; Neila Pettit, professor emeritus; Heather Richter, student; Genie Banks Rogers, alumna; Jack Ross, faculty member at Northeast Missouri State University; Barbara Olson Smith, retired senior secretary in special education; Linda Spinar, administrative assistant in education; Hank Steere, research associate in educational administration; John Stolt, associate superintendent of Columbia public schools; Bob Watkins, deputy superintendent of the Independence school district; Judy Wedman, assistant professor of curriculum and instruction; Julie Whitaker, teaching assistant

Please turn to Page 8.

SPRING SPECIALS

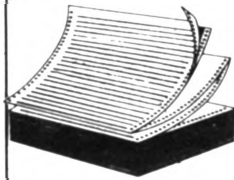
Vis-a-Vis Overhead Projector Markers

Set of Four

- Red
- Blue
- Black
- Green

#547

\$211 per 4-Pack



Computer Paper

Keenedge
9 1/2" x 11"
20 lb. Weight



500 sheets/Pkg.
#121C

\$450 /Pkg.

3100 sheets/Case
#121D

\$2063 /case

For all your office, janitorial and maintenance supplies ...

Call Us First!

General Stores
882-6906



Can-Do-Crew



MIZZOU
WEEKLY

Vol. 9

No. 26

A publication of the University of Missouri-Columbia faculty and staff, published every Tuesday during the academic year and twice a month during the summer by Publications and Alumni Communication, a department of Development, University and Alumni Relations Division, 1100 University Place, 882-7357. News deadline is noon Tuesday the week before publication. Annual subscriptions are available to retirees for \$10. Faculty Council and Staff Council communication committee members: Donald Anderson, Gerald Browning, Pete Dohm, Jim Flood, Pulletta King, Joye Patterson, John Van Hook, Larry Windmoeller and Thomas Wyllie.

Editor: Carol Hunter
Staff writers: Sue Richardson, Mildred Robertson and Mary Vermillion
Advertising coordinator: Sherrill Harsh
Graphic editor: Larry Boehm

Fulbright Visiting Lecturer
Sven Erland Olsson

Research Associate, The Swedish Institute for Social Research, University of Stockholm, former Op-Ed Page Editor of Sweden's main daily, *Dagens Nyheter*.



Wednesday
April 6
3 p.m.
106 Pickard Hall

"Swedish Social Policy After the Crisis of the Welfare State"

Sponsored by the Center for International Programs and Studies with the Department of Sociology. Funding Assistance provided by the UMC Lectures Committee and the Council for the International Exchange of Scholars.



Need Multiple Copies at Night or on Weekends?

Grants, manuscripts and proposals are not always written between 9 and 5. If you are working on projects in the evening or on weekends and "quick copy" is closed come to

Ellis Library Copy Service

On the first floor of the main library

We can run multiple copies, collate and staple for you, all for only 5¢ a copy.

And, of course, we can also reduce, enlarge, make 11x17 copies and colored paper copies.

Hours: Monday-Friday 8-midnight
Saturday 9-9 p.m.
Sunday noon-midnight

We accept department IDs, checks or cash.

Department of Residential Life

Wellness Week Run

Saturday, April 9, the Department of Residential Life will co-sponsor a Wellness Week Run. A fun 1.3 mile run/walk will be held at 9 a.m. and a 5 mile run will follow at 9:20 a.m. in front of Gillett Hall. The cost for pre-registering is \$3 for students and \$4 for faculty and staff and public. The cost for registering at the race is \$4 students and \$5, faculty, staff, public. Medallions will be awarded to the first place finishers and ribbons for second and third place finishers. Registration and check-in is at 8:30 a.m. T-shirts to all registered runners the day of the race.

wellness run map

KEY

1.3 MILE RUN
FIVE MILE RUN	—————

IMPORTANT: YOU MUST RUN THE LARGER COURSE TWICE FOR IT TO TOTAL FIVE MILES!

BOTH RUNS START AND END ON VIRGINIA ST. AT HUDSON/GILLETT HALL.

BEAR TRACKS
1988 WELLNESS WEEK RUN
Sponsored by the Dept. of Residential Life

For more information call 882-2834 or stop by 15 Defoe Hall

Continued from Page 7.

in marketing education; Bruce Wilson, student; Roger Wilson, state senator; and Bob Woods, director of International Programs and Studies.

ENGINEERING

Jack Lysen, chairman, director, Engineering Experiment Station, 882-8355; Joel Chandler Jr., director, Development Fund, Development; Cy Harbourt, dean of engineering; John Miles, professor of mechanical and aerospace engineering; John O'Connor, professor of civil engineering; Charles Slivinsky, professor of electrical engineering.

HOME ECONOMICS

Bea Smith, chairwoman, dean of home economics, 882-6227; Jackie Coon, senior secretary in family economics and management; Betty Dillard, president-elect of the Home Economics Alumni Organization; Mary Gray, associate professor of child and family development; Richard Helmick, professor of housing and interior design; Sandra Helmick, professor of family economics and management; Pat Hilderbrand, assistant professor of housing and interior design; Elizabeth Hensley, professor emeritus of human nutrition; Pauli Landhuis, assistant professor of human nutrition, foods and food systems management; Margaret Mangel, dean emeritus; Betty Martin, associate professor of practical arts and vocational-technical education; Martha Jo Martin, assistant dean of home economics; Jeanne Morrison, assistant director of the Expanded Food and Nutrition Education Program; Freda Powers, past president of Missouri Extension Homemakers Association; Leigh Anne Taylor, student; and Laurel Wilson, assistant professor of textiles and apparel management.

JOURNALISM EXECUTIVE COMMITTEE

Jim Atwater, chairman, dean of Journalism, 882-4514; Rod Gelatt, professor and chairman of broadcast news; James K. Gentry, assistant professor and chairman of editorial; Bob Humphreys, associate professor

and chairman of advertising; Daryl Moen, director of the Mid-Careers Program; Rene Rau, administrative assistant to the dean; and Pansy Riley, administrative associate.

LAW

To be appointed.

LIBRARY AND INFORMATIONAL SCIENCE

Ronald Powell, chairman, associate professor of information science, 882-9545; Kristen Campbell, student; Francis J. Flood, associate professor and chairman of library science; Marsha Miller, data entry operator in information science; Ralph H. Parker, dean emeritus; Fred Raitel, program director in continuing education; and Maydell Senn, executive staff assistant to the dean.

MEDICINE

Weldon D. Webb, chairman, instructor in communications and public relations, 882-4105; Michael C. Perry, professor of medicine; and Hugh Stephenson, interim dean.

NURSING

Rose Porter, co-chairwoman, associate professor of nursing, 882-0227; Ann Rosenow, co-chairwoman, associate dean, 882-0292; Vicki Conn, instructor in nursing; Betty Crim, assistant professor of nursing; Shirley Farrah, director of the Continuing Education Program; Irma Fleeman, assistant dean; Larry Ganong, associate professor of nursing; Eileen Hubsy, assistant professor of nursing; Betty Layer, administrative associate; Mary Manderino, associate professor of nursing; Joan Meisner, assistant professor of nursing; Verna Rhodes, associate professor of nursing; and Barbara Shelton, associate professor of nursing.

PUBLIC AND COMMUNITY SERVICES

To be appointed.

VETERINARY MEDICINE

Michael C. Tarry, chairman, director of Development Fund, Development, 882-6511; Gerald M. Buening, professor of veterinary microbiology; and James G. Thome, associate professor of veterinary medicine and surgery, and director of continuing education and extension.

Bargains Till the End of April!!

PAPERMATE LIQUID PAPER CORRECTION FLUIDS

Corrects errors at a touch. White.

STANDARD BOND
(PAP-564-01)

1.08 EA
REG. \$1.59

PHOTOCOPY
(PAP-710-01)

1.14 EA
REG. \$1.69

PEN & INK
(PAP-747-01)

1.14 EA
REG. \$1.69



SPARCO STAPLES

Standard, chisel point. 210 strip. 5000 per box. (SPR-HB210)



NOW!
79¢ BOX
REG. \$2.00

SPARCO STAPLE REMOVER

Removes staples quickly and neatly. (SPR-86000)

65¢ EA.
REG. 90¢



ESSELTE HANGING BOX FILE FOLDERS



Box bottom with closed sides. Includes tabs and inserts. Blue. 25 per box.

2" EXPANSION
Letter (ESS-59202)

21.49 BOX
REG. \$31.39

Legal (ESS-59302)

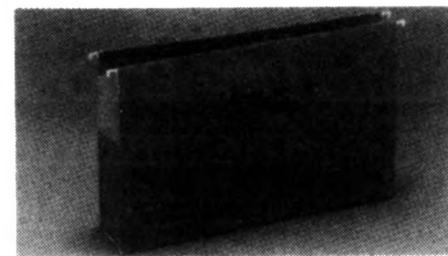
23.49 BOX
REG. \$34.29

3" EXPANSION
Letter (ESS-59203)

22.99 BOX
REG. \$33.59

Legal (ESS-59303)

24.99 BOX
REG. \$36.49



UNIVERSITY BOOKSTORE

Some items may have to be special ordered.

Continued from Page 8.

MIZZOU ALUMNI ASSOCIATION PROGRAM COMMITTEE

Michael Kateman, chairman, assistant director of Alumni Relations, 882-6611; John Booth II, retired vice chairman of Oklahoma Mortgage Co.; Vera Burk, retired owner of KIRX/KRXL Radio; Betty H. Daniel, alumna; Doris England, alumna; Joyce Lake, assistant director of Alumni Activities; James Millan, attorney; Betty S. Spaar, editor and publisher of the Odessa; Kaye Tiemann, alumna; Audrey Walsworth of Walsworth Publishing Co.; and Blanche Wolpers, retired editor of the Daily American Republican.

ADMINISTRATIVE SERVICES PROGRAM COMMITTEE

To be appointed.
COLUMBIA COMMUNITY ALUMNI AND FRIENDS PROGRAM COMMITTEE

David Rogers, chairman, attorney, 442-0131.

GPC STUDENT PROGRAM COMMITTEE

To be appointed.
INTERCOLLEGIATE ATHLETICS PROGRAM COMMITTEE

To be appointed.
LIAISON COMMITTEE WITH THE UNIVERSITY OF VIRGINIA

Haskell Monroe, chairman, chancellor, 882-3387; Richard Brownlee, retired director of the State Historical Society of Missouri; Noble Cunningham, professor of history; Ed Kaiser, director of the Honors College; and Ted Tarkow, associate dean of arts and science.

MSA STUDENT PROGRAM COMMITTEE

Mark Wilkins, chairman, student, 884-1387.

SESQUICENTENNIAL ARCHIVES COMMITTEE

Annette Sanders, chairwoman, coordinator of special projects in University Events, 882-3341; Mary K. Dains, assistant director of Western Historical Manuscripts, State Historical Society; Carol Sue DeLaite, coordinator of Development; Lynn Gentzler, assistant director of Western Historical Manuscripts; Ralph Havener, archivist in University Archives; and D.J. Wade, reference specialist in University Archives.

SPIRIT OF MIZZOU DESIGN COMMITTEE

Don Haskell, chairman, director of University Events, 882-1989; Pat Atkinson, associate professor of speech and dramatic arts; Cynthia Davis, assistant director of development in agriculture; Kee Groshong, interim vice chancellor for Administrative Services; Denny Holter, senior development director in Alumni Relations; Chris Koukola, assistant vice chancellor for University Relations; Ken Schneeberger, assistant dean of agriculture and assistant director of agricultural experiment stations; and Steve Shinn, director of Publications and Alumni Communication.

STATE OF MISSOURI PROGRAM COMMITTEE

To be appointed.
STUDENT, PERSONNEL AND AUXILIARY SERVICES PROGRAM COMMITTEE

To be appointed.
UNIVERSITY EXTENSION PROGRAM COMMITTEE

To be appointed.
UNIVERSITY HOSPITAL AND CLINICS PROGRAM COMMITTEE

Patsy Dalton, chairwoman, assistant division director, Administrative Services, Marketing, 882-1008.

UNIVERSITY LIBRARIES

Martha Shirky, chairwoman, librarian II, 882-6748; Margaret Howell, librarian IV; and Marilyn Schappert, administrative assistant.

M I Z Z O U
PEOPLE

SANDRA ALPER, associate professor of special education, served on a panel for the Office of Special Education and Rehabilitation Services in the Department of Education in Washington. She reviewed proposals for innovative programs for children and youth with severe handicaps.

REUBEN ALTMAN, professor of special education, co-wrote "Attitudes of Students with Mental Retardation Toward Their Handicapped and Non-Handicapped Peers" for the December issue of Education and Training in Mental Retardation.

LLOYD H. BARROW, associate professor of curriculum and instruction, wrote "Demographic Survey of New England's Secondary Science Methods Faculty," published in Science Education.

His article "Ninth Grade Students' Attitudes Toward Energy: A Comparison Between Maine and New Brunswick" was published in the Journal of Environmental Education.

WILLIAM BERRY, professor of art, will have two drawings on display in art exhibits across the country.

"Still Life: Apple vs. Orange" will be on display at the Fort Hays (Kan.) State University Museum. The drawing is part of the 13th National Kansas Small Painting, Drawing and Print Exhibition.

"Still Life: Lunch at MacDowell" was accepted in the Dakotas 100 International Exhibition of Artwork on Paper.

ROBERT J. BEVINS, professor of agricultural economics, received the Carl N. Scheneman Award at In-Service Education No. 1 for designing, organizing and promoting a series of three one-day federal farm policy workshops.

USDA Competitive Grants valued at \$125,644 were received by **DALE BLEVINS**, professor of agronomy; **DOUGLAS**

RANDALL, professor of biochemistry; and **JOSEPH POLACCO**, associate professor of biochemistry, to study nitrogen fixation and ureide metabolism in soybeans.

ALLEN C. BLUEDORN, associate professor of management, presented "Time and Organizational Behavior" at The Operations Research Society of America/The Institute of Management Sciences meeting Oct. 25 through 28 in St. Louis. He also was chairman of the "Time, Organizations and Strategic Planning" symposium.

STANLEY B. BOTNER, professor of public administration, attended the Working Group on the Modernization of Budgetary Systems and Financial Controls meeting March 24 and 25 in Malaga, Spain.

The meeting, sponsored by the International Institute of Administrative Sciences, involved participants from 13 industrialized countries in North America and Europe who met to develop the final summary report on

Please turn to Page 10.

Building a better Brady

If all goes as planned, a second floor will be added to the east side of Brady Commons, directly above the University Bookstore. Surveys being distributed this week in Brady Commons will allow faculty, staff and students to make suggestions on how the space should be used.

The expansion could house an outside terrace, additional meeting rooms or a multipurpose ballroom. "Brady Commons is so

crowded. More and more students are looking for space to sit down and relax," says A.K. Rahman, director of Memorial Union and Brady Commons. "We also need faculty and staff input. Faculty and staff groups are holding more meetings at Brady Commons. We need to know if they would like meeting rooms or banquet facilities there."

The Memorial Union and Brady Commons student advisory committee will consider survey results and then make a recommendation to Norman Moore, vice chancellor for Student, Personnel and Auxiliary Services.

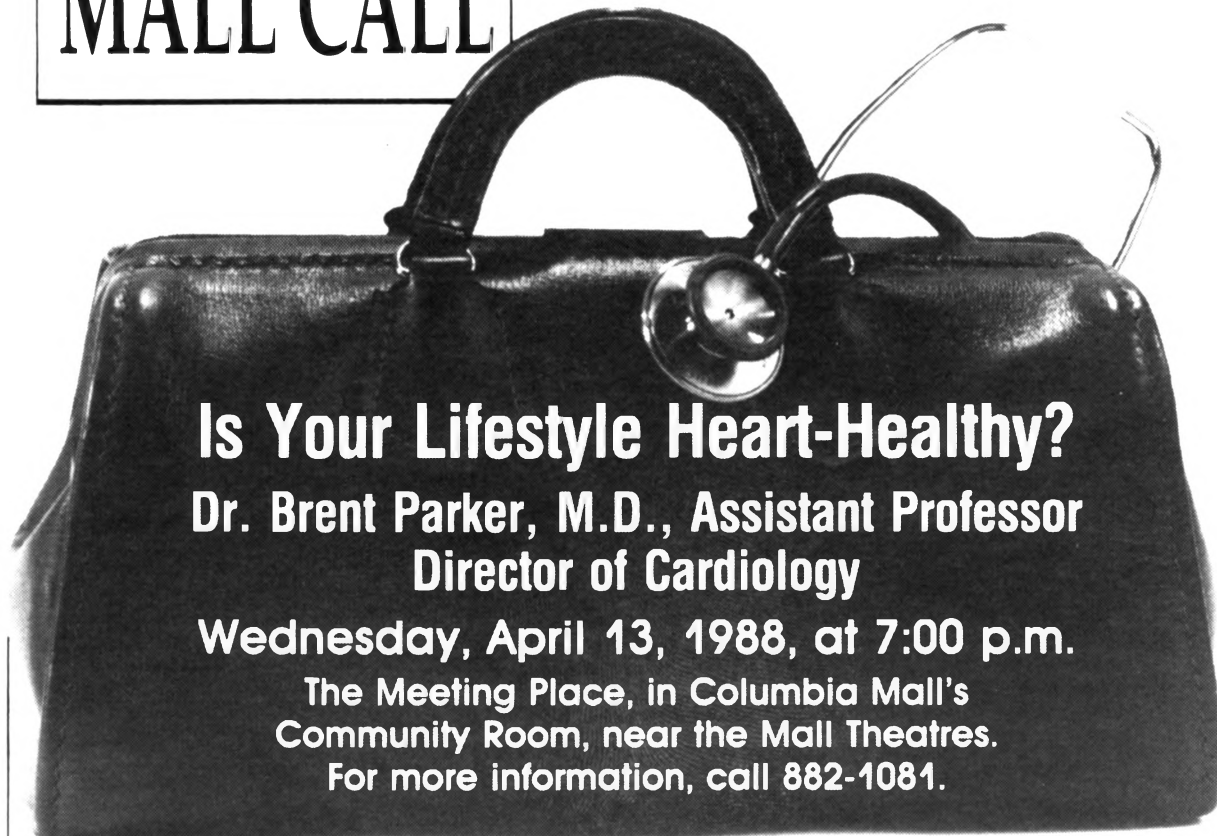
Budget reserves from the unit would be applied to the construction costs. Depending on the cost of the expansion, additional

funds may be solicited from the University. The survey includes a question asking students whether they would support an increase in student fees to finance the construction.

Rahman says the University will meet with an architect when a decision is made on how to use the space. A design will be submitted to Moore and forwarded to the Board of Curators for approval. One thing is certain — the second floor will be joined by an overpass to the renovated Brewer-Rothwell Student Recreation Center.

The original addition, which cost \$2.9 million, was dedicated in December 1985. It includes the University Bookstore and a student activities center.

MALL CALL



Is Your Lifestyle Heart-Healthy?
Dr. Brent Parker, M.D., Assistant Professor
Director of Cardiology

Wednesday, April 13, 1988, at 7:00 p.m.

The Meeting Place, in Columbia Mall's
Community Room, near the Mall Theatres.

For more information, call 882-1081.

UNIVERSITY OF MISSOURI-COLUMBIA HOSPITAL & CLINICS



Columbia Mall
I-70 & Stadium Blvd
Columbia, MO

The Staff for Life

EXHIBITS

BRADY COMMONS GALLERY: Drawings, paintings and sculptures by Greg Leonhardt will be on display through April 7. Hours are 11 a.m.-5 p.m. weekdays.

ELLIS LIBRARY: An exhibition of original prints, illustrated books, poster and wood blocks by Michael McCurdy will be on display through April 15 on the main floor of Ellis Library.

FINE ARTS GALLERY: "New Jewelry Movement by Marjorie Schick" will be on display through April 15. Hours are 10 a.m.-4 p.m. weekdays and 2-4 p.m. Sundays.

BRADY COMMONS GALLERY: Sculptures and drawings by Willy Stathem will be on display April 11-21. Hours are 11 a.m.-5 p.m. weekdays.

Spring Workshops

at the MSA Craft Studio
beginning March 28

- * Batik
- * Stained Glass
- * Weaving
- * Calligraphy
- * Ceramic Dinnerware
- * Photography

Save \$5 with this coupon

For more information contact
the Craft Studio at 882-2889 or
stop by 203 Brady Commons

Continued from Page 9.

the group's findings.

MICHAEL BUDDS, musicologist, is editor of the 1988 Proceedings of the College Music Society.

ARUN CHATTERJEE, professor of plant pathology, presented "Molecular Genetics of Syringotoxin Production" at the meeting of the third international working group on "Pseudomonas syringae pathogens" in Lisbon, Portugal.

ROBERT CORWIN, professor of veterinary microbiology, presented "Beef Parasite Control in Missouri" at a cow-calf meeting March 7 in Warrensburg, Mo., and "Beef Parasite Control in the Midwest" at a cow-calf veterinary extension program March 24 through 26 in Kansas City.

He attended the Southern Conference of Animal Parasitologists meeting March 26 through 29 in Baton Rouge, La.

ROSS COWART, assistant professor of veterinary medicine and surgery, presented "Health Information Systems: Slaughter Check Information Analysis for Missouri Swine Producers" and presided at two scientific sessions March 6 through 8 at the American Association of Swine Practitioners meeting in St. Louis.

PETER N. DAVIS, professor of law, presented "Introduction to Oil and Gas Law" March 3 at a CLE conference in Kansas City.

GRANT DARKOW, professor of atmospheric science, and **HENRY LIU**, professor of civil engineering, were among the speakers at the Severe Weather Preparedness Seminar March 5 on campus. The Atmospheric Science Department sponsored the meeting, which dealt with issues on severe weather operations, the role of spotters and the public, tornado statistics, safety of buildings and current advancements in forecasting.

NIEL EDMUNDS, associate professor of practical arts and vocational-technical education, presented "The Next Generation of Industrial Education Teachers—Where Will They Come From?" at the Missouri Industrial Teacher Educators Conference Feb. 6 in Branson, Mo.

IRVING EPSTEIN, assistant professor of higher and adult education and foundations, and **PHIL HARRISON**, a doctoral candidate, co-presented "Critical Issues in the Teaching of Comparative and International Education" Feb. 19 and 20 at the Midwest Comparative and International Education Society Annual Conference at Illinois State University.

Epstein wrote "Behavioral and Psychological Attributes of Juvenile Delinquents in the People's Republic of China," which was published in Asian Thought and Society. His article "China's Keypoint Schools: A Means for the 'Inclusion' of the Elite?" was published in East-West Education.

CARL H. ESBECK, professor of law, discussed "Five Views of Church-State Relations in Contemporary American Thought" as part of the Ronald R. Nelson Scholars and Artists Series at Northwestern College.

He testified before Missouri House and Senate committees on bills he drafted that deal with regulating day-care centers that are operated by religious organizations.

Esbeck also assisted the House with drafting an anti-discrimination section for House bills 1151 and 1044 on acquired immune deficiency syndrome.

SHIRLEY FARRAH, received the 1988 Citation of Merit from the School of Nursing Alumni Organization. The group presents the award to nursing graduates who have made outstanding contributions to the profession.

Farrah, director of the school's continuing education program, has served as president of the alumni organization and of the 7th District Missouri Nurses Association. In 1985, MNA named her Nurse of the Year.

ARMANDO R. FAVAZZA, professor and associate chairman of psychiatry; **FRANCES J. JOY**, clinical instructor (mental health sciences); and **JAMES M.A. WEISS**, professor and chairman of psychiatry, participated in the scientific program co-sponsored by the Missouri State Medical Association and the Missouri Psychiatric Association March 18 in Kansas City.

Favazza and Joy took part in a panel discussion on "Alcoholism: What Can We Do About It?" Weiss was the panel's moderator.

Weiss, who is president of the Missouri Psychiatric Association, conducted the group's annual general meeting and was master of ceremonies at the annual dinner.

LYNETTE FEENEY-BURNS, professor of ophthalmology, received a five-year \$687,541 grant from the National Eye Institute to continue her studies of age-related muscular degeneration of the retina. She also received a \$40,000 Senior Scientific Investigator Award from Research to Prevent Blindness in recognition of her contribution to eye research.

CHARLES R. FRANZ, assistant professor of management, presented "User Perceptions of Implementation Support Services" at the annual meeting of the Decision Sciences Institute Nov. 23 through 25 in Boston. He has been invited to serve on the program advisory committee of the 1988 International Conference on Information Systems.

LORIS. FRANZ, associate professor of management, presented "Rule Based Optimization Procedures for Decision Support Systems" at the annual meeting of the Decision Sciences Institute Nov. 23 through 25 in Boston.

ARTHURE. GAUS, former state extension horticultural specialist, was honored Jan. 26 by the Missouri State Horticultural Society for his 33 years of service. At a dinner at the Holiday Inn Executive Center, he received awards from the society and from the Apple Merchandising Council, along with a book of letters from friends and associates.

SHIRLEY GARRETT, lead janitor, was named Employee of the Month for March by Campus Facilities.

MAURICE GEBHARDT, professor of agricultural engineering, was named Engineer of the Year of the USDA's Agriculture Research Service. The award, presented by the National Society of Professional Engineers, honors Gebhardt for his research on closed systems pesticide application, low volume herbicide application, soybean production systems and soybean computer modeling.

JAMES K. GENTRY, chairman of the editorial department in the School of Journalism, wrote "Taking Stock at Small Papers: How the Crash Hit Home" that was published in Washington Journalism Review. The report assesses the coverage of the Oct. 19 stock market crash by selected small- and medium-sized daily newspapers.

SUSAN GIBSON, instructor in veterinary pathology, reviewed facilities, programs and laboratories of the comparative medicine department March 16 through 18 at the University of South Alabama in Mobile.

TED GREEN, assistant professor of veterinary microbiology, presented "Parasite Associated with AIDS Infection" March 21 at St. Francis Hospital in Cape Girardeau, Mo.

NORMAN GYSBERS, professor of educational and counseling psychology, spoke at the Employee Development Facilitator Training Conference of the U.S. Postal Service Jan. 11 through 15 in Lake Buena Vista, Fla.

He was appointed to the national advisory board for the ERIC Clearinghouse on Adult, Career and Vocational Education.

Campus Dining Services

Stop by and
help us celebrate
Staff Recognition Week.

SPECIALS APRIL 4-8th

Union Cafe:
Slice of Quiche 99¢

Brady's Grill:
Burrito \$1.29 (reg. \$1.65)
(served 10:30-2 p.m.)

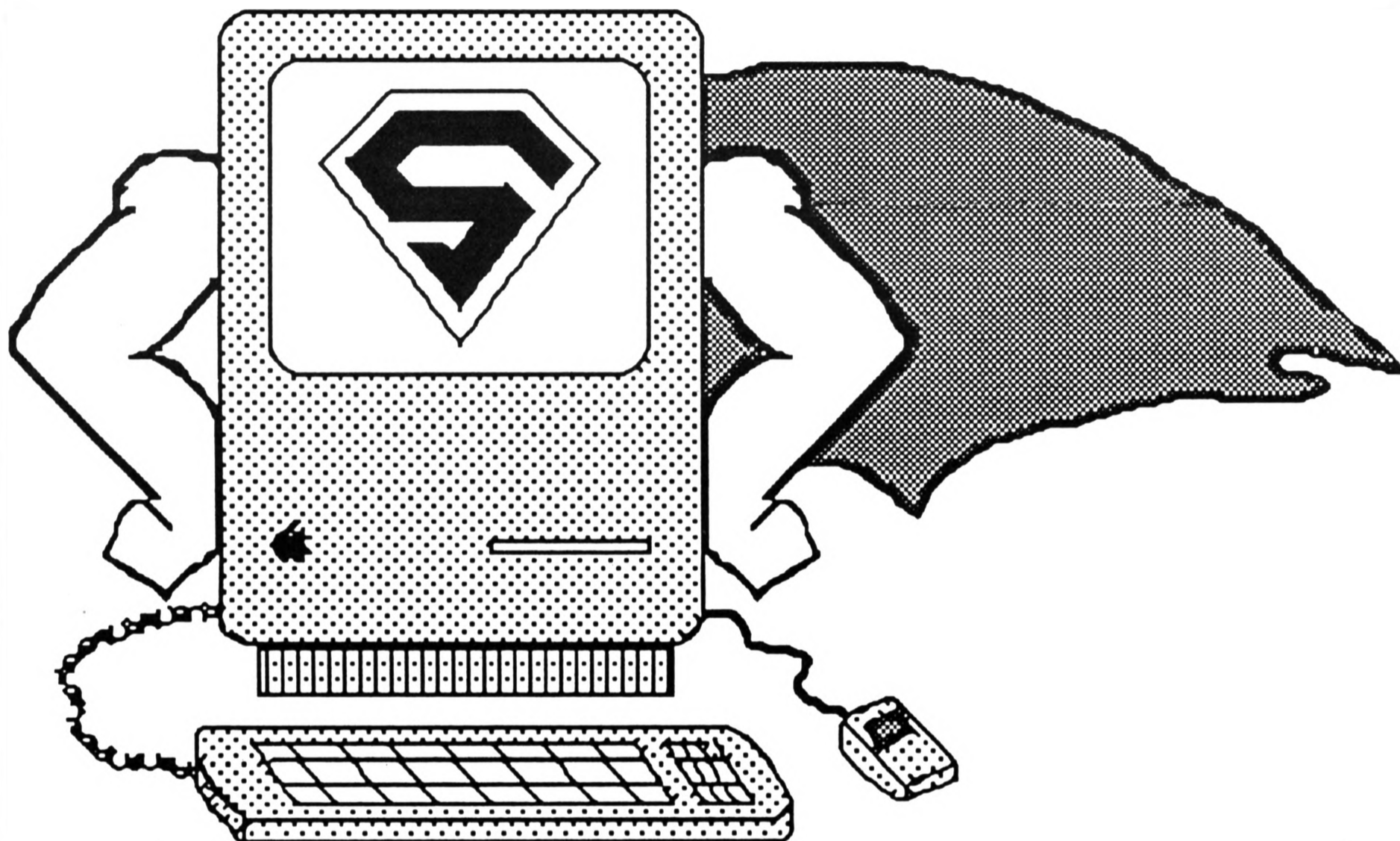
All Satellite Snack Bars:
8 oz. Coffee 10¢

The Bengal:
Smoked Meat Sandwich 99¢ (reg. \$1.29)

Hawthorn Room:
Hawaiian Chicken \$3.50

Tiger Pause:
Pizza Slice 99¢ (reg. \$1.25)

Super Mac.



**Faster than a running mouse.
Stronger than a print command.**

Behind the mild-mannered exterior of the Macintosh computer lies the hero of print graphics. Create freehand artwork, change typefaces, design publications -- all with a push of the mouse button.

Visit the Computing Services Demo Room, 22 Heinkel Building, 882-9400, or Computer Spectrum, Brady Commons, 882-2131, to see how Super Mac can save your day, or at least make it a lot easier.



CALENDAR

Send calendar items in Campus Mail to Scott Wyman, Mizzou Weekly, 1100 University Place, by noon Tuesday the week before publication.

Events are free and open to the public unless otherwise noted.

Highlights

TAP DAY: Initiation of new members of Mortar Board, QEBH, Mystical Seven, LSV and Omicron Delta Kappa will be held from 9:15-10:15 a.m. April 6 on Francis Quadrangle. In case of rain, the ceremony will be held in Jesse Aud.

STUDENT ENSEMBLE SERIES: The Jazz Combos with Jeffrey Lemke, coordinator, will perform at 8 p.m. April 6 in the Fine Arts Recital Hall.

BASEBALL: Team will play Iowa State at 7 p.m. April 8 at Simmons Field. Cost: \$1 students, \$2 faculty, staff and public.

BANQUET: The College of Education's Alumni Awards Banquet will be held at 6:30 p.m. April 9 in N201-202 Memorial Union. Call 882-5118.

5 Tuesday

INTRAMURALS: Entries will close today for women's tennis singles and co-rec tennis doubles. Play will begin April 12 for both. To register stop by 106 Rothwell Gymnasium or call 882-2066. Men's wrestling will begin today at 6 p.m. in the Hearnes Center.

STAFF FOR LIFE WELLNESS PROGRAM: "Kid Stuff," a series of classes on child-health issues, including CPR for infants and children, will meet through April 19 in 315 Dockery Hall. Cost: \$15. Call Kate Dunn at 882-4161.

EMPLOYEE DEVELOPMENT SEMINAR: Dean Baxter, staff development specialist, will speak on "Follow My Orders Exactly: Work Assignment" from 9 a.m.-4 p.m. in 146 Heinkel Bldg. Call 882-4859.

STAFF RECOGNITION WEEK: "Shop for Health at the Staff for Life Health Market," an educational session featuring health-care information and healthy snacks, will be held from 11 a.m.-2 p.m. in N201-202 Memorial Union.

STAFF RECOGNITION WEEK: Mike Paden, director of UM Employee Benefits, will present a benefits program from noon-1 p.m. in S206 Memorial Union.

BASEBALL: Team will play a doubleheader against Missouri Western at 5 p.m. at Simmons Field. Cost: \$1 students, \$2 faculty, staff and public.

POETRY READING: Edward Hirsch, associate professor of English at the University of Houston, will read at 7:30 p.m. in Memorial Union's Faculty-Alumni Lounge.

PRESENTATION: Graphics artist Michael McCurdy will present an illustrated lecture on his work at 8 p.m. in Ellis Aud.

6 Wednesday

CONFERENCE: "The Seventh Symposium-Plant Biochemistry and Physiology" will be presented through April 8 in Memorial Union. Call 882-4349.

EMPLOYEE ORIENTATION: Event will be held from 9-11:30 a.m. in the Education and Development Center, 146 Heinkel Bldg.

TAP DAY: See Highlights.

STAFF RECOGNITION WEEK: A fashion show, "Office Update and Summer, Can't Wait!," will be held from noon-1 p.m. in N201-202 Memorial Union.

MIDDAY GALLERY TALK: Katrina Everhart, a graduate student in education, will present "Museums in the Classroom" at 12:25 p.m. in 1 Pickard Hall.

PSYCHIATRY COLLOQUIUM: Raymond Prince, professor of psychiatry at McGill University in Montreal, will speak on "Exogenous and Endogenous Factors in Psychotherapy" at 1 p.m. in the Truman Veterans Hospital Aud.

SEMINAR: "Swedish Social Policy After the Crisis of the Welfare State" will be presented by Sven Erland Olsson, Fulbright visiting lecturer, at 3 p.m. in 106 Pickard Hall.

PROVOST: Provost Lois DeFleur will hold open office hours for faculty, staff and students from 3-5 p.m. in 114 Jesse Hall.

WOMEN'S CENTER: Rosemary Whitacre,

puppeteer and story teller at KOPN, will speak on "The Rabbit that Sang for Snow" at 7 p.m. in 299 Brady Commons.

MSA FILM: "All That Jazz," rated PG, will be shown at 8 p.m. in Ellis Aud. Cost: \$1.

STUDENT ENSEMBLE SERIES: See Highlights.

7 Thursday

NURSING SEMINAR: "Nursing Research Using Self-Care Theory: Building a Foundation for Theory-Based Nursing" will be presented by Mary Collette Smith of the University of Alabama through April 8 in the School of Nursing. Call 882-0216.

CONFERENCE: "Wellness Through the Ages" will be presented through April 8 in N201-202 Memorial Union. Cost: \$10 faculty and staff, \$50 professionals. Call 882-4105.

EMPLOYEE DEVELOPMENT SEMINAR: Wayne Duncan, assistant director of Printing and Records Management Services, will speak on "Records Management" from 9 a.m.-noon in 146 Heinkel Bldg. Call 882-4859.

SEMINAR: Arthur Spector of the University of Iowa will speak on "Role of Polyunsaturated Fatty Acids in Endothelial Cell Function" at 10:40 a.m. in the Nursing School Aud.

STAFF RECOGNITION WEEK: Karla Hughes, associate professor of human nutrition, foods and food systems management extension, will present "Nutrichat," a computerized dietary analysis program, from 11:30 a.m.-1 p.m. in S3 Memorial Union. Keep track of the food you eat during the previous 24 hours. The program will show you the calories and nutrients in the food you eat.

STAFF RECOGNITION WEEK: Scottie Rawlings, dietitian at University Hospital and Clinics, will present "Microwave and Quick Dish Cooking" from noon-1 p.m. in S206 Memorial Union.

WOMEN'S CENTER: Betty Wilson, local attorney, will speak on "In the Best Interest of the Children" at noon in 229 Brady Commons.

WELLNESS THROUGH THE AGES: Steven Zweig, assistant professor of family and community medicine, will discuss "Wellness and Prevention: A Developmental Approach" at 1 p.m. in N201-202 Memorial Union.

WELLNESS THROUGH THE AGES: David Imig, associate professor of child and family development, will discuss "Promoting Wellness Through Positive Self-Concept" at 1:45 p.m. in N201-202 Memorial Union.

STUDENT ENSEMBLE SERIES: The Percussion Ensemble will perform at 2:40 p.m. in the Fine Arts Recital Hall.

WELLNESS THROUGH THE AGES: Dan A. Smith, exercise specialist at Boone Hospital Center, will discuss "Adolescent Fitness and Exercise" at 2:45 p.m. in N201-202 Memorial Union.

LECTURE: James Curtis, professor of Russian, will present "Chekhov and Recent Research on the Psychology of Creativity" at 3:40 p.m. in 114 General Classroom Bldg.

FACULTY COUNCIL: Group will meet at 3:40 p.m. in S110 Memorial Union.

WELLNESS THROUGH THE AGES: A fun run/walk on the MKT trail and aerobics in Rothwell Gymnasium will begin at 4:15 p.m.

WELLNESS THROUGH THE AGES: Jim Bakken, athletic director at St. Louis University, will discuss "Wellness Throughout the Life Cycle" at 8 p.m. in N214-215 Memorial Union.

8 Friday

WELLNESS THROUGH THE AGES: George Sheehan, a cardiologist, will discuss "Lifestyle, Longevity and Peak Performance" at 9 a.m. in N201-202 Memorial Union.

BOOK SALE: The Friends of the Libraries annual book sale will be held through April 9 in the east concourse of the Hearnes Center. Admission is \$4 from noon-1 p.m. April 8, and free from 1-9 p.m. April 8 and from 9 a.m.-4 p.m. April 9.

UNIVERSITY Y: Jugglefest '88 will be held through April 10 in Brewer Fieldhouse. A

public show will be at 8 p.m. April 9 in Townsend Hall.

WELLNESS THROUGH THE AGES: Scottie Rawlings, clinical dietitian at University Hospital and Clinics, will discuss "L.E.A.N. for Life" at 11 a.m. in N201-202 Memorial Union.

SEMINAR: "The Production Team Approach to Successful Videoconferencing" will be presented from 12:30-3:30 p.m. at the Academic Support Center, 505 E. Stewart Road. Call 882-2854.

MEETING: The mid-Missouri chapter of the Society for Neuroscience will have its annual meeting at 1 p.m. in 331 Hearnes Center. Paul Cheney of the University of Kansas will speak on "Brain Control of Movement: Old Problem, New Solutions."

MISSOURI INSTITUTE OF PSYCHIATRY: Ekkehard Othmer, professor of research and clinical affairs at the University of Kansas, will speak on "Somatization Disorders" from 1-3 p.m. at the Kohler Bldg. Aud., St. Louis State Hospital Complex, 5400 Arsenal St., St. Louis.

WELLNESS THROUGH THE AGES: Phil Bruska, national shotput champion of the Senior Olympics, will discuss "How to Remain Active and Competitive Through the Ages" at 1:15 p.m. in N201-202 Memorial Union.

WELLNESS THROUGH THE AGES: Parris R. Watts, director of the Total Person Program, will discuss "How Not To Be Your Own Worst Enemy: Wellness Alternatives to Abusive Behavior" at 2 p.m. in N201-202 Memorial Union.

STAFF RECOGNITION WEEK AWARDS CEREMONY: Service-award recipients and special award winners will be recognized at event to be held from 2-4 p.m. in Jesse Aud. A reception will follow.

ENTOMOLOGY SEMINAR: William Rice of the Biological Control of Insects Research Laboratory will speak on "Genetic Engineering of the Baculovirus HzSNPV as a Viral Insecticide" at 2:40 p.m. in 2-6 Agriculture Bldg.

FORESTRY SEMINAR: "United Kingdom - Environmental Issues" will be presented by David Ervin, associate professor of agricultural economics, at 2:40 p.m. in 2-10 Agriculture Bldg.

CHEMISTRY COLLOQUIUM: Paul Wender of Stanford University will speak at 3:40 p.m. in 103 Schlundt Hall.

BASEBALL: See Highlights.

MSA FILM: "Hope and Glory," rated PG-13, will be shown at 7 and 9:30 p.m. in Ellis Aud. Cost: \$2.

STUDENT ENSEMBLE SERIES: The University Philharmonic, with Edward Dolbashian conducting, will perform at 8 p.m. in Jesse Aud.

SEE THE STARS: Weather permitting, the Laws Observatory on the roof of the Physics Bldg. will be open from 8-10 p.m.

9 Saturday

WELLNESS RUN: Residential Life will co-sponsor a Wellness Week Run with registration at 8:30 a.m. A 1.3-mile run/walk will begin at 9 a.m. and a 5-mile run will start at 9:20 a.m. in front of Gillett Hall. Cost: \$3 students, \$4 faculty, staff and public in advance; or \$4 students, \$5 faculty, staff and public at race.

MSA CRAFT STUDIO: A workshop on picture frames will be held from 10 a.m.-1 p.m. and a workshop on tie-dye fabric will be held from 10 a.m.-2:30 p.m. in 203 Brady Commons. Cost: \$6.50 for each.

WOMEN'S CENTER: Meg Haycraft, a psychotherapist in St. Louis, will present "The Dependency Trap" from 1-4 p.m. in 229 Brady Commons. To register call 882-6549.

DEDICATION: The Bob G. Woods Conference Room will be dedicated from 2-4 p.m. in 111 Hill Hall.

BASEBALL: Team will play a doubleheader against Iowa State at 4 p.m. at Simmons Field. Cost: \$1 students, \$2 faculty, staff and public.

BANQUET: See Highlights.

MSA FILM: "Hope and Glory," rated PG-13, will be shown at 7 and 9:30 p.m. in Ellis Aud. Cost: \$2.

MSA FILM: "Rocky Horror Picture Show," rated R, will be shown at midnight in Ellis Aud. Cost: \$2.

10 Sunday

HOME ECONOMICS WEEK: Opening ceremonies and honors assembly will begin at 2:30 p.m. in Memorial Union Aud. For complete schedule of the week's events, which continue through April 15, call Martha Jo Martin at 882-6616.

BASEBALL: Team will play Iowa State at 1 p.m. at Simmons Field. Cost: \$1 students, \$2 faculty, staff and public.

11 Monday

INTRAMURALS: Play will begin today for men's dart throwing.

EQUAL OPPORTUNITY AWARENESS WEEK: Event will continue through April 15.

ACCESS AWARENESS AWAKENING WEEK: Event will continue through April 16. Call 882-4696.

SMOKING POLICY OPEN FORUM: Faculty, staff and students will have a chance to review the proposed policy and suggest changes at the 11:30 a.m.-1:30 p.m. meeting in S203 Memorial Union.

BIOLOGICAL SEMINAR: Duane Anderson, a graduate student, will speak on "Life History, Reproductive Biology and Growth Rates for Three Missouri Mussel Species" at 11:40 a.m. in 207 Tucker Hall.

ACCESS AWAKENING WEEK: Carma Messerli, coordinator of the Access Office for Students with Disabilities, will speak on "At Ease Meeting People with Disabilities" at noon in 229 Brady Commons.

JAZZ ON THE MALL: The Singasons will perform from noon-1 p.m. on Lowry Mall.

SEMINAR: "Transgenic Immunoglobulin Genes: Chromatin Structure and Its Implication in Gene Regulation" will be presented by Stephen Rose of the University of New Mexico at 1:40 p.m. in M640 Medical Sciences Bldg.

ACCESS AWAKENING WEEK: "Independent Living," a presentation on how people with physical impairments live independently, will be presented at 2 p.m. in 234 Brady Commons.

BIOCHEMISTRY SEMINAR: Abraham Eisenstark, professor of biological sciences, will speak on "Is Superoxide Dismutase Necessary for Aerobic Life" at 3:30 p.m. in 322 Chemistry Bldg.

CHEMICAL ENGINEERING SEMINAR: The department will hold a seminar at 3:40 p.m. in 1034 Engineering Bldg.

STUDENT ENSEMBLE SERIES: The Women's Chorus, with David Junker conducting, will perform at 8 p.m. in the Fine Arts Recital Hall.

12 Tuesday

INTRAMURALS: Play will begin today for co-rec tennis doubles and women's tennis singles.

EMPLOYEE DEVELOPMENT SEMINAR: Lonnie Echternacht, associate professor of practical arts and vocational-technical education, will lead a seminar on "Teamwork" from 9 a.m.-4 p.m. in 146 Heinkel Bldg.

JAZZ ON THE MALL: The Jazz Combos will perform from noon-1 p.m. on Lowry Mall.

WOMEN'S CENTER: Denise Wilfley, a doctoral candidate in counseling psychology, will speak on "Risk Factors in the Development of Eating Disorders" at noon in 229 Brady Commons.

ACCESS AWAKENING WEEK: A workshop on wheelchair maintenance will be held from 1-4 p.m. in S3 Memorial Union.

SMOKING POLICY OPEN FORUM: Faculty, staff and students will have a chance to review the proposed policy and suggest changes at the 3:30-5:30 p.m. meeting in S203 Memorial Union.

HOME ECONOMICS LECTURE: Bertha Gilkey, a proponent of tenant power in public housing, will speak on "Public Housing and Tenant Management" at 3:40 p.m. in Memorial Union Aud.

CHEMISTRY COLLOQUIUM: "Electrides" will be presented by James Dye of Michigan State University at 3:40 p.m. in 103 Schlundt Hall.

PHARMACOLOGY SEMINAR: S.D. Shukla, assistant professor of pharmacology, will discuss "New Roles of Phosphatidylinositol in Anchorage of Membrane Proteins" at 3:40 p.m. in M558 Health Sciences Center.

FRENCH THEATER SYMPOSIUM: "Politics and Policies in the French Theater World Today" will be presented at 8 p.m. in N222-223 Memorial Union.

FACULTY RECOGNITION: Awards ceremony will be held at 4 p.m. in Memorial Union Aud.

University Libraries
University of Missouri

Digitization Information Page

Local identifier MizzouWeekly(print)

Source information

Format Newspaper
Content type Text with images
Source ID Duplicate copies University Archives weeded out
Notes

Capture information

Date captured July-December, 2022
Scanner manufacturer Plustek OpticBook
Scanner model A300 Plus
Scanning system software Book Pavilion
Optical resolution 600 dpi
Color settings 8 bit grayscale for majority of pages;
 24 bit color for color illustrations/portraits/photographs
File types tiff
Notes

Derivatives - Access copy

Compression Tiff: LZW compression
Editing software Adobe Photoshop 2022
Resolution 600 dpi
Color same as captured
File types pdf created from tiffs
Notes Images cropped, straightened, and brightened.