



Rural Development Literature 1976-1977: An Updated Annotated Bibliography

Shirley Buzzard

MP 511 7/78/3M

Extension Division, University of Missouri-Columbia

Publication of this bibliography was a cooperative effort between the Department of Regional and Community Affairs, University of Missouri-Columbia and the North Central Regional Center for Rural Development, Iowa State University, Ames, Iowa.

Projector Director

James B. Cook

Assistant Professor

Department of Regional and Community Affairs

College of Public and Community Services

University of Missouri-Columbia

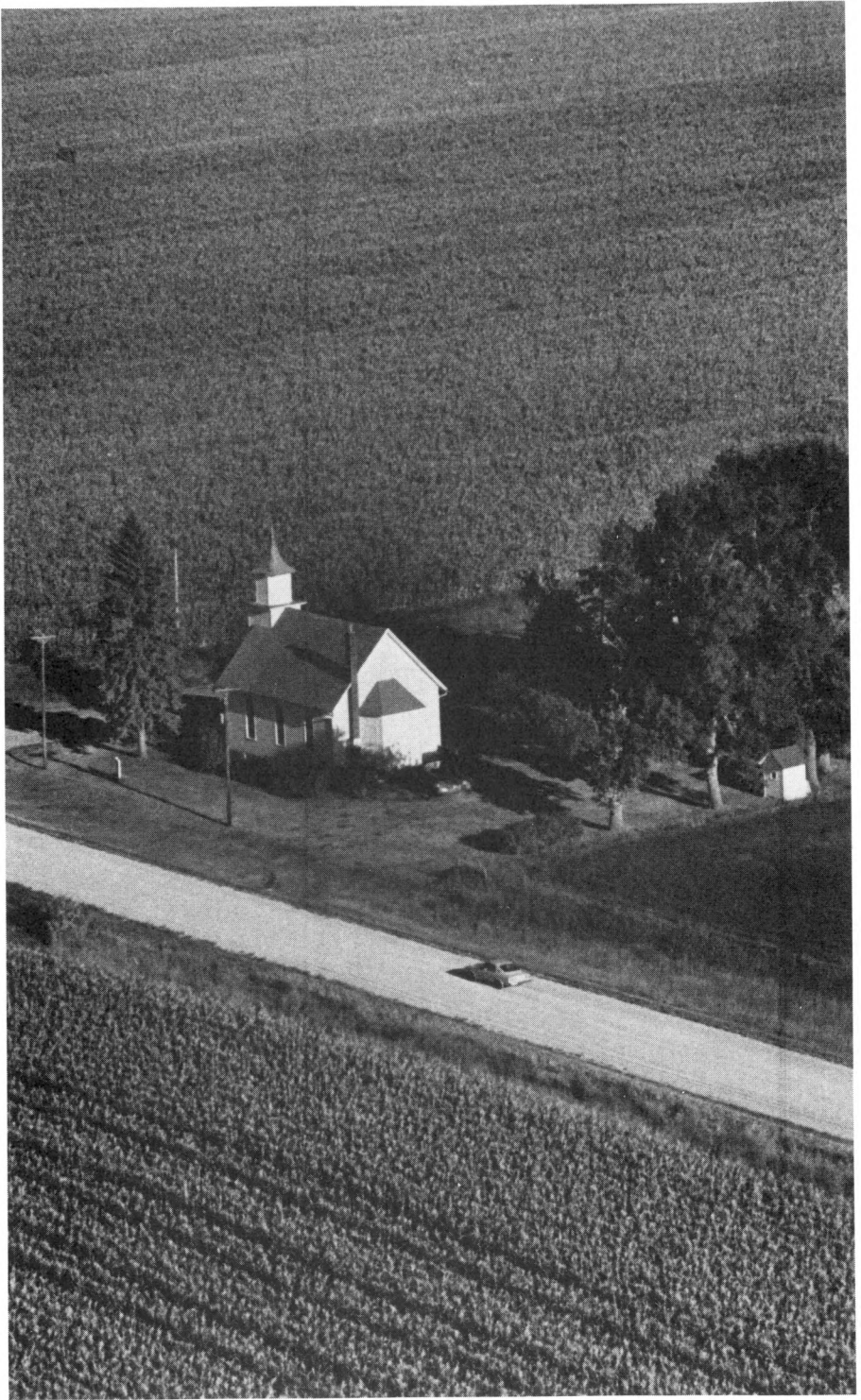
Photos by Duane Dailey

Rural Development Literature
1976-1977: An Updated
Annotated Bibliography

Shirley Buzzard
Department of Anthropology
The American University

Department of Regional and Community Affairs
College of Public and Community Services
and
Extension Division
University of Missouri-Columbia

April, 1978





Introduction

In the last two years, social scientists and allied professionals have published considerable material on rural development in the United States. However, authors in this field are associated with a wide variety of disciplines, including Agricultural Economics, Anthropology, Community Development, Community Health, and Rural Sociology. As a result, the current literature is spread over a wide range of journals and publications.

For academicians and those concerned with rural development policies and programs, keeping up with research and ideas reported in the professional literature is difficult. Under the circumstances, an up-to-date bibliography, that cuts across the standard disciplinary lines, is a particularly useful and time conserving tool.

This bibliography is designed to provide timely help. It is an update concerned only with the works published during 1976 and 1977. Currently, several bibliographies are available

on books and articles published in 1975 and prior years.¹

This bibliography is selective, and is intended to concentrate on social science literature. However, in the search and selection process "social science" was broadly defined.

The types of works specifically excluded are:

- Technical Agriculture,
- descriptions of special programs and research restricted to limited geographic areas without broader implications,
- presentations of purely demographic data on rural to urban migration, and
- government publications primarily informational in nature.

Judgement was involved in applying these categories for exclusions. Therefore, included are some studies of specific programs in limited areas. In those cases, the connection with issues beyond the specific program, in the opinion of the investigator, were fairly clear.²

Articles presenting data on rural to urban migration were excluded. For years research has concentrated on the shifts of population to urban areas. With a few notable exceptions, authorities seemed to accept the idea that depopulation of rural America would continue until no one was left but a handful of farmers working the open spaces.

The new element in rural development literature gives attention to the reversal of this pattern, the significant migration from urban to rural areas. A number of articles

¹Five bibliographies related to rural development were published in 1976. These are cited and annotated below. Two of these are general. Parker, Ladwig and McLean (1976) lists works by topic. Southern Rural Development Center (1976) is briefly annotated. The other three are specialized. Smith (1976) focuses on industrialization of rural areas and Kale (1976) emphasizes manufacturing. Mark (1976) is limited to sociological works, particularly empirical studies and research reports. Only some chapters in Mark are directly related to rural development.

²For example Reynolds, Banks and Murphree (1976) is a study of a particular community health program in a Florida County, but provides insights about health patterns in rural areas.

cited below deal with aspects of rural population growth.³

Government publications are not totally excluded. Several are annotated in this bibliography. These were judiciously selected as publications comparable to the type of materials represented in other entries. Restricting the number of government publications may result in overlooking some articles or publications that merit inclusion in a bibliography of social science writings on rural development. However, this procedure avoids cluttering the list with citations that are primarily informational or promotional in nature. On balance, placing a limitation on the selection of government publications helps to keep the bibliography concise, without substantial loss in coverage of the professional literature.

In works of this kind, particularly with the dispersal of writings among so many sources, there are bound to be some oversights. The effort was made to find virtually every article and book on rural development published during 1976 and 1977. This involved inspection of over fifty professional journals as well as *Sociological Abstracts*, *Development Abstracts*, and *Books in Print*. The search was thorough enough to ensure the bibliography accurately reflects the new literature, and includes almost all relevant works concerned with rural development policy issues that are reasonably accessible to researchers.

The bibliography aids in searching the recent literature for specific content. Beyond that, a complete reading will help in developing a general picture of the existing state of research and inquiry in rural development. Considered as a whole, the bibliography gives strong indication of the range of issues receiving attention. It also exposes some of the specific questions on the public agenda that are being addressed without benefit of substantial research or factual information.

Every effort was made to keep the annotations objective but evaluative comments on the content or style are included when considered helpful. Although there is some risk involved, inclusion of subjective comments helps both the readability and the utility of the bibliography.

³Campbell and Johnson (1976) reviews the literature on the urban to rural migration and the need for research on this phenomenon. A work that was published in 1975, therefore not cited below, provides over 1,200 references to research on migration. It is: Daniel O. Price, and Melania Sykes, *Rural-Urban Migration Research in the U.S.: An Annotated Bibliography and Synthesis* (Bethesda, MD: National Institute for Human Development, Center for Population Research, 1975).

The entries are organized alphabetically by last name of the first author. A topical index is provided. There are 31 headings in the index and every citation is listed under at least one category. Many are cross-referenced under more than one subject. This feature will make it easier to use as a reference.

This bibliography is restricted to works that are pertinent to rural development in the United States. It does not deal with the extensive literature about rural development in the nations of the Third World. The few citations with an international flavor were selected because of aspects which gives them relevance to the American situation.



Citations

A

ALMY, S.W.

"Anthropologists and Development Agencies." *American Anthropologist*. 79 (1977): 280-292.

As government begins to emphasize integrated approaches to rural development, the author believes the anthropologist can be more useful to development agencies, and at the same time continue to do anthropology. Many agencies, however, do not think of anthropologist as possible staff members. The author feels this is a failure on the part of both the agency, for not using this resource, and the profession, for not training its members to do non-academic research.

AMERICAN MEDICAL ASSOCIATION, COUNCIL ON RURAL HEALTH.

Health Care Delivery in Rural Areas. Chicago: American Medical Association, 1976.

This overview of the AMA model health program for rural areas includes a description of personnel, types of services, and funding methods. The relations with other nearby health services and facilities such as medical and dental schools and health planning agencies are an important part of a good health program. Several projects are described. This booklet is designed to be used by citizens in assessing and planning their community's health program.

ANGROSINO, MICHAEL V.,

"Do Applied Anthropologists Apply Anthropology?" *Southern Anthropological Society Proceedings, Number 10*. Athens: University of Georgia Press, 1976.

Yes, applied anthropologists do apply anthropology, when given the chance. Most anthropologists are full or part-time academicians and many work part time as consultants in planning, medicine, and community development, but the article says they make little input at the policy level. The concepts of social organization and culture change, the special research skills of anthropologists, and the "people" orientation makes anthropology valuable to rural development in a number of ways. However, this article suggests there is a communication problem. Most agencies do not know what anthropologists do and consequently do not know what they can offer in the way of theory, practice and skills.

AYER, HARRY W., AND WEIDMAN, JOE.

"The Rural Town as a Producing Unit: An Empirical Analysis and Implications for Rural Development Policy." *Southern Journal of Agricultural Economics*. 8(1976): 79-86.

Using the town as an economic unit, the authors argue for policies which increase education of the labor force, encourage more labor in manufacturing and service industries, and increase utility capital to support these industries. They expect such policies will favor larger rural towns. They also contend that policies encouraging additional mining or construction industries, expansion of industrial property, programs to foster growth of isolated communities, and programs which encourage recreation based enterprises are of questionable value in stimulating rural town vitality.

B

BAKER, KEITH; GLASSO, MYFANWAY; GOYETTE, DON; AND SPRAGUE, C. FREEMONT.

Comprehensive Services to Rural Poor Families: An Evaluation of the Arizona Job Colleges Program. New York: Praeger, 1976.

An evaluation of a specific program--Arizona Job Colleges (AJC)--for comprehensive residential family rehabilitation services to serve the rural poor. It includes brief descriptions of five other operating programs around the country similar to AJC, and illustrates some of the difficulties faced in attempts to provide integrated or comprehensive social services to poor family units in sparsely settled rural areas. The results of the evaluation are mixed, though the authors conclude AJC seems fairly successful. The book serves to point up the complexities of providing social services in rural areas, and the issues arising from the differences in philosophies and approaches within antipoverty programs.

BEALE, CALVIN.

"A Further Look at Non-Metropolitan Population Growth Since 1970." *American Journal of Agricultural Economics* 58 (1976): 953-958.

Data on population shifts are given and implications discussed. For example, one problem is that rural people use considerably more gasoline per capita and have fewer public transportation options than urban dwellers. If there is another oil embargo or severe fuel shortages, it could create very serious emergencies in rural areas. The author thinks social scientists have concentrated on rural to urban migration, and are not giving adequate study to present reverse trends.

BELSHAW, CYRIL.

The Sorcerer's Apprentice: An Anthropology of Public Policy.
New York: Pergamon Press, 1976.

This is an effort to bring anthropology to the public and to policy makers by discussing what might be, rather than what is empirically known. The structure of society, cultural change, and the role of social sciences in development and planning are discussed. The author feels social scientists must learn to make choices based on values and come to grips with the political side of development. This book is different from most in the field since it presents anthropology in its non-academic role.

BERGER, PETER L.

Pyramids of Sacrifice: Political Ethics and Social Change.
Garden City, N.Y.: Anchor Books, 1976.

This book discusses the political ethics of social change. Although it deals most specifically with change in Third World countries, the ideas apply equally to those plotting policy for people in any area and especially for rural areas in the U.S. The book discusses various development theories, the decisions which must be made regarding changes in communities and cultures, and the ethical implications of change. At what point does development cause social disorganization to an undesirable level? Who decides what that point is?

BISSELL, KATHRYN A.

The Migrant Farmworker. Washington D.C.: Catholic University, Institute for Multi-disciplinary Graduate Research, 1976.

This is a "discussion" workbook with a summary of information on the history of migrant labor, sociological data on migrants, and a brief look at the culture, psychological characteristics, political, legal and economic aspects of migrant workers. The workbook provides suggested discussion questions. The Farm Workers Corporation is described briefly.

BLAKE, BRIAN F.; KALB, NED; AND RYAN, VERNON.

"Citizen Opinion Surveys and Effective CD Efforts." *Journal of Community Development Society*. 8(1977): 92-104.

A critique of four kinds of goals often associated with citizen opinion surveys at the community level. The authors discuss procedures they consider appropriate to accomplish each of the several objectives. They observe that approaches supporting attainment of one goal may work against reaching others, and suggest that a search for "all purpose" procedures is pointless. This article is relevant to rural development since community surveys have become one of the standard techniques in development efforts in small communities.

BOWMAN, GEORGE A.

Land Use: Issues and Research Needs for Planning, Policy and Allocation. Pullman Wash.: Washington State University College of Agriculture, 1976.

This is a report of a task force from the National Planning Committee and the Agriculture Research Policy Advisory Committee organized to identify issues of land use planning requiring further research. The report identifies six areas of concern: agricultural, forest and range lands; energy development land, such as mines and oil fields; rural-urban transition areas; and finally, how decisions are to be made about effective coordination of land use.

BREIMYER, HAROLD F.

"The Changing American Farm." *The Annals*. 429(1977): 12-22.

This article contends that, although the American farm has never been as homogeneous or as stable as it might seem, there has been an historic emphasis on fee simple ownership by operating proprietors. This is attributed to the values placed on managerial independence and status. There is now an increased dependence on non-farm inputs with increased specialization, e.g. growing detachment of livestock and poultry farms from crop growing. The most viable unit may be the part time farm or the retirement farm. Lacking a national policy, there are no clear directions for the future of part time farming.

BROWNING, GRACE A.

Rural Public Welfare. New York: Arno Press, 1976.

The roots of social welfare in rural areas developed out of the depression of the 1930's. This social work case book presents a striking variety of situations ranging from racial and ethnic problems to illegitimacy. A second section, illustrated with case materials, shows the overlapping roles of the family, the church and the school, and how these resources can be used in solving some problems.

C

CAMPBELL, ANGUS; CONVERSE, PHILLIP E.; AND RODGERS, WILLARD L.

The Quality of American Life: Perceptions, Evaluations and Satisfaction. New York: Russell Sage, 1976.

This is an effort to evaluate a technique and establish a base line of what adult Americans need to be happy. They found that people are generally content and, in those cases where they are not, it has little to do with poor physical living conditions. Happiness is more related to marital happiness and those things not manipulable by government policy.

CAMPBELL, REX R., AND JOHNSON, DANIEL M.

"Propositions on Counterstream Migration." *Rural Sociology*. 41 (1976): 127-145.

The primary focus of migration has been rural to urban. This article reviews the literature on urban to rural migrants. Although there has been very little research on urban to rural migrants, there are a few studies of returnees. The authors demonstrate the need for further research and indicate some possible directions for that research.

CAPENER, H.R. AND BERKOWITZ, A.

"Farm Families: Variations in Attitude, Style and Structure." *New York's Food and Life Sciences Quarterly*. 9(1976): 9-11.

Since rural living synthesizes many of the components of family and occupational roles found in urban families, the authors say it is important to consider the family as a unit when planning for rural areas.

CARPENTER, EDWIN A.

"The Potential for Population Dispersal: A Closer Look at Residential Location Preferences." *Rural Sociology*. 42 (1977): 352-370.

Seventy-five percent of Americans prefer to live in a town with a population of under 50,000, but would like the small town to be within thirty miles of a city. The author found only nineteen percent of the people want to be more than thirty miles from a city of 50,000. Increased occupational opportunities, particularly in the service professions, he contends, now make it possible for people to live wherever they want. Increased affluence and the interstate highway system, along with better communications in rural areas, make living out of the city even more attractive, since they reduce the serious draw-backs of living in small towns.

CHERRY, GORDON E., ed.

Rural Planning Problems. New York: Barnes and Noble Import Division, 1977.

This book was first published in Great Britain by Leonard Hill (1976), and deals with the situation in the United Kingdom. In style and illustrations it is thoroughly British, but does deal with many of the same topics of interest in American rural planning, e.g. settlement patterns, housing, employment, recreation, and tourism. This exposure to the British experience allows comparisons and contrasts to be drawn which broaden the perspective in planning for rural development in the United States.

CLARENBACK, KATHRYN.

Education Needs of Rural Women and Girls. Washington, D.C.: National Advisory Council on Women's Educational Programs, 1977.

A report of a major investigation into the educational needs of rural women, including native Americans, Mexican Americans, rural blacks and other groups with special problems. A number of recommendations are made including the importance of having programs designed for the special needs of the target group. This booklet also contains a summary of current national programs and a bibliography.

CLAWSON, MARION.

"Economic Implications of Recent Population Shifts Toward Rural Areas." *American Journal of Agricultural Economics.* 58 (1976): 963-966.

The author predicts that there will be political effects with the changes in population that increase demands for services in rural areas. Recent migrants to small towns cause changes in the social structure, and tensions may develop between newer and older residents of communities.

COBB, MARY.

"West Virginia Tackles Low-income Housing Needs Via State Coordinated Production and Delivery System." *Journal of Housing.* 1(1977): 12-17.

The author describes West Virginia's efforts to coordinate state, local, and federal programs to provide housing to over 80,000 families. The program involved setting up five factories to produce panelized houses.

COCHRANE, GLYNN, ed.

What We Can Do For Each Other: An Interdisciplinary Approach to Development Anthropology. Amsterdam: B.R. Gruner, 1976. Distributed in the United States by Stechert Macmillan, New York.

Economic development requires input from several disciplines including economics, anthropology, sociology, political science, agriculture, engineering, and law. This book suggests the communication problem among these disciplines exists because there is no comprehensive theory of social change on which to base development strategies. It takes the position that development strategy should be comprehensive and include plans for coordination at the international, as well as state and local levels. Articles in the book criticize the standard economic models of development. Anthropologists are urged to communicate more with government personnel to learn the method and structure of agencies so that input can be more effective.

COHEN, RICHARD

"Small Town Revitalization Planning: Case Studies and Critique." *Journal of the American Institute of Planners*. 43 (1977): 3-12.

Small towns have not done well in community development programs, this article says, because often there is resentment of outsiders and their programs. Very small towns in particular are likely to exhibit such resentment. This article concludes that successful development is based on the resident's recognition of problems and potentials, and on setting their own goals.

COOPER, JAMES K.; HEALD, KAREN; AND SAMUELS, MICHAEL.

"Affecting the Supply of Rural Physicians." *American Journal of Public Health*. 67 (1977): 756-759.

A survey of physicians indicates that the factors which most influence them to practice in rural areas are the proximity of other physician specialists, access to medical schools, and continuing education programs, i.e. they want urban conditions. Persons raised in rural areas are far more apt to be interested in a rural practice. The study concludes that the best way to get more physicians into rural areas is to train more people with rural backgrounds.

COPPEDGE, ROBERT O. AND DAVIS, CARLTON, G.

Rural Poverty and Policy Crisis. Ames, Iowa: Iowa State University Press, 1976.

This book is a comprehensive look at the problems of rural poverty. It presents statistics which illustrate the severity of the problem and the economic and social costs to the country as a whole. Alternative theoretical approaches are outlined and a concluding section discusses programs and the role of the university and the government in future policy and programs.

COSBY, ARTHUR G; WETHERILL, G. RICHARD; AND LADEWIG, HOWARD.

"Evaluating Title V: Observations and Comments." *Rural Development Research and Education*. 1(1977): 13-14.

The authors say agencies responsible for evaluation have not created an overall system for evaluating programs under the Rural Development Act of 1972. They argue that a special evaluation unit of U.S. Department of Agriculture should be established. This would permit grants and contracts for evaluation to be made on a competitive basis and encourage a wide range of evaluative activities.

COTERA, MARTHA.

Profile of Mexican-American Women. Publication No. EC-037. Austin, Texas: National Education Laboratory Publishers, 1976.

The Mexican-American woman, frequently described by stereotype or myth, is here described as a human being. Using information from newspapers, her own writings, lesser known publications, and research, the author gives the history of the Chicana as a background for her profile of the contemporary woman. As migrant worker, family member, and activist the Mexican-American woman has not been given the attention she deserves. This book describes some of the problems and achievements in education, housing, employment, and other areas.

D

DABERKOW, S.G.; AND KING, G.A.

"Response Time and the Location of Emergency Medical Facilities in Rural Areas: A Case Study." *American Journal of Agricultural Economics.* 59(1977): 467-477.

An economic analysis of a health care system in northern California suggests one approach to regional medical planning, particularly for remote areas. The methods described can provide a framework for both analysis of an area and evaluation of a system in operation.

DEJONG, G.F.; AND HUMPHREY, C.R.

"Selected Characteristics of Metropolitan to Non-Metropolitan Area Migrants: A Study of Population Redistribution in Pennsylvania." *Rural Sociology.* 41(1976): 526-538.

Migrants to rural areas from the cities are selective. They are younger, have higher socio-economic status, and smaller families than the general population. This trend is made possible by increased employment opportunities in non-metropolitan areas.

DEJONG, G.F. AND SELL, R.R.

"Population Redistribution, Migration and Residential Preferences." *The Annals*. 429(1977): 130-144.

For the first time in 50 years, there is higher population growth and net immigration to non-metropolitan areas, even in remote areas. The authors contend that longitudinal studies of population dispersal indicate that the primary factor in migration is not the preference for small towns and the countryside. Rather, it is the migrants willingness to give up urban conveniences such as shopping, transportation, and employment options. This migration will probably continue for the next few years unless energy problems become more severe.

DILLMAN, DON A. AND TREMBLAY, KENNETH R., JR.

"The Quality of Life in Rural America." *The Annals*. 429 (1977): 115-129.

This article suggests that attempts to measure the quality of life in rural areas have gone through three stages: 1) economic measures, 2) an array of "objective" indicators, and 3) subjective evaluations. Although rural people have much worse economic conditions and relatively poor services, they evaluate their lives as being better than those who live in urban areas do. Changes in the population and resource scarcity are likely to have negative effects on the quality of life in rural areas.

DOEKSEN, GERALD A.

"Emergency Medical Service in Rural Areas--Who Can Afford It?" *Rural Development Research and Education*. 1(1977): 4-5.

A brief article on the economics and availability of ambulance services in sparsely populated rural areas. Price estimates for various types of equipment are given.

DUNBAR, TONY AND KRAVITZ, LINDA

Hard Traveling: Migrant Farm Workers in America. Cambridge, Mass.: Ballinger Publishing Co., 1976.

Presents an overview of migrant life with chapters on labor conditions, the law, children, and the economics of agribusiness. Includes comments on current programs for migrants and suggestions for new programs.

E

EDWARDS, CLARK (a).

"The Political Economy of Rural Development: Theoretical Perspectives." *American Journal of Agricultural Economics* 58(1976): 914-921.

Five growth theories are considered. Government programs are based on a number of approaches and proponents of one theory consider those who use others to be misguided. With policy and programs in conflict, there are often adverse side effects for rural economic growth which go unnoticed. Government programs often solve one problem by creating others. Those programs explicitly focused on rural development are fragmented and policy makers have no clear goals or understanding of the impact of existing and proposed legislation. The author believes balanced urban-rural growth is impossible without a unified approach.

_____. (b).

Strategies for Balanced Rural-Urban Growth. Washington, D.C.: U.S. Department of Agriculture, Economic Research Service, 1976.

Seven strategies to balance growth between urban and rural areas are explained. Possible strategies include a decrease in population growth, encouraging migration, expanding capital stock markets, and changes in the labor force and job markets. The author suggests isolated rural development strategies by a single agency or institution are unlikely to succeed because of unwanted side effects.

F

FREMON, SUZANNE ed.

Rural America. New York: H.W. Wilson, 1976.

This history of rural America in the 19th and 20th centuries contains a concluding section, which discuss current shifting patterns in rural areas, "the new ruralism" and rural poverty. The approach is different from that of most historians since the author focuses on individuals and their lives as they work in rural areas. The style makes it very readable.

FRY, CHRISTINE L.

"The Community as a Commodity: The Agegraded Case."

Human Organization. 36(1977): 115-123.

Communities must be considered as commodities since new developments and "planned" communities allow people to purchase a culture along with their lot and house. The author says planned communities are considered good investments, since insecurity is reduced and the risk is minimized. Planned communities can protect themselves from "undesirable elements" and control the image of the area. Purchasers find this homogeneity appealing.

FULLER, ANTHONY M. AND MAGE, JULIUS A.

Part-time Farming: A Problem or Resource in Rural Development? Norwich, England: Geo. Abstracts Ltd. 1976.

These are proceedings from a symposium on part-time farming in which the conference members attempted to identify part-time farmers and assess the problems and resources as related to other types of farming and the policy implications for part-time farming. The first part of this book deals with concepts, the second part with problems, and the final section with policy implications. It suggests that part-time farming may be an important part of development strategy for some declining rural areas and for some developing areas. The authors stress the need to include part-time farmers as a category in policy considerations since they form a large part of the rural population.

G

GERLACH, RUSSELL L.

Immigrants in the Ozarks: A Study in Ethnic Geography.
Columbia, MO.: University of Missouri Press, 1976.

The author presents a settlement history of the Missouri Ozarks with emphasis on three immigrant groups: Germans, "other Europeans", and Amish/Mennonites. Though each group is discussed from a different perspective the dynamics of migration are not given attention.

GESSAMAN, PAUL H.; JANSSEN, LARRY L.; AND MORRIS, GAYLE A.

"Rural Credit System Inadequacy: Fact or Fiction?"
Journal of Community Development Society 8(1977): 81-91.

The authors set out to test the general assumption that the rural credit system is inadequate for development, by examination of several separate, but related, case studies conducted in Nebraska. They found that the rural credit system seems inadequate compared with customary practices in urban areas, but does not appear faulty in the eyes of local borrowers or lenders. The question of credit inadequacy seems to turn on whether it should be judged by local or external standards. The authors suggest Community Development workers should intervene to stimulate adaptations of local criteria for the credit system to bring it, over time, closer to those used outside the community.

GLENN, NORVAL D.; AND HILL, LESTER, JR.

"Rural-Urban Differences in Attitudes and Behavior in the United States." *The Annals.* 429(1977): 36-50.

Attitudes and behavior differ substantially between city and rural people. "Rural" refers to those from small settlements and, to some extent, to those from intermediate sized communities. City residents from rural backgrounds retain rural attitudes. The size of the community of origin is a valuable social indicator (more so than city of current residence). The authors find that age and education are the most useful social indicators but that size of community or origin is as useful as family income or occupation prestige.

GORDON, JOHN; AND DARLING, DAVID

"Measuring Economic Growth in Rural Communities: The Shift-Share Approach." *Southern Journal of Agricultural Economics*. 8(1976): 73-78.

This article describes and discusses a technique for identifying changes which have taken place in the industrial composition of a local town or county economy using a reference area or standard of comparison, such as the state or country as a whole.

GOUDY, WILLIS J.

"Evaluations of Local Attributes and Community Satisfaction in Small Towns." *Rural Sociology*. 42(1977): 371-382.

A survey of 27 Iowa small towns found most people like their community. Communities with strong primary group relations, with local participation, pride in civic affairs, shared decision making, heterogeneous population, and people committed to community upkeep are the most important criteria for satisfaction. These factors account for about 40 percent of the variance in responses.

GUNDLACH, JAMES H; REID, P. NELSON; AND ROBERTS, ALDEN E.

"Migration, Labor Mobility, and Relocation Assistance: The Case of the American Indian." *Social Service Review*. 51(1977): 464-473.

This is a report of a study of relocation assistance to American Indians and compares families of migrants with those of non-migrants. The relocation assistance program was found to be effective way of helping migrants make temporary adjustments. The authors discuss the program and suggest that better training and educational programs might be useful ways of expanding the program.

H

HAMILTON, J.R.; PETERSON, D.V.; AND REID, R.

Small Towns in a Rural Area: A Study of the Problems of Small Towns in Idaho. Moscow, Idaho: University of Idaho, Agricultural Experiment Station, Research Bulletin No. 91, 1976.

Effects of changing technology on small communities where scale and migration may be problems are discussed. A survey of small towns in Idaho shows that although the towns had developed specialized economic bases (recreation, agriculture, mineral resources, etc.) they still had problems, especially with the current energy shortage.

HANSEN, KRISTIN; AND LONG, LARRY H.

"Selectivity of Black Return Migration to the South"
Rural Sociology. 42(1977): 317-331.

Most research on reverse migration suggests that those who migrate are those who fail to adjust to new environments because of low employment qualifications. This study shows that this is not the case with southern blacks. South to north migration rates for blacks is highly correlated with years of education. There is also a high positive correlation between education and return migration. In both cases, the higher educated were likely to go to an urban area. The degree of selectivity appears to be the same during the past 20 years.

HASSINGER, EDWARD W. AND WHITTING LARRY R. ed.,

Rural Health Services: Organization, Delivery and Use. Ames, Iowa: Iowa State University Press, 1976.

This book has chapters on various aspects of health in rural areas including the role of the poverty, lack of education, and other social, psychological and cultural factors. Community considerations effect the location, organization, delivery, and use of health services in rural areas. The editors have included selections on problems and suggested solutions. Four models of varying complexity are presented for area wide planning and the location of health resources. The book seems to emphasize the complexity and scope of the unsolved problems.

HAWKINS, BRETT W.; AND STEIN, ROBERT M.

"Regional Planning Assistance: Its Distribution to Local Governments and Relationship to Local Grant Getting." *Journal of the American Institute of Planners*. 43(1977): 279-288.

A survey of 145 localities determined that regional planning assistance goes most frequently to those localities that have the best local planning capabilities.

HOWE, BARBARA; AND WARREN, PERRY S.

"The Institution Centered Approach to Rural Primary Health Care: A Preliminary Report from New York State." *American Journal of Public Health*. 67(1977): 54-55.

An alternative to the physician-personality in rural medical practice is to organize primary health services through an institution to focus all health services one place. Physicians can then serve for shorter periods of time. This also allows for better auxiliary services, planning, record keeping and makes physician and paramedic recruitment easier.

HUFFMAN, WALLACE E.

"The Value of the Productive Time of Farm Wives: Iowa, North Carolina and Oklahoma." *American Journal of Agricultural Economics*. 58(1976): 836-841.

Although it may be more productive for farm women to devote their time to farm work, most women especially in those states with higher educational levels, prefer non-farm work. The higher a woman's education, the greater is her productivity in non-farm work. Minimum wage laws have the effect of restricting less educated women to farm work.

J

JACOBSON, LARRY G.

"Coping with Growth in the Modern Boom Town." *Personnel Journal*. 55(1976): 288-289+.

A discussion of growth problems of towns in Wyoming, Colorado, and Utah as a result of mineral development. Serious problems of housing and health care have developed. The author suggests that detailed cooperation between industry and state officials as well as with local government is needed to cope with problems of rapid growth.

JANSMA, J. DEAN, AND GOODE, FRANK M.

"Rural Development Research: Conceptualizing and Measuring Key Concepts." *American Journal of Agricultural Economics*. 58(1976): 922-927.

The authors say there is a "knowledge" gap in rural development research. More accurate ways of studying economic activity with special emphasis on spatial input-output models are needed as well as better ways to determine labor force participation if development is to proceed in rural areas. Such indicators as unemployment rates, for example, are difficult to measure in rural areas.

JONES, DELMOS.

"Applied Anthropology and the Application of Anthropological Knowledge" *Human Organization*. 35(1976): 221-229.

Behind most social reform and planning lies a theory of human behavior. An anthropologist working for an agency must discover and analyze the assumptions underlying the plan of action. In a complex, stratified society, it cannot be assumed that public institutions always act in the best interest of all the people. Policymakers do not necessarily resist the use of research data but the anthropologist should consider political pressures to make the best use of his research.

JONES, JAMES D.; WEGNEFELD, MORTON O.; AND ROBIN, STANLEY S.

"A Profile of the Rural Community Mental Health Center." *Community Mental Health Journal*. 12(1976): 1976-1981.

The authors found that mental health workers in rural clinics tend to view their work more from the perspective of community and less from the medical point of view, when compared with their urban counterparts. Questionnaires distributed to over 600 people in 74 rural centers indicate that rural personnel endorse organizational and personal community activism.

K

KALE, STEPHEN.

The Impact of New or Additional Industry Upon Rurally Oriented Areas: A Selectively Annotated Bibliography with Emphasis on Manufacturing. Monticello, Illinois: Council of Planning Librarians Exchange Bibliography, 1976.

This bibliography contains entries from the past twenty years and, though brief, it is a source of information for those working on rural industrialization problems. The Exchange Bibliography itself, is a compendium of bibliographies, many of which are related to rural planning and development.

KNOKE, DAVID; AND HENRY, CONSTANCE

"Political Structure of Rural America." *The Annals.* 429(1977): 51-62.

Rural areas in the United States are historically conservative. Increased exposure to mass media and population mobility will change this especially since rural areas are less represented in state and federal governments. Other social dimensions may play a more important role in political conflict than the rural-urban dimension. The authors feel that it is not likely that rural interests will capture national political attention.

L

LASSEY, WILLIAM R.

Planning in Rural Environments. New York: McGraw-Hill, 1977.

This book offers a body of concepts, research based information, planning procedures, and management tools to assist in planning for rural areas. It is illustrated and the variety of people, places and resources one finds in rural areas is taken into consideration. A chapter on human services emphasizes the complexity of the planning process by discussing the political, social, and economic aspects of such planning programs.

LASSEY, WILLIAM R., AND FERNANDEZ, RICHARD, eds.
Leadership and Social Change. 2nd ed. La Jolla, California:
Univeristy Associates, 1976.

A revised and enlarged edition of a book originally published in 1971. It provides summaries of research and theories about leadership in so far as they might apply in the implementation of the Rural Development Act of 1972. Many of the articles are reprints from other sources, and much of the material is familiar. It is a compendium of approaches to leadership, particularly those popular within the Cooperative Extension network.

LUFT, H.S. *et al.*

"Factors Affecting the Use of Physician Services in a Rural Community". *American Journal of Public Health*. 66(1976): 865-871.

A study of five variables in the use of physician services in rural areas. The authors found education to be more important than income in seeking medical care. They believe that the distance to health care is not as important as has been suggested, since distance in rural areas is perceived differently than the same distance in urban areas.

M

MARK, CHARLES

Sociology of American: A Guide to Information Sources.
Detroit: Gale Research Company, 1976.

This bibliography of recent works focuses on the sociology of American Life and culture. Designed for the student or the researcher, the book contains over 1,800 entries arranged in 24 chapters. Sections such as "Regional and Rural Studies", "Social Stratification" or "Health and Social Services" should interest rural development planners and students. There are sections on general references, sociological journals, and important books in sociology. The entries are mainly books with emphasis on empirical studies, monographs, and research reports rather than theory, methods, applied or cross-disciplinary work.

MARTIN, PHILLIP L.

"Public Service Employment and Rural America." *American Journal of Agricultural Economics*. 59(1977): 276-282.

Rural areas do not get a proportional share of public employment funds such as EEA and CETA even though over a billion dollars is spent in these programs every year. The author suggests that, in addition to an inherent urban bias in the programs, rural areas fail to receive their share because many of them simply do not apply.

MARTINSON, O.B.; WILKENING, E.A.; AND RODEFELD, R.D.

"Feelings of Powerlessness and Social Isolation Among Large-Scale Farm Personnel" *Rural Sociology*. 41(1976): 452-472.

The article says that large scale agriculture is creating a new occupational class of agricultural wage workers with a growing sense of isolation and powerlessness.

MERRILL, RICHARD, ed.

Radical Agriculture. New York: Harper and Row, 1976.

This book on alternate methods of agriculture emphasises small scale farm and energy efficiency with a non-agribusiness bias. Articles included are on organic farming, co-ops, aquaculture, etc.

MERTENS, DONNA M, AND BRAMBLE, WILLIAM J. (a)

Appalachian Education Satellite Project. Technical Report No. 13. *Literature Review*. Lexington, KY: University of Kentucky, RCC Evaluation Component, 1976.

See next annotation.

(b)

Appalachian Education Satellite Project. Technical Report No. 14. *Appalachian Needs*. Lexington, KY.: University of Kentucky, RCC Evaluation Component, 1976.

The Appalachian Regional Commission initiated an experiment in 1971 to investigate the feasibility of using a satellite to deliver educational programs to sparsely settled areas. These technical reports from the Appalachian Education Satellite Project summarize the literature which identifies educational needs in the Appalachian area. Although the content of the reports refers specifically to the Appalachian region, the approach relates to the general question of getting information into rural areas.

MOGEY, JOHN.

"Recent Changes in the Rural Communities of the United States." *Sociologia Ruralis*. 16(1976): 139-160.

This statistical analysis of data from over 3,000 U.S. counties shows that rural communities have not changed much between 1960 and 1970. Problems of poverty, health, education and equality continue. The author believes that rural communities are adapted for stability, change tends to be disruptive and disintegrating since it reduces boundary maintenance and religious or ethnic homogeneity.

MUSHKATEL, ALVIN H.; AND SLIPY, DAVID M.

"Zoning Functions: Local Officials Responses to an Educational Program." *Journal of Community Development Society*. 8(1977): 39-49.

A report on research to measure cognitive, attitudinal, and behavioral changes among voluntary planning officials from small communities and rural areas in Minnesota following exposure to a training module on zoning functions. Problems with methods, interpretation, and circumstances limited the findings in the attitudinal and behavioral areas. The pre-test and post-test in the cognitive area showed significant change in the participants' informational level. The authors make note of the very low performance of local officials in the cognitive pretest and suggest such low level of knowledge about zoning among officials of smaller communities is a factor in inadequate local zoning policy and practice.

N

NATIONAL RESEARCH COUNCIL, TRANSPORTATION RESOURCE BOARD.

Transportation and Land Development Policy. Washington, D.C.: Transportation Research Board, 1976.

This series of papers is concerned with land use planning and the role of transportation networks. Some papers relate primarily to urban areas but others are on regional and area planning and how transportation and highways can be used to direct growth. Discussions of the social and economic importance of integrated planning are included.

NELSON, JAMES.

"Extension Application of a Rural Development Simulation Model." *Journal of Community Development Society*. 8(1977): 61-68.

A brief and sketchy description of a computerized simulation model to demonstrate influences of development programs or strategies on rural economic development. It is a training device designed for use with multi-county or state level "decision-makers", and not as a direct support to public policy formation. The author feels that the simulator could help to define alternate development strategies for specific areas, but successful application has been restricted to educational games played in workshop settings.

NIX, HAROLD L.; DRESSEL, PAULA L. AND BATES, FREDERICK.

"Changing Leaders and Leadership Structure: A longitudinal Study." *Rural Sociology*. 42(1977): 22-41.

This is a study of the structure of leadership and the individuals who occupy the positions. It contends that an increased division of labor in the community brings a greater dispersal of power. Power positions are related to the positions held in community organizations and the individuals who fill these positions change frequently.



O'LEARY, JOSEPH T.

"Land Use Redefinition and the Rural Community: Disruption of Community Leisure Space." *Journal of Leisure Research*. 8(1976): 263-274.

Land use planning at the state or regional level can fail to consider locally defined leisure boundaries and encounter antagonism to the planners and the program.

P

PARKER, CARRIE G.; LADEWIG, HOWARD W.; AND MCLEAN, EDWARD L.
A Bibliography of Rural Development: Listings by Topic.
Clemson, S.C.: Clemson University, Department of Agricultural Economics. 1976.

This bibliography includes items arranged by 12 subheadings from 18 journals between 1950 and 1975. Topics are: leadership, community, organization, rural-urban relations, agriculture, environmental improvement, and others.

PIERCE, JOHN C.; AND DOERKSEN, HARVEY R., eds.
Water Politics and Public Involvement. Ann Arbor, Mich.: Ann Arbor Science, 1976.

The authors discuss citizen participation against a backdrop of their own experiences in determining public water policy. They found difficulties in determining who is the public, how they should be involved, and how their input is to be integrated into the planning process. They describe public involvement techniques and evaluate some public participation programs.

PROCOPIO, MARIELLEN AND PERELLA, FREDERICK J., JR.
Poverty Profile U.S.A. New York: Paulist Press, 1976.

The statistics of poverty indicate that 40 percent of the nation's poor live in rural areas. Ninety percent of the Indians on reservations live below the poverty line. Data on the elderly and various ethnic groups are given as well as a regional breakdown of the data. There are also data on the use of various assistance programs such as food stamps.

R

RAINEY, KENNETH D.

"Forces Influencing Rural Community Growth." *American Journal of Agricultural Economics.* 58(1976): 959-962.

The author expects that the future will bring a change in the functions of rural and urban areas as the cities decline in their cultural and economic importance. Statistical definitions of rural or urban areas will lose their usefulness.

REYNOLDS, RICHARD; BANKS, SAM A; AND MURPHREE, ALICE.

The Health of a Rural County: Perspectives and Problems.
Gainesville, FL.: University of Florida Press, 1976.

A successful community health program can be operated by a medical school. Although this report concerns a specific county in Florida, it can serve as an overview of health patterns in rural areas, attitudes toward health care, folk beliefs, and communications problems between urban trained physicians and rural people.

ROEMER, MILTON L.

Rural Health Care. St. Louis: C.V. Mosby Company, 1976.

This booklet includes five papers on rural health care that focus on the rural poor and overviews of various programs. Chapters on the health problems in rural areas and overviews of health programs in rural areas in other countries may be of interest to health planners.

ROGERS, DAVID L.; AND WHITING, LARRY R., eds.

Aspects of Planning for Public Services in Rural Areas. Ames: Iowa State University Press, 1976.

This book makes the point that planning in rural areas is different from planning in urban concentrations because of lower population density, smaller scale economics, and smaller tax bases. Providing public services for rural areas demands a more consolidated effort with coordination of many agencies. This book addresses various topics with an emphasis on breadth rather than depth. There is a review of existing planning strategies and a consideration of various alternatives at each stage of the process.

ROSENZWEIG, MARK R.

"The Demand of Farm Families for the Quantity and Quality of Schooling for Their Children in the United States."
American Journal of Agricultural Economics. 58(1976):
842-857.

The author found that, since farm children participate in production, school enrollment rates for teenagers tend to drop. The education of children is, however, an economically sound investment especially when it includes training in agriculture. There is a correlation between school enrollment rates for teens and area agricultural productivity.

ROTHMAN, JACK; ERLICH, JOHN L.; AND TERESA, JOSEPH G.

Promoting Innovation and Change in Organizations and Communities: A Planning Manual. New York: Wiley, 1976.

This handbook for training focuses on four principles: how to promote an innovative program; changing the goals of an organization; increasing participation in organizations or groups and increasing the effectiveness in role performance. It is a "how-to" book of community development based to some extent on Alinsky's battle-cry approach.

S

SANDAY, PEGGY R. ed.

Anthropology and the Public Interest. New York: Academic Press, 1976.

The theme of this book is the application of anthropology in formulating and implementing domestic social policy. Section one, on the anthropologist's role in policy formation is excellent. Succeeding chapters on specific topics such as the Equal Rights Amendments (ERA) are adequate, but are not of the same consistent quality as the first section.

SANDERS, IRWIN T.

Rural Society. Englewood Cliffs, N.J.: Prentice-Hall, 1977.

This is a short basic rural sociology text emphasizing social structure and the roles of the individual, the family, and the community. In addition to the usual chapters on values, norms, etc., there are chapters on local government and politically conscious rural organizations. One chapter concerns federal government and its role in rural social change.

SARGENT, FREDERICK O.

Rural Environment Planning. Burlington, Vt.: University of Vermont Press, 1976.

This book is about planning for natural environments. It emphasizes citizen participation in the planning/decision making process as well as on using experts and specialists to provide advice. It also discusses economics of planning around natural resources such as agricultural land, rivers, lakes, mountains and recreation areas. It is an unusual synthesis of environmental concerns with the potential impact of planning programs on low income populations. The book contends that planning for industrial, commercial, and residential land use is generally promoted at the expense of planning for environmental protection.

SCOTT, LOREN C.; SMITH, LEWIS H.; AND RUNGELING, BRIAN.
"Labor Force Participation in Southern Rural Labor
Markets." *American Journal of Agricultural Economics*.
59(1977): 266-274.

The authors study the major determinants of labor force participation (whether people will look for a job) and show that wages affect secondary workers but not primary workers. Other important factors are the availability of day-care centers, job training and the absence of discriminatory hiring policies.

SHEA, K.P.
"American Agriculture: Who Stole the Revolution?" *Environment*. 18(1976): 28-38.

This brief history of agriculture concentrates on U.S. Department of Agriculture programs. One section on the increase of farm size as it relates to changes in small towns indicates that towns surrounded by medium to small sized farms generally are better off in terms of community services, communication, civic improvements, and recreation.

SLOCUM, W.L.
Rural Youth in Washington State. Bulletin No. 818.
Pullman, Wash.: Washington State University, College
of Agriculture, Research Center, 1976.

This monograph gives an overview of adolescent values and behavioral norms with chapters on the interests and activities of young people.

SMITH, ELDON D.
A Bibliography: Industrialization in Rural Areas. Rural
Development Bibliography No. 1. Mississippi State, Miss.:
Southern Rural Development Center, 1976.

This is a collection of 755 bibliographic citations with about half of the entries briefly annotated. It covers virtually every aspect of rural industrialization and the entries are cross-referenced according to an outline given at the beginning of the book.

SORENSEN, DONALD M.; AND HARTMAN, L.M.

"Organizational and Institutional Aspects of Community: Some Conceptual Perspectives." *American Journal of Agricultural Economics*. 58(1976): 933-936.

The loss of the sense of community is a problem in many areas. The authors argue that a renewal of the communication process could provide the basis for determining human values and shared meanings. Many social science professionals lose sight of the idea of community by approaching it only from the perspective of their own discipline. They believe a new methodology is needed, which transcends those specialized ones now used, to emphasize human relationships and improved organizational/institutional responsiveness.

SOUTHERN REGIONAL COUNCIL

Increasing the Options: A Task Force Report on Southern Rural Development. Atlanta: The Southern Regional Council, 1977.

This monograph is an overview of problems of development in the Southeastern United States with emphasis on regional economic planning as a solution to the area's problems. The report is based on technical reports that are not included in the monograph, and it is difficult to assess the validity of the report. However, the regional approach suggested could have application in other geographic areas.

SOUTHERN RURAL DEVELOPMENT CENTER.

Rural Development Literature: An Annotated Bibliography 1969-1975. Washington, D.C.: U.S. Department of Agriculture, Rural Development Service, 1976.

A selected bibliography of literature and information sources in rural development with particular emphasis on government publications. The seven topic areas include the following: Fire and Emergency Services; Health Care Delivery Systems; Sanitary Services and Sewage Systems; Manpower Training and Vocational Education; Public Recreation Facilities and Planning; Local Government Structure; and Taxation and Rural Housing. Each section lists agencies and organizations concerned with the topic along with the addresses of these and other sources of information. The bibliography is designed for use by community members rather than by researchers.

STALEY, JAYNE G.

A Rural Medical Center: A History of the Robert Packer Hospital and Guthrie Clinic. Sayre, Pa.: Donald Guthrie Foundation for Medical Research, 1976.

A history of a clinic, later a hospital and medical education center, which developed in a rural area in Pennsylvania. Though it deals with a specific case, this report provides material that can be related to general regional health planning issues.

STANFIELD, GARY G.; AND HEFERMAN, WILLIAM D.

"Critique of Theorizing in Studies of Manufacturing Expansion in Rural Areas." *Journal of Community Development Society.* 8(1977): 50-60.

A review of four theoretical perspectives for studies of rural manufacturing, with a view to stimulate further development and better use of theory in investigation and evaluation of rural industrialization. The four perspectives selected are: "symbolic interactionism," "complex organization," "systems theory," and "cultural contextual". The authors recommend more use of these frameworks but point out their limitations. They see a need for better theorizing to tie research more directly into policy formation and administration regarding rural industrial expansion.

SUMMERS, GENE F.

"Industrial Development of Rural America: A Quarter Century of Experience." *Journal of the Community Development Society.* 8(1977): 6-18.

This article reinforces the idea that industrial development in rural areas is a complex phenomenon. It summarizes 168 reports on the effect of an industry on a rural area which show that, while industry and local business generally gain, the effects are small on the public sector (tax gains are overshadowed by costs to provide services to the industry). The article indicates that economically disadvantaged are either not effected or are negatively effected.

SUMMERS, GENE F.; AND CLEMENTE, F.

"Industrial Development, Income Distribution and Public Policy." *Rural Sociology*. 41(1976): 248-268.

The article examines the public policy implications of industrial development and its effects on the income status of weak competitors in a community. It indicates that individuals with less advantage due to age, sex, education, or labor force status likely will find their disadvantage exaggerated over time. Those disadvantaged due to sex and labor force status are most effected. The article suggests that public policy specifically include strict enforcement of equal rights laws and an awareness of the possible negative consequences of industrialization on small communities.

SUMMERS, GENE F.; EVANS, SHARON; CLEMENTE, FRANK; BECK, ELWOOD M., JR.; AND MINKOFF, JON.

Industrial Invasion of Nonmetropolitan America. New York: Praeger, 1976.

This book is a review of research reports on the impact of industry on nonmetropolitan areas. Major topics include population growth and change, employment and income, public sector financing, and human or social effects of industrialization. The book surveys case study documents by state and by regions and includes a bibliography of the individual studies. The work concludes that industrialization can solve some problems, but it also creates new problems.

U

U.S. CONGRESS: SENATE COMMITTEE ON AGRICULTURE AND FORESTRY, SUBCOMMITTEE ON RURAL DEVELOPMENT. (a)

Success Stories in Rural Health Care Delivery: Hearings Before the Committee, Washington, D.C.: U.S. Printing Office, 1976.

A series of hearings on a range of health care delivery systems for rural areas that have been more or less successful.

(b)

Rural Health Services in Iowa. Washington, D.C.: U.S. Government Printing Office, 1976.

Presents an overview of the ways in which health care professionals view the problems of health care to rural areas. The report gives more insight into the perspective of the professionals than the problems of rural Iowa, but in this regard the publication is useful.

U.S. DEPARTMENT OF LABOR, EMPLOYMENT AND TRAINING ADMINISTRATION
[LEONARDSUN, GENE S., AND NELSON, DAVID M.]

Rural Oriented Research and Development Projects: A Review and Synthesis. R&D Monograph 50. Washington D.C.: U.S. Government Printing Office, 1977.

Summarizes findings in research reports and other publications on employment and training problems and/or programs in rural areas related to certain Department of Labor sponsored research. Considerable attention is given to the subjects of labor demand and supply in rural areas. It contains some recommendations for future research, suggestions for program design and implementation, and includes a bibliography of research reports and documents.

V

VAUX, H.J., JR.

"Rural Land Subdividing: A Lesson from Southern California." *Journal of American Institute of Planners.* 43(1977): 271-278.

The fiscal implications of rural subdivisions on local governments are examined in two communities. The author found that vacant lots create net tax revenues to the county, as well as to special districts, but the profitability will decrease significantly through time. The long run effects are negative. Economically, subdivisions for vacation or retirement communities require more services than they support by taxes.

VRECHEK, NANCY M. AND BROWN, E. EVAN

"Food Stamps for Rural America." *Rural Development Research and Education.* 1(1977).

A study of the use of food stamps in rural areas showing greater use by the working poor than by welfare families. It indicates that most public assistance goes to women and a majority of the heads of households using food stamps are over 45 years old.

W

WARDWELL, JOHN M.

"Equilibrium and Change in Nonmetropolitan Growth." *Rural Sociology*. 42(1977).

The author concludes that nonmetropolitan areas near cities will continue to expand, but more remote areas also will continue to grow as they develop into retirement and recreational areas.

WIEGAND, KENNETH B.; AND INFANGER, CRAIG L.

"Planning for Rural Community Fire Protection." *Rural Development Research and Education*. 1(1977): 2-3.

A brief overview of various types of rural fire protection services, including methods of finance and operations.

Y

YOESTING, D.R.; AND BURKHEAD, D.L.

"Perception of Water Pollution in a Rural Area: A Cognitive Dissonance Approach." *Iowa State Journal of Research*. 51 (1976): 59-66.

The researchers conclude that farmers are less likely than nonfarmers to perceive farm practices as a major source of pollution. They found no direct correlation between the knowledge of polluted areas and the perception of farm practices.

YOUNG, E. GRANT

"The Rural Aged." *The Annals*. 429(1977): 81-90.

The available data suggest that the rural aged, compared with urban older people, have substantially smaller incomes, are more restricted in mobility because of inadequate transportation facilities, report poorer physical health, and reveal a more negative attitude toward life. The data indicate that industrialization of rural areas has a negative impact on the rural elderly. The author suggests that longitudinal studies of rural old people are needed to guide programs and services.

YOUNG, FRANK W.

A Rural Development Inventory. Honolulu: East-West Center, Technology and Development Institute, 1976.

Outlines a low cost technique for measuring rural development by districts. The inventory involves indices for such things as the overall level of commercial specialization, the degree of economic or political inequality, the interaction between district and central governments, and the level of ethnic, religious, and political mobilization in each district. Facts on soils, climate and geography also are used in the analysis. The technique combines methods from sociology and anthropology, and the author presents it as a means for quantifying without losing some difficult-to-quantify variables.





Topical Index

ANTHROPOLOGY

- Almy, 1977, p. 5 ● Angrosino, 1976, p. 6 ● Bleshaw, 1976, p. 8 ● Cochrane, 1976, p. 12 ● Gerlach, 1976, p. 18 ● Jones, 1976, p. 22 ● Sanday, 1976, p. 30.

BALANCED GROWTH

- Edwards (a) (b), 1976, p. 16 ● Rainey, 1976, p. 28.

BIBLIOGRAPHIES

- Kale, 1976, p. 23 ● Mark, 1976, p. 24 ● Parker, Ladewig, and McLean, 1976, p. 28 ● Smith, 1976, p. 31 ● Southern Rural Development Center, 1976, p. 32.

COMMUNITY DEVELOPMENT

- Blake, Kalb, and Ryan, 1977, p. 9 ● Cohen, 1977, p. 13 ● Rothman, Erlich and Teresa, 1976, p. 30 ● Sorensen and Hartman, 1976, p. 32.

ECONOMICS

- Ayer and Weidman, 1976, p. 6 ● Clawson, 1976, p. 12 ● Cochrane, 1976, p. 12 ● Daberkow and King, 1977, p. 14 ● Doeksen, 1977, p. 15 ● Edwards (a) (b), 1976, p. 16 ● Fry, 1977, p. 17 ● Gessaman, Janssen, and Morris, 1977, p. 18 ● Hamilton, Peterson, and Reid, 1976, p. 20 ● Huffman, 1976, p. 21 ● Jansma and Goode, 1976, p. 22 ● Martin, 1977, p. 25 ● Nelson, 1977, p. 27 ● Rosenzweig, 1976, p. 29 ● Scott and Smith, 1977, p. 31 ● Southern Regional Council, 1977, p. 32 ● Vaux, 1977, p. 35 ● Young, 1976, p. 37.

EDUCATION/TRAINING

- Clarenback, 1977, p. 12 ● Mertens and Bramble (a) (b), 1976, p. 25 ● Mushkatel and Slipy, 1977, p. 26 ● Nelson, 1977, p. 27 ● Rosenzweig, 1976, p. 29 ● U.S. Department of Labor, 1977, p. 35.

ENVIRONMENT/POLLUTION

- Sargent, 1976, p. 30 ● Yoesting and Burkhead, 1976, p. 36.

ELDERLY

- Youmans, 1977 p. 36.

FIRE PROTECTION

- Wiegard and Infanger, 1977, p. 36.

GROWTH IN RURAL AREAS

- Ayer and Weidman, 1976, p. 6 ● Beale, 1976, p. 7
- Campbell and Johnson, 1976, p. 10 ● Carpenter, 1977, p. 11 ● Clawson, 1976, p. 12 ● DeJong and Humphrey, 1976 p. 14 ● DeJong and Sell, 1977, p. 15 ● Gordon and Darling, 1976, p. 19 ● Jacobson, 1976, p. 21 ● Rainey, 1976, p. 28 ● Summer, Evans, Clemente, Elwood and Minkoff, 1976, p. 34 ● Wardwell, 1977, p. 36.

HEALTH

- American Medical Association, 1976, p. 5 ● Cooper, Heald, and Samuels, 1977 p. 13 ● Daberkow, and King, 1977, p. 14 ● Doeksen, 1977, p. 15 ● Hassinger and Whiting, 1976, p. 20 ● Howe and Warren, 1977, p. 21
- Jones, Wegenfeld, and Robin, 1976, p. 22 ● Luft, 1976, p. 24 ● Reynolds, Banks, and Murphree, 1976, p. 29
- Roemer, 1976, p. 29 ● Staley, 1976, p. 33 ● U.S. Congress (a) (b), 1976 p. 34, 35.

HISTORY

- Fremon, 1976, p. 17 ● Gerlach, 1976, p. 18 ● Shea, 1976, p. 31 ● Staley, 1976, p. 33.

HOUSING

- Cobb, 1977, p. 12.

INDUSTRIALIZATION

- Ayer and Weidman, 1976, p. 6 ● Kale, 1976, p. 23
- Smith, 1976, p. 31 ● Stanfield and Heferman, 1977, p. 33 ● Summers, 1977, p. 33 ● Summers and Clements, 1976, p. 34 ● Summers, et al, 1976, p. 34.

LAND USE

- Bowman, 1976, p. 9 ● National Research Council, 1976, p. 26 ● O'Leary, 1976, p. 27 ● Sargent, 1976, p. 30
- Vaux, 1977, p. 35.

LABOR/EMPLOYMENT

- Bissell, 1976, p. 8 ● Martin, 1977, p. 25 ● Martinson, Wilkening, and Rodefild, 1976, p. 25 ● Scott and Smith, 1977, p. 31 ● U.S. Department of Labor, 1977, p. 35.

LEADERSHIP

- Lassey and Fernandez, 1976, p. 24 ● Nix, Dressel, and Bates, 1977, p. 27.

MIGRANT WORKERS

- Bissell, 1976, p. 8 ● Cotera, 1976 p. 14 ● Dunbar and Kravitz, 1976, p. 15 ● Gundlach, Reid and Roberts, 1977, p. 19.

MINORITIES

- Clarenback, 1977, p. 12 ● Cotera, 1976, p. 14 ● Gundlach, Reid, and Roberts, 1977, p. 19 ● Hansen and Long, 1977, p. 20.

PARTICIPATION

- Pierce and Doerksen, 1976, p. 28 ● Rothman, Erlich, and Teresa, 1976, p. 30 ● Sargent, 1976, p. 30.

PART-TIME/SMALL SCALE FARMING

- Breimyer, 1977, p. 9 ● Fuller and Mage, 1976, p. 17 ● Merrill, 1976, p. 24.

PLANNING

- Bowman, 1976, p. 9 ● Cherry, 1977, p. 11 ● Cochrane, 1976, p. 12 ● Cohen, 1977, p. 13 ● Daberkow and King, 1977, p. 14 ● Fry, 1977, p. 17 ● Hawkins and Stein, 1977, p. 21 ● Lassey, 1977, p. 23 ● Mushkatel and Slipy, 1977, p. 26 ● National Research Council, 1976, p. 26 ● O'Leary, 1976, p. 27 ● Rogers and Whiting, 1976, p. 29 ● Sargent, 1976, p. 30 ● Vaux, 1977, p. 35.

POLICY

- Angrosino, 1976, p. 6 ● Ayer and Weidman, 1976, p. 6 ● Belshaw, 1976, p. 8 ● Berger, 1976, p. 8 ● Bowman, 1976, p. 9 ● Breimyer, 1976, p. 9 ● Coppedge and Davis, 1976, p. 13 ● Edwards (a) (b), 1976, p. 16 ● Fuller and Mage, 1976, p. 17 ● Sanday, 1976, p. 30 ● Summers and Clemente, 1976, p. 34.

POLITICAL ASPECTS

- Berger, 1976 p. 8 ● Clawson, 1976, p. 12 ● Knoke and Henry, 1977, p. 23 ● Pierce and Doeksen, 1976, p. 28.

POVERTY

- Baker, et al, 1976, p. 7 ● Browning, 1976, p. 10 ● Coppedge and Davis, 1976, p. 13 ● Procopio and Perella, 1976, p. 28 ● Vrechek and Brown, 1977, p. 35.

QUALITY OF LIFE

- Campbell, Converse, and Rogers, 1976, p. 10 ● Dillman and Tremblay, 1977, p. 15.

RURAL DEVELOPMENT ACT OF 1972

- Cosby, Wetherill and Ladewig, 1977, p. 13.

SOCIAL PROBLEMS/SERVICES

- Baker, et al, 1976, p. 7 ● Browning, 1976, p. 10
- Coppedge and Davis, 1976, p. 13 ● Hassinger and Whiting, 1976, p. 20 ● Vrechek and Brown, 1977, p. 35.

SOCIOLOGY

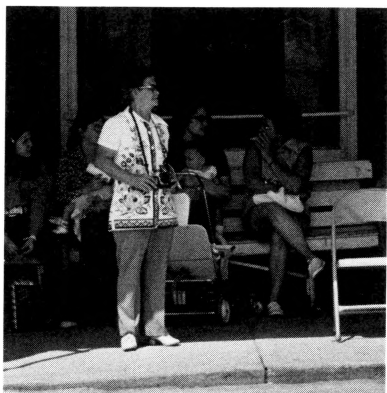
- Blake, Kalb, and Ryan, 1977, p. 9 ● Campbell, Converse, and Rodgers, 1976 p. 10 ● Campbell and Johnson, 1976, p. 10 ● Capener and Berkowitz, 1976 p. 11 ● Carpenter, 1977, p. 11 ● DeJong and Humphrey, 1976, p. 14 ● DeJong and Sell, 1977, p. 15 ● Glenn and Hill, 1977, p. 18
- Goudy, 1977, p. 19 ● Hansen and Long, 1977, p. 20
- Huffman, 1976 p. 21 ● Jones, Wegenfeld and Robin, 1976, p. 22 ● Mark, 1976 p. 24 ● Martinson, Wildening, and Rodefild, 1976, p. 25 ● Mogeey, 1976, p. 27 ● Nix, Dressel, and Bates, 1977, p. 27 ● Procopio and Perella, 1976, p. 28
- Sanders, 1977, p. 30 ● Slocum, 1976, p. 31 ● Sorenson and Hartman, 1976, 1976, p. 32 ● Summers and Clements, 1976, p. 34 ● Yoesting and Burkhead, 1976, p. 36 ● Youmans, 1977, p. 36 ● Young, 1976, p. 37.

TRANSPORTATION

- Beale, 1976, p. 7 ● National Research Council, 1976, p. 26.

WOMEN

- Clarenback, 1977, p. 12 ● Cotera, 1976, p. 14.



Addendum

Additional publications, not annotated or indexed, that may be relevant to rural development in the United States include:

BORDENOVE, JUAN DIAZ

Communication and Rural Development. New York: UNESCO., 1977.

ESBENSHADE, H.W.

Farming: Sources for a Social and Ecologically Accountable Agriculture. Davis, Calif.: Citizens Action Press, 1977.

FORD, THOMAS R.

Rural Society in the United States: Current Trends and Issues. Ames, Iowa: Iowa State University Press, 1977.

GREEN, DONALD E.

Rural Oklahoma. Oklahoma, City: Oklahoma Historical Society, 1977.

GUILLET, DAVID AND UZZELL, DOUGLAS

"New Approaches to the Study of Migration." *Rice University Studies.* 62(1976).

LINOWES, R. ROBERT AND ALLENSWORTH, DON T.

The Politics of Land Use: Developers vs. Citizen Groups in Courts. New York: Prager, 1976.

LIPTON, MICHAEL

Why Poor People Stay Poor: A Study of Urban Bias in World Development. London: Temple Smith, 1977.

NEESE, HARVEY C.

The Poverty Dimension of Rural Underdevelopment in America,
Ames, Iowa: Iowa State University Press, 1976.

NELSON, JOAN M.

Temporary versus Permanent Cityward Migration: Causes and Consequences, Cambridge, Mass.: MIT, Migration and Development Study Group, 1976.

ROGERS, DAVID L. AND GOUDY, WILLIS J.

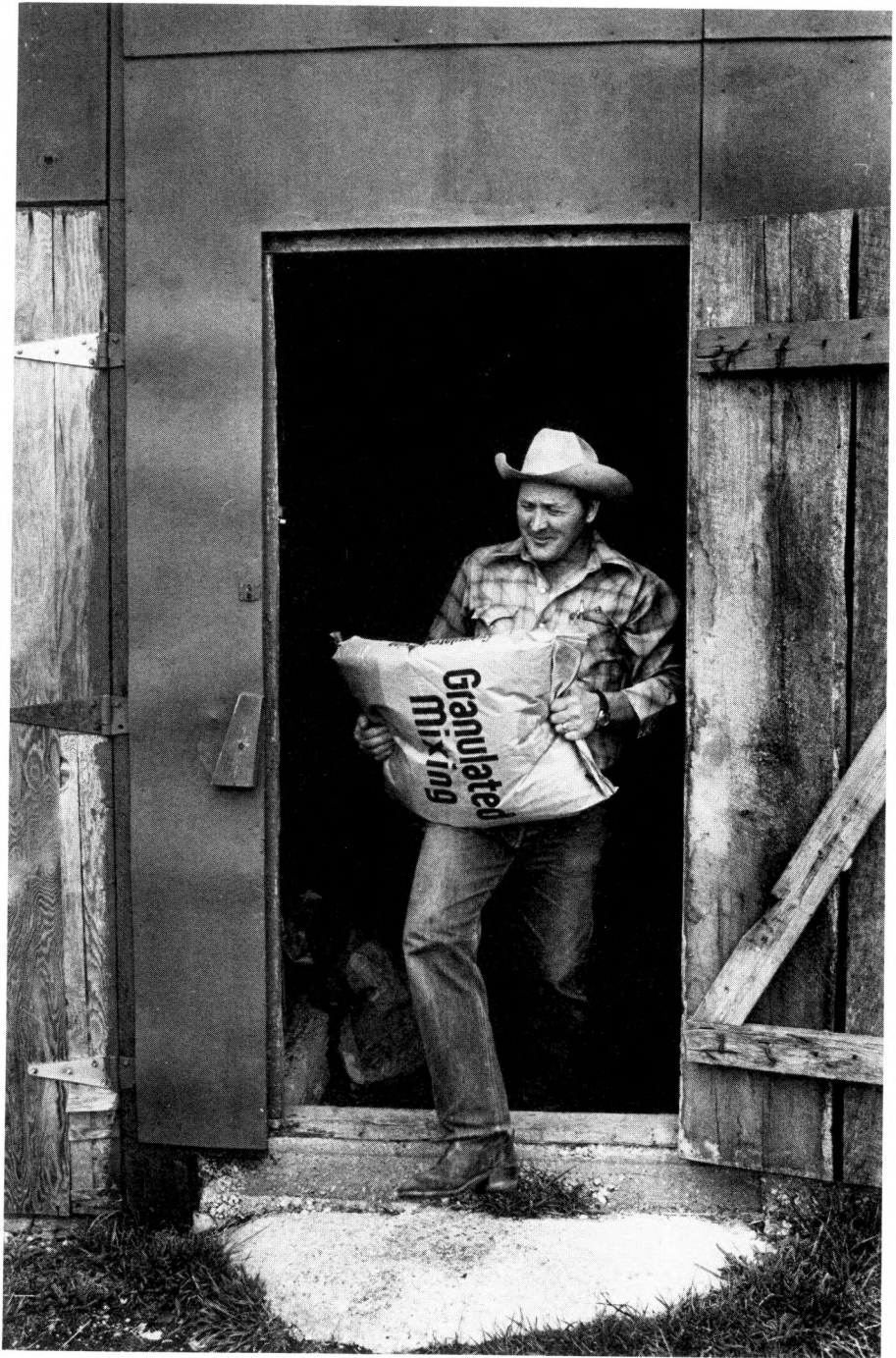
"Location of New Industrial Firms: Analysis of Size of Town and Firm Characteristics." *Iowa State Journal of Research*. 52(1977): 253-260.

ROGERS, DAVID L., GOUDY, WILLIS, AND RICHARD, ROBERT.

"Impact of Industrialization of Employment and Occupational Structures." *Journal of Community Development Society*. 7(1976): 48-62.

ROSENZWEIG, M.R.

"Demand for Children in Farm Households." *Journal of Political Economy*. 85(1977): 123-146.



Contents

	1
Introduction	
	5
Citations	
	41
Topical Index	
	45
Addendum	



University Libraries
University of Missouri

Digitization Information Page

Local identifier MP0511

Source information

Format Book
Content type Text with images
Source ID
Notes

Capture information

Date captured 11/27/23
Scanner manufacturer Fujitsu
Scanner model fi-7460
Scanning system software ScandAll Pro v. 2.1.5 Premium
Optical resolution 600 dpi
Color settings 8 bit grayscale
File types tiff
Notes

Derivatives - Access copy

Compression Tiff: LZW compression
Editing software Adobe Photoshop
Resolution 600 dpi
Color grayscale
File types tiff
Notes Images cropped, straightened, brightened