

# MIZZOU

WEEKLY

University of Missouri-Columbia June 20, 1996



MU's choice offerings for summer fun are ready for the picking. Check out the options in the Summer Session Calendar, pages 6 and 7.



Chancellor Charles Kiesler told reporters Monday that he would like to work with the curators to "clear the air" about his performance as chancellor.

Nancy O'Connor photo

## Timeline extended on chancellor's evaluation

The Board of Curators on Monday voted 8-1 to accept a recommendation from UM System President George Russell to delay for a month any decision affecting Chancellor Charles Kiesler's leadership role at MU.

"There appears to be some feeling that we have rushed to some decision," Russell said at a Monday news conference after the special meeting of the curators. "I think that's unfair. On the other hand, I think you must do whatever is fair, so I've asked the board to put in abeyance any decisions that might have been made and allow me to continue the process of evaluating the performance of Dr. Kiesler until the next regular board meeting." The next meeting is July 18 and 19.

"I am very pleased that the board

decided to slow this process down and to give us some time to work on the issues that face us," Kiesler said at a press briefing later Monday. "I hope we can work something out."

Russell said he met with Kiesler Sunday to discuss his recommendation to the curators and will continue to meet with the chancellor. "We will be talking about the performance evaluation and trying to reach a mutually understandable position," Russell said. "There are a lot of things here that we need to make certain are well understood on both sides."

Kiesler said he hopes to meet with curators individually or in small groups over the next month and "talk about the issues and their perceptions of what I do that they like and don't like to help clear

the air and let us pin some of the issues down. Perhaps I have information and other things to add to that evaluative process."

The curators are responsible for four campuses, a \$1.5 billion budget and thousands of employees, Kiesler pointed out. "Whether we're thinking about the issues in the same way, I don't know."

Board President Fred Hall said all parties need to see eye-to-eye on the issues under discussion. "We need to be on the same wavelength and make sure that we have a good rapport and that there's a good understanding of what the curators want to accomplish in carrying out our five-year plan.

See Evaluation, Page 2

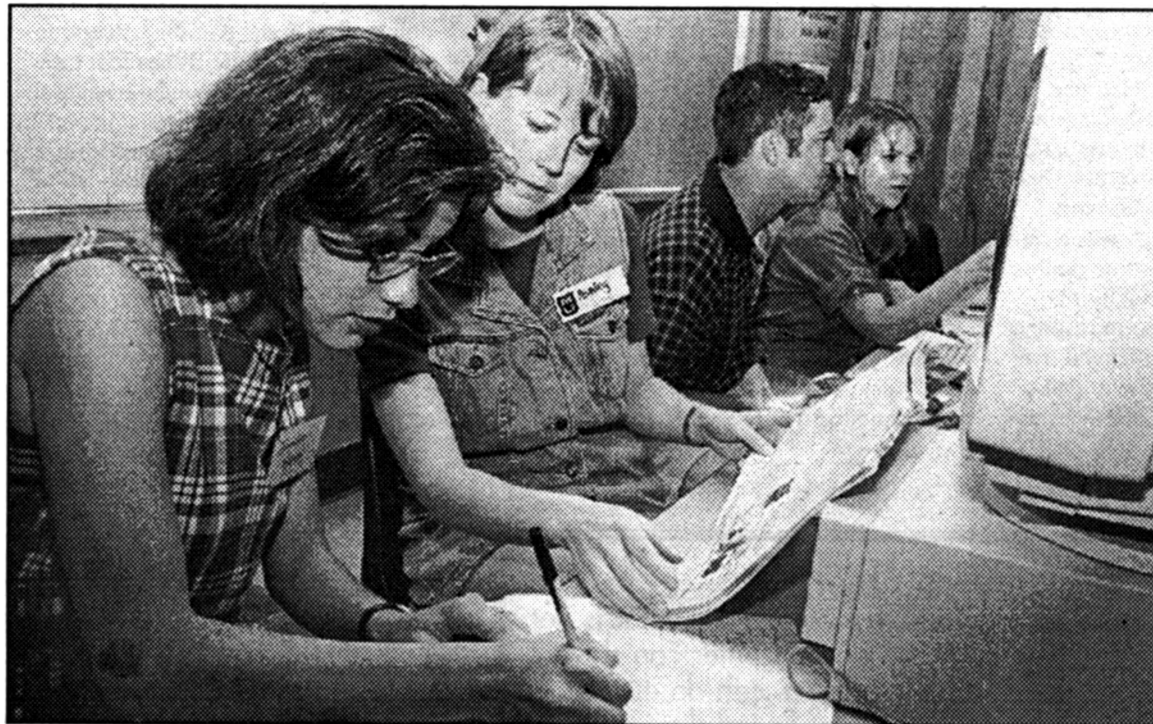
*Enhanced registration access will have MU students*

## Online, not in line

Gary Freie still remembers a good chuckle he had a few years back. As director of registration, he frequently patrols the student registration site in Brady Commons at the beginning of each semester, seeing that things run smoothly. At one registration session, a dozen or so students were waiting in line to sign up for classes. One of them started grousing about the wait. "Take it easy," said another student. "You wouldn't believe what it used to be like."

After nearly 25 years of working with the registration process at MU, Freie remembers all too well what it used to be like. And so do thousands of former students from the '60s, the '70s and even the early '80s.

The ordeal called registration has been held over the years in Brewer Fieldhouse, Rothwell Gymnasium and at the Hearnes Center. Back then, signing up for classes often degenerated into an daylong nightmare, marked by long lines, short tempers, miles of red tape, and — depending on the season — blistering heat or icy cold. It took two days to set up the



Senior Ashley Thomson, center, helps Jennifer Kessler, a freshman from Costa Rica, use MU's online registration process.

Nancy O'Connor photo

work will apply to a different degree program.

The goal, Freie says, is "to intrude as little as possible in students' lives with our administrative necessities. They have better things to do and we don't want to divert them from what they should be doing — and that's learning."

Gary Smith, registrar and director of admissions, points to a

number of ways the new system benefits students. "Students can stay current all the time now on registration matters," Smith says. "We want to make the process as convenient for students as possible. This new program adds another dimension to registration. Now they can register at Brady, or by telephone, or by computer."

Over the past few weeks, Mizzou's future freshmen have been helping fine-tune the system at Summer Welcome. Their comments will help registration officials build computer help screens that will guide future users through the system.

The new system is just one more step in the right direction, Freie says. "There are few reasons with today's technology for students to even come to the registrar's office."

operation and two days to tear it down after the last course packet was handed out. The available technology simply didn't allow many options.

Not any more. Since 1985, MU students have been able to speed through registration at one of dozens of computer work stations set up in Brady Commons each semester. Beginning in 1993, students haven't even had to come in to Brady to register; they could sign up for classes by telephone.

And starting this summer they can register for classes from just about anywhere in the world. Registration at Mizzou has gone online.

Students who live in St. Louis, for example, can use the Internet and a special access code to plug into MU's

registration office. Or graduate students spending a semester overseas can check on course availability.

The system is called STAR-MU; the acronym stands for Students Terminal Access to Records. In addition to registering for classes, students have the option of paying academic fees by credit card, checking their enrollment status and changing class sections, among other features. Prospective students can request application forms and view books, and can even schedule campus tours.

Another new feature is called the Degree Audit System. It lets students check their progress toward graduation and reminds them of required courses. Students who are contemplating a change of major can see how much of their course



UM President George Russell, left, and Fred Hall, president of the Board of Curators, discuss the board's decision on Monday to extend Chancellor Kiesler's performance evaluation.

Nancy O'Connor photo

## Evaluation

Page 1

Of the board's 8-1 vote, Hall stressed that Curator John "Woody" Cozad's lone negative vote was a matter of principle. "He felt that the board might be sending the wrong message. That the board was flip-flopping on issues, that it couldn't make up its mind," Hall said. "I think the rest of us feel that the overriding necessity of making sure this process is fair is more important than any perception that this is a weak board."

Voting Monday for the first time as a new curator was Hugh Stephenson, a professor emeritus of surgery who retired last year from the School of Medicine. Gov. Mel Carnahan appointed Stephenson to the board last weekend to replace Curator David Collins of Macon, whose term had expired Jan 1, 1995.

President Russell, Curator Hall and Chancellor Kiesler all acknowledged that they had received calls over the weekend from Gov. Carnahan. "The governor was recommending that we make sure this process we were going through was a fair process," Hall said. "He had some doubts whether or not it was perceived by the general public as being fair, so in response to that Dr. Russell has recommended that we extend that period of review to make sure that there is no question but that the

process of review is a fair one."

Hall was asked by reporters if he felt the governor's action sets a precedent for his relationship with the board. "I feel the curators are still in charge," Hall said. "I think this resolution would have passed this morning regardless of any shifts" in board membership.

Kiesler disagreed with any perception that Gov. Carnahan had gone to bat for him. "I think the governor went to bat for his university to make sure that any decision that was made was a good, solid, rational decision," Kiesler said. "He was concerned about how fast it was being done."

The chancellor was asked by reporters how he viewed Russell's role. "My boss," Kiesler replied, and added that he thought their relationship was constructive. "He is the person who hired me; I think he correctly perceives me. We're a lot alike in some ways," the chancellor said. "At the same time we're both extremely busy people and I think it's fair to say we don't spend enough time together."

President Russell stressed that there are not personality differences between himself and Kiesler. "We have differences of opinion and we discuss them, debate them, argue about them, but there are not any personality differences between us," Russell said, and described the chancellor as a "very bright and able person."

Hall added that President Russell had

been supportive of Kiesler at board meetings. "Dr. Russell has tried not to let the situation become precipitous, has tried to slow that down and have an opportunity to resolve it," Hall said. He added that the board's relationship with the chancellor "has worked out well in some respects, but in some respects it hasn't. That's what we have to look at."

When asked if there was a possibility that Kiesler would continue to serve as chancellor after the next board meeting, Hall said, "That's a possibility." Russell agreed. "I think it's a real possibility, yes indeed," the president said. "That will depend on where we get to in our discussion. We wouldn't have a discussion if we didn't think that possibility existed."

Kiesler said he was "guardedly optimistic" about his prospects of continuing as chancellor. "The reason is that we have some time to discuss these issues outside of a pretty strong time frame," he said. "Then we can get down to the level of detail that some of these issues require."

Some of those issues include administrative and athletic budgets. Kiesler also said he may have misinterpreted the curators' reaction to his "unique niche" long-range planning strategy. "That's one of the things I hope we can discover in the process," he said.

"I think most of the thrust of what we are doing — with the possible exception of niche planning — are things that they like too. The overhaul of undergraduate education, continuous quality improvement, recruitment of students, treating the student as customer — all of these things I think everybody regards as very positive," Kiesler said. "Those in my mind are the critical issues."

MU faculty members have expressed concern about a revision of a UM System executive order that defines management duties at the University. The document is called Executive Order No. 1, and was

revised May 28 by Russell. It had last been revised in 1992.

Russell was asked at a news conference Monday if the revision of that order redirects responsibilities from chancellors to the office of the president. "It does not redirect," Russell said. "First of all it lays down the philosophy of how we will manage the University. Then it lays down in no uncertain terms the basic, fundamental responsibilities of each officer."

Russell also said that in his letter that accompanied the revised directive, he stressed that individuals have to pull together for optimum efficiency and good management. "Executive Order No. 1 has been out there for years. If you look at it, it's changed and changed and changed," the president said.

Those responsibilities assigned to the chancellors, Russell said, include academic programs, fund raising and student affairs, among others. "When it comes down to legal matters, to financial matters, to that sort of thing, those are handled at the corporate level," he said. "That's all we're trying to do, straighten those things out."

Copies of the executive order are available from the MU Faculty Council office.

President Russell said that over the next month he will continue to evaluate Kiesler's performance. "I think we will look at practically everything that has to deal with performance," he said. Areas he concentrates on in evaluations are academic and administrative leadership, financial management, interaction with colleagues and support of board policies as interpreted by the president.

Curator Hall said chancellors are expected to use resources wisely and effectively "so we get as much down in the classroom, as much money down on the firing line of delivering education as we can." He called Russell's five-year plan "one of the finest financial reorganizations that has occurred in American higher education."

"It's the University that's important," Russell said. "Presidents come and go, chancellors come and go. The real thing is what can we do that's best for the University, that's the thing that's uppermost in our minds."

### Is this how you feel?

Do you have data to analyze, manipulate or research, but it is not in machine-readable form? The B&PA Research Center can solve your problem and we can do it now.

We provide experienced data entry services for colleges, departments, faculty and students.

This service consists of entering and verifying coded data, surveys or forms. Our verification process consists of entering



the data twice which results in 100% accuracy. Also, the Center can transfer your entered data to various forms of media, such as magnetic tape or cartridge, floppy disk or mainframe. The data can then be used in various software packages like Wordperfect, Lotus, Excel, SAS and others.

For a free estimate, call Pat at (573) 884-6526.

## Summer Workshops MSA-GPC Craft Studio

lost wax-casting-jewelry  
black and white photography  
handbuilding clay  
pot throwing  
stained glass-copperfoil  
leatherwork

Classes begin June 17 & June 24

Contact the Craft Studio at 882-2889 for more info.  
• located at 203 Brady Commons •

MSA  
GPC

**NO CLASSES JULY 5**

The Office of Admissions and Registrar reminds the campus community that there will be no classes on Friday, July 5 following the Independence Day holiday. The first four-week summer session ends at 5 p.m. July 3. For the second four-week summer session, both registration and the first day of classes are July 8.

**NEW LIBRARY SYSTEM IS ONLINE**

The MU Libraries announce the arrival of MERLIN, the new integrated library system for the University of Missouri Libraries. MERLIN is an acronym for Missouri

Education and Research Libraries Information Network. It will replace the LUMIN online catalog system which has been in place for more than a decade.

The new MERLIN system will expand sources beyond the online catalog to include the Ovid databases (PsycInfo, Medline and 10 others) and SiteSearch, which provides access to Current Contents.

On the MU campus, MERLIN also will include full-text articles from the Infotrac 2000 database. The MERLIN system can be accessed through telnet at merlin.missouri.edu

With questions, call the Ellis Library reference desk at 882-4581.

**HELP US TELL MU'S STORY**

MIZZOU magazine staff writers are compiling information for a feature story for MIZZOU, the alumnus magazine for MU. We're searching for examples of MU's major contributions to: medicine, agriculture, the hard sciences, performing and visual arts, and literature, among others.

Some examples of those contributions include the discovery of the antibiotic aureomycin at Sanborn Field and the MU research on grape diseases that saved the French wine industry. Contact MIZZOU with the name of the contribution and individuals who would be good sources of information. Please mention any interesting photos or artwork you may have seen.

You can fax your suggestion to 882-7290, mail it to MU Publications, 407 Reynolds Center, or e-mail editor Karen Worley at remksw@muccmail@edu.

**LET'S SEE SOME ID**

Earlier this month, MU's ID Card Office moved from 13 Jesse Hall to the University Bookstore in Brady Commons. Faculty, staff and students who need new or replacement ID cards should come to the new location at the back of the bookstore's trade book area. The telephone number remains the same: 882-1871.

**Faculty voice support for Chancellor Kiesler**

Faculty at MU were encouraged by the Board of Curators' action Monday to delay any decision on Chancellor Charles Kiesler's status.

"There is no way that it would not be regarded as a positive step. I think this represents an opportunity maybe to step back from the confrontation," said Faculty Council Chairwoman Patricia Plummer. "We have very intelligent people — the board, the president, the chancellor — who all want what is best for the University."

At a general faculty meeting last Thursday, more than 250 MU faculty members passed a resolution that expressed confidence in Kiesler's "academic leadership and vision." The resolution asked curators to delay indefinitely any decision about the chancellor's status and to "clarify the lines of authority, roles and responsibilities between UM, MU and the board."

Ed Metzen, professor and chairman of consumer and family economics, characterized the atmosphere at MU in recent years as upscale and upbeat. "I think we all feel the pressure to meet

standards, to be productive, but in a positive way. I think there's a sense of pride inside the institution among faculty and, perhaps even more important, among students," Metzen said.

"This is not a canning factory or assembly line in which somebody lays out blueprints for what faculty are to do day by day. This is an enterprise in which faculty are central to what the institution is all about."

As the Faculty Council's observer to board meetings, Gary Allee said he has watched the chancellor's interaction with curators. "I think one of the roles the faculty expect of a chancellor is to be an advocate for this campus. I think that's what Chancellor Kiesler has done," said Allee, professor of animal science.

"We are much different than the other campuses in our system. We have by far the vast majority of the undergraduate enrollment, and the Research 1 institution that we are makes us different," Allee said. "As faculty we expect our chancellor to speak up and try to help the board understand the very complex issues that they're sometimes faced with.

I think the chancellor has done that in a very professional manner."

Kit Salter, professor and chairman of geography, questioned whether MU perhaps is being penalized because it has been too successful. "Academics are not trained to be team players. We're taught again and again to find new areas that need to be dealt with and we do those things," Salter said.

"We do them at Missouri with some good success, and then suddenly someone says, 'Well, you're not a team player. You're too successful; you're doing too well. Let's dump you and spend 15

months trying to find somebody new who will be a team player and lead us back to mediocrity.'"

Chancellor Kiesler has created "an environment of security around here in which we can do our work," said Jean Hamilton, associate professor of textile and apparel management.

Several faculty members downplayed what some perceive as the chancellor's brusque personality. "Kiesler is a little bit in-your-face for mid-continent U.S.A., but that's a good thing, not a negative thing," said Don Sievert, professor of philosophy. "He has said, 'Let's look at the good things we do and focus our energies on those.' I would disagree with him on a number of things, but that's not the issue

See Support, Page 5

Professional → Photography  
featuring the

**FULL RANGE** of creative photographic services

Location & Studio photography

**CUSTOM PRINTING**

digital photographic enhancement and **(SPECIAL EFFECTS)** for slides or publications

→ **Photographic Services**

Academic Support Center, 505 E. Stewart Rd  
**882-3606**

**New** You Asked for Them...  
We Got Them!

**Acetate Rolls**  
Write-On Transparency Rolls  
for Overhead Projectors

**Stk #0121U**  
**Sold by the Roll**  
**\$4.14/Roll**  
**Clear film • 10.5" x 50'**

**General Stores:**  
Proudly Serving University Departments  
**882-6906**

# Barbero receives international award

**G**iulio J. Barbero, professor emeritus of child health, has received the highest honor awarded in the field of cystic fibrosis. Barbero is the first clinician to receive the Abraham Levi Award, which was presented at the 12th International Cystic Fibrosis Conference in Jerusalem last weekend. He is considered one of the "founding fathers" in the study of CF, a genetic disease that affects the respiratory and digestive systems of children and usually leads to death in childhood or

early adulthood. He became known in the 1950s for his research activities and for his interest in educating health-care workers about the disease. In recent years he has led efforts in Latin America to improve both professional education and diagnosis of CF.

As part of the award, Barbero delivered a lecture on the humanity of CF, a topic from which he can draw upon 50 years of experience. "It's very different living through a disease than it is looking at it," he said. "A great deal of knowledge

comes from looking at things in science, but an equal amount of knowledge comes by living through it. Lots of listening..."

Barbero is one of the founders of the Cystic Fibrosis Foundation. In addition to funding research, the foundation helped develop 120 CF centers across the country, including the one at the MU Health Sciences Center, to make quality care more accessible to patients.

In recent years he has dedicated much of his time to help recruit and support young CF researchers.

## Parking & Transportation Services

Turner Avenue Garage  
Level 2  
882-4568

Contracts have been awarded for summer paving on a number of driveways/entrances and the following parking lots: HSC6, RC8 and RP4. As each lot is closed for improvements, permit holders will be notified of alternate parking areas.

## CLASSIFIEDS

### SERVICES

COUNSELING/PSYCHOTHERAPY  
Marital, relationship, personal, educational, vocational; 25 years' experience with faculty, staff, students. Sliding fee scale. Don Eggeman, psychologist, 1205 University Ave. (next to parking garage), Suite 400. 449-6190

PhD in English with 20 years' college teaching, experienced in editing, will edit books, proposals, dissertations, articles, major papers or presentations. For appointment, call 573-445-6690.

### FOR SALE

MOVING SALE: Sat., June 29, 7 a.m. Sports collectibles; Lenox, Fostoria, other glassware; books; Christmas; more. Stadium north from I-70 to Primrose. Left on Sunflower. Right on Barberry. 1908 Mayberry at Barberry.

HAMMOCKS for sale. Double wide: 5' x 7' bed with solid oak stretcher bars. This weekend at a Columbia Mall aisle kiosk OR call Ivy at 445-8912 and leave a message. \$70

1993 CHEVY ASTRO VAN. 32K miles. \$12,900. 442-5028

### FOR RENT

HOUSE FOR RENT: Three bedrooms, two full baths, jetted tub, fireplace, family room, formal dining, living room, two-car garage. Walk to Fairview School. Available now. 449-7523

AVAILABLE AUGUST: Prairie Meadows Townhouses - brand new 2-bdrm units geared toward the professional or graduate student. 1 1/2 baths, garage, just off US63 south - easy 10-minute drive to campus. 573-446-6268

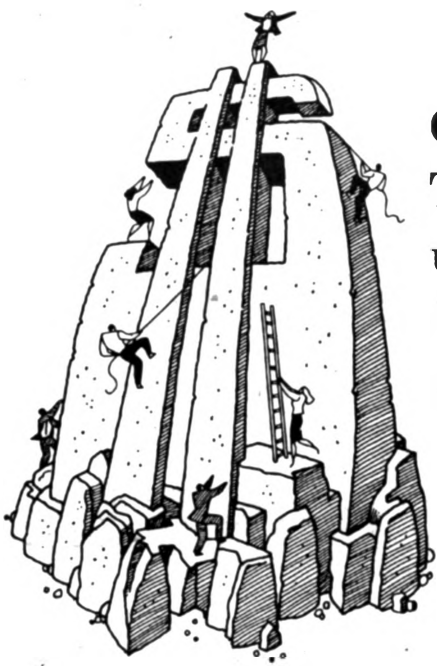
The Classified Advertising Section is open only to faculty and staff members and retirees. A home phone number is required in all classified ads. No refunds will be given for cancelled ads.

Ads must be typed.  
Rates: 30-word maximum \$5.

Publication deadlines:  
July 5 for July 11 issue  
July 19 for July 25 issue

Mizzou Weekly Classifieds: Make your check payable to University of Missouri and send to: Mizzou Weekly, 407 Reynolds Center, Attention: Tanya Stitt.

# AT MIZZOU CREDIT UNION...



## Convenience. Reliability. Personal service.

These qualities mean a lot to you, and everything to us. That's why we're expanding our Columbia office to better meet your needs. Soon, the tellers, member service and loan departments will be more convenient and accessible. We look forward to serving you better with our new expansion.

## WE'RE MAKING CHANGE FOR YOU.

1st & Broadway P.O. Box 1795 Columbia, MO 65205-1795

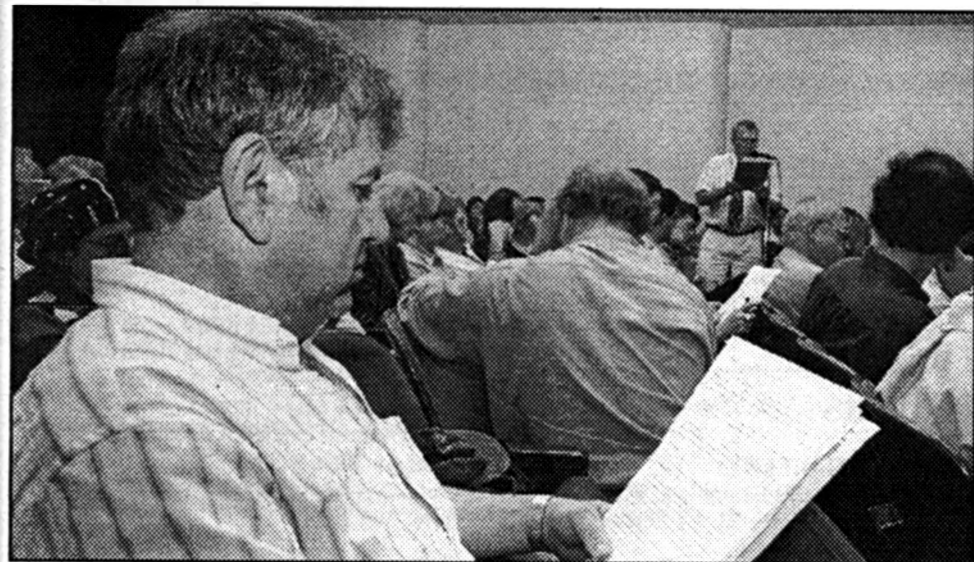
Phone: (573) 874-1477 or 1-800-451-1477 Fax: [573] 874-1300

Faculty, staff, students and their families are eligible to join. Call for membership eligibility information.



MIZZOU  
CREDIT  
UNION®

...meeting our members' needs



Nancy O'Connor photo

Elias Saab, professor and chairman of mathematics, read a letter of support for Chancellor Kiesler from the math department at last Thursday's general faculty meeting.

were enjoying perhaps the greatest year the University has ever had in the 35 years I've been here. We have tremendous support from the state, from the legislature and from the people of Missouri. We have superb students; Mizzou faculty hires have been outstanding.

"I think out of this meeting should come something positive — to restore the University to true faculty governance and carry forward with our mission."

At a Monday news conference, Kiesler said he was impressed by the response of

faculty. "Not just faculty, but staff, students and alumni as well. It says a lot of good things about our university. It says a lot of people are aware of what is going on here and what our aspirations are," the chancellor said. "This is love of the University."

Board President Fred Hall was asked Monday if curators planned to consult with faculty about the evaluation process over the next month.

"There have been no discussions on that. I suspect there will be discussions between Dr. Russell and the faculty on occasion," Hall said. He noted that Russell is usually invited to attend meetings of the Intercampus Faculty Council. "I'll bet dollars to doughnuts that issue comes up."

## Support

Page 3

here. We're much better with him than without him."

Other faculty expressed hope that a positive outcome would emerge from discussions between Kiesler and the UM System leadership. "Most of us were blindsided on this event," said John Bauman, professor of chemistry. "We

Save 20% on everything we sell!

\*excluding textbooks and special orders

June 24th & 25th

GREAT FOR YEAR END DEPARTMENTAL ORDERS!



Main Level Blair Hall  
882-9911  
Open M-F: 8-5  
Sat: 10-4  
University Owned and Operated  
Closed for inventory June 28 & 29th

## Make a Note:

University Bookstore will be closed for inventory June 29th

Center Court will be closed June 28 & 29th

Computer Spectrum will be closed June 28 & 29th



Cap & Gown Rental Deadline for Summer Commencement and Explore Mizzou:

**JULY 8TH**

**UNIVERSITY BOOKSTORE**



University owned and operated since 1899.

Main Level Brady Commons  
882-7611 TDD: 882-3985  
Mon-Fri: 8-5, Sat: 10-3 (some exceptions apply)

MU Faculty/Staff/Retirees save 10% on almost everything sold at UBS!

**MIZZOU**  
WEEKLY

Volume 17 Number 30

A publication for University of Missouri-Columbia faculty and staff, published every Thursday during the academic year and twice a month during the summer by Publications and Alumni Communication, a department of University Affairs, 407 Reynolds Alumni and Visitor Center, 882-7357. News deadline is noon Thursday the week before publication. Annual subscriptions are available for \$20.

Interim editor: John Beahler  
Interim graphic editor: Sue Richardson  
Director of advertising: Tanya Stitt  
Staff writers: Sara Grier, Sue Richardson  
Student assistants: Christie Studdard



Printed with soy 90 percent to 100 percent post-consumer waste.



**PRINTED WITH SOY INK**

## Is it too heavy to move?



We'll move it for you!

Call 882-6561 to schedule movers with the Campus Facilities Building Services department. We'll pick up the load for you.

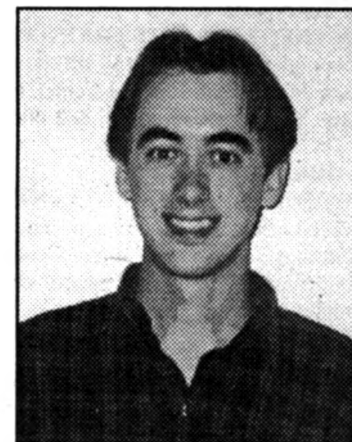


Hearnes Center/Jesse Auditorium

# MAY Employee of the Month

**Matt Bolen**

Matt works in the Mizzou Ticket Office and has a friendly team-oriented attitude. He deserves this recognition for his excellent customer service and dedication. Matt is knowledgeable and responsive to questions asked by our patrons. Thanks for doing such a wonderful job. **CONGRATULATIONS!**



## Concerts & Plays

**Saturday, June 22**  
**SUMMER REPERTORY THEATRE:** *42nd Street* will be presented at 8 p.m. in Rhynsburger Theatre today and June 27, 28, July 4, 10, 13, 17, 20, 25 and 27. For ticket information, call 882-PLAY.

**Sunday, June 23**  
**SUMMER REPERTORY THEATRE:** *42nd Street* will be presented at 2 p.m. in Rhynsburger Theatre today and July 21. For ticket information, call 882-PLAY.

**Saturday, June 29**  
**SUMMER REPERTORY THEATRE:** *A Streetcar Named Desire* will be presented at 8 p.m. in Rhynsburger Theatre today and July 3, 5, 11, 16, 19 and 24. For ticket information, call 882-PLAY.

**Sunday, June 30**  
**SUMMER REPERTORY THEATRE:** *A Streetcar Named Desire* will be presented at 2 p.m. in Rhynsburger Theatre today and July 14. For ticket information, call 882-PLAY.

**Saturday, July 6**  
**SUMMER REPERTORY THEATRE:** *All in the Timing* will be presented at 8 p.m. in Rhynsburger Theatre today and July 9, 12, 18, 23 and 26. For ticket information, call 882-PLAY.

**Sunday, July 7**  
**SUMMER REPERTORY THEATRE:** *All in the Timing* will be presented at 2 p.m. in Rhynsburger Theatre. For ticket information, call 882-PLAY.

## Conferences

**Friday, June 28**  
**MARRIAGE & FAMILY THERAPY CONFERENCE:** "Innovative Approaches to Critical Issues" will be offered June 28-29 at the St. Louis Airport Marriott. For cost and registration information, call (314) 644-8803.

**Friday, July 19**  
**NURSING CONFERENCE:** "PICC Line Insertion and Management" will be offered from 7:30 a.m.-4 p.m. at Best Western. For cost and registration information, call 882-0215.

**Tuesday, August 13**  
**NURSING CONFERENCE:** "PICC Line Insertion and Management" will be offered from 7:30 a.m.-4 p.m. at Best Western. For cost and registration information, call 882-0215.

## Courses

**Tuesday, June 25**  
**LAW ENFORCEMENT TRAINING:** "Narcotics Enforcement I" will be offered June 25-27 at the Hearnes Center. Cost: \$200. For information, call 882-6021.

**Wednesday, July 3**  
**NEW EMPLOYEE ORIENTATION:** Course will be offered from 8:30 a.m.-noon in Columns 3, Reynolds Alumni Center. The course is open to all new benefit-eligible employees.

**Wednesday, July 17**  
**NEW EMPLOYEE ORIENTATION:** Course will be offered from 1:30-5 p.m. in Columns 3, Reynolds Alumni Center. The course is open to all new benefit-eligible employees.

**Monday, July 29**  
**LAW ENFORCEMENT TRAINING:** "LETI Firearms Instructor's School" will be offered from 8 a.m.-5 p.m. July 29-Aug. 2 at the Hearnes Center. Cost: \$450. For

information, call 882-6021.

**Wednesday, August 7**  
**NEW EMPLOYEE ORIENTATION:** Course will be offered from 8:30 a.m.-noon in T.O. Wright room, Reynolds Alumni Center. The course is open to all new benefit-eligible employees.

**Monday, August 12**  
**LAW ENFORCEMENT TRAINING:** "Instructor Development School" will be offered from 8 a.m.-5 p.m. Aug. 12-16 at the Hearnes Center. Cost: \$400. For

information, call 882-6021.

**Wednesday, August 21**  
**NEW EMPLOYEE ORIENTATION:** Course will be offered from 1:30-5 p.m. in Columns 3, Reynolds Alumni Center. The course is open to all new benefit-eligible employees.

## Exhibits

**BINGHAM GALLERY:**  
•"Sculptural Alumni Exhibition" will be on display through July 12. A reception will be

held from 4-6 p.m. June 21.  
•"Landscapes with Trees: Observations of the Real and Romantic in Nature," an MFA thesis exhibit of paintings by Patricia Kreps, will be on display July 15-19. A reception will be held from 4-6 p.m. July 19.  
•"Microcosm," an MFA thesis exhibit of paintings by Philip Michael Hook, will be on display July 22-26. A reception will be held from 4-6 p.m. July 26.  
•An MFA thesis exhibit of paintings by Kathryn Torre will be on display July 29-Aug. 2. A reception will be held from 5-7 p.m. Aug. 2.

# Announcing University Physicians-Fairview Primary Care Clinic

University Physicians is proud to announce the opening of University Physicians-Fairview, its new primary care clinic conveniently located just south of Broadway and Fairview Road.

University Physicians-Fairview offers quality medical care provided by six physicians. All six physicians are board certified in Internal Medicine, and some have additional clinical interest in geriatric medicine.

Internal medicine physicians are primary care physicians who are trained to recognize and manage a wide variety of adult medical problems and to provide long-term continuous care throughout a patient's life.

University Physicians-Fairview is open 8 a.m. to 5 p.m., Monday through Friday. Plenty of free parking is available. New patients are welcome. To schedule an appointment with one of the physicians, please call (573) 882-4464.

## Join University Physicians-Fairview Saturday, June 29

### Open house

10 a.m. to 11 a.m.  
Meet the physicians, tour the facilities, enjoy refreshments and register for door prizes.

### Free medical consultations

11 a.m. to 1 p.m.  
Internal medicine physicians will answer your health-care questions. The 10-minute consultation is free, but appointments are necessary. Call 882-6565.



**Richard Burns, M.D.**  
Board certified in Internal Medicine. 1993  
Clinical interests: Adult internal medicine, geriatric medicine



**Sharon Carmignani, M.D.**  
Board certified in Internal Medicine. 1981.  
Clinical interests: Geriatrics. 1992  
Clinical interests: General internal medicine, geriatrics



**James Koller, M.D.**  
(joins staff Aug. 1)  
Board certified in Internal Medicine. 1995  
Clinical interests: Hypertension, hyperlipidemia



**Julie Stansfield, M.D.**  
Board certified in Internal Medicine. 1995  
Clinical interests: Preventive adolescent and adult medicine, asthma



**Jan Swaney, M.D.**  
Board certified in Internal Medicine. 1985.  
certificate of added qualifications in geriatrics. 1994  
Clinical interests: General internal medicine, geriatrics



**Paul Tichenor, M.D.**  
Board certified in Internal Medicine. 1990  
Clinical interests: General internal medicine

*Discover what  
sets us apart*

 **University  
Physicians**  
*The Staff for life*

The gallery, located in the Fine Arts Building, is open from 10 a.m.-4 p.m. weekdays.

**BRADY COMMONS GALLERY:**

- Prints by Julie Hoban will be on display June 24-July 3.
- Paintings and drawings by Chris Teeter will be on display July 8-18.
- Paintings by T.R. Edwards will be on display July 22-Aug. 1.

The Brady Gallery, located in 203 Brady Commons, is open from 10 a.m.-5 p.m. weekdays.

**MUSEUM OF ANTHROPOLOGY:** The museum, located in Swallow Hall, is open from 9 a.m.-4 p.m. weekdays.

**MUSEUM OF ART & ARCHAEOLOGY:**

Ongoing exhibits:

- "The Saul and Gladys Weinberg Gallery of Ancient Art"
- "Byzantine and Early Christian Gallery"
- "European and American Gallery"
- "Expressions of Africa"
- "Isms and Others in the Twentieth Century III"
- "The Kress Study Collection"
- "Greek and Roman Crafts: Metalwork, Textiles and Pottery"
- "Echoes of Ancient America: Art from Lost Civilizations of the New World" will be on display through Sept. 15.
- "Primarily Colors" will be on display through Sept. 22.
- "Collection Connections" will be on display June 22 through Sept. 22.

The museum, located in Pickard Hall, is open from 9 a.m.-5 Tuesday through Friday, 6 p.m.-9 p.m. Thursday, noon-5 p.m. Saturday and Sunday. Closed Mondays and national holidays.

**ROGERS GALLERY:** The gallery, located in 148 Stanley Hall, is open from 8 a.m.-4 p.m. weekdays.

**STATE HISTORICAL SOCIETY:**

- Thomas Hart Benton's original illustrations for Mark Twain's novel *The Adventures of Tom Sawyer* are on display in the gallery through early September.

• "Three Noted Editorial Cartoonists: S.J. Ray, Tom Engelhardt and Rube Goldberg" is on display in the north-south corridor through early September.

• "Decades: 1886 to 1996, Editorial Cartoons" is on display in the east-west corridor.

The gallery is open 8:30 a.m.-4 p.m. weekdays. The corridors are open from 8 a.m.-4:30 p.m. weekdays and 9 a.m.-4:30 p.m. Saturday.

**UNIVERSITY HOSPITALS AND CLINICS:**

Paintings by Diane Huneke and Dan Marks, and sculpture by Heather Foote will be on display in the lobbies of University Hospital and Clinics and Ellis Fischel Cancer Center through June 30 as part of Art for Life.

**Lectures & Seminars**

**Wednesday, June 26**

**MIDDAY GALLERY EVENT:** Christine C. Neal, curator of European and American Art and Debra Page, graduate assistant, will present "Collections Connections . . . and More" at 12:15 p.m. at the Museum of Art and Archaeology in Pickard Hall.

**Wednesday, July 10**

**MIDDAY GALLERY EVENT:** Robert Bussabarger, professor emeritus of art, will present "A Ceramic Mural for Korea" at 12:15 p.m. at the Museum of Art and Archaeology in Pickard Hall.

**Wednesday, July 17**

**MIDDAY GALLERY EVENT:** Aimee Leonhard, assistant conservator, will present "The Role of a Museum Conservator: Stabilization and Interpretation" at 12:15 p.m. at the Museum of Art and Archaeology in Pickard Hall.

**Wednesday, July 24**

**MIDDAY GALLERY EVENT:** Debra Page,

graduate assistant, will present "There is No Place Like Cyberspace for Utopia" at 12:15 p.m. at the Museum of Art and Archaeology in Pickard Hall.

**Meetings**

**Thursday, June 20**

**FACULTY COUNCIL:** Will meet at 3:40 p.m. in S110 Memorial Union.

**TOASTMASTERS:** Will meet from 4-5 p.m. in Room 1W19 University Hospital and Clinics. For information, call Vickie Stokes at 882-2239.

**Thursday, July 11**

**STAFF ADVISORY COUNCIL:** Will meet at 1:15 p.m. in N243 Memorial Union.

**Thursday, July 18**

**TOASTMASTERS:** Will meet from 4-5 p.m. in Room 1W19 University Hospital and Clinics. For information, call Sue Austin at 882-1492.

**Thursday, July 25**

**FACULTY COUNCIL:** Will meet at 3:40 p.m. in S110 Memorial Union.

**Thursday, August 1**

**TOASTMASTERS:** Will meet from noon-1 p.m. in Room 1W19 University Hospital and Clinics. For information, call Sue Austin at 882-1492.

**Thursday, August 15**

**TOASTMASTERS:** Will meet from 4-5 p.m. in Room 1W19 University Hospital and Clinics. For information, call Sue Austin at 882-1492.

**Thursday, August 22**

**STAFF ADVISORY COUNCIL:** Will meet at 1:15 p.m. in M558 Medical Sciences Building.

**Special Events**

**IMMUNIZATIONS:** Tetanus and Diphtheria Immunizations for ages 13 and up, will be offered on a walk-in basis from 10 a.m.-6 p.m. Monday through Saturday throughout the summer at the Health Information Center in Columbia Mall. Cost \$5. For information, call 882-6565.

**NUTRITION:** A "Healthy Barbecue" display will offer recipes and healthy ideas for the grill until June 22 at the Health Information Center in Columbia Mall.

**Friday, June 21**

**SAFE SITTER PROGRAM:** Training sessions for teens will be offered from 9 a.m.-4 p.m. June 21-22 at the Old Alumni Center on Francke Drive. The program will be offered again July 23-24 and July 25-26. Cost: \$30. For registration information, call 882-6565.

**Tuesday, August 6**

**ART & ARCHAEOLOGY YOUTH PROGRAMS:**

- "Red-Hots and Lemon Drops!" will be offered from 9-10:30 a.m. Aug. 6 and 8 at the Museum of Art and Archaeology in Pickard Hall. This program is for children ages 6-8.
- "Tickle Me Pink!" will be offered from 11 a.m.-12:30 p.m. Aug. 6 and 8 at the Museum of Art and Archaeology in Pickard Hall. This program is for children ages 9-12. Cost: members \$3/child, non-members \$5/child. For registration information, call 882-3591. Enrollment deadline: July 26.

**Friday, August 19**

**SAFE SITTER PROGRAM:** Training sessions for teens will be offered from 9 a.m.-4 p.m. Aug. 19-20 at the Old Alumni Center on Francke Drive. The program will be offered again Aug. 26-27. Cost: \$30. For registration information, call 882-6565.

Campus Computing

# Short Courses?

Wondering about Campus Computing Training courses? None are scheduled at this time, but we haven't shut down for the summer. Keep watching the *Mizzou Weekly* and the Training Group web pages (see below) for updates. If you cannot connect to the World Wide Web, or if you need help doing so, please call 882-6006 for more information.

---

**SHORT COURSES:** No classes are scheduled at this time. However, please keep in mind that consultations and departmental sessions are still available to you. Keep an eye on our web site, as schedules are updated here first. Contact Prima Wagan, Training Coordinator, at 882-2000 if you have any questions.

**FOCUS ON FACULTY:** Contact Prima Wagan, Training Coordinator, at 882-2000 to make arrangements for faculty workshops during the summer months.

**CATS CLASSES:** No courses are scheduled at this time. Watch the *Maneater* or the Training Group web pages for updates. Please contact 882-6006 if you have any questions.

**CAMPUS COMPUTING LIBRARY:** A small collection of computer-based training (CBT) modules on applications are available for check-out. The tutorial collection is designed to serve the needs of faculty, staff, and students in terms of providing additional training to our regularly scheduled courses. The collection includes modules on WordPerfect for DOS, WordPerfect for Windows, Microsoft Word, Macintosh FileMaker Pro, Microsoft Excel and Lotus 1-2-3. Contact the Campus Computing librarian at 882-2000, or check out the Library's Home Page for further information.

**Training Group Home Page:**  
<http://www.missouri.edu/~cctrain/>

**Campus Computing Library Home Page:**  
<http://www.missouri.edu/~cclibwww/>

**Training Course Descriptions:**  
<http://www.missouri.edu/~cctrain/course.html>



Offer good after 10 a.m.

# \$2.99 VALUE MEAL

**Get your burger's worth.**

**1**

**WHOPPER™**  
regular french fries, and a 20 oz. soda.

**2**

2 Cheeseburgers, regular french fries, and a 20 oz. soda.

**3**

Mega Doublecheese, regular french fries, and a 20 oz. soda.

**BRADY**  
FOOD COURT  
in Brady Commons

Also Featuring..







**Summer Hours: 7 a.m. - 5 p.m. Mon. - Fri.**

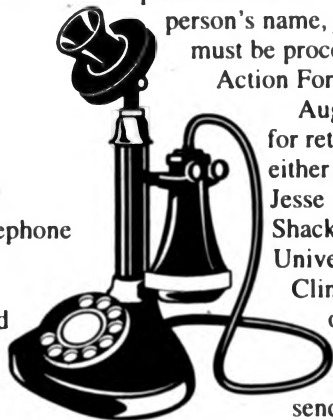
# Hold the phone

Revised departmental and office listings for the 1996-97 campus telephone directory are due. Send them to production coordinator, telephone directory, 407 Reynolds Alumni and Visitor Center.

## FACULTY-STAFF LISTINGS

Information for the alphabetical listings in the faculty-staff section of the telephone directory comes from the campus and hospital payroll-personnel data bases. Names, titles, departmental addresses and phone numbers, and home addresses and phone numbers will be pulled in mid-September for employees whose full-time equivalence at MU is 75 percent and above.

All updates to campus or home address and telephone numbers can be made on Change of Address or Personal Data



forms. These forms also are used to restrict the listing of home addresses and phone numbers. Any changes in a person's name, job title or in FTE must be processed on a Personnel Action Form.

Aug. 30 is the cutoff date for returning these forms either to Jim Robinson, 16 Jesse Hall, or Janet Shackelford, 1W41 University Hospital and Clinics. Do not send originals or copies of these forms to the publications office; send them directly to the payroll offices.

Staff who have restricted their home listings in previous directories do not need to submit a new form each year.

## WHO IS RESPONSIBLE FOR EMPLOYEES LESS THAN 75 PERCENT FTE?

Each unit/office is responsible for providing to the directory's production coordinator a list of employees who need to be included in the faculty-staff section but might not be pulled from the data

bases in September.

These people include:

- key part-time personnel who are less than 75 percent FTE

- military, medical, USDA or other federal employees who have campus appointments but are paid primarily from non-university funds

- professors emeriti who have offices on campus

Send an alphabetical listing of these people to the publications office by July 19.

## ABOUT E-MAIL

A current directory of MU students, faculty and staff, including e-mail address, is available on-line. To access it, point your World Wide Web browser to:

<http://www.missouri.edu/cgi-bin/phf>

Phil Leith at Campus Computing offers the following tips for correcting data in the on-line directory.

- Faculty and Staff:

To change an e-mail address or to record a preferred name, select the "request change" button on the on-line directory page.

To correct any information other than the e-mail address, fill out a UM Form 272

(Personal Data Form) and submit it to Payroll at 16 Jesse.

- Students:

Students can update their physical address and phone number by using Star MU, a new application located on the Supersession menu at UMMVSB.MISSOURI.EDU. This allows students to maintain, change and view their address and telephone information by using their student ID and Personal Identification Number.

The application can be accessed by selecting Star MU from the Registration home page or directly at: [http://www.missouri.edu/~regwww/star\\_MU](http://www.missouri.edu/~regwww/star_MU)

Students cannot override which address is published, but they can redirect mail to another address with the forwarding mechanism of the e-mail system(s) they use. If a student has more than one e-mail address, the Showme address will be given precedence over a Mizzou1 address.

With questions about e-mail, call the Campus Computing Help Desk at 882-5000, or e-mail [helpdesk@showme.missouri.edu](mailto:helpdesk@showme.missouri.edu)

# Ellis Library Copy Service's Summer of Fun

When the heat has you beat and all you've got is a lunch break, take your feet to one of these fantastic campus attractions.



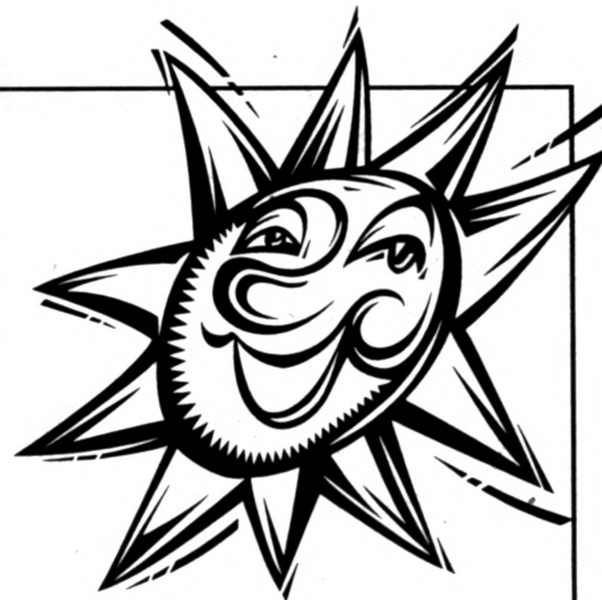
## Buck's Ice Cream

Located in Eckles Hall  
open noon to 5 p.m.  
Monday thru Friday  
Try MU's own flavor - Tiger Stripe!



## Museum Of Anthropology

Located in Swallow Hall  
open 9 a.m. to 4 p.m.  
Monday thru Friday  
Explore 10,000 years of history!



This summer fun update is brought to you by

## Ellis Library Copy Service

Full Color Copies • Fax Service • 18 Colored Paper Choices

115 Ellis Library Columbia, MO 65201-5149 Phone: (573) 882-7262 Fax: (573) 884-5004

<http://www.missouri.edu/~elliswww/>

**MIZZOU**  
WEEKLY

University Libraries  
University of Missouri

### Digitization Information Page

Local identifier                      MizzouWeekly(print)

### Source information

Format                                      Newspaper  
Content type                                Text with images  
Source ID                                   Duplicate copies University Archives weeded out  
Notes

### Capture information

Date captured                              July-December, 2022  
Scanner manufacturer                    Plustek OpticBook  
Scanner model                              A300 Plus  
Scanning system software                Book Pavilion  
Optical resolution                         600 dpi  
Color settings                              8 bit grayscale for majority of pages;  
    24 bit color for color illustrations/portraits/photographs  
File types                                    tiff  
Notes

### Derivatives - Access copy

Compression                                Tiff: LZW compression  
Editing software                            Adobe Photoshop 2022  
Resolution                                   600 dpi  
Color                                         same as captured  
File types                                    pdf created from tiffs  
Notes                                         Images cropped, straightened, and brightened.