

# MIZZOU WEEKLY

The University of Missouri-Columbia

Sept. 26, 1980

## Inside

Affirmative Action Plan  
page 3

Staff Council elections  
page 1

Staff benefits open enrollment  
page 2

New work policy  
page 2

## UMC finishes plan for affirmative action

The federally required Affirmative Action Plan for UMC has been completed, according to Ruth Jones, interim director of equal opportunity.

The plan, more than 1,200 pages in length, includes:

✓ An employment profile for all full-time faculty and staff of UMC. This profile (those on faculty or staff as of Oct. 31, 1979) includes detailed breakdowns by job category and department.

✓ Availability data on the numbers of persons (according to Labor Department guidelines) who form a pool of available protected group members — females, blacks, other minorities.

✓ A comparison of the present employment profile and the availability data to determine whether or not a specific job category is "underutilizing" protected class members.

"A comparison of present status and availability data does not necessarily draw the full picture," says Chancellor Barbara Uehling. "For example, if we find that a department does not have an underutilization, that does not mean that department should stop pursuing the spirit of affirmative action hiring.

"Also, we should remember that higher education requires rather strong limitations on those who can be included in the availability pool. UMC strives for greater utilization of protected classes but must also take into account stringent educa-

tional requirements necessary to continue the quality of teaching we must maintain."

The plan, compiled according to guidelines established by the Office of Federal Contracts and Compliance Program in the U.S. Department of Labor, is for the period from Nov. 1, 1979 to Oct. 31, 1980.

"The plan is a guide," says Jones. "It's a report to help us take a look at ourselves and see where we need to go."

Jones had overall responsibility for the Affirmative Action Plan with assistance from Associate Provost Larry Clark on the UMC faculty section.

Jones explains that underutilization refers to the employment of protected group members in a job category at a rate below their availability in the labor market. The goals are arrived at through a mathematical analysis of employees in the department and the availability of protected groups in the appropriate workforce.

For instance, if 20 percent of the workforce in a category is black, the department's goal would be to strive for the same percentage balance.

The time set for reaching the goal is determined by projected vacancies and turnover trends in the area.

"The plan is a guide to the personnel office and departments doing the hiring," says Jones. "It doesn't mean we have to

(Continued on page 3)

## Six Staff Council positions open

Six positions are up for election this year on the Staff Advisory Council: one each in the technical/paraprofessional and secretarial/clerical classifications and two each in the administrative/professional and crafts/maintenance classifications.

Members are elected for three-year terms.

To nominate a staff member for a council seat, fill out the form on the right and send it through campus mail by Oct. 17 to Election Committee Chairman Ron Haffey, 108 Veterinary Clinic.

Nominations may also be made by submitting the information called for in the form on a plain sheet of paper, Haffey says; the nominator may sign the nomination form if he or she wishes, but it is not mandatory.

Self-nominations and nominations across job classification lines will be accepted.

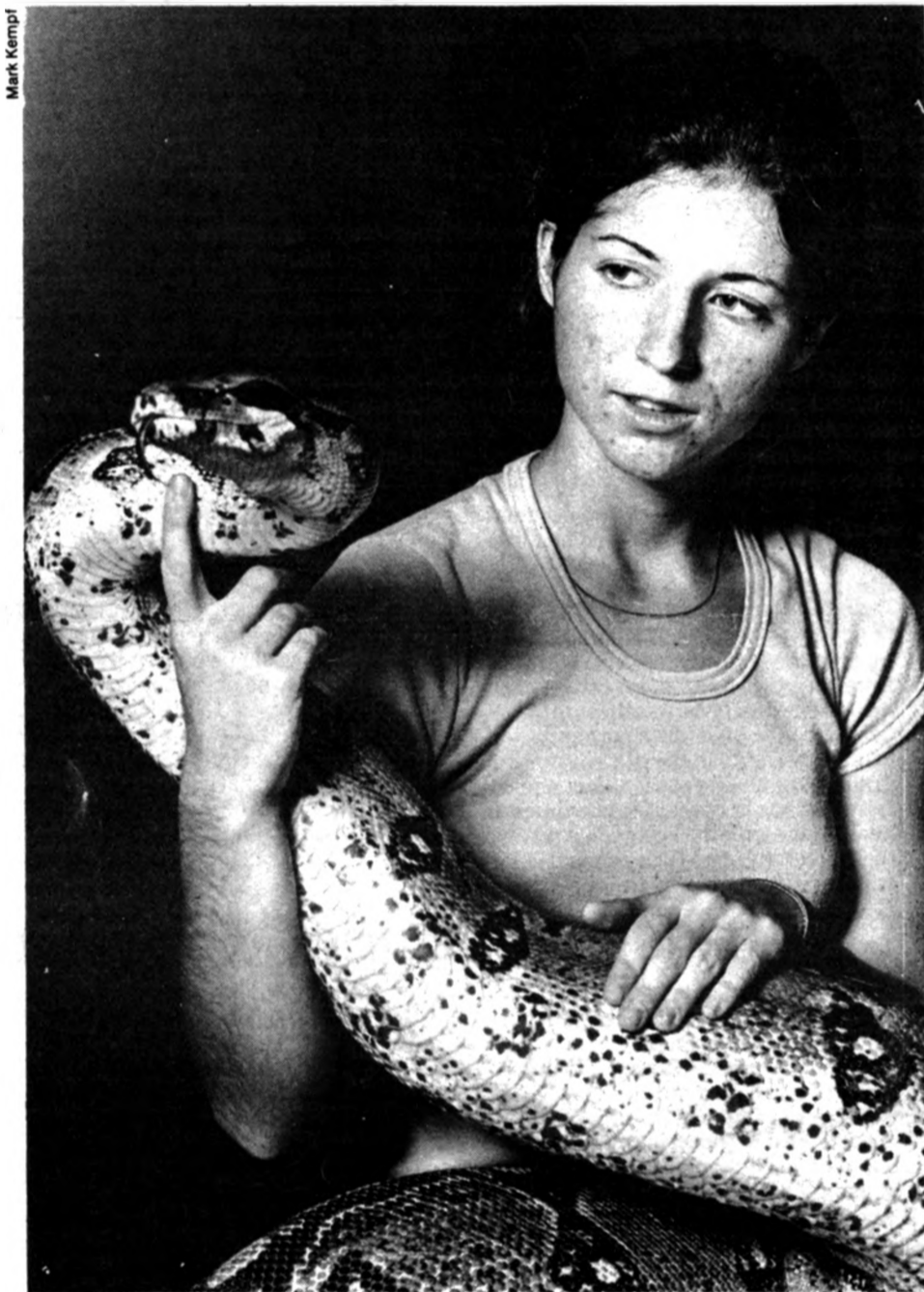
Persons nominated will be contacted to determine their willingness to run; a balanced slate of candidates will be prepared

from the list of nominees. Nominees and their biographies and photographs will be published in the Nov. 7 *Mizzou Weekly*.

The election will be held in mid-November, when individual ballots will be mailed to all permanent staff members working at least 75 percent time.

The Staff Council, a 16-member voice to the administration, was begun in 1978 to represent UMC's administrative, service and support staff. Staff Council meetings, open to all staff, are held once a month.

Haffey says the election committee members are happy to answer any questions staff may have about Staff Council or the election. Members are Pat Mansfield, purchasing, 882-3201; Jimmie Brechbuhler, 223 Eckles, 882-7552; Jerry Nichols, 110 General Services, 882-8361 and Haffey at 882-8348.



Graduate student/caretaker Debbie Rueweler holds a boa constrictor from UMC's Reptile Display, 217 Stewart Hall. The display, open to the public, contains live rattlesnakes, lizards and other reptiles; public feeding of the animals is mid-morning on Fridays.

### Staff Council nomination form

Name of nominee \_\_\_\_\_

University address \_\_\_\_\_

University phone \_\_\_\_\_

Job classification (check one; if unknown write job title in space below):

\_\_\_\_\_ Technical/paraprofessional

\_\_\_\_\_ Secretarial/clerical

\_\_\_\_\_ Crafts/service/maintenance

\_\_\_\_\_ Administrative/professional

Return by Oct. 17 to Ron Haffey, 108 Veterinary Clinic.



# Policy covers work on consulting jobs

New regulations on the use of University equipment and resources by teaching and research staff members who perform consulting or other non-University work take effect this month.

The policy allows use of equipment, services and staff under existing and new fee schedules when the consultation or work is related to the professional interest or improvement of a faculty member, does not create a conflict of interest with the University and is in the best interest of the University.

The new policy recognizes that certain facilities, such as the computer center and science instrument shop, already have established prices for non-University work and establishes fees which will make it possible to use other

facilities and services.

Under the policy, a written agreement between the curators and the firm for which work is being performed is required. If the amount of the fees for University services will be less than \$5,000, a University Facilities and Resource Use Agreement form may be used. If the amount will exceed \$5,000, a formal grant or contract agreement is required.

Copies of the new regulations and the facilities and resource use form have been distributed to deans, directors and department chairs. Further information regarding the policy may be received by contacting the Grants and Contract Administration section of the Graduate School's Office of Research at 882-7569.

## Enrollments now open for UMC staff benefits

The month of October will provide an open enrollment period for University employees who want to enroll in or change their coverage in three staff benefits programs.

The programs are life insurance, medical benefits and long-term disability.

Changes in staff benefits effective this fall will be explained to UMC employees at meetings held Oct. 1, 2 and 3; see This Week on page 4 for times and locations.

Additionally, a new benefits handbook, explaining the changes in detail, will be distributed to employees.

According to Mike Reese, UM director of employee benefits, it is important for all employees to sign up and return a life insurance plan enrollment card to their respective staff benefits offices in October, since the plan has changed.

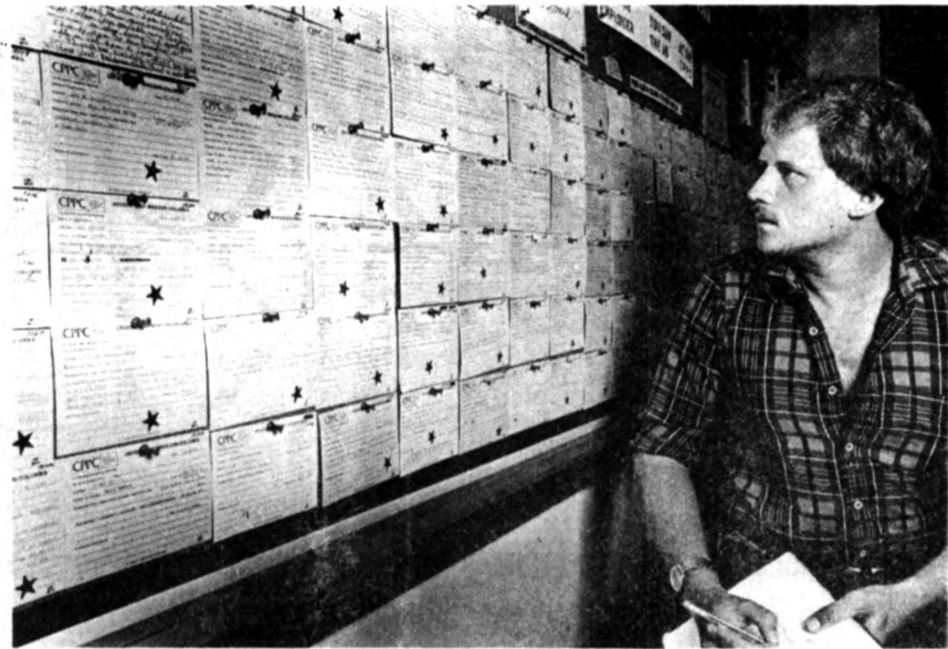
Improvements in the life insurance program allow employees to select one of three options in coverage: one-times annual salary with the cost paid entirely by the University; two-times annual salary with the cost shared by the employee and

the University; and three-times annual salary, with the cost of the third annual salary increment paid entirely by the employee.

If a card is not received, said Reese, the employee's coverage will automatically be converted to the counterpart coverage the employee had under the old program.

The open enrollment period for the medical benefits program will allow employees who are not now members to join and to allow those who are already members to make changes in their coverage, from \$200 to \$50 deductible, without having to furnish evidence of good health. The change would be effective Jan. 1.

Employees who are not now members of the long-term disability plan also will be able to join that program without furnishing evidence of good health. The new plan provides a sharing of the cost between the employee and the University; previously, the employee paid the entire cost.



Paul Carnes checks the job board of the Job Development Work Experience Program, a free service for University staff and faculty wishing to hire students. The program, which should not be confused with work study, posts job openings and can supply a list of applicants within a few hours. The program is a joint project of Student Financial Aids and the Career Planning and Placement Center. To post an opening or for information, call Norma Finlay at 882-7448.

## Graduate student report on fee, pay corrected

A recent article on benefits for half-time graduate assistants in *Mizzou Weekly* reported that at least five of the Big 8 and Big 10 schools allow assistants to pay their fees late in the semester, rather than at registration. Based on information from the Graduate Students Association and UMC Institutional Research and Planning, the article stated that UM does not have such a plan.

According to Don Hoehle, fiscal operations officer, UMC instituted a policy for deferment of incidental fees for graduate assistants — who have at least a .25 FTE appointment — last year. Under the plan, eligible graduate students may pay their fees in three payments each semester, but they must pay an additional \$15 charge for the service.

Hoehle also pointed out that the student proposal to have fees deducted from their paychecks as a means of lowering taxes is in error.

According to the fiscal operations officer, "these amounts would be taxable even if they were deducted from their payroll checks as long as the gross amount included the amount for the fees. For this amount to be exempt from taxes," he said, "it would have to be deducted from the individual's original contract amount to arrive at a reduced contract amount to be paid through the payroll process."

Such an action would be considered a waiver of fees and require approval by the board, Hoehle said.

# Campus announces department chairpersons for 1980-81

School of Accountancy: Rick Elam (Dir.)  
Advertising: Linda Shipley  
Aerospace Studies: Wayne F. Wootton  
Agricultural Economics:  
Charles L. Cramer  
Agricultural Engineering: C. LeRoy Day  
Agronomy: Richard Aldrich (Acting)  
Anatomy: William R. Goodge (Acting)  
Anesthesiology: G. William Eggers  
Animal Science:  
Billy N. Day (Interim)  
Anthropology: H. Clyde Wilson  
Art: Brooke B. Cameron  
Art History & Archaeology:  
David Soren  
Atmospheric Science: Wayne L. Decker  
Biochemistry: James L. Gaylor  
Division of Biological Sciences:  
Warren R. Flemming (Interim Dir.)  
Broadcasting: Roger Gafke  
School of Business:  
Robert J. Monroe (Dir.)  
Chemical Engineering:  
George Preckshot  
Chemistry: Pierre O. Crabbe  
Child & Family Development:  
Marilyn C. Coleman  
Child Health: Giulio J. Barbero  
Civil Engineering: John O'Connor  
Classical Studies: John C. Thibault  
Community Development:  
Alvin S. Lackey  
Computer Science: David R. Shurtleff  
Counseling & Personnel Services:  
Warren R. Seymour  
Curriculum & Instruction:  
W. Wayne Dumas  
Dairy Science: Frederic A. Martz  
Economics: Carmen F. Menezes  
Educational Administration:

Richard V. Hatley  
Educational Psychology:  
Richard A. English  
Electrical Engineering:  
John W. Rouse Jr.  
English: J. Robert Barth  
Entomology: Mahlon L. Fairchild  
Extension Education: John G. Gross  
Family & Community Medicine:  
Jack M. Colwill  
Finance: Robert J. Monroe (Acting)  
Food Science & Nutrition:  
H. Donald Naumann  
School of Forestry, Fisheries &  
Wildlife: Gene Cox (Acting Dir.)  
College of General Studies:  
Robert F.G. Spier (Acting Dir.)  
Geography:  
Walter A. Schroeder (Acting)  
Geology: John M. Sharp Jr.  
Germanic & Slavic Studies:  
Ernst Braun  
Health & Physical Education:  
Ralph E. Stewart  
School of Health Related Professions:  
Herbert S. Goldberg (Dir.)  
Higher & Adult Education:  
Robert J. Dollar  
History: Arvarh E. Strickland  
Honors College: Theodore A. Tarkow  
Horticulture: Donald A. Hegwood  
Housing & Interior Design:  
Kate Ellen Rogers  
Human Nutrition, Foods & Food Systems  
Management: Richard Dowdy  
Industrial Engineering: Jay Goldman  
Information Science: Bert R. Boyce  
Intercollegiate Athletics: David Hart  
Library Science: Francis J. Flood  
Management: Earl Lundgren

Marketing: Donald Shawver  
Mathematics: Keith W. Schrader  
Mechanical & Aerospace Engineering:  
Paul Braisted  
Medicine: Charles E. Mengel  
Microbiology: Richard Finkelstein  
Military Science: Richard C. Rice  
Music: Donald E. McGlothlin  
Naval Science: Simon Kittler  
Neurology: J. Donald Easton  
News Editorial: George Kennedy  
Obstetrics & Gynecology: David Hall  
Ophthalmology: Robert Burns  
Pathology: John F. Townsend  
Pharmacology: Murray Heimberg  
Philosophy: John Klutgen (Acting)  
Physical Medicine & Rehabilitation:  
Charles R. Peterson  
Physics: Thomas Wolfram  
Physiology: James O. Davis  
Plant Pathology: Victor H. Dropkin  
Political Science: David A. Leuthold  
Poultry Science: James E. Savage  
Practical Arts & Vocational-Technical  
Education: Richard Erickson  
Psychiatry: James M.A. Weiss  
Psychology: Sam C. Brown  
Public Administration: Robert Denhardt  
Institute of Public Safety:  
Larry L. Brockelsby (Dir.)  
Radiology: Charles C. Lobeck (Acting)  
Recreation & Park Administration:  
Glen A. Gillespie  
Romance Languages: Edward J. Mullen  
Rural Sociology: Michael F. Nolan  
School of Social Work:  
Richard E. Boettcher (Dir.)  
Sociology: C. Edwin Vaughan  
Special Education: Richard C. Shofer

Speech & Dramatic Art: Stephen Archer  
Statistics: Frederic Williams (Acting)  
Surgery: Donald Silver  
Veterinary Anatomy-Physiology:  
Roger E. Brown (Interim)  
Veterinary Medicine & Surgery:  
Kenneth H. Niemeyer (Interim)  
Veterinary Microbiology:  
C. Andrew Carson  
Veterinary Pathology: Arthur Bickford

# MIZZOU WEEKLY

Vol. 2, No. 4

A publication of the University of Missouri-Columbia faculty and staff, published every Friday during the academic year and every other Friday during the summer by the Office of Internal Communication, University Relations Division, 606 Maryland Ave. News deadline is noon on Tuesday of the same week.

Advisory Board: Keith Sanders, Delmar Hatesohl, Roy Utz, Clark Watts, Luverne Walton, Sandy Clark, Mary Miller, Freda McKee, Richard Lewis, Jimmie Brechbuhler, Ramona Howard.

Editor: Catherine Kernen  
Assistant Editor: Diana Reese Gard  
Editorial Staff: Robert G. Picard  
Brenda Procter  
Elizabeth White

Phone 882-6004

# Around the campus

**COMING NEXT WEEK: THE SEMESTER CALENDAR**—The Oct. 3 Mizzou Weekly will contain a comprehensive campus calendar listing all concerts, films, sports, lectures and other events scheduled at UMC through December.

The calendar should be a boon to persons planning events, so that they know what is scheduled during the year, and also provide advance notice to persons wishing to attend events.

There's still time to list your department or division's events in the semester calendar, if you haven't done so already. To have your events included, call the Office of Internal Communication at 882-6004 before noon Tuesday, Sept. 30.

Mizzou will continue to list a weekly calendar of events as well.

**THE MUSEUM OF ART AND ARCHAEOLOGY** will hold an open house from noon to 6 p.m. Sunday, Sept. 28. Visitors will get a behind-the-scenes look at the museum to discover how an exhibit is put together, what is done to restore objects and what a "curator" really is. Other activities will include a film, "The Restoration of Rembrandt's The Night Watch."

**A SERIES OF MINI-TOURS** of the Museum of Art and Archaeology will be offered at 12:30 p.m. every Wednesday.

The tours will last no longer than 30 minutes in order for faculty, staff and students to visit the museum on their lunch break or between classes.

The next tour, Oct. 1, will cover art of the ancient world; each week a different area of the museum will be explored.

**KOMU-TV SUED** — Rumors that KOMU-TV was going to be sued by a physician over an investigative story broadcast in 1978 became fact when the producer, director and University legal department were served subpoenas in the case recently.

The suit, filed in the Circuit Court for St. Louis County, alleges damages were caused to Dr. J. L. Milham, a Camdenton osteopath, by the program entitled "Healer or Dealer." The program, which was aired in KOMU's "Something More" broadcast, dealt with doctors and the manner in which they prescribe drugs.

**FRUSTRATED BY BUREAUCRACY?** — The Campus Ombudsman's Office wants to help faculty, staff and alumni as well as students. The office operated by MSA and Student Services, is available to persons needing information about the University, information about who to call when problems arise or individuals considering policy changes but wish student opinion beforehand. Beth Zimmer, head of the office's 10-member staff, invites individuals with questions or problems to phone 882-8386 or visit the office in 210 Read Hall.

**A TYPING SERVICE** is available to faculty, staff and students who need tests, theses, manuscripts, dissertations, resumes and other papers typed. Call 882-7701 for charges or stop by Stenographic Services at 309 S. Fifth St.

**A TENNIS TOURNAMENT** for faculty, staff and their spouses will be held Oct. 6 on the courts behind Brewer/Rothwell. Anyone interested may sign up by Oct. 1; for more information, call 882-2817.

**THE CHAMBER MUSIC SERIES** will open with a concert by the Beaux Arts Trio at 8:15 p.m., Oct. 3 in Jesse Auditorium.

The trio will perform Haydn's Trio in G major, the "Gypsy Rondo," Shostakovich's Trio, Opus 67, and Schubert's Trio in E-flat major, Opus 100.

Individual tickets to the concert are \$8 for the public and \$7 for students; half-price "Student Rush" tickets will be sold at the door, if available.

Tickets may be purchased from the Jesse Box Office from 10 a.m. to 4 p.m., Monday through Friday. For more information, call 882-3781 or 882-3875.

**FREE PERSONAL FINANCE SEMINARS** will be offered again this fall for faculty and staff, sponsored by Staff Council.

Seminars will meet on four Tuesday evenings in October from 7 to 9 p.m. Persons are welcome to attend all or part of the series.

The seminars were begun last year by Staff Council to help University employees manage their personal finances and to plan for the future.

The schedule:  
Oct. 7—"Economics and the Individual," Walter Johnson, associate professor of economics, Memorial Union Auditorium.

Oct. 14—"Personal Budgeting," David West, professor of finance, 209-210 Brady Commons.

Oct. 21—"Personal Insurance," Edward Metzgen, professor of family economics and management, Memorial Union Auditorium.

Oct. 28—"Personal Investments," Da-

vid West, professor of finance, Memorial Union Auditorium.

**CAREER EXPLORATION WORKSHOP FOR WOMEN**, a six-week workshop for women to discuss career concerns and goals, is now accepting registrations. To sign up for the free workshop, which meets each Wednesday night from 7 to 9 p.m., call Mary Heppner at 882-6803. The first session begins Oct. 8 at the Career Planning and Placement Center.

**CAREER PLANNING ASSISTANCE** is available free of charge every Tuesday and Thursday evening from 5 to 9 p.m. at the Career Planning and Placement Center, 110 Noyes. The service, provided by UMC career specialists, is open to all adults in the Columbia community.

**FITNESS FANTASIA** classes will be offered to faculty, staff and students by the University YMCA/YWCA beginning next week.

The classes, each meeting twice a week for 45 minutes, teach aerobic movement set to music. Cost for the eight-week course is \$10 for students and "Y" members and \$20 for non-members.

Two sessions are offered: one from noon to 12:45 p.m., Mondays and Wednesdays, beginning Sept. 29, and one from 4:45 to 5:30 p.m., Tuesdays and Thursdays, beginning Sept. 30.

To register for the classes, which will be held in the lab school gymnasium at the corner of Conley and Sixth streets, call Marty Pliske at 449-5768.

## Affirmative Action (From front page)

hire an individual who's not qualified," she adds, but means any underutilization of protected groups will be considered in the hiring process.

For faculty in each school or college, underutilization is determined by comparing the faculty profile with the percentage of qualified protected group members teaching in U.S. colleges in the base year plus all new doctoral graduates in the field from 1976-78. Thus, expectations vary.

For instance, Business and Public Administration with 53 full-time faculty and the School of Journalism with 51, although similar in size, are not expected to have the same number of protected group members on their faculties.

Business now has two female faculty — an appropriate number according to UMC's plan. However, with no minorities or blacks, Business is underutilized one each in these categories.

The School of Journalism, with six women, four minorities and two blacks on the faculty, is described in the plan as underutilized by eleven females, one black and one minority.

Using the Agriculture Dean's Office as an example for non-faculty positions, females have an availability of 18.29 percent in the managers/administrators category. This figure is converted to a decimal and multiplied by the total workforce in the job category. The product is the required utilization (.1829 x 5 = .91

Required Utilization of Females). In this case the required utilization is one female, indicating that figures are rounded to the nearest whole number. In the same job category, the computation for blacks indicates an underutilization (.0318 x 5 = .15) but since the figure is less than .5 the plan doesn't require hiring of a black in the category.

The plan indicates that in the future there will be a slow change in the composition of the faculty "because the rate of new appointments will be modest" and because there is no expected increase in faculty members.

For the 33 non-faculty categories, availability of protected groups was determined from local and state manpower data, the 1970 U.S. census and guidelines established by OFCCP.

In clerical and skilled craft categories, blacks are slightly underutilized and underrepresented in higher salary brackets. Although only three females appear in the total skilled craft workforce, females fail to apply for the majority of skilled craft positions, according to the plan.

One professional non-faculty category — registered nurses, dietitians and therapists — shows the most underutilization of blacks and minorities.

Other categories show little underutilization of females and a small amount of underutilization of blacks and minorities.

Indicating that UMC will continue to hire the best qualified candidates, Jones says the Affirmative Action Plan details steps to be taken to reach goals, including:

- ✓ Improved advertising of job openings to protected groups
- ✓ Increased emphasis on training programs to encourage promotion from within
- ✓ Increased training to help supervisors motivate and retain employees
- ✓ Increased networking (or communicating) with emphasis on locating protected group members with appropriate skills.

— Sharon Curry  
UMC News Services

## UMC staff profile showing apparent underutilization

	Total		Female		Total Minority		Black		Apparent Underutilization		
	10-31-79	Total	Total	Percent	Total	Percent	Total	Percent	Female	Black	Total Minority
<b>EXECUTIVE/ADMINISTRATIVE/MANAGERIAL</b>											
Managers/Administrators	199	49	24.6	7	3.5	6	3.01	0	0	0	
School Administrators-College	64	14	21.6	4	6.2	3	4.68	2	2	2	
<b>PROFESSIONAL-NON FACULTY</b>											
Fiscal, Managers, & Administrative Support Staff	102	72	70.5	3	2.8	1	.98	0	5	4	
Archivists/Librarians & Museum Curators	16	12	75.0	-	-	-	-	0	1	1	
Computer Specialists/Systems Analysts	51	11	21.5	1	1.9	-	-	0	3	2	
Engineers	12	1	8.3	-	0.3	-	-	0	0	0	
Registered Nurses, Dietitians, & Therapists	299	268	89.6	13	4.3	2	.66	0	29	22	
Personnel & Labor Relations Workers	19	13	68.4	2	10.5	2	10.5	0	0	0	
Physicians, Dentists & Related Practitioners	27	10	37	2	7.4	1	3.7	0	0	0	
Public Relations & Publicity Writers	30	20	5.2	2	5.2	2	5.2	0	0	1	
Life & Physical Scientists/Research Workers	115	20	17.3	5	4.3	2	1.7	1	4	3	
Writers, Artists & Entertainers	15	4	26.6	1	6.6	1	6.6	1	0	0	
Vocational & Educational Counselors	70	43	51.1	6	7.6	5	6.4	0	2	2	
Health Technologists & Technicians	59	49	83.0	3	8.0	1	1.6	0	7	6	
Social Workers	11	10	90.9	-	-	-	-	0	2	2	
<b>CLERICAL</b>											
Clerical Supervisors	32	23	71.8	2	6.25	1	3.12	0	0	0	
Clerical-Miscellaneous	631	573	90.8	89	2.38	38	6.02	0	20	16	
Clerical Secretaries, Stenographers & Typists	798	791	99.1	57	7.14	43	5.38	0	1	8	
<b>TECHNICAL AND PARAPROFESSIONAL</b>											
Animal Caretakers (Except Farm)	53	15	28.3	3	5.66	2	3.77	0	1	1	
Writers, Artists & Entertainers	25	8	32.0	-	-	-	-	0	1	2	
Operators-Computer & Peripheral Equipment	44	10	22.7	7	15.9	6	13.6	6	0	0	
<b>TECHNICAL &amp; PARAPROFESSIONAL</b>											
Engineering & Science Technicians	70	7	10.0	2	2.8	2	2.8	8	1	2	
Health Technologists & Technicians	388	286	73.7	59	15.1	55	15.0	0	0	0	
Research Workers (Unspecified)	137	82	59.8	2	1.4	2	1.4	0	4	14	
Technicians (Unspecified)	57	36	63.1	6	10.5	5	8.7	0	0	0	
<b>SKILLED CRAFT</b>											
Construction	142	1	.70	4	2.8	2	1.4	10	2	2	
Mechanical & Repair	117	2	1.70	4	3.4	3	2.5	4	5	9	
Other	53	-	-	4	7.5	3	5.6	10	0	0	
<b>SERVICE</b>											
Labor (Non-Farm)	104	7	6.7	25	24.0	22	21.1	11	0	0	
Personal, Health & Other	131	70	53.4	30	22.9	29	22.1	27	0	0	
Protective Service	79	10	12.6	0	10.1	6	7.5	3	1	0	
Cleaning & Food Service	773	381	49.2	320	41.2	199	25.6	57	0	0	
Farm Workers	50	1	1.7	4	6.8	4	6.8	10	2	2	

## UMC faculty profile showing apparent underutilization

School/College	Total		Total Minority		Black		Apparent Underutilization		
	10-31-79	Male	Female	Total	Male	Female	Female	Black	Total Minority
Agriculture	209	202	7	1	-	1	1	-	1
Arts & Science	439	379	60	24	23	1	5	4	1
Business & Public Administration	53	51	2	-	-	-	-	-	-
Education	130	93	37	4	2	2	3	1	2
Engineering	102	101	1	9	9	-	-	-	-
Graduate School	10	8	2	1	-	1	1	-	1
Home Economics	30	13	17	-	-	-	-	-	-
Journalism	51	45	6	4	4	-	2	0	1
Law	21	18	3	-	-	-	-	-	-
Library & Informational Science	11	6	5	2	-	2	1	-	1
Medicine	370	200	40	25	21	1	3	3	22
Nursing	48	3	45	-	-	-	-	-	2
Public & Community Service	32	21	11	2	1	1	1	-	2
Veterinary Medicine	81	80	1	6	5	1	3	2	1
<b>OTHER</b>									
Intercollegiate Athletics	27	23	4	1	1	-	1	1	-
Library	50	20	30	3	1	2	-	-	3
Hospital	166	137	29	8	6	2	1	-	1
<b>OTHER</b>									
Provost	9	3	6	-	-	-	-	-	1

# This Week

To list your department or division's events in **This Week**, write or call the office of internal communication, 606 Maryland, 882-6004, by noon Tuesday of the week before the event is scheduled.

All events are free unless otherwise noted.

## 26 Friday

**MSA Movie:** "La Cage Aux Folles," 7 and 9:30 p.m., Middlebush Aud. Tickets are 75 cents in advance, \$1 at the door.

**Jesse Series:** Emanuel Ax, pianist, 8:15 p.m., Jesse Aud. For ticket information, call 882-3875 or 882-3781.

**Laws Observatory:** Weather permitting, free telescope observing on top of the Physics Building, 8 to 10 p.m.

**Women's Tennis:** Southwest Missouri State vs. Mizzou.

**University Theatre:** "Toys in the Attic," 7:30 p.m., Fine Arts Building. Tickets are \$3.50 (\$1.75 for students).

**AWS Rape Awareness Week lecture:** "The Politics of Rape," Kate Millet, 7 p.m., Ellis Aud.

**Forestry Seminar:** "High Adventure Underground: A Caving Program at Rock Bridge State Park," Scott Schulte, 2:40 p.m., 2-7 Agriculture.

**International Bazaar:** 8 a.m. to 5 p.m. in front of Read Hall. International food, games, plays and demonstrations by UMC students.

**Korean Films:** "The Pagoda Arts of Korea" and "The Traditional Korean Architecture," 3 p.m., Middlebush Aud. Taekwondo demonstration follows. Sponsored by the Korean Students Association.

## 27 Saturday

**Women's Center Weekend Workshop:** "Financial Planning," Mary Epstein, marketing representative for Trans-America Corp., 9 a.m. to 3 p.m. To register, call 882-6621.

**Women's Center Weekend Workshop:** "Enhancing Personal Power," Suzanne Dunlap, research associate, Counseling and Personnel Services, and Sandy Olson, intern, Counseling Services, and Lu-Ann Knowlan, Frontier Associates, 8:30 a.m. to 4:30 p.m. To register, call 882-6621.

**MSA Movie:** "Escape from Alcatraz," 7 and 9:30 p.m., Jesse Aud. Tickets are 75 cents in advance, \$1 at the door.

**MSA Midnight Movie:** "The Kids Are All Right," midnight, Jesse Aud. Tickets are 75 cents in advance, \$1 at the door.

**Men's football:** At San Diego State.

**AWS Week, "Women in the Arts":** Kate Millet, discussion and demonstration of her art, film, "Three Lives," and slide show of her sculpting, 2:30 p.m., Middlebush Aud.

**AWS Week, "Women in the Arts":** "Feminist and Gay Politics," Kate Millet, co-sponsored by Gay People's Alliance.

**University Theatre:** "Toys in the Attic," 7:30 p.m., Fine Arts Building. Tickets are \$3.50 (\$1.75 for students).

**Women's Tennis:** Kansas City vs. Mizzou.

**International Night Dinner at Memorial Union:** French, at 7 p.m., served in the

Hawthorn Room. Reservations required; call 882-7405. Price: \$12.95.

## 28 Sunday

**Museum of Art and Archaeology:** Open house. Included in the activities is a film, "The Restoration of Rembrandt's The Night Watch," noon to 6 p.m.

**International Night Dinner at Memorial Union:** French, at 6 p.m., served in the Hawthorn Room. Reservations required; call 882-6405. Price: \$12.95.

**University Film Series:** "The Bailiff," 8 p.m., Ellis Aud.

**MSA Movie:** "Fiddler on the Roof," 8 p.m., Jesse Aud.

## 29 Monday

**Women's Center:** Friends of the Center potluck, noon, 1 Gentry Hall.

**AIA Lecture:** "Excavations at Pasargadae: The Art and Architecture of Achaemenian Iran," David Stronach, professor, University of Arizona, 8 p.m., 106 Pickard Hall.

**Geology Seminar:** "The Devonian Cat-skill Delta Complex," Victor Rakmanian, Department of Geology, University of Vermont, 3:30 p.m. in 109 Geology.

**Department of Microbiology Seminar:** "Structure and Regulation of the Thymidine Kinase Gene of Herpes Simplex Virus," Michael Wagner, Yale University, 1:40 p.m., M640 Medical Sciences Building.

## 30 Tuesday

**Introductory Neuroscience Seminar:** "Adrenergic Binding Studies for Fun and Profit," D. Bylund, Department of Pharmacology, 7:30 p.m., 112 Lefevre Hall.

**AWS Meeting:** Faculty and staff invited, 6 p.m., Women's Center, 1 Gentry Hall.

**AWS Week, "Women in the Arts":** Nancy Fierro, concert pianist, 8 p.m., Fine Arts Aud.

**Volunteer Workshop:** "Assertiveness Training for Volunteers," Kathy Lang, Center for Student Volunteer Action, and Dorothy Sikyta, Women's Center, 7 p.m., C-208, Brady Commons.

**Black Culture Center:** "Stress Management for Students Feeling Anxiety Because of Tests, Home Pressures, Peer Pressures, Etc.," Barbara Horrell, training development coordinator, UMC Health Sciences Center, 7 p.m.

**Women's Center Discussion Group:** "Exploring Female Sexuality," Jean Hibbel, doctoral candidate in counseling psychology and coordinator of Human Sexuality Program, and Colleen Hester Voss, doctoral candidate in counseling psychology and intern, UMC Counseling Services, 8 to 10 p.m. To register for the eight-week workshop, call 882-6621.

**Topics in Latin American Agriculture:** "The Agricultural Situation in Chile," presented in Spanish by Rafael Tamayo, 2:40 p.m., 113 Arts and Science.

**Report on the Status of Women Report for Faculty Women:** 5 to 7 p.m., Alumni Center.



Pianist Emanuel Ax will perform the first concert of the Jesse Auditorium Series tonight at 8:15 p.m. Tickets to the Ax concert are still available at the door at \$8 public and \$7 students.

**Art and Archaeology Lecture:** "Early Bronze-Age Culture and the Unification of China," Christopher J. Lucas, UMC professor, 7 p.m., 106 Pickard Hall.

**American Chemical Society Meeting:** Robert J. Huggett will speak on Kepone insecticide contamination of Virginia's James River Estuary, 7:30 p.m., 322 Chemistry Building.

**Free Career Planning Assistance:** 5 to 9 p.m., Career Planning and Placement Center, 110 Noyes.

## 1 Wednesday

**MSA Movie:** "Now, Voyager," 8 p.m., Middlebush Aud.

**Women's Center Film:** "Georgia O'Keefe," 7 p.m., 1 Gentry Hall.

**Volleyball:** Central Missouri vs. Mizzou, 7:30 p.m.

**AWS Week, "Women in the Arts":** "Potpourri of Local Women Artists," AWS Variety Show, 7 p.m., Ellis Aud.

**Staff Benefits Meeting:** Representatives will explain changes in staff benefits program. Sessions at 8:30 a.m., 10:30 a.m. and 1:30 p.m., Memorial Union Aud.

**Museum of Art and Archaeology:** "Mini-tour," lasting no longer than 30 minutes, covering art of the ancient world, 12:30 p.m.

**Tennis Tournament Sign-ups:** Last day for faculty, staff and spouses to sign up for the Oct. 6 tournament. Stop by 614 Kuhlman Court or call 882-2817.

## 2 Thursday

**Women's Center Seminar:** "Fun Feminist Literature," noon, 1 Gentry Hall.

**University Film Series:** "Pandora's Box," 8 p.m., Ellis Aud.

**University Philharmonic:** Conducted by Hugo Vianello, 8:15 p.m., Jesse Aud.

**AWS Week, "Women in the Arts":** "Right Out of History: The Making of Judy Chicago's 'The Dinner Party,'" AWS film, 7:30 p.m., Memorial Union Aud.

**Staff Benefits Meeting:** Representa-

tives will explain changes in staff benefits program. Sessions at 8:30 a.m., 10:30 a.m., 2:30 p.m. and 4 p.m., Memorial Union Aud.

**Faculty Council Meeting:** 3:40 p.m., S-110 Memorial Union.

**Free Career Planning Assistance:** 5 to 9 p.m., Career Planning and Placement Center, 110 Noyes.

**Fortnightly Club:** Busy Women's Luncheon, Flaming Pit, Cheyenne Room, noon to 1 p.m., with President Olson as speaker. \$5, payable at the door.

**Luncheon:** In honor of G. Ellsworth Huggins Undergraduate Scholars attending UMC; sponsored by the Honors College; 11:45 a.m., N-208 Memorial Union.

## 3 Friday

**Laws Observatory:** Weather permitting, free telescope viewing on top of the Physics Building, 8 to 10 p.m.

**Men's Cross Country:** Missouri Intercollegiate Invitational, 5 p.m.

**Women's Cross Country:** Missouri Invitational, 5 p.m.

**Chamber Music Series:** Beaux Arts Trio, 8:15 p.m., Jesse Aud. For ticket information, call 882-3875 or 882-3781.

**Staff Benefits Meeting:** Representatives will explain changes in the staff benefits program. Sessions at 8 a.m., 2 p.m. and 4 p.m., Medical Center Aud.

**MSA Movie:** "Yanks," 7 and 9:30 p.m., Middlebush Aud. Tickets 75 cents in advance, \$1 at the door.

**Analytical-Environmental Seminar:** Sharon Kent, 1:40 p.m., 32 Chemistry.

## 4 Saturday

**MSA Movie:** "Star Trek," 7 and 9:30 p.m., Jesse Aud. Tickets 75 cents in advance, \$1 at the door.

**Men's football:** Penn State. Kickoff time 1:30 p.m.

## 5 Sunday

**University Film Series:** "Keetje Tippel," 8 p.m., Ellis Aud.

**MSA Movie:** "Twelve Angry Men," 8 p.m., Jesse Aud.

**International Night Dinner at Memorial Union:** Chinese, a la carte in the cafeteria from 5 to 6:30 p.m. Prices vary.

**Tiger Fun Run:** 5,000-meter run around campus for faculty, staff and students at 9 a.m. Register at 614 Kuhlman Court; for more information, call 882-2817.

## Exhibits

**MSA Art Lending Library:** Original two-dimensional artwork (prints, watercolors, paintings) are displayed in the MSA Gallery on the second floor of Brady Commons through September. Artwork is available to the University community for rent on a semester basis for a small fee.

**Ellis Library:** Display from the Department of Community Development through October in the main lobby. If you would like your department represented, contact Gina Mares at 882-6324.

University Libraries  
University of Missouri

### Digitization Information Page

Local identifier                      MizzouWeekly(print)

### Source information

Format                                      Newspaper  
Content type                                Text with images  
Source ID                                  Duplicate copies University Archives weeded out  
Notes

### Capture information

Date captured                              July-December, 2022  
Scanner manufacturer                      Plustek OpticBook  
Scanner model                                A300 Plus  
Scanning system software                Book Pavilion  
Optical resolution                          600 dpi  
Color settings                                8 bit grayscale for majority of pages;  
    24 bit color for color illustrations/portraits/photographs  
File types                                      tiff  
Notes

### Derivatives - Access copy

Compression                                Tiff: LZW compression  
Editing software                             Adobe Photoshop 2022  
Resolution                                    600 dpi  
Color    same as captured  
File types                                      pdf created from tiffs  
Notes    Images cropped, straightened, and brightened.