

SPEC-M  
LD  
3476  
.P4  
1984/85

1984

# PERSPECTIVES IN BLACK

Getting to Know UMC '84-85





# TABLE OF CONTENT

- 2 Greetings
- 4 Legion of Black Collegians
- 6 Minority Student Programs
- 7 Academic Assistance
- 8 Affirmative Action
- 9 Minority Recruitment
- 10 Academic Perspective
- 13 Black Studies
- 16 Graduate Studies
- 18 Faculty
- 20 Administrative Staff
- 22 Financial Aid
- 24 Pictorial Perspective
- 30 Housing
- 34 Between the Books
- 38 Black Greeks
- 42 Sports
- 44 City of Columbia
- 45 Area Churches
- 48 Notes



# GREETINGS

**W**ELCOME to the University of Missouri Columbia. You have just begun one of the most important and memorable facets of your life. Use it wisely. Your experience at MU will be far richer and rewarding if you remember that you are here, not only to advance your education, but also to expand on how much effort you devote to your college career—from registration to graduation.

You are one of approximately 800 Blacks in a student population of about 24,000. This new situation may take some adjustment. Being a minority on a predominately white campus may cause you to feel some of the pressures of the system — but don't let it scare you. Your education is vital to your future and the future of the Black community. If you allow yourself to be intimidated by the system you are not only cheating yourself but also those who made it possible for you to be here.

Adjusting to certain facets of this new atmosphere may be difficult at times but there are many people here ready and willing to help you. You will find that black faculty/staff and black upperclassmen can inform you of many things you may need to know.

**Perspectives in Black: Getting to Know UMC** is designed to be yet another source of information. Its purpose is to help you to ease into the university setting and give you some background information on various activities and organization that may interest you.



# LEGION OF BLACK COLLEGIANS

**T**HE purpose of the Legion of Black Collegians is to assist black students at the University of Missouri and the blacks in the surrounding community. Assist means to render whatever services necessary that are within the capabilities of the Legion of Black Collegians to render. LBC's first responsibility is to the black UMC student; to promote academic excellence, to enhance socio-cultural awareness, to maintain a balance between incoming and graduating students and to provide a liaison between the campus and the black community.

The Legion of Black Collegians' functions are: 1) to serve the major recognized body of Black students on the Columbia campus; 2) to be the students' political arm on campus; 3) to develop and present programs that are relevant to Blacks; 4) to promote political and social awareness of Blacks in this school and state, as well as country; and 5) to maintain meaningful communication with other black organizations that might add to the welfare of the organization. A communication link must also be made with various University officials.

The Student Assembly meets monthly during the school year; time and places are determined by the Executive Board. Meetings of

the Student Assembly may be called at any time by the Executive Board, and /or shall be called by the written request of a majority of the members of the Student Assembly. Majority vote of the members present at any given meeting rules. The Executive Board of the LBC shall preside at all Assembly meetings.

Executive Board offices and functions are as followed:

**Executive Director** — duties include assisting in generating ideas and programs that help to integrate students into the University system as well as to oversee and coordinate the activities of the executive board.

**Economics Chairone** — duties include the management and budgeting of allocated funds.

**Communications Chairone** — duties include the production of *The Black Book* and *"The Observer,"* (LBC's newspaper), publicizing all LBC events, and producing various other LBC publications.

**Political Educator** — duties include assisting Black students to combine their

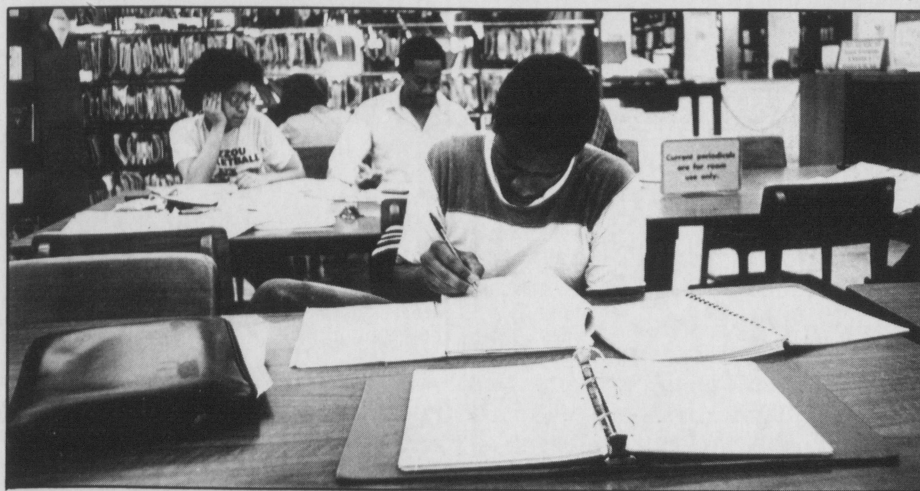
various organizations in efforts that they work as one political voice and voting power.

**Activities Chairone** — duties include the coordinating of all social

*LBC's first responsibility is to the Black MU students, to promote academic excellence and to maintain a balance between incoming & graduating students.*

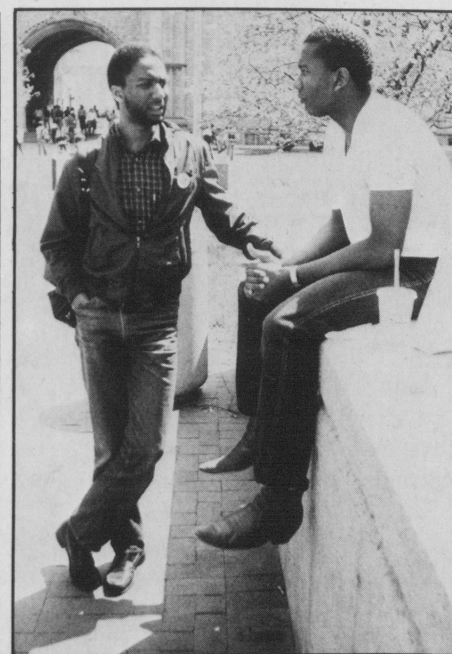
events of LBC and to promote a "meaningful and social" existence for Blacks on campus.

**Campus and Community Relation Chairone** — duties include obtaining information from residents in the community and relaying this information to the rest of the



campus; also to assist the Communications Chairone by helping to publicize events on campus that the community should be involved in.

The Legion of Black Collegians plan a number of annual activities for each academic year. These activities begin in the fall with Black Experience Week, and The



**LBC Homecoming Queen Contest.**

In February, Black Awareness is celebrated. Activities are generally focused on Black American history, past and current affairs.

Also in the spring, the Legion of Black Collegians conducts outreach programs directed towards prospective Black college students who have an interest in continuing their education beyond high school. The high school students are brought to campus for a day to explore university life, educational programs, and other information relevant to their preparation for the University of Missouri.



# MINORITY STUDENT PROGRAMS

**M**INORITY Student Programs works cooperatively with the campus to help minority students adjust socially, academically and psychologically to University life. Help is offered through academic assistance, cultural and cross-cultural programs and special services for the disabled.

For both minority and disabled students, MSP acts as a liaison between the inherent limitations and realities of the University system and the needs and wants of those students desiring to overcome such limitations.

The staff assists minority students by providing academic and personal counseling, and self-help workshops covering areas as: test anxiety, avoiding academic probation, how to study, how to take tests, time management and effective utilization of campus resources.

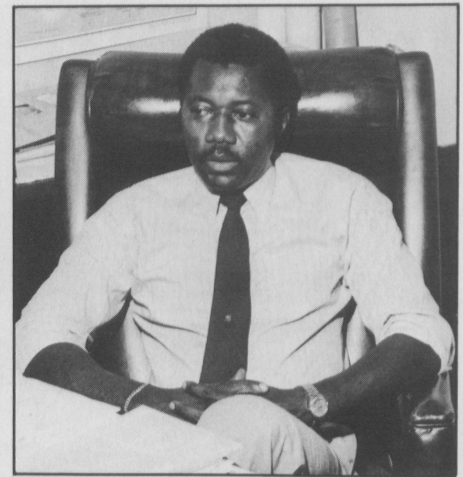
Minority Student Programs sponsor programs throughout the year designed to bring about mutual acceptance and positive interaction between minority students and other members of the University community.

A facet of Minority Student Programs is the Black Culture Center (BCC), located at 823 Virginia Avenue. The BCC provides an environment for students, faculty, staff and Columbia citizens to come

together to exchange ideas, whether they be political, philosophical or social in nature. The BCC maintains a permanent African Artifact Display, a library with over 200 volumes on Black Culture ranging from History of Blacks in America, minorities in politics, to black athletes. Throughout the year, the BCC offers programs designed to expose students to current events, politically, culturally and artistically. Regular programming includes speakers, art exhibits, film series and workshops. For more information, call the Black Culture Center at 882-2664 or 882-6671.

Prime Time, is a monthly publication of both campus and community events. Monthly features include student and staff members of the month, a historical events calendar, and "Lenstalk." Prime Time also serves as a tool for volunteer students to gain experience in reporting and photography skills.

The Access Office, located in 126 Gentry Hall, coordinates special services available to disabled students. These include classroom accommodations and testing arrangements, reader and attendant referral, on-campus transportation and equipment loan and repair. The office works various sources on campus to increase accessibility and enable



**Dr. Roland Buck, Asst. Vice-Chancellor Student Services**



**Paulette Grimes, Asst. Director Minority Student Programs**

disabled students to participate in all aspects of student life.

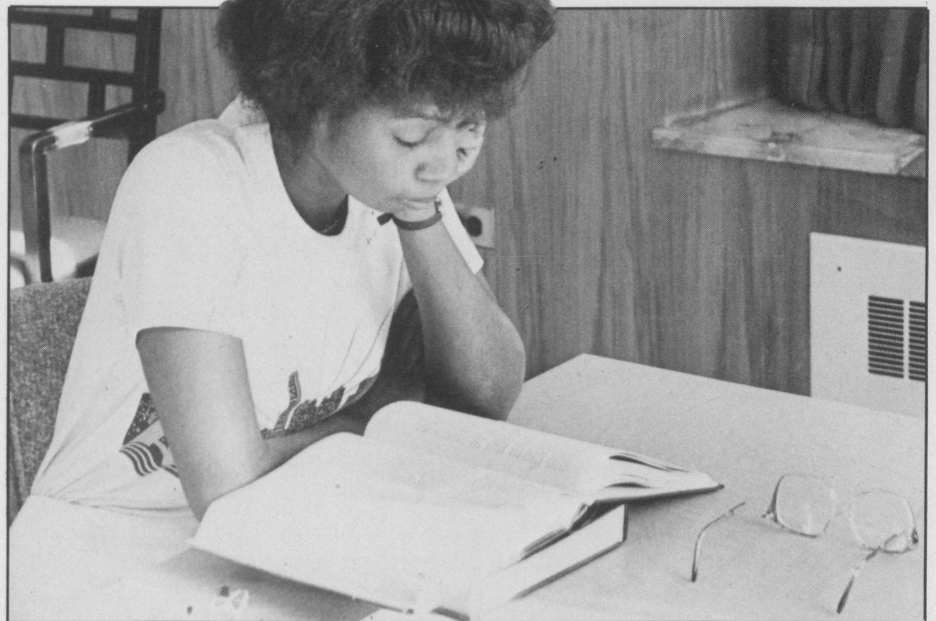


# ACADEMIC ASSISTANCE PROGRAM

**T**HE Academic Assistance Program was initiated to enhance the existing academic services for the undergraduate students. The primary objective of this new University effort is to help recognize, coordinate and promote the academic services on this campus. The need for this program emanated from the concern by University officials toward the issues of new students adjustment and transition; creating a concerted effort of University faculty and administration to maintain a more supportive and positive educational environment; and providing more focused attention on the academic success and retention of students

**Targeted Student Population:** The program will concentrate on those undergraduate students who are defined as disadvantaged. They are disadvantaged by being low income, first generation college students and or academically deficient (scoring less than 16 on the Missouri Math Placement Test or 55 on the Missouri College English Test). According to this definition, there is an outstanding number of these students enrolled at the University as of fall semester.

**Associated Staff Memebers:** The role of these staff persons will be to provide infomation and support in designing strategies and programs to



assist the disadvantaged student. These three staff persons are already permanently assigned to student centered programs. The program units represented are: The Learning Center, Career Planning and Placement Center of the Counseling Services Department, and Minority Student Programs. These three areas possess the resources and the expertise to help better serve the disadvantaged student on this campus.

**Advisory Board:** This twelve member board will be comprised of University faculty members, administrators, students and one local public school representative. The responsibilites of the board are: (1) to provide programmatic

recommendations and some technical assistance, and (2) to provide liaison assistance to the various academic units of the campus.

**Areas of Concern for the Program:**

1. promotion of academic support services, tutoring, learning skills and counseling services;
2. new student orientation and transition programs;
3. academic advisement;
4. a student data tracking and monitoring system;
5. career and occupational planning outreach activities.



# AFFIRMATIVE ACTION

**B**OOKER T. Washington, a black educator and the founder of Tuskege Institute, which, ironically, opened its doors on July 4, 1881, stated that:

“Success should be measured not so much by the position one has reached in life as by the obstacles he or she has had to overcome in trying to succeed.”

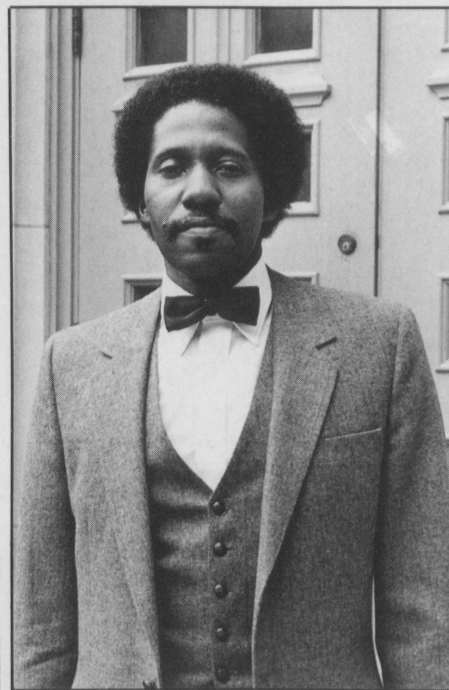
Being Black in America has never been easy—confronting and overcoming obstacles has been a way of life. Although some Blacks have been able to overcome poverty through years of struggle, great economic disparities between Blacks and Whites remain.

The fact that you are enrolled at UMC indicates your progress, but, at the same time, you know you have not reached your final goals. UMC is committed to the principles and practices of equal opportunity and affirmative action. Equal opportunities, combined with your personal ambition, should enable you to achieve your educational aspirations to the same extent as of other students. The campus is committed to increased access, program distribution and successful matriculation of all students, but particularly minority students through longstanding and equitable

policies and programs.

What is equity? What are the consequences of equity principles and practices at UMC? Equity at UMC denotes fair and just treatment of all members of society who wish to participate in and enjoy the benefits of post-secondary education. Fair and just treatment includes access to and participation in all of the campus' academic programs and activities. It implies both the humanistic values of an equal opportunity to achieve the rewards of higher education and the judicial concept of equal protection under the law. Further, as warranted, the attainment of equity in reality may require the development and implementation of action-oriented programs encompassing goals and timetables as appropriate remedies to address past inequities. As fashioned by our cultural and ethical foundations, the humanistic concept of fair and just treatment requires each individual to scrutinize his or her actions, to ensure that they are impartial and guided by an objective consideration of the potential of other individuals.

Programmatically, the University has undertaken a number of measures to provide for equitable access and continuance for black students. In the area of recruitment, admissions officers visit a number of high schools and



**Dr. Alton Zanders, Director  
Equal Opportunity**

community colleges to directly confer with prospective students and parents regarding the University and its many programs of study. Additionally, the Office of Admissions has established a highly successful Minority Visitation Program (MVP) which facilitates direct campus visits by students and parents. The St. Louis and Kansas City Inroads Programs, as well as a number of summer programs directly sponsored by academic departments, are other examples of demonstrated commitment to the expansion of the career opportunities of black students. Perhaps you were personally persuaded to attend UMC through one of those programs or by a neighborhood friend who is extremely pleased by his or her choice to attend.

All of these efforts underway by the University and those planned for the future are intended to remove any and all “obstacles” which may hinder you from achieving your career goals — because we want you to succeed.



# MINORITY RECRUITMENT

**T**HE University commits itself to the recruitment of minority students who wish to further their education at a higher institute of learning. The University initiates several programs and activities to encourage minority interest and enrollment at the University. Prime among their programs is the Minority Visitation Program, which allows some 1,000 high school juniors and seniors each year to visit the University. This program primarily invites students from Kansas City and St. Louis public school systems to spend a day on campus and orientate themselves, with the help of tour guides, to the many facets of college life.

In addition to other administrative recruitment efforts, such as a Higher Education Motivation Program, targeted at eighth and ninth grade students, different schools and colleges at the University sponsor various scholarship programs in such fields as business and engineering. Through these programs, minority students in good standing in high school or at the University gain the financial assistance to pursue areas of interest. Other schools on the University campus, such as the School of Journalism, sponsor workshops and invite high school



**Dr. Keener A. Tippin, Asst. Director Admissions**

**T**HE University initiates programs to encourage minority enrollment.

students to participate in learning more about the demands of their

career interest.

Administrators and staff of the University also make individual efforts to visit area and intrastate high schools to encourage students' desires to attend college. Minority students are made aware of the vast amount of opportunities that await them here at the University, from social and academic programs to financial aid assistance.



# ACADEMIC PERSPECTIVE

**O**FTEN times minority students suffer from the lack of information. If you do not get a solid understanding in the beginning it may hinder your college education later. All of the answers to your questions may not be here, but if you do not know be sure you ask someone. There are people here to help you in your academic pursuit; particularly the office of Minority Student Programs, the Legion of Black Collegians and the faculty and staff members.

**Q: What is pre-registration and why should I do it?**

Pre-registration applies to currently enrolled students. It is a procedure during the semester that allows the student to select his classes for the following semester. The process is simple and is generally helpful in avoiding mishaps such as closed classes and scheduling conflicts. Newly enrolled freshmen and transfer students will be able to pre-register during summer orientation. If a student does not pre-register he will be required to go through the registration procedure at the beginning of the semester of which he wishes to enroll.

**Q: How does the registration process work?**

Registration is generally held two days before school starts in the Hearnes Multipurpose building. You will be assigned a time to report there based on your student number. To register you need to 1) pick up a packet of registration materials and a SCHEDULE OF COURSES at the Dean's office of your school or college, 2) consult your advisor

***A**LL of the answers to your questions may not be here, but if you do not know the answer be sure to ask someone. There are people here to help you in your academic pursuit.*

and obtain his signature on your registration materials, 3) When you enter Hearnes you will find that each school or department will have a table with

course cards for each class offered, 4) You must obtain a course card for each class you take, 5) Fill out materials and obtain the Dean's approval from your school or college, 6) have registration materials checked, 7) pay the cashier, 8) finally, have your ID card made and/or validated.

**Q: What do I do if I miss registration?**

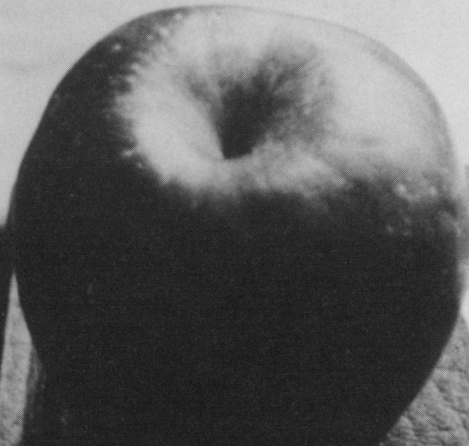
If you miss registration you may register late (within the first two weeks of school). There is, however, a \$25 late registration fee. You must pick up course cards at the campus office of each department in which you intend to take a course.

**Q: How do I find my advisor?**

When you enter a school or college, you are automatically assigned an advisor in that particular school or college. You should be officially notified of his/her name and office. If this is not the case, the dean of that particular school of college should be able to assist you.

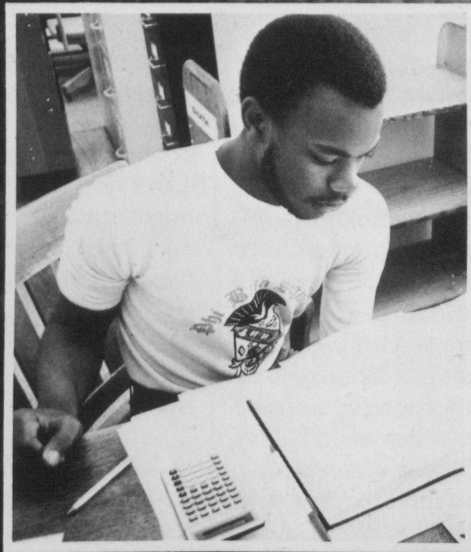
**Q: What is PASS/FAIL?**

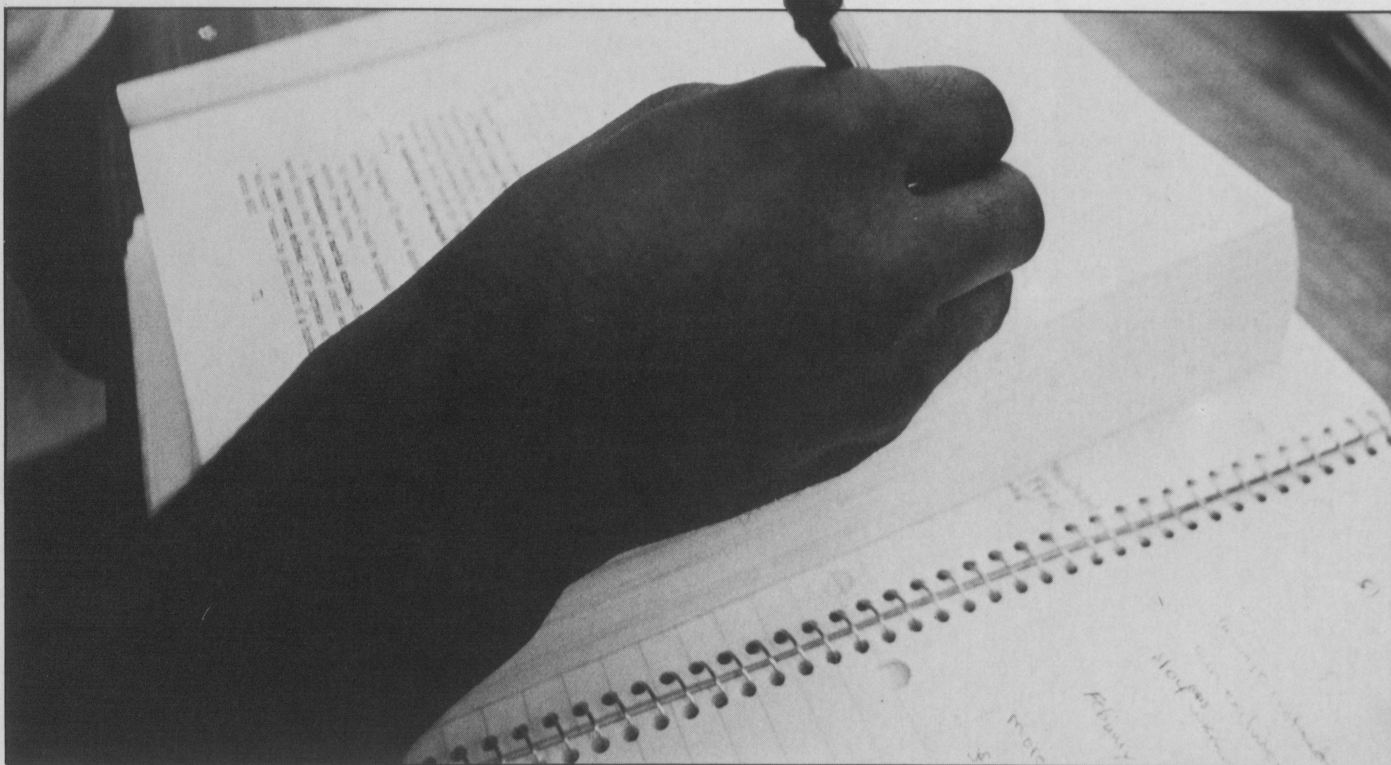
When you register or pre-register for a course, you have the option of taking one class on the pass/fail



Webster's  
New  
Collegiate  
Dictionary

*A Merriam-Webster®*





## ACADEMIC PERSPECTIVE (continued)

grading system. This means if you do C work or better an S grade will be entered into your transcript in place of a regular grade. This will not effect your grade point average (GPA). However, if your work is D or below, a U will be entered onto your transcript and an F will be figured into your GPA. This is a viable alternative if you are expecting a C out of a required class and do not wish it to affect your GPA.

### **Q: What is a section change and why should I need to do this?**

A section change is a change in the time and/or day of the meeting of the same class. If problems in scheduling arise, this is an alternative. This is also a solution if a communication problem is realized between you and your instructor early in the semester. Section changes must be

done during the first few weeks of class.

### **Q. What is petitioning and ADD/DROP?**

No student is locked into a course after registration is over. Petitioning is the system of dropping and adding courses after the semester has begun. Petitioning begins the third day after classes resume for each semester. Adding is done only during the petitioning period, but in most cases dropping a course is permitted anytime until the end of the semester (check with your school or college). If you drop during the first six weeks, neither the grade nor the class will appear on your transcript. After that time if you drop a course you will receive a grade of W (withdrew in good standing) or WF (withdrew failing). The WF is computed into your GPA as an F. W is not figured into your GPA. It is advisable that you talk to your instructor and advisor before you pursue any course of action.

### **Q: What happens if I don't complete the assigned course work for the semester?**

A grade of incomplete may be recorded when a student's work is incomplete and the instructor feels unable to assign a grade. This option is completely up to the instructor's discretion, and incompletes are many times not given except in cases of documented hardship. A student must make up a delayed grade within two semesters or receive a permanent grade of incomplete (I).

### **Q: What kind of GPA must I maintain?**

You must maintain a 2.0 semester and cumulative GPA in order to remain in good standing. You will be placed on scholastic probation if your semester GPA is below 2.0. If you are on scholastic probation you must bring your cumulative GPA to a 2.0 within two successive semesters. If you fail to do so, you are ineligible to re-enroll



# BLACK STUDIES

**B**LACK Studies courses are designed to train students to research the Black Experience and to provide those preparing for careers in the service-oriented professions the study of those aspects of Black life which will enable them to be more effective in their work. Also for these students, as well as others, it is hoped that a deeper appreciation for and a recognition of contributions of Blacks will be realized.

A student can design an interdisciplined program of specialization in Black Studies leading to a B.A. degree. Students interested in pursuing such a degree should contact Dr. Arvarh E. Strickland in the History Department. He is Chairman of the Black Studies Committee and the program advisor (882-6662).

Undergraduate students who have majored in Black Studies have applied for graduate or professional study in such areas as criminal justice, public administration, history, law, counseling, political science, education, and social work.

There is a Black Studies Office located at 207 Hill Hall under the direction of Dr. Carolyn A. Dorsey, Coordinator of Black Studies and Associate Professor of Higher Ed. The work done out of this office is designed to enhance Black Studies courses; and in the wider community, to help teachers



**Darlene B. Dixon, Secretary Provost/Black Studies Program**

incorporate Black Studies in their curriculum through pre-service and in-service seminars; also to help promote the development of Black Studies as a discipline throughout the nation. A Black Studies Newsletter is circulated monthly. Program personnel are affiliated with the National Council for Black Studies and the Association for the Study of Afro-American Life and History. Both organizations were instrumental in establishing the Missouri Council for Black Studies and remain active members.

There is a Black Theatre Workshop sponsored chiefly through the Black Studies Program. The group stages productions from the Black Experience annually. Interested students should call the Black Studies office at 882-6229 or 882-4326. Ms. Darlene B. Dixon is program secretary.

## CURRICULUM

**Child and family development**  
341—MULTI-CULTURAL STUDY OF CHILDREN AND FAMILIES

Ms. Lois Bryant

351—THE BLACK FAMILY  
Ms. Lois Bryant

### English

104—AFRO-AMERICAN LITERATURE

Dr. Walter Daniel

304—AFRO-AMERICAN LITERATURE

Dr. Walter Daniel

### Higher Education

k377—WOMEN AND MINORITIES IN HIGHER EDUCATION

Dr. Carolyn Dorsey

### Library Science

351—BLACK WOMEN: CATALYSTS FOR CHANGE

Dr. Mary Lenox

### History

130—AFRO-AMERICAN HISTORY

391—AFRO-AMERICANS IN THE TWENTIETH CENTURY

438—READINGS IN AFRO-AMERICAN HISTORY

439—SEMINAR IN AFRO-AMERICAN HISTORY

Dr. Arvarh Strickland

### Social Work

380—SOCIAL WORK PRACTICE WITH MINORITIES: AFRO-AMERICAN EMPHASIS

Professor Araminta Smith

301—TOPICS:WORKING WITH MINORITY YOUTH

Professor Erma McMurray

### Sociology

139—THE BLACK AMERICANS

Dr. Michael Woodard

### Speech and Dramatic Art

101—BLACK THEATRE WORKSHOP

Mr. Clyde Ruffin



---

Today is a reality  
Tomorrow a dream  
Yesterday a memory,  
or so it seems.

Today we manage  
Tomorrow we explore  
Yesterdays memories,  
paths through doors.

Today we prepare  
Tomorrow we part  
Yesterdays memories,  
inplanted in our hearts

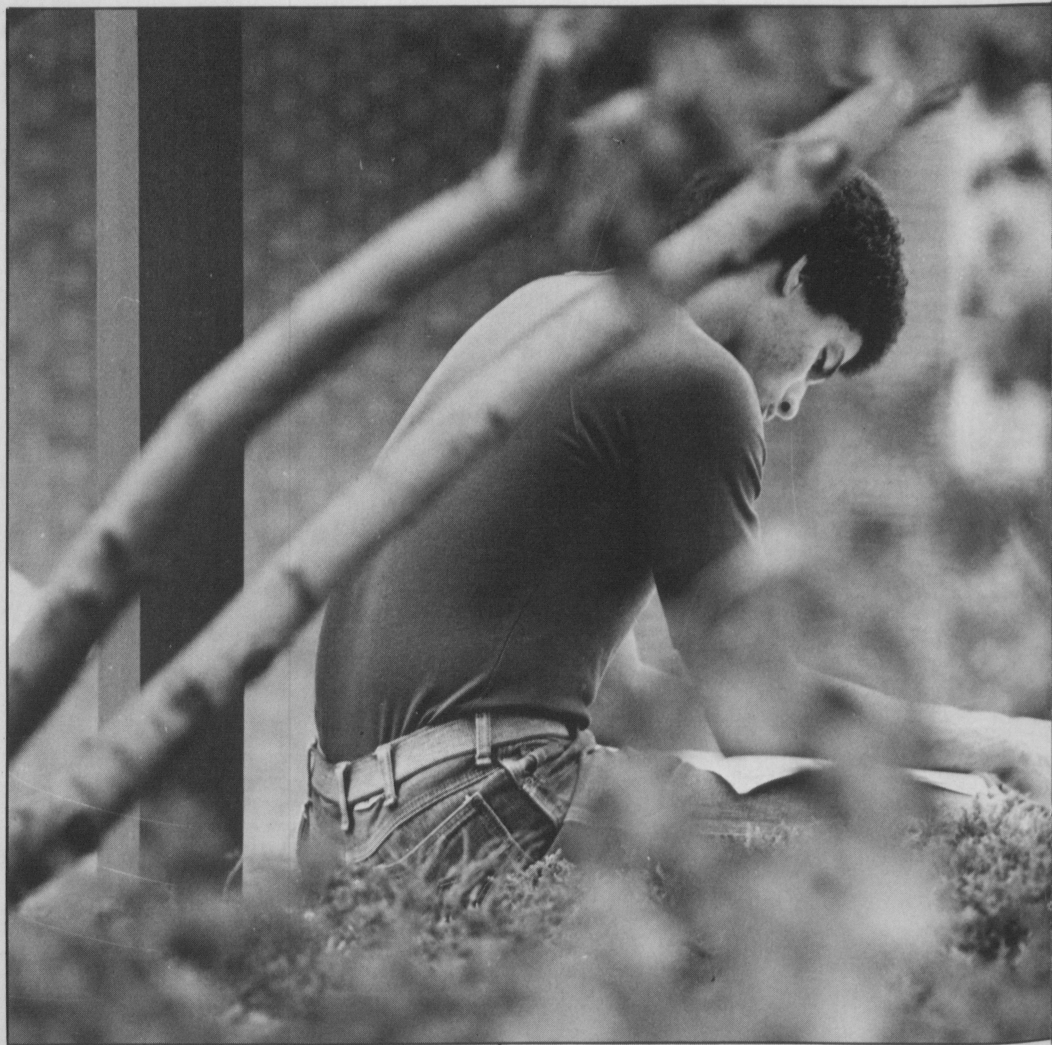
Author  
Unknown



# GRADUATE STUDIES

**I**T is the mission of the University of Missouri-Columbia to continue to produce graduates who are contributing to the development of American society in positive ways. Cognizant of

**T**HE major goal of this office is to increase the enrollment and reduce attrition of minority students in under-represented departments consistent with the affirmative action goals of the University of Missouri-Columbia.

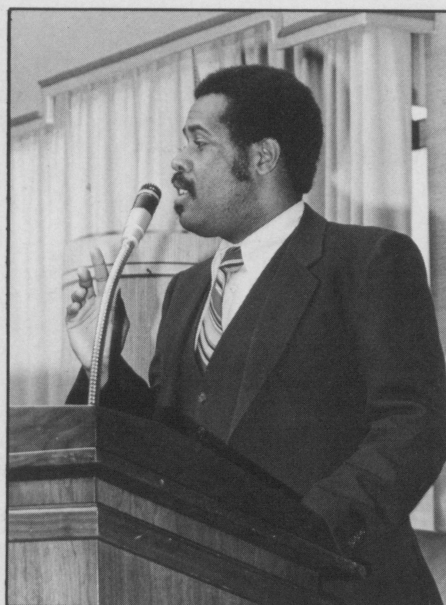


minority students' potential contribution to society and mindful of their rightful opportunity to participate, the Graduate School implemented the

Graduate Student Affairs Office in August, 1979 to identify areas of graduate study where there is an under-representation of minority students.



The Graduate Student Affairs Office was designed to increase the enrollment of minority graduate students and is administered by the Graduate



**Dr. Stephen D. Sneed, Asst. Dean Graduate School**

School and Office of Research with the cooperation of departmental officials in the University.

The major goal of this office is to increase the enrollment and reduce attrition of minority students in underrepresented departments consistent with the affirmative action goals of the University of Missouri-Columbia. The objectives are:

- \*identify minority students who have the interest and potential for graduate studies;
- \*enhance such individuals'

awareness of program offerings and career opportunities at UMC;

\*assist departmental efforts to recruit and retain minority graduate students;

\*maintain a central clearinghouse of information and resources;

\*initiate a longitudinal study on attrition of UMC black graduate students;

\*identify support services to ensure success in graduate school.

Program activities include recruitment, guidance and support services. A series of informational and educational career activities are planned for the benefit of minority graduate students. The latest materials, resources and grant information are available in the office. For more information concerning The Graduate Student Affairs Office, you may call or visit Dr. Stephen D. Sneed, located in 321 Jesse Hall, UMC, Columbia, MO. 65211 or call (314) 882-6311.



# BLACK FACULTY

**Bryant, Lois**  
Instructor  
Child and Family Development

**Daniel, Walter C.**  
Professor of English and  
Director of General Studies

**Dorsey, Carolyn A.**  
Coordinator of Black Studies and  
Associate Professor of Higher  
Education

**Enyart, Yolanda**  
Assistant Instructor  
Home Economics-Extension

**Fuller, Mirian M.**  
Instructor  
Library Science

**Gautt, Sandra W.**  
Associate Professor  
Special Education

**Grimes, Mabel J.**  
Assistant Professor  
4-H-Cooperative Extension

**Holmes, Richard**  
Professor of Nuclear Medicine  
and Chief of Nuclear Medicine

**Ingram, Ellis A.**  
Assistant Professor  
Pathology

**Jefferson, Debra J.**  
Assistant Professor  
Agriculture Education

**Lenox, Mary F.**  
Dean  
Library Science

**McBride, Francelle**  
Instructor, Broadcasting,  
KOMU Television Station

**McDonald, Mary B.**  
Program Coordinator  
Medical Dietetics

**McLeod, John D.**  
Assistant Professor  
Music

**McMurry, Erma M.**  
Assistant Professor  
Social Work

**Miller, Patricia**  
Professor, Music Department

**Robertson, William E.**  
Professor  
Community Development

**Ruffin, Clyde**  
Associate Professor  
Speech & Dramatic Art

**Smith, Araminta L.**  
Associate Professor  
Social Work

**Stewart, Jenice**  
Assistant Professor,  
School of Accountancy

**St.Omer, Vincent**  
Associate Professor  
Veterinary Anatomy Physiology

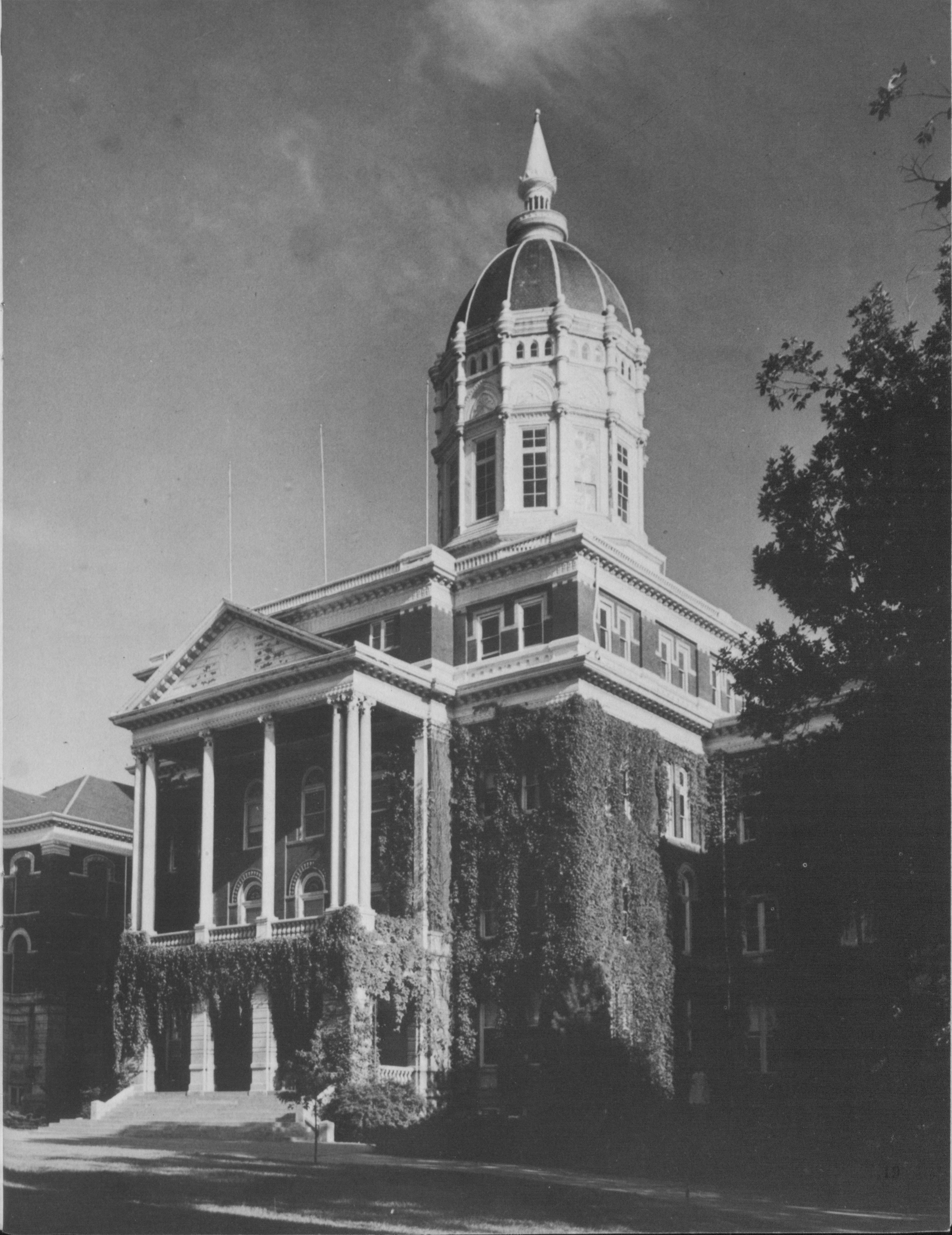
**Strickland, Arvarh E.**  
Professor  
History

**Terrell, Robert L.**  
Associate Professor  
School of Journalism

**Woodard, Michael**  
Assistant Professor  
Sociology

Revised and completed:  
January, 1984

**Jesse Hall**





# BLACK ADMINISTRATIVE STAFF

**Agee, Lela B.** Secretary,  
Facilities Utilization

**Amos, Derick**  
Police Sergeant

**Armstrong, James B.**  
Producer/Director,  
KBIA FM Radio Station

**Baker, Freddie L.**  
Resident Association,  
Vice Provost Extension

**Ballenger, Sandra K.**  
Instructor, Health Related Professions  
Physical Therapy

**Briscoe, Stephen A.**  
Police Officer

**Brooks, George C.**  
Director of Student Financial Aids

**Canton, Mary Ann**  
Secretary, Student Financial Aid

**Cason, Rozita J.**  
Clerk II, Student Financial Aid

**Dixon, Darlene B.**  
Secretary, Provost/Black Studies  
Program

**Dula, Brandon**  
Advisor  
Greek Life

**Elbert, Chaneta Y.**  
Secretary, Residential Life

**Elbert, Wanda L.**  
Stenographer, Romance Languages

**Ejigu, Gebeyehu**  
Director of Property/  
Risk Management

**Eubanks, Charles L.**  
Manager  
Food Service-ICA Dining Hall

**Gover, Freda**  
Graduate Assistant Coach  
Women's Basketball

**Grimes, Paulette**  
Assistant Director  
Minority Student Programs

**Haywood, Angela**  
Coordinator  
Black Alumni Association

**Hickem, James E.**  
Assistant Manager  
Food Service-Memorial Union

**Hightower, Regina W.**  
Administrative Secretary,  
Chancellor's Office

**Horrell, Barbra A.**  
Training/Development  
Coordinator  
Vice Provost Extension  
Medical Sciences

**Jackson, Otis A. (Dr.)**  
Assistant Provost  
Provost Office

**Jefferson, Jeanette**  
Licensed Practical Nurse,  
Outpatient-Hospital & Clinics

**Johnson, Wanaca**  
Secretary/Steno, Student  
Financial Aid

**Jones, Eugene L.**  
Assistant Coach  
Basketball

**McDonald, Rodney**  
Supervisor  
Medical Practice Income Plan

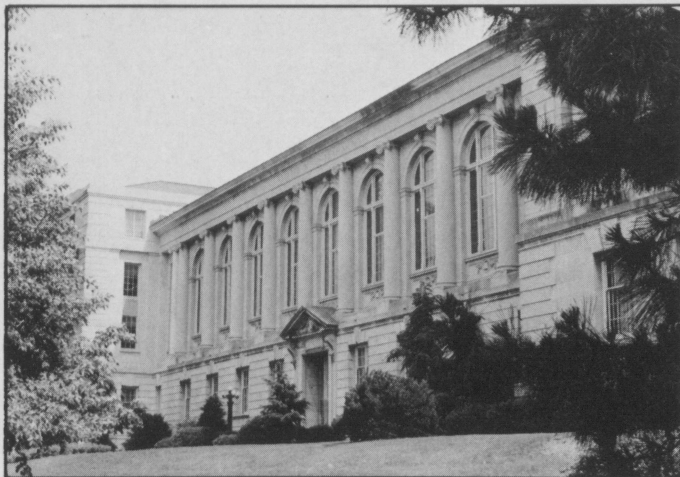
**McDonald, Shelia**  
Coordinator  
Financial Aid Advisor

**McKee, Freda**  
Administrative Secretary, Vice  
Chancellor Student Services

**Matthews, Yvonne**  
Coordinator of Minority  
Student Programs-Home Economics

**Miller, Wiley**  
Counseling Psychologist  
Counseling Center

**Minor, Susan**  
Secretary Stenographer,  
Payroll & Student Accounting



**Ellis Library**

**Monroe, Genevieve**  
Senior Secretary,  
Equal Opportunity

**Nave, Larry E.**  
Police Officer

**Oglesby, James R. (Dr.)**  
Director  
Facilities Utilization

**Richardson, Sue**  
Senior Secretary,  
Public & Alumni Communications

**Robinson Willie L.**  
Coordinator  
Black Culture Center

**Roberts, Betty**  
Management Analyst,  
Office & Computing Systems

**Shepard, Eric**  
Police Officer

**Sneed, Stephen D. (Dr.)**  
Assistant Dean  
Graduate School

**Taylor, Mark**  
Broadcast Engineer II,  
Vice Provost Extension

**Tindall, Lealure**  
Senior Secretary,  
Social Work

**Tipplin, Keener A. (Dr.)**  
Assistant Director  
Admissions

**Thornton, Leona E.**  
Library Assistant I  
Ellis Library

**Tolson, Lois Y.**  
Senior Secretary  
College of Engineering

**Tolson, Wilfred L.**  
Manager  
Patient Admissions

**Waits, Carol S.**  
Personnel Associate,  
Personnel Services

**Washington, Johnny E.**  
Chef, Memorial Union/  
Brady Commons

**Webb, Stephanie**  
Senior Clerk Typist,  
News Services

**Williams, Frances D.**  
Secretary, Central  
Food Stores UMCA

**Williams, Rose M.**  
Administrative Assistant  
Student Financial Aids

**Wilson, Frances**  
Research Associate  
Graduate School

**Wilson, Pat K.**  
Secretary, Dean of  
Medicine  
Woods, Sandra K.  
Chief Clerk,  
Student Financial Aid

**Zanders, Alton (Dr.)**  
Director of Equal Opportunity



# FINANCIAL AID

**T**HE cost of a college education is constantly increasing. As such, financing your college education will be an important consideration. Don't let the money problem deter you. If you think you need financial aid do not hesitate to inquire at the Student Financial Aids Office, 3 Jesse Hall, Columbia, Mo., 65211, 882-7506

There are a few facts you should know regarding financial aid. First, to apply for financial aid you must complete either a Family Financial Aid Statement (FFS) or a Financial Aid Form (FAF). By completing either of the two forms, all aid, (loan, grant, scholarships) which make up your financial aid packet, money will be awarded to you based upon your eligibility. When you fill out this packet you are applying for Pell Grant (formerly BEOG), Missouri State Grant, work-study, Supplemental Educational Opportunity Grant (SEOG), and a university scholarship. You will not need to fill out any other form unless you are applying for a Guaranteed Student Loan or a Military Scholarship.

Second, the deadline for submitting a financial aid form is April 15. If you submit your application after this date, the likelihood of receiving financial aid decreases. Listed below are the major forms of financial aid at UMC.

## **PELL GRANT (formerly BEOG)**

Source of funds: federal government.  
Eligibility: undergraduate students with financial need.  
Amount of aid: maximum \$1,750 per year.  
Repayment: none.  
Limitations: availability and amount are dependent upon congressional action.  
Renewal: continued need, satisfactory academic progress.

## **SUPPLEMENTAL EDUCATIONAL OPPORTUNITY GRANT (SEOG)**

Source of funds: federal grant.  
Eligibility: undergraduate students, financial need.  
Amount of aid: up to \$2,000 per year.  
Repayment: none.

*Continued*







# PICTORIAL



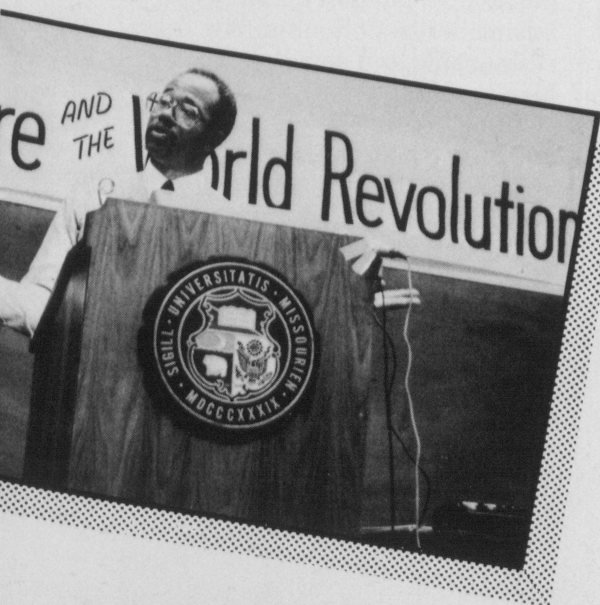
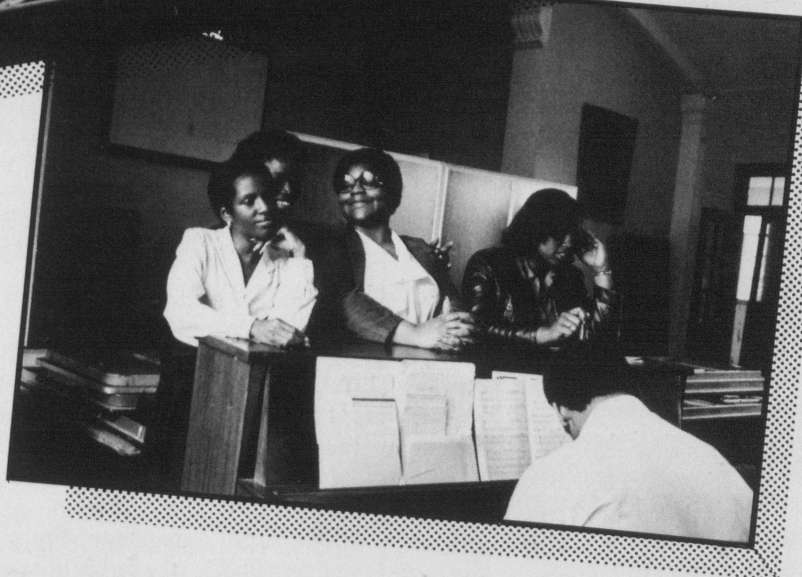
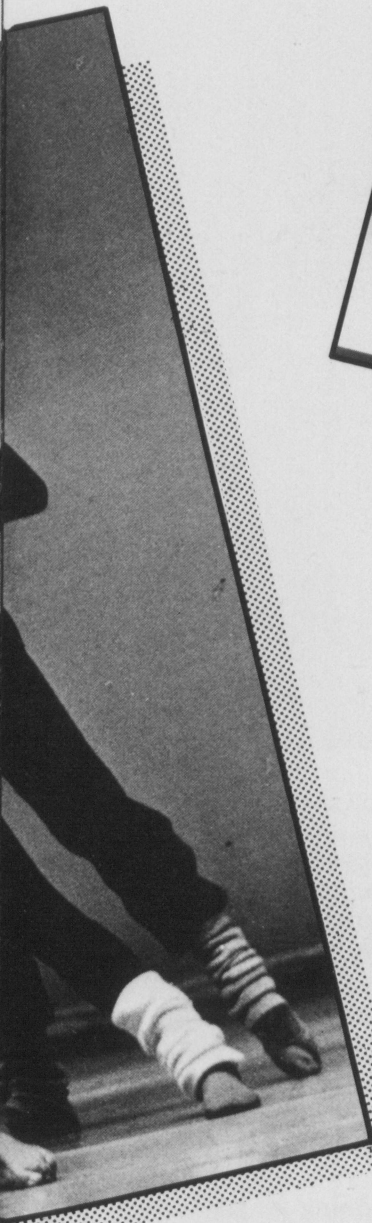
# PERSPECTIVE





America's Future





## FINANCIAL AID (continued)

Renewal: good academic standing and continued need.

Limitations: continued need, satisfactory academic progress.

### NATIONAL DIRECT STUDENT LOAN (NDSL)

Source of fund: federal government and UMC.

Eligibility: U.S. citizen, satisfactory academic standing, and financial need.

Amount of aid: maximum \$1,500 per year for undergraduates, \$2,500 per year for graduates.

Repayment: begin repaying loan nine months after you leave school at a four percent interest rate.

Renewal: continued financial need, satisfactory academic progress.

Limitations: the maximum amount which can be borrowed is \$6,000 for undergraduates, and \$12,000 for graduate or professional students.

### UNIVERSITY LOANS

Source of funds: gifts from alumni, business firms, foundations.

Eligibility: any student with financial need.

Amount of aid: varies according to



George Brooks, Director Financial Aid

**T***HE Cost of a college education is constantly increasing...don't let the money problem deter you.*

need.

Repayment: Begin repaying five months after leaving school at maximum four percent interest rate.

Limitations: good academic standing.

Short term loan: short term loans are available to students who need funds for emergency expenses.

Loans have to be repayed by the end of the semester in which they were borrowed. The amount of the

loan is usually not large.

Long term loan: long term loans are made to students who wish to repay sometime following the end of the semester or beginning five months after leaving school. A long term loan may count against your financial aid packet.

### WORK

If you are looking for part-time employment there are several places you can go. Local businesses in Columbia like restaurants and stores generally hire students.

The UMC Personnel Service, 307 Hitt St. has a list of part-time opening for clerical or secretarial positions and lab assistants.

The Job Location Program, 110 Noyes Hall can also help you find employment in areas off-campus which may be professionally related to your course of study.

Other places of employment like Ellis Library, bookstores, campus cafeterias, or an individual

academic department hire from their own personnel units.

### **GRADUATE STUDENT AID**

Financial aid from the UMC Financial Aids office for graduate students consist of loans and part-time employment.

Requests for scholarships, grants, fellowships, assistantships, etc., should first be directed to either the Dean of the Graduate School, 205 Jesse Hall, or to the chairperson of the department in which you wish to study.

Occasionally your department may not have sufficient funds to sponsor an assistantship. It is possible, however, to seek out other sources of funding. There are matching funds available to departments. Contact the Provost of Academic Affairs, 114 Jesse Hall.

Other additional information regarding graduate aid programs see the section on Affirmative Action.

### **WORK—STUDY EMPLOYMENT**

Source of fund: federal grant and UMC.

Eligibility: financial need with consideration for students from low-income families.

Amount of aid: minimum wage



**Shelia McDonald, FA Advisor**

earned up to calculated need.

Repayment: none.

Renewal: continued need, satisfactory work performance, satisfactory academic progress.

### **GUARANTEED STUDENT LOAN**

Source of funds: private banks or lending agencies.

Eligibility: currently enrolled UMC students.

Amount of aid: maximum \$2,500 for dependant undergraduates, \$5,000 for graduates or professional students per year.

Repayment: begin repaying loan six months after you leave school

at a nine percent interest rate.

Renewal: approval from the lender, certification by Financial Aids office, satisfactory academic progress.

Limitations: total debt incurred may not exceed \$10,000 for undergraduates, \$25,000 for graduates or professional students.

### **NURSING LOAN PROGRAM**

Source of fund: federal government and UMC.

Eligibility: U.S. citizen or permanent resident enrolled in the School of Nursing, financial need, graduate or undergraduate.

Amount of aid: maximum of \$2,500.

Repayment: begin repaying nine months after leaving school.

Renewal: satisfactory academic progress, continued financial need.

### **MIITARY SCHOLARSHIPS**

Army, Navy, and Air Force ROTC each offers two and three-year scholarships to students currently enrolled in UMC.

Scholarship benefits consist of full tuition fees, book expenses and a \$100 per month allowance during your junior and senior year. For further information call or write the Army, Navy, Air Force ROTC, Crowder Hall, UMC Army-882-7721; Navy-882-6693; Air Force-882-7621.



# HOUSING

## ON CAMPUS

**A**N important consideration when coming to the University is housing. There are many different styles of living while in school and it is important to take care to select what suits you best. About one-half of the students at UMC reside in residence halls. Therefore, housing aspect of a black student is very important.

The University residence halls can be an enjoyable place for Black students if care is taken in choosing the right environment. The choice of a roommate is something that you will want to consider. This person, whether Black or White, holds a special place in your University experience. He or she is the person that you will eat, sleep, and attend campus functions with at least until you get to know others. If you have a friend who will be attending MU and would like to room with him/her, it is imperative for you to request each other as roommates choices.

Some students have found that rooming with an old friend limits their exposure to other students and therefore retards their social development. Still, others find that a friend eliminates the need to adapt to

the habits of a stranger.

It is recommended that freshmen students live in dormitory housing, at least during the first year; for it helps you to get settled into college life without the hassles of landlords, grocery shopping, or monthly rent. By living in a dormitory you will be in closer contact to other students and will be closer to other Black students.

There are, however, disadvantages to living in a dormitory. For example, you will be subjected to more stringent rules. There are restrictions about what times of the day you are permitted to have members of the opposite sex visit your room. Also, there are quiet hours that are enforced.

More serious are the problems which can arise with some White residents in the dormitory. The differing backgrounds of many Whites and Blacks sometimes calls for some adjustment and may lead to a hostile atmosphere.

Traditionally, large numbers of Black students have chosen to live in a particular few of the residence halls. Those halls are: Gillette-Hudson (men and women), Cramer and Stafford in the Pershing group (men), and Laws in the Laws, Jones,

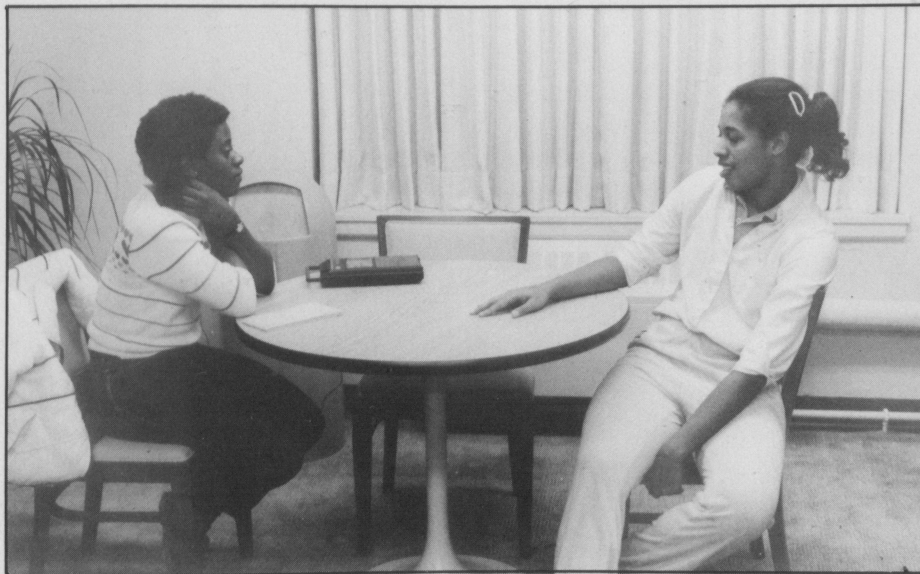
and Lathrop group (women). If you prefer to live among a considerable number of Blacks, any of these dorms would probably be a good choice.

Each hall is supervised by a Head Resident in charge of the overall operation of a residence hall. Resident Assistant (RA's) reside on most floors and are responsible for maintaining contact with residents, providing assistance with problems and encouraging participation. There are house governments within each residence hall that plans social, athletical and educational programs for their "house".

If you are a junior, senior, or graduate student and would like to cut your college cost, it is suggested that you apply for a position as a resident assistant (RA) in your dorm. You will receive free room and board. Applications are due in January and can be obtained from the Residential Life Office, 125 Jesse Hall or from the Head Resident or RA.

Should you become dissatisfied with the programming in your dorm or would just like to offer your input, the best step to take is to join a house or dorm council.

The Residential Life office has established a position to meet minority needs in the UMC



**T**HE University residence halls can be an enjoyable place for Black students to live if care is taken in choosing the right environment...the choosing of a roommate is something that you want to consider also.

Residence Halls. A student liaison is there to help you with any problems that may arise in the dorms and to encourage programming to meet the needs of all UMC students. Contact the Housing Office, 123 Jesse at 882-4070.

## HOUSING OFF CAMPUS (continued)

**M**ANY upper-class students prefer to live off-campus. When considering this move, remember the following:

1. Most of the time off-campus living is more expensive if you choose to live in a large complex. Rent may be anywhere from \$100 to \$350 a month for a one or two bedroom apartment. The further away from campus the cheaper the rent. Other cost factors include utilities, phone, and grocery bills. Although some of the complexes have shuttlebus services, the high cost of transportation may still present another drawback.

2. Start looking for an apartment early. If you wait until June or July to look for a fall apartment, chances are most of the better places will be taken. Look carefully. The place you choose may be your home for the next year.

3. Moving off-campus is more than having your own room; it entails a lot of responsibilities. You are now a citizen of Columbia and the utility and

phone company will not consider the fact that you are a student when bills become due.

4. Renting a room can be the cheapest way to live off-campus, but you should take into consideration who your landlords are and face the possibility that some of your freedom may be restricted.

5. Trailer courts are another possibility, although most are

**M**OVING off-campus is more than having your own room; it entails a lot of responsibilities.

located a good distance from campus. If you are careful you can get a good deal by renting a mobile home. Mobile home tenants have far more restrictions than any other form of off-campus living so talk to the management and tenants before making a decision.



A good place to get information during the summer months is the Off-Campus Housing Office, 121 Gentry Hall. Phones and counselors



are available to help you locate housing and answer any questions you may have. During the fall semester this information can be

obtained in the Housing Office 125 Jesse Hall.

The 1966 Civil Rights Act prohibits discrimination on the

basis of race. If you feel you have been "steered" away from a particular rental unit because you are Black, contact members of the Columbia Commission on Human Rights and Community Relations, 874-7208.



# BETWEEN THE BOOKS

**T**he University has a set of regulations guiding recognized student organization. These policies are listed extensively in the M Book and should be read carefully. If you want to establish a new organization, the committee on Student Organizations, Government and Activities (SOGA) has a set of procedures for doing so. Contact Guy Conway, Assistant Director for Student Development, 215 Read Hall. Call 882-6638 for additional information in this area.

A few procedures are worth mentioning regarding recognized student organization. First, each academic year your organization will need to register and submit an annual report to the Office for Student Development, 215 Read Hall, in order to maintain the privileges accorded recognized student organizations. As a recognized student organization you are entitled to make use of campus mail, the copy room, the Media Center and campus facilities.

If your organization needs to

reserve a room other than those in the Memorial Union or Brady Commons, you first need to contact the building coordinator, obtain his/her signature and

**A**s a recognized student organization you are entitled to make use of campus mail, the copy room, the media center and campus facilities.

finally have the form signed by Guy Conway. Rooms have to be reserved three weeks in advance. Also, in the future, your organization needs to check with building officials for the proper location of flyers and posters. The University will begin charging a fee for their removal.

*Continued*

JAN.-MAR.  
1982

APR.-JUNE  
1982

N. S.  
67-69  
JULY-SEPT.  
1982

054

054

ESPRIT

N. S.

70-72

OCT.-DEC.

1982

654



## STUDENT ORGANIZATIONS (continued)

### ALL GOD'S CHILDREN

**A**LL God's Children is designed to bring students into total Christian Fellowship of campus living. It's an attempt primarily by students for students to provide opportunities for fellowship and worship in an informal setting. Emphasis is placed on the Bible as the divine Word of God and not on the doctrine of a particular denomination. Anyone seeking a greater understanding of a faith in Jesus Christ and who is looking to share his/her experience with others is welcome.

We invite you to check us out by coming to the Baptist Student Center on Tuesday evenings 7-8:15 p.m. and share in the fellowship, Bible study and music.

### SOCIETY OF BLACK ENGINEERS

**T**HE Society of Black Engineers is an academic organization geared toward black students pursuing and engineering degree at UMC. It is dedicated to the development of intensive programs for increasing black participation in the field of engineering and engineering technology. These programs are meant to aid SBE members in acquiring the skills necessary for an engineering career as well as access them to information and people that can help them make the right scholastic decisions.

The UMC chapter of the Society of Black Engineers was founded in 1971 and chartered through the national chapter in 1978. Since its inception SBE-UMC has served to strengthen relations between professional industry and the black student population. It has also begun building solid programs and resources that will aid students in their classes and labs. These resources include an engineering test and problem file and counseling to help underclassmen.

S.B.E.'s yearly activities

include plant field trips, and annual awards banquet, a resume book, the Engineer's Week parade and a year-end picnic. Also, to maintain its national obligations, SBE—UMC sends delegates to a National and Regional Convention each year. The National Covention will be held in Washington D.C. this year.

The Society of Black Engineers also has speaker presentations from engineers of corporations such as Monsanto, McDonnell Douglass, Proctor and Gamble and Black and Veach. These speakers discuss current happenings in the engineering field as well as how they have adapted to their new office environment. They also enlighten S.B.E. members on what they need to succeed in the field of engineering.

S.B.E. has study sessions in the evening where members come together to discuss problems that they might be having with a certain class. This gives each student the opportunity to acquire assistance from students that have already had the class or have a better understanding of the information.

## MINORITY JOURNALISM ASSOCIATION

**T**HE Minority Journalism Association, formally known as the Black Journalism Student Association, was re-established on UMC campus in 1979. MJA acts as a support system for both pre-journalism and journalism students, with its major emphasis and goal on retention of journalism students. MJA offers advisement to pre-journalism and journalism students and keeps its members informed of upcoming events in the school. MJA also tries to provide positive role models for its members by inviting minority journalists to speak to its members.

## BLACKS IN PURSUIT OF MEDICINE

**B**LACKS in Pursuit of Medicine is a newly founded organization on the University of Missouri-Columbia campus. Founded in the fall semester of 1980 BPM has already made itself known as an organization with potential. The purpose of BPM is: to assist, inform, and inspire, preallied-health students. The road to professional school is a long and rough one; BPM is here, not to fill you with false hopes, but to inform, not to discourage but to inspire.

## LEGION OF BLACK COLLEGIANS GOSPEL CHOIR

**T**HE LBC Gospel Choir was founded in 1973 Ladell Flowers and Betty Pate. Both of these individuals have since graduated from UMC and are leading very productive careers, but have stayed very involved with the choir through their spiritual and financial support.

The choir is active in campus and community functions with the support of campus faculty and staff and the community at large. With this support they have been successful in spreading the gospel through song and praise in many cities and states. We welcome all who will help us and themselves grow in abundance until our cup overflow. We state that you need not know how to sing or have any special talents, for we are not talent agents seeking auditions; we are people helping people through Christ. Our goal is to praise God through through song, prayers and meditation.



# BLACK GREEKS

**T**HE eight Black Greek letter organizations on campus provide a wide variety of activities and services to the campus, community and nation.

Obtaining membership in Greek organizations is quite different from that of others. Most require successful completion of interviews, and a pledge period prior to membership rank.

If you are interested in becoming a member, all of the sororities and fraternities have "rushes" or "smokers" during the semester at which time you can meet members and ask questions. All of the Greek organizations discourage pledging during your first freshmen semester, and most require a minimum grade point average (GPA) of 2.0 (many require higher).

You can contact each of these organizations through their mailboxes in 200 Read Hall.

---

## ALPHA KAPPA ALPHA

**A**LPHA Kappa Alpha Sorority, Inc., the oldest Black Greek letter sorority, was established in 1908 at Howard University, Washington, D.C. The Delta Tau chapter of Alpha Kappa Alpha began at UMC in 1964.

The Delta Tau chapter has sponsored a cancer drive, participated in CROP (a walk-a-thon for hunger), and worked with incoming minority students. The chapter has also participated in a marchdown for community children, a Can Dance to collect food for needy families, and sponsored the annual Nora Stewart Easter egg hunt for community children. Delta Tau sponsors Alpha Week (a week which combines social and service activities). The major social event is the Ivy League Ball which honors outstanding Black men on campus.

Alpha Kappa Alpha emphasizes leadership, the arts, health, heritage, and life-long learning.

---

## DELTA SIGMA THETA

**D**ELTA Sigma Theta is a public service sorority emphasizing scholarship, community service and character. Founded at Howard University in 1913, it now has over 100,000 members in 650 chapters around the world.

Epsilon Psi chapter of Delta Sigma Theta Sorority, Inc. was founded at the University of Missouri-Columbia in 1966. Annual activities include Woodhaven Halloween party; Punt, Pass, and Kick Olympics; World of Work Week; voter

registration and the King of Hearts Ball. Fund raisers are held throughout the year with proceeds going to the United Negro College Fund, American Cancer Society, and CROP.

The jewel of Delta Sigma Theta is the pearl and their colors are crimson and creme.

---

## ZETA PHI BETA

**Z**ETA Phi Beta was founded in 1920 at Howard University. The encouragement given to the founders of Zeta by two members of Phi Beta Sigma established the only official brother-sister Greek letter relationship. Since that time the organization has grown to over 45,000 members in 300 graduate and undergraduate chapters. The membership is international in scope and covers areas such as the continent of Africa, where Zeta was the first Greek letter organization.

The objectives of Zeta Phi Beta are finer womanhood, service, sisterhood, and scholarship.

Chi Kappa, the local chapter in Columbia, recruits interested young ladies from all three college campuses. In keeping with the ideas of the sorority, the members of Zeta in Columbia can be found actively participating in community service activities which include: visiting

ФВЕФ

КХХ

ФФФ

АФА

ФГГ

ЗФВ

АКХА

АЕО

## BLACK GREEKS (continued)

hospitalized individuals, magazine collection drives, and community teas at Oak Towers. Scholastically the local members have collectively received the award for sorority achievement, and academic achievements.

Annual functions include: Founders Day observance, Finer Womanhood Month and the Serenade in Blue Ball.

**T**HE eight national Black Greek letter organizations on campus provide a wide variety of activities and services to the campus, community and nation.

### SIGMA GAMMA RHO

**T**HE Alpha Rho chapter of Sigma Gamma Rho chartered at UMC in 1972. The order of Sigma

Gamma Rho attracts women of all fields of higher education who are devoted to giving leadership, services and resources toward alleviating discriminatory barriers. Community service, leadership training, and education of youth are a hallmark of the organization. Annual projects include film night for hospitalized children, the March of Dimes toll roads, and a slave auction (proceeds go towards a scholarship for a UMC student).

### PHI BETA SIGMA

**P**HI Beta Sigma fraternity, Inc., an international organization of college and professional men, was founded in 1914 at Howard University. As one of the predominantly Black Greek letter organizations Phi Beta Sigma has a membership of over 85,000 with 400 campus and alumni chapters throughout the United States, Africa, Switzerland and the Bahamas.

Being both a social and service organization, Phi Beta Sigma has three major programs: education, bigger and better business, and social action. In order to implement these and other programs, the fraternity works with other organizations such as

the Panhellenic Council (local and national), the NAACP, Urban League, National Foundation-March of Dimes, National Boys Club of America, etc.

The Eta Gamma (local) chapter of Phi Beta Sigma was founded at UMC in 1973. The organization places heavy emphasis on academics. The minimum GPA requirement for acquiring membership is 2.5. The organization is involved in a number of civic projects including an annual Easter egg hunt for underprivileged children and assisting in a community tutorial program. The traditional social activity is the Ebony Ball.

### ALPHA PHI ALPHA

**A**LPHA Phi Alpha, the first and oldest Black Greek organization, was founded in 1906 at Cornell University, Ithaca New York. Proud of its heritage and history, APA is aware of its responsibility as an international body of college trained men dedicate to serving mankind. Alpha's declares its role in the struggle for human development. Its motto, "First of all, servants of all, we shall transcend all."

To do so this fraternity begins by appealing to the integrity and pride of men and women of

goodwill of all races. They start with themselves. Alpha asks every brother, of every chapter, of every region to develop and expand with firm goals for improving the lot of those who are less fortunate than they.

The brothers of Zeta Alpha chapter had the distinct honor and privilege of being named the undergraduate Chapter of the Year for the state of Missouri at the 1981 Alpha Phi Alpha Missouri State Convention hosted by UMC.

Zeta Alpha is a non-profit organization with civic and social functions such as the Senior Award's Banquet, Easter egg hunt, Ladies Night Disco, Annual Halloween dance, and the Black and Gold Ball.

---

## OMEGA PSI PHI

**T**HE Epsilon Delta chapter of Omega Psi Phi was founded on the University of Missouri-Columbia campus in 1971 by James Robinson. Omega is recognized nationally as a service organization dedicated to the support of all mankind.

The organization has its foundations on four cardinal principles: manhood, scholarship,

perseverance, and uplift. Epsilon Delta has demonstrated the ability to function in light of these through services for the campuses in Columbia and in the Columbia community.

Epsilon Delta carries with its name several district and national honors. They have been named Eighth District Chapter of the Year three times, received several scholar and aspiration awards and have brothers currently in several district offices.

Annually the brothers and little sisters work together in producing social functions, civic projects, and marching events. These include visits to Renz Farm Correctional Center, Let's Make a Deal Christmas party and cash/prize giveaway, raising money for the United Negro College Fund, Kwanza celebration, parties for children at the Medical Center and more.

Young men interested in pledging must complete twelve hours of college credit with a cumulative GPA of 2.5 or better.

---

## KAPPA ALPHA PSI

**T**HE Delta Omega chapter of Kappa Alpha Psi began its existence at UMC in 1960. Community service projects include contributions towards the United

Negro College Fund, Sickle Cell Anemia, and awarding a scholarship to an outstanding high school student. Annually, the fraternity host "Kappa Week" and the Crimson and Creme ball in conjunction with the women of Delta Sigma Theta, Epsilon Psi chapter. Kappa Alpha Psi is dedicated toward the advancement of Afro-Americans through achievement.

---

## BLACK PANHELLIC

**T**HE Black Panhellenic Council is the governing body for all of the Black Greek letter organizations on campus. The main goal of the council is to promote unity among those organizations, and to oversee the activities of its members. Two voting members from each organization and the Black Panhellenic officers comprise the council. The council co-sponsors a leadership conference with the Interfraternity Council and Panhellenic, a black leadership conference and a pledge show. Traditionally, Black Panhell organizes the Greek retreat, an All-Greek dance and a scholarship banquet. The Black Panhell office is located in 217 Read Hall, 882-8204.



# SPORTS

**T**HE following is a list of sports and Intramural activities offered at UMC and it's surrounding facilities. For those who are athletically inclined you are encouraged to participate and become a member of the mizzou team.

## **Intramurals Sports**

**Office:** 104-106 Rothwell 882-2066 (men and women)  
614 Kuhlman Ct. 882-2817 (co-ed)

## **Leagues:**

Fraternities  
Residence Hall  
Campus Leagues(men)  
Co-ed League  
Women's League

## **How to form a Team:**

- 1) Deadlines from teams to enter the league are posted and listed in the M-Book. Each sport has a different deadline.
- 2) Team managers must enter their teams, (some sports are for individuals) at the appropriate intramural office.
- 3) Pairings and scheduling will be made available.
- 4) The Manager and team are responsible for reporting for competition at scheduled times. Official intramural sports officials will be present for each game. All students are eligible to officiate, interested students will be given

training. Some team managers meetings will be held.

**Football:** MSA holds a lottery around the beginning of September for football tickets. This has replaced the old system of camping in line by the stadium. Lottery details will be publicized in the maneat. Any questions should be addressed to MSA 200 Read Hall, 882-8386. Groups of 10 to 125 may request group seating at the Athletic Ticket Office, 258 Hearn. The request must be made by early spring. A drawing will be held in the fall and payments must be made at the end of August.

If you purchase a Bengal Pack you get tickets for both football and basketball games. Order forms are available at both bookstores, and the Union, residence halls, frats and sororities, and the Hearn Ticket Office.

**Basketball:** The Sports information Office, 312 Hearn, 882-6501, ext. 211 can give you schedule information. The athletic Office can tell you about prices. Ticket sales will be announced.

**Cross-Country:** September through November

**Wrestling:** November through March

**Swimming and Diving:** November through March

**Golf:** March through May

**Tennis:** March through May  
**Sports:** Basketball and Gymnastics-Contact the Sports information Office for schedules, and the athletic Ticket Office for prices.

**Volleyball:** September through November

**Cross-Country:** September through October

**Tennis:** fall and spring

**Golf:** fall and spring

**Indoor Track:** January through March

**Softball:** March through May If you are interested in trying out for these sports, call the office and ask when tryout dates are. Scholarships are continually growing in women's sports.

---

## **SPORTS FACILITIES**

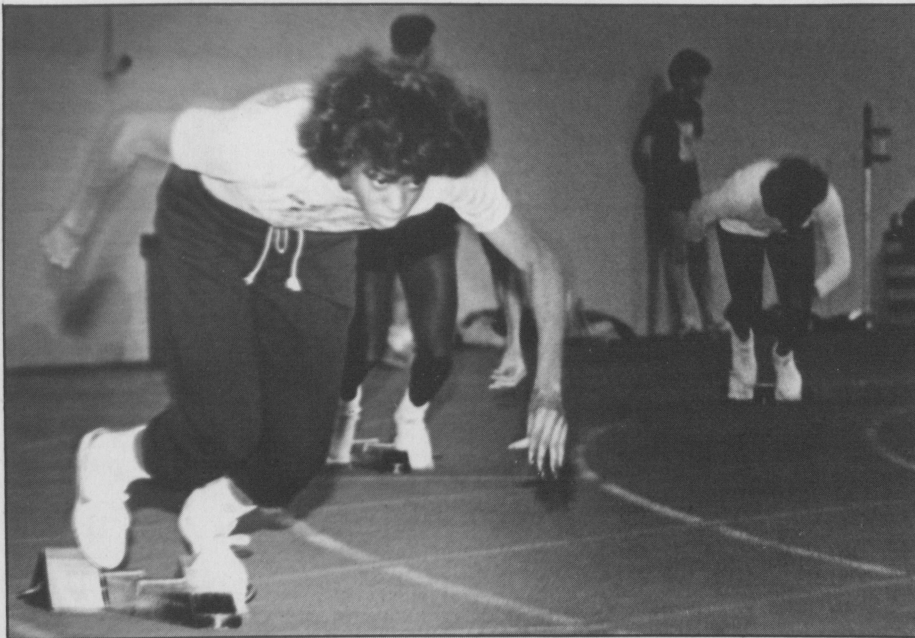
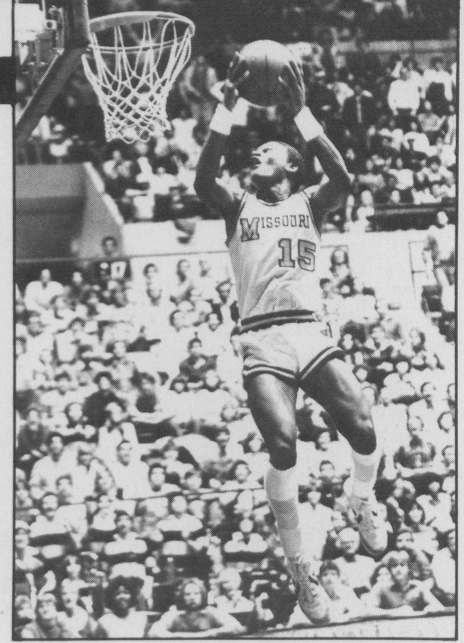
**Brewer Fieldhouse/  
Rothwell Gym  
882-8321 (ask for locker room)**

Volleyball, wrestling mats  
gymnastic equipment, table  
tennis, weight equipment, track,  
basketball, handball, racquetball,  
tennis courts. Sign up at 11:45 to  
use courts the next day.

**Mon-Sat:** 6am to midnight

**Sun:** 12pm to midnight

Students cannot use the gym for individual use when intramurals or gym class are in progress. Schedules are posted.



**McKee Gymnasium**  
882-3825

7pm to 10 pm Tuesday and Thursday (gym)  
2pm to 4pm Friday (pool)  
McKee also has a dance studio.

**Natatotium**  
882-3562

The hours for free swim may vary, call for correct times.

**Hearnes Center**  
882-2056

A schedule for "Free Play" for students is posted at the beginning of each week, but is subject to change because of intercollegiate athletic priorities.

**CITY SPORTS AND FACILITIES**

**Albert-Oakland Municipal Pool**  
Albert-Oakland Park, Blue Ridge Rd.  
474-5331

**Douglas Municipal Pool**  
312 N. Providence Rd.  
442-5019

**Hickman Municipal Pool**  
1104 N. Providence Rd.  
874-7476

**Lake of the Woods Municipal Pool**  
Lake of the Woods

**Recreation Center**  
6700 St. Charles Rd. 474-9067

**Municipal Golf Course**  
445-4213

**Cosmopolitan Park**  
West I-70 Drive

The Columbia Parks and Recreation Department sponsors league sports year-round for men and women. Once each season the department puts out a schedule of activities in the Columbia Missourian. You can also pick up one in the department office, 1S. 7th. Cosmo Recreation Center also offers a variety of activities craft classes, table games and tournaments. League sports offered are:

**WOMEN:**

- Softball-summer
- Volleyball-fall and winter
- Basketball-fall and winter
- Soccer-fall and winter

**MEN:**

- Touch football-fall and winter
- Volleyball-fall and winter
- Basketball-fall and winter
- Racquetball-fall and winter
- Softball-summer

**Spaulding Racquet Club**  
Bernadett Dr. off Worley  
445-8585

Open 6:30am to 10:30pm daily.  
Special student rate of \$35 per year.



# CITY OF COLUMBIA

**C**OLUMBIA, Missouri is approximately halfway between Kansas City and St. Louis on Interstate 70, and 30 miles north of Jefferson City. Founded in 1821, Columbia began with two public squares; it now has a population in excess of 65,000.

The community has been nicknamed "Collegetown U.S.A." because of the surrounding institutions: Columbia College, Stephens College, and the University of Missouri-Columbia. The black student government organizations at Columbia and Stephens colleges are (respectively) the Minority Student Organization and The Martin Luther King, Jr. Scholarship Association. These organizations offer many programs of interest to black students.

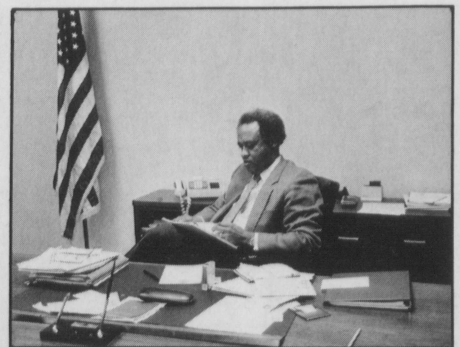
For recreational purposes there are a host of movie theaters, museums, and parks to choose from. The Missouri Theater, 203 S.Ninth St., is within walking distance of MU. Cosmos Park, Rockbridge Memorial Park, Reactor Park, and Douglass Park are but four of the many parks located within the area. Most offer a picnic area and facilities for sports.

Many students use Columbia's public mass transportation service, the Columbia Area

***T**HE community has been nicknamed "Collegetown USA" because of the surrounding institutions: Columbia College, Stephens College and the University of Missouri-Columbia.*

Transit System. Scheduled routes run daily throughout the city Monday through Saturday. Greyhound bus service operates daily on a regular schedule to Kansas City and St. Louis. The Ozark airline provides daily flights from Columbia's regional airport, 11 miles southeast of the city.

Speciality shops, department stores, and discount stores are located in the downtown shopping areas as well as the shopping plazas in the city's suburban areas. College students frequent the downtown area because of its



**William Dye, Police Chief**



**Blind Boone Drill Team**

proximity to the university.

For the next few years you will not only be a part of the university community but also a part of the Columbia community. The city offers academic, cultural, and social outlets for the college oriented individual as well as its residents. Discover the city and its people by taking advantage of its small town hospitality.

# AREA CHURCHES

**T**HE following is a list of churches in Columbia and surrounding areas. Most of these churches have predominantly black congregations. For times of worship you are encouraged to call these churches at the listed telephone numbers.

**Church of God (Holiness)**  
 3515 Valencia Drive  
 Columbia, Missouri  
 443-4915

**Fifth Street Christian Church**  
 407 North Fifth Street  
 Columbia, Missouri

**Friendship Baptist M.B. Church**  
 1410 Grand Ave.  
 Columbia, Missouri  
 449-5414

**Log Providence Church**  
 R.D. 1  
 Columbia, Missouri  
 442-4914

**Progressive Missionary Baptist**  
 702 Banks Ave.  
 Columbia, Missouri  
 443-0611

**Russel Chapel CME**  
 108 Ash  
 Columbia, Missouri  
 442-6003

**Second Baptist**  
 407 E. Broadway  
 Columbia, Missouri  
 449-4703

**Second Christian Church**  
 401 North Fifth  
 Columbia, Missouri  
 442-7713

**St. Paul AME**  
 Fifth and Park  
 Columbia, Missouri  
 442-7728

**Sugar Grove Missionary Baptist Church**  
 R.D. 1  
 Columbia, Missouri  
 449-1629

**United Pentecostal Church**  
 211 Benton Street  
 Columbia, Missouri  
 442-4121



**CHRIST  
 IS RISEN**

**Wright's Temple**  
 (Church of God in Christ)  
 8 Sexton Road  
 Columbia, Missouri  
 449-3206

**Churches outside Columbia:**

**Friendship Missionary Baptist**  
 Slater Missouri

**Holy Church on Madison**  
 Fayette, Missouri

**Second Christian Church**  
 Fulton, Missouri

**St. Luke United Methodist**  
 Fulton, Missouri



**PERSPECTIVES IN BLACK:**  
GETTING TO KNOW UMC is a publication of the Legion of Black Collegians, 110 Gentry Hall, with the help of the MSA Media Center, 315 Read Hall. All inquires should be addressed to the LBC office - 110 Gentry Hall, UMC, Columbia, Missouri, 65211.

**Editor:**  
Kenneth McFarlin  
**Assistant Editor:**  
Stacey Fowler  
**Advisor:**  
Paulette Grimes  
**Staff Photographer**  
Al Nixon  
**Special Thanks To:**  
Shelia Tillman May  
Chris Williams  
Randy Hinton



---

# NOTES

University of Missouri - Columbia



010-100175418

# NOTES



**Perspectives in Black: Getting to Know UMC**  
is a UMC Legion of Black Collegians publication.  
110 Gentry Hall, Columbia, MO, 65211

**“The  
Black  
Book”**