

# MIZZOU

## WEEKLY

University of Missouri-Columbia Oct. 22, 1998

### INSIDE THE WEEKLY

Page 3: Curators will look at revising UM's non-discrimination policy

A day long series of seminars focuses on grant writing

## Bryant to step down

*Search committee to determine "nature of the position" before launching nationwide search for replacement.*

Lester Bryant announced his intention last week to step down at the end of the year as interim vice chancellor for medical sciences and chief executive officer of the MU Health System. Until last June, Bryant had served as dean of the School of Medicine since 1989.

"Lester Bryant has shown outstanding leadership in both medical education and clinical care at MU," Chancellor Richard Wallace said. "He has kept our health sciences center fiscally strong while other academic health sciences centers have struggled. He has built lasting relationships with area physicians and important affiliations with other health care providers across the state, while spearheading the development of an innovative and successful curriculum for the medical school."

Bryant also was instrumental in forming the MU Health System and bringing Capital Region Medical Center in Jefferson City into the newly created health care network.

Interim Medical School Dean Robert Churchill also will serve as interim vice chancellor for medical sciences and chief executive officer of the MU Health System effective Jan. 1, 1999, Wallace said. Churchill had served as vice dean of the School of Medicine since 1995 and chair of the Department of Radiology since 1987.

Bryant will step down as vice chancellor on Dec. 31, 1998, but will continue to work with Churchill for a few months on a consulting basis to complete specific projects.

Wallace has appointed a search committee to choose Bryant's successor. He and the committee will work with Provost Brady Deaton and the medical and nursing faculty to determine the exact nature of the position before launching a nationwide search. Recommendations from an ad hoc committee on the organization of the health sciences center appointed last June by Deaton and Wallace will be considered.

"I am pleased with the quick and comprehensive work of this advisory group and will consider its recommendations seriously as we work with medical and nursing faculty to find a leadership team that will ensure the future success of the health sciences at MU," Wallace said.

The search committee chair will be Jack Colwill, professor and former chair of family and community medicine. Members include faculty, students, administrators, alumni and members of the medical community.

Bryant was named dean of the MU School of Medicine in 1989 and chief executive officer of the MU Hospitals and Clinics in 1993. He was appointed interim vice chancellor for medical sciences and chief executive officer of the MU Health System in June 1998. Under Bryant's leadership, the School of Medicine implemented an innovative problem-based learning curriculum in 1993, which has resulted in significant improvements in student performance on the U.S. Medical Licensing Examination.

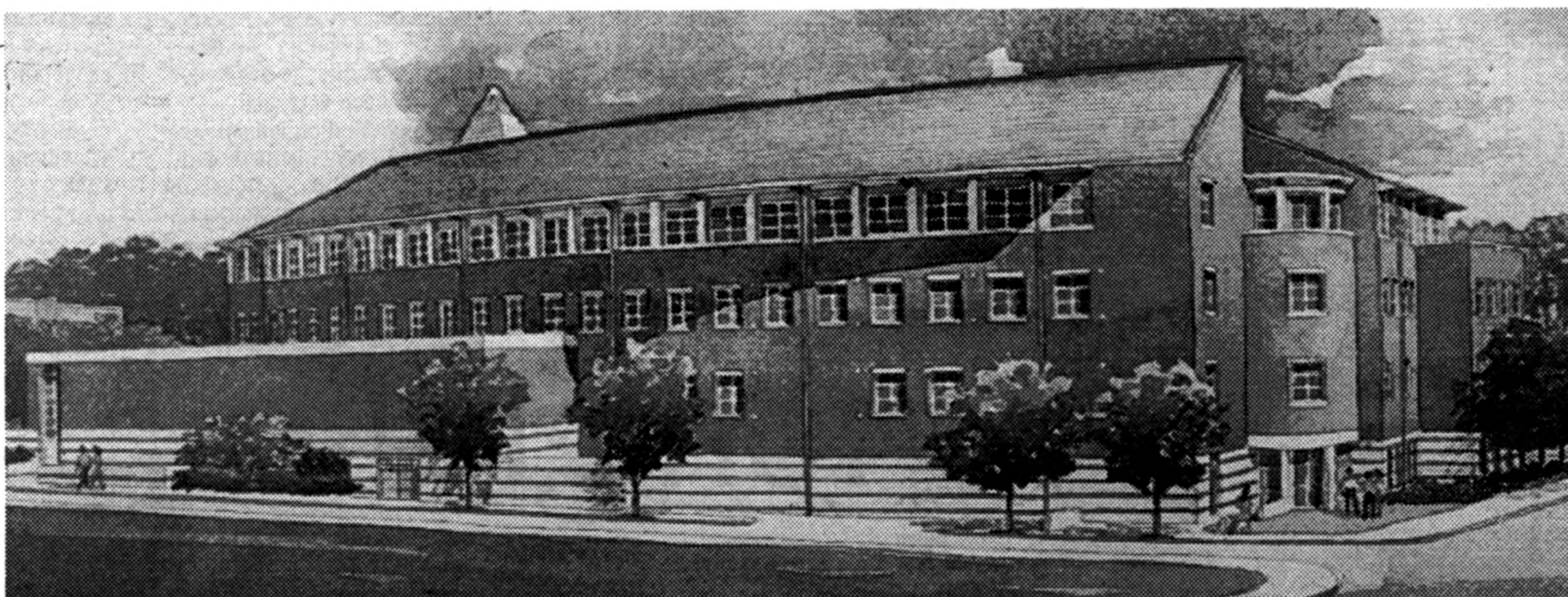
During his tenure, Bryant has led the effort to reemphasize the Health Sciences Center's original mission of providing health care to rural areas of the state. He has overseen the successful mergers of

two state-operated hospitals, Ellis Fischel Cancer Center and Missouri Rehabilitation Center, with the Health Sciences Center. Other achievements include the development of the Missouri Telemedicine Network, the federally funded Area Health Education Center and the development of the new Rusk Rehabilitation Center with the Health South Corporation.

Bryant has fostered closer working relationships with area physicians and hospitals and has facilitated affiliations with 11 hospitals and medical facilities throughout mid-Missouri. In 1997, he was instrumental in forming the MU Health System and bringing Capital Region Medical Center in Jefferson City into the newly created health care network.

His strong business acumen has enabled the Health Sciences Center to remain fiscally strong in the wake of sweeping changes in the health care industry, which have negatively impacted many of the nation's academic health centers. A new critical care addition financed and developed under his leadership will be completed in 1999 and will replace the existing intensive care units built in 1956.

Private funding for Cornell Hall, right, a new home for the College of Business and Public Administration, is one goal of the college's capital campaign. At 150,000 square feet, Cornell Hall would be twice the size of Middlebush Hall, the college's current home.



## B&PA raises \$6 million in gifts

The College of Business and Public Administration announced \$5.95 million in new gifts for the college's capital campaign at the 10th annual Herbert J. Davenport Society Banquet and Excellence through Change capital campaign celebration held Oct. 16. The four new gifts bring the capital campaign total to \$24.9 million. The campaign continues through January 1999.

"Many individuals as well as a number of corporations and foundations have been very generous in making gifts to the college during our first-ever capital campaign," said Bruce Walker, dean of the college. "The proceeds of the

capital campaign will be used to support faculty and students, academic programs and educational technology, and as a down payment on a much needed new home for B&PA."

The largest of the four gifts, a planned gift of \$5 million from an anonymous donor, will create an endowment to fund three chairs and three professorships in the college.

Mercantile Bancorporation Inc. made a gift of \$250,000 to the B&PA campaign. One of the tiered classrooms in the proposed new B&PA building will be named in honor of Mercantile Bancorporation Inc.

The remaining two gifts were from

anonymous donors, one for \$200,000 and the other for \$500,000. According to the donors' specifications, the gifts will be used to create endowments to support undergraduate and graduate scholarships in the college.

"B&PA and all its supporters can be truly proud of the capital campaign results," said Ralph Clark, campaign steering committee chair and B&PA alumnus. "Many alums and companies share our dream of a nationally recognized business school and have generously given us the resources to help that dream become reality."

B&PA's capital campaign, Excellence through Change, has far surpassed its

original \$14 million goal. This goal was set based on a feasibility study conducted by a consulting firm. The funds that have been raised beyond the original goal will allow the college to include another floor in the new building. A \$1 million endowment for periodic refurbishing and upgrades to the building also has been established, setting a standard for this type of endowment across the University system.

"We still need to raise some more private funds for the new building," Walker said. "When the necessary state funds for the facility are appropriated, I believe other supporters of the college will step forward and help us complete this historic project."

**FOCUS ON FACULTY**

Two upcoming events will be of interest to MU faculty members:

•The fall general faculty meeting will be held at 3:30 p.m. Nov. 3 in the Columns Room of the Reynolds Alumni and Visitors Center. Chancellor Richard Wallace will speak on "The State of MU." A reception will follow.

•MU's Faculty Council will sponsor an open forum to discuss proposed revisions to the UM System policy on academic grievances. Since spring, the Intercampus Faculty Council, with representatives from all four UM campuses, has been reviewing the current policy and discussing

revisions. A draft of the revised grievance policy has been circulating on campus for faculty discussion. Faculty Council now will hold an open forum at 4 p.m. Oct. 26 in S206 Memorial Union. The complete draft document, including discussion of the changes, is available at the Faculty Council website at:

[www.missouri.edu/~mufcwww/](http://www.missouri.edu/~mufcwww/)

**FEND OFF THE FLU**

The flu season is here, and now it's even easier to avoid those all-too-familiar aches and pains if you work in the central campus area. The Health Sciences Center is offering flu

immunizations in Jesse Hall from 8 to 10 a.m.

Oct. 27 and again Nov. 17. University HMO and point-of-service plan

members who have a University physician as their primary care doctor are eligible to receive free flu shots; they should bring their insurance card for identification.

Members of high-risk groups, such as individuals age 65 and older, are eligible for the free shots as well. Flu immunizations also are available at the Health Information

Center in Columbia Mall from 9 a.m. to noon and from 3 to 6 p.m. Wednesdays and Thursdays through Nov. 25. With questions, call 882-6565

**GREENING OF MU**

The \$5.2 million White Campus greenhouse construction project got under way this week. Seven existing greenhouses south of Stanley and Curtis halls and north of Tucker Hall will be demolished to prepare the site for construction of a new greenhouse complex.

The construction area will be fenced, and the east-west drive directly north of Tucker Hall will be closed to accommodate the

construction. Access to buildings in the area will be maintained by alternate routes. Signs will be posted to direct pedestrians and vehicle traffic while the work is under way. The project is scheduled to be completed in October 1999.

During the project, underground utility lines will be installed from an existing manhole east of Ellis Library to a new manhole west of the Physics Building. Contractors anticipate the street crossing work to begin sometime in mid-December. During that period, Hitt Street will be reduced to a single lane for approximately two weeks.

**Parking & Transportation Services**

Turner Avenue Garage  
Level 2  
882-4568

Lot CG15 is now restricted 24 hours, 7 days per week. Illegally parked vehicles may be ticketed and towed.

**Procurement and Materials Management** has moved to 1105 Carrie Francke Drive. Department personnel doing business with Procurement may park their vehicles in RP9 with any Y99 campus parking permit.

**From the heart**

When it comes to doing good for others through the United Way, the Voluntary Action Center is the know-it-all of all United Way agencies.

For 30 years, the non-profit agency has provided information and referral for volunteer opportunities in Boone County. The Voluntary Action Center has been a United Way agency since 1972.

Cindy Mustard, director of the Voluntary Action Center, says the funding assistance provided by the United Way amounts to about 50 percent of the center's budget and is applied to everything from operating costs to programming. "We wouldn't be able to have any of our programs if it weren't for the United Way," Mustard says.

One of the agency's biggest programs is the annual "Adopt a Family" at the Christmas season. Families in need sign up for the program each year, and Columbia businesses and organizations "adopt" a family and provide them with Christmas gifts and a meal. Last year, the agency had about 1,100 families sign up for the program. Many University

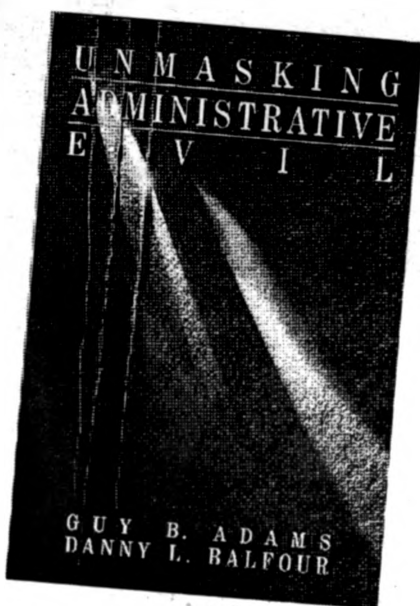
departments volunteer by adopting families, Mustard says.

One University department that has participated in the "Adopt a Family" program for the past several years is the College of Engineering dean's office. Last year, the office even adopted two families, says Janet Brokken, the office's administrative assistant.

"It's really hard to put into words," Brokken says about her feelings of helping those in need at Christmas. "Our office pulls together to help those who are less fortunate. It's wonderful."

The Voluntary Action Center is also an unlimited resource for volunteer opportunities. Mustard says those opportunities can be found in the agency's *Helping Hand* book, which lists about 145 agencies in Boone County that are in need of volunteer assistance, or by calling 874-2273.

As of Oct. 16, the University United Way campaign had raised a total of \$264,975, or 72 percent of the \$370,000 goal.



**Tonight!**  
Thursday, October 22,  
5-6 p.m.

Join us as Guy Adams signs  
*Unmasking  
Administrative Evil*

**University  
Bookstore**

Main Level Brady Commons  
882-7611 TDD: 882-3985  
[www.bookstores.missouri.edu](http://www.bookstores.missouri.edu)  
Open: Mon-Thurs: 8-7  
Fri: 8-5, Sat: 10-5

A University owned and operated bookstore.

FOCUS  
ON  
FACULTY

MU Faculty, Staff and Retirees save 10% on almost everything we sell. Ask for your Faculty/Staff discount.

**MIZZOU**  
WEEKLY

Volume 20 Number 9

A publication for University of Missouri-Columbia faculty and staff, published every Thursday during the academic year and twice a month during the summer by Publications and Alumni Communication, a department of University Affairs, 407 Reynolds Alumni and Visitor Center, 882-7357. News deadline is noon Thursday the week before publication. Annual subscriptions are available for \$25.

Editor . . . . . John Beahler  
Graphic editor . . . . . Sue Richardson  
Director of advertising . . . . . Tanya Stitt  
Photographers . . . . . Rob Hill, Nancy O'Connor  
Assistants . . . . . Yoon Cho, Jennifer Hartmann, Emily Smith



Printed with soy ink on recycled newsprint containing 90 percent to 100 percent post-consumer waste.

# UM System increases federal research funds

At its Oct. 16 meeting in Columbia, the UM System Board of Curators heard updates on the University's endowment and retirement funds, and a report that showed federal research funding for individual sponsored projects at the University has doubled in less than a year.

Theodore Beckett, president of the Board of Curators, also announced that the board's executive committee would look into revising the University's non-discrimination policy. Student and faculty members have asked the board to add sexual orientation to the policy's list of protected groups. Curator Paul Combs chairs the executive committee. Other members are Beckett, Malaika Horne and Hugh E. Stephenson, Jr.

UM Vice President for Academic Affairs Steve Lehmkuhle reported on fall 1998 freshmen enrollment. Lehmkuhle said that across the UM System more students have completed college preparatory courses and are thus better prepared to apply for admission to a UM campus. He also noted that the number of exemptions granted from freshmen admissions requirements dropped on every campus compared to fall 1997. He said 93 percent of the students enrolled at UM had completed four years of high

school mathematics and 97 percent had completed two years of a foreign language.

The board heard a report from University Controller Nikki Krawitz on year-end financial status for fiscal year 1997-1998. Krawitz said that endowment and similar funds increased by \$98 million — \$4 million from the state's endowed chairs program, \$31 million from gifts and \$63 million from income and appreciation on the endowment funds. She also reported the retirement fund grew by \$282 million.

University President Manuel Pacheco reported to the board that efforts to increase federal research initiatives at UM have resulted in more than double the funding for individual sponsored projects in less than a year. He said the University of Missouri's federal initiatives for the 1998 fiscal year will total more than \$28 million in individual sponsored projects, compared to \$11.5 million last year.

Pacheco also reported on work being done to launch a continuous strategic planning process. "This will allow us to adjust constantly to changes in the environment and will require us continually to assess our progress and shortcomings according to measurable benchmarks," he said.

# Focus on grants

MU faculty will have an opportunity to sharpen up their grant-writing skills at a daylong series of grantmanship seminars Oct. 29.

The morning session features Stephen Russell, a nationally recognized grant writing consultant with Grant Writers' Seminars and Workshops. The session is aimed at a general audience of researchers from across disciplines, and runs from 8 a.m.-noon in E125 Veterinary Medicine Building.

The programs, sponsored by the Office of Research, are open to all faculty, postdoctoral fellows and graduate students. The following two-hour sessions feature panels of experienced MU researchers and are structured to encourage discussion and collaboration across departments.

Registration is required for all the sessions; call 884-6438, or e-mail: requests@research.missouri.edu

■ Basic and applied mathematics from 1-3 p.m. in 85 Gannett Hall. The seminar will look at both federal and corporate funders in fields ranging from economics to statistics and from programming to accounting, finance and business management.

■ Physical sciences and engineering from 3-5 p.m. in Ketcham Auditorium in the Engineering Building East. The seminar features MU scientists experienced with the National Science Foundation, NASA and corporate funders for research in fields ranging from chemistry and physics to environmental design and computer applications.

■ Arts and humanities from 1-3 p.m. in 112 Hulston Hall. The seminar will

discuss research and creative work in fields ranging from drama to painting and history to mass media, and experiences with the National Endowment for the Humanities and with private and corporate funders.

■ Human interactions from 3-5 p.m. 112 Hulston Hall. The session will focus on research in areas ranging from psychology to anthropology and public policy to organizational dynamics.

■ Neurological and cognitive sciences from 1-3 p.m. in S455 Sinclair School of Nursing. The seminar will discuss funding for projects in such areas as counseling, aging, human development and artificial intelligence.

■ Basic and applied biological sciences from 1-3 p.m. in 125E Veterinary Medicine. The seminar will discuss research funding from the U.S. Department of Agriculture, the National Institutes of Health and other private and public organizations in veterinary medicine, nutrition and genetics. The first hour focuses on animal science and the second on plant science.

■ Basic and applied biomedical research from 3-5 p.m. in Acuff Auditorium in the Medical Sciences Building. This seminar covers fields ranging from disease prevention to gene sequencing, health care delivery and pharmacology. Experiences with the National Institute for Nursing Research, the National Institutes of Health, the USDA, the Robert Wood Johnson Foundation and corporate funders will be shared.

Only 1 out of 3 people prefer the Egg McMuffin® to the CROISSAN'WICH®. Maybe the other 2 can talk some sense into him.

Offer good before 10 a.m.



\$1.99

**BRADY**  
FOOD COURT

Mon. - Thurs. 7 a.m. - Midnight  
Fri. 7 a.m. - 6 p.m.  
Sat. 9 a.m. - 4 p.m.  
Sun. Noon - Midnight

**EZ CHARGE UPfront**  
PAY WITH YOUR MIZZOU I.D.

**The new CROISSAN'WICH® Value Meal.**

A CROISSAN'WICH® is filled with sausage, egg and cheese. It's preferred 2-to-1 over the Egg McMuffin®. With golden hash browns and a cup of fresh coffee. Just \$1.99 every day at Brady Food Court.

**BURGER KING**

Get your breakfast's worth.™

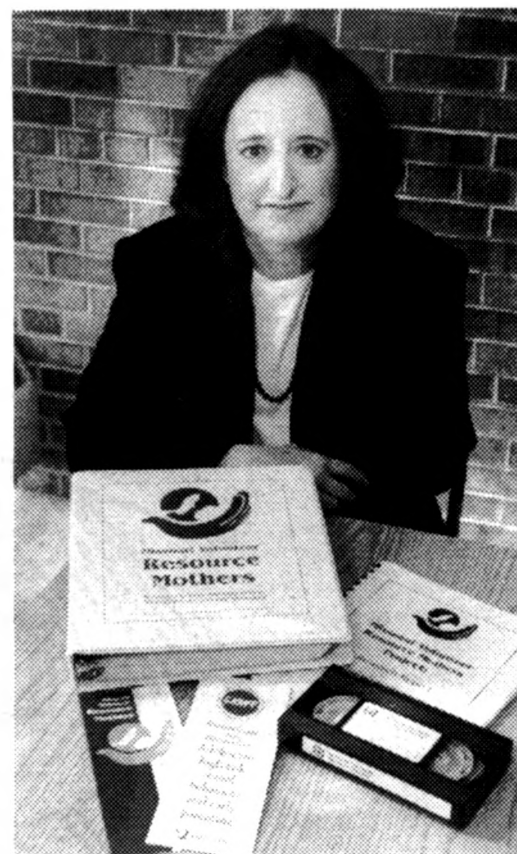
## MU Extension

Lynn Blinn Pike,  
Associate professor  
& State specialist

**Reducing the risk.** While others study the 48 percent of teens who are sexually active, Lynn Pike researches an often forgotten group—the 52 percent who aren't having sex.

This unique approach sets MU's Center on Adolescent Sexuality, Pregnancy and Parenting apart. Lynn and her team are following more than 1,000 Missouri teens for three years to see what effect an innovative curriculum has on high-risk sexual behaviors.

Promoting responsible behavior for youth is just one way MU Extension takes the lead nationally to address serious societal issues—and make the future better for all of us...



Human Environmental Sciences Extension  
<http://outreach.missouri.edu/hes/>

**The Power of Lifelong Learning**

# CALENDAR

Send calendar items by Campus Mail to  
Mizzou Weekly Calendar, 407 Reynolds Center,  
by noon Thursday the week before publication.  
Events are free and open to the public unless otherwise noted.

## Concerts and Plays

### Thursday, October 22

**STUDENT RECITAL:** A trombone recital will be presented at 3 p.m. in Whitmore Recital Hall.

**THEATER SERIES:** *Guys and Dolls* will be performed at 8 p.m. tonight and Oct. 23-24, and at 2 p.m. Oct. 25 in Rhynsburger Theater. For ticket information, call 882-PLAY.

### Friday, October 23

**JAZZ SERIES:** "The Jazz Messengers: The Legacy of Art Blakey" will be presented at 8 p.m. in Launer Auditorium at Columbia College. For tickets, call 882-4640.

### Sunday, October 25

**GUEST RECITAL:** Darren Dyke will perform on steel drums at 3:30 p.m. in Whitmore Recital Hall.

### Monday, October 26

**JUNIOR RECITAL:** Shen Wen will perform on piano at 8:30 p.m. in Whitmore Recital Hall.

### Tuesday, October 27

**STUDENT RECITALS:** A string recital will

be performed at 3 p.m. and Joe Rackers will perform on piano at 8:30 p.m. in Whitmore Recital Hall.

## Conferences

### Friday, October 23

**ACADEMIC WRITING WORKSHOP:** Mary Kay Blakely, associate professor of journalism, will present "Write Smart, Write Pretty: Writing Academic Research for the Mainstream Press" from 1-3:30 p.m. in 303 Switzler Hall. Space is limited and registration is required. To register, call 882-2703.

### Saturday, October 24

**DISABILITY CONFERENCE:** "Including People with Disabilities in Community", a two-day conference including lectures from many different educators, including a keynote address by inclusion specialist Norman Kunc and MU faculty. The conference will be held from 9 a.m.-5 p.m. today and continue from 8:30 a.m.-12:15 p.m. tomorrow in Allen Auditorium in the Arts and Science Building. For cost and registration, call Betty Barfield at 882-3379.

## Courses

### Saturday, October 24

**RAKU CLAY CLASS:** The MSA/GPC Craft Studio is offering a course in raku clay for those who have experience working with clay. Class begins today from 9:15 a.m.-12:15 p.m.; for the other times, dates, and registration information, call 882-2889.

### Tuesday, October 27

**CRAFT STUDIO COURSE:** "Journal Making" will be held from 4-6 p.m. at the MSA/GPC Craft Studio. Cost is \$15, call 882-6621 to register.

### Wednesday, October 28

**HAZARDOUS MATERIALS COURSE:** "Hazardous Materials Awareness" will be offered from 8:30-10:30 a.m. in the Environmental Health and Safety classroom in the Research Park Building. The course also will be offered Nov. 10 and Dec. 30. Registration is required; call Rebecca Bergfield at 882-7018.

## Exhibits

**MUSEUM OF ANTHROPOLOGY:** The museum's exhibits focus on Native American cultures and the history and prehistory of Missouri. The museum, located at 100 Swallow Hall, is open 9 a.m.-4 p.m. Monday through Friday.

### MUSEUM OF ART AND

### ARCHAEOLOGY:

Special Exhibits:  
• "Jupiter's Loves and His Children" is on display through Dec. 20  
• "Wrapped Creatures: Animal Mummies from Egypt" is on display through next summer. The museum, located in Pickard Hall, is open from 9 a.m.-5 p.m. Tuesday-Friday, 6-9 p.m. Thursday and noon-5 p.m. Saturday and Sunday.

### STATE HISTORICAL SOCIETY OF MISSOURI:

• "A Centennial Salute to Thomas Hart Benton" will be on display 8:15 a.m.-4:15 p.m. Monday-Friday through Dec. 31.  
• "Decades: 1898 to 1968, Editorial Cartoons" is on display in the east-west corridor. The corridors are open 8 a.m.-4:30 p.m. Monday-Friday, and 9 a.m.-4:30 p.m. Saturday.

**BINGHAM GALLERY:** The annual graduate exhibition is on display through October 30. The gallery, located in A125 Fine Arts Building, is open from 10 a.m.-4 p.m. Monday through Friday.

**BRADY GALLERY:** The Group Fibers Exhibition will be on display through Oct. 29. The gallery, located in 203 Brady Commons is open from 10 a.m.-5 p.m. Monday through Friday.

**ROGERS GALLERY:** An exhibit of wilderness and outdoor photography by

Matthew Schofield titled "Luminous Phantoms" will be on display through Oct. 31. The gallery, located in Stanley Hall is open 9 a.m.-noon and 1-4 p.m. weekdays.

## Films

### Friday, October 23

**MSA/GPC FILM:** *The X-Files: Fight the Future* will be shown at 7 and 9:30 p.m. tonight and tomorrow in Memorial Union Auditorium. Cost is \$2.50, \$2 in advance.

### Saturday, October 24

**WOMEN STUDIES FILMS:** Two films by anthropologist Barbara Meyerhoff, *Number Our Days* and *In Her Own Time*, will be shown beginning at 7:30 p.m. in 106 Pickard Hall.

### Tuesday, October 27

**MSA/GPC FILM:** *Friday the 13th* will be shown at 8 p.m. in Memorial Union Auditorium. Free with MU ID.

### Thursday, October 29

**JAZZ SERIES FILMS:** *L.A. All-Stars and Art Blakey: The Jazz Messenger* will be shown at 7 p.m. in Daniel Boone Regional Library.

## Lectures

### Thursday, October 22

**INTERNATIONAL AFFAIRS SEMINAR:** Nelleke Bak from the University of Western Cape in South Africa, will present "South Africa: The Current Crisis in Education" from noon-1 p.m. in S203 Memorial Union. A brown-bag lunch begins at 11:30 a.m.

**GEOLOGY SEMINAR:** Bruce Fouke from the University of Illinois at Urbana-Champaign, will present "Yellowstone Hot Spring Travertines: A Template for Interpreting the History of Life on Early Earth (and Mars?)" at 3 p.m. in 103 Geological Sciences Building.

**CHEMICAL ENGINEERING LECTURE:** Robert Roberts, professor emeritus of chemical engineering at the University of Akron, will present "A Chemical Engineer's View of the World" at 3:30 p.m. in Ketcham Auditorium.

**NUTRITION RESEARCH SEMINAR:** Martin Fettman, Department of Pathology, Colorado State University, will present "Nutritional Effects on Phenobarbital Metabolism" at 4 p.m. in 209 Gwynn.

**ARTS & SCIENCE LECTURE:** Columnist, humorist and Kansas City native Calvin Trillin will present "Calvin Trillin's America" at 8 p.m. in Jesse Auditorium.

### Friday, October 23

**CHEMISTRY COLLOQUIUM:** Eric Chronister from the University of California-Riverside, will present

## Treat yourself to a computing class

There's something a little magical about computers, and IAT Services training classes can show you some tricks to make them easier to use. Classes are non-credit, free-of-charge, and open to all MU faculty, staff, and students. See the URL below for a complete course list, prerequisites, and current course calendar. Courses being offered this week:

Word  
Excel  
Adv Excel  
Inter Excel  
Homepage  
Intro to Access  
Advanced Word  
Intro to Outlook 98  
Intermediate Outlook 98  
Intermediate and Advanced Access



iat  
services

Registration: 573/882-6006

www.missouri.edu/~iatstg/

PAPER MATE

DYNAGRIP™ Ball Pen RT10



Stk #0328  
\$8.89/Dozen

Retractable  
Ball Pen  
with  
PATENTED  
CUSHION  
GRIP  
Non-Refillable  
BLACK ink  
Medium Point

"Dynamics in Molecular Solids Under High Pressure" at 4 p.m. in 114 Physics.

**ECOLOGY SEMINAR:** Bill Wagner from the University of Nebraska will present "Selection on Male Calling Behavior and Female Preferences in a Field Cricket" at 4 p.m. in 106 LeFevre Hall.

**MUSEUM LECTURE:** Mary Sheriff from the University of North Carolina will present "Reading Jupiter Otherwise: or Ovid's Women in 18th-Century Art" at 4 p.m. in the Museum of Art and Archaeology.

**MARGARET MANGEL LECTURE:** James Levine, director of the Fatherhood Project at the Families and Work Institute in New York and a contributing editor to *Child* magazine, will present "Daddy Strategy for the 21st Century: Why We Must—How We Can—Get Men Involved in the Lives of Children" at 2 p.m. the Memorial Union's Stotler Lounge.

**CREATIVE WRITING LECTURE:** Poet and journalist Katha Pollitt, author of *Reasonable Creatures: Essays on Women and Feminism*, will present "Subject to Debate" at 4 p.m. in 103 Tate Hall.

**Saturday, October 24**

**WOMEN STUDIES SYMPOSIUM:** A symposium titled "Our Texts, Ourselves: Feminist Research, Writing and Audiences" will present the following speakers: Judith Wittner, associate professor of sociology at Loyola University, will present "Rounds of Collaboration" from 10-11 a.m.; Ellen Lewin, associate professor of women's studies and anthropology at the University of Iowa, will present "The Insider-Outsider Debates in Feminist Anthropology: A True Story" at 11:15 a.m.; and Michal McCall, professor and chair of sociology at MacAlester College, will present "Is There a Feminist Research Method?" at 1:30 p.m. A panel discussion follows from 2:45-4 p.m. All events will be in S203 Memorial Union.

**Monday, October 26**

**JOURNALISM SEMINAR:** Ann Brill, assistant professor of journalism, will present "New Media, Old Values: What Online Journalists Say Is Important To

Them" at noon in 202 Lee Hills Hall.

**CARDIOVASCULAR RESEARCH SEMINAR:** Stephen Ballard, associate professor of physiology, will present "Ion Transport, Submucosal Glands, and Cystic Fibrosis" at noon in the Dalton Cardiovascular Research Center.

**SOIL & WATER RESOURCES SEMINAR:** Kenneth Pigg, associate professor of rural sociology, will present "Social Issues in Suburban Land Management" from 4 p.m. in the Conservation Auditorium at Anheuser-Busch Natural Resources Building.

**NUCLEAR ENGINEERING SEMINAR:** Herb Tellem, professor of political science, will present "International Politics of Nuclear Proliferation" at 4 p.m. in E1419 Engineering Building East.

**Tuesday, October 27**

**SOCIAL SCIENCES SEMINAR:** Mark Drabenstott, vice president and economist for the Federal Reserve Bank of Kansas City, will present "Five Forces Shaping the Land-Grant Future" from 10:30 a.m.-noon in S203 Memorial Union.

**CIVIL ENGINEERING SEMINAR:** David Hammer, associate professor of soil science, will present "The Quincy Levee Break in 1993 — Geomorphic and Hydrologic Influences on Constructed Levees" at noon in Ketcham Auditorium in the Engineering Building East.

**BIOLOGICAL SCIENCES SEMINAR:** David Soll from the University of Iowa will present "The Regulation of Phase-Specific Genes During High Frequency Phenotypic Switching in the Human Pathogen *Candida Albicans*" at 3:30 p.m. in 18 Tucker Hall.

**STATISTICS LECTURE:** Peter Zue-Kun Song from the Department of Mathematics and Statistics at York University will present "State Space Models for Longitudinal Data" from 3:30-5 p.m. in 204 General Classroom Building.

**GEOGRAPHY SERIES:** Jenny Dickherber will present "Seeing Spain as a Geography Undergraduate" at 4 p.m. in Stewart Hall.

**Wednesday, October 28**

**MIDDAY GALLERY EVENT:** Haskell

Hinnant, professor of English, and Ted Tarkow, associate dean of arts and science, will present "Jupiter's Loves and His Children: The Myths, Versions Old and New" at 12:15 p.m. in the Museum of Art and Archaeology.

**Thursday, October 29**

**INTERNATIONAL AFFAIRS SEMINAR:** Bob Beasley, a retired CEO of the International Cooperative Alliance, and Earl Lubensky, a retired U.S. Foreign Service officer, will present "The Making of US Foreign Policy" at noon in S207 Memorial Union. A brown-bag lunch begins at 11:30 a.m.

**NUTRITION RESEARCH SEMINAR:** Ralph Giannella from the University of Cincinnati College of Medicine will present "Guanylate Cyclase-C Receptor for STA/guanylin Peptides: Consequences of Ablation of the GC-C Gene" at 4 p.m. in M328 Medical Sciences Building.

**Friday, October 30**

**CHEMISTRY COLLOQUIUM:** Doug Doreff from the University of Delaware will present "Principles of Semiconductor Surface Chemistry for First-Principles Calculations" at 4 p.m. in 114 Physics Building.

**Meetings**

**Thursday, October 22**

**STAFF ADVISORY COUNCIL:** Group meets at 1:15 p.m. in S206 Memorial Union.  
**FACULTY COUNCIL:** The council will meet at 3:40 p.m. in S203 Memorial Union.

**Saturday, October 24**

**HISTORICAL SOCIETY MEETING:** The State Historical Society of Missouri will hold its annual meeting throughout the day. James Robertson, professor of history at Virginia State University, will give the keynote speech at noon in the Reynolds Alumni Center ballroom. For cost and registration information, call 882-7083.

**Tuesday, October 27**

**GRADUATE FACULTY SENATE:** Group will meet at 3:45 p.m. in S203 Memorial Union.

**Special Events**

**Thursday, October 22**

**FACULTY BOOK SIGNING:** Guy Adams, professor of public administration, will sign his book *Unmasking Administrative Evil* from 5-6 p.m. at the University Bookstore.

**Saturday, October 24**

**WOMEN HELPING WOMEN:** MU's Women's Center joins with the Central Missouri Council on Aging to assist elderly women in the community with autumn clean-up and yard projects from 10 a.m.-2 p.m. With questions, and to register, call 882-6621.

**SHRINE CIRCUS:** The Royal Hanneford Circus will perform at 2 and 7:30 p.m. today and at 1 and 5 p.m. tomorrow at the Hearnes Center. For ticket information, call (800) CAT-PAWS.

**Sunday, October 25**

**BRIDAL SHOW:** Everything you need to plan your wedding will be on display beginning at noon in the Hearnes Center.

**Training triumphs**

As technology continues to impact the workplace and provide new ways in which workers can learn, business leaders are bombarded with choices for the most cost-efficient and effective methods to train their employees.

Two MU researchers are helping them sort out training in the information age. Their study says that the trend toward other learning methods should not phase out traditional face-to-face sales training in the classroom.

"A lot of people feel that face-to-face training is a waste of money," said Steve Graham, associate professor of education.

As technology has influenced the development of other types of training, there has been a shift toward self-directed learning or online courses that individuals can work through in their spare time.

There is a growing belief that if training is done in the classroom, it is not effective. The results of this study suggest otherwise — that classroom training can increase performance.

In a study published recently in *Performance Improvement Quarterly*, Graham and John Wedman, associate professor and director of the School of Information Science and Learning Technologies, surveyed 125 account executives three to four months after they had received training.

The study concludes that "in certain contexts there is a return on investment in classroom training," said Wedman. If businesses abandon face-to-face training, their employees will miss out on the socialization and interpersonal networking that takes place in the classroom, he said.

"While it's possible, it's harder to establish relationships with people through computers than in a classroom setting."

SPECIAL ASSISTANCE PROVIDED BY  
Vice Provost Office of  
Minority Affairs &  
Faculty Development

NATIONAL PASTIMES  
PRODUCTIONS

Proudly  
Presents

1998-1999 "We Always Swing" Jazz Series

## The Jazz Messengers: The Legacy of Art Blakey

**Benny Golson,**  
*Saxophone &  
Musical Director ('58)*

**Curtis Fuller,**  
*Trombone ('62)*

**Randy Brecker,**  
*Trumpet ('75)*

**Mulgrew Miller,**  
*Piano ('81)*

**Buster Williams,**  
*Bass ('74)*

**Carl Allen, Drums**

**Friday, October 23 • 8 p.m.**  
**TOMORROW NIGHT**

LAUNER AUDITORIUM,  
COLUMBIA COLLEGE

\$18 Public/\$16 Student

"The Jazz Messengers...stir the  
hard-bop fires." — L.A. Times

All Jazz Series Events  
Now On Sale  
LAST CHANCE  
TO BUY SEASON TICKETS  
& SAVE!  
Public \$80 • Students \$70

**TICKETS:**

Charge: (573) 884-7297  
Info: (573) 882-4640

**OUTLETS:** All MetroTix Locations, Streetside Records, MSA Brady Commons Box Office - MU, Blue Note, Hearnes Center, Schnucks

Student Discount & Charges At Brady Commons Box Office Only

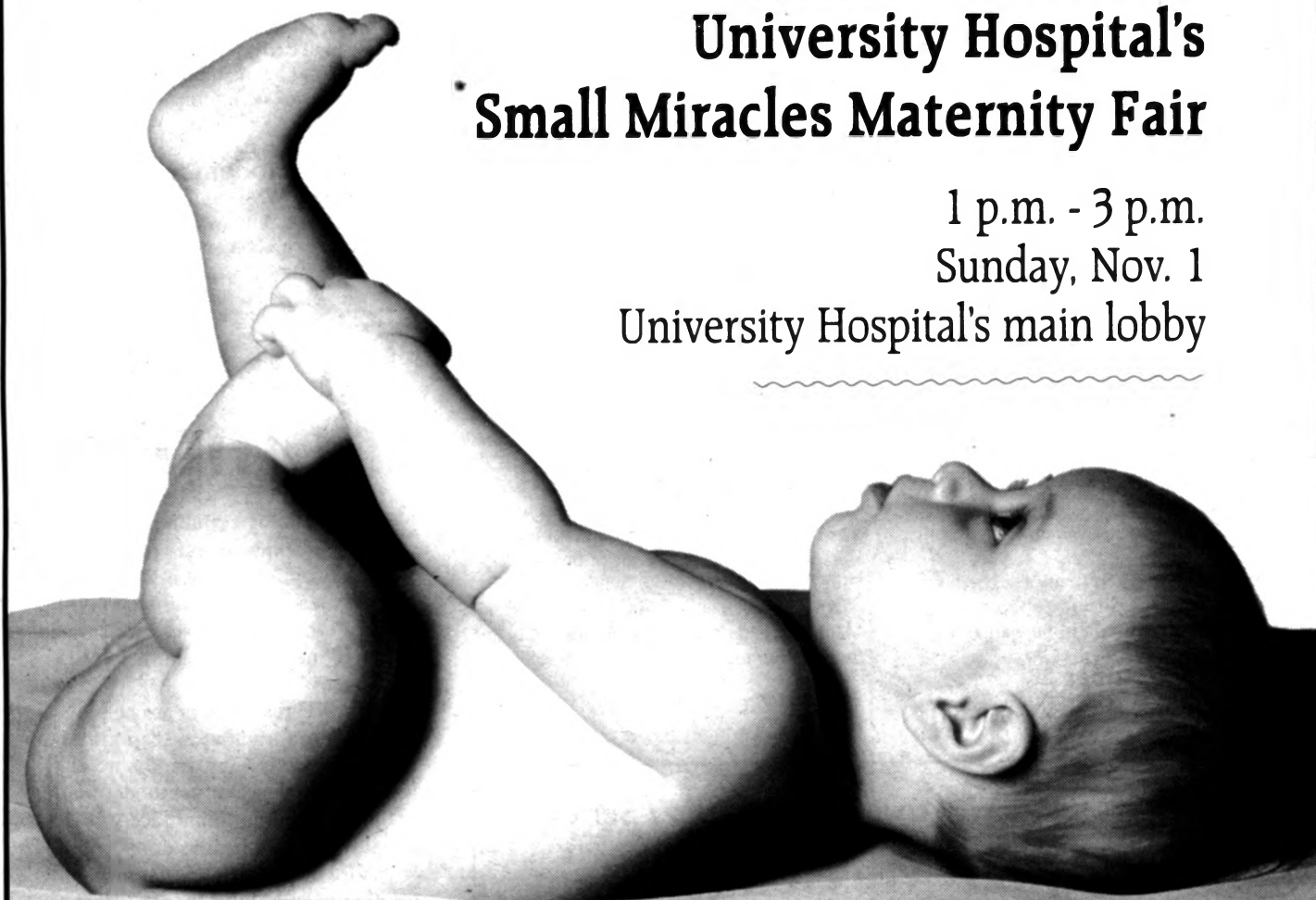
Jazz On Film: Art Blakey: The Jazz Messenger & L.A. All-Stars October 29 • 7 p.m. • FREE • Daniel Boone Regional Library

# Little fingers. Little toes. Big questions.

## University Hospital's Small Miracles Maternity Fair

1 p.m. - 3 p.m.  
Sunday, Nov. 1

University Hospital's main lobby



You probably have a lot of questions if you're a new parent, already expecting or thinking about starting a family. And University Hospital's Maternity Fair is just the place to find the answers. This free event features:

**Educational booths:** Covering a wide variety of topics from pre-pregnancy fitness to breast-feeding.

**Activities and displays:** A fashion show, maternity unit tours, free refreshments, contests and a JCPenney mini-store.

### Mini-seminars presented by University Physicians:

- **1:30** - *Pain control during labor and birth*, Dr. Nila Gupta, Anesthesiology and Obstetrics.
- **2:30** - *What to expect during pregnancy, labor and delivery*, Dr. Jacqueline Grant, Obstetrics and Gynecology.

**Free gifts:** Gifts from University Hospital include a tippy cup and pregnancy test. Plus, you can register to win one of many prizes, including a savings bond, child car seat and baby layette.

### Grand prize from JCPenney:

Register to win a \$800 nursery from JCPenney, including a crib with mattress, dresser and rocker.

Free parking is available in the visitor's garage, located on the east side of University Hospital.

**Please call University Hospital's Health Information Center at 882-6565 for more information.**

## Mending fences

*Do courtroom dramas force us to re-examine our opinions?*

**A**sk yourself what a courtroom is like. Where did you get that information? Was it from television? Then ask yourself if watching a courtroom drama has ever made you question your opinion on a current issue. In a new book, *Prime Time Law: Fictional Television as Legal Narrative*, 18 experts examine such shows as *Perry Mason*, *L.A. Law* and *Ally McBeal* to find out how lawyers are portrayed as they settle disputes over societal issues and how their depiction affects us as viewers.

Doug Abrams, associate professor of law, considered "one of the country's leading scholars," by Carolina Academic Press of Durham, N.C., the book's publisher, wrote the chapter focusing on *Picket Fences*, the popular Emmy-award-winning drama that ran on CBS from 1992 to 1996.

The program depicted trials focusing on such vexing issues as school desegregation, separation of church and state, and drugs and violence in the public schools. Family issues such as surrogate parenthood, child abuse, children's right to divorce their parents and parental rights in custody battles against non-parent relatives also were explored.

Abrams believes that *Picket Fences* may not have changed our minds about these controversial topics, but watching it certainly made us think about the other side of the issue. "Given Americans' passion for so many of the issues the show tackled, many viewers doubtlessly began the hour with strong opinions and perhaps with their minds made up," said Abrams. "The lawyers' eloquence challenged us to pause and think, perhaps even to re-evaluate our opinions, but at least to grant the contrary position a respectful hearing."

Collectively, *Prime Time Law* references more than 350 shows dealing with the law profession, mostly through courtroom drama situations. Since most of us are never involved in an actual lawsuit or experience real courtroom drama, we gain much of our information about lawyers and what they do from watching these shows, said Robert M. Jarvis, *Prime Time Law*'s editor, in the forward of the book. "The essays shed real light on the intricate and subtle interactions between popular notions of the legal system and legal television."

"For four years *Picket Fences* demonstrated that a courtroom drama series can assume a meaningful place in the public discourse, reaching citizens whose knowledge of the law comes primarily from the media rather than from judicial opinions, statutory codes or the primary sources," wrote Abrams.

"New social issues will inevitably emerge, as will new perspectives on existing issues. If at least some quality courtroom dramas follow the example set by *Picket Fences*, their creative treatment of profound social issues will continue fashioning a worthwhile chapter in the story of television lawyers and their effect on American life."



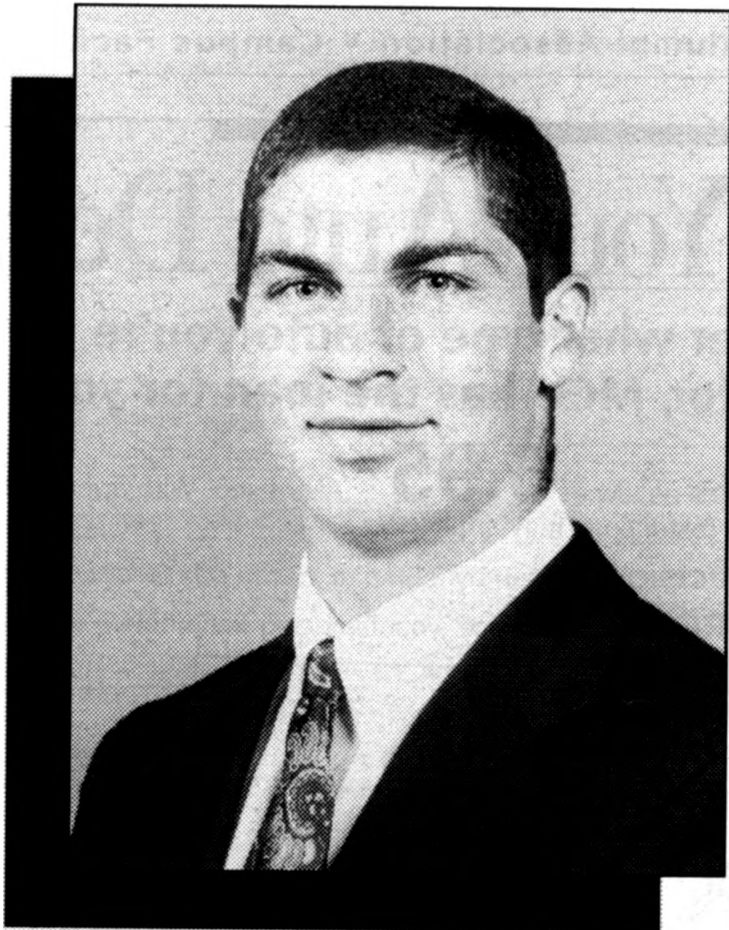
JCPenney



# Ellis Library Copy Service

# Scholar-Athlete of the Week

All Scholar-Athletes have a cumulative GPA of 3.0 or higher.



## Darin File

*sport* Track  
*major* Marketing and Management  
*special honors* Collegiate All-American, MU School Record Holder, Big 12 Champion, Fifth Place at NCAA Championships

What have you learned about sportsmanship while participating in athletics at MU?  
*"Sportsmanship is the defining characteristic of a great athlete. Without it, one will often not be respected by his peers."*

Whom do you admire the most, and why?

*"My parents. They've taught me the difference between right and wrong and have supported every step I've taken."*

What has been your favorite course at Mizzou so far, and why?

*"Health and Exercise 65—it was an interesting class that dealt with the health problems society has today."*

**75¢ Full-Color Copies**  
 when you have five or more full-color copies made,  
 8.5"x11" copies only.

**Ellis Library Copy Service**  
*Your full-color copy center.*

115 Ellis Library Columbia, MO 65201-5149 Ph. 882-7262 Fx. 884-5004  
<http://copy-service.ps.missouri.edu>

Mon. thru Thurs. 7:30am to midnight Fri. 7:30am to 11pm Sat. 9am to 9pm Sun. noon to midnight

# Classifieds

## SERVICES

Professional editing. Ph.D. in English with twenty years college teaching, experienced in editing, will edit books, proposals, dissertations, articles, major papers or presentations. Phone 446-0959 during normal office hours.

You're never too young to think about retirement. For information about retirement planning call Russell at (573) 696-2535.

One-on-one computer training at your home or office in Windows, Word, Excel and Internet. Experienced instructor. Reasonable rates. Call Pam evenings: 445-2128. "I'm a teacher, not a techie!"

Lake Ozark resort, 10 mile marker, family fun, fishing, boating, indoor

pool/spa, fireplaces, housekeeping cabins, A/C, TV, boat rentals, 1000 ft. lake frontage, DOGWOOD ACRES RESORT. 1-800-841-1896.

## SPECIAL EVENTS

A Marriage Encounter Weekend is coming to Columbia, Missouri, november 13-15, 1998. For further information call Rich or Carol at 657-9685.

The Classified Advertising Section is open to faculty and staff members, and retirees.

**A home phone number is required in all ads. Campus phone numbers will not be printed. No refunds will be given for cancelled ads. Ads must be typed.**

**Rates:** 30-word maximum \$7.50.

**Deadline:** Noon Thursday of week before publication.

**Mizzou Weekly Classifieds:** Make your check payable to University of Missouri and send to Mizzou Weekly, 407 Reynolds Alumni Center, Columbia, Mo. 65211. Attention: Tanya Stitt.

# Respect. Tradition. The Quad.



MU Alumni Association • Campus Facilities

# Get Great Mileage On Your Auto Deal



No matter what type of auto you're looking for, MCU has the loan for you!

- **LOW Rates** as low as **6.95%** APR fixed. With approved credit, some restrictions may apply
- **QUICK Decision** Apps in by 2:00 p.m. *Same Day Decision*
- **PRE APPROVED Loan** get your financing done before you shop

See your credit union  
**FIRST** and drive home a  
better bargain!



These folks are the MCU Loan Department Staff that can help you with your loan needs. *Let them help you!*



**MIZZOU  
CREDIT  
UNION®**

First and Broadway • P.O. Box 1795 • Columbia, MO 65205-1795 • [www.mizzoucu.org](http://www.mizzoucu.org)  
Phone: (573) 874-1477 (800) 451-1477 • FAX: (573) 874-1300 • TTY-TDD (573) 817-5445

Your Accounts Federally Insured By



Faculty, Staff, Retirees, Students, Alumni & families are eligible to join. Call for membership information today!

**Remember, your credit union ALWAYS has LOW rates on loans!**

# MIZZOU

WEEKLY

University of Missouri-Columbia  
Publications and Alumni Communication  
407 Reynolds Alumni and Visitor Center  
Columbia, MO 65211

University Libraries  
University of Missouri

#### Digitization Information Page

Local identifier                      MizzouWeekly(print)

#### Source information

Format                                      Newspaper  
Content type                                Text with images  
Source ID                                    Duplicate copies University Archives weeded out  
Notes                                         Volume 20: Issue 31, May 31, 1999 is a photocopy of the original.

#### Capture information

Date captured                              July-December, 2022  
Scanner manufacturer                    Plustek OpticBook  
Scanner model                              A300 Plus  
Scanning system software                Book Pavilion  
Optical resolution                         600 dpi  
Color settings                              8 bit grayscale for majority of pages;  
    24 bit color for color illustrations/portraits/photographs  
File types                                    tiff  
Notes

#### Derivatives - Access copy

Compression                                Tiff: LZW compression  
Editing software                            Adobe Photoshop 2022  
Resolution                                    600 dpi  
Color                                         same as captured  
File types                                    pdf created from tiffs  
Notes                                         Images cropped, straightened, and brightened.