

MIZZOU WEEKLY

The University of Missouri - Columbia

Sept. 10, 1982

Inside -
Suggestion form
Free courses for faculty & staff

Founder recalls evolution of 25-year-old collection

"I just couldn't teach without things," says Saul Weinberg about his early days at the University.

"I'm an archaeologist, and an archaeologist deals with things," explains the UMC professor emeritus of art history and archaeology.

Those were the days before the Museum of Art History and Archaeology, when students in those fields had no opportunity locally to see or even touch the objects about which they were learning.

But at Johns Hopkins, where Weinberg had studied, "when Greek vases were being discussed, Greek vases were passed around the table (among the students)," he says.

Without such hands-on experience, students "can't really develop the connoisseurship and appreciation" needed in their field, Weinberg believes. Books, slides and pictures just aren't enough to teach this, he says.

So in 1957 he decided to establish a "study collection" to use in teaching archaeology; then University President Elmer Ellis and Dean Tom Brady authorized a budget of \$2,500 for Weinberg's project.

Composed predominately of artifacts found by Weinberg and his wife, Gladys, during an excavation in Cyprus, the collection was housed on the second floor of Jesse Hall—in display cases from the 1904 St. Louis World's Fair.

Twenty-five years and 8,000 objects later, that collection, since renamed the Museum of Art and Archaeology, celebrates its silver anniversary this fall.

Weinberg says he never expected his collection to grow as it did, into the third largest art museum in the states.

Gifts started coming in for the collection soon after it was established, however. They came mostly from collectors in the East who had no ties with either Missouri or the University. Weinberg explains that gifts to the nation's major museums must be "extraordinary" to warrant display space; less-than-spectacular items are often stored away in basements and warehouses. Collectors who want their gifts to be seen and appreciated will often choose to donate the objects to University

museums.

One such gift in 1961, 14 paintings from the Kress Collection, changed Weinberg's ideas about the museum, he says.

His "study collection" came of age that year with its acquisition of the paintings, ranging in date from the early 15th to the mid-18th centuries. Half of them had been displayed in the National Gallery of Art in Washington, D.C.

That was also the year the collection moved from Jesse Hall to the fourth floor of Ellis Library and became known as the Museum of Art and Archaeology.

Fifteen years later, the museum moved again, this time to the old Chemistry Building on Francis Quadrangle, which was remodeled and renamed Pickard Hall, after John Pickard, UMC's first professor of art history in 1891.

Four graduate students worked six months to design, build display cases and install exhibits; in November 1976, the museum moved to its current home.

One "outcome of moving into this building" Weinberg says, was the establishment of a friends' organization, Museum Associates. "It would not have been possible before where we had such cramped quarters."

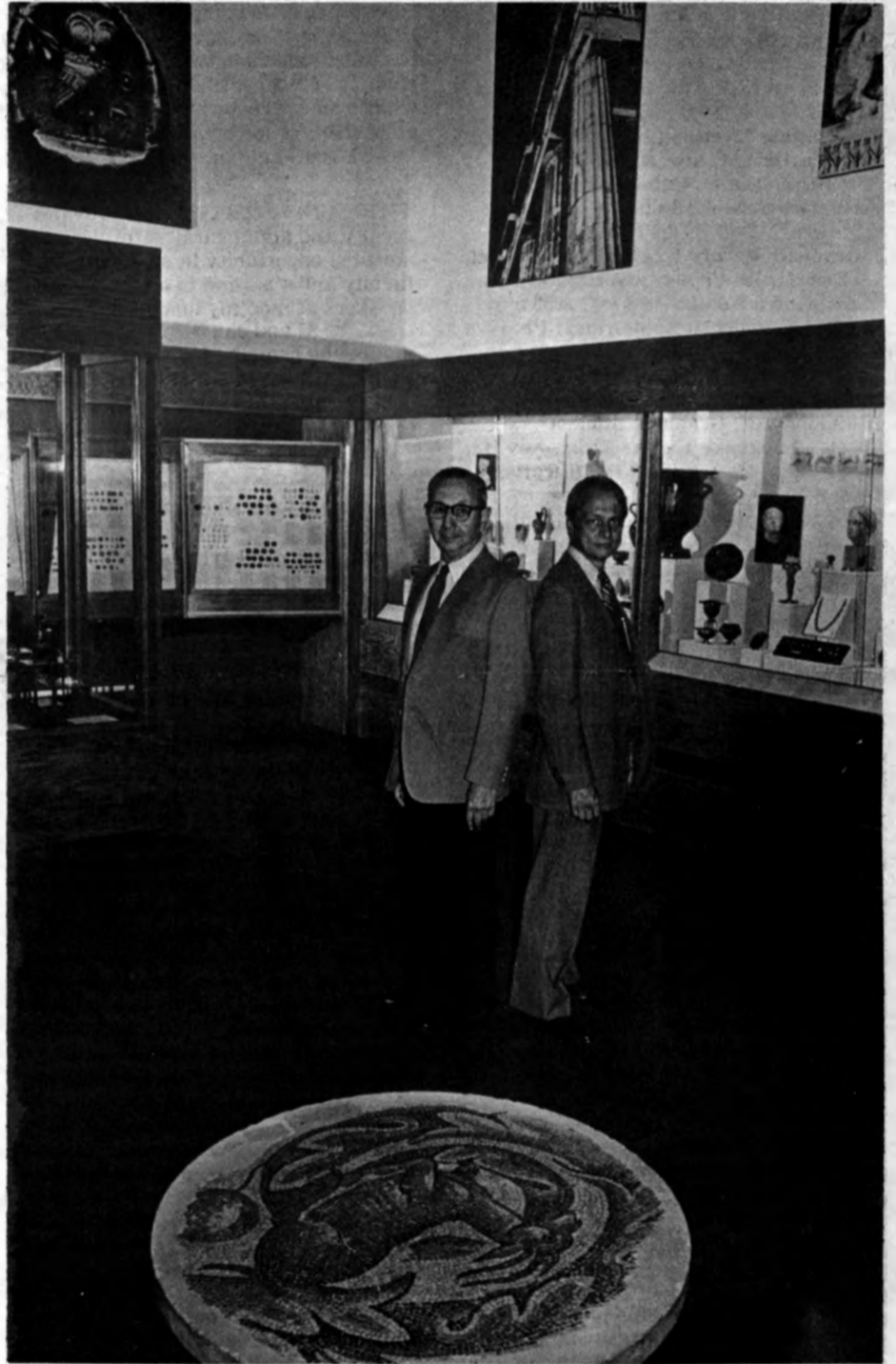
Now 850 members strong, Museum Associates run the gift shop, serve as tour guides and set up educational programs.

Weinberg has since retired as director; he was replaced by Osmund Overby in 1977. But the "father" of the museum still maintains an office in Pickard Hall; the walls of that office are lined with publications from museums all over the world.

UMC reciprocates by sending them copies of *Muse*, the Museum of Art and Archaeology's quarterly magazine, published since 1967.

"It's amazing the things that come in," Weinberg says. "It's indicative of the (museum's) value...they want to know what we have and what research we're doing."

"It touches on the lives of all kinds of people everywhere," he says of the museum he started 25 years ago. Then he smiles. "I don't think I've ever had as much fun doing anything as I've had in forming this museum."



Larry Boehm

Saul Weinberg, (left) founder of the Museum of Art and Archaeology, with the museum's present director Osmund Overby, stands surrounded by priceless treasures in the museum's Ancient Gallery.

Open house celebrates museum's 25th anniversary

The Museum of Art and Archaeology celebrates its 25th anniversary with a gala open house from noon to 6 p.m. Sunday, Sept. 19. The day will feature gallery talks, films, music, a special fashion show, refreshments, unique items from the Museum Shop and more.

Visitors to the open house will be able to choose from a wide range of activities. Tours will begin every half hour, focusing on particular aspects of the collection, with topics including Egyptian religion, ancient writing, Chinese and Japanese art, paintings, conservation, African

sculpture and highlights from the current Fred Shane exhibit.

Films which are works of art in themselves, such as Fernand Leger's *Ballet Mecanique* (1924) and *Synchromy* (1972), an unforgettable "op art" symphony, as well as films about art (on Georgia O'Keeffe, Degas and Leonardo da Vinci, for example) will be shown throughout the afternoon.

A highlight of the open house will be a fashion show at 3 p.m. inspired by objects in the collection dating from prehistoric times to the present.

Renaissance and Baroque ensembles will provide music in the galleries, while Missouri folk musicians will perform outside in the sculpture garden, where refreshments will also be available. Open house hosts and hostesses will wear costumes representative of the many periods and cultures encompassed by the Museum collection, and visitors are encouraged to "be creative" and attend in costume as well.

Visitors will have the opportunity to purchase unique items from the Museum Shop at reduced prices. In addition, the

new *Illustrated Museum Handbook* and a 25th anniversary commemorative poster (featuring a 14th century silver object from the collections) will be for sale. Visitors waiting for tours or films can shop, have themselves photographed as a "mummy," and test their knowledge with the book of gallery games and quizzes which has been prepared especially for the occasion.

The open house is sponsored by Museum Associates Inc., the friends' group of the Museum.

Around the Campus

UNIVERSITY ASSEMBLY LECTURES—Faculty members interested in financial assistance to bring a lecturer to campus may submit requests to the University Assembly Lecture Series.

Application forms with instructions have been sent to all deans, directors and department chairmen for distribution. Deadlines for receipt of applications are Sept. 17, Oct. 8 and Nov. 12.

For more information, call Mrs. Gorges at 882-6966.

THE FOLLOWING TESTS will be administered at UMC during the fall semester:

Medical College Admission Test: 8 a.m. Sept. 11, 126 Physics; 8 a.m. Sept. 12, 1 Parker; **CLEP General Exams:** 8 a.m. Sept. 16, Oct. 14, Nov. 18; **CLEP Subject Exams:** 8 a.m. Sept. 17, Oct. 15, Nov. 19; **Real Estate Licensing Exam:** 8:30 a.m. Sept. 25, Oct. 23, Nov. 20, 126 Physics; **TOEFL:** 8:30 a.m. Oct. 2, Nov. 20, 40 A&S; **Law School Admission Test:** 8:30 a.m. Oct. 2, Dec. 4, 126 Physics;

Graduate Record Exam: 8:15 a.m. Oct. 16, Dec. 11, 126 Physics; **Graduate Management Admission Test:** 8:30 a.m. Oct. 23, Middlebush Auditorium; **Pharmacy College Admission Test:** 8:30 a.m. Nov. 6, 41 A&S; **National Bar Exam:** Nov. 12; **APICS Exam:** 8:30 a.m. Nov. 13, 12 Middlebush; **Graduate Student Foreign Language Exam:** 9 a.m. Nov. 13, 120 Physics; **Professional Qualification Test:** 8:30 a.m. Nov. 13, 1 Parker.

For more information, call 882-4801.

THE UNIVERSITY NATATORIUM will be open for faculty and staff from 12:30 to 1:30 p.m. Monday through Friday, and for students, faculty and staff from 7 to 9 p.m. Tuesday through Friday and from 2 to 4 p.m. Saturday.

Sunday Family Swim (for students, faculty and staff) is held from 2 to 4 p.m.

A TYPEWRITER MAINTENANCE AGREEMENT with Cal-Type Inc. has been extended for University IBM electric models and all other electric typewriters on campus.

The contract allows unlimited service calls during normal business hours and one scheduled inspection a year that includes cleaning and lubrication.

The contract excludes service and parts required due to accident, negligence, specification changes or causes other than normal use.

The Purchasing Department encourages departmental evaluation of Cal-

Type service throughout the 1982-83 academic year.

Questions concerning the service agreement should be directed to Robert Menzel at 882-3201, extension 29.

NON-PROFIT MAILING is available for University correspondence requiring 200 or more pieces (or 50 lbs. or more) of mail. Each piece must be identical in size and weight, and must be printed matter only.

The University has a No. 31 permit for this service, but all mail must be taken to the Post Office by University Printing Services. Departments cannot mail at the Post Office or in campus mail boxes.

The price of postage dropped as of July 28, 1982, from 5.9 to 4.9 cents per piece, or from 27 to 21.4 cents per pound, whichever is greater. Call Larry Mullen at 882-7801 for information on how to use this cost-cutting measure.

THE UNIVERSITY CLUB provides faculty and administrative/professional staff the opportunity to meet with other faculty and staff and to hear outstanding speakers at monthly luncheon meetings. Dues are \$5 and can be paid at the Sept. 15 meeting or mailed to Neila Pettit, 201 Education. Call Gerri Kaufman at 882-3677 by noon Sept. 14 to register for the first meeting.

NO FEES FOR STORING RECORDS AT RECORDS CENTER—Academic and administrative departments are not charged for storing their records at the University Records Center at Kansas City, according to the Office of Records Management, unless these records are retained beyond the approved retention period as established by the Records and Archives Committee.

Auxiliary and recharge type service operations, however, such as the Bookstore, Computer Network, Health Sciences departments, Residential Life, Athletic Department, etc., are assessed an annual fee for storing any of their records at the Center.

Unscheduled records (i.e., records for which a retention schedule has not been developed by Records Management) are also charged the \$3.44 per box per year fee, but this fee is waived if the department asks that such a schedule be worked out.

Departmental records transferred to the Archives are not assessed any type of storage fee.

Information on official retention periods for most university records can be found in Section 11, Business Policy and Procedure Manual. Questions on the fee policy or the Records Management program in general should be directed to LeRoy F. Morrison, 6 Clark Hall, 882-2321.

FULBRIGHT-HAYS GRANTS—Applications for these study-abroad grants are available through the UMC Center for International Programs and Studies in 101 Gentry Hall, or by calling the center at 882-6007.

The deadline for application is Oct. 1, 1982. Applicants must be U.S. citizens at the time of application and must hold a bachelor's degree or its equivalent before the beginning date of the grant. The bachelor's degree is not required for creative and performing artists with four years of professional study or experience. In most cases, applicants must be proficient in the language of the host country.

AUDIO-VISUAL SUPPLIES are again available this semester at the Academic Support Center, 505 E. Stewart Road.

Audio tapes (reel-to-reel and cassette), video tapes (half-inch and three-quarter inch), projector bulbs, photographic film and processing are available by departmental IDO or cash.

A.V. Production Services also are offered for graphics production, photography and videotaping.

For more information, call 882-3606. For information on short-term equipment rental, contact 882-3601.

CHILD CARE VACANCIES—The University Hospital Child Care Center has full-time openings available for the children of RN/LPN employees and some temporary full-time openings for the children of other campus employees.

The center is open from 6:30 a.m. to midnight seven days a week. The five age-group divisions provide care for children ages six weeks through fourth grade in day, evening and weekend programs.

For applications and information on fees and available openings, contact Mary Hegeman at 882-8146.

FIND YOURSELF with one of the recently updated maps of the UMC campus, available free of charge through the Office of Visitor and Guest Relations, 103 Swallow Hall. The reverse side of the map carries directions for highway access to the campus and lists of UMC schools, colleges and several offices and services.

These maps may be purchased in quantity from University Printing, 417 S. Fifth, at \$3.75 per hundred. The map number is VGR BFM 0881. Larger copies, 23" x 29", on paper suitable for reproduction, may be purchased from Visitor and Guest Relations, three for \$2.50.

HERTZ RENTAL CAR AGENCY is currently the only agency operating out of Columbia, and does not offer a special rate to the University from either the Kansas City or St. Louis airports to Columbia.

Hertz charges a flat rate of \$58 per day plus gasoline with unlimited mileage to both airports. However, from the airports, this flat rate is not available and the cost of a compact of class "B" rental car is currently \$46 per day less a 10 percent discount, plus a \$30 drop charge, plus gasoline—approximately \$75 to \$80.

Faculty and staff are encouraged to make reservations with Hertz for return trips from Kansas City or St. Louis, as the Hertz agency will guarantee the rate for the subcompact class "J" and "A" cars and compact class "B" cars even though only a higher cost class "C" car might be available for the return trip. The daily rates for the class "J," "A" and "B" cars are \$36, \$40 and \$46 per day respectively.

Provost Bunn announces new meeting schedule for Council of Deans

The 1982-83 meeting schedule of the Council of Deans has been announced by Provost Ronald Bunn. All meetings will be open to faculty as well as to the public.

The Council will meet at 3 p.m. in the Forum Room, Gannett Hall, except on Feb. 1 when the group will convene in S110 Memorial Union. Meetings have been scheduled for Sept. 14, Oct. 5, Nov. 2, Dec. 7, Jan. 4, Feb. 1, March 1, April 5 and May 3.

FULTON CARPOOL—Any University employee driving from Fulton who would like a passenger and help in gasoline expenses may contact Barbara Digh at 882-4246. Digh works 8 a.m. to 5 p.m. or 7:30 a.m. to 4:30 p.m. Monday through Friday.

THE STUDENT-PARENT CENTER has half-day openings for students' children four weeks to 30 months old. Call 882-4224 or 882-3621 for information.

THE SCHOOL OF NURSING'S Continuing Education Program will offer a month-long program on "Increasing Skills for Nursing Assessment." Open to a limited number of registered nurses, the program runs from Sept. 29 to Oct. 30. For more information, call 882-6403.

ENROLLMENT OF NATIONAL MERIT AND ACHIEVEMENT SCHOLARS at UMC increased from 203 to 207 for the 1982-83 academic year, ranking the University second among the Big Eight universities in total National Achievement and Merit scholars, ninth among public institutions and 19th among all institutions of higher learning, private and public. UMC ranked first in the Big Eight for National Achievement Scholar enrollment.

THE UNITED STATES SOCIETY FOR EDUCATION THROUGH ART is seeking submissions by authors pursuing research in multi-cultural and cross-cultural research in art education for its new professional journal.

Manuscripts must be submitted by January 30, 1983 and will be juried by blind review. Those received after this date will be considered for future issues.

For information concerning manuscript requirements, contact Larry A. Kantner, A202 Fine Arts.

MIZZOU WEEKLY

Vol. 4, No. 2

A publication of the University of Missouri-Columbia faculty and staff, published every Friday during the academic year and once a month during the summer by the Office of Internal Communication, University Relations Division, 606 Maryland Ave. News deadline is noon Friday of the week before the issue.

Advisory Board: Keith Sanders, Delmar Hatesohl, Roy Utz, Gerald Brouder, Marjorie Marberry, Harri Palmer, Jim Brechbuhler, Bob Derryberry, Lealure Tindall.

Editor: Diana Reese
Assistant Editor: Betsy Brill
Editorial Staff: Francine Parker
Barbara Reeves
Telephone: 882-6004

Cost-cutting suggestions

A committee appointed by Chancellor Barbara Uehling is seeking suggestions from faculty and staff on ways to cut costs at the University. Please send suggestions through campus mail to: Committee on Cost-Savings Suggestions, Chancellor's Office.

Name _____

Department _____

Suggestion _____

Approximate amount saved _____

Explain how this suggestion cuts costs _____



Faculty and staff can sign up for free fall courses

Learning opportunities abound at UMC for employees as well as students.

Adult Ed

Through a cooperative arrangement with the Columbia Public Schools, full-time University employees can enroll free of charge in a variety of classes scheduled through the city's Adult Education Program.

Employees must be classified at least 75 percent FTE, employed for six months and scheduled to work a minimum average of 30 hours a week.

Preference is given to employees enrolling in courses that are job related, and applications are processed on a first-come, first-served basis. Enrollment information is available through the Office of Personnel Services/Employee Relations at 309 Hitt St., 882-4256. Officials expect the classes to fill rapidly

and encourage those interested to register before the Sept. 24 deadline.

The following classes are scheduled to begin the week of Sept. 27:

- 200 Basic Accounting; 201 Basic Accounting; 202 Advanced Accounting; 203 Traditional Shorthand; 204 Alphabetic Stenoscrypt; 205 Shorthand Review/Dictation; 206 Beginning Typewriting; 207 Beginning Typewriting; 208 Typing Review; 209 Typing Review; 210 The Art of Proofreading; 211 Business English; 212 Medical Terminology; 213 Being a Ward Clerk; 214. Accounting (Certified Professional Secretary's Review); 215 Economics (Certified Professional Secretary's Review); 216 Business Law (Certified Professional Secretary's Review); 219 Fundamentals of Computer Data Processing; 222 and 223 Introduction to

Computer Data Processing; 227 and 228 Introduction to Cobol Programming; 230 and 231 Programming with Cobol; 236 and 237 Learning to Program with Basic; 238 and 239 Enhancing Basic Programming Techniques;

A-Beginning Drafting; B-Algebra; C-Basic Math; D-Beginning Manual English; 101 and 102 Basic Oxy-Acetylene Welding; 201 and 202 DC Current Fundamentals; 211 AC/Linear; 301 Basic Refrigeration and Air Conditioning; 311 Advanced Refrigeration and Air Conditioning; 401 Practical Electricity and House Wiring; 501 Small Engine Maintenance and Repair; and Individualized Office Machines.

Computer Classes

The mysteries of the world of computers can be unraveled for UMC faculty, staff and graduate students through free short courses offered by the Academic

Computing Center. To enroll in the classes, held in 106 Lefevre Hall, call 882-6382:

- Introduction to JCL, 3:40 p.m. daily from Sept. 7 to 17.
- SPIRES Searching & Updating, 2:40 p.m. daily from Sept. 20 to Oct. 1.
- SPIRES File Definition, 2:40 p.m. daily from Oct. 4 to 8.
- Introduction to SAS79, 3:40 p.m. daily from Sept. 20 to Oct. 8.
- Introduction to TSO, 2:40 p.m. daily from Oct. 11 to 15.
- Advanced TSO, 2:40 p.m. daily from Oct. 18 to 22.
- Introduction to CMS, 3:40 p.m. daily from Oct. 11 to 22.
- Text Processing with SCRIPT/VS, 2:40 p.m. daily from Oct. 25 to 29.
- SAS/FSP, 3:40 p.m. Oct. 25, 26 and 27.
- SAS/GRAPH, 3:40 p.m. daily from Nov. 1 to 12.

Jobs

Faculty openings

The following teaching and research positions are available at the University; however, all of the positions are dependent upon funding and enrollment. For more information, call the Office of the Associate Provost, 116 Jesse, at 882-2094.

Chairperson of the Department of Horticulture—Responsibilities include budget preparation and administration; leadership and advice for faculty in areas of teaching and development; regular communication with program leader and staff of department Extension program; development of international dimension to Department's programs; development of relationship with representatives of the state horticulture industry. Requires Ph.D. in horticulture or in closely related discipline; demonstrated research, teaching and/or Extension abilities; effective communication skills in dealing with administrators, faculty and staff, students and industry personnel. Deadline 10/15/82.

Research associate in atmospheric science—available 9/15/82. Responsibilities include developing methods of using satellite images to assess the impact of weather conditions on crop growth and yields, including use of visible and infrared satellite pictures of cloud cover to estimate extent and amount of rainfall for use in statistical crop models. Requires Ph. D. in remote sensing, satellite meteorology or data management and experience in use of computer languages and use of large data sets. Deadline 9/10/82.

Research associate in agronomy—available 9/1/82. Responsibilities include the direction of a sponsored project dealing with the effect of sewage sludge application on soil biological properties and fertility, as well as research on the carbon balance in soils under various agroecosystems. Requires Ph.D. in soil microbiology, post-doctoral research experience in soil biology and biochemistry, as well as experience with radioactive carbon labeling. Deadline 10/82.

Assistant or associate professor of radiology, available 11/1/82. Responsibilities include department and medical school teaching, as well as clinical duties at University Hospital and the VA Hospital. Requires interest and experience in academic radiology and research interest in some area of radiology. Deadline 10/1/82.

Assistant or associate professor of recreation and park administration—available 9/1/82. Responsibilities include teaching undergraduate and graduate level courses; conducting research; preparing scholarly publications; coordinating undergraduate curriculum; preparing and submitting proposals for extramural funding; advising students and committee participation. Requires at least one graduate degree in parks and recreation or an area acceptable under guidelines established by the National Parks and Recreation Association Council on Accreditation; a doctorate in area related to parks and recreation is desirable, although candidates with ABD will be considered; also requires at least three years of teaching experience in higher education and evidence of the conduct of research and scholarly productivity, as well as participation in professional organizations.

Assistant professor of radiology—available 11/1/82.

Responsibilities include teaching both within and outside the department, as well as clinical responsibilities at University Hospital and the VA Hospital. Requires interest and experience in academic radiology and research interest in some area of radiology. Deadline 10/1/82.

Assistant or associate professor of neurology—available 1/1/83 to 8/31/83. Responsibilities include teaching, patient care and service. Requires American Board of Psychiatry and Neurology eligibility for certification. Deadline 12/31/82.

Assistant professor of neurology—Available 1/1/83 to 8/31/83. Requires teaching, patient care and service responsibilities, development of academic program in EMG and neuromuscular diseases. Requires American Board of Psychiatry and Neurology eligibility for certification in Neurology, at least one year of specialty training in neuromuscular diseases (EMG) or other subspecialty in addition to necessary training for certification. Deadline 9/15/82.

Assistant professor state food and nutrition specialist—Responsibilities include service as a state nutrition specialist and team member with University of Missouri-Lincoln University Extension, assisting area Extension F&N specialists in program needs assessment, program development and evaluation, monitoring scientific information and keeping area specialists abreast of new developments, developing appropriate nutrition education materials. Requires Ph.D. in nutrition/nutrition education/community nutrition, demonstrated communication skills, ability to translate scientific subject matter information for use in lay-audience education programs, including low-income and low-literacy clientele, competence and program development abilities. Extension or adult education experience desirable. Deadline 9/15/82.

Assistant professor in human nutrition, foods and food systems management—available 1/1/83. Responsibilities include faculty membership, teaching in "foods" area (science of food preparation, experimental foods, etc.), developing "foods" research program, advising undergraduate and graduate students, service to professional and academic communities. Requires Ph.D. in foods/foods and nutrition/food science, effective communication skills, ability to develop research program in foods. Deadline 12/1/82 or until filled.

Assistant/associate/full professor of industrial engineering—available 1/10/83. Responsibilities include teaching, research and service, initiating externally funded grant and contract proposals to federal and state governmental agencies and private industries and foundations. Requires Ph.D. in industrial engineering, teaching experience, interest in applying IE and Operations Research tools and techniques to industrial and societal systems problems. Deadline—until filled.

Associate professor/professor of electrical engineering—available 8/23/82. Responsibilities including teaching undergraduate and graduate courses, student advising, developing and conducting research in the preferred area of power systems, rotating machinery and/or power semiconductors or related areas. Requires Ph.D. in E.E., research interest in above areas. Teaching experience desirable. Deadline 12/15/82.

Nonregular instructor in physical therapy/HRP—available 9/1/83 to 8/31/84. Responsibilities include teaching undergraduate physical therapy students, clinically oriented research and patient care and advising students. Requires Missouri registration as physical therapist, master's degree in related discipline. Deadline 8/01/83 or until filled.

Staff openings

The following job openings at the University were approved and posted Friday, Sept. 3, and include the department where the vacancy exists. The openings are listed under the name of the Personnel recruiting staff member handling the positions. For more information or to apply for a job, contact the appropriate recruiter at the Personnel Office, 309 Hitt St., at 882-4221. Salary codes follow each listing in parentheses.

CHARLES HUNTER Professional/Administrative

Coordinator, Special Assignments (E-8), University Relations-UMca; Senior Fiscal Analyst (E-7), Investment Trust-UMca.

MARY SLEDGE Professional

Administrative Associate I (E-5), University Book Store; Assistant Manager, Accounting Services (E-9), Accounting Services; Continuing Education Coordinator (E-4), UED—Veterinary Medicine; Executive Staff Assistant I (E-5), School of Nursing; Fiscal Analyst (E-4), Budget Services; Student Services Coordinator (E-7), Women's Ctr.—Student Development; Supervisor, Veterinary Medical Records (M-58), Veterinary Medicine & Surgery; Sr. Information Specialist (E-7), University Relations.

CINDY MORRIS Research/Data Processing

Computer Programmer I (M-59), B&PA Research Center; Computer Programmer/Analyst II (E-9), Admin. Computing Services, Atmospheric Science; Histologic Technician (M-58), Anatomy; Licensed Practical Nurse (M-58), Child Health; Research/Laboratory Technician (M-56), Agronomy, Plant Pathology, Vet. Med. Diag. Lab.; Research Specialist (E-5), Dalton Research Center; Sr. Research/Laboratory Technician (M-59), Biological Sciences, Pharmacology, Physiology; Systems Analyst (E-9), CIS Information Systems-UMca.

JANE CORREIA Secretarial

Chief Accounting Clerk (M-57), Biochemistry; Data Entry Operator II (M-55), Campus Facilities; Secretary (M-55), UMC Budget Office, Cardiothoracic Surgery, B&PA Marketing, Home Economics-Assoc. Dean's Office, Electrical Engineering, State Historical Society-UMca, School of Social Work, School of Forestry, Fisheries & Wildlife;

Secretary-Stenographer (M-54), Coop. Ex.-Poultry Science, Veterinary Microbiology, Library & Information Science, Coop. Ext.-Horticulture; Sr. Clerk (M-55), Residential Life; Sr. Clerk Typist (M-54), School of Nursing, Agronomy, Sr. Secretary (M-57), Property & Risk Management-UMca, Physical Medicine & Rehabilitation, B&PA-Extension; Sr. Stenographer (M-54), Coop. Ext.-Information, School of Nursing, Music. Sr. Accounting Clerk (M-55), University Press-UMca.

CAROL WAITS Clerical/Service

Stenographer (M-58), English; Data Entry Operator (M-53), Student Aid Accounts.

Part-Time/Temporary

Accounting Clerk (M-52), ICA (30 hrs. per week, perm.), Clerk Typist II (M-53), Amer. Archaeology (F.T. Temp. till 1-83); Secretary-Stenographer (M-54), Child Health (20 hrs. per week, perm., effective 10-82); Seasonal Farm Worker (apple picker) (H-1), Ag. Director's Office (25-30 hours per week, temp.); Sr. Research/Laboratory Technician (M-59), Child Health (F.T. Temp. till 3-83); Student Assistant-Technical, Surgery (30 hours per week), Pharmacology (10-12 hours per week).

The following jobs were listed by the Health Sciences Center Personnel Office. For more information, call 882-8186.

ANN NADLER Administrative/Professional

Administrative Dietician-Nutrition & Dietetics (2); Assistant Manager-Medical Records; Assistant Manager-Patient Accounts; Child Life Activity Therapist-Pediatrics; Pharmacists-Pharmacy; Supervisor-Medical Records.

LORI TANZER Administrative/Professional

Assistant Manager-Radiology; Radiation Physicist-Radiology.

PATTY SCOTT Clerical

Administrative Secretary-MPIP; Clerk II-Medical Records (3)-Plant Engineering; Hospital Unit Clerk-Nursing Service (4); Secretary-Social Service; Senior Accounting Clerk-Nursing Service; Senior Clerk Typist-Nursing Service, Medicine area; Senior Receptionist-Family Medical Care Center; Senior Secretary-Nutrition & Dietetics-Pathology (2); Receptionist II-Radiology.

GINA KINCAID Nursing - 882-8701

Administrative Nurse I-Nursing (5); Clinical Nurse I-Nursing (6); Education Nurse I-Nursing (2); IV Nurse-Pharmacy; Licensed Practical Nurse-Nursing, Nurse Anesthetist-Anesthesiology (3), Staff Nurse-Nursing (15).


ANN NADLER Technical Pharmacy Technician-Pharmacy.

LORI TANZER Technical

Histologic Technician-Pathology; Medical Technologist-Special Hematology; Nuclear Medicine Technologist-Radiology; Occupational Therapist-Occupational Therapy (2); Physical Therapist-Risk Hospital (2); Registered Respiratory Therapist-Respiratory Therapy.


Part-time or temporary

Data Entry Operator II-Nursing Service; Food Service Attendant I-Production-Cafeteria (2), Food Service Supervisor-Cafeteria; Hospital Unit Clerk-Nursing Service, (3); IV Nurse-Pharmacy (2). Licensed Practical Nurse-Nursing (2), Secretary-Nursing Service; Staff Nurse-Nursing (10); Staff Nurse-Nursing (2).



The Staff for Life

We're on call
at the University
Hospital and Clinics.



This Week

To list your department or division's events in the next *Mizzou Weekly*, write or call the Office of Internal Communication, 606 Maryland, 882-6004, by Friday two weeks before the event is scheduled.

All events are free and open to the public unless otherwise noted.

10 Friday

MSA Weekend Movie: "Taps," 7 and 9:30 p.m., Jesse Aud. Tickets \$1 in advance, \$1.50 at the door.

MSA Midnight Movie: "No Nukes," Jesse Aud., \$1.

Physiology Seminar: "The Role of Endogenous Opiate Peptides in Peripheral Adrenergic Neural Transmission," Ronald R. Gaddis, Post-doctoral Fellow, Dalton Research Center, 11:40 a.m., S255 Nursing.

Telescope Viewing and Astronomy Film: "Space Exploration: A Team Effort" and "The Universe: Beyond the Solar System," 7 p.m., 114 Physics, followed by telescope viewing on the roof at 8 p.m.

11 Saturday

MSA Weekend Movie: "Sharkey's Machine," 7 and 9:30 p.m., Jesse Aud. Tickets \$1 in advance, \$1.50 at the door.

MSA Midnight Movie: "No Nukes," Jesse Aud., \$1.

UMC vs. Army: Kickoff time 1:30 p.m. General admission \$5.50, reserved \$10.

12 Sunday

MSA Free Film: "Anchors Aweigh," 7 and 9:30 p.m., Memorial Union Aud.

University Film Series: "The Music Lovers," 8 p.m., Ellis Aud.

Drop-in Tours: Museum of Art and Archaeology, general guided tours, 2 p.m.

Family Swim: 2-4 p.m. Natatorium

Biblical Archaeology: First in 6-week series of lectures by UMC Professor Albert Leonard, 3 p.m., 106 Pickard Hall. Advance registration required, \$25 for Museum Associates, \$12.50 for Student Museum Associates, \$40 for non-members. Checks should be payable to Museum Associates and mailed to Museum Associates, 1 Pickard Hall.

International Night Dinner: Mexican, a la carte, 5 to 6:30 p.m., Memorial Union Cafeteria. Prices vary.

13 Monday

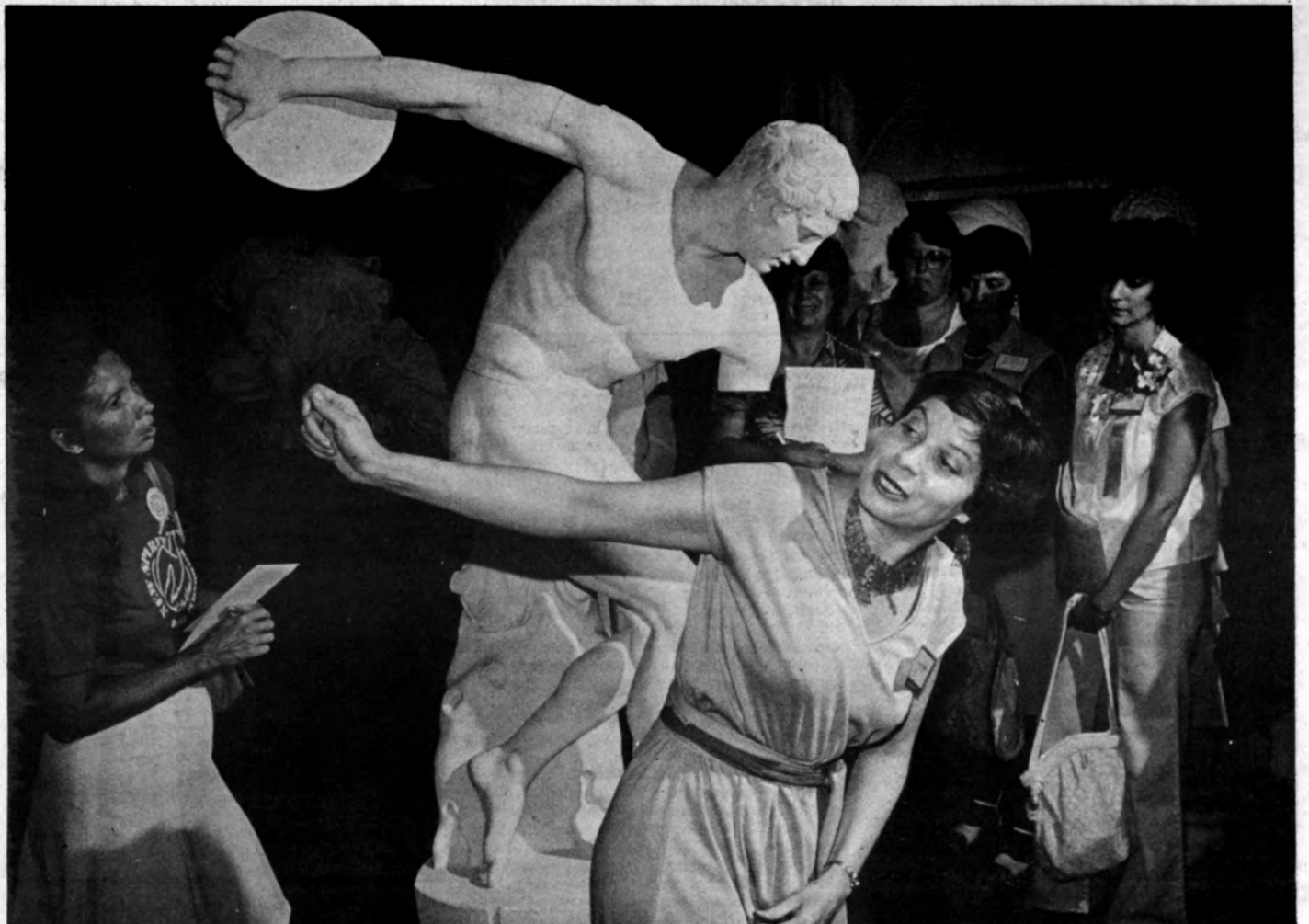
Humanities Lecture: "Renaissance Art," Norman E. Land, associate professor of art history and archaeology, 11:40 a.m. to 12:30 p.m., Ellis Aud.

Women's Center: "Ain't I a Woman?," the role of black women in contemporary society, noon, basement Gentry Hall.

Women's Center: Support Group for Women Graduate Students, first of a series of discussions to be held on Mondays, 7 p.m., basement Gentry Hall. Call 882-6621 or 882-6549 for registration information.

Women's Center: Intensive Journal Writing Method Study Group, first of a series, 7 to 8 p.m., basement Gentry Hall. Call 882-6621 or 882-6549 for registration information.

Microbiology Seminar: "Mechanisms Confining Indigenous Bacteria to the GI



Larry Boehm

During one of the Museum of Art and Archaeology's guided tours, Jeanette Thompson demonstrates the way a discus thrower would actually have turned his head. Later discoveries of this popular statue—with heads attached—indicate that earlier pieces had been restored with heads on backwards. Tours such as this one will be part of the museum's open house Sept. 19.

Tract," Earl Steffen, UMC Veterinary Diagnostic Lab, 1:40 p.m., M640 Medical Sciences.

Biological Science and Biochemistry Seminar: "Unusual Aspects of Human Thymidylate Synthase in Mouse Cells Introduced by DNA-Mediated Gene Transfer," Takeshi Seno, Saitama Cancer Center Research Institute, Saitama-Ken, Japan, 3:40 p.m., 18 Tucker Hall.

Pharmacology Research Seminar: "Genetic Models of Alcohol Tolerance and Dependence," John C. Crabbe Jr., Portland, Oregon VA Medical Center, 4 p.m., M538 Medical Sciences.

14 Tuesday

Tapestry Weaving Class: Six sessions, MSA Craft Studio, 203-207 Brady Commons, 7 to 9 p.m. Cost \$22.

Women's Center: "How to Juggle Your Time to Include Family, Studying, Work and Basic Living?" noon, basement Gentry Hall. Call 882-6621 or 882-6549 for registration information.

Pharmacology Seminar: "Pharmacologic Manipulation of the Excretion and Alkylating Activity of Melphalan," Keith Byington, associate professor of pharmacology, UMC, 4 p.m., M538 Medical Sciences.

Neuroscience Seminar: "Ecological Influences on the Design of Acoustical Communication Signals," Charles Brown, assistant professor of psychology, UMC, 7:30 p.m., 112 Lefevre Hall.

15 Wednesday

Spinning Classes: Eight sessions, MSA Craft Studio, 203-207 Brady Commons, 7 to 9 p.m. Cost \$27.

Women's Center: Support Group for Children of Alcoholics, first of eight sessions to be held 7 to 8:30 p.m., Wednesdays, basement Gentry Hall. Call 882-6621 or 882-6549 for registration information.

Women's Center: "Black Woman: A Film," Nikki Giovanni, Lena Horne, Bibi Amina Baraba and other black women discuss the role of black women in contemporary culture, 7 p.m., basement Gentry Hall.

Lunchtime Mini-tours: "Aren't I pretty? Ouch!," cosmetic mutilation in the ancient Americas, 12:25 p.m., lasting no longer than 30 minutes, Museum of Art and Archaeology.

Humanities Lecture: "Renaissance Art," Norman E. Land, associate professor of art history and archaeology, 11:40 p.m. to 12:30 p.m., Ellis Aud.

MSA Free Film: "African Queen" and "Maltese Falcon," 7 and 9:30 p.m. Jesse Aud.

Faculty Recital Series: Pianist Janice Wenger, performing Haydn's *Sonata in A-flat*, Ravel's *Sonatine* and Schumann's *Kreisleriana*, 8 p.m., Fine Arts Recital Hall.

University Club: UMC Football Coach Warren Powers guest speaker, noon N214-215 Memorial Union. \$4.75 for luncheon. Reservations by noon Sept. 14; call Gerri Kaufman at 882-3677.

16 Thursday

University Film Series: "Monkey Business," 8 p.m., Ellis Aud.

Woodworking Qualifying Course: MSA Craft Studio, 203-207 Brady Commons. Cost \$5.

Women's Center: "Black Women's Organizations in Missouri: A Historical Perspective," noon, basement Gentry

Hall.

17 Friday

MSA Weekend Movies: "Richard Pryor Live," 7 and 9:30 p.m., Jesse Aud. Tickets \$1 in advance, \$1.50 at the door.

MSA Midnight Movie: "Groove Tube," Jesse Aud. Tickets \$1.

Telescope Viewing and Astronomy Films: "Star Trek: Miri," 7 p.m., 114 Physics, followed by telescope viewing on the roof at 8 p.m.

Forestry Seminar: "Black Walnut Industry in Missouri," Hugh Welch, President MFPA, 2:40 p.m., 2-7 Agriculture.

18 Saturday

MSA Weekend Movie: "Pryor Live on the Sunset Strip," 7 and 9:30 p.m., Jesse Aud. Tickets \$1 in advance, \$1.50 at the door.

Women's Center: "Assertion Training for Managers," first day of weekend workshop, 9 a.m. to 5 p.m., basement Gentry Hall. Call 882-6621 or 882-6549 for registration information.

19 Sunday

MSA Free Film: "The Apartment," 7 and 9:30 p.m., Memorial Union Aud.

University Film Series: "J'Accuse," 8 p.m., Ellis Aud.

25th Anniversary Celebration: Museum of Art and Archaeology Open House, 12 to 6 p.m.

International Night Dinner: Italian, a la carte, 5 to 6:30 p.m., Memorial Union Cafeteria. Prices vary.

University Libraries
University of Missouri

Digitization Information Page

Local identifier MizzouWeekly(print)

Source information

Format Newspaper
Content type Text with images
Source ID Duplicate copies University Archives weeded out
Notes

Capture information

Date captured July-December, 2022
Scanner manufacturer Plustek OpticBook
Scanner model A300 Plus
Scanning system software Book Pavilion
Optical resolution 600 dpi
Color settings 8 bit grayscale for majority of pages;
 24 bit color for color illustrations/portraits/photographs
File types tiff
Notes

Derivatives - Access copy

Compression Tiff: LZW compression
Editing software Adobe Photoshop 2022
Resolution 600 dpi
Color same as captured
File types pdf created from tiffs
Notes Images cropped, straightened, and brightened.