

# MIZZOU

W E E K L Y

University of Missouri-Columbia /Feb. 9, 1995

## Federal funding recommended for MU's research reactor

*A National Academy of Sciences panel sees a future for MU as a major supplier of radioisotopes used in medicine.*

An influential panel of scientists studying the production and availability of biomedical isotopes has recommended that the Department of Energy subsidize MU's research reactor to secure its role as a major supplier of radioactive isotopes.

Radioisotopes are the foundations for drugs used in nuclear medicine, and the demand for them is increasing. Although MU is the nation's top supplier of these agents, the competition from international producers is intensifying.

The recommendation comes from the Institute of Medicine, a branch of the National Academy of Sciences.

"The committee did not recommend a specific dollar amount, because its only purpose was to give the energy department some direction as to how it should invest its time and energy. Reactor-produced radioisotopes were part of that recommendation," says Alan Ketring, a senior research scientist and coordinator of the reactor's biomedical program.

"Without actually saying it, however, the committee strongly indicated that DOE should subsidize our reactor," Ketring says. "It's the highest-powered research reactor on any campus and already is supplying many of the radioisotopes currently being used in medicine and biomedical research."

The energy department currently supplies the reactor's fuel supply. Beyond that, federal support is limited to research grants to individual investigators.

In 1988, the National Research Council, another branch of the National Academy of Sciences, recommended that \$20 million be available for at least three years to universities with reactors to help support upgrades and operational costs, but only \$1 million was allocated for the years 1990-93.

The IOM committee said that the observations of the 1988 report are still valid and suggested that \$10 million to \$20 million now being considered for support of a couple of DOE-owned national laboratories would be better spent on radioisotope production at large university reactors, and specifically MU's.

"A federally supported U.S. reactor for the production of research radioisotopes definitely is justified," the report said. "At present, the University of Missouri Research Reactor (MURR) is playing a major role as the supplier of radionuclides for research facilities and radiopharmaceutical

## Radioisotope production at MURR

This is a partial list of the 55 radioactive isotopes produced at the reactor last year and their uses. "In use" indicates they are currently approved for human use and marketed in the United States. "Clinical trials" indicates the isotope is being tested in FDA-approved human clinical trials.

- Phosphorus-32, in use, bone cancer therapy
- Chromium-51, in use, blood cell study
- Cobalt-60, in use, cancer therapy
- Palladium-103, in use, prostate cancer therapy
- Samarium-153, clinical trials, bone cancer therapy
- Gadolinium-153, in use, osteoporosis study
- Dysprosium-165, clinical trials, treating arthritis
- Holmium-166, clinical trials, treating leukemia, cancer, arthritis
- Lutetium-177, clinical trials, cancer therapy
- Rhenium-186, clinical trials, bone cancer therapy
- Rhenium-188, clinical trials, treating thyroid and bone cancers
- Platinum-195m, clinical trials, cancer study and treatment
- Gold-198, in use, cancer therapy

manufacturers. In order to assure the continued supply of radionuclides for medical and research facilities, the institute recommends core support for reactor-based isotope production. The University of Missouri Research Reactor appears to be the best currently available facility that can meet this need."

DOE-owned laboratories include Oak Ridge in Tennessee, Brookhaven on Long Island, N.Y., and Los Alamos in New Mexico. Isotope production at these places is a secondary mission, Ketring says, and it has suffered as support for the laboratories' primary missions of research in nuclear physics, weapons and power has declined.

Please see REACTOR on Page 4.

Professor Emeritus Harold Hedrick, a nationally recognized food science researcher, is known also as the head chef of the Ag Day barbecue.

Rob Hill photo



## Where's the beef?

*Mizzou's 'Mr. Barbecue' is honored at Ag Science Day.*

After 31 years, Harold Hedrick finally got a good night's sleep before the Ag Science Day barbecue. That's because this was the first year in all that time that Hedrick wasn't responsible for feeding the thousand

or so people who show up for Mizzou's annual agriculture shindig.

Hedrick, professor emeritus of food science and human nutrition, would never serve just anything. He always made sure that the

700 or 800 pounds of beef strip loin were slow-cooked all night to perfection and the other fixings were ready to go.

"There's always a little bit of anxiousness associated with it," Hedrick says, remembering those long evenings. "You put the meat on and hope everything goes right. Sometimes I'll wake up a few times at night and wonder if everything's working right."

This year Hedrick sat on the sidelines while the chow-down got under way Feb. 1. He was one of three people to receive a citation of merit from the MU Agriculture

Alumni Association, honored for his long teaching career at Mizzou.

Some people know him simply as Mr. Barbecue, but many alumni who attend the annual event remember Hedrick as a favorite professor. He taught and advised more than 5,000 students, coached prize-winning meat-judging teams and was faculty adviser to a number of student organizations, including the Block and Bridle Club.

Hedrick perfected this routine for preparation of the giant feast, and most of the time the event goes like clockwork. The night before, the head chef and cohorts fire up the room-sized smoker at the meat lab in the Agriculture Building. The slabs of beef cook all night and are ready by the time everyone puts on the feedbag around noon.

But he can recall a couple of culinary catastrophes. "A few times we've had power failures or mechanical failures in the smokehouse," Hedrick says. "A number of years ago the power went out at night and the next morning we had to farm out the meat to dining halls all over campus to have it ready for the barbecue."

A couple of times Hedrick even suggested substituting pork for the traditional beef loin. "The answer was always, 'You can change anything else you want, but don't change that,'" Hedrick recalls.

The barbecue has long been a high point of a week-long series of workshops and conferences that draws farmers and ag industry representatives from around the state. This year, Ag Science Week kicked off a year-long celebration of the College of Agriculture, Food and Natural Resources' 125th anniversary. The focus of many of this year's programs was on best management practices and environmentally friendly approaches to agriculture and natural resources management.

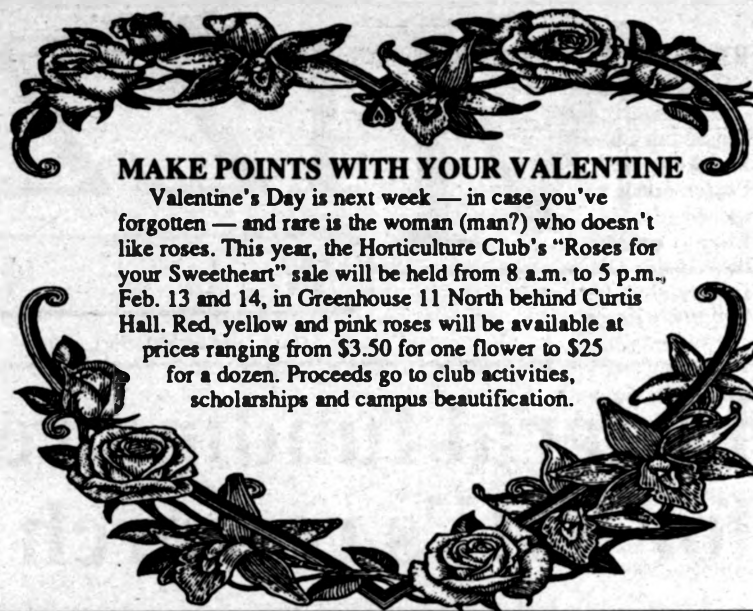


**CINDERELLA RESCHEDULED FOR FEB. 19**

The American Family Theater production of *Cinderella* originally planned for Feb. 5 has been rescheduled for Sunday, Feb. 19, at 3 p.m. in Jesse Auditorium. For ticket information, call 882-3781.

**CHECK OUT MU'S CAREER CENTER**

The Community Career Services program offers individual career counseling and access to a wide array of resources within the Career Center, 100 Noyes Building. Confidential services include exploring career options, coping with work-related stress, job dissatisfaction and more. Low-cost services are designed to meet your needs. Call 882-5414 for information or an appointment.



**MAKE POINTS WITH YOUR VALENTINE**

Valentine's Day is next week — in case you've forgotten — and rare is the woman (man?) who doesn't like roses. This year, the Horticulture Club's "Roses for your Sweetheart" sale will be held from 8 a.m. to 5 p.m., Feb. 13 and 14, in Greenhouse 11 North behind Curtis Hall. Red, yellow and pink roses will be available at prices ranging from \$3.50 for one flower to \$25 for a dozen. Proceeds go to club activities, scholarships and campus beautification.

Campus Dining Services offers

**GREAT THANKS**

to the CDS employees and to the staff and students who volunteered their help during the record snowfall on January 19th.

**Thank You** 

**Deadline for staff recognition awards is Feb. 10**

Staff Recognition Week is a few months away, but already MU's Staff Advisory Council is joining in with staff members from across campus and pitching in for the week-long celebration.

That's because the recognition week is a homegrown effort that honors staff contributions to Mizzou. The week of events will be held from April 10 to 14 this year and the theme is "Staff: Strength in Variety."

One of the high points of the celebration

is the awards ceremony, which will be held April 10 this year. Four staff members — one from each job category — will be recognized for their outstanding efforts with a \$1,000 award.

Also presented at the ceremony are the Barbara S. Uehling Award for Administrative Excellence and the Mick Deaver Memorial Award to honor staff members who foster good relations with students. The deadline is noon on Feb. 10 to nominate individuals for these awards. Nomination materials have been sent to all staff and faculty. Students also may nominate individuals for the awards.

In addition, the Staff Council is looking for volunteers to help with the ceremony and the roster of daily activities that crowd recognition week. With questions about nominations or volunteering for Staff Recognition Week, contact the Staff Council office at 882-4269.

**Staff and Faculty always save 10%\* at**



**UNIVERSITY BOOKSTORE**

Main Level Brady Commons  
882-7611 TDD: 882-3985  
M-Thurs: 8-7 Fri: 8-5 Sat: 9-4  
\*some merchandise exclusions do apply

**MIZZOU PEOPLE**

**Appointments and Promotions**

Warren Thompson, professor and director of graduate studies in health services management, has been appointed to the regent's advisory council of the American College of Healthcare Executives.

**Awards and Honors**

Rodney Custer, assistant professor of practical arts and vocational technical-education, received the 1994 G. Harold Silvius Outstanding Young Industrial Teacher Educator Award Dec. 11.

Mary Leuci, project manager of community development, has been elected to the board of directors of the Community Development Society for 1994-1996.

Eric Lutz, systems analyst of biochemistry, has received a College of Agriculture, Food and Natural Resources Staff Recognition Award.

Fred Tonnies, pharmacy manager at University Hospital and Clinics, received the 1994 Outstanding Alumni Award from the alumni association at the Saint Louis College of Pharmacy.

**Mizzou Telecom Schedule of Courses for 1995**

The following classes will be offered free of charge to MU faculty and staff. All classes start at 1:30pm and last approximately two hours (sometimes the VoiceMemo class runs a little bit longer).

All classes are held in the basement conference room of the Telecommunications building, located at the corner of College and Ashland.

Class size is limited to ten participants, and you must register in advance to attend. Please call 882-2177 to sign up. Attendees who register at least one week in advance will receive a confirmation letter via campus mail.



**Using the VoiceMemo System Effectively**

MU's VoiceMemo II voice processing system has a lot of capabilities that can greatly improve your office productivity, such as fax publishing, conditional greetings, and the ever-popular "zero-out" option. And of course, it will also function as a telephone answering machine. This course will help you make the most of your voice mailbox, helping you increase your productivity along the way.

- Tuesday, February 21
- Tuesday, March 21
- Tuesday, April 18
- Tuesday, May 16
- Tuesday, June 20
- Tuesday, July 18
- Tuesday, August 15
- Tuesday, September 19
- Tuesday, October 17
- Tuesday, November 21
- Tuesday, December 19



**Telephone Etiquette and the Effective Use of Phone/Voice Mail Features**

The focus of this course is on etiquette. The effective use of phone and voice mail features is discussed only as it pertains to proper phone etiquette (how to properly transfer a call, for example). Participants learn the formal rules of etiquette, how to handle "difficult" callers, how to adapt etiquette to departmental procedures, and more.

- Wednesday, February 15
- Wednesday, March 15
- Wednesday, April 19
- Wednesday, May 17
- Wednesday, June 21
- Wednesday, July 19
- Wednesday, August 16
- Wednesday, September 20
- Wednesday, October 18
- Wednesday, November 15
- Wednesday, December 20

**Using Telephone Features Effectively**

This course focuses on making the most effective use of the various features which are built into your telephone line. The use of both business sets and single-line telephones is covered, though the class is typically modified to suit the needs of its participants.

- Tuesday, February 14
- Tuesday, March 14
- Tuesday, April 11
- Tuesday, May 9
- Tuesday, June 13
- Tuesday, July 11
- Tuesday, August 8
- Tuesday, September 12
- Tuesday, October 10
- Tuesday, November 14
- Tuesday, December 12

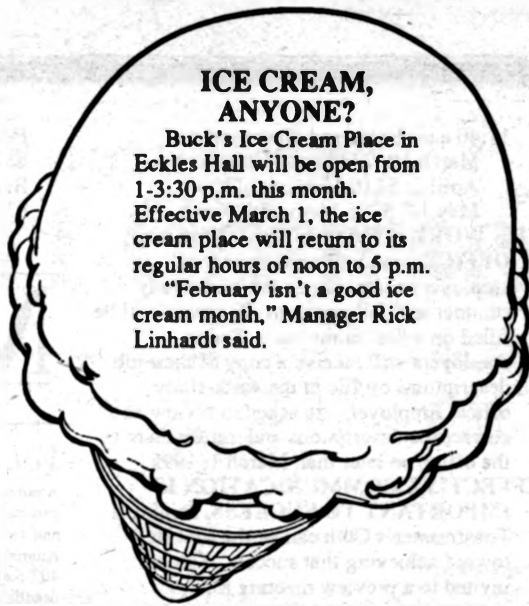


**BENEFIT TO FEATURE SHOJI TABUCHI SHOW**

The Shoji Tabuchi Show will be featured in a benefit performance on March 14, 1995, at the Hearnes Center. Funds from the event, sponsored by Missouri-Arkansas Kiwanis International, will benefit the Pediatric Cardiology program at University Hospital and Clinics Children's Hospital.

"We are so pleased to feature what many consider to be the top family music show in America," says Ray Lansford, event chairman. "This will be a spectacular highlight for Columbia and Missouri, and I encourage everyone to make plans to attend."

Tickets may be reserved by calling 1-800-CAT-PAWS.



**ICE CREAM, ANYONE?**

Buck's Ice Cream Place in Eckles Hall will be open from 1-3:30 p.m. this month. Effective March 1, the ice cream place will return to its regular hours of noon to 5 p.m. "February isn't a good ice cream month," Manager Rick Linhardt said.

**TEAMS COMES TO MIZZOU NEXT WEEK**

More than 200 of the state's top high school students will be on campus next week to compete in Tests of Engineering Aptitude, Mathematics and Science (TEAMS) competition, sponsored by the College of Engineering.

The contest will begin at 8 a.m. on Thursday, Feb. 16, at Memorial Union. Schools accepting invitations range from small rural schools such as Green City R-1 to large suburban schools such as Lee's Summit in the Kansas City area.

The students work together in teams to solve problems and answer questions related to engineering, technology, mathematics and science.

"Today, cooperation and group strategy play important roles in engineering and technology," says Elaine Charlson, MU associate dean of engineering and state TEAMS coordinator. "TEAMS introduces students to these group aspects of engineering work."

Top scoring teams on the state level will advance to national competition.



**Classroom renovations boost A&S teaching environment**

The Christmas season may be a time for students to take some time off between semesters, but work crews from Campus Facilities kept especially busy over the holidays.

Workers from Campus Construction and MU's maintenance department joined forces to refurbish a number of classrooms in the Arts and Science Building.

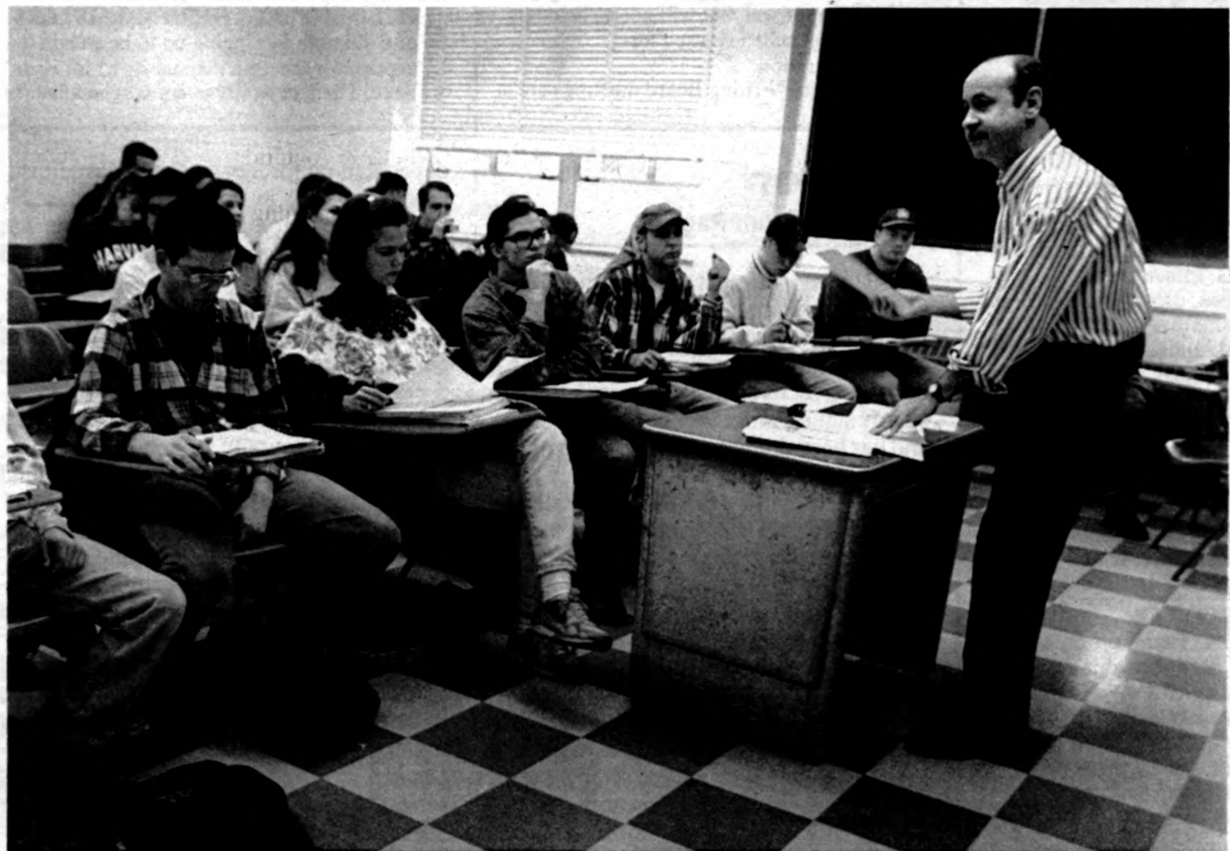
So far, five classrooms on the first and ground floors of Arts and Science have been renovated. Old seats that were bolted to the floor were replaced with new, moveable chairs. The classes also have new floor tile, window blinds and a fresh coat of paint.

Faculty who teach in the upgraded classrooms are happy with the results. The old fixed seating didn't foster an innovative teaching atmosphere in small classes. Foreign language teachers, among others, are especially pleased with the moveable seating. They say the arrangements allow students to get to know each other better and take part in small-group classroom activities.

It's all part of a campus goal to upgrade teaching facilities. The first priority was to upgrade auditoriums, and in recent years five major auditoriums have been renovated. A sixth auditorium, Keller Auditorium in the Geological Sciences Building, is scheduled for renovation this fall.

The Waters Hall Auditorium is a good example of the impact these renovations have had on the teaching of large-lecture classes. Most introductory biology classes are taught there, and lecturers have computer controls right at hand for a VCR, a slide projector and a video disc player. There's a new lighting system and the stage has been lowered so a teacher can walk off the stage and out into the class with a wireless microphone system.

John David, chairman and associate pro-



Pedro Fonseca, assistant professor of romance languages, teaches a Brazilian civilization class in one of the five renovated rooms in the Arts and Science Building.

Nancy O'Connor photo

fessor of biological sciences, says faculty had a big hand in the design of Waters Auditorium. Working with Campus Facilities, MU Academic Support Center, the Arts and Science dean's office and the registrar's office, faculty were able to include their concept of "what they wanted to do in large introductory classrooms. They looked at the neat things they could do if they had the facilities" David says, calling the Waters project "a model" for future renovations.

With the auditorium situation well in

hand, the emphasis has shifts to classrooms. Eight classrooms on the second floor of A&S will be renovated between the winter semester and the first summer session. An additional seven classrooms on the third floor

will be completed by the end of summer. When the work in the Arts and Science Building is completed, crews from Campus Facilities will turn their attention to other major classroom buildings around campus.

**PANIC ATTACK TREATMENT**

The University of Missouri-School of Medicine, Division of Psychiatry is conducting a study of a new investigational medication for the treatment of panic attacks.

If you or someone you know suffers from the following recurrent unexpected panic attacks in which 4 or more of the following symptoms develop suddenly and reach a peak within 10 minutes:

- ✓ Racing and/or pounding heartbeat or chest pressure
- ✓ Shortness of breath or a sensation of smothering
- ✓ Sweating, hot flashes, or chills
- ✓ Fear of dying or doing something uncontrolled
- ✓ Trembling, shaking, numbness, or tingling sensations
- ✓ Feeling dizzy, unsteady, light-headed or faint
- ✓ Nausea or abdominal discomfort

Please call (314) 882-0408

**ARTS AND SCIENCE WEEK 1995: ACHIEVEMENT AND SUCCESS**

The MU College of Arts and Science invites the Columbia community to attend a performance of The University Singers and to preview their upcoming concerts in the nation's capitol.

Monday, February 13, 8:00 p.m., Jesse Hall Auditorium

Free and open to the public

**FROM COLUMBIA TO THE KENNEDY CENTER: THE UNIVERSITY SINGERS**  
David Rayl, Director

Now close to 50 years old, MU's University Singers offers a proud tradition of excellence in choral singing and has been repeatedly recognized as one of the finest university choral ensembles in the country. Most recently the ensemble has been honored with an invitation to perform in Washington, D.C., at the Kennedy Center for the Performing Arts and at Constitution Hall.

A presentation of the Lloyd B. Thomas Lecture and Performance Series, an endowed series that memorializes Lloyd B. Thomas, a distinguished member of the MU Department of Chemistry who for over 55 years inspired thousands of students with his love of learning.

Lloyd B. Thomas  
LECTURE AND PERFORMANCE SERIES  
CHEMISTRY SCHOLARS PROGRAM



# CLASSIFIEDS

## FOR SALE

**CLASSIC OLDER BRICK HOME** on Stewart Road (Old Southwest). Four bedrooms, 2,100 sq. ft., high ceilings, original oak floors and woodwork throughout. Recently renovated. Large yard. Walk to campus. \$139,500. 875-6615.

**MAZDA MX6, LS 1993.** Low mileage. Five-speed. Excellent condition. CD, sunroof, all other options. Black, taupe leather interior. Call Art, 443-4192.

## FOR RENT

**LUXURY TOWN HOUSE** to share with female graduate student. Own bedroom with full bath; fully furnished with many amenities; southwest near MU; no pets and no smoking. Call (314) 687-3507 (no toll) or 442-8962.

**FURNISHED HOME** for rent during sabbatical (July '95 to '96). Walking distance: MU, Boone Hospital, Stephens. Two-story, four-bedroom, quiet, older neighborhood. Single family, non-smokers, no pets. 875-4836.

## SERVICES

**COUNSELING.** Individuals, couples, families, groups. Point-of-service health insurance provider. 20 years' experience. Call Patrick Kane, LCSW, DCSW, 449-0120.

**PHD IN ENGLISH** with 20 years' college teaching and experienced in editing. Will edit books, monographs, dissertations, papers for publication or presentation, proposals, newsletters. Office near campus. Telephone 445-6690.

**COMPUTERIZED TAX PREPARATION.** Taxes prepared professionally at reasonable rates using laser tax software. References available. Confidentiality assured. More than 10-years' experience. Electronic filing available. Call Kellogg Business Services at 445-7557.

**TAX RETURN PREPARATION.** Federal, state, multistate. Clients in 26 states and overseas. 26 years' experience with higher education returns. Call 445-6530 for confidential appointment. New clients — first hour free with this ad.

**COUNSELING/ PSYCHOTHERAPY.** Marital, relationship, personal, educational, vocational. 25 years' experience with faculty, staff, students. Sliding fee scale. Don Eggeman, psychologist, 1205 University Ave. (next to parking garage), Suite 400. 449-6190.

**FREE-LANCE EDITING** by long-time professor, funded author, editor. Books, theses, papers, presentations, grant proposals. Can also brainstorm publishing strategies. Reasonable rates, prompt delivery. 449-5886 evenings.

The Classified Advertising Section is open only to faculty and staff members and retirees. A home phone number is required in all classified ads. No refunds will be given for cancelled ads.

Ads must be typed.

Rates: 30-word maximum \$3.

Publication deadlines:

Feb. 14 deadline for Feb. 23 issue

Feb. 21 deadline for Feb. 30 issue

**Mizzou Weekly Classifieds:** Make your check payable to University of Missouri and send to: *Mizzou Weekly*, 407 Reynolds Center, Attention: Tanya Stitt.

# FOR THE RECORD

The 'For the Record' column gives MU departments and units the opportunity to advertise used or unneeded equipment for sale. There is no charge for this service. Send your notice to John Beahler at 407 Reynolds Center, or call 882-5918.

## THE CAMPUS WRITING PROGRAM

**INVITES FACULTY** to consider offering a writing intensive (WI) course in winter 1996. Proposals must be received by these dates to be reviewed at the following board meeting: Feb. 23, March 23, April 27 and Sept. 1. Winter '96 course proposals received after this date will be considered for WI approval, but will not be listed in the winter schedule used for preregistration.

Campus Writing Board meetings are at

11:40 a.m. Dates and places are:  
March 10: 233 Brady Commons  
April 7: S110 Memorial Union  
May 12: S203 Memorial Union

## THE WORK-STUDY EMPLOYMENT

**OFFICE** soon will send its annual employer request forms for work-study summer and fall positions. Positions will be filled on a first-come basis. Soon, employers will receive a copy of their job descriptions on file in the work-study office. Employers are asked to review and correct the descriptions and return them to the office no later than March 1, 1995.

## EFFECTIVE COMMUNICATION IS

**IMPORTANT TO SUCCESS.** Joining a Toastmaster's Club can be the first step toward achieving that success. You are invited to a preview meeting for prospective members from noon to 1 p.m. on Thursday, Feb. 16. The meeting will be at University Hospital in the lobby conference room next to the restaurant. Call Lynne Hedrick, 882-4865, for more information.

**BOWL FOR FUN AND PRIZES AND HELP BIG BROTHERS/BIG SISTERS** of Columbia by signing up to be a team captain for the 14th Annual Bowl for Kids' Sake. The University event is scheduled for

Feb. 18 and the community-wide event will be Feb. 25. The bowling will happen at Brady Commons. To register, please call 874-3677.

# MIZZOU WEEKLY

Vol. 16

No. 19

A publication of the University of Missouri-Columbia faculty and staff, published every Thursday during the academic year and twice a month during the summer by Publications and Alumni Communication, a department of University Affairs, 407 Reynolds Alumni and Visitor Center, 882-7357. News deadline is noon Thursday the week before publication. Annual subscriptions are available for \$20.

Editor: Susan France Salzer  
Assistant editor: John Beahler  
Staff writers: Sue Richardson, Jim Keltly  
Director of Advertising: Tanya Stitt  
Graphic editor: Nancy Daniel



Printed with soy ink on recycled newsprint containing 90 to 100 percent post-consumer waste.

## Reactor

Continued from Page 1.

MU owns the most powerful nuclear research reactor on any U.S. campus. At 10 megawatts, it is twice as powerful as the one at MIT. The University's reactor is one of only 10 reactors in the country that can supply significant amounts of radioisotopes, and has been doing so since it began operating 27 years ago.

"In the past 15 years, we have been actively supplying radioisotopes for medical purposes because our reactor has been running so reliably," Ketrings says. "Essentially we operate six and one-half days a week, 90 percent of the time, with minimal shut-downs. Our reliability is probably the biggest advantage we have over other reactors."

At least 36,000 nuclear medicine diagnostic procedures are performed daily in the United States. "Now we are seeing a resurgence in the use of radioisotopes to treat diseases; however, we are almost completely

dependent on foreign markets for radioisotopes currently in use," Ketrings says. He notes competition from the Russians has become particularly keen since the Cold War ended.

"They've got a lot of reactors over there, and they're running them on rubles. Then of course they sell their products and services for dollars or yen — real money. But medical people are concerned about the stability of the Russian supply."

For several years, U.S. clinicians and researchers have suggested that the DOE encourage domestic suppliers. In response, the department asked the Institute of Medicine to study isotope production and availability at DOE-funded national laboratories and university reactors.

The United States has been shortsighted in this area, Ketrings says. As it becomes more expensive to meet federal regulatory requirements, he explains, many universities can't afford to keep their reactors running. Other reactors, dependent on state or university subsidies, are failing as alloca-

tions lag behind increased operating costs. To its credit, MURR has been able to generate its own funding, Ketrings says.

"About 25 percent of our support comes from the state, the rest comes from our service and research components. This allows us to keep running and meet our annual operational budget of \$8 million," he says.

Still, if the reactor is to remain the national leader of isotope production, and compete with international markets, it will need federal support to cover additional space, processing equipment and personnel, Ketrings adds.

Although MURR is a showcase for nuclear research worldwide, Ketrings says "we are better-recognized nationally and internationally than we are in our own state."

The reactor is open for public tours from 9 a.m. to 4 p.m. Tuesdays through Fridays. To arrange a tour, call (314) 882-4211.

"We are an international resource," Ketrings says. "We also want our local community to be aware of the good things going on here."

# Check out our new weekend hours

University Pharmacy in the lobby of University Hospital and Clinics has expanded its hours to weekends. The pharmacy now is open 10 a.m. to 4 p.m. Saturday and Sunday.

University Pharmacy can fill new prescriptions and transfer prescriptions, including prescriptions filled at the Green Meadows Pharmacy the first time. And when you call in your refill prescription on Sunday, you'll get a free Tylenol product.

Hours: Monday - Friday ..... 8:30 a.m. - 6:30 p.m.

Saturday - Sunday ..... 10 a.m. - 4 p.m.

Phone number: 882-8600

Park free in the hospital garage when visiting us. Visa/Mastercard/Discover accepted.



# Campus Computing Short Courses

The following non-credit short courses are offered at no charge to MU faculty, staff and graduate students unless otherwise noted. *Registration is required and is done on a first-come, first-served basis.* Participants may be enrolled in **no more than two courses** at one time. To enroll, please call 882-2000. *Note:* This is only a partial list; additional courses will be advertised in future issues of the *Mizzou Weekly*.

#### FOUNDATION OF COMPUTERS

4: FEBRUARY 13 AND 15, 9:00 AM - NOON

Through lecture and hands-on exercises, the student will learn the fundamentals in both IBM and Macintosh platforms of computer hardware, what they do and how they function; different categories of software applications; terminology and basic computer manipulation; and disk and drive preparation for file management. The student will learn to interpret computer advertising and jargon to make educated decisions about purchasing and upgrading. The course will also include a discussion of how computers are linked together in networks through which they can share resources and information. The course concludes with a complete presentation of the University's computing facilities, training and where to get help.

#### INTRODUCTION TO RICEMAIL

3: FEBRUARY 13 (MONDAY), 9:00 AM - NOON

RiceMail is the software that makes it possible for you to communicate by email on the MIZZOU1 mainframe computer. In this course you'll learn how to compose, edit and spell-check email notes and send them to an individual or group of people. You'll also learn to organize your email by sorting it into notebooks, and time-saving methods such as using nicknames in place of full email addresses. Prerequisite(s): Foundation of Computers course (or basic experience with a microcomputer) and a MIZZOU1 ID are required prior to the beginning of the class.

#### CC:MAIL FOR DOS AND WINDOWS (NETWORK-BASED)

2: FEBRUARY 13

cc:Mail training for the DOS and Windows platforms is available through a network-based software program. Interested users can register for a hands-on, self-paced tutorial which they can access from their own computers. Topics covered include starting cc:Mail; reading a note; reading bulletin boards; addressing and sending messages; using the cc:Mail text editor; attaching items; importing text; using the spell checker and graphics editor; replying to and forwarding messages; and archiving and printing messages. A password will be issued to participants which gives them access to this self-paced tutorial for one (1) week from the start date. Prerequisite(s): A cc:Mail ID.

#### INTRODUCTION TO UNIX

SHOWME: FEBRUARY 14 (TUESDAY), 3:30 - 4:30 PM

NEXT: FEBRUARY 15 (WEDNESDAY), 3:30 - 4:30 PM

SOI: FEBRUARY 16 (THURSDAY), 3:30 - 4:30 PM

Each of these one-hour sessions introduces a campus Unix system. Each course requires no previous computing training and will cover: campus resources, using the equipment, accessing the system, user interface, finding documentation, using files, basic electronic mail, and exploration tips. These classes are the prerequisites for any future Unix classes given by Campus Computing. Prerequisite(s): None.



#### INTRODUCTION TO DIAL-UP CONNECTIONS

2: FEBRUARY 15, (WEDNESDAY), 9:00 AM - NOON

This course covers the big picture concerning MU's dial-up access (how to call a University computer from your office or home computer and modem). Goes into detail mostly on the PC side because of the extra complexity involved. If you're going to be installing a modem on a PC or clone, or just want a general "what's involved in dial-up on the MU Campus," this course is for you. Covers port assignments, IRQ's, line settings, etc. Does not specifically cover SLIP. Prerequisite(s): Foundation of Computers or basic hands-on experience with personal computers.

#### INTERNET FINDING AIDS

1: FEBRUARY 16 (THURSDAY), 1:30 - 4:30 PM

2: FEBRUARY 28 (TUESDAY), 1:30 - 4:30 PM

Lost in cyberspace? This is an intermediate course for those who can use gopher, telnet and FTP but don't know where to find the information they need. Participants will learn how to find subject guides to the Internet and learn how to use the finding tools Veronica and Archie. Prerequisite(s): Introduction to the Internet course, Foundation of Computers course, or basic hands-on experience with personal computers, and a MIZZOU1 ID.

## FAX SERVICE

Use the Ellis Library Copy Center for all your professional or personal fax needs. We will even contact you when we receive a fax for you.

**Send: \$2.00 + 25¢ a page**

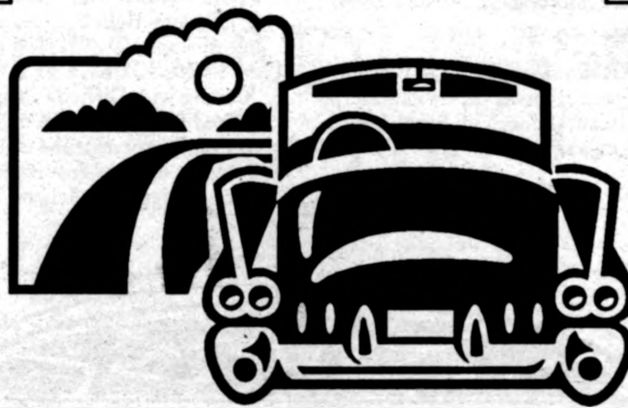
**Receive: \$1.00 and 25¢ a page**

International service available for a slight additional charge.

Sunday.....noon to midnight  
Mon - Thurs.....7:30 a.m. to midnight  
Friday.....7:30 a.m. to 11 p.m.  
Saturday.....9 a.m. to 9 p.m.

**ELLIS LIBRARY COPY CENTER**

Room 115 • Ellis Library • 882-7262



*All cars & trucks look new to us!*

**New or Used, Same Low Rate**

*(with approved credit)*

1/2% off for Payroll Deposit

1/2% off for Checking Acct

**Pre-Approved Vehicle Loans**

**No Prepayment Penalties**

**Same Day Decision**

*(apps in by 2:00—current members only)*

**Limited time offer — see your Loan Officer today!**

*(some restrictions apply)*



Mon. - Thurs. 7:30 am to 5:30 pm  
Friday 7:30 am to 6 pm  
Saturday 9 am to 12:30 pm



1st & Broadway ♦ P.O. Box 1795 ♦ Columbia, Mo. ♦ 65205-1795

Phone: 874-1477 or 1-800-451-1477 Fax: 874-1300

MU Faculty, Staff and families are eligible to join. Call for membership info today!

# CALENDAR

Send calendar items in Campus Mail to *Mizzou Weekly Calendar*, 407 Reynolds Center, by noon Thursday the week before publication. Events are free and open to the public unless otherwise noted.

## Concerts and Plays

### Thursday, Feb. 9

**FINE ARTS SERIES:** The Department of Theater will present *Red Noses*, directed by Elisabeth Hostetter and Sharon Kilarski, at 8 p.m. in the Corner Playhouse. Cost: \$5 all seats. For ticket information, call 882-PLAY.

### Friday, Feb. 10

**FINE ARTS SERIES:** The Department of Theater will present *Red Noses*, directed by Elisabeth Hostetter and Sharon Kilarski, at 8 p.m. in the Corner Playhouse. Cost: \$5 all seats. For ticket information, call 882-PLAY.

**JAZZ FESTIVAL:** MU jazz studies will host the Ninth Annual Jazz Festival Feb. 10-11 in Jesse Auditorium. For more information, call Frederic Hemke at 882-3430.

### Saturday, Feb. 11

**FINE ARTS SERIES:** The Department of Theater will present *Red Noses*, directed by Elisabeth Hostetter and Sharon Kilarski, at 8 p.m. in the Corner Playhouse. Cost: \$5 all seats. For ticket information, call 882-PLAY.

**STUDENT RECITAL:** Melissa Pickens, soprano, and Cassiano Barbosa, tenor, will perform at 5 p.m. in Whitmore Recital Hall. For more information, call 882-2604.

### Sunday, Feb. 12

**CONCERT SERIES:** Boys Choir of Harlem and Blind Boone Highsteppers will perform at 7 p.m. in Jesse Auditorium. For ticket information, call 882-3781.

### Thursday, Feb. 16

**FINE ARTS SERIES:** The Department of Theater will present *Red Noses*, directed by Elisabeth Hostetter and Sharon Kilarski, at 8 p.m. in the Corner Playhouse. Cost: \$5 all seats. For ticket information, call 882-PLAY.

**CONCERT SERIES:** Kansas City Symphony will perform at 8 p.m. in Jesse Auditorium. For ticket information, call 882-3781.

## Courses

### Thursday, Feb. 9

**ENGINEERING EXTENSION:** "Annual Hazardous Material Update" will be offered from 7 a.m.-5 p.m. in St. Louis. Cost: \$195. For information, call Virginia Nettleton at 882-2087.

**HUMAN RESOURCE SERVICES CLASS:** "Desk Manual, Section 1 Part 2" will be offered from 9 a.m.-4 p.m. in 266 Heinkel. To enroll, call 882-2603.

### Friday, Feb. 10

**ENGINEERING EXTENSION:** "Hazardous Materials 181-126F Training, Testing and Certification" will be offered at 7 a.m. in St. Louis. Cost: \$190. For information, call Virginia Nettleton at 882-2087.

**UNIVERSITY EXTENSION:** "Adobe Photoshop Workshop" will be offered Feb. 10 from 7-9 p.m., Feb. 11 from 8 a.m.-5 p.m. and Feb. 12 from noon-4 p.m. in 147 Stanley Hall. For cost and registration information call 882-3598.

**HUMAN RESOURCE SERVICES CLASS:** "Coping with Difficult People" will be offered from 9 a.m.-4 p.m. in the conference room of the Columbia Career Center at 4203 S. Providence Road near Rock Bridge High School. To enroll, call 882-2603.

**CAMPUS COMPUTING COURSE:** "Introduction to Ricemail" will be offered from 1:30-4:30 p.m. in 266 Heinkel. To enroll, call 882-2000.

### Monday, Feb. 13

**HUMAN RESOURCE SERVICES CLASS:** "A Winning Balance in a Diverse Workforce" will be offered from 9 a.m.-4 p.m. in Memorial Union S203. For enrollment information, call 882-2603.

**CAMPUS COMPUTING COURSES:** "Foundation of Computers" will be offered from 9 a.m. - noon Feb. 13 in 226 Heinkel and from 9 a.m. -noon Feb. 15 in 266 Heinkel. "ccMail for DOS and Windows (Network-Based)" will be offered as a computer tutorial. To enroll, call 882-2000.

### Tuesday, Feb. 14

**CHILDBIRTH CLASSES:** "Beginning Childbirth" will be offered from 7-9 p.m. on Tuesdays through March 28 in the seventh-floor classroom at Ellis Fischel Cancer Center. Cost: \$45. To register, call 882-6973.

**CAMPUS COMPUTING COURSES:** "Introduction to the Internet" will be offered from 1:30-4:30 p.m. in 266 Heinkel. "Introduction to Unix - Showme" will be offered from 3:30-4:30 p.m. in 226 Heinkel. "Introduction to Ricemail" will be offered from 9 a.m.- noon in 266 Heinkel. To enroll, call 882-2000.

### Wednesday, Feb. 15

**HUMAN RESOURCE SERVICES CLASS:** "Team Building" will be offered from 1:30-4:30 p.m. in Memorial Union S303. For enrollment information, call 882-2603.

**CAMPUS COMPUTING COURSES:** "Introduction to the Internet" will be offered from 1:30-4:30 p.m. in 266 Heinkel. "Introduction to Unix - Next" will be offered from 3:30-4:30 p.m. in 226 Heinkel. "Introduction to Dial-up Connections" will be offered from 9 a.m. - noon in 226 Heinkel. To enroll, call 882-2000.

### Thursday, Feb. 16

**CAMPUS COMPUTING COURSE:** "Internet Finding Aids" will be offered from 1:30-3:30 p.m. in 266 Heinkel. "Introduction to Unix - SGI" will be offered from 3:30-4:30 p.m. in 226 Heinkel. "Introduction to WordPerfect 5.1 for DOS" will be offered from 1:30-4:30 p.m. in 266 Heinkel. To enroll, call 882-2000.

## Exhibits

**BINGHAM GALLERY:** The Annual Graduate Student Exhibition will be on display through Feb. 10 in the gallery. The Annual Faculty Exhibition will be on display Feb. 13 through March 10. A reception will be held from 4-6 p.m. Feb. 17. The gallery, open from 10 a.m.-4 p.m. weekdays, is in the Fine Arts Building.

**BRADY COMMONS GALLERY:** The work of Christine Doerr will be on display through Feb. 9. "Black History Month Art Exhibit" will be on display in the gallery Feb. 10-23. "The Ballot: Defense of a Free People" will be on display on the first-floor of Brady Commons through Feb. 28. "Laying the Foundations: Legacies of Douglass, Washington and DuBois" will be on display on the ground floor of Brady Commons through Feb. 28. The Brady gallery, located in 203 Brady Commons, is open from 10 a.m.-5 p.m. weekdays.

**ELLIS LIBRARY:** "Not Your Typical Tuscan: An African-American View of Florence, Italy" will be on display through Feb. 28 in Ellis Library.

**LAW LIBRARY:** "Reflections on 1895: The Legal Climate" will be on display through Feb. 28. The Law Library, located in Hulston Hall, is open from 8 a.m.-10 p.m. Monday through Thursday and 8 a.m.-6 p.m. Friday and Saturday.

**JESSE HALL:** "Moving up the Highway of Freedom: Legacies of Douglass, Washington and DuBois" will be on display through Feb. 28 in Jesse Hall.

**MUSEUM OF ANTHROPOLOGY:** The museum, located in Swallow Hall, is open from 9 a.m.-4 p.m. weekdays.

**MUSEUM OF ART AND ARCHAEOLOGY:** "Isms and Others in the Twentieth Century III" and "Expressions of Africa: Selections from the Permanent Collection" are on display. "Africa Through the Eyes of Women Artists" will be on display through March 26. The museum, in Pickard Hall, is open from 9 a.m.-5 p.m. Tuesday through Friday and noon-5 p.m. Saturday and Sunday.

**ROGERS GALLERY:** The gallery, located in 142 Stanley Hall, is open from 8:30 a.m.-4 p.m. weekdays.

**STATE HISTORICAL SOCIETY:** "Edward S. Curtis: The North American Indian" will be on display in the gallery through March 15. "Carl Gentry (1888-1976) Oils and Watercolors" will be on display in the corridor through March 15. "Decades: 1894-1964 Editorial Cartoons" are also on display in the corridor. The gallery is open 8:30 a.m.-4 p.m. weekdays. The corridors are open from 8 a.m.-4:30 p.m. weekdays and 9 a.m.-4:30 p.m. Saturday.

**WESTERN HISTORICAL MANUSCRIPT COLLECTION:** "Columbia's Black Heritage Past and Present" will be on display through Feb. 10 in 23 Ellis Library.

## Films

### Thursday, Feb. 9

**BLACK HISTORY MONTH FILM:** Early black-and-white films will be shown at 7 p.m. in the Columbia Community Recreation Center at the corner of North Providence Road and Wilkes Boulevard. For more information, contact Bill Thompson or Wynna Elbert at 874-7460.

**AFRICAN WOMEN IN FILM AND VIDEO SERIES:** *Yaaba* will be shown at 7:30 p.m. in Pickard Hall, Museum of Art and Archaeology. Call Christine Neal, 882-3591, for more information.

### Friday, Feb. 10

**MSA/GPC FILM:** *Killing Zone* will be shown at 7 and 9:30 p.m. in Ellis Auditorium. Cost: \$2 in advance, \$2.50 at the door.

### Saturday, Feb. 11

**MSA/GPC FILM:** *Killing Zone* will be shown at 7 and 9:30 p.m. in Ellis Auditorium. Cost: \$2 in advance, \$2.50 at the door.

### Monday, Feb. 13

**MSA/GPC FILM:** *Bonnie and Clyde* will be shown at 8 p.m. in Ellis Auditorium. Cost: \$1.50.

### Thursday, Feb. 16

**AFRICAN WOMEN IN FILM AND VIDEO:** *Quartier Mozart* will be shown at 7:30 p.m. in Pickard Hall.

## Lectures and Seminars

### Thursday, Feb. 9

**LUNCHTIME CONVERSATIONS ABOUT WRITING:** Bob Bender, professor of English, will present "Lurching Toward the Paperless Classroom: Computers and WI Teaching" from 11:45 a.m.-12:45 p.m. in 325 GCB.

**WOMEN'S CENTER PROGRAM:** "How to Treasure Yourself When Other People Are Trashing You" will be presented at noon in 229 Brady. With questions, call 882-6621.

Come on in . . .


## Open Club Day

We're opening our doors to everyone  
on **February 8th and 20th!**

Join us **for lunch** from 11:30 a.m. to 1:30 p.m.

**Dine at the University Club without a membership.**

Don't miss this opportunity to experience the  
**delicious food and great service** at the



Located in the Reynolds Alumni Center, across from Jesse Hall.

Please call (314) 882-0844 for reservations.  
Cash and Credit Cards accepted (Visa, MasterCard and Diner's Club)

**WORK-STUDY STUDENT WORKSHOP:**  
"Building Marketable Skills Through Your Work-Study Job" will be offered from 3:40-4:30 p.m. in 220 Noyes Hall. To register, call 884-6217.

**CLASSICAL STUDIES/ANCIENT STUDIES:** Occasional papers will be presented at 4 p.m. in S207 Memorial Union.

**ENVIRONMENTAL ENGINEERING SEMINAR:** Edward E. Little of the National Biological Survey will present "Ozone Depletion and UVB Radiation: Implications for Temperate North America" from 7:30-9 p.m. in S203 Memorial Union.

**Friday, Feb. 10**

**NEWMAN LECTURE:** Sandra Schneiders of the Jesuit School of Theology at Berkeley, will present "Faith and Feminism: The Struggle for an Inclusive Church" at 7:30 p.m. at the Newman Center, 701 Maryland Avenue. With questions, call 449-5424.

**Saturday, Feb. 11**

**WOMEN'S CENTER WORKSHOP:** "Women in Relationships" will be presented from 11 a.m. to noon in 229 Brady. Registration is required, call 882-6621.

**Sunday, Feb. 12**

**PEACEWORKS' SALON:** Teresa Molina will present "Bridging the Gap Between the Homosexual and Heterosexual Communities" at 6:30 p.m. in the Peace Nook's lounge. For more information, call 875-0539.

**Monday, Feb. 13**

**WOMEN'S CENTER PROGRAM:** "The Dating Game: Patterns of Lesbian Courtship" will be presented at 7 p.m. in 229 Brady. With questions, call 882-6621.

**Tuesday, Feb. 14**

**PHARMACOLOGY RESEARCH SEMINAR:** Yongmei Chen, graduate pharmacology research assistant, will present "Early Gene Expression After Oxidative Stress" at 11:40 a.m. in room M558 Medical Sciences Building.  
**TELECOMMUNICATIONS:** "Using Telephone Features Effectively" will be offered from 1:30-3:30 p.m. in the basement conference room of the Telecom Building. To register, call 882-2177.

**Wednesday, Feb. 15**

**MIDDAY GALLERY TALK:** Cameline Consort of Early Instruments, will present "Uncommon Sound: Music Made for Baroque, Renaissance, Medieval and Modern Ears" at 12:45 p.m. at the Museum of Art and Archaeology, Pickard Hall.

**TELECOMMUNICATIONS:** "Telephone Etiquette and the Effective Use of Phone/Voice Mail Features" will be offered from 1:30-3:30 p.m. in the basement conference room of the Telecom building. To register, call 882-2177.

**ARCHAEOLOGICAL LECTURE:** Tasos Tanoulas, Archaeological Institute of America Kress Lecturer, will present "The Propylaea of the Athenian Acropolis from Antiquity to Our Day" at 5:30 p.m. in room 106 Pickard Hall. A reception will be held at 5 p.m.

**WOMEN'S CENTER WORKSHOP:** "Identity and Community: Lesbian and Bisexual Undergraduate Women" will be presented from 7-9:30 p.m. in 229 Brady. Registration is required, call 882-6621.

**Thursday, Feb. 16**

**WOMEN'S CENTER PROGRAM:** "So What Now," one woman's account of surviving physical and sexual abuse as a child, will be presented at noon in 229 Brady. With questions, call 882-6621.

**Friday, Feb. 17**

Human Development and Family Studies Colloquium: Jean Ispa from the Department of Human Development and Family Studies will present "Mothers' and Preschool Teachers' Childrearing Goals: Russia and the United States Compared" at 3:30 p.m. in 209 Gynn Hall. A reception will follow.

**Wednesday, Feb. 15**

**PATIENT AND FAMILY SUPPORT GROUP:** Group will meet from 1-2 p.m. in the fourth-floor lounge of Ellis Fischel Cancer Center. For more information, call 882-7373.

**Thursday, Feb. 16**

**SHARE (Support Has A Reinforcing Effect):** Group will meet from 7-8:30 p.m. on the first Thursday of each month in the ground-floor dining room of Ellis Fischel Cancer Center. For more information, call 882-3324.

**HEARTS FOR LIFE:** Group will meet at 7 p.m. in the Main Street Conference Room at University Hospital and Clinics. For more information, call 882-1081.

**Special Events**

**Thursday, Feb. 9**

**WELLNESS PROGRAM:** "De-Light Yourself" a nicotine dependency program, will be offered from 3-5 p.m. on Thursdays at the Health Information Center in Columbia Mall. Assessment cost: \$3. To make an appointment, call 882-6565.

**Friday, Feb. 10**

**BLACK HISTORY MONTH PANEL DISCUSSION:** "The Impact of Managed Care on Minority Physicians and the Underserved" will be held at 7 p.m. in Acuff Auditorium, MA 217 Medical Science Building.

Please see CALENDAR on Page 8.

**It's not too late to get grrreat seats for:**

**RED NOSES**

Feb 9-11/16-19

*P.S. YOUR CAT IS DEAD*

Feb 23-25/Mar 2-5

**NOBODY DOESN'T LIKE HARVEY SCHWARTZ**

Mar 30-Apr 1/6-9

**THE ROVER**

Apr 20-22/27-30

For Tickets Call the *Rhynsburger Theatre*

Box Office at

**882-PLAY**

MU Department of Theatre

**Meetings**

**Thursday, Feb. 9**

**STAFF COUNCIL:** Group will meet at 1:15 p.m. in S203 Memorial Union.  
**FACULTY COUNCIL:** Group will meet at 3:40 p.m. in S110 Memorial Union.

**Sunday, Feb. 12**

**NUVOICE:** Group will meet at 1 p.m. in the seventh-floor classroom of Ellis Fischel Cancer Center. For more information, call 882-7373.

**MU Recreational Services' Recreational Sports Camp Spring Break '95 Edition**

For: Boys & Girls, 7 - 12 years old

Cost: \$15 per child per day

(Camp insurance included in fee)

Where: Student Recreation Center

Time: 8:45 am - 4:15 pm Monday - Thursday

(Adult-Supervised Play: 7:30 - 8:45 am and/or

4:15 - 5:30 pm - No Extra Charge)

Dates : Monday - Thursday

Spring Break: March 13, 14, 15 & 16, 1995

No Camp on Friday, March 17

**Registration Deadline: Wednesday, March 8**

Register in 320 Student Recreation Center

For More Information: Marshall or Diane, 882-2066

**Where Everyone's a Winner**

MU Recreational Services 320 SRC 882-2066 Student Affairs

**Now Stocking FORMATTED Diskettes at Sweet Prices!**

|  |   |
|--|---|
| STK #0136<br>3-1/2"<br>DOUBLE Density<br>IBM Formatted<br>\$4.54/Box | STK #0136M<br>3-1/2"<br>DOUBLE Density<br>MACINTOSH Formatted<br>\$4.54/Box |
| <b>KAO</b><br>(pronounced kou or cow)                                |   |
| <b>FORMATTED Diskettes</b>   |   |
| STK #0137I<br>3-1/2"<br>HIGH Density<br>IBM Formatted<br>\$5.24/Box  | STK #0137M<br>3-1/2"<br>HIGH Density<br>MACINTOSH Formatted<br>\$5.24/Box   |
| STK #0138I<br>5-1/4"<br>HIGH Density<br>IBM Formatted<br>\$3.41/Box  |   |

**General Stores:**

We've Got Sweet Savings Waiting For You.

**882-6906**

## Calendar

Continued from Page 7.

### Saturday, Feb. 11

**HEALTH SCREENING:** Exercise fitness test will be offered from 8 a.m.-4 p.m. at the Community Room in Columbia Mall. Cost: \$5. To make an appointment or for more information, call 882-6565.

**HEALTH SCREENING:** Cholesterol screening will be offered from 8 a.m. - noon at the Health Information Center in Columbia Mall. Cost: \$20, \$14 and \$8 depending on type of screening. For more information or to make an appointment, call 882-6565.

**BLACK HISTORY MONTH EVENT:** Storytelling by Evester Roper will begin at 2:30 p.m. in the Friends Room of the Columbia Public Library.

### Monday, Feb. 13

**HEALTH SCREENING:** "Sweetheart Screenings" will be offered from 4-7 p.m. at Ellis Fischel Cancer Center. Ladies who schedule a breast exam during Cancer Screening Service's special February hours will receive for their favorite man a certificate for a free prostate exam. Cost: \$75. To schedule an appointment or for information, call 882-8511.

**NUTRITION AND FITNESS:** "For the Love of Chocolate" will be offered at 12:30 p.m. at the Health Information Center in Columbia Mall.

### Tuesday, Feb. 14

**HEALTH SCREENING:** Body composition screening will be offered from 4-6 p.m. at the Health Information Center in Columbia Mall. Cost: \$3. To schedule an appointment or with questions, call 882-6565.

### Wednesday, Feb. 15

**BLACK HISTORY MONTH EVENT:** Blood pressure and cholesterol screenings will be offered from 2-4 p.m. at the Black Culture Center, 823 Virginia Avenue. Blood pressure screening is free, cholesterol screenings: \$7.

### Thursday, Feb. 16

**HEALTH SCREENING:** "Sweetheart Screenings" will be offered from 4-7 p.m. at Ellis Fischel Cancer Center. Ladies who schedule a breast exam during Cancer Screening Service's special February hours will receive for their favorite man a certificate for a free prostate exam. Cost: \$75. To schedule an appointment or for information, call 882-8511.

**WELLNESS PROGRAM:** "De-Light Yourself," a nicotine dependency program, will be offered from 3-5 p.m. on Thursdays at the Health Information Center in Columbia Mall. Assessment cost: \$3. To make an appointment call 882-6565.

## Sports

### Saturday, Feb. 11

**SWIMMING:** Tigers will meet Iowa State at 1:30 p.m. at home.

**MEN'S BASKETBALL:** Tigers meet Oklahoma State at home.

### Wednesday, Feb. 15

**WRESTLING:** Tigers will grapple with Nebraska at 7:30 p.m. at the Hearnes Center.

## Parking & Transportation Services

Turner Ave. Garage, Level 2  
882-4568

Phase II of the Bicycle Rack Installation Project has been completed. Anyone with suggestions on where additional racks are needed may call our office at 882-4568.

# Snow Removal

28 miles of snow-covered sidewalks.  
7 miles of snow-covered driveways.  
Over 60 snow-covered parking lots for 17,000 cars.

The Grounds Department faced this challenge when MU was hit with a record 19.7" snowfall on January 19th. In fact, this is the challenge the Grounds Department faces any time snowy weather hits mid-Missouri. The dedicated grounds crews work around the clock to remove snow and ice and to make the campus safe and accessible as soon as possible.

MU Grounds Department meets the challenge.

This Valentine's Day show them your warmest wishes with a 9-inch, heart shaped brownie or cookie, decorated with a personal message.

**\$6.49 + tax**

Your packaged brownie or cookie will have a pink border and white writing for \$6.49 plus tax. Please keep your message less than 15 letters. All orders must be prepaid by Feb. 10 and picked up on Feb. 14.

**Order forms and detailed instructions are available from cashiers at the following locations:**

- Blair Oasis
- Corner Copia (Brady Commons)
- Hitt St. Market
- Jesse Hall Snack Bar
- Lewis & Clark Snack Bar
- Union Cafe

**Dining SERVICES**  
CAMPUS  
The Flavor of Mizzou

University Libraries  
University of Missouri

### Digitization Information Page

Local identifier                      MizzouWeekly(print)

### Source information

Format                                      Newspaper  
Content type                                Text with images  
Source ID                                   Duplicate copies University Archives weeded out  
Notes

### Capture information

Date captured                              July-December, 2022  
Scanner manufacturer                      Plustek OpticBook  
Scanner model                                A300 Plus  
Scanning system software                    Book Pavilion  
Optical resolution                            600 dpi  
Color settings                                8 bit grayscale for majority of pages;  
    24 bit color for color illustrations/portraits/photographs  
File types                                      tiff  
Notes

### Derivatives - Access copy

Compression                                Tiff: LZW compression  
Editing software                              Adobe Photoshop 2022  
Resolution                                    600 dpi  
Color    same as captured  
File types                                      pdf created from tiffs  
Notes    Images cropped, straightened, and brightened.