



Mizzou Advantage

University of Missouri

One Health, One Medicine

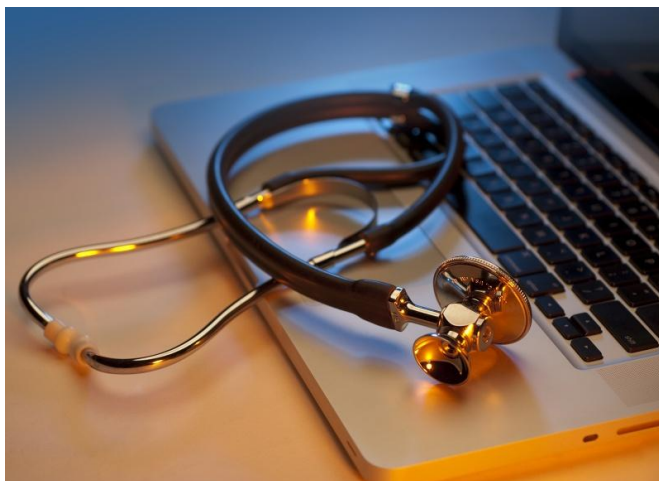
MU offers unmatched opportunities for collaboration in animal and human health. It is Missouri's major public research university with the state's only College of Veterinary Medicine; Colleges of Agriculture, Food and Natural Resources, Engineering and Human Environmental Sciences; Bond Life Sciences Center; Schools of Medicine, Nursing and Health Professions; and the most powerful university research reactor in the country. The initiative also connects with research and instruction in health care delivery, policy, business models, medical ethics and the culture of healthy living.

Examples of MU's One Health assets are:

- Thompson Center for Autism and Neurodevelopmental Disorders
- MU Interdisciplinary Center on Aging
- Tiger Place, an "aging-in-place" resource for senior citizens
- Nanopharmaceutical research
- International Institute of Nano and Molecular Medicine
- National Swine Resource and Research Center
- Research Animal Diagnostic Laboratory
- Engineering school interface with medicine
- Comparative Ophthalmology and Neurology
- Rat Resource and Research Center
- Biodesign and Innovation Program
- Healthy Lifestyles Consortium, focusing on obesity research
- Center for Applied Research and Environmental Systems
- MU Research Reactor
- Radiopharmaceutical Sciences Institute
- Life Science Business Incubator

MU's research and services in the area of One Health, One Medicine affect our lives in a variety of ways:

- Researchers at the Comparative Orthopaedic Laboratory performed the first-ever surgeries to regenerate damaged tissues in dog knees. Based on their success, this procedure is now ready for human clinical trials.
- The Research Center for Human-Animal Interaction is conducting groundbreaking research into the human-animal bond and its impact on health.
- MU is a member of the National Cancer Institute's prestigious Comparative Oncology Trails Consortium.
- MU and Broad Institute researchers discovered the genetic mutation responsible for degenerative myelopathy (DM) in dogs, the same mutation that causes ALS (commonly known as Lou Gehrig's Disease) in humans. Scientists now use information about dogs with DM to help identify cures for ALS.
- MU researchers have an opportunity to play a critical part in the nation's effort against bio- and agro-terrorism with the completion of the new Regional Biocontainment Laboratory on the MU campus.
- MU is one of only five NIH-sponsored National Botanical Research Centers.
- The Veterinary Medical Diagnostic Lab provides in-depth laboratory diagnostic support to veterinary practitioners, livestock and poultry industry interests, companion animal interests, wildlife conservationists, state and regulatory officials, and researchers. The laboratory serves Missouri's 114 counties and surrounding states.



To learn more, visit MizzouAdvantage.missouri.edu or contact Facilitator Carolyn Henry at henryc@missouri.edu.