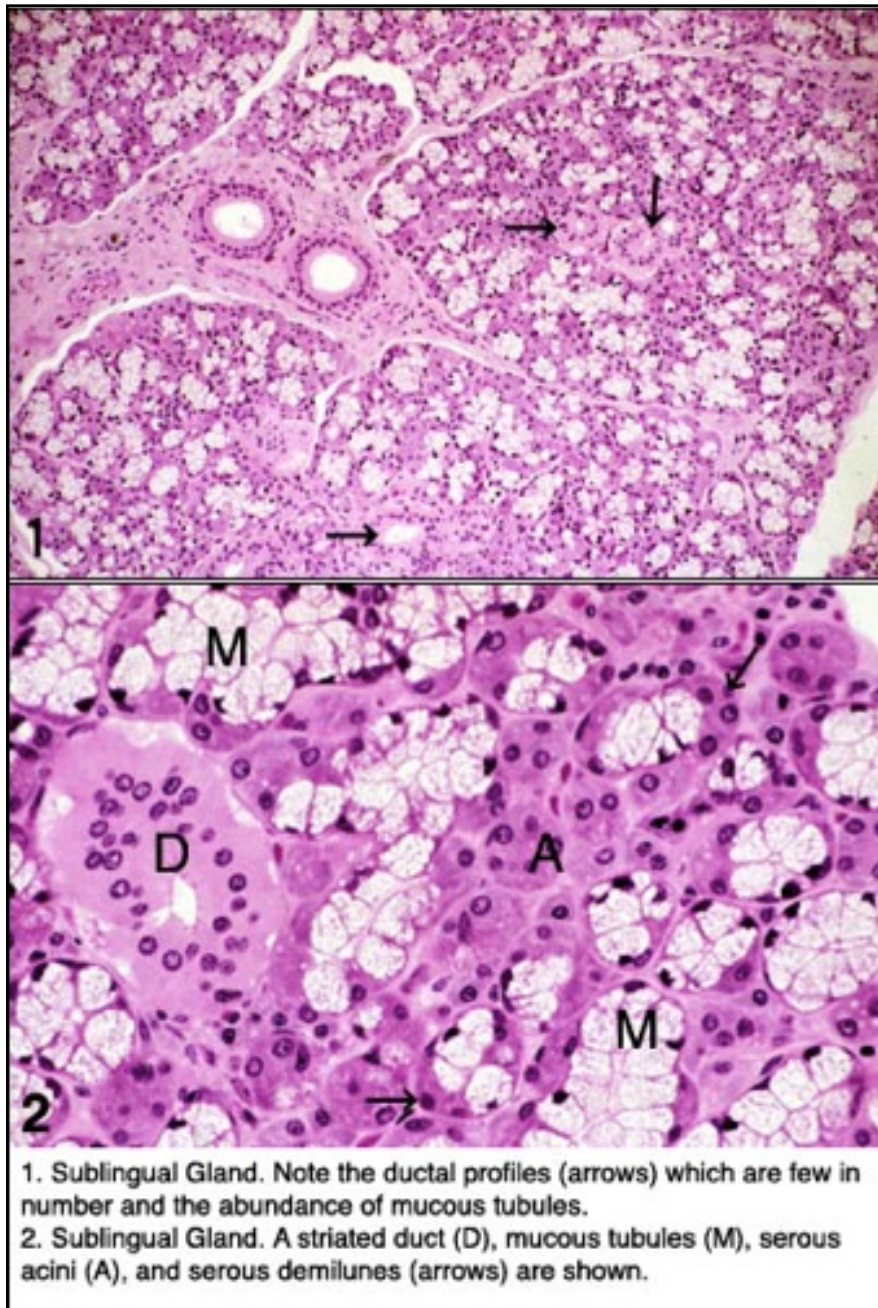


Sublingual Glands



The sublingual is a composite gland, formed by a number of individual glands of variable size. Each gland opens independently onto the floor of the mouth or into the excretory ducts of the submandibular gland. The capsule is not well defined, although septa are present. It is a mixed compound tubuloacinar gland with most of the secretory units being mucous. Serous cells are, for the most part, arranged as demilunes. Myoepithelial cells are found in relation to the secretory units. Segments of the intralobular duct system are short and not as readily seen as they are in the other two major salivary glands.