



Demographic & Socio-Economic Trends in Johnson County

**Warrensburg
August 21, 2007**

**Tracy Greever-Rice, Ph.D.
Associate Director
Office of Social & Economic Data Analysis
University of Missouri--Columbia**



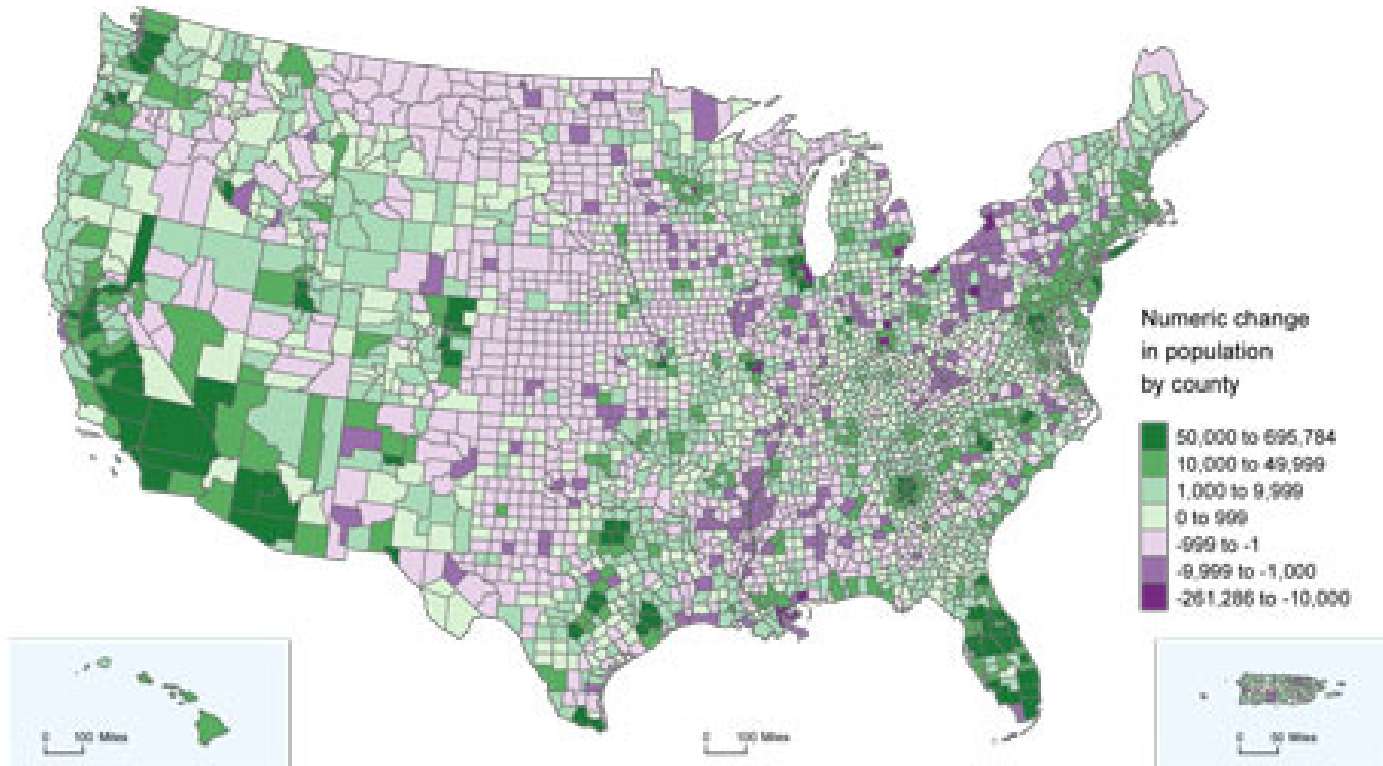
Overview

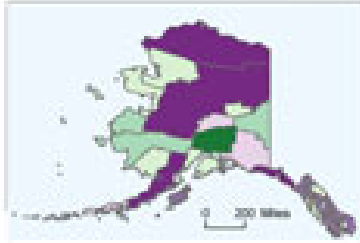
- Big Trends – growth, economy, aging, immigration
- Emerging Characteristics in Johnson County
 - Demographics
 - Socio-economic Status
 - Economic Trends
- New Forms of Information (ACS)
- Discussion

WWW.OSEDA.MISSOURI.EDU
WWW.MCDC2.MISSOURI.EDU

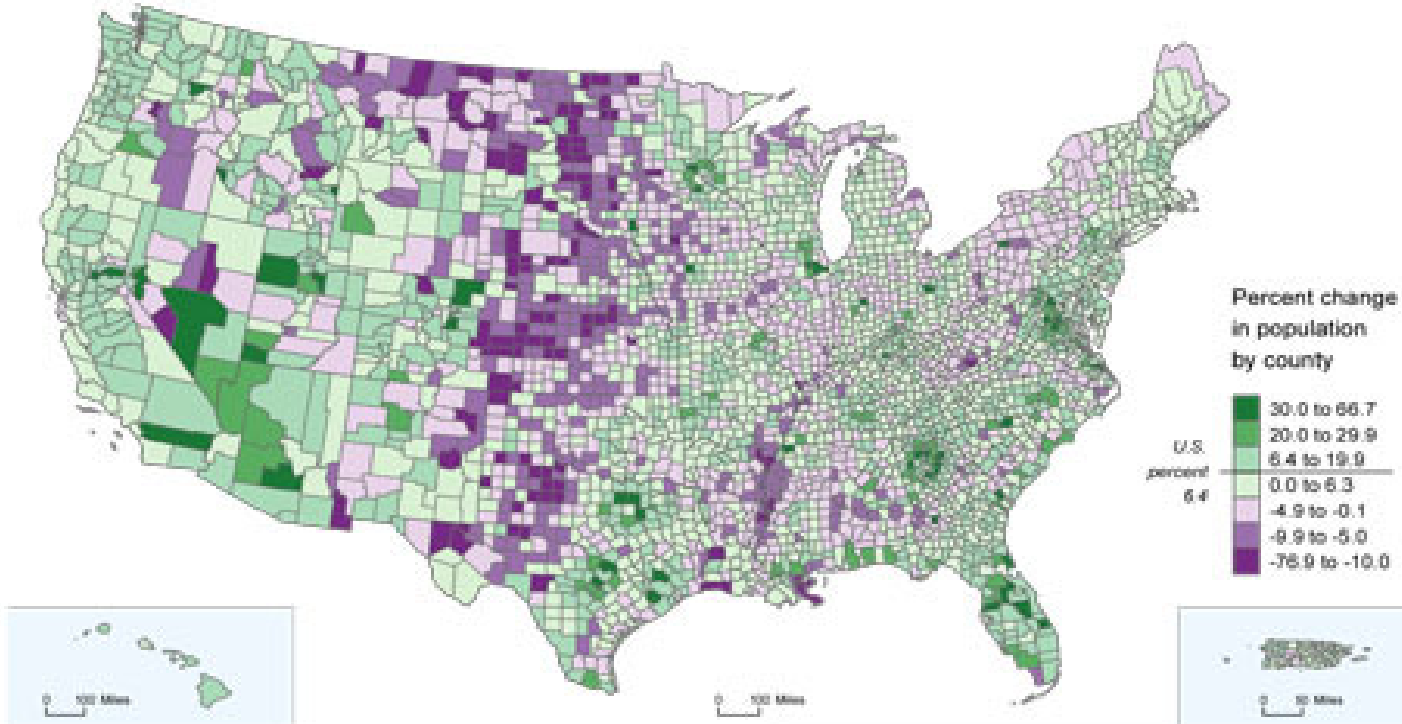


**Numeric Change in Population for Counties
and Puerto Rico Municipios: April 1, 2000 to July 1, 2006**



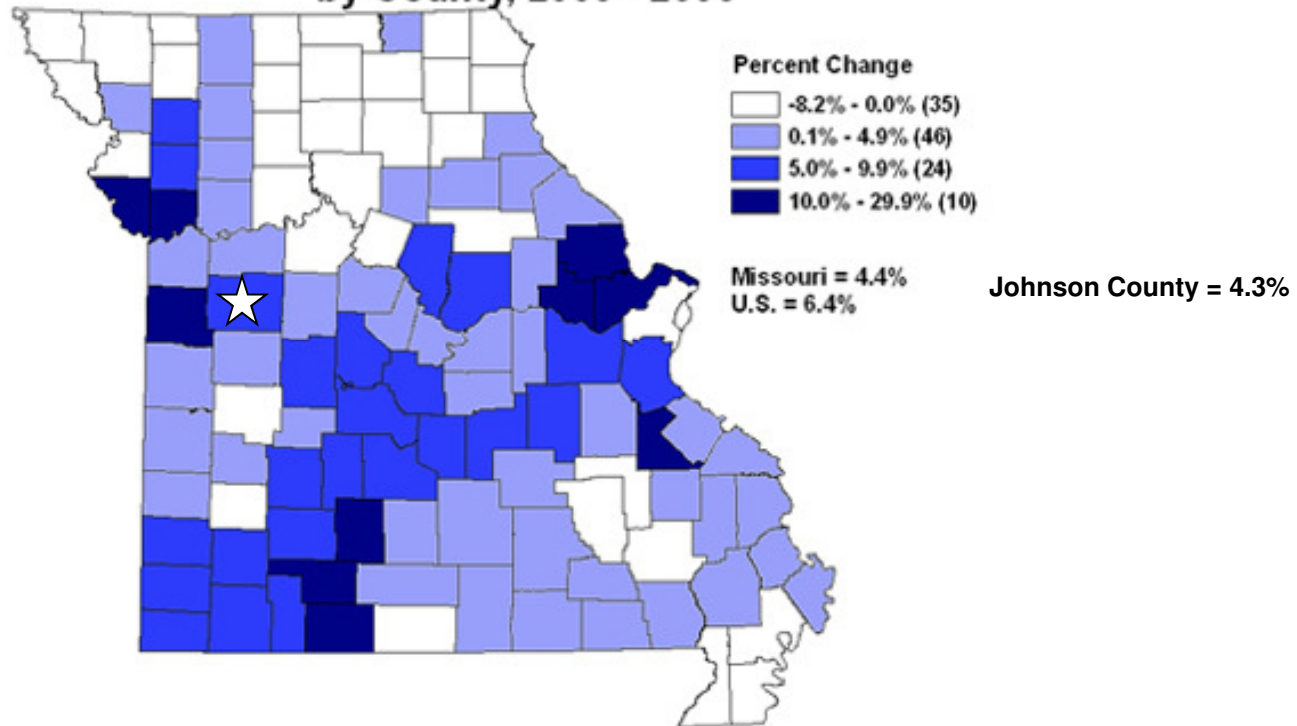


Percent Change in Population for Counties and Puerto Rico Municipios: April 1, 2000 to July 1, 2006



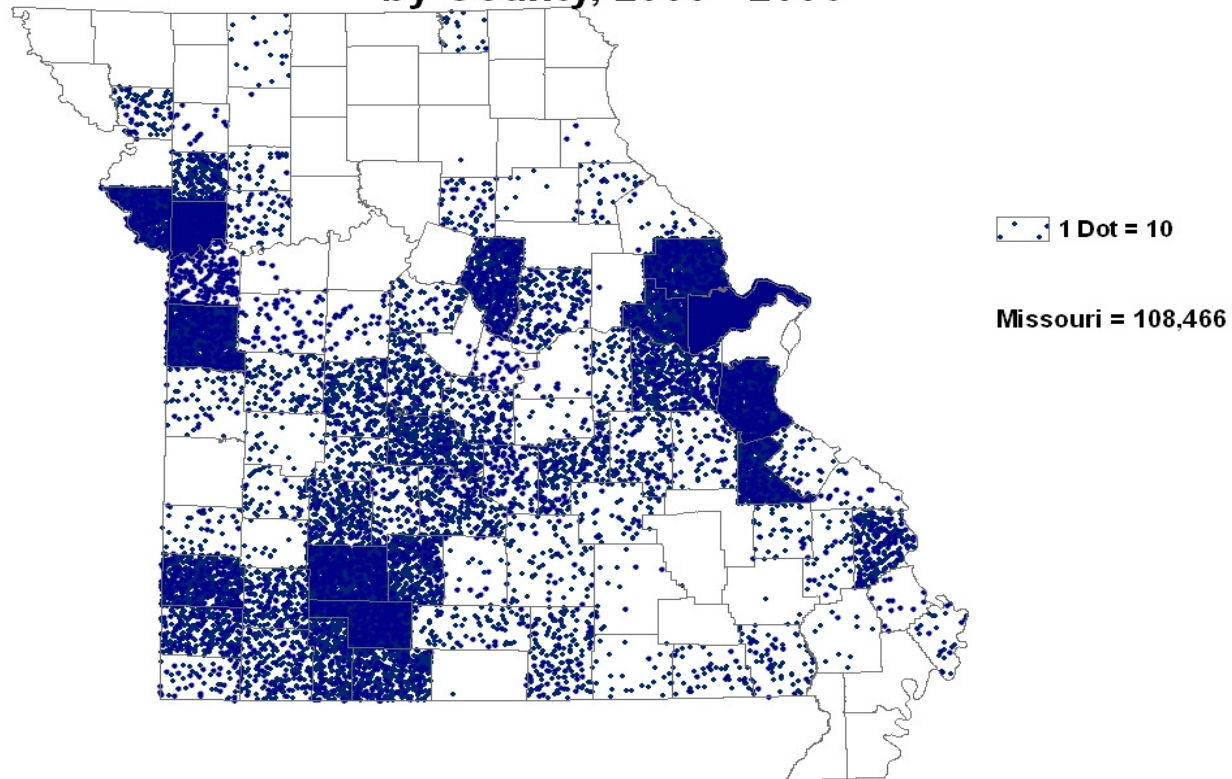
Source: U.S. Census Bureau, Population Estimates Program, 2006

Percent Change in Missouri Population by County, 2000 - 2006



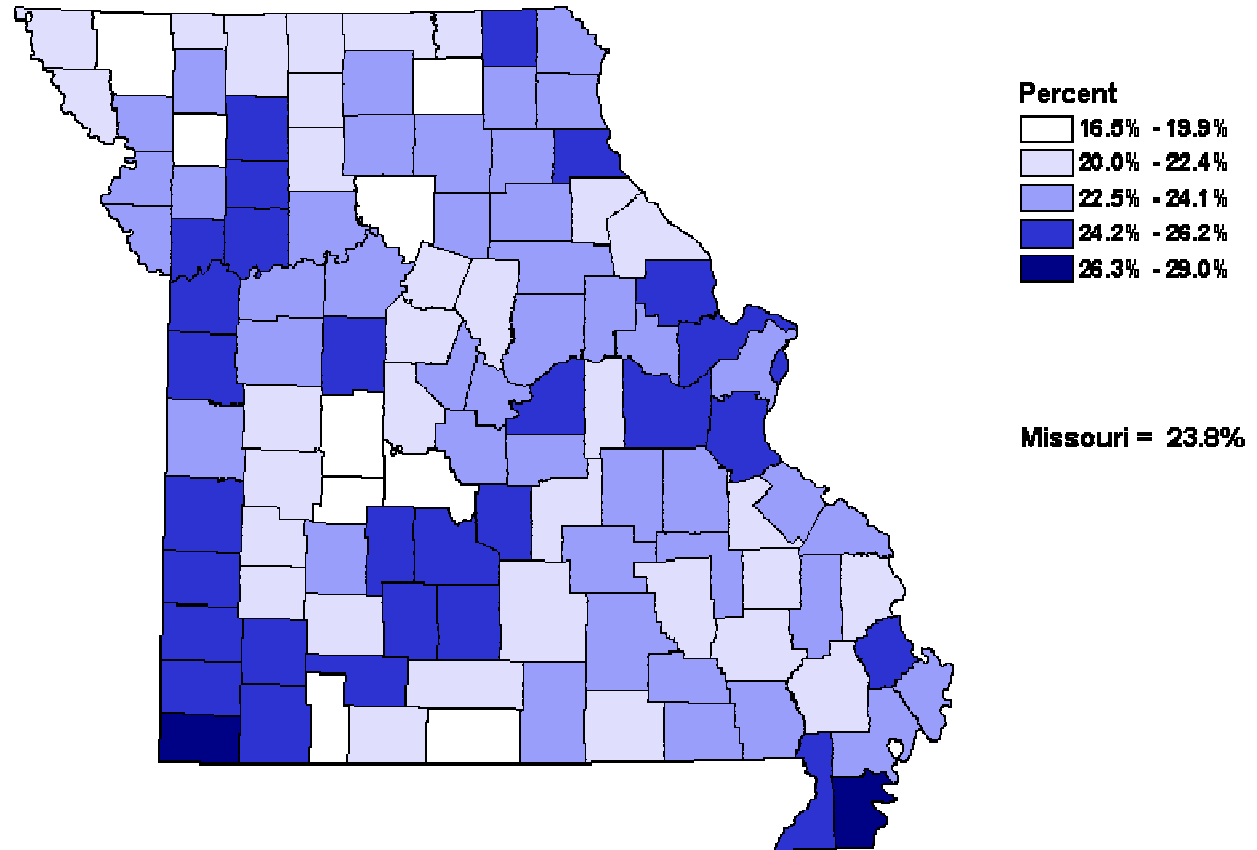
Source: USDC, Bureau of the Census, Federal State Cooperative for Population Estimates
Prepared by: University of Missouri Extension, Office of Social and Economic Data Analysis - (OSED)A
in collaboration with the Missouri Census Data Center (MCDC)
Map Generated on 22March2007

Net Migration of Missouri's Population by County, 2000 - 2006



Source: USDC, Bureau of the Census, Federal State Cooperative for Population Estimates
Prepared by: University of Missouri Extension, Office of Social and Economic Data Analysis - (OSEDA)
Map Generated on 28June2007

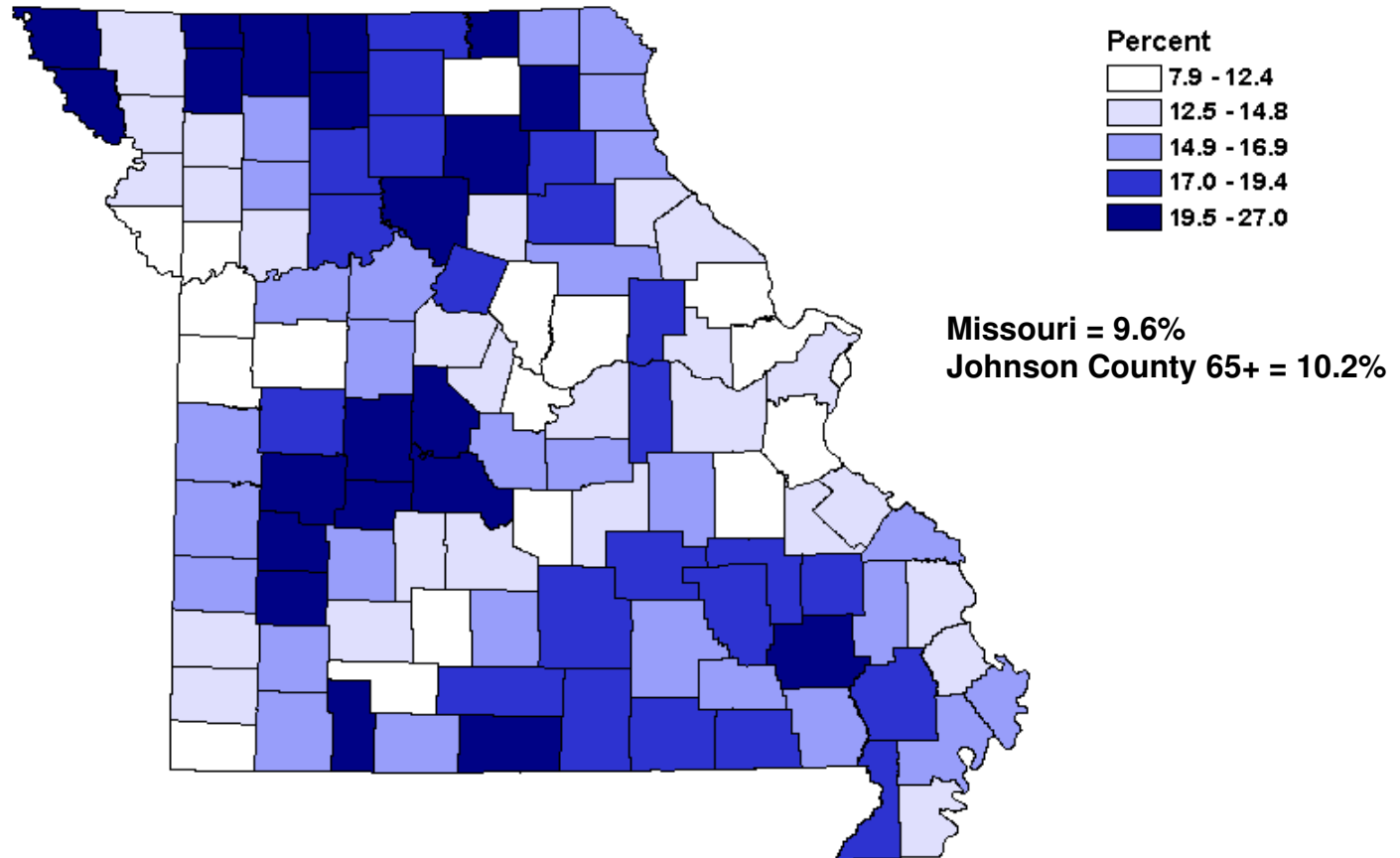
Child Population Under 18 as a Percent of Total Population, 2005



Johnson County
< 18 = 23.2
< 18 Minority = 13.1
< 18 LEP = 0.97

Source: Missouri Office of Administration, Budget and Planning
Prepared by: University of Missouri Extension, Office of Social and Economic Data Analysis (OSEDA)
Map Generated on: 11.13.2006

Percent of Population 65+, 2005

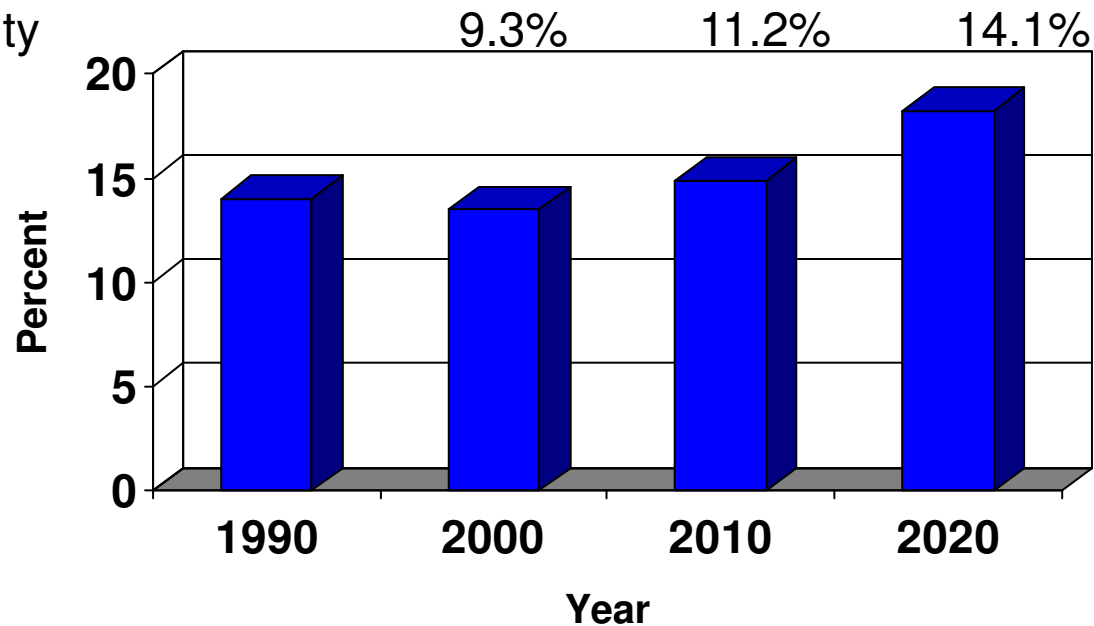


Source: USDC, Bureau of the Census, Census of Population and Housing [2004 Estimates]
Prepared by: Office of Social and Economic Data Analysis (OSED)A
Map Generated on 7.27.2006



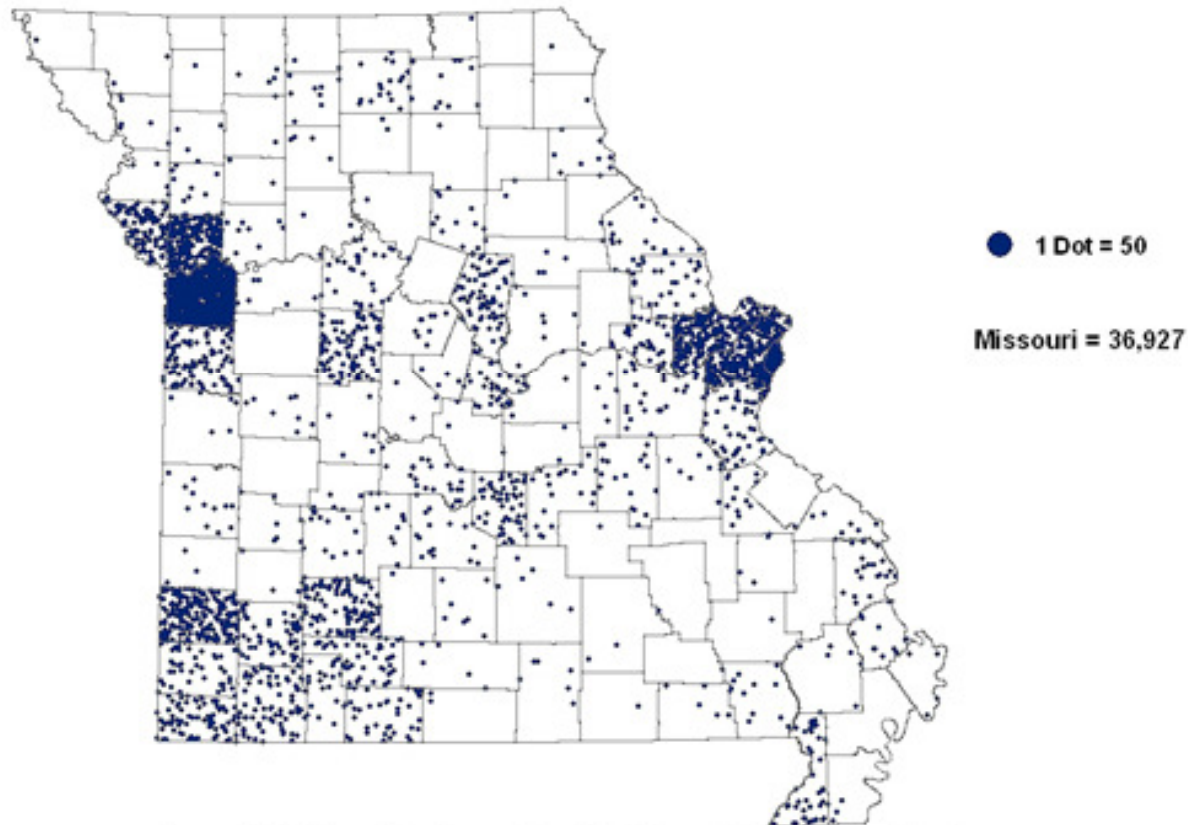
Percent Missouri Population Age 65+: 1990-2020

Johnson County



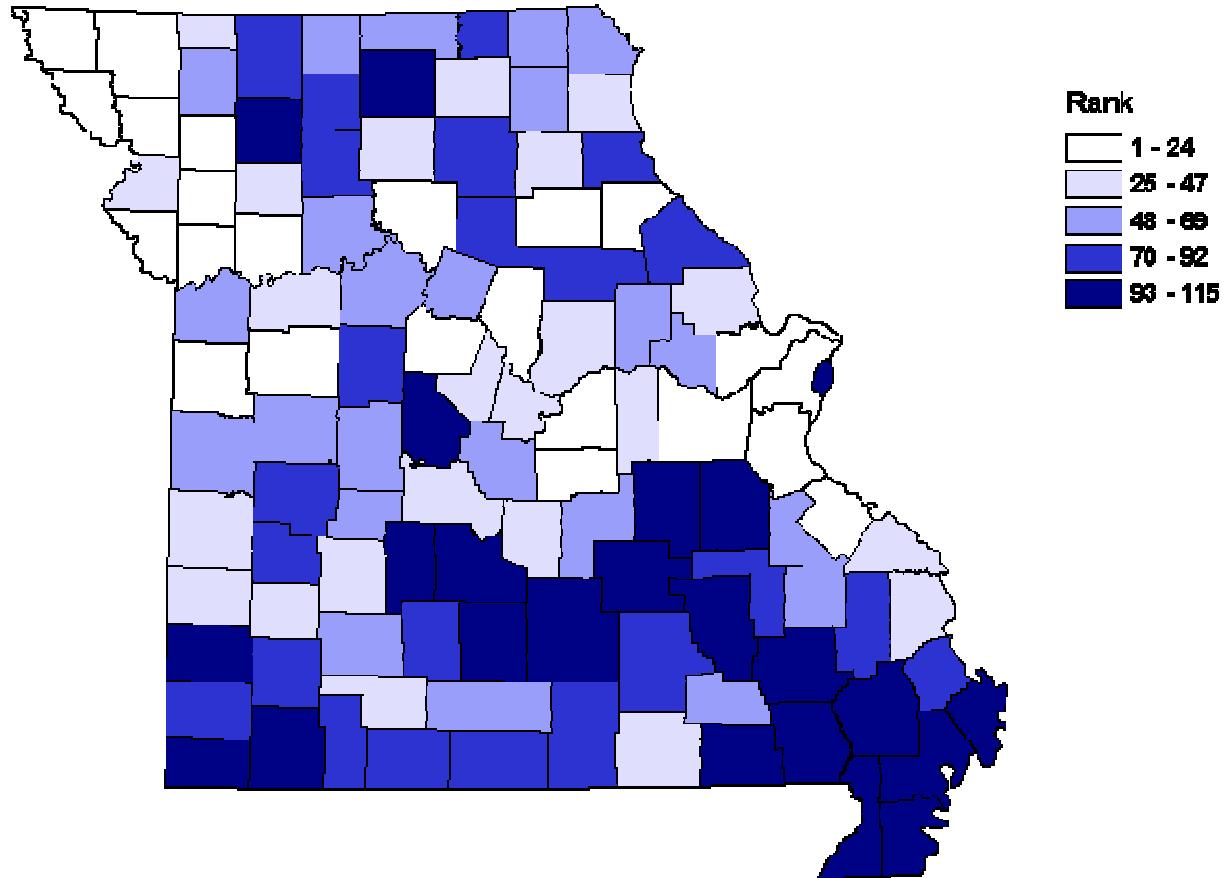
SOURCE: Census Bureau/NCHS. Projection algorithm, programming by OSEDA
Chart Prepared by: University of Missouri Extension, Office of Social and Economic Data Analysis
24March2006

Change in Hispanic Population, 2000-2005



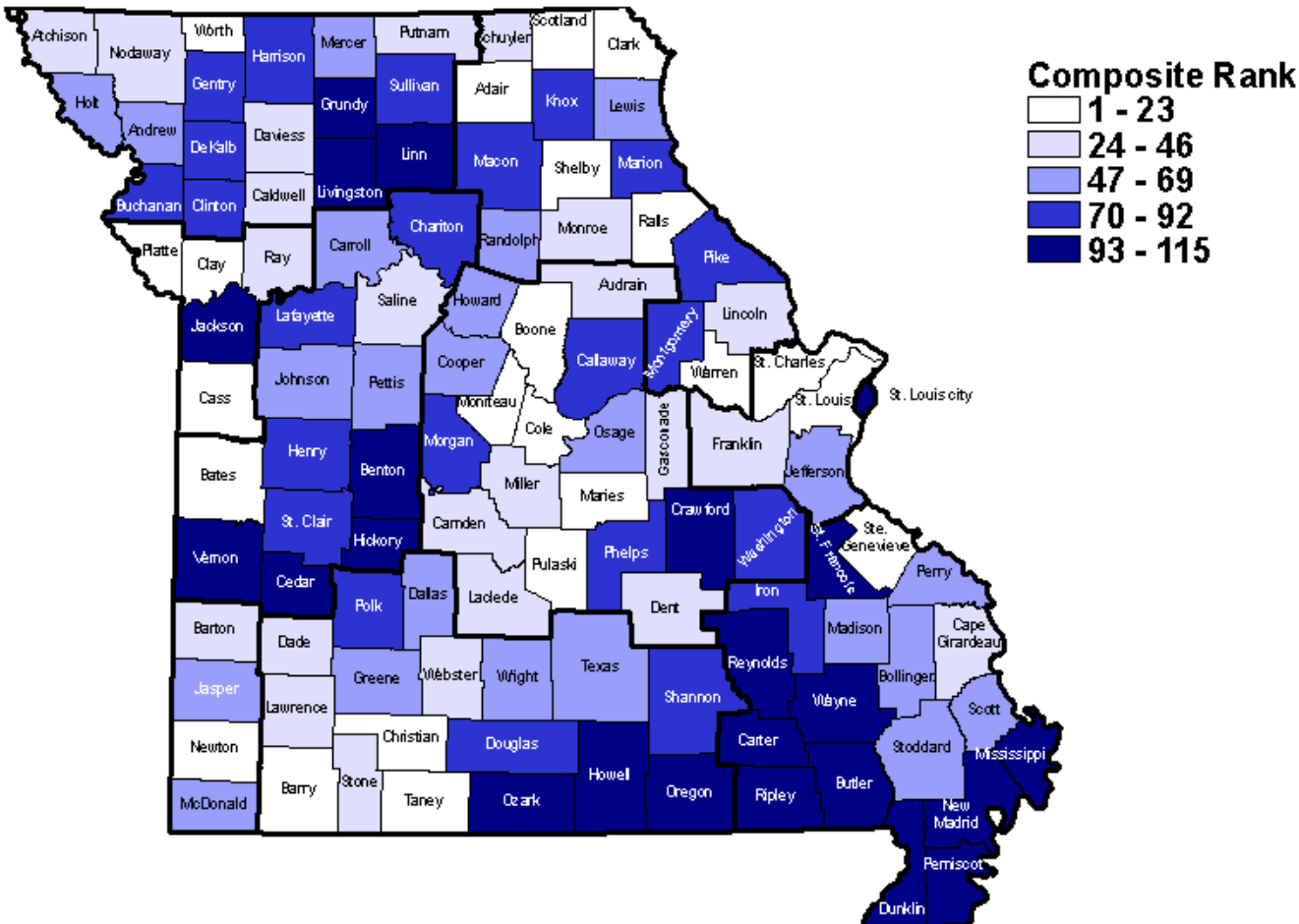
Source: USDC, Bureau of the Census, Federal State Cooperative for Population Estimates
Prepared by: University of Missouri Extension, Office of Social and Economic Data Analysis - (OSED)A
Map Generated on 16April2007

Composite County Kids Count Rank, 2006



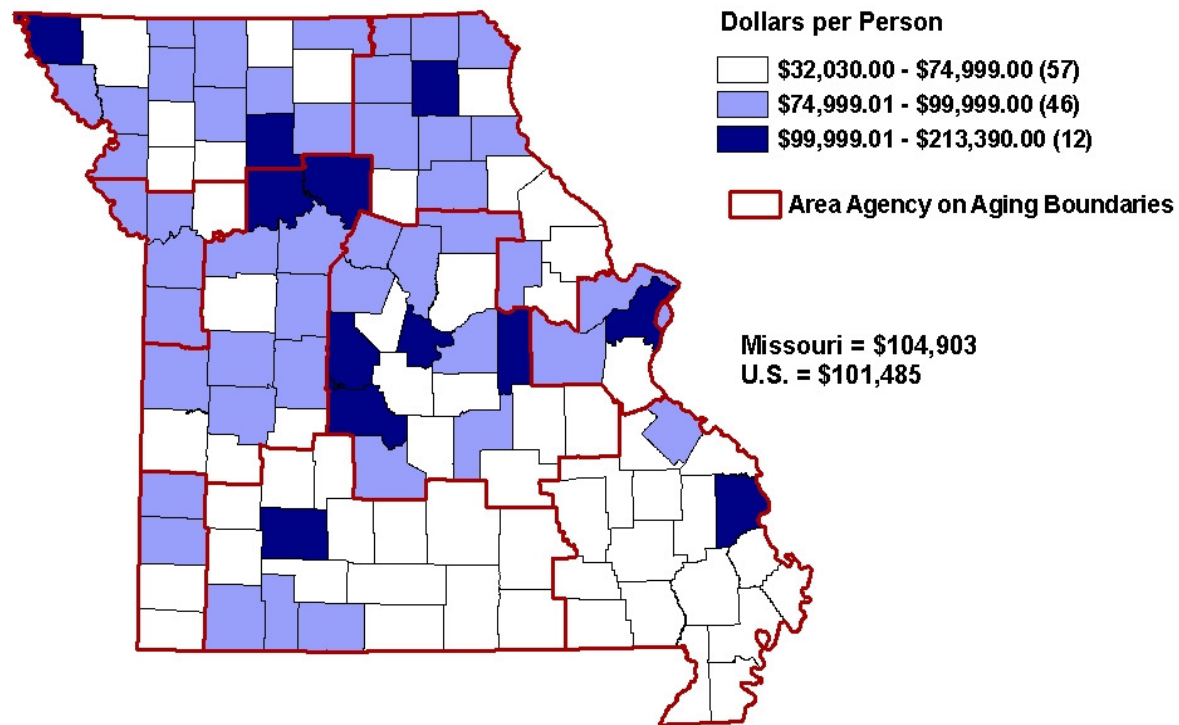
Source: University of Missouri, Office of Social and Economic Data Analysis
Prepared by: University of Missouri Extension, Office of Social and Economic Data Analysis (CSEDA)
Map Generated on: 11.8.2006

Missouri Senior Report 2006



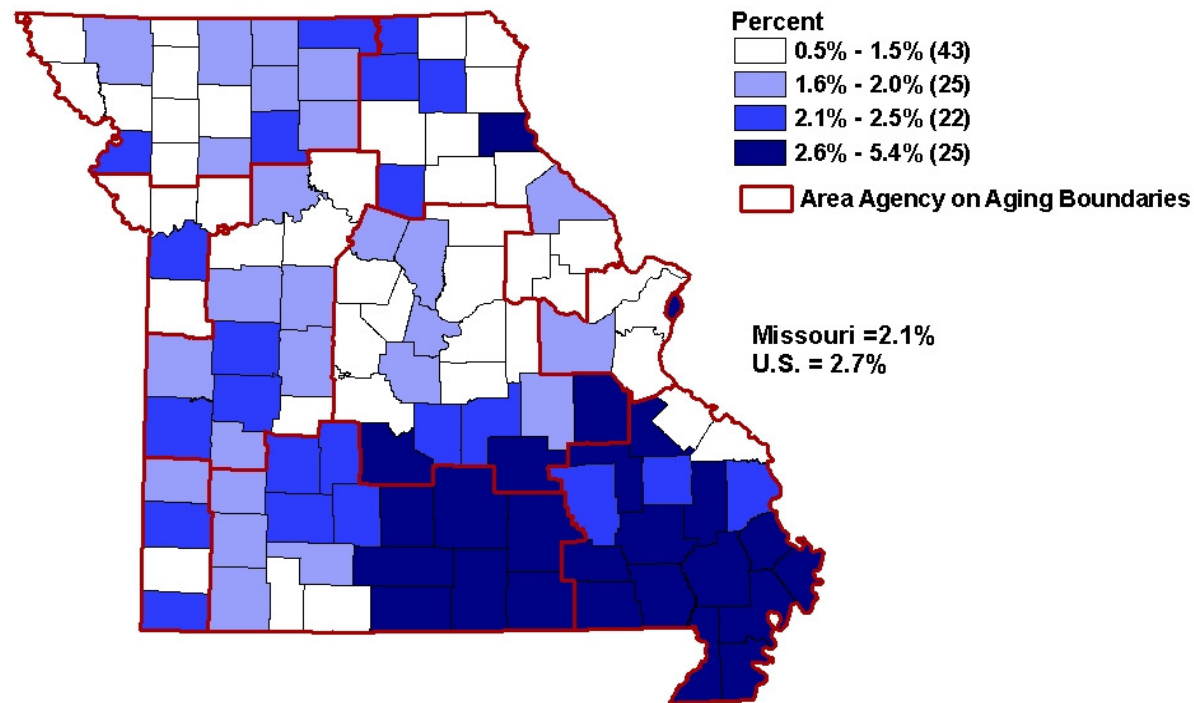
Prepared by: Office of Social and Economic Data Analysis (OSED); 7/06

Net Worth Per Capita, 2003



Source: USDC, Bureau of the Census, 2000 Decennial Census
Produced by: University of Missouri Extension, Office of Social and Economic Data Analysis
Map generated on 03.02.2006

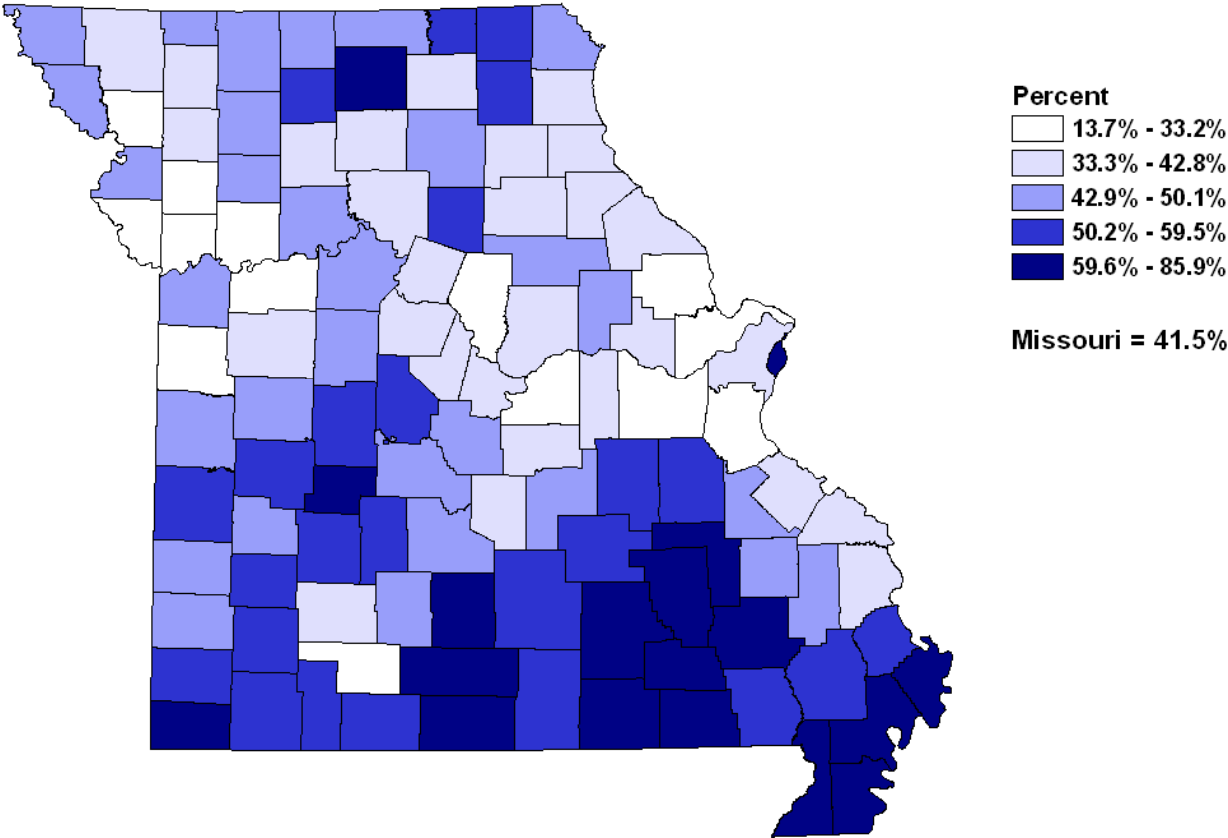
Supplemental Security Income Payments, 2003 as a Percent of Transfer Payments



Source: USDC, Bureau of the Census, 2000 Decennial Census
Produced by: University of Missouri Extension, Office of Social and Economic Data Analysis
Map generated on 03.01.2006

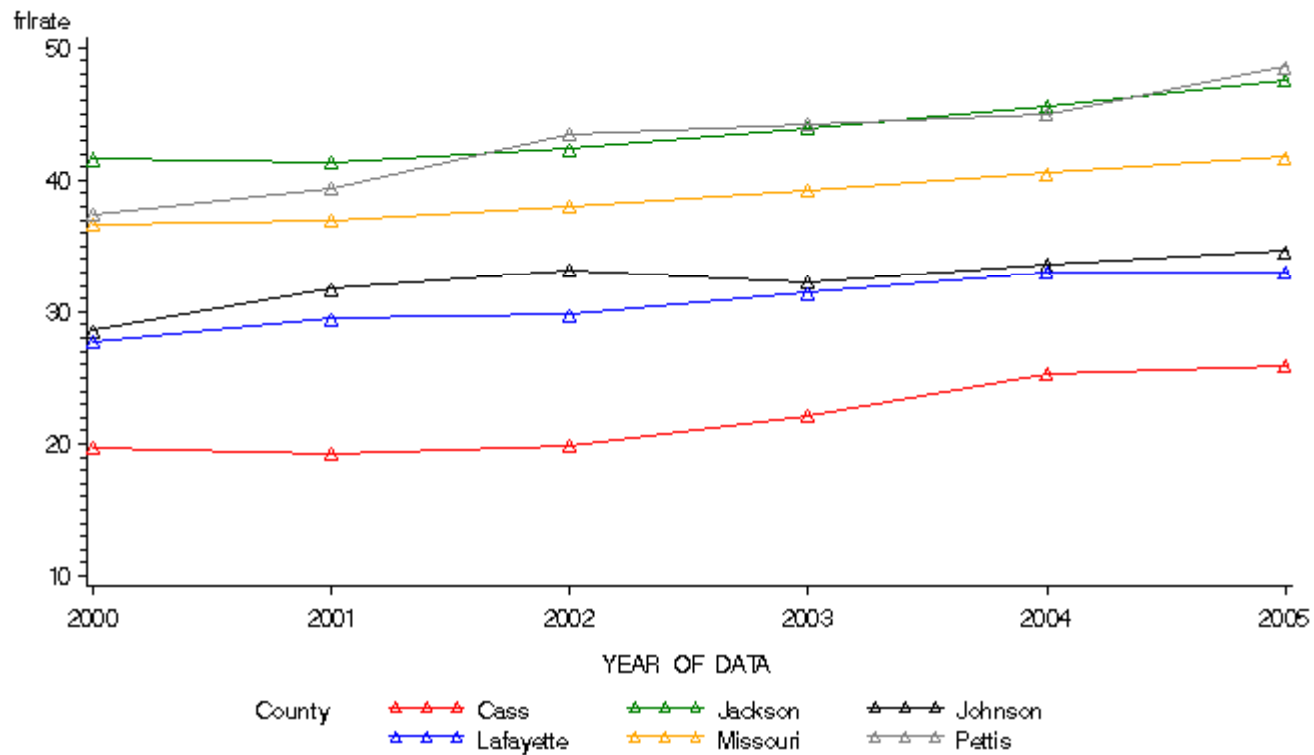


Percent Enrolled for Free/Reduced Lunches, 2005



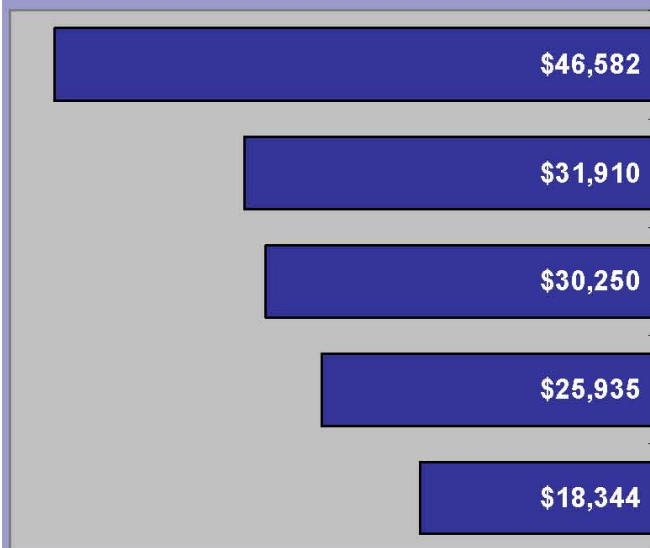
Source: Missouri Department of Elementary and Secondary Education
Prepared by: University of Missouri Extension, Office of Social and Economic Data Analysis (OSED)
Map Generated on: 11.8.2006

Pct Eligible for Free & Reduced Price Lunch

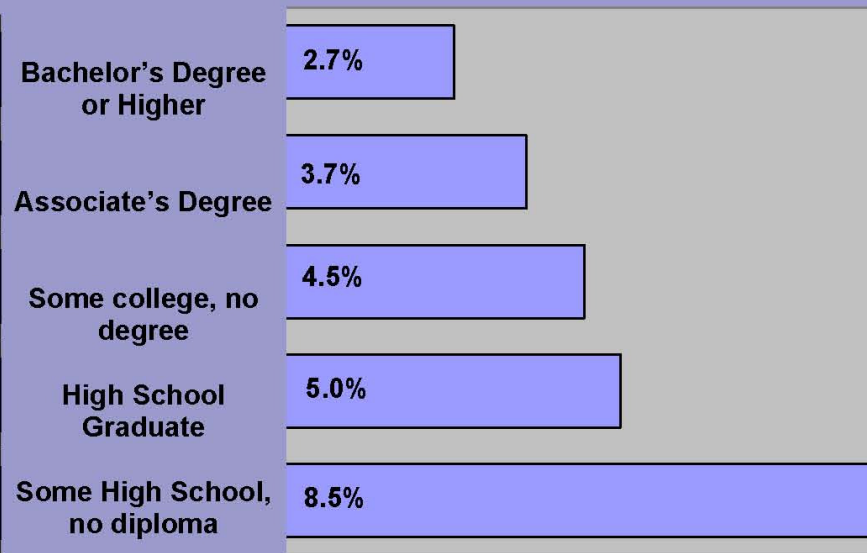


It Pays to Have an Education...

Median Earnings
(dollars)



Unemployment Rate
(percent)



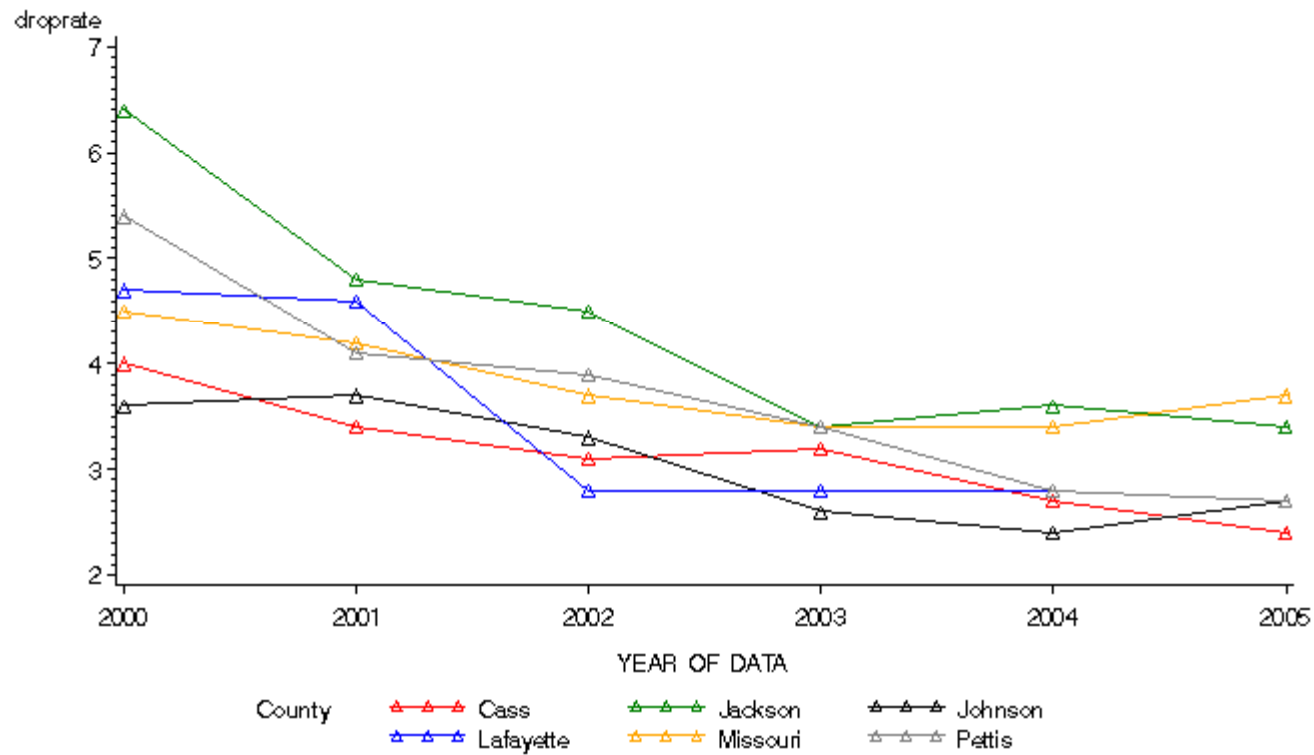
Sources: U.S. Department of Labor, Bureau of Labor Statistics, Unemployment Rate, 2004; and U.S. Department of Commerce, Bureau of Census, Current Population Survey, 2004.



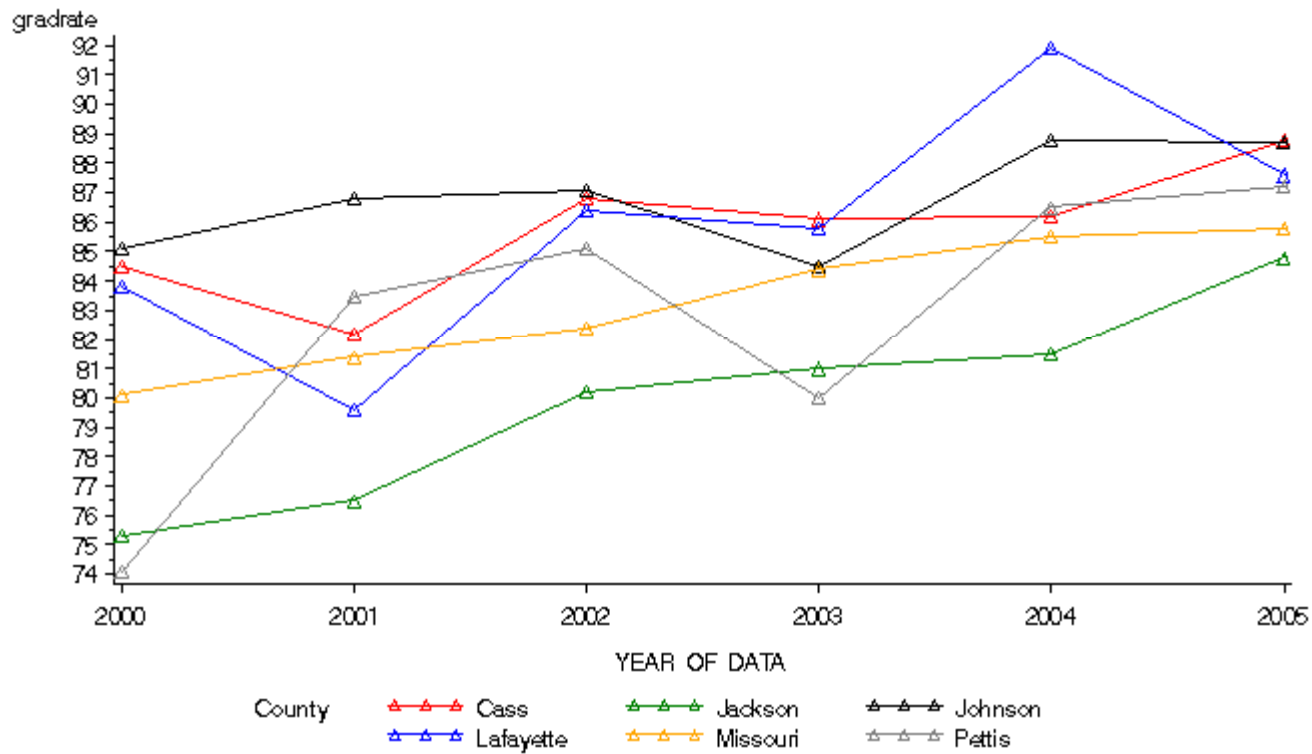
MO Department of Economic Development
301 W. High St. Harry S. Truman Bldg Room 580
PO BOX 3150 Jefferson City, MO 65102-3150

Phone: 573-751-3635
Fax: 573-751-7258
www.missourieconomy.org

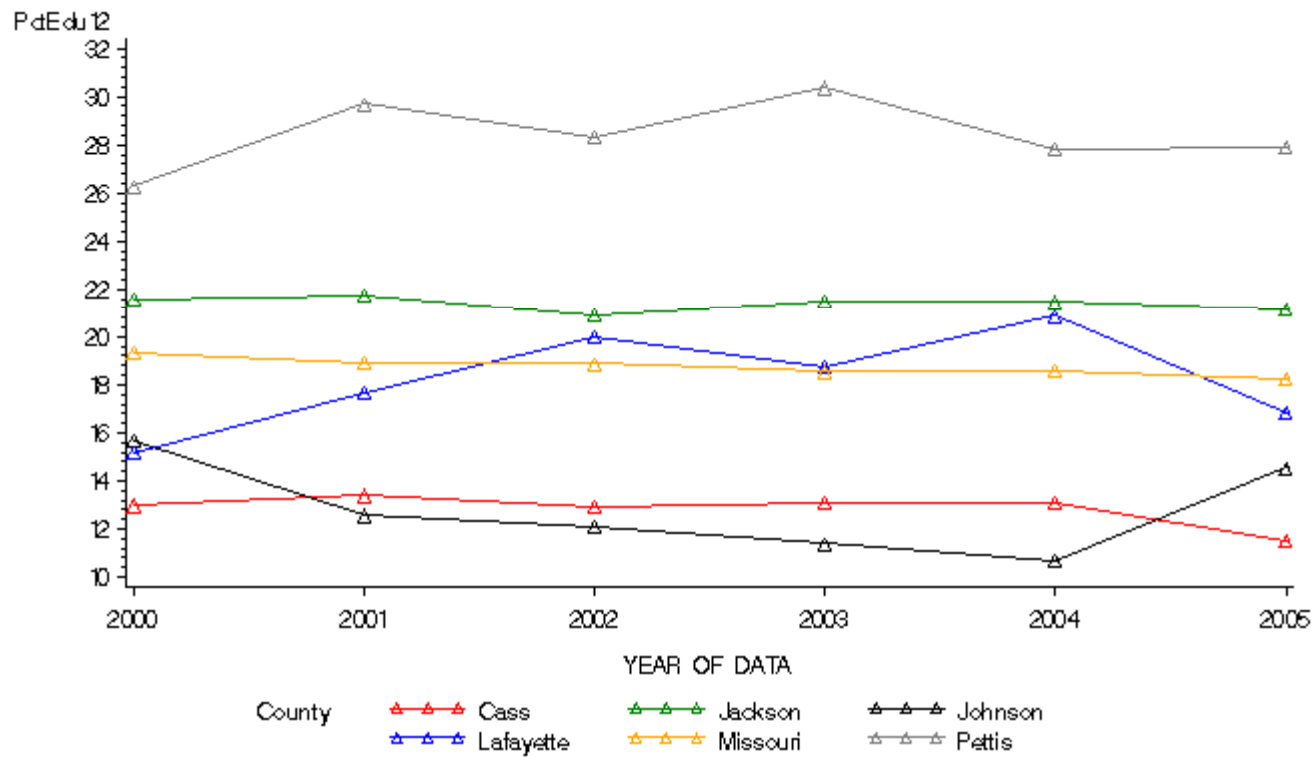
Dropout Rate Grades 9-12



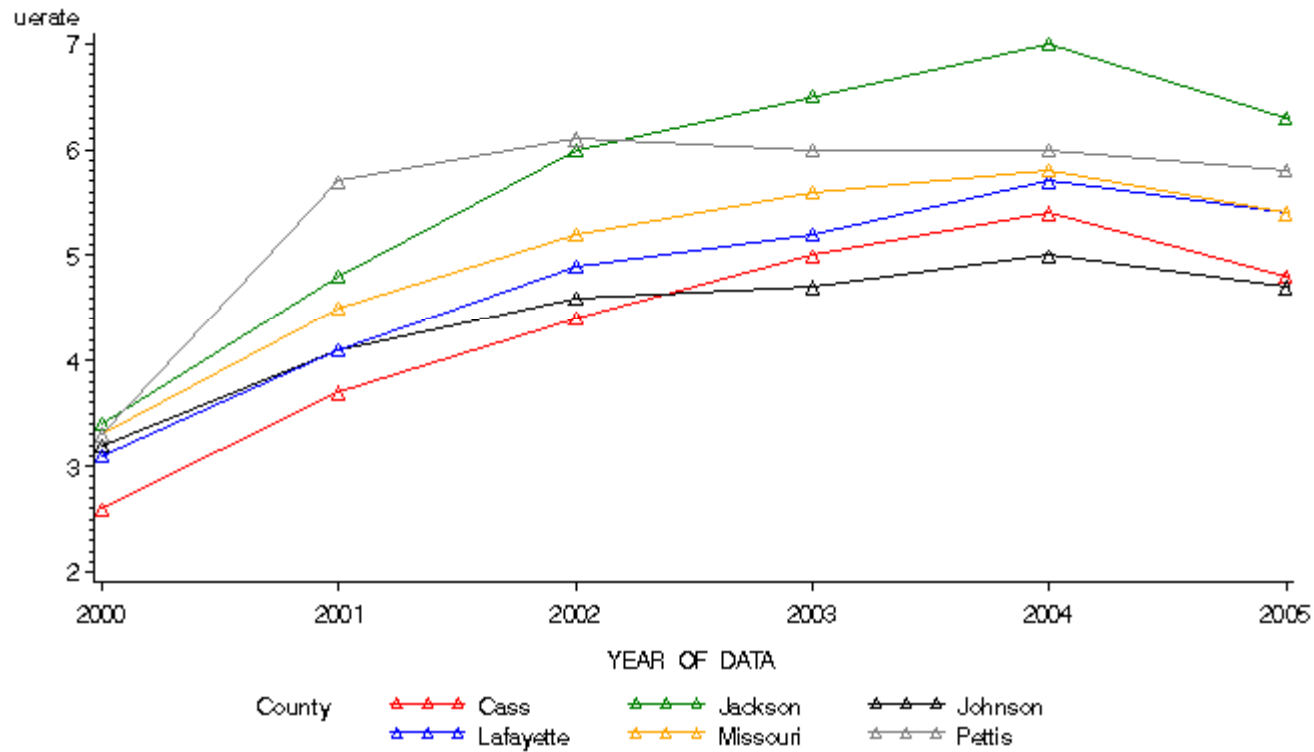
Cohort Graduation Rate



Pct Births to mothers with less than 12 years education



Adult unemployment rate



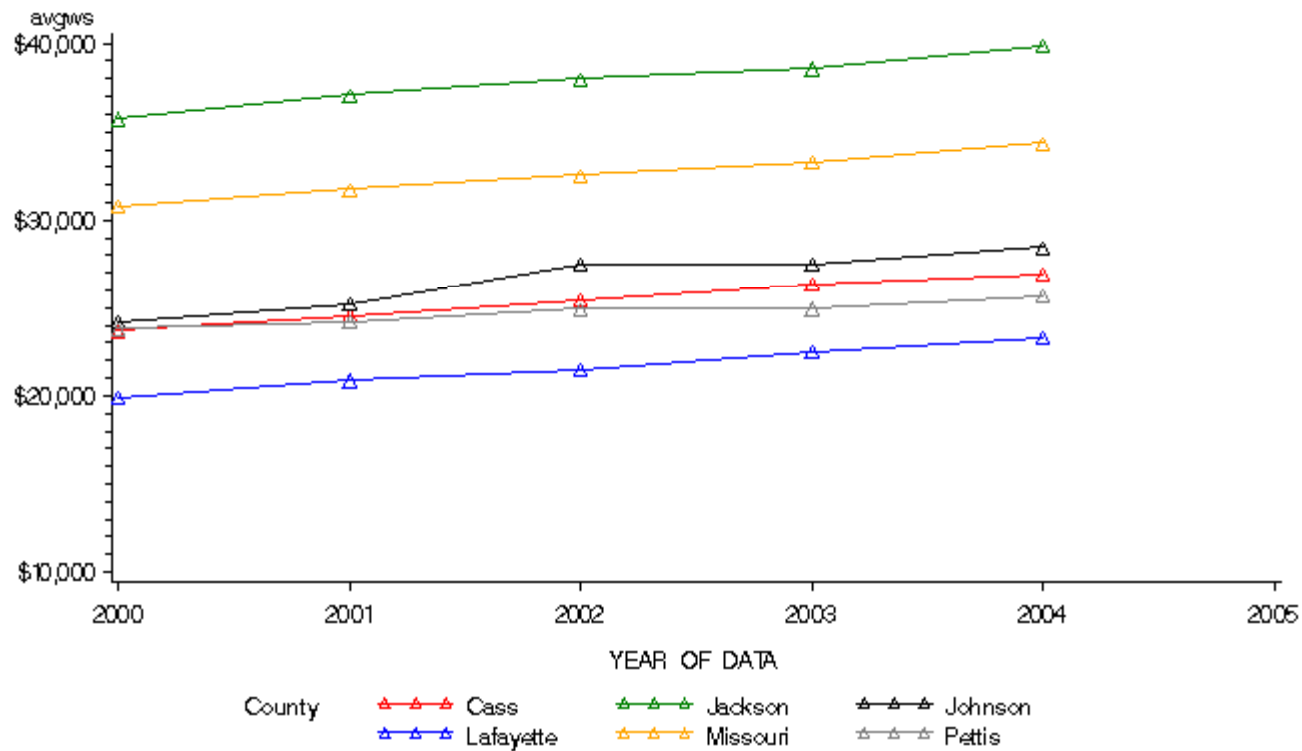
Labor Force Annual Averages in 2006	Johnson County, MO	Cass County, MO	Jackson County, MO	Lafayette County, MO
Total Labor Force	25,941	49,588	341,598	16,972
5-year % change	7.10%	7.30%	-2.60%	-3.30%
10-year % change	16.30%	19.00%	-4.90%	3.80%
Employed	24,877	47,341	322,350	16,174
5-year % change	7.00%	6.40%	-3.50%	-3.90%
10-year % change	14.80%	17.90%	-5.90%	3.50%
Unemployed	1,064	2,247	19,248	798
5-year % change	8.20%	32.30%	15.10%	10.10%
10-year % change	70.20%	46.30%	16.20%	12.10%
Unemployment Rate	4.1	4.5	5.6	4.7
5-year % change	0.00%	21.60%	16.70%	14.60%
10-year % change	46.40%	21.60%	21.70%	6.80%

Source: US Bureau Labor Statistics

Per Capita Personal Income	Johnson County, MO	Cass County, MO	Jackson County, MO	Lafayette County, MO
Per capita income - 2005	\$24,573	\$28,932	\$33,585	\$29,023
Per capita income - 1995 (adj. for inflation)	\$20,075	\$26,691	\$29,875	\$24,587
Per capita income - 1985 (adj. for inflation)	\$18,569	\$24,364	\$27,583	\$23,862
Per capita income - 1975 (adj. for inflation)	\$17,182	\$18,876	\$24,342	\$20,445
10-year adjusted % change	22.40%	8.40%	12.40%	18.00%
20-year adjusted % change	32.30%	18.70%	21.80%	21.60%
30-year adjusted % change	43.00%	53.30%	38.00%	42.00%

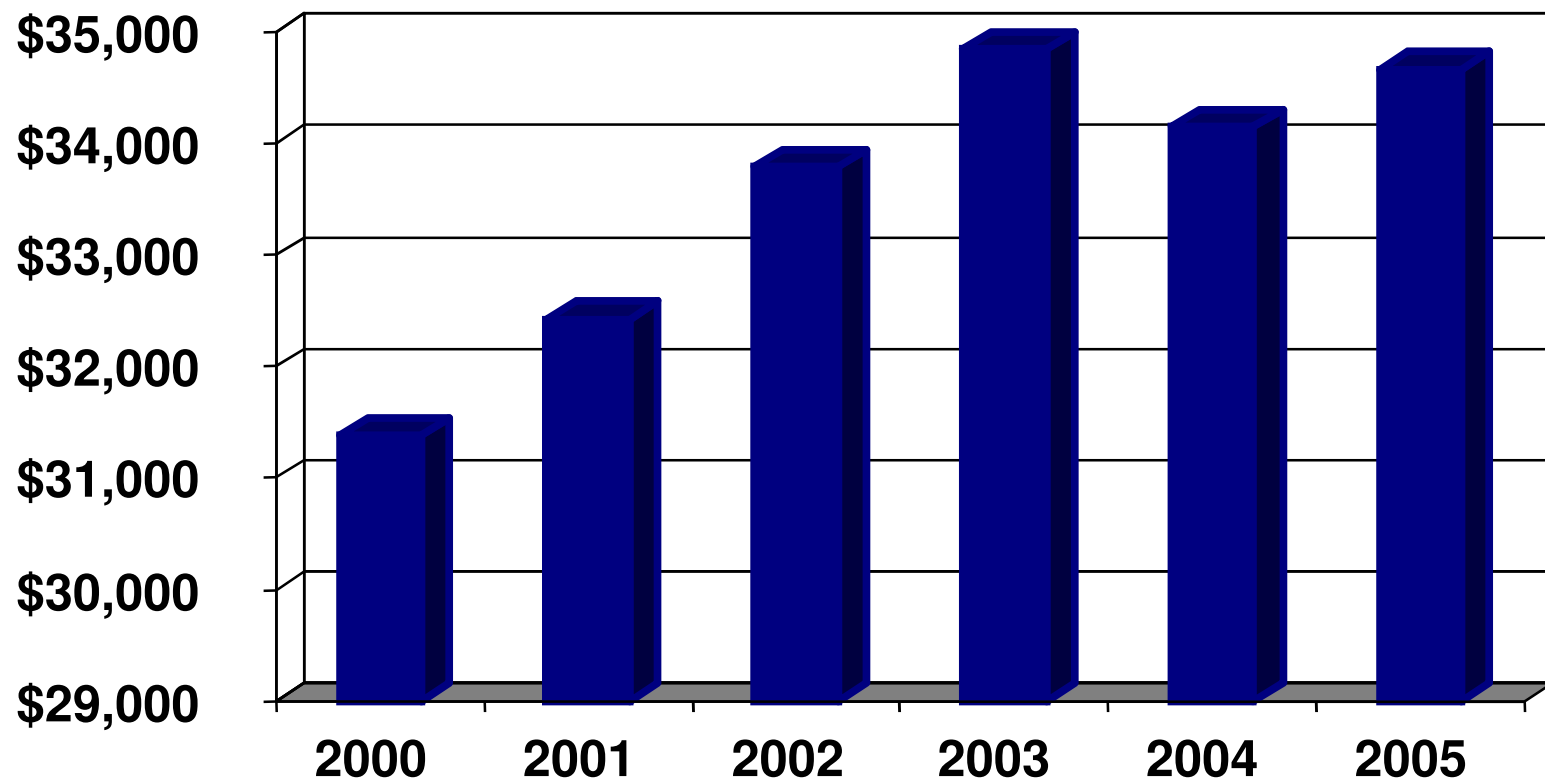
Source: US Bureau of Economic Analysis

Average Annual Wage & Salary, BEA





Average Annual Wages: Missouri, 2000-2005



Establishments	Johnson County, MO	Cass County, MO	Jackson County, MO	Lafayette County, MO
2005	1,026	2,019	18,619	872
2004	1,007	1,942	18,675	886
2003	973	1,853	18,770	888
2002	944	1,832	19,012	882
2001	926	1,860	18,894	877
2000	920	1,795	18,903	881
1999	911	1,714	18,982	891
1998	906	1,699	19,126	885
1997	876	1,617	18,753	877
1996	854	1,569	18,618	854
1995	841	1,505	18,439	831
10-Year Change	185	514	180	41
10-Year Percent Change	22.0%	34.2%	1.0%	4.9%

BEA Major Sector Jobs (NAICS) in 2005 (by place of work)		Johnson County, MO	Cass County, MO	Jackson County, MO	Lafayette County, MO
	Total by place of work	30,294	37,222	457,662	14,791
	Wage and Salary	21,067	24,951	396,035	9,976
	Proprietors	9,227	12,271	61,627	4,815
	Farm	1,774	1,634	813	1,302
	Nonfarm	7,453	10,637	60,814	3,513
22	Utilities	85	60	2,013	D
23	Construction	1,915	4,687	27,358	1,253
31-33	Manufacturing	2,221	1,461	28,956	1,267
42	Wholesale Trade	496	1,047	18,616	383
44-45	Retail Trade	2,765	5,589	44,779	2,025
48-49	Trans. and warehousing	541	1,463	13,353	D
51	Information	272	340	19,817	165
52	Finance and insurance	856	1,272	30,589	512
53	Real Estate and rental and leasing	1,055	2,008	16,796	599
56	Administrative and waste services	994	1,772	24,814	467
61	Educational services	251	392	8,315	D
62	Health care, social assistance	1,701	2,854	44,877	D
71	Arts, entertainment, and recreation	461	539	9,518	129
72	Accommodation and food services	1,912	2,255	31,266	800
81	Other services, exc. public admin.	1,570	2,431	24,401	940
NA	Gov. and gov. enterprises	10,269	5,251	65,668	2,387



Jobs	Johnson County, MO	Cass County, MO	Jackson County, MO	Lafayette County, MO
2005	15,424	22,174	363,767	9,059
2004	14,665	21,133	361,955	9,054
2003	14,375	20,203	365,079	8,991
2002	14,240	19,539	375,227	9,025
2001	14,040	19,357	384,942	9,212
2000	14,345	18,630	393,430	9,248
1999	14,172	17,638	392,171	9,375
1998	13,952	16,616	388,817	9,199
1997	13,440	15,761	388,427	9,213
1996	12,834	15,196	375,631	8,942
1995	12,831	14,521	371,151	9,012
10-Year Change	2,593	7,653	-7,384	47
10-Year Percent Change	20.20%	52.70%	-2.00%	0.50%

Source: US Bureau of Labor Statistics(BLS)

D = Non-Discloseable Data; N/A = Not Available

Avg. Wage Per Job (2005 Dollars)	Johnson County, MO	Cass County, MO	Jackson County, MO	Lafayette County, MO
2005	\$27,448	\$27,088	\$41,398	\$23,528
2004	\$27,479	\$26,988	\$41,481	\$23,759
2003	\$27,175	\$27,182	\$41,140	\$23,536
2002	\$28,054	\$27,027	\$41,615	\$23,197
2001	\$27,273	\$26,407	\$41,249	\$22,849
2000	\$27,088	\$26,111	\$40,943	\$22,348
1999	\$27,480	\$26,188	\$39,828	\$22,688
1998	\$26,666	\$25,704	\$38,995	\$22,344
1997	\$26,514	\$24,884	\$37,698	\$21,565
1996	\$25,531	\$24,490	\$37,344	\$21,510
1995	\$25,078	\$23,905	\$37,231	\$21,037
10-Year Change	\$2,370	\$3,183	\$4,167	\$2,491
10-Year Percent Change	9.50%	13.30%	11.20%	11.80%

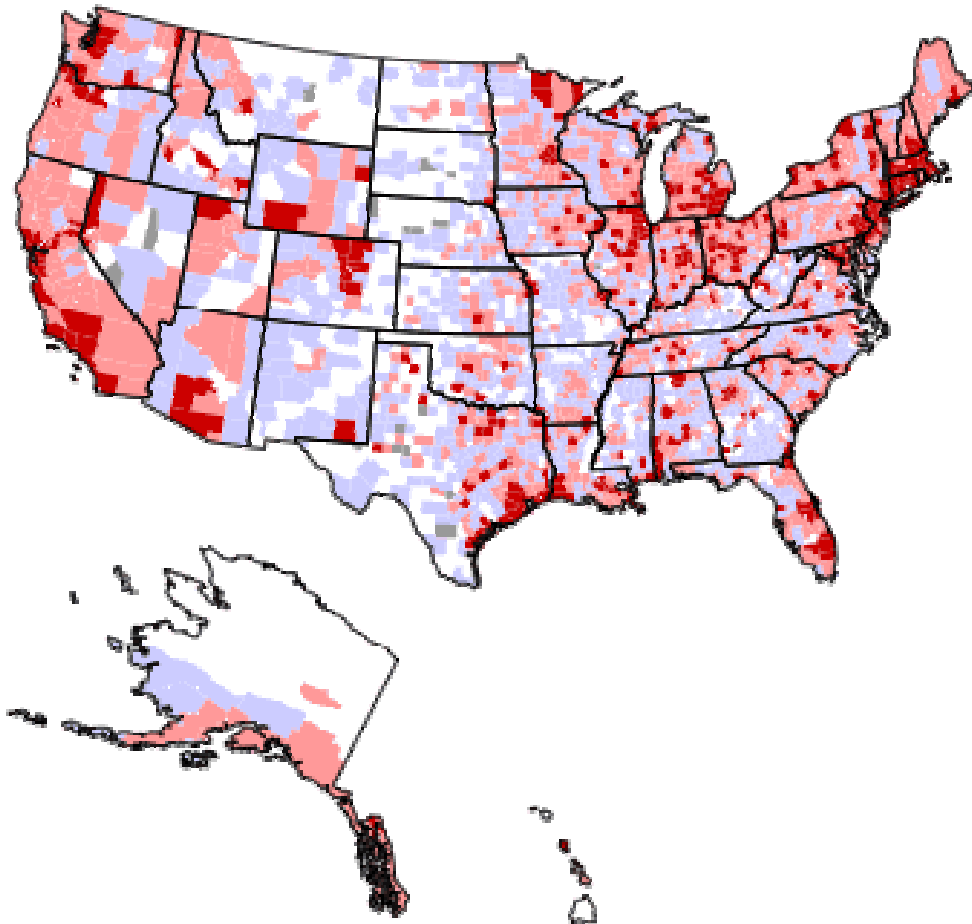
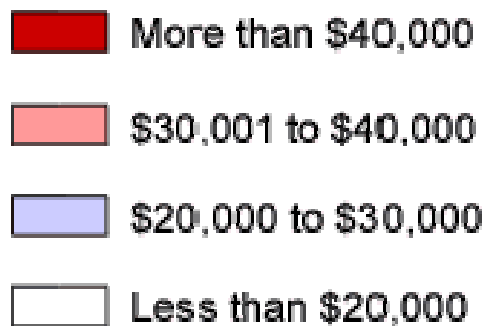
Source: US Bureau of Labor Statistics(BLS)

Percent of US Avg. Wage Per Job (2005 Dollars)	Johnson County, MO	Cass County, MO	Jackson County, MO	Lafayette County, MO
2005	67.50%	66.60%	101.80%	57.80%
2004	67.50%	66.30%	102.00%	58.40%
2003	67.80%	67.80%	102.60%	58.70%
2002	70.30%	67.70%	104.30%	58.10%
2001	68.30%	66.10%	103.30%	57.20%
2000	67.60%	65.20%	102.20%	55.80%
1999	70.00%	66.70%	101.50%	57.80%
1998	69.60%	67.10%	101.80%	58.30%
1997	70.60%	66.20%	100.30%	57.40%
1996	70.80%	67.90%	103.50%	59.60%
1995	69.00%	65.80%	102.50%	57.90%
10-Year Change	N/A	N/A	N/A	N/A
10-Year Percent Change	N/A	N/A	N/A	N/A

Source: US Bureau of Labor Statistics(BLS)

Average Wage Per Job: Manufacturing Employment*

Average U.S. Wage = \$44,797



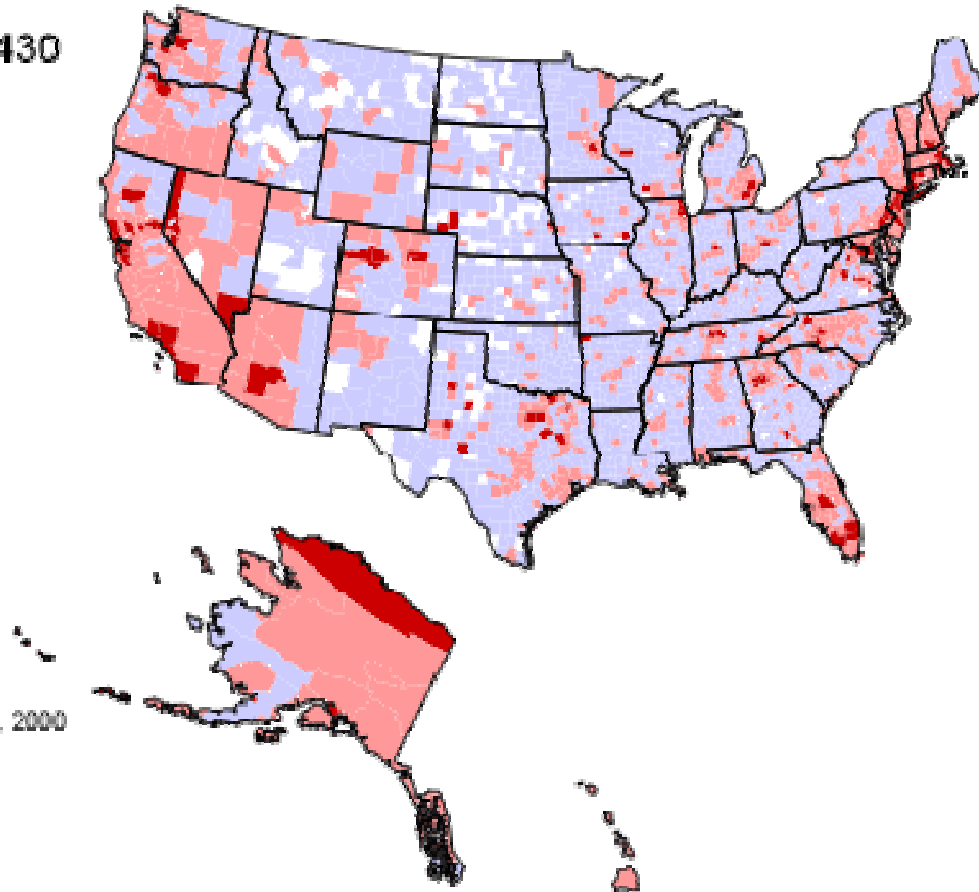
Indiana Business Research Center
Kelley School of Business
Indiana University
Data source: U.S. Bureau of Labor Statistics, 2000

*No data available for counties shown in gray

Average Wage Per Job: Retail Employment

Average U.S. Wage = \$18,430

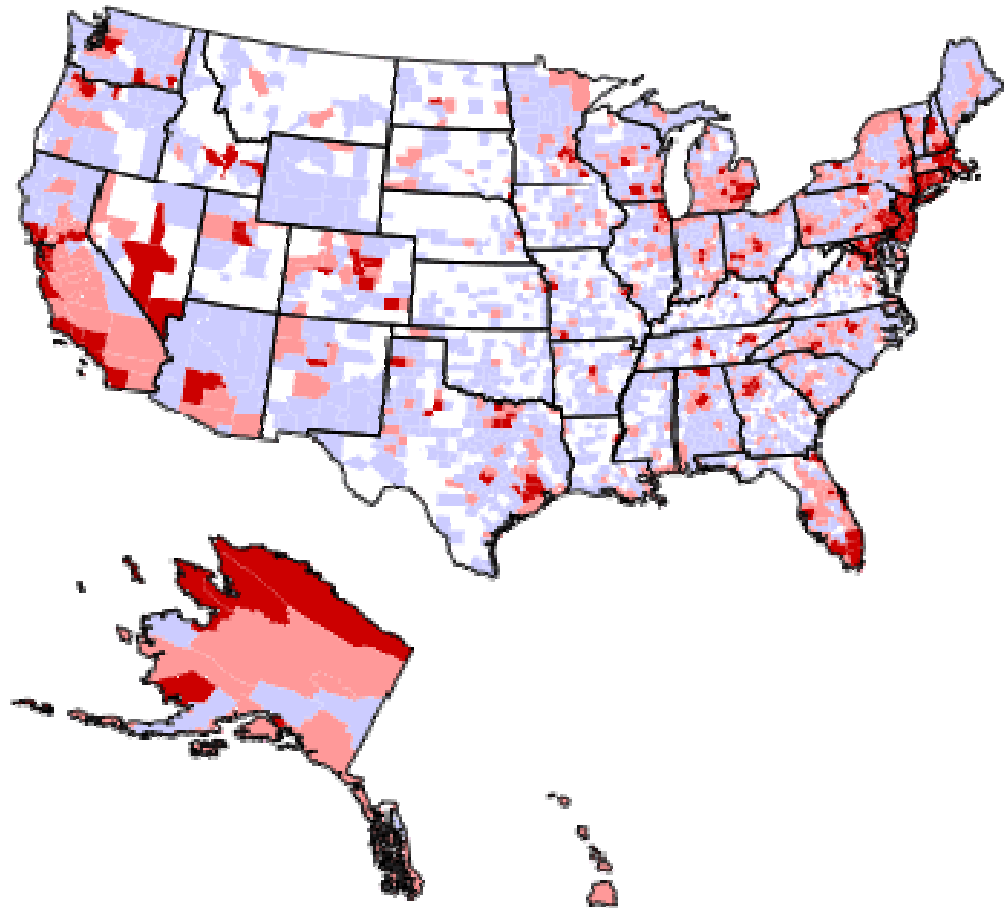
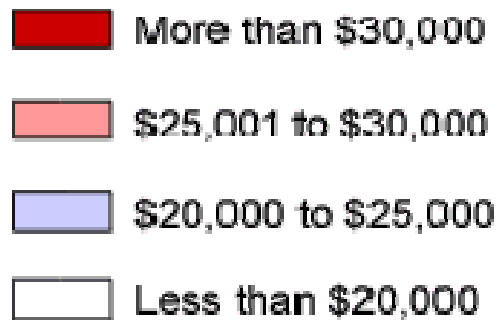
-  More than \$20,000
-  \$15,001 to \$20,000
-  \$10,000 to \$15,000
-  Less than \$10,000



Indiana Business Research Center
Kelley School of Business
Indiana University
Data source: U.S. Bureau of Labor Statistics, 2000

Average Wage Per Job: Services Employment

Average U.S. Wage = \$33,369

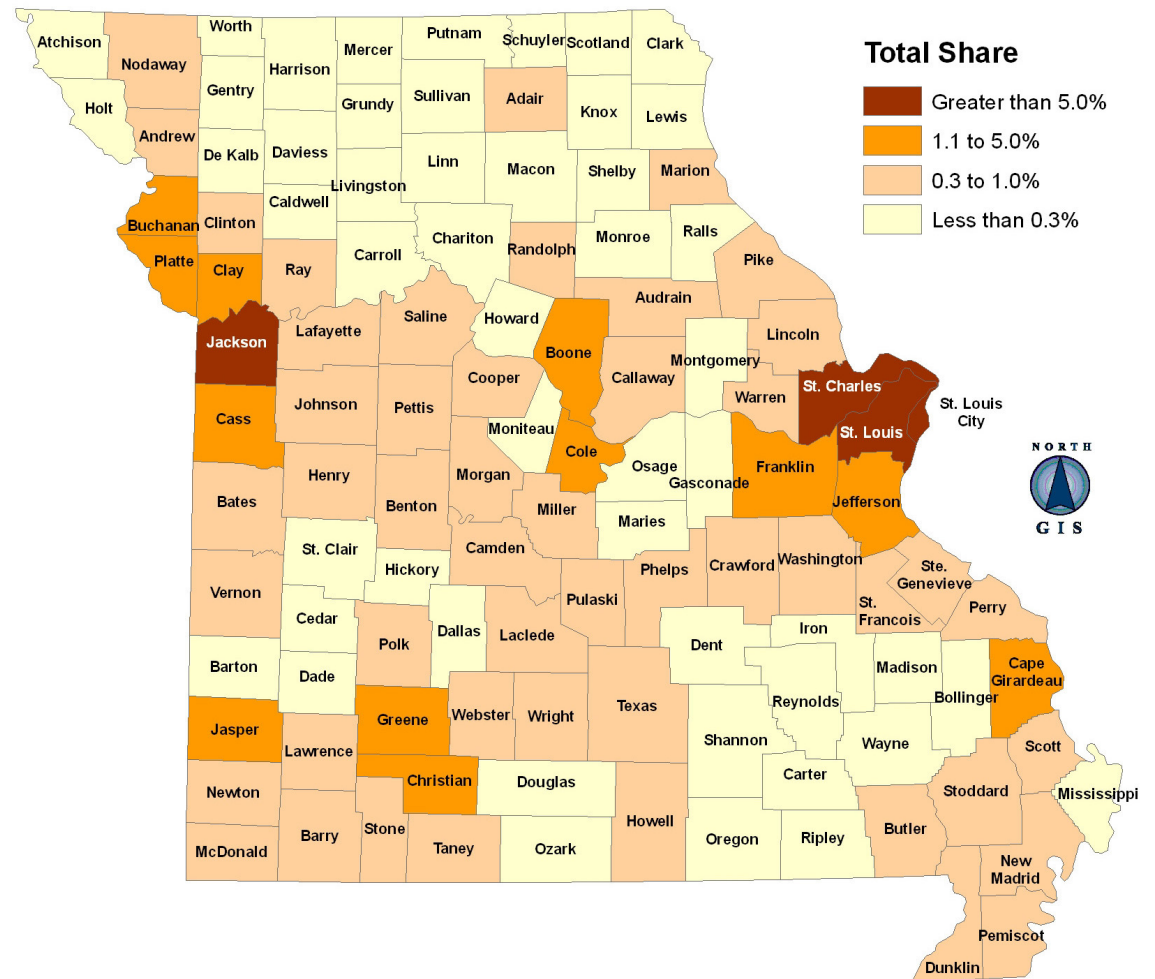


Indiana Business Research Center
Kelley School of Business
Indiana University
Data source: U.S. Bureau of Labor Statistics, 2000

Economic Share

Economic Share in Missouri by County

St. Louis County (20.7%) and Jackson County (11.8%) together tally nearly one-third of the state's economy.





Overview

- Big Trends – growth, economy, aging, immigration
- Emerging Characteristics in Johnson County
 - Demographics
 - Socio-economic Status
 - Economic Trends
- New Forms of Information (ACS)
- Discussion

WWW.OSEDA.MISSOURI.EDU
WWW.MCDC2.MISSOURI.EDU