



- GIS technology is emerging worldwide as the standard tool for integrated management of geographic information.
- Geographic information, often referred to as spatial information, can be defined as any piece of information that can be referenced by an x,y location.
- GIS technology enables managers and users of the geographic information to integrate and perform more complex analyses than are practically feasible in manual environments.

<http://msdis.missouri.edu>

What is MSDIS?

- Missouri Spatial Data Information Service
- It's a spatial and tabular data retrieval and archival system.
- Responsible for:
 - Data storage and access
 - Standardization of both digital and tabular data
 - Creation of the data dictionary
 - Compilation of metadata
 - Statewide GIS user information networks



<http://msdis.missouri.edu>

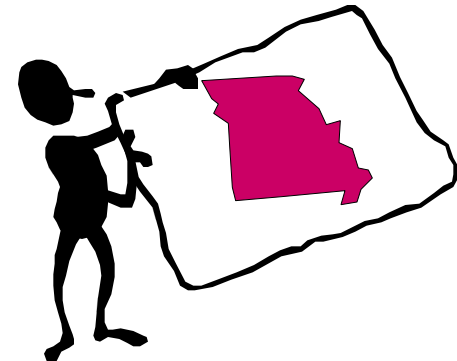
Administration

- ◆ MSDIS operates under the guidance of the Missouri Geographic Information System Advisory Committee (MGISAC)
- ◆ This committee reports to the Chief Information Officer within the Missouri Office of Information Technology (OIT).
- ◆ These groups aid in the formulation of work plans and provide direction for the MSDIS, as well as other state GIS activities.



History of Missouri GIS Initiative

- ✘ Proposal Submitted to State (July 1993)
- ✘ Initiated by Governor Carnahan (1994)
- ✘ First Funding (\$158,000) to MU (FY 1995) with two primary objectives
 - ‘Support the orderly implementation of GIS technology in state agencies’
 - ‘Develop a clearinghouse of public GIS databases.’
- ✘ Missouri GIS Advisory Committee formed (June 1996)
 - Appointed by and reports to CIO
 - Established Bylaws
 - Set FY 1998 Work Plan



GIS Advisory Committee Purpose

- ✘ Foster cooperation and provide a forum for the Missouri GIS community (state government, local government, education, and business)
- ✘ Advise and assist OIT in setting GIS policy and establishing standards
- ✘ Reduce unnecessary duplication and increase coordination
- ✘ Guide MSDIS in fulfilling annual work plan objectives



<http://msdis.missouri.edu>

GOALS

- ◆ Establish and make available to the state's GIS community a core database of geographic information.
- ◆ Encourage development, maintenance, and dissemination of thematic databases built on the core database foundation.
- ◆ Encourage use of GIS technology and geographic data resources in Missouri by providing practical support in the form of GIS related services.
- ◆ Inform and educate supervisors, managers and other professionals in the state about GIS technology, its current capabilities and future potential.



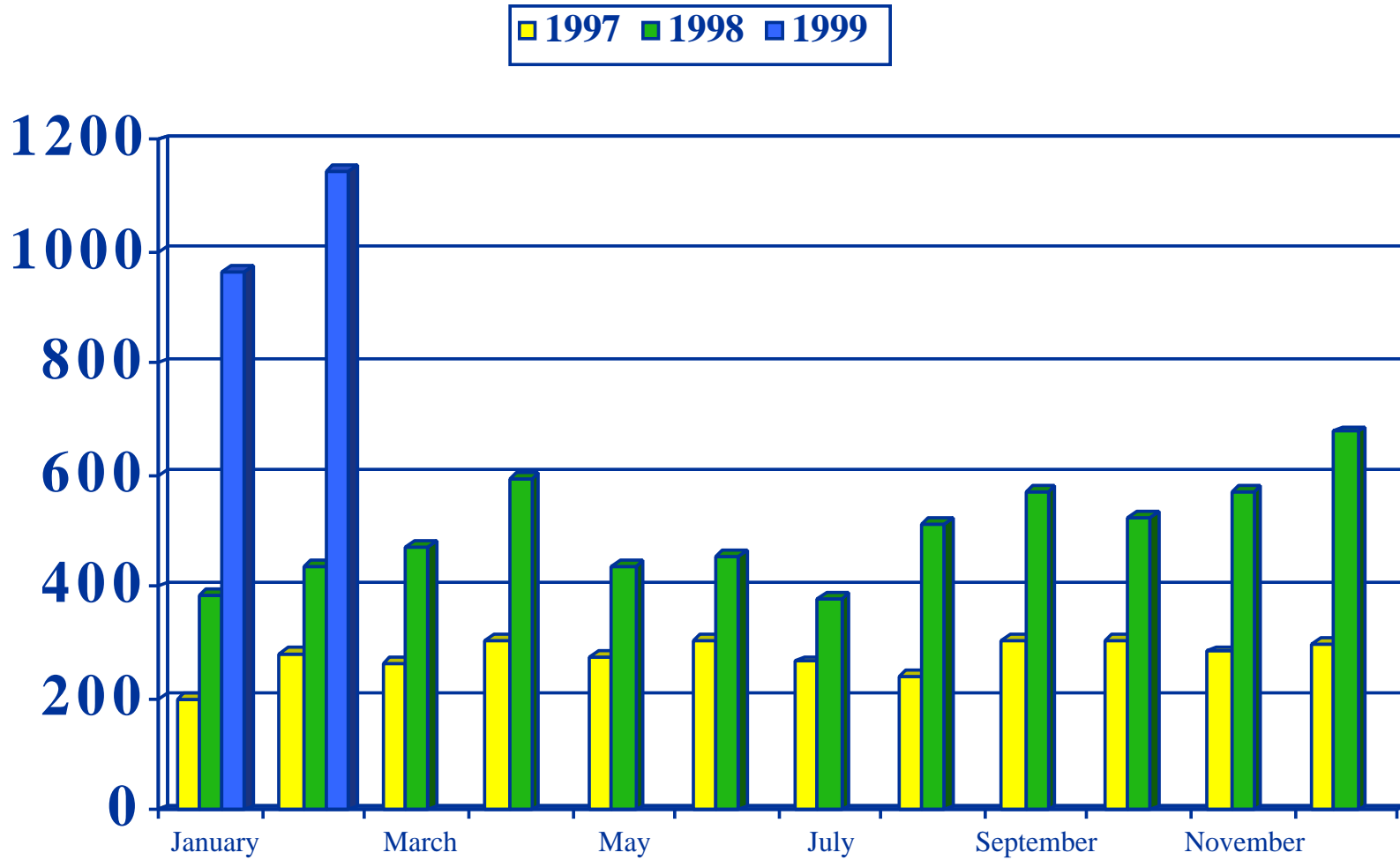
<http://msdis.missouri.edu>

Services

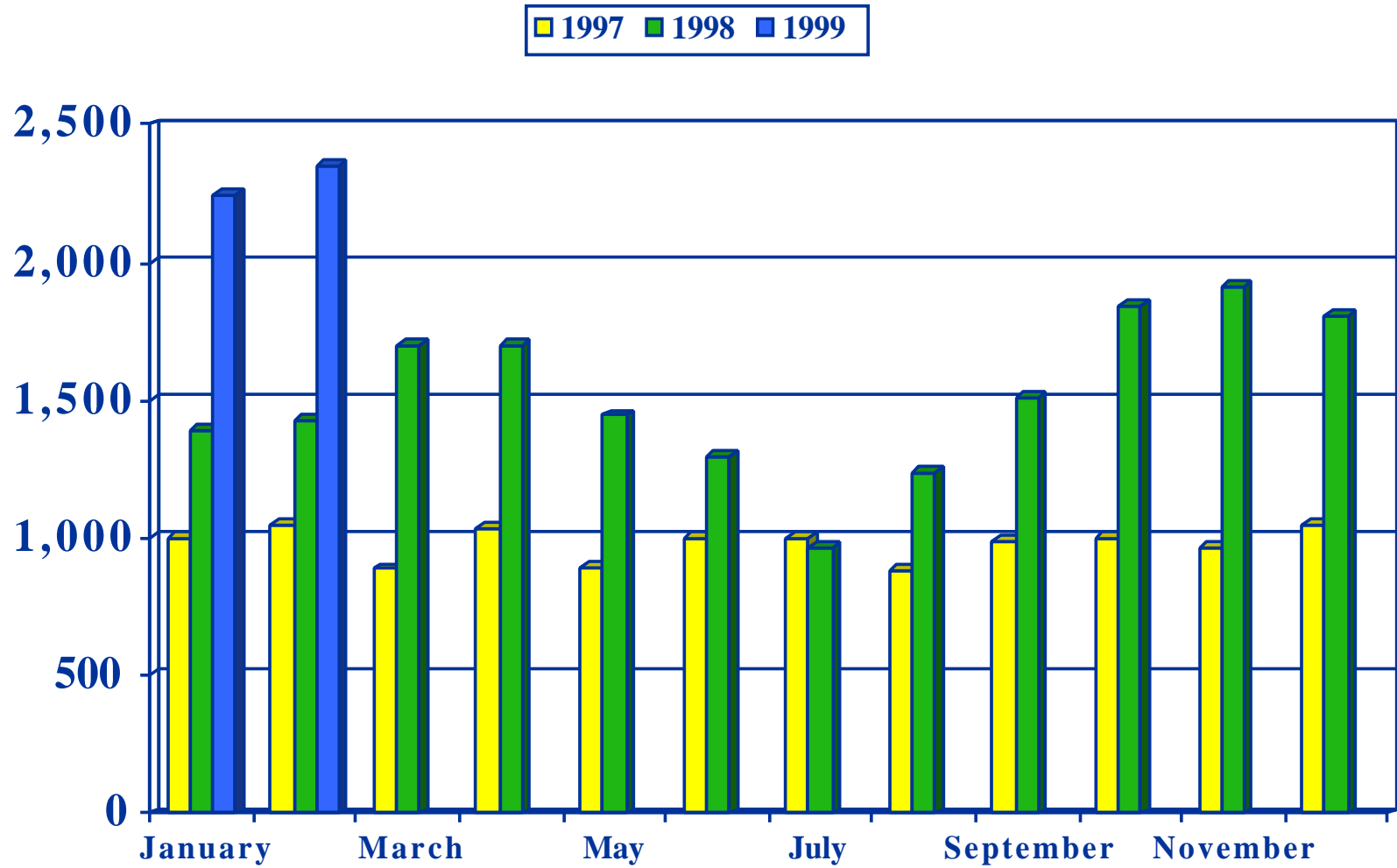
- ◆ Receive, catalog and archive databases
- ◆ Check and verify accuracy and integrity of data
- ◆ Maintain database directory
- ◆ Maintain metadata
- ◆ Handle special data requests
- ◆ Provide download via FTP
- ◆ Provide conversion services
- ◆ Handle user inquiries
- ◆ Provide user support for data
- ◆ Provide GIS education and training
- ◆ Conduct application conferences and workshops
- ◆ Present at user conferences and other venues
- ◆ Participate in regional planning activities



Average Successful Requests / Day

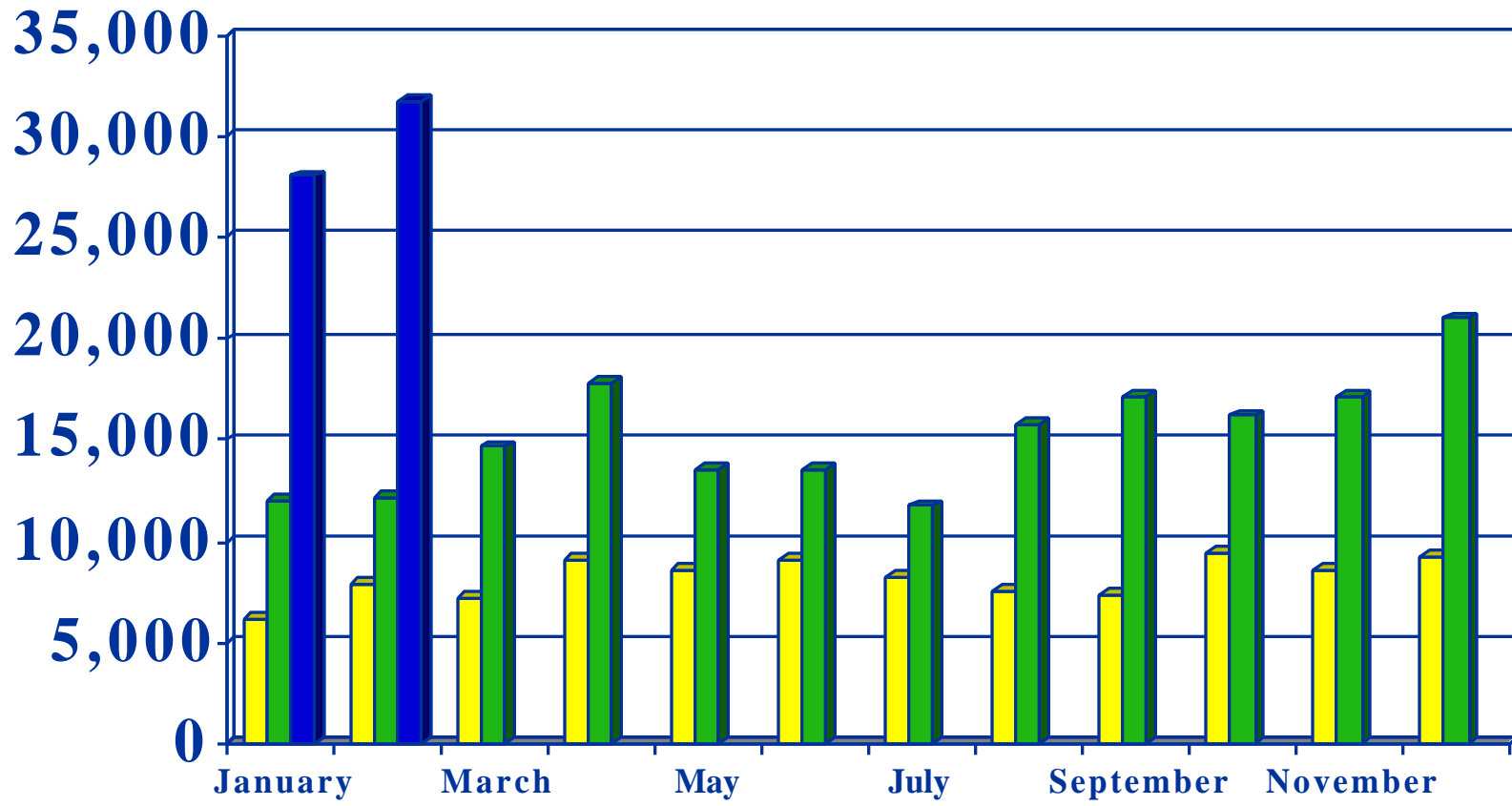


Number of Distinct Hosts Served



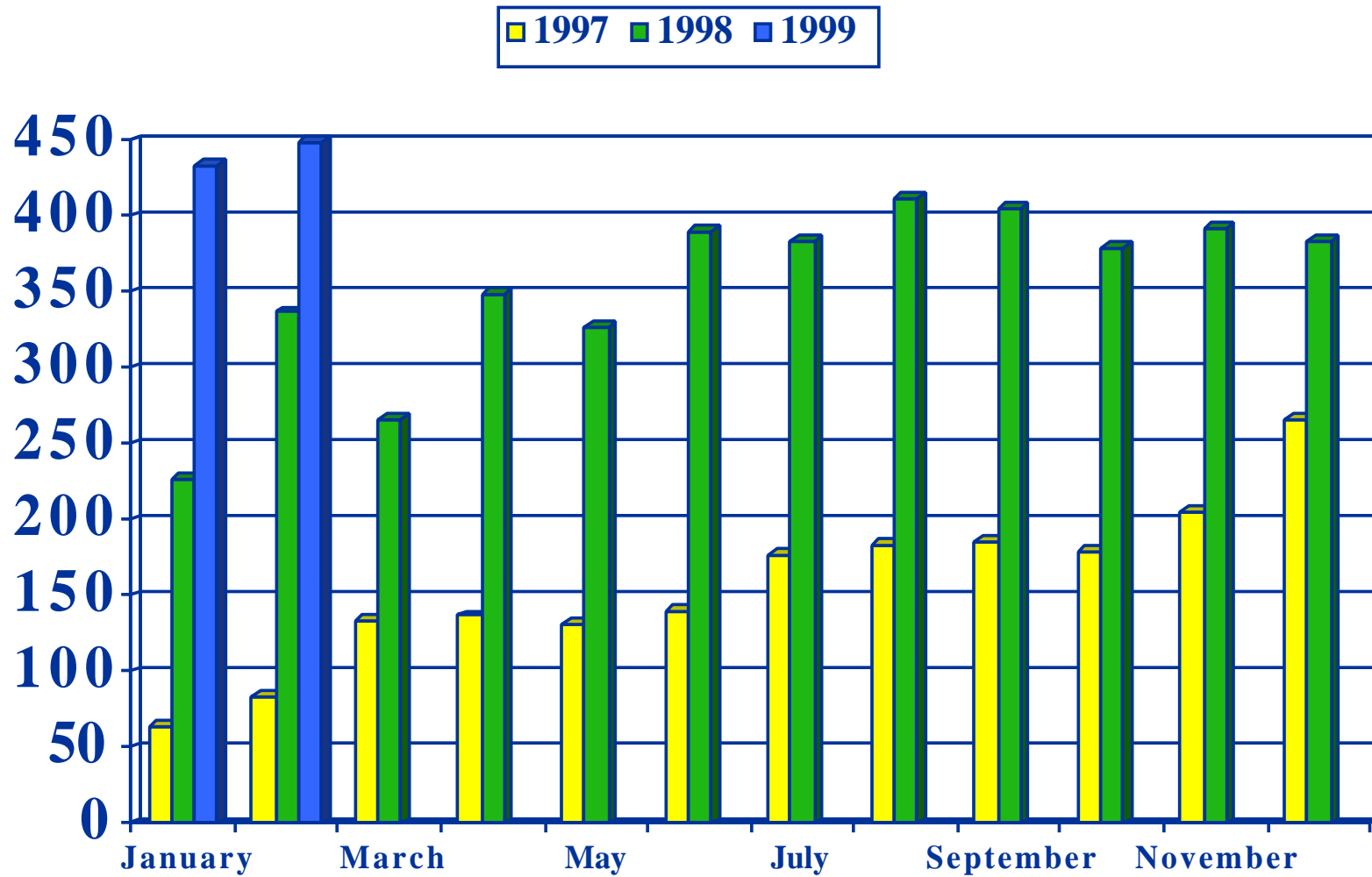
Total Successful Requests

1997 1998 1999



—> Server was down 1 week in July 1998

Number of Distinct Files Requested



MSDIS Dataset Listing and File Descriptions

<http://msdis.missouri.edu/datasets.html>

- **Metadata** is an integral part of the coverages you will find on MSDIS.
- You can use **document.aml** or hyperlink to the **.html** file to access the metadata.
- It is up to you to read and interpret the limitations of the data before you decide to use it.



MSDIS Dataset Listing and File Descriptions

<http://msdis.missouri.edu/datasets.html>

last updated on Thursday, August 13, 1998

- census95/ <--This will take you to the census95 section of this page.
- county/
 - partial/
 - utm/
 - stateplane/
- datafiles/
 - publiclaw/
 - dbffiles/
 - infofiles/
 - stf1a/
 - dbffiles/
 - infofiles/
 - stf3a/
 - dbffiles/
 - infofiles/
 - stf3b/
 - dbffiles/
 - infofiles/
- firm/
- flood_insurance_maps/
- flood93/
- natural/
- tiles/
- soils/
- state/
 - census/
 - natural/
 - vertebrate/
 - political/
 - tiles/
 - transport/
- /pub/census95 <--This will take you to the ftp site.
- cnnntgr1 - county tigerline 95 composite files double
- precision(TIGER) - NAD83
- readme.1st - readme file for TIGER 95 files
- tgr95doc.pdf - .pdf file of full documentation for TIGER95 composite files



MSDIS Dataset Listing and File Descriptions

<http://msdis.missouri.edu/datasets.html>

/pub/county/utm/<countyname>

- **cnnnblk** - block level(TIGER) - UTM, NAD83 - Metadata
- **cnnngrp** - blockgroups(TIGER) - UTM, NAD83 - Metadata
- **cnnntrct** - tracts(TIGER) - UTM, NAD83 - Metadata
- **cnnnnty** - boundary(TIGER) - UTM, NAD83 - Metadata
- **cnnnvtd** - voting districts(TIGER) - UTM, NAD83 - Metadata
- **cnnnmcd** - minor civil divisions(TIGER) - UTM, NAD83 - Metadata
- **cnnnplac** - census designated places(TIGER)- UTM, NAD83 - Metadata
- **cnnn11dh** - 11-digit hydrologic units - UTM, NAD83 - Metadata
- **cnnncong** - U.S. congressional districts - UTM, NAD83 - Metadata
- **cnnndem** - 50 meter res. DEM with 1km buffer; 1:250K -WGS84 - Metadata
- **cnnnfor** - forest coverages - UTM, NAD83 - Metadata
- **cnnngeol** - clip version of DGLS Geologic map-UTM, NAD83-Metadata
- **cnnngnis** - geographic names information system-UTM, NAD83-Metadata
- **cnnnhous** - state House districts - UTM, NAD83 - Metadata
- **cnnnhydr** - hydrography - UTM, NAD83 - Metadata

MSDIS Dataset Listing and File Descriptions

<http://msdis.missouri.edu/datasets.html>

/pub/county/utm/<countyname> - continued

- cnnnlakes - lakes and ponds - UTM, NAD83 - Metadata
- cnnnlulc - land use/land cover - 1:250K USGS DLG - UTM, NAD83 - Metadata
- cnnnphys - physiographic regions - UTM, NAD83 - Metadata
- cnnnplss - public land net - section township range - UTM, NAD83 - Metadata
- cnnnpoli - political districts-House Senate Congress-UTM, NAD83-Metadata
- cnnnpres - Presettlement Prairies - UTM, NAD83 - Metadata
- cnnnpriv - intermediate hydrography w/ some attributes - UTM, NAD83 - Metadata
- cnnnquad - USGS 7.5 minute quadrangles - UTM, NAD83 - Metadata
- cnnnquat - quaternary geology - UTM, NAD83 - Metadata
- cnnnrds - roads - MoDOT - UTM, NAD83 - Metadata
- cnnnsd97 - school district boundaries (1997) - UTM, NAD83 - Metadata
- cnnnsede - school district boundaries (1995) - UTM, NAD83 - Metadata
- cnnnsn91 - state Senate districts - UTM, NAD83 - Metadata
- cnnnstgo - soil sections - UTM, NAD83 - Metadata
- cnnnzip - zip codes - UTM, NAD83 - Metadata

**Note: nnn denotes the county FIPS code. See the FIPS Code Listing page for determining the FIPS code for a county.

MSDIS Dataset Listing and File Descriptions

<http://msdis.missouri.edu/datasets.html>

/pub/datafiles/stf3a/dbffiles

- bgnnn.dbf.gz - Summary Level - (Blockgroup) Summary Tape File 3A-1990 Census Data

/pub/datafiles/stf3a/infocfiles

- bgnnn.dat.e00.gz - Summary Level - (Blockgroup) Summary Tape File 3A-1990 Census Data
- bgstate.dat.e00.gz - Statewide STF3A Summary Level (Blockgroup)
- county.dat.e00.gz - Statewide STF3A Summary Level (County)
- mcd.dat.e00.gz - Statewide STF3A Summary Level (Minor Civil Division)
- modata.e00.gz - Statewide STF3A Summary Level (State)
- place.dat.e00.gz - Statewide STF3A Summary Level (Place)
- placec.dat.e00.gz
- trnnn.dat.e00.gz - Summary Level - (Tract) Summary Tape File 3A-1990 Census Data
- trstate.dat.e00.gz - Statewide STF3A Summary Level (Tract)
- zipstate.dat.e00.gz

MSDIS Dataset Listing and File Descriptions

<http://msdis.missouri.edu/datasets.html>

/pub/partial/firm

- atchcorp - atchison quad boundary - NAD83 - Metadata
- atchflldb - atchison flood boundary per flood ins. rate maps-NAD83-Metadata
- atchpanl - atchison flood insurance rate map panel boundaries- NAD83 - Metadata

The metadata for the remaining coverages in this directory are the same as the coverages above

- fultcorp - fulton quad boundary - NAD83 - Metadata
- fultflldb - fulton flood boundary per flood insurance rate maps-NAD83-Metadata
- fultpanl - fulton flood insurance rate map panel boundaries - NAD83 - Metadata
- marscorp - marshall quad boundary - NAD83 - Metadata
- marsflldb - marshall flood boundary per flood ins. rate maps-NAD83-Metadata
- marspanl - marshall flood insurance rate map panel boundaries-NAD83-Metadata
- nebrcorp - nebraska quad boundary - NAD83 - Metadata
- nebrflldb - nebraska flood boundary per flood ins. rate maps-NAD83-Metadata
- nebrpanl - nebraska flood ins. rate map panel boundaries-NAD83 - Metadata
- jeffcorp - jefferson city quad boundary - NAD83 - Metadata
- jeffflldb - jefferson city flood boundary per flood ins. rate maps-NAD83-Metadata

MSDIS Dataset Listing and File Descriptions

<http://msdis.missouri.edu/datasets.html>

The metadata for the remaining coverages in this directory are the same as the coverages above (Continued)

- jeffpanl - jefferson city flood ins. rate map panel boundaries-NAD83 - Metadata
- mexicorp - mexico quad boundary - NAD83 - Metadata
- mexifldb - mexico flood boundary per flood ins. rate maps - NAD83 - Metadata
- mexipanl - mexico flood ins. rate map panel boundaries-NAD83 - Metadata
- facicorp - falls city quad boundary - NAD83 - Metadata
- facifldb - falls city flood boundary per flood ins. rate maps - NAD83 - Metadata
- facipanl - falls city flood ins. rate map panel boundaries-NAD83 - Metadata
- stjocorp - st. joseph quad boundary - NAD83 - Metadata
- stjofldb - st. joseph flood boundary per flood ins. rate maps-NAD83-Metadata
- stjopanl - st. joseph flood ins. rate map panel boundaries-NAD83-MetadataD27
- kanscorp - kansas city quad boundary - NAD83 - Metadata
- kansflldb - kansas city flood boundary per flood ins. rate maps-NAD83-Metadata
- kanspanl - kansas city flood ins. rate map panel boundaries -NAD83 - Metadata
- mobecorp - moberly quad boundary - NAD83 - Metadata
- mobefldb - moberly flood boundary per flood ins. rate maps-NAD83 - Metadata
- mobepanl - moberly flood ins. rate map panel boundaries-NAD83-Metadata¹⁸

MSDIS Dataset Listing and File Descriptions

<http://msdis.missouri.edu/datasets.html>

/pub/partial/flood_insurance_maps

- **cnnnq3** - flood insurance boundary(Q3) maps w/o BFEs and cross-sections - NAD83 - Metadata
- **bnnnq3** - flood insurance boundary(Q3) maps with BFEs and cross-sections - NAD83 - Metadata
- **nnn** denotes county FIPS code. See the FIPS Code Listing page for determining the FIPS code for a county.
- The original metadata and for each coverage from the CD is available on the FTP site with the coverages.

MSDIS Dataset Listing and File Descriptions

<http://msdis.missouri.edu/datasets.html>

/pub/partial/flood93

- pdikes - Missouri River dikes and revetments - NAD83 - Metadata
- pf93ext - Missouri River 1993 Flood extent - NAD83 - Metadata
- pfdamage - Missouri River floodplain damage - NAD83 - Metadata
- pforest - Missouri River floodplain forest cover - NAD83 - Metadata
- pfp100 - Missouri River 100 year floodplain - NAD83 - Metadata
- pfp500 - Missouri River 500 year floodplain - NAD83 - Metadata
- pfplains - Missouri River floodplains - 100 and 500 year - NAD83 - Metadata
- pfpriv - Missouri River hydrography - NAD83 - Metadata
- pfway - floodway of Missouri River - NAD83 - Metadata
- plevdamg - Missouri River levee damage - NAD83 - Metadata
- pmolev - Missouri River levees - NAD27
- privbnd - Missouri River boundaries - NAD83 - Metadata
- privmile - Missouri River river miles - NAD83 - Metadata
- ptplines - Missouri River pipelines and transmission lines - NAD83 - Metadata

MSDIS Dataset Listing and File Descriptions

<http://msdis.missouri.edu/datasets.html>

/pub/partial/natural

- pmissriv - Mississippi River boundary - NAD83 - Metadata

/pub/partial/tiles

- pquad-e - USGS 7.5 minute quadrangle boundaries - east - NAD83 - Metadata
- pquad-nw - USGS 7.5 minute quadrangle boundaries - north west - NAD83 - Metadata
- pquad-sw - USGS 7.5 minute quadrangle boundaries - south west - NAD83 - Metadata
- pquad-ne - USGS 7.5 minute quadrangle boundaries - north east - NAD83 - Metadata
- pquad-se - USGS 7.5 minute quadrangle boundaries - south east - NAD83 - Metadata
- pquad-w - USGS 7.5 minute quadrangle boundaries - west - NAD83 - Metadata

MSDIS Dataset Listing and File Descriptions

<http://msdis.missouri.edu/datasets.html>

/pub/soils/pressurgo

- countyname - subdirectory of county soils coverages (by quad) and related files from CARES / MDNR /
- NRCS - NAD27 - Metadata
- readme.txt - disclaimer for soils coverages. **PLEASE READ!**
- soilsurv.met - metadata in text format for soils coverages and related files.

/pub/soils/ssurgo

- As the soils coverages are SSURGO certified by NRCS they are being added to this directory and the corresponding soils data from the pressurgo directory are being deleted. Once the entire state is completed you will find the SSURGO soils datasets under /pub/soils. NAD83. See text files for metadata.

MSDIS Dataset Listing and File Descriptions

<http://msdis.missouri.edu/datasets.html>

/pub/state/natural

- dnrparks - 1:24000 scale. Coverage delineating DNR-owned lands in Missouri-
This file should not be used as the final authority on the exact locations of boundaries. -NAD83
- Metadata modem100 - 100 meter resolution digital elevation model (DEM)
extending 5 km outside Missouri state border-WGS84 -Metadata
- s11dhydr - state 11 digit hydrologic units - NAD83 - Metadata
- schemcov - 1:24000 scale. Point coverage of Selected Chemical Sites in Missouri
- NAD83 - Metadata
- schmpoly - 1:24000 scale. Polygon coverage of Selected Chemical Sites in
Missouri - NAD83 - Metadata
- scriticl -1:24000 scale. Selected critical watersheds; 10 CSR 20-6.300
Concentrated Animal Feeding Operations-NAD83-Metadata
- sdealcov - 1:24000 scale. Past and Present Pesticide Applicators and Operators
(points) - NAD83 - Metadata
- sdlrpoly - 1:24000 scale. Past and Present Pesticide Applicators and Operators
(areas) - NAD83 - Metadata
- secosect - 1:100000 scale. Revised July 1997. Sections & subsections combined
w/attributes for size & names-NAD83-Metadata
- sfault - state geologic faults - NAD83 - Metadata
- sgages - USGS river gages for Missouri - NAD83 - Metadata

MSDIS Dataset Listing and File Descriptions

<http://msdis.missouri.edu/datasets.html>

- sgeol - 1:500000 scale. Geologic Map of Missouri - NAD83 - Metadata
- shydron - state hydrography with "losing stream" attribute - NAD83 - Metadata
- simpreg - 1:24K. Pub Drink Water Lake Intake Drain Basins-NAD83- Metadata
- slakes - state lakes and ponds with attributes per MDNR - NAD83 - Metadata
- slulc - state land use / land cover 1:250K USGS DLG - NAD83 - Metadata
- sphysio - state physiography - NAD83 - Metadata
- spreset - state historic presettlement prairie - NAD83 - Metadata
- sprivers - state intermediate hydrography with some attributes- NAD83 - Metadata
- spwsrint - 1:24000 scale. Public Drinking Water River Intakes-NAD83 - Metadata
- spwssint - 1:24000 scale. Public Drinking Water Lake Intakes- NAD83 - Metadata
- spwsspng - 1:24000 scale. Public Drinking Water Springs - NAD83 - Metadata
- spwswell - 1:24000 scale. Public Drinking Water Wellheads - NAD83 - Metadata
- squalwat -1:2500000 scale. Nat. Ground Water Quality of MO-NAD83-Metadata
- squatgeo - state quaternary geology - NAD83 - Metadata
- sstatgo - state soils - STATSGO - NAD83 - Metadata
- swdist - 1:24000 scale. Public Drinking Water Water Districts-NAD83 - Metadata

MSDIS Dataset Listing and File Descriptions

<http://msdis.missouri.edu/datasets.html>

The following six coverages were produced by the Mark Twain National Forest. If you have any questions about these coverages, please contact:

Mike Schanta; U.S.D.A. Forest Service,
Mark Twain National Forest; Forest GIS Coordinator
401 Fairgrounds Road; Rolla, Missouri 65401
voice: (573) 341-7447; fax: (573) 341-7475
mschanta/r9_marktwain@fs.fed.us



- mtlta - 1:126000 scale. Polygon coverage of Land Type Associations found on the Mark Twain National Forest - NAD83 - Metadata
- mtmgtare - 1:24000 scale. Polygon coverage delineating the Land and Resource Management Plan (LRMP) for the Mark Twain National Forest - NAD83 - Metadata
- mtown - 1:24000 scale. Ownership coverage for the Mark Twain National Forest contains lines and polygon attributes for areas within National Forest boundaries in Missouri - NAD83 - Metadata
- mtquads - 1:24000 scale. Polygon coverage of the 7.5 minute quadrangles that cover the ownership of the Mark Twain National Forest - NAD83 - Metadata
- mtrdbnds - 1:24000 scale. Polygon coverage of the Mark Twain National Forest Ranger Districts - NAD83- Metadata
- mtwild - 1:24000 scale. Polygon coverage that delineates the Congressionally designated Wilderness within the Mark Twain National Forest - NAD83 - Metadata

MSDIS Dataset Listing and File Descriptions

<http://msdis.missouri.edu/datasets.html>

/pub/state/natural/vertebrate

- sherp - directory of species range and distribution data; state level - metadata included - NAD83

MSDIS Dataset Listing and File Descriptions

<http://msdis.missouri.edu/datasets.html>

/pub/state/political

- scong91 - state congressional districts - NAD83 - Metadata
- shous91 - state house districts - NAD83 - Metadata
- spoli91 - state political districts - House Senate Congress - NAD83 - Metadata
- ssen91 - state senatorial districts - NAD83 - Metadata

MSDIS Dataset Listing and File Descriptions

<http://msdis.missouri.edu/datasets.html>

/pub/state/tiles

- s100k - state USGS 100 K boundaries - NAD83 - Metadata
- sborder - state border - NAD83 - Metadata
- scounty2 - county boundaries - NAD83 - Metadata
- sgnis - state geographic names database - NAD83 - Metadata
- squads - state USGS 7.5 minute boundaries - NAD83 - Metadata

MSDIS Dataset Listing and File Descriptions

<http://msdis.missouri.edu/datasets.html>

/pub/state/transport

- **sairport** - state Missouri airports -pt. coverage -single prec -NAD83 - Metadata
- **shwymo1** - state Missouri highways - USGS DLG - single precision - NAD27
- **shwymo2** - state Missouri highways - USGS DLG - double precision - NAD27
- **shwysis1** - state interstate highways - USGS DLG - single precision - NAD27
- **shwysis2** - state interstate highways - USGS DLG - double precision - NAD27
- **shwyrtr** - state Missouri lettered routes - USGS DLG - NAD27
- **shwyrus** - state US highways - USGS DLG - NAD27
- **sprimrds** - state primary roads - USGS DLG - NAD27
- **srails** - state rail roads - SDTS/DLG - NAD83 - Metadata
- **sstatsys** - state transportation system - USGS DLG - NAD27

<http://msdis.missouri.edu>

MSDIS is located within the
University of Missouri-Columbia
Department of Geography

For more information contact:

Timothy L. Haithcoat
Program Director
18 Stewart Hall
University of Missouri
Columbia, MO 65211
Voice: (573) 882-1404
Fax: (573) 884-4239
haithcoatt@missouri.edu

Gregory S. Breuer
Programmer/Analyst
20 Stewart Hall
University of Missouri
Columbia, MO 65211
Voice: (573) 884-7802
Fax: (573) 884-4239
breuerg@missouri.edu

