

# FAPRI-Ireland 2001 EU Baseline Briefing Book

---

## FAPRI-UMC Technical Data Report 04-01

**May 2001**

Julian Binfield  
Trevor Donnellan  
Kevin Hanrahan  
Kieran McQuinn  
Pat Westhoff  
Robert Young II



Food and Agricultural Policy Research Institute  
(FAPRI)  
College of Agriculture, Food and Natural Resources  
University of Missouri  
Columbia, Missouri 65203  
U.S.A.  
[www.fapri.missouri.edu](http://www.fapri.missouri.edu)

Contact: Pat Westhoff  
573 882 4647  
[Westhoffp@missouri.edu](mailto:Westhoffp@missouri.edu)

FAPRI-Ireland Partnership  
Teagasc  
19 Sandymount Avenue  
Ballsbridge  
Dublin 4  
Ireland  
[www.tnet.teagasc.ie/fapri/](http://www.tnet.teagasc.ie/fapri/)

Contact: Paul Kelly  
01 6376050  
[Pkelly@hq.teagasc.ie](mailto:Pkelly@hq.teagasc.ie)



# Foreword

---

In April 2001, members of the FAPRI-Ireland partnership prepared baseline projections for European Union cereal, oilseed, meat, and dairy markets. These projections represent our best estimate of what EU markets would look like under a very specific set of assumptions. The baseline assumes that:

- World agricultural markets evolve in a manner consistent with FAPRI's January 2001 projections.
- Current farm and trade policies remain in place. Agenda 2000 reforms are implemented according to agreed schedules.
- Average weather conditions prevail around the world, and crop yields grow in line with past trends.
- The EU and world economies grow in line with forecasts prepared by DRI.

We recognize that these assumptions will be violated in the real world, and so it should come as no surprise that actual market outcomes will never precisely match those in the baseline. The principal purpose of the baseline is not to predict the future, but rather to serve as a benchmark for analyzing alternative policies. With those caveats in mind, here are some features of this baseline:

- Given baseline world commodity prices, exchange rates, and policies, the European Union may be able to export increasing amounts of wheat without the use of explicit export subsidies. Under the conditioning assumptions of the baseline, EU cereal prices are supported at least as much by exports at world prices as by intervention buying.
- Foot and mouth disease (FMD) and bovine spongiform encephalopathy (BSE) outbreaks have caused great disruption in livestock markets. The reductions in consumer demand for beef caused by BSE concerns are projected to depress market prices for beef for several years.
- EU milk prices are projected to remain flat until the reductions in intervention prices and increases in production quotas included in Agenda 2000 go into effect in 2005. From 2005-2007, milk prices fall, but by significantly less than the 15 percent reduction in butter and skim milk powder intervention prices.

The baseline was prepared in April 2001 using information from Eurostat, the European Commission, the U.S. Department of Agriculture, press reports, and a variety of other sources. In general, figures for 2000 and earlier years are based on official estimates, while figures for 2001 and subsequent years represent our projections.

The projections do not incorporate possible effects of the accession of Central and Eastern European countries to the European Union, as the terms of accession have not been decided. Likewise, current WTO obligations are simply rolled forward at current levels. In these and other ways, the baseline projections are distinct from a forecast of "most likely" outcomes.

The FAPRI-Ireland Partnership baseline is a joint effort of the Food and Agricultural Policy Research Institute at the University of Missouri and Teagasc, Ireland's Agriculture and Food Development Authority. The January 2001 FAPRI global baseline was developed by FAPRI analysts at the University of Missouri and Iowa State University.



# Table of Contents

---

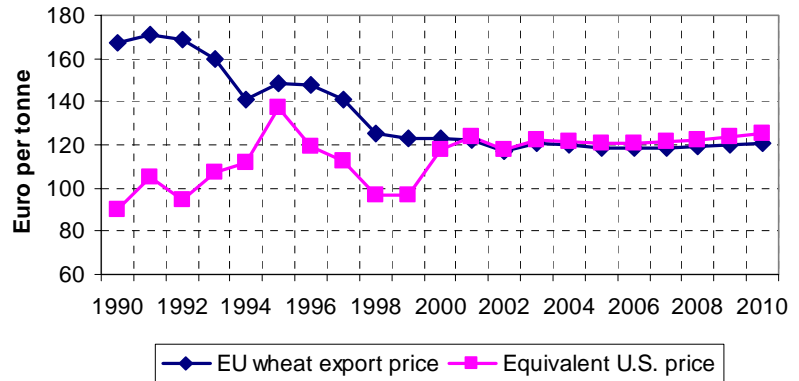
Foreword	3
Baseline issues	6
Policy assumptions	8
Macroeconomic assumptions	10
World agricultural commodity prices	12
<b>EU projections</b>	
EU wheat	14
EU barley and maize	16
EU oilseeds	18
EU cereal and oilseed area	22
EU cereal prices	24
EU livestock	26
EU meat	28
EU livestock and meat prices	30
EU dairy	32
EU dairy prices	34
<b>Individual country projections</b>	
French tables	36
German tables	40
Irish tables	44
Italian tables	48
UK tables	52
Other EU tables	56

# Baseline issues

- For most of the 1990s, **EU wheat prices** were well above those prevailing in world markets. Exports required export subsidies, often large.

- Lower EU intervention prices, a stronger world wheat market, and a weak euro combine to **close the gap** between world and EU wheat prices.

**EU and U.S. export prices for comparable grades of wheat, before application of export subsidies**

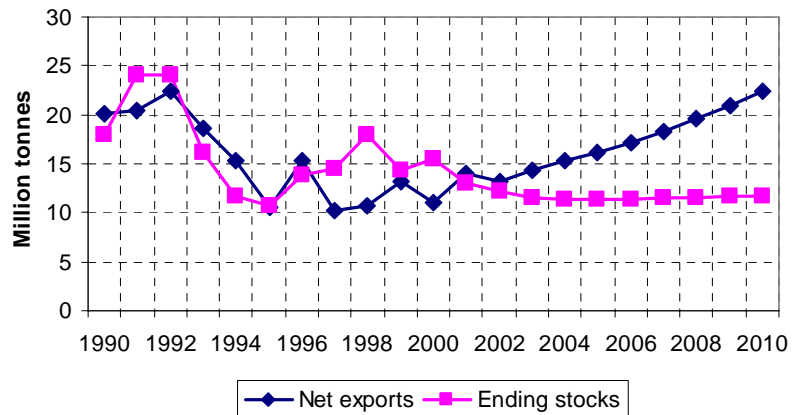


- With EU wheat prices at world levels, the European Union can increase **wheat exports** without explicit export subsidies, thus avoiding WTO limits.

- EU stocks** of wheat and other cereals remain low, as market prices generally exceed intervention prices.

- This favorable outlook is very **sensitive** to policy and exchange rate assumptions and world price projections.

**EU wheat trade and stocks**

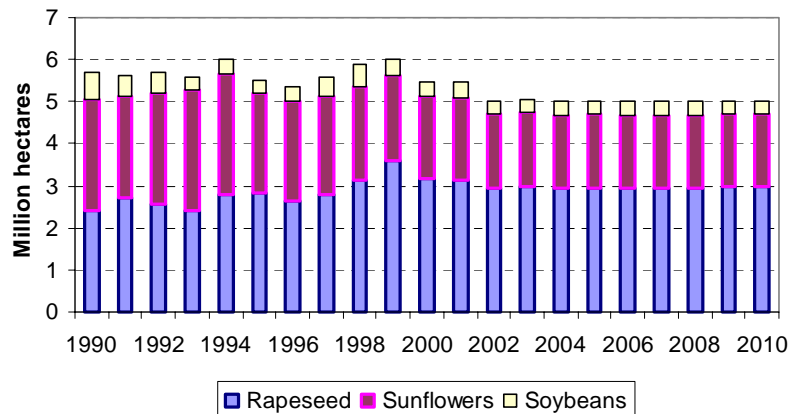


- Reductions in **oilseed** area payments contributed to a decline in oilseed area in 2000.

- Weather** that made it difficult to sow winter wheat last fall may encourage producers to maintain 2001 plantings of spring oilseeds near 2000 levels.

- Oilseed area could decline again in **2002**, given further payment reductions.

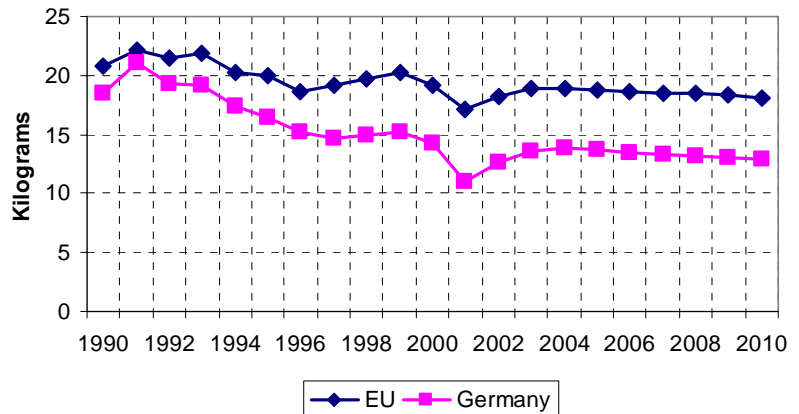
**EU oilseed area**



# Baseline issues

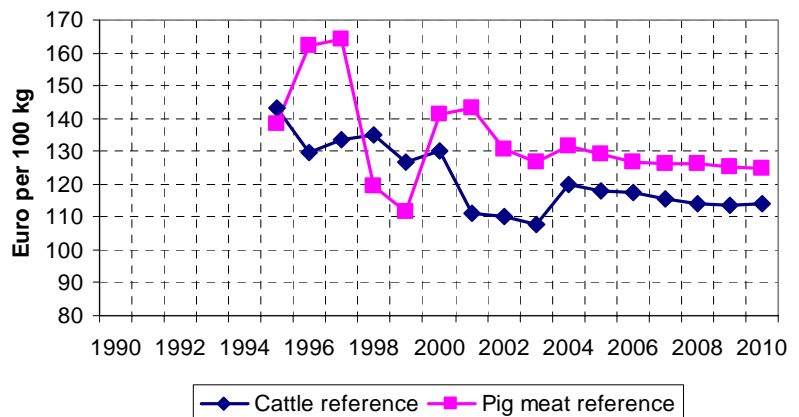
- Recent **BSE** outbreaks have severely hurt consumer demand for beef.
- Relative to 1999, projected 2001 **beef consumption** per capita is reduced by 28 percent in Germany and 16 percent in the EU-15. Year-to-date numbers imply an even larger consumption effect.
- The baseline assumes a **recovery** in beef demand between 2001 and 2004. After 2004, the long-term negative trend in beef consumption resumes.

Beef consumption per capita



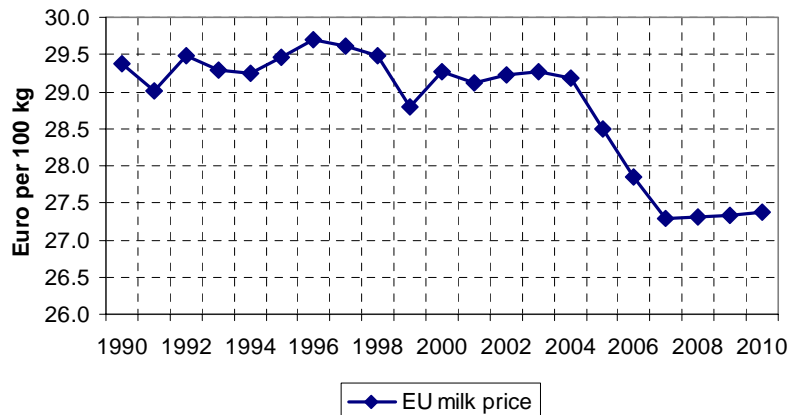
- Lower beef demand results in a 15 percent reduction in EU **cattle prices** in 2001 vs. 2000.
- Cattle prices do not improve until **stocks** are reduced by improved demand in 2004.
- Pig meat prices** continue strong in 2001, as consumers shift away from beef. Supplies induced by high 2001 prices result in lower pig meat prices in 2002.

EU livestock prices



- A strong world market in 2000 for **skim milk powder** resulted in more EU exports, lower EU stocks, and improved milk prices.
- From 2005 to 2007, the **Agenda 2000** increase in milk quotas and reduction in intervention prices result in a decline in milk prices.
- With low baseline stocks of skim milk powder, the decline in **market** prices is less than the decline in intervention prices.

EU milk prices (3.7% fat)

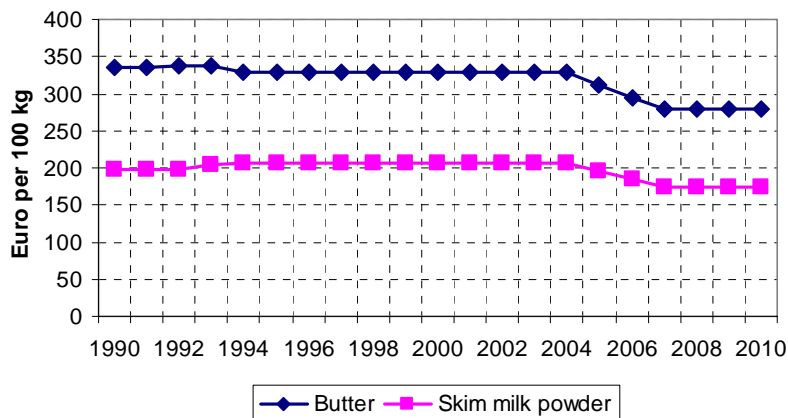


# Policy assumptions

- The baseline incorporates Agenda 2000 reductions in **dairy intervention prices** starting in 2005.

- Likewise, Agenda 2000 adjustments to intervention prices and **compensatory payments** for other commodities are incorporated.

Dairy intervention prices

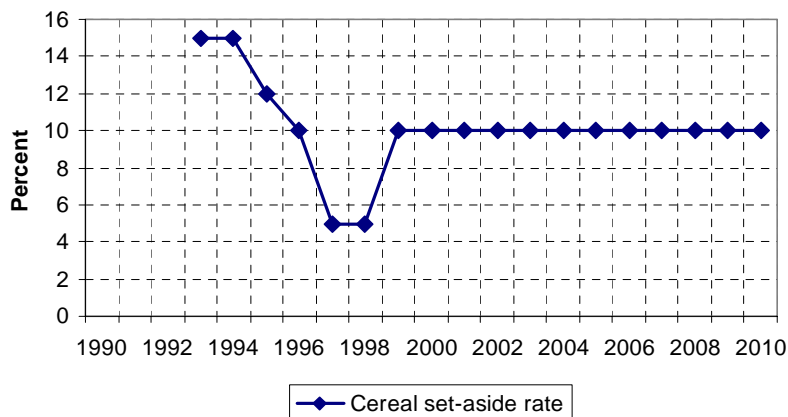


- The baseline holds the **cereal set-aside** rate at 10 percent. This level avoids any build-up of intervention stocks.

- In general, the baseline assumes that the **Commission** will continue to manage markets as it has in the recent past.

- Consistent with recent Commission behaviour, EU **exports** of butter and beef are generally less than WTO limits on subsidised exports.

Cereal mandatory set-aside rate



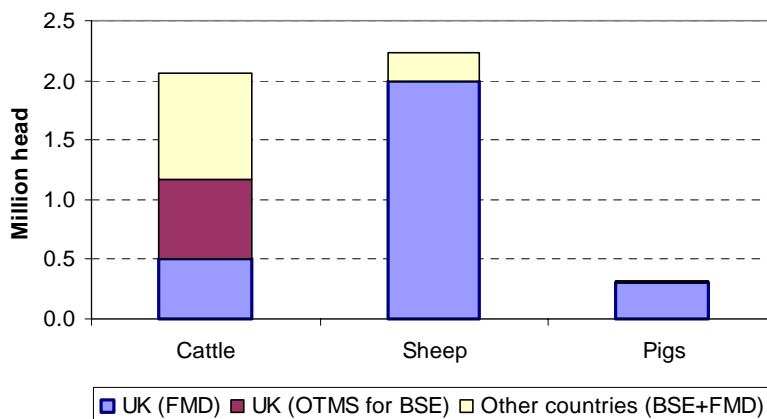
- Foot and Mouth Disease (FMD)** is assumed to result in the destruction of 500,000 cattle and 2 million sheep in the UK in 2001, but none in later years.

- FMD-related destruction in other countries is assumed to be minor.

- The **Over Thirty Month Scheme (OTMS)** is continued indefinitely in the UK.

- Almost 900,000 cattle, most in France in Ireland, are destroyed in 2001 as part of other measures to relieve **BSE**-related oversupply of beef.

2001 animal destruction for BSE and FMD





## Policy assumptions

	2000	2001	2002	2003	2004	2005	2006	2007	2008	2009	2010
	euro per tonne										
Cereal intervention price	110.3	101.3	101.3	101.3	101.3	101.3	101.3	101.3	101.3	101.3	101.3
Cereal compensation	58.7	63.0	63.0	63.0	63.0	63.0	63.0	63.0	63.0	63.0	63.0
Oilseed compensation	81.7	72.4	63.0	63.0	63.0	63.0	63.0	63.0	63.0	63.0	63.0
	euro per 100 kg										
Beef intervention price	324.2	301.3	278.0	243.3	243.3	243.3	243.3	243.3	243.3	243.3	243.3
Butter intervention price	328.2	328.2	328.2	328.2	328.2	311.8	295.4	279.0	279.0	279.0	279.0
SMP intervention price	205.5	205.5	205.5	205.5	205.5	195.2	185.0	174.7	174.7	174.7	174.7
Sheep meat basic price	504.1	504.1	504.1	504.1	504.1	504.1	504.1	504.1	504.1	504.1	504.1
	euro per head										
Male bovine premium	163.0	182.0	200.0	200.0	200.0	200.0	200.0	200.0	200.0	200.0	200.0
Suckler cow premium	160.0	185.0	210.0	210.0	210.0	210.0	210.0	210.0	210.0	210.0	210.0
	percent										
Cereal set-aside	10.0	10.0	10.0	10.0	10.0	10.0	10.0	10.0	10.0	10.0	10.0
	million tonnes										
Milk quota (applied)	118.4	118.9	118.9	118.9	118.9	119.4	119.8	120.3	120.3	120.3	120.3
	million head										
Suckler cow quota	10.8	10.8	10.8	10.8	10.8	10.8	10.8	10.8	10.8	10.8	10.8
Animals destroyed											
Cattle (OTMS in UK)	0.7	0.7	0.6	0.6	0.6	0.6	0.6	0.6	0.6	0.6	0.6
Cattle (other BSE, FMD)	0.0	1.4	0.4	0.1	0.0	0.0	0.0	0.0	0.0	0.0	0.0
Sheep (FMD)	0.0	2.2	0.0	0.0	0.0	0.0	0.0	0.0	0.0	0.0	0.0
Pigs (FMD)	0.0	0.3	0.0	0.0	0.0	0.0	0.0	0.0	0.0	0.0	0.0
Subsidised export limits	thousand tonnes										
Wheat	14,400	14,400	14,400	14,400	14,400	14,400	14,400	14,400	14,400	14,400	14,400
Coarse grains	10,800	10,800	10,800	10,800	10,800	10,800	10,800	10,800	10,800	10,800	10,800
Beef	822	822	822	822	822	822	822	822	822	822	822
Pig meat	444	444	444	444	444	444	444	444	444	444	444
Poultry	286	286	286	286	286	286	286	286	286	286	286
Cheese	321	321	321	321	321	321	321	321	321	321	321
Butter	399	399	399	399	399	399	399	399	399	399	399
Skim milk powder	273	273	273	273	273	273	273	273	273	273	273
Other dairy products	958	958	958	958	958	958	958	958	958	958	958
Tariff rate quotas											
Wheat	350	350	350	350	350	350	350	350	350	350	350
Coarse grains	2,831	2,831	2,831	2,831	2,831	2,831	2,831	2,831	2,831	2,831	2,831
Beef	76	76	76	76	76	76	76	76	76	76	76
Pig meat	30	30	30	30	30	30	30	30	30	30	30
Poultry	280	280	280	280	280	280	280	280	280	280	280
Cheese	102	102	102	102	102	102	102	102	102	102	102
Butter	87	87	87	87	87	87	87	87	87	87	87
Skim milk powder	68	68	68	68	68	68	68	68	68	68	68

# Macroeconomic assumptions

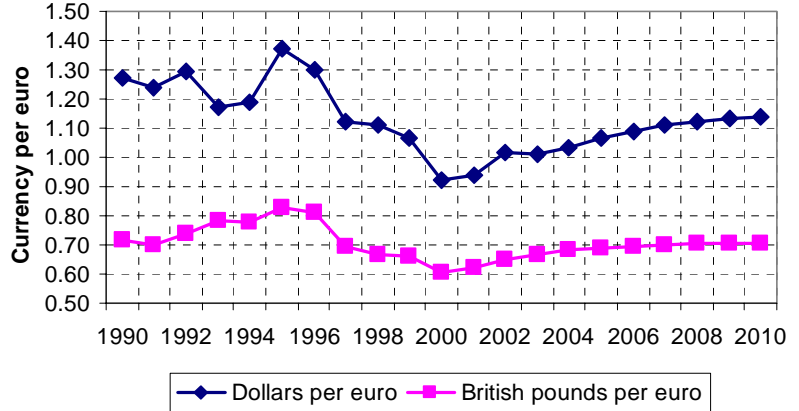
- Macroeconomic assumptions underlying the baseline are from winter 2000/2001 forecasts by **Standard and Poor's DRI**.

- The **euro** strengthens relative to the dollar, surpassing \$1.00 per euro in 2002 and \$1.10 per euro in 2007.

- The euro also strengthens relative to the **British pound**.

- While the euro strengthens, it remains weak relative to levels of the early 1990s.

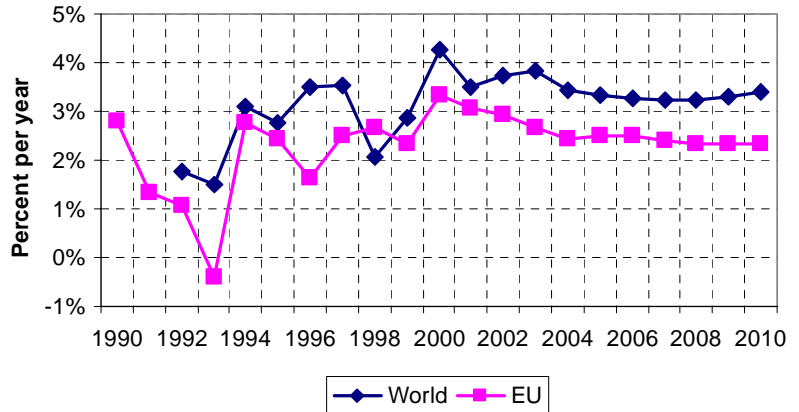
Euro exchange rates



- EU and world **economic growth** slows compared to 2000, but remains strong relative to the average of the 1990s.

- The DRI forecast used here was prepared several months ago, and may not reflect recent signs of **weakness** in the EU and global economies.

Real GDP growth

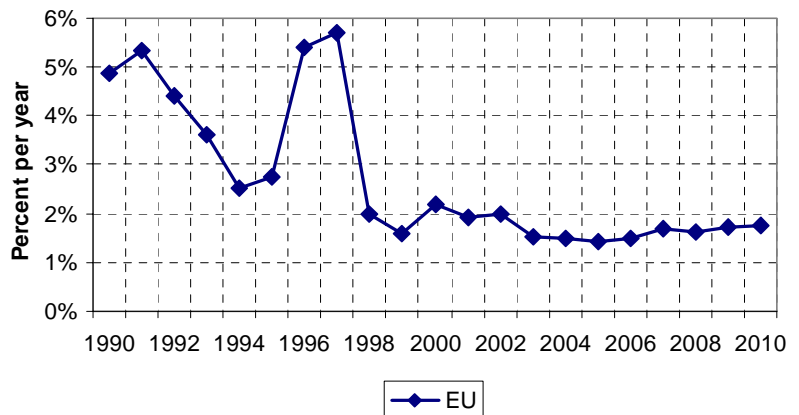


- **EU inflation**, as measured by changes in the GDP deflator, remains low.

- After a sharp increase in 2000, **petroleum** prices decline from 2001-2005.

- The general macroeconomic outlook is favorable for EU agriculture, given strong global growth and low inflation. However, the strengthening euro could negatively affect the competitiveness of EU exports.

Inflation (GDP deflator)



## Macroeconomic assumptions

	2000	2001	2002	2003	2004	2005	2006	2007	2008	2009	2010
<b>Real GDP growth</b>											
	percent										
EU-15	3.3%	3.1%	2.9%	2.7%	2.4%	2.5%	2.5%	2.4%	2.3%	2.3%	2.3%
France	3.4%	3.2%	2.9%	2.7%	2.0%	2.1%	2.1%	1.9%	1.9%	2.0%	2.1%
Germany	3.2%	3.0%	2.9%	2.7%	2.4%	2.5%	2.6%	2.7%	2.5%	2.4%	2.4%
Ireland	7.5%	7.5%	4.9%	4.6%	4.7%	4.7%	4.1%	4.1%	4.2%	4.2%	4.3%
Italy	2.9%	2.5%	2.8%	2.4%	2.4%	2.7%	2.7%	2.7%	2.6%	2.5%	2.3%
United Kingdom	3.1%	2.9%	3.2%	2.8%	2.3%	2.1%	2.5%	2.3%	2.2%	2.3%	2.4%
Other EU	3.7%	3.3%	2.8%	2.6%	2.7%	2.7%	2.5%	2.3%	2.3%	2.3%	2.3%
<b>Inflation (GDP deflator)</b>											
	percent										
EU-15	2.2%	1.9%	2.0%	1.5%	1.5%	1.4%	1.5%	1.7%	1.6%	1.7%	1.8%
France	0.6%	1.6%	1.8%	1.5%	1.2%	1.2%	1.3%	1.5%	1.5%	1.5%	1.6%
Germany	-0.1%	1.6%	1.7%	1.1%	1.6%	1.3%	1.2%	1.3%	1.4%	1.4%	1.5%
Ireland	6.0%	5.0%	3.0%	2.9%	2.8%	2.8%	2.8%	2.8%	2.7%	2.8%	2.7%
Italy	1.5%	1.6%	1.8%	1.2%	1.1%	1.3%	1.4%	1.4%	1.6%	1.7%	1.9%
United Kingdom	2.2%	2.9%	2.6%	2.3%	2.1%	2.0%	2.0%	2.6%	2.0%	2.2%	2.1%
<b>Exchange rate vs. dollar</b>											
	currency per dollar										
EU-15	1.09	1.06	0.98	0.99	0.97	0.94	0.92	0.90	0.89	0.88	0.88
France	7.12	6.98	6.46	6.49	6.33	6.16	6.01	5.91	5.84	5.80	5.77
Germany	2.12	2.08	1.93	1.94	1.89	1.84	1.79	1.76	1.74	1.73	1.72
Ireland	0.85	0.84	0.78	0.78	0.76	0.74	0.72	0.71	0.70	0.70	0.69
Italy	2,101	2,060	1,907	1,917	1,869	1,818	1,775	1,743	1,724	1,712	1,703
United Kingdom	0.66	0.66	0.64	0.66	0.66	0.65	0.64	0.63	0.63	0.62	0.62
<b>Exchange rate vs. euro</b>											
	currency per euro										
France	6.56	6.56	6.56	6.56	6.56	6.56	6.56	6.56	6.56	6.56	6.56
Germany	1.96	1.96	1.96	1.96	1.96	1.96	1.96	1.96	1.96	1.96	1.96
Ireland	0.79	0.79	0.79	0.79	0.79	0.79	0.79	0.79	0.79	0.79	0.79
Italy	1,936	1,936	1,936	1,936	1,936	1,936	1,936	1,936	1,936	1,936	1,936
United Kingdom	0.61	0.62	0.65	0.66	0.68	0.69	0.69	0.70	0.70	0.70	0.70
<b>Other exchange rates</b>											
Dollars per euro	0.92	0.94	1.02	1.01	1.04	1.07	1.09	1.11	1.12	1.13	1.14
Dollars per Br. pound	1.52	1.51	1.57	1.52	1.52	1.55	1.57	1.58	1.59	1.61	1.61
Euro per British pound	1.65	1.61	1.54	1.50	1.46	1.46	1.44	1.42	1.42	1.42	1.42
Irish pound/Br. pound	1.30	1.27	1.21	1.18	1.15	1.15	1.14	1.12	1.12	1.12	1.12
<b>Population</b>											
	million										
EU-15	376.08	376.93	377.74	378.52	379.31	380.00	380.65	381.23	381.78	382.29	382.75
France	58.90	59.16	59.41	59.65	59.89	60.12	60.34	60.56	60.78	60.98	61.18
Germany	82.24	82.32	82.34	82.32	82.29	82.22	82.16	82.10	82.01	81.89	81.75
Ireland	3.79	3.82	3.85	3.89	3.92	3.96	4.00	4.04	4.08	4.13	4.17
Italy	57.48	57.52	57.59	57.69	57.77	57.84	57.90	57.94	57.98	58.03	58.07
United Kingdom	59.35	59.48	59.61	59.74	59.93	60.09	60.26	60.38	60.51	60.64	60.77
Other EU	114.33	114.64	114.94	115.23	115.50	115.77	115.99	116.21	116.42	116.62	116.82

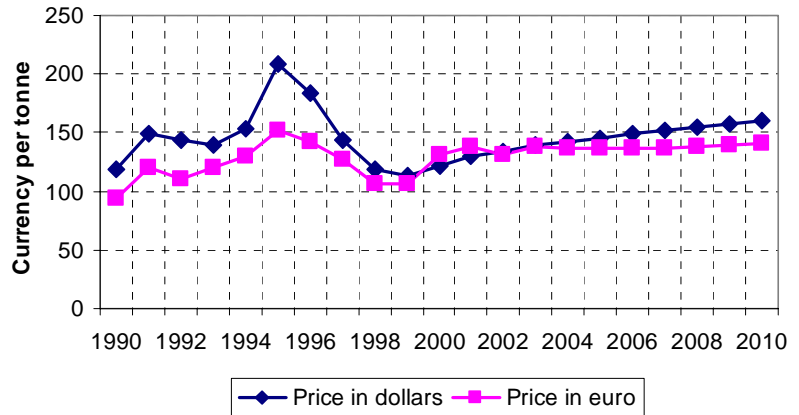
# World agricultural commodity prices

- In dollar terms, world prices for wheat and other **cereals** remained weak in 2000, but a slow recovery is projected for 2001-2010.

- The weakening of the **euro** meant that world cereal prices as measured in euro increased substantially in 2000.

- In the projection period, increases in dollar prices for cereals are offset by the assumed strengthening of the euro, leaving world prices measured in euro **flat**.

U.S. Gulf wheat prices

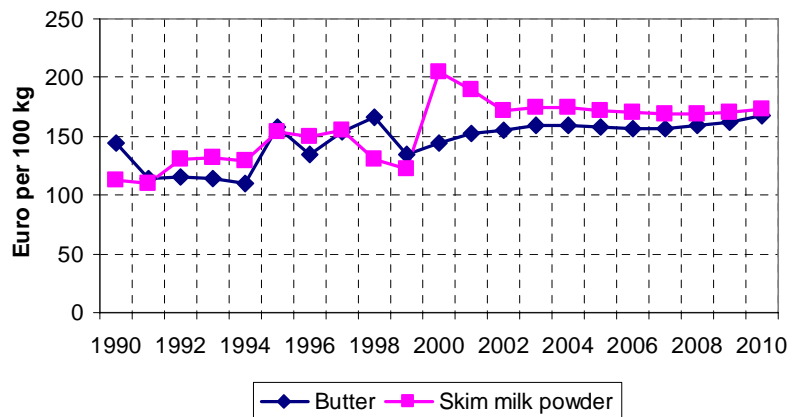


- World prices for **skim milk powder** (SMP) jumped in 2000, facilitating increased EU exports.

- The strengthening euro keeps world SMP prices well below their 2000 peak.

- World **butter** prices do strengthen somewhat, but EU domestic prices remain far above world market prices.

Dairy prices, FOB northern Europe

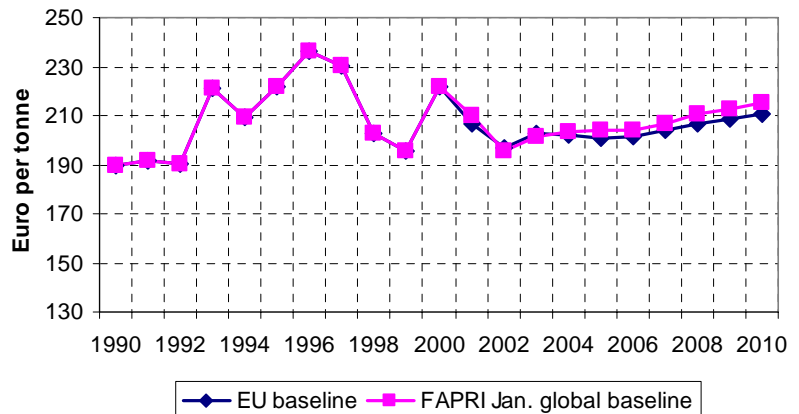


- World **oilseed** prices weaken in terms of euro in 2001 and 2002 and remain low throughout the projection period.

- For all world markets, the EU baseline assumes the world market conditions of FAPRI's January 2001 **global baseline**.

- World prices in this baseline differ from the January baseline very slightly, as modest differences in EU trade translate to small differences in world prices.

Soybean prices, CIF Rotterdam



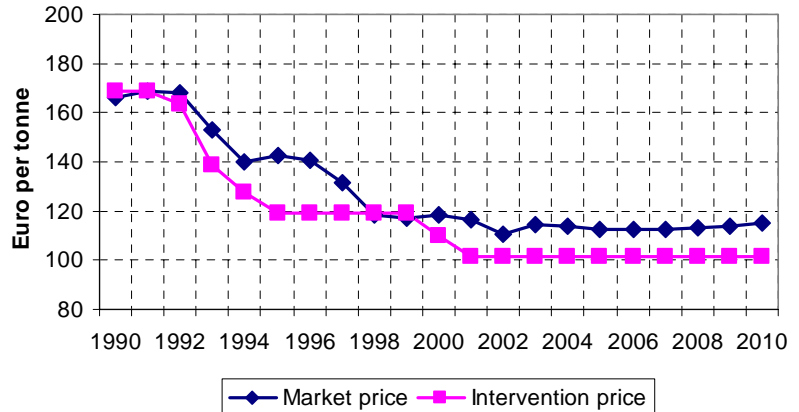
## World agricultural commodity prices

	2000	2001	2002	2003	2004	2005	2006	2007	2008	2009	2010
<b>World prices in dollars</b>											
	U.S. dollars per tonne										
Wheat, U.S. Gulf	121.17	129.89	133.61	138.98	141.78	144.98	148.58	152.42	154.95	157.87	160.85
Barley, U.S. Portland	121.39	127.76	133.05	136.19	138.51	140.44	143.25	145.04	146.17	146.49	148.38
Maize, U.S. Gulf	88.78	96.25	98.81	101.02	102.95	105.33	108.06	110.35	112.36	115.13	117.98
Rapeseed, Hamburg	190.00	180.71	195.47	185.57	196.42	197.42	203.88	204.86	214.05	213.86	219.71
Rape meal, Hamburg	147.80	140.50	146.68	143.99	147.84	149.56	152.64	152.18	155.65	154.91	155.84
Rape oil, Hamburg	328.10	343.71	358.69	359.62	378.35	391.93	411.95	428.07	449.77	462.33	480.94
Sun seed, Lower Rhine	193.50	183.13	191.06	193.90	196.45	200.39	203.24	206.65	210.50	211.29	212.02
Sun meal, Rotterdam	123.40	116.76	123.56	123.87	124.10	126.69	129.28	131.19	133.25	134.09	135.04
Sun oil, NW Europe	370.70	372.62	383.76	397.77	415.46	436.46	456.79	477.84	501.40	519.30	537.22
Soybeans, Rotterdam	204.50	194.04	199.98	205.14	209.18	214.15	219.70	226.37	232.16	236.01	239.56
Soy meal, Rotterdam	198.50	188.63	195.81	197.36	197.53	200.03	204.45	208.69	211.37	214.05	215.93
Soy oil, Rotterdam	314.50	317.73	319.16	331.61	348.13	363.54	377.60	393.33	412.19	423.69	439.52
	U.S. dollars per 100 pounds										
Steers, Nebraska	69.65	73.65	74.79	75.05	73.21	71.78	70.31	69.00	68.16	69.12	70.91
Hogs, U.S. 51-52% lean	44.70	40.45	35.12	41.77	45.05	42.77	39.41	41.92	44.83	43.54	42.45
Broilers, U.S. 12-city	56.20	56.30	57.10	57.32	57.27	57.37	57.50	57.52	57.58	58.30	59.31
	U.S. dollars per tonne										
Cheese, FOB N. Europe	1,854	1,823	1,932	1,950	1,992	2,027	2,053	2,092	2,145	2,201	2,253
Butter, FOB N. Europe	1,325	1,428	1,581	1,609	1,644	1,676	1,704	1,741	1,785	1,835	1,898
SMP, FOB N. Europe	1,880	1,784	1,742	1,767	1,805	1,824	1,853	1,874	1,902	1,933	1,970
WMP, FOB N. Europe	1,846	1,731	1,812	1,843	1,881	1,905	1,932	1,957	1,991	2,024	2,065
<b>World prices in euro</b>											
	euro per tonne										
Wheat, U.S. Gulf	131.50	138.17	131.58	137.59	136.87	136.12	136.18	137.22	137.97	139.60	141.45
Barley, U.S. Portland	131.74	135.91	131.03	134.83	133.70	131.85	131.30	130.57	130.15	129.54	130.49
Maize, U.S. Gulf	96.35	102.39	97.30	100.01	99.38	98.89	99.04	99.35	100.05	101.81	103.76
Rapeseed, Hamburg	206.20	192.22	192.50	183.72	189.61	185.35	186.87	184.43	190.60	189.12	193.22
Rape meal, Hamburg	160.40	149.46	144.45	142.55	142.71	140.42	139.90	137.00	138.59	136.99	137.05
Rape oil, Hamburg	356.07	365.62	353.24	356.02	365.22	367.97	377.58	385.38	400.49	408.84	422.95
Sun seed, Lower Rhine	210.00	194.81	188.15	191.97	189.64	188.14	186.28	186.04	187.43	186.84	186.46
Sun meal, Rotterdam	133.92	124.20	121.68	122.63	119.79	118.95	118.49	118.10	118.65	118.57	118.75
Sun oil, NW Europe	402.30	396.37	377.93	393.79	401.05	409.78	418.67	430.18	446.46	459.21	472.45
Soybeans, Rotterdam	221.93	206.41	196.94	203.09	201.93	201.06	201.37	203.79	206.72	208.70	210.68
Soy meal, Rotterdam	215.42	200.65	192.83	195.39	190.68	187.80	187.39	187.88	188.21	189.29	189.89
Soy oil, Rotterdam	341.31	337.98	314.31	328.29	336.05	341.32	346.09	354.11	367.02	374.67	386.53
	euro per 100 kilograms										
Steers, Nebraska	166.64	172.72	162.38	163.81	155.80	148.58	142.07	136.94	133.80	134.75	137.48
Hogs, U.S. 51-52% lean	106.95	94.85	76.24	91.16	95.87	88.53	79.64	83.21	88.01	84.89	82.29
Broilers, U.S. 12-city	134.46	132.04	123.97	125.11	121.88	118.74	116.19	114.16	113.03	113.65	114.99
Cheese, FOB N. Europe	201.22	193.94	190.29	193.01	192.33	190.29	188.18	188.35	191.00	194.62	198.10
Butter, FOB N. Europe	143.80	151.94	155.74	159.31	158.73	157.39	156.17	156.74	158.97	162.26	166.94
SMP, FOB N. Europe	204.05	189.78	171.53	174.94	174.28	171.27	169.81	168.70	169.39	170.94	173.21
WMP, FOB N. Europe	200.32	184.13	178.42	182.41	181.55	178.90	177.06	176.22	177.25	179.02	181.61

# EU wheat

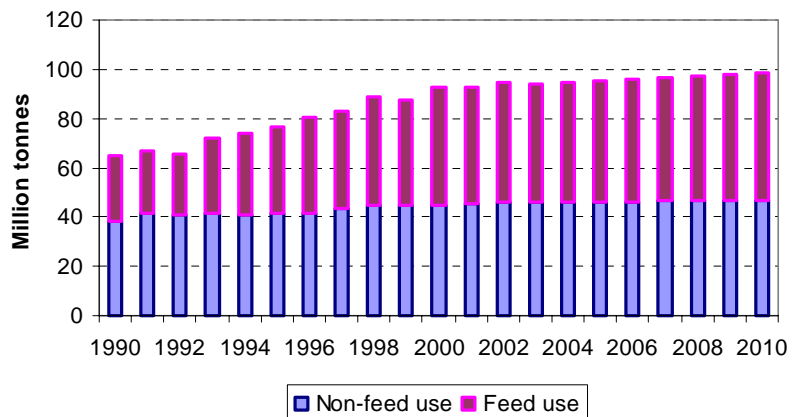
## EU wheat prices

- EU wheat **market prices** are projected to exceed intervention prices under baseline conditions.
- Prices generally move with changes in **world** cereal market prices. The dip in 2002 is due to a projected strengthening of the euro.
- In any given year, a large crop or weak demand could lead to **intervention** buying.



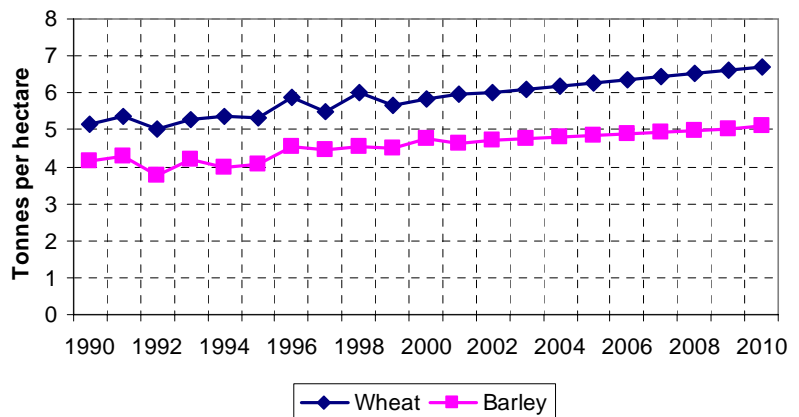
## EU wheat domestic use

- EU wheat **feed** demand grew rapidly in the 1990s in response to lower wheat prices.
- Projected growth in feed demand slows, as wheat prices stabilize.
- Food** and other uses of wheat grow slowly.



## EU wheat and barley yields

- EU **cereal yields** grow in line with historical trends.
- Wheat yields grow slightly more rapidly than barley yields.
- In any given year, **weather** and other factors will cause actual yields to deviate from these baseline projections.



## EU-15 wheat supply and utilisation

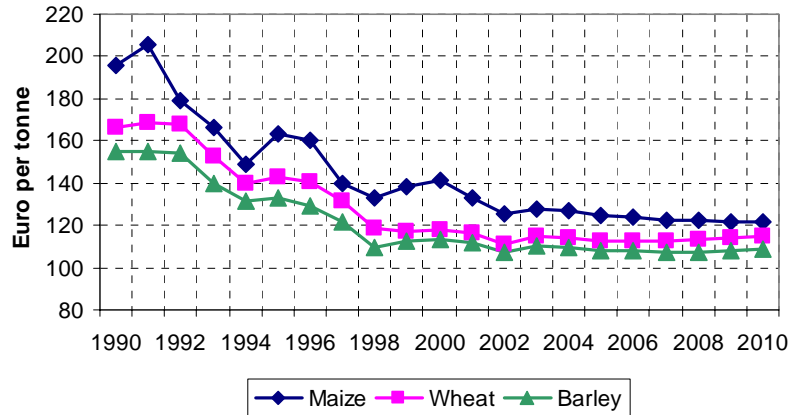
	00/01	01/02	02/03	03/04	04/05	05/06	06/07	07/08	08/09	09/10	10/11
					thousand hectares						
Area harvested	17,935	17,500	17,785	17,717	17,809	17,824	17,879	17,894	17,950	17,987	18,051
					tonnes per hectare						
Yield	5.85	5.95	6.02	6.10	6.18	6.27	6.35	6.44	6.53	6.61	6.70
					million tonnes						
Production	104.95	104.21	107.03	108.06	110.11	111.73	113.58	115.21	117.14	118.92	120.87
Beginning stocks	14.26	15.55	12.95	12.21	11.55	11.34	11.34	11.41	11.49	11.59	11.66
Imports	24.78	23.93	24.15	23.87	23.80	23.72	23.60	23.44	23.24	23.01	22.78
Total supply	143.98	143.69	144.12	144.14	145.46	146.79	148.52	150.06	151.86	153.52	155.32
Domestic use	92.54	92.85	94.54	94.31	94.97	95.60	96.32	96.85	97.40	97.84	98.33
Feed	47.65	47.56	48.69	48.57	49.02	49.45	49.99	50.39	50.81	51.13	51.52
Other	44.89	45.29	45.85	45.75	45.94	46.16	46.33	46.46	46.59	46.70	46.81
Exports	35.90	37.89	37.37	38.28	39.15	39.85	40.79	41.73	42.87	44.02	45.26
Ending stocks	15.55	12.95	12.21	11.55	11.34	11.34	11.41	11.49	11.59	11.66	11.74
Net exports	11.13	13.96	13.23	14.40	15.35	16.13	17.19	18.29	19.64	21.01	22.47
					percent						
Set-aside rate	10.0	10.0	10.0	10.0	10.0	10.0	10.0	10.0	10.0	10.0	10.0
Soft wheat prices					euro per tonne, Jan.-Dec.						
Intervention price	110.3	101.3	101.3	101.3	101.3	101.3	101.3	101.3	101.3	101.3	101.3
Market price	118.2	116.6	110.8	114.8	113.8	112.8	112.6	112.9	113.2	114.1	115.1

# EU barley and maize

EU cereal prices

- EU **barley prices** generally move with wheat prices. After 2005, EU wheat prices receive slightly more support from world markets than do barley prices.

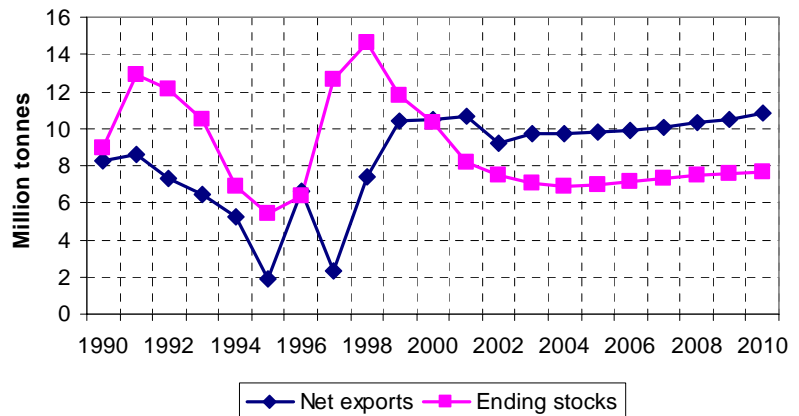
- EU **maize prices** fall relative to other cereals, encouraging increased use of maize in feed rations.



EU barley net exports and ending stocks

- EU **barley exports** have been strong the last two years, facilitating a reduction in stocks.

- Although not as buoyant as wheat exports, projected barley exports are strong enough to further reduce **barley stocks**.

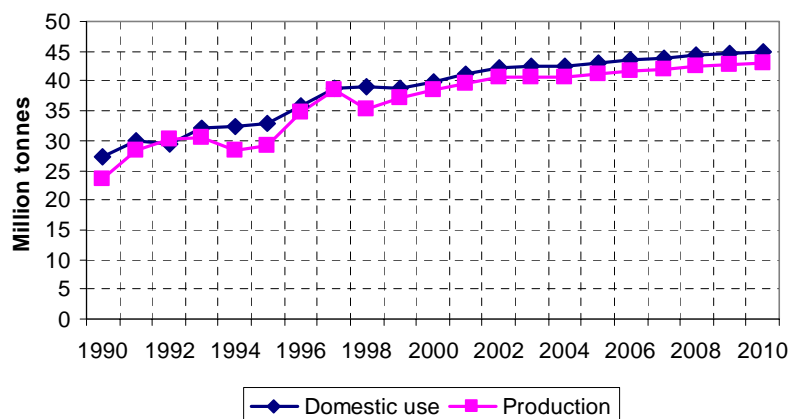


EU maize domestic use and production

- EU **maize domestic use** generally tracks production, as imports are largely determined by the tariff rate quota.

- Unlike wheat and barley, EU maize is unlikely to be competitive in world markets without **export subsidies**.

- With slowing growth in total domestic demand for cereals, maize **prices** fall relative to wheat and barley so that the increase in maize production is consumed in Europe.





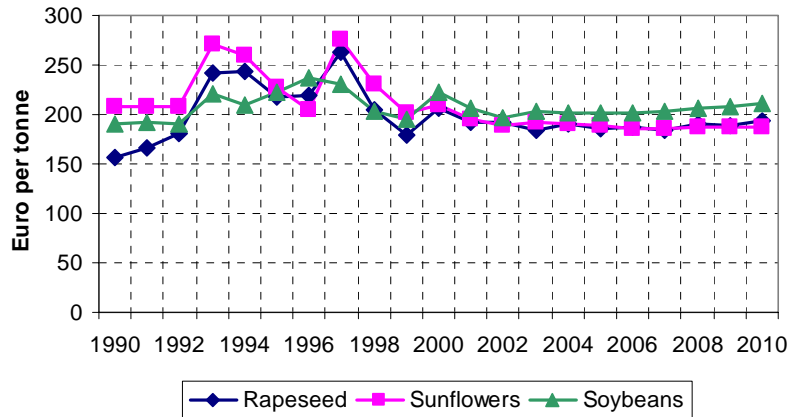
## EU-15 barley and maize supply and utilisation

	00/01	01/02	02/03	03/04	04/05	05/06	06/07	07/08	08/09	09/10	10/11
<b>Barley</b>											
Area harvested	10,807	11,030	10,983	11,015	11,038	11,025	10,999	10,980	10,955	10,926	10,892
	thousand hectares										
Yield	4.77	4.65	4.70	4.74	4.79	4.84	4.88	4.93	4.98	5.03	5.08
	tonnes per hectare										
Production	51.57	51.27	51.58	52.21	52.85	53.32	53.73	54.17	54.60	54.98	55.35
	million tonnes										
Beginning stocks	11.74	10.29	8.21	7.50	7.02	6.91	7.00	7.14	7.31	7.48	7.61
Imports	4.17	3.88	4.35	4.26	4.31	4.39	4.47	4.54	4.58	4.63	4.62
Total supply	67.48	65.43	64.13	63.97	64.18	64.62	65.20	65.84	66.48	67.09	67.58
Domestic use	42.53	42.65	43.05	42.99	43.20	43.44	43.69	43.94	44.14	44.35	44.44
Feed	30.83	30.84	31.11	31.08	31.25	31.44	31.65	31.87	32.05	32.23	32.31
Other	11.70	11.82	11.95	11.91	11.95	12.00	12.04	12.07	12.10	12.12	12.13
Exports	14.66	14.57	13.57	13.96	14.07	14.18	14.38	14.60	14.86	15.13	15.50
Ending stocks	10.29	8.21	7.50	7.02	6.91	7.00	7.14	7.31	7.48	7.61	7.64
Net exports	10.49	10.70	9.23	9.70	9.76	9.78	9.90	10.06	10.28	10.50	10.88
Set-aside rate	10.0	10.0	10.0	10.0	10.0	10.0	10.0	10.0	10.0	10.0	10.0
	percent										
Intervention price	110.3	101.3	101.3	101.3	101.3	101.3	101.3	101.3	101.3	101.3	101.3
	euro per tonne, Jan.-Dec.										
Market price	113.2	111.7	107.5	110.3	109.3	108.1	107.8	107.5	107.5	107.7	108.7
<b>Maize for grain</b>											
Area harvested	4,274	4,391	4,453	4,407	4,347	4,349	4,342	4,338	4,316	4,300	4,282
	thousand hectares										
Yield	9.04	9.00	9.11	9.23	9.36	9.48	9.59	9.71	9.83	9.95	10.06
	tonnes per hectare										
Production	38.63	39.54	40.56	40.69	40.70	41.23	41.64	42.10	42.42	42.77	43.09
Beginning stocks	4.11	4.58	4.81	5.05	5.12	5.14	5.18	5.21	5.24	5.26	5.27
Imports	10.61	11.06	11.49	11.59	11.58	11.70	11.79	11.88	11.93	11.98	12.02
Total supply	53.34	55.18	56.86	57.32	57.40	58.07	58.61	59.20	59.59	60.01	60.38
Domestic use	39.85	41.21	42.22	42.51	42.59	43.09	43.52	43.98	44.31	44.66	45.00
Feed	31.06	32.34	33.18	33.45	33.49	33.91	34.28	34.68	34.96	35.27	35.55
Other	8.79	8.88	9.04	9.06	9.10	9.18	9.24	9.30	9.35	9.40	9.44
Exports	8.92	9.16	9.59	9.69	9.67	9.79	9.88	9.97	10.02	10.07	10.11
Ending stocks	4.58	4.81	5.05	5.12	5.14	5.18	5.21	5.24	5.26	5.27	5.27
Net exports	-1.69	-1.90	-1.90	-1.90	-1.90	-1.90	-1.90	-1.90	-1.90	-1.90	-1.90
Set-aside rate	10.0	10.0	10.0	10.0	10.0	10.0	10.0	10.0	10.0	10.0	10.0
	percent										
Intervention price	110.3	101.3	101.3	101.3	101.3	101.3	101.3	101.3	101.3	101.3	101.3
	euro per tonne, Jan.-Dec.										
Market price	141.1	133.2	125.5	127.5	127.2	124.7	123.7	122.5	122.0	121.8	122.0

# EU oilseeds

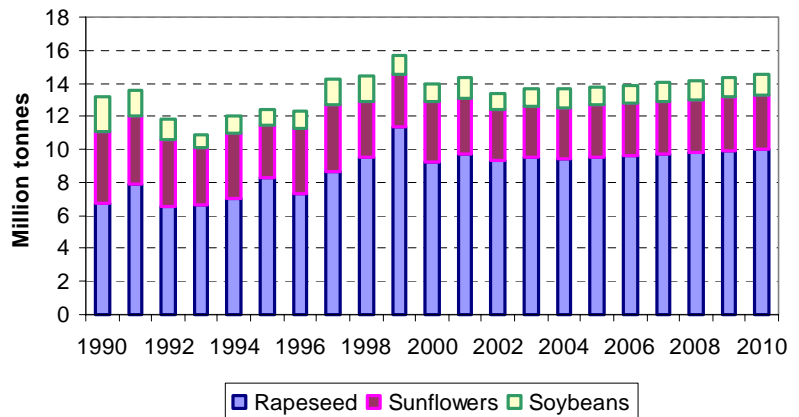
### EU oilseed prices

- **Prices** of all three major oilseeds are projected to decline in 2001 and then remain relatively stable for the rest of the projection period.
- **Oil** prices increase after 2002, while meal prices stagnate.
- As with other commodities, the price outlook is more optimistic in **dollar** terms, given the assumed appreciation of the euro.



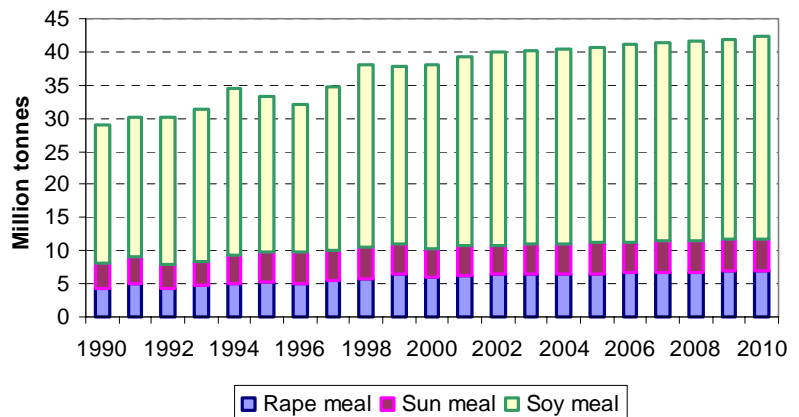
### EU oilseed production

- Oilseed area and **production** fell in 2000, in part because of reduced area payments.
- After a slight upturn in 2001, oilseed production falls again in **2002**, when the last scheduled area payment reduction comes into force.
- Yield-driven increases in subsequent years are modest, and leave 2010 production below the 1999 level.



### EU oilseed meal domestic use

- **Oilseed meal** domestic use increases in 2001 in response to lower meal prices and the ban on meat and bone meal.
- Meal demand increases slowly in later years, reflecting slow growth in EU **poultry** and **livestock** production.



## EU-15 rapeseed sector supply and utilisation

	00/01	01/02	02/03	03/04	04/05	05/06	06/07	07/08	08/09	09/10	10/11
<b>Rapeseed</b>											
Area harvested	3,156	3,123	2,941	2,994	thousand hectares			2,959	2,952	2,975	2,979
Yield	2.92	3.12	3.16	3.18	tonnes per hectare			3.26	3.29	3.32	3.34
Production	9,223	9,735	9,291	9,525	thousand tonnes			9,733	9,786	9,939	10,029
Beginning stocks	373	155	161	159	162	161	162	162	164	164	165
Imports	3,475	3,642	3,839	3,890	3,951	3,989	4,057	4,116	4,161	4,194	4,227
Total supply	13,071	13,533	13,292	13,573	13,563	13,718	13,825	14,011	14,111	14,297	14,421
Domestic use	9,385	9,715	9,625	9,825	9,860	9,981	10,090	10,239	10,328	10,461	10,557
Crush	8,822	9,147	9,057	9,254	9,290	9,409	9,519	9,666	9,756	9,888	9,984
Other	563	567	568	571	570	571	571	573	572	573	573
Exports	3,531	3,657	3,507	3,586	3,542	3,575	3,573	3,608	3,619	3,670	3,699
Ending stocks	155	161	159	162	161	162	162	164	164	165	165
Net exports	56	14	-332	-303	-409	-414	-484	-507	-541	-524	-528
Hamburg price	206.2	192.2	192.5	183.7	euro per tonne, marketing year basis			186.9	184.4	190.6	189.1
<b>Rapeseed Meal</b>											
Production	5,144	5,352	5,299	5,414	thousand tonnes			5,654	5,707	5,784	5,840
Beginning stocks	234	117	126	128	132	133	137	139	143	144	148
Imports	2,287	2,393	2,469	2,522	2,463	2,478	2,484	2,542	2,508	2,547	2,553
Total supply	7,665	7,862	7,894	8,064	8,030	8,116	8,189	8,336	8,358	8,475	8,540
Domestic use	6,059	6,291	6,383	6,552	6,480	6,557	6,617	6,775	6,763	6,881	6,935
Exports	1,489	1,445	1,383	1,379	1,416	1,422	1,432	1,417	1,451	1,446	1,456
Ending stocks	117	126	128	132	133	137	139	143	144	148	150
Net exports	-798	-948	-1,086	-1,143	-1,046	-1,056	-1,052	-1,125	-1,057	-1,100	-1,097
Hamburg price	160.4	149.5	144.5	142.6	euro per tonne, marketing year basis			139.9	137.0	138.6	137.0
<b>Rapeseed Oil</b>											
Production	3,509	3,645	3,610	3,688	thousand tonnes			3,794	3,853	3,889	3,980
Beginning stocks	374	328	334	336	341	340	342	343	346	345	347
Imports	1,257	1,233	1,256	1,247	1,245	1,242	1,232	1,221	1,213	1,206	1,200
Total supply	5,140	5,206	5,200	5,271	5,289	5,332	5,368	5,417	5,447	5,493	5,526
Domestic use	3,173	3,271	3,327	3,368	3,385	3,416	3,432	3,456	3,471	3,495	3,511
Exports	1,639	1,600	1,537	1,562	1,564	1,574	1,593	1,615	1,631	1,650	1,668
Ending stocks	328	334	336	341	340	342	343	346	345	347	347
Net exports	382	367	281	315	319	332	361	394	418	444	468
Hamburg price	356.1	365.6	353.2	356.0	euro per tonne, marketing year basis			377.6	385.4	400.5	408.8

## EU-15 sunflowerseed sector supply and utilisation

	00/01	01/02	02/03	03/04	04/05	05/06	06/07	07/08	08/09	09/10	10/11
<b>Sunflowerseed</b>											
Area harvested	1,965	1,981	1,770	1,742	thousand hectares			1,724	1,722	1,719	1,716
Yield	1.88	1.72	1.75	1.77	tonnes per hectare			1.85	1.87	1.89	1.91
Production	3,688	3,398	3,096	3,075	thousand tonnes			3,189	3,221	3,249	3,279
Beginning stocks	540	334	319	288	278	280	283	288	289	291	293
Imports	2,200	2,758	3,006	3,080	3,133	3,198	3,273	3,356	3,442	3,537	3,630
Total supply	6,428	6,490	6,421	6,443	6,515	6,609	6,725	6,832	6,953	7,077	7,203
Domestic use	5,477	5,650	5,662	5,713	5,787	5,885	6,002	6,117	6,244	6,376	6,509
Crush	5,125	5,289	5,294	5,341	5,409	5,501	5,613	5,723	5,846	5,973	6,101
Other	352	361	368	373	378	384	389	394	398	403	408
Exports	617	521	471	452	448	442	436	426	418	408	398
Ending stocks	334	319	288	278	280	283	288	289	291	293	296
Net exports	-1,583	-2,237	-2,535	-2,628	-2,684	-2,756	-2,837	-2,930	-3,024	-3,130	-3,233
Lower Rhine price	210.0	194.8	188.2	192.0	euro per tonne, marketing year basis			186.0	187.4	186.8	186.5
<b>Sunflower meal</b>											
Production	2,615	2,719	2,720	2,745	thousand tonnes			2,939	3,003	3,067	3,133
Beginning stocks	146	122	132	134	134	136	139	141	144	146	148
Imports	2,106	2,303	2,295	2,300	2,368	2,349	2,361	2,367	2,344	2,348	2,343
Total supply	4,867	5,144	5,148	5,179	5,281	5,312	5,383	5,447	5,490	5,561	5,624
Domestic use	4,134	4,441	4,443	4,477	4,589	4,613	4,683	4,744	4,779	4,846	4,904
Exports	611	571	571	568	555	560	559	559	565	566	569
Ending stocks	122	132	134	134	136	139	141	144	146	148	151
Net exports	-1,495	-1,732	-1,724	-1,732	-1,812	-1,789	-1,802	-1,807	-1,778	-1,781	-1,774
Rotterdam price	133.9	124.2	121.7	122.6	euro per tonne, marketing year basis			118.1	118.7	118.6	118.8
<b>Sunflower oil</b>											
Production	2,127	2,200	2,199	2,221	thousand tonnes			2,379	2,431	2,484	2,537
Beginning stocks	252	198	200	203	201	201	202	204	205	207	209
Imports	708	730	741	733	731	722	712	701	688	675	664
Total supply	3,087	3,128	3,140	3,157	3,182	3,210	3,248	3,284	3,325	3,365	3,409
Domestic use	1,965	2,008	2,036	2,038	2,055	2,064	2,076	2,084	2,093	2,101	2,115
Exports	924	920	901	918	926	945	968	994	1,025	1,055	1,083
Ending stocks	198	200	203	201	201	202	204	205	207	209	211
Net exports	216	190	160	185	194	223	256	293	336	381	419
Northwest Europe price	402.3	396.4	377.9	393.8	euro per tonne, marketing year basis			430.2	446.5	459.2	472.4

## EU-15 soybean sector supply and utilisation

	00/01	01/02	02/03	03/04	04/05	05/06	06/07	07/08	08/09	09/10	10/11
<b>Soybeans</b>											
Area harvested	362	360	311	313	thousand hectares						
Yield	3.00	3.33	3.35	3.39	tonnes per hectare						
Production	1,086	1,201	1,040	1,060	thousand tonnes						
Beginning stocks	692	536	537	528	1,073	1,089	1,108	1,125	1,148	1,169	1,192
Imports	16,651	17,181	17,537	17,555	17,532	17,510	17,522	17,512	17,502	17,526	17,582
Total supply	18,429	18,918	19,114	19,143	19,124	19,116	19,148	19,155	19,165	19,207	19,282
Domestic use	17,193	17,682	17,887	17,925	17,908	17,899	17,931	17,942	17,956	18,000	18,078
Crush	16,055	16,537	16,735	16,776	16,758	16,748	16,780	16,791	16,805	16,850	16,928
Other	1,138	1,145	1,152	1,149	1,150	1,151	1,152	1,151	1,150	1,150	1,150
Exports	700	699	699	698	698	698	698	698	698	698	698
Ending stocks	536	537	528	519	517	518	518	515	511	508	506
Net exports	-15,951	-16,482	-16,839	-16,856	-16,833	-16,812	-16,824	-16,814	-16,804	-16,828	-16,884
Rotterdam price	221.9	206.4	196.9	203.1	201.9	201.1	201.4	203.8	206.7	208.7	210.7
euro per tonne, marketing year basis											
<b>Soybean meal</b>											
Production	12,719	13,121	13,277	13,311	thousand tonnes						
Beginning stocks	756	590	626	655	655	664	671	675	677	679	681
Imports	20,118	20,607	20,861	20,831	21,079	21,293	21,463	21,554	21,700	21,775	21,874
Total supply	33,593	34,318	34,764	34,796	35,030	35,245	35,447	35,551	35,710	35,822	35,986
Domestic use	27,871	28,600	29,056	29,088	29,352	29,596	29,824	29,944	30,127	30,250	30,425
Exports	5,132	5,092	5,053	5,054	5,014	4,978	4,948	4,930	4,905	4,891	4,876
Ending stocks	590	626	655	655	664	671	675	677	679	681	686
Net exports	-14,986	-15,515	-15,808	-15,777	-16,065	-16,315	-16,515	-16,624	-16,796	-16,883	-16,998
Rotterdam price	215.4	200.7	192.8	195.4	190.7	187.8	187.4	187.9	188.2	189.3	189.9
euro per tonne, marketing year basis											
<b>Soybean oil</b>											
Production	2,880	2,981	3,017	3,025	thousand tonnes						
Beginning stocks	168	174	181	188	185	183	182	181	179	177	176
Imports	547	537	538	535	536	537	539	539	540	540	539
Total supply	3,595	3,692	3,736	3,747	3,743	3,740	3,746	3,747	3,749	3,755	3,767
Domestic use	1,758	1,783	1,829	1,824	1,831	1,841	1,857	1,866	1,873	1,885	1,892
Exports	1,663	1,729	1,719	1,737	1,728	1,717	1,708	1,702	1,699	1,694	1,700
Ending stocks	174	181	188	185	183	182	181	179	177	176	175
Net exports	1,116	1,192	1,181	1,202	1,192	1,180	1,169	1,163	1,159	1,154	1,161
Rotterdam price	341.3	338.0	314.3	328.3	336.1	341.3	346.1	354.1	367.0	374.7	386.5
euro per tonne, marketing year basis											

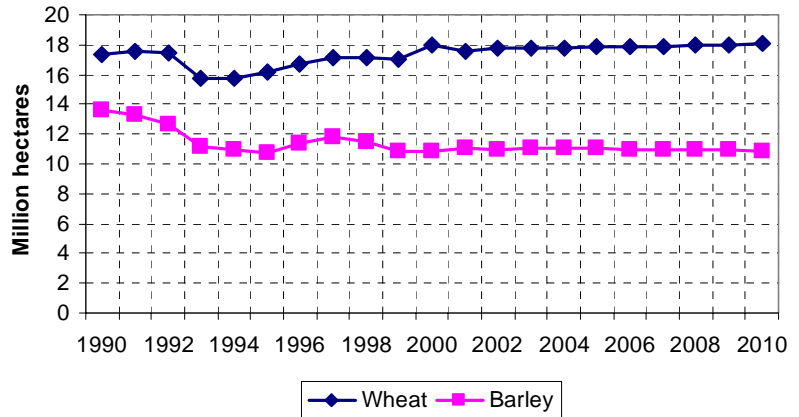
# EU cereal and oilseed area

- After a sharp increase in 2000, **wheat area** declines in 2001, in large part because of adverse weather when winter wheat was sown.

- These problems with winter wheat seeding contribute to larger plantings of **barley** and other crops in 2001.

- With an assumed return to normal weather conditions, wheat area increases in **2002** and barley area falls.

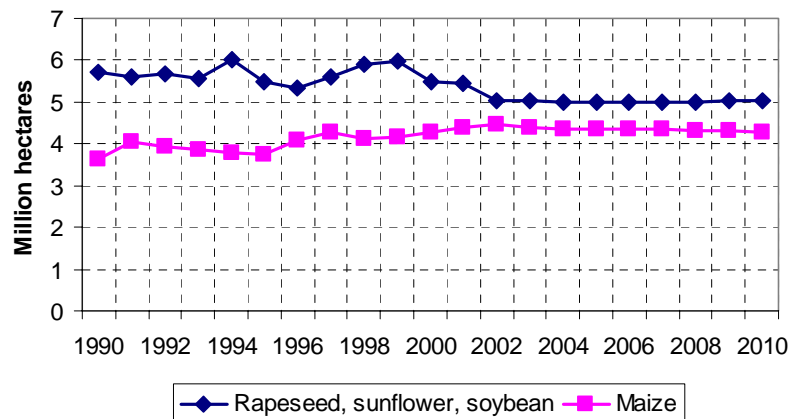
EU wheat and barley area harvested



- Oilseed** area fell in 2000 and is projected to fall again in 2002, largely because of reduced area payments.

- Maize** area continues to increase in 2001 and 2002, but in later years declines as maize prices fall relative to prices for other cereals.

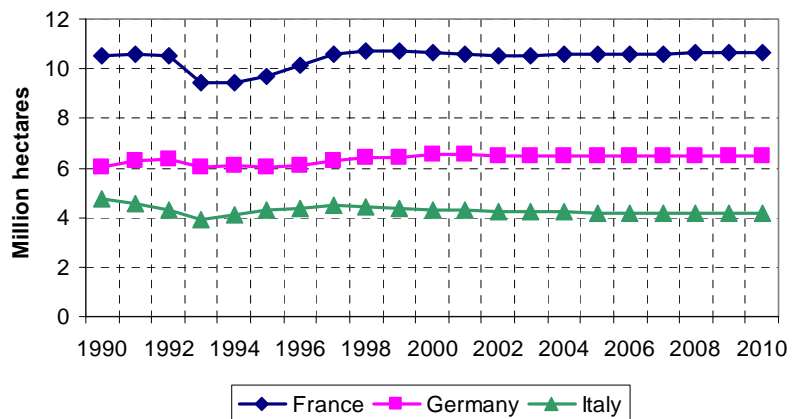
EU oilseed and maize area harvested



- With the mandatory set-aside rate held at 10 percent, the EU **total area** devoted to wheat, barley, maize, rapeseed, sunflowers, and soybeans is relatively flat during the projection period.

- Total area devoted to these crops is also fairly constant in **France** and **Germany**, but there is a small projected decline in **Italy**, as there was in the 1990s.

Area harvested for 6 cereals and oilseeds



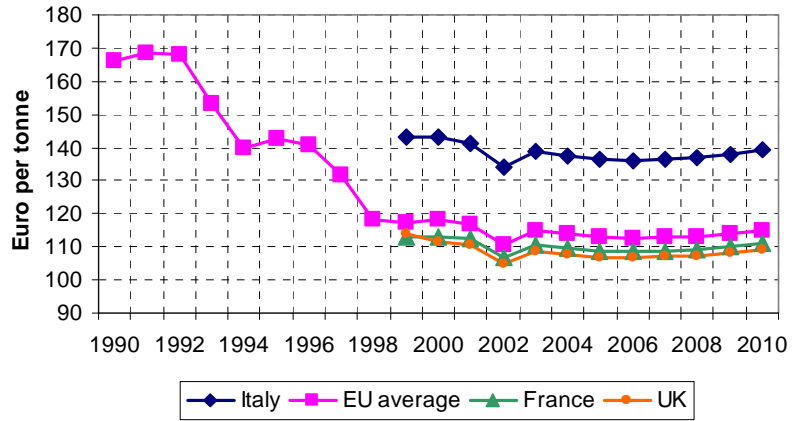
## EU-15 area harvested

	00/01	01/02	02/03	03/04	04/05	05/06	06/07	07/08	08/09	09/10	10/11
<b>Wheat</b>	thousand hectares										
EU-15	17,935	17,500	17,785	17,717	17,809	17,824	17,879	17,894	17,950	17,987	18,051
France	5,200	5,033	5,137	5,129	5,194	5,208	5,235	5,249	5,278	5,300	5,331
Germany	2,969	2,920	2,947	2,938	2,948	2,955	2,969	2,975	2,988	2,996	3,009
Ireland	84	81	81	80	81	80	80	80	81	81	81
Italy	2,318	2,270	2,273	2,254	2,262	2,251	2,245	2,235	2,230	2,224	2,221
United Kingdom	2,086	2,086	2,093	2,086	2,086	2,085	2,088	2,087	2,090	2,091	2,094
Other EU	5,278	5,111	5,254	5,230	5,238	5,245	5,261	5,268	5,282	5,295	5,314
<b>Barley</b>											
EU-15	10,807	11,030	10,983	11,015	11,038	11,025	10,999	10,980	10,955	10,926	10,892
France	1,573	1,642	1,602	1,620	1,620	1,621	1,620	1,622	1,623	1,622	1,620
Germany	2,068	2,105	2,141	2,147	2,153	2,148	2,142	2,136	2,130	2,122	2,114
Ireland	181	179	178	178	177	177	177	177	175	175	175
Italy	345	349	358	356	354	351	347	345	342	339	336
United Kingdom	1,128	1,119	1,128	1,130	1,142	1,149	1,152	1,156	1,157	1,158	1,158
Other EU	5,512	5,636	5,576	5,585	5,592	5,579	5,560	5,544	5,528	5,509	5,489
<b>Maize for grain</b>											
EU-15	4,274	4,391	4,453	4,407	4,347	4,349	4,342	4,338	4,316	4,300	4,282
France	1,834	1,873	1,895	1,877	1,846	1,843	1,836	1,830	1,817	1,805	1,799
Germany	361	362	352	343	339	338	336	334	332	330	327
Ireland	0	0	0	0	0	0	0	0	0	0	0
Italy	1,100	1,150	1,201	1,194	1,184	1,191	1,194	1,198	1,197	1,198	1,198
United Kingdom	0	0	0	0	0	0	0	0	0	0	0
Other EU	979	1,006	1,007	993	978	978	976	975	970	967	964
<b>3 oilseeds</b>											
EU-15	5,483	5,464	5,021	5,048	4,993	5,003	4,992	5,002	4,995	5,019	5,022
France	2,035	2,028	1,917	1,925	1,903	1,907	1,903	1,907	1,904	1,913	1,915
Germany	1,133	1,128	1,058	1,068	1,053	1,055	1,051	1,055	1,053	1,060	1,061
Ireland	3	3	3	3	3	3	3	3	3	3	3
Italy	550	528	415	413	410	409	407	406	405	405	405
United Kingdom	450	444	422	428	423	425	424	426	424	427	427
Other EU	1,312	1,334	1,206	1,212	1,201	1,204	1,203	1,205	1,205	1,210	1,212
<b>6-crop total</b>											
EU-15	38,499	38,386	38,243	38,188	38,187	38,201	38,213	38,213	38,216	38,232	38,248
France	10,642	10,576	10,551	10,550	10,563	10,580	10,595	10,609	10,623	10,641	10,659
Germany	6,531	6,514	6,498	6,496	6,493	6,496	6,499	6,501	6,503	6,508	6,512
Ireland	268	264	262	261	261	260	260	259	259	259	259
Italy	4,313	4,297	4,246	4,218	4,209	4,201	4,194	4,184	4,175	4,167	4,159
United Kingdom	3,664	3,650	3,642	3,643	3,651	3,659	3,665	3,668	3,672	3,676	3,679
Other EU	13,081	13,086	13,043	13,019	13,010	13,005	13,000	12,992	12,985	12,982	12,979

# EU cereal prices

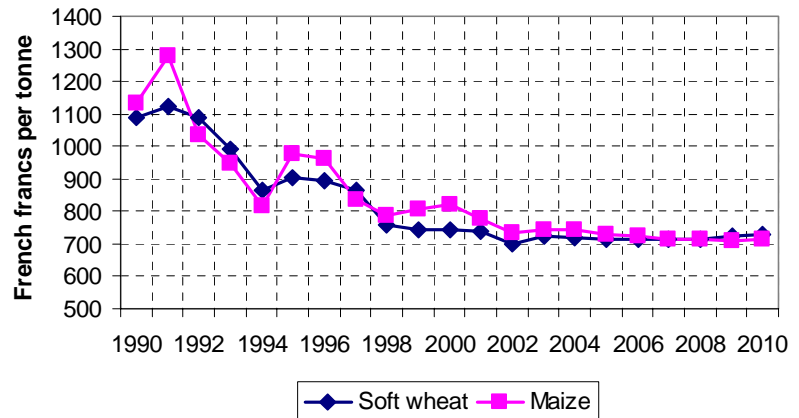
### Soft wheat market prices

- **Soft wheat** prices decline in 2002 because of the forecast strengthening of the euro, and then recover in 2003 as the euro holds its value while world wheat prices increase.
- Market prices in **France**, the **United Kingdom**, and most other countries move together at a level slightly above the intervention price.
- Wheat prices in **Italy**, a net importer of wheat, are generally above those in other EU countries.



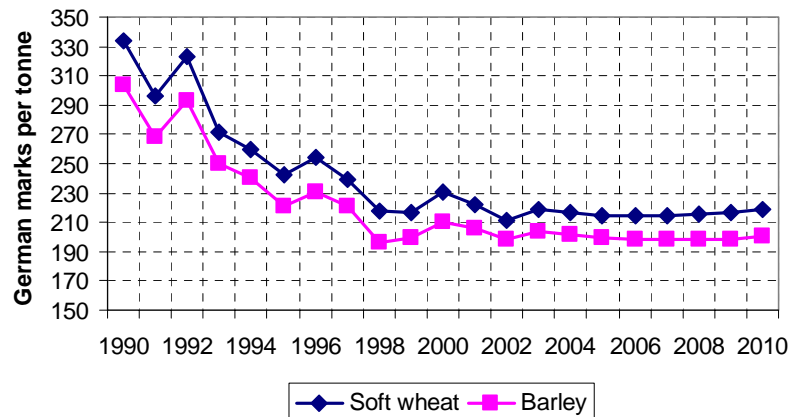
### French cereal prices

- Over the last 10 years, **French maize** prices have exceeded French soft **wheat** prices in six years, including 1998-2000.
- During the projection period, maize prices fall relative to wheat, encouraging less maize production and more consumption.



### German cereal prices

- **German** cereal prices generally move with those in France and other EU countries.
- German **barley** prices remain slightly lower than **soft wheat** prices.





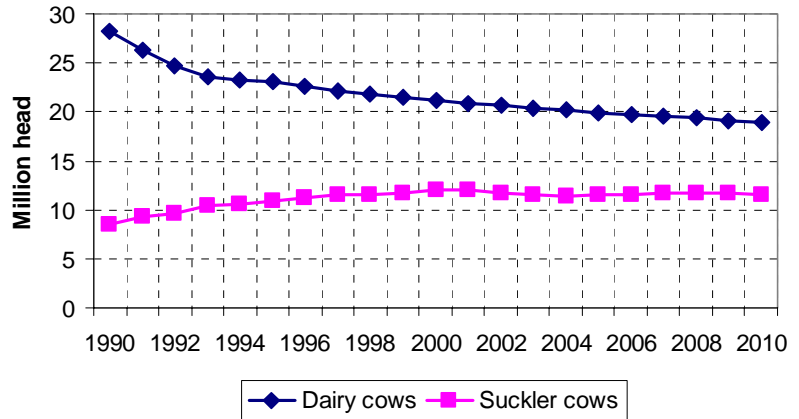
## EU-15 cereal prices

	00/01	01/02	02/03	03/04	04/05	05/06	06/07	07/08	08/09	09/10	10/11
<b>Soft wheat</b>											
	euro per tonne										
EU-15 average	118.2	116.6	110.8	114.8	113.8	112.8	112.6	112.9	113.2	114.1	115.1
France	113.1	112.4	106.6	110.6	109.6	108.7	108.5	108.8	109.1	110.0	111.1
Germany	117.8	113.5	108.1	111.9	110.9	109.9	109.6	109.8	110.0	110.8	111.6
Ireland (feed)	105.4	106.1	102.9	105.4	104.7	103.6	103.4	103.0	102.9	103.1	103.1
Italy	143.0	141.4	134.1	138.8	137.5	136.4	136.1	136.5	136.9	138.0	139.2
United Kingdom	111.6	110.6	104.9	108.7	107.8	106.9	106.7	107.0	107.3	108.2	109.2
U.S. Gulf	131.5	138.2	131.6	137.6	136.9	136.1	136.2	137.2	138.0	139.6	141.5
<b>Barley</b>											
EU-15 average	113.2	111.7	107.5	110.3	109.3	108.1	107.8	107.5	107.5	107.7	108.7
France	112.9	110.7	106.4	109.0	107.9	106.7	106.4	106.1	106.1	106.4	107.4
Germany	107.3	105.1	101.4	103.9	103.0	101.9	101.6	101.3	101.3	101.5	102.4
Ireland (feed)	101.6	102.2	99.1	101.6	100.9	99.8	99.5	99.2	99.1	99.2	99.2
Italy	144.9	141.3	135.0	138.3	137.2	135.7	135.5	135.3	135.4	135.9	137.4
United Kingdom	102.8	103.5	100.0	102.8	102.0	100.8	100.5	100.2	100.0	100.2	101.1
U.S. Portland	131.7	135.9	131.0	134.8	133.7	131.8	131.3	130.6	130.2	129.5	130.5
<b>Maize</b>											
EU-15 average	141.1	133.2	125.5	127.5	127.2	124.7	123.7	122.5	122.0	121.8	122.0
France	125.2	118.3	111.5	113.4	113.2	110.9	110.0	108.9	108.5	108.3	108.5
Germany	117.1	110.4	104.1	106.0	105.7	103.5	102.7	101.6	101.2	101.0	101.1
Italy	158.9	149.9	140.7	142.9	142.6	139.7	138.6	137.2	136.7	136.4	136.6
U.S. Gulf	96.3	102.4	97.3	100.0	99.4	98.9	99.0	99.3	100.1	101.8	103.8
<b>Wheat</b>											
	local currency per tonne										
France (FF)	742.0	737.3	699.5	725.6	719.1	713.0	711.7	713.8	715.8	721.8	728.4
Germany (DM)	230.4	222.0	211.5	218.8	216.9	215.0	214.4	214.8	215.1	216.6	218.3
Ireland (feed, IR£)	83.0	83.5	81.0	83.0	82.5	81.6	81.4	81.2	81.1	81.2	81.2
Italy (1000 IL)	276.9	273.7	259.6	268.8	266.3	264.1	263.6	264.3	265.0	267.2	269.6
United Kingdom (£)	67.8	68.7	68.0	72.3	73.6	73.4	74.0	75.2	75.6	76.2	76.9
U.S. Gulf (\$)	121.2	129.9	133.6	139.0	141.8	145.0	148.6	152.4	154.9	157.9	160.8
<b>Barley</b>											
France (FF)	740.8	726.1	697.8	714.8	707.9	699.8	698.2	696.2	696.1	697.9	704.8
Germany (DM)	209.9	205.6	198.2	203.3	201.4	199.2	198.7	198.1	198.1	198.5	200.4
Ireland (feed, IR£)	80.0	80.5	78.0	80.0	79.5	78.6	78.4	78.2	78.1	78.2	78.2
Italy (1000 IL)	280.7	273.5	261.4	267.9	265.6	262.8	262.4	261.9	262.2	263.1	266.0
United Kingdom (£)	62.4	64.3	64.8	68.4	69.7	69.3	69.7	70.3	70.4	70.5	71.2
U.S. Portland (\$)	121.4	127.8	133.1	136.2	138.5	140.4	143.3	145.0	146.2	146.5	148.4
<b>Maize</b>											
France (FF)	821.2	775.9	731.4	743.8	742.3	727.4	721.8	714.6	711.8	710.5	711.7
Germany (DM)	229.0	215.8	203.5	207.3	206.7	202.5	200.8	198.7	197.9	197.5	197.8
Italy (1000 IL)	307.6	290.2	272.5	276.7	276.1	270.6	268.4	265.7	264.6	264.1	264.5
U.S. Gulf (\$)	88.8	96.3	98.8	101.0	103.0	105.3	108.1	110.4	112.4	115.1	118.0

# EU livestock

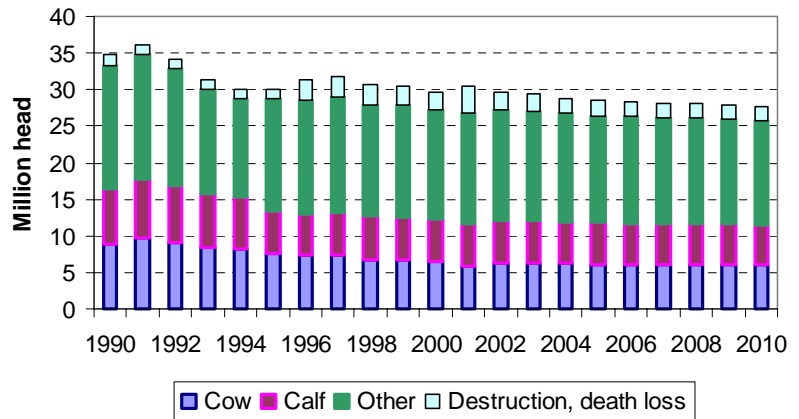
- EU **dairy cow** numbers continue to decline, as productivity increases far outweigh slight increases in the milk quota.
- **Suckler cow** numbers have increased and now exceed the payment quota in many countries.
- Suckler cow numbers decline slightly between 2002 and 2004 in response to low prices as producers eliminate animals ineligible for payments.

Beginning EU cow inventories



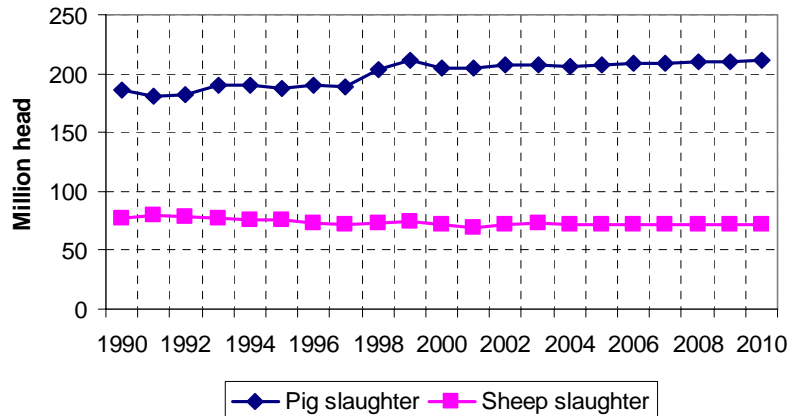
- Cattle **destruction** policies reduce cattle slaughter in 2001 and subsequent years. The baseline assumes that the only destruction policy active after 2003 is the OTMS scheme in the United Kingdom.
- Reduced cow numbers result in fewer **calves** and a long-run decline in cattle slaughter.

EU cattle slaughter, destruction and death loss



- A large increase in **pig slaughter** between 1997 and 1999 resulted in a sharp decline in pig prices, which in turn resulted in lower slaughter in 2000.
- Current strong pig and sheep prices cause some increase in 2002 pig and **sheep slaughter**.
- In later years, pig slaughter generally increases slowly while sheep slaughter is steady to declining.

Pig and sheep slaughter



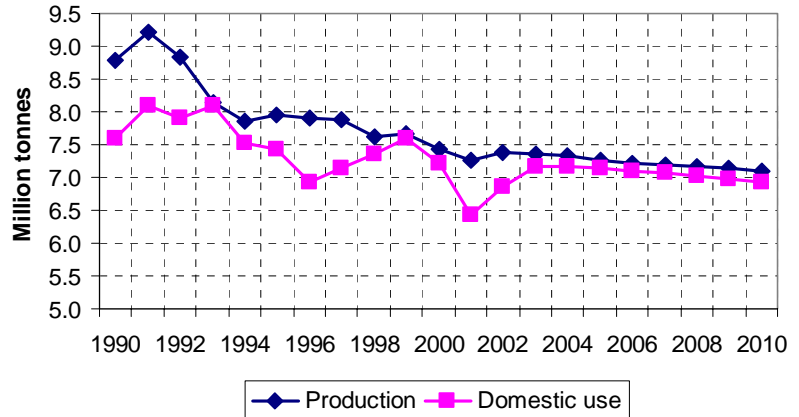
## EU-15 livestock supply and utilisation

	2000	2001	2002	2003	2004	2005	2006	2007	2008	2009	2010
<b>Cattle</b>											
	million head										
Beginning inventories	82.56	81.97	80.88	80.04	79.17	78.46	77.93	77.50	77.08	76.57	76.03
Dairy cows	21.16	20.93	20.76	20.43	20.19	19.93	19.76	19.58	19.40	19.15	18.92
Suckler cows	11.99	12.06	11.73	11.59	11.42	11.52	11.59	11.64	11.65	11.63	11.61
Other cattle	49.41	48.98	48.39	48.02	47.56	47.01	46.59	46.28	46.02	45.78	45.49
Calf crop	28.78	29.12	28.69	28.28	27.96	27.82	27.73	27.60	27.44	27.21	26.98
Non-EU imports	0.47	0.47	0.47	0.47	0.47	0.47	0.47	0.47	0.47	0.47	0.47
Total supply	111.81	111.56	110.04	108.79	107.60	106.75	106.13	105.57	104.98	104.25	103.48
Cattle slaughter	27.21	26.84	27.23	27.13	26.79	26.47	26.29	26.16	26.07	25.90	25.70
Cow slaughter	6.40	5.89	6.17	6.28	6.18	6.11	6.11	6.10	6.10	6.04	5.98
Calf slaughter	5.86	5.81	5.85	5.79	5.75	5.69	5.66	5.62	5.59	5.54	5.49
Other slaughter	14.95	15.14	15.21	15.06	14.87	14.67	14.53	14.44	14.38	14.32	14.24
Non-EU exports	0.30	0.30	0.30	0.30	0.30	0.30	0.30	0.30	0.30	0.30	0.30
Destruction, other loss	2.33	3.54	2.47	2.19	2.05	2.04	2.04	2.03	2.03	2.02	2.01
Ending inventories	81.97	80.88	80.04	79.17	78.46	77.93	77.50	77.08	76.57	76.03	75.46
Suckler cow quota	10.82	10.82	10.82	10.82	10.82	10.82	10.82	10.82	10.82	10.82	10.82
	kilograms per head										
Slaughter weight	272.9	270.4	271.1	271.2	273.9	274.3	274.6	274.8	275.1	275.5	276.1
<b>Pigs</b>											
	million head										
Beginning inventories	124.10	123.17	123.82	125.37	124.49	124.19	125.15	125.60	125.81	126.25	126.70
Sows	11.77	11.63	11.86	11.78	11.58	11.65	11.68	11.65	11.64	11.65	11.64
Other pigs	112.34	111.54	111.95	113.59	112.91	112.54	113.47	113.95	114.17	114.60	115.05
Pig crop	214.89	216.41	219.64	218.32	217.55	219.26	220.16	220.56	221.36	222.22	222.83
Non-EU imports	0.03	0.03	0.03	0.03	0.03	0.03	0.03	0.03	0.03	0.03	0.03
Total supply	339.02	339.60	343.48	343.71	342.07	343.48	345.34	346.18	347.20	348.50	349.55
Pig slaughter	204.82	204.31	206.85	207.95	206.66	207.06	208.40	209.00	209.53	210.33	211.03
Non-EU exports	0.13	0.13	0.13	0.13	0.13	0.13	0.13	0.13	0.13	0.13	0.13
Destruction, other loss	10.91	11.35	11.14	11.14	11.09	11.15	11.21	11.25	11.30	11.35	11.39
Ending inventories	123.17	123.82	125.37	124.49	124.19	125.15	125.60	125.81	126.25	126.70	127.01
	kilograms per head										
Slaughter weight	87.3	87.9	87.7	87.6	88.1	88.2	88.3	88.5	88.6	88.8	88.9
<b>Sheep</b>											
	million head										
Beginning inventories	100.73	100.28	100.51	100.79	100.56	100.39	100.20	99.92	99.61	99.24	98.79
Ewes	68.40	68.55	68.94	68.95	68.67	68.51	68.32	68.12	67.91	67.65	67.32
Other sheep	32.34	31.73	31.56	31.83	31.89	31.89	31.87	31.80	31.70	31.60	31.47
Lamb crop	76.01	76.21	76.63	76.55	76.26	76.08	75.88	75.64	75.40	75.09	74.72
Non-EU imports	1.31	1.31	1.31	1.31	1.31	1.31	1.31	1.31	1.31	1.31	1.31
Total supply	178.04	177.79	178.44	178.65	178.12	177.78	177.38	176.87	176.31	175.64	174.82
Sheep slaughter	72.29	69.71	72.32	72.75	72.39	72.25	72.13	71.93	71.75	71.53	71.23
Non-EU exports	0.03	0.03	0.03	0.03	0.03	0.03	0.03	0.03	0.03	0.03	0.03
Destruction, other loss	5.45	7.54	5.30	5.31	5.31	5.31	5.30	5.30	5.29	5.29	5.29
Ending inventories	100.28	100.51	100.79	100.56	100.39	100.20	99.92	99.61	99.24	98.79	98.27
	kilograms per head										
Slaughter weight	15.5	15.5	15.5	15.5	15.5	15.5	15.5	15.5	15.6	15.6	15.6

# EU meat

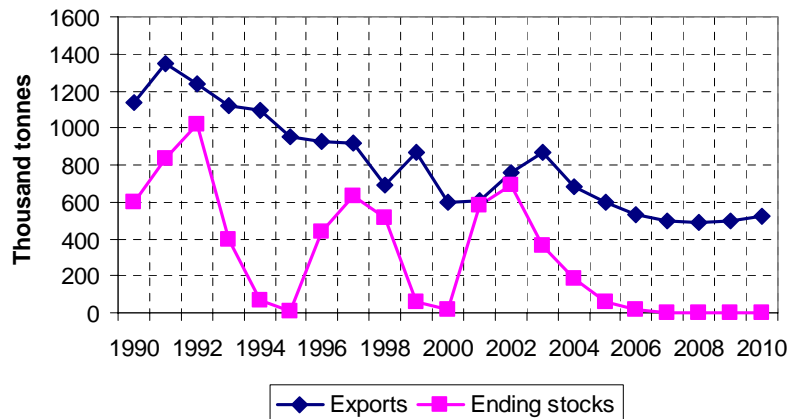
### EU beef production and domestic use

- **BSE**-related concerns in continental Europe have sharply reduced EU consumer beef demand.
- The baseline assumes a recovery in **beef demand** similar to that which occurred after the first BSE crisis in 1996.
- **Balance** between beef supply and domestic demand is restored after 2004.



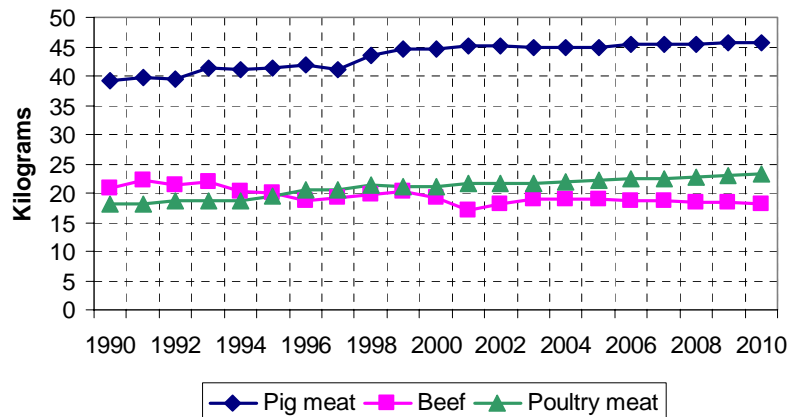
- With beef demand weak, beef **stocks** build in 2001 and 2002.
- Demand recovery and a reduction in **intervention** prices result in no new intervention purchases after 2002.
- The baseline assumes the Commission will aggressively dispose of intervention stocks in **third country** markets willing to accept EU beef in 2002 and 2003.
- Exports decline once the surplus is reduced.

### EU beef exports and ending stocks



### Meat consumption per capita

- Part of the decline in EU beef consumption in 2001 is offset by increased **consumption** of other meats.
- **Pig meat** and **poultry** consumption stagnates from 2002-2004 while beef consumption recovers.
- After 2005, long-term **trends** reassert themselves, as pig meat and poultry consumption increase while beef consumption declines.



## EU-15 meat supply and utilisation

	2000	2001	2002	2003	2004	2005	2006	2007	2008	2009	2010
<b>Beef and veal</b>											
	thousand tonnes										
Production	7,424	7,259	7,382	7,358	7,339	7,261	7,221	7,190	7,172	7,135	7,095
Non-EU imports	350	345	346	346	350	350	351	352	352	352	351
Domestic use	7,221	6,433	6,857	7,169	7,177	7,139	7,086	7,060	7,036	6,987	6,928
Non-EU exports	598	608	757	869	686	595	531	498	488	500	519
Intervention/SPS stocks	15	577	692	358	185	62	17	0	0	0	0
<b>Pig meat</b>											
Production	17,872	17,949	18,139	18,224	18,197	18,263	18,399	18,488	18,572	18,671	18,764
Non-EU imports	60	66	66	66	66	66	66	66	66	66	68
Domestic use	16,732	17,013	17,090	17,024	16,982	17,097	17,253	17,304	17,338	17,431	17,523
Non-EU exports	1,289	1,077	1,081	1,244	1,292	1,226	1,200	1,245	1,297	1,300	1,305
Ending stocks	773	699	733	755	744	750	762	767	770	775	779
<b>Broiler meat</b>											
Production	5,810	5,993	6,023	6,019	6,102	6,171	6,230	6,291	6,351	6,413	6,478
Non-EU imports	184	186	187	187	189	190	191	192	193	194	195
Domestic use	5,332	5,497	5,522	5,522	5,614	5,680	5,739	5,798	5,856	5,913	5,973
Non-EU exports	677	682	686	684	677	680	682	684	687	693	699
Ending stocks	19	18	20	21	21	22	23	23	24	25	25
<b>Other poultry meat</b>											
Production	2,730	2,809	2,823	2,820	2,855	2,885	2,910	2,937	2,963	2,990	3,019
Non-EU imports	96	100	102	105	109	112	115	118	121	124	127
Domestic use	2,563	2,674	2,678	2,669	2,706	2,738	2,767	2,797	2,825	2,853	2,882
Non-EU exports	265	237	240	253	257	256	256	256	258	260	262
Ending stocks	70	68	75	78	78	80	82	84	85	86	87
<b>Sheep meat</b>											
Production	1,118	1,078	1,122	1,128	1,123	1,122	1,120	1,118	1,116	1,114	1,110
Non-EU imports	230	237	233	234	237	239	241	244	246	248	251
Domestic use	1,345	1,313	1,353	1,360	1,358	1,359	1,360	1,360	1,360	1,360	1,359
Non-EU exports	2	2	2	2	2	2	2	2	2	2	2
Ending stocks	18	18	18	18	18	18	18	18	18	18	18
<b>Consumption</b>											
	kilograms per capita, cwe										
Beef and veal	19.20	17.07	18.15	18.94	18.92	18.79	18.62	18.52	18.43	18.28	18.10
Pig meat	44.49	45.14	45.24	44.98	44.77	44.99	45.33	45.39	45.41	45.60	45.78
Broiler meat	14.18	14.58	14.62	14.59	14.80	14.95	15.08	15.21	15.34	15.47	15.61
Other poultry meat	6.81	7.10	7.09	7.05	7.13	7.21	7.27	7.34	7.40	7.46	7.53
Sheep meat	3.58	3.48	3.58	3.59	3.58	3.58	3.57	3.57	3.56	3.56	3.55
Total	88.26	87.37	88.69	89.15	89.21	89.51	89.86	90.02	90.14	90.36	90.57
<b>Premia</b>											
	euro per head										
Male bovine premium	160.0	185.0	210.0	210.0	210.0	210.0	210.0	210.0	210.0	210.0	210.0
Suckler cow premium	163.0	182.0	200.0	200.0	200.0	200.0	200.0	200.0	200.0	200.0	200.0
<b>Prices</b>											
	euro per 100 kilograms										
Cattle reference	130.3	111.1	110.0	107.9	119.9	118.1	117.3	115.5	113.8	113.5	114.0
Pig meat reference	141.4	143.3	130.7	126.9	131.4	129.2	126.5	126.1	126.0	125.1	124.7
Chicken	139.9	143.5	133.6	132.0	132.3	130.1	128.5	127.3	126.5	126.0	125.7
Sheep meat reference	355.0	396.4	346.3	333.9	341.1	338.3	335.7	334.4	333.4	333.2	334.6
Beef intervention	324.2	301.3	278.0	243.3	243.3	243.3	243.3	243.3	243.3	243.3	243.3

# EU livestock and meat prices

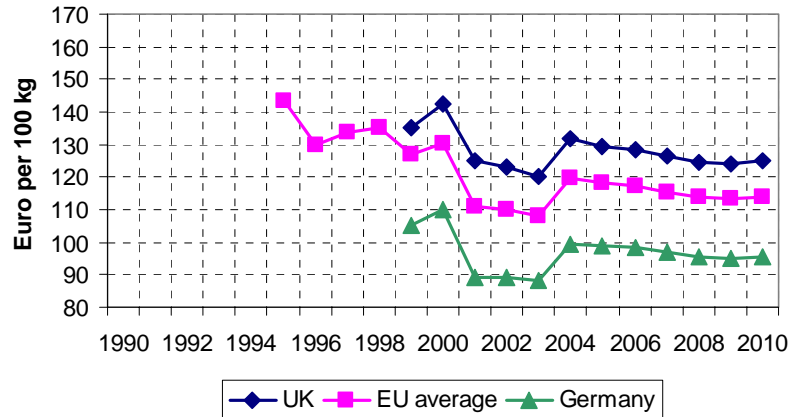
- **EU cattle prices** fall sharply in 2001 in response to consumer concerns about BSE.

- No price **recovery** occurs until 2004, when demand has recovered and stocks have been reduced.

- The projected 2001 price decline is sharper in **Germany**, where consumer concerns are strongest, than in the **UK**.

- Year-to-date price declines are even larger in Germany than in the baseline.

Cattle reference prices

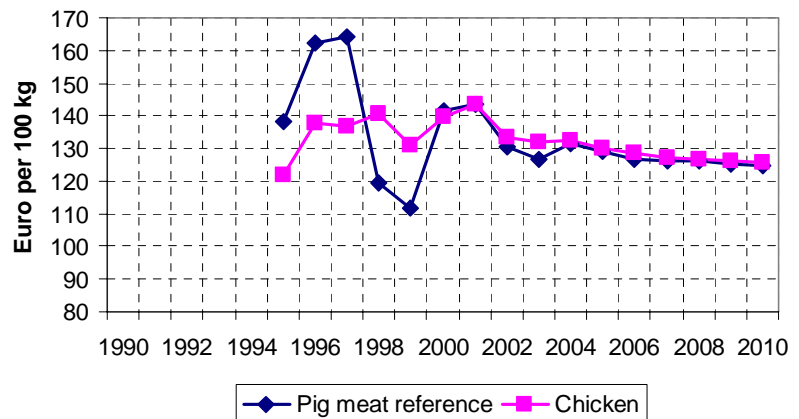


- Current high EU **pig meat** prices generate increased production in 2002 and 2003 just as pig meat demand falls back to more normal levels, leading to price reductions.

- Although price swings are more muted, similar factors cause **chicken** prices to fall in 2002 and 2003.

- Prices for all meats decline slowly after 2004, as EU export demand is limited by a strengthening euro and as domestic demand grows more slowly than productivity.

EU pig meat and chicken prices

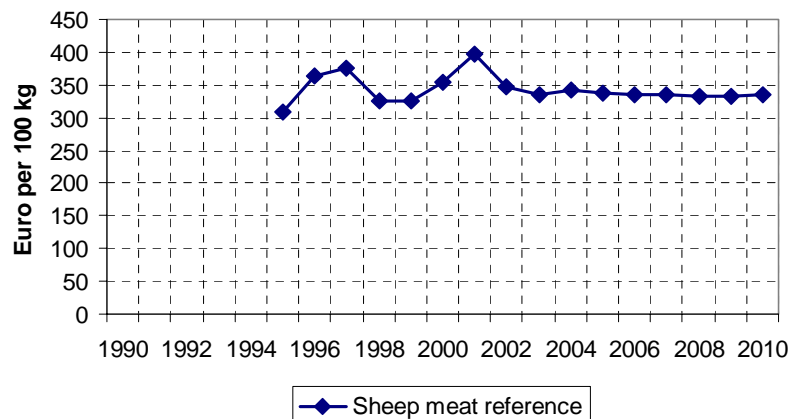


- **EU sheep meat** reference prices also increase in 2001 as EU consumers seek out meats other than beef.

- Sheep meat prices return to more normal levels in 2002.

- **Year-to-date** prices have increased just as dramatically for pig meat as for sheep meat, implying that projected 2001 pig meat prices may be understated.

EU sheep meat reference price

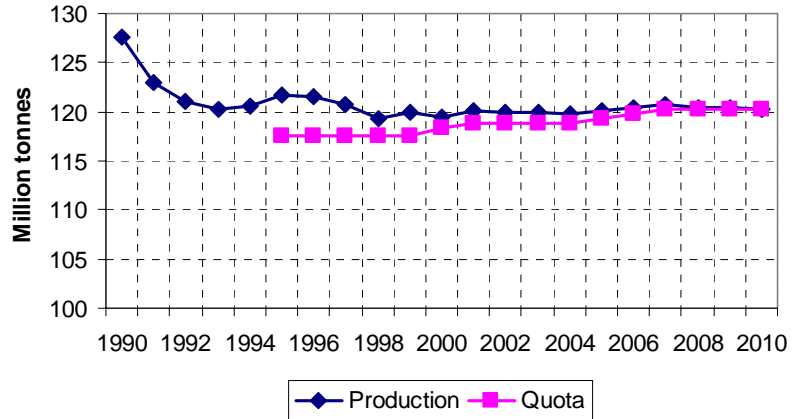


## EU-15 livestock and meat prices

	2000	2001	2002	2003	2004	2005	2006	2007	2008	2009	2010
<b>Cattle reference price</b>											
	euro per 100 kilograms										
EU-15 average	130.3	111.1	110.0	107.9	119.9	118.1	117.3	115.5	113.8	113.5	114.0
France	150.5	131.0	129.1	126.0	140.3	137.8	136.6	134.3	132.4	132.0	132.7
Germany	110.2	89.1	89.4	88.5	99.5	98.7	98.5	97.1	95.6	95.2	95.6
Ireland	113.9	96.1	94.4	92.4	104.0	102.6	101.9	100.2	98.6	98.3	98.8
Italy	81.1	69.3	68.6	67.2	74.5	73.4	72.8	71.6	70.6	70.4	70.8
United Kingdom	142.4	125.1	123.2	120.2	131.5	129.4	128.3	126.3	124.6	124.3	124.9
<b>Pig meat ref. price</b>											
EU-15 average	141.4	143.3	130.7	126.9	131.4	129.2	126.5	126.1	126.0	125.1	124.7
France	140.1	142.0	129.2	125.5	130.1	127.8	125.0	124.7	124.7	123.7	123.3
Germany	143.4	145.0	131.7	127.8	132.6	130.3	127.5	127.1	127.0	126.1	125.6
Italy	157.6	161.5	148.0	143.5	148.1	145.9	142.9	142.5	142.5	141.6	141.1
United Kingdom	158.7	159.7	146.4	142.9	147.5	145.0	142.0	141.3	141.2	140.2	139.7
<b>Chicken price</b>											
EU-15 average	139.9	143.5	133.6	132.0	132.3	130.1	128.5	127.3	126.5	126.0	125.7
France	138.9	142.8	132.9	131.5	131.9	129.7	128.2	127.1	126.3	125.8	125.7
Germany	128.5	132.4	123.0	121.2	121.2	119.1	117.6	116.5	115.6	115.0	114.6
Italy	126.3	129.6	120.9	119.4	119.6	117.6	116.1	115.0	114.2	113.6	113.3
United Kingdom	186.0	189.7	176.5	174.4	174.8	171.8	169.7	168.2	167.1	166.5	166.3
<b>Sheep meat ref. price</b>											
EU-15 average	355.0	396.4	346.3	333.9	341.1	338.3	335.7	334.4	333.4	333.2	334.6
France	424.1	468.3	413.6	399.3	407.5	404.5	401.6	400.0	398.9	398.7	400.2
Germany	343.6	384.0	338.7	327.4	334.7	332.7	330.8	329.9	329.3	329.4	330.9
Ireland	298.6	336.8	290.6	279.2	285.9	283.2	280.9	279.7	278.8	278.5	279.8
Italy	341.2	382.2	341.5	329.7	334.7	331.7	329.1	327.6	326.5	326.2	327.2
United Kingdom	319.1	358.6	309.0	297.5	304.6	301.8	299.4	298.3	297.3	297.1	298.4
<b>Cattle reference price</b>											
	local currency per 100 kilograms										
France (FF)	988	859	847	826	920	904	896	881	868	866	870
Germany (DM)	216	174	175	173	195	193	193	190	187	186	187
Ireland (IR£)	90	76	74	73	82	81	80	79	78	77	78
Italy (1000 IL)	157	134	133	130	144	142	141	139	137	136	137
United Kingdom (£)	86	78	80	80	90	89	89	89	88	88	88
<b>Pig meat ref. price</b>											
France (FF)	919	932	847	823	853	838	820	818	818	812	809
Germany (DM)	281	284	258	250	259	255	249	249	248	247	246
Italy (1000 IL)	305	313	286	278	287	282	277	276	276	274	273
United Kingdom (£)	96	99	95	95	101	100	98	99	99	99	98
<b>Chicken price</b>											
France (FF)	911	937	872	862	865	851	841	834	829	825	824
Germany (DM)	251	259	241	237	237	233	230	228	226	225	224
Italy (1000 IL)	245	251	234	231	232	228	225	223	221	220	219
United Kingdom (£)	113	118	114	116	119	118	118	118	118	117	117
<b>Sheep meat ref. price</b>											
France (FF)	2,782	3,072	2,713	2,619	2,673	2,653	2,634	2,624	2,617	2,615	2,625
Germany (DM)	672	751	662	640	655	651	647	645	644	644	647
Ireland (IR£)	235	265	229	220	225	223	221	220	220	219	220
Italy (1000 IL)	661	740	661	638	648	642	637	634	632	632	634
United Kingdom (£)	194	223	200	198	208	207	208	210	209	209	210

# EU dairy

EU milk production and quota

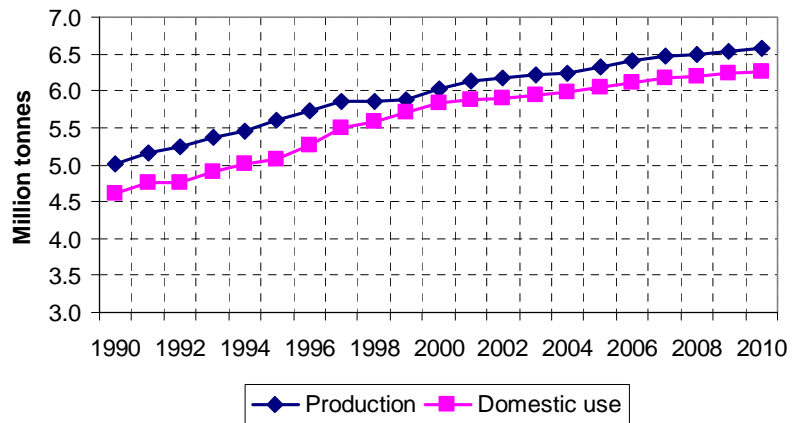


- In spite of an increase in quota in several countries, USDA reports that EU cow's **milk production** declined slightly in 2000.

- Milk production increases in 2001 and again from 2005-2007 in response to **quota** increases.

- The **fat** content of milk is assumed to increase over time, accounting for the apparent decline in milk production relative to the quota.

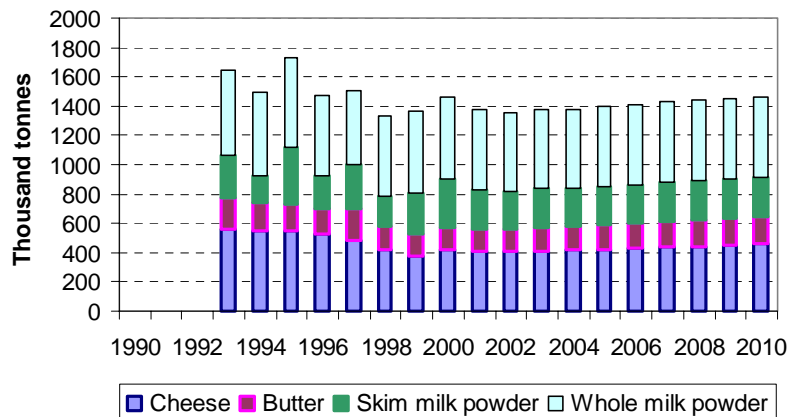
EU cheese production and domestic use



- The health of the EU dairy industry hinges on continued growth in domestic **cheese demand**.

- With trade very small relative to production and domestic consumption, EU **cheese production** grows at roughly the same pace as consumption.

EU dairy product exports



- Mandated reductions in **subsidised exports** have contributed to a decline in EU dairy product exports since the mid-1990s.

- Part of the strength in EU dairy markets in 2000 came from a strong world market for **skim milk powder** that allowed increased EU exports.

- Unsubsidised **cheese** and subsidised **butter** account for most of the modest projected increase in EU dairy exports



## EU-15 dairy supply and utilisation

	2000	2001	2002	2003	2004	2005	2006	2007	2008	2009	2010
	thousand head, end of year										
Dairy cows	20,932	20,758	20,429	20,191	19,930	19,756	19,577	19,399	19,155	18,924	18,698
	kilograms										
Production/cow	5,708	5,789	5,873	5,938	6,010	6,081	6,151	6,221	6,291	6,360	6,429
	million tonnes										
<b>Fluid milk</b>											
Cow's milk production	119.47	120.16	119.98	119.90	119.78	120.13	120.41	120.69	120.50	120.36	120.21
Milk quota	118.38	118.88	118.88	118.88	118.88	119.36	119.84	120.32	120.32	120.32	120.32
Other milk production	3.53	3.54	3.55	3.56	3.57	3.58	3.59	3.60	3.61	3.62	3.63
Fluid consumption	31.65	31.71	31.60	31.47	31.36	31.40	31.43	31.43	31.31	31.20	31.08
Manufacturing use	87.66	88.30	88.31	88.42	88.45	88.80	89.08	89.37	89.34	89.35	89.37
Feed use, net exports	3.69	3.70	3.62	3.57	3.53	3.51	3.50	3.49	3.46	3.42	3.39
	thousand tonnes										
<b>Cheese</b>											
Production	6,029	6,130	6,171	6,211	6,248	6,327	6,399	6,468	6,499	6,536	6,573
Non-EU imports	140	143	145	147	149	151	152	154	156	158	159
Domestic use	5,827	5,868	5,908	5,942	5,976	6,043	6,109	6,172	6,204	6,236	6,267
Non-EU exports	421	406	405	413	417	423	429	437	444	452	460
Ending stocks	1,253	1,252	1,254	1,257	1,261	1,273	1,287	1,300	1,307	1,313	1,318
	thousand tonnes										
<b>Butter</b>											
Production	1,709	1,720	1,720	1,722	1,720	1,717	1,713	1,710	1,708	1,705	1,702
Non-EU imports	74	74	74	74	74	74	74	74	74	74	74
Domestic use	1,648	1,647	1,641	1,634	1,628	1,627	1,626	1,622	1,614	1,606	1,598
Non-EU exports	146	153	157	161	164	168	171	174	175	178	182
Ending stocks	320	313	310	310	313	309	299	287	280	275	271
	thousand tonnes										
<b>Skim powder</b>											
Production	1,035	1,029	1,027	1,024	1,017	1,000	984	970	962	954	945
Non-EU imports	82	82	83	83	83	83	83	83	83	83	83
Domestic use	894	863	866	851	841	820	800	782	774	764	755
Non-EU exports	337	273	258	260	260	262	265	269	271	273	273
Ending stocks	156	131	118	114	113	114	116	119	120	120	120
	thousand tonnes										
<b>Whole powder</b>											
Production	1,083	1,076	1,063	1,063	1,060	1,063	1,065	1,068	1,066	1,064	1,064
Non-EU imports	5	5	5	5	5	5	5	5	5	5	5
Domestic use	530	531	530	528	525	526	526	526	523	520	518
Non-EU exports	563	542	537	540	540	542	544	547	548	549	551
Ending stocks	48	56	57	57	57	58	58	58	58	58	57
	kilograms per capita										
<b>Consumption</b>											
Fluid milk	84.15	84.13	83.64	83.14	82.68	82.63	82.56	82.45	82.02	81.61	81.20
Cheese	15.49	15.57	15.64	15.70	15.75	15.90	16.05	16.19	16.25	16.31	16.37
Butter	4.38	4.37	4.34	4.32	4.29	4.28	4.27	4.25	4.23	4.20	4.18
	euro per 100 kilograms										
<b>Prices</b>											
Milk, 3.7% fat	29.3	29.1	29.2	29.3	29.2	28.5	27.8	27.3	27.3	27.3	27.4
Cheese market	472.5	473.1	473.9	473.9	471.9	462.3	453.4	445.4	445.3	445.5	446.1
Butter market	360.1	355.4	355.1	354.2	352.7	337.9	323.5	311.8	311.8	311.6	311.9
SMP market	251.4	242.4	244.3	246.8	246.7	242.4	239.4	236.2	237.2	238.2	239.2
WMP market	280.0	273.6	273.4	274.5	273.9	267.1	261.0	255.7	256.4	257.2	258.3
Butter intervention	328.2	328.2	328.2	328.2	328.2	311.8	295.4	279.0	279.0	279.0	279.0
SMP intervention	205.5	205.5	205.5	205.5	205.5	195.2	185.0	174.7	174.7	174.7	174.7

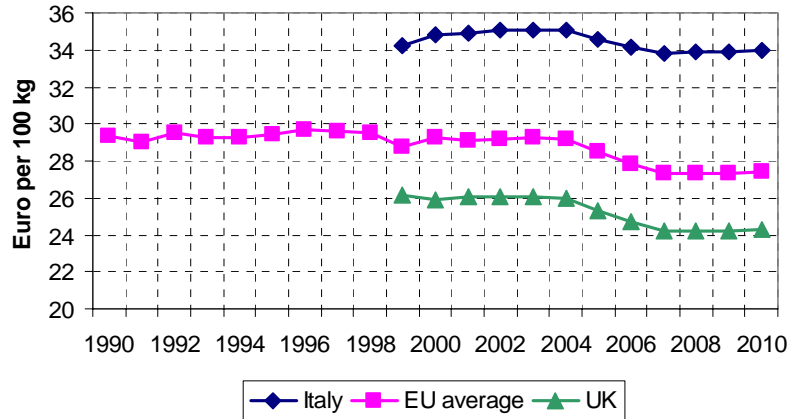
# EU dairy prices

- **Milk** prices are flat from 2001-2004, and then decline from 2005-2007 in response to increased production and lower intervention prices.

- **Italian** milk prices are substantially higher than the EU average, and are less sensitive to price movements elsewhere in Europe.

- **UK** milk prices are below the EU average.

Milk prices, 3.7% fat

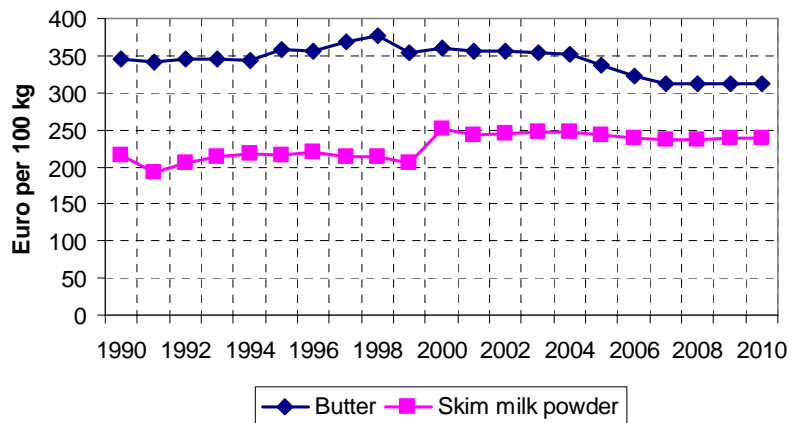


- **Skim milk powder** prices rose in 2000 in response to strong export demand.

- With low stocks, projected SMP prices remain above intervention levels, assuming the **Commission** continues to subsidise exports.

- **Butter** prices are more sensitive to the reductions in intervention prices beginning in 2005, given a greater initial surplus.

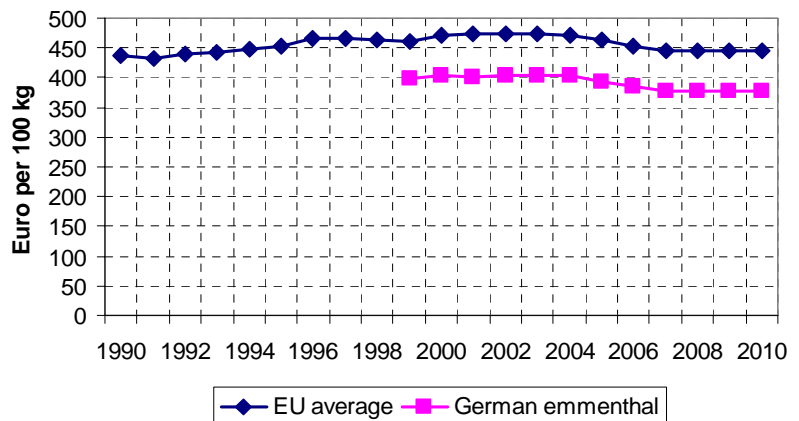
EU butter and skim milk powder prices



- **EU cheese** prices fall slightly after 2004, as the increase in milk production and reduction in intervention prices drive processors to shift even more milk into cheese production.

- The EU-average price reported here is an average of different types of cheeses in different countries.

Cheese prices



## EU-15 dairy product prices

	2000	2001	2002	2003	2004	2005	2006	2007	2008	2009	2010
<b>Fluid milk, 3.7% fat</b>											
	euro per 100 kilograms										
EU-15 average	29.27	29.11	29.22	29.26	29.19	28.49	27.85	27.29	27.30	27.33	27.38
France	28.77	28.50	28.62	28.69	28.61	27.85	27.15	26.55	26.57	26.60	26.65
Germany	29.47	29.16	29.28	29.33	29.25	28.48	27.78	27.17	27.18	27.19	27.23
Ireland	28.51	28.78	28.87	28.98	28.91	28.13	27.45	26.84	26.89	26.95	27.03
Italy	34.81	34.89	35.03	35.08	35.05	34.60	34.18	33.82	33.85	33.91	33.99
United Kingdom	25.91	26.04	26.05	26.08	25.97	25.31	24.71	24.18	24.19	24.22	24.27
<b>Cheese</b>											
EU-15 average	472.5	473.1	473.9	473.9	471.9	462.3	453.4	445.4	445.3	445.5	446.1
France	472.7	470.4	473.0	473.9	472.7	462.3	452.9	444.5	444.5	444.9	445.6
Germany	402.7	402.2	404.2	404.5	403.1	393.4	384.6	376.8	376.5	376.3	376.5
Italy	801.2	804.5	808.4	809.8	809.3	799.9	791.3	783.8	784.8	786.5	788.6
United Kingdom	543.2	549.2	543.9	540.8	535.4	525.7	516.3	507.1	506.5	506.8	507.4
<b>Butter</b>											
EU-15 average	360.1	355.4	355.1	354.2	352.7	337.9	323.5	311.8	311.8	311.6	311.9
France	455.8	453.8	454.4	453.8	452.2	433.0	414.2	399.1	399.2	399.1	399.5
Germany	324.6	319.4	319.8	319.4	318.4	305.5	293.0	282.8	282.9	282.8	283.0
Italy	360.9	356.2	356.0	355.2	353.9	339.1	324.5	312.6	312.2	311.8	312.0
United Kingdom	309.9	302.5	300.0	298.0	295.9	283.0	270.6	260.5	260.4	260.2	260.3
<b>Skim milk powder</b>											
EU-15 average	251.4	242.4	244.3	246.8	246.7	242.4	239.4	236.2	237.2	238.2	239.2
France	243.0	232.7	233.8	236.1	236.0	231.9	229.2	226.2	227.0	228.0	228.9
Germany	244.1	234.7	236.6	238.9	239.0	234.8	231.9	228.8	229.7	230.8	231.8
United Kingdom	279.4	274.2	277.0	280.2	279.7	275.0	271.8	268.3	269.4	270.6	271.8
<b>Whole milk powder</b>											
EU-15 average	280.0	273.6	273.4	274.5	273.9	267.1	261.0	255.7	256.4	257.2	258.3
France	274.4	267.8	267.8	268.9	268.5	261.7	255.7	250.5	251.1	251.9	252.9
Germany	281.2	274.9	274.8	276.0	275.6	268.8	262.9	257.7	258.4	259.2	260.2
United Kingdom	321.0	314.6	313.8	314.6	313.5	305.9	299.2	293.3	294.1	295.2	296.5
<b>Fluid milk, 3.7% fat</b>											
	local currency per 100 kilograms										
France (FF)	188.7	186.9	187.7	188.2	187.7	182.7	178.1	174.2	174.3	174.5	174.8
Germany (DM)	57.6	57.0	57.3	57.4	57.2	55.7	54.3	53.1	53.1	53.2	53.3
Ireland (IR£)	22.5	22.7	22.7	22.8	22.8	22.2	21.6	21.1	21.2	21.2	21.3
Italy (1000 IL)	67.4	67.5	67.8	67.9	67.9	67.0	66.2	65.5	65.6	65.7	65.8
United Kingdom (£)	15.7	16.2	16.9	17.3	17.7	17.4	17.1	17.0	17.0	17.1	17.1
<b>Cheese</b>											
France (FF)	3,100	3,086	3,102	3,109	3,101	3,033	2,971	2,916	2,916	2,918	2,923
Germany (DM)	788	787	790	791	788	769	752	737	736	736	736
Italy (1000 IL)	1,551	1,558	1,565	1,568	1,567	1,549	1,532	1,518	1,520	1,523	1,527
United Kingdom (£)	330	341	353	360	366	361	358	356	357	357	357
<b>Butter</b>											
France (FF)	2,990	2,977	2,980	2,976	2,967	2,840	2,717	2,618	2,619	2,618	2,620
Germany (DM)	635	625	626	625	623	598	573	553	553	553	554
Italy (1000 IL)	699	690	689	688	685	657	628	605	605	604	604
United Kingdom (£)	188	188	195	198	202	194	188	183	183	183	183

## French wheat supply and utilisation

	00/01	01/02	02/03	03/04	04/05	05/06	06/07	07/08	08/09	09/10	10/11
					thousand hectares						
Area harvested	5,200	5,033	5,137	5,129	5,194	5,208	5,235	5,249	5,278	5,300	5,331
					tonnes per hectare						
Yield	7.22	7.36	7.44	7.52	7.61	7.71	7.80	7.90	8.00	8.10	8.20
					million tonnes						
Production	37.53	37.03	38.20	38.59	39.53	40.14	40.85	41.48	42.23	42.93	43.70
Beginning stocks	6.90	6.18	4.85	4.41	4.11	4.05	4.06	4.12	4.17	4.24	4.30
Imports	1.25	1.25	1.25	1.25	1.24	1.23	1.22	1.21	1.20	1.19	1.17
Total supply	45.68	44.46	44.30	44.24	44.88	45.42	46.14	46.81	47.61	48.36	49.18
Domestic use	22.50	22.61	23.07	23.07	23.25	23.42	23.60	23.74	23.88	23.99	24.12
Feed	14.75	14.81	15.16	15.17	15.32	15.45	15.61	15.74	15.86	15.96	16.07
Other	7.75	7.80	7.91	7.90	7.93	7.96	7.99	8.00	8.02	8.03	8.05
Exports	17.00	17.00	16.82	17.06	17.58	17.94	18.42	18.89	19.48	20.07	20.70
Ending stocks	6.18	4.85	4.41	4.11	4.05	4.06	4.12	4.17	4.24	4.30	4.36
Market prices					French francs per tonne, Jan.-Dec.						
Soft wheat	742	737	700	726	719	713	712	714	716	722	728
Durum wheat	892	910	857	892	882	873	871	873	875	882	890
					euro per tonne						
Soft wheat	113.1	112.4	106.6	110.6	109.6	108.7	108.5	108.8	109.1	110.0	111.1
Durum wheat	136.0	138.7	130.6	136.0	134.5	133.2	132.7	133.0	133.3	134.5	135.7

## French barley and maize supply and utilisation

	00/01	01/02	02/03	03/04	04/05	05/06	06/07	07/08	08/09	09/10	10/11
<b>Barley</b>											
Area harvested	1,573	1,642	1,602	1,620	thousand hectares		1,620	1,622	1,623	1,622	1,620
Yield	6.31	6.35	6.45	6.52	tonnes per hectare		6.60	6.68	6.76	6.84	6.92
Production	9.93	10.43	10.33	10.56	million tonnes		10.69	10.83	10.95	11.09	11.23
Beginning stocks	1.55	1.08	0.91	0.85	0.82	0.83	0.86	0.88	0.91	0.94	0.96
Imports	0.05	0.03	0.03	0.03	0.03	0.03	0.03	0.03	0.03	0.03	0.03
Total supply	11.53	11.54	11.27	11.44	11.55	11.69	11.84	12.00	12.17	12.32	12.46
Domestic use	4.75	4.79	4.85	4.85	4.89	4.92	4.94	4.97	5.00	5.02	5.02
Feed	3.00	3.02	3.05	3.05	3.07	3.09	3.10	3.12	3.14	3.15	3.15
Other	1.75	1.77	1.80	1.81	1.82	1.83	1.84	1.85	1.86	1.87	1.87
Exports	5.70	5.84	5.57	5.76	5.82	5.92	6.01	6.12	6.23	6.34	6.46
Ending stocks	1.08	0.91	0.85	0.82	0.83	0.86	0.88	0.91	0.94	0.96	0.98
Market prices	Jan.-Dec. average										
FF/tonne	741	726	698	715	708	700	698	696	696	698	705
euro/tonne	112.9	110.7	106.4	109.0	107.9	106.7	106.4	106.1	106.1	106.4	107.4
<b>Maize for grain</b>											
Area harvested	1,834	1,873	1,895	1,877	thousand hectares		1,846	1,843	1,836	1,830	1,817
Yield	8.98	8.96	9.06	9.18	tonnes per hectare		9.31	9.43	9.54	9.65	9.77
Production	16.47	16.78	17.16	17.23	million tonnes		17.19	17.38	17.51	17.67	17.76
Beginning stocks	0.96	1.23	1.34	1.44	1.47	1.48	1.49	1.49	1.50	1.49	1.49
Imports	0.25	0.25	0.25	0.24	0.25	0.24	0.24	0.24	0.24	0.24	0.24
Total supply	17.68	18.26	18.75	18.91	18.90	19.10	19.24	19.40	19.49	19.58	19.65
Domestic use	8.45	8.68	8.88	8.94	8.95	9.04	9.12	9.20	9.25	9.31	9.36
Feed	6.00	6.26	6.42	6.46	6.46	6.52	6.58	6.64	6.68	6.72	6.75
Other	2.45	2.42	2.47	2.48	2.50	2.52	2.54	2.56	2.57	2.59	2.61
Exports	8.00	8.24	8.43	8.50	8.48	8.57	8.64	8.70	8.75	8.79	8.82
Ending stocks	1.23	1.34	1.44	1.47	1.48	1.49	1.49	1.50	1.49	1.49	1.47
Market prices	Jan.-Dec. average										
FF/tonne	821	776	731	744	742	727	722	715	712	710	712
euro/tonne	125.2	118.3	111.5	113.4	113.2	110.9	110.0	108.9	108.5	108.3	108.5

## French meat supply and utilisation

	2000	2001	2002	2003	2004	2005	2006	2007	2008	2009	2010
<b>Beef and veal</b>											
	thousand tonnes										
Production	1,490	1,480	1,543	1,556	1,555	1,539	1,533	1,528	1,525	1,517	1,508
Imports	325	271	239	249	297	301	299	298	297	296	296
Domestic use	1,511	1,363	1,434	1,502	1,501	1,494	1,484	1,478	1,473	1,463	1,451
Exports	311	278	334	423	358	346	349	348	349	350	354
Intervention/SPS stocks	5	114	127	8	0	0	0	0	0	0	0
<b>Pig meat</b>											
Production	2,337	2,380	2,393	2,404	2,403	2,410	2,424	2,433	2,440	2,448	2,456
Imports	450	457	448	441	443	443	442	440	438	438	439
Domestic use	2,203	2,260	2,278	2,275	2,272	2,285	2,303	2,306	2,308	2,319	2,330
Exports	590	577	563	570	574	568	564	567	570	567	564
Ending stocks	0	0	0	0	0	0	0	0	0	0	0
<b>Broiler meat</b>											
Production	1,085	1,114	1,111	1,102	1,113	1,122	1,129	1,137	1,145	1,154	1,164
Imports	150	154	156	161	165	168	171	173	176	179	181
Domestic use	740	772	776	777	792	802	811	820	829	838	848
Exports	495	496	492	487	486	488	489	491	493	495	497
Ending stocks	0	0	0	0	0	0	0	0	0	0	0
<b>Other poultry meat</b>											
Production	1,155	1,202	1,212	1,210	1,224	1,235	1,245	1,254	1,264	1,273	1,284
Imports	21	20	19	20	20	21	21	22	22	22	23
Domestic use	797	818	824	825	842	853	863	874	884	895	906
Exports	379	403	407	405	403	403	402	402	402	401	402
Ending stocks	0	0	0	0	0	0	0	0	0	0	0
<b>Sheep meat</b>											
Production	139	136	138	139	138	137	137	137	137	136	136
Imports	170	165	171	173	176	176	176	177	177	177	178
Domestic use	298	290	298	300	302	302	302	302	302	302	303
Exports	11	11	11	11	11	11	11	11	11	11	11
Ending stocks	0	0	0	0	0	0	0	0	0	0	0
<b>Consumption</b>											
	kilograms per capita, cwe										
Beef and veal	25.65	23.04	24.13	25.17	25.07	24.86	24.59	24.41	24.24	23.99	23.71
Pig meat	37.40	38.20	38.34	38.15	37.94	38.00	38.16	38.08	37.98	38.03	38.09
Broiler meat	12.56	13.06	13.07	13.02	13.22	13.34	13.44	13.54	13.64	13.74	13.85
Other poultry meat	13.53	13.83	13.87	13.84	14.06	14.19	14.31	14.43	14.55	14.67	14.80
Sheep meat	5.06	4.90	5.02	5.04	5.04	5.03	5.01	4.99	4.97	4.96	4.95
Total	94.21	93.03	94.42	95.21	95.34	95.41	95.50	95.44	95.38	95.38	95.40
<b>Market prices</b>											
	French francs per 100 kilograms										
Cattle reference	988	859	847	826	920	904	896	881	868	866	870
Pig meat reference	919	932	847	823	853	838	820	818	818	812	809
Chicken	911	937	872	862	865	851	841	834	829	825	824
Sheep meat reference	2,782	3,072	2,713	2,619	2,673	2,653	2,634	2,624	2,617	2,615	2,625
	euro per 100 kilograms										
Cattle reference	150.5	131.0	129.1	126.0	140.3	137.8	136.6	134.3	132.4	132.0	132.7
Pig meat reference	140.1	142.0	129.2	125.5	130.1	127.8	125.0	124.7	124.7	123.7	123.3
Chicken	138.9	142.8	132.9	131.5	131.9	129.7	128.2	127.1	126.3	125.8	125.7
Sheep meat reference	424.1	468.3	413.6	399.3	407.5	404.5	401.6	400.0	398.9	398.7	400.2

## French dairy supply and utilisation

	2000	2001	2002	2003	2004	2005	2006	2007	2008	2009	2010
	thousand head, end of year										
Dairy cows	4,425	4,381	4,315	4,273	4,224	4,196	4,166	4,136	4,091	4,049	4,007
	kilograms										
Production/cow	5,625	5,690	5,766	5,822	5,884	5,948	6,010	6,073	6,133	6,194	6,254
	million tonnes										
<b>Fluid milk</b>											
Cow's milk production	24.89	24.93	24.88	24.87	24.86	24.95	25.04	25.12	25.09	25.08	25.06
Milk quota	24.24	24.24	24.24	24.24	24.24	24.36	24.48	24.60	24.60	24.60	24.60
Other milk production	0.72	0.72	0.72	0.72	0.72	0.72	0.72	0.72	0.72	0.72	0.72
Fluid consumption	4.38	4.38	4.37	4.35	4.33	4.33	4.33	4.32	4.30	4.28	4.25
Manufacturing use	20.50	20.52	20.51	20.53	20.54	20.64	20.72	20.81	20.81	20.82	20.83
Feed use, net exports	0.73	0.75	0.72	0.72	0.71	0.71	0.71	0.71	0.70	0.70	0.69
	thousand tonnes										
<b>Cheese</b>											
Production	1,680	1,706	1,722	1,736	1,750	1,779	1,805	1,831	1,843	1,857	1,871
Imports	190	186	185	185	184	181	178	175	174	173	172
Domestic use	1,370	1,385	1,396	1,405	1,412	1,427	1,442	1,456	1,462	1,468	1,475
Exports	480	509	512	515	521	531	540	549	555	561	568
Ending stocks	92	90	90	90	91	92	93	94	95	96	96
	thousand tonnes										
<b>Butter</b>											
Production	440	438	437	436	435	433	431	430	428	427	426
Imports	130	136	135	134	133	135	137	137	136	135	134
Domestic use	500	499	498	496	495	495	495	495	493	491	488
Exports	75	73	73	73	73	74	74	74	73	73	72
Ending stocks	22	23	23	23	24	23	22	20	19	18	17
	thousand tonnes										
<b>Skim powder</b>											
Production	295	289	288	288	287	283	278	275	274	273	271
Imports	70	68	68	69	69	68	68	68	68	68	68
Domestic use	275	263	260	256	253	246	240	234	232	229	226
Exports	90	97	97	101	103	104	106	108	110	112	113
Ending stocks	22	19	18	17	17	17	17	17	17	18	18
	thousand tonnes										
<b>Whole powder</b>											
Production	440	437	432	433	432	436	439	442	443	443	444
Imports	10	10	10	10	10	10	10	10	10	10	10
Domestic use	235	236	235	234	233	233	233	233	232	231	230
Exports	210	208	206	208	209	212	216	219	221	222	224
Ending stocks	27	30	31	31	31	32	32	32	32	32	31
	kilograms per capita										
<b>Consumption</b>											
Fluid milk	74.36	74.02	73.48	72.90	72.26	71.99	71.71	71.38	70.75	70.14	69.54
Cheese	23.26	23.42	23.49	23.56	23.58	23.74	23.90	24.04	24.06	24.08	24.11
Butter	8.49	8.44	8.38	8.32	8.26	8.23	8.21	8.17	8.11	8.05	7.98
	French francs per 100 kilograms										
<b>Market prices</b>											
Milk, 3.7% fat	189	187	188	188	188	183	178	174	174	174	175
Emmenthal	3,100	3,086	3,102	3,109	3,101	3,033	2,971	2,916	2,916	2,918	2,923
Butter	2,990	2,977	2,980	2,976	2,967	2,840	2,717	2,618	2,619	2,618	2,620
Skim milk powder	1,594	1,526	1,534	1,548	1,548	1,521	1,503	1,484	1,489	1,496	1,501
Whole milk powder	1,800	1,756	1,757	1,764	1,761	1,716	1,677	1,643	1,647	1,652	1,659

## German wheat supply and utilisation

	00/01	01/02	02/03	03/04	04/05	05/06	06/07	07/08	08/09	09/10	10/11
					thousand hectares						
Area harvested	2,969	2,920	2,947	2,938	2,948	2,955	2,969	2,975	2,988	2,996	3,009
					tonnes per hectare						
Yield	7.28	7.57	7.68	7.81	7.93	8.06	8.18	8.30	8.43	8.55	8.68
					million tonnes						
Production	21.62	22.09	22.64	22.93	23.39	23.82	24.28	24.70	25.18	25.63	26.11
Beginning stocks	2.70	3.35	2.65	2.40	2.22	2.15	2.14	2.14	2.14	2.15	2.16
Imports	1.75	1.59	1.61	1.58	1.55	1.52	1.49	1.45	1.41	1.37	1.33
Total supply	26.07	27.03	26.90	26.91	27.16	27.49	27.91	28.30	28.74	29.15	29.60
Domestic use	17.22	17.40	17.69	17.62	17.71	17.80	17.91	17.97	18.04	18.08	18.13
Feed	10.00	10.17	10.39	10.35	10.43	10.51	10.61	10.67	10.74	10.79	10.85
Other	7.22	7.23	7.30	7.27	7.28	7.29	7.30	7.30	7.30	7.29	7.28
Exports	5.50	6.97	6.80	7.07	7.29	7.55	7.86	8.18	8.54	8.91	9.30
Ending stocks	3.35	2.65	2.40	2.22	2.15	2.14	2.14	2.14	2.15	2.16	2.16
Market prices					Jan.-Dec. average						
DM/tonne	230.4	222.0	211.5	218.8	216.9	215.0	214.4	214.8	215.1	216.6	218.3
euro/tonne	117.8	113.5	108.1	111.9	110.9	109.9	109.6	109.8	110.0	110.8	111.6



## German barley and maize supply and utilisation

	00/01	01/02	02/03	03/04	04/05	05/06	06/07	07/08	08/09	09/10	10/11
<b>Barley</b>											
Area harvested	2,068	2,105	2,141	2,147	thousand hectares			2,136	2,130	2,122	2,114
Yield	5.85	5.94	6.00	6.06	tonnes per hectare			6.33	6.40	6.47	6.54
Production	12.11	12.51	12.84	13.01	million tonnes			13.52	13.63	13.73	13.82
Beginning stocks	5.16	3.56	2.62	2.30	2.12	2.09	2.12	2.16	2.21	2.26	2.30
Imports	0.50	0.54	0.57	0.57	0.57	0.56	0.56	0.55	0.54	0.54	0.52
Total supply	17.76	16.60	16.03	15.88	15.88	15.97	16.10	16.24	16.39	16.53	16.65
Domestic use	9.71	9.80	9.89	9.85	9.89	9.93	9.97	10.01	10.03	10.05	10.04
Feed	6.51	6.55	6.60	6.59	6.62	6.65	6.69	6.72	6.75	6.77	6.77
Other	3.20	3.26	3.29	3.27	3.27	3.28	3.28	3.28	3.28	3.28	3.27
Exports	4.50	4.18	3.85	3.90	3.90	3.92	3.97	4.02	4.10	4.18	4.28
Ending stocks	3.56	2.62	2.30	2.12	2.09	2.12	2.16	2.21	2.26	2.30	2.33
Market prices	Jan.-Dec. average										
DM/tonne	209.9	205.6	198.2	203.3	201.4	199.2	198.7	198.1	198.1	198.5	200.4
euro/tonne	107.3	105.1	101.4	103.9	103.0	101.9	101.6	101.3	101.3	101.5	102.4
<b>Maize for grain</b>											
Area harvested	361	362	352	343	thousand hectares			334	332	330	327
Yield	9.21	8.63	8.75	8.86	tonnes per hectare			9.34	9.47	9.60	9.73
Production	3.32	3.12	3.08	3.04	million tonnes			3.12	3.14	3.16	3.18
Beginning stocks	0.59	0.91	0.95	0.97	0.97	0.97	0.97	0.97	0.97	0.97	0.97
Imports	1.10	1.12	1.20	1.22	1.21	1.22	1.21	1.22	1.21	1.21	1.20
Total supply	5.01	5.15	5.23	5.24	5.23	5.26	5.28	5.31	5.33	5.34	5.35
Domestic use	3.70	3.81	3.88	3.89	3.88	3.92	3.94	3.97	3.98	4.00	4.01
Feed	2.70	2.79	2.85	2.86	2.85	2.88	2.90	2.93	2.94	2.95	2.96
Other	1.00	1.02	1.03	1.03	1.03	1.04	1.04	1.04	1.05	1.05	1.05
Exports	0.40	0.40	0.37	0.37	0.37	0.37	0.37	0.37	0.37	0.37	0.38
Ending stocks	0.91	0.95	0.97	0.97	0.97	0.97	0.97	0.97	0.97	0.97	0.97
Market prices	Jan.-Dec. average										
DM/tonne	229.0	215.8	203.5	207.3	206.7	202.5	200.8	198.7	197.9	197.5	197.8
euro/tonne	117.1	110.4	104.1	106.0	105.7	103.5	102.7	101.6	101.2	101.0	101.1

## German meat supply and utilisation

	2000	2001	2002	2003	2004	2005	2006	2007	2008	2009	2010
<b>Beef and veal</b>											
	thousand tonnes										
Production	1,310	1,316	1,324	1,302	1,298	1,281	1,271	1,263	1,259	1,249	1,240
Imports	270	170	165	183	222	241	253	257	254	253	252
Domestic use	1,173	904	1,036	1,119	1,138	1,123	1,106	1,096	1,085	1,071	1,055
Exports	427	438	410	430	443	444	436	424	427	431	437
Intervention/SPS stocks	4	148	190	126	64	18	0	0	0	0	0
<b>Pig meat</b>											
Production	4,000	4,004	4,035	4,048	4,036	4,035	4,047	4,050	4,050	4,054	4,055
Imports	1,075	1,110	1,143	1,127	1,122	1,139	1,157	1,156	1,150	1,155	1,159
Domestic use	4,625	4,662	4,723	4,713	4,695	4,713	4,744	4,745	4,737	4,744	4,750
Exports	460	452	455	463	462	461	460	461	464	464	465
Ending stocks	0	0	0	0	0	0	0	0	0	0	0
<b>Broiler meat</b>											
Production	395	415	422	426	434	441	448	455	461	468	476
Imports	365	379	374	370	369	371	373	375	376	376	377
Domestic use	670	708	707	705	712	721	729	738	746	753	760
Exports	90	86	89	91	92	92	92	92	92	92	92
Ending stocks	0	0	0	0	0	0	0	0	0	0	0
<b>Other poultry meat</b>											
Production	355	363	364	364	369	374	379	383	388	393	399
Imports	290	311	316	316	319	323	327	332	335	338	341
Domestic use	580	610	615	614	620	629	637	645	653	660	667
Exports	65	64	65	67	68	68	69	70	71	72	73
Ending stocks	0	0	0	0	0	0	0	0	0	0	0
<b>Sheep meat</b>											
Production	45	44	46	46	45	45	45	45	44	44	44
Imports	61	60	61	62	63	63	64	64	65	65	65
Domestic use	102	100	103	104	104	104	105	105	105	105	105
Exports	4	4	4	4	4	4	4	4	4	4	4
Ending stocks	0	0	0	0	0	0	0	0	0	0	0
<b>Consumption</b>											
	kilograms per capita, cwe										
Beef and veal	14.26	10.98	12.59	13.59	13.83	13.66	13.46	13.34	13.23	13.07	12.90
Pig meat	56.24	56.63	57.36	57.25	57.06	57.33	57.74	57.79	57.76	57.93	58.11
Broiler meat	8.15	8.60	8.59	8.56	8.65	8.77	8.87	8.99	9.09	9.19	9.30
Other poultry meat	7.05	7.42	7.47	7.46	7.54	7.65	7.75	7.86	7.96	8.06	8.16
Sheep meat	1.24	1.22	1.25	1.26	1.26	1.27	1.27	1.28	1.28	1.29	1.29
Total	86.95	84.84	87.26	88.13	88.35	88.67	89.10	89.26	89.33	89.55	89.75
<b>Market prices</b>											
	German marks per 100 kilograms										
Cattle reference	215.5	174.3	174.8	173.0	194.5	193.0	192.6	190.0	187.0	186.2	186.9
Pig meat reference	280.5	283.7	257.6	249.9	259.3	254.8	249.3	248.5	248.4	246.6	245.7
Chicken	251.4	258.9	240.5	237.1	237.1	232.9	230.0	227.8	226.1	224.9	224.2
Sheep meat reference	672.0	751.1	662.4	640.3	654.7	650.7	646.9	645.2	644.1	644.3	647.2
	euro per 100 kilograms										
Cattle reference	110.2	89.1	89.4	88.5	99.5	98.7	98.5	97.1	95.6	95.2	95.6
Pig meat reference	143.4	145.0	131.7	127.8	132.6	130.3	127.5	127.1	127.0	126.1	125.6
Chicken	128.5	132.4	123.0	121.2	121.2	119.1	117.6	116.5	115.6	115.0	114.6
Sheep meat reference	343.6	384.0	338.7	327.4	334.7	332.7	330.8	329.9	329.3	329.4	330.9

## German dairy supply and utilisation

	2000	2001	2002	2003	2004	2005	2006	2007	2008	2009	2010
	thousand head, end of year										
Dairy cows	4,649	4,588	4,506	4,449	4,386	4,344	4,301	4,258	4,200	4,146	4,092
	kilograms										
Production/cow	6,108	6,201	6,301	6,381	6,468	6,556	6,643	6,731	6,817	6,902	6,987
	million tonnes										
<b>Fluid milk</b>											
Cow's milk production	28.40	28.45	28.40	28.39	28.37	28.48	28.57	28.66	28.63	28.61	28.59
Milk quota	27.87	27.87	27.87	27.87	27.87	28.00	28.14	28.28	28.28	28.28	28.28
Other milk production	0.00	0.00	0.00	0.00	0.00	0.00	0.00	0.00	0.00	0.00	0.00
Fluid consumption	5.30	5.30	5.28	5.25	5.23	5.22	5.22	5.22	5.19	5.16	5.12
Manufacturing use	20.12	20.18	20.17	20.22	20.23	20.35	20.45	20.56	20.57	20.60	20.62
Feed use, net exports	2.98	2.97	2.94	2.92	2.91	2.90	2.89	2.89	2.88	2.86	2.85
	thousand tonnes										
<b>Cheese</b>											
Production	1,046	1,063	1,074	1,086	1,096	1,115	1,131	1,148	1,158	1,169	1,181
Imports	395	394	392	390	386	379	372	367	364	361	358
Domestic use	1,053	1,057	1,063	1,067	1,072	1,083	1,094	1,106	1,109	1,113	1,116
Exports	403	400	403	408	410	410	409	408	412	417	422
Ending stocks	15	14	15	15	15	16	16	17	17	18	18
	thousand tonnes										
<b>Butter</b>											
Production	410	408	406	404	402	401	399	398	396	394	392
Imports	170	174	173	172	172	172	173	173	172	170	169
Domestic use	541	541	539	537	535	533	532	530	527	524	521
Exports	40	40	40	40	40	40	41	41	41	41	41
Ending stocks	16	17	17	17	17	17	16	15	15	14	14
	thousand tonnes										
<b>Skim powder</b>											
Production	300	291	287	286	282	278	274	271	267	264	261
Imports	50	50	50	51	51	51	51	50	51	51	51
Domestic use	85	82	85	83	82	80	78	76	75	74	73
Exports	275	261	254	254	251	249	247	245	243	241	239
Ending stocks	10	8	8	7	7	7	7	7	7	7	7
	thousand tonnes										
<b>Whole powder</b>											
Production	215	212	207	207	205	206	206	206	205	204	203
Imports	35	37	37	37	38	37	37	37	37	38	38
Domestic use	165	165	165	164	163	163	163	162	161	160	159
Exports	95	79	80	80	80	80	80	81	81	81	82
Ending stocks	0	5	5	5	5	5	5	5	5	5	5
	kilograms per capita										
<b>Consumption</b>											
Fluid milk	64.45	64.36	64.09	63.77	63.51	63.54	63.56	63.56	63.26	62.97	62.68
Cheese	12.80	12.84	12.91	12.96	13.02	13.17	13.32	13.47	13.53	13.59	13.65
Butter	6.58	6.58	6.55	6.52	6.50	6.49	6.48	6.46	6.43	6.40	6.37
	German marks per 100 kilograms										
<b>Market prices</b>											
Milk, 3.7% fat	57.6	57.0	57.3	57.4	57.2	55.7	54.3	53.1	53.1	53.2	53.3
Emmenthal	787.6	786.7	790.5	791.1	788.3	769.4	752.2	737.0	736.3	736.1	736.4
Butter	634.9	624.8	625.6	624.7	622.8	597.5	573.0	553.2	553.3	553.1	553.6
Skim milk powder	477.4	459.0	462.8	467.3	467.5	459.2	453.5	447.5	449.4	451.4	453.3
Whole milk powder	550.0	537.6	537.4	539.7	539.0	525.8	514.1	504.0	505.4	506.9	508.9

## Irish wheat supply and utilisation

	00/01	01/02	02/03	03/04	04/05	05/06	06/07	07/08	08/09	09/10	10/11
					thousand hectares						
Area harvested	84	81	81	80	81	80	80	80	81	81	81
					tonnes per hectare						
Yield	8.75	8.27	8.43	8.53	8.67	8.80	8.94	9.07	9.19	9.33	9.47
					million tonnes						
Production	0.74	0.67	0.68	0.68	0.70	0.70	0.71	0.72	0.75	0.76	0.77
Beginning stocks	0.03	0.03	0.03	0.03	0.02	0.02	0.02	0.02	0.02	0.03	0.03
Imports	0.75	0.56	0.59	0.61	0.61	0.61	0.60	0.60	0.59	0.59	0.59
Total supply	1.52	1.27	1.30	1.32	1.33	1.34	1.34	1.35	1.36	1.37	1.39
Domestic use	1.26	1.07	1.11	1.13	1.14	1.15	1.15	1.16	1.17	1.18	1.19
Feed	0.87	0.57	0.59	0.60	0.60	0.59	0.58	0.57	0.57	0.56	0.56
Other	0.40	0.50	0.51	0.52	0.54	0.56	0.57	0.58	0.60	0.62	0.63
Exports	0.24	0.17	0.17	0.17	0.17	0.17	0.17	0.17	0.17	0.17	0.17
Ending stocks	0.03	0.03	0.03	0.02	0.02	0.02	0.02	0.02	0.03	0.03	0.03
Feed wheat price					Jan.-Dec. average						
IR£/tonne	83.0	83.5	81.0	83.0	82.5	81.6	81.4	81.2	81.1	81.2	81.2
euro/tonne	105.4	106.1	102.9	105.4	104.7	103.6	103.4	103.0	102.9	103.1	103.1

## Irish barley and maize supply and utilisation

	00/01	01/02	02/03	03/04	04/05	05/06	06/07	07/08	08/09	09/10	10/11		
<b>Barley</b>													
Area harvested	181	179	178	178	thousand hectares		177	177	177	175	175	175	
Yield	6.70	6.48	6.51	6.54	tonnes per hectare		6.56	6.59	6.61	6.63	6.66	6.68	6.69
Production	1.28	1.16	1.16	1.16	million tonnes		1.16	1.16	1.17	1.17	1.17	1.17	1.17
Beginning stocks	0.18	0.18	0.15	0.13	0.13	0.13	0.13	0.13	0.13	0.13	0.13	0.13	0.13
Imports	0.04	0.05	0.09	0.10	0.11	0.11	0.10	0.10	0.11	0.11	0.11	0.11	0.11
Total supply	1.50	1.39	1.39	1.39	1.40	1.40	1.40	1.40	1.40	1.40	1.40	1.41	1.41
Domestic use	1.18	1.12	1.17	1.19	1.20	1.20	1.20	1.20	1.20	1.21	1.21	1.22	1.22
Feed	0.86	0.79	0.82	0.83	0.83	0.82	0.80	0.80	0.79	0.78	0.78	0.78	0.78
Other	0.32	0.33	0.34	0.35	0.37	0.38	0.39	0.40	0.42	0.43	0.44	0.44	0.44
Exports	0.11	0.12	0.09	0.08	0.07	0.07	0.07	0.07	0.07	0.07	0.07	0.07	0.07
Ending stocks	0.18	0.15	0.13	0.13	0.13	0.13	0.13	0.13	0.13	0.13	0.13	0.13	0.13
Market prices	Irish pounds per tonne, Jan.-Dec.												
Feed barley	80.0	80.5	78.0	80.0	79.5	78.6	78.4	78.2	78.1	78.2	78.2	78.2	78.2
Malt barley	89.0	94.5	92.0	94.0	93.5	92.6	92.4	92.2	92.1	92.2	92.2	92.2	92.2
	euro per tonne, Jan.-Dec.												
Feed barley	101.6	102.2	99.1	101.6	100.9	99.8	99.5	99.2	99.1	99.2	99.2	99.2	99.2
Malt barley	113.0	120.0	116.9	119.4	118.7	117.6	117.3	117.0	116.9	117.0	117.0	117.0	117.0
<b>Maize for grain</b>													
Production	0.00	0.00	0.00	0.00	million tonnes		0.00	0.00	0.00	0.00	0.00	0.00	0.00
Beginning stocks	0.00	0.00	0.00	0.00	0.00	0.00	0.00	0.00	0.00	0.00	0.00	0.00	0.00
Imports	0.10	0.10	0.10	0.10	0.10	0.10	0.10	0.10	0.10	0.10	0.10	0.10	0.10
Total supply	0.10	0.10	0.10	0.10	0.10	0.10	0.10	0.10	0.10	0.10	0.10	0.10	0.10
Domestic use	0.10	0.10	0.10	0.10	0.10	0.10	0.10	0.10	0.10	0.10	0.10	0.10	0.10
Feed	0.10	0.10	0.10	0.10	0.10	0.10	0.10	0.10	0.10	0.10	0.10	0.10	0.10
Other	0.00	0.00	0.00	0.00	0.00	0.00	0.00	0.00	0.00	0.00	0.00	0.00	0.00
Exports	0.00	0.00	0.00	0.00	0.00	0.00	0.00	0.00	0.00	0.00	0.00	0.00	0.00
Ending stocks	0.00	0.00	0.00	0.00	0.00	0.00	0.00	0.00	0.00	0.00	0.00	0.00	0.00

## Irish meat supply and utilisation

	2000	2001	2002	2003	2004	2005	2006	2007	2008	2009	2010
<b>thousand tonnes</b>											
<b>Beef and veal</b>											
Production	576	543	556	552	540	531	523	519	515	512	508
Imports	10	19	19	20	19	19	19	19	19	18	18
Domestic use	62	65	65	65	62	62	62	62	62	61	61
Exports	524	389	438	621	535	516	480	476	472	469	465
Intervention/SPS stocks	0	109	181	67	29	0	0	0	0	0	0
<b>Pig meat</b>											
Production	220	237	248	259	264	261	259	258	257	256	257
Imports	32	26	33	36	35	39	43	46	48	51	53
Domestic use	135	135	140	142	145	147	150	152	154	156	159
Exports	120	129	142	153	154	153	152	152	151	151	151
Ending stocks	1	0	0	0	0	0	0	0	0	0	0
<b>Broiler meat</b>											
Production	88	83	82	82	83	84	85	85	86	87	88
Imports	14	18	20	22	24	26	28	30	32	34	36
Domestic use	87	87	90	92	95	97	99	102	104	106	109
Exports	15	14	13	13	13	13	13	14	14	14	15
Ending stocks	2	2	2	2	2	2	2	2	2	2	2
<b>Other poultry meat</b>											
Production	44	42	42	42	42	43	43	43	44	44	44
Imports	7	9	10	11	12	13	14	15	16	17	18
Domestic use	27	28	28	29	30	32	33	34	35	37	38
Exports	24	23	24	24	24	24	24	24	24	24	24
Ending stocks	1	1	1	1	1	1	1	1	1	1	1
<b>Sheep meat</b>											
Production	79	76	73	74	73	72	70	68	67	66	65
Imports	2	2	2	2	2	2	2	2	2	2	2
Domestic use	32	30	34	35	34	33	33	33	33	32	31
Exports	49	48	40	41	42	41	39	37	36	36	36
Stock change	0	0	0	0	0	0	0	0	0	0	0
<b>kilograms per capita, cwe</b>											
Beef and veal	16.37	16.98	16.77	16.76	15.89	15.73	15.46	15.29	15.14	14.90	14.66
Pig meat	35.65	35.41	36.26	36.62	36.88	37.16	37.47	37.57	37.66	37.87	38.12
Broiler meat	22.92	22.79	23.35	23.61	24.24	24.55	24.84	25.16	25.48	25.79	26.13
Other poultry meat	7.25	7.46	7.26	7.38	7.70	7.97	8.19	8.42	8.66	8.90	9.14
Sheep meat	8.35	7.76	8.92	8.91	8.55	8.46	8.33	8.16	7.98	7.78	7.54
Total	90.55	90.40	92.56	93.29	93.26	93.87	94.28	94.60	94.93	95.25	95.60
<b>Irish pounds per 100 kilograms</b>											
<b>Market prices</b>											
Cattle reference	89.7	75.7	74.4	72.8	81.9	80.8	80.2	78.9	77.7	77.4	77.8
Pig meat	102.0	104.4	93.3	89.6	92.9	90.9	88.4	87.8	87.6	86.6	86.0
Sheep meat reference	235.2	265.2	228.9	219.9	225.1	223.1	221.2	220.3	219.5	219.4	220.4
<b>Irish pounds per pair</b>											
Chicken	2.30	2.35	2.21	2.19	2.19	2.16	2.13	2.12	2.11	2.10	2.09
<b>euro per 100 kilograms</b>											
Cattle reference	113.9	96.1	94.4	92.4	104.0	102.6	101.9	100.2	98.6	98.3	98.8
Pig meat	129.5	132.5	118.5	113.8	117.9	115.4	112.3	111.5	111.2	109.9	109.1
Sheep meat reference	298.6	336.8	290.6	279.2	285.9	283.2	280.9	279.7	278.8	278.5	279.8
<b>euro per pair</b>											
Chicken	2.92	2.99	2.80	2.77	2.78	2.74	2.71	2.69	2.67	2.66	2.66

## Irish dairy supply and utilisation

	2000	2001	2002	2003	2004	2005	2006	2007	2008	2009	2010
	thousand head, end of year										
Dairy cows	1,238	1,245	1,230	1,213	1,197	1,182	1,168	1,154	1,138	1,124	1,109
	kilograms										
Production/cow	4,024	4,126	4,169	4,227	4,269	4,311	4,349	4,388	4,427	4,470	4,514
	million tonnes										
<b>Fluid milk</b>											
Cow's milk Production	5.11	5.19	5.20	5.18	5.16	5.14	5.12	5.11	5.09	5.07	5.06
Milk quota	5.00	5.07	5.10	5.10	5.10	5.10	5.10	5.10	5.10	5.10	5.10
Other milk production	0.00	0.00	0.00	0.00	0.00	0.00	0.00	0.00	0.00	0.00	0.00
Fluid consumption	0.51	0.52	0.53	0.53	0.54	0.54	0.55	0.55	0.56	0.56	0.57
Manufacturing use	4.41	4.48	4.48	4.46	4.44	4.42	4.40	4.38	4.35	4.33	4.31
Feed use, net exports	0.19	0.19	0.19	0.19	0.19	0.18	0.18	0.18	0.18	0.17	0.17
	thousand tonnes										
<b>Cheese</b>											
Production	96	94	95	95	95	96	96	97	97	97	98
Imports	15	17	19	21	22	24	25	27	29	30	32
Domestic use	25	28	30	31	33	35	36	38	39	41	43
Exports	85	85	84	84	84	85	85	86	86	86	86
Ending stocks	27	25	25	26	26	26	27	27	27	28	28
	thousand tonnes										
<b>Butter</b>											
Production	145	154	154	154	153	152	152	151	150	150	149
Imports	3	3	2	2	2	3	4	4	3	2	1
Domestic use	15	15	15	15	16	16	16	17	17	17	17
Exports	110	156	148	143	140	139	139	138	136	134	132
Ending stocks	71	57	51	48	48	48	49	49	49	50	51
	thousand tonnes										
<b>Skim powder</b>											
Production	79	91	93	90	88	87	86	85	84	83	82
Imports	2	3	4	4	4	4	4	4	5	5	5
Domestic use	11	11	11	11	11	11	11	11	11	11	11
Exports	125	77	82	81	80	79	78	77	77	76	76
Ending stocks	36	42	46	48	49	51	52	53	54	54	55
	thousand tonnes										
<b>Whole powder</b>											
Production	35	35	35	35	35	35	35	35	35	35	35
Imports	2	2	2	2	2	2	2	2	2	2	2
Domestic use	1	1	1	1	1	1	1	1	1	1	1
Exports	36	36	36	36	36	36	36	36	36	36	36
Ending stocks	1	1	1	1	1	1	1	1	1	1	1
	kilograms per capita										
<b>Consumption</b>											
Fluid milk	134	136	136	136	136	137	137	137	137	137	137
Cheese	7.04	7.46	7.77	8.07	8.38	8.72	9.03	9.34	9.63	9.93	10.24
Butter	3.90	3.95	3.97	3.98	4.00	4.04	4.07	4.10	4.11	4.13	4.14
	kilograms per capita										
<b>Milk price, 3.7% fat</b>											
IR£/100 kg	21.55	21.75	21.82	21.91	21.85	21.26	20.74	20.29	20.32	20.37	20.43
euro/100 kg	27.36	27.62	27.71	27.82	27.74	27.00	26.34	25.76	25.81	25.87	25.94

## Italian wheat supply and utilisation

	00/01	01/02	02/03	03/04	04/05	05/06	06/07	07/08	08/09	09/10	10/11
					thousand hectares						
Area harvested	2,318	2,270	2,273	2,254	2,262	2,251	2,245	2,235	2,230	2,224	2,221
					tonnes per hectare						
Yield	3.14	3.26	3.30	3.34	3.37	3.42	3.46	3.50	3.54	3.58	3.63
					million tonnes						
Production	7.27	7.40	7.49	7.52	7.63	7.69	7.76	7.82	7.90	7.97	8.05
Beginning stocks	0.30	0.45	0.47	0.48	0.48	0.48	0.48	0.48	0.48	0.48	0.47
Imports	6.95	6.74	6.75	6.70	6.67	6.66	6.65	6.63	6.61	6.58	6.55
Total supply	14.52	14.58	14.71	14.70	14.78	14.83	14.89	14.93	14.99	15.03	15.07
Domestic use	11.32	11.30	11.41	11.38	11.45	11.50	11.56	11.60	11.64	11.68	11.72
Feed	1.20	1.11	1.07	1.05	1.05	1.02	1.01	0.99	0.97	0.96	0.95
Other	10.12	10.19	10.34	10.34	10.41	10.48	10.55	10.61	10.67	10.72	10.77
Exports	2.75	2.82	2.82	2.83	2.84	2.85	2.85	2.86	2.86	2.87	2.88
Ending stocks	0.45	0.47	0.48	0.48	0.48	0.48	0.48	0.48	0.48	0.47	0.47
Market prices					thousand Italian lire per tonne, Jan.-Dec.						
Soft wheat	276.9	273.7	259.6	268.8	266.3	264.1	263.6	264.3	265.0	267.2	269.6
Durum wheat	282.1	281.1	266.5	277.9	275.2	273.8	273.9	275.8	277.4	280.7	284.2
					euro per tonne						
Soft wheat	143.0	141.4	134.1	138.8	137.5	136.4	136.1	136.5	136.9	138.0	139.2
Durum wheat	145.7	145.2	137.6	143.5	142.1	141.4	141.5	142.4	143.2	145.0	146.8



## Italian barley and maize supply and utilisation

	00/01	01/02	02/03	03/04	04/05	05/06	06/07	07/08	08/09	09/10	10/11
<b>Barley</b>											
Area harvested	345	349	358	356	thousand hectares		347	345	342	339	336
Yield	3.56	3.68	3.68	3.69	tonnes per hectare		3.74	3.76	3.78	3.80	3.81
Production	1.23	1.28	1.32	1.32	million tonnes		1.30	1.30	1.29	1.29	1.28
Beginning stocks	0.03	0.03	0.03	0.03	0.03	0.03	0.03	0.03	0.03	0.03	0.03
Imports	0.55	0.48	0.45	0.44	0.46	0.46	0.47	0.47	0.48	0.49	0.49
Total supply	1.81	1.80	1.80	1.79	1.80	1.80	1.80	1.80	1.80	1.80	1.80
Domestic use	1.78	1.77	1.77	1.76	1.77	1.77	1.77	1.77	1.77	1.78	1.77
Feed	1.38	1.36	1.36	1.35	1.36	1.36	1.36	1.36	1.36	1.36	1.35
Other	0.40	0.40	0.41	0.41	0.41	0.41	0.41	0.41	0.41	0.42	0.42
Exports	0.00	0.00	0.00	0.00	0.00	0.00	0.00	0.00	0.00	0.00	0.00
Ending stocks	0.03	0.03	0.03	0.03	0.03	0.03	0.03	0.03	0.03	0.03	0.03
Market prices					Jan.-Dec. average						
1000 IL/tonne	280.7	273.5	261.4	267.9	265.6	262.8	262.4	261.9	262.2	263.1	266.0
euro/tonne	144.9	141.3	135.0	138.3	137.2	135.7	135.5	135.3	135.4	135.9	137.4
<b>Maize for grain</b>											
Area harvested	1,100	1,150	1,201	1,194	thousand hectares		1,194	1,198	1,197	1,198	1,198
Yield	9.33	9.63	9.71	9.84	tonnes per hectare		10.19	10.30	10.42	10.53	10.64
Production	10.27	11.08	11.66	11.75	million tonnes		12.17	12.35	12.48	12.62	12.75
Beginning stocks	0.97	0.85	0.91	0.98	1.01	1.02	1.03	1.05	1.06	1.07	1.07
Imports	0.30	0.14	0.14	0.14	0.14	0.14	0.14	0.14	0.14	0.14	0.14
Total supply	11.54	12.07	12.71	12.87	12.96	13.17	13.34	13.53	13.67	13.83	13.96
Domestic use	10.64	11.07	11.36	11.46	11.53	11.69	11.83	11.98	12.10	12.23	12.36
Feed	9.50	9.91	10.18	10.27	10.33	10.48	10.60	10.74	10.86	10.98	11.09
Other	1.14	1.16	1.18	1.19	1.20	1.21	1.22	1.23	1.25	1.26	1.26
Exports	0.05	0.08	0.37	0.41	0.41	0.44	0.47	0.50	0.51	0.52	0.53
Ending stocks	0.85	0.91	0.98	1.01	1.02	1.03	1.05	1.06	1.07	1.07	1.08
Market prices					Jan.-Dec. average						
1000 IL/tonne	307.6	290.2	272.5	276.7	276.1	270.6	268.4	265.7	264.6	264.1	264.5
euro/tonne	158.9	149.9	140.7	142.9	142.6	139.7	138.6	137.2	136.7	136.4	136.6

## Italian meat supply and utilisation

	2000	2001	2002	2003	2004	2005	2006	2007	2008	2009	2010
<b>Beef and veal</b>											
	thousand tonnes										
Production	1,135	1,127	1,128	1,110	1,102	1,091	1,085	1,080	1,075	1,070	1,066
Imports	400	349	346	388	380	385	392	393	394	390	384
Domestic use	1,435	1,290	1,351	1,394	1,385	1,378	1,368	1,363	1,358	1,348	1,336
Exports	100	133	132	119	113	110	109	110	111	112	114
Intervention/SPS stocks	0	53	44	29	12	0	0	0	0	0	0
<b>Pig meat</b>											
Production	1,490	1,501	1,519	1,527	1,528	1,530	1,538	1,543	1,546	1,551	1,555
Imports	710	733	783	765	738	758	774	774	775	785	793
Domestic use	2,110	2,152	2,170	2,165	2,153	2,168	2,188	2,196	2,203	2,216	2,229
Exports	120	114	113	117	119	118	117	118	118	118	118
Ending stocks	270	238	257	269	263	265	271	273	274	277	279
<b>Broiler meat</b>											
Production	608	623	625	623	629	634	639	643	648	653	657
Imports	15	15	14	14	14	13	13	13	12	12	11
Domestic use	603	620	616	610	613	616	617	619	620	621	623
Exports	20	18	23	27	29	32	34	37	40	43	46
Ending stocks	0	0	0	0	0	0	0	0	0	0	0
<b>Other poultry meat</b>											
Production	490	500	501	499	504	508	512	516	519	523	528
Imports	8	9	9	9	9	9	9	9	10	10	10
Domestic use	458	481	479	475	480	486	490	495	499	503	508
Exports	40	28	31	33	32	32	31	30	30	30	29
Ending stocks	0	0	0	0	0	0	0	0	0	0	0
<b>Sheep meat</b>											
Production	72	74	71	71	73	73	73	74	74	74	74
Imports	24	19	24	24	23	23	23	22	22	22	22
Domestic use	93	91	92	93	93	93	93	93	93	93	93
Exports	3	3	3	3	3	3	3	3	3	3	3
Ending stocks	0	0	0	0	0	0	0	0	0	0	0
<b>Consumption</b>											
	kilograms per capita, cwe										
Beef and veal	24.97	22.43	23.47	24.17	23.98	23.83	23.63	23.52	23.42	23.23	23.00
Pig meat	36.71	37.42	37.69	37.52	37.26	37.48	37.80	37.90	37.99	38.19	38.38
Broiler meat	10.49	10.78	10.70	10.57	10.62	10.65	10.66	10.68	10.70	10.71	10.72
Other poultry meat	7.97	8.37	8.31	8.23	8.31	8.39	8.46	8.54	8.61	8.68	8.75
Sheep meat	1.62	1.58	1.60	1.61	1.61	1.61	1.61	1.61	1.61	1.60	1.60
Total	81.75	80.58	81.77	82.09	81.78	81.96	82.16	82.25	82.32	82.41	82.45
<b>Market prices</b>											
	thousand Italian lire per 100 kilograms										
Cattle reference	157.1	134.2	132.7	130.2	144.3	142.1	141.0	138.7	136.8	136.4	137.0
Pig meat reference	305.1	312.7	286.5	277.8	286.8	282.5	276.8	275.9	275.9	274.1	273.2
Chicken	244.6	251.0	234.2	231.2	231.6	227.6	224.9	222.7	221.1	220.0	219.4
Sheep meat reference	660.7	740.0	661.2	638.4	648.2	642.3	637.3	634.3	632.2	631.5	633.6
	euro per 100 kilograms										
Cattle reference	81.1	69.3	68.6	67.2	74.5	73.4	72.8	71.6	70.6	70.4	70.8
Pig meat reference	157.6	161.5	148.0	143.5	148.1	145.9	142.9	142.5	142.5	141.6	141.1
Chicken	126.3	129.6	120.9	119.4	119.6	117.6	116.1	115.0	114.2	113.6	113.3
Sheep meat reference	341.2	382.2	341.5	329.7	334.7	331.7	329.1	327.6	326.5	326.2	327.2

## Italian dairy supply and utilisation

	2000	2001	2002	2003	2004	2005	2006	2007	2008	2009	2010
	thousand head, end of year										
Dairy cows	2,125	2,115	2,073	2,042	2,008	1,976	1,944	1,912	1,880	1,850	1,820
	kilograms										
Production/cow	4,871	4,995	5,086	5,160	5,239	5,314	5,386	5,458	5,536	5,613	5,689
	million tonnes										
<b>Fluid milk</b>											
Cow's milk production	10.35	10.56	10.54	10.54	10.52	10.50	10.47	10.44	10.41	10.38	10.35
Milk quota	10.31	10.53	10.53	10.53	10.53	10.53	10.53	10.53	10.53	10.53	10.53
Other milk production	0.87	0.87	0.87	0.87	0.87	0.87	0.87	0.87	0.87	0.87	0.87
Fluid consumption	2.91	2.91	2.90	2.88	2.86	2.85	2.84	2.83	2.81	2.79	2.77
Manufacturing use	10.16	10.36	10.37	10.38	10.38	10.37	10.35	10.33	10.32	10.31	10.30
Feed use, net exports	-1.85	-1.84	-1.85	-1.85	-1.85	-1.85	-1.85	-1.85	-1.85	-1.85	-1.85
	thousand tonnes										
<b>Cheese</b>											
Production	1,000	1,024	1,026	1,031	1,033	1,034	1,033	1,032	1,033	1,034	1,035
Imports	320	338	343	345	348	361	373	385	390	395	401
Domestic use	1,180	1,184	1,191	1,195	1,200	1,211	1,221	1,231	1,237	1,243	1,249
Exports	180	176	177	180	181	181	182	182	184	185	186
Ending stocks	702	703	704	704	704	707	710	713	715	716	717
	thousand tonnes										
<b>Butter</b>											
Production	101	103	103	103	103	103	103	103	103	104	104
Imports	24	26	25	24	23	24	25	25	24	23	23
Domestic use	102	102	102	101	101	101	101	101	101	100	100
Exports	25	25	25	26	26	26	26	26	27	27	27
Ending stocks	54	56	56	57	57	57	58	59	59	59	59
	thousand tonnes										
<b>Skim powder</b>											
Production	0	0	0	0	0	0	0	0	0	0	0
Imports	120	117	118	115	113	110	107	104	103	101	99
Domestic use	120	117	118	115	113	110	107	104	103	101	99
Exports	0	0	0	0	0	0	0	0	0	0	0
Ending stocks	0	0	0	0	0	0	0	0	0	0	0
	thousand tonnes										
<b>Whole powder</b>											
Production	0	0	0	0	0	0	0	0	0	0	0
Imports	19	19	19	19	19	19	19	19	19	19	19
Domestic use	18	18	18	18	18	18	18	18	18	18	18
Exports	1	1	1	1	1	1	1	1	1	1	1
Ending stocks	0	0	0	0	0	0	0	0	0	0	0
	kilograms per capita										
<b>Consumption</b>											
Fluid milk	50.63	50.63	50.27	49.85	49.45	49.22	49.00	48.76	48.42	48.08	47.73
Cheese	20.53	20.59	20.68	20.72	20.77	20.93	21.09	21.25	21.34	21.42	21.50
Butter	1.77	1.77	1.77	1.76	1.75	1.75	1.75	1.74	1.74	1.73	1.72
	thousand Italian lire per 100 kilograms										
<b>Market prices</b>											
Milk, 3.7% fat	67.4	67.5	67.8	67.9	67.9	67.0	66.2	65.5	65.6	65.7	65.8
Grana padano	1,551.3	1,557.7	1,565.3	1,568.0	1,567.0	1,548.9	1,532.2	1,517.6	1,519.7	1,522.9	1,526.9
Butter	698.7	689.7	689.4	687.8	685.2	656.6	628.4	605.3	604.5	603.8	604.1
	euro per 100 kilograms										
Milk, 3.7% fat	34.8	34.9	35.0	35.1	35.1	34.6	34.2	33.8	33.9	33.9	34.0
Grana padano	801.2	804.5	808.4	809.8	809.3	799.9	791.3	783.8	784.8	786.5	788.6
Butter	360.9	356.2	356.0	355.2	353.9	339.1	324.5	312.6	312.2	311.8	312.0

## United Kingdom wheat supply and utilisation

	00/01	01/02	02/03	03/04	04/05	05/06	06/07	07/08	08/09	09/10	10/11
					thousand hectares						
Area harvested	2,086	2,086	2,093	2,086	2,086	2,085	2,088	2,087	2,090	2,091	2,094
					tonnes per hectare						
Yield	8.01	8.07	8.14	8.23	8.32	8.42	8.52	8.61	8.71	8.80	8.89
					million tonnes						
Production	16.70	16.83	17.03	17.16	17.37	17.55	17.78	17.97	18.20	18.40	18.61
Beginning stocks	1.40	1.60	1.46	1.46	1.36	1.31	1.28	1.26	1.25	1.24	1.24
Imports	1.70	1.69	1.69	1.69	1.68	1.68	1.68	1.67	1.67	1.67	1.66
Total supply	19.80	20.12	20.18	20.31	20.41	20.54	20.74	20.91	21.12	21.31	21.51
Domestic use	13.20	13.28	13.44	13.36	13.41	13.50	13.60	13.67	13.75	13.83	13.90
Feed	6.50	6.48	6.59	6.53	6.56	6.61	6.68	6.74	6.80	6.85	6.90
Other	6.70	6.80	6.85	6.83	6.85	6.88	6.91	6.93	6.96	6.98	7.00
Exports	5.00	5.38	5.28	5.58	5.69	5.76	5.88	5.99	6.12	6.24	6.38
Ending stocks	1.60	1.46	1.46	1.36	1.31	1.28	1.26	1.25	1.24	1.24	1.23
Market prices					Jan.-Dec. average						
£/tonne	67.8	68.7	68.0	72.3	73.6	73.4	74.0	75.2	75.6	76.2	76.9
euro/tonne	111.6	110.6	104.9	108.7	107.8	106.9	106.7	107.0	107.3	108.2	109.2

## UK barley and maize supply and utilisation

	00/01	01/02	02/03	03/04	04/05	05/06	06/07	07/08	08/09	09/10	10/11
<b>Barley</b>											
Area harvested	1,128	1,119	1,128	1,130	thousand hectares		1,152	1,156	1,157	1,158	1,158
Yield	5.76	6.02	6.09	6.17	tonnes per hectare		6.43	6.52	6.61	6.70	6.79
Production	6.50	6.74	6.87	6.97	million tonnes		7.41	7.53	7.65	7.76	7.87
Beginning stocks	2.44	1.79	1.22	1.04	0.86	0.78	0.80	0.84	0.90	0.96	1.00
Imports	0.15	0.15	0.15	0.15	0.15	0.15	0.15	0.15	0.15	0.14	0.14
Total supply	9.09	8.68	8.25	8.17	8.15	8.21	8.35	8.52	8.70	8.86	9.00
Domestic use	4.80	4.90	4.92	4.88	4.88	4.91	4.94	4.97	4.99	5.02	5.04
Feed	2.50	2.60	2.60	2.58	2.58	2.60	2.62	2.65	2.67	2.69	2.70
Other	2.30	2.30	2.31	2.30	2.30	2.31	2.31	2.32	2.33	2.33	2.34
Exports	2.50	2.55	2.29	2.43	2.49	2.50	2.57	2.65	2.74	2.84	2.99
Ending stocks	1.79	1.22	1.04	0.86	0.78	0.80	0.84	0.90	0.96	1.00	0.97
Market prices	Jan.-Dec. average										
£/tonne	62.4	64.3	64.8	68.4	69.7	69.3	69.7	70.3	70.4	70.5	71.2
euro/tonne	102.8	103.5	100.0	102.8	102.0	100.8	100.5	100.2	100.0	100.2	101.1
<b>Maize for grain</b>											
Area harvested	0	0	0	0	thousand hectares		0	0	0	0	0
Yield	0.00	0.00	0.00	0.00	tonnes per hectare		0.00	0.00	0.00	0.00	0.00
Production	0.00	0.00	0.00	0.00	million tonnes		0.00	0.00	0.00	0.00	0.00
Beginning stocks	0.00	0.00	0.00	0.00	0.00	0.00	0.00	0.00	0.00	0.00	0.00
Imports	1.30	1.32	1.34	1.34	1.34	1.35	1.36	1.37	1.38	1.39	1.40
Total supply	1.30	1.32	1.34	1.34	1.34	1.35	1.36	1.37	1.38	1.39	1.40
Domestic use	1.29	1.32	1.33	1.33	1.33	1.35	1.36	1.36	1.37	1.38	1.39
Feed	0.10	0.10	0.11	0.11	0.11	0.11	0.11	0.11	0.11	0.11	0.11
Other	1.19	1.21	1.23	1.23	1.23	1.24	1.25	1.26	1.26	1.27	1.28
Exports	0.01	0.01	0.01	0.01	0.01	0.01	0.01	0.01	0.01	0.01	0.01
Ending stocks	0.00	0.00	0.00	0.00	0.00	0.00	0.00	0.00	0.00	0.00	0.00

## United Kingdom meat supply and utilisation

	2000	2001	2002	2003	2004	2005	2006	2007	2008	2009	2010
<b>thousand tonnes</b>											
<b>Beef and veal</b>											
Production	708	660	666	659	655	643	637	633	631	629	626
Imports	312	332	345	367	371	376	376	375	372	368	365
Domestic use	1,025	986	1,004	1,020	1,007	1,002	995	992	988	982	975
Exports	10	6	7	6	19	17	17	16	15	15	15
Intervention/SPS stocks	0	0	0	0	0	0	0	0	0	0	0
<b>Pig meat</b>											
Production	1,075	1,036	1,031	1,016	1,008	1,012	1,020	1,025	1,031	1,037	1,041
Imports	536	465	590	607	610	613	615	612	609	611	613
Domestic use	1,414	1,410	1,430	1,436	1,434	1,439	1,448	1,450	1,450	1,456	1,462
Exports	200	92	190	187	185	185	187	188	190	191	192
Ending stocks	21	20	21	21	20	20	20	20	20	20	20
<b>Broiler meat</b>											
Production	1,160	1,199	1,211	1,216	1,240	1,257	1,272	1,286	1,299	1,312	1,326
Imports	280	281	284	284	286	288	291	293	297	301	305
Domestic use	1,325	1,351	1,364	1,369	1,396	1,415	1,432	1,449	1,466	1,484	1,503
Exports	130	129	130	131	130	130	130	130	129	129	128
Ending stocks	13	13	14	14	14	15	16	16	17	17	18
<b>Other poultry meat</b>											
Production	375	387	391	393	400	406	411	416	420	424	429
Imports	68	69	67	65	64	64	63	62	61	61	60
Domestic use	355	369	368	365	368	370	372	374	376	378	380
Exports	85	86	89	93	97	99	101	103	105	107	109
Ending stocks	18	18	19	20	20	20	21	21	21	22	22
<b>Sheep meat</b>											
Production	351	320	356	356	353	354	356	356	356	356	355
Imports	110	71	108	108	107	107	106	106	106	107	108
Domestic use	368	362	370	369	366	365	365	364	364	364	363
Exports	91	29	93	95	95	96	97	98	99	99	99
Ending stocks	7	7	7	7	7	7	7	7	7	7	7
<b>kilograms per capita, cwe</b>											
<b>Consumption</b>											
Beef and veal	17.27	16.59	16.84	17.08	16.80	16.67	16.52	16.42	16.33	16.19	16.04
Pig meat	23.82	23.70	23.99	24.04	23.92	23.94	24.04	24.01	23.97	24.01	24.06
Broiler meat	22.32	22.72	22.89	22.92	23.30	23.54	23.77	24.00	24.23	24.47	24.73
Other poultry meat	5.98	6.21	6.17	6.11	6.14	6.16	6.18	6.19	6.21	6.23	6.25
Sheep meat	6.20	6.09	6.21	6.18	6.10	6.08	6.06	6.03	6.02	6.00	5.98
Total	75.60	75.31	76.09	76.34	76.27	76.39	76.56	76.65	76.75	76.90	77.05
<b>British pounds per 100 kilograms</b>											
<b>Market prices</b>											
Cattle reference	86.5	77.7	79.9	79.9	89.9	89.0	88.9	88.7	87.7	87.5	87.9
Pig meat reference	96.4	99.3	95.0	95.0	100.8	99.7	98.4	99.3	99.4	98.7	98.4
Chicken	113.0	117.9	114.5	115.9	119.4	118.0	117.6	118.1	117.7	117.3	117.1
Sheep meat reference	193.9	222.9	200.4	197.8	208.1	207.4	207.6	209.5	209.4	209.2	210.1
<b>euro per 100 kilograms</b>											
Cattle reference	142.4	125.1	123.2	120.2	131.5	129.4	128.3	126.3	124.6	124.3	124.9
Pig meat reference	158.7	159.7	146.4	142.9	147.5	145.0	142.0	141.3	141.2	140.2	139.7
Chicken	186.0	189.7	176.5	174.4	174.8	171.8	169.7	168.2	167.1	166.5	166.3
Sheep meat reference	319.1	358.6	309.0	297.5	304.6	301.8	299.4	298.3	297.3	297.1	298.4

## United Kingdom dairy supply and utilisation

	2000	2001	2002	2003	2004	2005	2006	2007	2008	2009	2010
	thousand head, end of year										
Dairy cows	2,354	2,344	2,316	2,295	2,270	2,258	2,245	2,231	2,210	2,189	2,169
	kilograms										
Production/cow	6,031	6,095	6,172	6,227	6,290	6,350	6,410	6,471	6,526	6,580	6,634
	million tonnes										
<b>Fluid milk</b>											
Cow's milk production	14.20	14.29	14.29	14.29	14.28	14.34	14.39	14.44	14.42	14.41	14.39
Milk quota	14.60	14.61	14.61	14.61	14.61	14.68	14.76	14.83	14.83	14.83	14.83
Other milk production	0.00	0.00	0.00	0.00	0.00	0.00	0.00	0.00	0.00	0.00	0.00
Fluid consumption	6.90	6.93	6.88	6.84	6.80	6.81	6.82	6.83	6.81	6.79	6.77
Manufacturing use	7.03	7.09	7.15	7.19	7.22	7.27	7.31	7.36	7.36	7.37	7.37
Feed use, net exports	0.27	0.26	0.26	0.26	0.26	0.26	0.25	0.25	0.25	0.25	0.25
	thousand tonnes										
<b>Cheese</b>											
Production	330	344	349	353	358	366	373	380	383	386	390
Imports	238	287	284	284	282	284	286	287	288	291	293
Domestic use	575	581	584	588	591	598	606	614	619	625	631
Exports	56	50	50	49	49	49	50	50	50	50	50
Ending stocks	47	48	48	48	48	50	53	56	57	59	61
	thousand tonnes										
<b>Butter</b>											
Production	146	146	148	150	151	151	152	152	153	153	154
Imports	110	100	95	92	90	90	91	90	89	89	89
Domestic use	185	185	184	183	183	183	183	183	182	182	182
Exports	48	53	55	56	57	58	59	60	60	61	61
Ending stocks	45	52	56	59	60	61	61	60	60	60	60
	thousand tonnes										
<b>Skim powder</b>											
Production	99	95	98	100	101	99	97	97	96	94	93
Imports	11	13	14	14	14	14	14	14	15	15	15
Domestic use	74	73	72	71	70	69	67	66	66	65	65
Exports	68	50	48	44	45	45	44	45	45	44	43
Ending stocks	29	14	6	5	5	5	5	5	5	5	5
	thousand tonnes										
<b>Whole powder</b>											
Production	107	105	105	106	106	106	106	106	106	105	105
Imports	10	10	10	10	10	10	10	10	10	10	10
Domestic use	17	17	17	17	17	17	17	17	17	17	17
Exports	101	98	99	100	100	100	100	100	99	99	99
Ending stocks	2	2	2	2	2	2	2	2	2	2	2
	kilograms per capita										
<b>Consumption</b>											
Fluid milk	116.26	116.54	115.39	114.46	113.44	113.33	113.22	113.04	112.46	111.97	111.47
Cheese	9.69	9.77	9.79	9.84	9.85	9.95	10.06	10.17	10.23	10.31	10.39
Butter	3.12	3.12	3.09	3.07	3.05	3.04	3.04	3.03	3.01	3.00	2.99
	British pounds per 100 kilograms										
<b>Market prices</b>											
Milk, 3.7% fat	15.7	16.2	16.9	17.3	17.7	17.4	17.1	17.0	17.0	17.1	17.1
Emmenthal	330.0	341.4	352.8	359.5	365.8	361.3	357.9	356.1	356.7	356.9	357.3
Butter	188.3	188.1	194.6	198.1	202.2	194.5	187.6	182.9	183.4	183.3	183.3
Skim milk powder	169.7	170.5	179.6	186.3	191.1	189.0	188.4	188.4	189.7	190.6	191.4
Whole milk powder	195.0	195.6	203.5	209.2	214.2	210.3	207.4	206.0	207.1	207.9	208.8

## Other EU wheat supply and utilisation

	00/01	01/02	02/03	03/04	04/05	05/06	06/07	07/08	08/09	09/10	10/11
					thousand hectares						
Area harvested	5,278	5,111	5,254	5,230	5,238	5,245	5,261	5,268	5,282	5,295	5,314
					tonnes per hectare						
Yield	4.00	3.95	3.99	4.05	4.10	4.16	4.22	4.27	4.33	4.39	4.45
					million tonnes						
Production	21.09	20.19	20.98	21.17	21.50	21.83	22.19	22.51	22.88	23.24	23.62
Beginning stocks	2.93	3.94	3.50	3.43	3.34	3.33	3.35	3.38	3.41	3.44	3.47
Imports	12.38	12.11	12.25	12.06	12.05	12.02	11.96	11.87	11.76	11.62	11.48
Total supply	36.39	36.23	36.73	36.66	36.90	37.18	37.50	37.76	38.05	38.30	38.57
Domestic use	27.03	27.19	27.81	27.75	27.99	28.24	28.51	28.70	28.91	29.08	29.26
Feed	14.33	14.41	14.89	14.86	15.06	15.26	15.50	15.67	15.86	16.02	16.20
Other	12.69	12.78	12.93	12.89	12.94	12.98	13.01	13.03	13.05	13.06	13.07
Exports	5.41	5.55	5.49	5.57	5.57	5.58	5.61	5.65	5.70	5.76	5.82
Ending stocks	3.94	3.50	3.43	3.34	3.33	3.35	3.38	3.41	3.44	3.47	3.49



## Other EU barley and maize supply and utilisation

	00/01	01/02	02/03	03/04	04/05	05/06	06/07	07/08	08/09	09/10	10/11
<b>Barley</b>											
Area harvested	5,512	5,636	5,576	5,585	thousand hectares		5,560	5,544	5,528	5,509	5,489
Yield	3.73	3.39	3.42	3.44	tonnes per hectare		3.50	3.53	3.55	3.57	3.60
Production	20.53	19.13	19.06	19.19	million tonnes		19.48	19.55	19.62	19.68	19.74
Beginning stocks	2.39	3.66	3.28	3.14	3.06	3.05	3.07	3.10	3.13	3.16	3.19
Imports	2.87	2.63	3.05	2.98	3.01	3.08	3.16	3.23	3.27	3.33	3.33
Total supply	25.80	25.42	25.38	25.31	25.41	25.55	25.72	25.88	26.03	26.17	26.25
Domestic use	20.32	20.27	20.47	20.46	20.57	20.71	20.87	21.02	21.15	21.28	21.35
Feed	16.59	16.51	16.68	16.68	16.79	16.92	17.08	17.22	17.35	17.48	17.56
Other	3.73	3.75	3.79	3.77	3.78	3.79	3.80	3.80	3.80	3.80	3.79
Exports	1.85	1.88	1.77	1.79	1.79	1.77	1.75	1.73	1.72	1.71	1.70
Ending stocks	3.66	3.28	3.14	3.06	3.05	3.07	3.10	3.13	3.16	3.19	3.20
<b>Maize for grain</b>											
Area harvested	979	1,006	1,007	993	thousand hectares		976	975	970	967	964
Yield	8.76	8.51	8.61	8.73	tonnes per hectare		9.08	9.20	9.33	9.45	9.58
Production	8.57	8.56	8.66	8.66	million tonnes		8.86	8.97	9.05	9.14	9.23
Beginning stocks	1.58	1.58	1.61	1.66	1.67	1.68	1.69	1.70	1.72	1.73	1.74
Imports	7.56	8.14	8.46	8.54	8.54	8.64	8.73	8.81	8.85	8.90	8.94
Total supply	17.71	18.28	18.74	18.87	18.87	19.09	19.28	19.48	19.62	19.77	19.91
Domestic use	15.67	16.24	16.67	16.79	16.79	17.00	17.18	17.37	17.50	17.64	17.78
Feed	12.66	13.16	13.54	13.65	13.64	13.83	13.99	14.16	14.28	14.41	14.53
Other	3.01	3.07	3.13	3.13	3.15	3.17	3.19	3.21	3.22	3.23	3.24
Exports	0.46	0.43	0.41	0.41	0.41	0.40	0.40	0.39	0.39	0.39	0.39
Ending stocks	1.58	1.61	1.66	1.67	1.68	1.69	1.70	1.72	1.73	1.74	1.75

## Other EU meat supply and utilisation

	2000	2001	2002	2003	2004	2005	2006	2007	2008	2009	2010
<b>Beef and veal</b>	thousand tonnes										
Production	2,205	2,133	2,166	2,179	2,189	2,176	2,171	2,167	2,167	2,158	2,147
Imports	701	639	634	654	692	706	717	725	732	737	744
Domestic use	2,015	1,825	1,967	2,069	2,082	2,079	2,071	2,070	2,069	2,062	2,051
Exports	894	800	837	786	847	838	844	840	829	834	840
Intervention/SPS stocks	6	153	149	128	79	44	17	0	0	0	0
<b>Pig meat</b>											
Production	8,750	8,791	8,913	8,968	8,959	9,016	9,111	9,179	9,247	9,325	9,400
Imports	652	672	650	638	645	648	648	647	648	648	649
Domestic use	6,245	6,394	6,350	6,293	6,283	6,345	6,420	6,456	6,487	6,540	6,593
Exports	3,194	3,110	3,198	3,303	3,325	3,315	3,332	3,368	3,406	3,431	3,454
Ending stocks	481	440	455	465	461	465	470	473	475	478	480
<b>Broiler meat</b>											
Production	2,474	2,559	2,571	2,569	2,603	2,633	2,658	2,684	2,710	2,738	2,768
Imports	280	275	270	270	271	269	267	266	265	263	261
Domestic use	1,907	1,959	1,968	1,969	2,006	2,030	2,050	2,071	2,091	2,111	2,131
Exports	847	875	873	870	868	872	876	879	884	891	898
Ending stocks	4	4	4	5	5	5	5	5	5	5	5
<b>Other poultry meat</b>											
Production	311	314	313	312	315	319	322	325	328	332	335
Imports	266	281	292	289	289	292	293	294	294	294	295
Domestic use	346	366	364	361	365	369	372	375	378	381	384
Exports	236	231	235	238	238	240	241	242	243	244	245
Ending stocks	51	48	55	57	58	59	60	62	62	63	63
<b>Sheep meat</b>											
Production	432	427	438	442	441	440	440	439	439	438	436
Imports	48	44	47	48	49	50	51	52	53	54	55
Domestic use	452	441	455	459	460	461	462	462	463	463	463
Exports	29	31	30	31	30	30	29	29	29	29	28
Ending stocks	11	11	11	11	11	11	11	11	11	11	11
<b>Consumption</b>	kilograms per capita, cwe										
Beef and veal	17.62	15.92	17.12	17.95	18.03	17.96	17.86	17.82	17.78	17.68	17.56
Pig meat	54.62	55.78	55.24	54.61	54.40	54.81	55.35	55.55	55.72	56.08	56.44
Broiler meat	16.68	17.09	17.12	17.09	17.36	17.53	17.67	17.82	17.96	18.10	18.25
Other poultry meat	3.02	3.20	3.17	3.13	3.16	3.19	3.21	3.23	3.25	3.27	3.29
Sheep meat	3.96	3.85	3.96	3.98	3.98	3.98	3.98	3.98	3.97	3.97	3.96
Total	95.91	95.82	96.61	96.77	96.93	97.47	98.06	98.39	98.68	99.09	99.50

## Other EU dairy supply and utilisation

	2000	2001	2002	2003	2004	2005	2006	2007	2008	2009	2010
	thousand head, end of year										
Dairy cows	6,140	6,084	5,989	5,920	5,844	5,800	5,754	5,707	5,636	5,568	5,501
	kilograms										
Production/cow	5,948	6,039	6,123	6,188	6,261	6,331	6,400	6,470	6,541	6,611	6,681
	million tonnes										
<b>Fluid milk</b>											
Cow's milk production	36.52	36.74	36.67	36.63	36.59	36.72	36.82	36.92	36.86	36.81	36.75
Milk quota	36.36	36.57	36.54	36.54	36.54	36.69	36.84	36.99	36.99	36.99	36.99
Other milk production	1.94	1.95	1.96	1.97	1.98	1.99	2.00	2.01	2.02	2.03	2.04
Fluid consumption	11.65	11.67	11.65	11.63	11.62	11.65	11.67	11.69	11.65	11.62	11.58
Manufacturing use	25.45	25.66	25.63	25.64	25.63	25.74	25.84	25.94	25.92	25.93	25.93
Feed use, net exports	1.36	1.36	1.34	1.33	1.32	1.31	1.31	1.31	1.30	1.29	1.28
	thousand tonnes										
<b>Cheese</b>											
Production	1,877	1,899	1,905	1,910	1,916	1,939	1,960	1,980	1,985	1,992	1,999
Imports	588	581	582	582	582	577	571	566	566	566	567
Domestic use	1,624	1,632	1,645	1,656	1,669	1,690	1,709	1,727	1,736	1,745	1,753
Exports	823	847	839	835	827	822	817	813	812	812	811
Ending stocks	370	371	373	375	377	382	387	393	395	397	399
	thousand tonnes										
<b>Butter</b>											
Production	467	471	473	475	476	476	476	476	477	478	478
Imports	169	176	176	175	174	170	167	166	167	168	168
Domestic use	305	304	303	301	299	299	298	296	294	292	290
Exports	380	347	348	349	349	352	355	354	356	357	359
Ending stocks	112	109	106	106	107	102	92	83	78	74	70
	thousand tonnes										
<b>Skim powder</b>											
Production	262	262	261	261	259	253	248	243	241	240	237
Imports	292	285	289	289	288	284	280	276	275	273	272
Domestic use	329	318	320	315	312	304	297	290	287	284	281
Exports	242	241	236	239	238	234	231	228	229	229	229
Ending stocks	59	47	41	37	36	35	36	36	36	36	36
	thousand tonnes										
<b>Whole powder</b>											
Production	286	288	283	283	282	281	280	279	278	278	277
Imports	168	167	169	172	174	174	174	175	177	179	182
Domestic use	94	94	94	94	94	94	94	94	94	94	93
Exports	359	361	358	361	362	360	360	360	361	363	365
Ending stocks	18	18	18	18	18	18	18	18	18	18	18
	kilograms per capita										
<b>Consumption</b>											
Fluid milk	101.92	101.79	101.40	100.93	100.56	100.61	100.61	100.58	100.10	99.63	99.17
Cheese	14.20	14.24	14.31	14.37	14.45	14.59	14.73	14.86	14.91	14.96	15.01
Butter	2.67	2.65	2.63	2.61	2.59	2.58	2.57	2.55	2.53	2.51	2.48