

P. L. 94-171 COUNTY BLOCK MAP (CENSUS 2000)

40 173980N
94 917873W

40 173980N
94 745422W

GEOGRAPHIC AREAS LEGEND

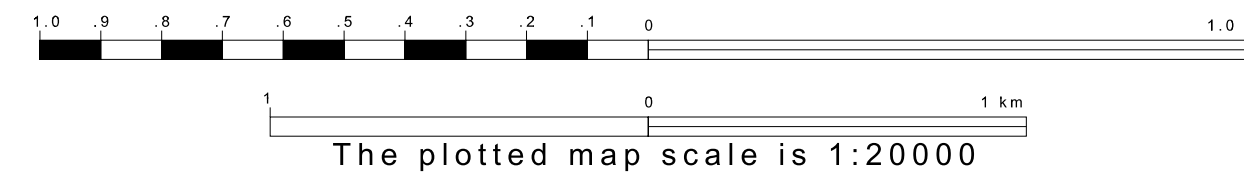
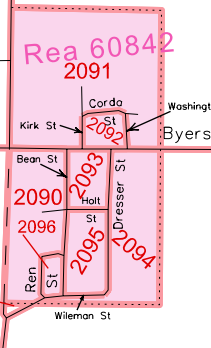
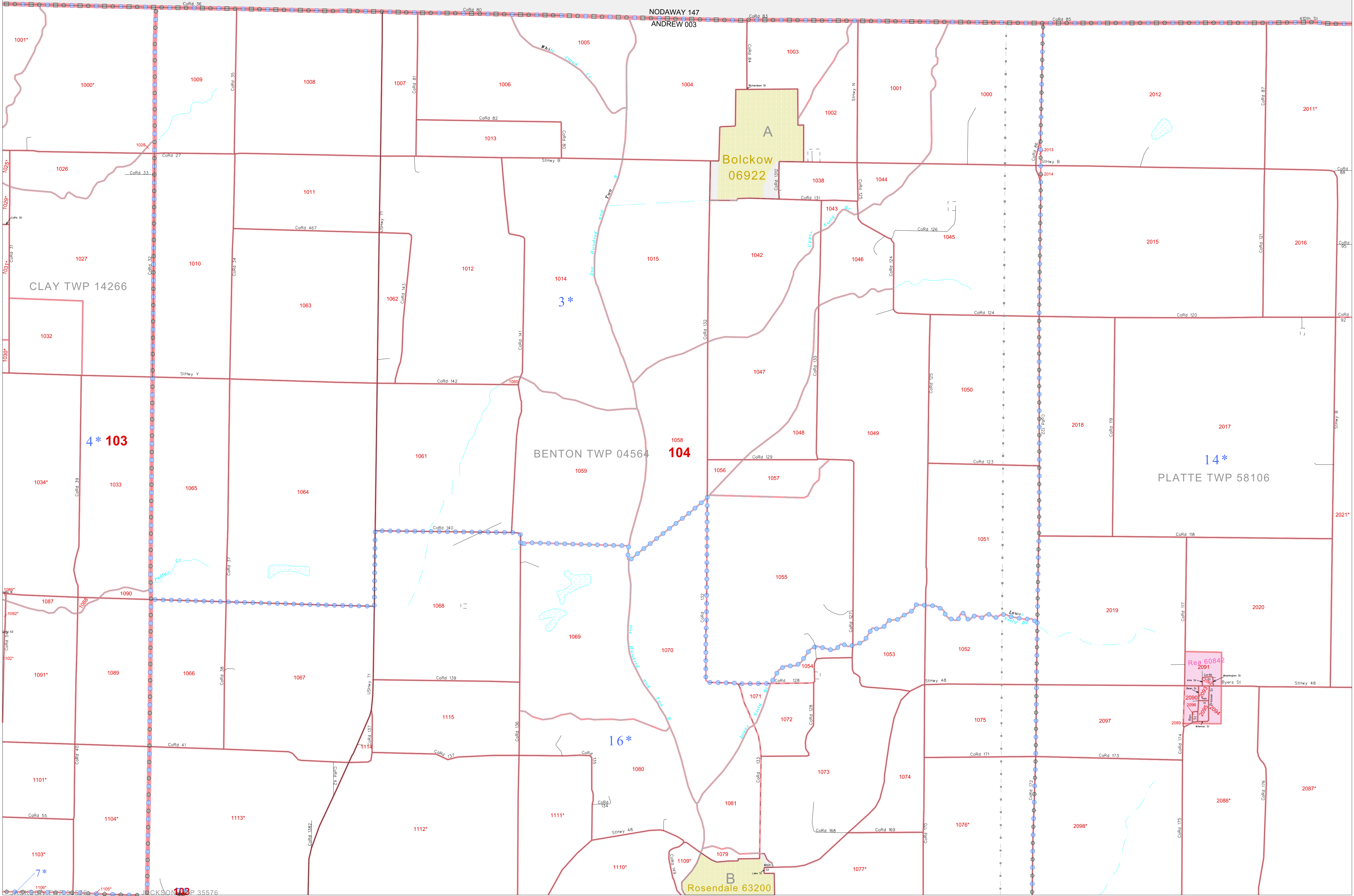
| SYMBOL | NAME STYLE |
|-----------|--------------------------------------|
| ***** | INTERNATIONAL |
| ////// | STATE |
| ■■■■■ | COUNTY |
| ○○○○○ | MINOR CIVIL DIV ¹ |
| ■ ■ ■ ■ ■ | Incorporated Place ² |
| ■ ■ ■ ■ ■ | Census Designated Place ² |
| | Corporate Offset Boundary |
| ●●●●● | Voting District ³ |
| ■■■■■ | Census Tract |
| ■■■■■ | Block ³ |

1 A "*" following a place name indicates that the place is coterminous with a MCD. A "-" indicates that the place is also a false MCD. In both cases, the MCD name is shown only when it differs from the place name.

2 A "*" following a VTD code indicates an actual voting district. Its absence indicates that the VTD is a pseudo voting district or no information is available as to its status.

3 A "*" following a block number indicates that the block number is repeated elsewhere in the block.

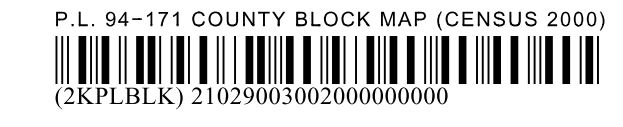
Military Inset Out Area



Key to Adjacent Sheets

| | | |
|---|---|---|
| 1 | 2 | 3 |
| 4 | 5 | 6 |

ST: Missouri (29)
COU: Andrew (003)
SHEET 2 OF 9 PARENT SHEETS



All legal boundaries and names are as of January 1, 2000. The boundaries shown on this map are for Census Bureau statistical data collection and tabulation purposes only; their depiction and designation for statistical purposes does not constitute a determination of jurisdictional authority or rights of ownership or entitlement. U.S. DEPARTMENT OF COMMERCE Economics and Statistics Administration U.S. Census Bureau