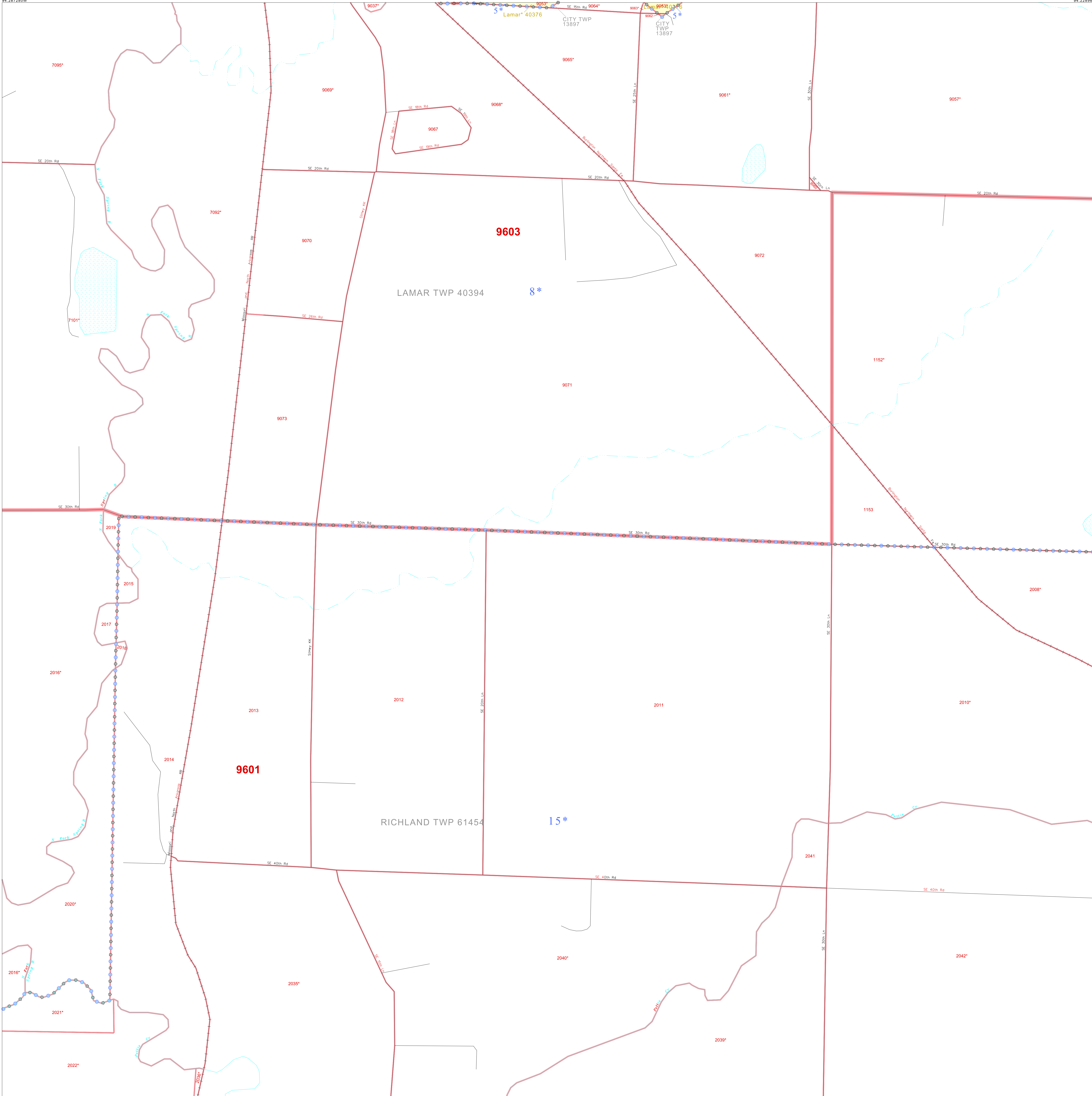


P. L. 94-171 COUNTY BLOCK MAP (CENSUS 2000)

37 478223N
94 287280W

37 478223N
94 288680W



GEOGRAPHIC AREAS LEGEND

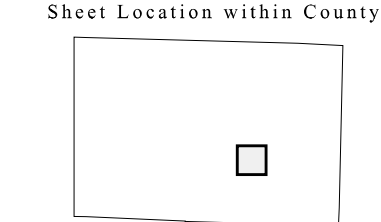
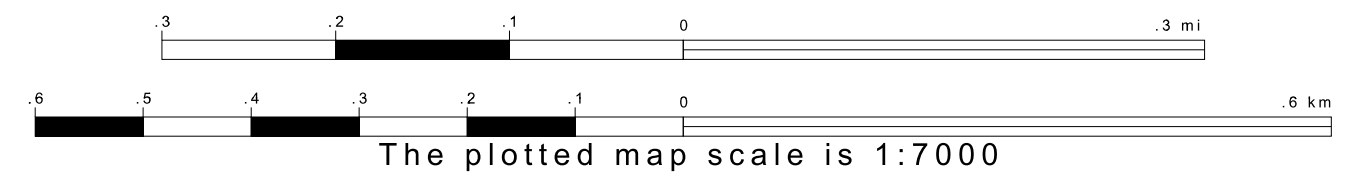
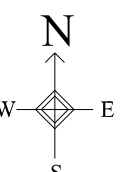
| SYMBOL | NAME STYLE |
|------------------|--------------------------------------|
| ***** | INTERNATIONAL |
| /////// | STATE |
| ■■■■■ | COUNTY |
| ●●●●● | MINOR CIVIL DIV. ¹ |
| Yellow box | Incorporated Place ¹ |
| Light yellow box | Census Designated Place ¹ |
| Red dashed line | Corporate Offset Boundary |
| Blue dashed line | Voting District ² |
| Red solid line | Census Tract |
| Blue dashed line | BLOCK ³ |

Military Inset Out Area

¹ A "*" following a place name indicates that the place is coterminous with a MCD. A "-" indicates that the place is also a false MCD. In both cases, the MCD name is shown only when it differs from the place name.
² A "*" following a VTD code indicates an actual voting district. Its absence indicates that the VTD is a pseudo voting district or no information is available as to its status.
³ A "-" following a block number indicates that the block number is repeated elsewhere in the block.

37 431764N
94 287280W

37 431764N
94 289080W



Key to Adjacent Sheets

| | | |
|----|----|----|
| 36 | 37 | 38 |
| 46 | 47 | 48 |
| 56 | 57 | 58 |

ST: Missouri (29)
 COU: Barton (011)
 SHEET 47 OF 70 PARENT SHEETS

All legal boundaries and names are as of January 1, 2000. The boundaries shown on this map are for Census Bureau statistical data collection and tabulation purposes only; their depiction and designation for statistical purposes does not constitute a determination of jurisdictional authority or rights of ownership or entitlement. U.S. DEPARTMENT OF COMMERCE Economics and Statistics Administration U.S. Census Bureau

