

P.L. 94-171 VOTING DISTRICT/STATE LEGISLATIVE DISTRICT OUTLINE MAP (CENSUS 2000)

GEOGRAPHIC AREAS LEGEND

SYMBOL	NAME STYLE
*****	INTERNATIONAL
//////	STATE
□□□□	COUNTY
○ ○ ○ ○	MINOR CIVIL DIV. ¹
■ ■ ■ ■	Incorporated Place ¹
■ ■ ■ ■	Census Designated Place ²
▬▬▬▬	Voting District
● ● ● ●	SLD-Senate
▲ ▲ ▲ ▲	SLD-House
□ □ □ □	Minority
□ □ □ □	Inset
□ □ □ □	Out Area

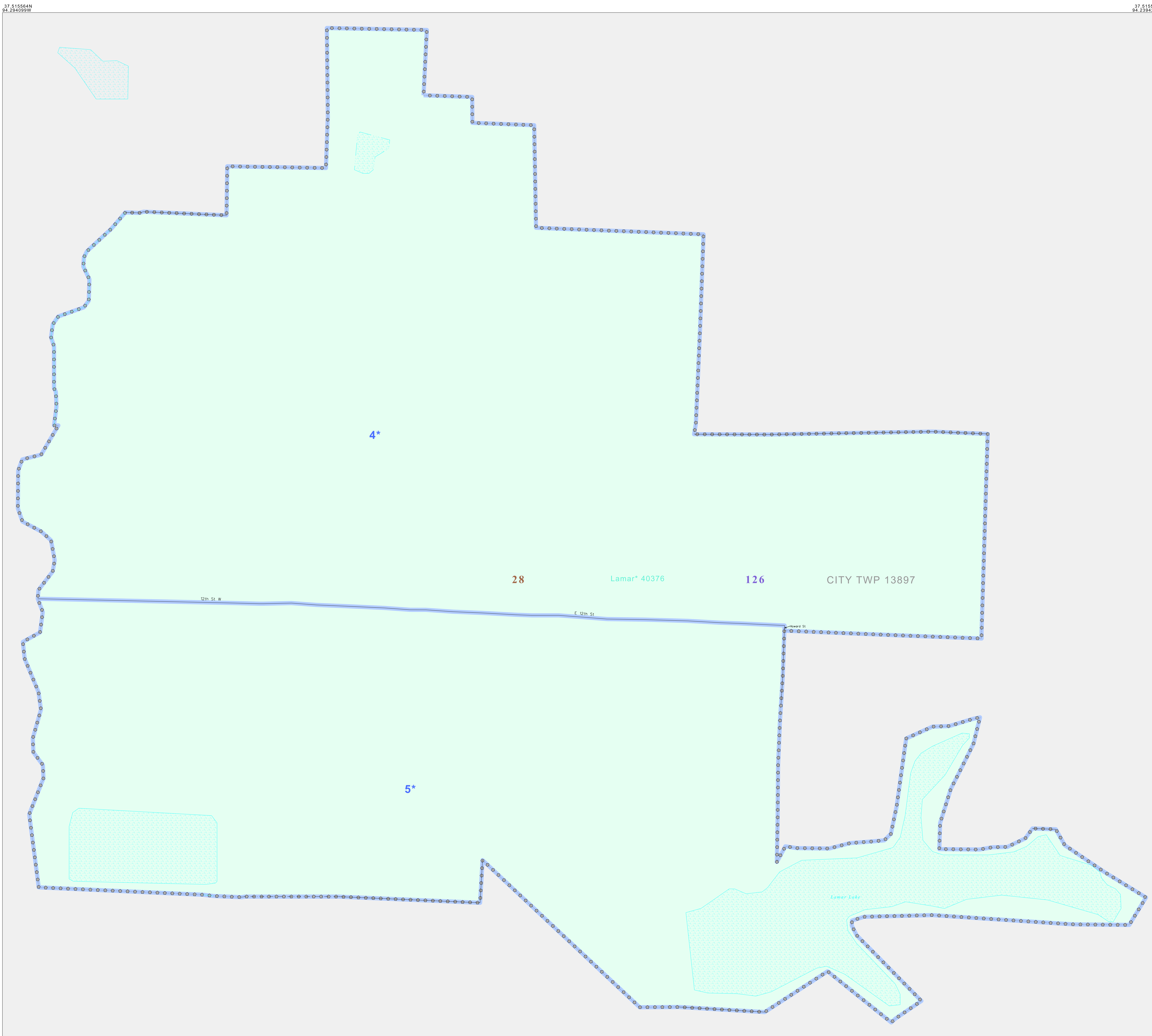
Abbreviation Reference: AIR - American Indian Reservation; SDAISA - State Designated American Indian Statistical Area

¹ A "*" following a place name indicates that the place is coterminous with a MCD. A "-" indicates that the place is also a false MCD. In both cases, the MCD name is shown only when it differs from the place name.

² A "*" following a VTD code indicates an actual voting district. Its absence indicates that the VTD is a pseudo voting district or no information is available as to its status.

Voting Districts

Code	Name
4*	City#162 Voting District
5*	City#364 Voting District



37 477030N 94 294099W

37 515564N 94 239424W

37 477030N 94 294099W

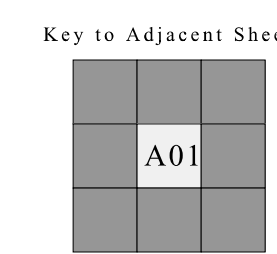
37 515564N 94 239424W

0 1 2 3 4 5 6 mi

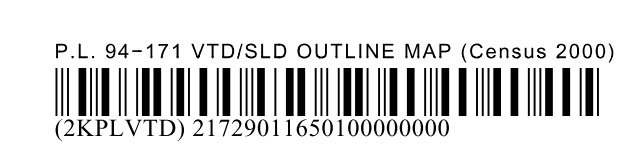
0 1 2 3 4 5 6 km

The plotted map scale is 1:7200

N
W E
S



ST: Missouri (29)
 COU: Barton (011)
 INSET SHEET A01



All legal boundaries and names are as of January 1, 2000. The boundaries shown on this map are for Census Bureau statistical data collection and tabulation purposes only; their depiction and designation for statistical purposes does not constitute a determination of jurisdictional authority or rights of ownership or entitlement. U.S. DEPARTMENT OF COMMERCE Economics and Statistics Administration U.S. Census Bureau