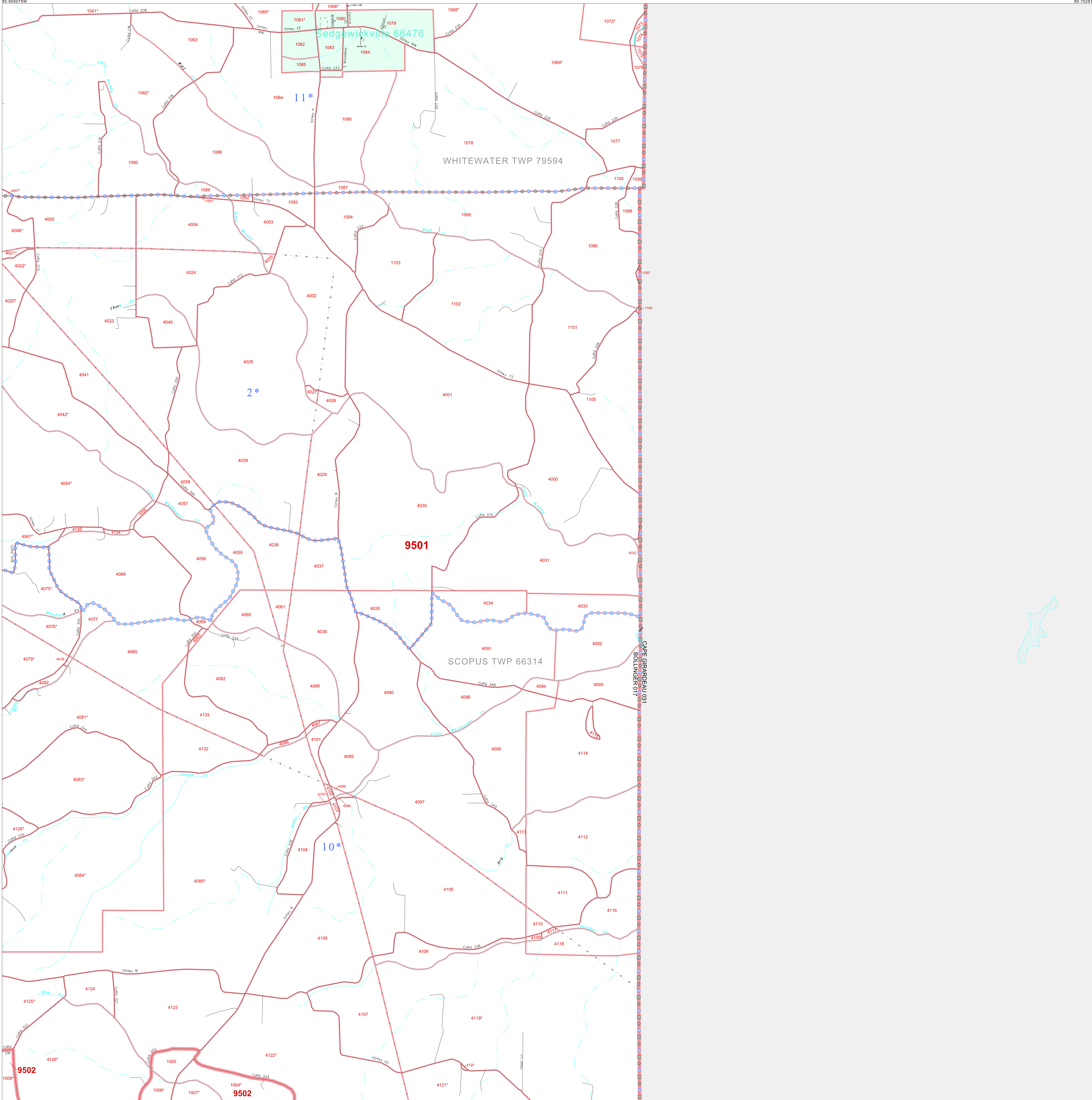


P. L. 94-171 COUNTY BLOCK MAP (CENSUS 2000)

37 518768N  
89.959079W

37 518768N  
89.959079W



**GEOGRAPHIC AREAS LEGEND**

SYMBOL	NAME STYLE
*****	INTERNATIONAL
//////	STATE
■■■■■	COUNTY
■■■■■	MINOR CIVIL DIV. <sup>1</sup>
■■■■■	Incorporated Place <sup>1</sup>
■■■■■	Census Designated Place <sup>1</sup>
.....	Corporate Offset Boundary
.....	Voting District <sup>2</sup>
■■■■■	Census Tract
■■■■■	BLOCK <sup>3</sup>
.....	Military
.....	Inset
.....	Out Area

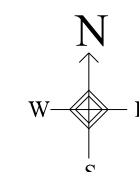
<sup>1</sup> A "\*" following a place name indicates that the place is coterminous with a MCD. A "-" indicates that the place is also a false MCD. In both cases, the MCD name is shown only when it differs from the place name.

<sup>2</sup> A "\*" following a VID code indicates an actual voting district. Its absence indicates that the VID is a pseudo voting district or no information is available as to its status.

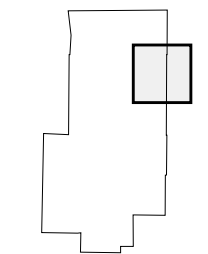
<sup>3</sup> A "\*" following a block number indicates that the block number is repeated elsewhere in the block.

37 389224N  
89.959079W

37 389224N  
89.959079W



Sheet Location within County



Key to Adjacent Sheets

2	3
5	6
8	9

ST: Missouri (29)  
COU: Bollinger (017)  
SHEET 6 OF 14 PARENT SHEETS



All legal boundaries and names are as of January 1, 2000. The boundaries shown on this map are for Census Bureau statistical data collection and tabulation purposes only; their depiction and designation for statistical purposes does not constitute a determination of jurisdictional authority or rights of ownership or entitlement. U.S. DEPARTMENT OF COMMERCE Economics and Statistics Administration U.S. Census Bureau