

P.L. 94-171 VOTING DISTRICT/STATE LEGISLATIVE DISTRICT OUTLINE MAP (CENSUS 2000)

37 638237N
90 241620W

37 638237N
90 042179W

GEOGRAPHIC AREAS LEGEND

SYMBOL	NAME STYLE
*****	INTERNATIONAL
//////	STATE
□□□□□□	COUNTY
○ ○ ○ ○ ○	MINOR CIVIL DIV. ¹
■ ■ ■ ■ ■	Incorporated Place ¹
■ ■ ■ ■ ■	Census Designated Place ²
■ ■ ■ ■ ■	Voting District
● ● ● ● ●	SLD-Senate
▲ ▲ ▲ ▲ ▲	SLD-House
□ □ □ □ □	Minority
□ □ □ □ □	Inset
□ □ □ □ □	Out Area

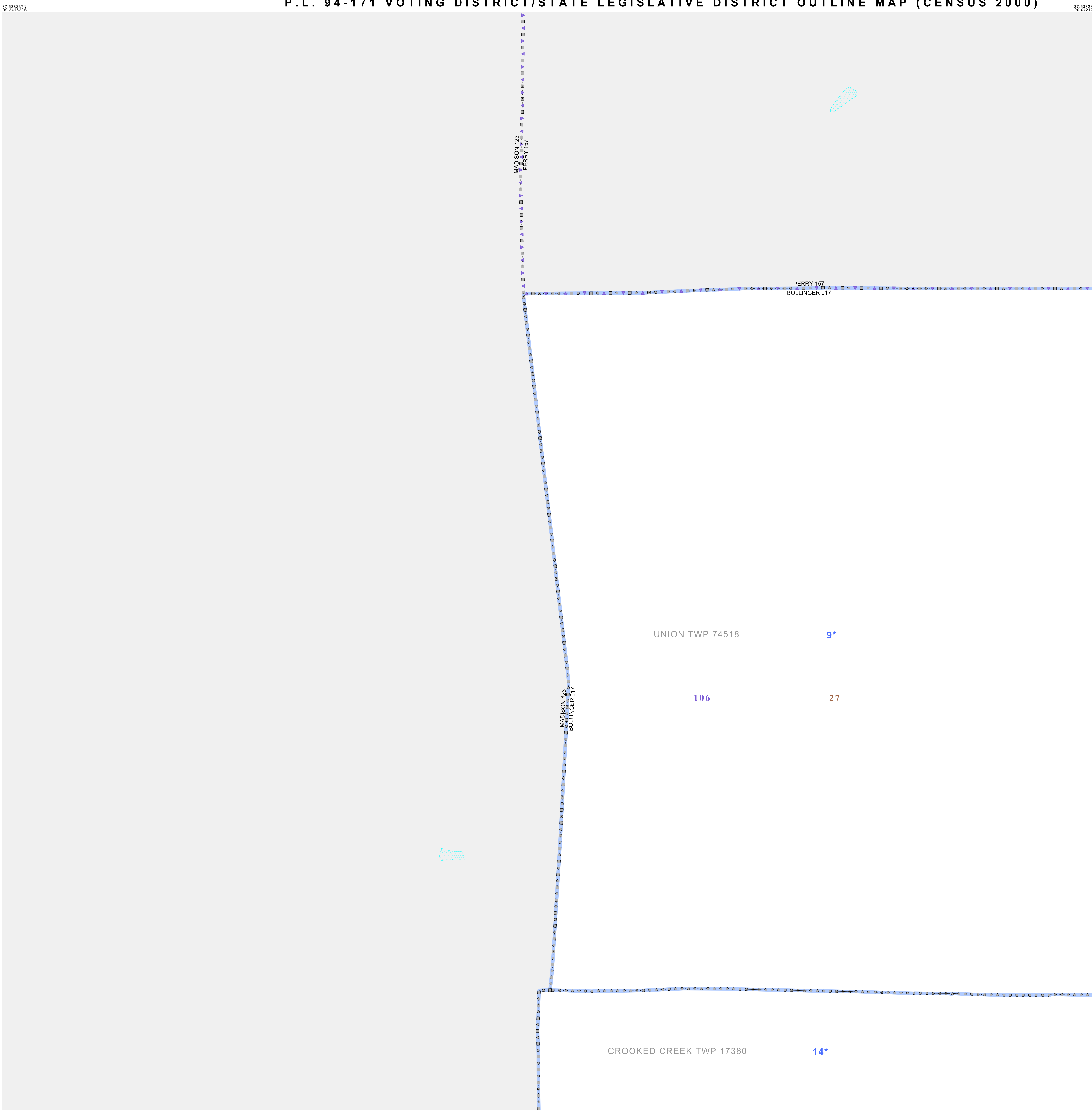
Abbreviation Reference: AIR - American Indian Reservation; SDAISA - State Designated American Indian Statistical Area

¹ A "*" following a place name indicates that the place is coterminous with a MCD. A "-" indicates that the place is also a false MCD. In both cases, the MCD name is shown only when it differs from the place name.

² A "*" following a VTD code indicates an actual voting district. Its absence indicates that the VTD is a pseudo voting district or no information is available as to its status.

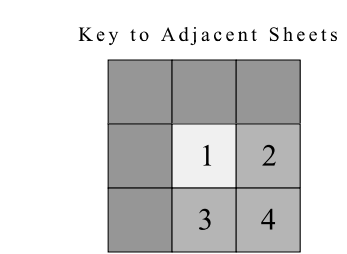
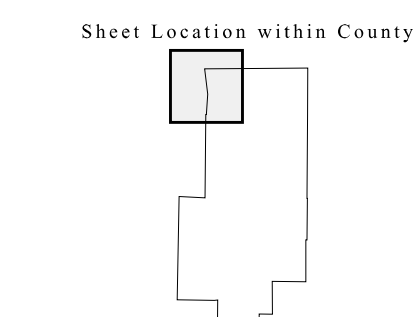
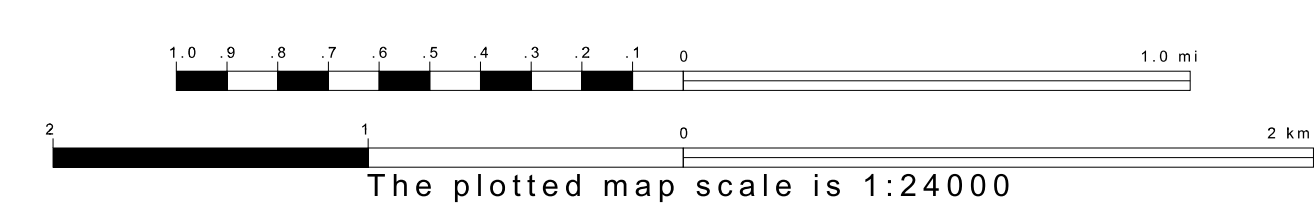
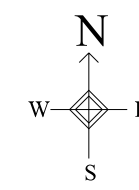
Voting Districts

Code	Name
9*	Patton Voting District
14*	Yount's Store Voting District



37 478045N
90 241620W

37 478045N
90 042179W



ST: Missouri (29)
COU: Bollinger (017)
SHEET 1 OF 8 PARENT SHEETS

