

### GEOGRAPHIC AREAS LEGEND

SYMBOL	NAME STYLE
*****	INTERNATIONAL
//////	STATE
□□□□	COUNTY
○○○○	MINOR CIVIL DIV. <sup>1</sup>
■ ■ ■ ■	Incorporated Place <sup>1</sup>
■ ■ ■ ■	Census Designated Place <sup>2</sup>
▬▬▬▬	Voting District <sup>2</sup>
●●●●	SLD-Senate
▲▲▲▲	SLD-House
□□□□	Minority
□□□□	Inset
□□□□	Out Area

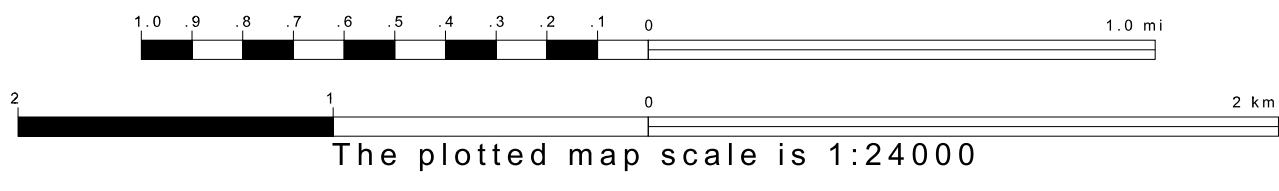
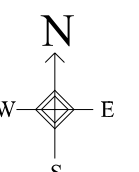
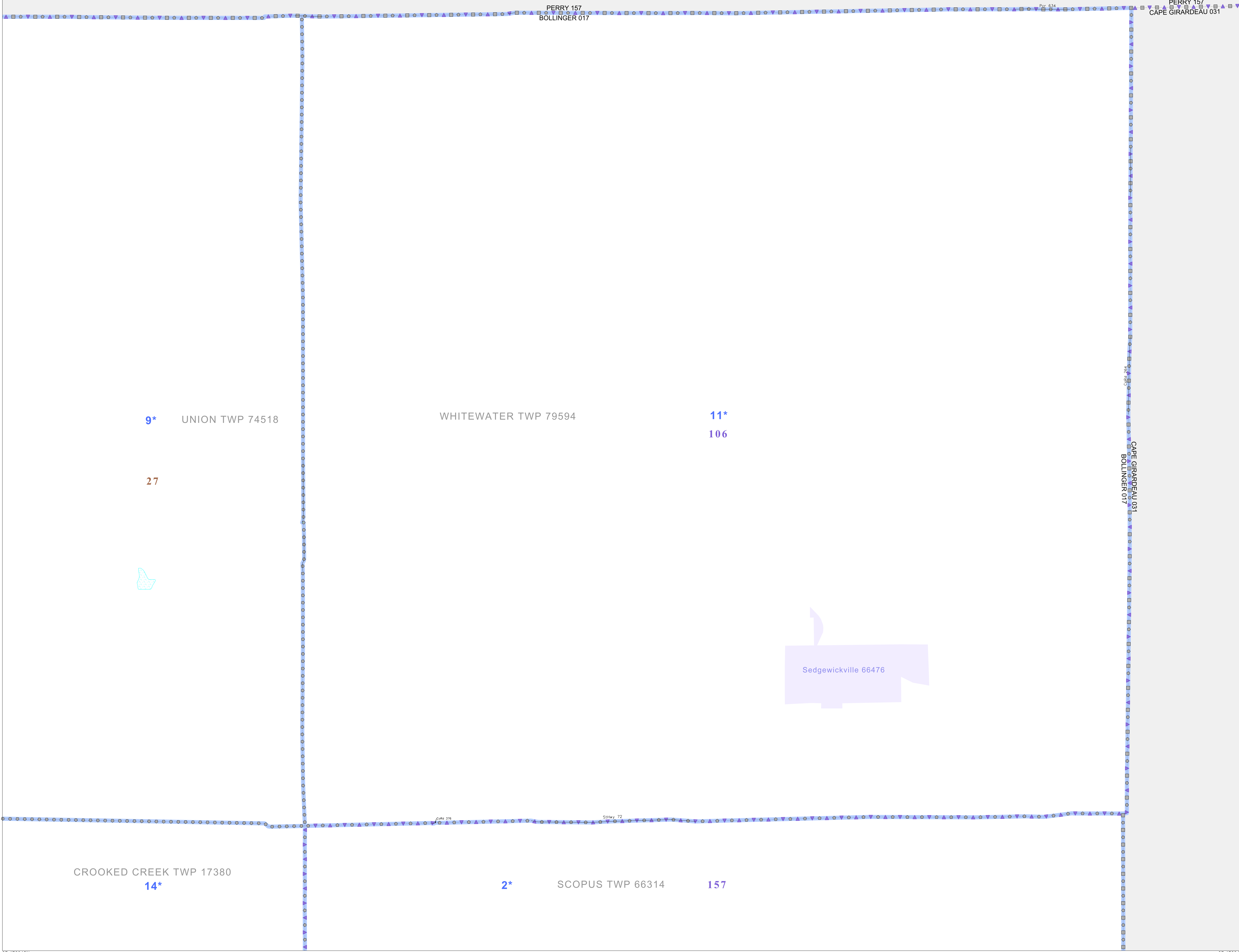
Abbreviation Reference: AIR - American Indian Reservation; SDAISA - State Designated American Indian Statistical Area

<sup>1</sup> A "\*" following a place name indicates that the place is coterminous with a MCD. A "-" indicates that the place is also a false MCD. In both cases, the MCD name is shown only when it differs from the place name.

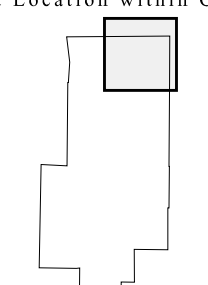
<sup>2</sup> A "\*" following a VTD code indicates an actual voting district. Its absence indicates that the VTD is a pseudo voting district or no information is available as to its status.

### Voting Districts

Code	Name
2*	Bollinger Voting District
9*	Patton Voting District
11*	Sedgewickville Voting District
14*	Younts Shore Voting District



Sheet Location within County



Key to Adjacent Sheets



ST: Missouri (29)  
COU: Bollinger (017)  
SHEET 2 OF 8 PARENT SHEETS

