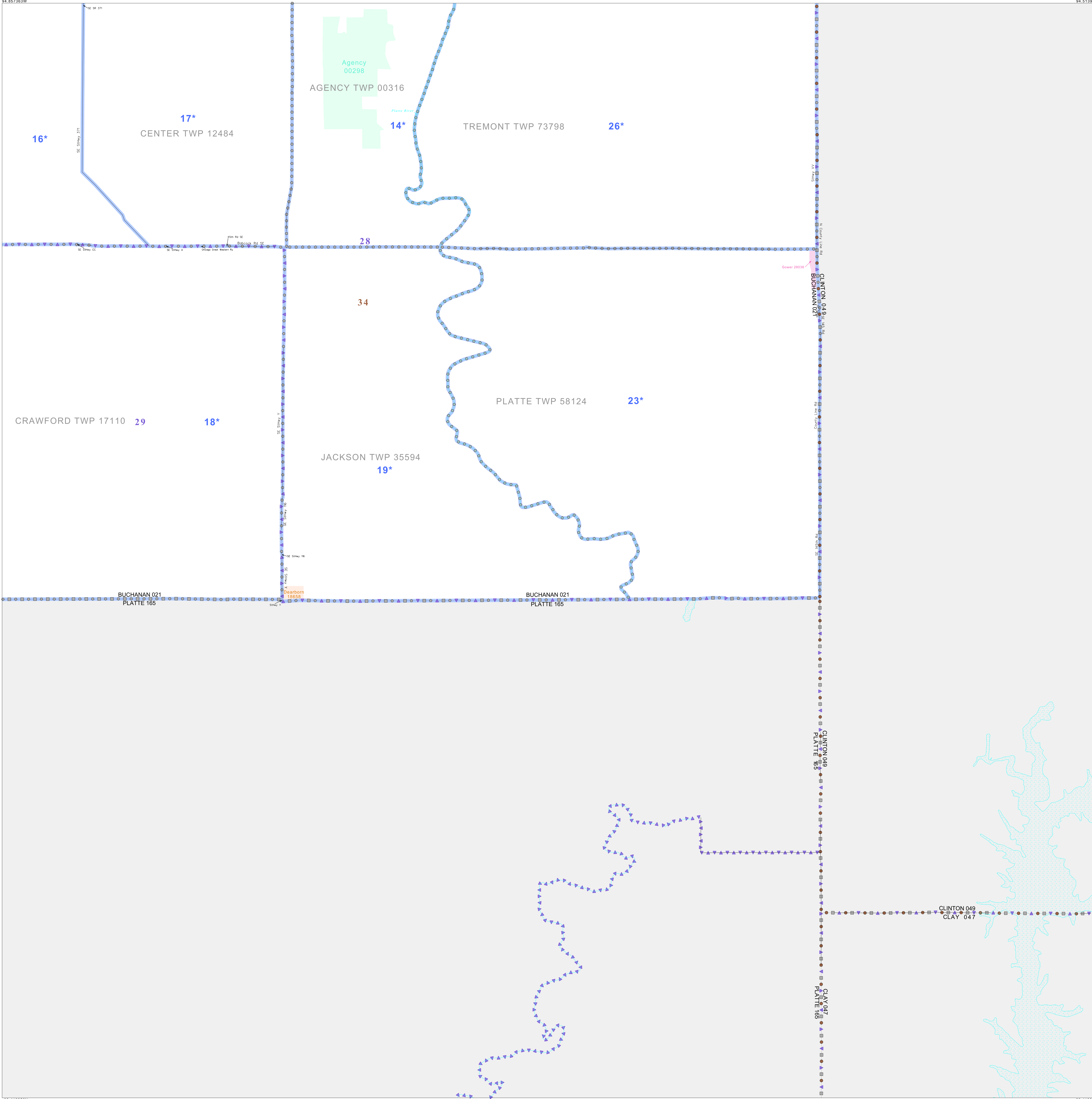


P.L. 94-171 VOTING DISTRICT/STATE LEGISLATIVE DISTRICT OUTLINE MAP (CENSUS 2000)

39 876334N  
94 857365W

39 876334N  
94 857365W



GEOGRAPHIC AREAS LEGEND

| SYMBOL  | NAME STYLE                           |
|---------|--------------------------------------|
| *****   | INTERNATIONAL                        |
| //////  | STATE                                |
| □□□□    | COUNTY                               |
| □□□□    | MINOR CIVIL DIV <sup>1</sup>         |
| ■ ■ ■ ■ | Incorporated Place <sup>1</sup>      |
| ■ ■ ■ ■ | Census Designated Place <sup>2</sup> |
| — — — — | Voting District                      |
| ● ● ● ● | SLD-Senate                           |
| ▲ ▲ ▲ ▲ | SLD-House                            |

Abbreviation Reference: AIR - American Indian Reservation; SDAISA - State Designated American Indian Statistical Area

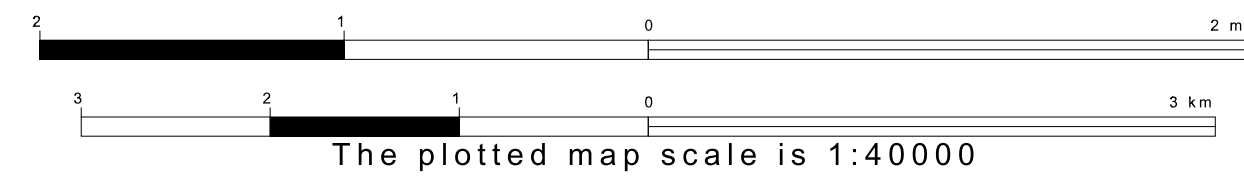
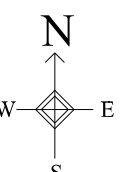
<sup>1</sup> A "\*" following a place name indicates that the place is coterminous with a MCD. A "-" indicates that the place is also a MCD. In both cases, the MCD name is shown only when it differs from the place name.  
<sup>2</sup> A "\*" following a VTD code indicates an actual voting district. Its absence indicates that the VTD is a pseudo voting district or no information is available as to its status.

Voting Districts

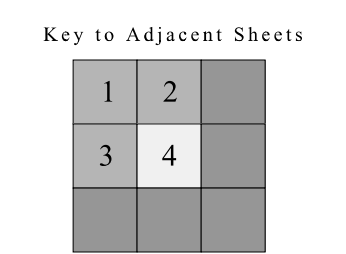
| Code | Name                |
|------|---------------------|
| 14*  | Voting District 16A |
| 16*  | Voting District 16C |
| 17*  | Voting District 16D |
| 18*  | Voting District 16E |
| 19*  | Voting District 16F |
| 23*  | Voting District 16J |
| 26*  | Voting District 16M |

39 410956N  
94 857365W

39 410956N  
94 513951W



Sheet Location within County



ST: Missouri (29)  
 COU: Buchanan (021)  
 SHEET 4 OF 4 PARENT SHEETS

