

P. L. 94-171 COUNTY BLOCK MAP (CENSUS 2000)

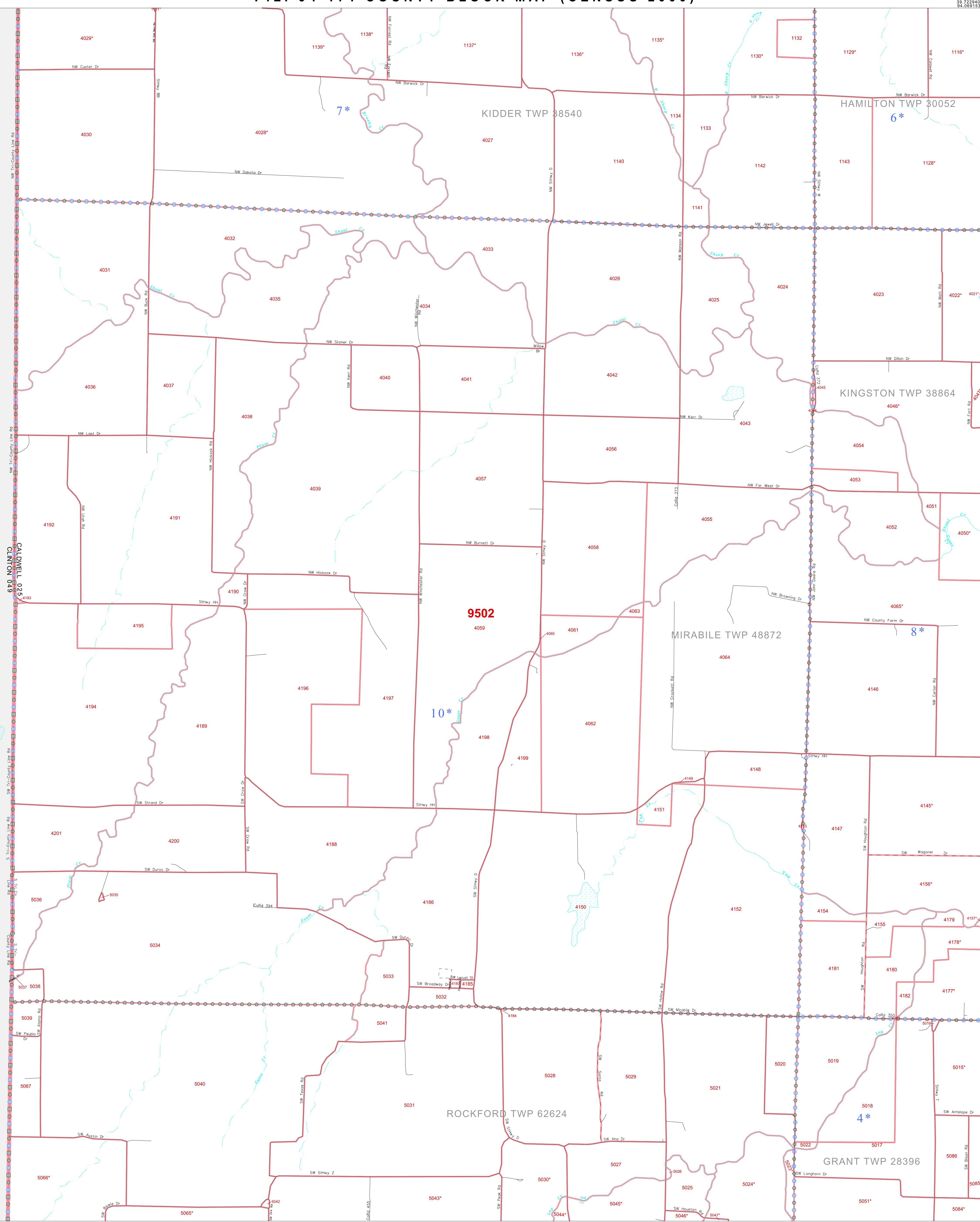
39 722940N
94 245810W

39 722940N
94 245810W

GEOGRAPHIC AREAS LEGEND

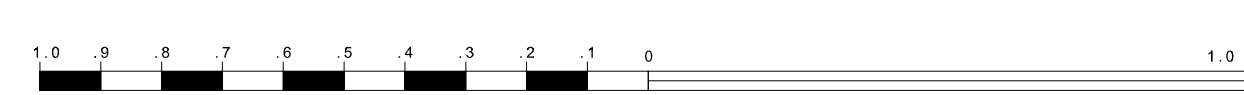
SYMBOL	NAME STYLE
*****	INTERNATIONAL
//////	STATE
■■■■■	COUNTY
■■■■■	MINOR CIVIL DIV. ¹
■■■■■	Incorporated Place ²
■■■■■	Census Designated Place ²
.....	Corporate Offset Boundary
.....	Voting District ³
.....	Census Tract
.....	BLOCK ³
.....	Military

1 A "*" following a place name indicates that the place is coterminous with a MCD. A "-" indicates that the place is also a false MCD. In both cases, the MCD name is shown only when it differs from the place name.
 2 A "*" following a VTD code indicates an actual voting district. Its absence indicates that the VTD is a pseudo voting district or no information is available as to its status.
 3 A "*" following a block number indicates that the block number is repeated elsewhere in the block.



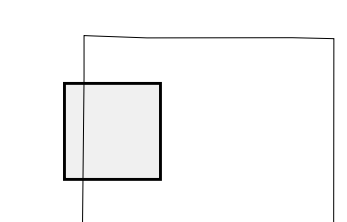
39 590250N
94 245810W

39 590250N
94 245810W



The plotted map scale is 1:20000

Sheet Location within County



Key to Adjacent Sheets

1	2
4	5
7	8

ST: Missouri (29)
 COU: Caldwell (025)
 SHEET 4 OF 9 PARENT SHEETS

