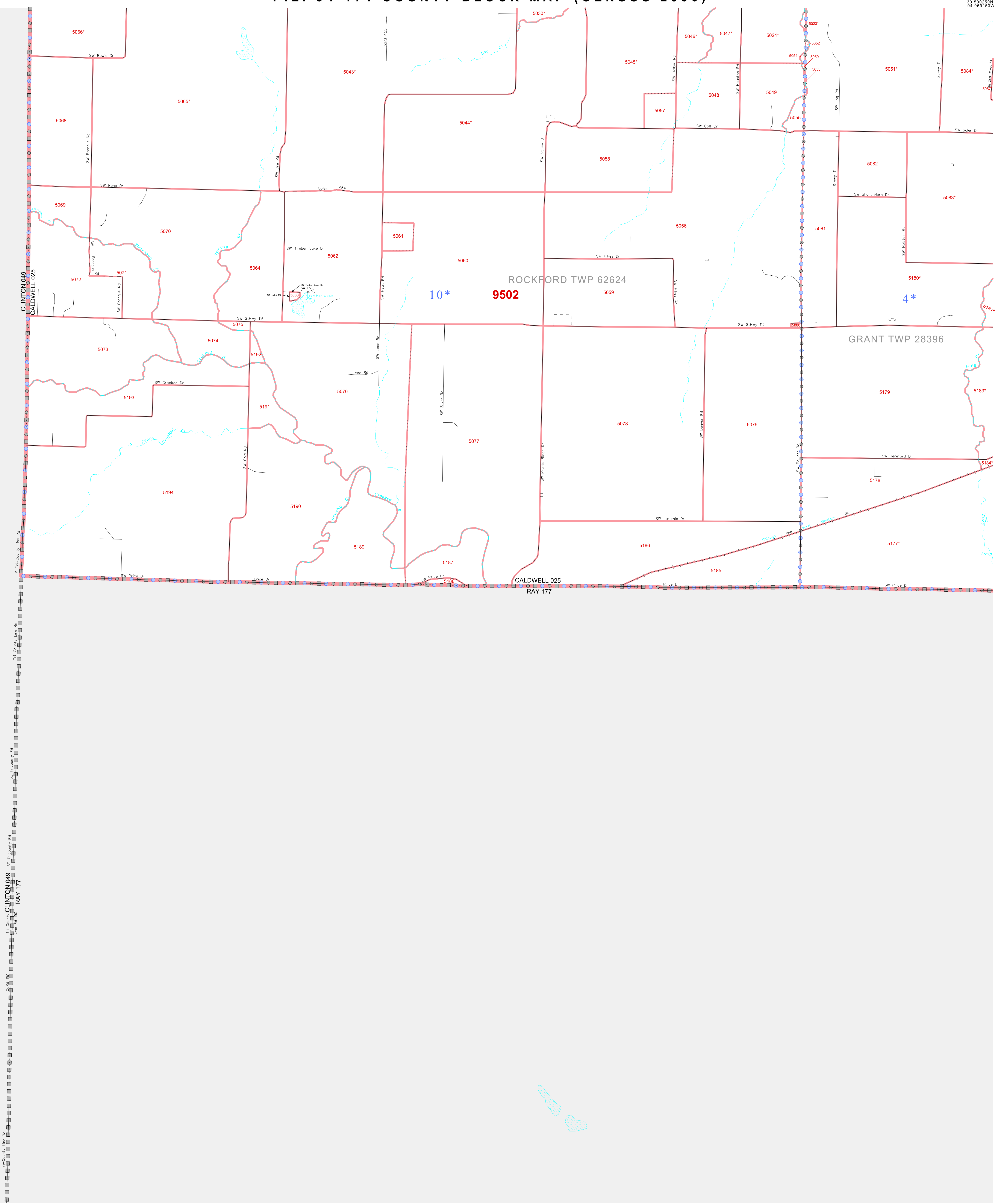


P. L. 94-171 COUNTY BLOCK MAP (CENSUS 2000)

39 590250N
94 245810W

39 590250N
94 069153W



GEOGRAPHIC AREAS LEGEND

SYMBOL	NAME STYLE
☆ ☆ ☆ ☆ ☆	INTERNATIONAL
▬ ▬ ▬ ▬ ▬	STATE
■ ■ ■ ■ ■	COUNTY
□ □ □ □ □	MINOR CIVIL DIV. ¹
■ ■ ■ ■ ■	Incorporated Place ¹
■ ■ ■ ■ ■	Census Designated Place ¹
⋯ ⋯ ⋯	Corporate Offset Boundary
● ● ● ● ●	Voting District ²
▬ ▬ ▬ ▬ ▬	Census Tract
▬ ▬ ▬ ▬ ▬	BLOCK ³
■ ■ ■ ■ ■	Military

Inset Out Area

¹ A "*" following a place name indicates that the place is coterminous with a MCD. A "-" indicates that the place is also a false MCD. In both cases, the MCD name is shown only when it differs from the place name.

² A "*" following a VTD code indicates an actual voting district. Its absence indicates that the VTD is a pseudo voting district or no information is available as to its status.

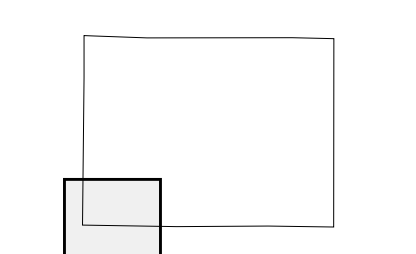
³ A "*" following a block number indicates that the block number is repeated elsewhere in the block.

39 457561N
94 245810W

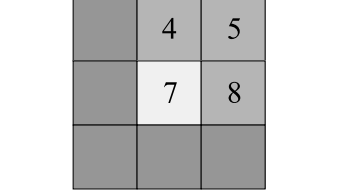
39 457561N
94 069153W



Sheet Location within County



Key to Adjacent Sheets



ST: Missouri (29)
COU: Caldwell (025)
SHEET 7 OF 9 PARENT SHEETS



All legal boundaries and names are as of January 1, 2000. The boundaries shown on this map are for Census Bureau statistical data collection and tabulation purposes only; their depiction and designation for statistical purposes does not constitute a determination of jurisdictional authority or rights of ownership or entitlement. U.S. DEPARTMENT OF COMMERCE Economics and Statistics Administration U.S. Census Bureau