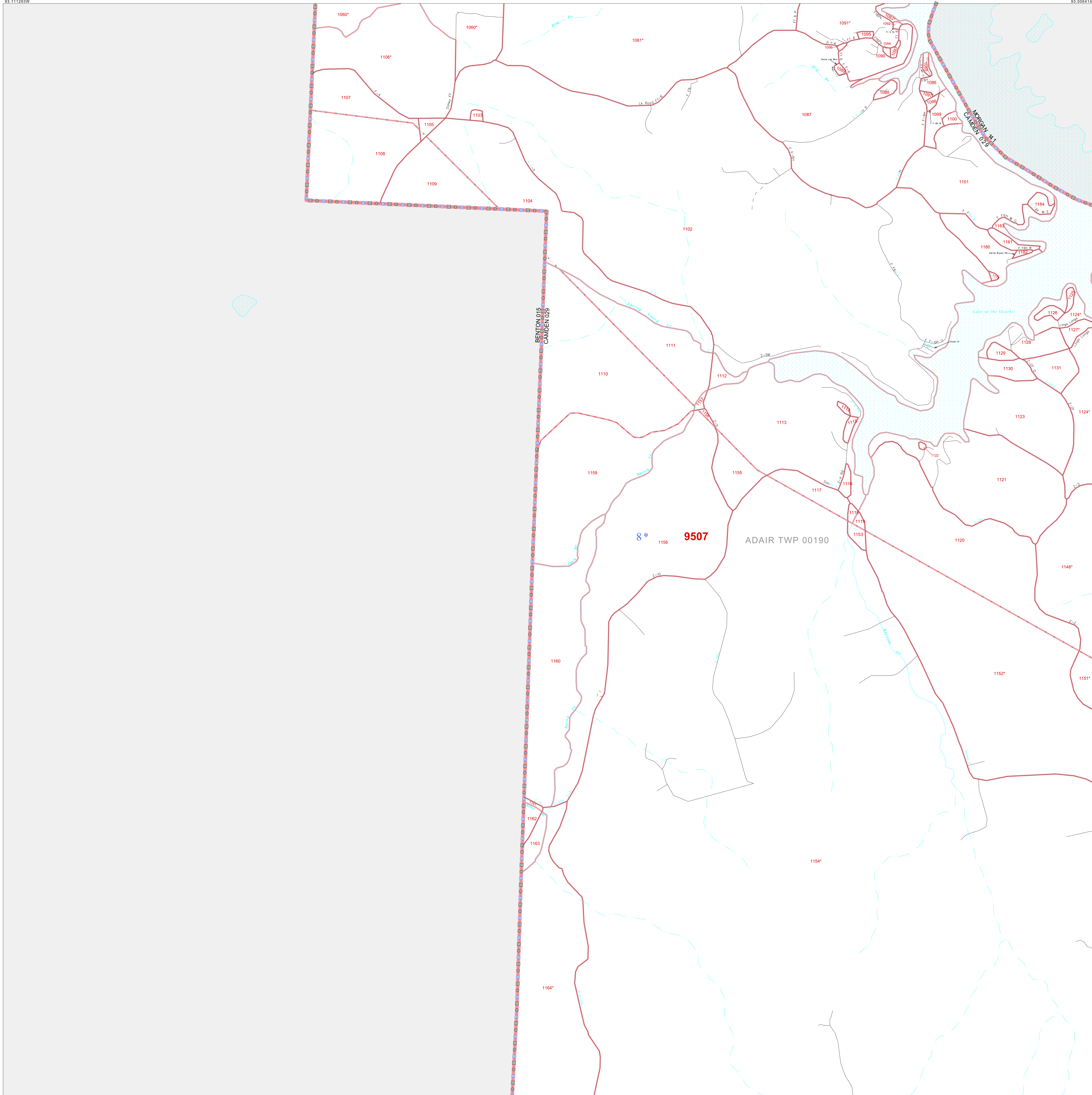


P. L. 94-171 COUNTY BLOCK MAP (CENSUS 2000)

38.201436N
93.111293W

38.201436N
93.008414W



GEOGRAPHIC AREAS LEGEND

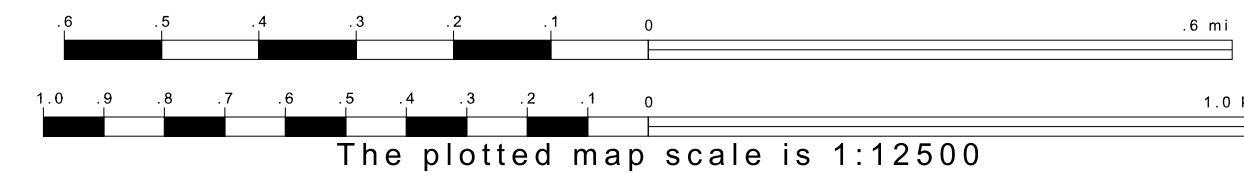
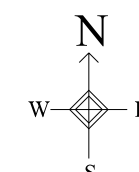
SYMBOL	NAME STYLE
☆☆☆☆	INTERNATIONAL
//////	STATE
□□□□	COUNTY
□□□□	MINOR CIVIL DIV ¹
■ ■ ■ ■	Incorporated Place ²
■ ■ ■ ■	Census Designated Place ²
.....	Corporate Offset Boundary
.....	Voting District ³
.....	Census Tract
.....	BLOCK ³
.....	Military

1 A "*" following a place name indicates that the place is coterminous with a MCD. A "-" indicates that the place is also a false MCD. In both cases, the MCD name is shown only when it differs from the place name.
 2 A "*" following a VTD code indicates an actual voting district. Its absence indicates that the VTD is a pseudo voting district or no information is available as to its status.
 3 A "*" following a block number indicates that the block number is repeated elsewhere in the block.

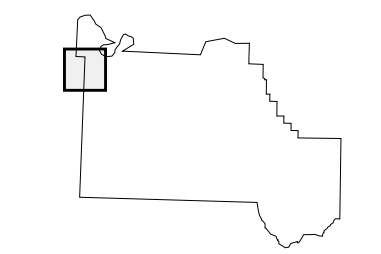
Inset Out Area

38.118482N
93.111293W

38.118482N
93.008414W



Sheet Location within County



Key to Adjacent Sheets

1	2
5	6
10	11

ST: Missouri (29)
 COU: Camden (029)
 SHEET 5 OF 32 PARENT SHEETS

