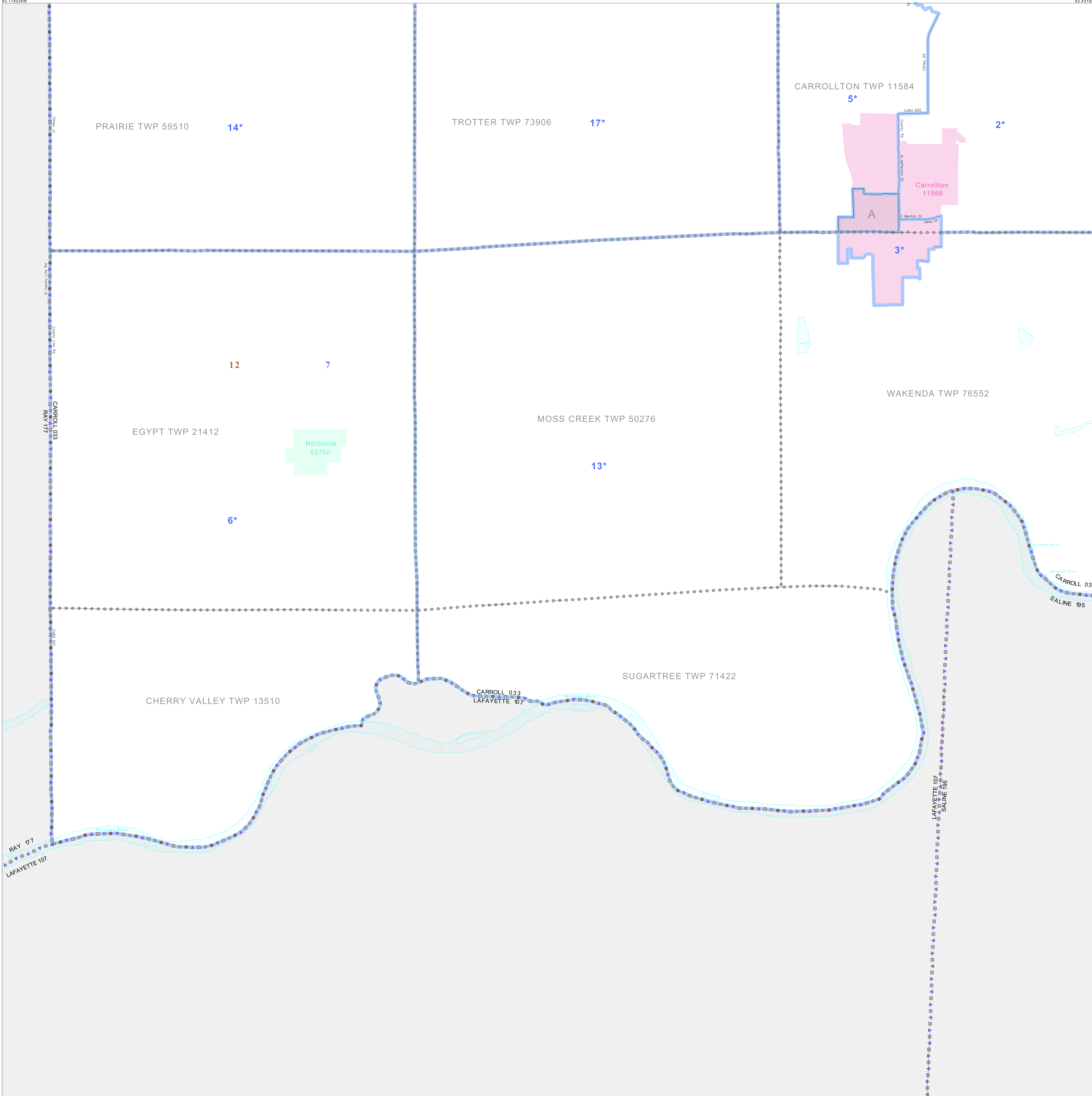


P.L. 94-171 VOTING DISTRICT/STATE LEGISLATIVE DISTRICT OUTLINE MAP (CENSUS 2000)

39.410972N
93.774034W

39.410972N
93.431927W



GEOGRAPHIC AREAS LEGEND

SYMBOL	NAME STYLE
*****	INTERNATIONAL
//////	STATE
□□□□□□	COUNTY
○ ○ ○ ○ ○ ○	MINOR CIVIL DIV ¹
■ ■ ■ ■ ■ ■	Incorporated Place ¹
■ ■ ■ ■ ■ ■	Census Designated Place ²
—	Voting District
● ● ● ● ● ●	SLD-Senate
▲ ▲ ▲ ▲ ▲ ▲	SLD-House

Abbreviation Reference: AIR - American Indian Reservation; SDAISA - State Designated American Indian Statistical Area

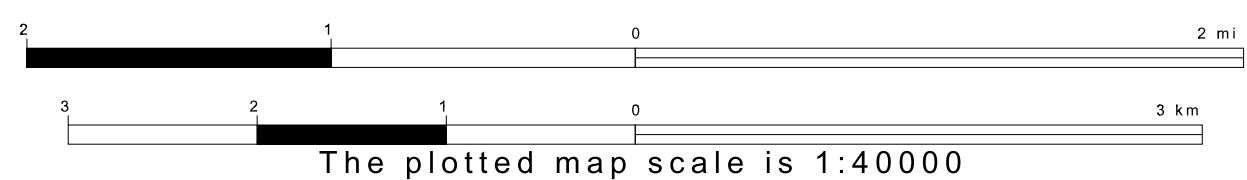
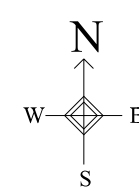
¹ A "*" following a place name indicates that the place is coterminous with a MCD. "A" indicates that the place is also a MCD. In both cases, the MCD name is shown only when it differs from the place name.
² A "*" following a VTD code indicates an actual voting district. Its absence indicates that the VTD is a pseudo voting district or no information is available as to its status.

Voting Districts

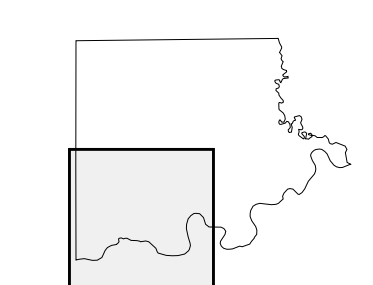
Code	Name
2*	CarrolltonWard1
3*	CarrolltonWard2
5*	CarrolltonWard3
6*	CherryValley/Egypt Voting District
12	Missouri/Bankside Voting District
13*	Prairie Voting District
17*	Sugartree/Trotter Voting District

39.145582N
93.774034W

39.145582N
93.431927W



Sheet Location within County



Key to Adjacent Sheets

1	2
3	4

ST: Missouri (29)
 COU: Carroll (033)
 SHEET 3 OF 4 PARENT SHEETS

