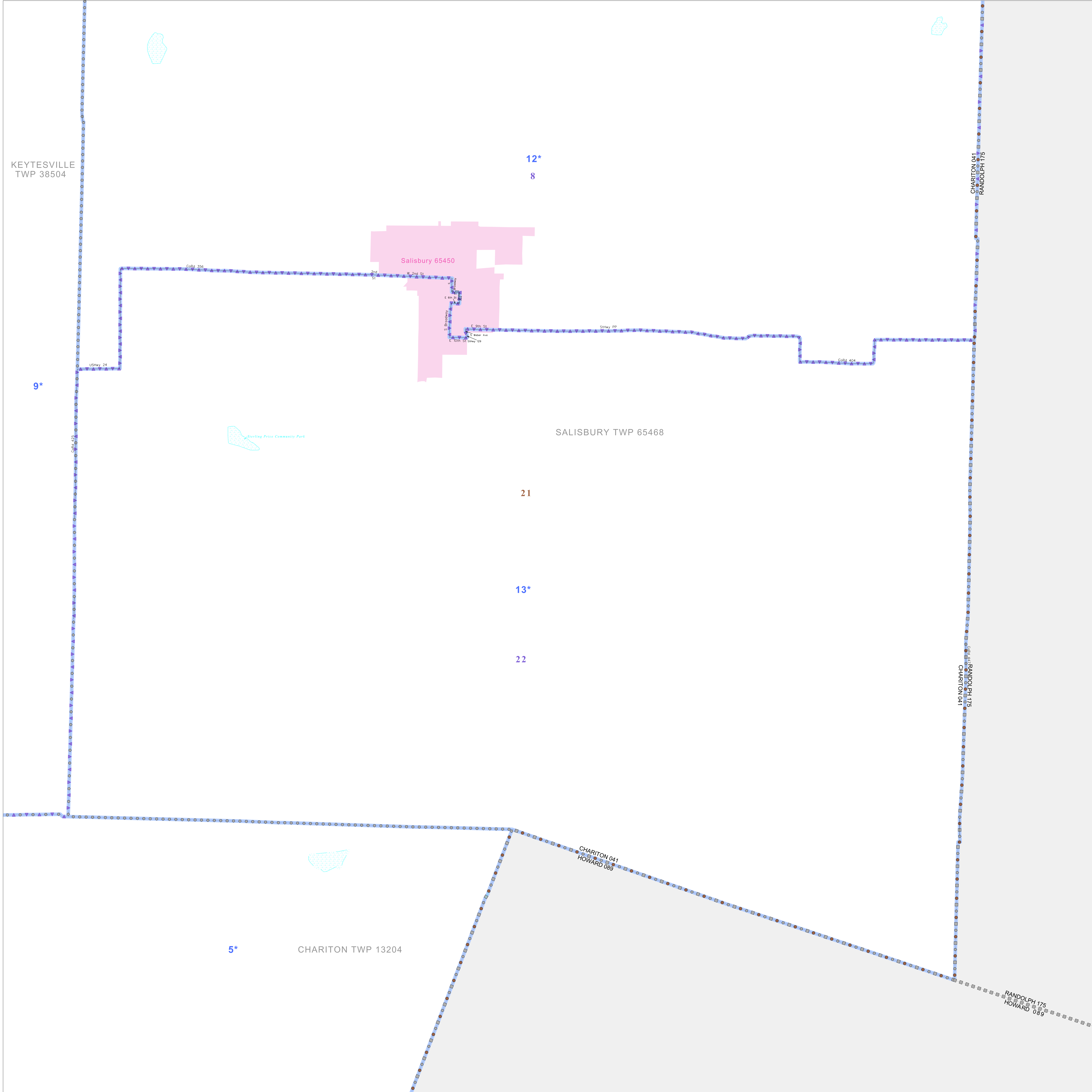


39 464326N
92 865911W

39 464326N
92 864907W



GEOGRAPHIC AREAS LEGEND

SYMBOL	NAME STYLE
*****	INTERNATIONAL
//////	STATE
□□□□	COUNTY
○●○●	MINOR CIVIL DIV ¹
■	Incorporated Place ¹
■	Census Designated Place ²
—	Voting District
●●●●	SLD-Senate
▲▲▲▲	SLD-House
□	Minority
□	Inset
□	Out Area

Abbreviation Reference: AIR - American Indian Reservation; SDAISA - State Designated American Indian Statistical Area

¹ A "*" following a place name indicates that the place is coterminous with a MCD. A "-" indicates that the place is also a MCD. In both cases, the MCD name is shown only when it differs from the place name.

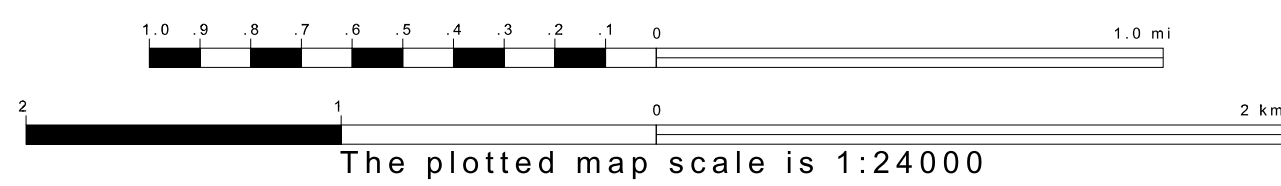
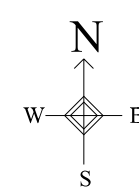
² A "*" following a VTD code indicates an actual voting district. Its absence indicates that the VTD is a pseudo voting district or no information is available as to its status.

Voting Districts

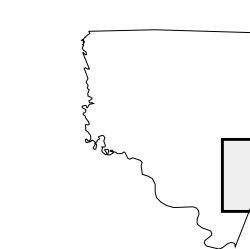
Code	Name
5*	Chariton Voting District
9*	Keytesville Voting District
13*	Salisbury Precinct
13*	Salisbury Precinct2

39 305093N
92 865911W

39 305093N
92 864907W



Sheet Location within County



Key to Adjacent Sheets

5	6
8	9
10	11

ST: Missouri (29)
COU: Chariton (041)
SHEET 9 OF 11 PARENT SHEETS

