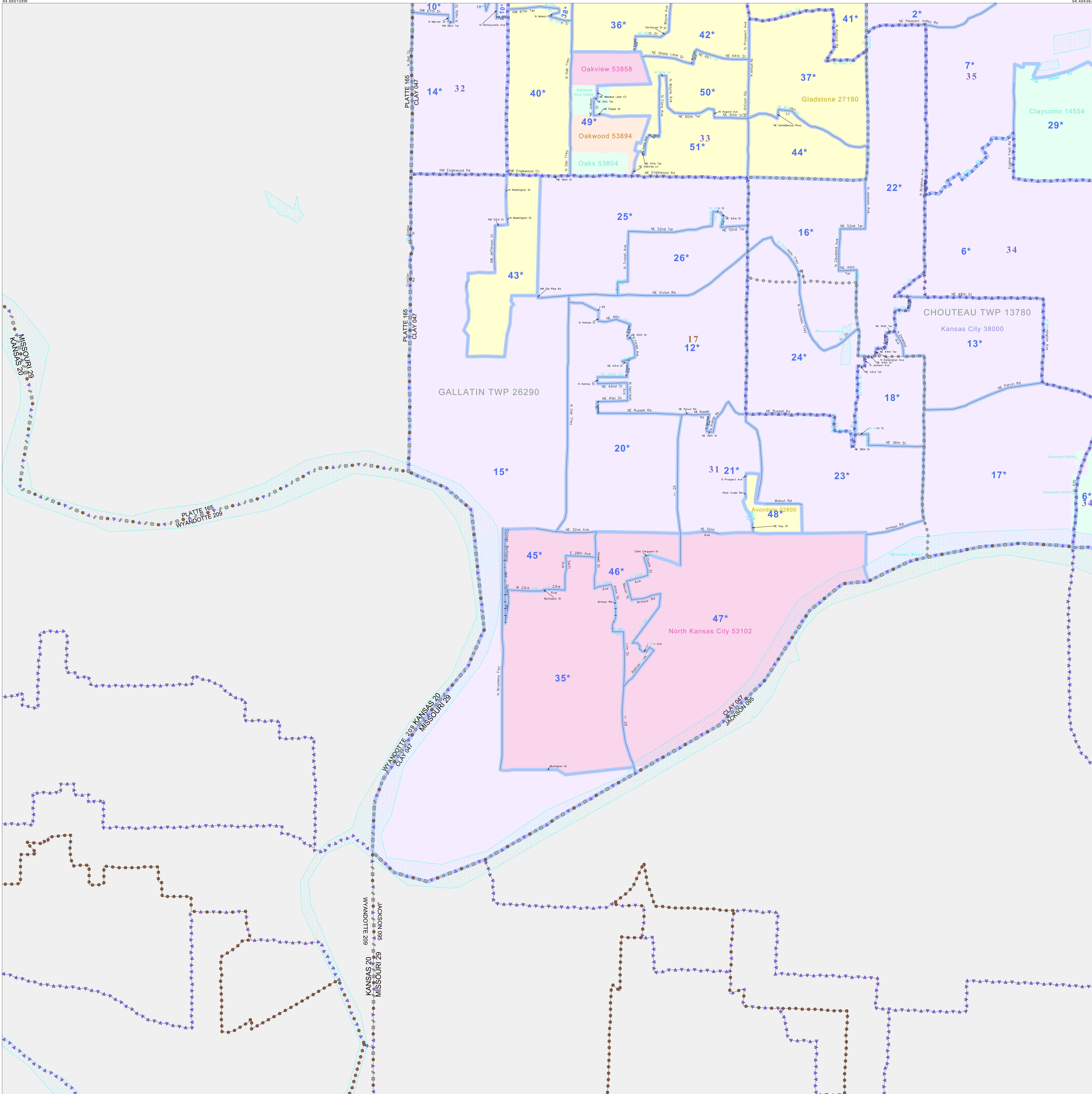


P.L. 94-171 VOTING DISTRICT/STATE LEGISLATIVE DISTRICT OUTLINE MAP (CENSUS 2000)

39 218521N
94 665109W

39 218523N
94 694367W



GEOGRAPHIC AREAS LEGEND

SYMBOL	NAME STYLE
*****	INTERNATIONAL
=====	STATE
=====	COUNTY
=====	MINOR CIVIL DIV ¹
=====	Incorporated Place ¹
=====	Census Designated Place ²
=====	Voting District
=====	SLD-Senate
=====	SLD-House

Abbreviation Reference: AIR - American Indian Reservation; SDAISA - State Designated American Indian Statistical Area

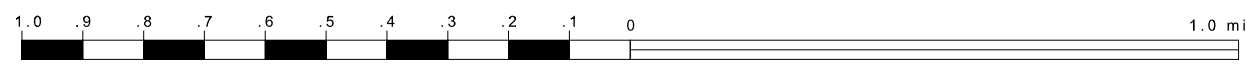
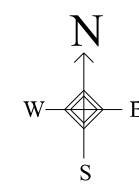
¹ A "*" following a place name indicates that the place is coterminous with a MCD. A "*" indicates that the place is also a false MCD. In both cases, the MCD name is shown only when it differs from the place name.
² A "*" following a VTD code indicates an actual voting district. Its absence indicates that the VTD is a pseudo voting district or no information is available as to its status.

Voting Districts

Code	Name
2*	Voting District 21Chouteau12
5*	Voting District 21Chouteau18
7*	Voting District 21Chouteau19
10*	Voting District 21Ballwin1
11*	Voting District 21Ballwin11
13*	Voting District 21Ballwin14
14*	Voting District 21Ballwin15
15*	Voting District 21Ballwin2
16*	Voting District 21Ballwin20
17*	Voting District 21Ballwin25
18*	Voting District 21Ballwin24
20*	Voting District 21Ballwin26
21*	Voting District 21Ballwin4
22*	Voting District 21Ballwin5
23*	Voting District 21Ballwin6
24*	Voting District 21Ballwin7
25*	Voting District 21Ballwin8
26*	Voting District 21Ballwin9
28*	Chouteau8 Voting District
35*	Gallatin1 Voting District
36*	Gallatin11 Voting District
37*	Gallatin12 Voting District
38*	Gallatin14 Voting District
40*	Gallatin15 Voting District
41*	Gallatin16 Voting District
42*	Gallatin17 Voting District
43*	Gallatin18 Voting District
44*	Gallatin2 Voting District
45*	Gallatin3 Voting District
46*	Gallatin4 Voting District
48*	Gallatin5 Voting District
49*	Gallatin6 Voting District
50*	Gallatin7 Voting District
51*	Gallatin8 Voting District

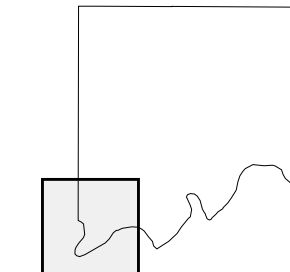
39 083823N
94 665109W

39 083823N
94 694367W



The plotted map scale is 1:20000

Sheet Location within County



Key to Adjacent Sheets

4	5
7	8

ST: Missouri (29)
 COU: Clay (047)
 SHEET 7 OF 9 PARENT SHEETS

