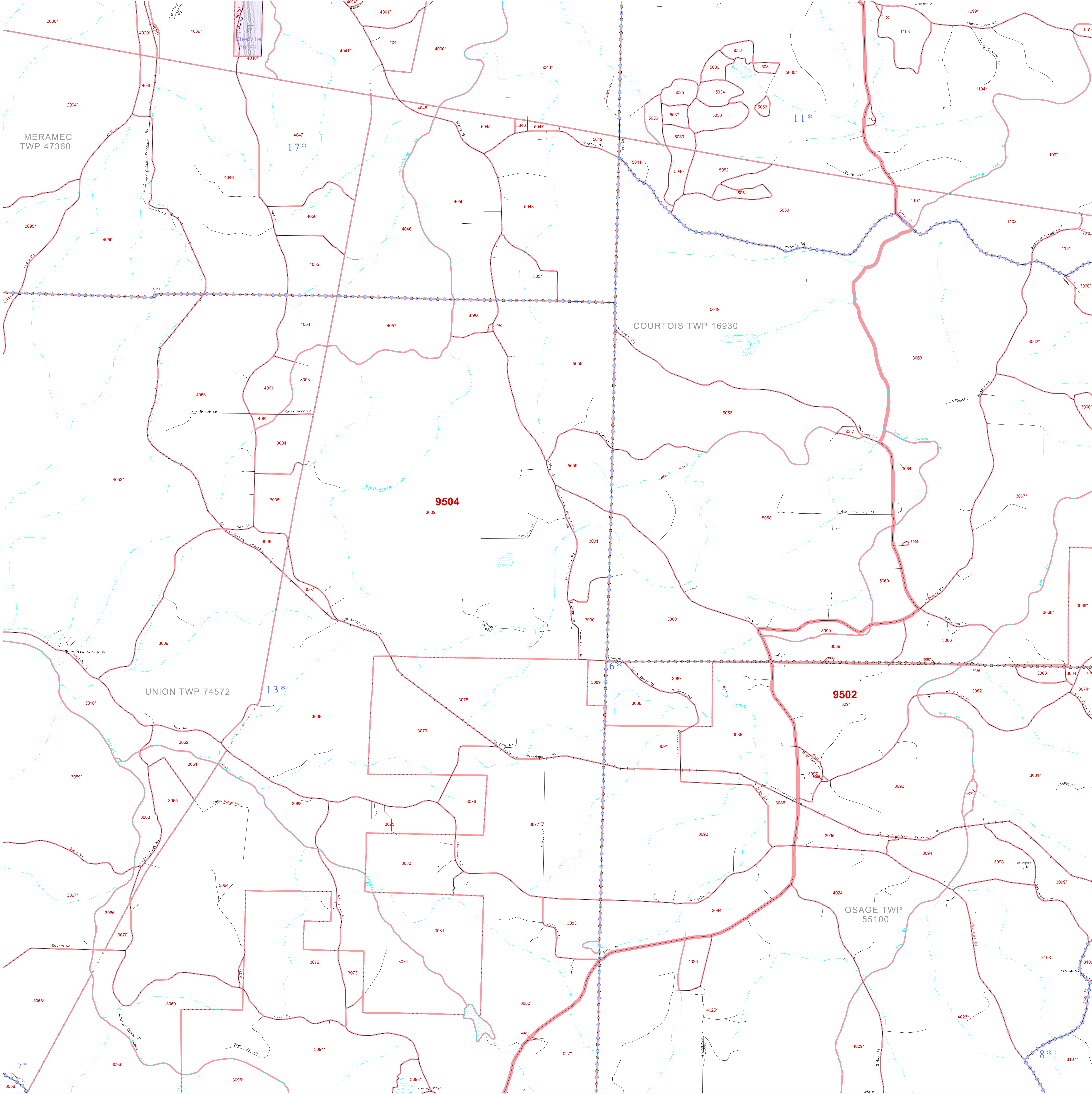


P.L. 94-171 COUNTY BLOCK MAP (CENSUS 2000)

37 954419N  
91 398448W

37 954419N  
91 398448W



**GEOGRAPHIC AREAS LEGEND**

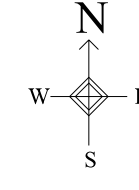
SYMBOL	NAME STYLE
☆ ☆ ☆ ☆ ☆	INTERNATIONAL
▬ ▬ ▬ ▬ ▬	STATE
▬ ▬ ▬ ▬ ▬	COUNTY
▬ ▬ ▬ ▬ ▬	MINOR CIVIL DIV. <sup>1</sup>
Yellow box	Incorporated Place <sup>2</sup>
Light yellow box	Census Designated Place <sup>2</sup>
Dashed line	Corporate Offset Boundary
Blue star	Voting District <sup>3</sup>
Red line	Census Tract
Blue dashed line	BLOCK <sup>3</sup>

Military  Inset  Out Area

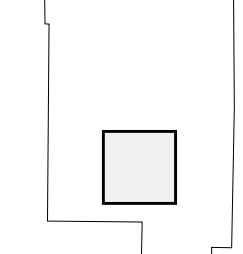
1 A "\*" following a place name indicates that the place is coterminous with a MCD. A "-" indicates that the place is also a false MCD. In both cases, the MCD name is shown only when it differs from the place name.  
 2 A "\*" following a VTD code indicates an actual voting district. Its absence indicates that the VTD is a pseudo voting district or no information is available as to its status.  
 3 A "-" following a block number indicates that the block number is repeated elsewhere in the block.

37 821690N  
91 398448W

37 821690N  
91 398448W



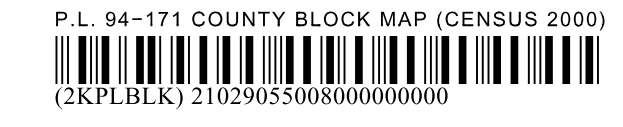
Sheet Location within County



Key to Adjacent Sheets

4	5	6
7	8	9
10	11	12

ST: Missouri (29)  
 COU: Crawford (055)  
 SHEET 8 OF 12 PARENT SHEETS



All legal boundaries and names are as of January 1, 2000. The boundaries shown on this map are for Census Bureau statistical data collection and tabulation purposes only; their depiction and designation for statistical purposes does not constitute a determination of jurisdictional authority or rights of ownership or entitlement. U.S. DEPARTMENT OF COMMERCE Economics and Statistics Administration U.S. Census Bureau