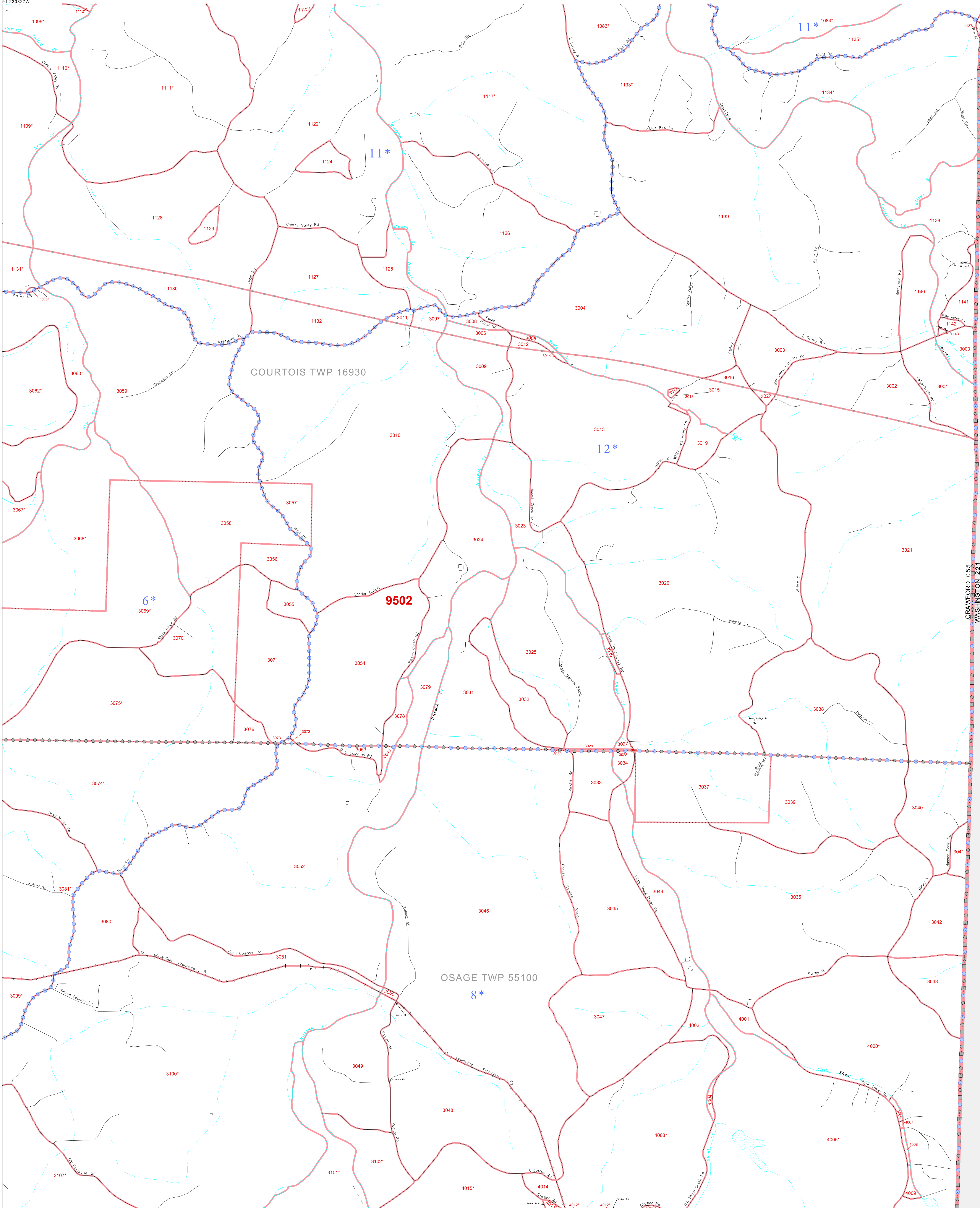


P. L. 94-171 COUNTY BLOCK MAP (CENSUS 2000)

37 954419N
91.230827W

37 954419N
91.063207W



GEOGRAPHIC AREAS LEGEND

SYMBOL	NAME STYLE
*****	INTERNATIONAL
//////	STATE
■■■■■	COUNTY
□□□□□	MINOR CIVIL DIV. ¹
Yellow box	Incorporated Place ¹
Light yellow box	Census Designated Place ¹
.....	Corporate Offset Boundary
.....	Voting District ²
Red outline	Census Tract ³
Red outline	BLOCK ³

1 A "*" following a place name indicates that the place is coterminous with a MCD. A "-" indicates that the place is also a false MCD. In both cases, the MCD name is shown only when it differs from the place name.

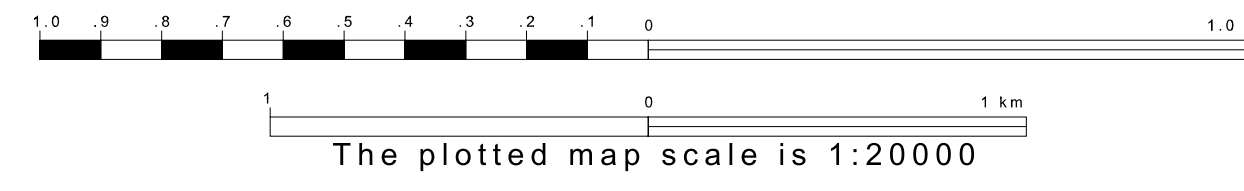
2 A "*" following a VTD code indicates an actual voting district. Its absence indicates that the VTD is a pseudo voting district or no information is available as to its status.

3 A "*" following a block number indicates that the block number is repeated elsewhere in the block.

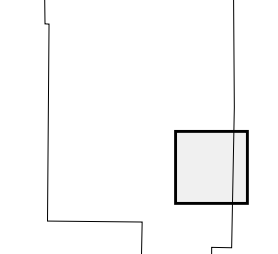
Military Inset Out Area

37 821690N
91.230827W

37 821690N
91.063207W



Sheet Location within County



Key to Adjacent Sheets

5	6
8	9
11	12

ST: Missouri (29)
COU: Crawford (055)
SHEET 9 OF 12 PARENT SHEETS

