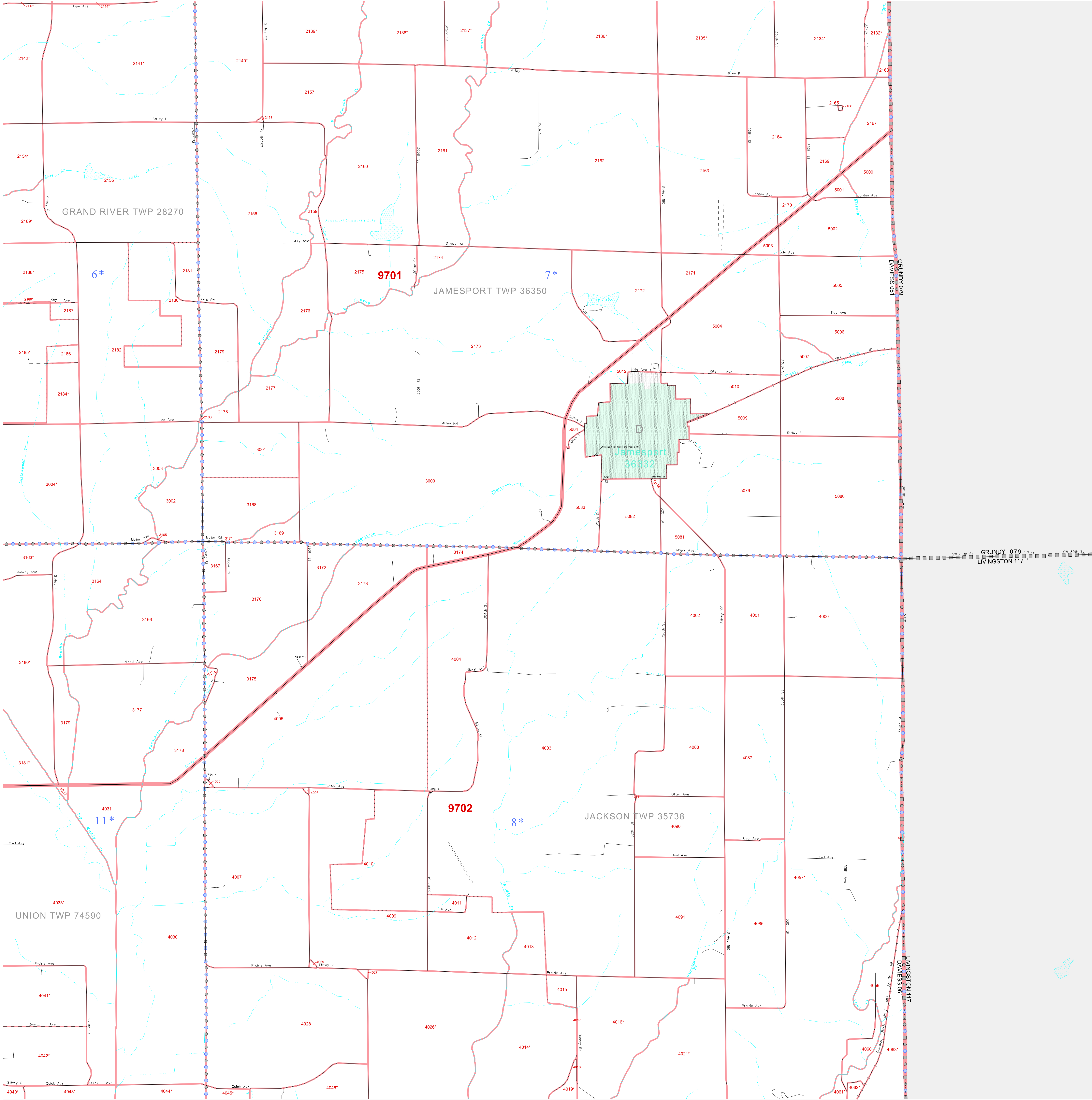


P. L. 94-171 COUNTY BLOCK MAP (CENSUS 2000)

40 026883N
93.902657W

40 026883N
93.730243W



GEOGRAPHIC AREAS LEGEND

SYMBOL	NAME STYLE
*****	INTERNATIONAL
//////	STATE
□□□□	COUNTY
□□□□□	MINOR CIVIL DIV.
■	Incorporated Place ¹
■	Census Designated Place ²
-----	Corporate Offset Boundary
●●●●●	Voting District ³
—	Census Tract
—	BLOCK ³
■	Military
Inset	Out Area

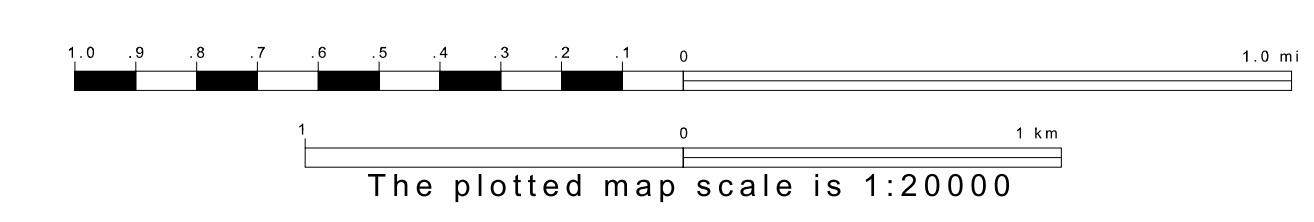
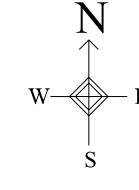
1 A "*" following a place name indicates that the place is coterminous with a MCD. A "-" indicates that the place is also a false MCD. In both cases, the MCD name is shown only when it differs from the place name.

2 A "*" following a VTD code indicates an actual voting district. Its absence indicates that the VTD is a pseudo voting district or no information is available as to its status.

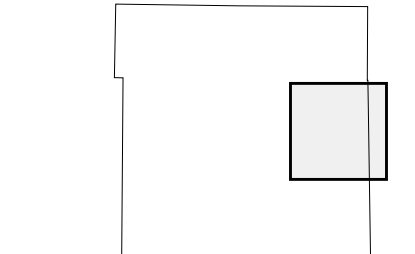
3 A "*" following a block number indicates that the block number is repeated elsewhere in the block.

38 894220N
93.902657W

38 894220N
93.730243W



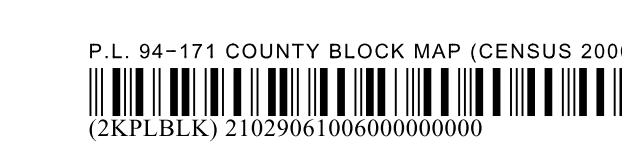
Sheet Location within County



Key to Adjacent Sheets

2	3
5	6
8	9

ST: Missouri (29)
COU: Daviess (061)
SHEET 6 OF 9 PARENT SHEETS



All legal boundaries and names are as of January 1, 2000. The boundaries shown on this map are for Census Bureau statistical data collection and tabulation purposes only; their depiction and designation for statistical purposes does not constitute a determination of jurisdictional authority or rights of ownership or entitlement. U.S. DEPARTMENT OF COMMERCE Economics and Statistics Administration U.S. Census Bureau