

P.L. 94-171 COUNTY BLOCK MAP (CENSUS 2000)

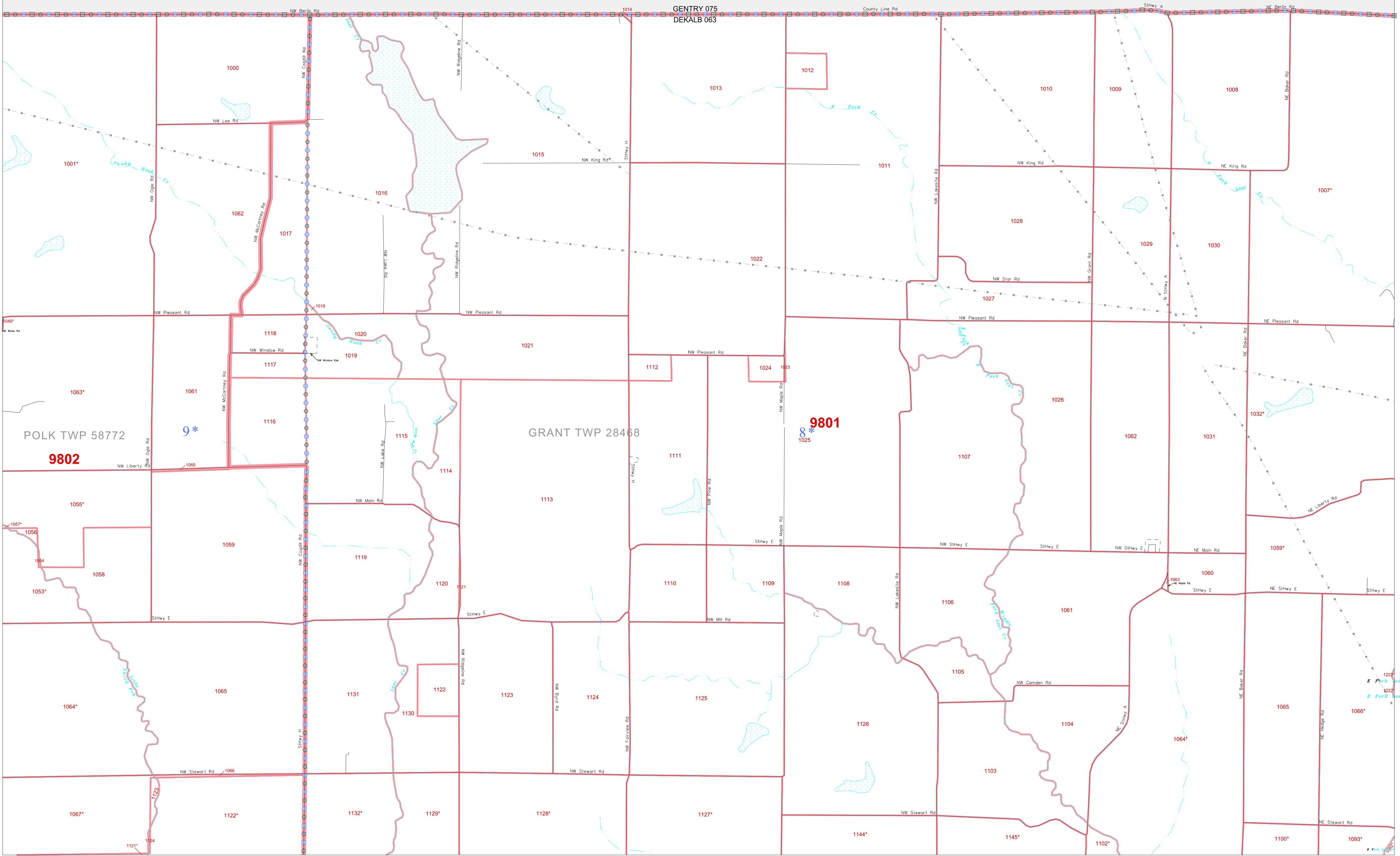
40 091671N
94 490537W

40 091671N
94 318293W

GEOGRAPHIC AREAS LEGEND

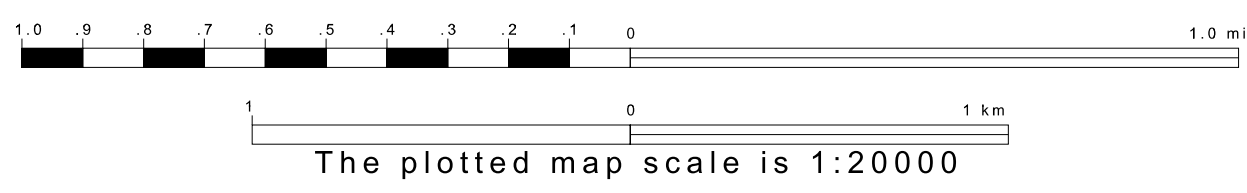
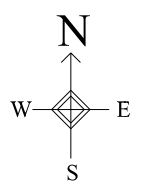
SYMBOL	NAME STYLE
*****	INTERNATIONAL
//////	STATE
■■■■■	COUNTY
●●●●●	MINOR CIVIL DIV. ¹
	Incorporated Place ¹
	Census Designated Place ¹
.....	Corporate Offset Boundary
●●●●●	Voting District ²
■■■■■	Census Tract
■■■■■	BLOCK ³
	Military
	Inset
	Out Area

1 A "*" following a place name indicates that the place is coterminous with a MCD. A "-" indicates that the place is also a false MCD. In both cases, the MCD name is shown only when it differs from the place name.
 2 A "*" following a VTD code indicates an actual voting district. Its absence indicates that the VTD is a pseudo voting district or no information is available as to its status.
 3 A "*" following a block number indicates that the block number is repeated elsewhere in the block.

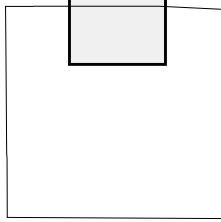


39 958887N
94 490537W

39 958887N
94 318293W



Sheet Location within County



Key to Adjacent Sheets

1	2	3
4	5	6

ST: Missouri (29)
 COU: DeKalb (063)
 SHEET 2 OF 9 PARENT SHEETS

