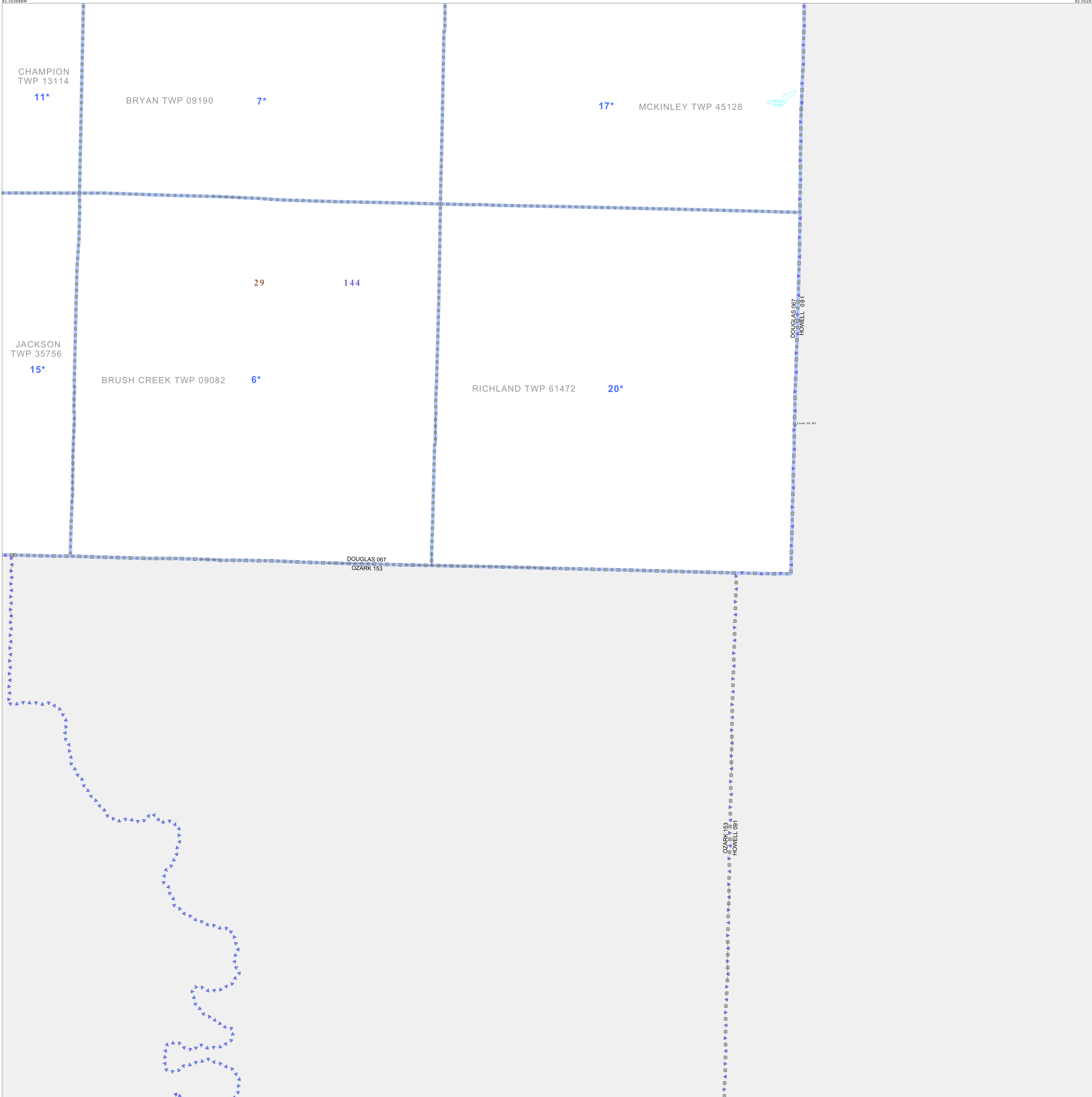


P.L. 94-171 VOTING DISTRICT/STATE LEGISLATIVE DISTRICT OUTLINE MAP (CENSUS 2000)

36 932332N  
92 333686W

36 932332N  
92 002976W



GEOGRAPHIC AREAS LEGEND

SYMBOL	NAME STYLE
*****	INTERNATIONAL
//////	STATE
□□□□□□	COUNTY
○ ○ ○ ○ ○ ○	MINOR CIVIL DIV. <sup>1</sup>
■ ■ ■ ■ ■ ■	Incorporated Place <sup>1</sup>
■ ■ ■ ■ ■ ■	Census Designated Place <sup>1</sup>
—	Voting District <sup>2</sup>
● ● ● ● ● ●	SLD-Senate
▲ ▲ ▲ ▲ ▲ ▲	SLD-House

Abbreviation Reference: AIR - American Indian Reservation; SDAISA - State Designated American Indian Statistical Area

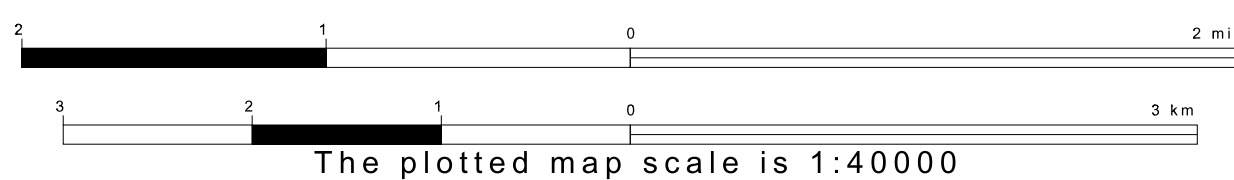
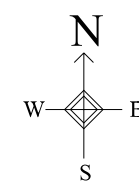
<sup>1</sup> A "\*" following a place name indicates that the place is coterminous with a MCD. A "-" indicates that the place is also a MCD. In both cases, the MCD name is shown only when it differs from the place name.  
<sup>2</sup> A "\*" following a VTD code indicates an actual voting district. Its absence indicates that the VTD is a pseudo voting district or no information is available as to its status.

Voting Districts

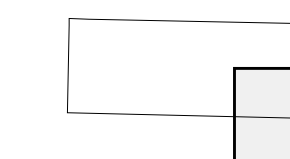
Code	Name
6*	Brushcreek Voting District
7*	Bryan Voting District
11*	Champion Voting District
15*	Jackson Voting District
17*	McKinley Voting District
20*	Richland Voting District

36 666828N  
92 333686W

36 666828N  
92 002976W



Sheet Location within County



Key to Adjacent Sheets

2	3
5	6

ST: Missouri (29)  
 COU: Douglas (067)  
 SHEET 6 OF 6 PARENT SHEETS

