

P.L. 94-171 VOTING DISTRICT/STATE LEGISLATIVE DISTRICT OUTLINE MAP (CENSUS 2000)

36 845234N  
90 247777W

36 845234N  
90 083730W

**GEOGRAPHIC AREAS LEGEND**

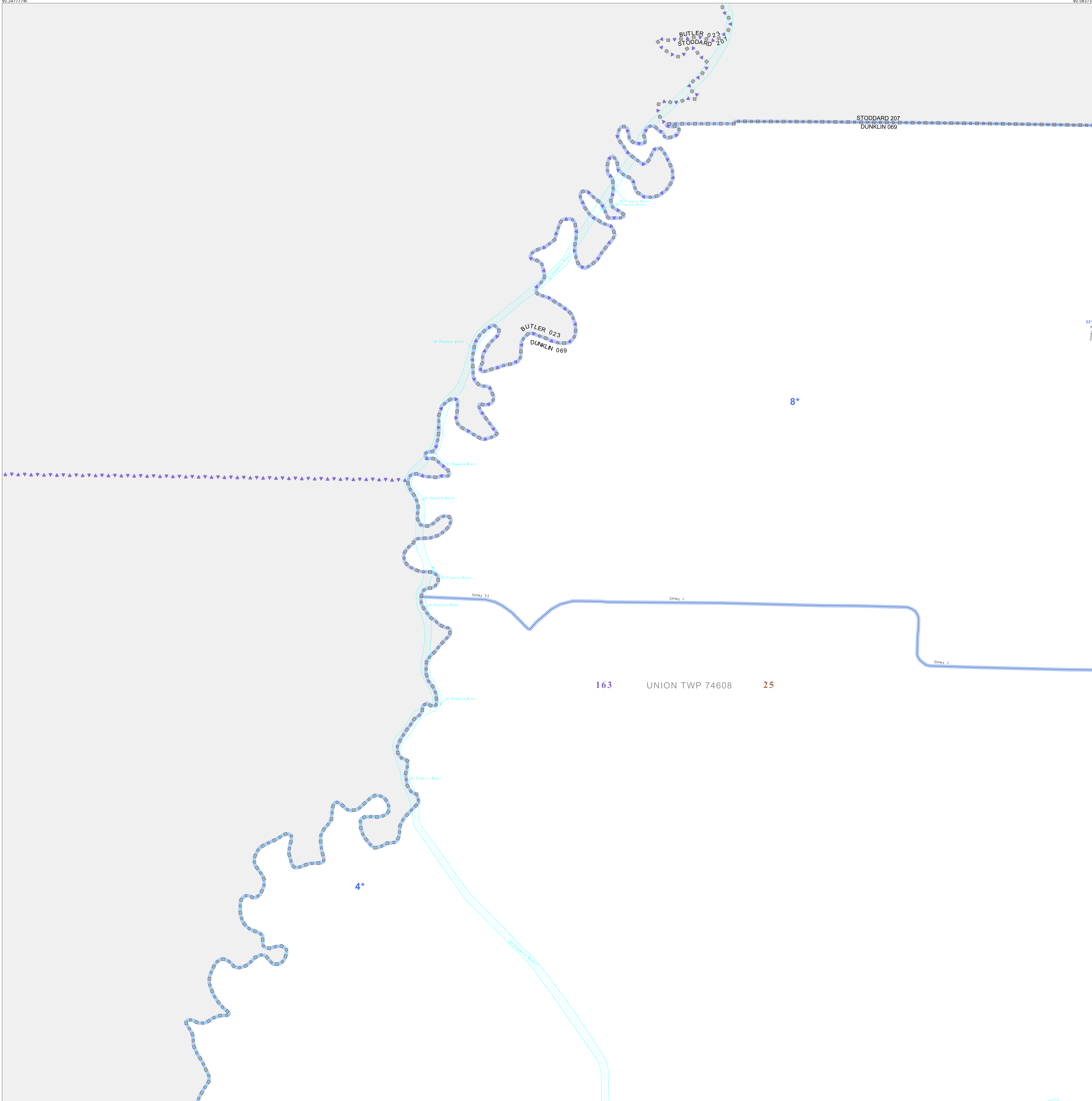
SYMBOL	NAME STYLE
*****	INTERNATIONAL
//////	STATE
□□□□□□	COUNTY
○ ○ ○ ○ ○	MINOR CIVIL DIV. <sup>1</sup>
■ ■ ■ ■ ■	Incorporated Place <sup>1</sup>
■ ■ ■ ■ ■	Census Designated Place <sup>1</sup>
—	Voting District <sup>2</sup>
● ● ● ● ●	SLD-Senate
▲ ▲ ▲ ▲ ▲	SLD-House

Abbreviation Reference: AIR = American Indian Reservation; SDAISA = State Designated American Indian Statistical Area

<sup>1</sup> A " " following a place name indicates that the place is coterminous with a MCD. A " " indicates that the place is also a false MCD. In both cases, the MCD name is shown only when it differs from the place name.  
<sup>2</sup> A " " following a VTD code indicates an actual voting district. Its absence indicates that the VTD is a pseudo voting district or no information is available as to its status.

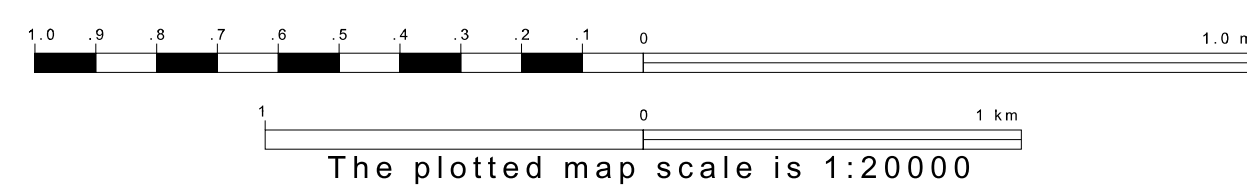
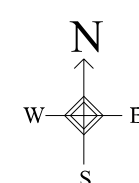
**Voting Districts**

Code	Name
4*	Campbell/War2&Rural
8*	Glenosville Voting District
21*	Sandyvale Voting District



36 512468N  
90 247777W

36 512468N  
90 083730W



Sheet Location within County



Key to Adjacent Sheets

1	2
3	4

ST: Missouri (29)  
 COU: Dunklin (069)  
 SHEET 1 OF 12 PARENT SHEETS

