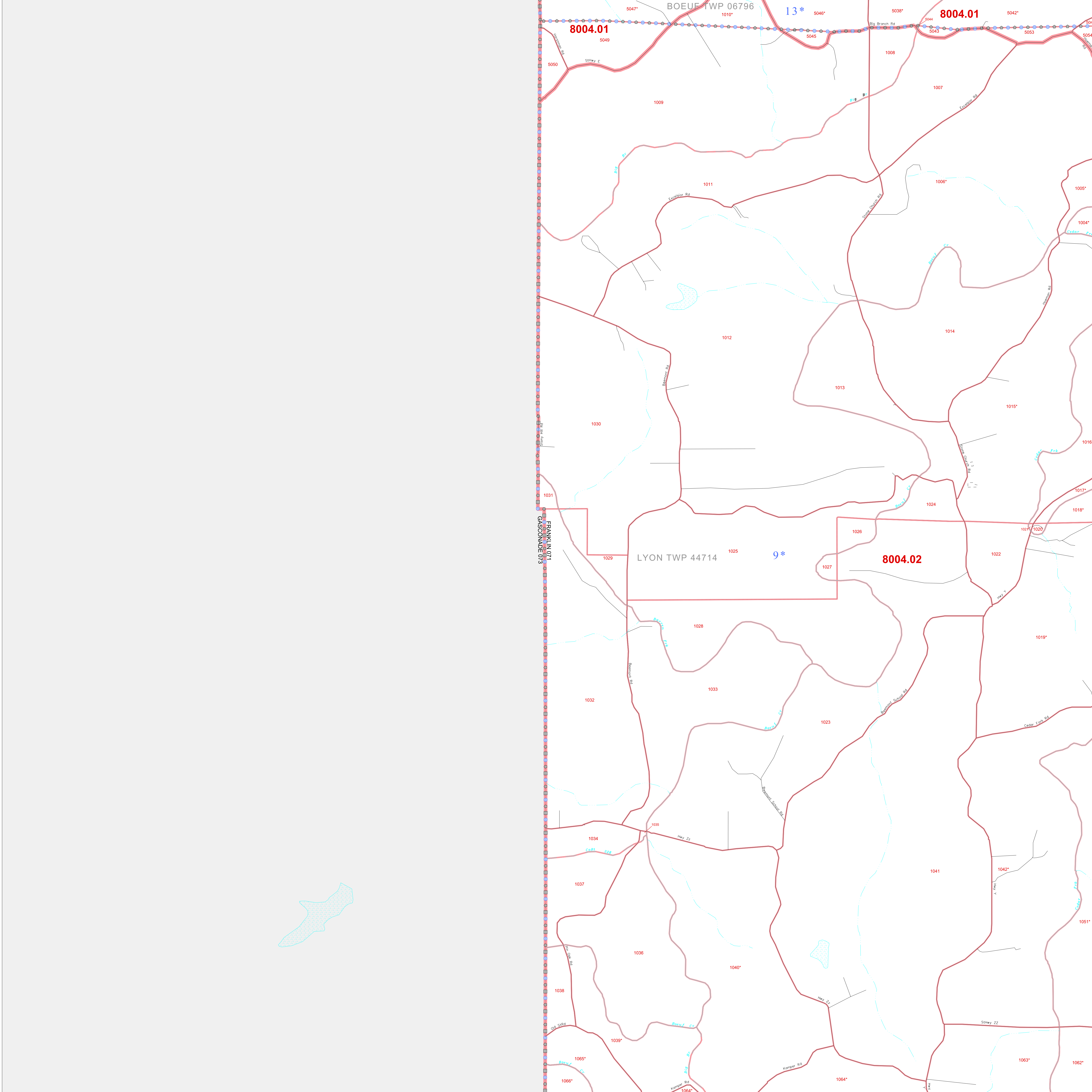


P.L. 94-171 COUNTY BLOCK MAP (CENSUS 2000)

38 555761N
91 430472W

38 555761N
91 430472W



GEOGRAPHIC AREAS LEGEND

| SYMBOL | NAME STYLE |
|-----------|--------------------------------------|
| ***** | INTERNATIONAL |
| /////// | STATE |
| □□□□□ | COUNTY |
| □□□□□ | MINOR CIVIL DIV ¹ |
| ■ ■ ■ ■ ■ | Incorporated Place ² |
| ■ ■ ■ ■ ■ | Census Designated Place ² |
| | Corporate Offset Boundary |
| ●●●●● | Voting District ³ |
| — — — — — | Census Tract |
| — — — — — | BLOCK ³ |
| ■ ■ ■ ■ ■ | Military |
| Inset | Out Area |

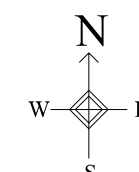
1 A "*" following a place name indicates that the place is coterminous with a MCD. A "-" indicates that the place is also a false MCD. In both cases, the MCD name is shown only when it differs from the place name.

2 A "*" following a VTD code indicates an actual voting district. Its absence indicates that the VTD is a pseudo voting district or no information is available as to its status.

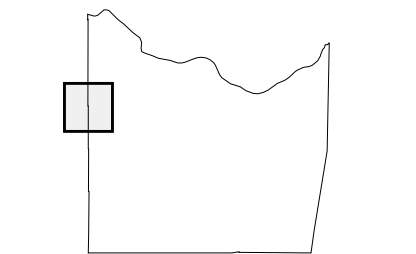
3 A "*" following a block number indicates that the block number is repeated elsewhere in the block.

38 456233N
91 430472W

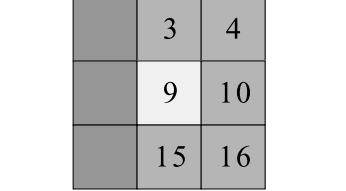
38 456233N
91 430472W



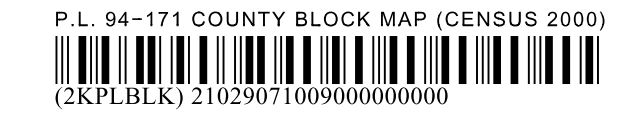
Sheet Location within County



Key to Adjacent Sheets



ST: Missouri (29)
COU: Franklin (071)
SHEET 9 OF 32 PARENT SHEETS



All legal boundaries and names are as of January 1, 2000. The boundaries shown on this map are for Census Bureau statistical data collection and tabulation purposes only; their depiction and designation for statistical purposes does not constitute a determination of jurisdictional authority or rights of ownership or entitlement. U.S. DEPARTMENT OF COMMERCE Economics and Statistics Administration U.S. Census Bureau